



GRAND BANKS 42 HERITAGE CLASSIC

GRAND BANKS 42 HERITAGE CLASSIC

BROKER'S COMMENTS

This well-maintained GB 42 is in excellent condition and features several upgrades that distinguish it from others. The engines were initially overhauled in 2015, but they underwent a complete refit in 2024, making them essentially brand new. All seacocks were also replaced during this process. The vessel is in significantly better condition than most of its peers from the same era, as evidenced by the polished hull and superstructure, along with the well-maintained teak decks and recent varnish works.

Roberto Kelly

SPECIFICATIONS

Dimensions	13.20 x 4.26 x 1.27 (m)	Builder	American Marine Ltd.
Built	1980	Cabins	2
Material	GRP	Berths	4
Engine(s)	2 x Ford Lehman 2715E diesel	Hp/Kw	2 x 121.00 (hp), 89.00 (kw)
Asking price	€ 129.000 (VAT Exempt)	Lying	contact sales office

CONTACT

Sales office	De Valk Barcelona	Telephone	+34 932 202 825
Address	Barcelona region 08392 Barcelona ES	E-mail	barcelona@devalk.nl

DISCLAIMER

These particulars are given in good faith as supplied but cannot be guaranteed.



GRAND BANKS 42 HERITAGE CLASSIC

GENERAL

Model	GRAND BANKS 42 HERITAGE CLASSIC
Type	motor yacht
LOA (m)	13,20
Beam (m)	4,26
Draft (m)	1,27
Headroom (m)	2,20
Year built	1980
Builder	American Marine Ltd.
Country	Singapore
Displacement (t)	18,34
CE norm	NA
Hull material	GRP
Hull colour	white
Hull shape	yes
Deck material	GRP
Deck finish	teak
Superstructure deck finish	teak
Antifouling (year)	July 2019
Flybridge	yes
Flybridge suncover	yes
Radar arch	Stainless Steel.
Steadying sail with mast	yes
Fuel tank (litre)	steel 1230
Fuel tank 2 (litre)	steel 1230
Level indicator (fuel tank)	yes
Freshwater tank (litre)	3 x 400
Level indicator (freshwater)	yes
Blackwater tank (litre)	80
Blackwater tank extraction	deck extraction + pump
Wheel steering	In and outside



GRAND BANKS 42 HERITAGE CLASSIC

Inside helm position	yes
Flybridge helm position	yes
More info on hull	Superb state
More info on paintwork	Varnishing stern in top state
Extra info	All woodwork outside in as new condition

ACCOMMODATION

Cabins	2
Berths	4
Interior	teak
Layout	yes
Floor	parquet
Aft deck	yes
Saloon	With comfortable Mercedes pilot seat
Headroom saloon (m)	2,10
Air-conditioning	reverse cycle airco Double
Aft Cabin	Aftcabin with extended bed and desk
Dinette	yes
Opening door to aft deck	From aft cabin
Galley	yes
Countertop	Renewed
Sink	Double
Cooker	3 burner
Oven	Princess, electric
Microwave	yes
Fridge	3x, galley (Liebherr Premium), guest cabin, fly
Freezer	In engine room
Hot water system	yes
Water pressure system	electrical
Owners cabin	double bed Extended to access easy for both persons.
Bed length (m)	2,10



GRAND BANKS 42 HERITAGE CLASSIC

Wardrobe	yes
Bathroom	en suite
Toilet	en suite
Toilet system	electric
Wash basin	at the toilet
Shower	en suite
Guest cabin 1	v-bed
Wardrobe	yes
Bathroom	en suite
Toilet	en suite
Toilet system	electric
Wash basin	at the toilet
Shower	en suite
Washing machine	Minea
Flybridge	Working lights aft deck
Extra info	All led lights
Extra info	Ledd strips trough vessel for romantic athmosphere

MACHINERY

No of engines	2
Make	Ford
Type	Lehman 2715E
HP	121
kW	89
Fuel	diesel
Year installed	1981
Year of overhaul	2015
Maximum speed (kn)	9,5
Cruising speed (kn)	8,5
Consumption (l/hr)	16
Range (nm)	900



GRAND BANKS 42 HERITAGE CLASSIC

Engine hours	yes
Engine cooling system	freshwater heat exchanger
Drive	shaft
Shaft seal	2015
Engine controls	yes
Exhaust	watercooled
Propeller type	fixed
Propeller blades	3
Propeller shaft material	stainless steel
Manual bilge pump	yes
Electric bilge pump	yes
Generator	Paguro 4000 New 2015
Generator 2	Onan with elctrical problem
Batteries	4x 12V 220Amp
Start battery	1x
Service battery	2x
Generator battery	1x
Battery charger	Mastervolt 12/50-3 automatic
Shorepower	yes
Stabilizers	0-speed Clever syst. with rods/Ss board, no energy, cheap and efficient.
Extra info	Latest engine service 2020

NAVIGATION

Compass	yes
Compass on flybridge	yes
Electric compass	On pilot
Depth sounder/log	yes
Fish finder	Lowrance
VHF	yes
VHF handheld	yes



GRAND BANKS 42 HERITAGE CLASSIC

Autopilot	yes
Rudder angle indicator	On pilot
Radar	Raytheon RX 41
GPS	Raytheon 5 channel
Plotter/GPS	Raymarine E-120 12"
Wifi antenna	yes
AIS receiver	AIS-350 connected to plotter
Camera	Engineroom/ aftdeck
Navigation lights	yes

EQUIPMENT

Fixed windscreen	Heavy duty
Bimini	yes
Cockpit cushions	Fly
Bathing platform	yes
Boarding ladder	yes
Transom door	yes
Gangway	yes
Anchor	yes
Anchor chain	yes
Windlass	electrical
Deck crane	Via mast/ boom
Sea railing	teak New varnish/ great condition
Life raft (pers)	container 6, Type Ibiza
Last life raft survey	April 2018
Lifejackets	Survey April 2018
Radar reflector	yes
Fenders	yes
Mooring lines	yes
Spare parts	yes
Tools	yes



GRAND BANKS 42 HERITAGE CLASSIC

TV	1 in salon, Samsung, 1 in master cabin
Radio-cd player	yes
DVD player	Intergrated in both TV systems
Sub-woofer	yes
Speakers in salon	Bose
Fire extinguisher	yes
Latest extinguisher survey	April 2018

RIGGING

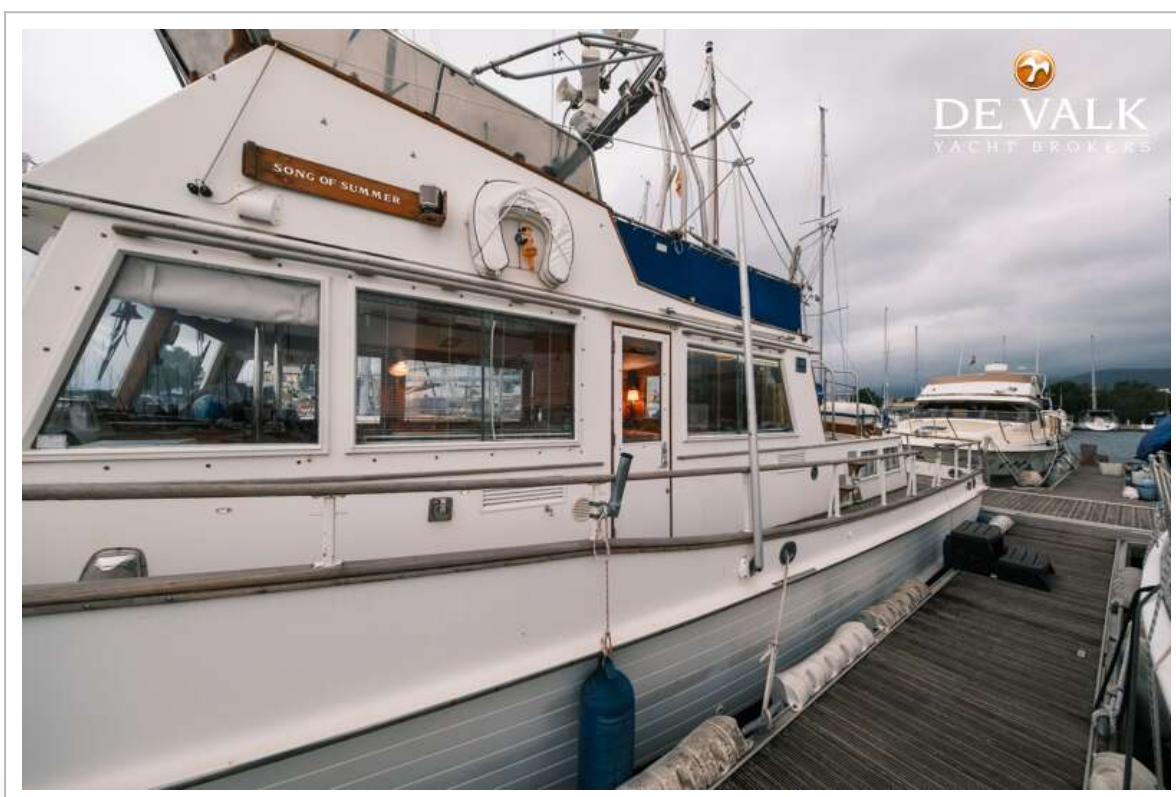
Material mast	aluminium
Mainsail	Stabilazer sail



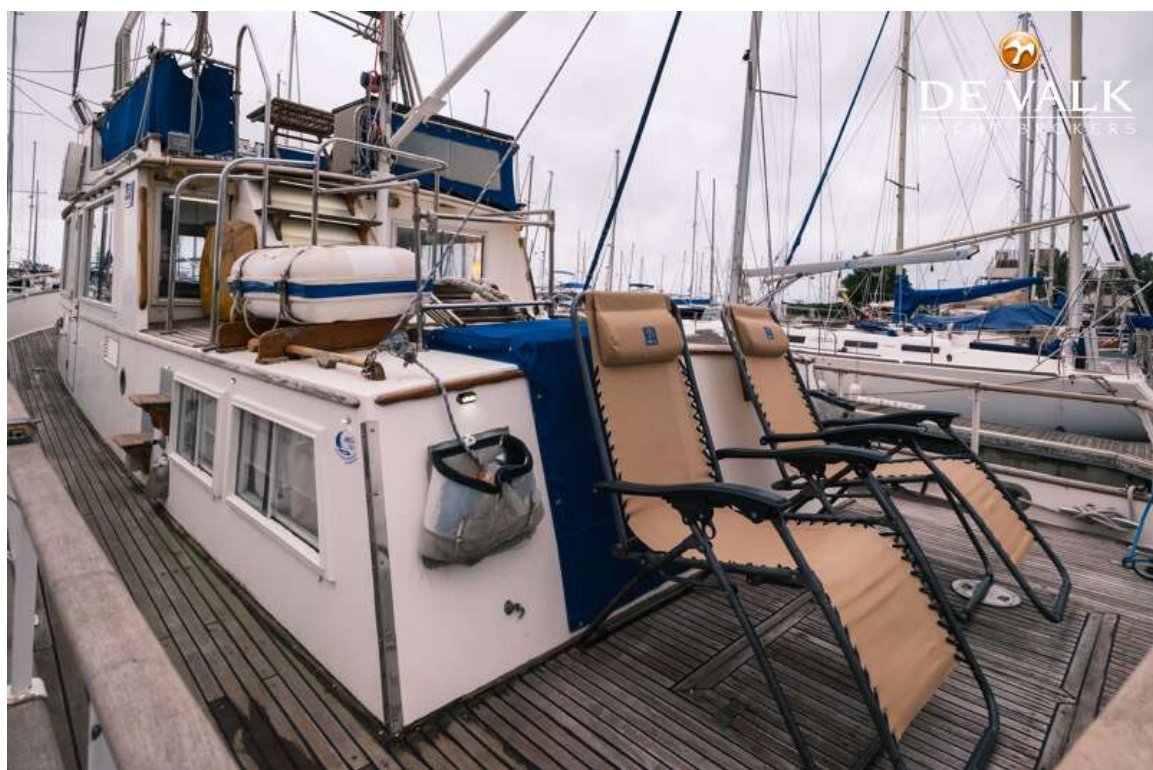
GRAND BANKS 42 HERITAGE CLASSIC



GRAND BANKS 42 HERITAGE CLASSIC



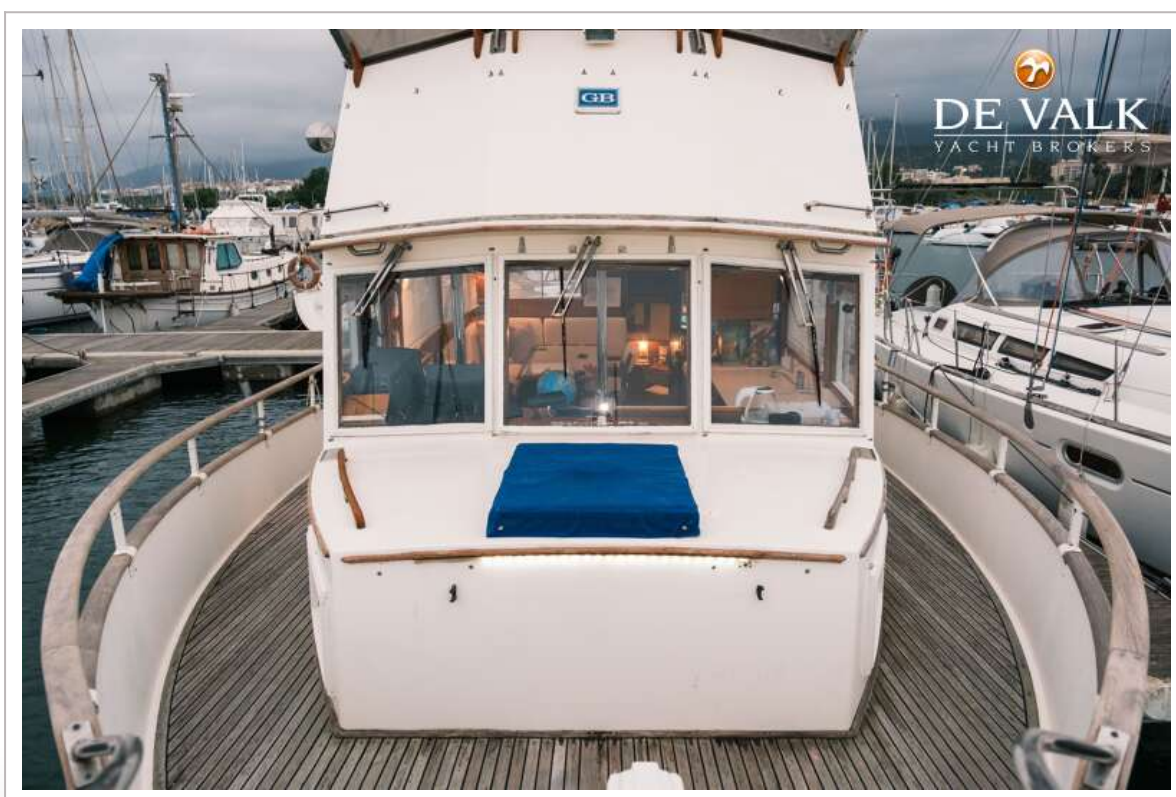
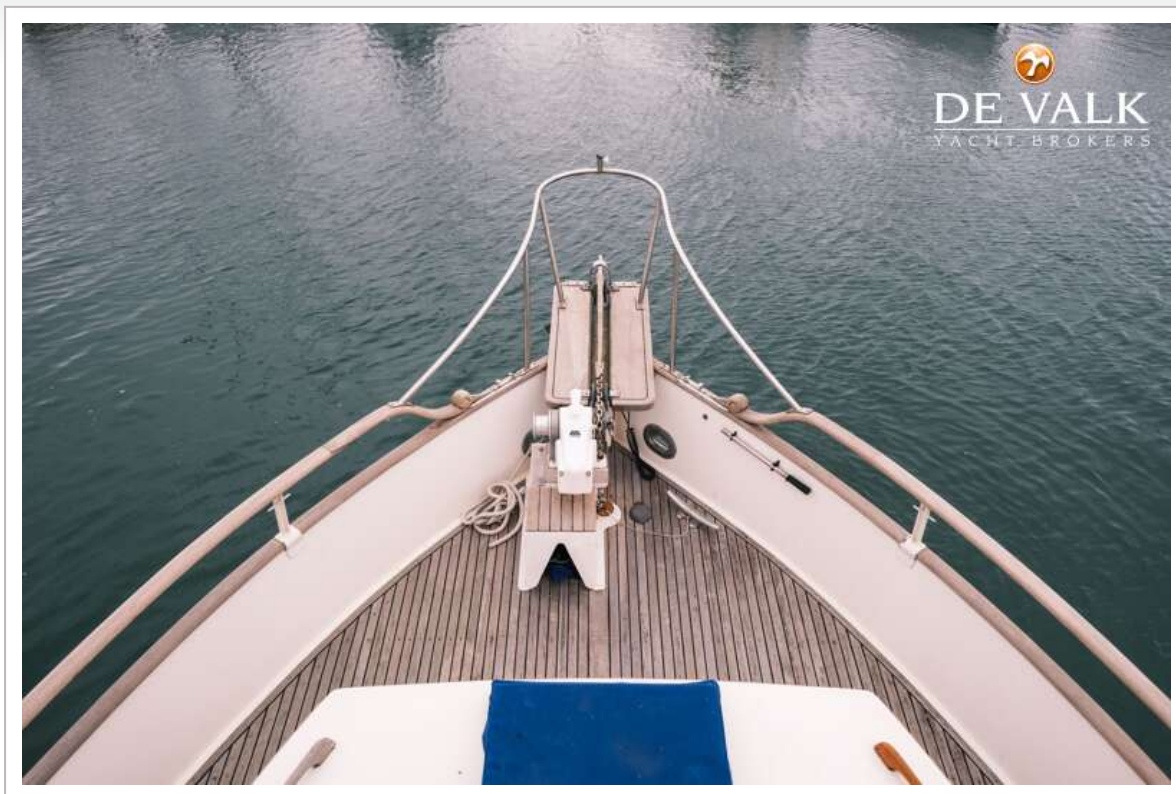
GRAND BANKS 42 HERITAGE CLASSIC



GRAND BANKS 42 HERITAGE CLASSIC



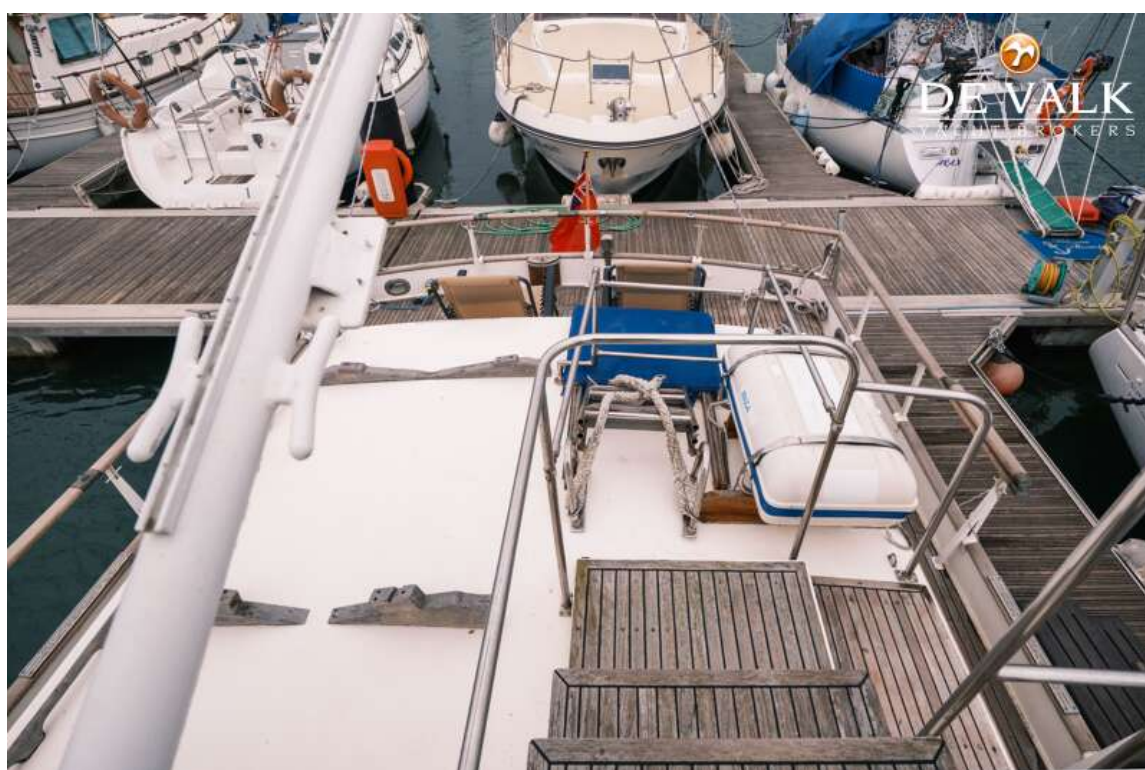
GRAND BANKS 42 HERITAGE CLASSIC



GRAND BANKS 42 HERITAGE CLASSIC



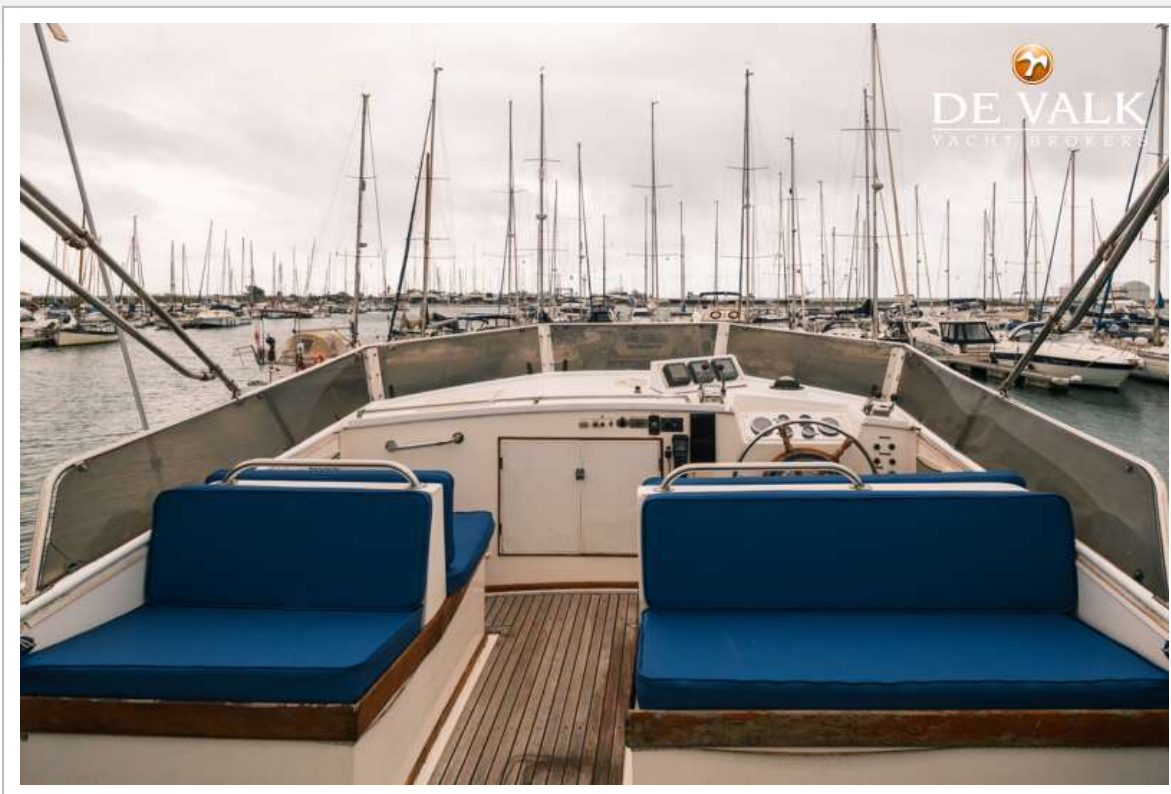
GRAND BANKS 42 HERITAGE CLASSIC



GRAND BANKS 42 HERITAGE CLASSIC



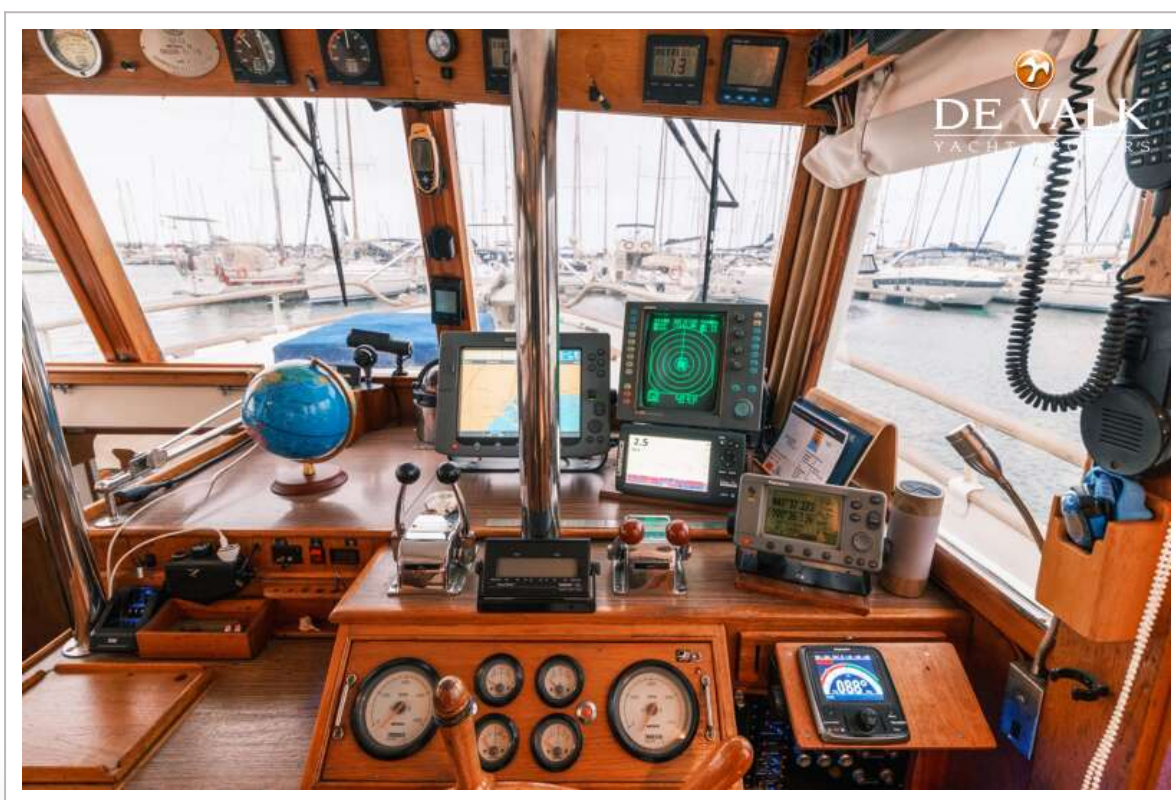
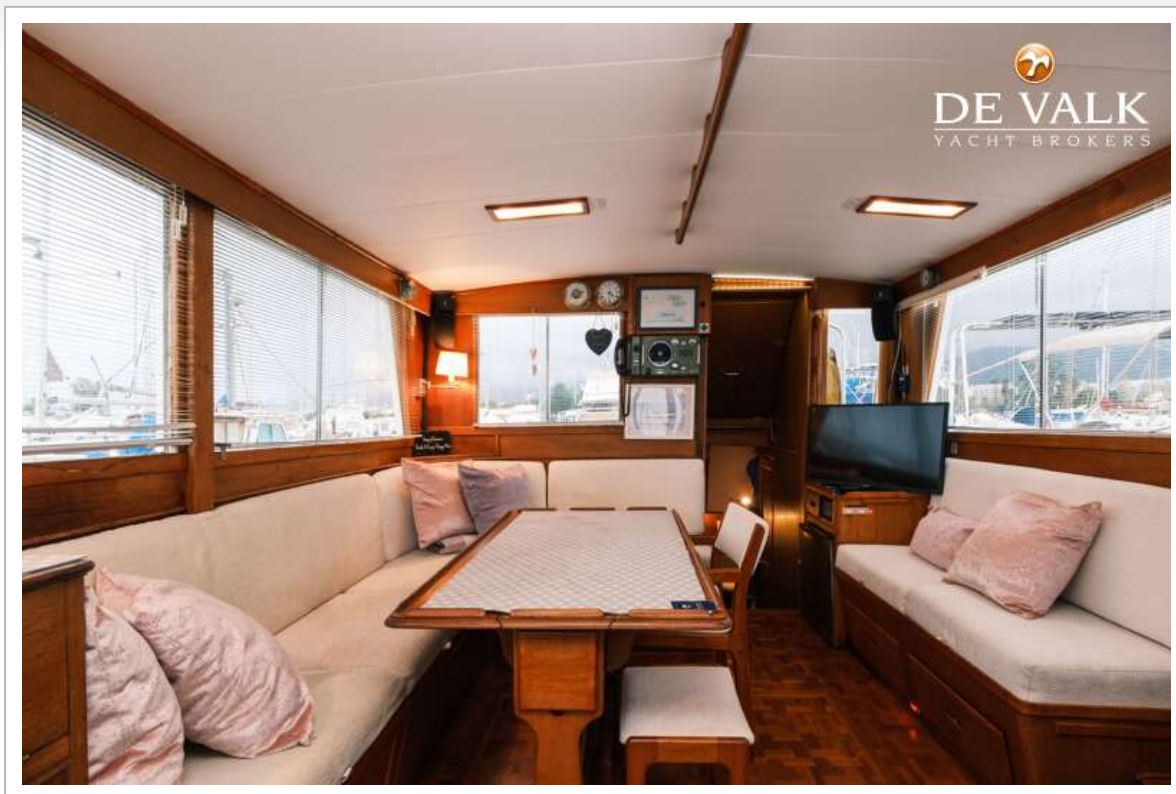
GRAND BANKS 42 HERITAGE CLASSIC



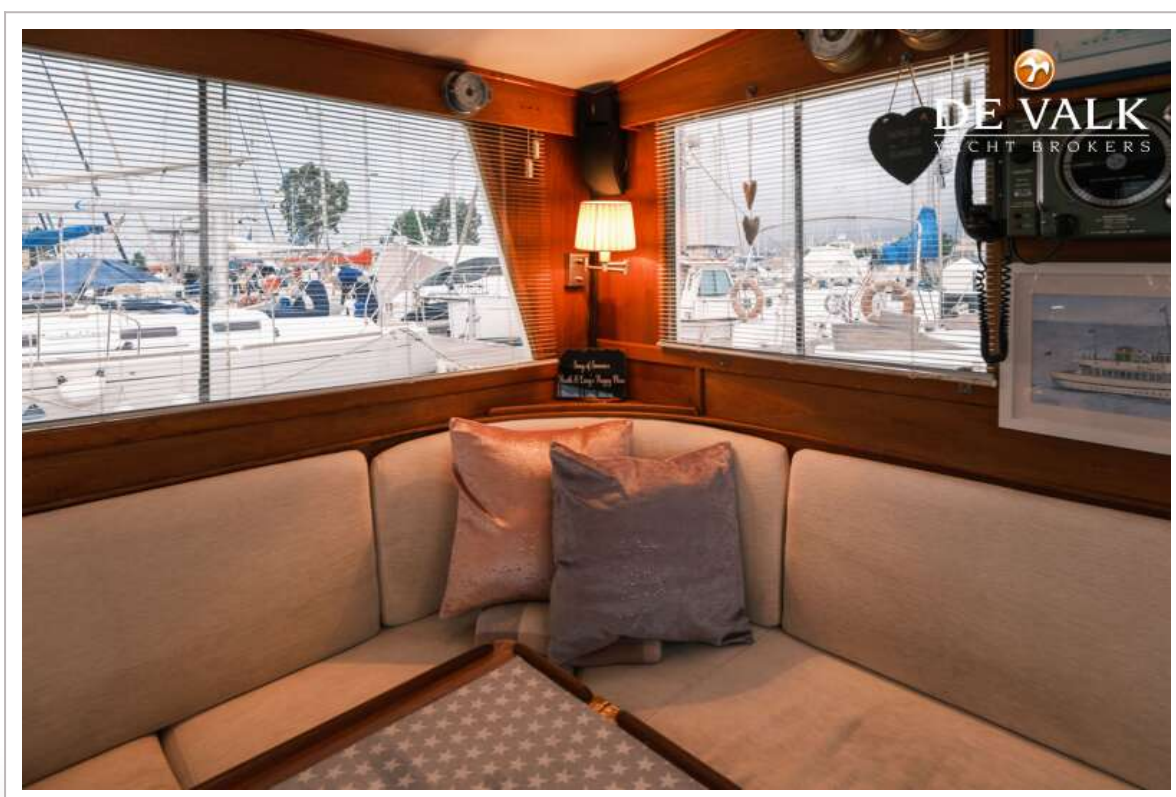
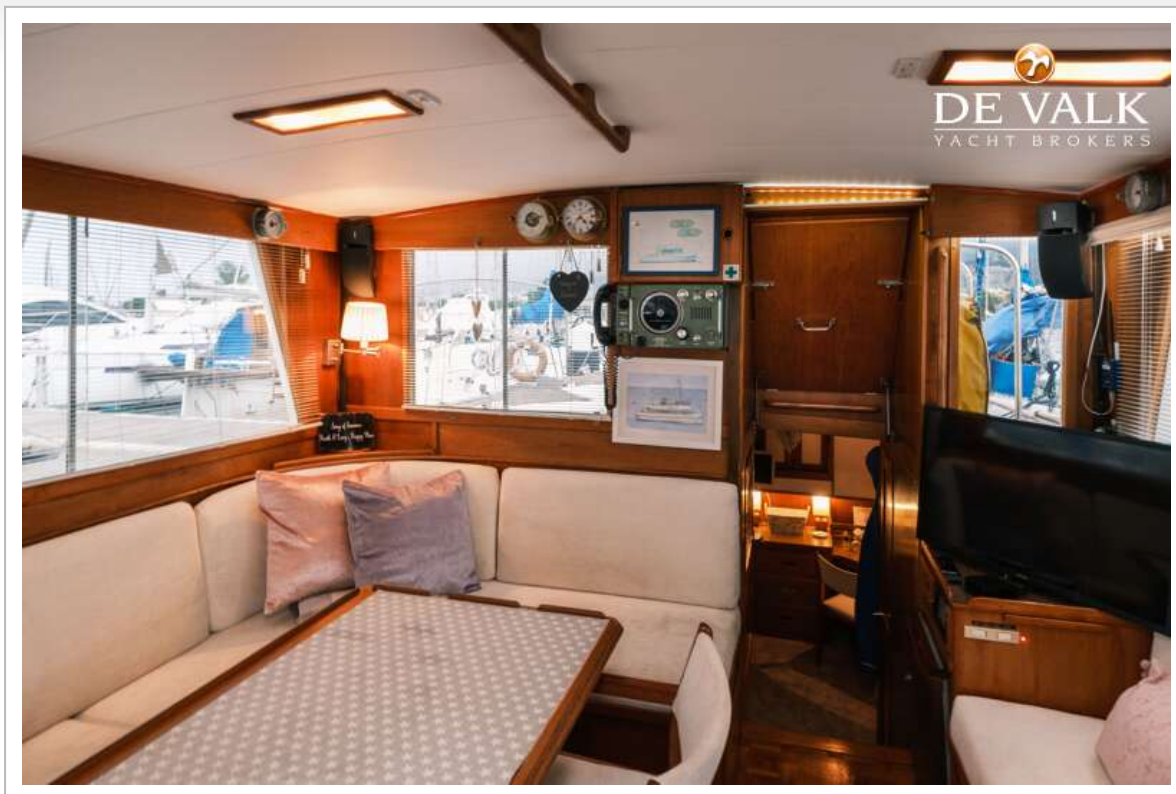
GRAND BANKS 42 HERITAGE CLASSIC



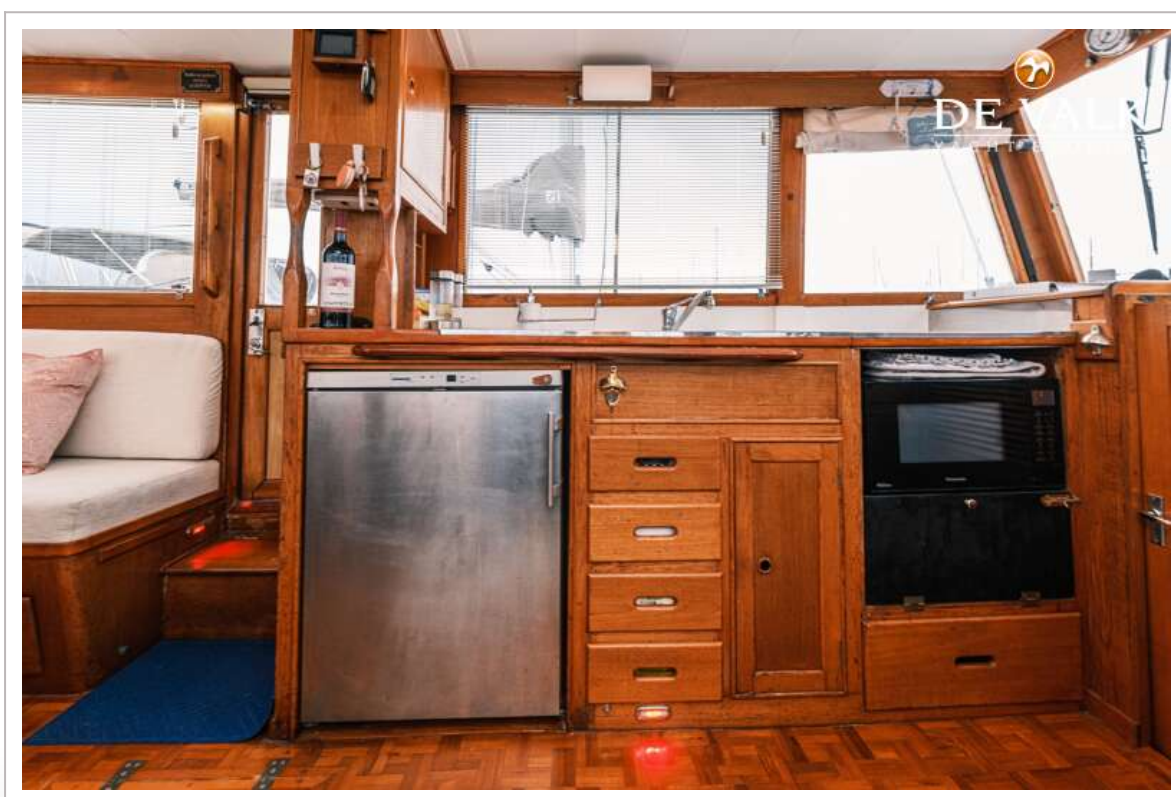
GRAND BANKS 42 HERITAGE CLASSIC



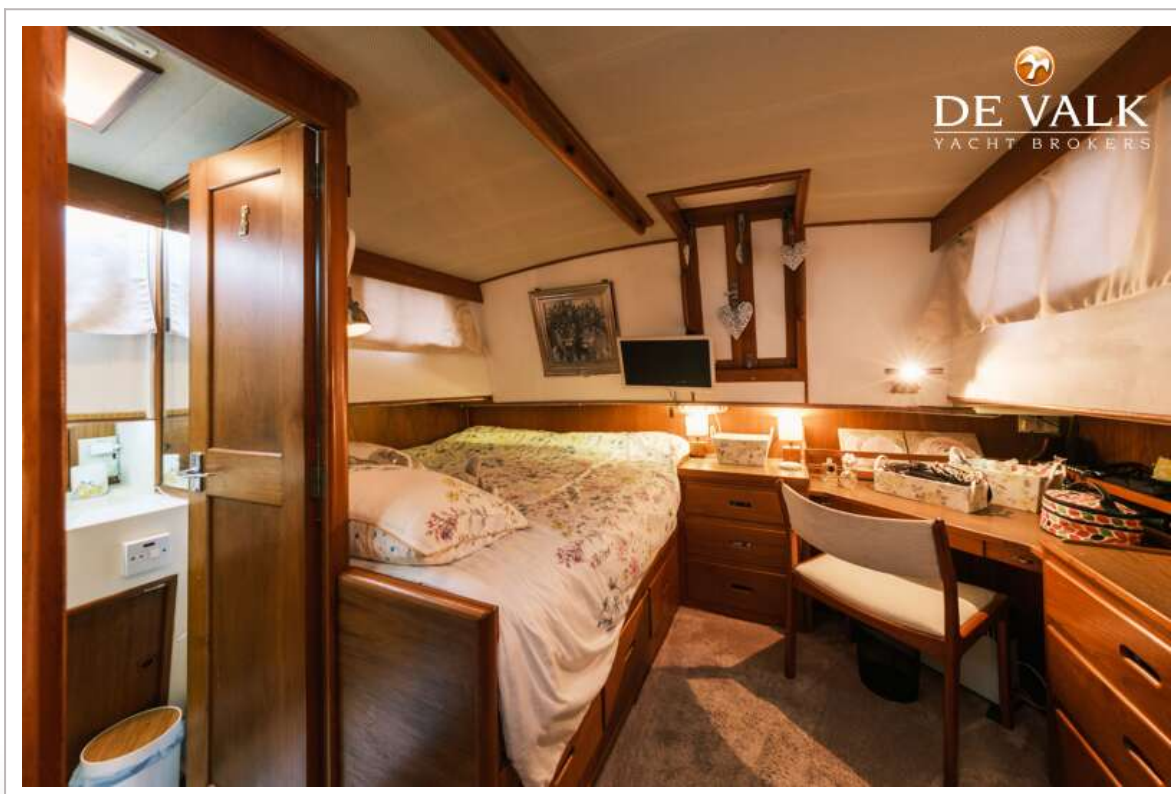
GRAND BANKS 42 HERITAGE CLASSIC



GRAND BANKS 42 HERITAGE CLASSIC



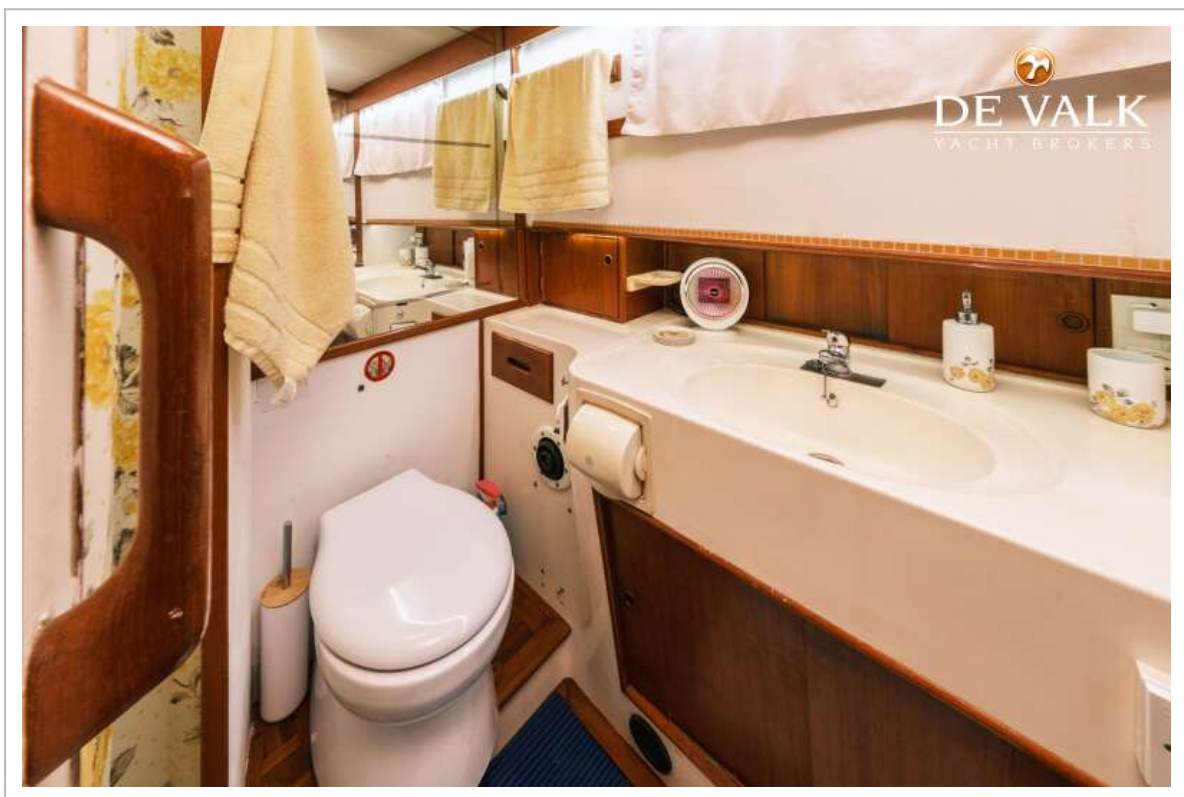
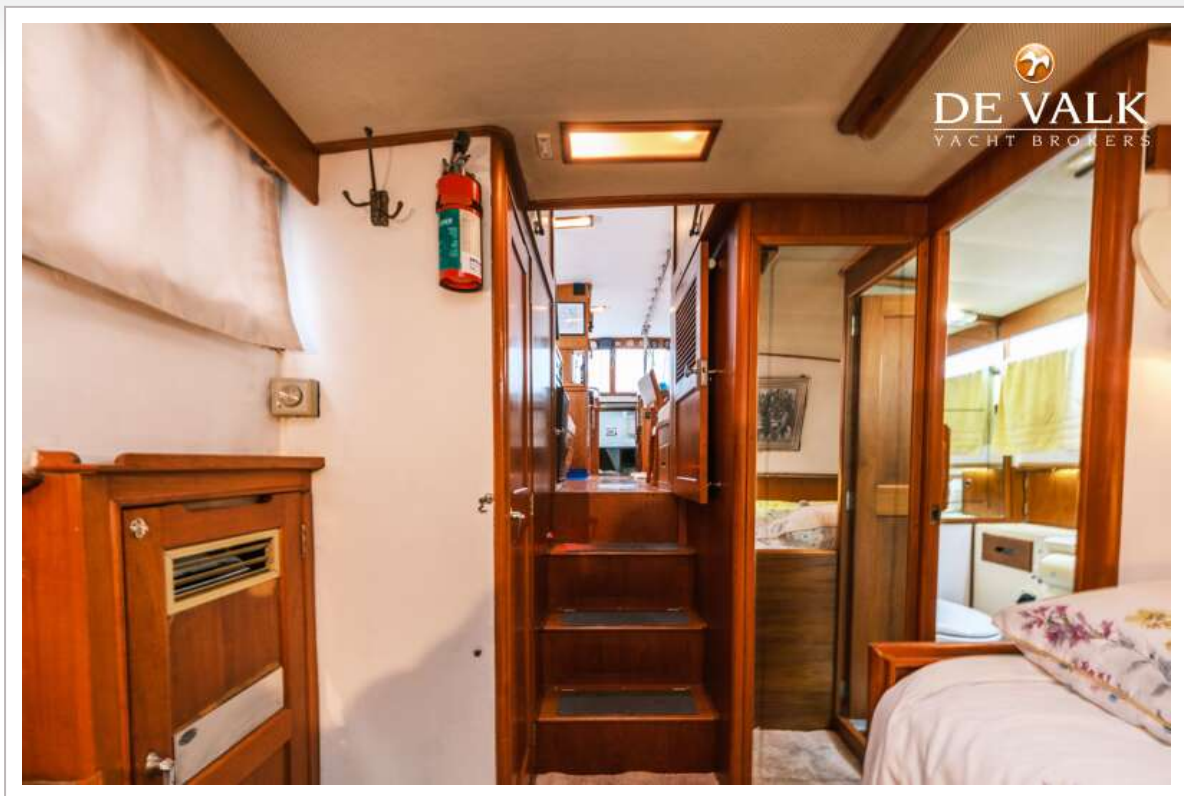
GRAND BANKS 42 HERITAGE CLASSIC



GRAND BANKS 42 HERITAGE CLASSIC



GRAND BANKS 42 HERITAGE CLASSIC



GRAND BANKS 42 HERITAGE CLASSIC



GRAND BANKS 42 HERITAGE CLASSIC

