



TRAWLER YACHT ONE-OFF 18.5 M



TRAWLER YACHT ONE-OFF 18.5 M

BROKER'S COMMENTS

Meet lovely Charlotte, a beautiful luxury yacht completely stripped down and newly rebuilt in 2007, based on former fishing cutter BR-50. With her rock-solid seaworthy hull and reliable engine, no sea condition will scare her at all. Inside, she offers incredible comfortable living space for 4 people, with a beautiful teak interior, double glazing and central heating system. A boat for long voyages and permanent living aboard with lots of character; you will immediately fall in love with her when you meet her. She is in excellent condition and we offer a 1000 Nm free delivery!

Willem Koopmans

SPECIFICATIONS

Dimensions	18.50 x 4.80 x 1.95 (m)	Builder	Shipyards Haag, Zaandam
Built	1960	Cabins	2
Material	Steel	Berths	4
Engine(s)	1 x MTU Mercedes OM 424 diesel	Hp/Kw	354.00 (hp), 260.54 (kw)
Asking price	€ 397.500 (VAT Exempt)	Lying	contact sales office

CONTACT

Sales office	De Valk Costa Blanca	Telephone	+34 96 50 21 569
Address	Costa Blanca Region 03730 Javea Alicante ES	E-mail	costablanca@devalk.nl

DISCLAIMER

These particulars are given in good faith as supplied but cannot be guaranteed.



TRAWLER YACHT ONE-OFF 18.5 M

GENERAL

Model	TRAWLER YACHT ONE-OFF 18.5 M
Type	motor yacht
LOA (m)	18,50
Beam (m)	4,80
Draft (m)	1,95
Headroom (m)	2,00
Year built	1960
Launched	1960/2007
Builder	Shipyards Haag, Zaandam
Country	The Netherlands
Designer	2007 rebuilt to yacht
Displacement (t)	35
CE norm	NA
Hull material	steel
Hull colour	green
Hull thickness (mm)	8, approx.
Hull shape	round-bilged
Keel type	bilge keels
Bilge keels	yes
Superstructure material	steel
Deck material	steel
Deck finish	paint
Superstructure deck finish	paint
Cockpit deck finish	teak
Antifouling (year)	2024, summer
Window frame	aluminium
Window material	double glazing Tempered glass
Flybridge	With steering position and solar panels
Flybridge cover	Over instruments
Radar arch	collapsible



TRAWLER YACHT ONE-OFF 18.5 M

Fuel tank (litre)	5600 in total
Level indicator (fuel tank)	yes
Freshwater tank (litre)	1600
Level indicator (freshwater)	yes
Blackwater tank (litre)	215
Greywater tank (litre)	215
Wheel steering	hydraulic
Inside helm position	yes
Flybridge helm position	hydraulic
More info on paintwork	New paint, above and below, new antifouling, summer 2024

ACCOMMODATION

Cabins	2
Berths	4
Interior	teak
Layout	2 cabins and massive walk-in (former third cabin)
Floor	teak and holly
Open cockpit	yes
Aft deck	yes
Pilot house	yes
Deck saloon	yes
Headroom saloon (m)	1,95
Heating	central heating Maritime Booster gasoline CV system
Navigation center	yes
Chart table	yes
Dining room	yes
Dinette	Located in front
Opening door to cockpit	Double
Galley	U-shape
Countertop	Duropol
Sink	stainless steel



TRAWLER YACHT ONE-OFF 18.5 M

Cooker	induction 4 burner
Oven	Miele
Fridge	yes
Freezer	yes
Hot water system	yes
Water pressure system	electrical
Owners cabin	double bed Front cabin
Bed length (m)	2,1
Wardrobe	hanging and shelves
Bathroom	en suite
Toilet	en suite
Toilet system	electric
Wash basin	in the bathroom
Shower	shared
Guest cabin 1	double bed Mid cabin
Bed length (m)	2
Wardrobe	hanging and shelves Walk-in closet with washing machine
Bathroom	shared
Toilet	shared
Toilet system	electric
Wash basin	in the bathroom
Shower	shared Separate shower
Washing machine/dryer combi	Bosch Eco Silent Drive, serie 6

MACHINERY

No of engines	1
Make	MTU Mercedes
Type	OM 424
HP	354
kW	260.54
Fuel	diesel



TRAWLER YACHT ONE-OFF 18.5 M

Year installed	1994
Year of overhaul	Under full maintenance
Maximum speed (kn)	10
Cruising speed (kn)	7
Consumption (l/hr)	20
Range (nm)	2000
Engine hours	18000
Engine cooling system	closed keelcooling
Drive	shaft
Engine controls	electrical & bowden cable Morse
Gearbox	hydraulic
Bowthruster	hydraulic
Exhaust	dry
Propeller type	fixed
Propeller blades	3
Propeller shaft material	stainless steel
Shaft lubrication	grease
Electric bilge pump	yes
Electrical installation	12/24/230
Generator	10 Kva recently installed
Running hours generator	76!
Batteries	800 Amp
Start battery	yes
Service battery	2 volt cells will be newly installed
Generator battery	yes
Battery charger/inverter	2x Victron Phoenix Multi 24/3000/70
Solar panel	4x, on fly
Shorepower	yes
Extra info	Electrical wiring panels redone in The Netherlands
Extra info	Engine is known for heavy duty work, will last forever.



TRAWLER YACHT ONE-OFF 18.5 M

NAVIGATION

Compass	yes
Electric compass	On Simrad AP 25 pilot
Depth sounder	B&G
Log	B&G
VHF	Sailor 6222 and Sailor 6215
Autopilot	Simrad AP25
Rudder angle indicator	On pilot
Radar	Furuno (2021) and JRC open scanners
GPS	Furuno
Plotter	Time Zero
Navtex	Furuno NX300
PC connection	Total 3 x 19"Neovo displays
Electronic chart(s)	Time Zero
AIS transponder	yes
AIS transceiver	Smartfind Mc Murdo Class A
Camera	Aft
Navigation lights	yes
Searchlight	On roof
Extra info	Most Navcom is commercial shipping based

EQUIPMENT

Anchor	yes
Anchor chain	60 mtr
Windlass	Lofrans
Capstan	yes
Dinghy	On deck
Outboard	Electric
Outboard support	Stored in lazarette
Deck crane	manual
Sea railing	yes

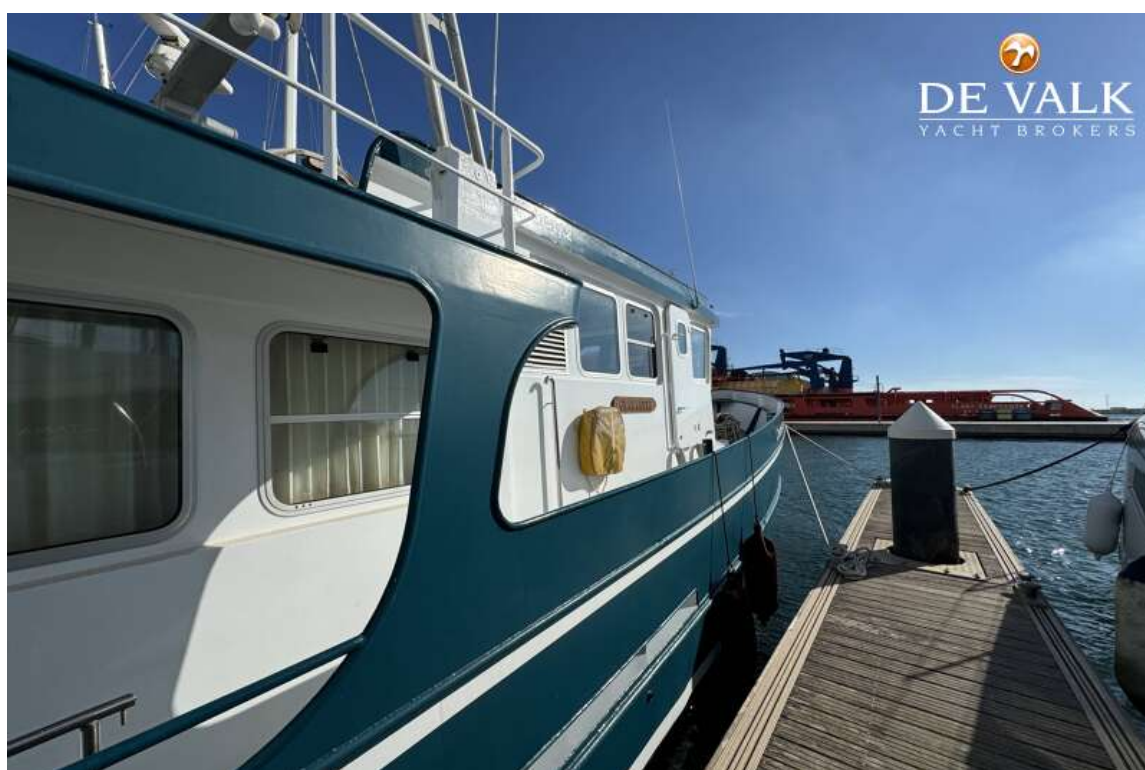


TRAWLER YACHT ONE-OFF 18.5 M

Grab rail (superstructure)	yes
Railing side opening gates	yes
Life raft	container Plastimo Cruiser
Life raft (pers)	6
Wiper	yes
Horn	yes
Fenders	yes
Mooring lines	yes
Spare parts	yes
Tools	yes
TV	Small tv
Radio-cd player	Home set
DVD player	Home set
Surround Sound System	Pioneer speakers
Clock - barometer	yes
Fire extinguisher	yes
Extinguisher in engine room	yes
Auto extinguisher system	yes



TRAWLER YACHT ONE-OFF 18.5 M



TRAWLER YACHT ONE-OFF 18.5 M



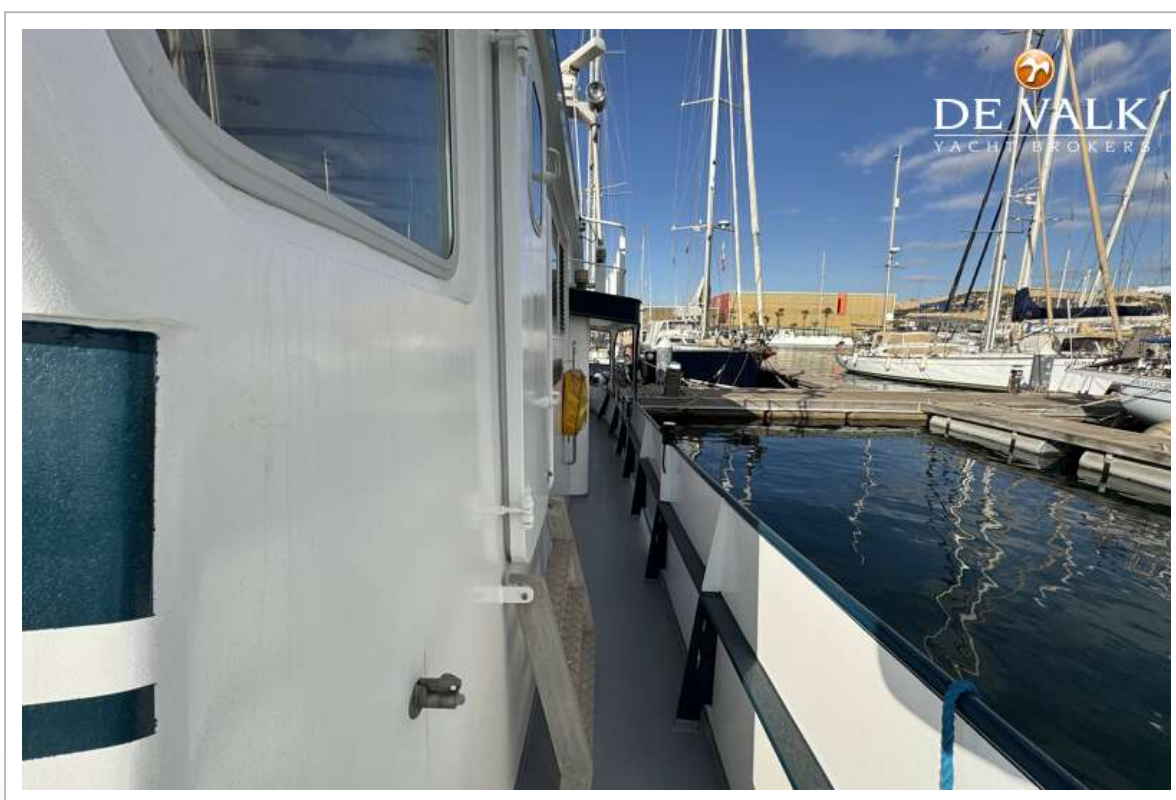
TRAWLER YACHT ONE-OFF 18.5 M



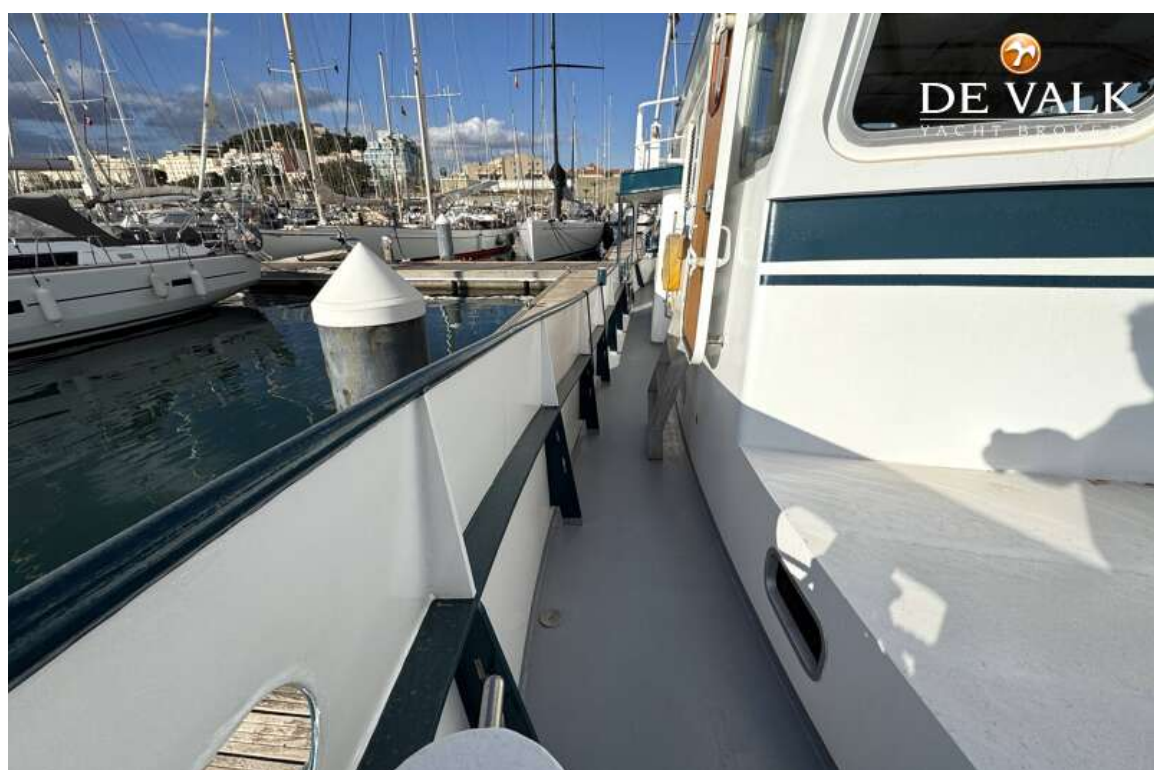
TRAWLER YACHT ONE-OFF 18.5 M



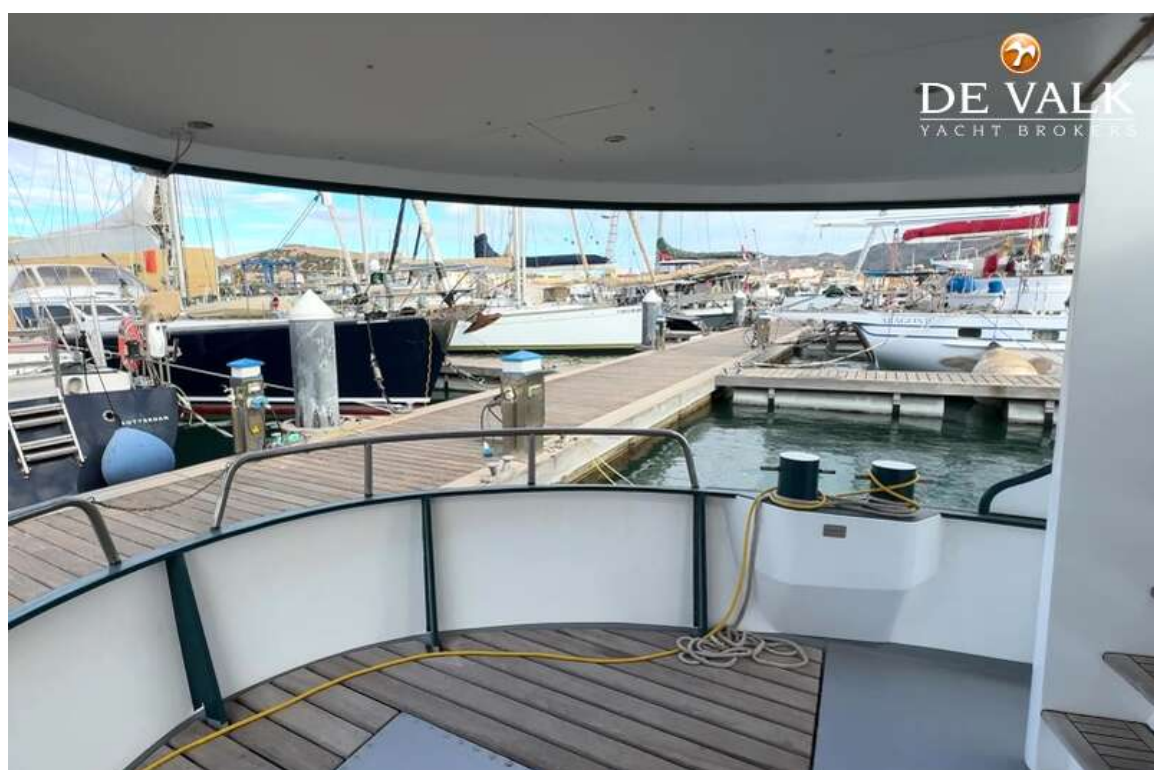
TRAWLER YACHT ONE-OFF 18.5 M



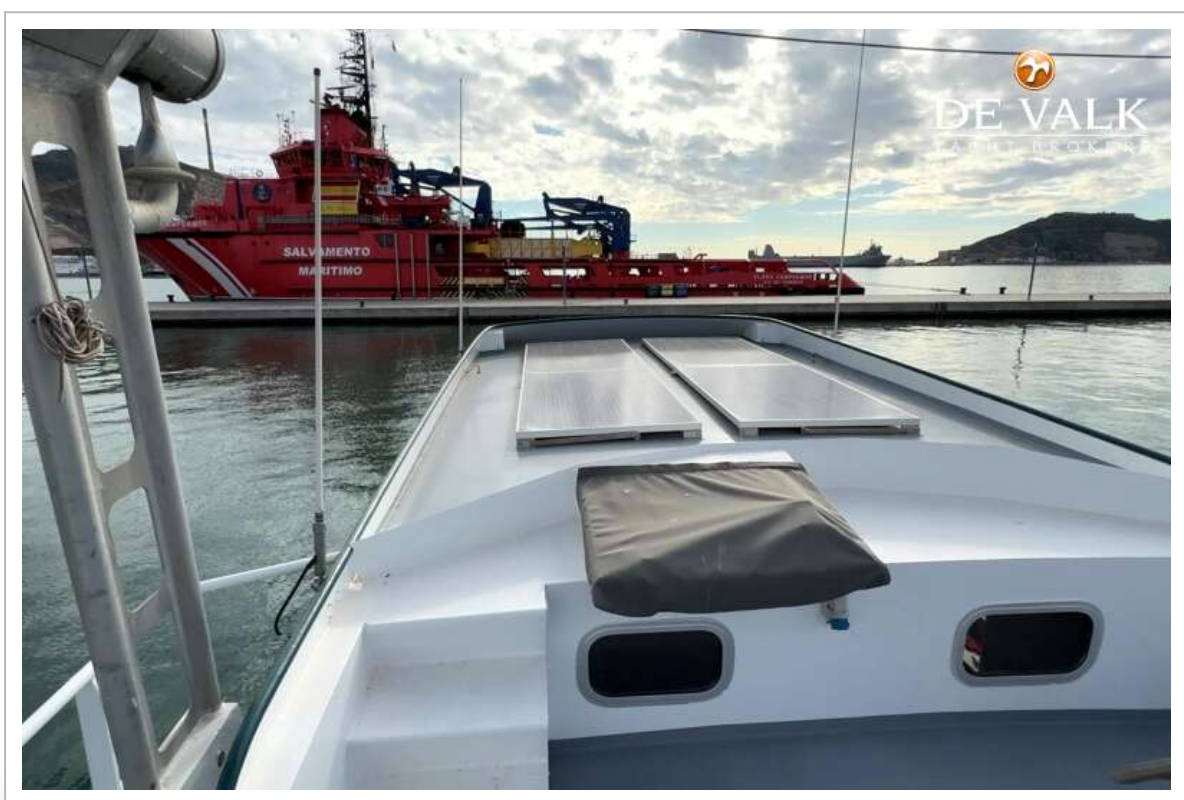
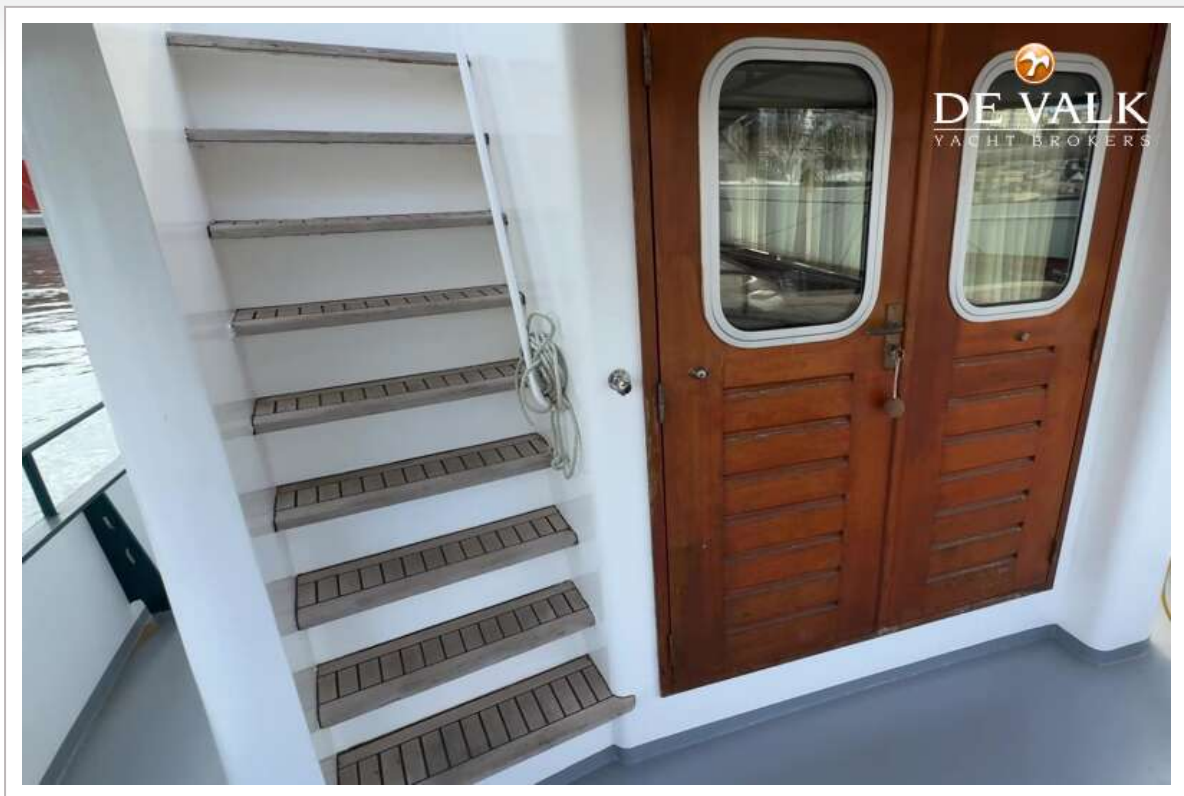
TRAWLER YACHT ONE-OFF 18.5 M



TRAWLER YACHT ONE-OFF 18.5 M



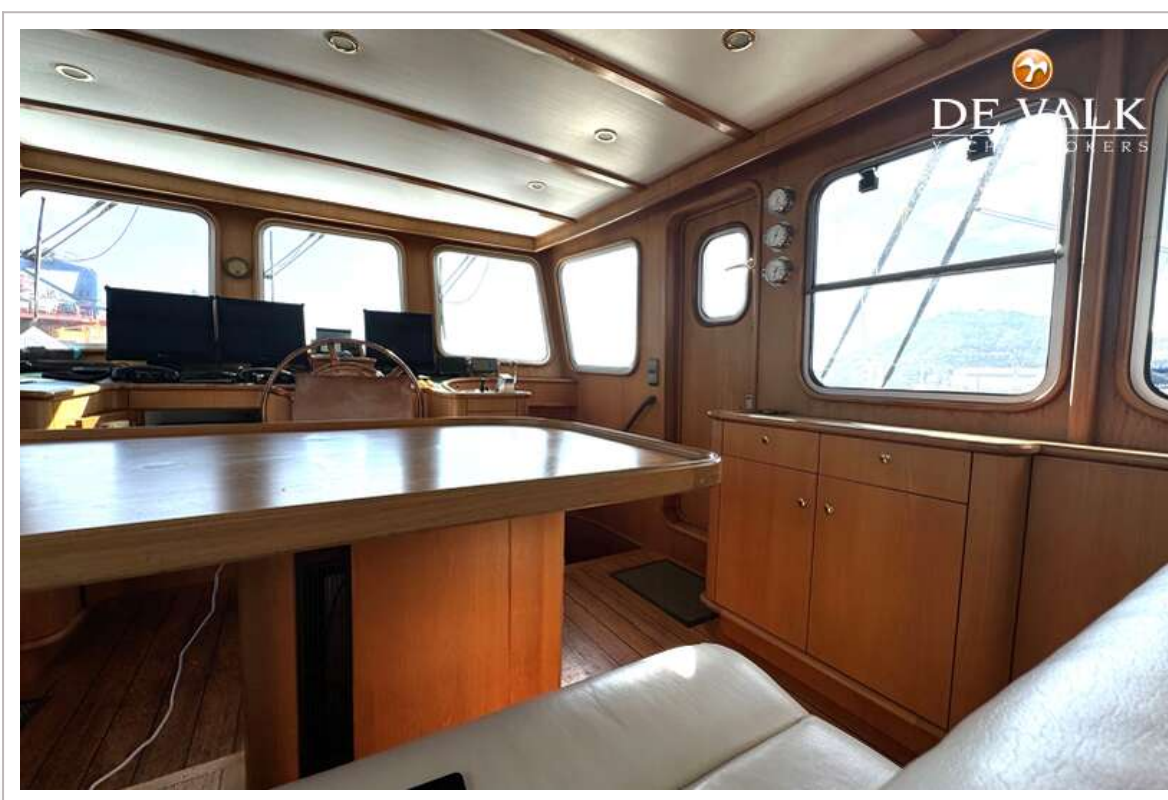
TRAWLER YACHT ONE-OFF 18.5 M



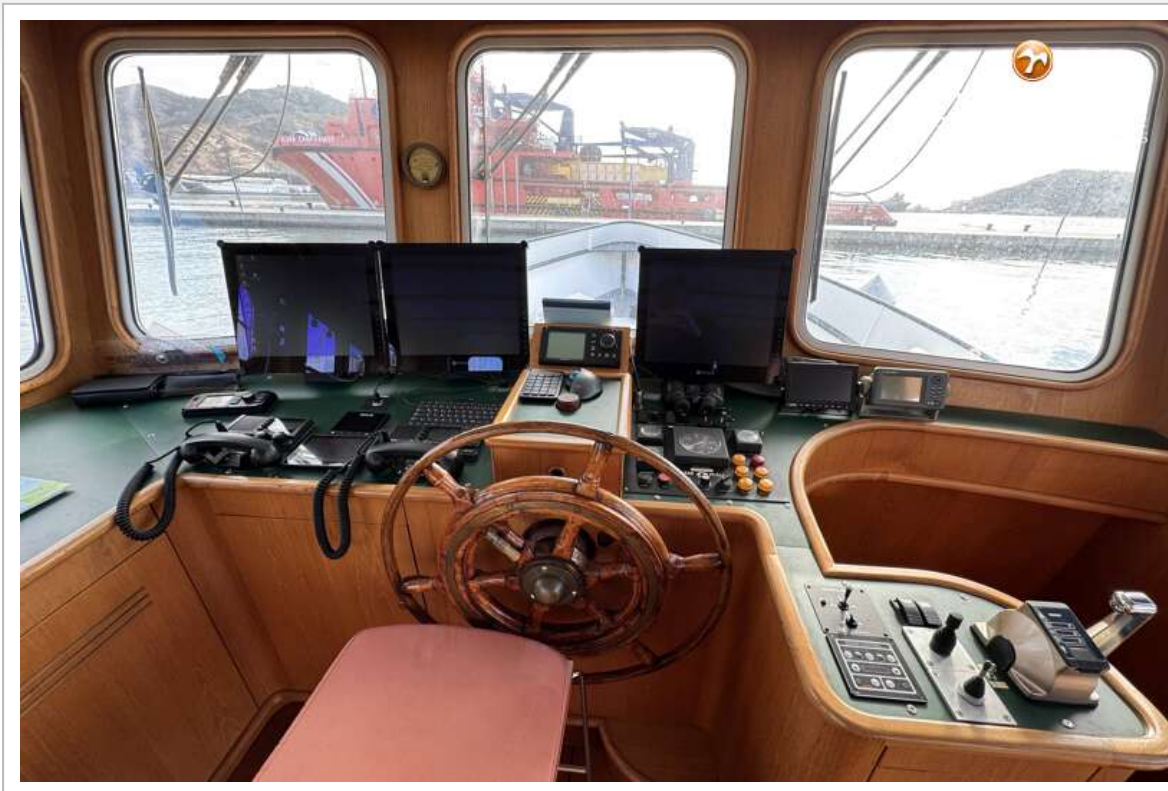
TRAWLER YACHT ONE-OFF 18.5 M



TRAWLER YACHT ONE-OFF 18.5 M



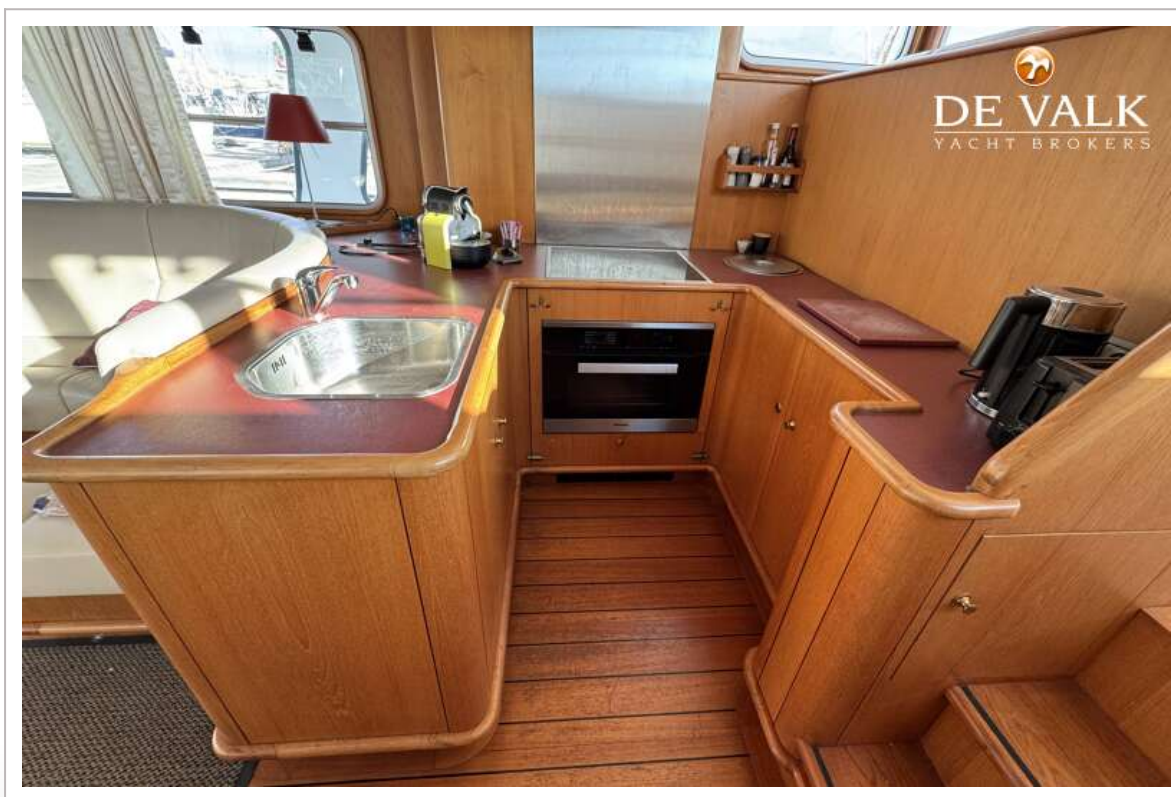
TRAWLER YACHT ONE-OFF 18.5 M



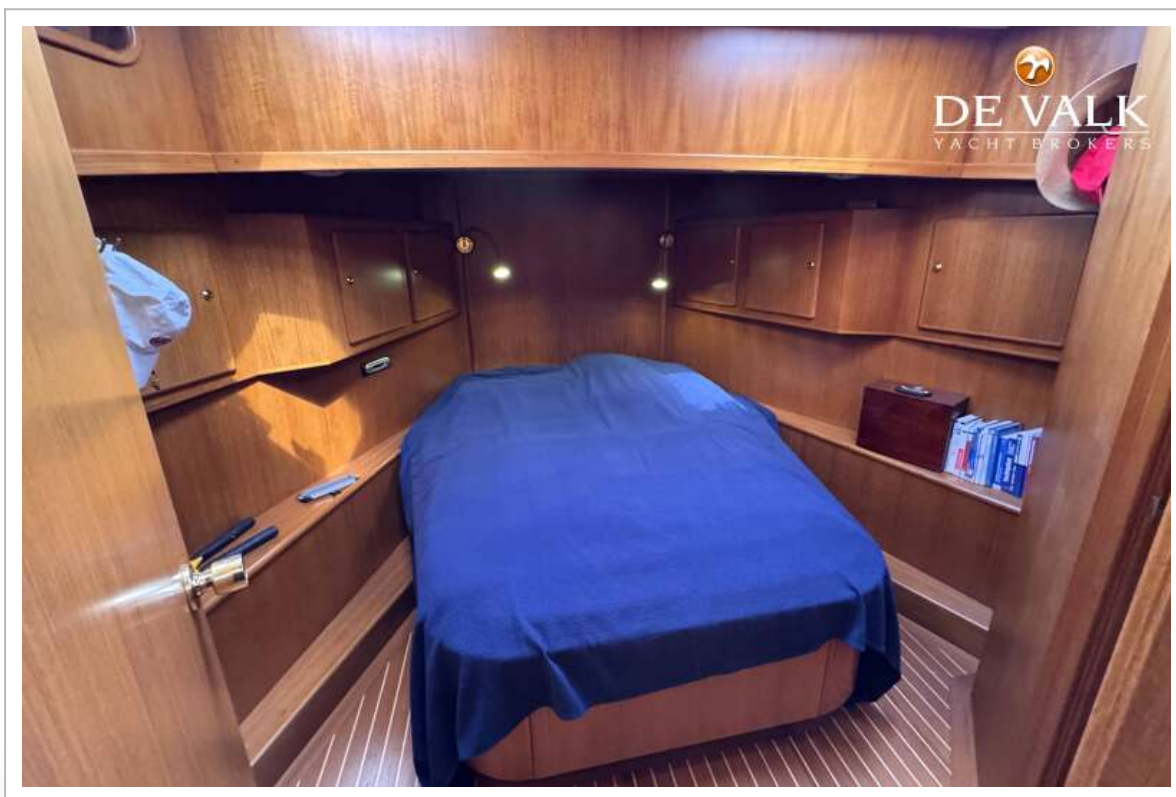
TRAWLER YACHT ONE-OFF 18.5 M



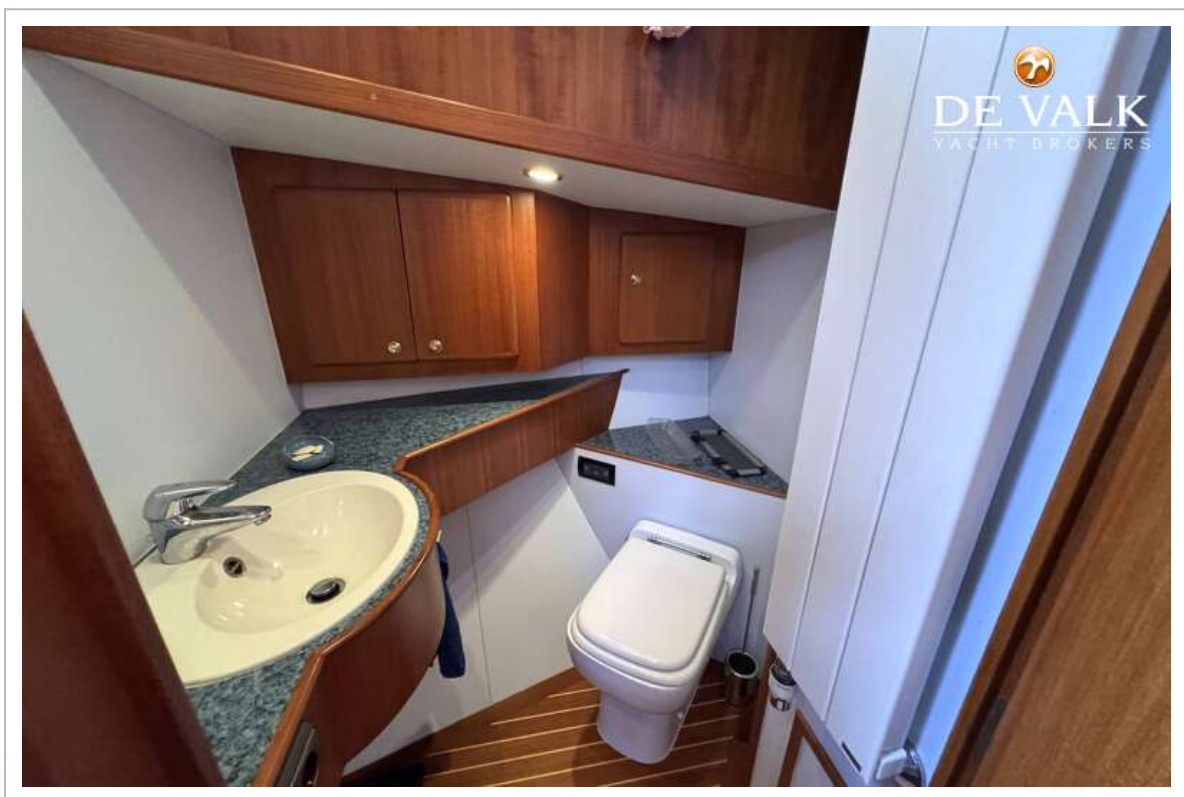
TRAWLER YACHT ONE-OFF 18.5 M



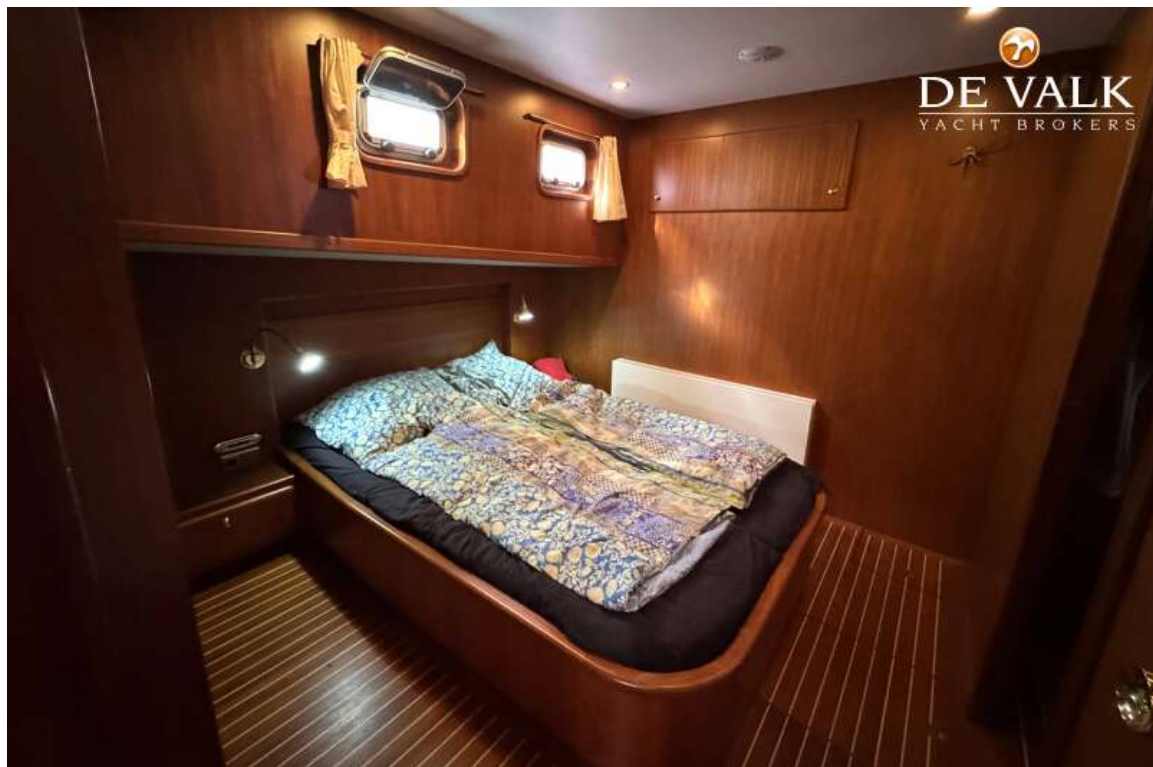
TRAWLER YACHT ONE-OFF 18.5 M



TRAWLER YACHT ONE-OFF 18.5 M



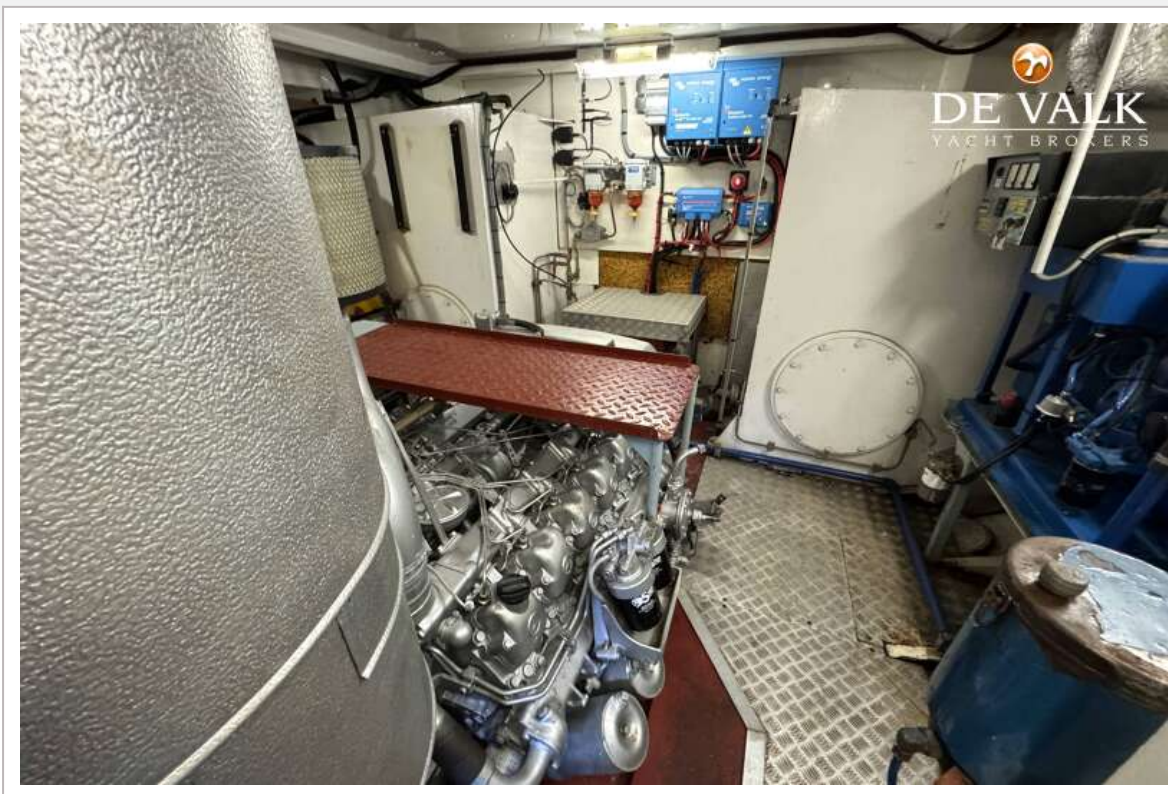
TRAWLER YACHT ONE-OFF 18.5 M



TRAWLER YACHT ONE-OFF 18.5 M



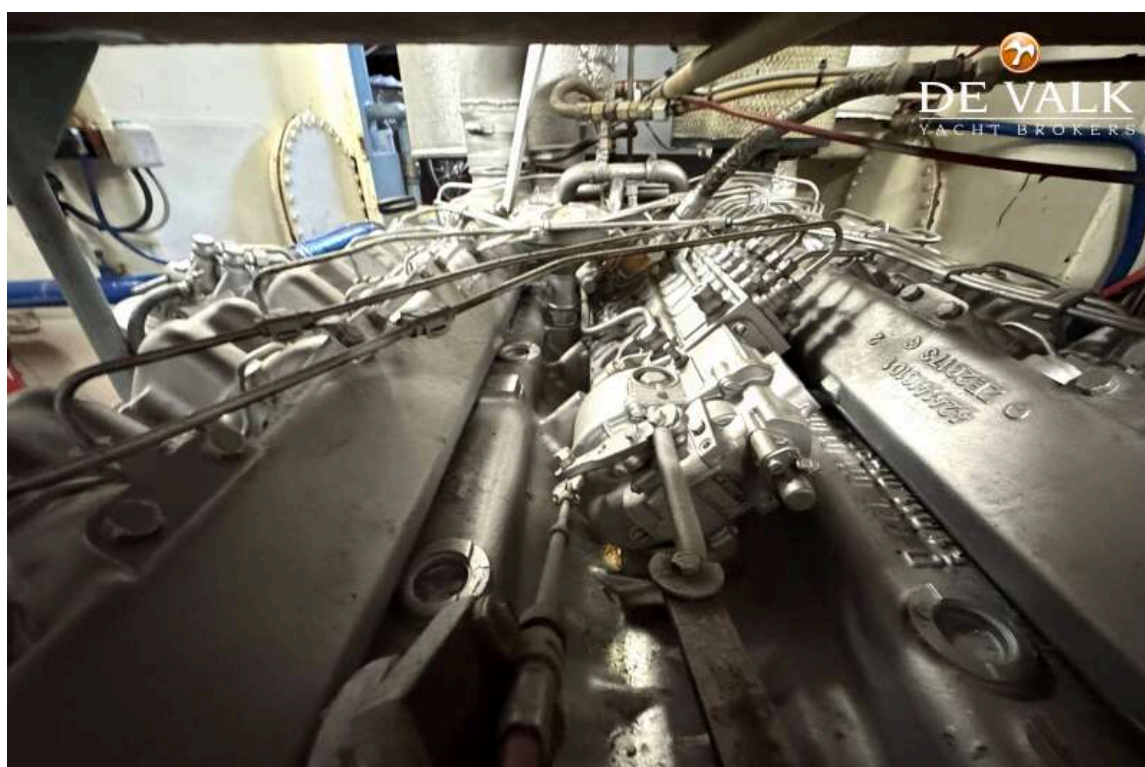
TRAWLER YACHT ONE-OFF 18.5 M



TRAWLER YACHT ONE-OFF 18.5 M



TRAWLER YACHT ONE-OFF 18.5 M



TRAWLER YACHT ONE-OFF 18.5 M

