



DE VALK
YACHT BROKERS



ROBERTSON & CAINE ONE OFF



DE VALK
YACHT BROKERS

BROKER'S COMMENTS

This is a very strong 55ft Cat, solidly built by Robertson & Caine with carbon epoxy reinforcements at the vital points and stringers in the bow sections to enable her to sail to high latitudes in safety. She is set up for long distance sailing by a couple without the need to leave the cockpit. The Tibay is offered without mast that was lost at sea. The cost of new mast and rigging is est. at €70k. This is a very attractive fast sailing Cat for those that are looking for a safe "go anywhere" Cat to explore the 7 seas.

Reinoud Bicker Caarten

SPECIFICATIONS

Dimensions	16.80 x 8.60 x 1.40 (m)	Builder	Robertson & Caine
Built	1992	Cabins	3
Material	GRP	Berths	6
Engine(s)	2 x Yanmar 3JH4E diesel	Hp/Kw	2 x 39.00 (hp), 28.70 (kw)
Asking price	€ 325.000 (VAT Not paid)	Lying	contact sales office

CONTACT

Sales office	De Valk Portugal	Telephone	+351 308 812321
Address	Edifício Administrativo - Ponta da Areia 8500 - 345 Portimão PT	E-mail	portugal@devalk.nl

DISCLAIMER

These particulars are given in good faith as supplied but cannot be guaranteed.



GENERAL

Model	ROBERTSON & CAINE ONE OFF
Type	catamaran sailing yacht
LOA (m)	16,80
Beam (m)	8,60
Draft (m)	1,40
Air draft (m)	27,00
Headroom (m)	1,95
Year built	1992
Builder	Robertson & Caine
Country	South Africa
Displacement (t)	16,7
Ballast (tonnes)	Wood
Gross tonnage	39
CE norm	A
Hull material	GRP
Hull colour	off-white
Keel type	fin keel
Superstructure material	GRP
Deck material	GRP
Deck finish	non-skid paint
Superstructure deck finish	non-skid paint
Cockpit deck finish	non-skid paint
Antifouling (year)	2024 Silic one
Window frame	aluminium
Window material	polycarbonate New 2024
Deckhatch	10 small 4 large
Portholes	aluminium 10
Fuel tank (litre)	stainless steel 480L
Fuel tank 2 (litre)	stainless steel 220L
Level indicator (fuel tank)	yes



Fuel daytank (litre)	stainless steel 40L
Level indicator (daytank)	yes
Freshwater tank (litre)	stainless steel 500L
Level indicator (freshwater)	yes
Blackwater tank (litre)	polyethylene 140L
Blackwater tank extraction	deck extraction + pump
Greywater tank (litre)	polyethylene 22L
Wheel steering	mechanical
Outside helm position	mechanical In cockpit fixed hardtop
Emergency tiller	yes
More info on hull	Kevlar reinforced in bows and front of keel

ACCOMMODATION

Cabins	3
Berths	6
Interior	oak
Floor	teak and holly
Open cockpit	With fixed hardtop
Deck saloon	yes
Headroom saloon (m)	1,95
Navigation center	yes
Chart table	yes
Dinette to convert into berth	yes
Sliding door to cockpit	yes
Galley	Starboard hull
Countertop	corian Formica top
Sink	corian
Cooker	calor gas 3 burner
Microwave/oven combi	LG solardome
Fridge	155L
Freezer	Top load in saloon 140L



Hot water system	220V + engine
Water pressure system	electrical
Kettle	yes
Hot water tap	yes
Owners cabin	double bed
Bed length (m)	2,1m x 1,6m
Wardrobe	hanging and shelves
Bathroom	en suite
Toilet	en suite
Toilet system	electric
Wash basin	in the bathroom
Shower	separate
Guest cabin 1	double bed
Bed length (m)	2,1m x 1,6m
Wardrobe	hanging and shelves
Bathroom	en suite
Toilet	en suite
Toilet system	manual
Wash basin	in the bathroom
Shower	separate
Guest cabin 2	double bed
Bed length (m)	1,95m x 1,6m
Wardrobe	hanging/drawers/shelves
Bathroom	separate
Toilet	en suite
Toilet system	electric
Wash basin	in the bathroom
Shower	separate
Washing machine	6L

MACHINERY



No of engines	2
Make	Yanmar
Type	3JH4E
HP	39
kW	28.70
Fuel	diesel
Year installed	1992
Maximum speed (kn)	8.5
Cruising speed (kn)	5.5
Consumption (l/hr)	2
Range (nm)	1600
Engine hours	1200/1001
Drive	sail-drive
Saildrive seal	new 2024
Engine controls	bowden cable
Gearbox	mechanical
Exhaust	watercooled
Propeller type	feathering
Propeller blades	3
Propeller shaft material	stainless steel
Shaft lubrication	oilbath
Electric bilge pump	2x hull 2x engine room
Electrical installation	fitted for US waters 12V / 220V + 110V
Generator	wet exhaust Mastervolt whisper 8Kva 6,4kw
Running hours generator	yes
Batteries	1400Ah 8units lithium bank
Generator battery	yes
Battery monitor	EMUS mgt system
Battery charger	2x mastervolt chargemaster 12/100/3
Inverter	2x Pure sine 240/3000w and 240/1500w
Wind generator	2x silent wind
Solar panel	14x 50w



Shorepower	with cable
Insulation transformer	yes
Watermaker	PUR desalinator 12V 12L/h Village Marine 240V 120L/h

NAVIGATION

Compass	2x Plastimo
Compass on flybridge	yes
Electric compass	Halycon
Multi control display	Garmin
Depth sounder/log	B&G Hydra
Forw. looking depth sounder	Echopilot Color
Windset	B&G Hydra
Repeater	yes
Fish finder	yes
VHF	Silva
Autopilot	NKE Gyropilot Hydraulic
GPS	NKE and B&G
Plotter/GPS	Garmin GPS map 740s
AIS transceiver	Digital Yacht class B
Radio receiver	Furuno SSB SF1502
EPIRB	yes
Navigation lights	yes
Loudhailer	yes

EQUIPMENT

Fixed windscreen	yes
Fixed hardtop	With side screens all round
Cockpit cushions	yes
Cockpit chairs	At steering positions
Bathing platform	yes
Boarding ladder	yes



Deck shower	yes
Anchor	Rocna 40kg
Anchor chain	10mm 100m Galvanized steel
Anchor 2	CQR Plough 40kg
Other ground tackle	Fortress 37 and Fortress 55
Windlass	electrical Lewmar 3000
Deck wash	yes
Dinghy	rigid hull Mako RIB 4m
Outboard	Yamaha 4st 9.9HP
Outboard support	yes
Sea railing	wire
Grab rail (superstructure)	stainless steel
Railing side opening gates	yes
Life raft	container AVON 8pax
Lifejackets	8x vests 3x inflating jackets
Lifebuoy	yes
Danbuoy	yes
Safety lines on deck	yes
Horn	yes
Radar reflector	yes
Fenders	1o large 2 small
Mooring lines	10
Spare parts	Trampoline nets,generator etc
Tools	yes
Radio-cd player	yes
Cockpit speakers	yes
Speakers in salon	yes
Clock - barometer	yes
Fire extinguisher	2x new 2023

RIGGING



Jib	yes
Jib I	1
Genoa	2006 1
Gennaker	2006 1
Spinnaker	2006 2
Stormjib	2006 Never used
Genoa sheetwinches	manual 2x ST Lewmar ST56
Halyard winches	electric Lewmar ST52



ROBERTSON & CAINE ONE OFF



ROBERTSON & CAINE ONE OFF



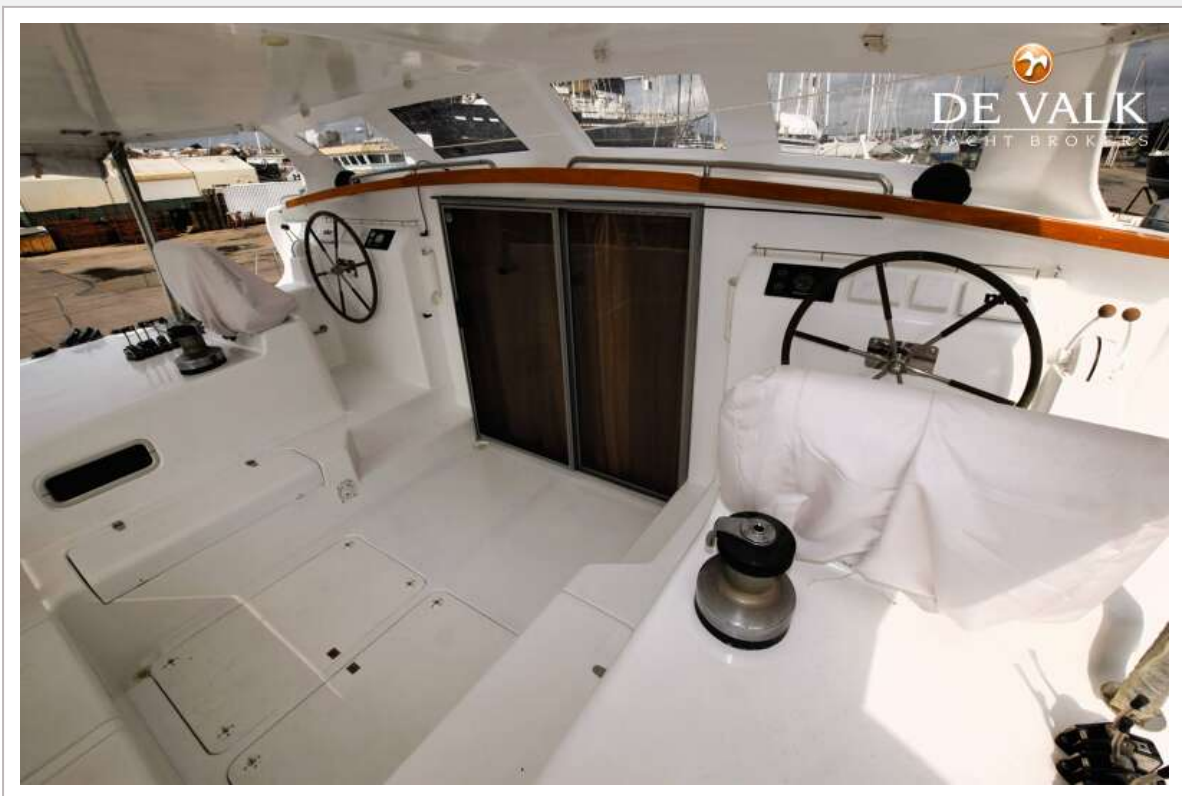
ROBERTSON & CAINE ONE OFF



ROBERTSON & CAINE ONE OFF



ROBERTSON & CAINE ONE OFF

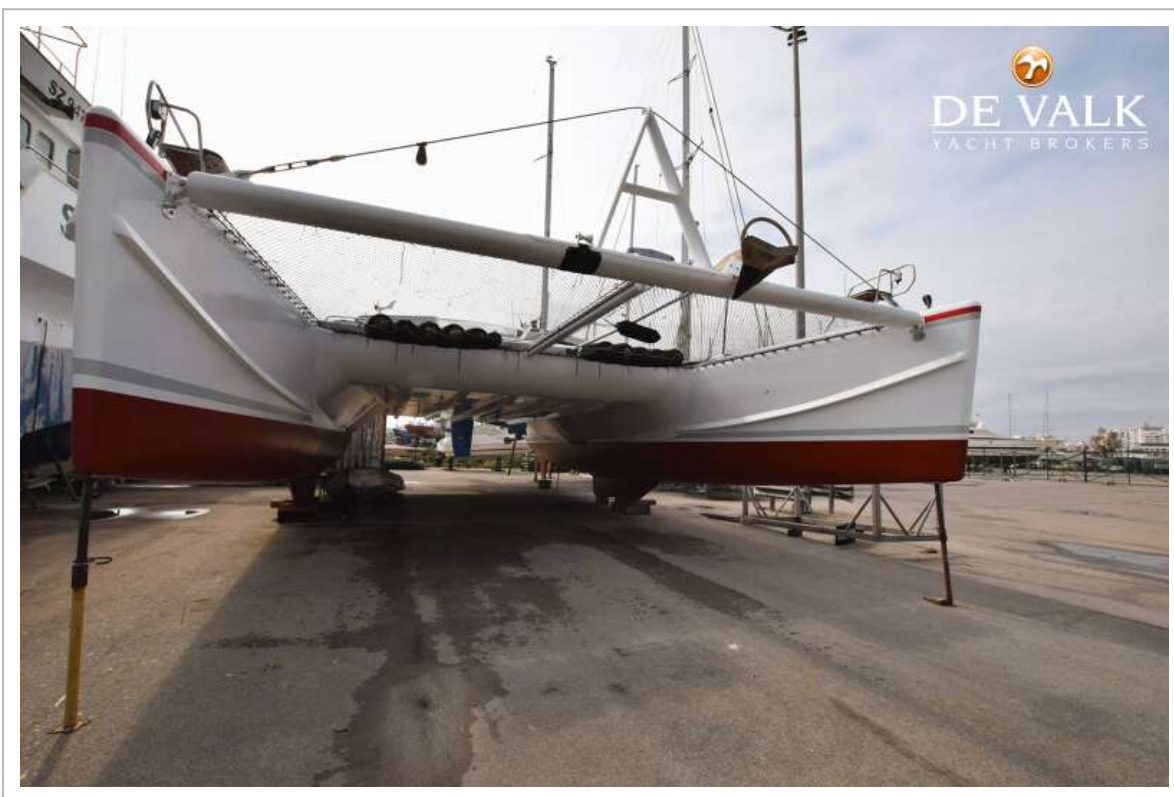
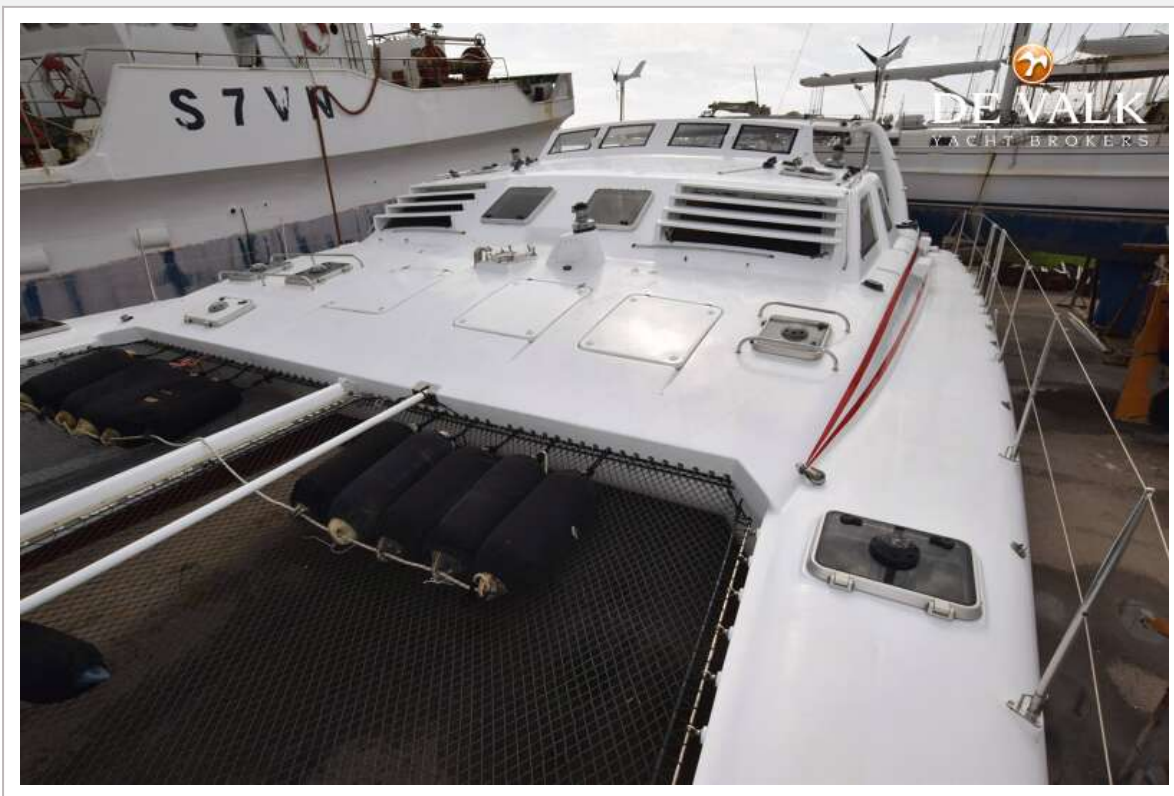


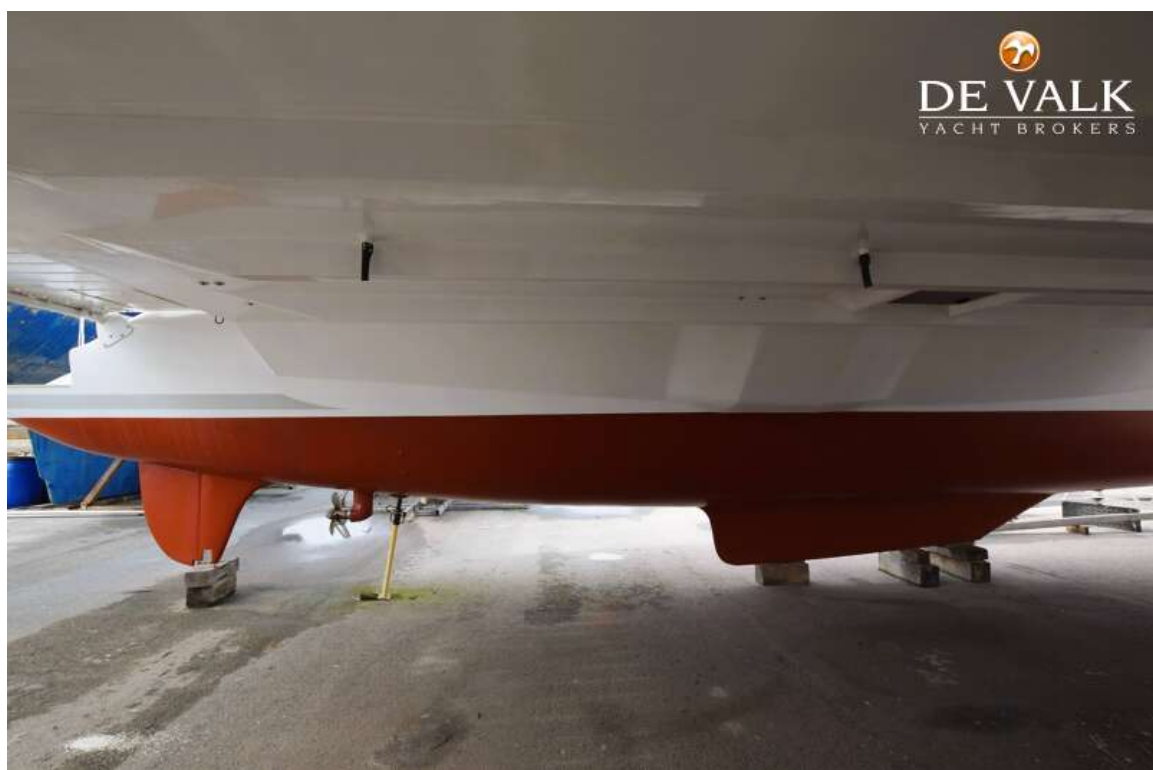
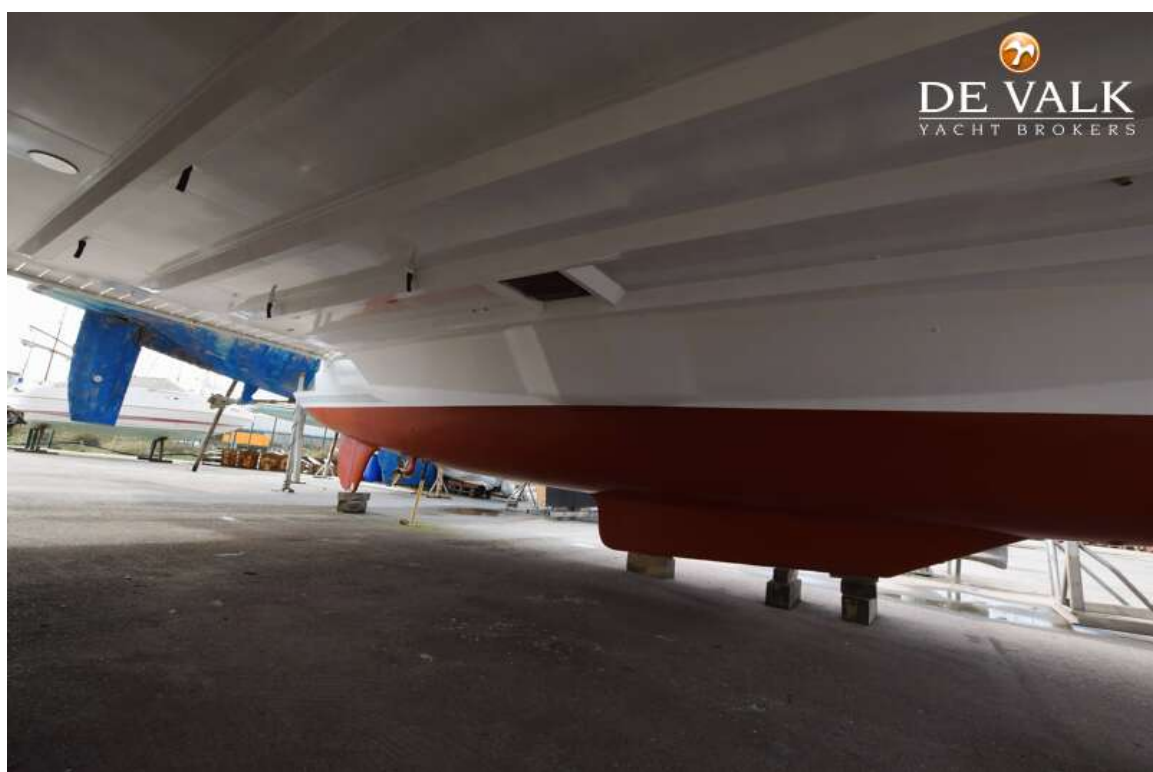


ROBERTSON & CAINE ONE OFF

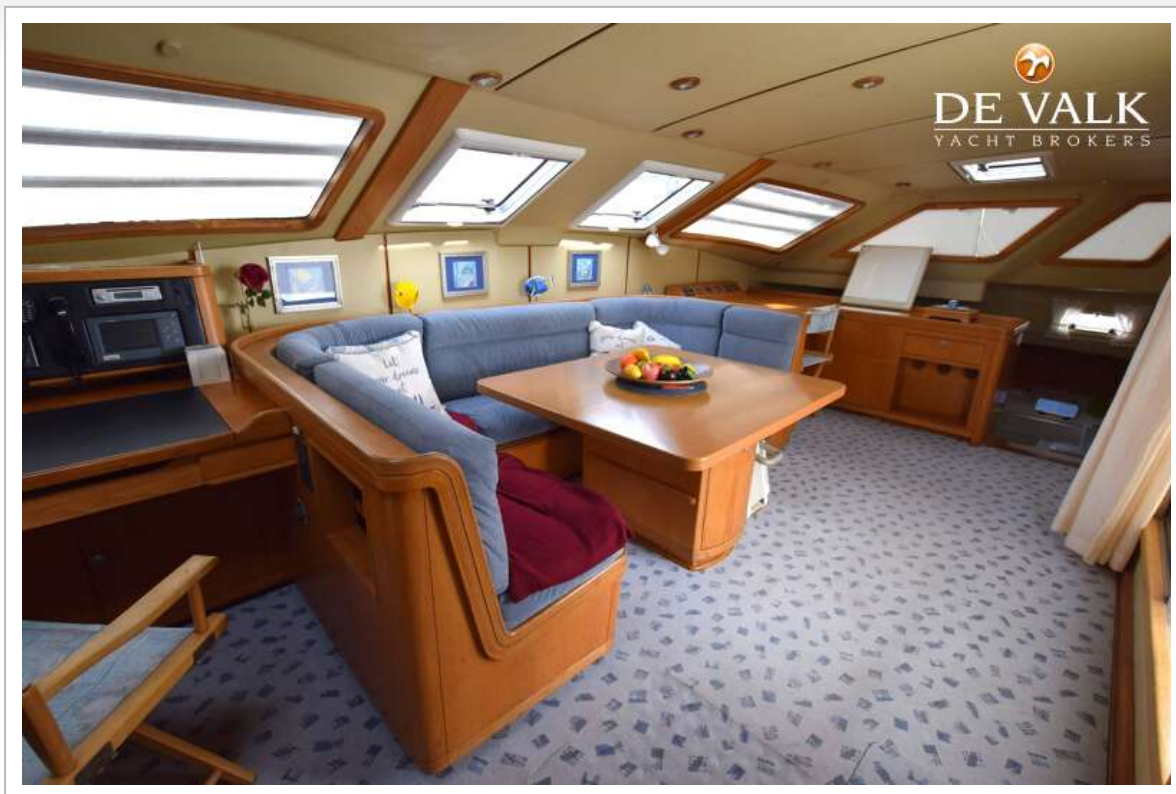


ROBERTSON & CAINE ONE OFF

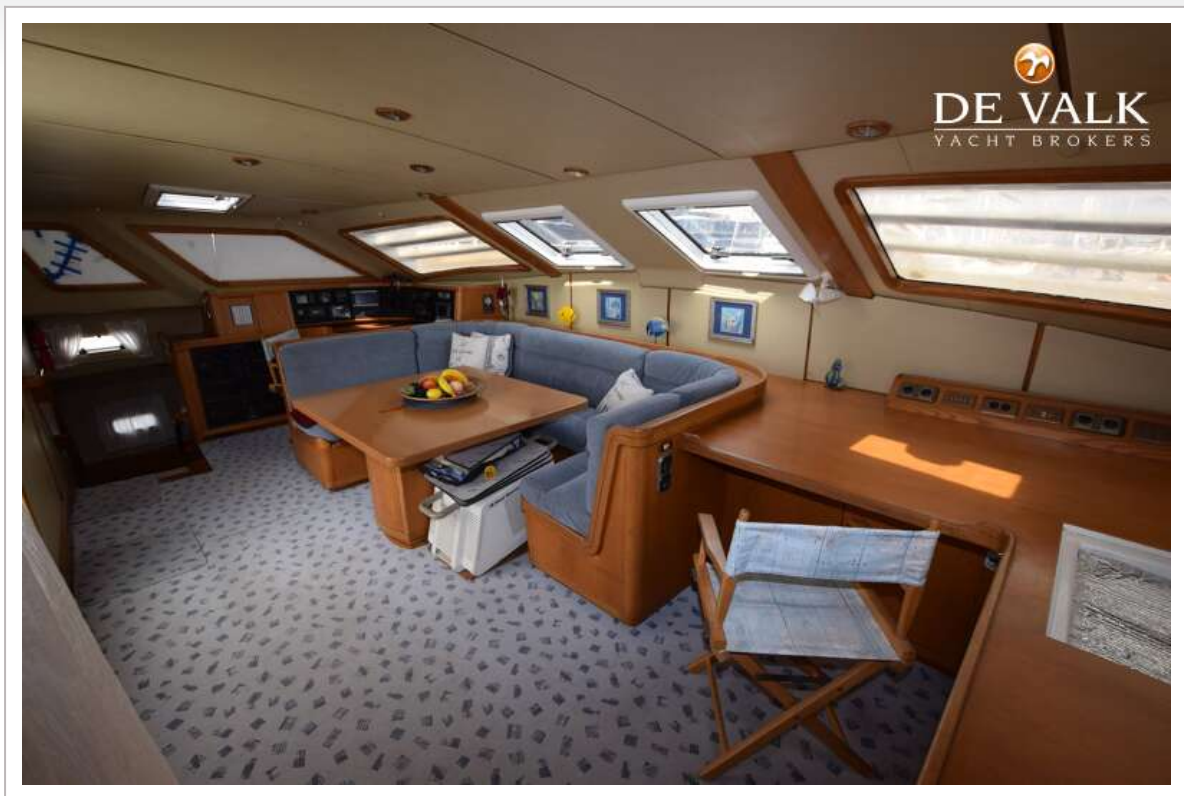




ROBERTSON & CAINE ONE OFF

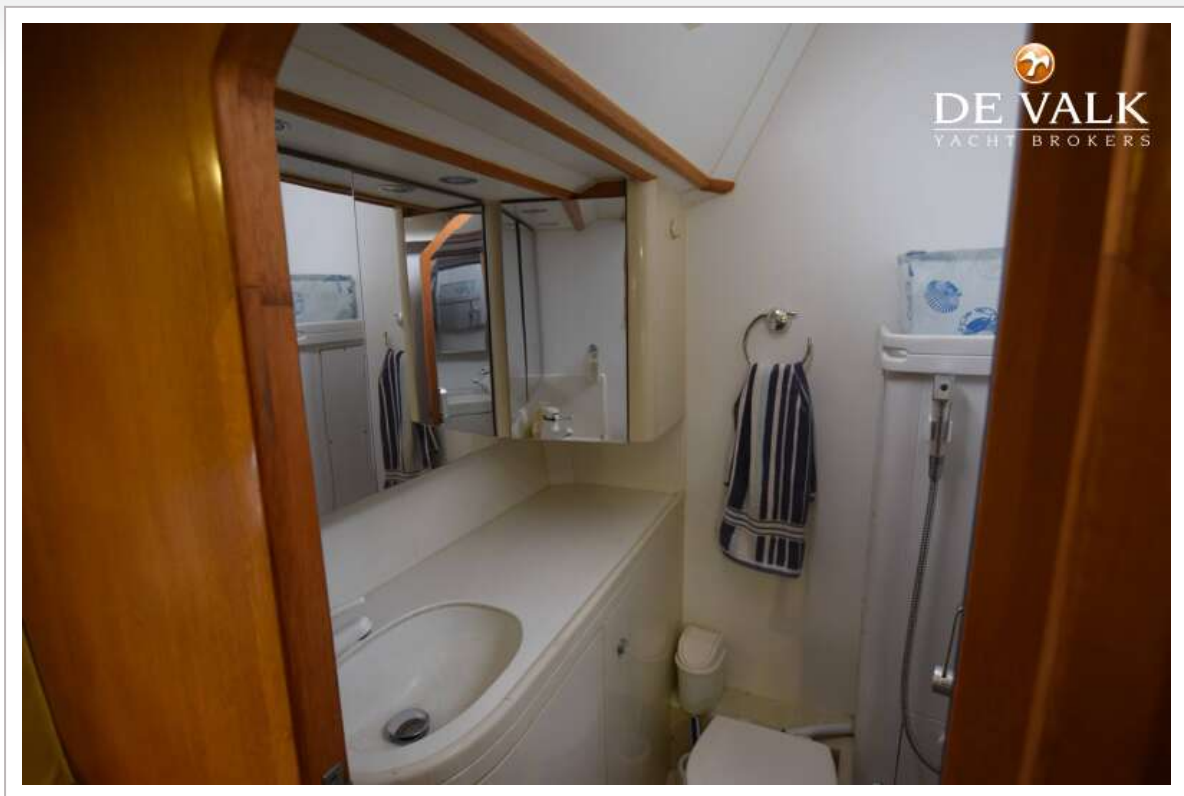


ROBERTSON & CAINE ONE OFF

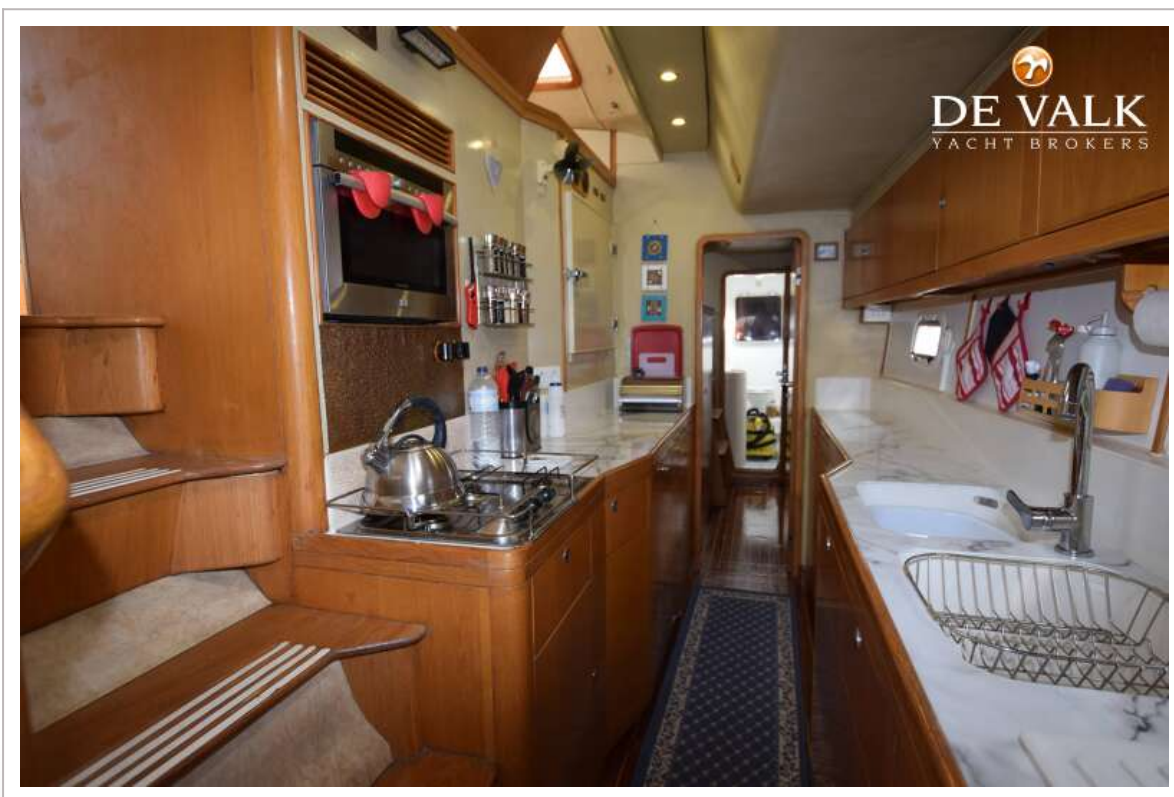
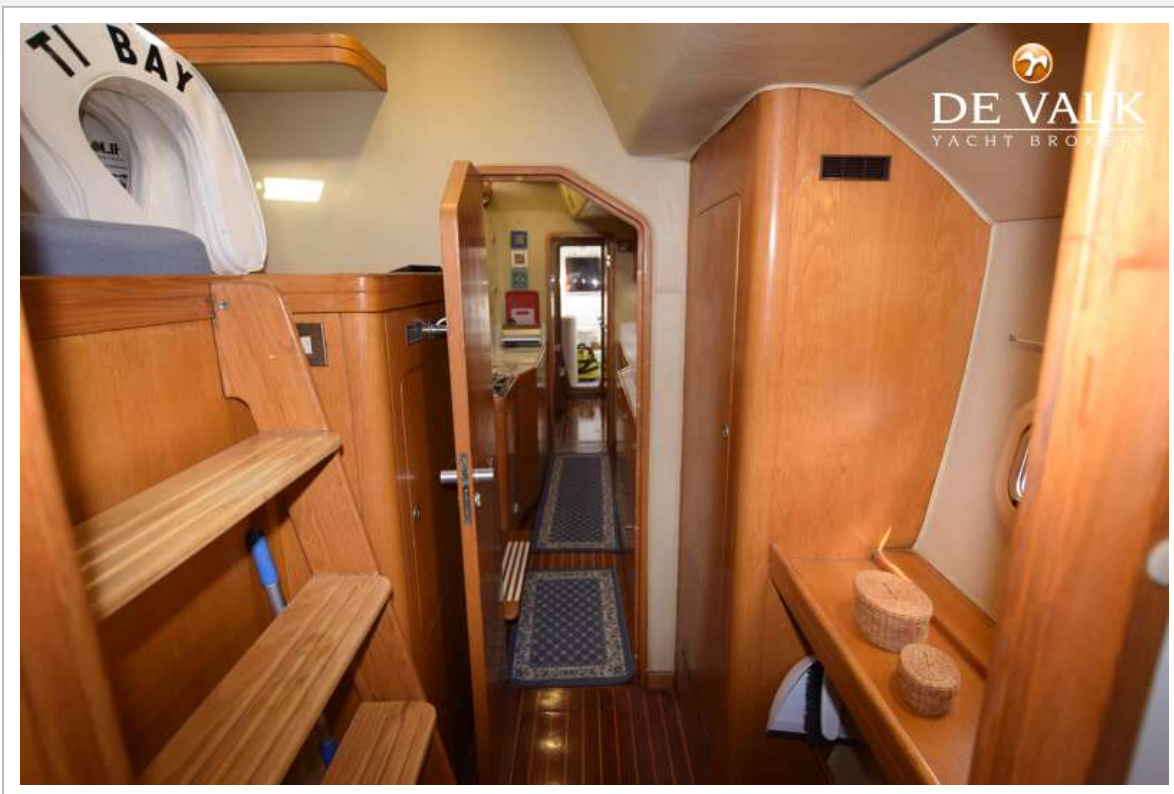


ROBERTSON & CAINE ONE OFF

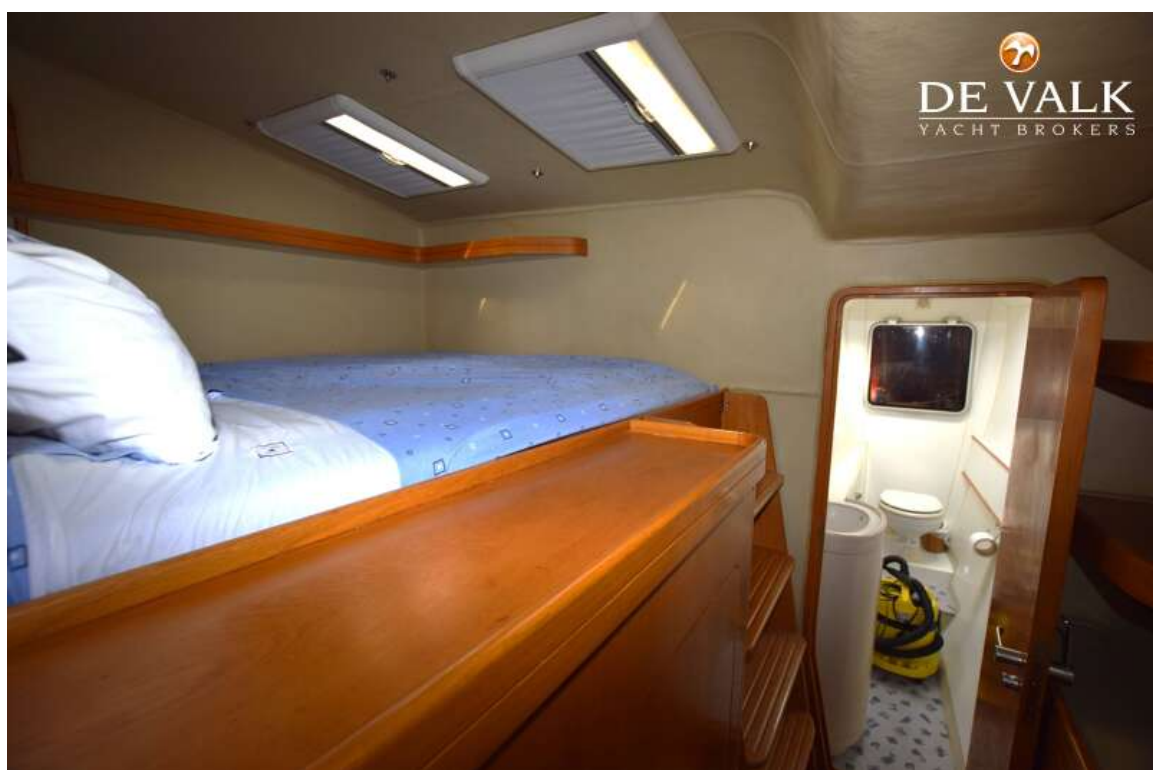




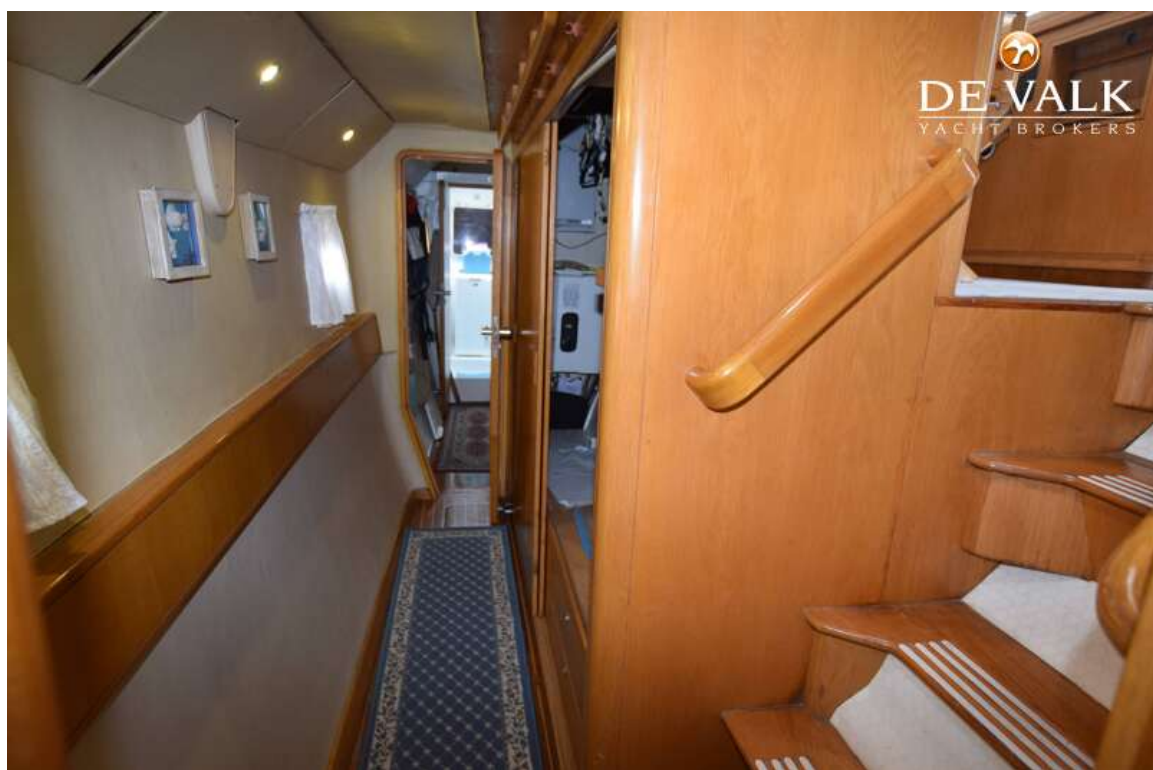
ROBERTSON & CAINE ONE OFF



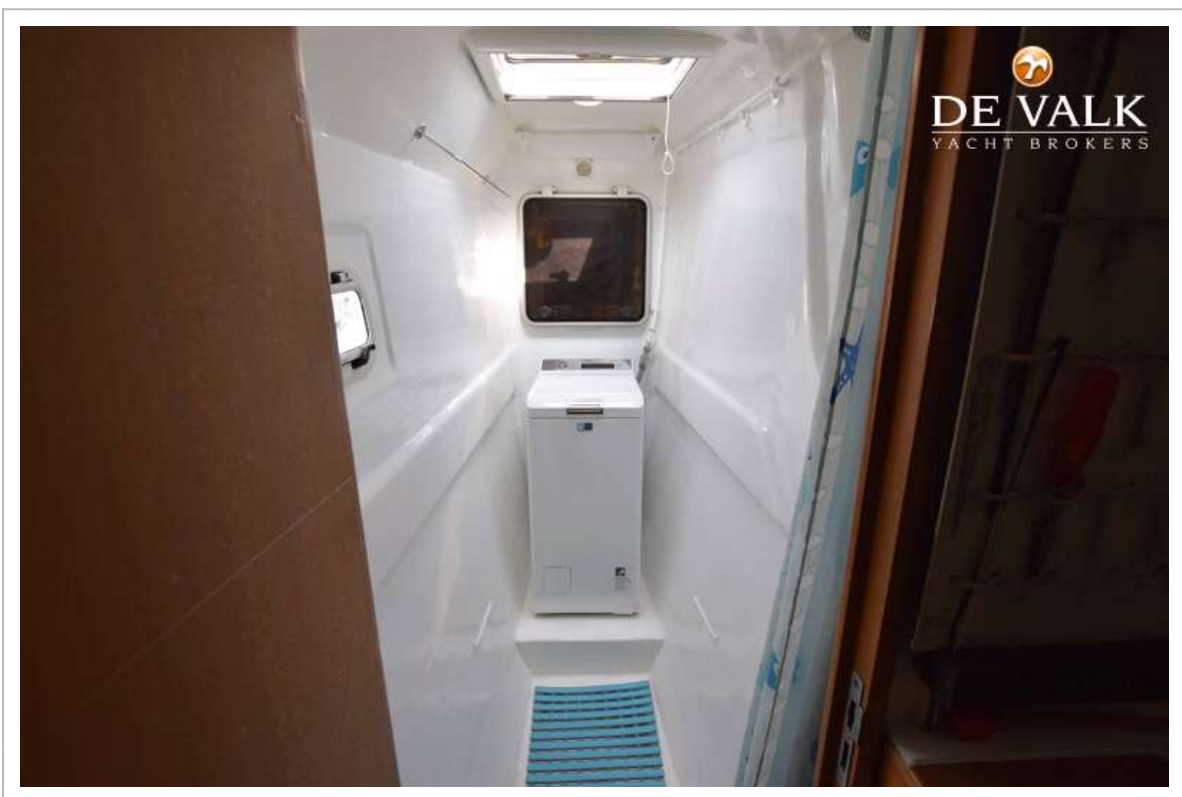
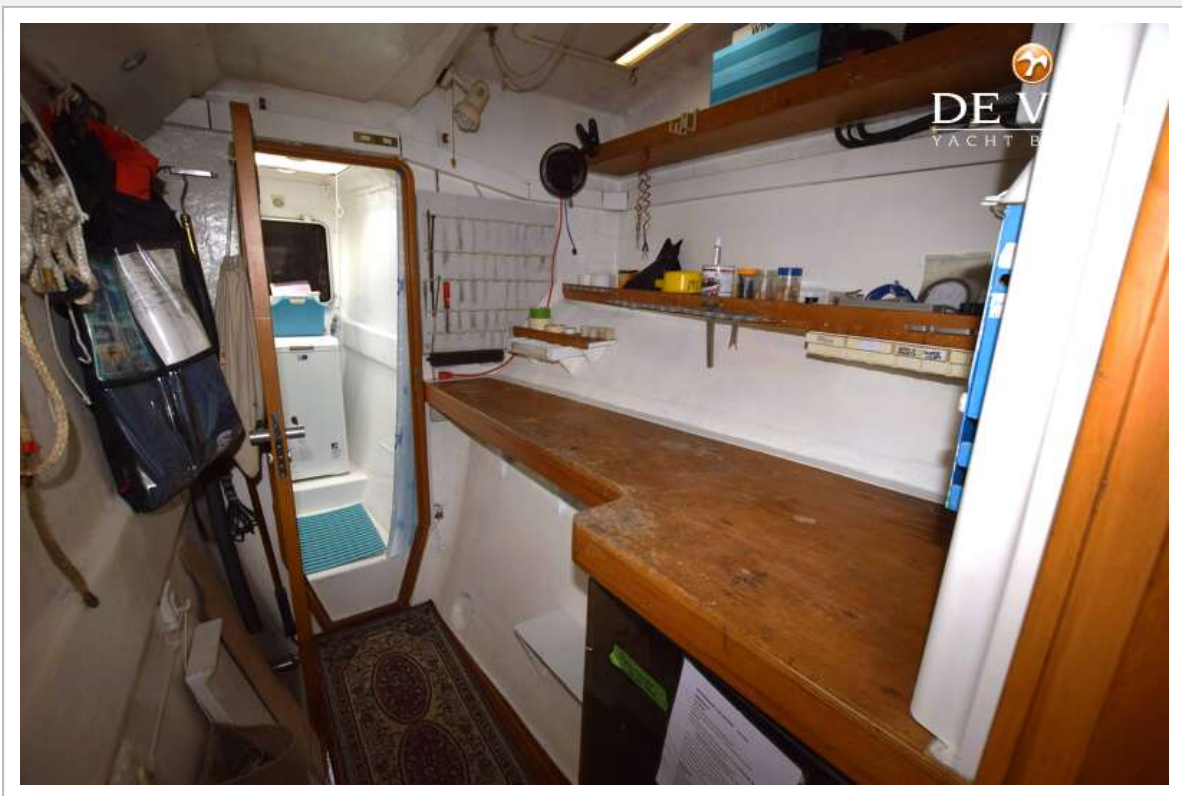
ROBERTSON & CAINE ONE OFF



ROBERTSON & CAINE ONE OFF



ROBERTSON & CAINE ONE OFF



ROBERTSON & CAINE ONE OFF

