



DE VALK  
YACHT BROKERS



## GALEON 530 FLY



DE VALK  
YACHT BROKERS

# GALEON 530 FLY

## BROKER'S COMMENTS

This well-maintained Galeon 530 Fly from 2007 is a spacious and comfortable flybridge yacht with excellent sailing characteristics, powered by 2x Volvo Penta D12-800 engines. She has benefited from several upgrades, including new upholstery, davits, and a renewed radio system, contributing to a well-kept appearance. Below deck, the generous layout immediately stands out with a full-beam master cabin, offering exceptional space and comfort across the full width of the vessel. The Galeon 530 Fly combines luxury, space, and powerful performance and is available for viewing in center Netherlands.

*Joris van de Rijt*

## SPECIFICATIONS

<b>Dimensions</b>	16.26 x 4.76 x 1.39 (m)	<b>Builder</b>	Galeon yachts
<b>Built</b>	2007	<b>Cabins</b>	3
<b>Material</b>	GRP	<b>Berths</b>	6
<b>Engine(s)</b>	2 x Volvo Penta D12-800 diesel	<b>Hp/Kw</b>	2 x 775.00 (hp), 570.40 (kw)
<b>Asking price</b>	€ 389.000 (VAT Paid)	<b>Lying</b>	elsewhere / Not at sales office

## CONTACT

<b>Sales office</b>	De Valk Sint Annaland B.V.	<b>Telephone</b>	+31 166 601 000
<b>Address</b>	Koelhuisweg 4 4697 RM Sint Annaland NL	<b>E-mail</b>	sintannaland@devalk.nl

## DISCLAIMER

These particulars are given in good faith as supplied but cannot be guaranteed.



# GALEON 530 FLY

## GENERAL

<b>Model</b>	GALEON 530 FLY
<b>Type</b>	motor yacht
<b>LOA (m)</b>	16,26
<b>Beam (m)</b>	4,76
<b>Draft (m)</b>	1,39
<b>Air draft (m)</b>	5,45
<b>Headroom (m)</b>	2,00
<b>Year built</b>	2007
<b>Builder</b>	Galeon yachts
<b>Country</b>	Poland
<b>Designer</b>	Galeon Poland
<b>Displacement (t)</b>	24
<b>CE norm</b>	B
<b>Hull material</b>	GRP
<b>Hull colour</b>	white
<b>Hull shape</b>	deep-V
<b>Superstructure material</b>	GRP
<b>Rubbing strake</b>	stainless steel
<b>Deck material</b>	GRP
<b>Deck finish</b>	teak
<b>Superstructure deck finish</b>	non-skid moulded in
<b>Cockpit deck finish</b>	teak
<b>Antifouling (year)</b>	Winter 2024/2025
<b>Deckhatch</b>	yes
<b>Portholes</b>	9 x
<b>Flybridge</b>	yes
<b>Flybridge cover</b>	yes
<b>Radar arch</b>	non collapsible
<b>Fuel tank (litre)</b>	2 x 1100
<b>Level indicator (fuel tank)</b>	yes



# GALEON 530 FLY

Freshwater tank (litre)	550
Level indicator (freshwater)	yes
Blackwater tank (litre)	yes
Level indicator (blackwater)	yes
Blackwater tank extraction	deck extraction + pump
Greywater tank (litre)	yes
Wheel steering	hydraulic
Inside helm position	yes
Flybridge helm position	hydraulic

## ACCOMMODATION

Cabins	3
Berths	6
Floor	carpet (new 2026)
Deck saloon	yes
Saloon	yes
Headroom saloon (m)	2,00
Heating	diesel ducted hot air Webasto ThermoPro 90
Dinette	yes
Sliding door to cockpit	yes
Galley	yes
Countertop	corian
Sink	yes
Cooker	ceramic Siemens
Microwave/oven combi	Siemens
Fridge	In Galley + flybridge
Freezer	In fridge
Hot water system	220V + engine 50 ltr
Dishwasher	Whirlpool
Owners cabin	French bed With portholes on both sides
Bed length (m)	1,90 x 1,60



# GALEON 530 FLY

<b>Wardrobe</b>	hanging/drawers/shelves
<b>Bathroom</b>	en suite
<b>Toilet</b>	en suite
<b>Toilet system</b>	electric
<b>Wash basin</b>	in the bathroom
<b>Shower</b>	en suite
<b>Guest cabin 1</b>	v-bed
<b>Bed length (m)</b>	1,90 x 1,60
<b>Wardrobe</b>	hanging/drawers/shelves
<b>Bathroom</b>	en suite
<b>Toilet</b>	en suite
<b>Toilet system</b>	electric
<b>Wash basin</b>	in the bathroom
<b>Shower</b>	en suite
<b>Guest cabin 2</b>	bunk bed
<b>Bed length (m)</b>	1,90 x 0,70
<b>Wardrobe</b>	drawers and shelves
<b>Washing machine/dryer combi</b>	(new 2026)
<b>Wet bar</b>	With Elag LeMar Grill
<b>Extra info</b>	Uphulstery saloon sofa 2026

## MACHINERY

<b>No of engines</b>	2
<b>Make</b>	Volvo Penta
<b>Type</b>	D12-800
<b>HP</b>	775
<b>kW</b>	570.40
<b>Fuel</b>	diesel
<b>Year installed</b>	2007
<b>Engine hours</b>	696
<b>Engine cooling system</b>	freshwater heat exchanger



# GALEON 530 FLY

<b>Drive</b>	shaft
<b>Engine controls</b>	electrical + Hydronautica remote
<b>Gearbox</b>	hydraulic
<b>Bowthruster</b>	electric Sidepower
<b>Sternthruster</b>	electric Sidepower
<b>Propeller type</b>	fixed
<b>Propeller blades</b>	5
<b>Propeller shaft material</b>	stainless steel
<b>Electric bilge pump</b>	yes
<b>Electrical installation</b>	12/24/220V
<b>Generator</b>	Fisher Panda 10kW
<b>Running hours generator</b>	1242
<b>Batteries</b>	8 x 190Ah, 8 x 80Ah, 4 x 75Ah ,1x 70Ah (nieuw 2025)
<b>Battery charger/inverter</b>	Victron MultiPlus-II 24/3000/70 + Victron for Generator battery
<b>Shorepower</b>	with cable
<b>Trimtabs</b>	Volvo Penta

## NAVIGATION

<b>Compass</b>	Plastimo
<b>Depth sounder</b>	On Garmin plotter
<b>Repeater</b>	Raymarine ST60 Tridata with Depth and Speed
<b>VHF</b>	Garmin 215i AIS (2026)
<b>VHF handheld</b>	Cobra Marina HH350
<b>Autopilot</b>	Raymarine
<b>Radar</b>	Garmin
<b>Plotter</b>	Garmin 1223 XVS
<b>Wifi antenna</b>	yes
<b>Navigation lights</b>	yes
<b>Searchlight</b>	yes

## EQUIPMENT



# GALEON 530 FLY

<b>Fixed windscreen</b>	yes
<b>Cockpit cover</b>	yes
<b>Bimini</b>	yes
<b>Cockpit cushions</b>	+ flybridge cushions (all with new upholstery 2024)
<b>Bathing platform</b>	yes
<b>Boarding ladder</b>	stainless steel
<b>Transom door</b>	yes
<b>Deck shower</b>	yes
<b>Anchor</b>	Bruce
<b>Anchor chain</b>	yes
<b>Windlass</b>	electrical
<b>Dinghy</b>	Not included. Optional
<b>Outboard</b>	Not included. Optional
<b>Davits</b>	stainless steel (new 2026)
<b>Davits controls</b>	electrical
<b>Sea railing</b>	stainless steel
<b>Grab rail (superstructure)</b>	stainless steel
<b>Life raft</b>	container
<b>Wiper</b>	3 x Exalto
<b>Horn</b>	yes
<b>Fenders</b>	yes
<b>Mooring lines</b>	yes
<b>TV</b>	2 x WLAN TV
<b>Radio</b>	Fusion MS-RA770 (new 2026)
<b>Cockpit speakers</b>	On flybridge
<b>Speakers in salon</b>	Fusion (new 2026)
<b>Fire extinguisher</b>	yes
<b>Auto extinguisher system</b>	Fireboy FRA-1000
<b>Extra info</b>	Grey deck cushions



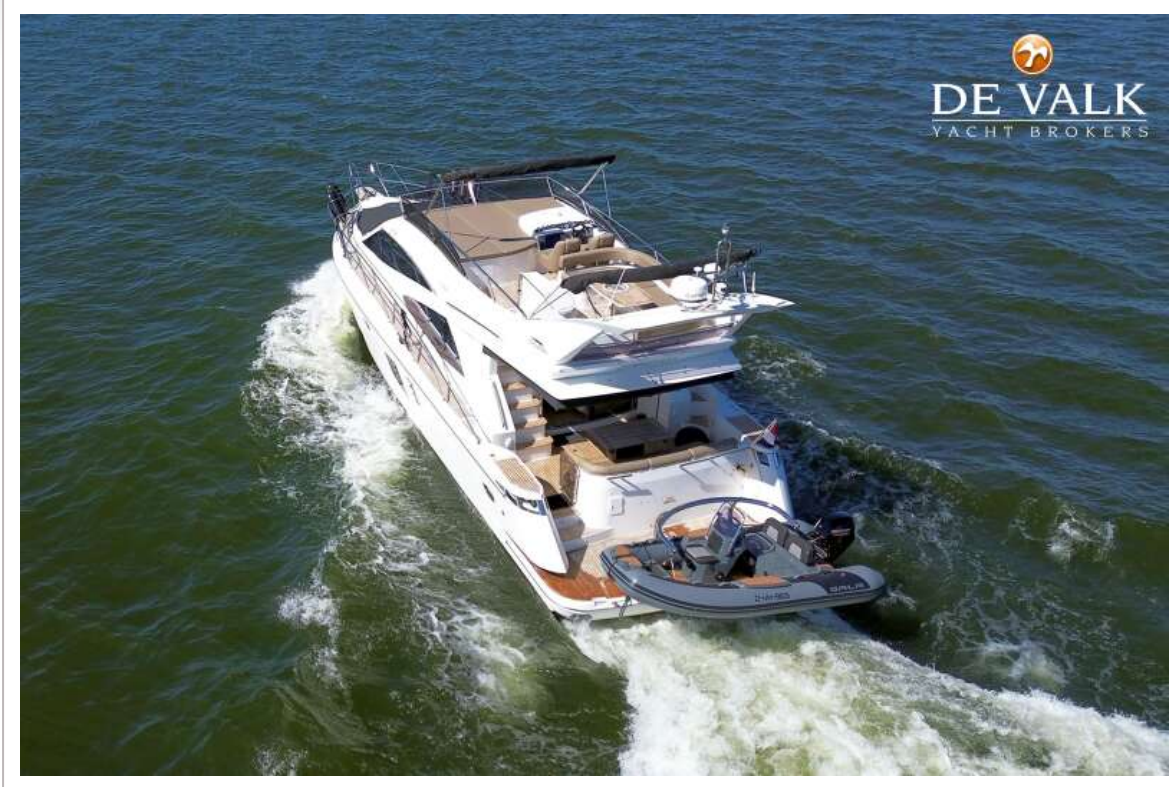
# GALEON 530 FLY



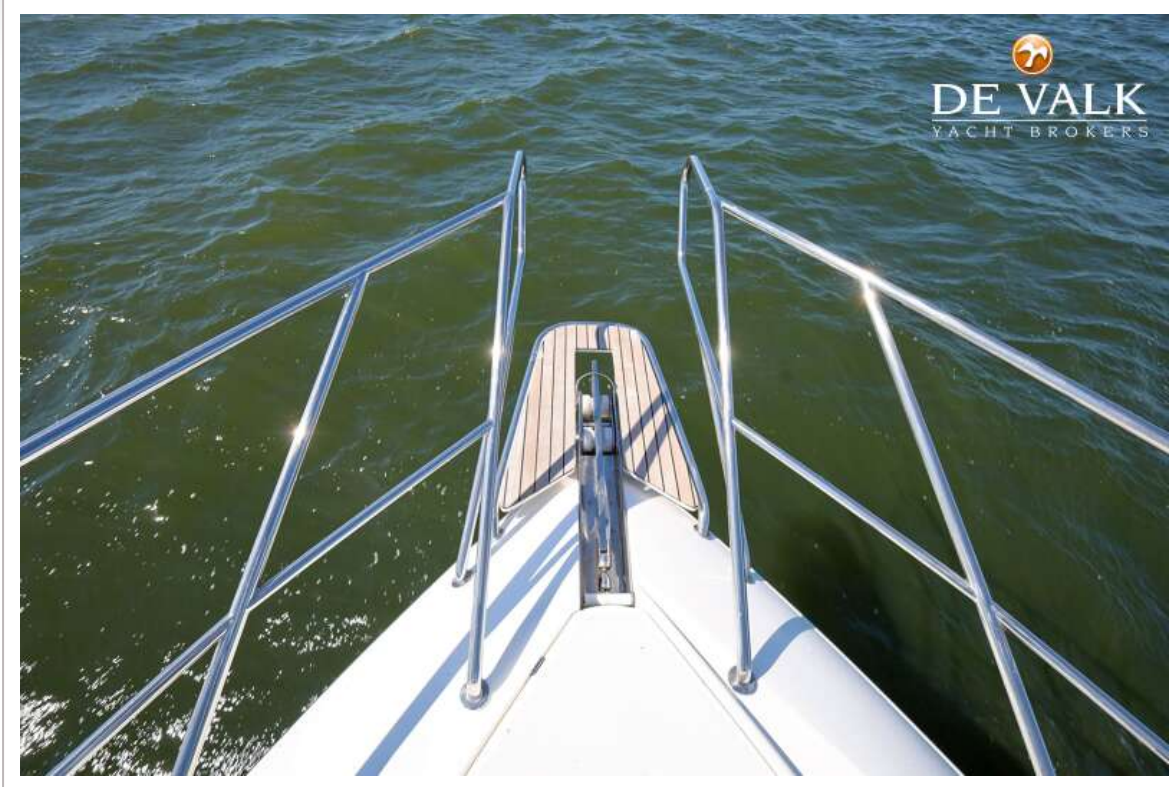
# GALEON 530 FLY



# GALEON 530 FLY



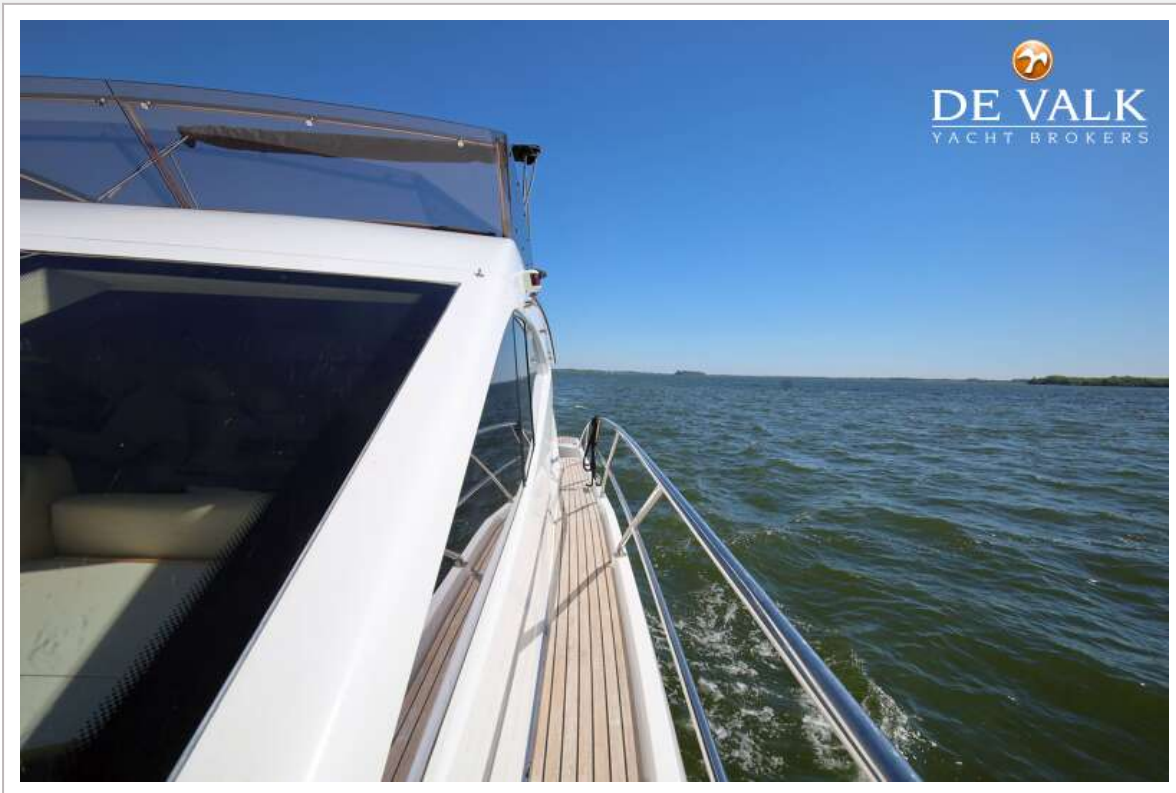
# GALEON 530 FLY



# GALEON 530 FLY



# GALEON 530 FLY



# GALEON 530 FLY



# GALEON 530 FLY



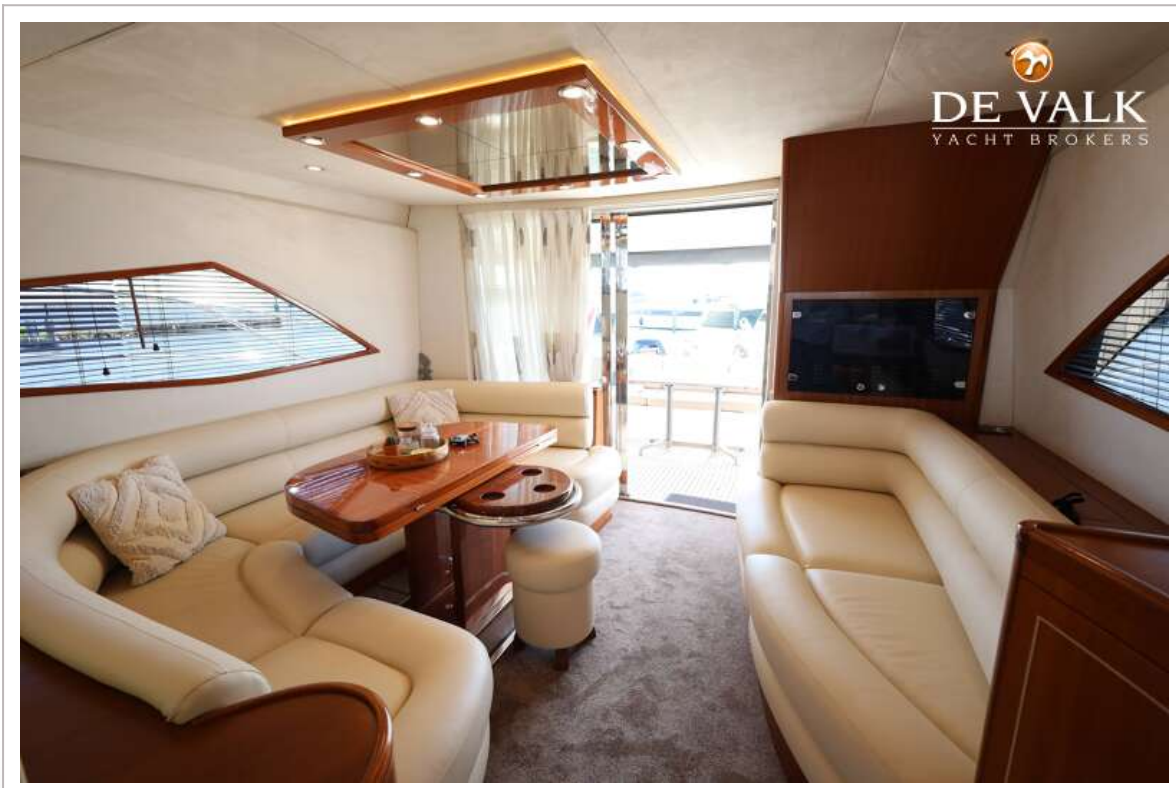
# GALEON 530 FLY



# GALEON 530 FLY



# GALEON 530 FLY



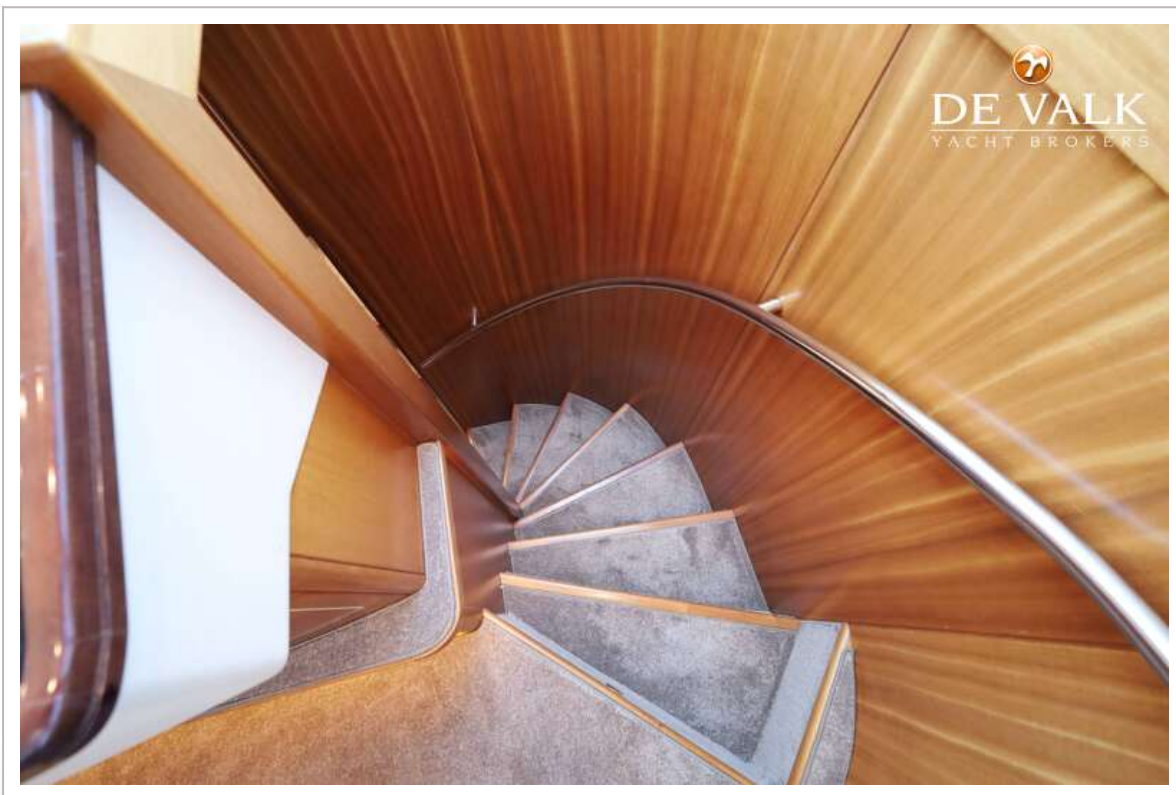
# GALEON 530 FLY



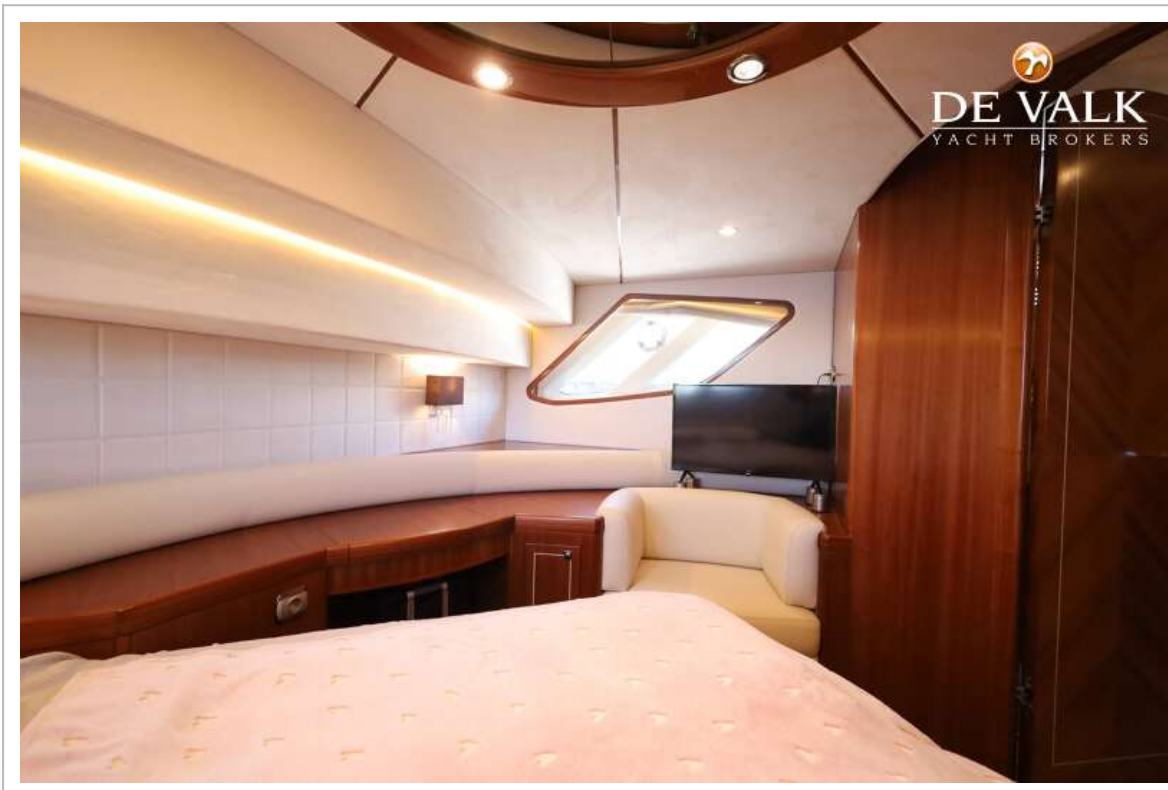
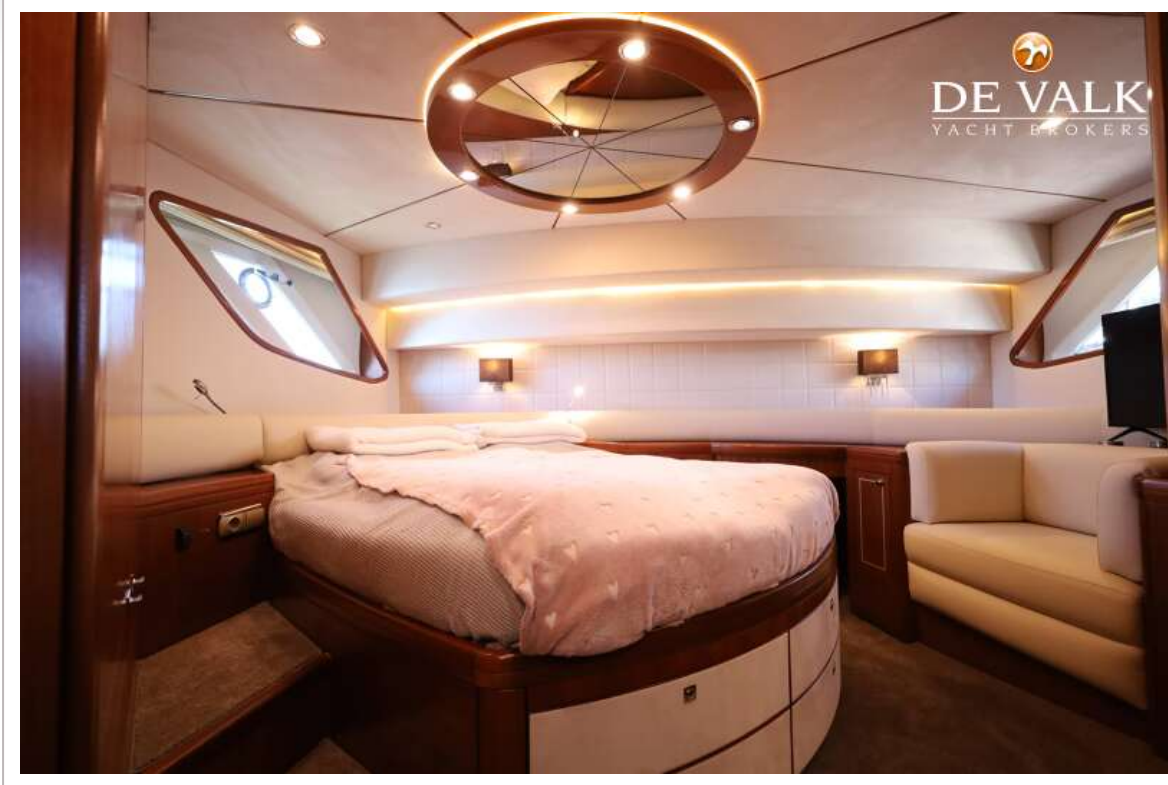
# GALEON 530 FLY



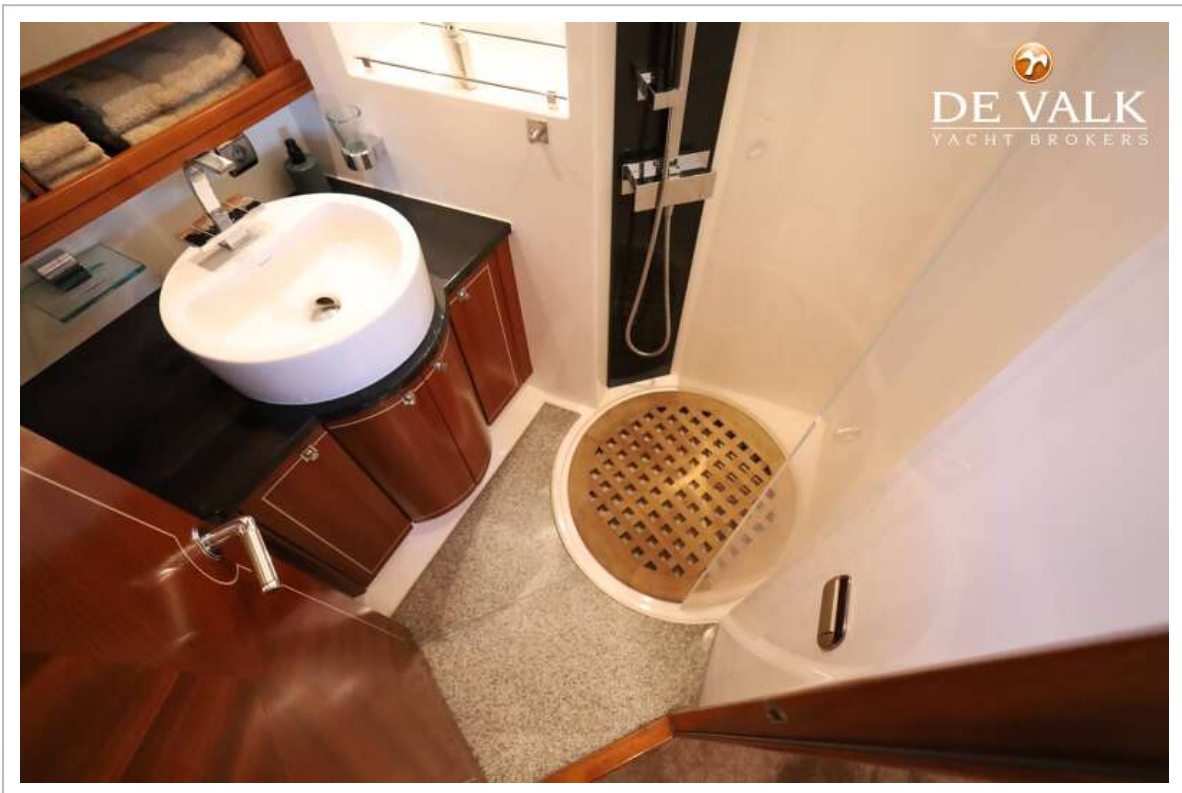
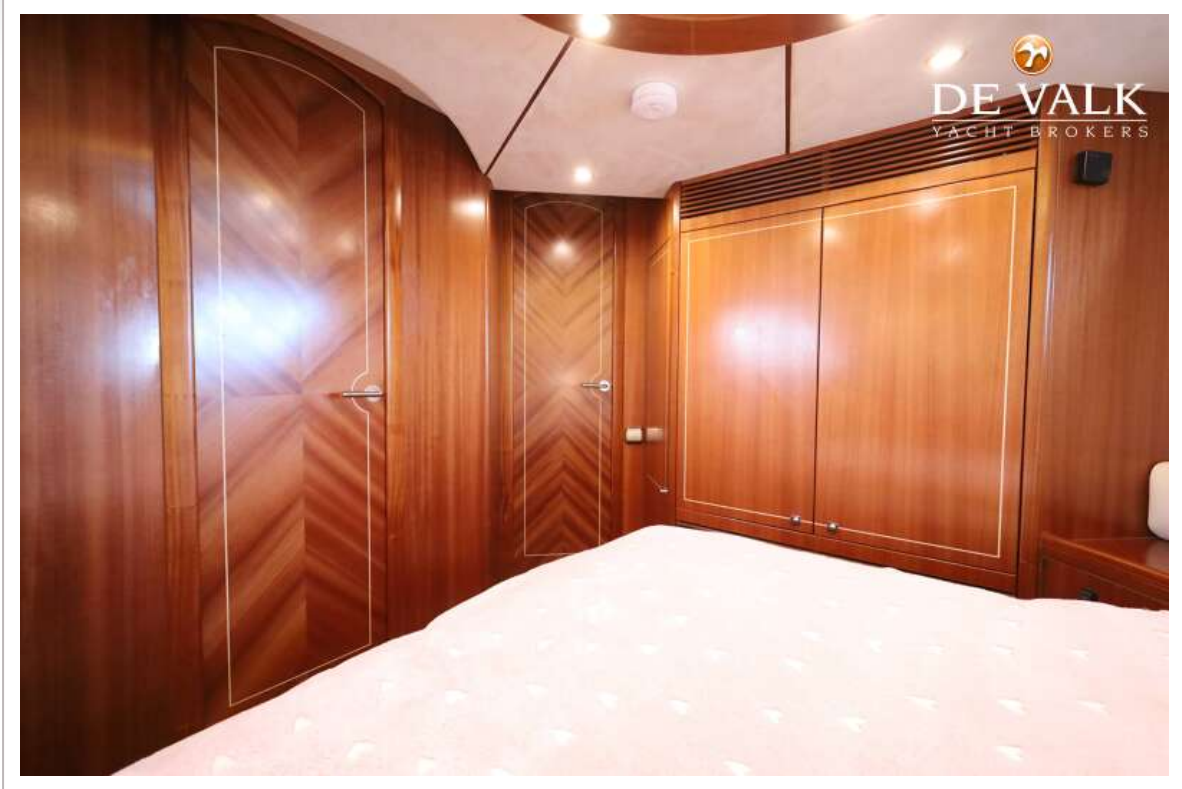
# GALEON 530 FLY



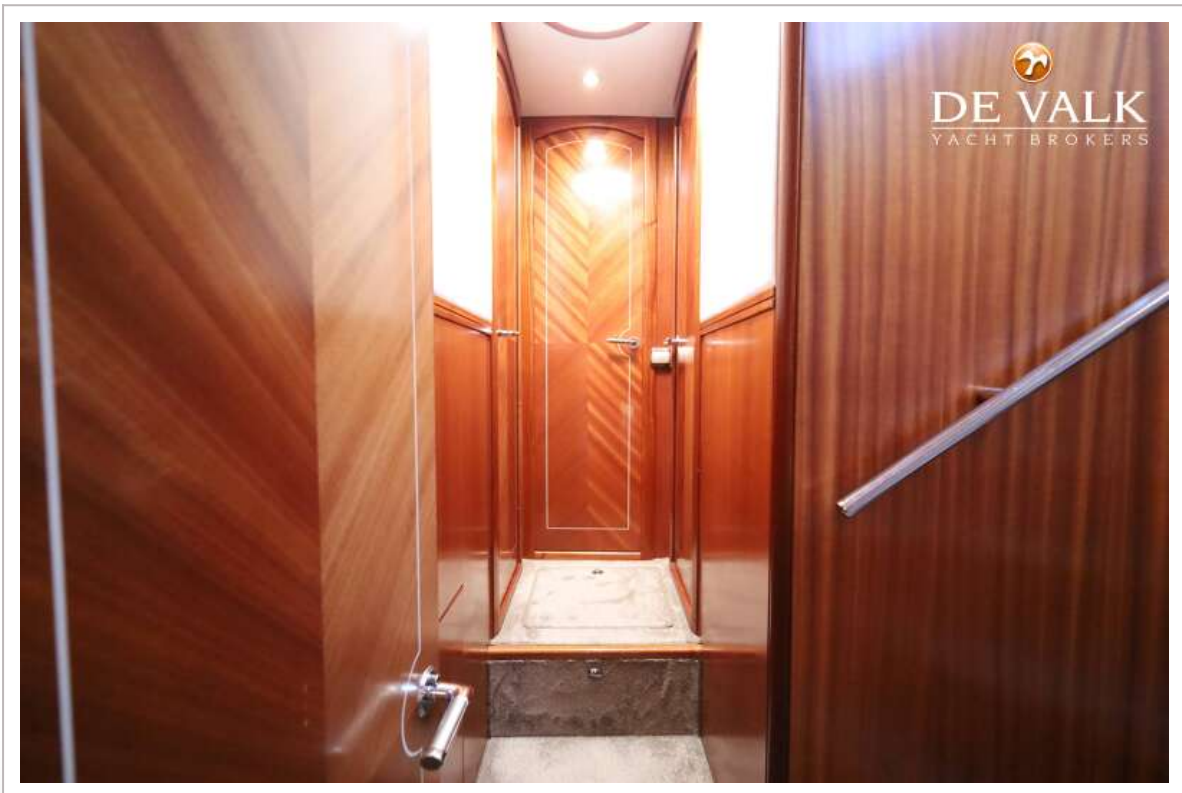
# GALEON 530 FLY



# GALEON 530 FLY



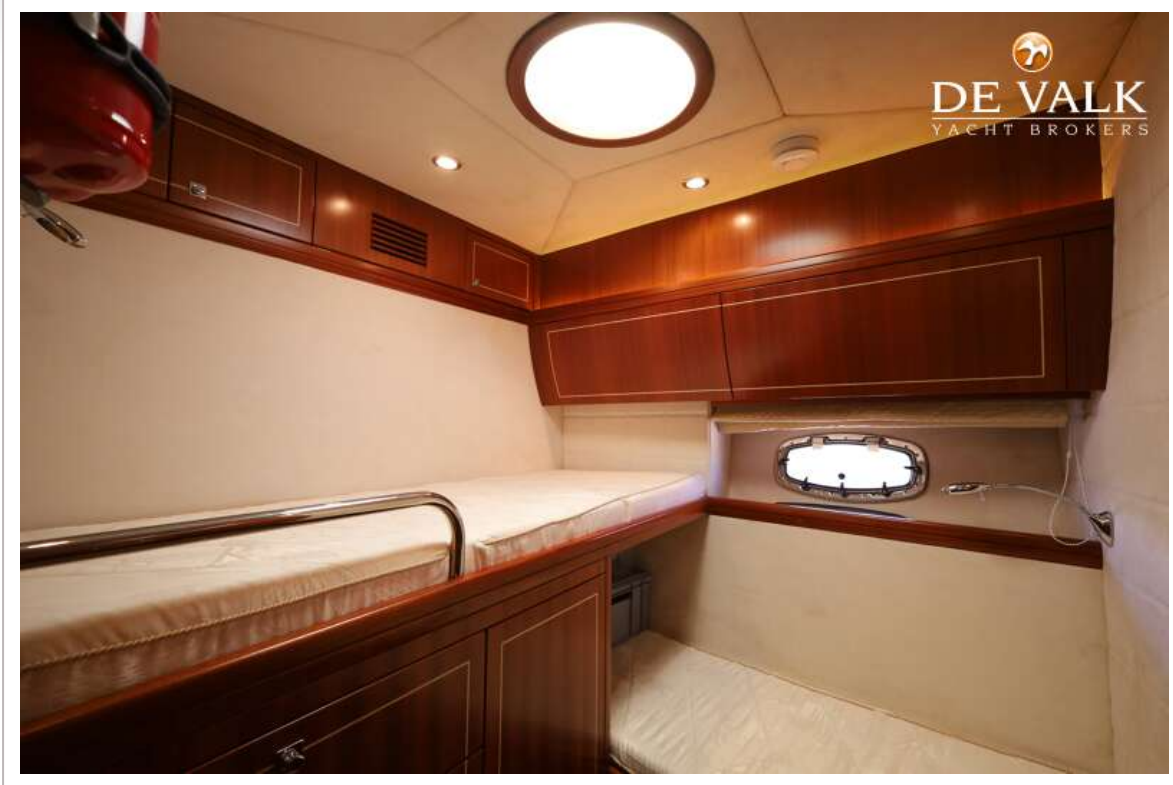
# GALEON 530 FLY



# GALEON 530 FLY



# GALEON 530 FLY



# GALEON 530 FLY

