



DE VALK
YACHT BROKERS



SAILING HOUSEBOAT 32M



DE VALK
YACHT BROKERS

SAILING HOUSEBOAT 32M

BROKER'S COMMENTS

The sailing houseboat "Sirena" is in perfect condition and offers ultimate living comfort on the water. Equipped with a strong and reliable Caterpillar diesel engine, two spud poles, two generators, central heating and a Kalkman bow thruster, this houseboat is both technically and practically well prepared for carefree sailing and living. The interior consists of a spacious saloon, three generous bedrooms and a separate toilet, making Sirena ideal as a permanent home. A unique opportunity to live comfortably and enjoy a sailing life!

Jochem Heijermans

SPECIFICATIONS

| | | | |
|---------------------|-----------------------------|----------------|---------------------------------|
| Dimensions | 32.00 x 5.09 x 1.00 (m) | Builder | |
| Built | 1911 | Cabins | 3 |
| Material | Steel | Berths | 6 |
| Engine(s) | 1 x Caterpillar 333D diesel | Hp/Kw | 180.00 (hp), 132.48 (kw) |
| Asking price | € 449.750 (VAT Exempt) | Lying | elsewhere / Not at sales office |

CONTACT

| | | | |
|---------------------|--------------------------|------------------|-------------------|
| Sales office | De Valk Belgium | Telephone | +32 586 80 218 |
| Address | 1401 PT Nieuwpoort BE | E-mail | belgium@devalk.nl |

DISCLAIMER

These particulars are given in good faith as supplied but cannot be guaranteed.



SAILING HOUSEBOAT 32M

GENERAL

| | |
|----------------------------|--|
| Model | SAILING HOUSEBOAT 32M |
| Type | motor yacht |
| LOA (m) | 32,00 |
| LWL (m) | 30,00 |
| Beam (m) | 5,09 |
| Draft (m) | 1,00 |
| Air draft (m) | 5,00 |
| Air draft min (m) | 3,25 |
| Year built | 1911 |
| Country | Belgium |
| Displacement (t) | 120 |
| Hull material | steel |
| Hull colour | purple |
| Hull thickness (mm) | 6 |
| Hull shape | flat bottom |
| Superstructure material | steel |
| Superstructure (mm) | 6 |
| Rubbing strake | steel |
| Deck material | steel |
| Deck finish | paint |
| Superstructure deck finish | paint |
| Cockpit deck finish | paint |
| Antifouling (year) | Flex Coat (2022) |
| Window frame | aluminium |
| Window material | tempered glass |
| Insulation | foam |
| Radar arch | collapsible |
| Mast can be lowered | manual |
| Fuel tank (litre) | steel 1500 (cleaned 2024) |
| Fuel tank 2 (litre) | steel 5000 (gen. heating) + 450l (red diesel) (cleaned 2024) |



SAILING HOUSEBOAT 32M

| | |
|------------------------------|---|
| Level indicator (fuel tank) | Arrow glass |
| Freshwater tank (litre) | steel 9000 |
| Level indicator (freshwater) | yes |
| Blackwater tank (litre) | stainless steel 450 |
| Blackwater tank extraction | pump |
| Wheel steering | hydraulic (2019) |
| Inside helm position | yes |
| More info on paintwork | Hull (2019) superstructure (2022) |
| Extra info | Fully sandblasted, interior and exterior (1996) |

ACCOMMODATION

| | |
|--------------------------|--------------------------------|
| Cabins | 3 |
| Berths | 6 |
| Floor | carpet |
| Aft deck | yes |
| Saloon | yes |
| Headroom saloon (m) | 2,00 |
| Heating | central heating Kabola |
| Heating 2 | stove diesel Kabola |
| Air-conditioning | single cycle airco |
| Dinette | yes |
| Opening door to aft deck | yes |
| Galley | yes |
| Countertop | granite |
| Sink | stainless steel |
| Cooker | ceramic Scholtes |
| Oven | Siemens |
| Extractor | AEG |
| Fridge | Bosch |
| Freezer | Bosch |
| Hot water system | (1x 10l 380V) + (1x 120l 380V) |



SAILING HOUSEBOAT 32M

| | |
|-----------------------|---------------------|
| Water pressure system | electrical |
| Owners cabin | double bed |
| Bed length (m) | 2.20 x 1.40 |
| Wardrobe | hanging and shelves |
| Bathroom | shared |
| Toilet | separate |
| Wash basin | in the bathroom |
| Bath tub | shared With shower |
| Guest cabin 1 | French bed |
| Bed length (m) | 2.00 x 1.40 |
| Wardrobe | hanging and shelves |
| Guest cabin 2 | French bed |
| Bed length (m) | 2.00 x 1.40 |
| Wardrobe | hanging and shelves |
| Washing machine | Bosch |
| Dryer | Beko |

MACHINERY

| | |
|-----------------------|--------------------|
| No of engines | 1 |
| Make | Caterpillar |
| Type | 333D |
| HP | 180 |
| kW | 132.48 |
| Fuel | diesel |
| Year installed | 1995 |
| Maximum speed (kn) | 7 |
| Cruising speed (kn) | 6 |
| Consumption (l/hr) | 6 |
| Engine hours | 6000 |
| Engine cooling system | closed keelcooling |
| Drive | shaft |



SAILING HOUSEBOAT 32M

| | |
|--------------------------|--|
| Engine controls | bowden cable |
| Gearbox | hydraulic |
| Bowthruster | water jet Deutz 111hp (2024) Kalkman 360 graden roterend |
| Propeller blades | 5 |
| Propeller shaft material | stainless steel |
| Shaft lubrication | grease |
| Electric bilge pump | 3x |
| Bilge alarm | yes |
| Electrical installation | 24V-220V-380V |
| Generator | dry exhaust Deutz 15Kva (2018) |
| Running hours generator | 1300 |
| Generator 2 | Lister 17Kva |
| Batteries | yes |
| Service battery | 24V/1000Ah (03/18) |
| Generator battery | yes |
| Battery monitor | yes |
| Battery charger | Victron 24V/80Ah |
| Inverter | Victron 24V/3000W + 24V/1000W |
| Solar panel | 3x 330W |
| Shorepower | with cable |

NAVIGATION

| | |
|------------------------|-----------|
| Windset | Vetus |
| VHF | 2x Sailor |
| Rudder angle indicator | yes |
| Plotter/GPS | PC Navigo |
| AIS transceiver | yes |
| Navigation lights | yes |
| Searchlight | yes |

EQUIPMENT



SAILING HOUSEBOAT 32M

| | |
|----------------------------|------------|
| Fixed windscreen | yes |
| Bimini | yes |
| Anchor | yes |
| Windlass | electrical |
| Deck wash | yes |
| Davits | steel |
| Davits controls | manual |
| Grab rail (superstructure) | steel |
| Lifejackets | yes |
| Wiper | yes |
| Horn | yes |
| Fire extinguisher | yes |
| Latest extinguisher survey | (06/2024) |



SAILING HOUSEBOAT 32M



SAILING HOUSEBOAT 32M



SAILING HOUSEBOAT 32M



SAILING HOUSEBOAT 32M



SAILING HOUSEBOAT 32M



SAILING HOUSEBOAT 32M



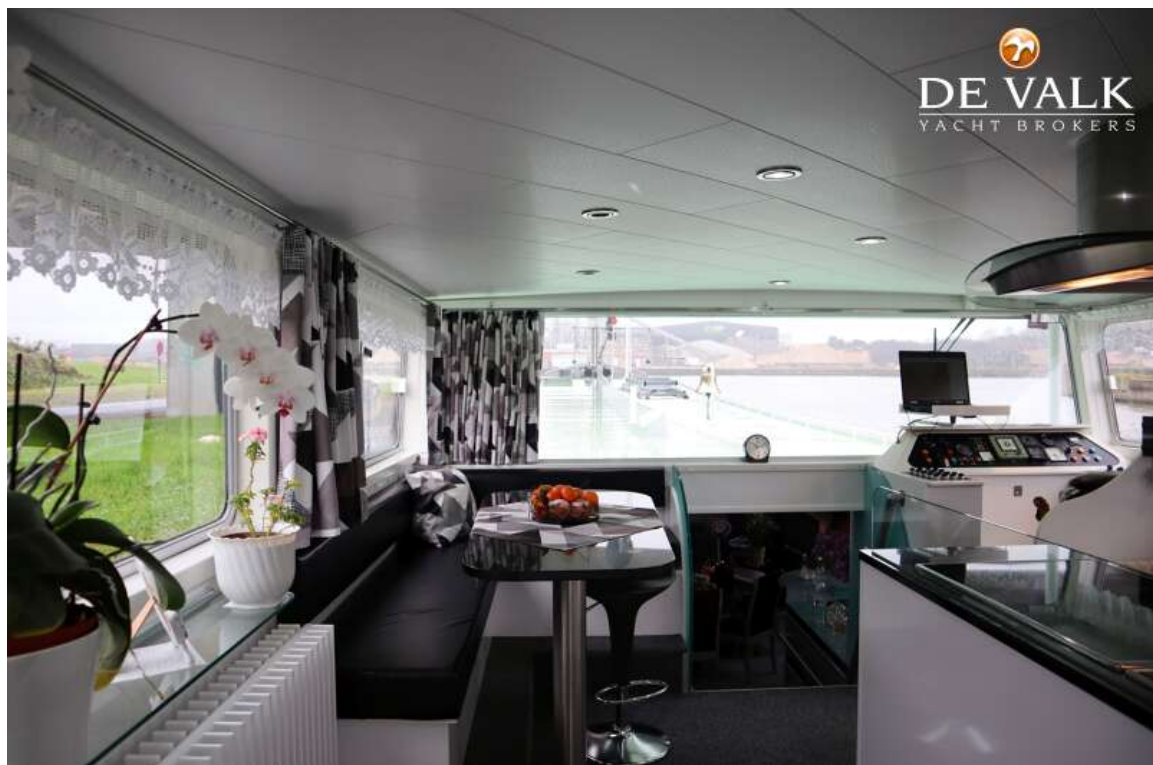
SAILING HOUSEBOAT 32M



SAILING HOUSEBOAT 32M



SAILING HOUSEBOAT 32M



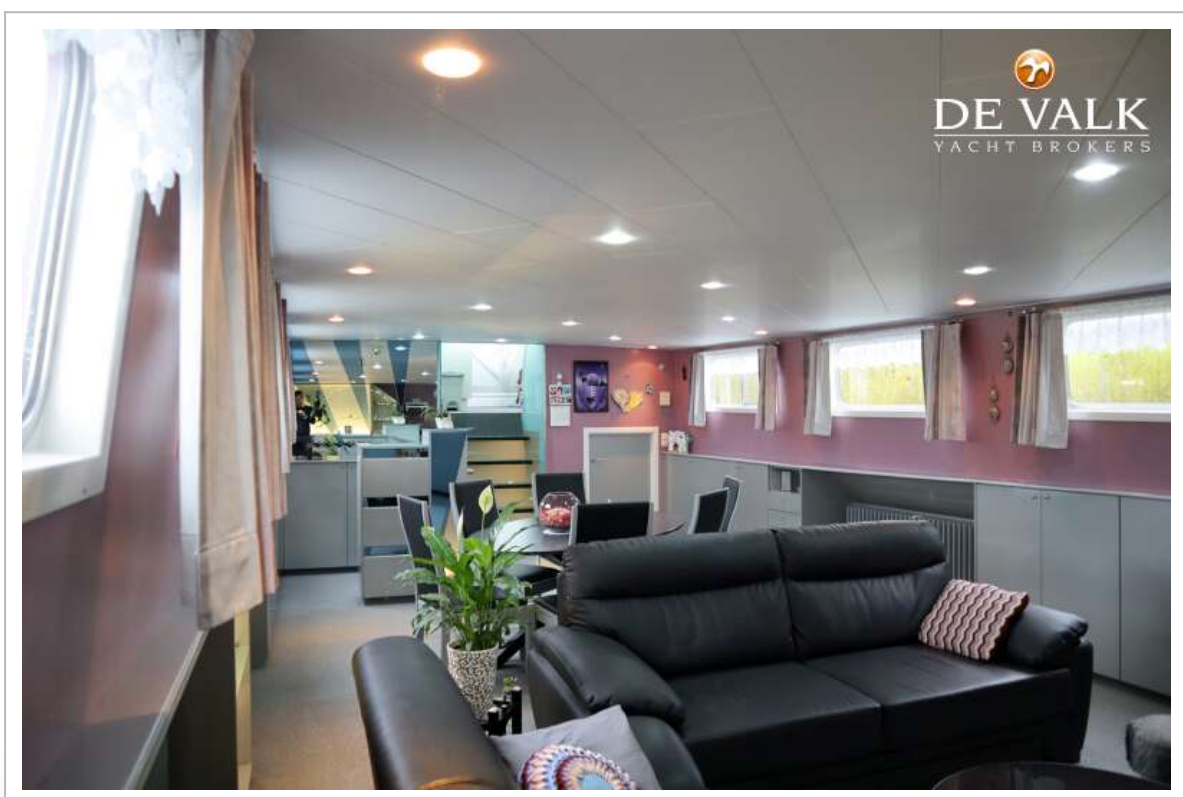
SAILING HOUSEBOAT 32M



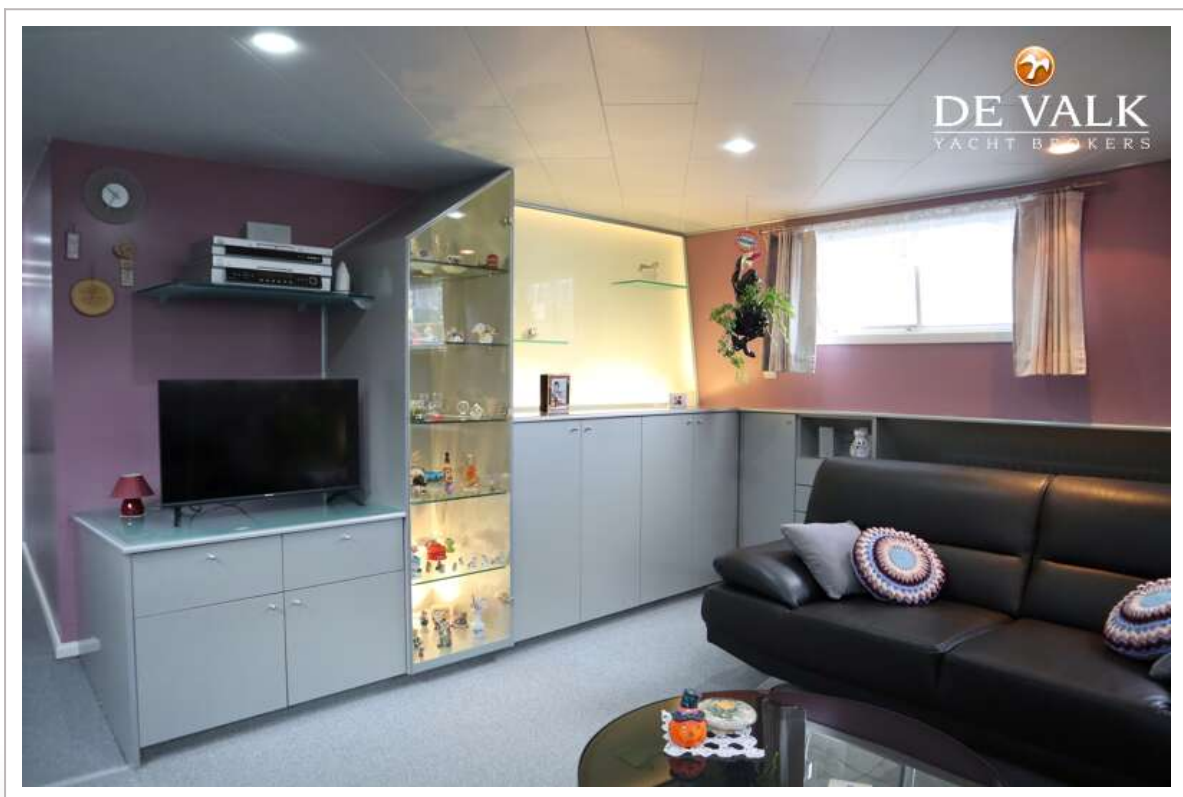
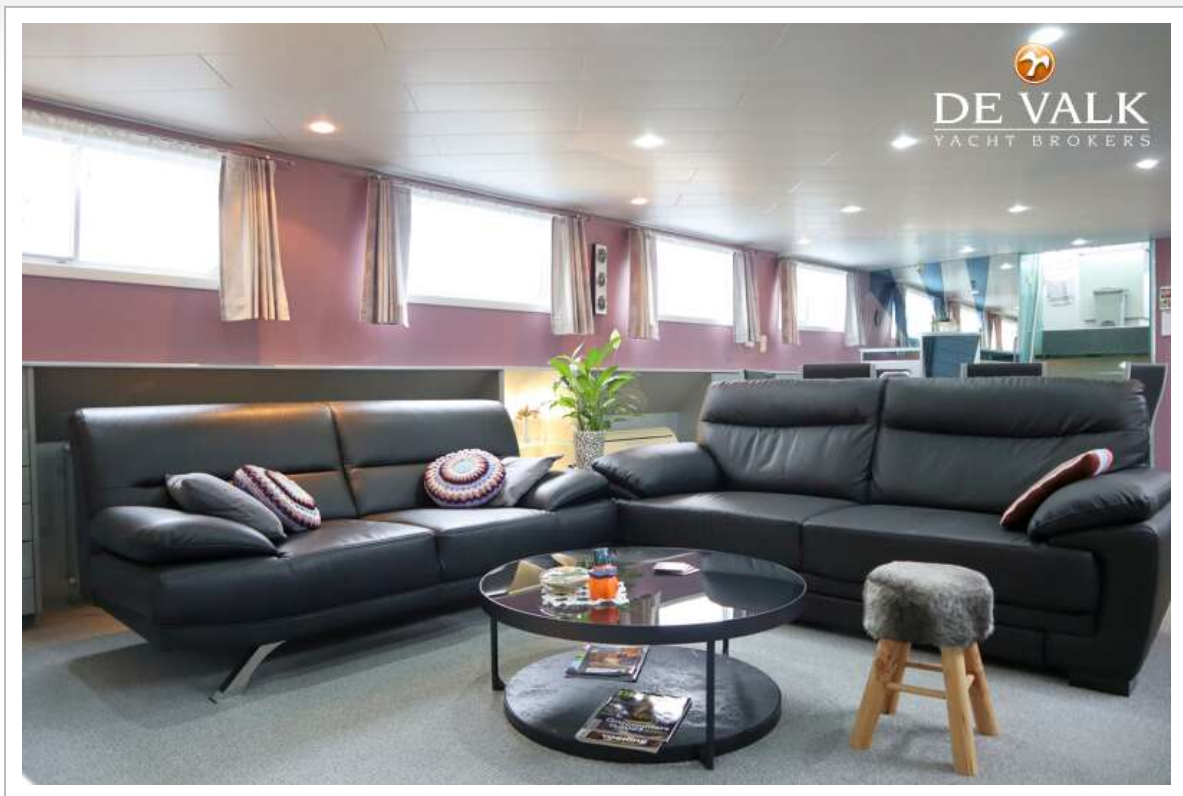
SAILING HOUSEBOAT 32M



SAILING HOUSEBOAT 32M



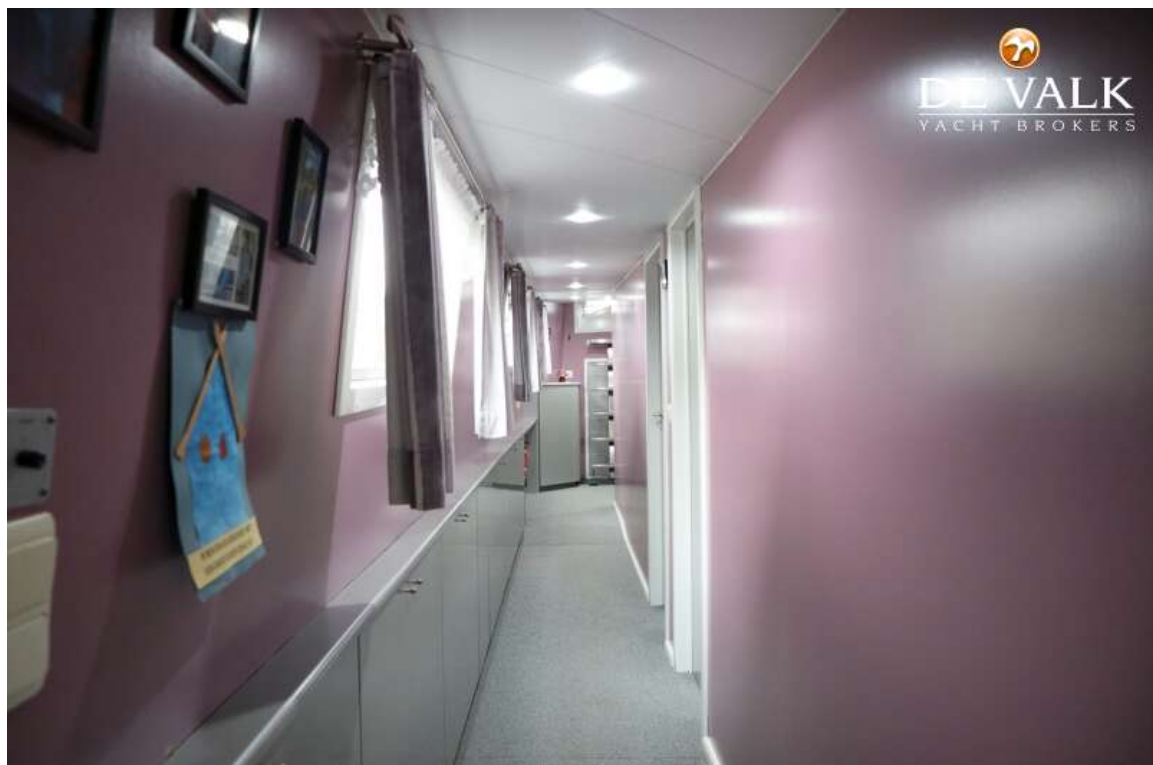
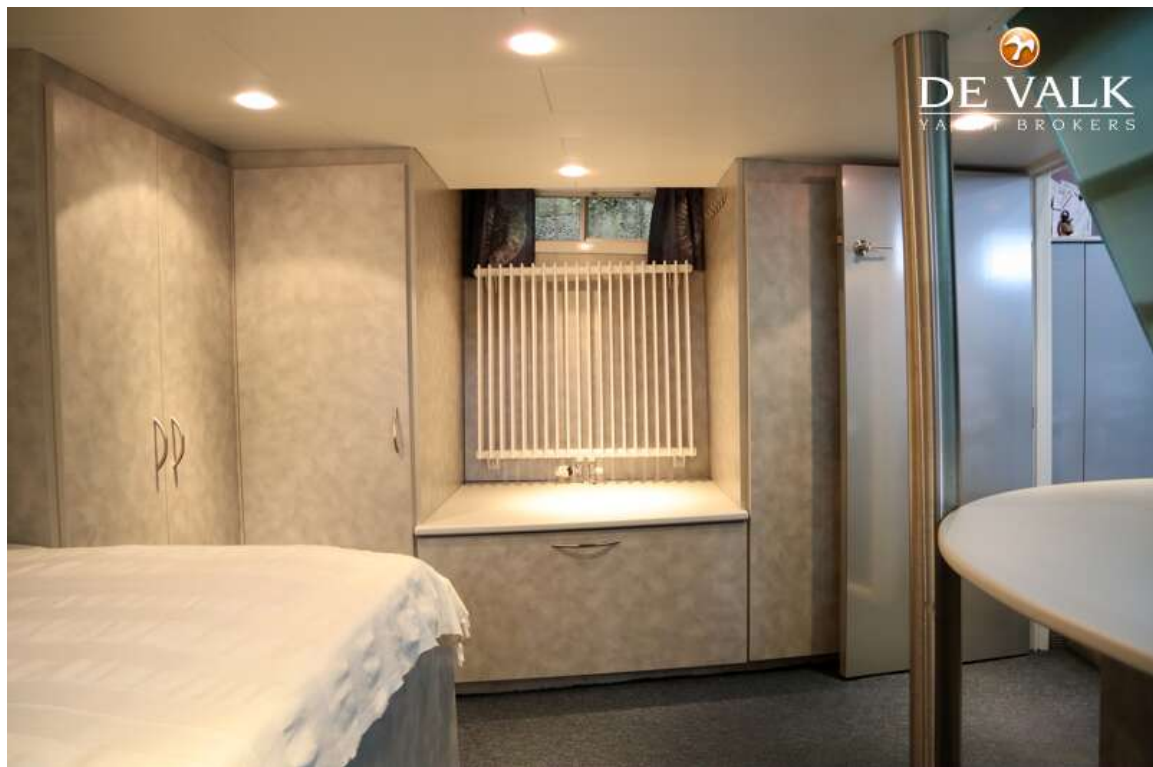
SAILING HOUSEBOAT 32M



SAILING HOUSEBOAT 32M



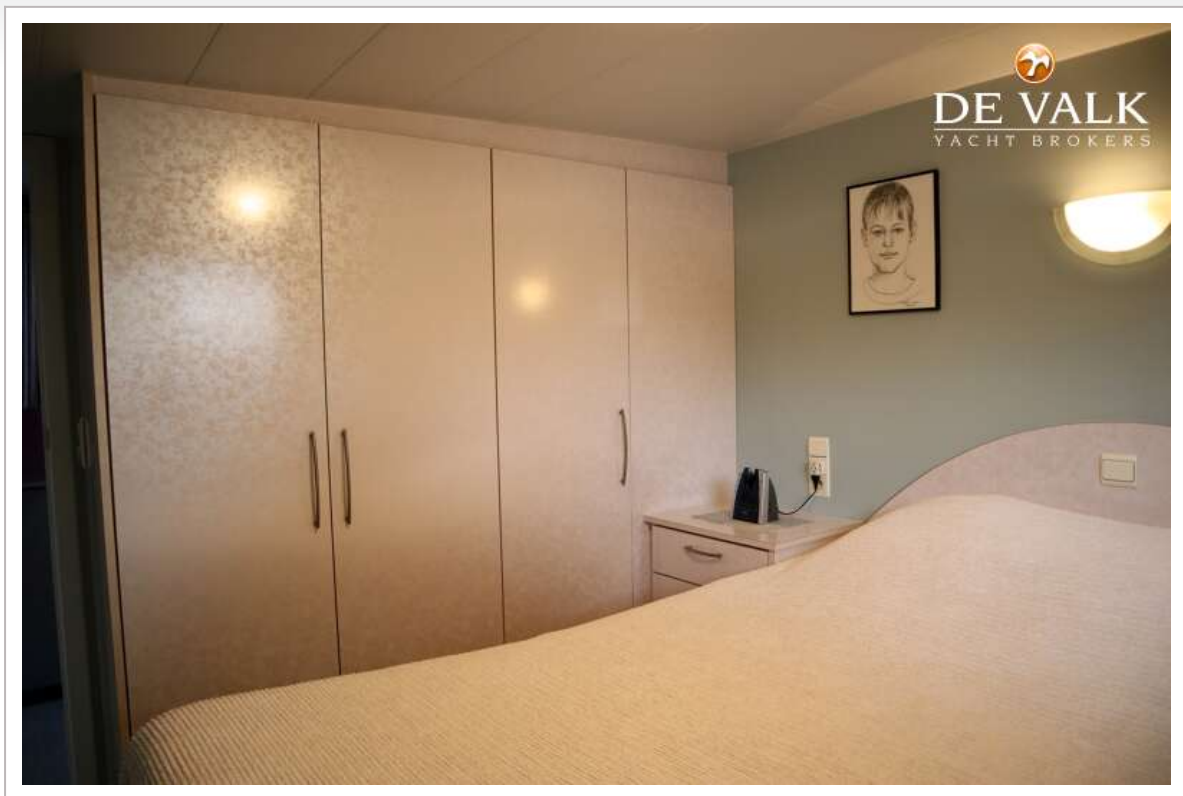
SAILING HOUSEBOAT 32M



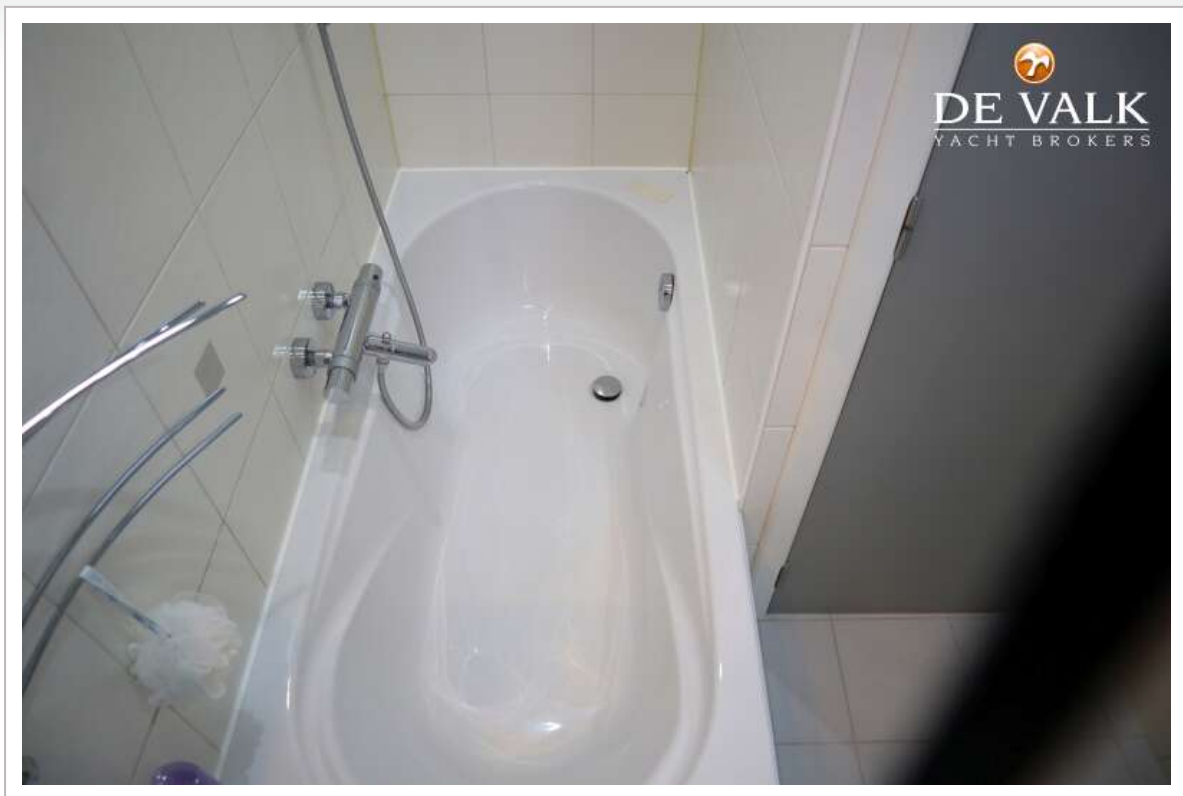
SAILING HOUSEBOAT 32M



SAILING HOUSEBOAT 32M



SAILING HOUSEBOAT 32M



SAILING HOUSEBOAT 32M



SAILING HOUSEBOAT 32M

