



DE VALK
YACHT BROKERS



HANSE 575



DE VALK
YACHT BROKERS

BROKERAGE | CHARTER | BERTHS | FINANCE | INSURANCE | YACHT MANAGEMENT

BROKER'S COMMENTS

Beautiful and excellent maintained Hanse 575 3-cabin version. As the engine and generator hours show, she has only been lightly cruising used. As a result, she hardly shows any signs of use! This yacht is packed with fine extras and innovations. Upgraded 150 Hp engine, Hanse easy tender system, electric tables in- and outside, almost new sails, recent Highfield tender and outboard, etc. The owner is a captain on large cruise vessels and as a pleasant bonus for you, with his experience he kept the ship in a very tight maintenance schedule. Highly recommended yacht!

Willem Koopmans

SPECIFICATIONS

Dimensions	16.70 x 5.20 x 2.85 (m)	Builder	Hanse Yachts AG
Built	2014	Cabins	3
Material	GRP	Berths	9
Engine(s)	1 x Volvo Penta D3-150 diesel	Hp/Kw	150.00 (hp), 110.40 (kw)
Asking price	€ 459.000 (VAT Paid)	Lying	contact sales office

CONTACT

Sales office	De Valk Costa Blanca	Telephone	+34 96 50 21 569
Address	Costa Blanca Region 03730 Javea Alicante ES	E-mail	costablanca@devalk.nl

DISCLAIMER

These particulars are given in good faith as supplied but cannot be guaranteed.



GENERAL

Model	HANSE 575
Type	sailing yacht
LOA (m)	16,70
LWL (m)	15,15
Beam (m)	5,20
Draft (m)	2,85
Air draft (m)	25,50
Headroom (m)	2,10
Year built	2014
Builder	Hanse Yachts AG
Country	Germany
Designer	Judel/Vrolijk & Co
Displacement (t)	19,5
Ballast (tonnes)	cast iron 5,9
CE norm	A
Hull material	GRP
Hull colour	off-white
Hull shape	round-bilged
Keel type	fin keel
Bilge keels	yes
Superstructure material	GRP
Deck material	GRP
Deck finish	teak
Superstructure deck finish	teak
Cockpit deck finish	teak
Antifouling (year)	October 2024
Window material	polycarbonate
Fuel tank (litre)	polyethylene 540, 2 tanks
Level indicator (fuel tank)	yes
Freshwater tank (litre)	polyethylene 770



Level indicator (freshwater)	yes
Blackwater tank (litre)	polyethylene At each head
Level indicator (blackwater)	yes
Wheel steering	mechanical Double Y spoke 100 cm wheels with dark grey covers
Outside helm position	Double
Emergency tiller	yes
More info on hull	Polished April 2024
Extra info	Immaculate condition
Extra info	6x flush rope clamps on deck

ACCOMMODATION

Cabins	3
Berths	9
Crew cabin	In usage as storage
Crew berths	1
Interior	cherry American
Layout	2 aft cabins, owner in front plus crew at bow
Floor	teak and holly
Open cockpit	yes
Saloon	Dimmers for light in salon, mosquito and blinds
Headroom saloon (m)	2,10
Air-conditioning	4 units 32000 BTU
Navigation center	yes
Aft Cabin	2x aft cabin with double bed
Dinette	yes
Galley	yes
Countertop	corian Black
Sink	stainless steel Double
Cooker	calor gas Eno stainless steel, 3 burner
Oven	calor gas Eno



Microwave	yes
Fridge	2x
Freezer	Front door opening
Hot water system	220V + engine Boiler
Water pressure system	electrical
Owners cabin	French bed In front
Bed length (m)	2,10 with De Luxe mattress option
Wardrobe	hanging/drawers/shelves
Bathroom	en suite
Toilet	en suite
Toilet system	electric Jabsco new 2022
Wash basin	in the bathroom
Shower	en suite
Guest cabin 1	double bed Starboard side
Bed length (m)	2,10 with De Luxe mattress option
Wardrobe	hanging and shelves
Bathroom	en suite
Toilet	en suite
Toilet system	electric Jabsco new 2022
Wash basin	in the bathroom
Shower	en suite
Guest cabin 2	double bed Portside
Bed length (m)	2,10 with De Luxe mattress option
Wardrobe	hanging and shelves
Bathroom	en suite
Toilet	en suite
Toilet system	electric Jabsco new 2022
Wash basin	in the bathroom
Shower	en suite
Crew cabin(s)	1x, in bow
Toilet (crew)	Prepared
Washing machine/dryer combi	Miele with front opening



Tender garage	Smart tender system installed with electrical winch
Extra info	Indirect lights, overall led lights
Extra info	Salon table electric retractable, for double bed

MACHINERY

No of engines	1
Make	Volvo Penta
Type	D3-150
HP	150
kW	110.40
Fuel	diesel
Year installed	2014
Maximum speed (kn)	9,45
Cruising speed (kn)	7
Consumption (l/hr)	4
Range (nm)	900
Engine hours	1630 ca.
Engine cooling system	freshwater heat exchanger
Drive	shaft
Engine controls	electrical
Bowthruster	electric 24 Volt retractable
Sternthruster	24 Volt retractable
Exhaust	watercooled
Propeller type	folding
Propeller blades	4
Propeller shaft material	stainless steel
Shaft lubrication	water
Manual bilge pump	yes
Electric bilge pump	yes
Bilge alarm	yes
Electrical installation	12/24/228



Generator	Fischer Panda 10000i 8 kW
Running hours generator	220
Start battery	12 Volt 90 Ah new 2022
Service battery	6x 12 Volt AGM 130 Ah new 2023
Generator battery	New 2022
Bowthruster battery	24 Volt new 2022
Sternthruster battery	24 Volt new 2022 (combined)
Battery monitor	Victron
Battery charger/inverter	12/2500/100
Solar panel	2x flexible, 100 Watt each
Shorepower	Double 32 Amp connection for airco purpose
Extra info	Victron battery protection system
Extra info	12 & 228 Volt sockets in all cabins

NAVIGATION

Compass	2x, at each steering wheel
Electric compass	On pilot
Multi control display	4x B&G Triton
Depth sounder	B&G Triton
Log	B&G Triton
Windset	B&G Triton
VHF	B&G V50
Autopilot	B&G
Rudder angle indicator	On pilot
Radar	B&G 3G broadband
GPS	yes
Radar/GPS/plotter	2x B&G 12 inch touch, + engine data on display
AIS transponder	B&G Class B transponder
EPIRB	yes
Navigation lights	yes



EQUIPMENT

Sprayhood with grab rail	Dark grey
Bimini	Dark grey
Cockpit cushions	Yes plus sunbed cushions on top roof
Cockpit table	2x electric retractable cockpit table to convert into sun beds
Bathing platform	yes
Boarding ladder	yes
Transom door	Hydraulic operation
Gangway	Folding gangway
Deck shower	Transom hot/cold
Anchor	Delta 40 kg
Anchor chain	70 mtr 10 mm G43 quality galvanised, new 2023
Windlass	yes
Dinghy	Highfield, new 2021, with foldable transom
Outboard	Yamaha 9.9, new 2023, fits on tender in garage
Outboard support	yes
Davits	See Smart Tender System from Hanse
Railing side opening gates	2x
Life raft	container ORC valid until 2027
Life raft (pers)	6
Last life raft survey	2024
Lifejackets	yes
Rope cutter	yes
Radar reflector	2x
Fenders	yes
Mooring lines	2x 8mtr, 4x 15mtr, 1x 20 mtr new 4x shock absorbers
Spare parts	yes
TV	On electrical lift in salon
Radio-cd player	Fusion MS AV700I bluetooth
DVD player	In AV700I
iPod connection	Docking station Fusion



Cockpit speakers	Fusion MS-NRX200 remote control
Speakers in salon	yes
Fire extinguisher	6x ABC Powder
Latest extinguisher survey	All "green/good" insurance necessary needed are in service data
Extinguisher in engine room	1x CO2
Auto extinguisher system	For engine room
Extra info	Grab bag with safety gear
Extra info	Dual sub, remote compressor for dinghy
Extra info	Owner is captain cruise vessels understands maintenance required

RIGGING

Rigging	fractional
Standing rigging	wire
Brand mast	Seldén
Material mast	aluminium
Spreaders	3 plus lights installed at first spreader and foredeck lightning
Mainsail cover	Lazy bag in dark grey
Battcars	yes
Fully battened mainsail	Elvstrom Dacron with triple reef, new 2023
Jib	Self tacking Elvstrom Dacron with UV strip, new 2023
Genoa furler	yes
Gennaker	Almost new
Self tacking jib installation	yes
Reefing System	3 reefs
Backstay adjuster	Hydraulic
Boomvang	Rigid
Primary sheet winch	2x Lewmar 65 STE EVO electric winches
Genoa sheetwinches	2x Lewmar
Extra info	Selden MDS sliding system
Extra info	All halyards to cockpit, main halyard doubled Dyneema



HANSE 575



HANSE 575







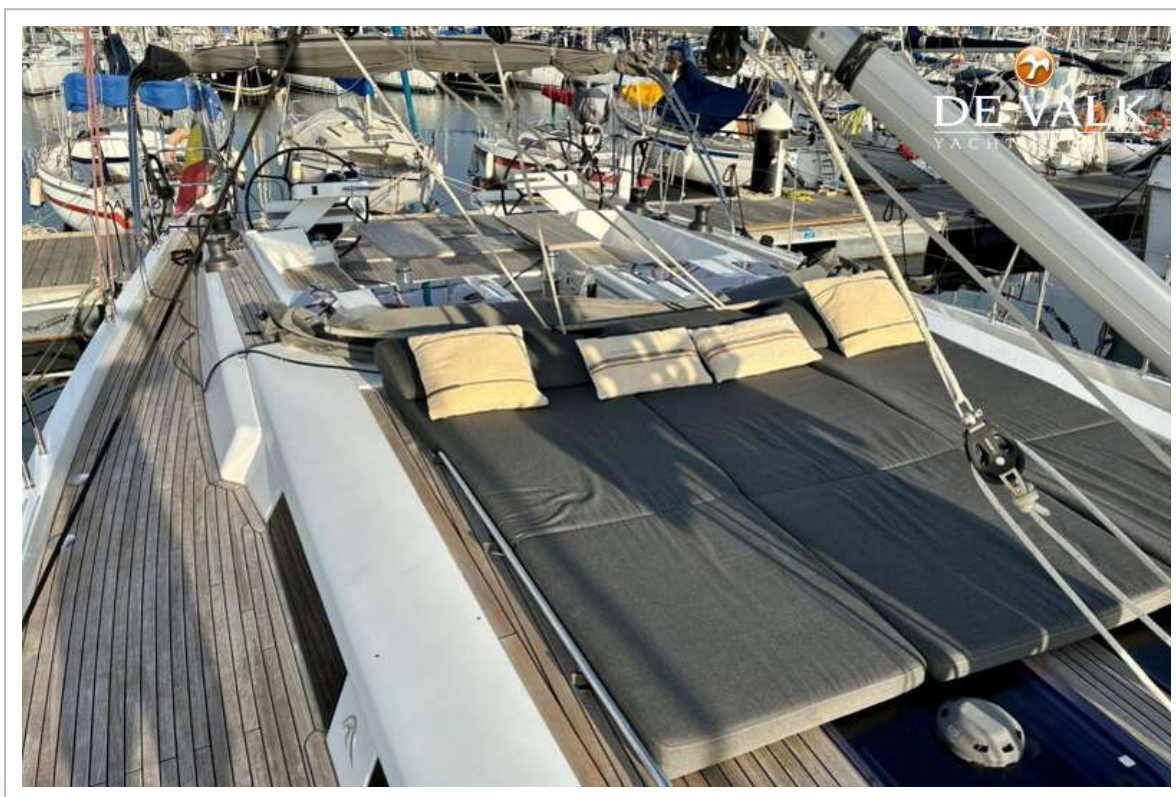
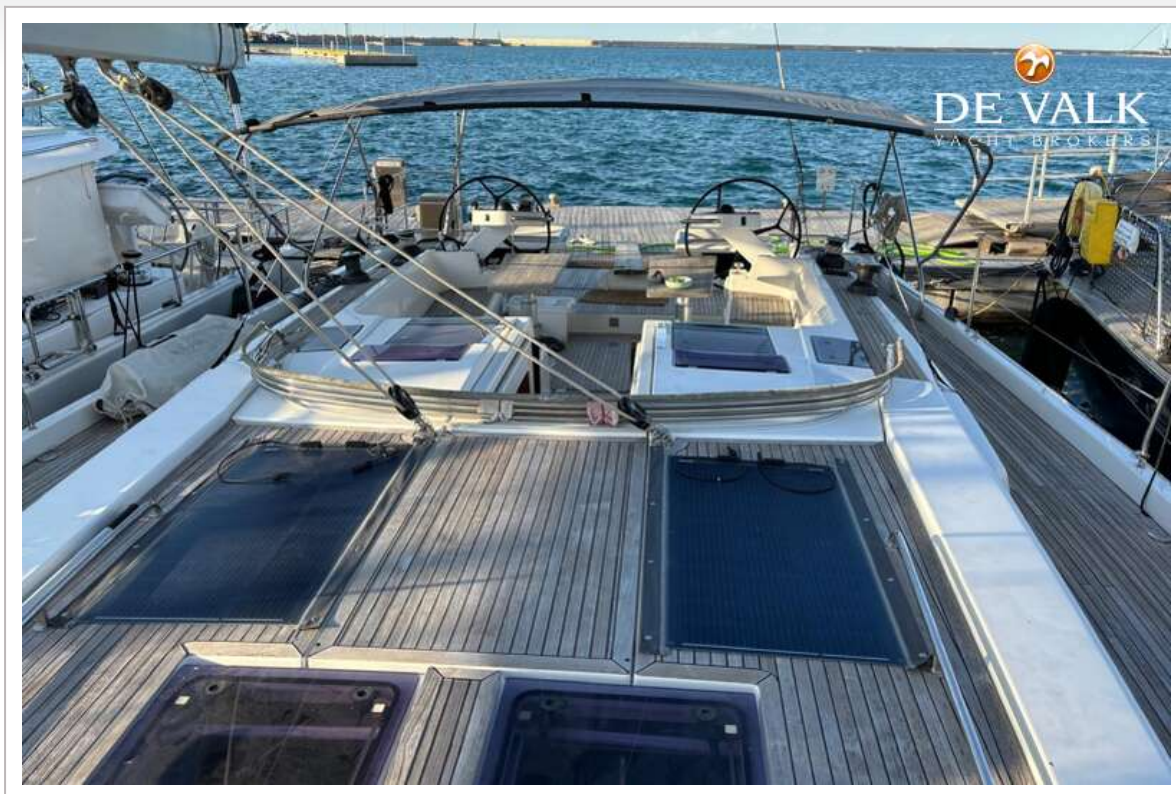
HANSE 575



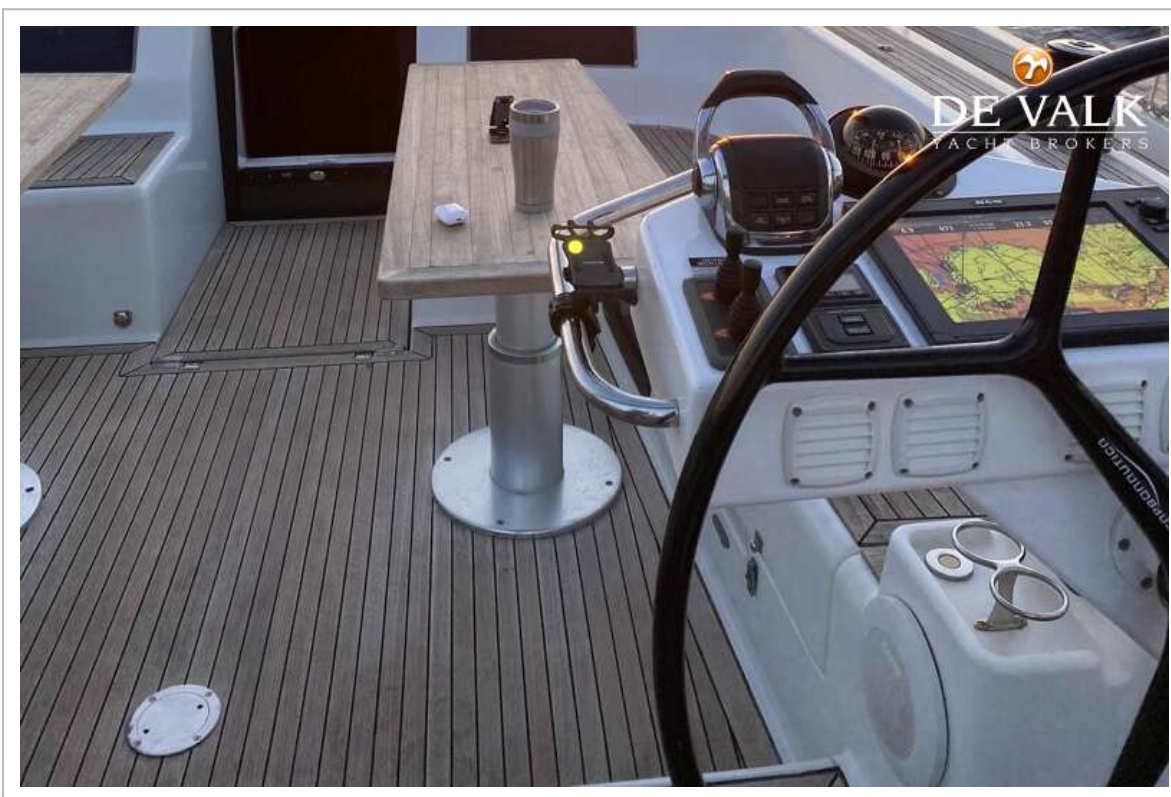
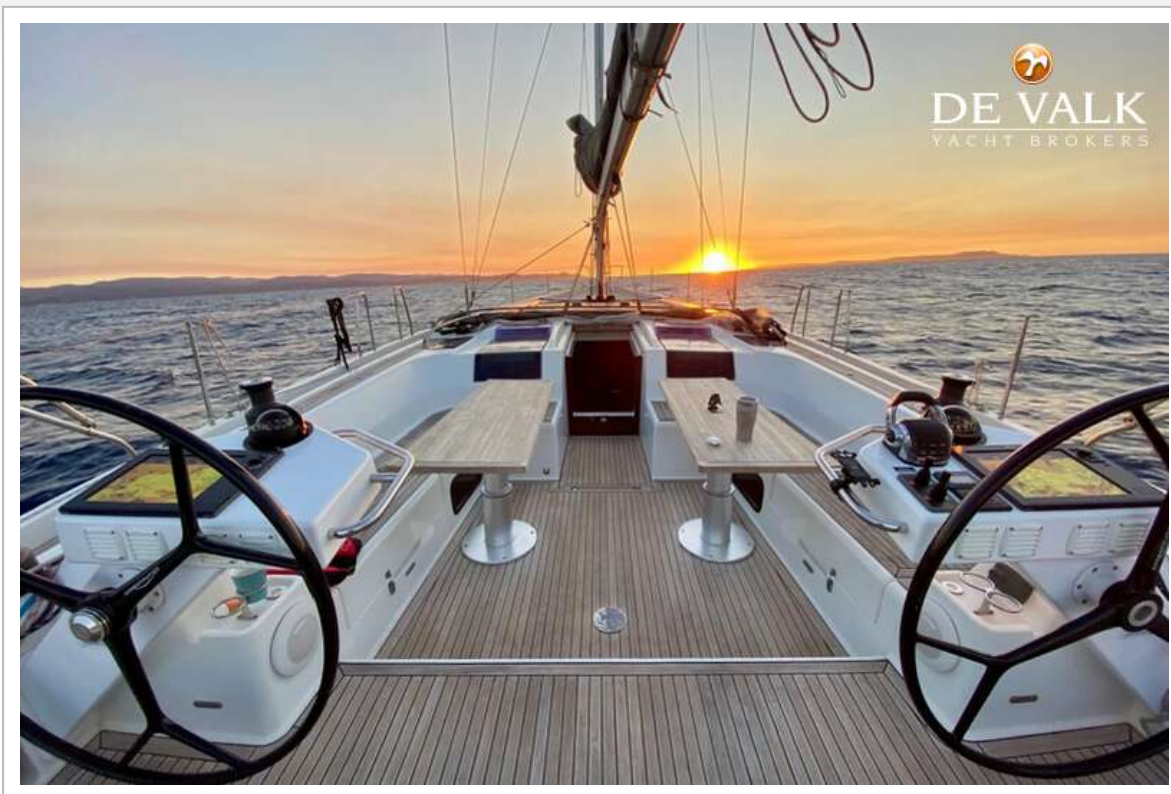
HANSE 575



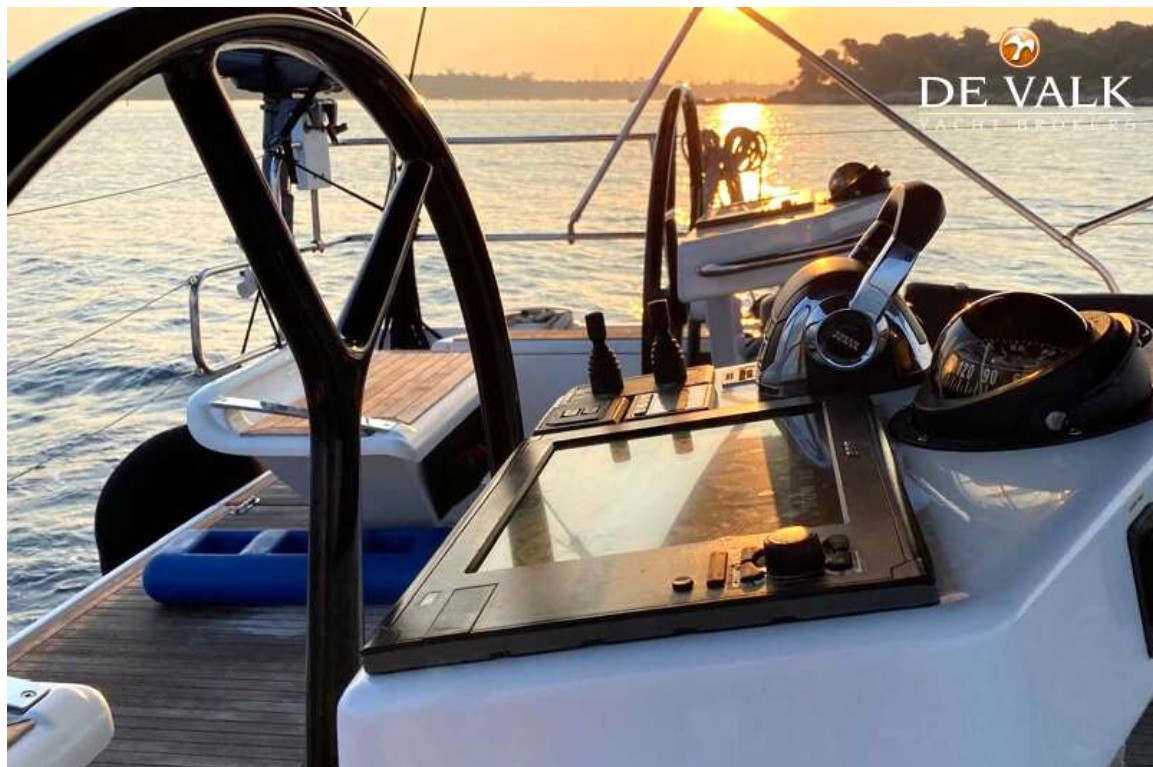
HANSE 575



HANSE 575



HANSE 575



HANSE 575



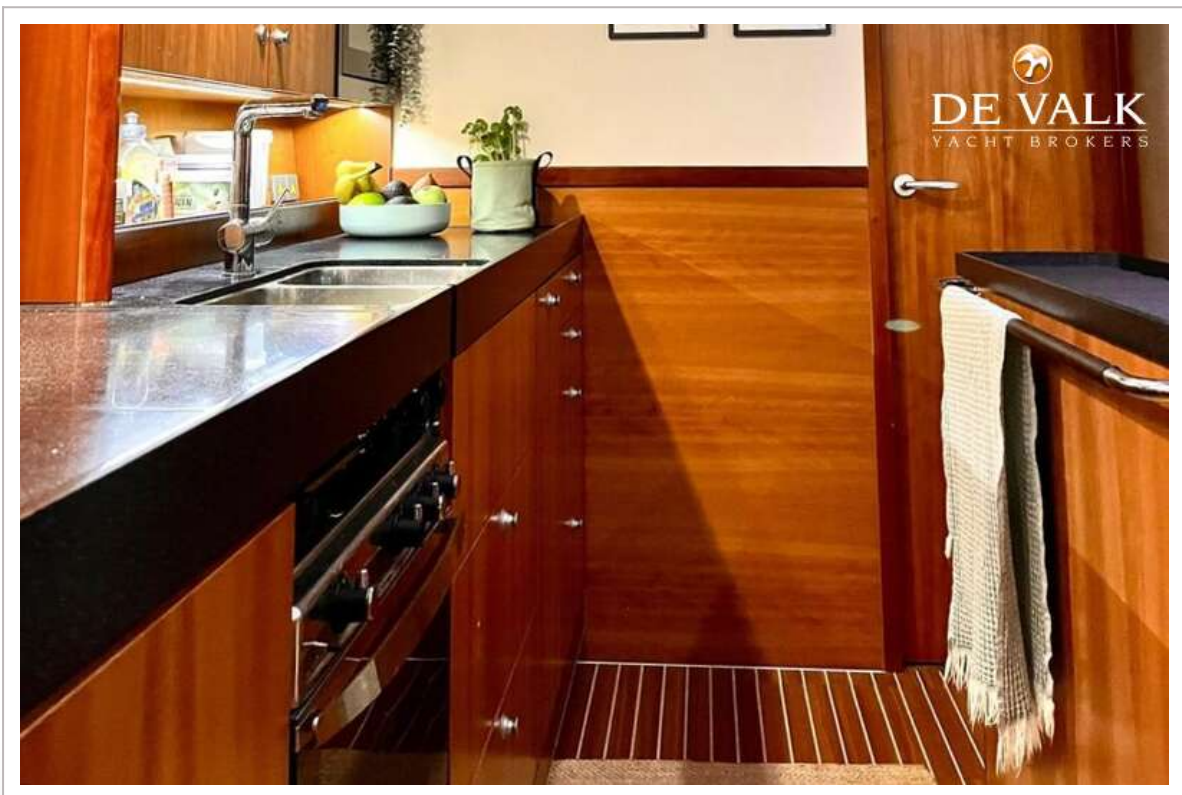
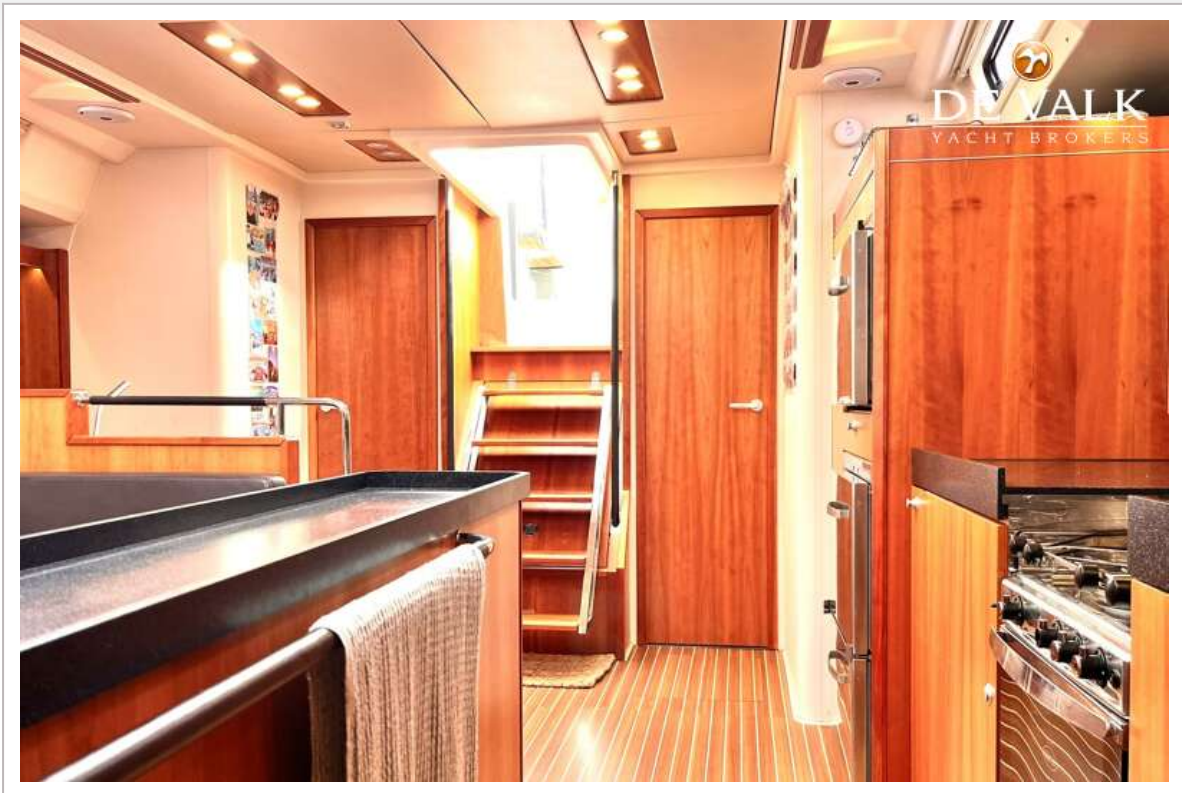
HANSE 575



HANSE 575

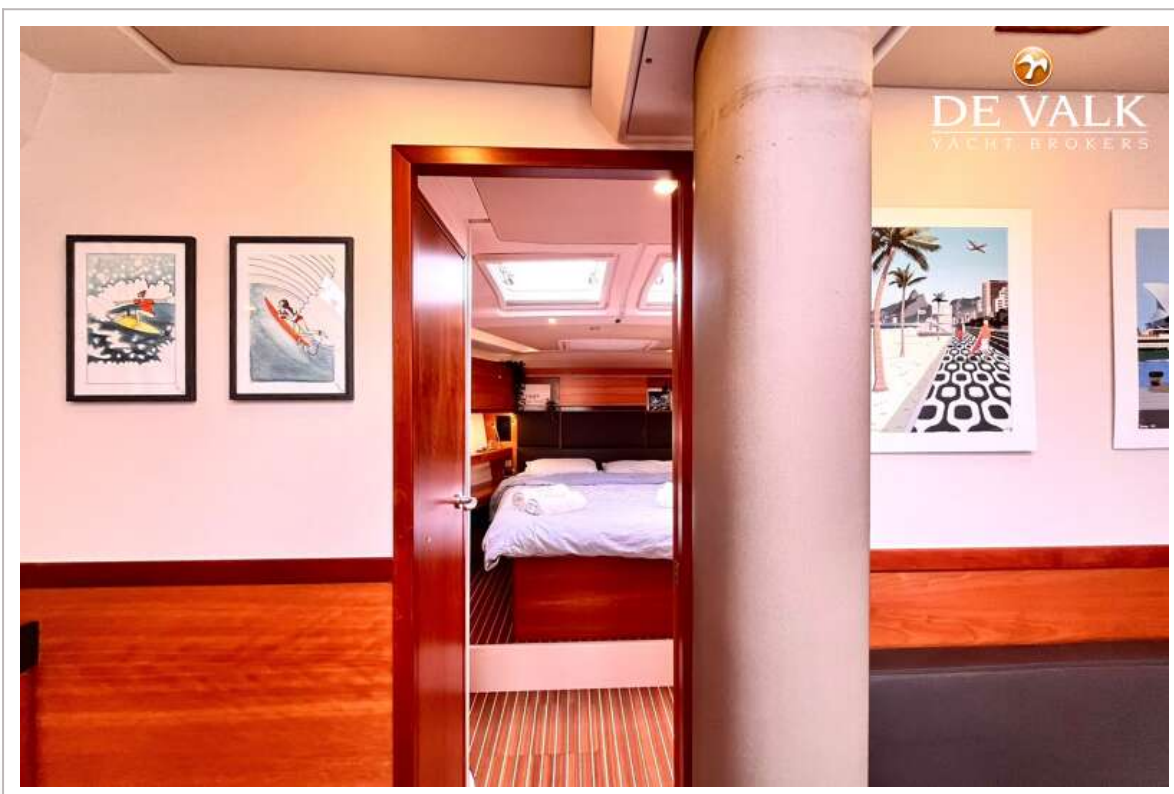


HANSE 575

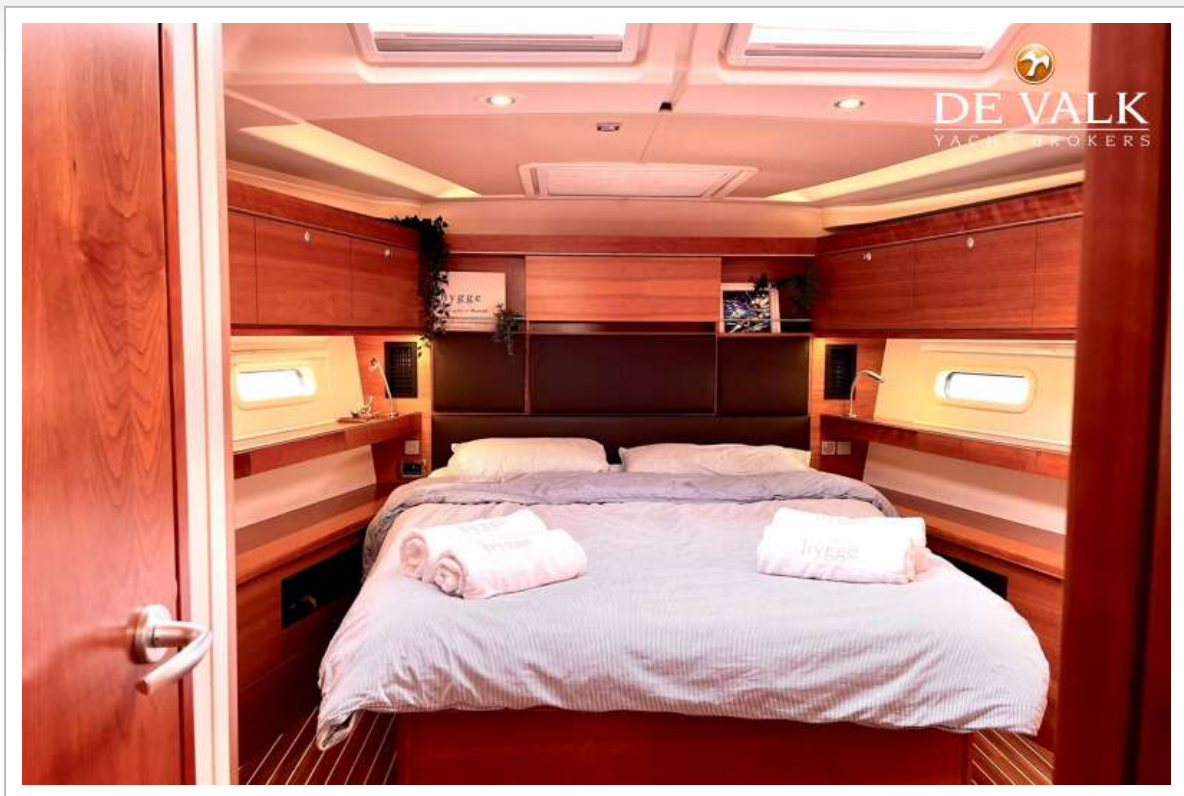




HANSE 575



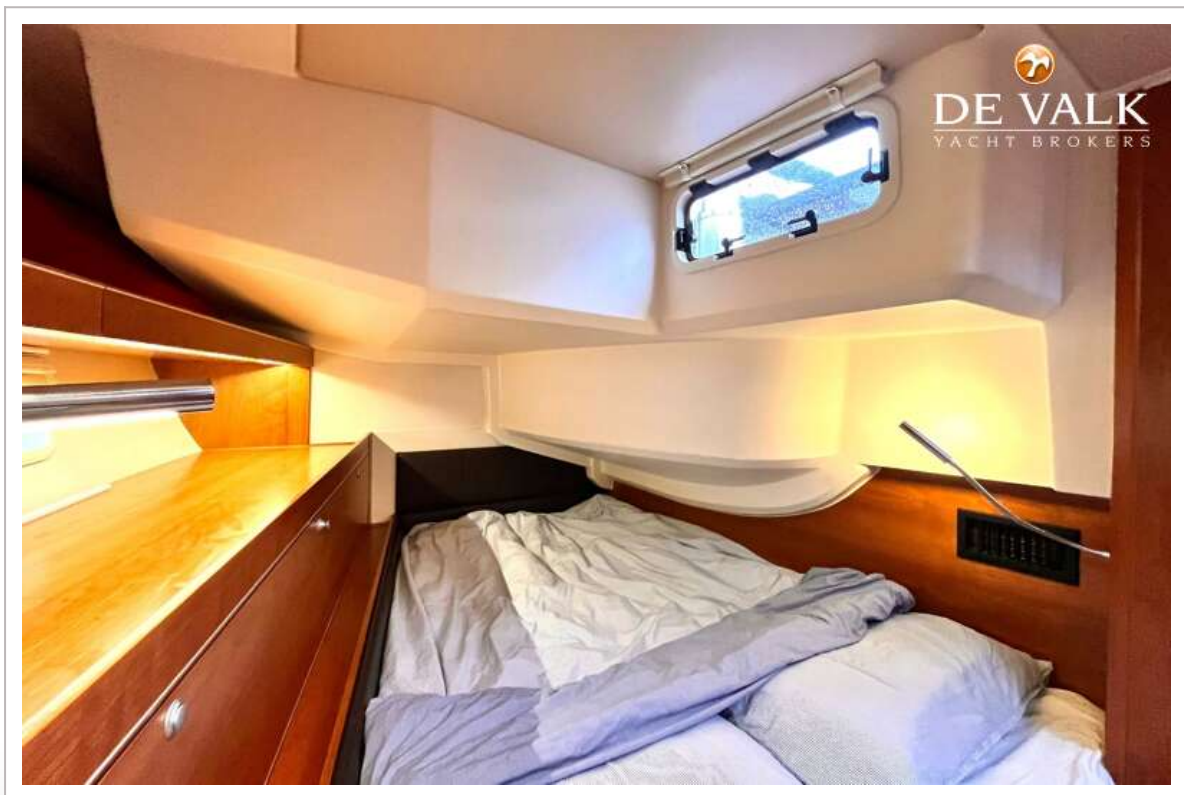
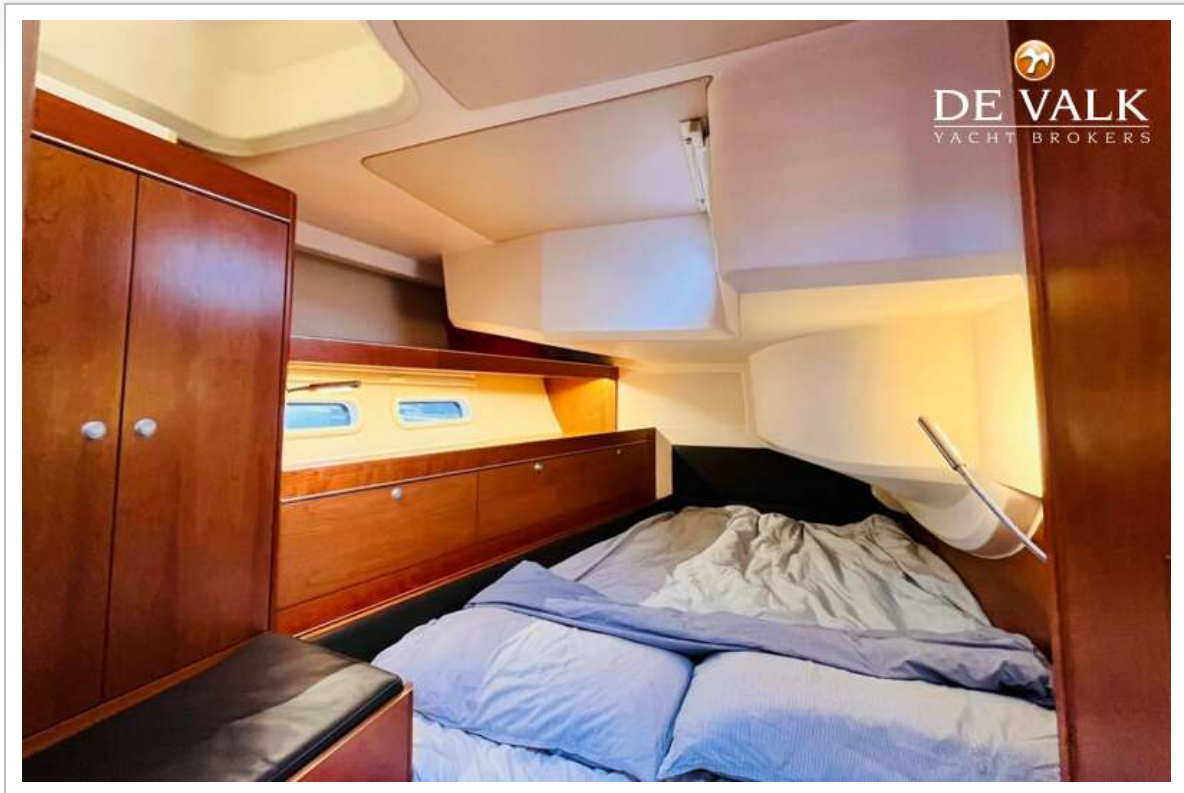
HANSE 575



HANSE 575

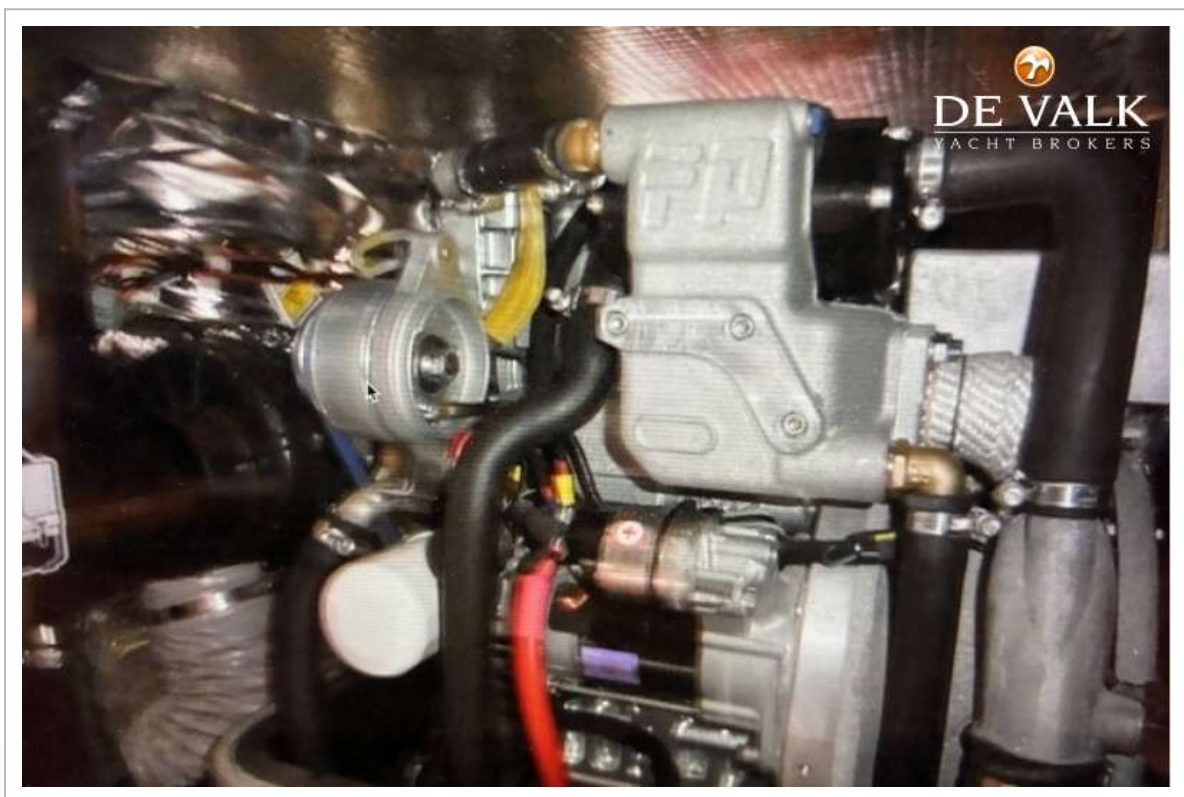


HANSE 575

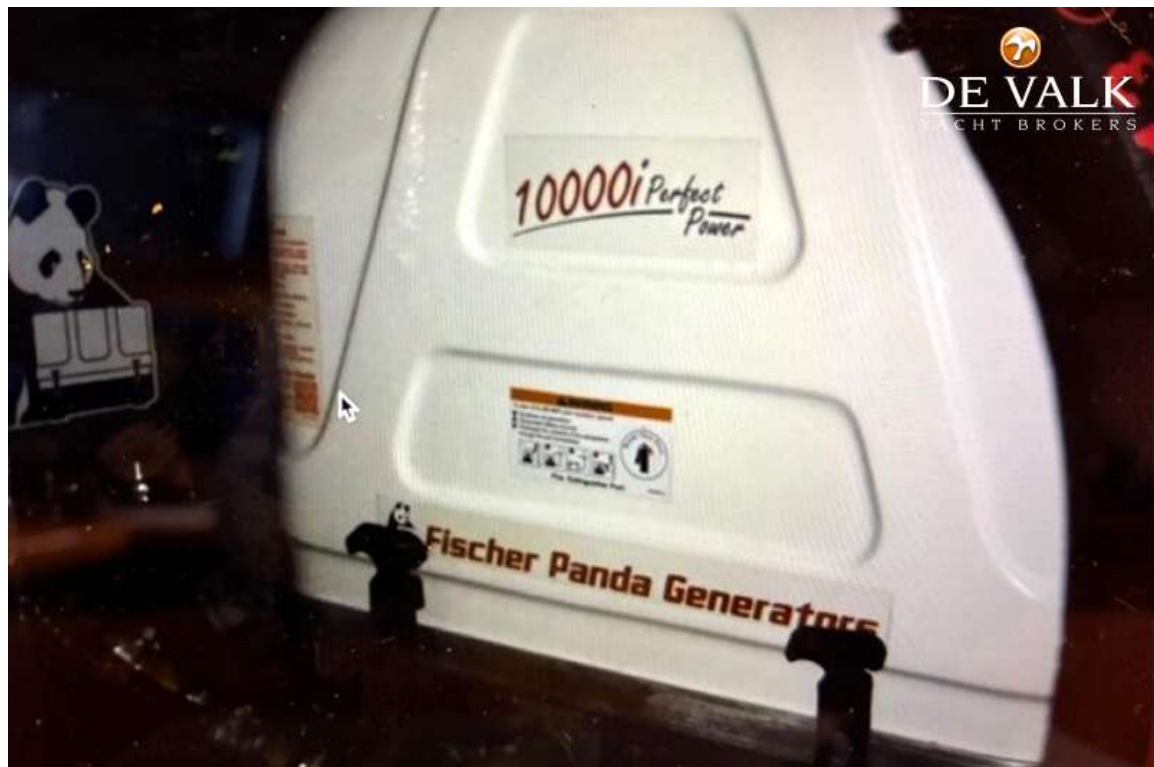




HANSE 575



HANSE 575



Interior layout (Hanse 575)

