



ASTONDOA 102 GLX

ASTONDOA 102 GLX

BROKER'S COMMENTS

The Astondoa 102 GLX, from the first owner, combining timeless elegance with exceptional performance. It features a spacious and stylish interior with a comfortable salon, dining area, and 4+1 cabins, each with its own ensuite bathroom. Equipped with new navigation and entertainment systems, a modern flybridge with a bar, and a generous sun deck. Tender included. The photos were taken recently. This yacht will be auctioned soon at Bright Auctions, see : <https://bit.ly/Astondoa102GLX> , last viewing day March 21

Arjen Hoeksma

SPECIFICATIONS

Dimensions	31.45 x 7.03 x 2.56 (m)	Builder	Astondoa Yachts
Built	2007	Cabins	5
Material	GRP	Berths	9
Engine(s)	2 x MTU 16V 2000 M91 diesel	Hp/Kw	2 x 2,433.00 (hp), 1,790.69 (kw)
Asking price	Under Offer (VAT)	Lying	France

CONTACT

Sales office	De Valk Dalmatia	Telephone	0031 653 299 244
Address	Ul. Velimira Skorpika 22000 Sibenik HR	E-mail	dalmatia@devalk.nl

DISCLAIMER

These particulars are given in good faith as supplied but cannot be guaranteed.



ASTONDOA 102 GLX

GENERAL

Model	ASTONDOA 102 GLX
Type	motor yacht
LOA (m)	31,45
LWL (m)	26,10
Beam (m)	7,03
Draft (m)	2,56
Headroom (m)	2,05
Year built	2007
Builder	Astondoa Yachts
Country	Spain
Gross tonnage	169
Net tonnage	50
Hull material	GRP
Hull colour	off-white
Hull shape	deep-V
Superstructure material	GRP
Rubbing strake	plastic
Deck material	GRP
Deck finish	teak
Superstructure deck finish	teak
Cockpit deck finish	teak
Antifouling (year)	2025, extensive maintenance in 2025 in dock
Dorades	yes
Deckhatch	yes
Portholes	yes
Insulation	yes
Flybridge	With fridge
Flybridge cover	yes
Flybridge cockpit cover	yes
Flybridge suncover	yes



ASTONDOA 102 GLX

Fuel tank (litre)	aluminium 4x, total 12.200 liter incl day tank, cleaned 02-2025
Level indicator (fuel tank)	yes
Fuel daytank (litre)	yes
Level indicator (daytank)	yes
Freshwater tank (litre)	steel 2 tanks total 3,500 liter
Level indicator (freshwater)	yes
Blackwater tank (litre)	600 liter
Level indicator (blackwater)	yes
Blackwater tank extraction	deck extraction + pump
Greywater tank (litre)	700
Level indicator (greywater)	yes
Wheel steering	hydraulic
Inside helm position	yes
Outside helm position	hydraulic Aft deck
Flybridge helm position	yes
Extra info	Extensive maintenance in 2025

ACCOMMODATION

Cabins	5
Berths	9
Crew cabin	2
Crew berths	4
Interior	mahogany
Floor	parquet Salon
Aft deck	yes
Saloon	yes
Headroom saloon (m)	2,05
Air-conditioning	Frogomar 2x 70,000 BTU (2020)
Navigation center	yes
Chart table	yes
Dinette	yes



ASTONDOA 102 GLX

Galley	yes
Countertop	corian
Sink	stainless steel
Cooker	ceramic Miele 4 burner
Oven	Miele
Microwave	Miele M8261
Fridge	Miele Dynacool with freezer, Liebherr with freezer kitchen
Wine cooler	2x Miele in kitchen
Hot water system	yes
Water pressure system	Gianneschi ACM 401 BT (2x)
Dishwasher	yes
Crockery	yes
Owners cabin	French bed With sitting area and Bose sound system
Bed length (m)	2,00
Wardrobe	walk-in closet
Bathroom	en suite
Toilet	en suite
Toilet system	electric
Wash basin	in the bathroom
Shower	en suite
Guest cabin 1	double bed VIP
Bed length (m)	2,00
Wardrobe	hanging/drawers/shelves
Bathroom	en suite
Toilet	en suite
Toilet system	electric
Wash basin	in the bathroom
Shower	en suite
Guest cabin 2	twin single
Bed length (m)	2,00
Wardrobe	hanging/drawers/shelves
Bathroom	en suite



ASTONDOA 102 GLX

Toilet	en suite
Toilet system	electric
Wash basin	in the bathroom
Shower	en suite
Guest cabin 3	twin single 2,00
Bed length (m)	2,00
Wardrobe	hanging/drawers/shelves
Bathroom	yes
Toilet	en suite
Toilet system	electric
Wash basin	in the bathroom
Shower	en suite
Guest cabin 4	single bed Captain cabin
Bed length (m)	2,00
Wardrobe	hanging/drawers/shelves
Bathroom	yes
Toilet	en suite
Toilet system	electric
Wash basin	in the bathroom
Shower	en suite
Crew cabin(s)	2
Bathroom (crew)	2
Toilet (crew)	2
Toilet system	electric
Wash basin	in the bathroom
Shower (crew)	2
Washing machine	Miele W1 Excellence
Dryer	Miele T!
Flybridge	yes
Tender garage	Foredeck



ASTONDOA 102 GLX

MACHINERY

No of engines	2
Make	MTU
Type	16V 2000 M91
HP	2433
kW	1790.69
Fuel	diesel
Engine cooling system	freshwater heat exchanger
Drive	shaft
Engine controls	electrical MTU, inside, fly and aft deck
Gearbox	ZF
Engine controls	yes
Bowthruster	PTO engines
Sternthruster	PTO engines
Propeller type	fixed
Propeller blades	5
Propeller shaft material	steel
Manual bilge pump	yes
Electric bilge pump	yes
Bilge alarm	yes
Generator	Kohler 33 EFOZ 33 Kw
Running hours generator	2950
Generator 2	Kohler 33 EFOZ 33 Kw
Running hours generator 2	2850
Batteries	yes
Start battery	yes
Service battery	yes
Navigation Battery	yes
Generator battery	yes
Inverter	Mastervolt Mass Si (2x)ne 24V/5000W
Battery charger/inverter	Mastervolt



ASTONDOA 102 GLX

Shorepower	yes
Insulation transformer	yes
Watermaker	Never used
Extra info	10 years engine service 2021 + removing head
Extra info	2021 all tanks cleaned, fuel again 2025

NAVIGATION

Compass	yes
Compass on flybridge	yes
Electric compass	yes
Depth sounder/log	Raymarine
Windset	Raymarine
Repeater	2x Raymarine ST2 90
VHF	Raymarine A80289
Autopilot	Raymarine smartpilot
Rudder angle indicator	Raymarine ST2 90
Radar	yes
GPS	Ramarine
Plotter/GPS	Raymarine
Radar/GPS	yes
Radar/GPS/plotter	Raymarine
AIS receiver	yes
AIS transponder	yes
Camera	4x (aft-deck, engine room, fly and passerelle)
Navigation lights	yes
Searchlight	yes

EQUIPMENT

Cockpit cover	yes
Bimini	yes
Sun awning	yes



ASTONDOA 102 GLX

Cockpit cushions	yes
Cockpit table	yes
Cockpit chairs	yes
Bathing platform	yes
Boarding ladder	yes
Transom door	yes
Bow ladder	yes
Gangway	Hydraulic
Deck shower	yes
Anchor	Galvanised
Anchor chain	80 meters
Chain counter	yes
Windlass	yes
Capstan	yes
Deck wash	yes
Dinghy	Zodiac 380 YL
Outboard	Yamaha 40 hp
Sea railing	stainless steel
Railing side opening gates	Both sides
Life raft	2x Seasafe 8 persons
Wiper	yes
Horn	yes
Radar reflector	yes
Fenders	yes
Mooring lines	yes
Alarm system	Iris control panel
TV	Master and saloon retractable
Satellite	Tracphone F33
Radio	yes
Radio-cd player	yes
Speakers in salon	yes
Fire extinguisher	yes



Extra info

Fuel tanks cleaned 2025

Extra info

April 2025 complete under water section done!



ASTONDOA 102 GLX



ASTONDOA 102 GLX



ASTONDOA 102 GLX



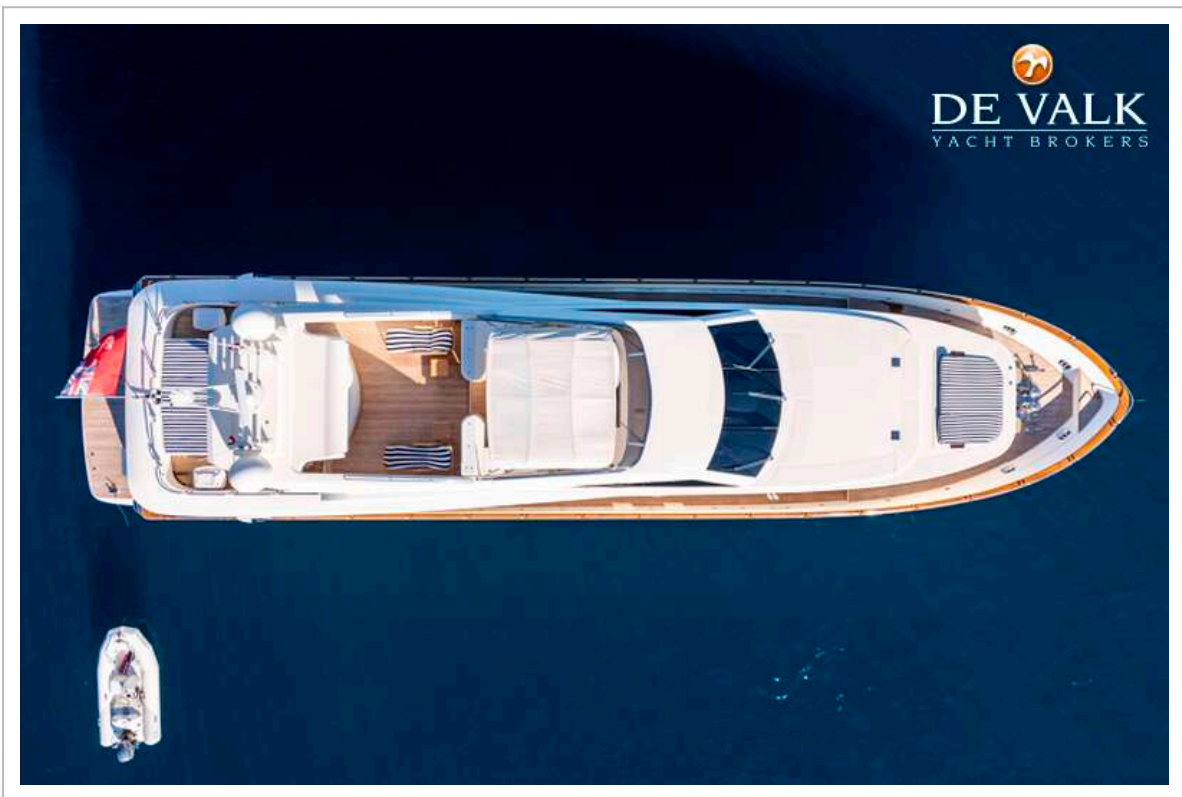
ASTONDOA 102 GLX



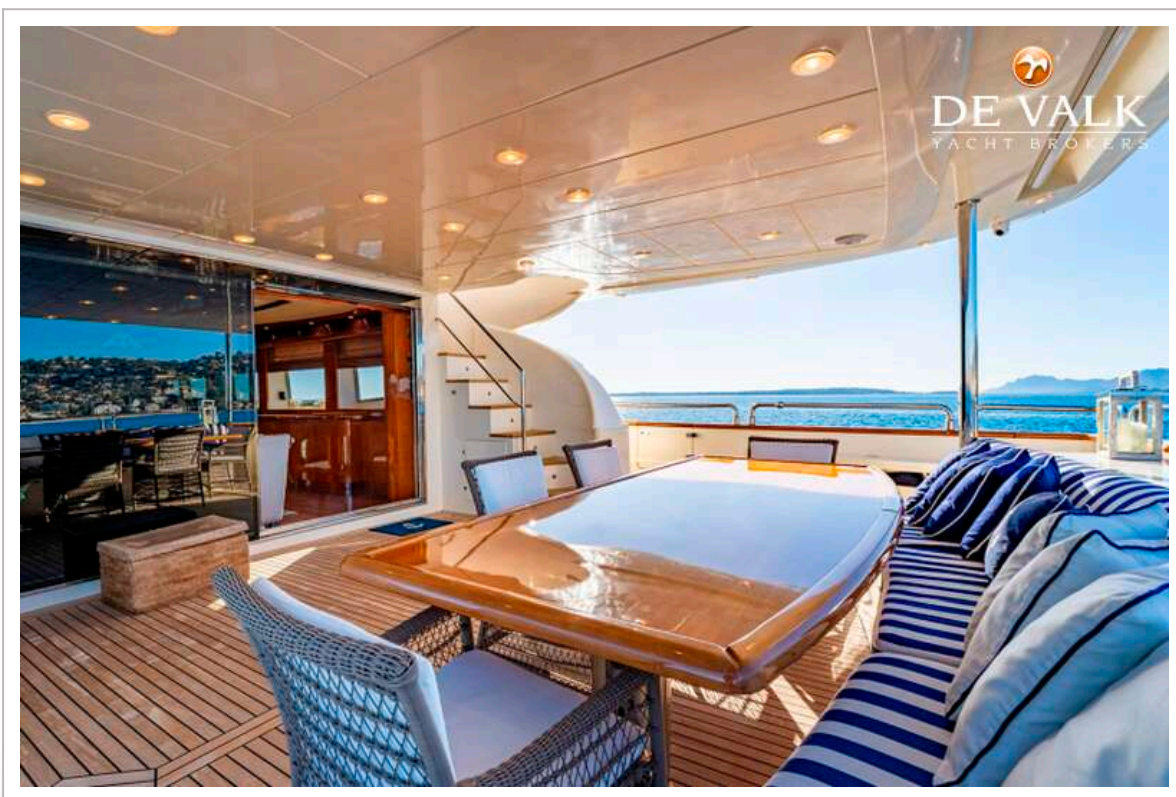
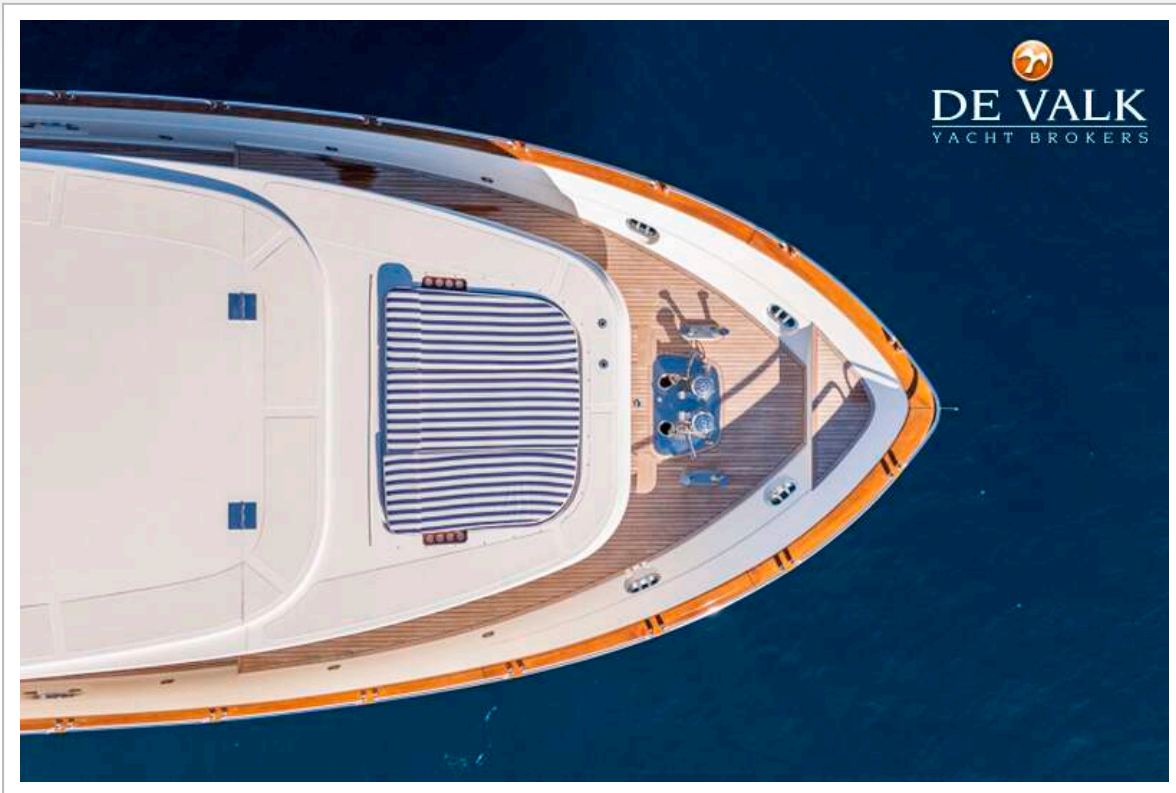
ASTONDOA 102 GLX



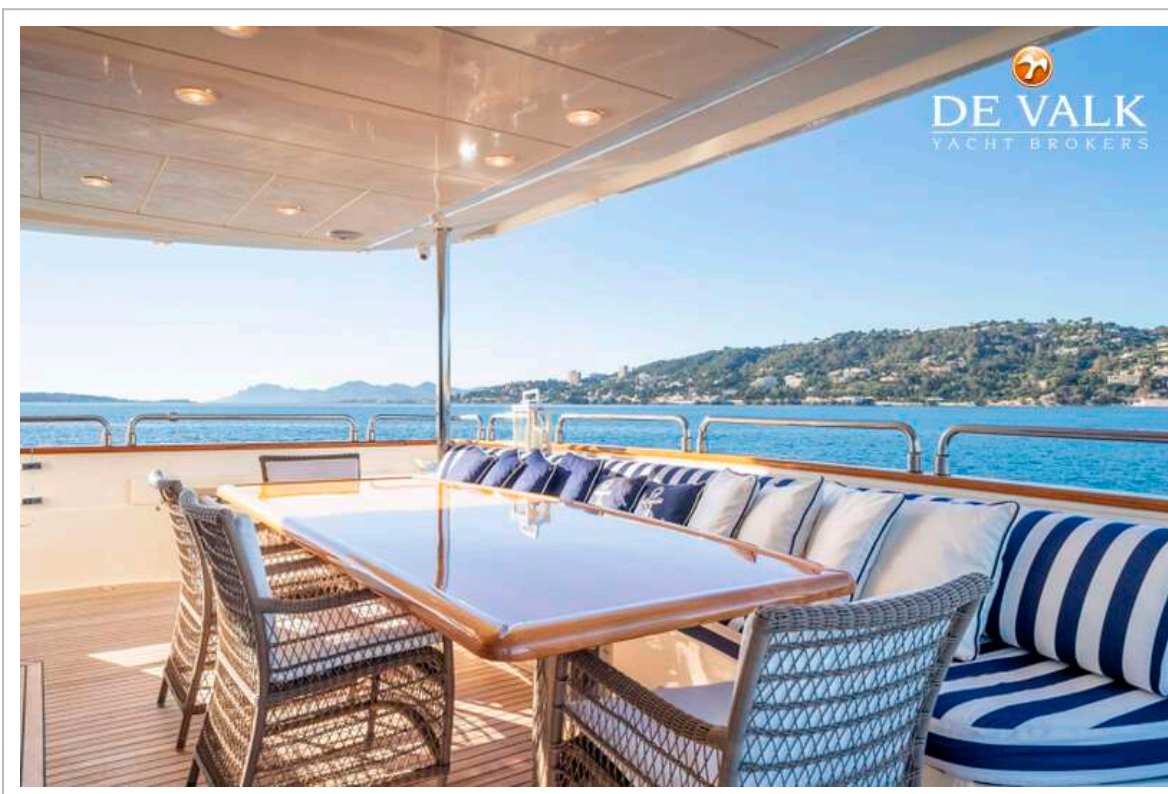
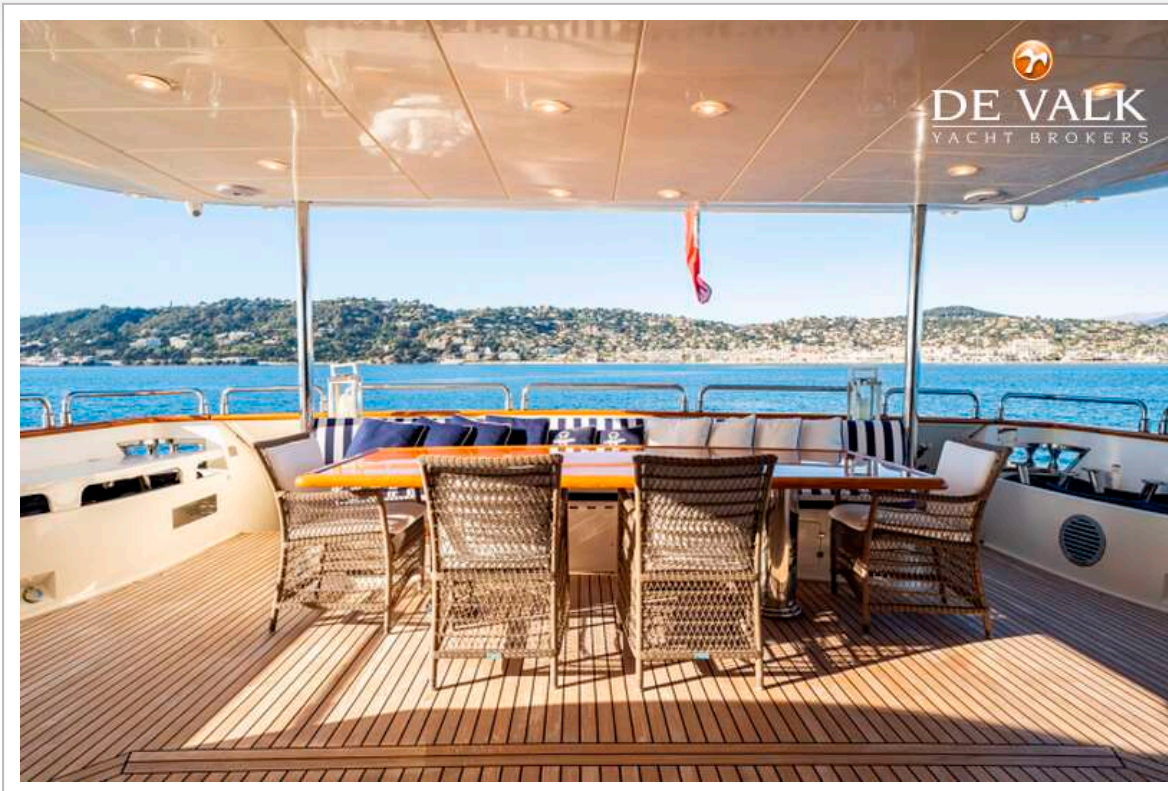
ASTONDOA 102 GLX



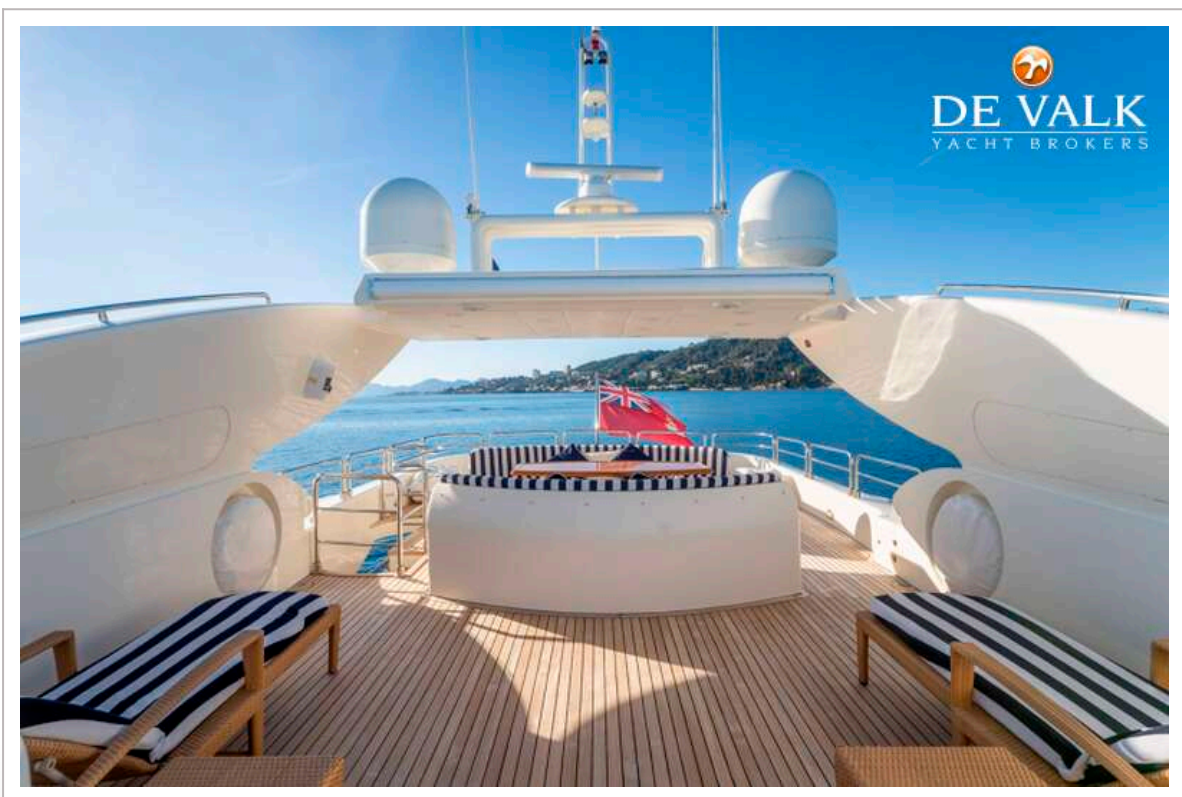
ASTONDOA 102 GLX



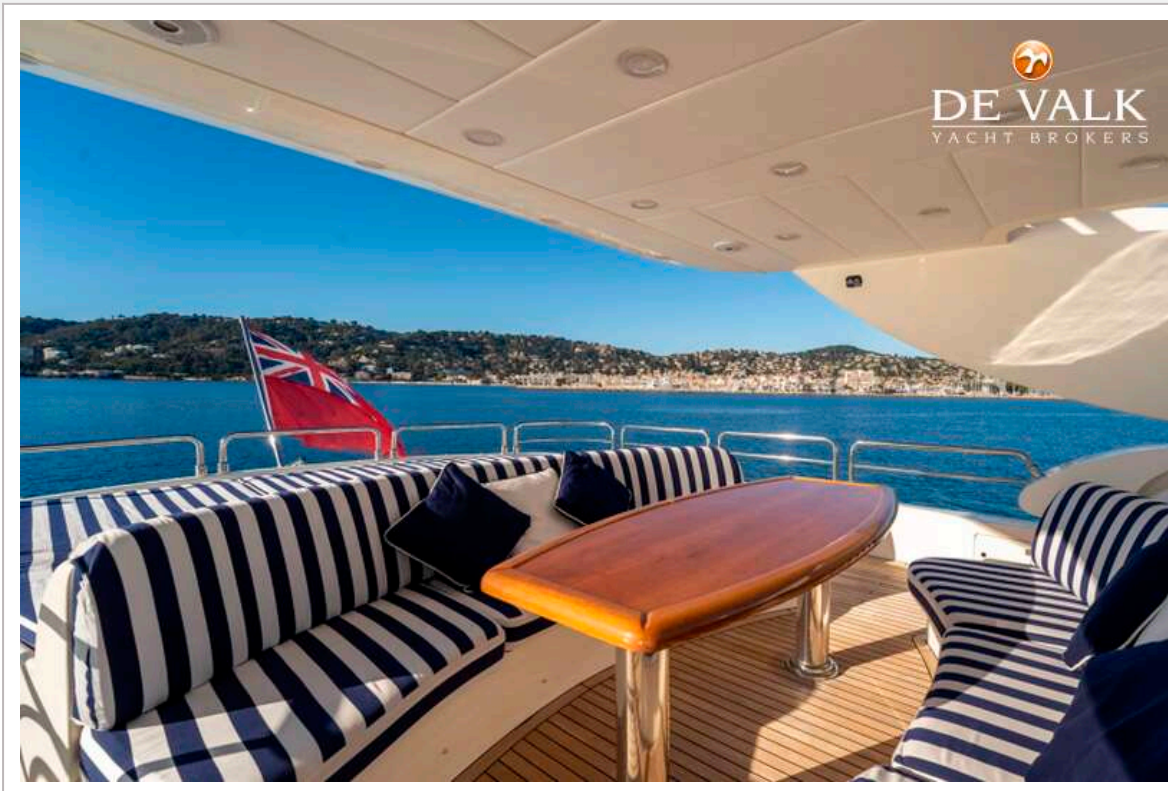
ASTONDOA 102 GLX



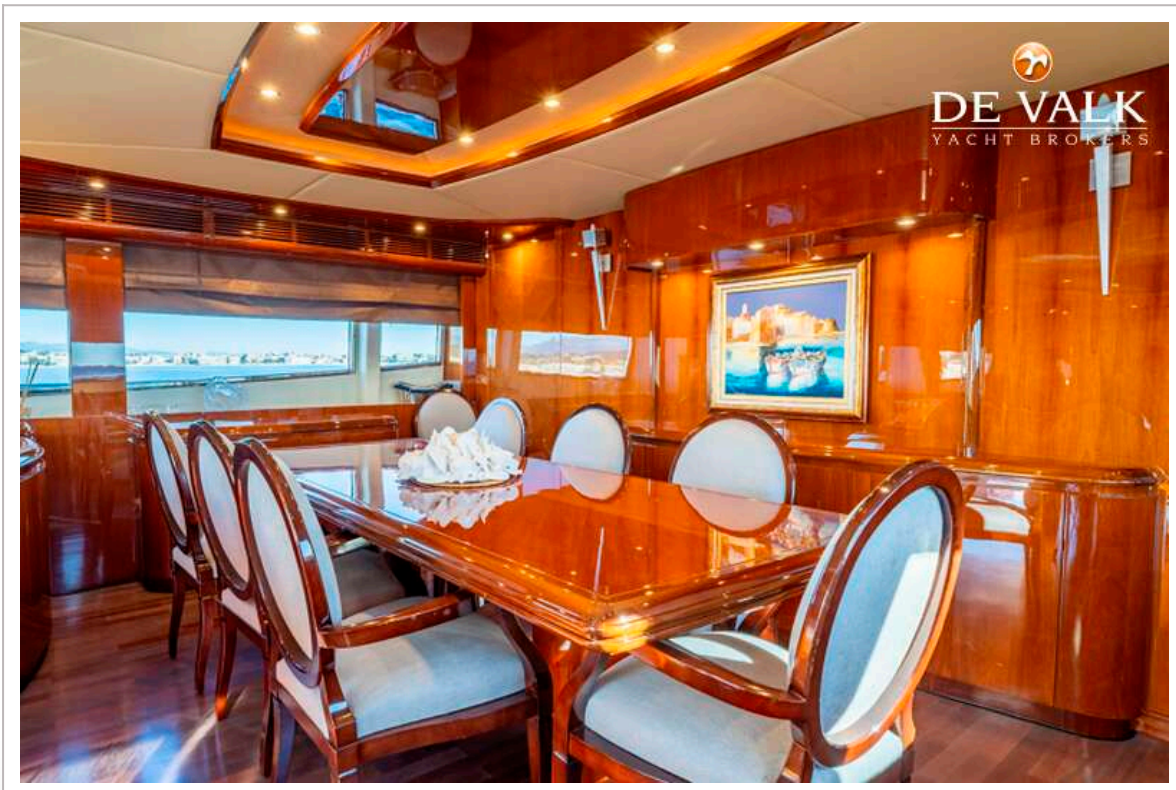
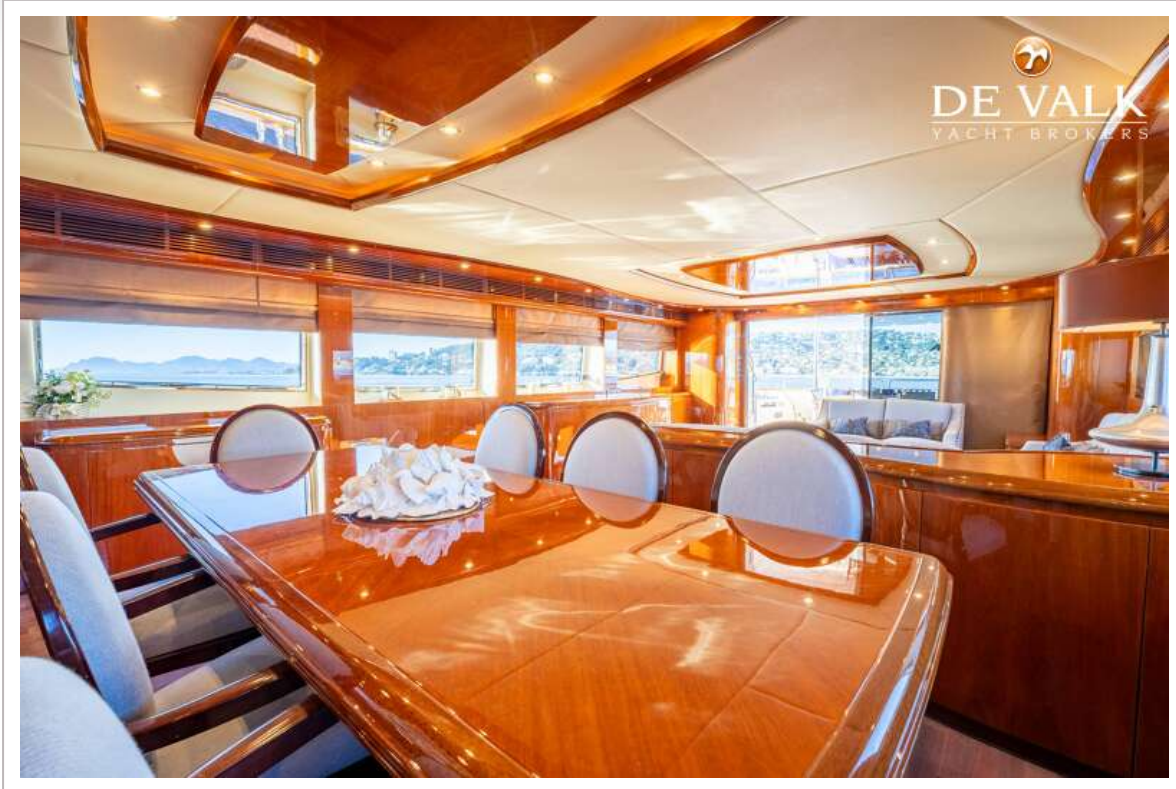
ASTONDOA 102 GLX



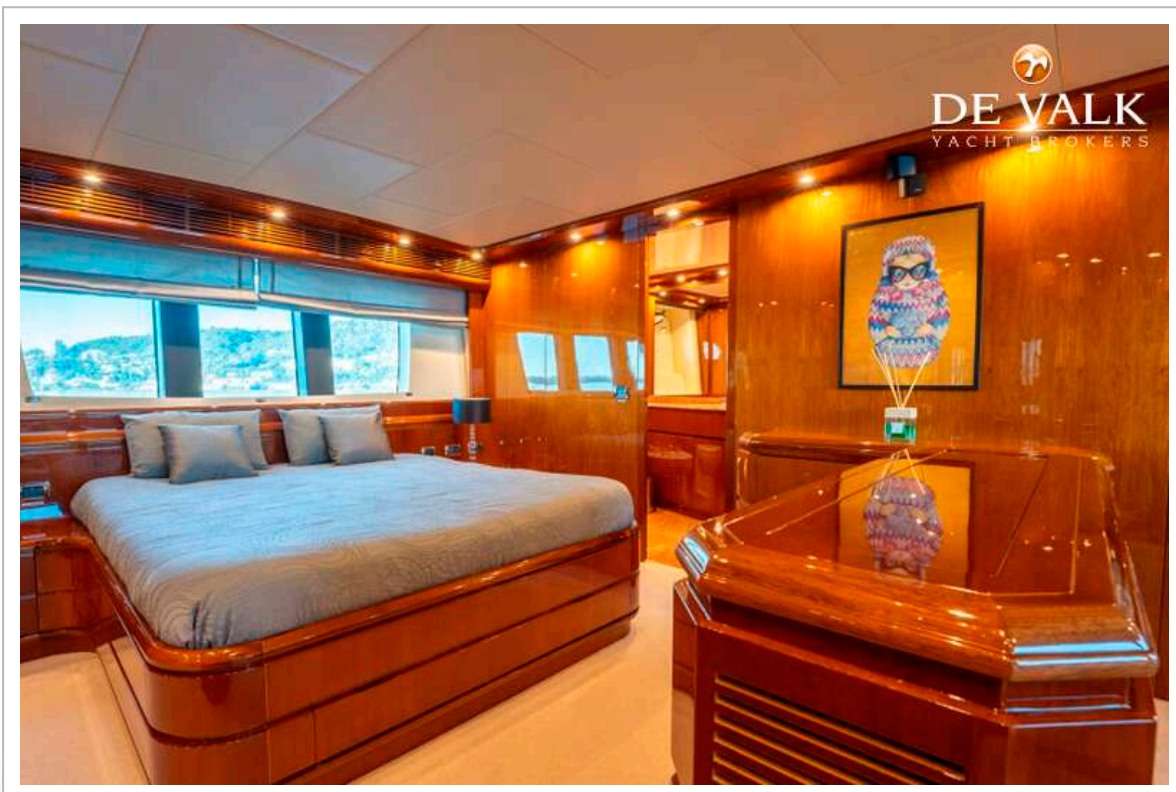
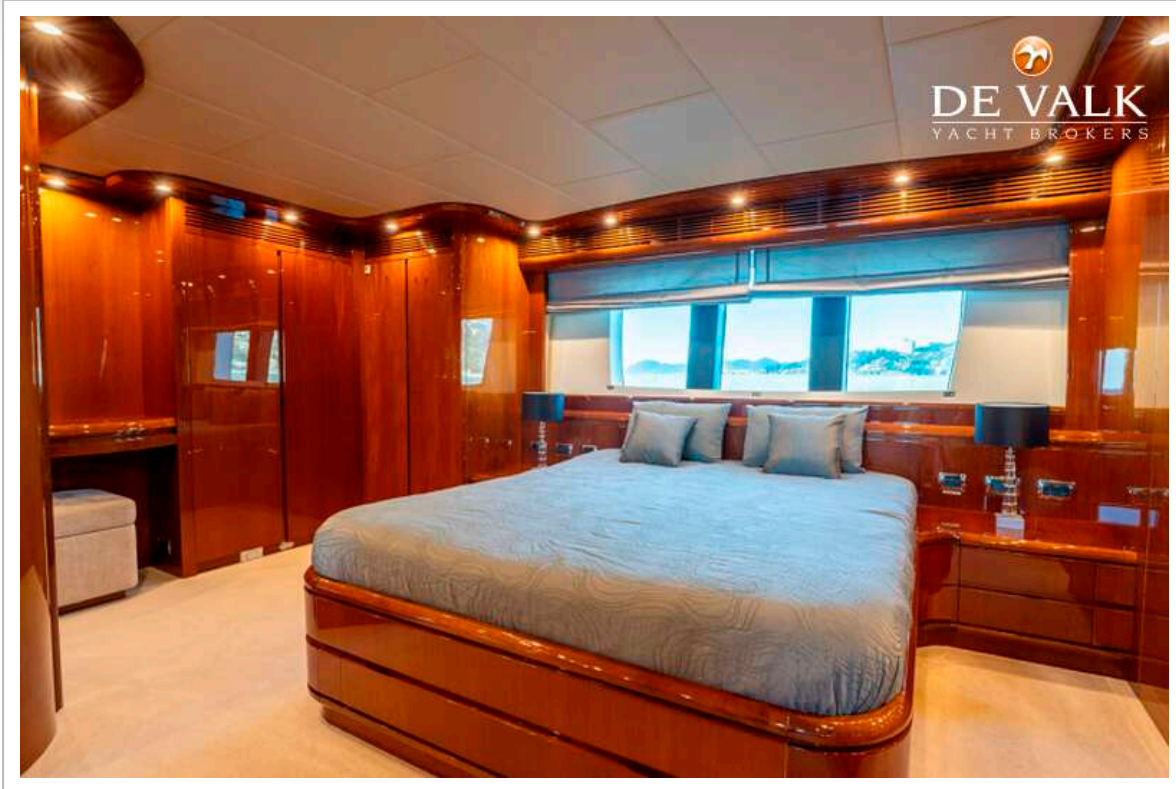
ASTONDOA 102 GLX



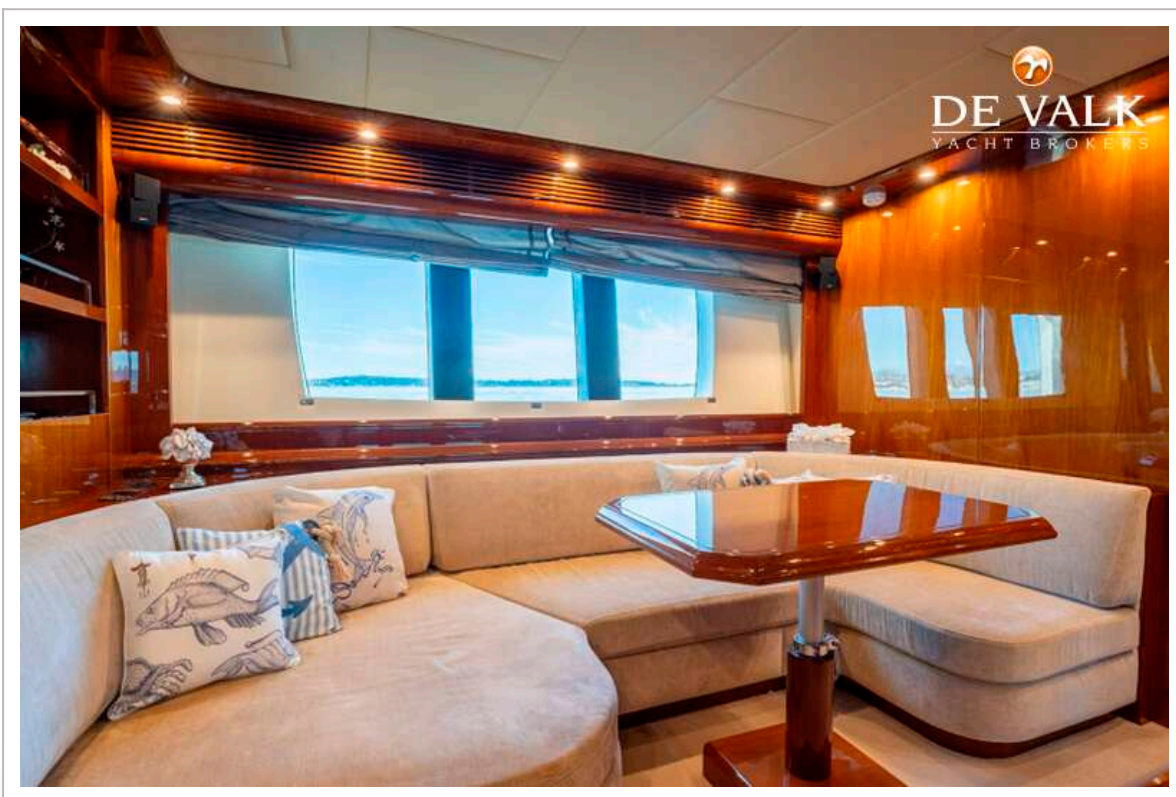
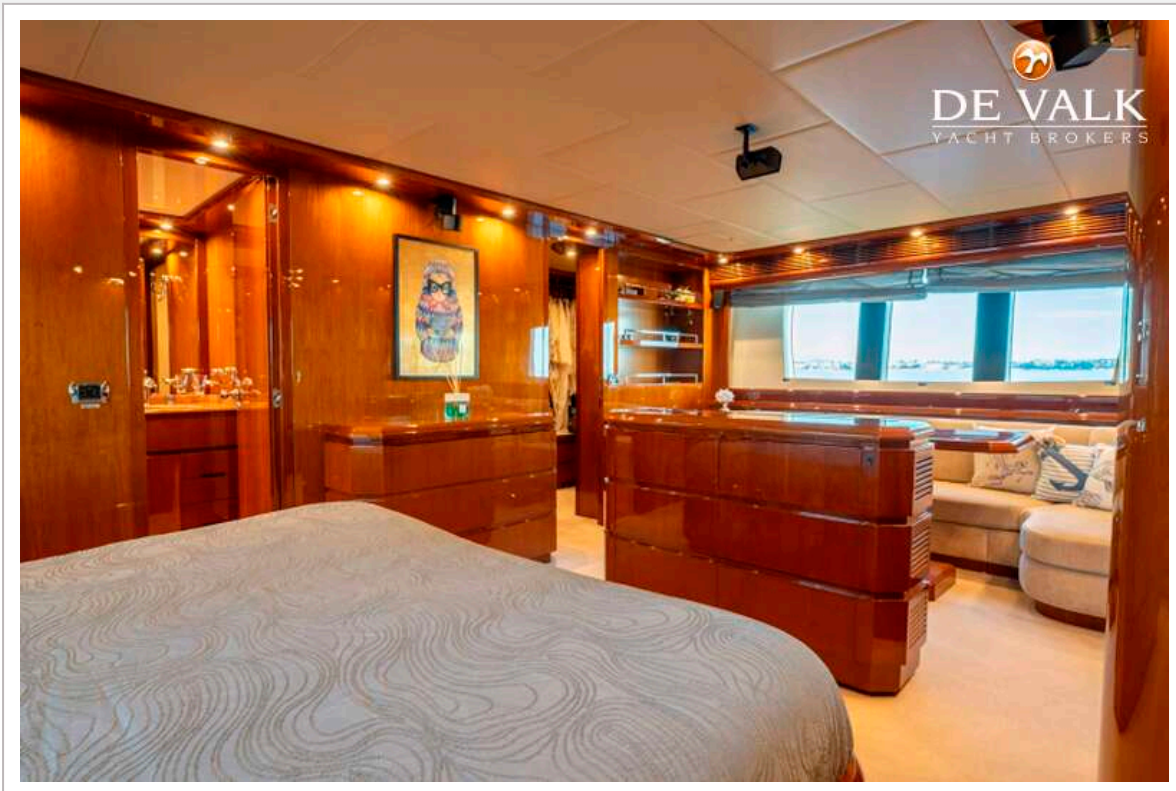
ASTONDOA 102 GLX



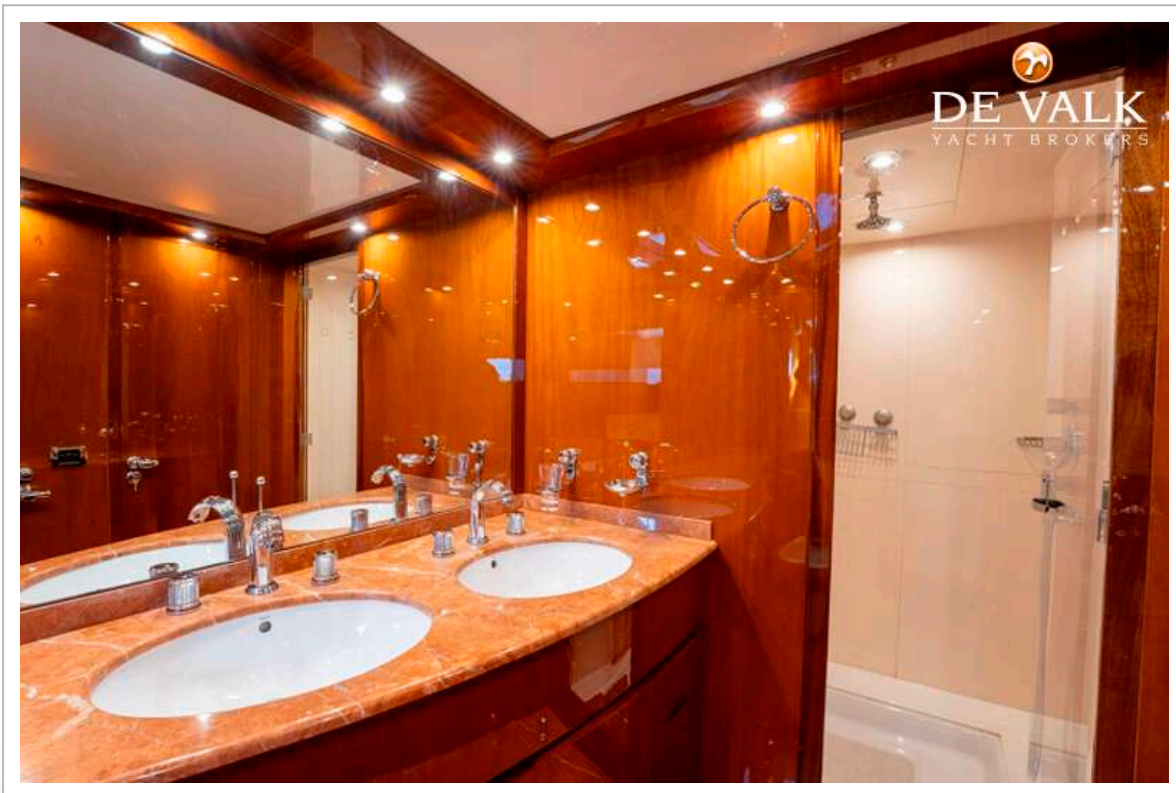
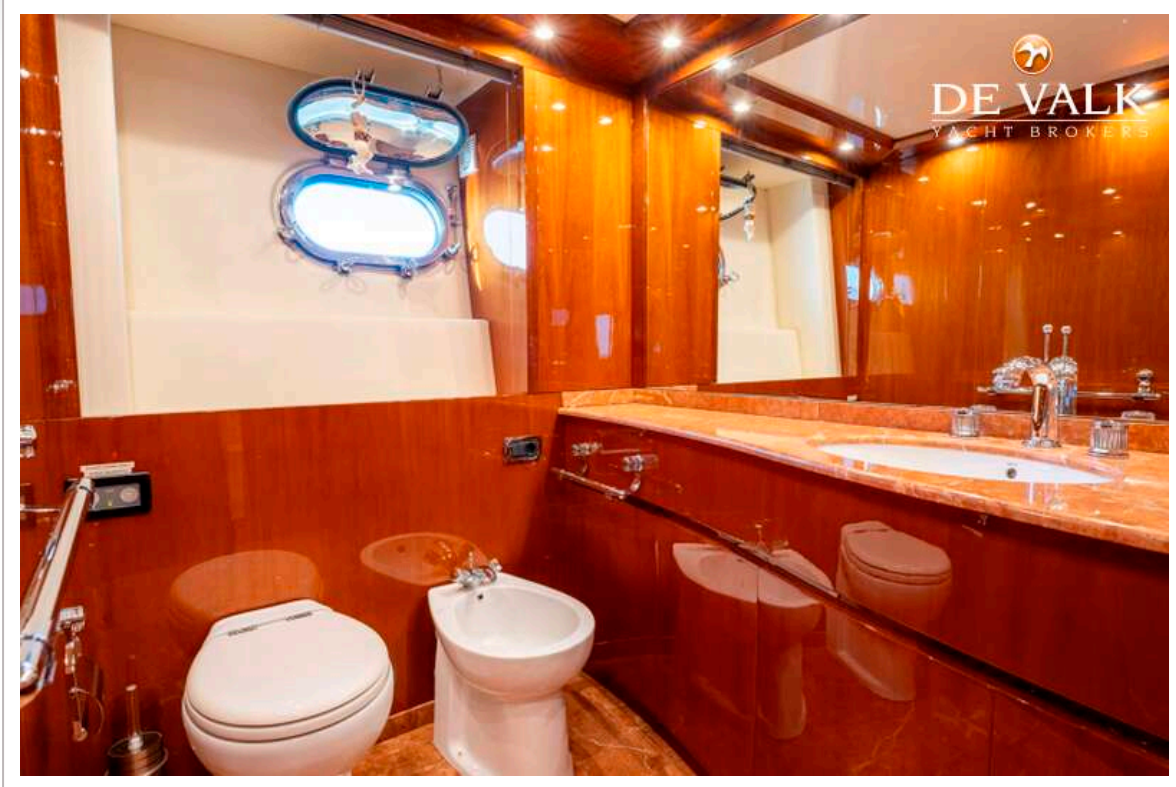
ASTONDOA 102 GLX



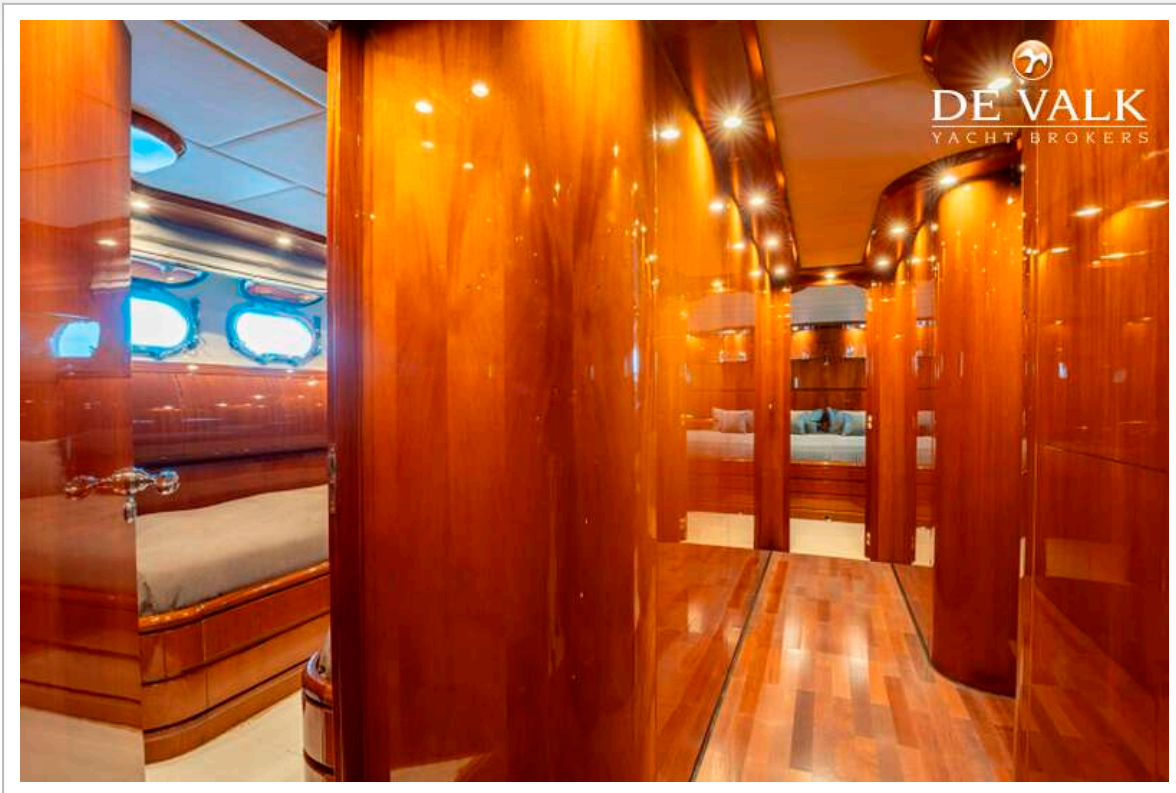
ASTONDOA 102 GLX



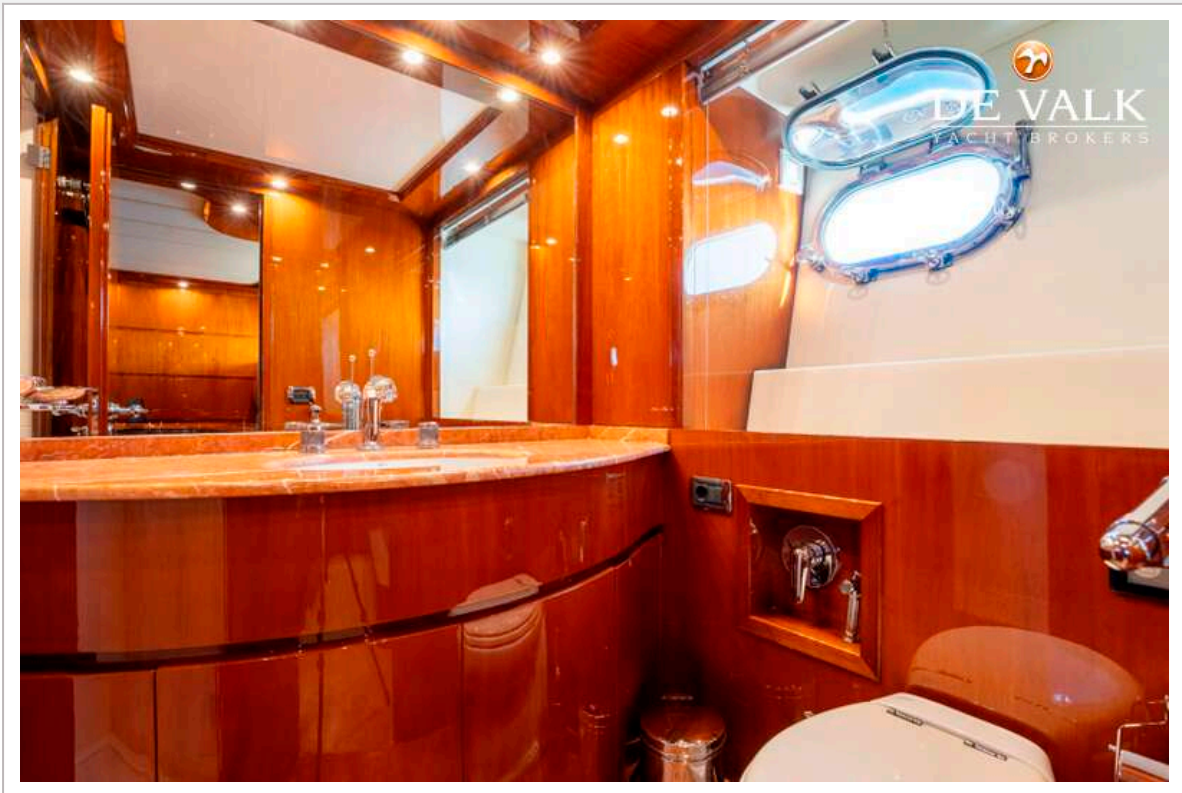
ASTONDOA 102 GLX



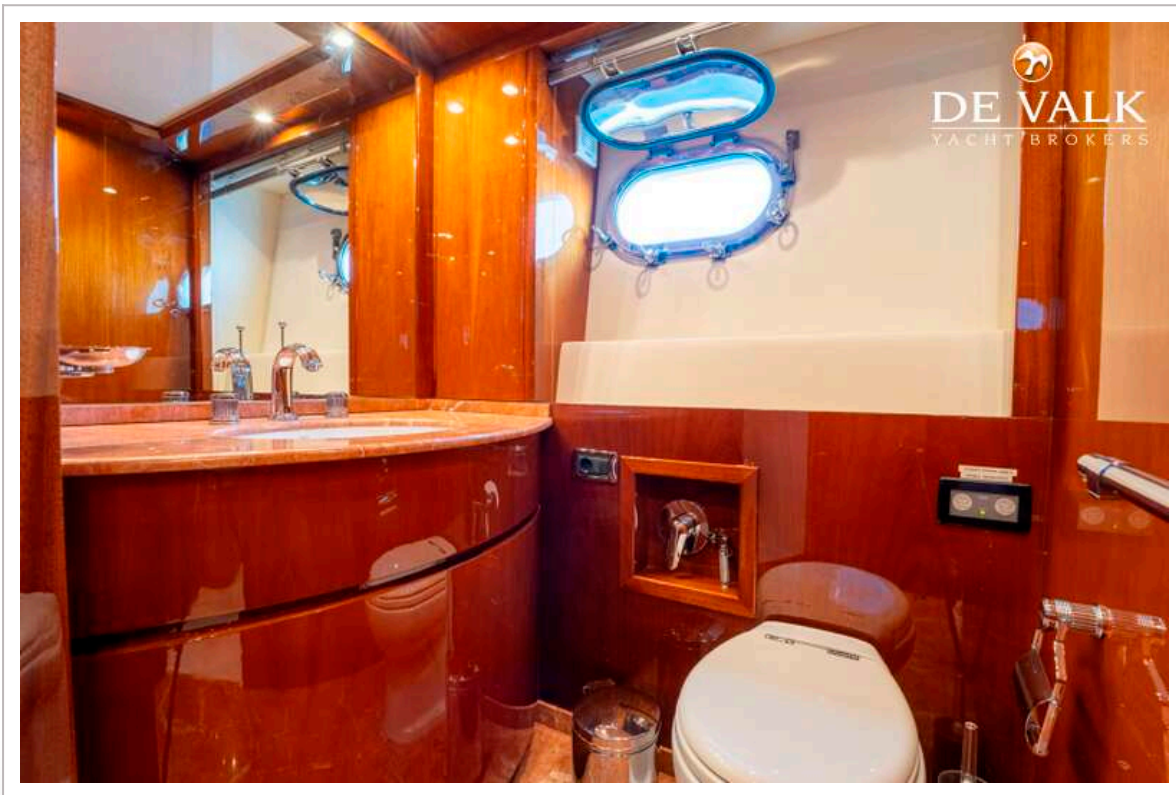
ASTONDOA 102 GLX



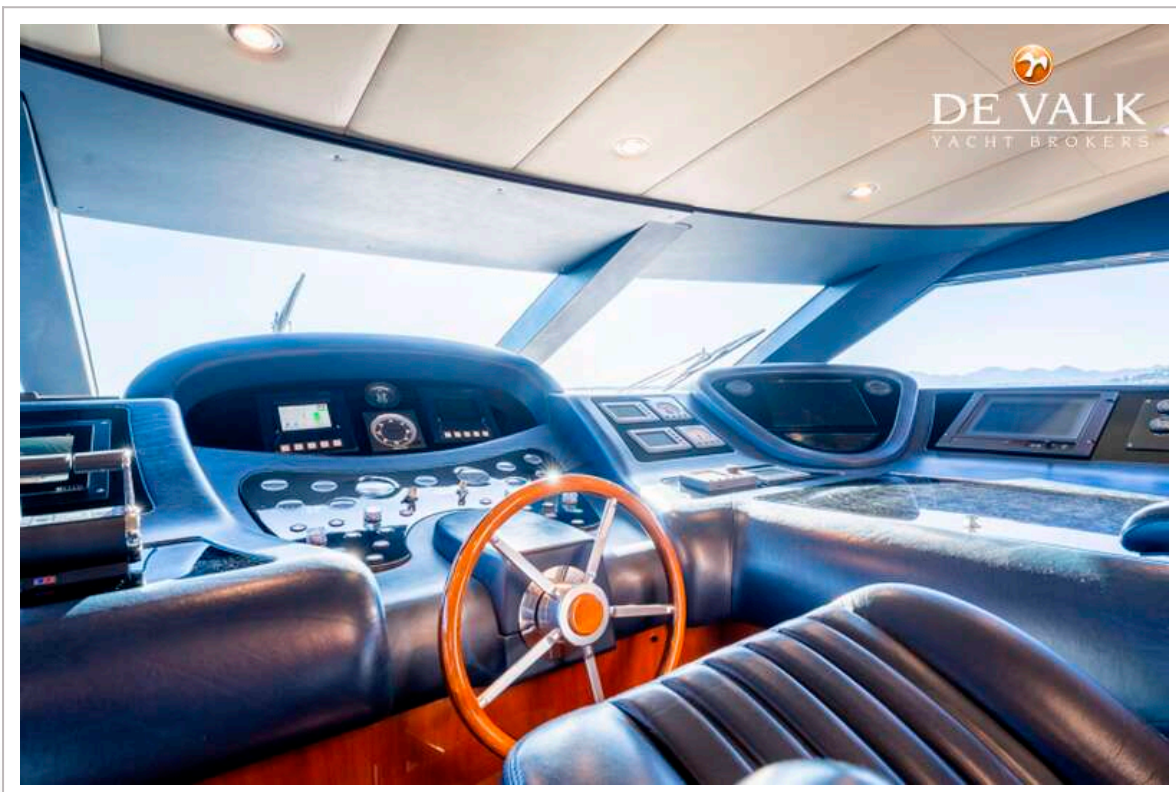
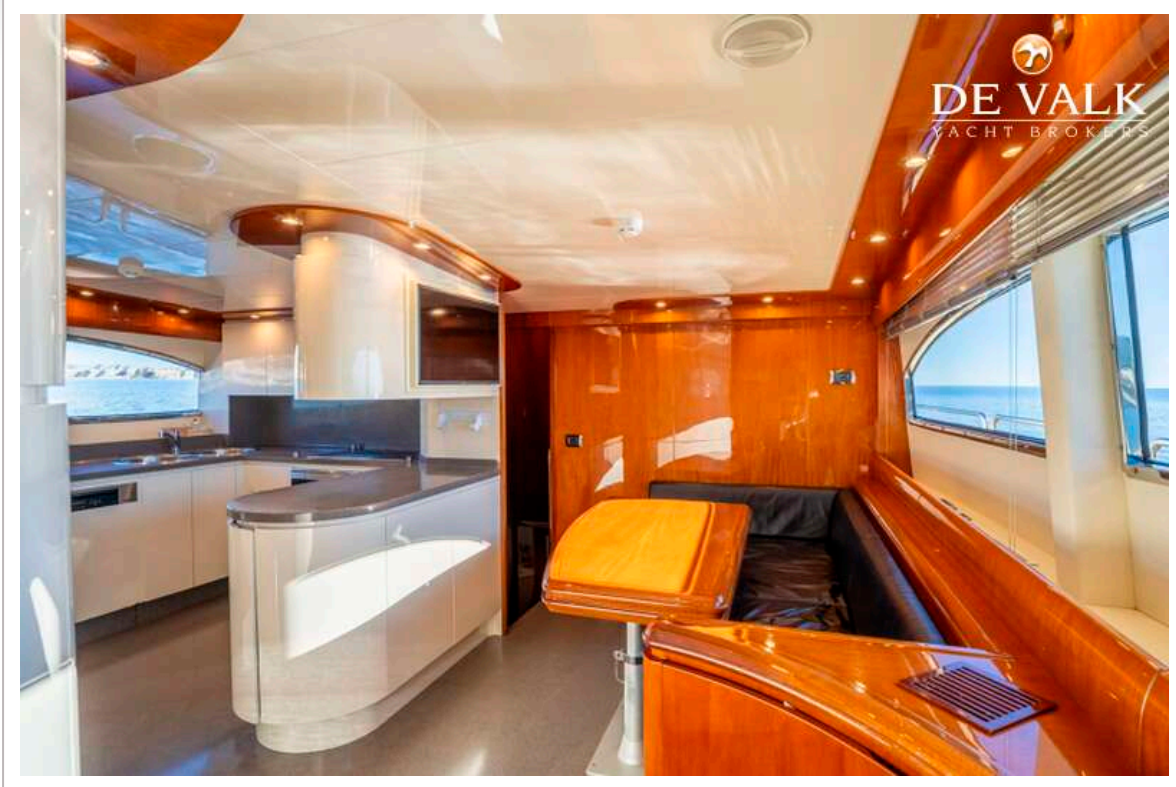
ASTONDOA 102 GLX



ASTONDOA 102 GLX



ASTONDOA 102 GLX



ASTONDOA 102 GLX

