



DE VALK
YACHT BROKERS



RIO YACHTS DAYTONA 35



DE VALK
YACHT BROKERS

BROKER'S COMMENTS

Virtually new Rio Daytona 35, a day/weekend cruiser with 2 great Mercury V8 300 hp engines. It is a so-called centre console version with ample opportunity for sunbathing and relaxing. The front lounge can be converted into a seating area with table with a removable separate bimini for sun protection. Outside this Rio Daytona 35 there is a small kitchenette. Inside, a seating area, a spacious wet room and even a spacious sleeping accommodation for 4 people. This Rio Daytona 35 is an almost new boat with warranty and only 300 engine hours, she is offered at a very interesting price.

Willem Koopmans

SPECIFICATIONS

Dimensions	10.97 x 3.50 x 0.56 (m)	Builder	Rio Yachts
Built	2024	Cabins	2
Material	GRP	Berths	4
Engine(s)	2 x Mercury Verado 300 petrol	Hp/Kw	2 x 300.00 (hp), 220.80 (kw)
Asking price	€ 299.000 (VAT Not paid)	Lying	contact sales office

CONTACT

Sales office	De Valk Costa Blanca	Telephone	+34 96 50 21 569
Address	Costa Blanca Region 03730 Javea Alicante ES	E-mail	costablanca@devalk.nl

DISCLAIMER

These particulars are given in good faith as supplied but cannot be guaranteed.



GENERAL

Model	RIO YACHTS DAYTONA 35
Type	motor yacht
LOA (m)	10,97
LWL (m)	9,73
Beam (m)	3,50
Draft (m)	0,56
Headroom (m)	1,85
Year built	2024
Launched	2024
Builder	Rio Yachts
Country	Italy
Displacement (t)	5,8
CE norm	B
Hull material	GRP
Hull colour	off-white
Hull shape	deep-V
Superstructure material	GRP
Rubbing strake	rubber
Deck material	GRP
Deck finish	synthetic teak
Cockpit deck finish	synthetic teak
Antifouling (year)	2024
Fuel tank (litre)	460
Fuel tank 2 (litre)	460
Level indicator (fuel tank)	yes
Freshwater tank (litre)	160
Level indicator (freshwater)	yes
Blackwater tank (litre)	56
Greywater tank (litre)	90
Wheel steering	hydraulic



Outside helm position yes

ACCOMMODATION

Cabins	2
Berths	4
Saloon	yes
Headroom saloon (m)	1,85
Air-conditioning	yes
Sliding door to cockpit	yes
Galley	Outside
Countertop	yes
Sink	yes
Cooker	calor gas 1 burner
Fridge	yes
Hot water system	220V + engine Boiler
Water pressure system	electrical
Owners cabin	double bed
Bed length (m)	2,1
Bathroom	shared
Toilet	shared
Toilet system	electric
Wash basin	in the bathroom
Shower	shared
Guest cabin 1	double bed Under cockpit
Bed length (m)	2,1
Bathroom	shared
Toilet	shared
Toilet system	electric
Wash basin	in the bathroom
Shower	shared



MACHINERY

No of engines	2
Make	Mercury
Type	Verado 300
HP	300
kW	220.80
Fuel	petrol
Year installed	2024
Maximum speed (kn)	39
Cruising speed (kn)	30
Range (nm)	260
Engine hours	300, ca.
Engine cooling system	seawater
Drive	outboard
Engine controls	electrical
Engine controls	yes
Bowthruster	yes
Propeller type	fixed
Propeller blades	4
Manual bilge pump	yes
Electric bilge pump	yes
Batteries	yes
Start battery	yes
Service battery	yes
Battery charger/inverter	yes
Shorepower	with cable
Trimtabs	yes

NAVIGATION

Compass	yes
VHF	Garmin



Plotter/GPS	Garmin 12 inch
Navigation lights	yes

EQUIPMENT

Fixed windscreen	yes
Fixed hardtop	yes
Bimini	For front deck, removable
Cockpit cushions	yes
Cockpit table	yes
Bathing platform	yes
Boarding ladder	yes
Deck shower	yes
Anchor	yes
Anchor chain	yes
Windlass	Lofrans X1
Horn	yes
Fenders	yes
Mooring lines	yes
TV	yes
Radio-cd player	Fusion
Cockpit speakers	yes
Speakers in salon	yes
Fire extinguisher	yes
Latest extinguisher survey	2024





RIO YACHTS DAYTONA 35



RIO YACHTS DAYTONA 35



RIO YACHTS DAYTONA 35



RIO YACHTS DAYTONA 35



RIO YACHTS DAYTONA 35



RIO YACHTS DAYTONA 35

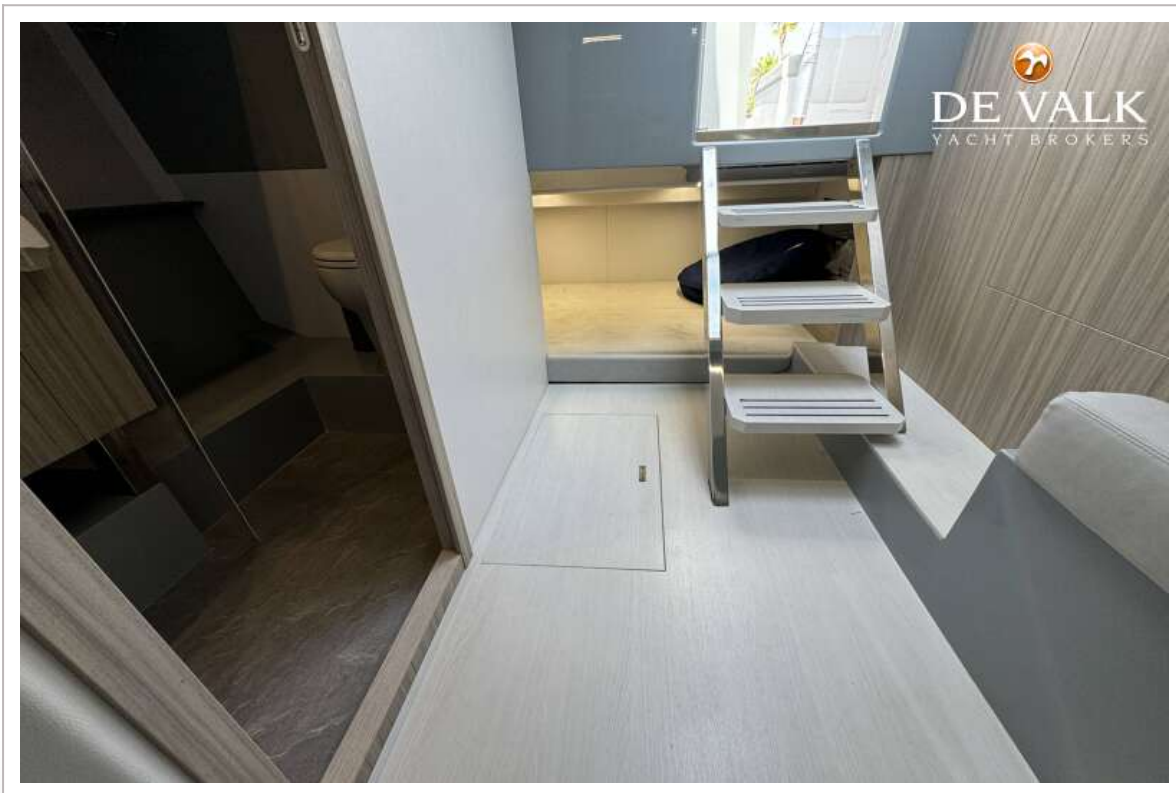




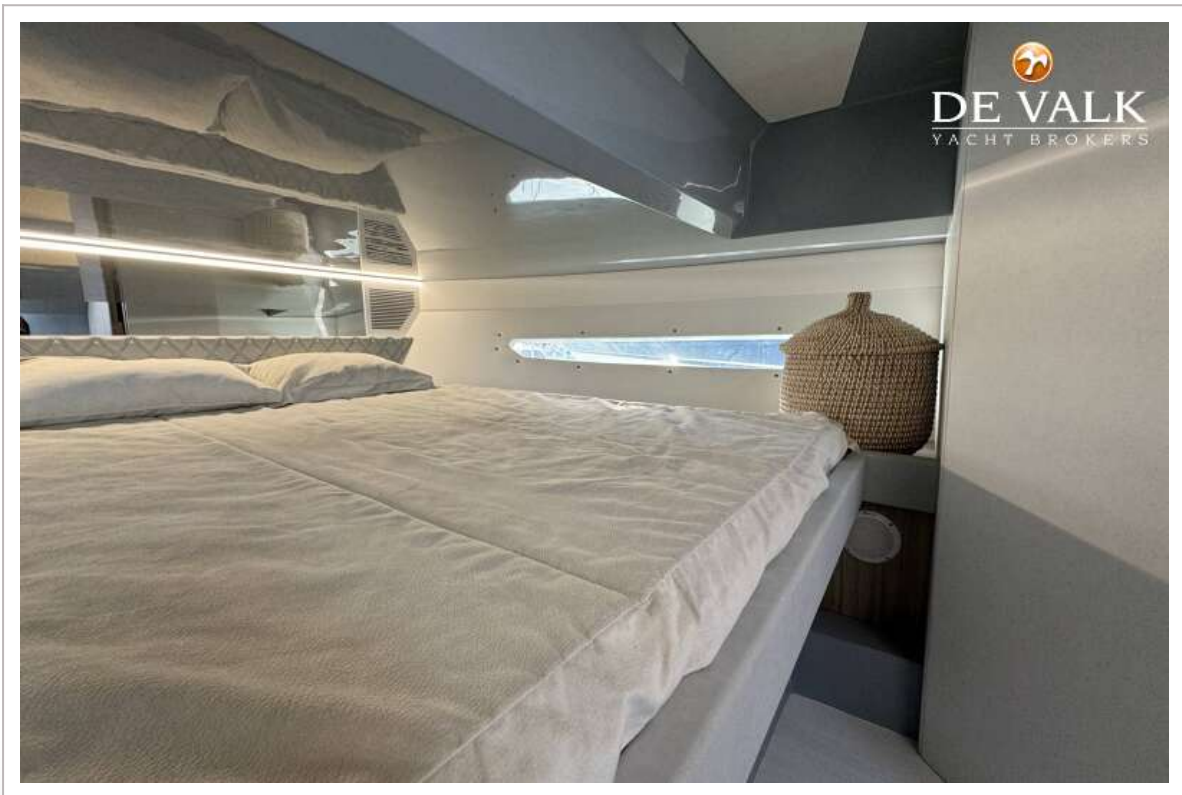
RIO YACHTS DAYTONA 35

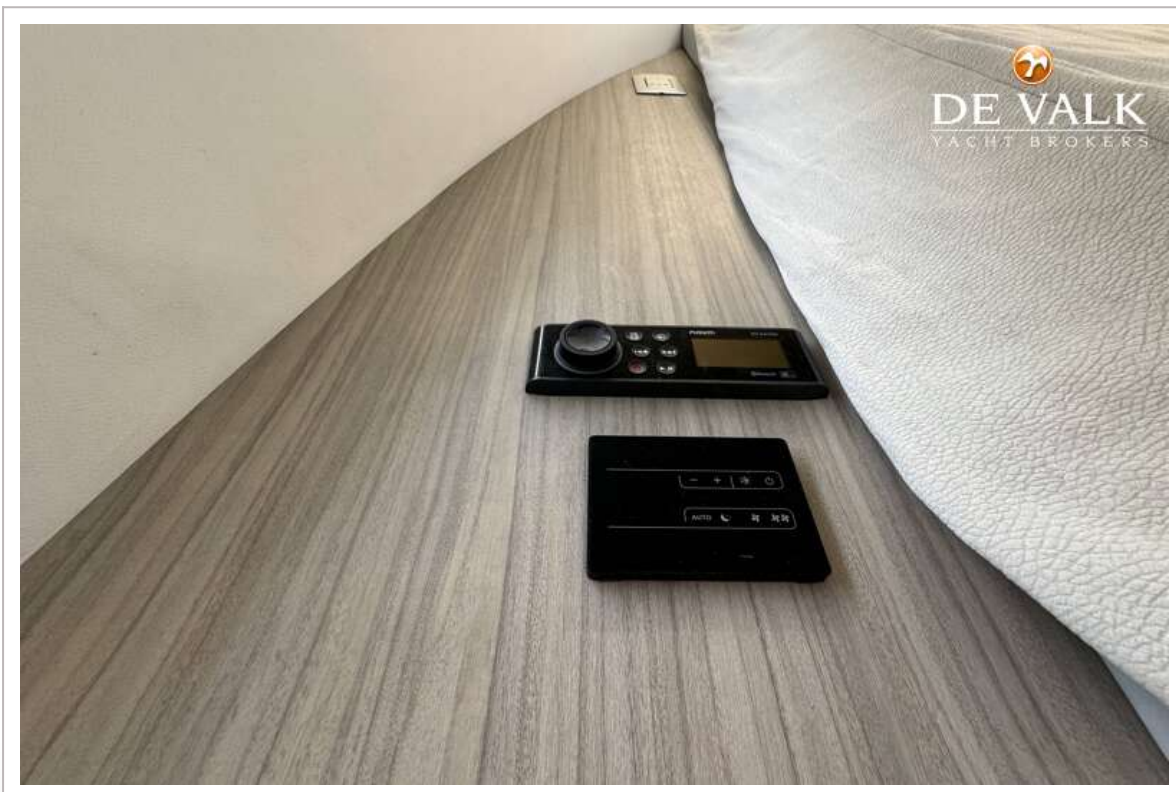
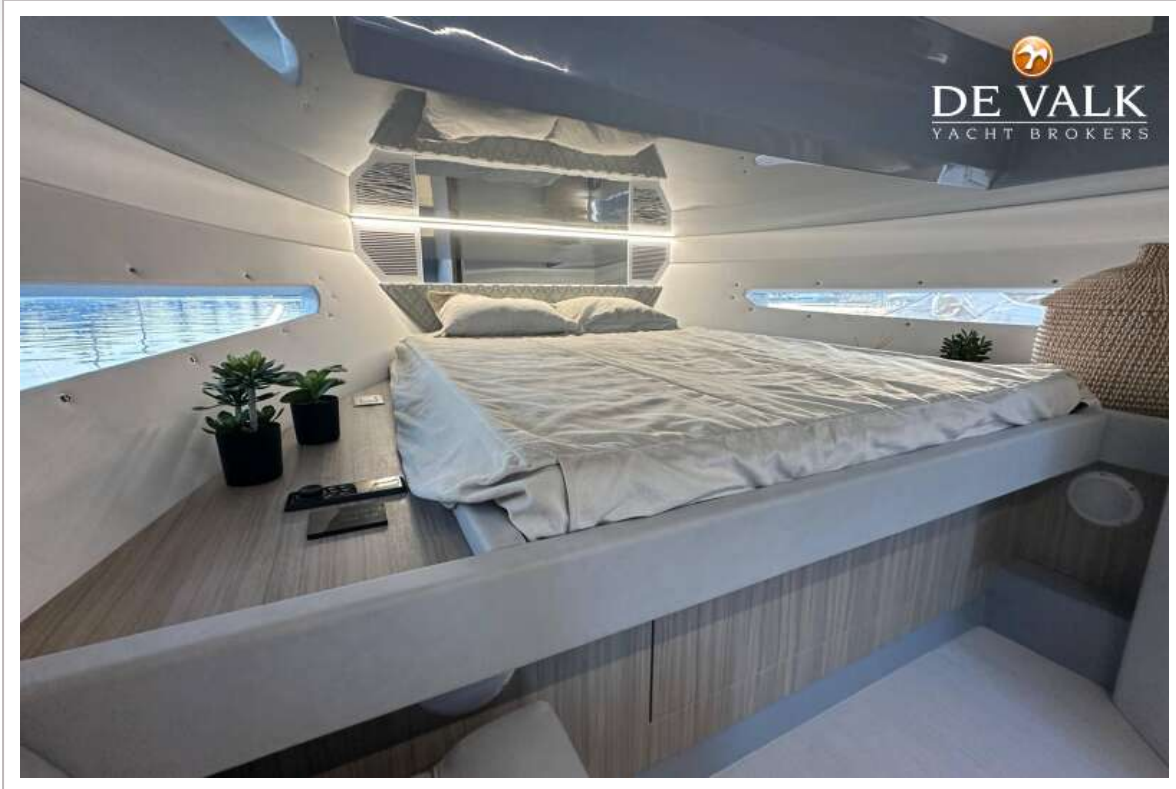


RIO YACHTS DAYTONA 35











RIO YACHTS DAYTONA 35



