



## HOUSEBOAT SENSO 45

# HOUSEBOAT SENSO 45

## BROKER'S COMMENTS

This is about an exciting new boat on the houseboat market. The vessel on display is our demo model. Picture yourself sitting by the water's edge as the sun sets, painting the sky with its final stunning hues. You step inside, enjoy a refreshing shower, and prepare a delightful meal in your fully equipped kitchen. The next morning, you're gently awakened by serene silence, wrapped in the comfort of your home. Your home on the water. Senso brings this dream to life, tailored exactly to your vision. Reach out to us for more information. Or check: [www.sensoboats.nl](http://www.sensoboats.nl)

*Henk Jan Vissia*

## SPECIFICATIONS

<b>Dimensions</b>	13.50 x 4.60 x 0.50 (m)	<b>Builder</b>	Jachtwerf Woudenberg
<b>Built</b>	2025	<b>Cabins</b>	2
<b>Material</b>	Steel	<b>Berths</b>	4
<b>Engine(s)</b>	1 x Yamaha FT60 GETL petrol	<b>Hp/Kw</b>	60.00 (hp), 44.16 (kw)
<b>Asking price</b>	€ 272.000 (VAT Not paid)	<b>Lying</b>	contact Sneek

## CONTACT

<b>Sales office</b>	De Valk Sneek	<b>Telephone</b>	+31 (0)515 42 80 30
<b>Address</b>	Zwolsmanweg 7 8606 KC Sneek NL	<b>E-mail</b>	sneek@devalk.nl

## DISCLAIMER

These particulars are given in good faith as supplied but cannot be guaranteed.



# HOUSEBOAT SENSO 45

## GENERAL

Model	HOUSEBOAT SENSO 45
Type	motor yacht
LOA (m)	13,50
LWL (m)	13,40
Beam (m)	4,60
Draft (m)	0,50
Air draft (m)	3,05
Headroom (m)	2,20
Year built	2025
Builder	Jachtwerf Woudenberg
Country	The Netherlands
Designer	Senso Boats
Displacement (t)	15,5
Ballast (tonnes)	concrete 0,7
CE norm	D
Hull material	steel
Hull colour	antracite gray
Hull thickness (mm)	5
Hull shape	flat bottom
Superstructure material	Insulating Sandwich Foam Core
Superstructure (mm)	100
Deck plate thickness (mm)	5
Rubbing strake	wood Azobé
Deck material	steel
Deck finish	non-skid paint
Superstructure deck finish	paint
Antifouling (year)	2024
Window frame	aluminium
Window material	double glazing
Insulation	foam



# HOUSEBOAT SENSO 45

Fuel tank (litre)	polyethylene 280 L
Level indicator (fuel tank)	Victron
Fuel daytank (litre)	polyethylene 70 L Diesel for heater
Level indicator (daytank)	Victron
Freshwater tank (litre)	polyethylene 1x 250 L Drinking Water; 1x 920 L Utility Water
Level indicator (freshwater)	Victron
Blackwater tank (litre)	250 L
Level indicator (blackwater)	Victron
Blackwater tank extraction	deck extraction + pump
Greywater tank (litre)	Optional
Level indicator (greywater)	Victron (optional)
Outside helm position	hydraulic
Extra info	Drinking water supply with additional carbon filtering
Extra info	Several options possible like Sun deck acces to the roof; Insulated hull, et cetera
Extra info	Hull contains 4 watertight compartments; 2 collision bulkheads

## ACCOMMODATION

Cabins	2
Berths	4
Interior	mahogany
Floor	Durable PVC
Aft deck	Spacious with comfortable seating area
Saloon	Cosy day area with a lot of comfort
Headroom saloon (m)	2,2 m
Heating	diesel ducted hot air Webasto
Air-conditioning	reverse cycle airco Optional: Webasto BlueCool S-series
Sliding door to cockpit	(not on demo boat)
Galley	yes
Countertop	plastic
Sink	GRP



# HOUSEBOAT SENSO 45

Cooker	calor gas 4-burner
Oven	Optional
Extractor	yes
Microwave	Optional
Microwave/oven combi	Optional
Fridge	220V
Freezer	Optional
Wine cooler	Optional
Hot water system	750 W Webasto Isotemp boiler
Water pressure system	electrical
Dishwasher	yes
Hot water tap	yes
Owners cabin	double bed
Bed length (m)	2,0
Wardrobe	hanging/drawers/shelves
Bathroom	separate
Toilet	separate
Toilet system	electric
Wash basin	yes
Shower	yes
Guest cabin 1	Layout upon request
Bed length (m)	2,0
Wardrobe	hanging and drawers
Washing machine	Optional
Dryer	Optional
Sauna	Optional (additional provisions needed)
Extra info	Several layouts possible. Ask us for more info

## MACHINERY

No of engines	1
Make	Yamaha



# HOUSEBOAT SENSO 45

Type	FT60 GETL
HP	60
kW	44.16
Fuel	petrol
Year installed	2024
Maximum speed (kn)	7
Cruising speed (kn)	4,5
Engine cooling system	seawater
Engine controls	bowden cable
Bowthruster	electric Vetus 7.5 kW; 125kgf
Electric bilge pump	yes
Start battery	With dedicated Victron Blue Smart charger
Service battery	Victron 5 kWh Lithium
Bowthruster battery	2x 12V 180Ah Lead-Acid (deep cycle)
Battery monitor	Victron Cerbo GX, including display
Inverter	Optional in addition to Victron Easy Solar-II
Battery charger/inverter	Victron Multiplus II 5kVa
Solar panel	1.6 kw Standard. More is optional
Shorepower	with cable
Insulation transformer	Victron Easy Solar-II GX 5000 VA
Extra info	Ask us about additional options

## NAVIGATION

Depth sounder/log	Raymarine DST800 Transducer with i40 Bidata display
VHF handheld	Standard Horizon HX210E
Wifi antenna	yes
Camera	yes
Navigation lights	yes
Extra info	Use of navigational instruments by waterproof tablet
Extra info	Additional nav. systems possible



## EQUIPMENT

Anchor	Pool
Deck wash	Filtrated water
Sea railing	stainless steel
Lifebuoy	yes
Horn	yes
Fenders	yes
Mooring lines	yes
Fire extinguisher	yes
Extra info	Smart home system + on board WiFi network
Extra info	Temp. sensor in holding (for winterizing) smart home connected
Extra info	2 spud poles up to 2,0 m depth

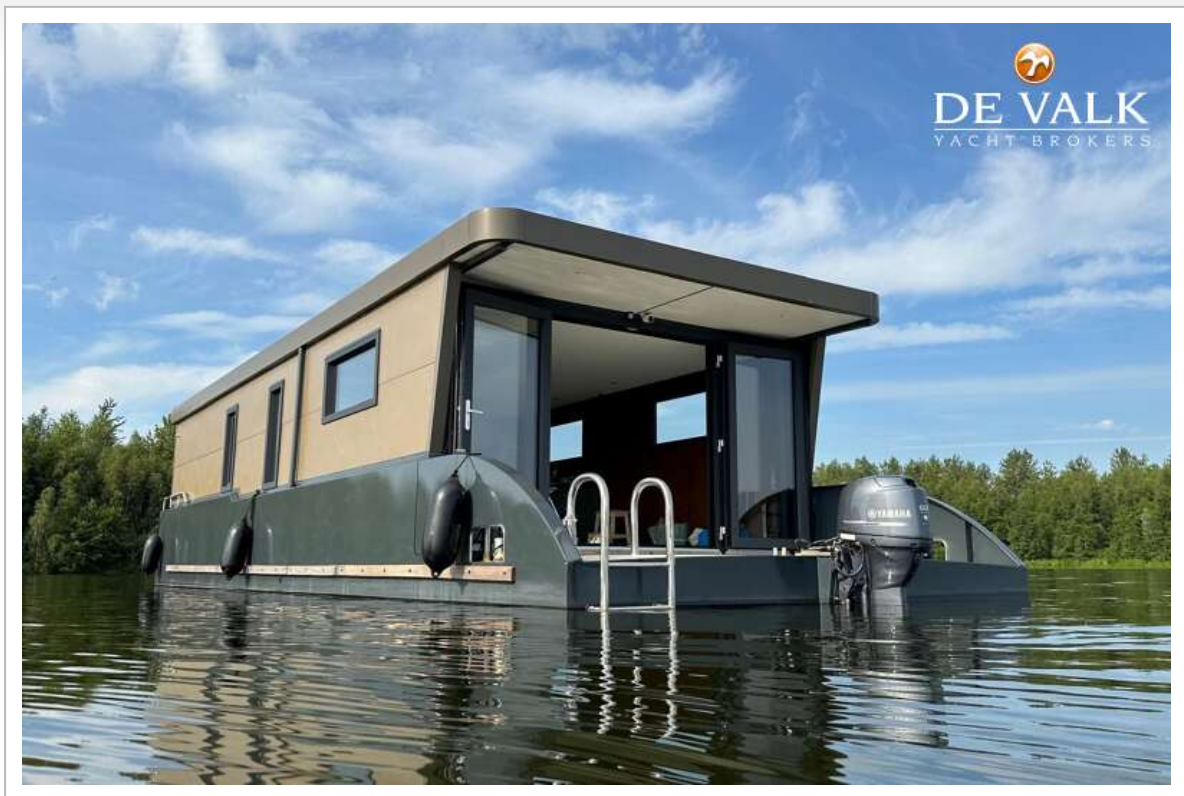


# HOUSEBOAT SENSO 45





# HOUSEBOAT SENSO 45

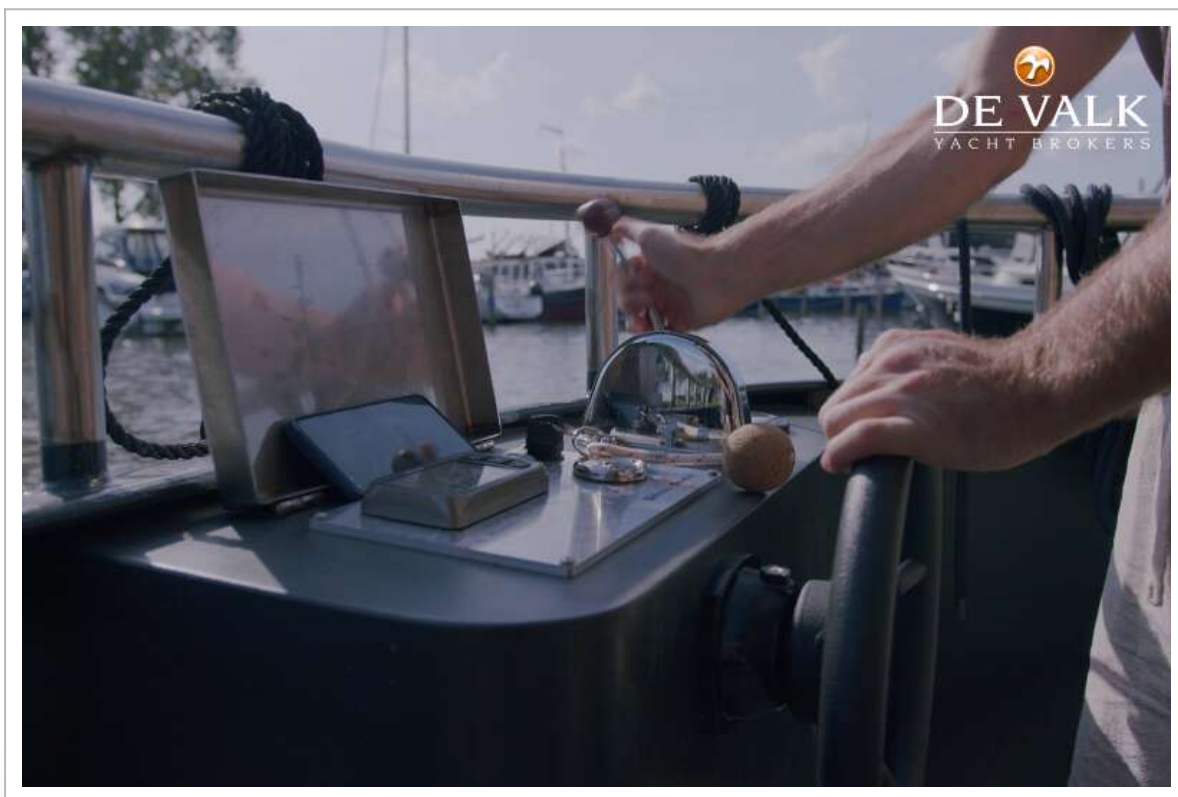


# HOUSEBOAT SENSO 45

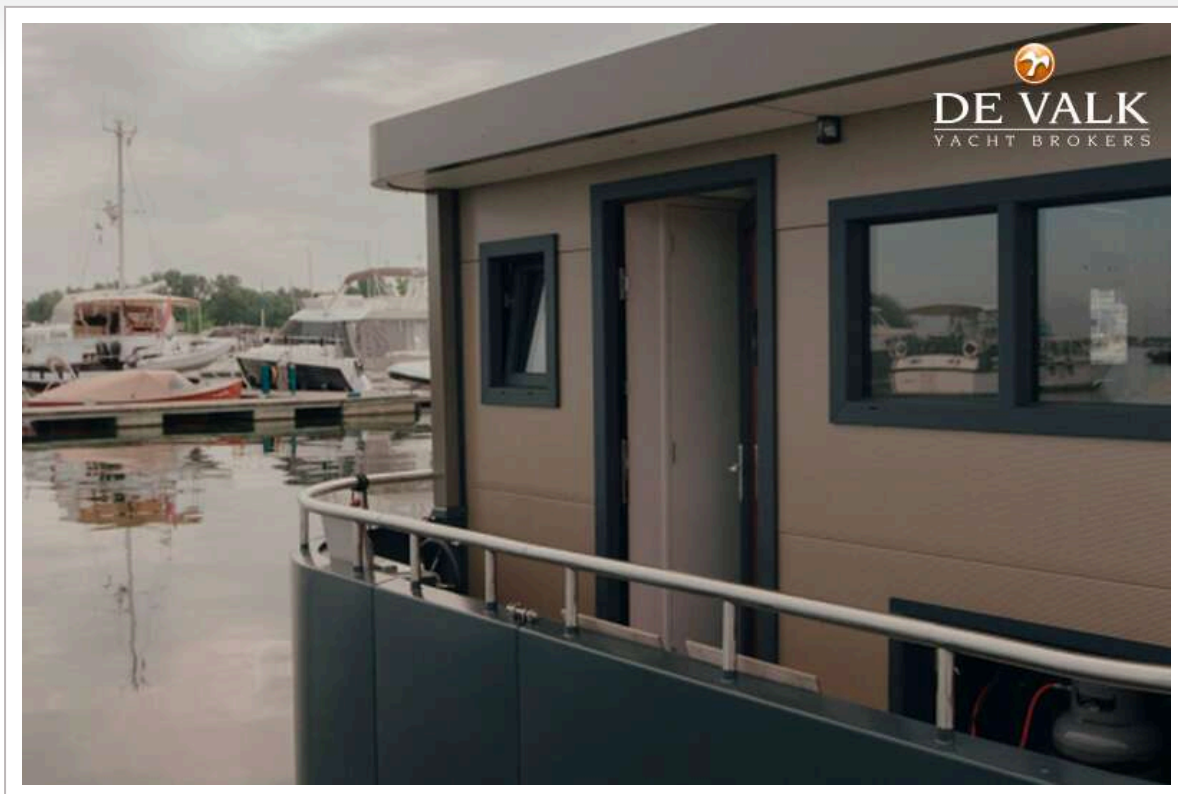




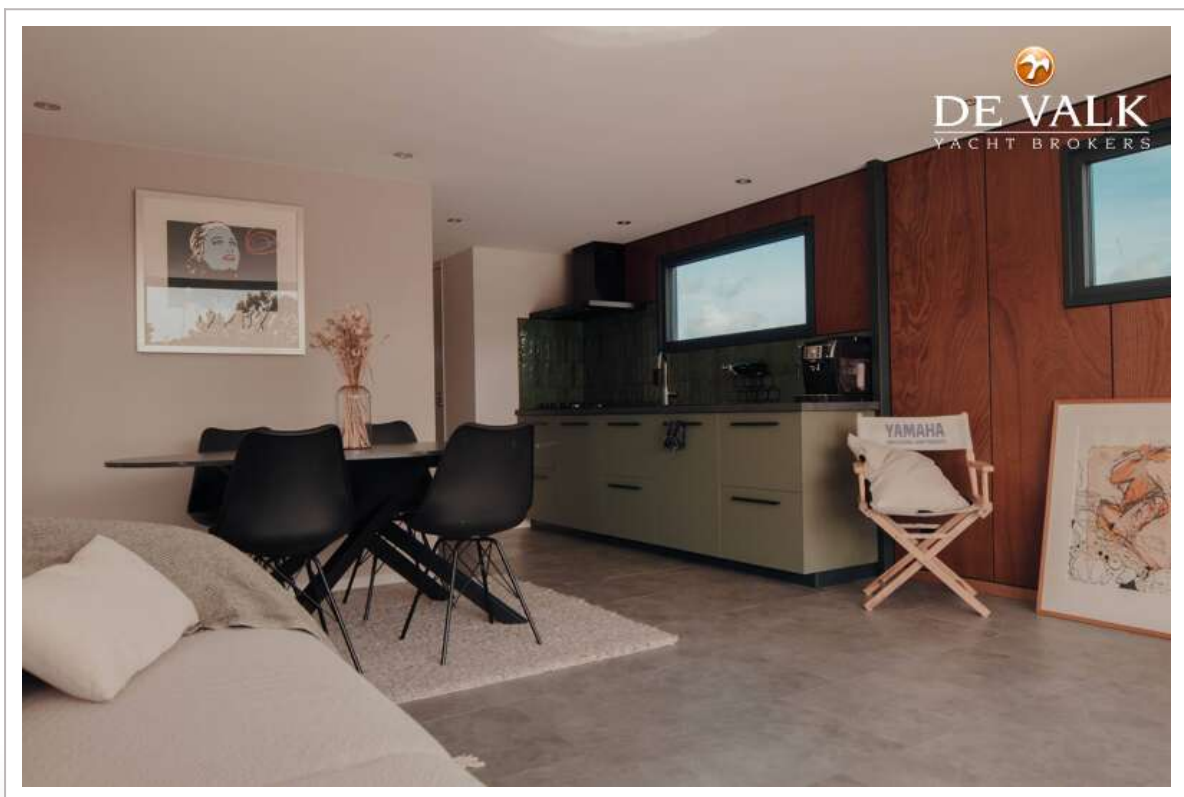
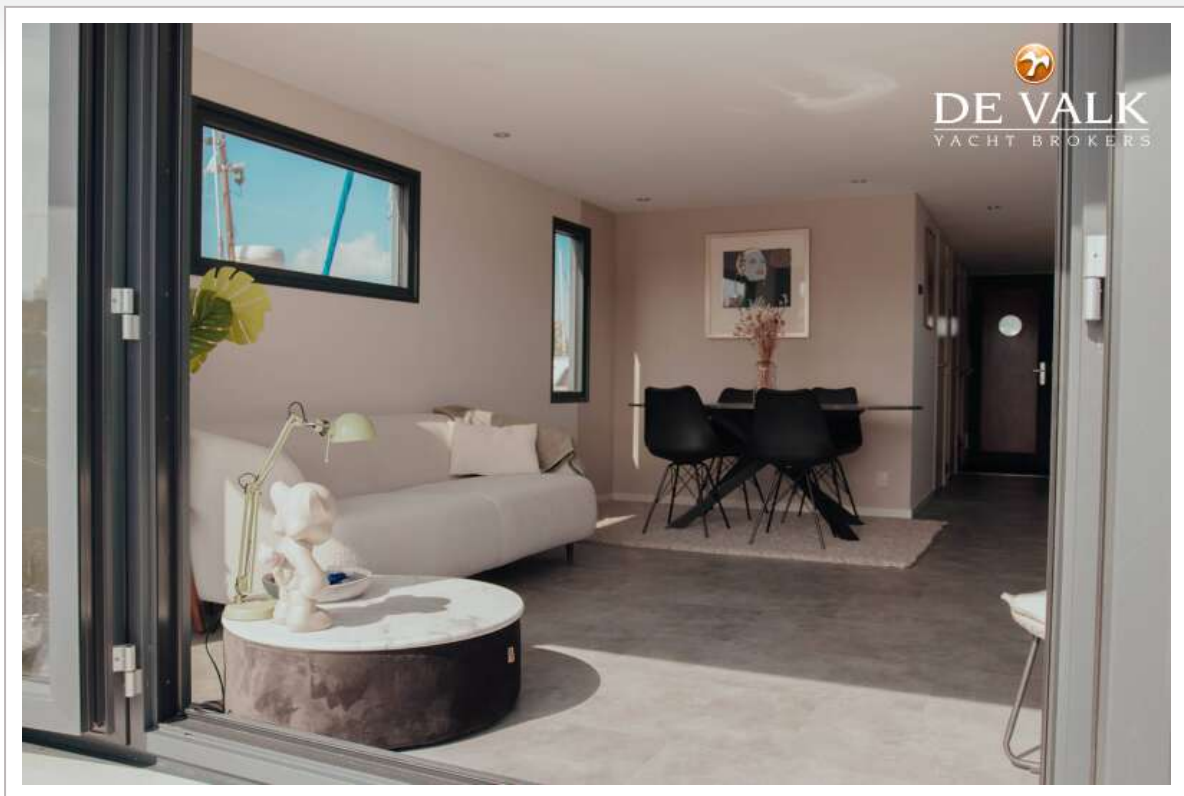
# HOUSEBOAT SENSO 45



# HOUSEBOAT SENSO 45

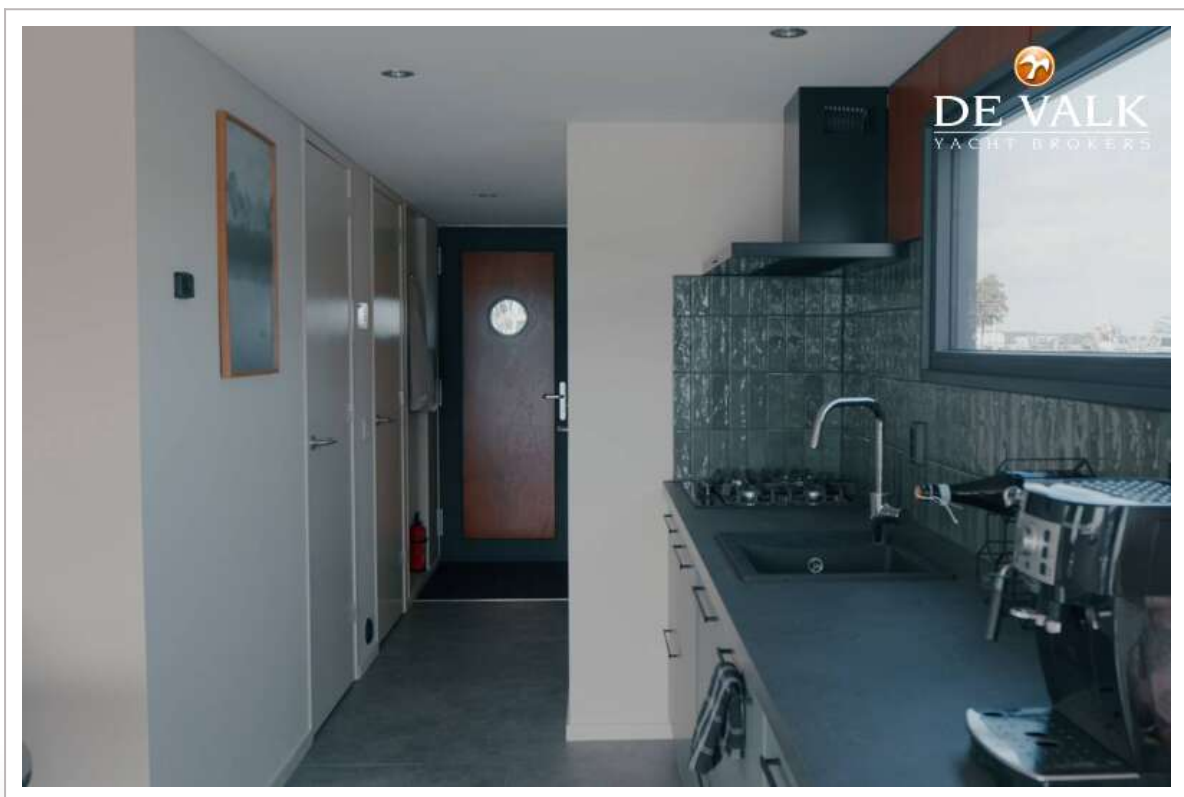


# HOUSEBOAT SENSO 45





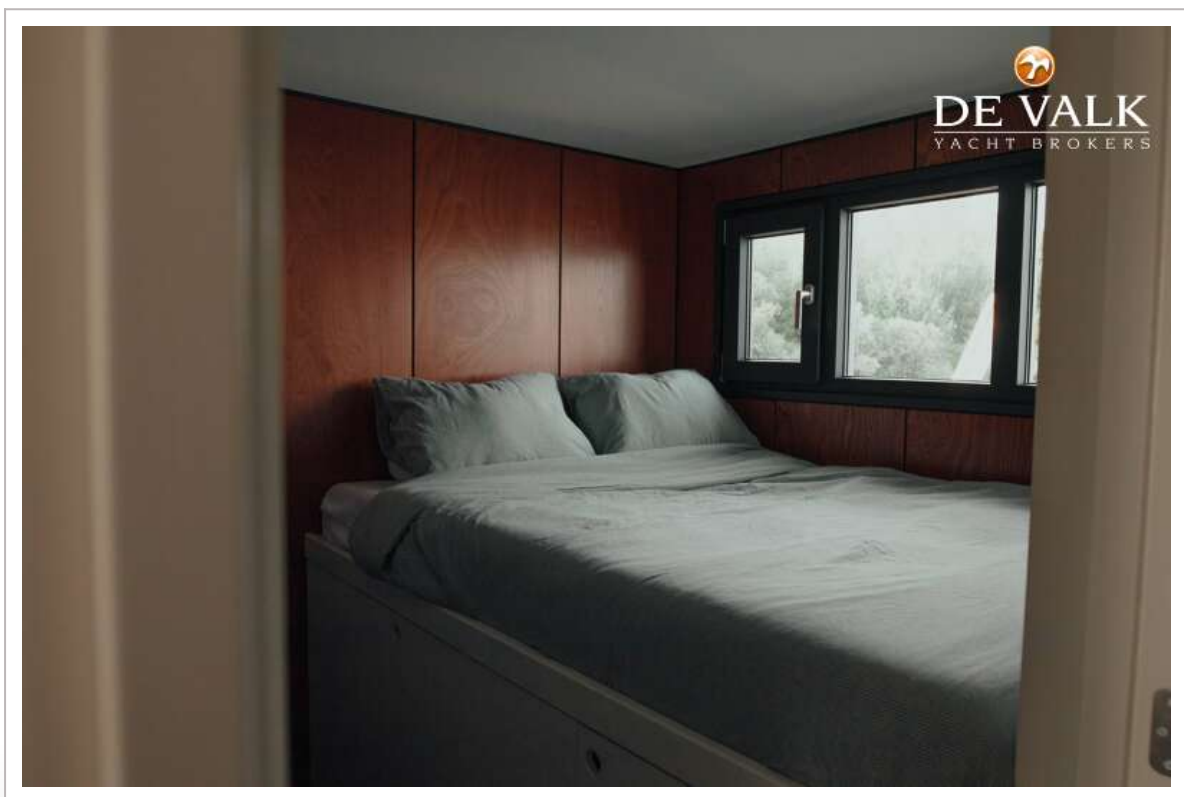
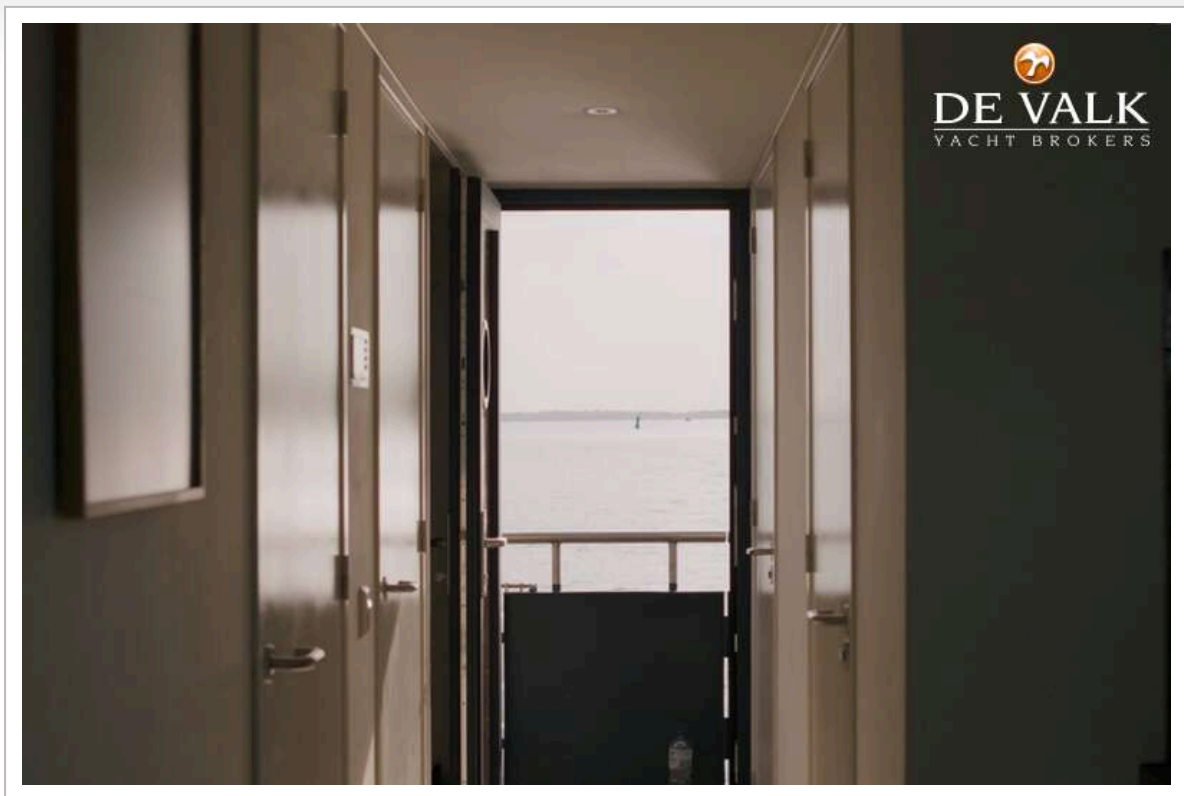
# HOUSEBOAT SENSO 45



# HOUSEBOAT SENSO 45



# HOUSEBOAT SENSO 45





# HOUSEBOAT SENSO 45



\* Floorplan shown without access to the optional sun deck



\* Roof arrangement shown with optional sun deck

