



DE VALK
YACHT BROKERS



ARCONA 50



DE VALK
YACHT BROKERS

BROKERAGE | CHARTER | BERTHS | FINANCE | INSURANCE | YACHT MANAGEMENT

BROKER'S COMMENTS

This Arcona 50 is a superb example of the Arcona 50 range, combining elegant Scandinavian design with high-performance sailing capabilities. The Arcona 50 is equipped with an electric furling genoa, in-boom mainsail furling and electric winches, making handling effortless for short-handed crews. Meticulously maintained, she offers both comfort and speed, with a spacious interior and quality fittings that reflect the excellence of the Arcona 50 design. A rare opportunity to own a well-kept, fast, and stylish yacht.

Hans Visser

SPECIFICATIONS

Dimensions	14.99 x 4.62 x 2.50 (m)	Builder	Arcona Yachts
Built	2024	Cabins	3
Material	GRP	Berths	6
Engine(s)	1 x Yanmar 4JH80 diesel	Hp/Kw	80.00 (hp), 58.88 (kw)
Asking price	€ 1.390.000 (VAT Paid)	Lying	at sales office

CONTACT

Sales office	De Valk Hindeloopen B.V.	Telephone	+31 514 52 40 00
Address	Oosterstrand 1 8713 JS Hindeloopen NL	E-mail	hindeloopen@devalk.nl

DISCLAIMER

These particulars are given in good faith as supplied but cannot be guaranteed.



GENERAL

Model	ARCONA 50
Type	sailing yacht
LOA (m)	14,99
LWL (m)	13,84
Beam (m)	4,62
Draft (m)	2,50
Air draft (m)	24,07
Year built	2024
Builder	Arcona Yachts
Country	Sweden
Designer	Jeppesen & Pons
Displacement (t)	13,9
Ballast (tonnes)	5.8
CE norm	A
Hull material	GRP
Hull colour	white
Hull shape	round-bilged
Keel type	fin keel with bulb
Superstructure material	GRP
Rubbing strake	stainless steel
Deck material	GRP
Deck finish	synthetic teak Flexiteek
Superstructure deck finish	synthetic teak Flexiteek
Cockpit deck finish	synthetic teak Flexiteek
Antifouling (year)	2025/2026
Window material	polycarbonate
Deckhatch	8x Flush
Fuel tank (litre)	385 ltr.
Freshwater tank (litre)	375 ltr.
Blackwater tank (litre)	2x 52 ltr.



Blackwater tank extraction	deck extraction + uw line
Wheel steering	2x carbon wheels & twin rudders
More info on hull	Hull treatment, 2x epoxy Gelshield

ACCOMMODATION

Cabins	3
Berths	6
Interior	mahogany
Layout	with U-shaped galley and U-shaped sofa on port side
Floor	teak and holly
Saloon	yes
Headroom saloon (m)	1.95 / 1.99 mtr
Heating	diesel ducted hot air Eberspächer D6
Navigation center	yes
Chart table	yes
Aft Cabin	2x
Galley	yes
Countertop	corian
Sink	stainless steel double
Cooker	calor gas GN Espace OceanChef 3
Oven	In cooker
Gas alarm	yes
Fridge	1x Isotherm drawer fridge 1x Isotherm top loader
Hot water system	220V + engine 40 ltr.
Water pressure system	electrical
Owners cabin	double bed headroom 1.90 mtr. box-spring mattress with topper
Bed length (m)	2.00 x 1.60 mtr.
Wardrobe	hanging and shelves
Bathroom	en suite
Toilet	Tecma



Toilet system	electric
Wash basin	yes
Shower	yes
Guest cabin 1	twin single including infills with cushions to convert into a double bed.
Bed length (m)	2.00 x 0.70 mtr.
Wardrobe	hanging and shelves
Guest cabin 2	twin single including infills with cushions to convert into a double bed.
Bed length (m)	2.00 x 0.70 mtr.
Wardrobe	hanging and shelves
Bathroom	shared
Toilet	Tecma
Toilet system	electric
Wash basin	yes
Shower	yes
Extra info	in both aft cabins: box-spring mattress

MACHINERY

No of engines	1
Make	Yanmar
Type	4JH80
HP	80
kW	58.88
Fuel	diesel
Year installed	2024
Engine hours	172
Engine cooling system	freshwater heat exchanger
Drive	sail-drive
Saildrive seal	2024
Engine controls	electrical Yanmar



Bowthruster	electric retractable SidePower remote control, soft-start + docking
Sternthruster	electric retractable SidePower remote control, soft-start + docking
Exhaust	watercooled
Propeller type	feathering Flex-o-fold
Propeller blades	3
Manual bilge pump	yes
Electric bilge pump	12 / 24 and 220V
Electrical installation	12 & 24 V DC and 220 V AC
Start battery	1x 12v - 75Ah
Service battery	3x Mastervolt MLI Ultra Lithiom 24v - 230Ah totaal 690 AH
Bowthruster battery	2x Mastervolt AGM 12V - 130Ah
Sternthruster battery	On service package
Battery monitor	Mastervolt EasyView 5 & CZone
Battery charger/inverter	Mastervolt Mass Combi Pro 24/3500 - 100
Shorepower	with cable
Insulation transformer	Mastervolt Mass GI 3.5
Extra info	Alternator 12V/125 A - 24V/110 A

NAVIGATION

Compass	2x Silva
Multi control display	Data from: 4 x B&G Triton ² multifunctioneel display
Depth sounder	Data from: 4 x B&G Triton ² multifunctioneel display
Log	Data from: 4 x B&G Triton ² multifunctioneel display
VHF	B&G V60-B
VHF handheld	B&G H60
Autopilot	With wireless remote control
Radar	B&G Halo 20+ on mast bracket
Radar/GPS/plotter	2x B&G Zeus® S 12 at both helms 1x B&G Zeus® S 9 inside.
Electronic chart(s)	yes
Navigation lights	Tricolour masthead light and anchorlight



EQUIPMENT

Sprayhood	yes
Bimini	3 pcs hinged stainless steel frames with canvas
Cockpit table	2x with covers
Bathing platform	yes
Boarding ladder	stainless steel
Deck shower	on bathing platform
Anchor	Delta Stainless steel 25 kg
Anchor chain	75 mtr. x 10mm
Chain counter	Interfaced with B&G
Windlass	electrical Quick
Sea railing	yes
Grab rail (superstructure)	stainless steel
Railing side opening gates	yes
Pushpit	yes
Pulpit	yes
Life raft	container Plastimo Transocean
Life raft (pers)	8
Last life raft survey	2024
Safety lines on deck	Jackstays
TV	32' Samsung
Radio	Fusion 3 MS RA670
Cockpit speakers	Fusion
Speakers in salon	Fusion
Extra info	Downlights in spreader per pair

RIGGING

Rigging	yes
Standing rigging	Rod
Brand mast	John mast
Material mast	aluminium Black



Spreaders	3 pair
Keel stepped mast	yes
Mainsail	UK de Vries Sails 86 m²
Mainsail cover	yes
Cutterstay	in Dynema incl. Wichard babbystay adjuster with ratchet and reinforcement in deck and Wichard padeye.
Jib	yes
Genoa	UK de Vries Sails 65 m² 110%
Genoa furler	Harken MKIV 3U
Code Zero	UK de Vries Sails 128m²
Reefing System	main in-boom furling
Backstay adjuster	hydraulic backstay in spectra
Boomvang	gasspring boom with light
Primary sheet winch	2x Harken 60 Electric - 2 speed
Secondary sheet winch	2x Harken 60 Electric - 2 speed
Gennaker pole	Bow sprit carbon for Code-Zero
Extra info	Harken electric main traveller main and jib halyard Dyneema
Extra info	German mainsheet system with single block under deck



ARCONA 50



ARCONA 50



ARCONA 50



ARCONA 50



ARCONA 50



ARCONA 50



ARCONA 50



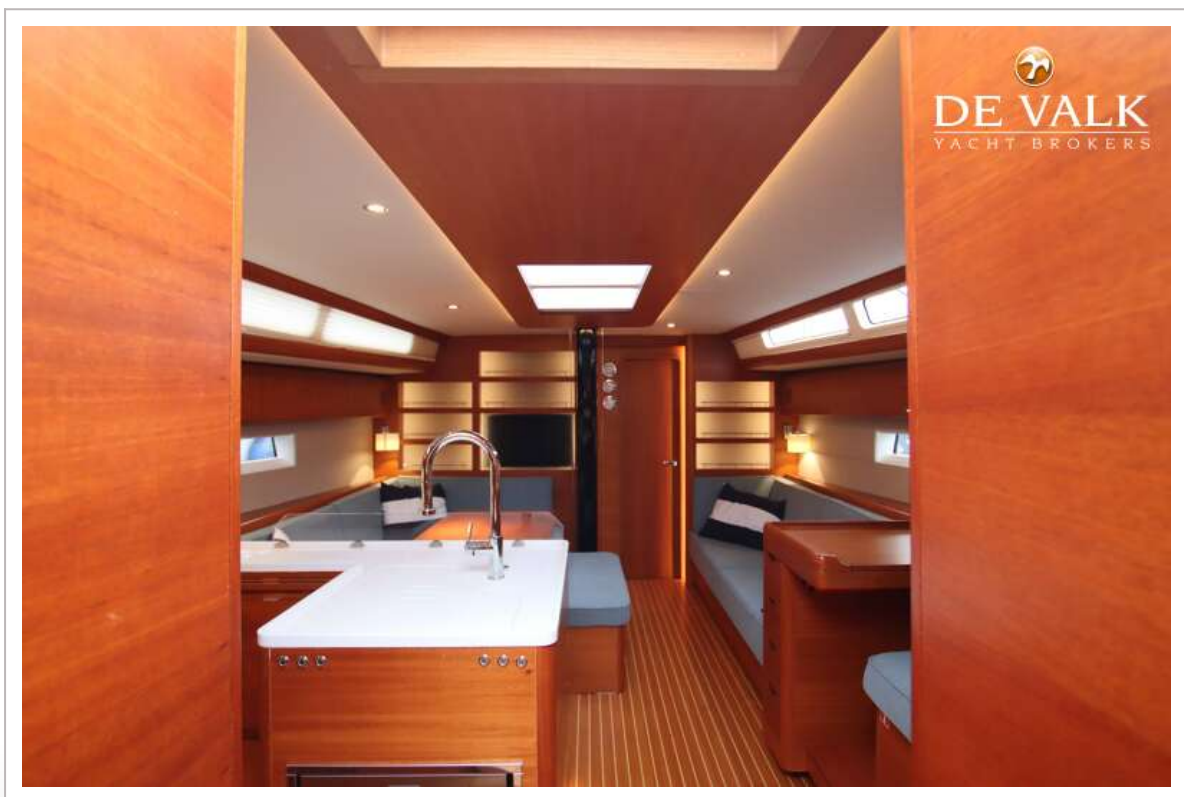
ARCONA 50



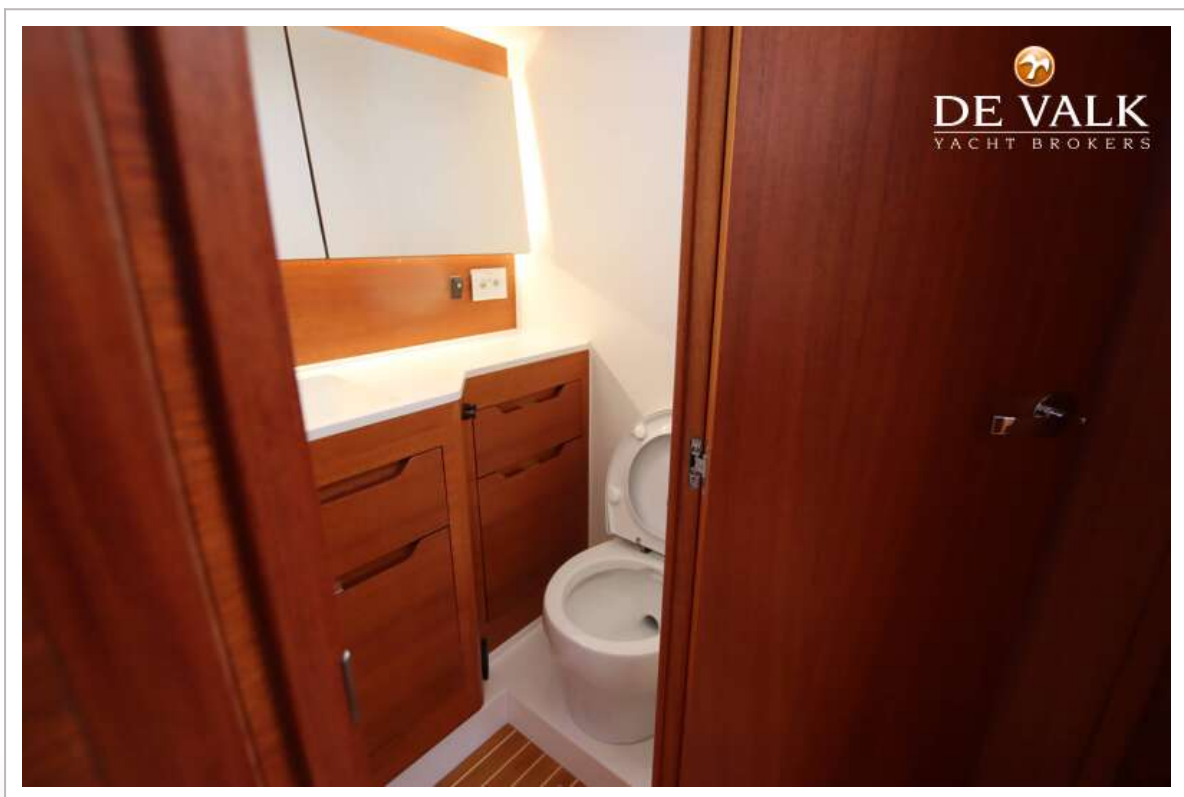
ARCONA 50



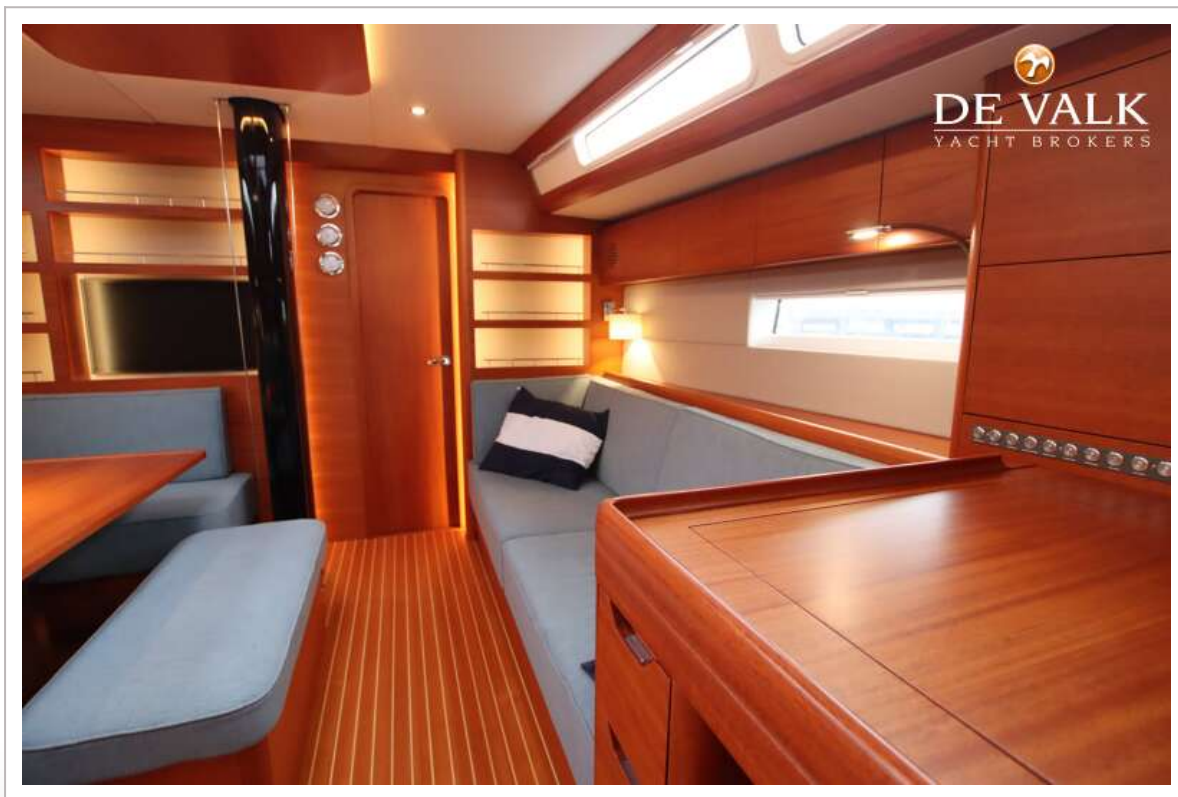
ARCONA 50



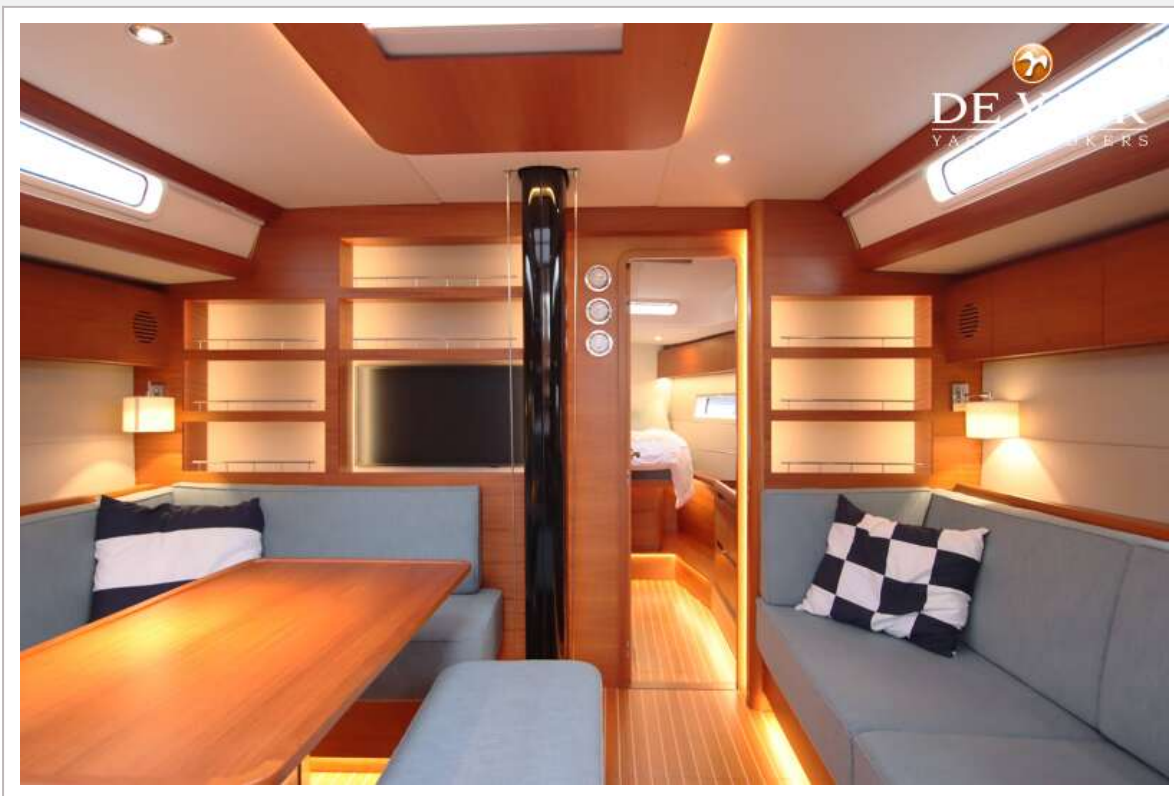
ARCONA 50



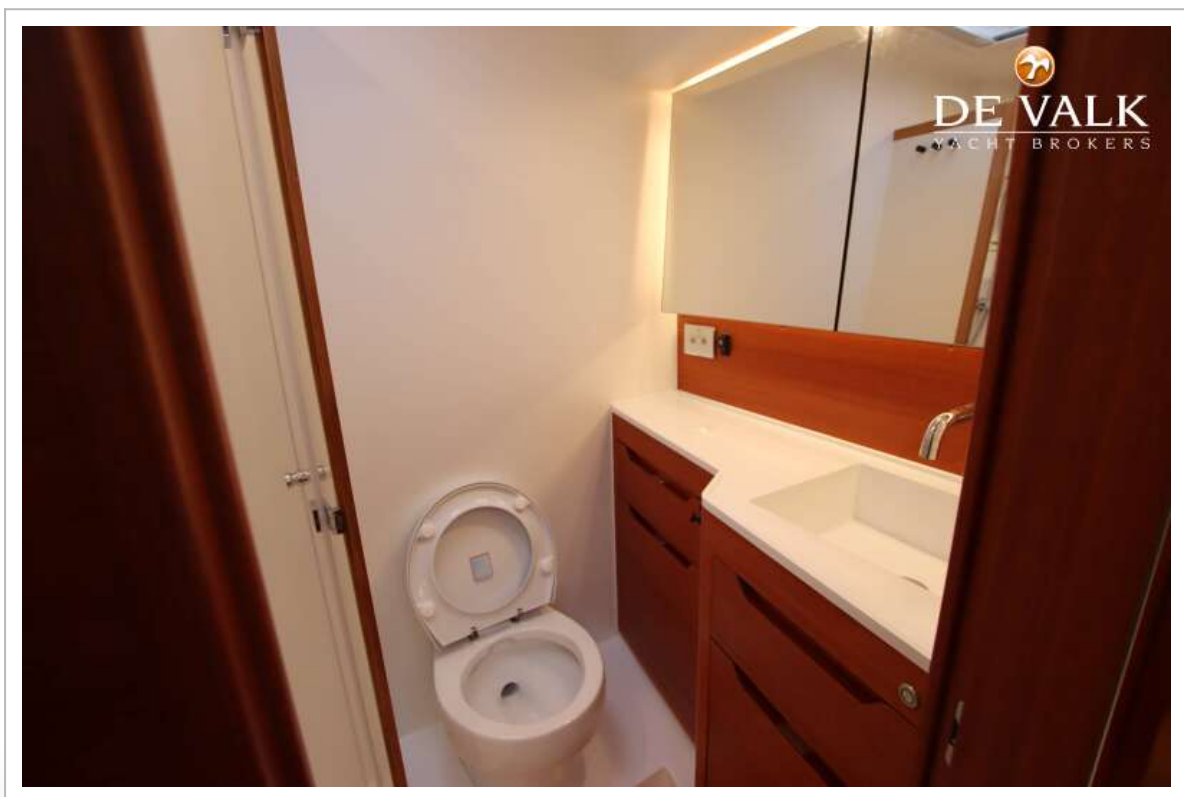
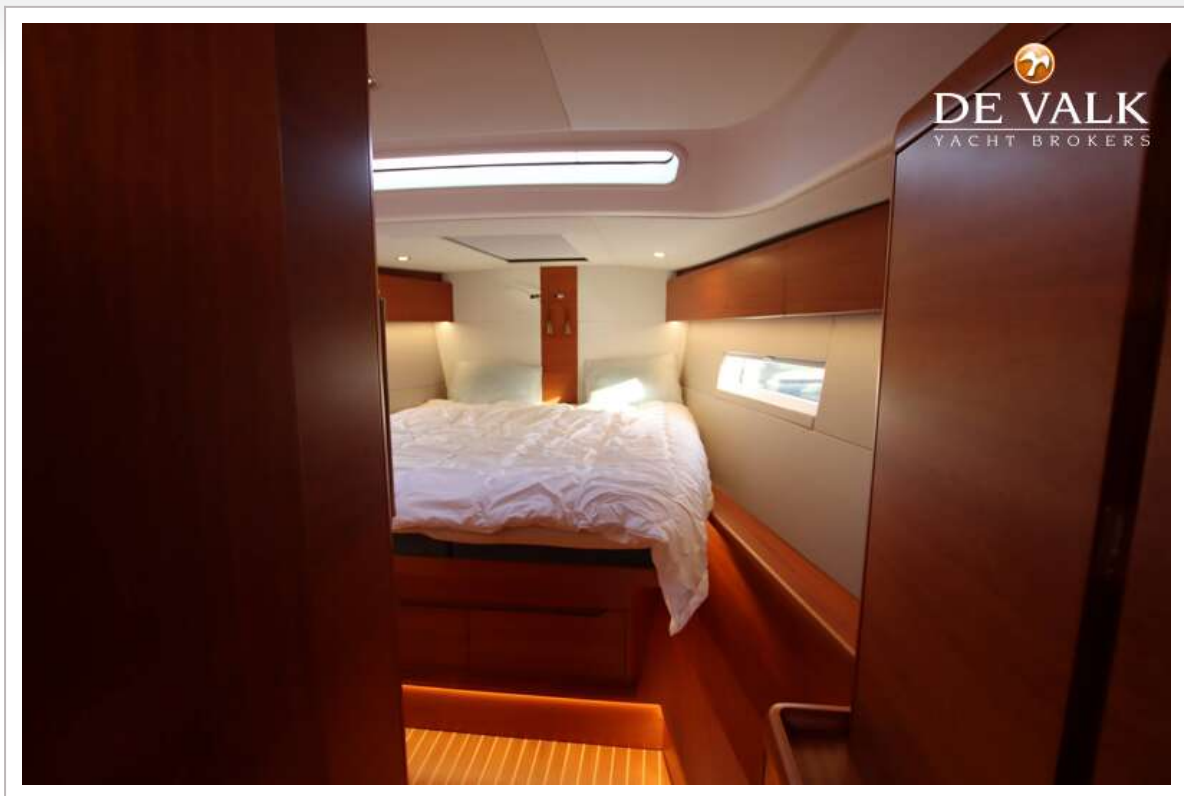
ARCONA 50



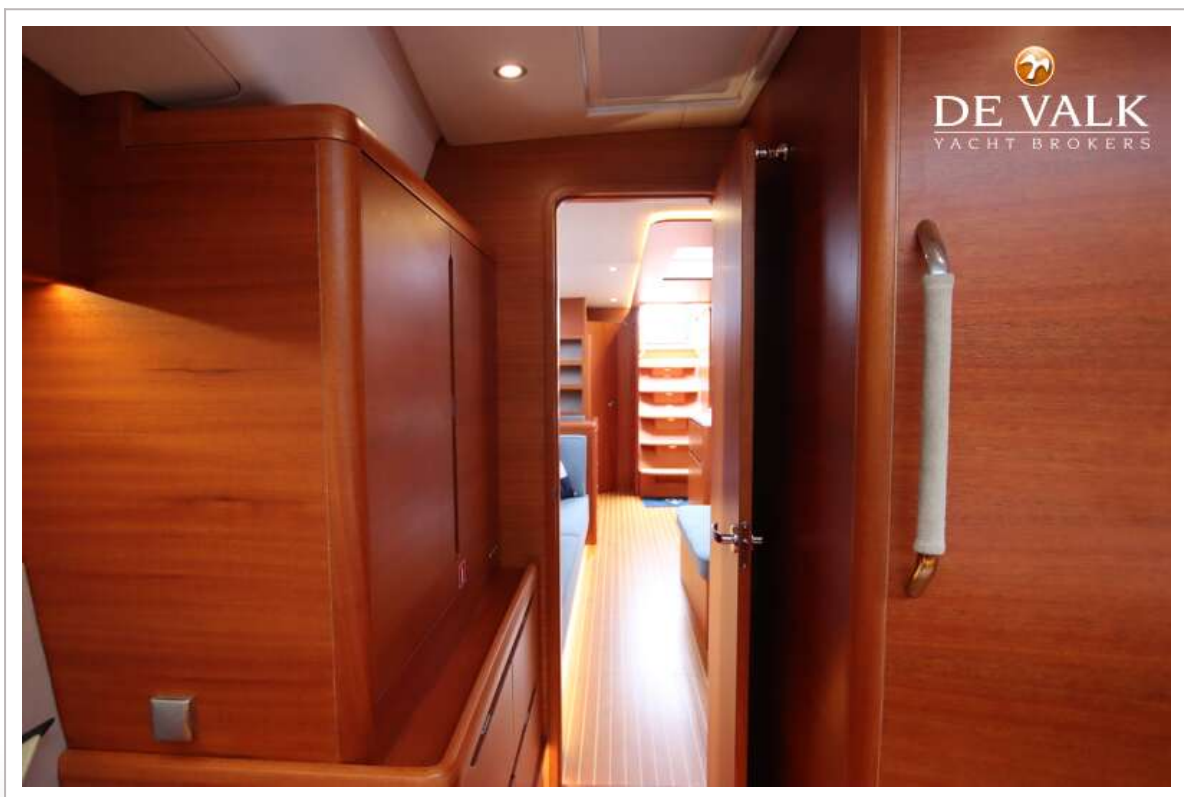
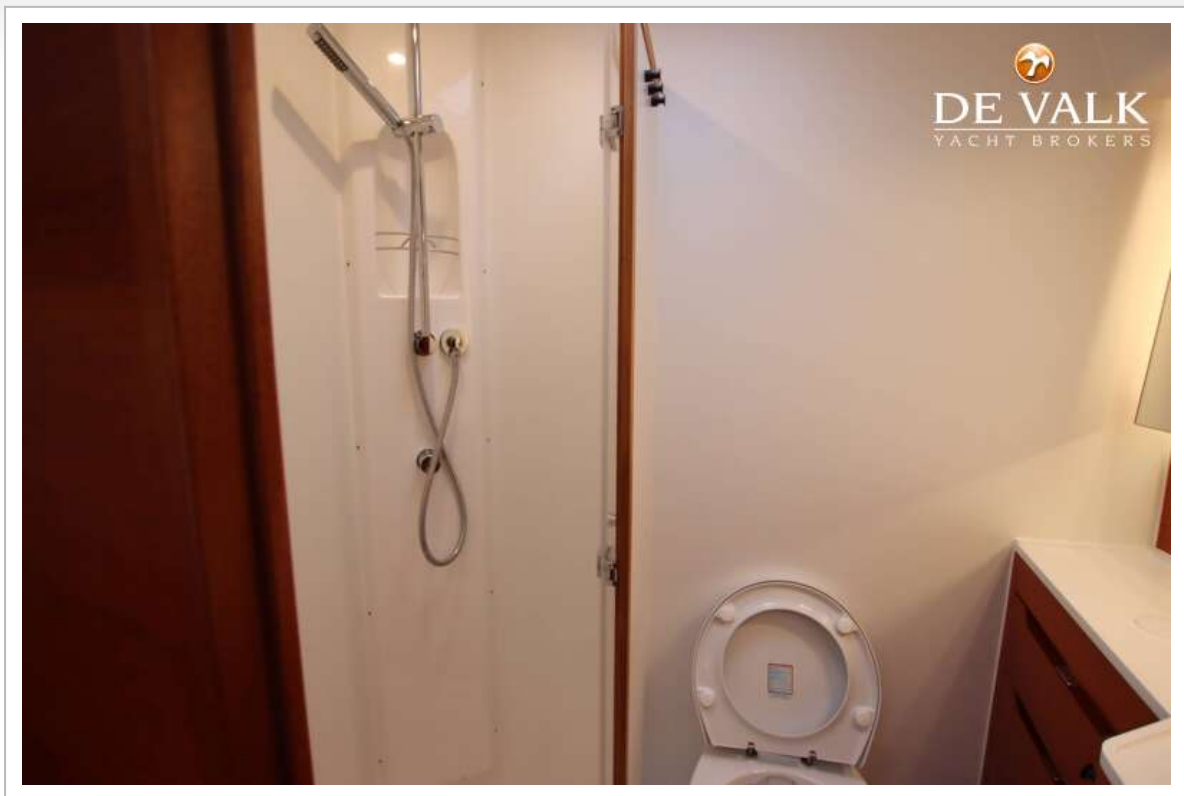
ARCONA 50



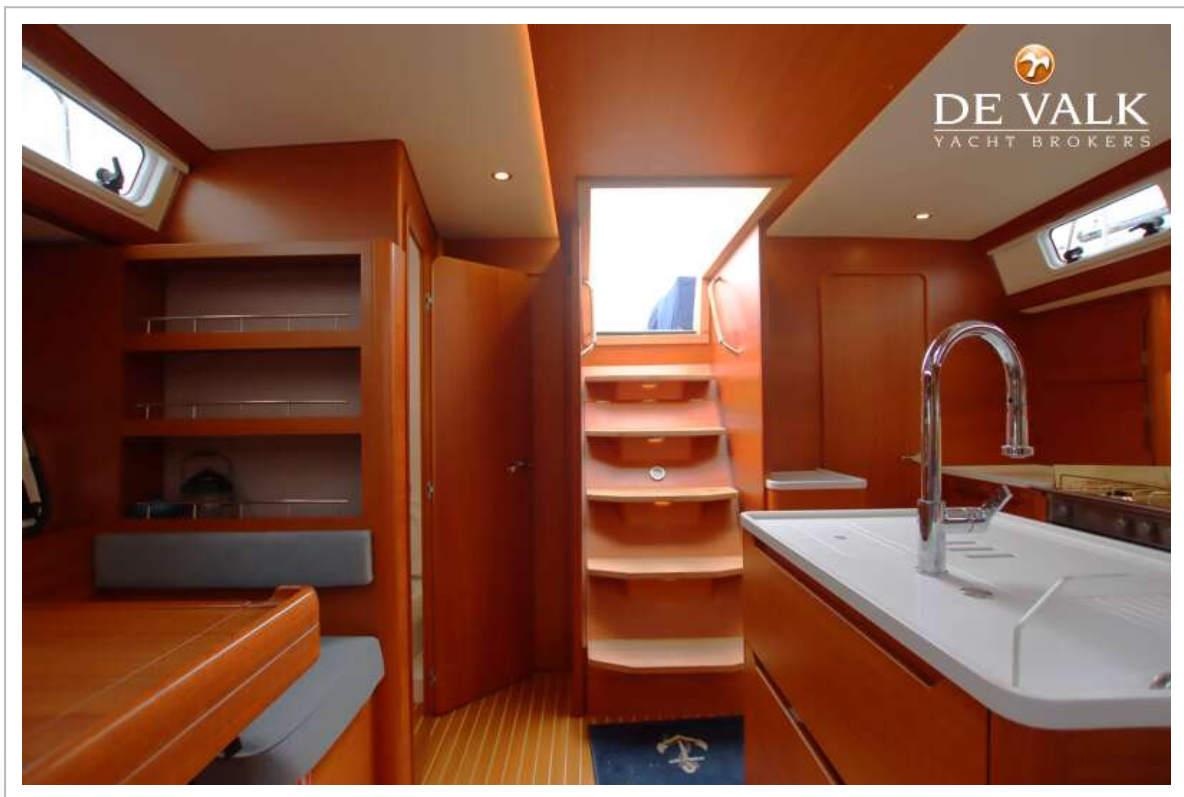
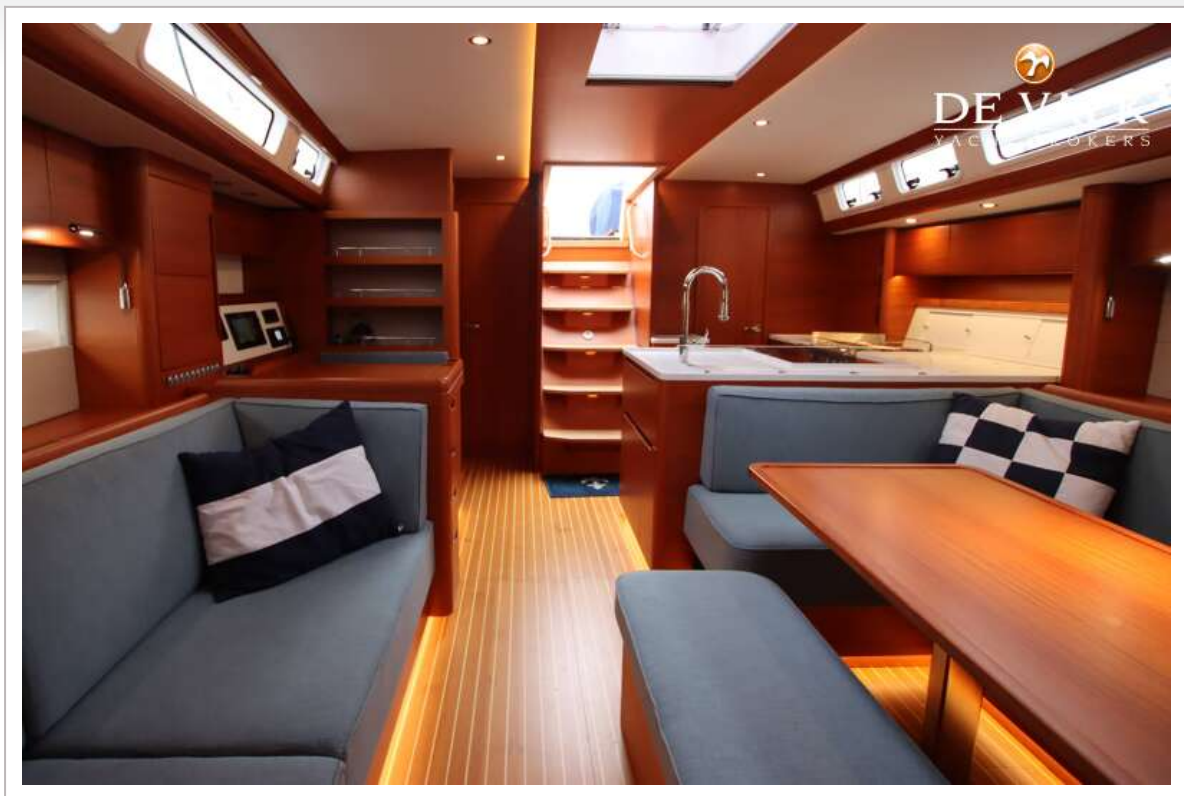
ARCONA 50



ARCONA 50



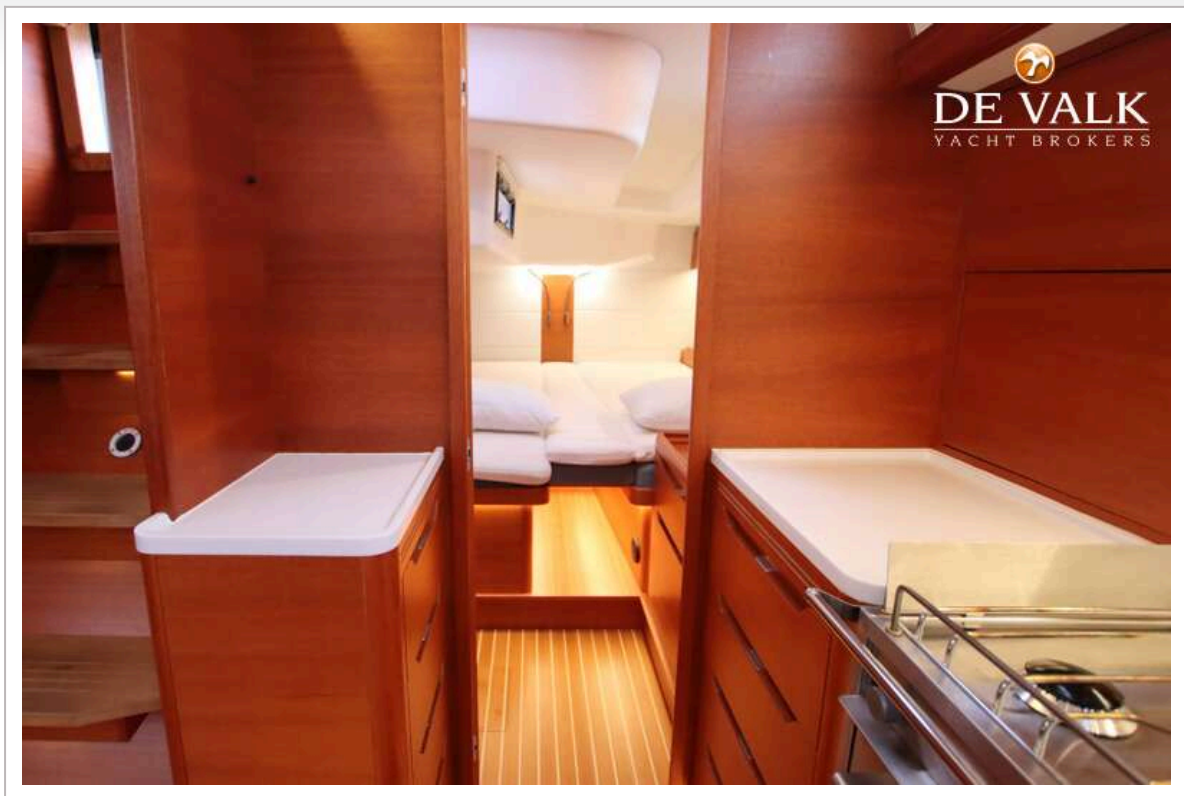
ARCONA 50



ARCONA 50



ARCONA 50



ARCONA 50



ARCONA 50

