



DE VALK  
YACHT BROKERS

**PRICE NEGOTIABLE**



BAGLIETTO 120



DE VALK  
YACHT BROKERS

# BAGLIETTO 120

## BROKER'S COMMENTS

Yacht designed by the famous architect Stefano Righini & built by the renowned Italian shipbuilder Baglietto. She can accommodate up to 12 guests in 6 spacious & elegant cabins with a layout comprising of a master suite, one double cabin, two twin cabins and two single cabins. The bed configuration includes 2 doubles, 6 singles and 4 pullmans. She is also capable of carrying up to 6 crew. Built with an aluminium hull she comfortably cruises at 17 knots, reaches max speed of 30 knots & has a range of up to 772 Nm from her 25,000 Lt Fuel tank at 24kt speed.

*Sofia Iliia-Salvanou*

## SPECIFICATIONS

<b>Dimensions</b>	37.00 x 7.60 x 2.35 (m)	<b>Builder</b>	BAGLIETTO
<b>Built</b>	1987	<b>Cabins</b>	6
<b>Material</b>	Aluminium	<b>Berths</b>	12
<b>Engine(s)</b>	2 x MTU diesel	<b>Hp/Kw</b>	2 x 2,380.00 (hp), 1,751.68 (kw)
<b>Asking price</b>	€ 1.300.000 (VAT Not paid)	<b>Lying</b>	elsewhere / Not at sales office

## CONTACT

<b>Sales office</b>	De Valk Corfu	<b>Telephone</b>	(+30) 266 111 8095
<b>Address</b>	New Port of Corfu, near Gouvia Marina 490 83 Corfu Greece	<b>E-mail</b>	corfu@devalk.nl

## DISCLAIMER

These particulars are given in good faith as supplied but cannot be guaranteed.



## GENERAL

Model	BAGLIETTO 120
Type	motor yacht
LOA (m)	37,00
Beam (m)	7,60
Draft (m)	2,35
Year built	1987
Builder	BAGLIETTO
Country	Italy
Designer	Stefano Righini
Gross tonnage	149 T
Hull material	aluminium
Hull colour	white
Superstructure material	aluminium
Deck material	aluminium
Deck finish	teak
Superstructure deck finish	teak
Cockpit deck finish	teak
Antifouling (year)	2023
Deckhatch	yes
Portholes	yes
Flybridge	yes
Radar arch	yes
Fuel tank (litre)	25.000
Level indicator (fuel tank)	yes
Freshwater tank (litre)	yes
Level indicator (freshwater)	yes
Blackwater tank (litre)	yes
Level indicator (blackwater)	yes
Greywater tank (litre)	yes
Level indicator (greywater)	yes



Wheel steering	yes
Inside helm position	yes
Flybridge helm position	yes
Emergency tiller	yes
Extra info	Refitted 2022

## ACCOMMODATION

Cabins	6
Berths	12
Crew cabin	yes
Crew berths	6
Aft deck	yes
Saloon	yes
Heating	yes
Air-conditioning	yes
Navigation center	yes
Chart table	yes
Dining room	Table for 16 guests
Dinette	yes
Sliding door to aft deck	yes
Galley	yes
Countertop	yes
Sink	yes
Cooker	yes
Oven	yes
Extractor	yes
Microwave	yes
Fridge	X 2 (WALK IN TYPE)
Freezer	yes
Wine cooler	yes
Hot water system	yes



Water pressure system	yes
Dishwasher	yes
Ice maker	X 2
Coffee maker	yes
Crockery	yes
Owners cabin	double bed
Wardrobe	yes
Bathroom	en suite
Toilet	en suite
Toilet system	electric
Wash basin	in the bathroom
Shower	en suite
Guest cabin 1	double bed
Wardrobe	yes
Bathroom	en suite
Toilet	en suite
Toilet system	electric
Wash basin	in the bathroom
Shower	en suite
Guest cabin 2	twin single
Wardrobe	yes
Bathroom	en suite
Toilet	en suite
Toilet system	electric
Wash basin	in the bathroom
Shower	en suite
Guest cabin 3	twin single
Wardrobe	yes
Bathroom	ensuite
Toilet	en suite
Toilet system	electric
Wash basin	in the bathroom



Shower	en suite
Guest cabin 4	single bed
Wardrobe	yes
Bathroom	ensuite
Toilet	en suite
Toilet system	electric
Wash basin	in the bathroom
Shower	en suite
Crew cabin(s)	6 berthes
Bathroom (crew)	yes
Toilet (crew)	yes
Toilet system	electric
Wash basin	yes
Shower (crew)	yes
Washing machine	yes
Dryer	yes
Ironing facilities	yes
Flybridge	yes

## MACHINERY

No of engines	2
Make	MTU
HP	2380
kW	1751.68
Fuel	diesel
Maximum speed (kn)	22
Cruising speed (kn)	17
Consumption (l/hr)	400
Drive	shaft
Shaft seal	yes
Bowthruster	yes



Propeller type	fixed
Propeller shaft material	stainless steel
Electric bilge pump	yes
Bilge alarm	yes
Electrical installation	yes
Generator	45 Kw
Generator 2	45 Kw plus Generator Nr 3: ONAN 2 Kw
Batteries	yes
Start battery	yes
Service battery	yes
Generator battery	yes
Battery monitor	yes
Battery charger	yes
Inverter	yes
Shorepower	yes
Watermaker	150 Lt/h

## NAVIGATION

Compass	yes
Depth sounder	yes
VHF	yes
VHF handheld	yes
Autopilot	yes
Rudder angle indicator	yes
Radar	yes
GPS	yes
Plotter	yes
Wifi antenna	yes
AIS receiver	yes
AIS transponder	yes
EPIRB	yes



Navigation lights yes

## EQUIPMENT

Bimini yes

Cockpit cushions yes

Cockpit table yes

Cockpit chairs yes

Bathing platform yes

Boarding ladder yes

Gangway yes

Anchor yes

Anchor chain yes

Chain counter yes

Windlass yes

Dinghy yes

Outboard yes

Life raft yes

Life raft (pers) 14

Lifejackets yes

Lifebuoy yes

Fenders yes

Mooring lines yes

Spare parts yes

Tools yes

TV receiver yes

Surround Sound System yes

Fire extinguisher yes

Extinguisher in engine room yes





BAGLIETTO 120

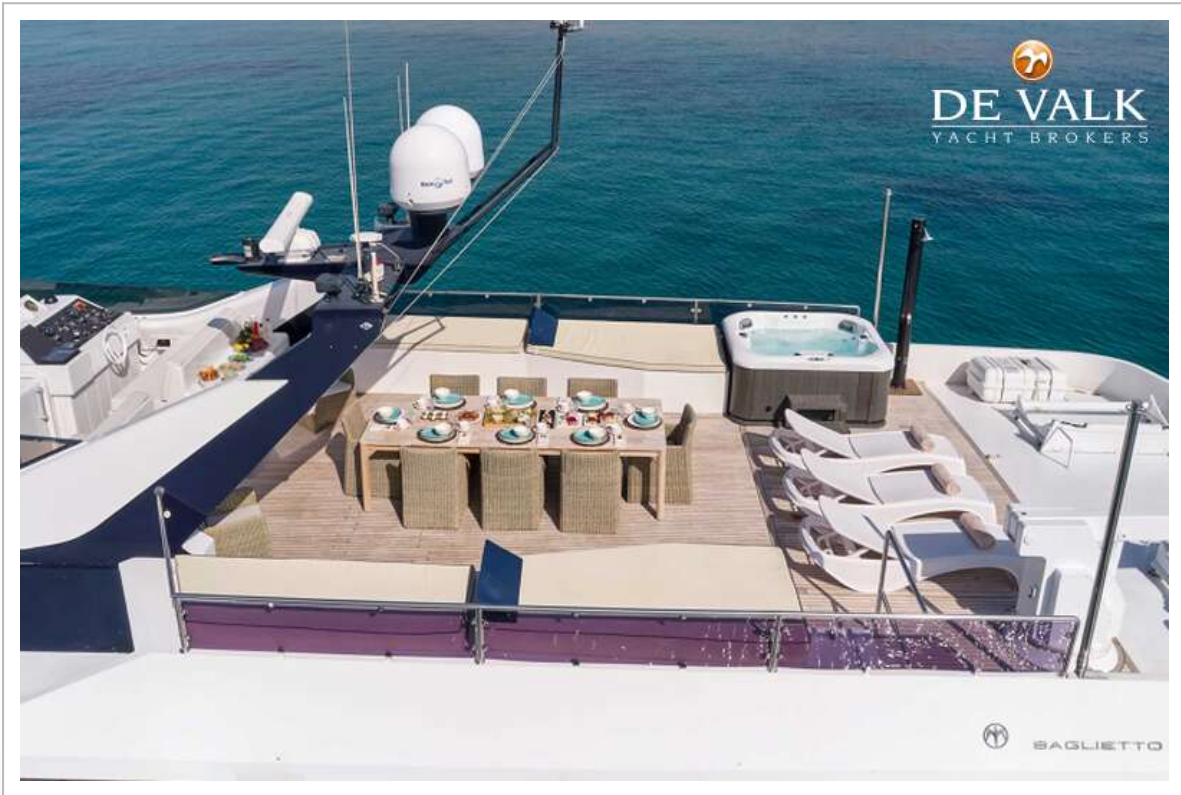
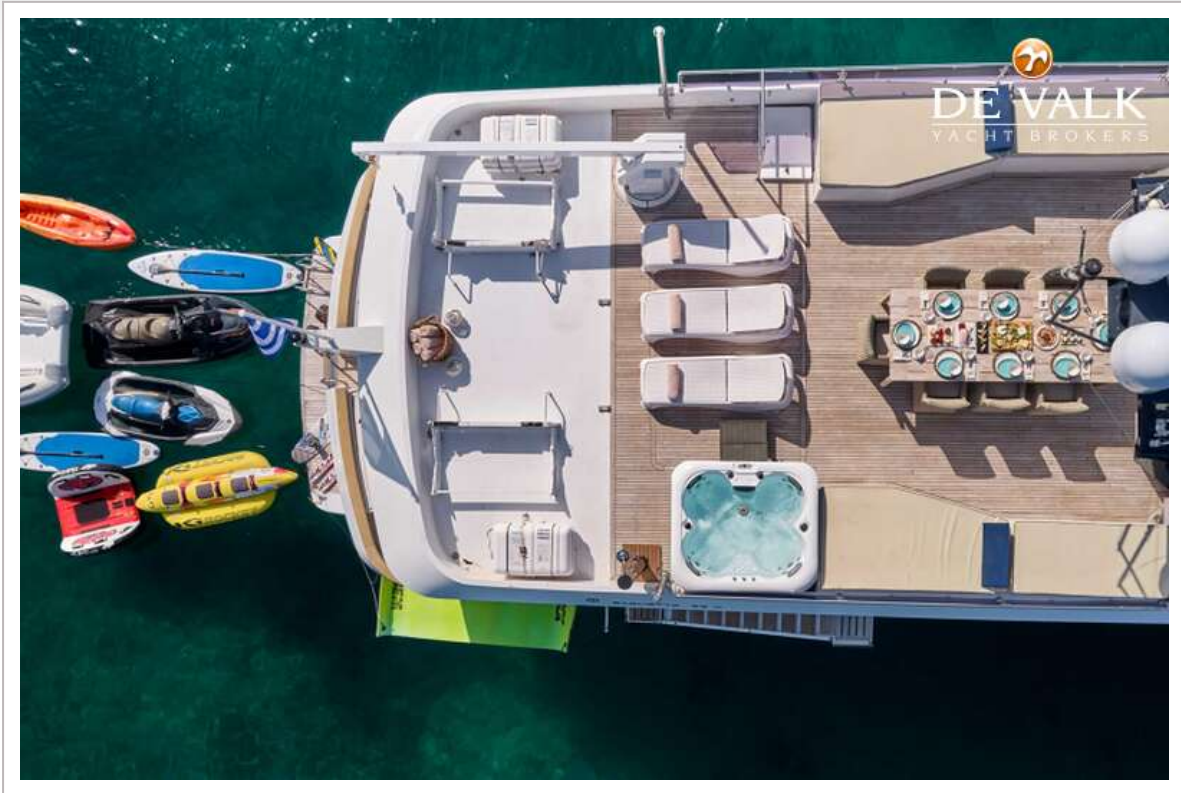




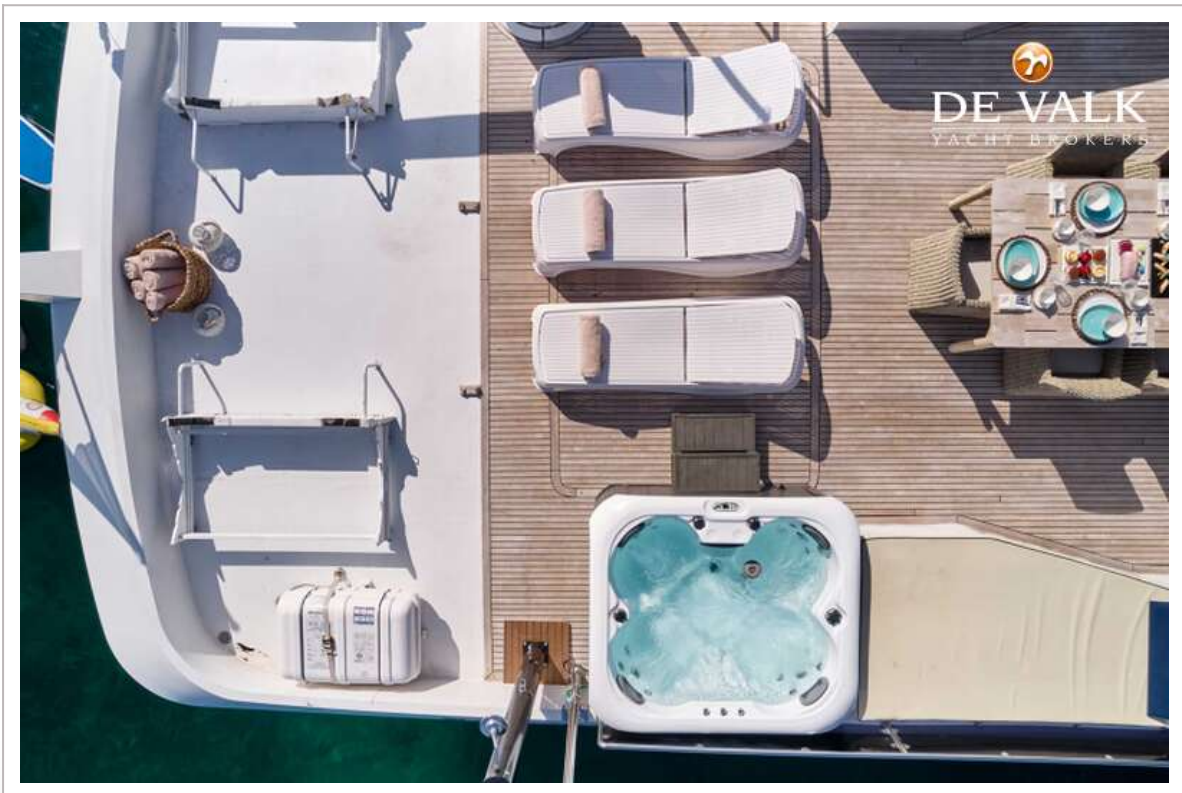
# BAGLIETTO 120



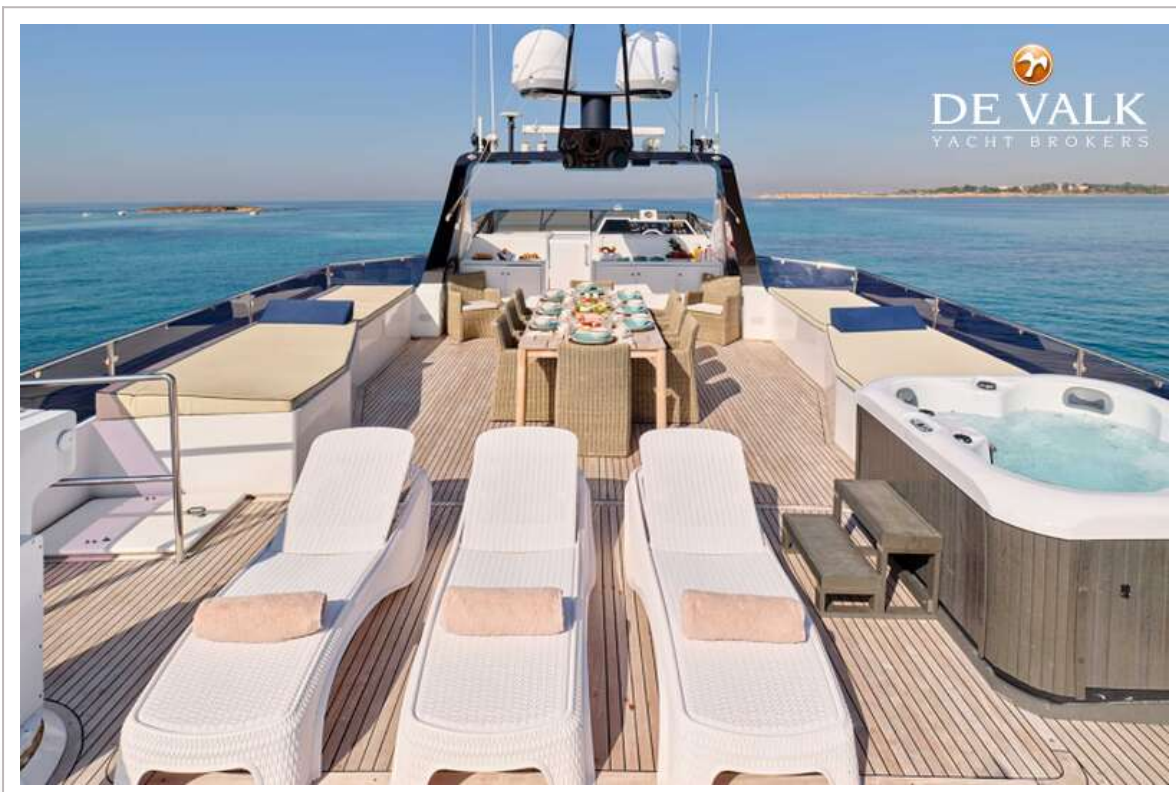
BAGLIETTO 120



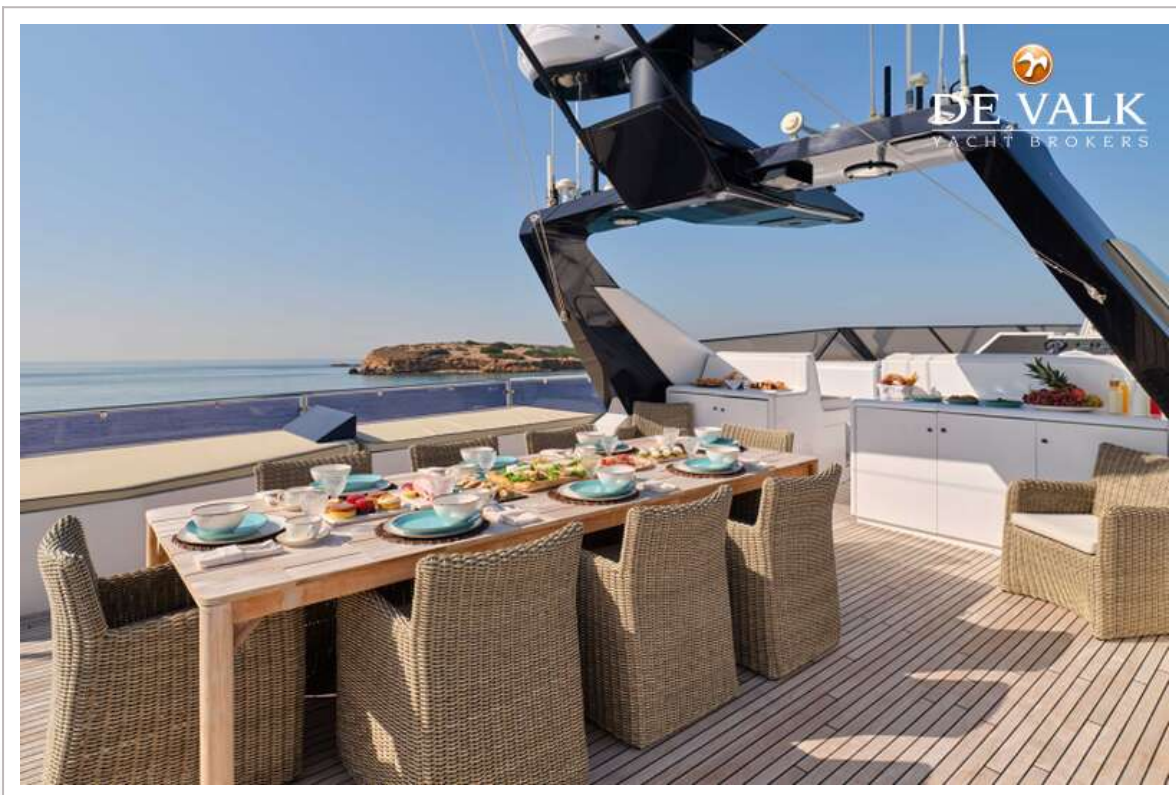
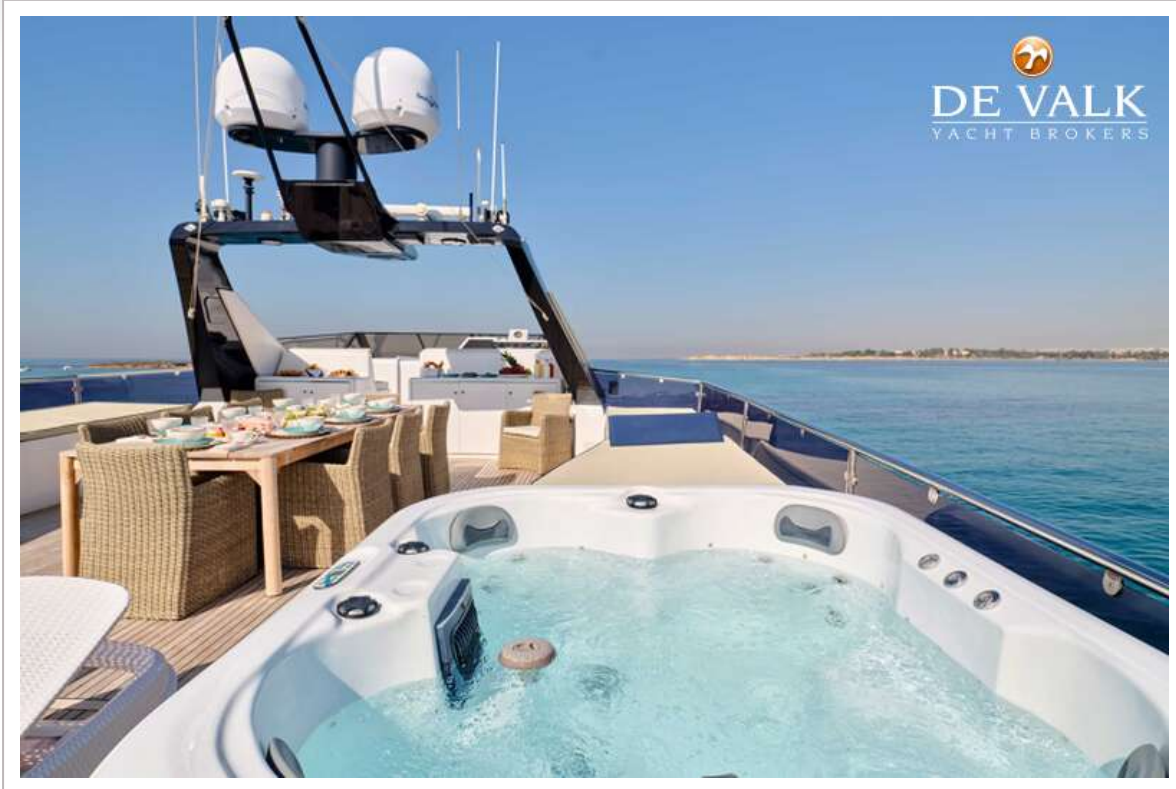
# BAGLIETTO 120



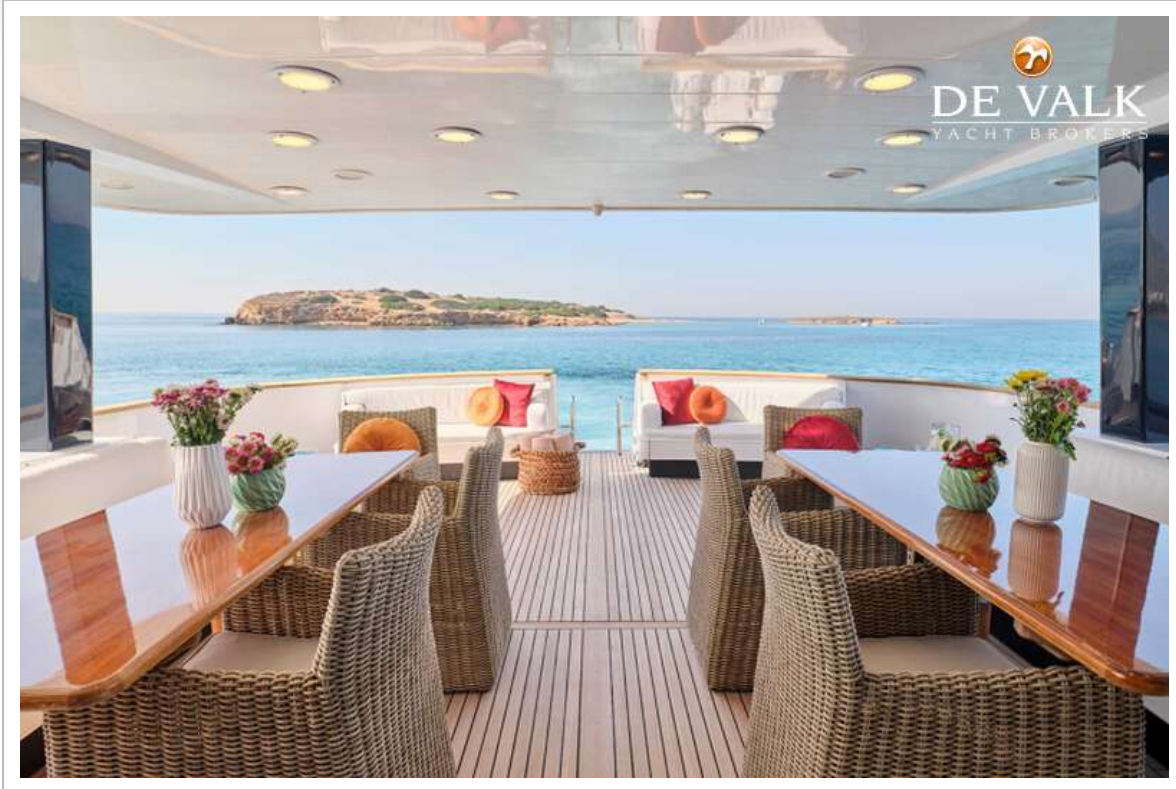
# BAGLIETTO 120



# BAGLIETTO 120

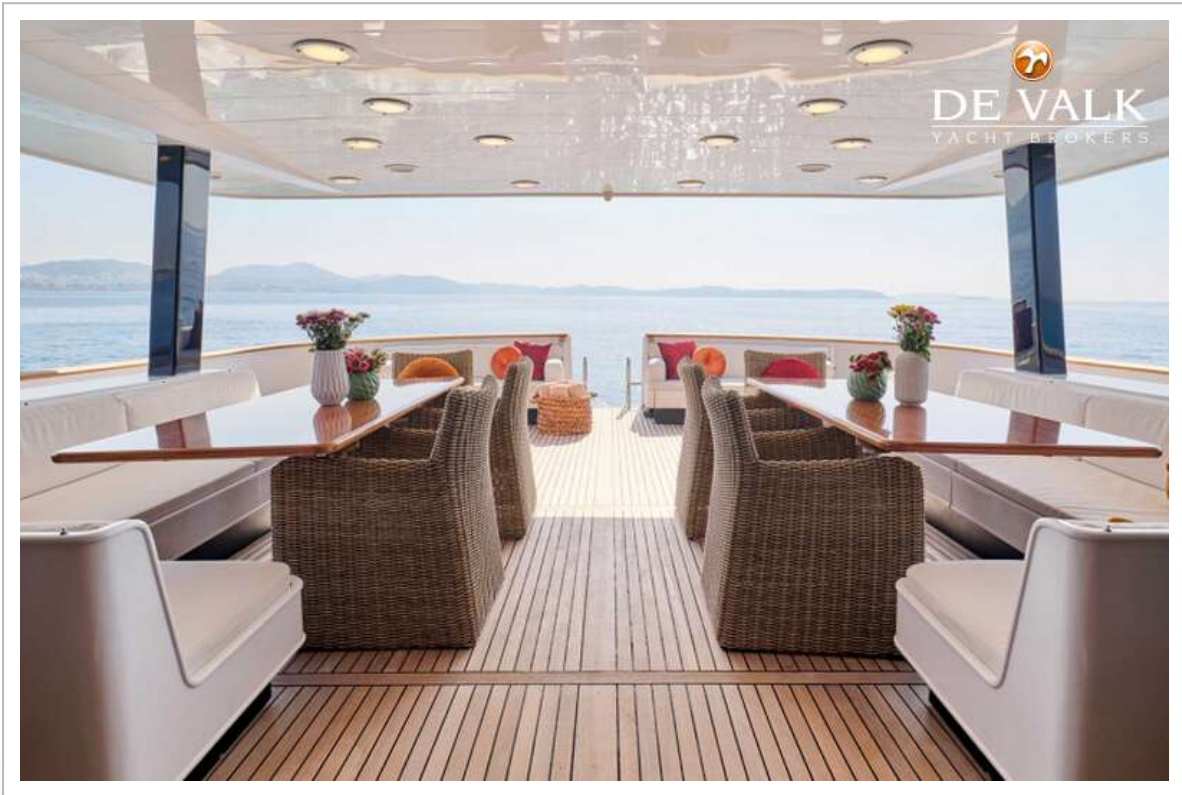


# BAGLIETTO 120

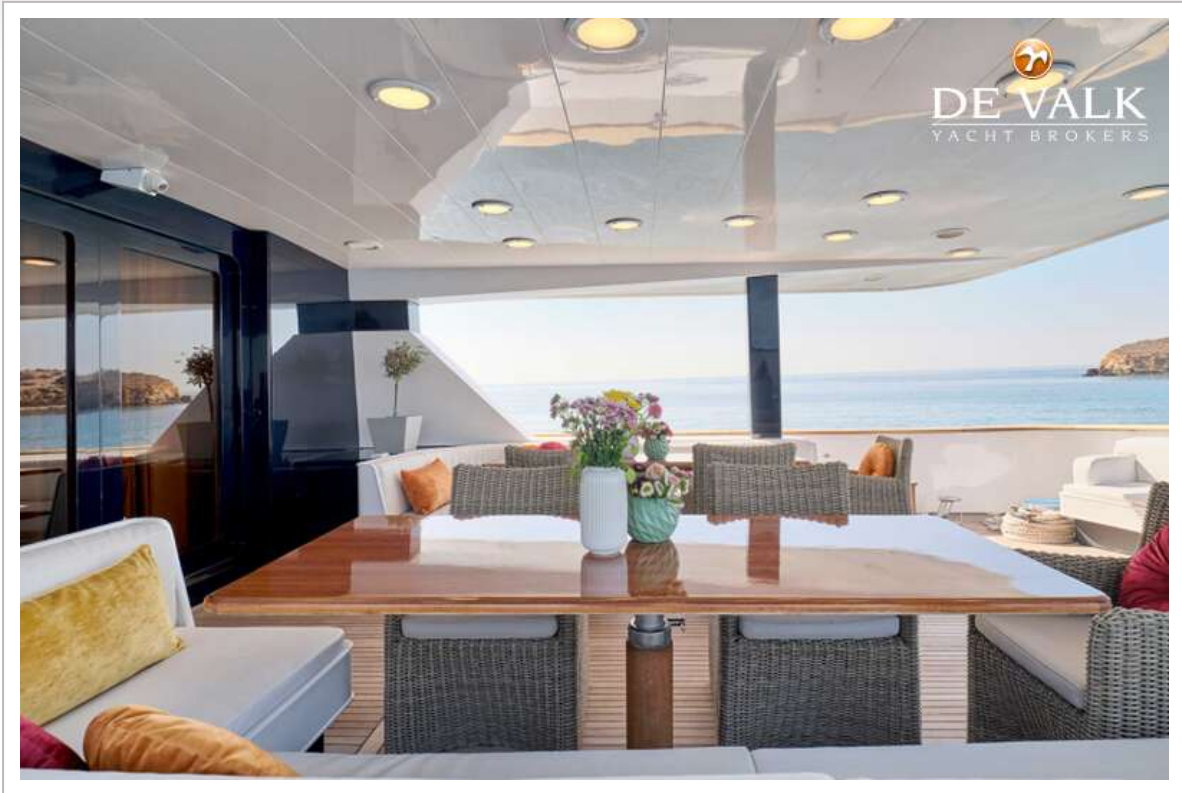




BAGLIETTO 120



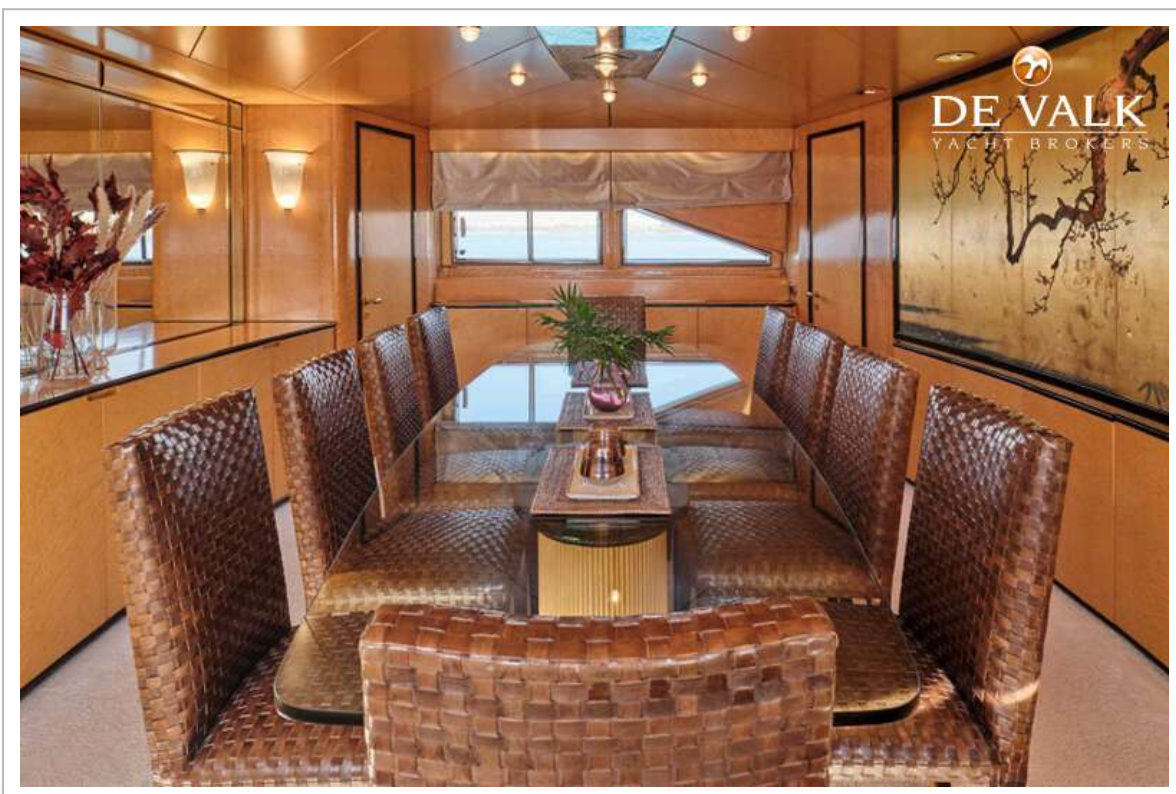
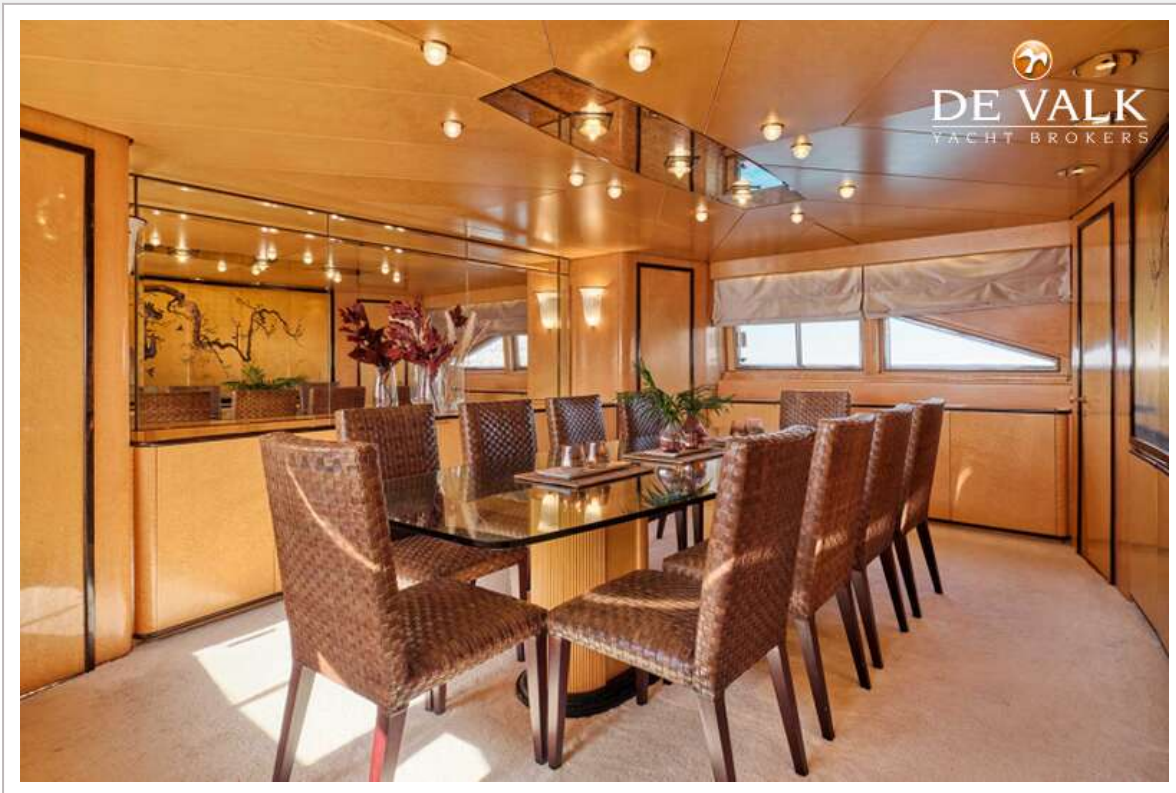
BAGLIETTO 120



BAGLIETTO 120



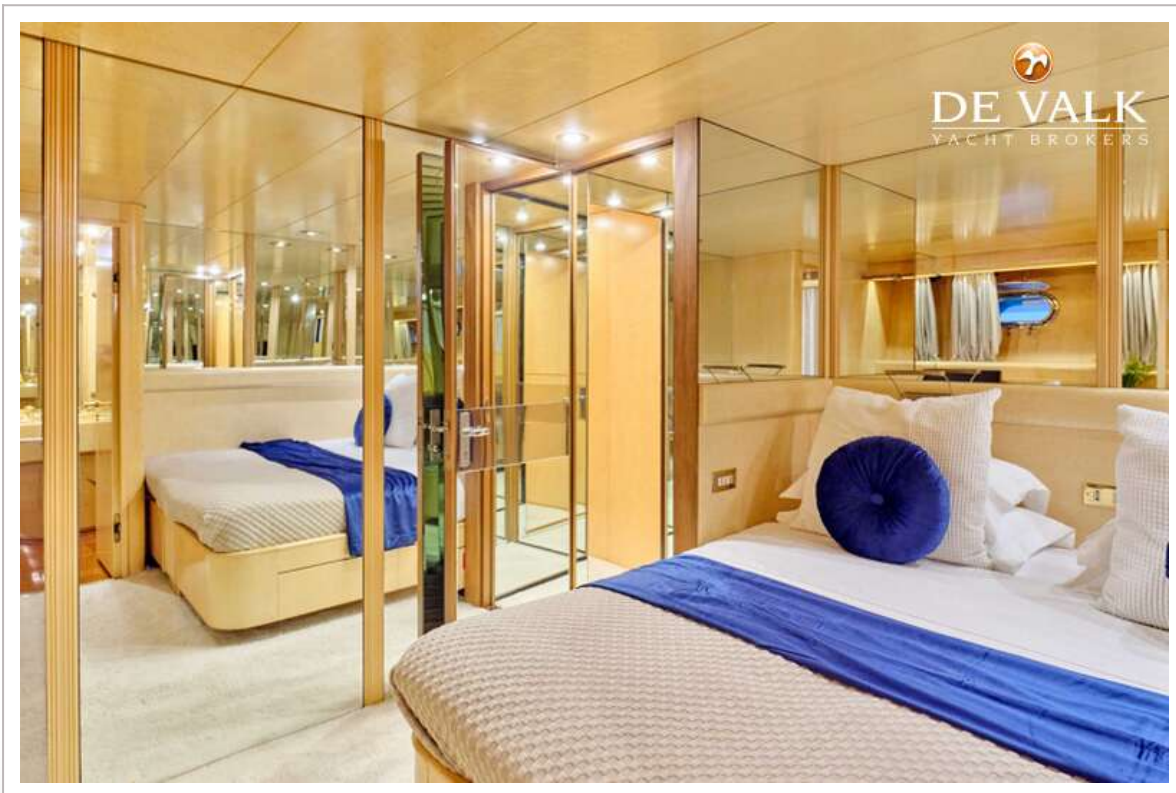
# BAGLIETTO 120



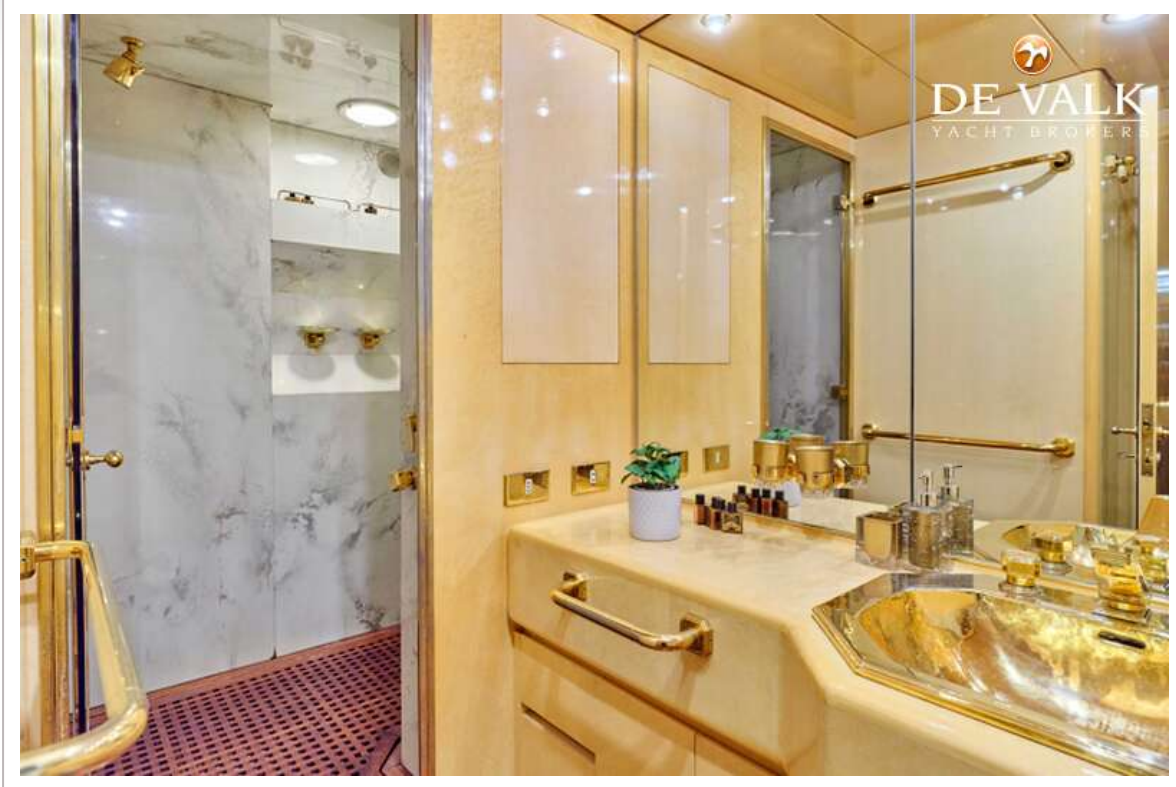
# BAGLIETTO 120



# BAGLIETTO 120



# BAGLIETTO 120







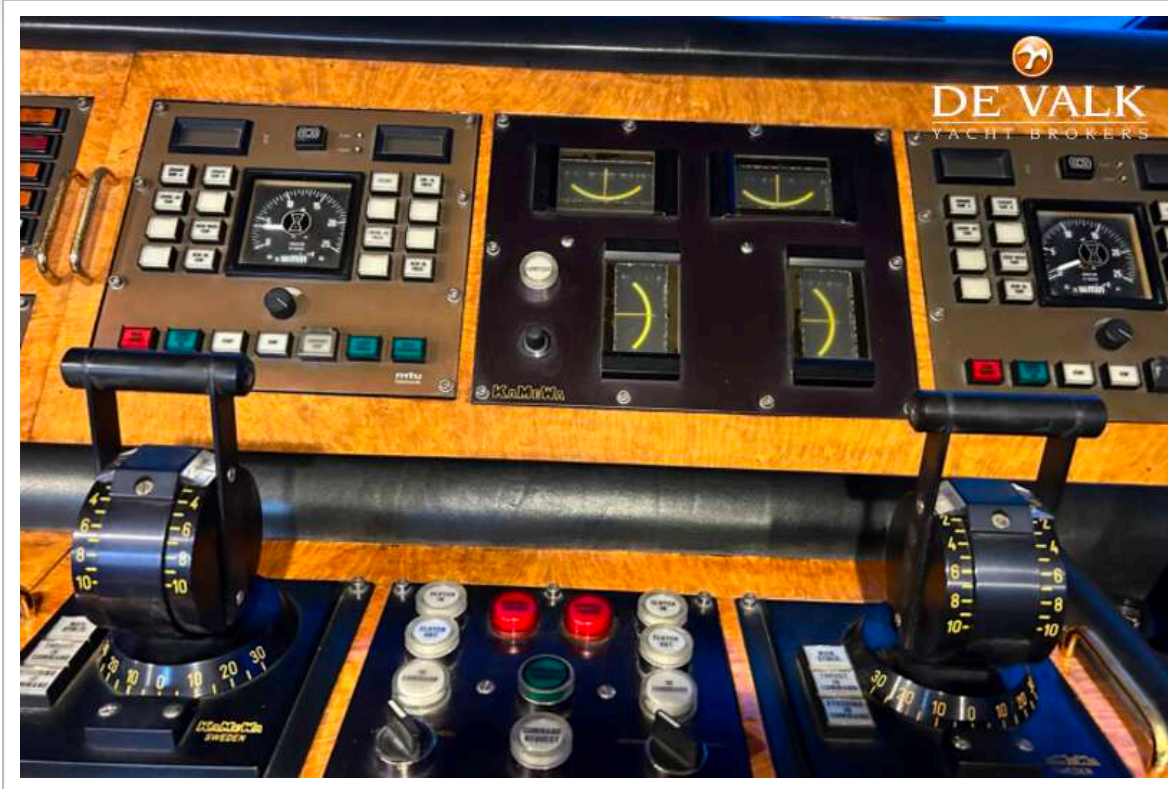
# BAGLIETTO 120



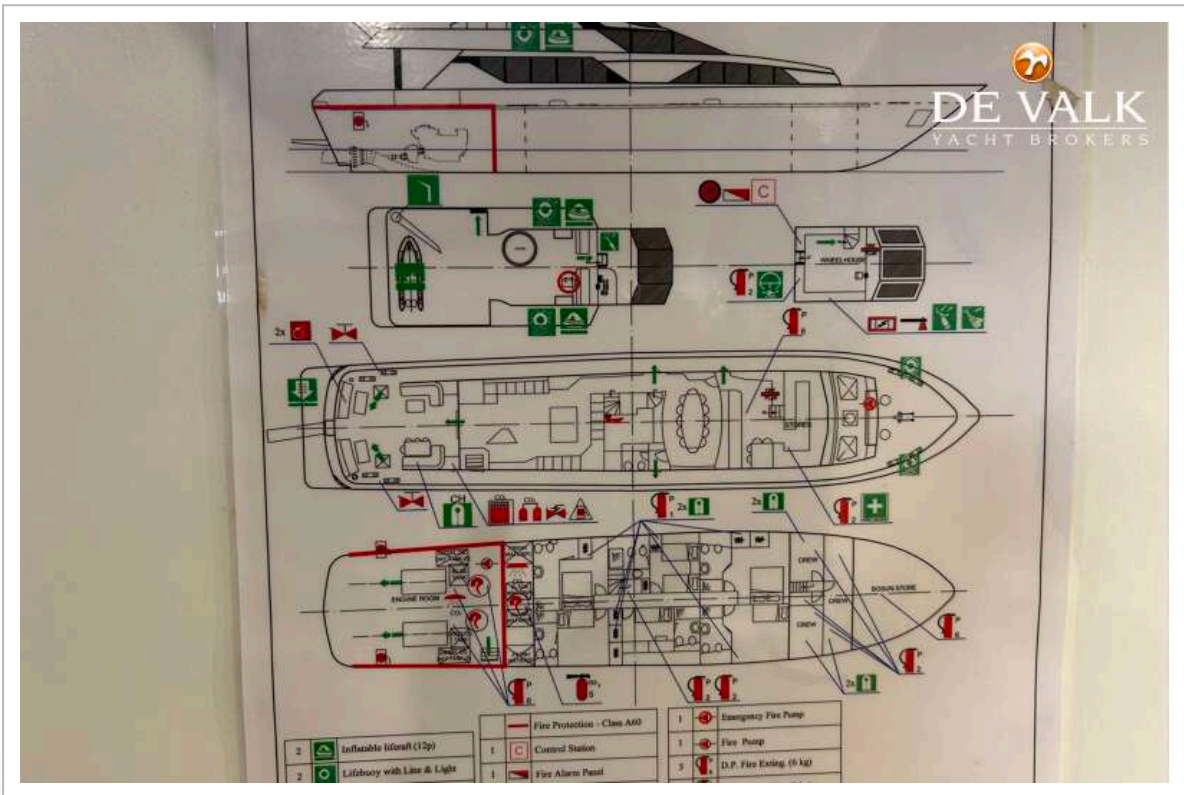
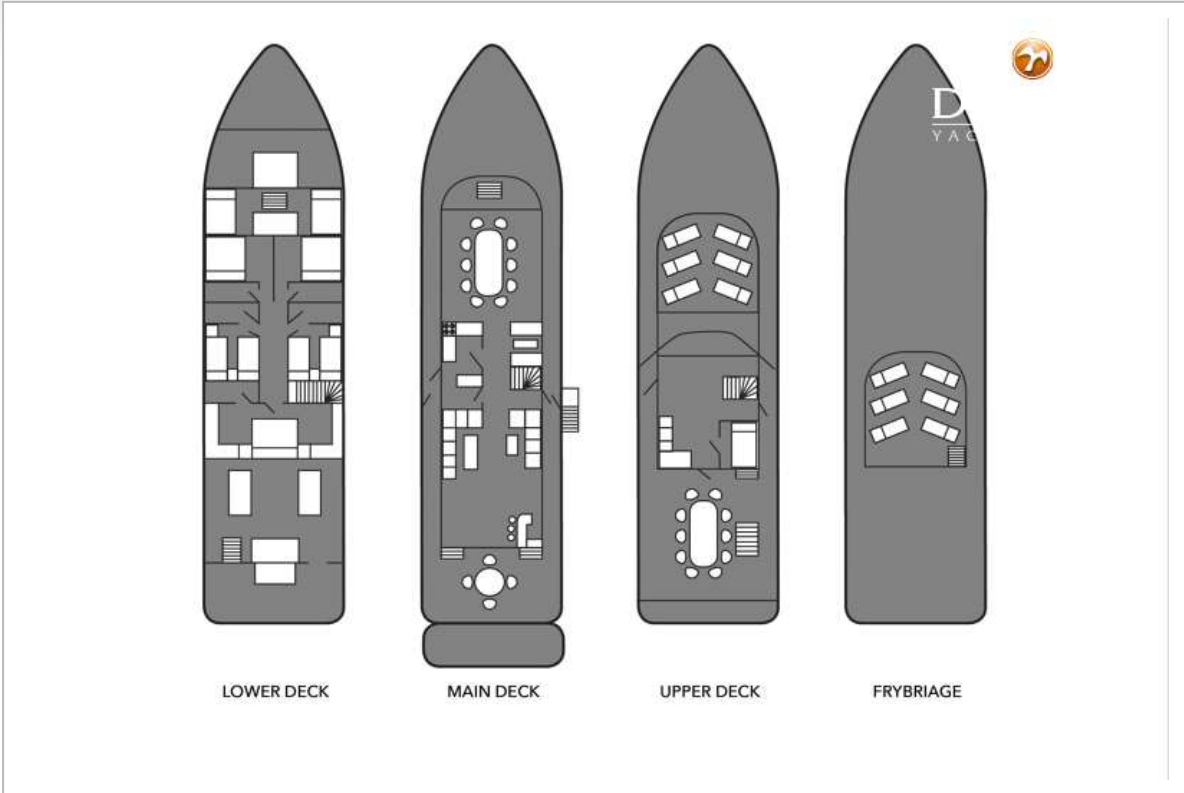
BAGLIETTO 120



# BAGLIETTO 120



# BAGLIETTO 120



# BAGLIETTO 120

