



DE VALK  
YACHT BROKERS



## HOUSEBOAT LUXE MOTOR



DE VALK  
YACHT BROKERS

# HOUSEBOAT LUXE MOTOR

## BROKER'S COMMENTS

The Bonnemo Luna is a completely self-sufficient luxury houseboat. A large number of well-thought-out details, high-quality craftsmanship and a great deal of attention to detail make this floating luxury resort a truly unique piece. The technical equipment with photovoltaic system, heat pump heating, fresh water production, grey and black water purification system, etc. corresponds to the current possibilities of building technology.

*Ralph Weil*

## SPECIFICATIONS

<b>Dimensions</b>	15.00 x 5.50 x 0.80 (m)	<b>Builder</b>	Eigenbau
<b>Built</b>	2020	<b>Cabins</b>	1
<b>Material</b>	Aluminium	<b>Berths</b>	2
<b>Engine(s)</b>	2 x Stil Propulsion Electric elec	<b>Hp/Kw</b>	2 x 14.00 (hp), 10.30 (kw)
<b>Asking price</b>	€ 1.190.000 (VAT Paid)	<b>Lying</b>	at sales office

## CONTACT

<b>Sales office</b>	De Valk Berlin	<b>Telephone</b>	+49 30 325 99 651
<b>Address</b>	Siegfried-Berger Str.13 12557 Berlin Germany	<b>E-mail</b>	berlin@devalk.nl

## DISCLAIMER

These particulars are given in good faith as supplied but cannot be guaranteed.



# HOUSEBOAT LUXE MOTOR

## GENERAL

<b>Model</b>	HOUSEBOAT LUXE MOTOR
<b>Type</b>	motor yacht
<b>LOA (m)</b>	15,00
<b>Beam (m)</b>	5,50
<b>Draft (m)</b>	0,80
<b>Air draft (m)</b>	3,60
<b>Air draft min (m)</b>	3,20
<b>Headroom (m)</b>	2,00
<b>Year built</b>	2020
<b>Launched</b>	2021
<b>Builder</b>	Eigenbau
<b>Country</b>	Germany
<b>Displacement (t)</b>	18
<b>Hull material</b>	aluminium
<b>Hull shape</b>	flat bottom
<b>Superstructure material</b>	wood epoxy
<b>Rubbing strake</b>	stainless steel
<b>Deck material</b>	wood epoxy
<b>Antifouling (year)</b>	yes
<b>Window frame</b>	aluminium
<b>Window material</b>	double glazing
<b>Deckhatch</b>	electric
<b>Insulation</b>	foam plates
<b>Mast can be lowered</b>	manual
<b>Fuel tank (litre)</b>	stainless steel
<b>Level indicator (fuel tank)</b>	Digital
<b>Freshwater tank (litre)</b>	stainless steel 500
<b>Level indicator (freshwater)</b>	Digital
<b>Blackwater tank (litre)</b>	stainless steel 500
<b>Level indicator (blackwater)</b>	Digital Digital



# HOUSEBOAT LUXE MOTOR

<b>Blackwater tank extraction</b>	deck extraction + pump
<b>Level indicator (greywater)</b>	Digital
<b>Wheel steering</b>	hydraulic
<b>More info on hull</b>	Aluminum catamaran with 5 watertight bulkheads Aluminum catamaran with 5 watertight bulkheads

## ACCOMMODATION

<b>Cabins</b>	1
<b>Berths</b>	2
<b>Interior</b>	teak
<b>Floor</b>	anti-slip Holz in Deck Optik
<b>Deck saloon</b>	yes
<b>Headroom saloon (m)</b>	2,10
<b>Heating</b>	floor heating Kabinen
<b>Heating 2</b>	Siemens Wärmepumpe
<b>Sliding door to cockpit</b>	3 parts 3 teilig
<b>Opening door to cockpit</b>	yes
<b>Sliding door to aft deck</b>	2 parts 2 teilig
<b>Galley</b>	yes
<b>Countertop</b>	stainless steel
<b>Sink</b>	corian
<b>Cooker</b>	induction
<b>Oven</b>	Siemens Elektro
<b>Fridge</b>	LG Multidoor ca 630l.
<b>Freezer</b>	LG
<b>Hot water system</b>	on central heating
<b>Water pressure system</b>	electrical
<b>Dishwasher</b>	Siemens 65 cm breit
<b>Hot water tap</b>	yes
<b>Owners cabin</b>	double bed
<b>Wardrobe</b>	hanging/drawers/shelves



# HOUSEBOAT LUXE MOTOR

<b>Bathroom</b>	separate
<b>Toilet</b>	separate
<b>Toilet system</b>	electric
<b>Wash basin</b>	in the bathroom
<b>Extra info</b>	large room next to the bathroom can be converted into a sauna Large room next to the bathroom can be converted into a sauna
<b>Bathroom</b>	separate
<b>Toilet</b>	separate
<b>Toilet system</b>	electric
<b>Wash basin</b>	in the bathroom
<b>Shower</b>	separate
<b>Washing machine/dryer combi</b>	yes
<b>Sky lounge</b>	yes
<b>Extra info</b>	Hydraulic platform for tender

## MACHINERY

<b>No of engines</b>	2
<b>Make</b>	Stil Propolsion
<b>Type</b>	Electric
<b>HP</b>	14
<b>kW</b>	10.30
<b>Fuel</b>	electric
<b>Year installed</b>	2020
<b>Engine cooling system</b>	seawater
<b>Drive</b>	sail-drive
<b>Engine controls</b>	electrical
<b>Bowthruster</b>	electric
<b>Manual bilge pump</b>	yes
<b>Electric bilge pump</b>	yes
<b>Bilge alarm</b>	yes
<b>Generator</b>	silent separator



# HOUSEBOAT LUXE MOTOR

Batteries	yes
Service battery	yes
Electric engine battery	yes
Battery charger	yes
Inverter	yes
Solar panel	yes
Diode battery combiners	yes
Shorepower	yes
Insulation transformer	yes
Watermaker	Fresh water to drinking water

## NAVIGATION

Multi control display	yes
Depth sounder	yes
Plotter/GPS	yes
Wifi antenna	yes
Camera	yes
Navigation lights	yes
Searchlight	yes

## EQUIPMENT

Bathing platform	yes
Boarding ladder	yes
Anchor	Delta Stainless Steel
Anchor chain	Stainless Steel
Windlass	electrical
Dinghy	yes
Fenders	yes
Mooring lines	yes
TV	yes
iPod connection	yes



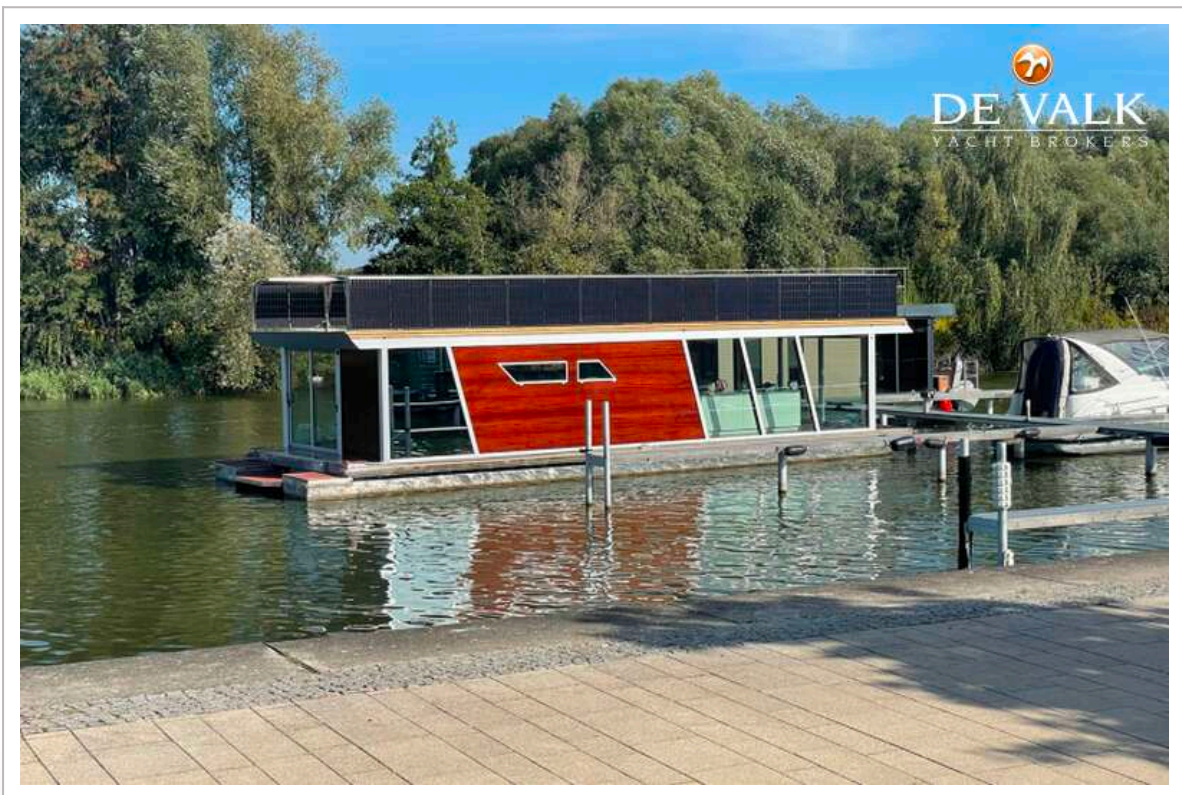
# HOUSEBOAT LUXE MOTOR

Surround Sound System	yes
Speakers in salon	yes
Fire extinguisher	yes



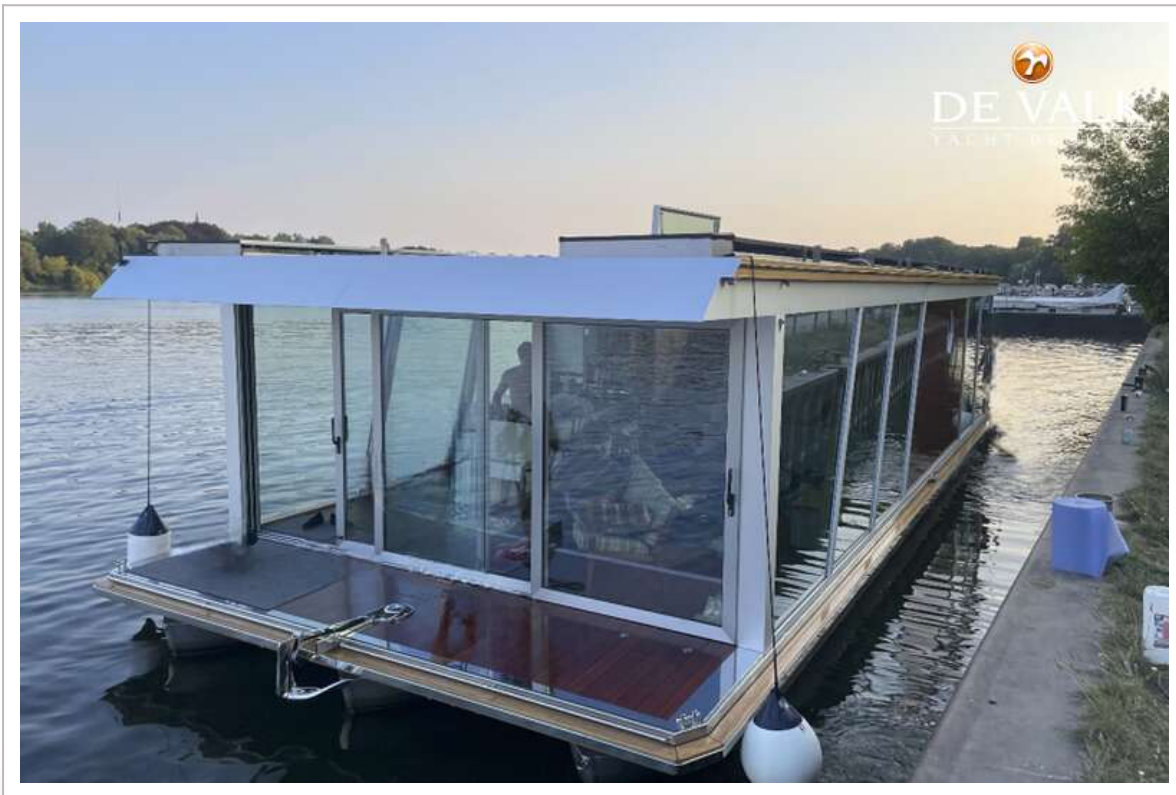


# HOUSEBOAT LUXE MOTOR





# HOUSEBOAT LUXE MOTOR



# HOUSEBOAT LUXE MOTOR



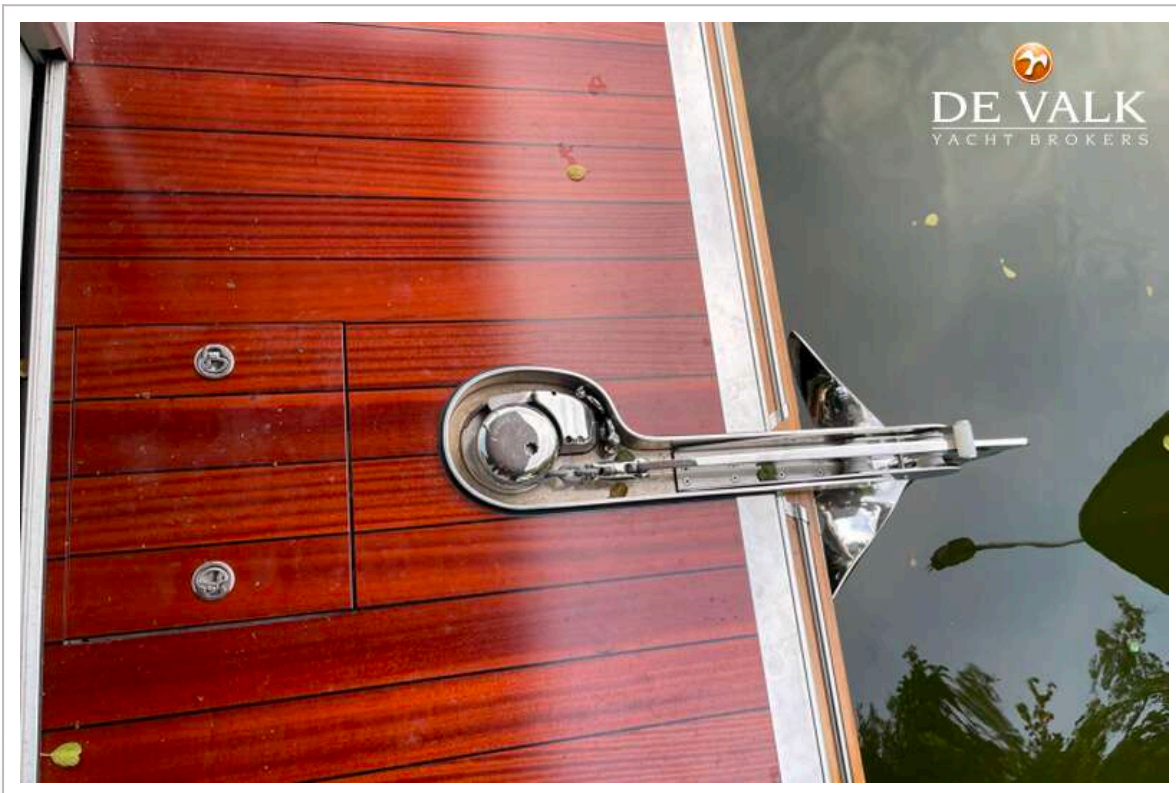


# HOUSEBOAT LUXE MOTOR

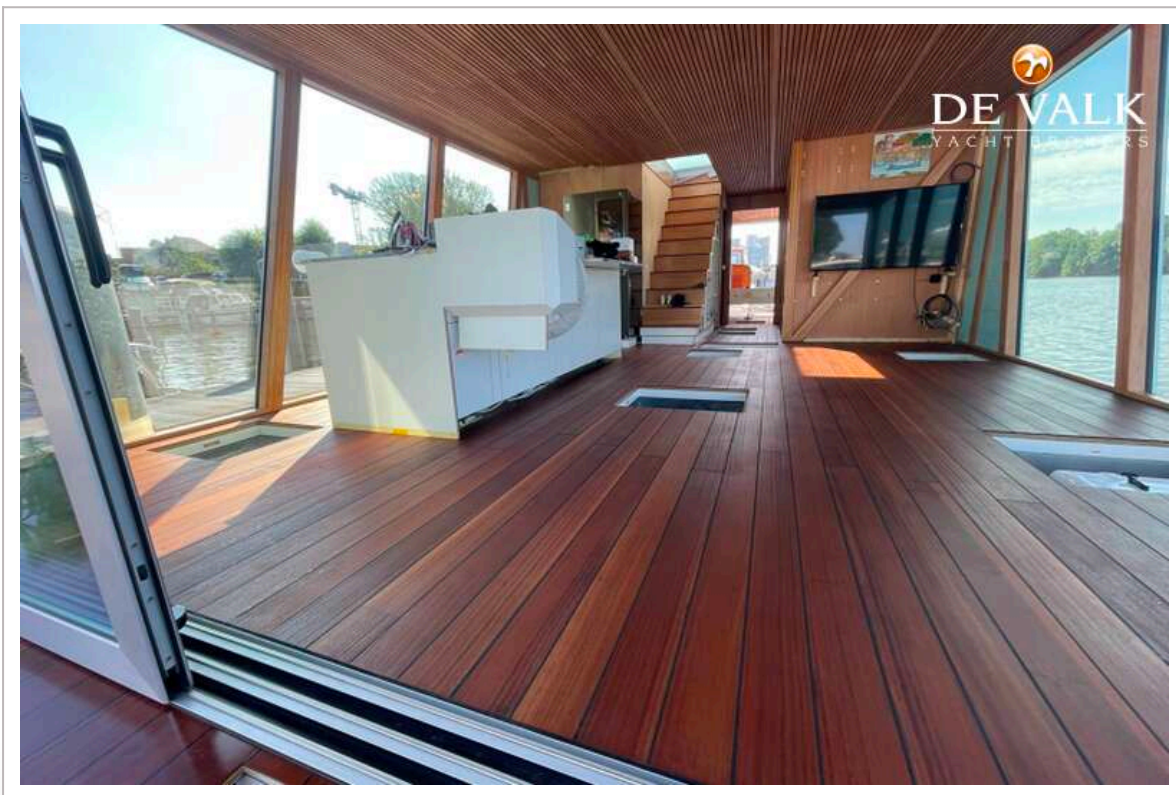
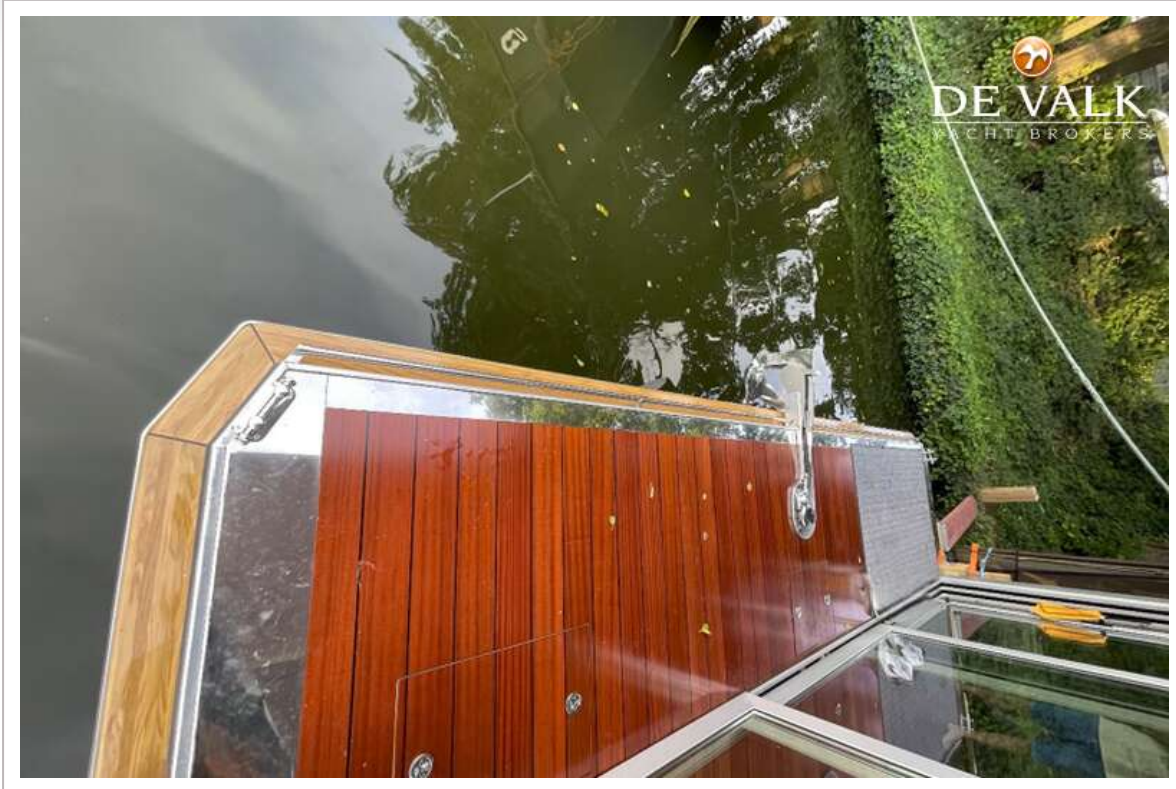




# HOUSEBOAT LUXE MOTOR

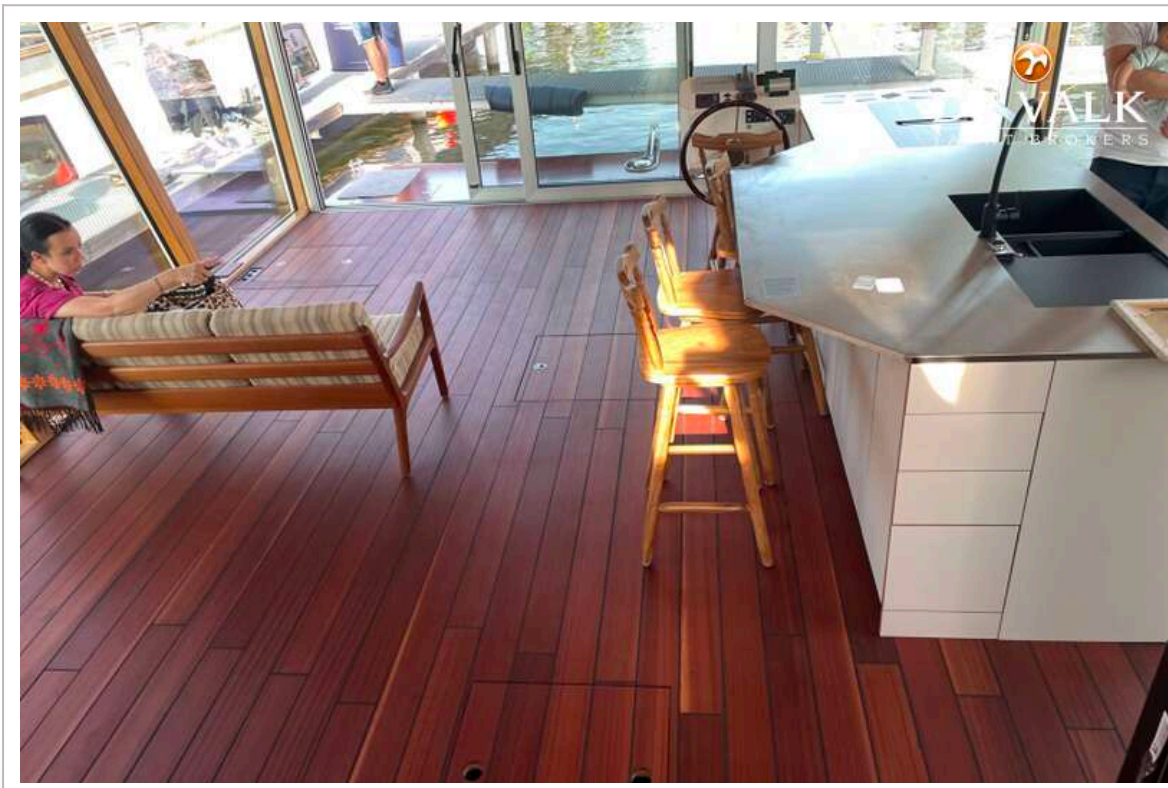
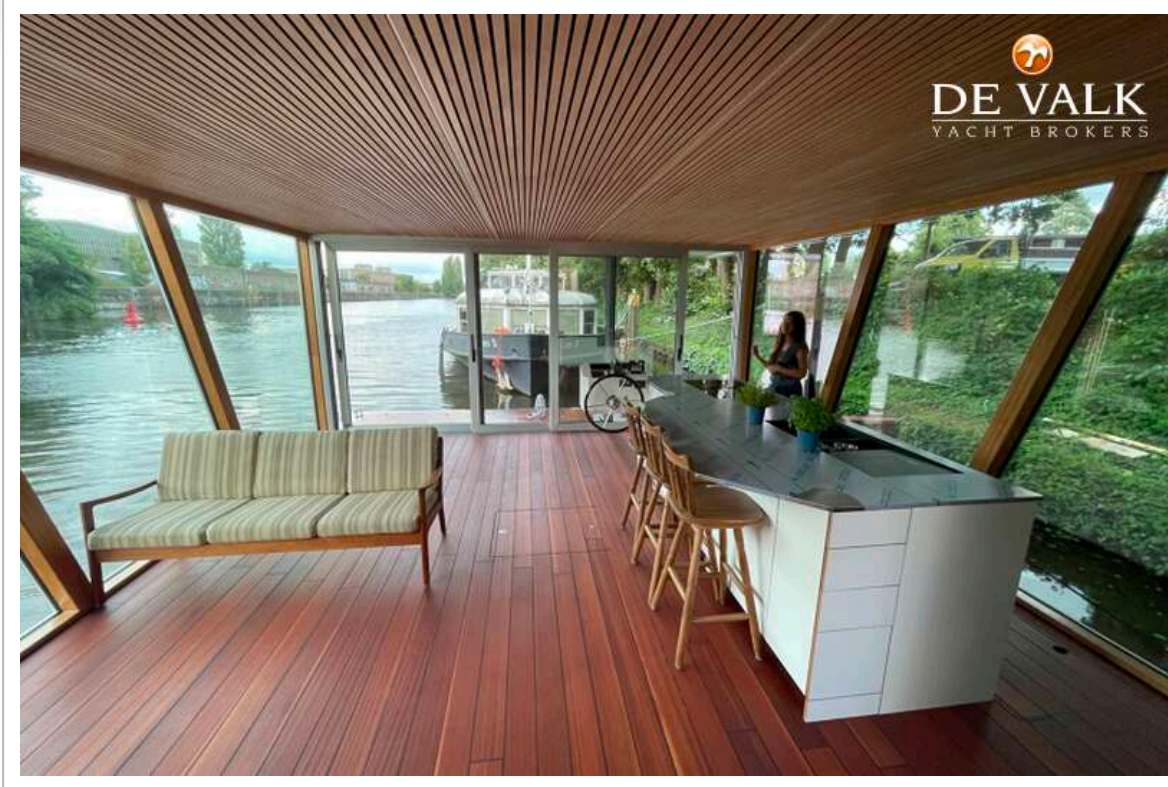


# HOUSEBOAT LUXE MOTOR



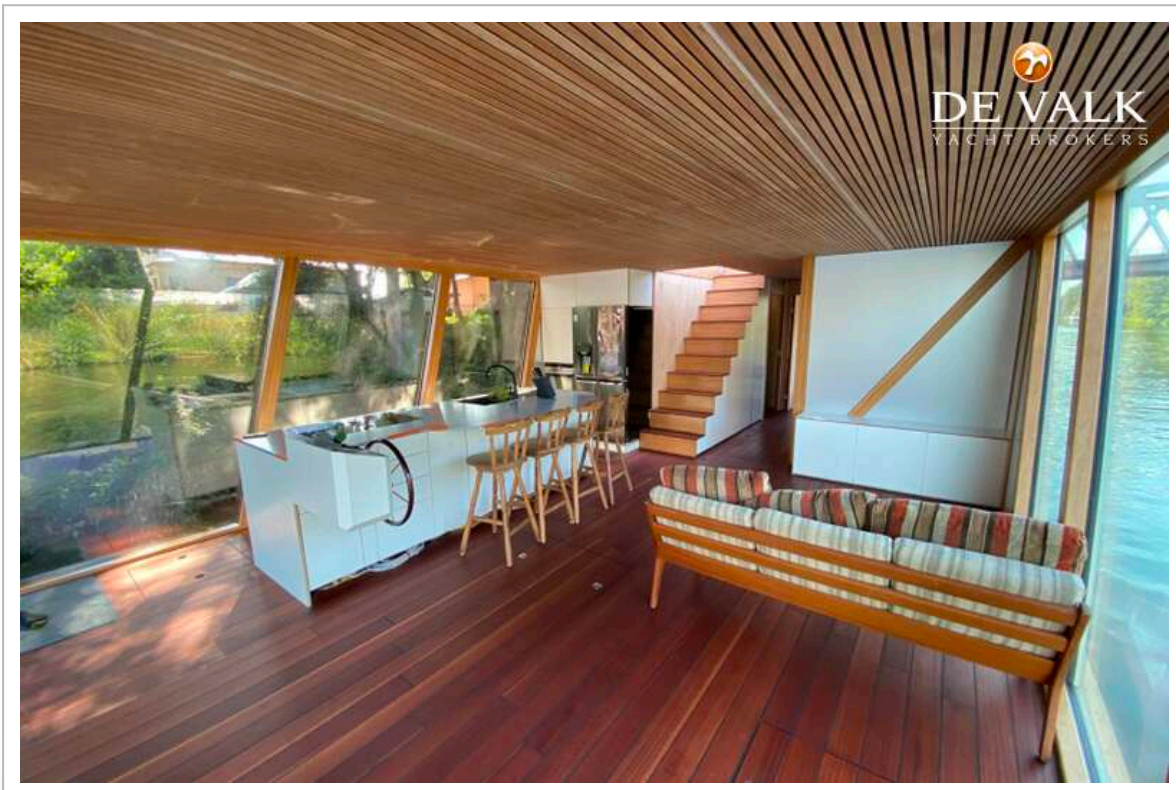
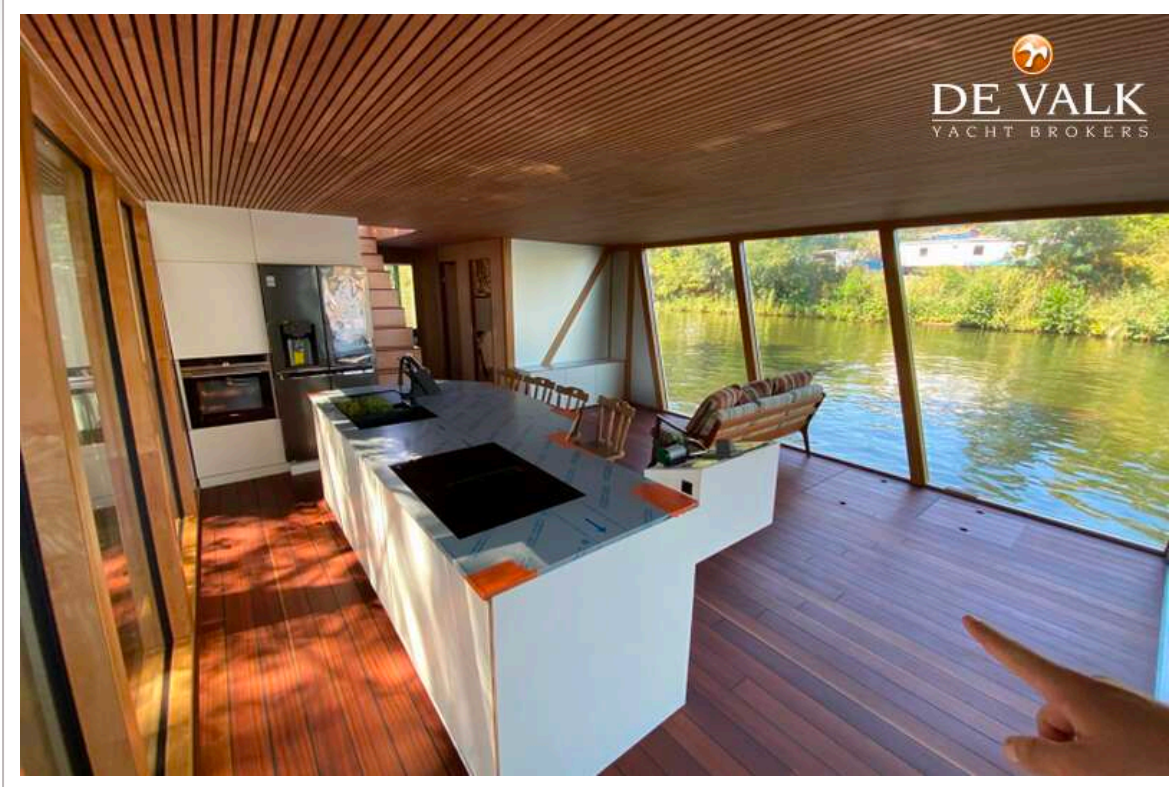


# HOUSEBOAT LUXE MOTOR



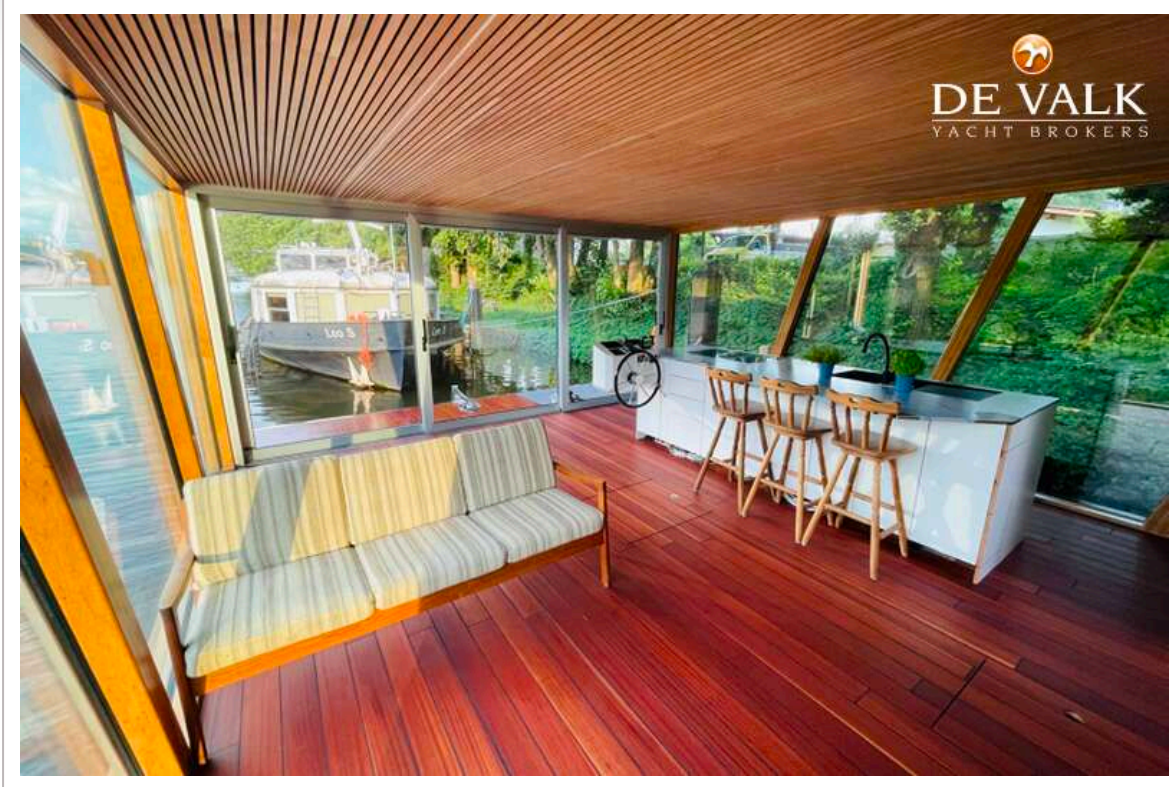


# HOUSEBOAT LUXE MOTOR



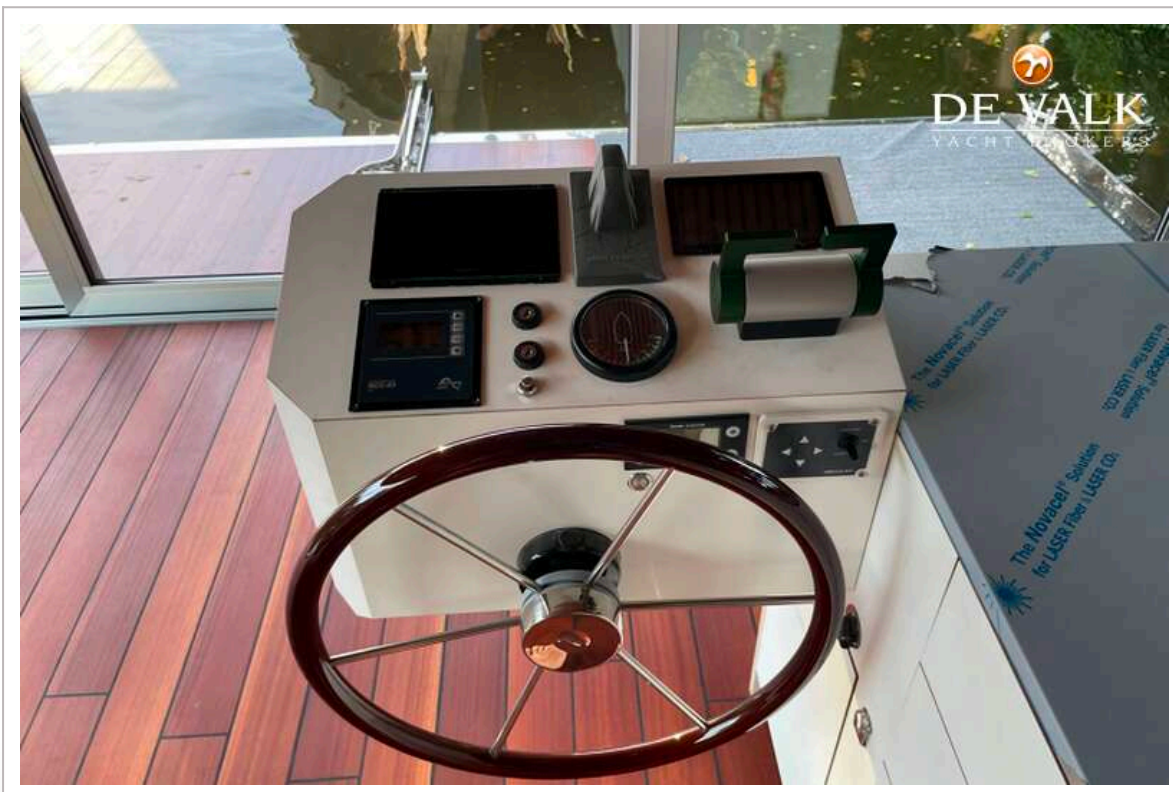
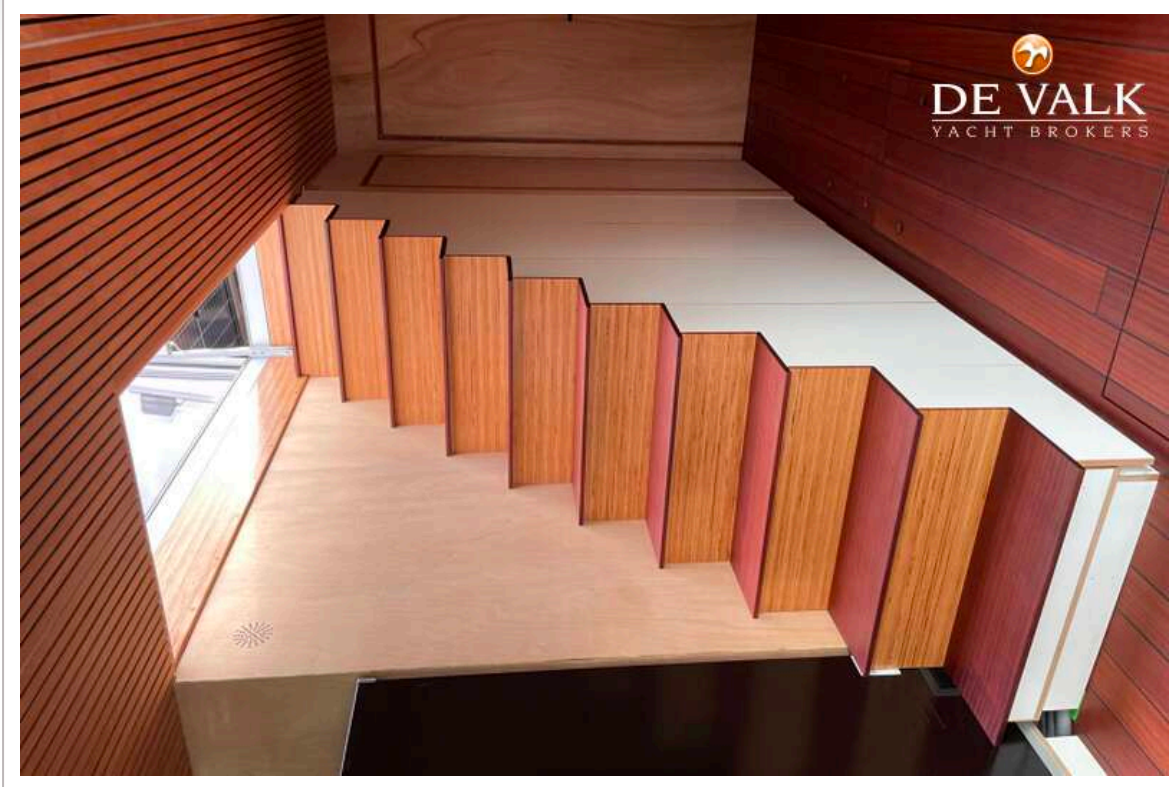


# HOUSEBOAT LUXE MOTOR



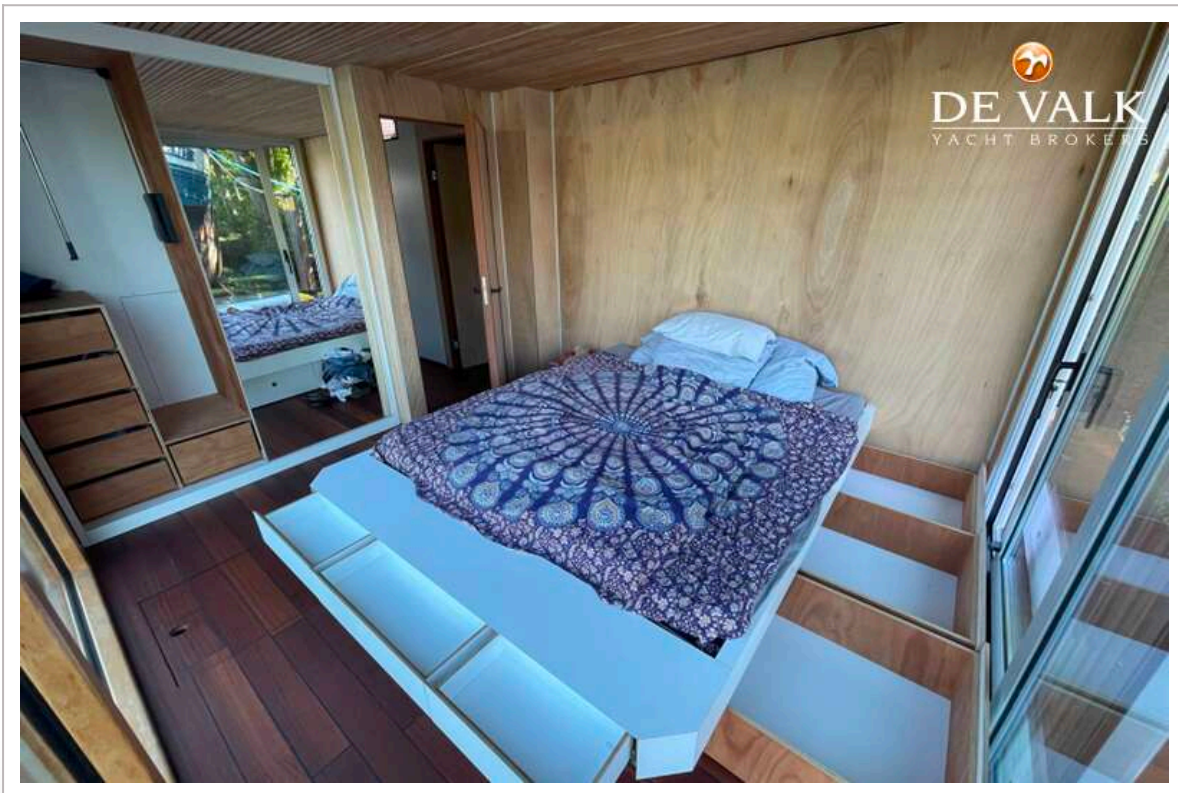
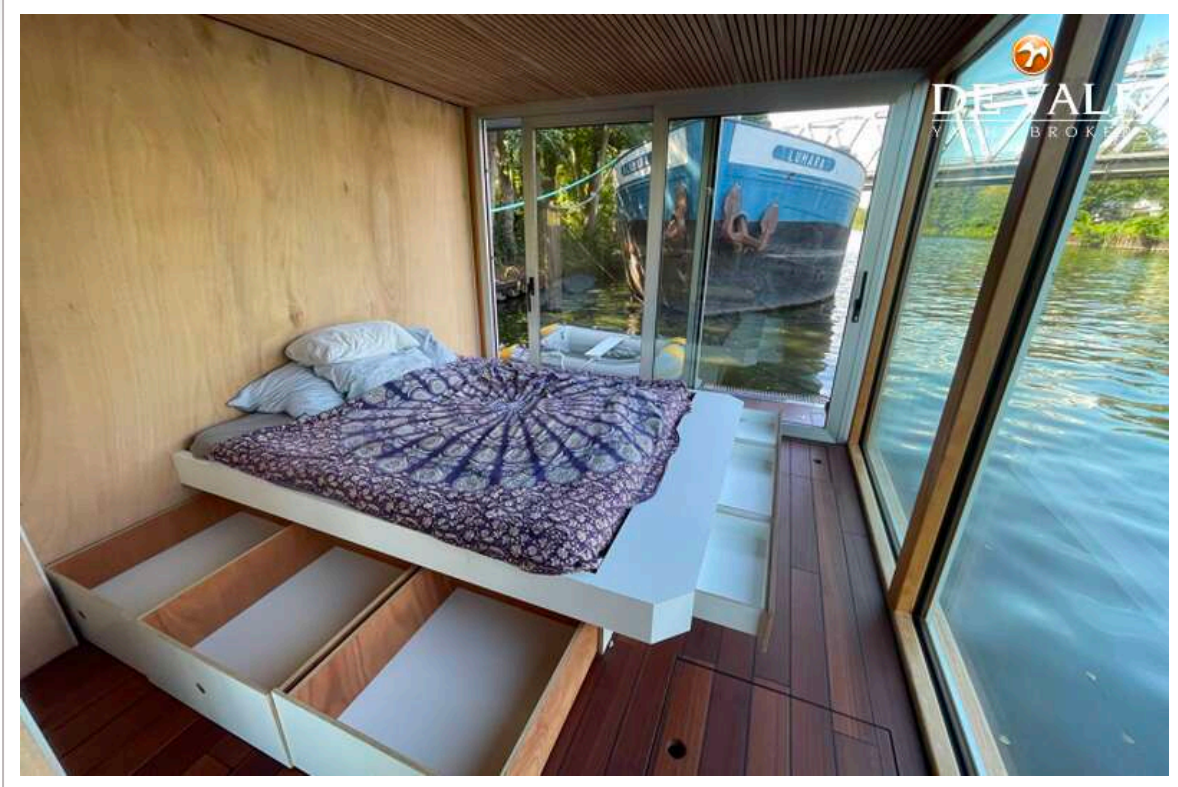


# HOUSEBOAT LUXE MOTOR





# HOUSEBOAT LUXE MOTOR



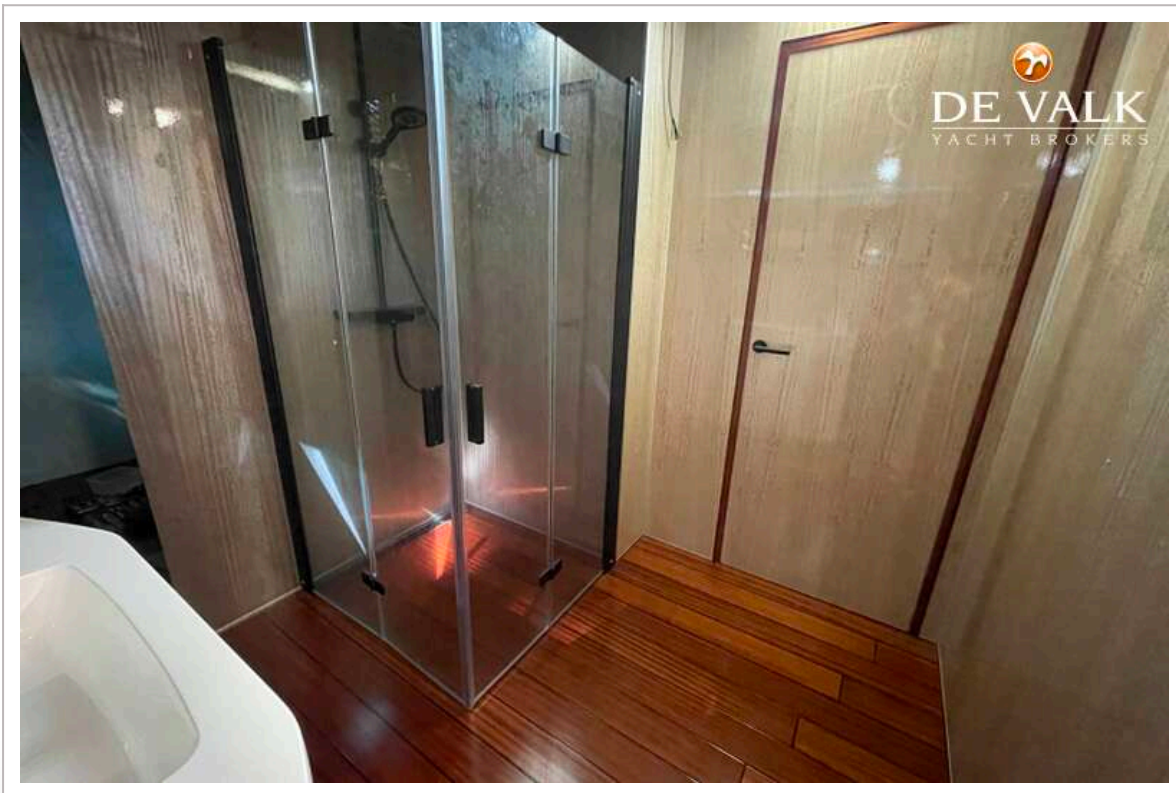
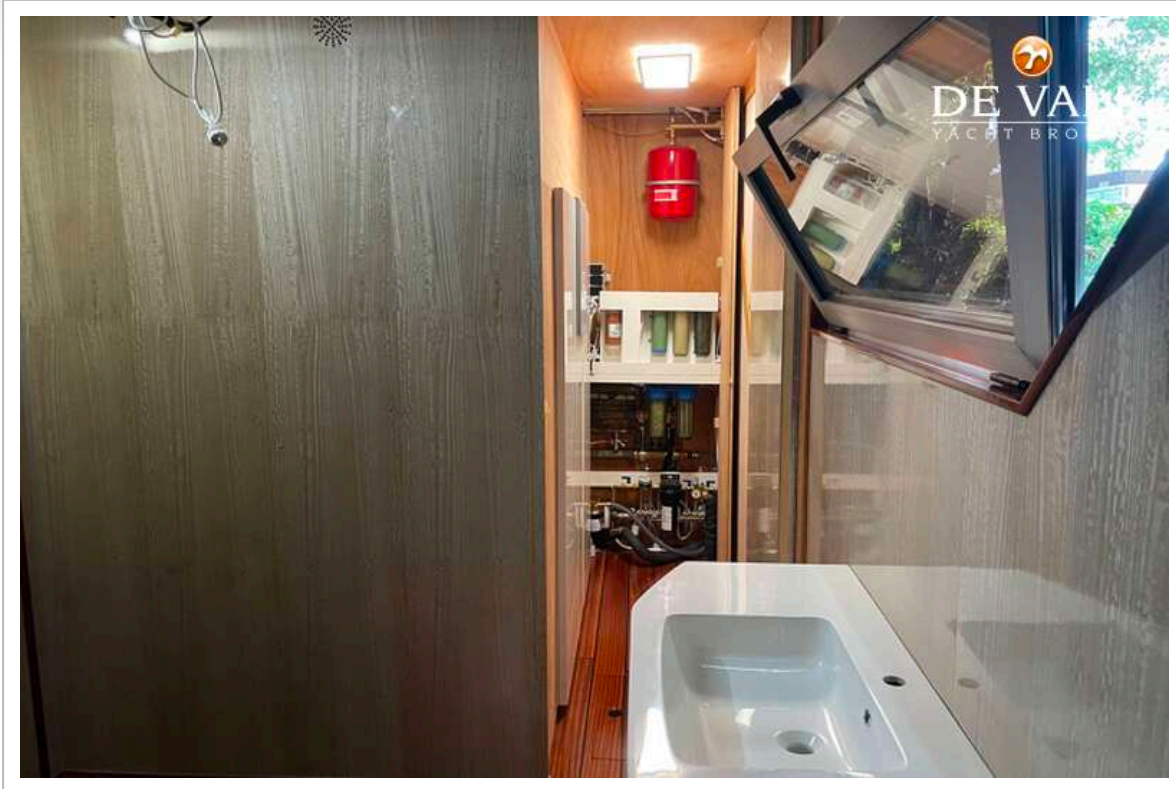


# HOUSEBOAT LUXE MOTOR





# HOUSEBOAT LUXE MOTOR





# HOUSEBOAT LUXE MOTOR



# HOUSEBOAT LUXE MOTOR

