



DE VALK
YACHT BROKERS



BAVARIA 55 CRUISER



DE VALK
YACHT BROKERS

BAVARIA 55 CRUISER

BROKER'S COMMENTS

Experience luxury and performance with this Bavaria 55 Cruiser. Perfectly suited for extended voyages or relaxing coastal adventures, this spacious yacht offers comfort, style, and robust sailing capabilities. Equipped with advanced B&G navigation systems, it provides precision and ease on the water. Key features:
Comprehensive B&G electronics package
Generous living spaces and practical layout
Ready to be customized for your next journey
Seize the opportunity to own this Bavaria 55 Cruiser. the yacht is privately owned. Contact us today for more information or to schedule a viewing!

Arjen Hoeksma

SPECIFICATIONS

Dimensions	16.75 x 4.87 x 2.35 (m)	Builder	Bavaria Yachtbau
Built	2010	Cabins	4
Material	GRP	Berths	8
Engine(s)	1 x Volvo Penta D3-110 diesel	Hp/Kw	110.00 (hp), 80.96 (kw)
Asking price	€ 350.000 (VAT Not paid)	Lying	Croatia

CONTACT

Sales office	De Valk Dalmatia	Telephone	+385 914 567 834
Address	Ul. Velimira Skorpika 22000 Sibenik HR	E-mail	dalmatia@devalk.nl

DISCLAIMER

These particulars are given in good faith as supplied but cannot be guaranteed.



BAVARIA 55 CRUISER

GENERAL

Model	BAVARIA 55 CRUISER
Type	sailing yacht
LOA (m)	16,75
LWL (m)	14,96
Beam (m)	4,87
Draft (m)	2,35
Year built	2010
Builder	Bavaria Yachtbau
Country	Germany
Designer	Farr Design
Displacement (t)	18,59
CE norm	A
Hull material	GRP
Hull colour	white With grey lines
Keel type	bulb keel L shaped
Superstructure material	GRP
Rubbing strake	aluminum
Deck material	GRP
Deck finish	non-skid moulded in
Cockpit deck finish	teak
Antifouling (year)	2024
Dorades	yes
Portholes	aluminium
Fuel tank (litre)	stainless steel 380
Level indicator (fuel tank)	yes
Freshwater tank (litre)	polyethylene 700
Level indicator (freshwater)	yes
Blackwater tank (litre)	polyethylene 50
Level indicator (blackwater)	yes
Blackwater tank extraction	deck extraction



BAVARIA 55 CRUISER

Wheel steering	cable steering With covers
Outside helm position	yes
Emergency tiller	yes

ACCOMMODATION

Cabins	4
Berths	8
Interior	ash
Floor	woodprint
Heating	electric 220V
Air-conditioning	Cruisair Salon 16000 BTU, front cabin 12000 BTU
Chart table	yes
Aft Cabin	yes
Dinette	yes
Galley	yes
Countertop	plastic
Sink	Aluminium
Cooker	yes
Oven	Microwave
Fridge	177 ltr, with freezer compartment 44 ltr
Hot water system	220V + engine
Water pressure system	electrical
Coffee maker	yes
Owners cabin	double bed
Wardrobe	hanging/drawers/shelves
Bathroom	en suite
Toilet	en suite
Toilet system	electric
Wash basin	in the bathroom
Shower	en suite
Guest cabin 1	bunk bed



BAVARIA 55 CRUISER

Wardrobe	hanging and drawers
Bathroom	shared
Toilet	shared
Toilet system	electric
Wash basin	at the toilet
Shower	shared
Guest cabin 2	double bed
Wardrobe	hanging/drawers/shelves
Toilet	en suite
Toilet system	electric
Wash basin	at the toilet
Shower	shared
Guest cabin 3	double bed
Wardrobe	hanging/drawers/shelves
Toilet	shared
Toilet system	electric
Wash basin	at the toilet
Shower	shared
Extra info	Office cabin
Extra info	Dometic Coolmatic Cooler 20 ltr

MACHINERY

No of engines	1
Make	Volvo Penta
Type	D3-110
HP	110
kW	80.96
Fuel	diesel
Engine hours	2000
Gearbox	mechanical
Engine controls	electrical



BAVARIA 55 CRUISER

Bowthruster	electric
Exhaust	watercooled
Propeller type	fixed
Manual bilge pump	yes
Electric bilge pump	yes
Bilge alarm	yes
Electrical installation	yes
Generator	Fisher Panda 4.5 Kw
Batteries	yes
Start battery	1x Victron AGM 130Ah
Service battery	3x Victron LifePo4 200Ah
Generator battery	1x Victron AGM 90Ah
Bowthruster battery	Victron AGM 130Ah
Windlass battery	Victron AGM 90Ah
Battery monitor	Victron met GX touch lcd
Battery charger	Victron AC/DC
Battery charger/inverter	Victron Multi Plus 3000W
Solar panel	2x Victron 350W/peak each
Shorepower	with cable

NAVIGATION

Compass	B&G Precision 9
Depth sounder	yes
Forw. looking depth sounder	yes
Log	yes
Windset	B&G WS320
Repeater	6x B&G Triton2
VHF	B&G V60-B
VHF handheld	B&G H60
Autopilot	B&G NAC-3 with remote control WR10
Rudder angle indicator	yes



BAVARIA 55 CRUISER

Radar	B&G HALO24 Pulse
GPS	B&G
Plotter	yes
Plotter/GPS	B&G Vulcan 9" MFD
Radar/GPS	B&G
AIS receiver	NAIS-500 Class B
Radio receiver	yes
Transmitter	yes
Extra info	Victron Cerbo GX
Extra info	Navico NSPL-500 Antenna splitter

EQUIPMENT

Sprayhood	yes
Sprayhood with grab rail	yes
Cockpit cushions	yes
Cockpit table	yes
Bathing platform	Electric lifting system
Boarding ladder	yes
Transom door	yes
Gangway	Manual by ropes
Deck shower	yes
Anchor	Delta
Anchor chain	85 meters stainless steel
Windlass	electrical
Dinghy	3,75 mtrs, electric outboard
Sea railing	aluminum
Pushpit	yes
Pulpit	yes
Life raft	yes
Lifejackets	yes
Safety harness	yes



BAVARIA 55 CRUISER

Lifebuoy	yes
Safety lines on deck	yes
Radar reflector	yes
Fenders	yes
Mooring lines	yes
Alarm system	yes
TV	yes
Radio-cd player	yes
Cockpit speakers	Hertz
Speakers in salon	yes
Fire extinguisher	yes

RIGGING

Rigging	fractional with backstays
Brand mast	Seldén
Material mast	aluminium
Spreaders	yes
Mainsail	With vertical battens
Genoa	120%
Genoa furler	yes
Code Zero	With furling
Gennaker	yes
Reefing System	main in-mast furling
Boomvang	gasspring
Primary sheet winch	2x Lewmar 48
Genoa sheetwinches	2x Lewmar 58
Halyard winches	2x Lewmar 58
Reefing winch	Lewmar
Winchcovers	yes
Gennaker pole	GRP



BAVARIA 55 CRUISER



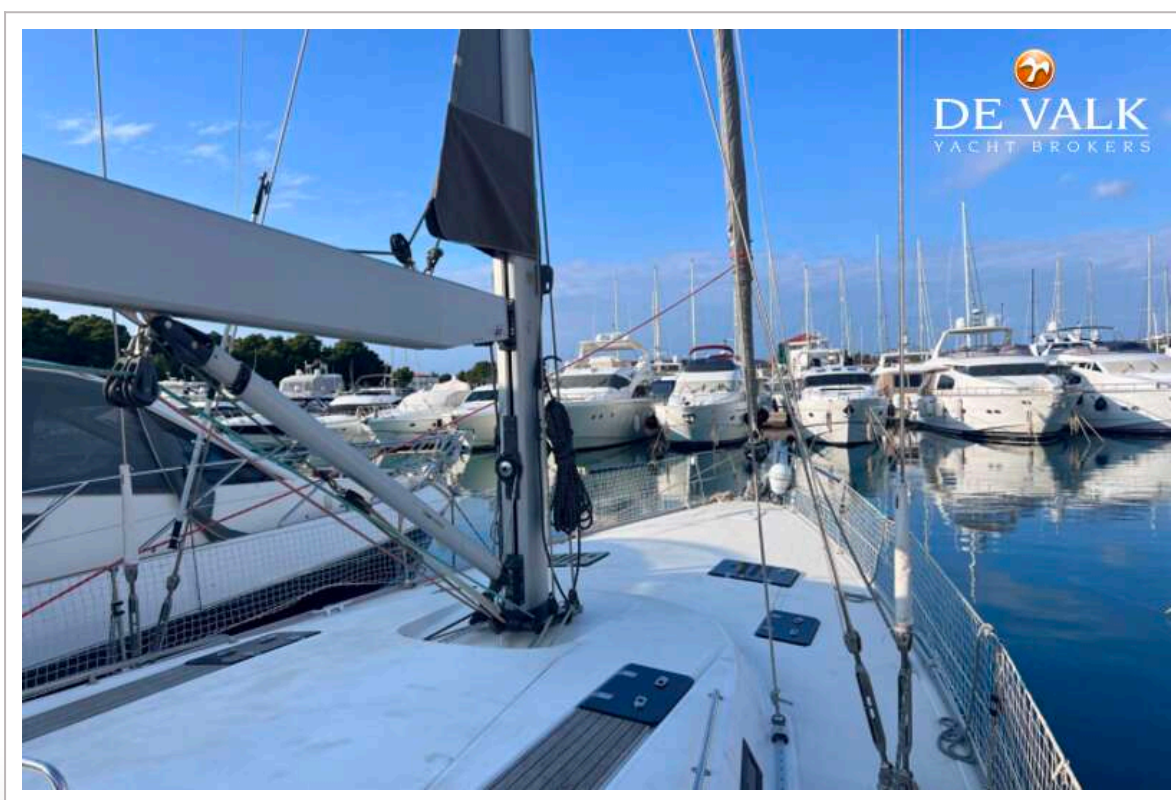
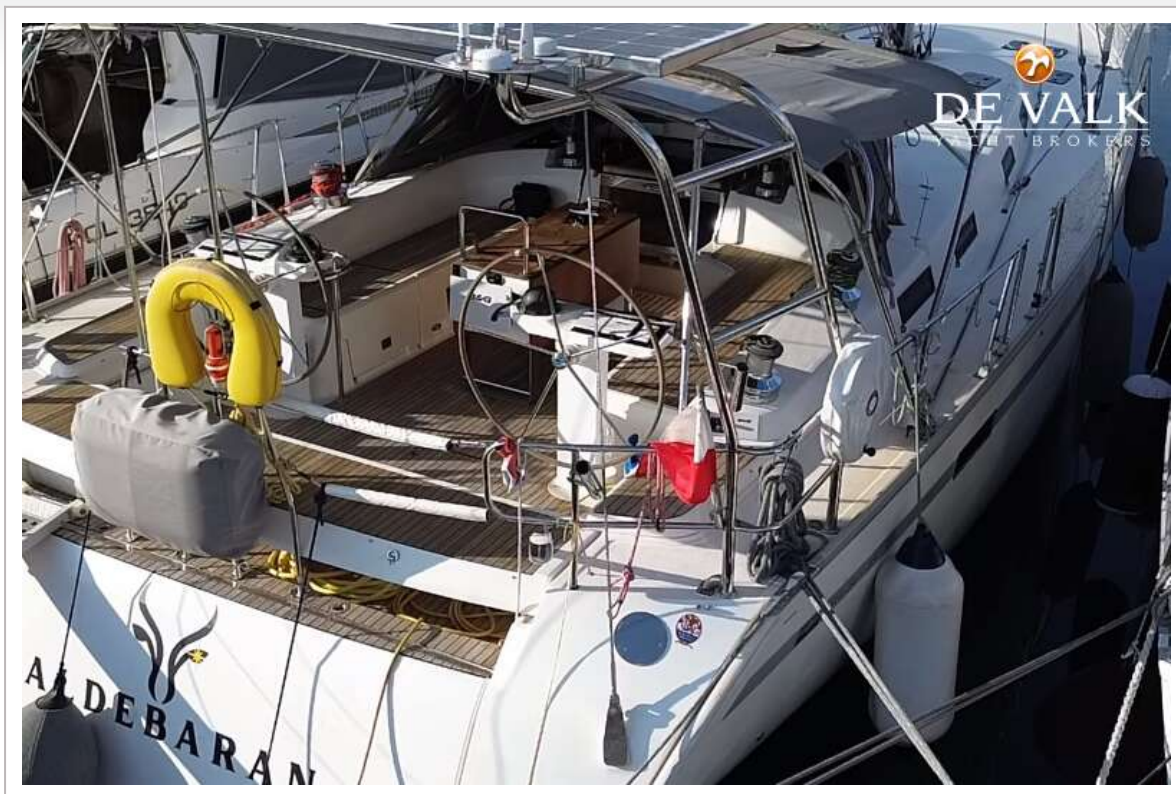
BAVARIA 55 CRUISER



BAVARIA 55 CRUISER



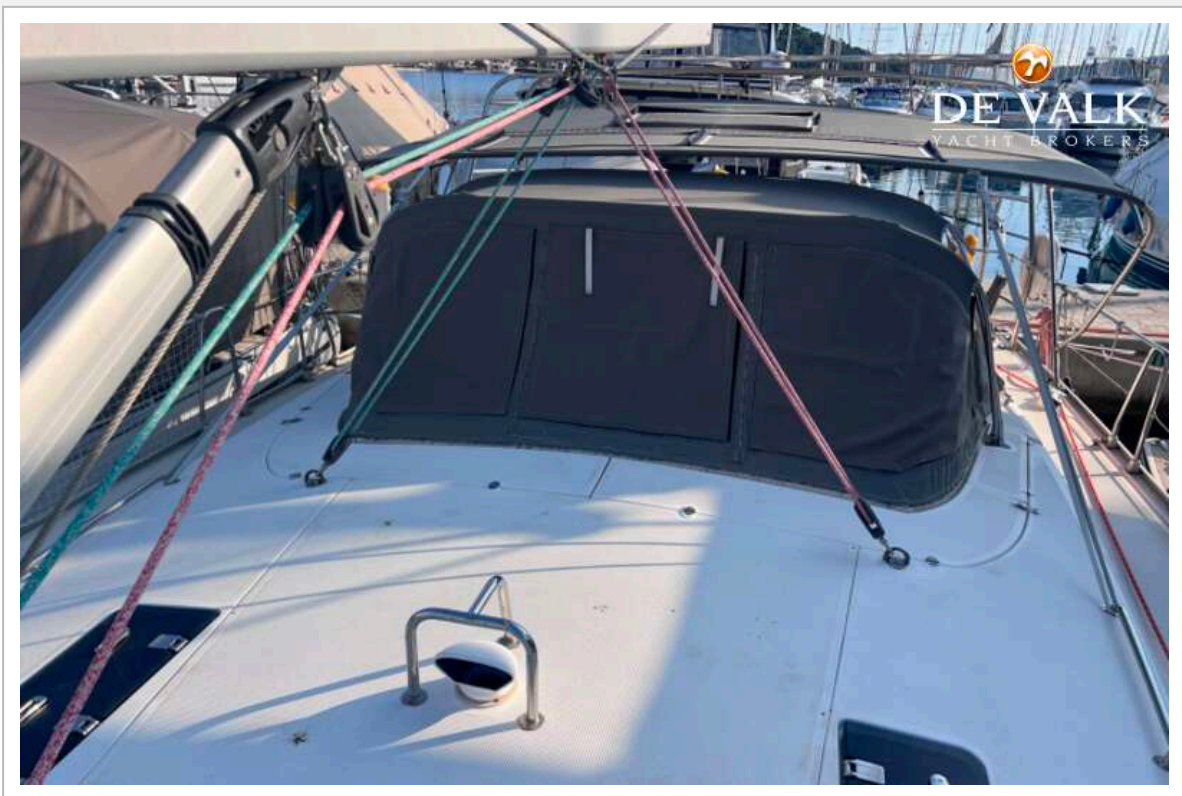
BAVARIA 55 CRUISER



BAVARIA 55 CRUISER



BAVARIA 55 CRUISER



BAVARIA 55 CRUISER



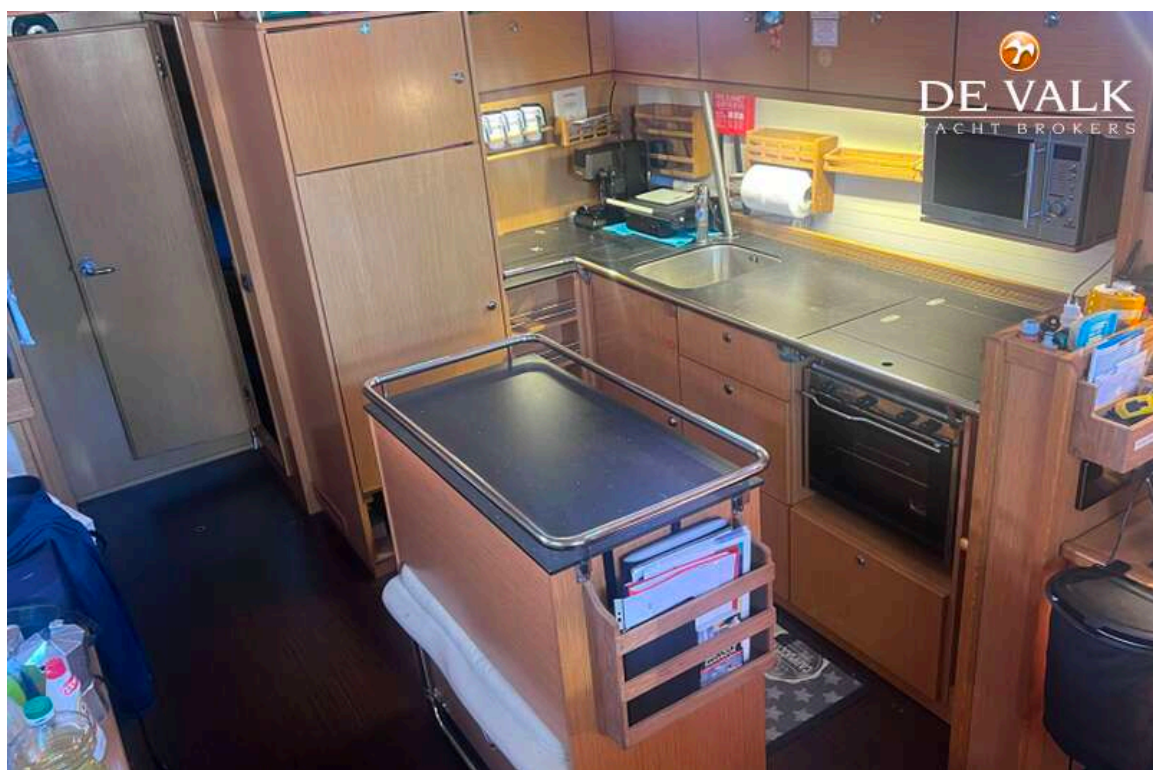
BAVARIA 55 CRUISER



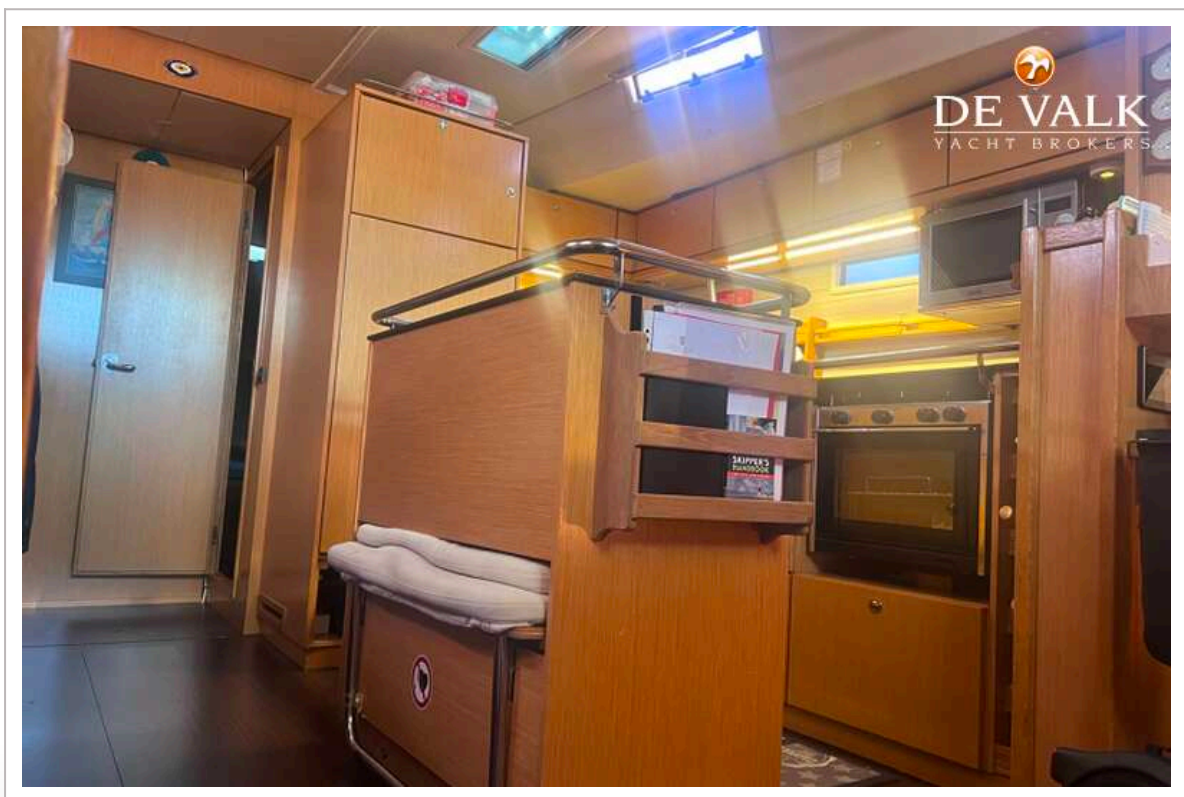
BAVARIA 55 CRUISER



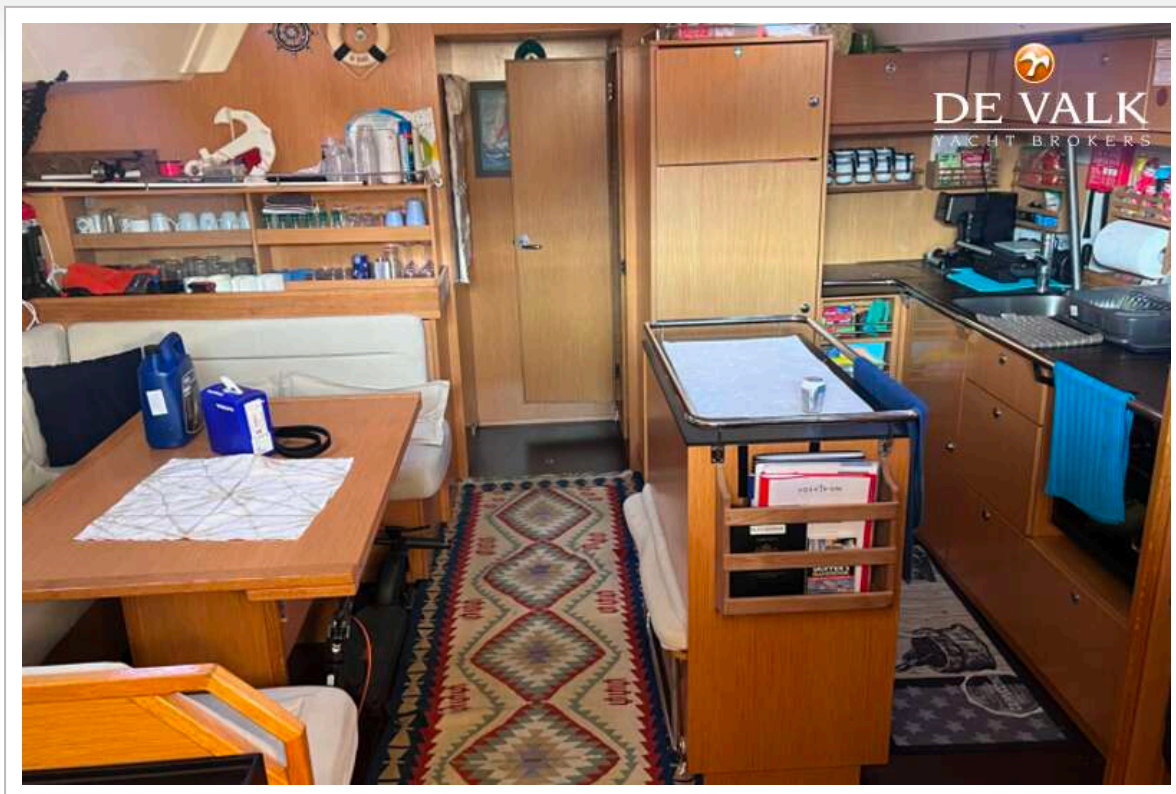
BAVARIA 55 CRUISER



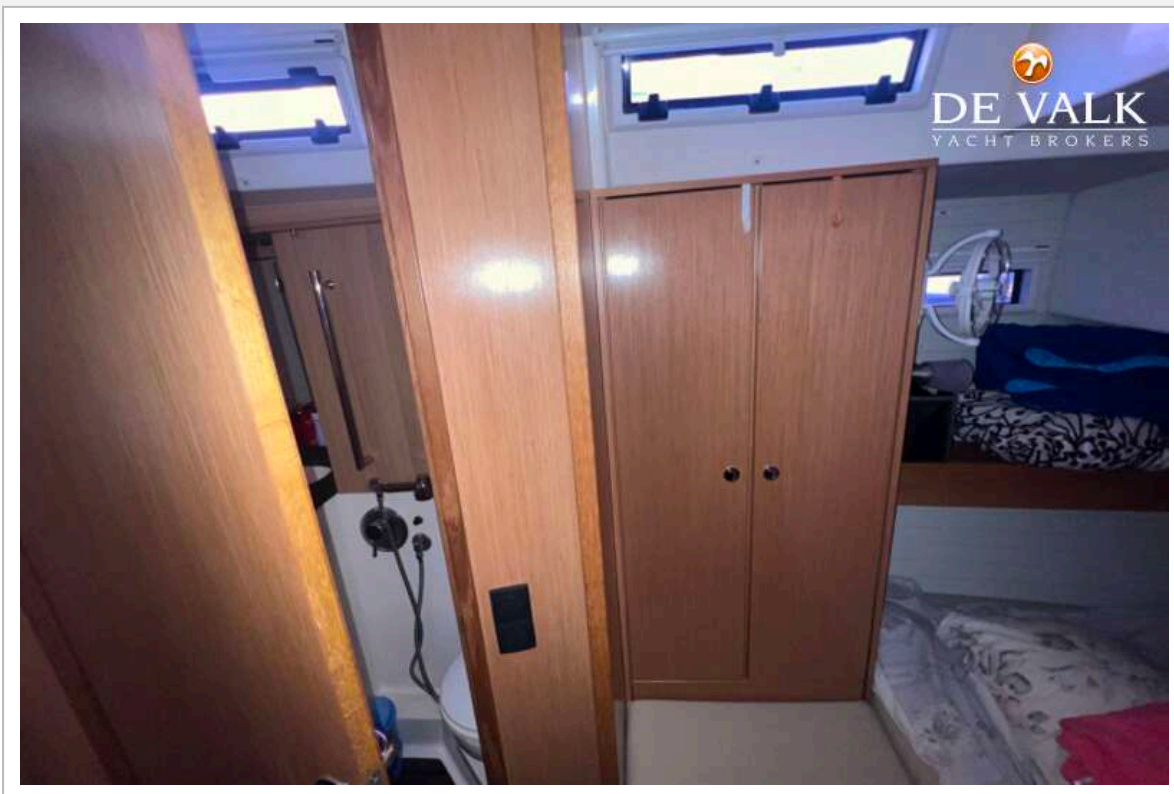
BAVARIA 55 CRUISER



BAVARIA 55 CRUISER



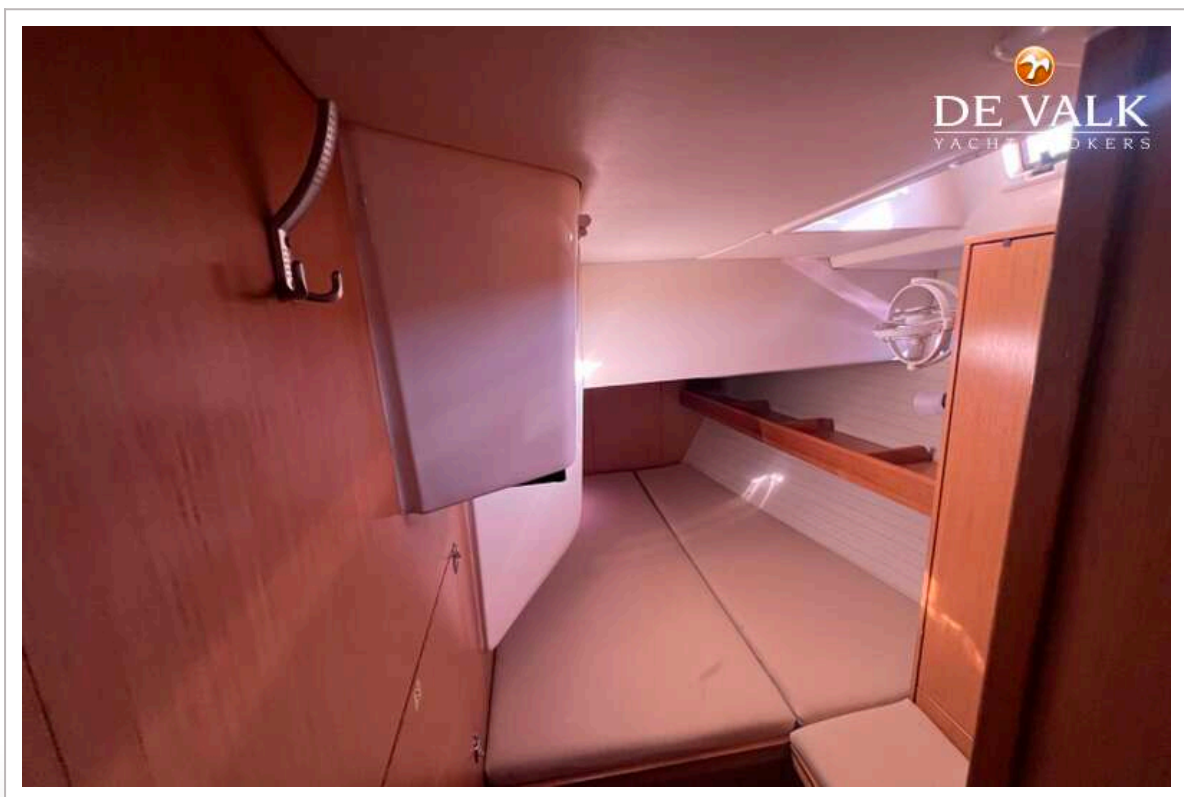
BAVARIA 55 CRUISER



BAVARIA 55 CRUISER



BAVARIA 55 CRUISER



BAVARIA 55 CRUISER



BAVARIA 55 CRUISER

