



DE VALK
YACHT BROKERS



SAFFIER SE 33 UD



DE VALK
YACHT BROKERS

SAFFIER SE 33 UD

BROKER'S COMMENTS

The Saffier SE 33 UD "Mary Jane" combines timeless and modern design with impressive sailing characteristics. This young and fast sailing yacht is perfect for both relaxed trips and sporty sailing, with the well-thought-out hull shape and light weight ensuring optimal performance. Thanks to the electric winches, the yacht is easy to sail single-handed, while the reliable Yanmar diesel engine ensures safety and efficiency under engine power. The comfortable cushion set makes staying on board even more pleasant. In short, "Mary Jane" is an excellently equipped and well-maintained sailing yacht!

Jochem Heijermans

SPECIFICATIONS

Dimensions	10.00 x 2.72 x 1.70 (m)	Builder	Saffier Yachts
Built	2018	Cabins	1
Material	GRP	Berths	4
Engine(s)	1 x Yanmar Yanmar 2YM15 diesel	Hp/Kw	15.00 (hp), 11.04 (kw)
Asking price	€ 189.000 (VAT Paid)	Lying	elsewhere / Not at sales office

CONTACT

Sales office	De Valk Belgium	Telephone	+32 586 80 218
Address	1401 PT Nieuwpoort BE	E-mail	belgium@devalk.nl

DISCLAIMER

These particulars are given in good faith as supplied but cannot be guaranteed.



SAFFIER SE 33 UD

GENERAL

Model	SAFFIER SE 33 UD
Type	sailing yacht
LOA (m)	10,00
LWL (m)	8,50
Beam (m)	2,72
Draft (m)	1,70
Air draft (m)	13,30
Year built	2018
Builder	Saffier Yachts
Country	The Netherlands
Designer	Saffier Yachts
CE norm	A
Hull material	GRP
Hull colour	grey
Hull shape	round-bilged
Superstructure material	GRP
Deck material	GRP
Deck finish	synthetic teak
Superstructure deck finish	synthetic teak
Cockpit deck finish	synthetic teak
Antifouling (year)	2025
Deckhatch	yes
Fuel tank (litre)	60
Level indicator (fuel tank)	yes
Freshwater tank (litre)	40
Level indicator (freshwater)	yes
Blackwater tank (litre)	Anti-odor carbon filter on the waste water tank
Wheel steering	mechanical

ACCOMMODATION



SAFFIER SE 33 UD

Cabins	1
Berths	4
Interior	Modern
Floor	wood
Saloon	yes
Galley	yes
Sink	yes
Fridge	2x (1x Large built-in fridge on a rail system in the cockpit)
Water pressure system	electrical
Owners cabin	v-bed
Toilet	shared
Toilet system	vacuum
Extra info	Custom light gray color of the polyester interior

MACHINERY

No of engines	1
Make	Yanmar
Type	Yanmar 2YM15
HP	15
kW	11.04
Fuel	diesel
Year installed	2018
Engine cooling system	freshwater heat exchanger
Drive	sail-drive
Engine controls	bowden cable
Gearbox	mechanical
Manual bilge pump	yes
Electric bilge pump	yes
Electrical installation	Improved with each cable labeled
Batteries	yes
Start battery	yes



Service battery	yes
Battery charger	yes

NAVIGATION

Electric compass	Raymarine on autopilot
Depth sounder/log	Raymarine
Windset	Raymarine
VHF	Raymarine Ray 90
VHF handheld	Raymarine VHF
Autopilot	Raymarine
Rudder angle indicator	On autopilot
Plotter/GPS	Raymarine Aixom Pro
Navigation lights	yes

EQUIPMENT

Sprayhood	yes
Bimini	Bimini in the color of the bucket cushions
Cockpit cushions	Large cushion to close off the ship's rail
Deck shower	yes
Anchor	yes
Fenders	yes
Mooring lines	yes
Radio	yes

RIGGING

Rigging	sloop
Standing rigging	Rod
Brand mast	Seldén
Material mast	carbon
Spreaders	2x



SAFFIER SE 33 UD

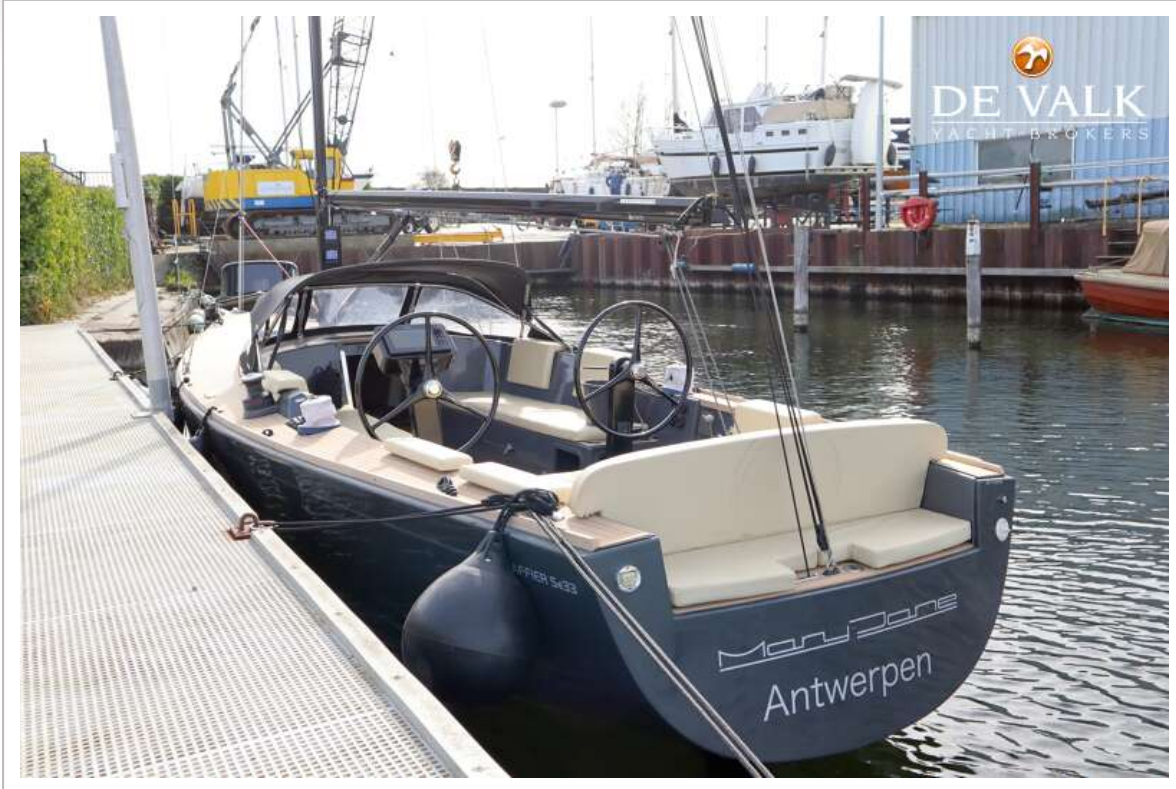
Mainsail	Black Twaron Carbon Fiber (08/2023)
Mainsail cover	yes
Genoa	Black Twaron carbon fiber (08/23)
Code Zero	With 'Harken' roller system
Reefing System	quick-one-line-reefing
Primary sheet winch	2x Harken electric (1x 2025)



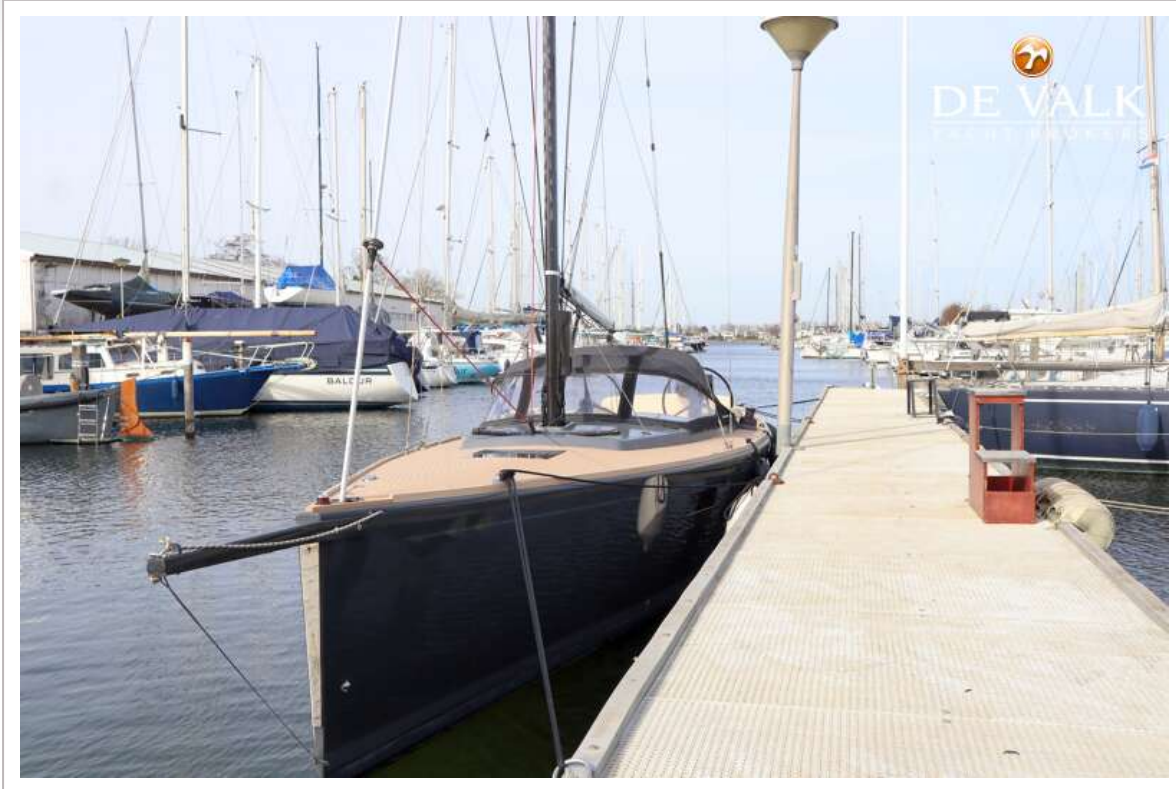
SAFFIER SE 33 UD



SAFFIER SE 33 UD



SAFFIER SE 33 UD



SAFFIER SE 33 UD



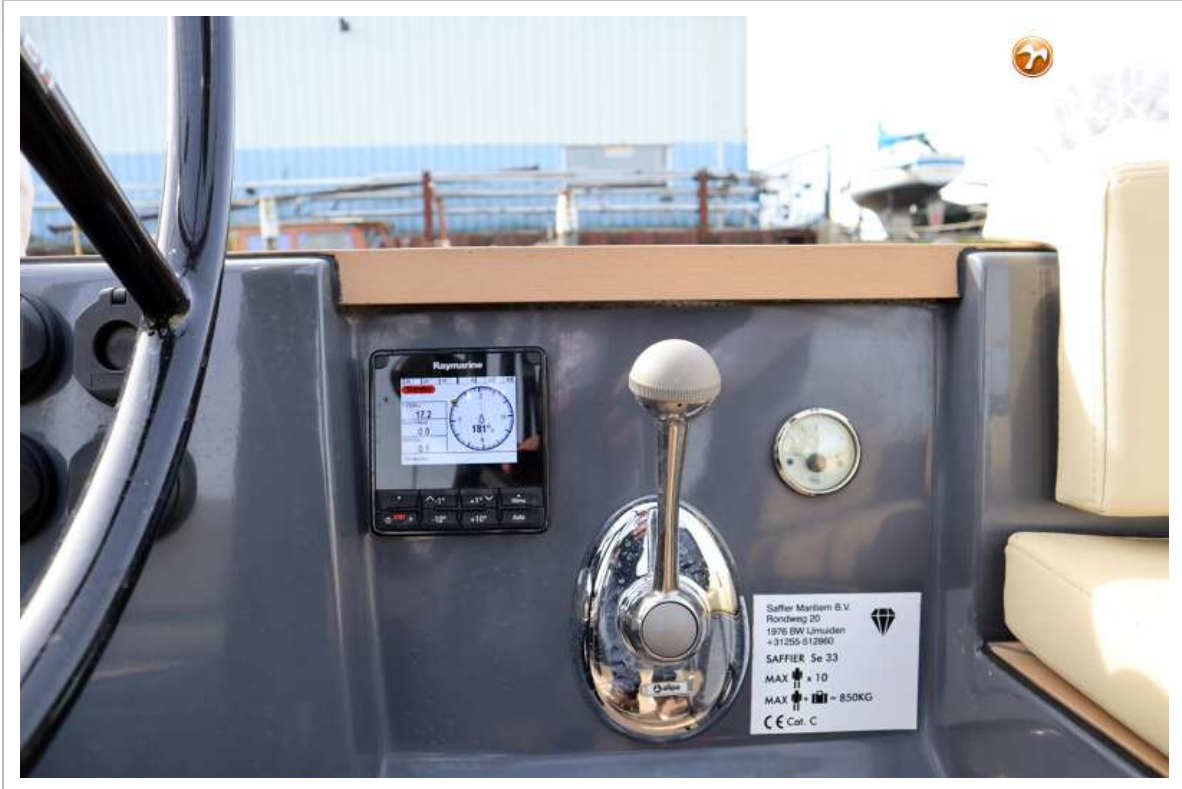
SAFFIER SE 33 UD



SAFFIER SE 33 UD



SAFFIER SE 33 UD



SAFFIER SE 33 UD



SAFFIER SE 33 UD



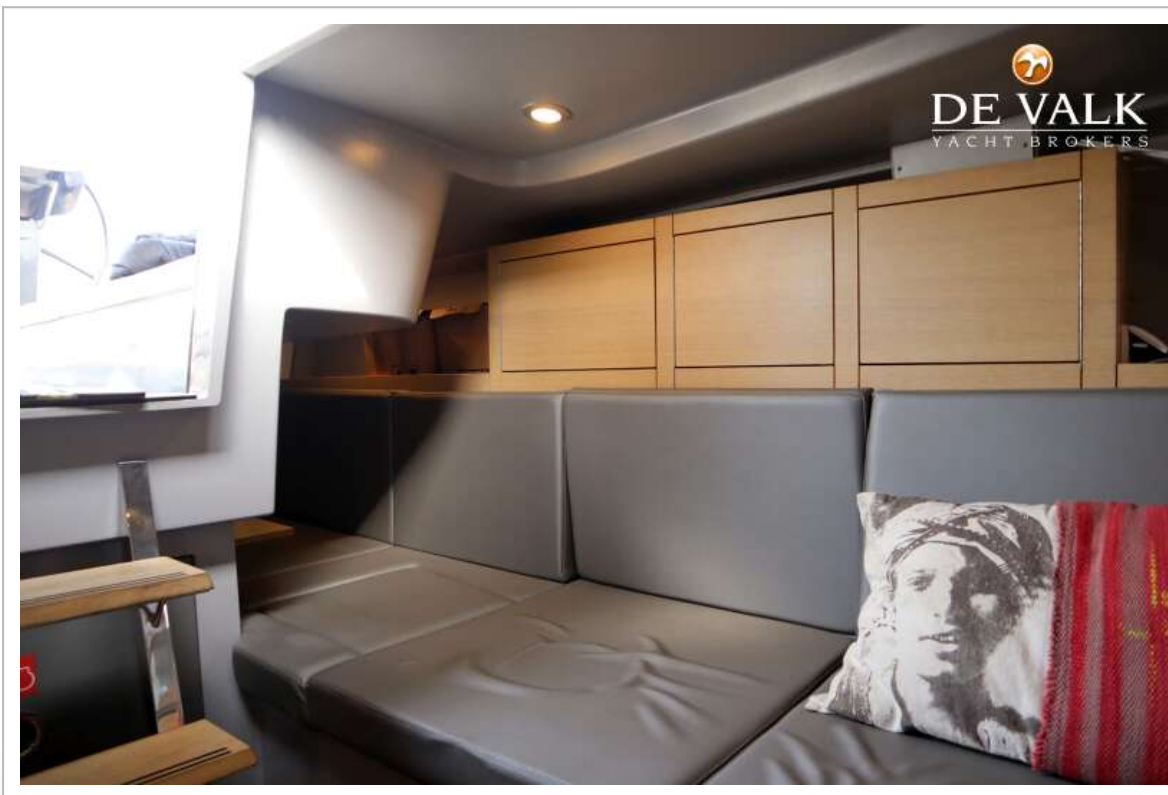
SAFFIER SE 33 UD



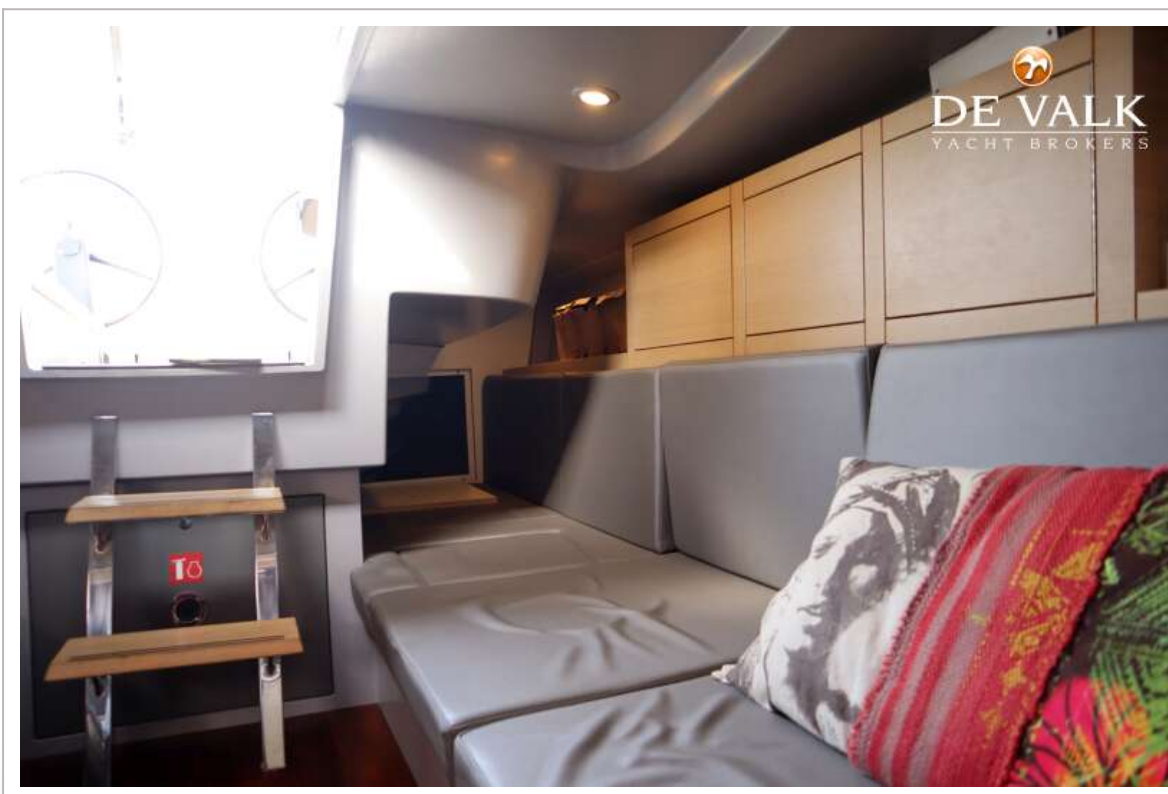
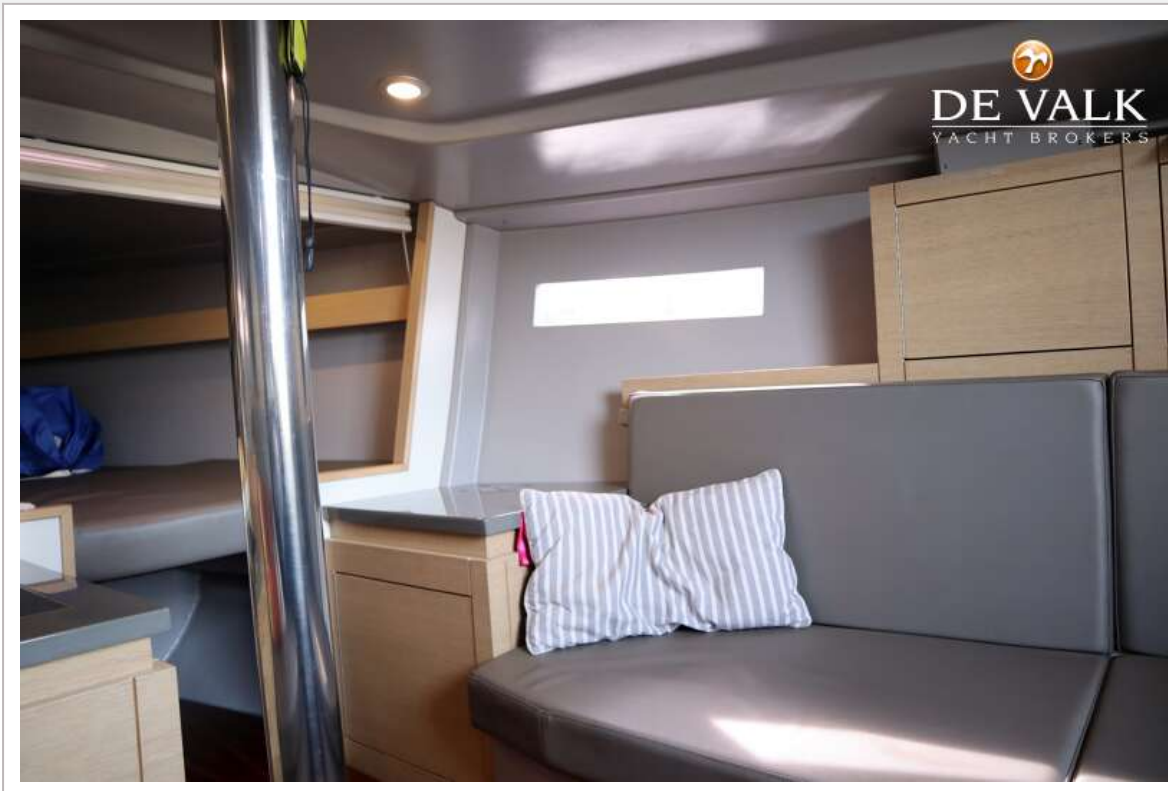
SAFFIER SE 33 UD



SAFFIER SE 33 UD



SAFFIER SE 33 UD



SAFFIER SE 33 UD



SAFFIER SE 33 UD



SAFFIER SE 33 UD



