



## OYSTER 54



## BROKER'S COMMENTS

From the world renowned Oyster Yachts, the 54' is the perfect choice to sail the world seas in comfort and safety, even shorthanded. S/Y "Plan Sea" is in excellent condition, kept like "brand new" by the current owner. Operated by a professional captain, she has been meticulously maintained and constantly fine-tuned for ocean sailing, through winter refits and upgrades. Probably the best 54' on the market with the least mileage and most recent refits (among all, new rigging in May 2026!!) is now ready for the next sea passionate owner. Ready to wander around the 7 seas? Call for more details.

*Diego Cerasi*

## SPECIFICATIONS

<b>Dimensions</b>	16.43 x 4.75 x 2.40 (m)	<b>Builder</b>	Oyster
<b>Built</b>	2008	<b>Cabins</b>	3
<b>Material</b>	GRP	<b>Berths</b>	6
<b>Engine(s)</b>	1 x Yanmar 4JH4-HTBE diesel	<b>Hp/Kw</b>	110.00 (hp), 80.85 (kw)
<b>Asking price</b>	€ 649.000 (VAT Paid)	<b>Lying</b>	at sales office

## CONTACT

<b>Sales office</b>	De Valk Palma	<b>Telephone</b>	+34 971 40 29 11
<b>Address</b>	Port. Cala Nova, Avda. Joan Miro, 327 07015 Palma de Mallorca ES	<b>E-mail</b>	palma@devalk.nl

## DISCLAIMER

These particulars are given in good faith as supplied but cannot be guaranteed.



## GENERAL

Model	OYSTER 54
Type	sailing yacht
LOA (m)	16,43
Beam (m)	4,75
Draft (m)	2,40
Headroom (m)	2,00
Year built	2008
Builder	Oyster
Country	United Kingdom
Hull material	GRP
Hull colour	blue Blue
Keel type	yes
Deck finish	teak
Fuel tank (litre)	polyethylene 850 (professionally cleaned 2024)
Level indicator (fuel tank)	yes
Freshwater tank (litre)	polyethylene 750
Level indicator (freshwater)	yes
Blackwater tank (litre)	polyethylene 2 X 90
Level indicator (blackwater)	yes
Wheel steering	cable steering (professionally overhauled 2024)

## ACCOMMODATION

Cabins	3
Berths	6
Interior	American light Oak
Floor	Teak, 'Chequer-board' style 2018
Heating	AC Reverse Cycle
Air-conditioning	reverse cycle airco 220V Cruisair, 3 units (professionally overhauled. 2024)
Aft Cabin	yes



Dinette	yes
Opening door to cockpit	yes
Galley	yes
Countertop	corian
Sink	stainless steel 2 basin
Cooker	calor gas Force 10 - 3 burners
Oven	yes
Gas alarm	yes
Microwave/oven combi	yes
Fridge	yes
Freezer	yes
Hot water system	220V + engine
Water pressure system	electrical
Kettle	Elctric
Hot water tap	yes
Crockery	Oyster custom made
Owners cabin	double bed With couch and table
Bathroom	en suite
Toilet	en suite
Toilet system	electric
Wash basin	in the bathroom
Shower	en suite
Guest cabin 1	double bed Bow
Wardrobe	hanging/drawers/shelves
Bathroom	separate
Toilet	separate
Toilet system	electric
Wash basin	in the bathroom
Shower	separate
Guest cabin 2	bunk bed
Wardrobe	hanging/drawers/shelves
Bathroom	separate



Toilet	separate
Toilet system	electric
Wash basin	in the bathroom
Shower	separate
Washing machine/dryer combi	yes

## MACHINERY

No of engines	1
Make	Yanmar
Type	4JH4-HTBE
HP	110
kW	80.85
Fuel	diesel
Year of overhaul	By Yanmar 2024
Engine cooling system	freshwater heat exchanger
Shaft seal	Replaced 2022
Engine controls	mechanical
Gearbox	mechanical
Bowthruster	electric MaxPower CT165 24V professionally overhauled 2024
Exhaust	watercooled
Propeller type	folding Gori Propeller with overdrive overhauled 2024
Propeller blades	3
Propeller shaft material	stainless steel
Shaft lubrication	water
Manual bilge pump	yes
Electric bilge pump	yes
Bilge alarm	yes
Generator	silent separator Onan MDKAV 7Kw 220v 50hZ - Overhauled 2024
Running hours generator	2200
Batteries	8 X 6V 440Ah replaced 2022



<b>Start battery</b>	2 X 75A/12V 150Ah replaced 2022
<b>Battery monitor</b>	Mastervolt Alpha Pro III regulator new 2024
<b>Battery charger</b>	Mastervolt Chrage Master 24/70 new 2023
<b>Inverter</b>	Mastervolt Mass Sine Wave
<b>Shorepower</b>	with cable 2 inlet
<b>Watermaker</b>	Seafresh 204A 220VAC 90 L/h - serviced and winterized 2024

## NAVIGATION

<b>Compass</b>	yes
<b>Depth sounder</b>	Raymarine ST60+
<b>Log</b>	Raymarine ST60+
<b>Windset</b>	Raymarine ST60+
<b>VHF</b>	new antenna 2024 Raymarine 240E D-DSC
<b>Autopilot</b>	Raymarine St6002
<b>Radar</b>	Raymarine E120 4kW
<b>Radar/GPS/plotter</b>	Raymarine E80
<b>Navtex</b>	Furuno NX 300
<b>Wifi antenna</b>	yes
<b>Electronic chart(s)</b>	yes
<b>AIS transceiver</b>	yes
<b>EPIRB</b>	Mcmurdo 406 MHz
<b>Navigation lights</b>	Led

## EQUIPMENT

<b>Sprayhood</b>	yes
<b>Sprayhood with grab rail</b>	New 2024
<b>Bimini</b>	New 2024
<b>Cockpit cushions</b>	New 2024
<b>Cockpit table</b>	With integrated fridge
<b>Bathing platform</b>	yes
<b>Boarding ladder</b>	stainless steel



Gangway	Carbon Fiber
Deck shower	Warm and cold
Anchor	CQR Plough 75 kg
Anchor chain	Lofrans 12mm 100m
Anchor 2	Fortress
Anchor chain	10m chain + 80m rope
Chain counter	On the chain
Windlass	electrical Lewmar V4 vertical capstan type 24V
Deck wash	In chain locker
Dinghy	3.2m AVON
Outboard	Yamaha 20hp four stroke new 2024
Davits	stainless steel Simpson S5225
Davits controls	manual Simpson S5225
Life raft	valise (or bag)
Life raft (pers)	valise (or bag) 6
Last life raft survey	2022
Lifejackets	6 self inflating with harnes - new canisters 2023
Danbuoy	yes
Safety lines on deck	yes
Rope cutter	Cordless grinder
Binocular	yes
Radar reflector	Echomax 230R
TV	yes
Radio-cd player	yes
DVD player	yes
iPod connection	yes
Cockpit speakers	yes
Speakers in salon	yes
Speakers in cabin	yes
Clock - barometer	yes
Fire extinguisher	yes
Auto extinguisher system	In engine room



## RIGGING

Rigging	sloop-cutter Fully replaced 2025!!!
Standing rigging	Dyform Fully replaced 2025!!!!
Brand mast	Seldén
Material mast	aluminium coated
Spreaders	3
Keel stepped mast	yes
Mainsail	2014 - professionally refurbished 2024 North Sails
Fully battened mainsail	In mast furled
Genoa	2014 - cleaned and refurbished by North Sails
Genoa furler	Electric Selden installed new 2024
Spinnaker	2014 - never used.
Removable innerforestay	Never used 2022
Stormjib	Never used 2022
Backstay adjuster	hydraulic
Boomvang	mechanical and tackle
Primary sheet winch	Lewmar Electric serviced 2024
Genoa sheetwinches	Lewmar Electric serviced 2024
Halyard winches	2 on the mast - serviced 2024
Multifunctional winches	Main sail sheet, vang, haul out, boom lift
Winchcovers	Full
Spi-pole	carbon





# OYSTER 54







## OYSTER 54



# OYSTER 54

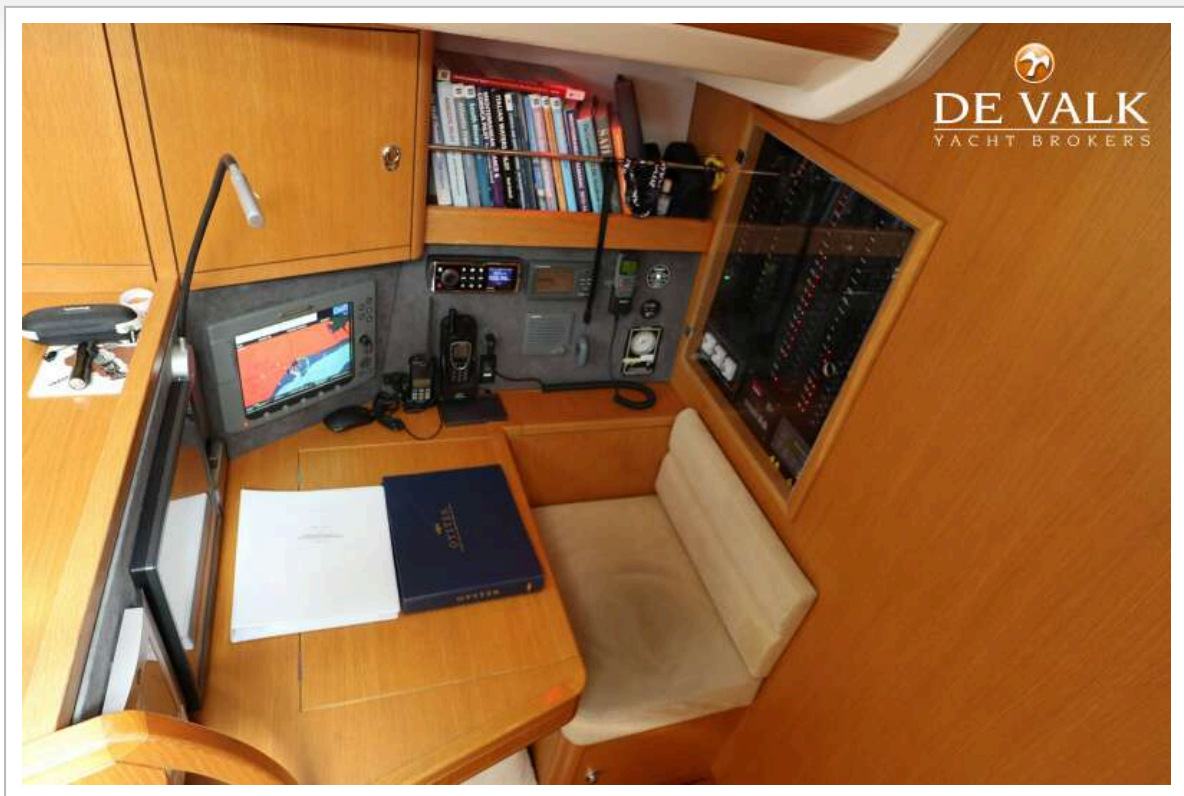




## OYSTER 54

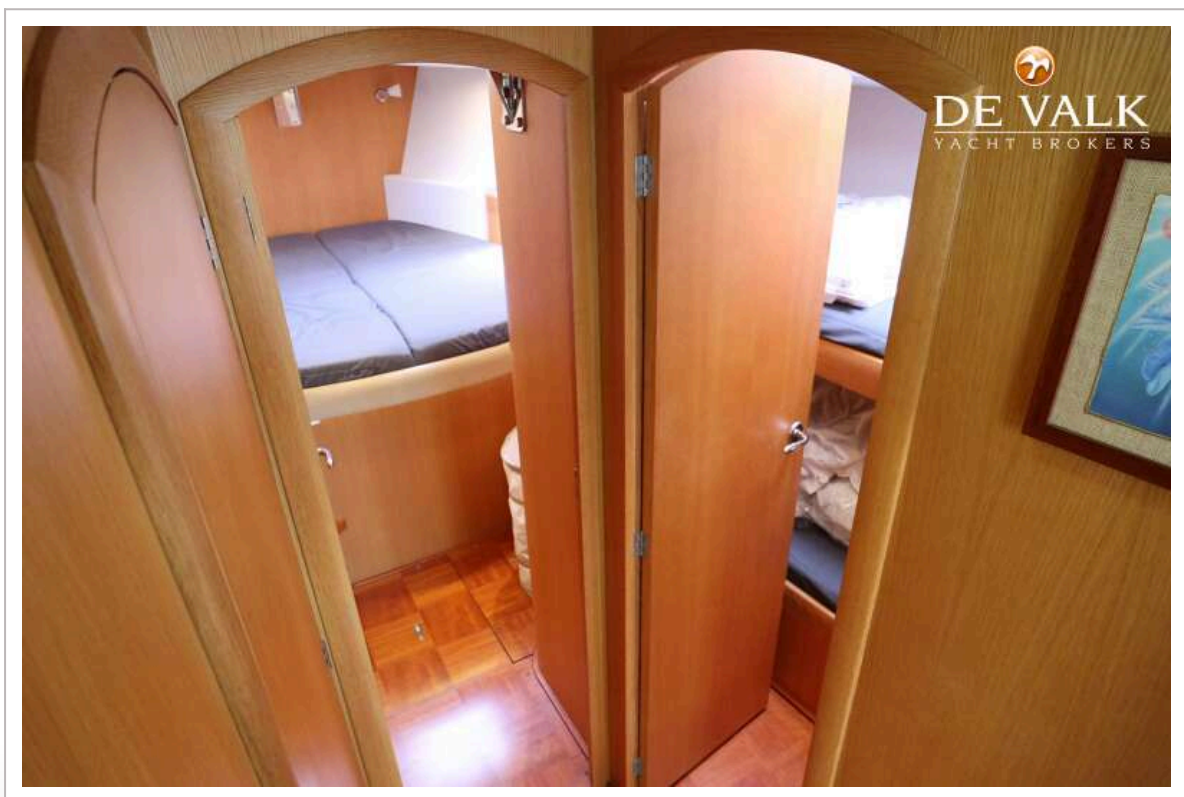


# OYSTER 54

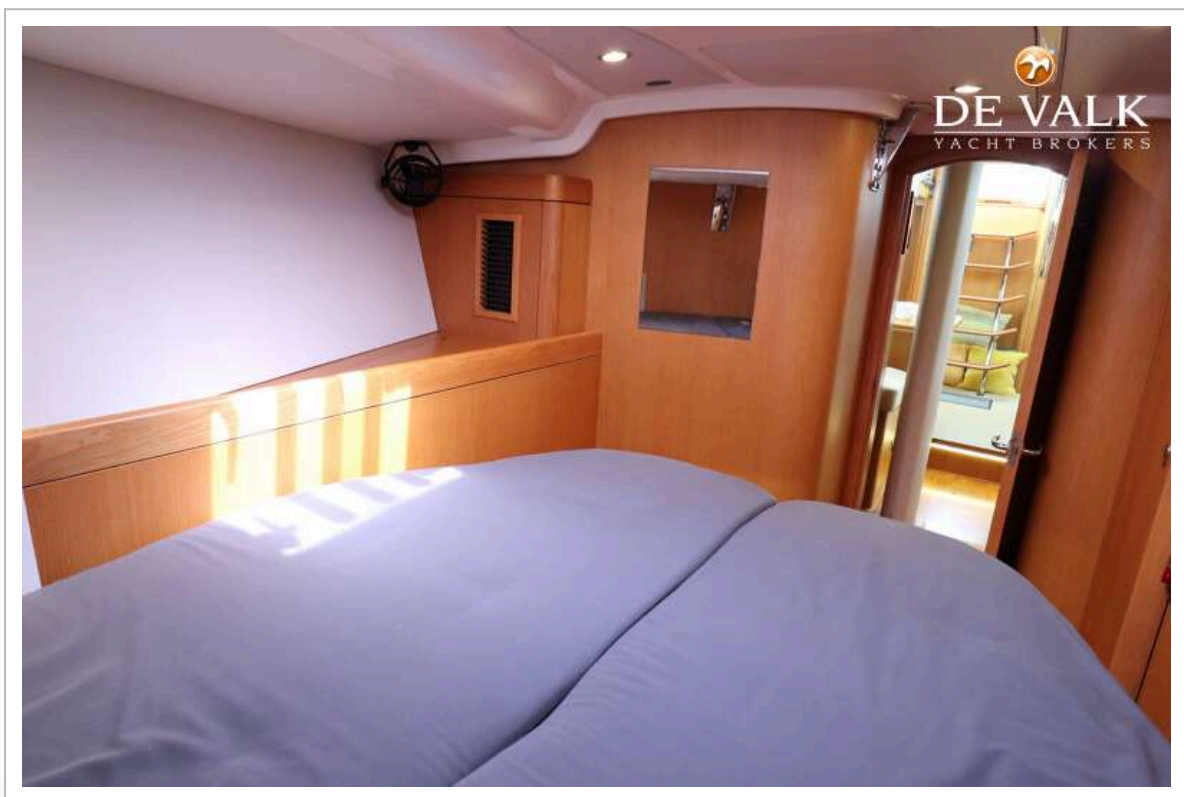
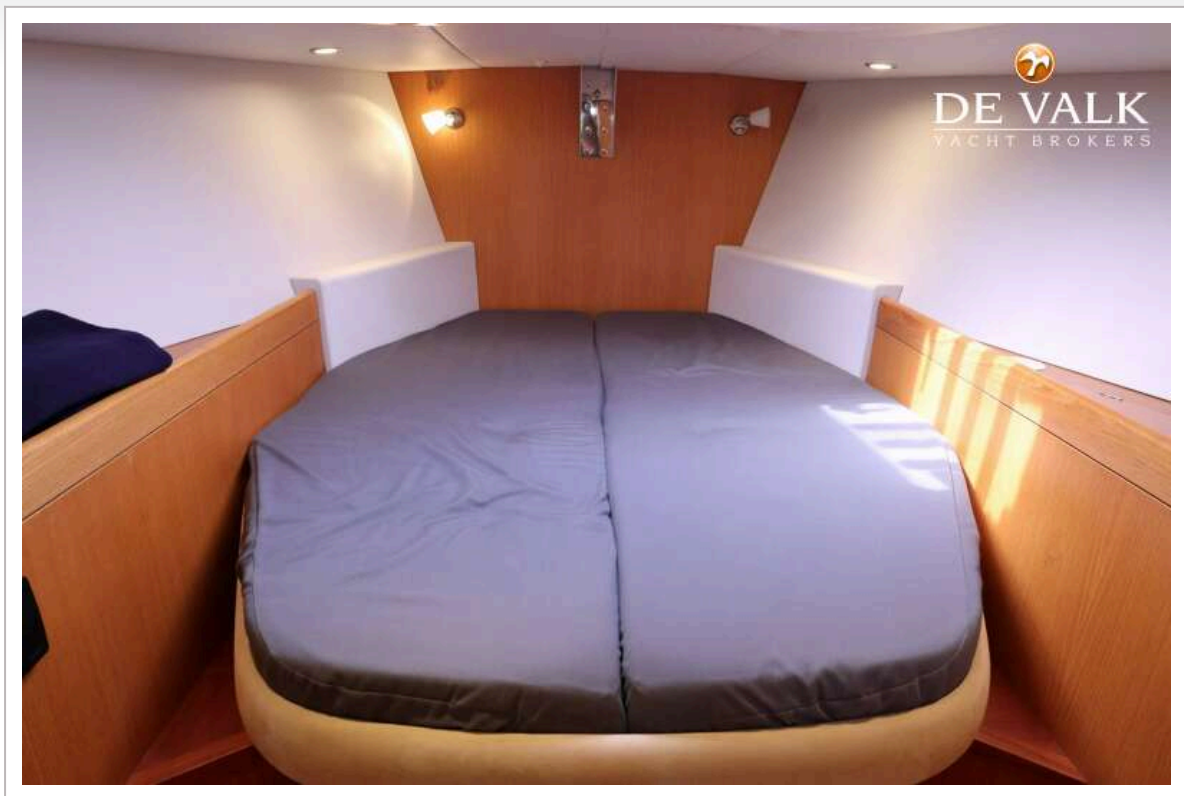




## OYSTER 54

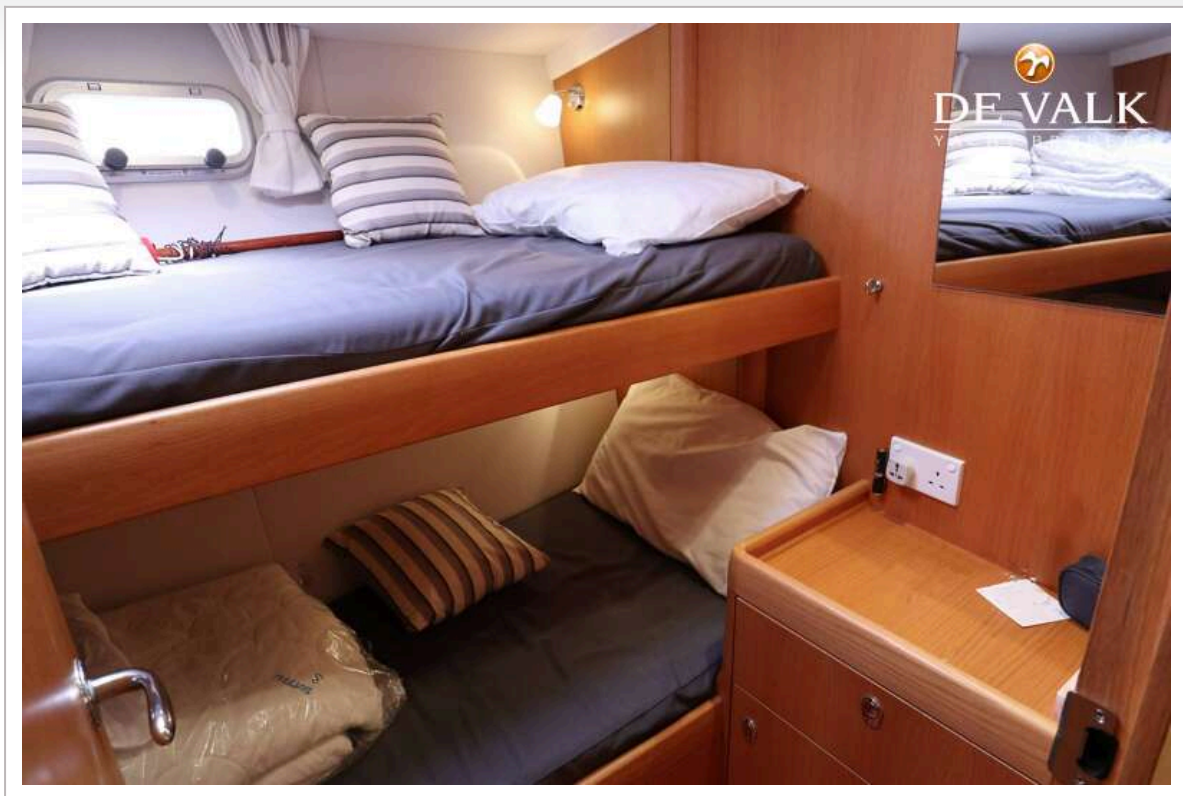


## OYSTER 54





## OYSTER 54

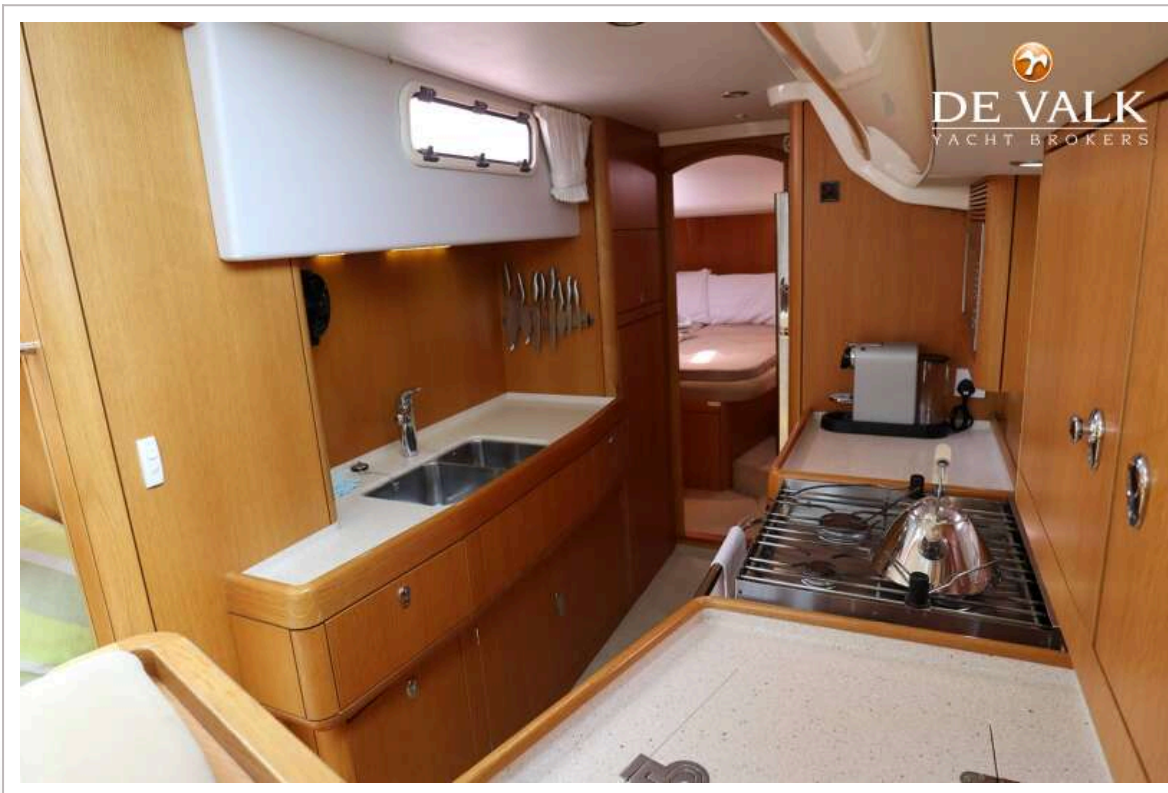


## OYSTER 54

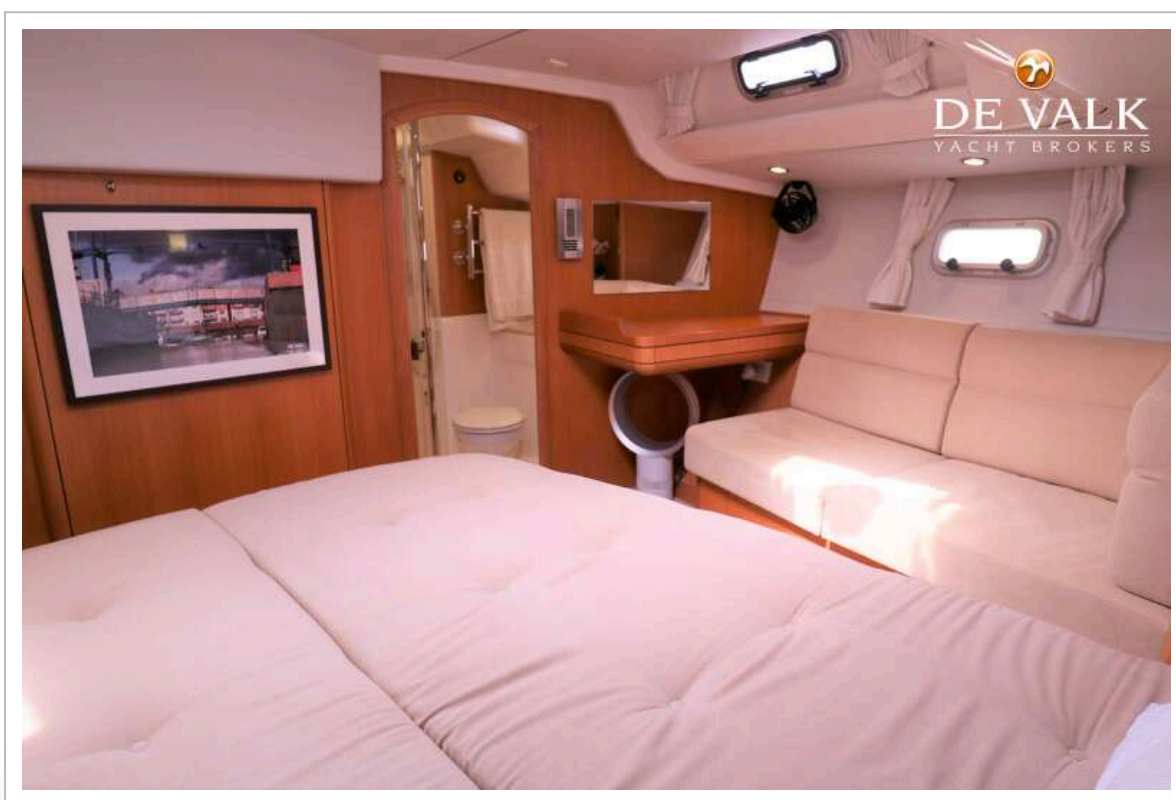
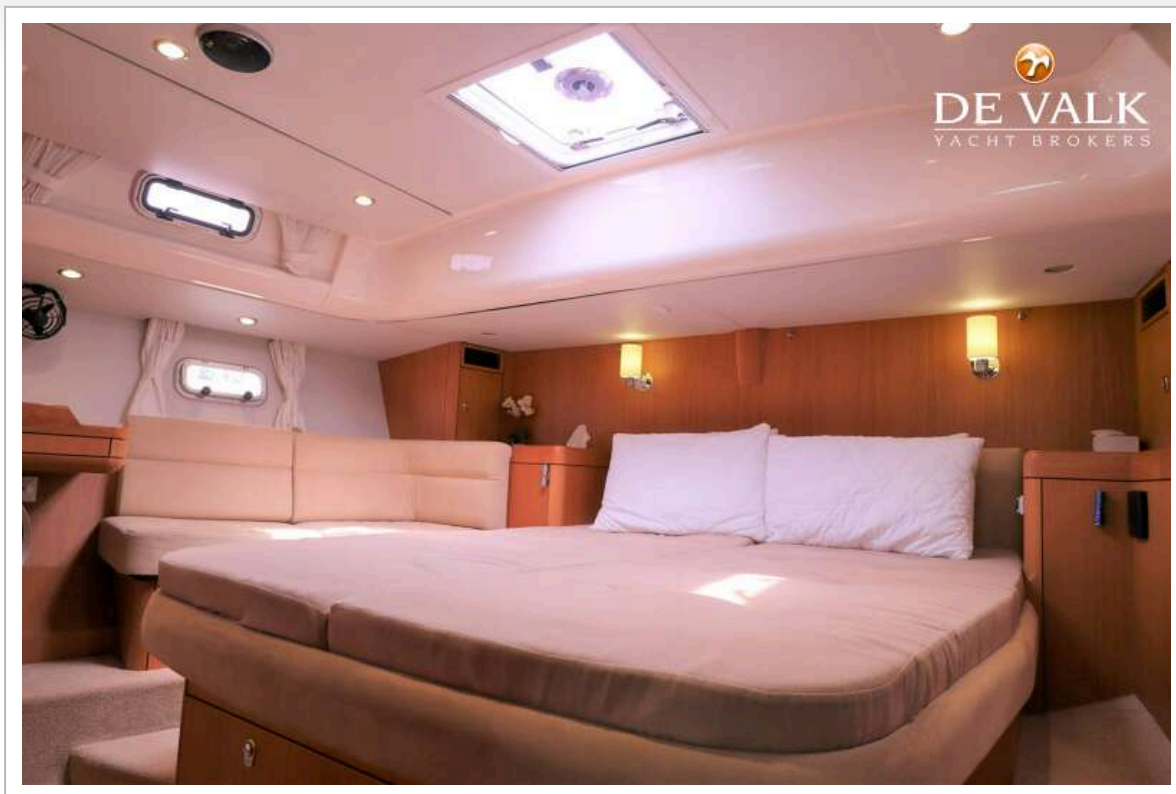




# OYSTER 54



## OYSTER 54



## OYSTER 54

