



DE VALK
YACHT BROKERS



FRANS MAAS CALYPSO 42



DE VALK
YACHT BROKERS

BROKER'S COMMENTS

A very strong and seaworthy ocean-going long-keel round-bilged steel ketch with a protected cockpit, a powerful engine, abundant storage and big tanks. Thirty five years in current ownership. Over 135,000 miles logged since 1990, including an Atlantic crossing, five crossings of the Pacific plus a season in Alaska. Labarque has been based in South East Asia since 2007, completing annual circuits between Phuket and Bali. Labarque is currently being used as a 'country cottage' under cover at Pangkor Marina, Lumut, Malaysia and would be happy to start a new adventure with her new owner!

Jeroen Kool

SPECIFICATIONS

Dimensions	12.95 x 3.81 x 1,50 / 1.60 (m)	Builder	Fa. Gebres. MAAS, Scheeps en Jachtwerf
Built	1966	Cabins	3
Material	Steel	Berths	6
Engine(s)	1 x Perkins Sabre M92 diesel	Hp/Kw	86.00 (hp), 63.30 (kw)
Asking price	£ 70.000 (VAT Not paid)	Lying	Malaysia

CONTACT

Sales office	De Valk Asia	Telephone	0601114078055
Address		E-mail	asia@devalk.nl
	AS		

DISCLAIMER

These particulars are given in good faith as supplied but cannot be guaranteed.



GENERAL

Model	FRANS MAAS CALYPSO 42
Type	sailing yacht
LOA (m)	12,95
LWL (m)	10,70
Beam (m)	3,81
Draft (m)	1,60
Draft min (m)	1,50
Air draft (m)	18,00
Air draft min (m)	3,00
Headroom (m)	2,00
Year built	1966
Builder	Fa. Gebres. MAAS, Scheeps en Jachtwerf
Country	The Netherlands
Designer	Frans Maas
Displacement (t)	15
Gross tonnage	20
Net tonnage	15
CE norm	NA
Hull material	steel
Hull colour	grey , light
Hull thickness (mm)	4
Hull shape	round-bilged Full-keel
Keel type	long keel
Superstructure material	wood epoxy
Deck material	wood epoxy
Deck finish	non-skid paint
Superstructure deck finish	non-skid paint
Window frame	stainless steel
Window material	tempered glass
Fuel tank (litre)	steel 2 tanks, total 1500l



Freshwater tank (litre)	steel 1050l, epoxy coated
Blackwater tank (litre)	polyethylene 30l
Wheel steering	hydraulic
Emergency tiller	yes

ACCOMMODATION

Cabins	3
Berths	6
Interior	mahogany Honduras
Floor	teak 5mm teak and holly
Headroom saloon (m)	2
Heating	diesel ducted hot air Eberspacher D3
Navigation center	yes
Chart table	yes
Aft Cabin	yes
Dinette	Folding saloon table
Galley	yes
Countertop	stainless steel 316L
Sink	stainless steel
Cooker	methylated spirit Gimballed 2-burner Origo stove
Fridge	Apicool 2022
Freezer	Apicool 2022
Owners cabin	double bed + single bed
Bed length (m)	2
Wardrobe	hanging and drawers
Bathroom	en suite
Toilet	en suite
Toilet system	manual
Shower	en suite
Guest cabin 1	v-bed
Bed length (m)	2,2



Wardrobe	hanging and drawers
Bathroom	en suite
Toilet	en suite
Toilet system	manual
Wash basin	in the bathroom
Shower	en suite

MACHINERY

No of engines	1
Make	Perkins Sabre
Type	M92
HP	86
kW	63.30
Fuel	diesel
Year installed	2004
Maximum speed (kn)	8,3
Cruising speed (kn)	5
Consumption (l/hr)	2,7
Range (nm)	2600
Engine hours	7000
Engine cooling system	freshwater heat exchanger With water-lift muffler
Drive	shaft
Engine controls	bowden cable
Gearbox	hydraulic Borg Warner 2004
Propeller type	fixed
Propeller blades	3
Propeller shaft material	stainless steel 50mm 316
Shaft lubrication	grease
Manual bilge pump	yes
Electric bilge pump	2x 24v Whale
Generator	dry exhaust Honda, 2kW



Start battery	2x 105 AH AGM, 24v
Service battery	4x 105 AH AGM, 24v
Battery charger	Victron 24V
Inverter	2x Victron
Wind generator	Ampair 100 incl hydro generator
Solar panel	4x 50W 4x 100W
Shorepower	with cable
Insulation transformer	3kW
Extra info	24v - 12v converters

NAVIGATION

Compass	yes
Depth sounder	Furuno FCV 600L
VHF	Icom IC-424G
Autopilot	Raymarine tiller, 3x ST1000s
Wind vane steering install.	Saye's Rig
Rudder angle indicator	yes
Radar	yes
Radar/plotter	Furuno 1623
Personal computer	Asus, touch screen
Electronic chart(s)	Electronic
AIS transponder	Vesper Marine Watchmate
Navigation lights	yes

EQUIPMENT

Fixed windscreen	yes
Fixed hardtop	yes
Cockpit cushions	yes
Cockpit table	yes
Boarding ladder	stainless steel
Anchor	CQR Plough 34kg



Anchor chain	125m 10mm
Anchor 2	Bruce 30kg
Windlass	electrical Lofrans Falkon 1200W
Dinghy	inflatable Avon 2.9M Hypalon, Avon Redcrest
Outboard	Yamaha 2hp 2 stroke
Outboard support	2x
Davits	stainless steel
Davits controls	manual
Sea railing	stainless steel
Lifejackets	7x
Safety harness	11x
Lifebuoy	yes
Fenders	yes
Mooring lines	yes
Spare parts	yes
Tools	yes
TV	32"
Clock - barometer	yes
Fire extinguisher	yes
Extra info	Diving Equipment: Powerdive 12v
Extra info	3 extra anchors

RIGGING

Rigging	ketch
Standing rigging	wire
Brand mast	Z-Spar
Material mast	aluminium
Spreaders	2
Mainsail	Dacron
Mainsail cover	yes
Mizzen	yes



Mizzen sailcover	yes
Genoa	yes
Genoa furler	Hood Seafurl
Staysail	yes
Trysail	yes
Stormjib	yes
Reefing System	slabreefing
Genoa sheetwinches	Anderson 46ST
Halyard winches	Anderson 40ST, 28ST, 12ST
Reefing winch	Harken for Furler

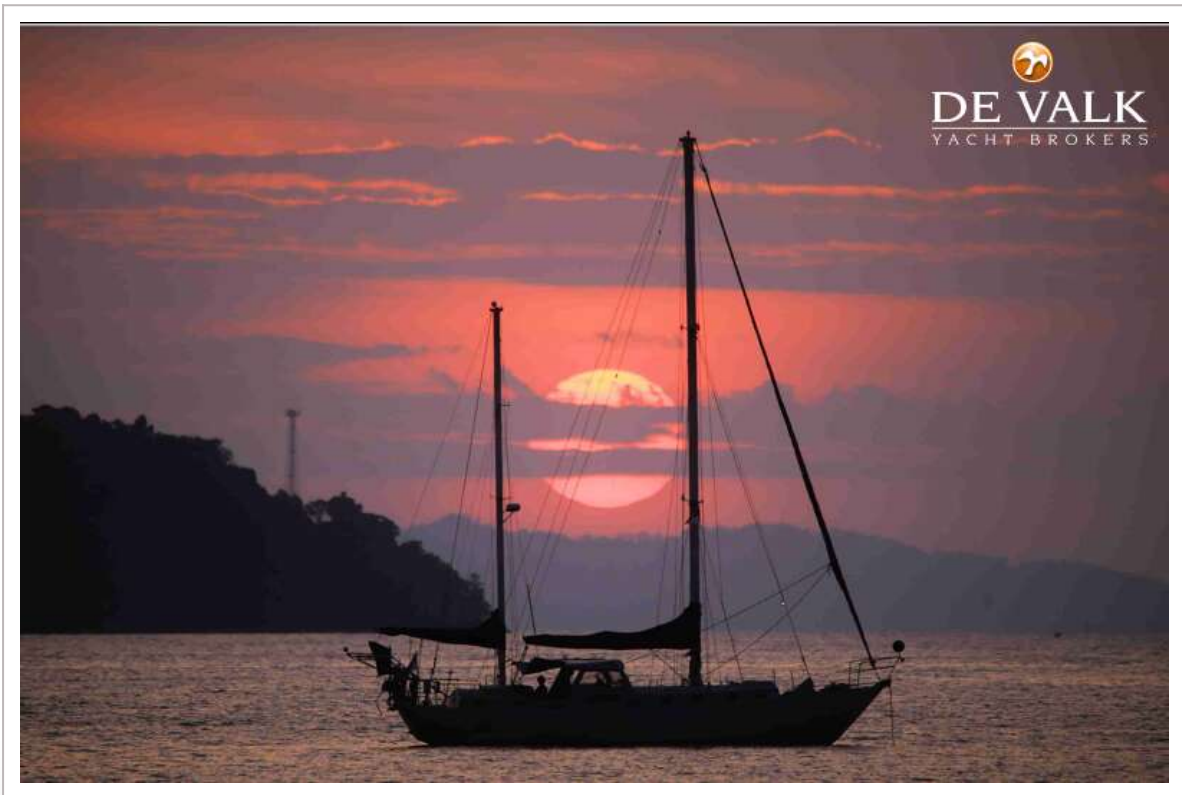


FRANS MAAS CALYPSO 42



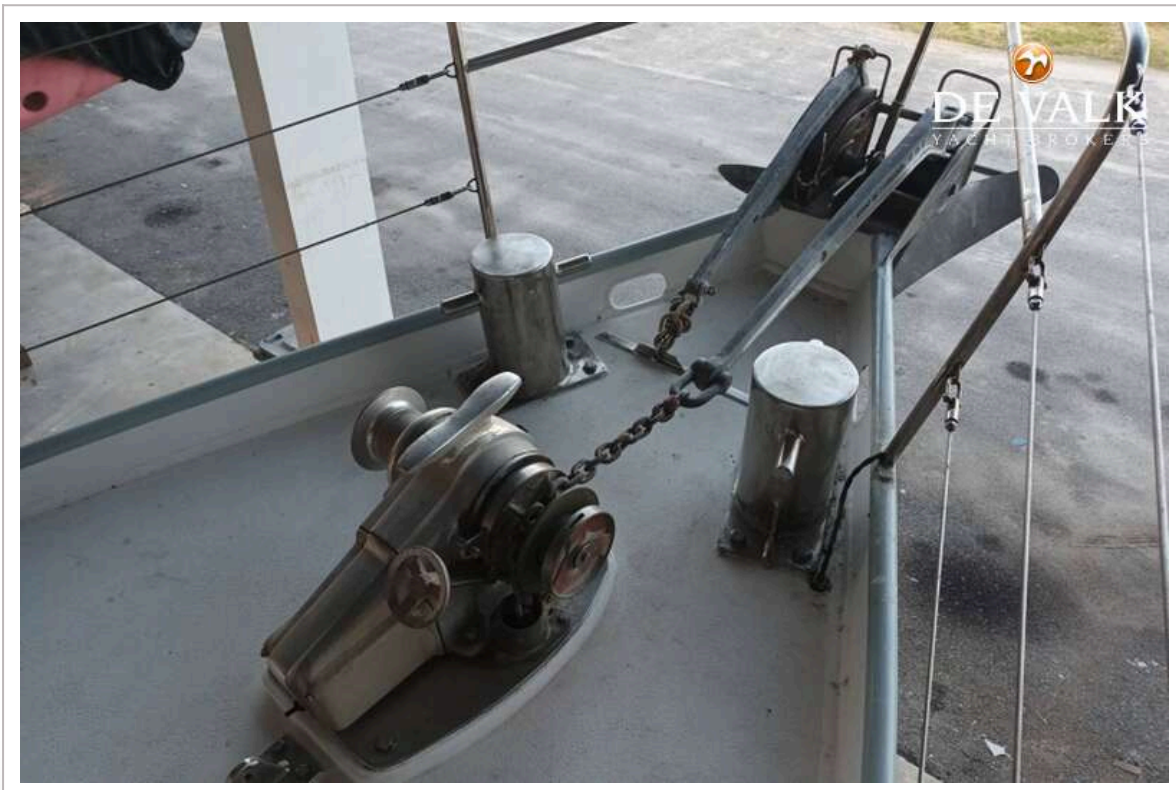
FRANS MAAS CALYPSO 42





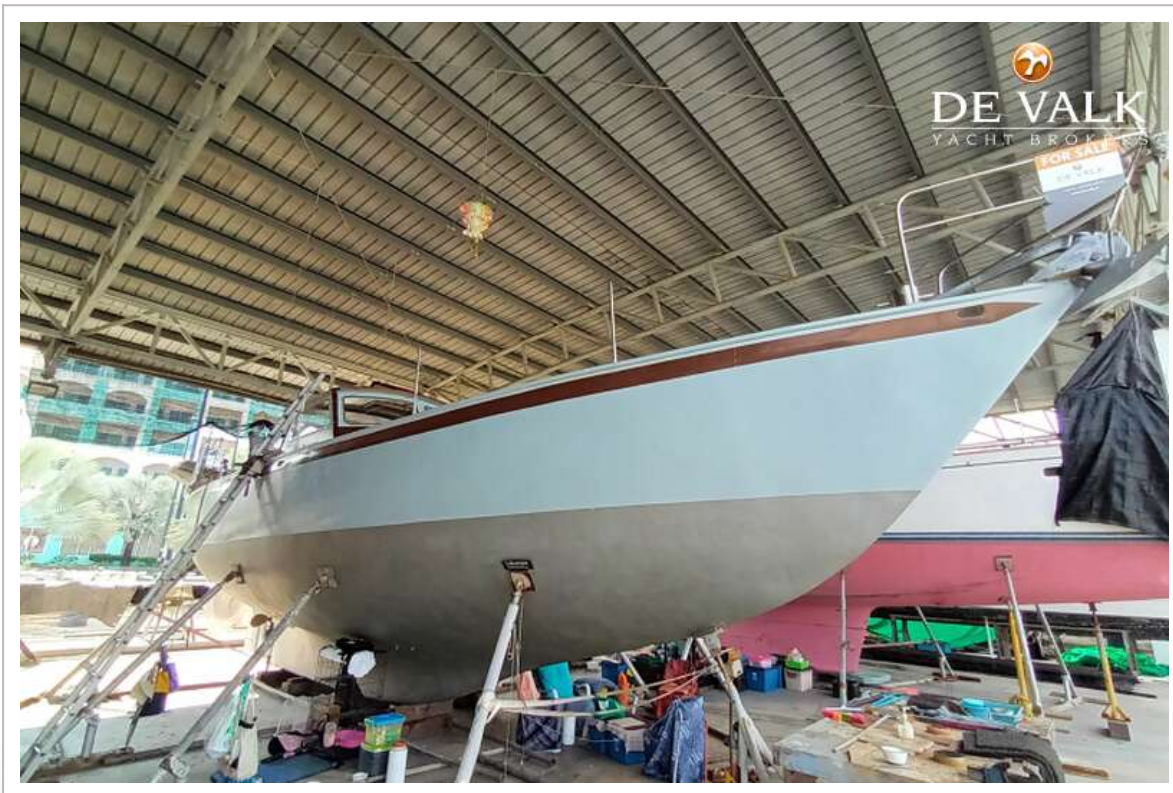


FRANS MAAS CALYPSO 42





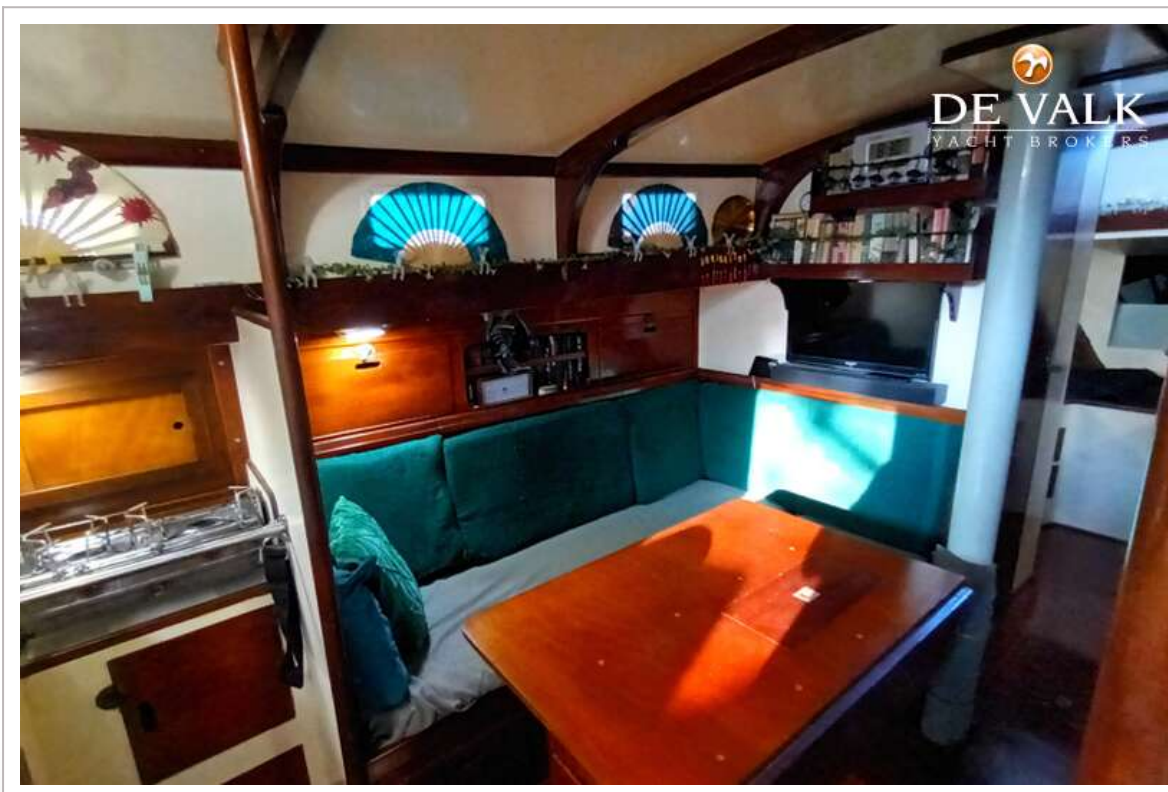
FRANS MAAS CALYPSO 42



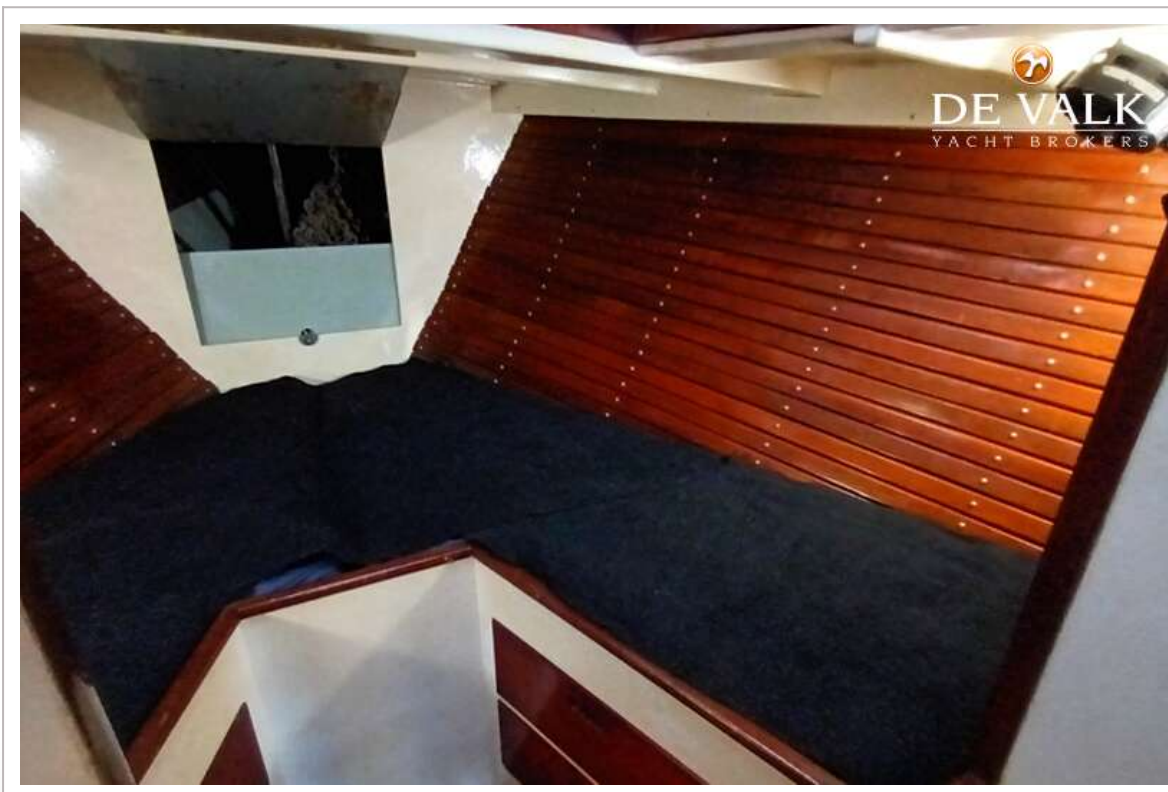
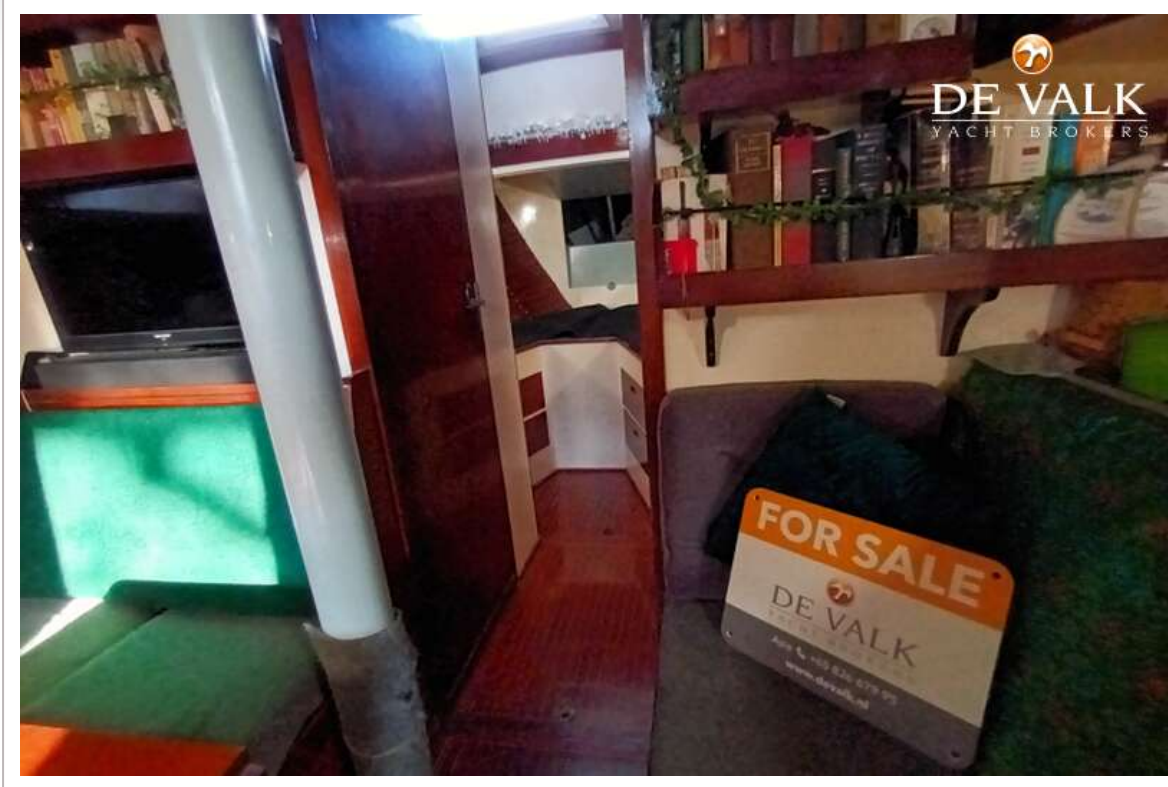
FRANS MAAS CALYPSO 42



FRANS MAAS CALYPSO 42

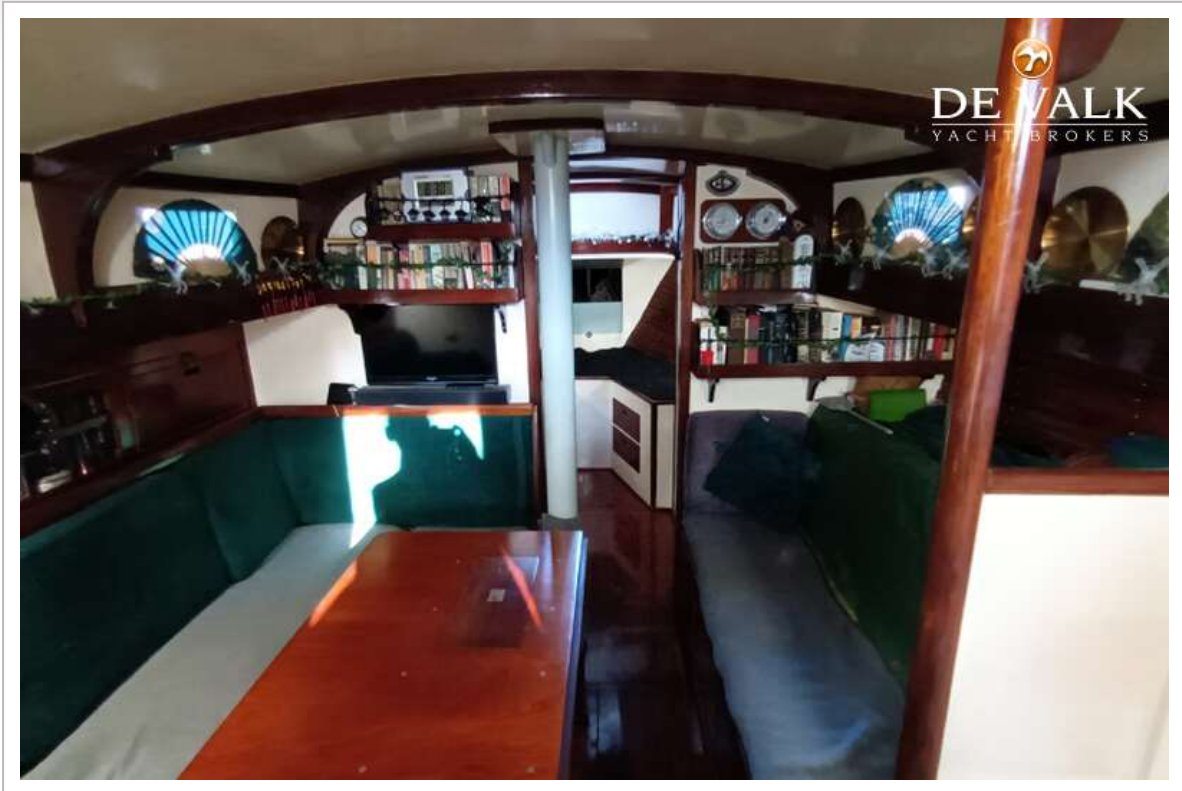


FRANS MAAS CALYPSO 42

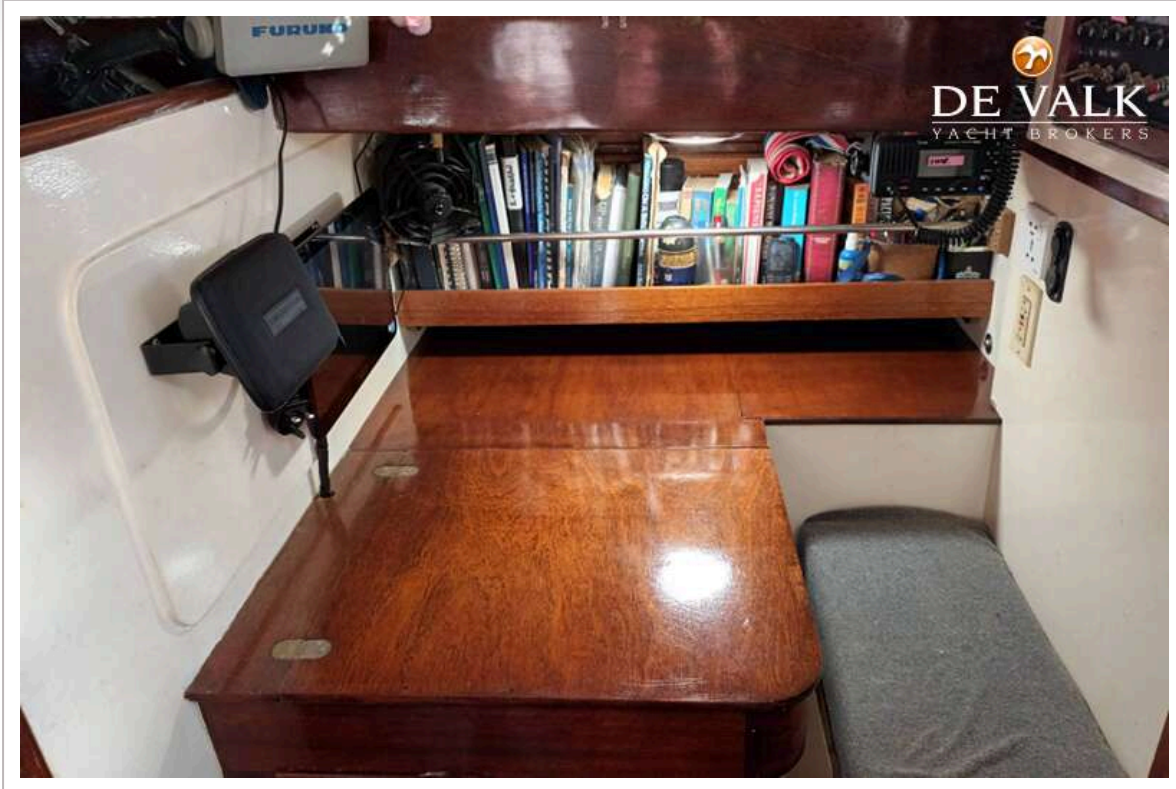




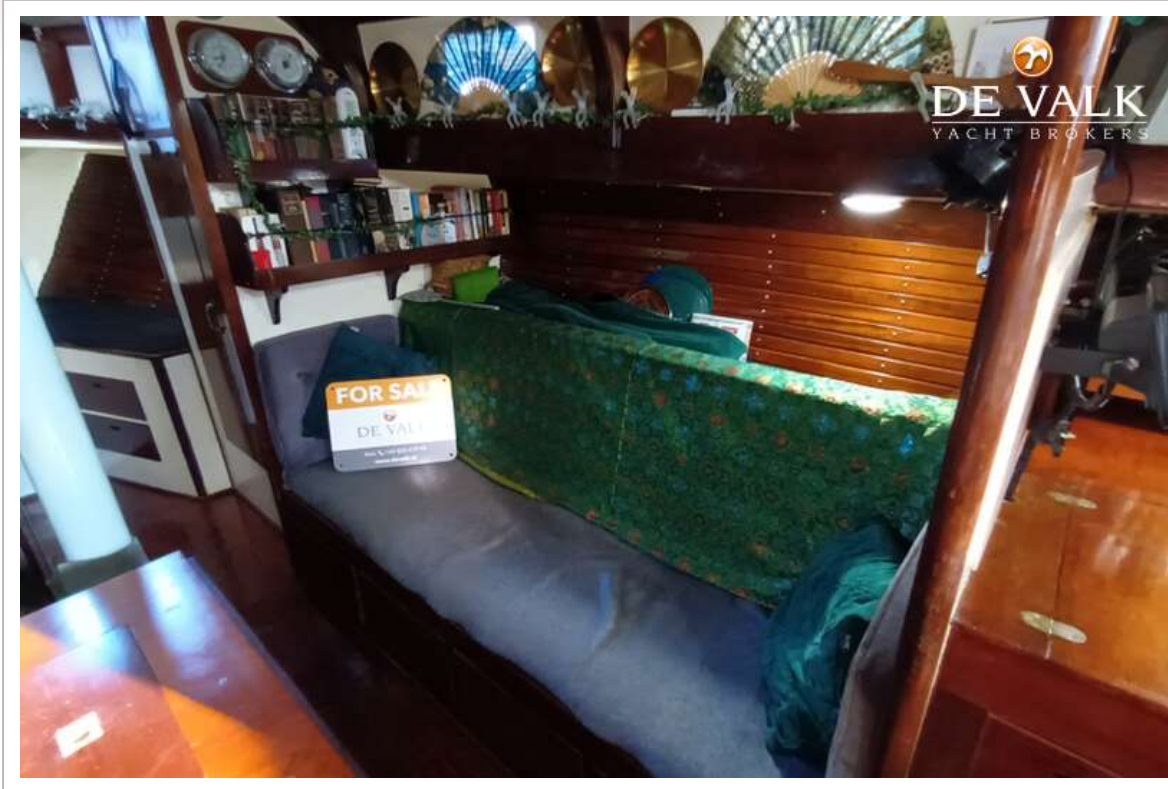
FRANS MAAS CALYPSO 42



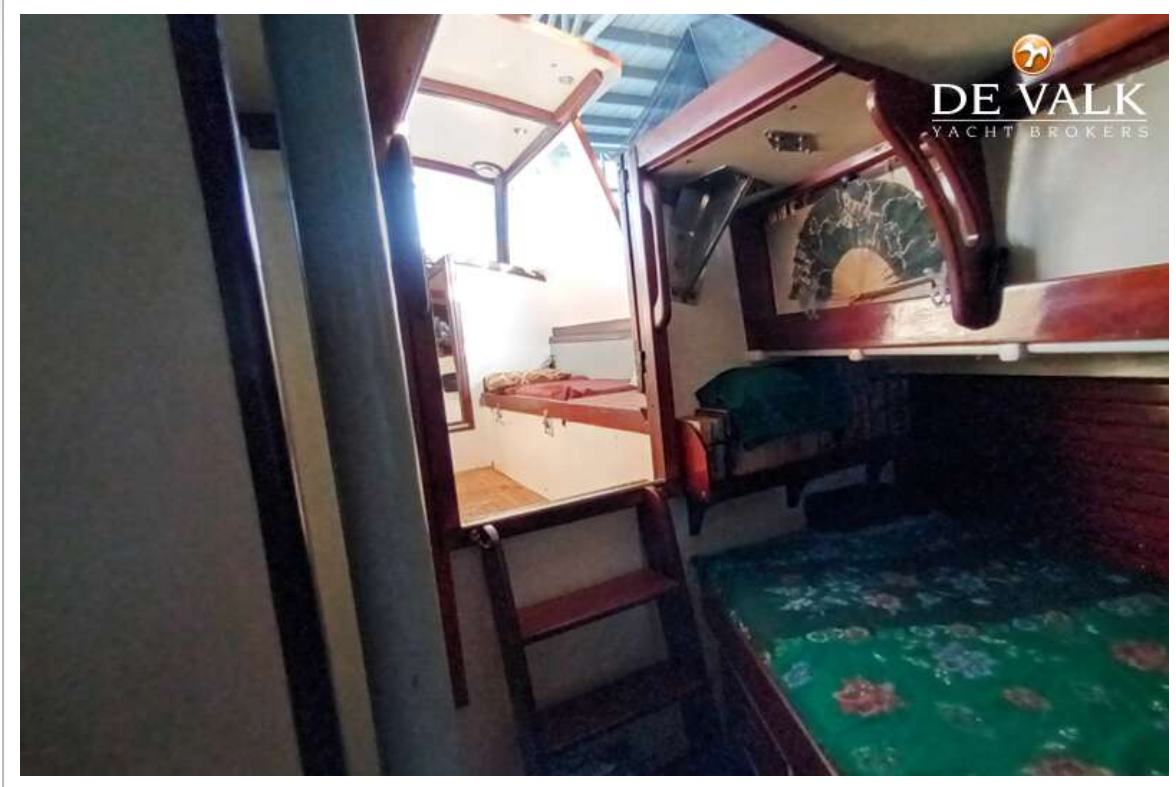
FRANS MAAS CALYPSO 42



FRANS MAAS CALYPSO 42







FRANS MAAS CALYPSO 42

