



DE VALK
YACHT BROKERS



FAIRLINE SQUADRON 55



DE VALK
YACHT BROKERS

FAIRLINE SQUADRON 55

BROKER'S COMMENTS

This Fairline Squadron 55 is the latest and rare MK3 version with the much improved flybridge layout and proper flybridge stairs. She sleeps 6 in 3 comfortable cabins plus an aft crew cabin and has a spacious saloon with separate dinette. Fitted with the Volvo Penta D12 700hp diesel engines she delivers exciting performance as well. The 55 is a quintessential Fairline Squadron and as popular pre-owned as they were when new and this is a very well kept example with a full service history and lots of upgrades, Don't miss this opportunity to make her your own!

Nick Lanting

SPECIFICATIONS

| | | | |
|---------------------|------------------------------------|----------------|------------------------------|
| Dimensions | 17.33 x 4.65 x 1.10 (m) | Builder | Fairline Boats |
| Built | 2002 | Cabins | 3 |
| Material | GRP | Berths | 6 |
| Engine(s) | 2 x Volvo Penta D12-700 EDC diesel | Hp/Kw | 2 x 700.00 (hp), 514.00 (kw) |
| Asking price | € 399.000 (VAT Paid) | Lying | The Netherlands |

CONTACT

| | | | |
|---------------------|--|------------------|----------------------|
| Sales office | De Valk Thuishaven | Telephone | +31 35 5829042 |
| Address | Marinaweg 8 (postal address) 1361 AC Almere NL | E-mail | thuishaven@devalk.nl |

DISCLAIMER

These particulars are given in good faith as supplied but cannot be guaranteed.



GENERAL

| | |
|-----------------------------------|------------------------------------|
| Model | FAIRLINE SQUADRON 55 |
| Type | motor yacht |
| LOA (m) | 17,33 |
| LWL (m) | 16,13 |
| Beam (m) | 4,65 |
| Draft (m) | 1,10 |
| Air draft (m) | 5,34 |
| Headroom (m) | 1,93 |
| Year built | 2002 |
| Launched | 2003 |
| Builder | Fairline Boats |
| Country | United Kingdom |
| Designer | Bernard Olesinski / Fairline |
| Displacement (t) | 20,3 |
| CE norm | B |
| Hull material | GRP |
| Hull colour | white |
| Hull shape | yes |
| Superstructure material | GRP |
| Rubbing strake | stainless steel With rubber insert |
| Deck material | GRP |
| Deck finish | teak |
| Superstructure deck finish | non-skid moulded in |
| Cockpit deck finish | teak |
| Antifouling (year) | 2026 |
| Window frame | stainless steel |
| Window material | tempered glass |
| Deckhatch | 1 x |
| Portholes | stainless steel |
| Flybridge | yes |



FAIRLINE SQUADRON 55

| | |
|-------------------------------------|---|
| Flybridge cover | 2020 |
| Flybridge cockpit cover | yes |
| Radar arch | yes |
| Fuel tank (litre) | stainless steel 1091 |
| Fuel tank 2 (litre) | stainless steel 1091 |
| Level indicator (fuel tank) | New 2024 |
| Freshwater tank (litre) | GRP 572 |
| Level indicator (freshwater) | yes |
| Blackwater tank (litre) | GRP 182 |
| Level indicator (blackwater) | yes |
| Blackwater tank extraction | deck extraction + pump |
| Wheel steering | hydraulic With power steering, new hydraulic ram 2021 |
| Inside helm position | yes |
| Flybridge helm position | yes |
| Emergency tiller | yes |
| More info on hull | Yearly polish and wax treatment |
| Extra info | Crew cabin area aft is used for storage |

ACCOMMODATION

| | |
|----------------------------|--|
| Cabins | 3 |
| Berths | 6 |
| Crew cabin | yes |
| Crew berths | 2 |
| Interior | cherry High gloss American Cherry with Eucalyptus features |
| Floor | carpet |
| Open cockpit | yes |
| Saloon | Leather upholstery 2021, wall paneling 2022 |
| Headroom saloon (m) | 1,93 |
| Heating | 2 x Eberspächer D5 (2020) with EasyStart, last serviced 2023 |
| Air-conditioning | reverse cycle airco Marine Air |
| Chart table | yes |



FAIRLINE SQUADRON 55

| | |
|-------------------------|--|
| Dinette | yes |
| Sliding door to cockpit | panoramic |
| Galley | yes |
| Countertop | plastic Golden Travertine Avonite |
| Sink | stainless steel 2 x |
| Cooker | electric NEFF induction 4-burner (2021) |
| Extractor | yes |
| Microwave/oven combi | Sharp |
| Fridge | Engel in galley (2020), Liebherr in utility room, Waeco on fly |
| Hot water system | 220V + engine XYLEM calorifier 67 liter (2021) |
| Water pressure system | electrical Jabsco pump new 2021 |
| Dishwasher | Bomann (2021) |
| Ice maker | Vitrirfigo, in saloon |
| Crockery | Squadron crockery and cutlery for 8 persons |
| Owners cabin | French bed Forward, Flexima mattress |
| Bed length (m) | 2,00 x 1,60 |
| Wardrobe | hanging/drawers/shelves |
| Bathroom | en suite |
| Toilet | In bathroom |
| Toilet system | vacuum New pump 2023 |
| Wash basin | in the bathroom |
| Shower | separate In bathroom |
| Extra info | Headroom 1.96 m |
| Guest cabin 1 | twin single Port, Flexima mattresses |
| Bed length (m) | 1,90 x 0,70 (2 x) |
| Wardrobe | hanging/drawers/shelves |
| Bathroom | en suite |
| Toilet | In bathroom |
| Toilet system | vacuum |
| Wash basin | in the bathroom |
| Shower | separate In bathroom |
| Extra info | Headroom 2,01 m |



| | |
|------------------------------------|--|
| Guest cabin 2 | twin single Starboard, Flexima mattresses |
| Bed length (m) | 1,90 x 0,70 m (2 x) |
| Wardrobe | hanging/drawers/shelves |
| Extra info | Headroom 2,03 m |
| Wardrobe | yes |
| Crew cabin(s) | yes |
| Washing machine/dryer combi | LG (2021), in utility room |
| Ironing facilities | Foldout ironing board in utility room |
| Flybridge | Hi-lo table not working |
| Wet bar | On flybridge, with sink, fridge, DeDietrich griddle and wastebin |
| Extra info | Fairline Phantom 50 style helm seats |
| Extra info | Safe in master cabin |

MACHINERY

| | |
|------------------------------|---------------------------|
| No of engines | 2 |
| Make | Volvo Penta |
| Type | D12-700 EDC |
| HP | 700 |
| kW | 514 |
| Fuel | diesel |
| Year installed | 2002 |
| Maximum speed (kn) | 32,00 |
| Cruising speed (kn) | 25 |
| Engine hours | 2200 |
| Engine cooling system | freshwater heat exchanger |
| Drive | shaft |
| Engine controls | electrical |
| Gearbox | hydraulic ZF 325-1A |
| Bowthruster | electric Side-Power |
| Exhaust | watercooled |
| Propeller type | fixed |



| | |
|---------------------------------|--|
| Propeller blades | 4 |
| Propeller shaft material | stainless steel |
| Shaft lubrication | water |
| Manual bilge pump | 1 x |
| Electric bilge pump | 3 x |
| Bilge alarm | yes |
| Electrical installation | 12V / 24V / 230V |
| Generator | silent separator Onan MDKAZ-5006843 with Silent Separator - 11 kVA |
| Running hours generator | +/- 2200 |
| Batteries | yes |
| Start battery | 2 x 180 Ah (2024) |
| Service battery | 4 x AGM 180 Ah (2020) |
| Generator battery | yes |
| Battery charger | Mastervolt Mass 24/75 for starter batteries |
| Inverter | Alfatronics 24-12V (2021) |
| Battery charger/inverter | Victron Quattro 24/5000/120 (2020) for service batteries |
| Diode battery combiners | yes |
| Shorepower | with cable |
| Trimtabs | Bennett |

NAVIGATION

| | |
|-------------------------------|---|
| Compass | Plastimo |
| Compass on flybridge | Plastimo |
| Electric compass | In autopilot |
| Depth sounder/log | Raymarine p70 (2020) |
| Windset | Raymarine p70 (2020) |
| Repeater | Raymarine p70 Multi on flybridge |
| VHF | Shipmate RS8400, Raymarine Ray 63 (2020), also on flybridge |
| Autopilot | Raymarine p70Rs (2020), also on flybridge |
| Rudder angle indicator | VDO |



| | |
|----------------------------|--|
| Radar | Raymarine Quantum II Q24D (2020) |
| Plotter | Raymarine AXIOM 16 Pro-S Hybridtouch (2020) |
| Plotter/GPS | Raymarine AXIOM 9 RV Hybridtouch on flybridge (2020) |
| Radar/GPS/plotter | yes |
| Electronic chart(s) | 1 x |
| AIS transceiver | Raymarine AIS 700 Class B Tranceiver (2020) |
| Camera | Raymarine CAM220 Eyeball CCTV day/night (2020) |
| Navigation lights | yes |
| Searchlight | Guest, with remote control at both helms |
| Loudhailer | Raymarine 430 loudhailer |

EQUIPMENT

| | |
|-----------------------------------|--|
| Fixed windscreen | yes |
| Cockpit cover | 2021 |
| Bimini | On flybridge (2021) |
| Window cover | External blinds (2020) |
| Cockpit cushions | yes |
| Bathing platform | yes |
| Boarding ladder | stainless steel |
| Transom door | 2 x |
| Gangway | Besenzoni electric/hydraulic |
| Deck shower | Hot & cold |
| Anchor | Delta |
| Anchor chain | 80 m stainless steel |
| Windlass | electrical Lewmar |
| Capstan | 1 x on windlass and 2 x Lofrans in aft cockpit |
| Deck wash | yes |
| Sea railing | yes |
| Grab rail (superstructure) | stainless steel |
| Pulpit | yes |
| Wiper | 3 x |

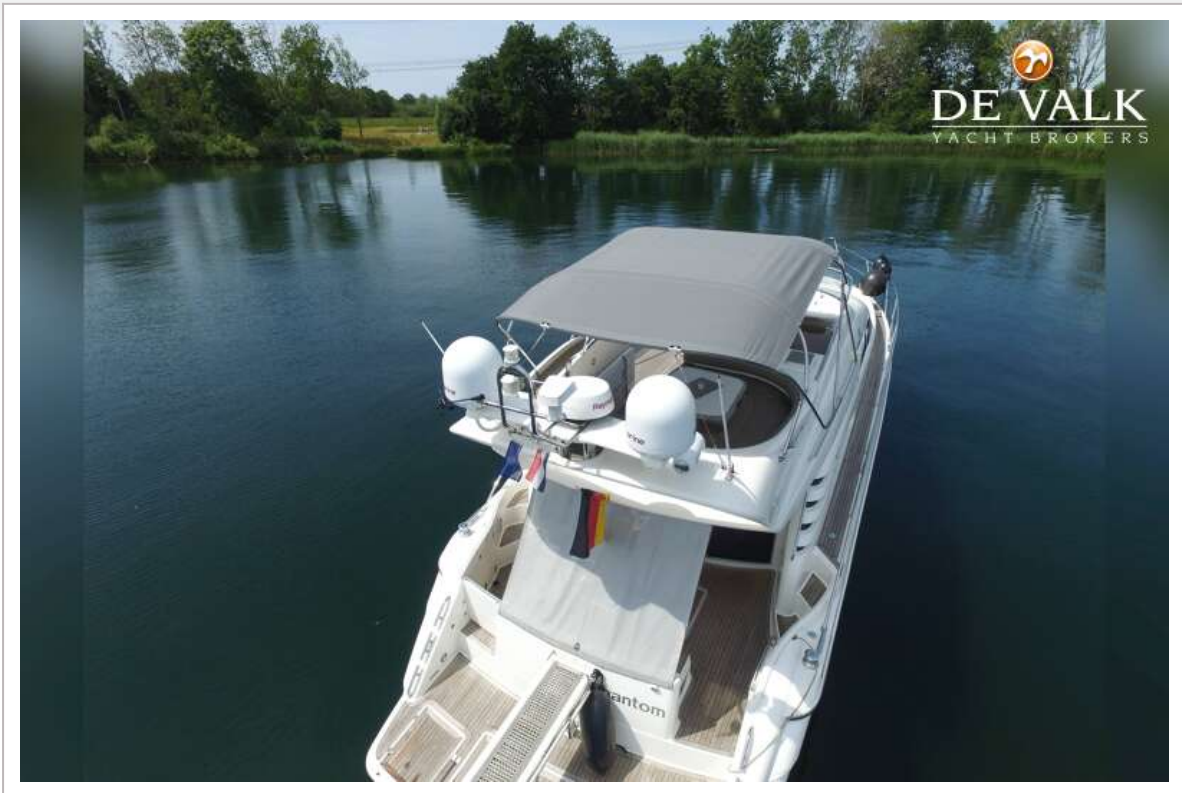


| | |
|------------------------------------|--|
| Window heating | Via air conditioning and separate blowers |
| Horn | electric |
| Radar reflector | yes |
| TV | LG 100cm in saloon (2020), JVC 60cm in master cabin (2020) |
| TV receiver | Satellite receivers |
| TracVision ball | STV 45cm + dummy dome (2020) |
| Radio | Fusion (2021) |
| Radio-cd player | In master cabin |
| Cockpit speakers | 2 x Fusion, 2x Fusion on fly |
| Speakers in salon | 2 x Fusion |
| Speakers in cabin | In forward cabin |
| Clock - barometer | yes |
| Fire extinguisher | yes |
| Extinguisher in engine room | yes |
| Auto extinguisher system | yes |
| Extra info | Light dimmers saloon, dinette, flybridge |
| Extra info | Large fixed table & 2 x leather stool in saloon, |
| Extra info | Exterior LED mood lights (2021) |





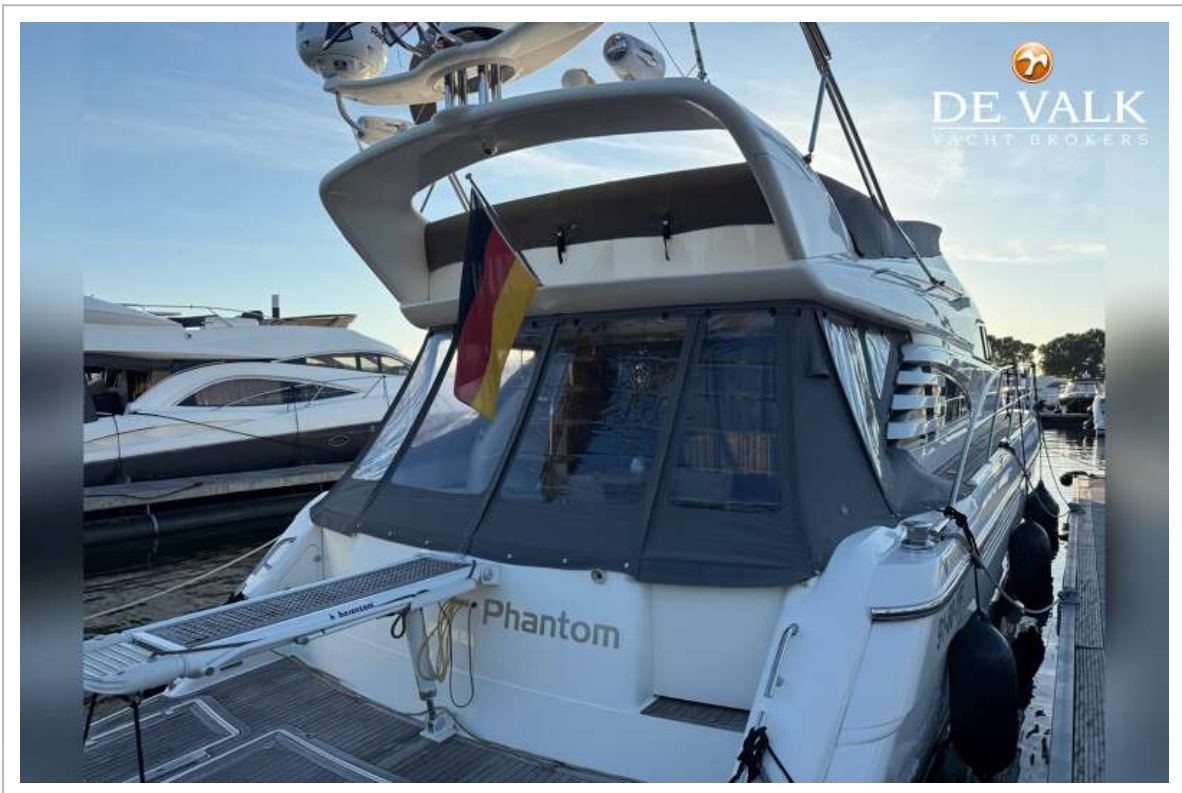
FAIRLINE SQUADRON 55



FAIRLINE SQUADRON 55



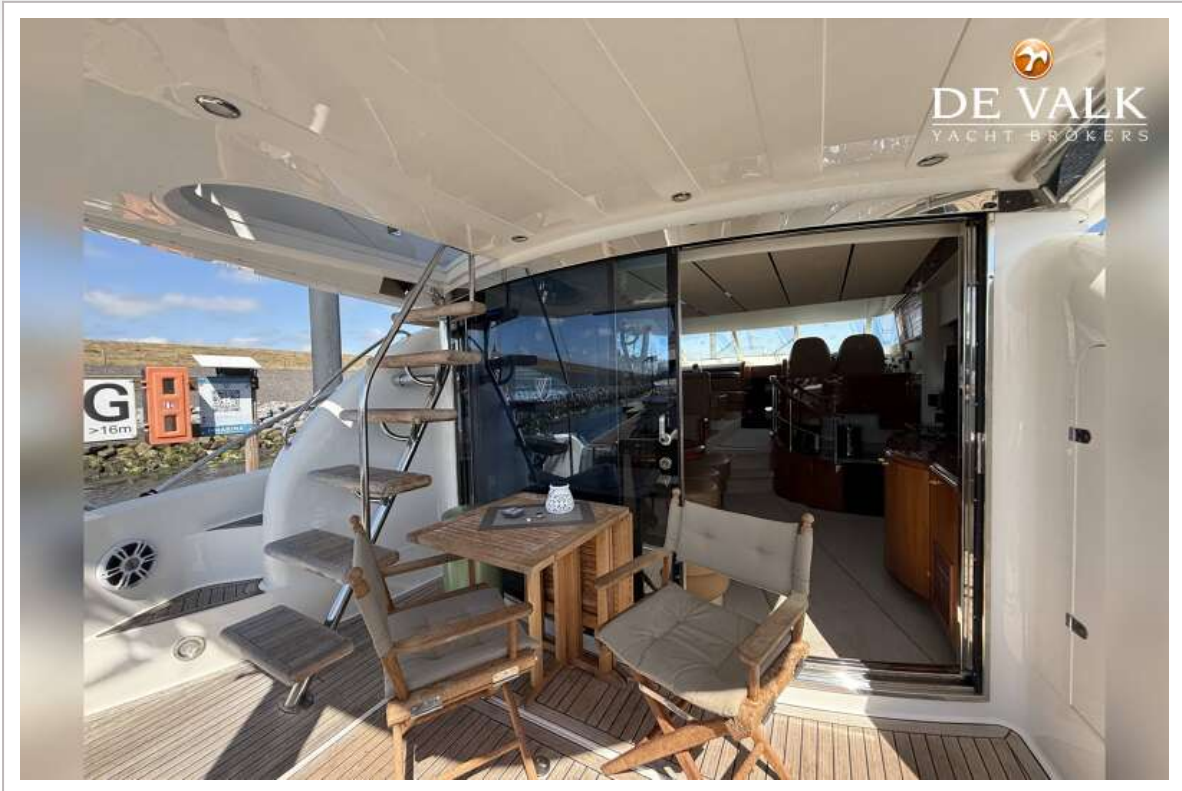




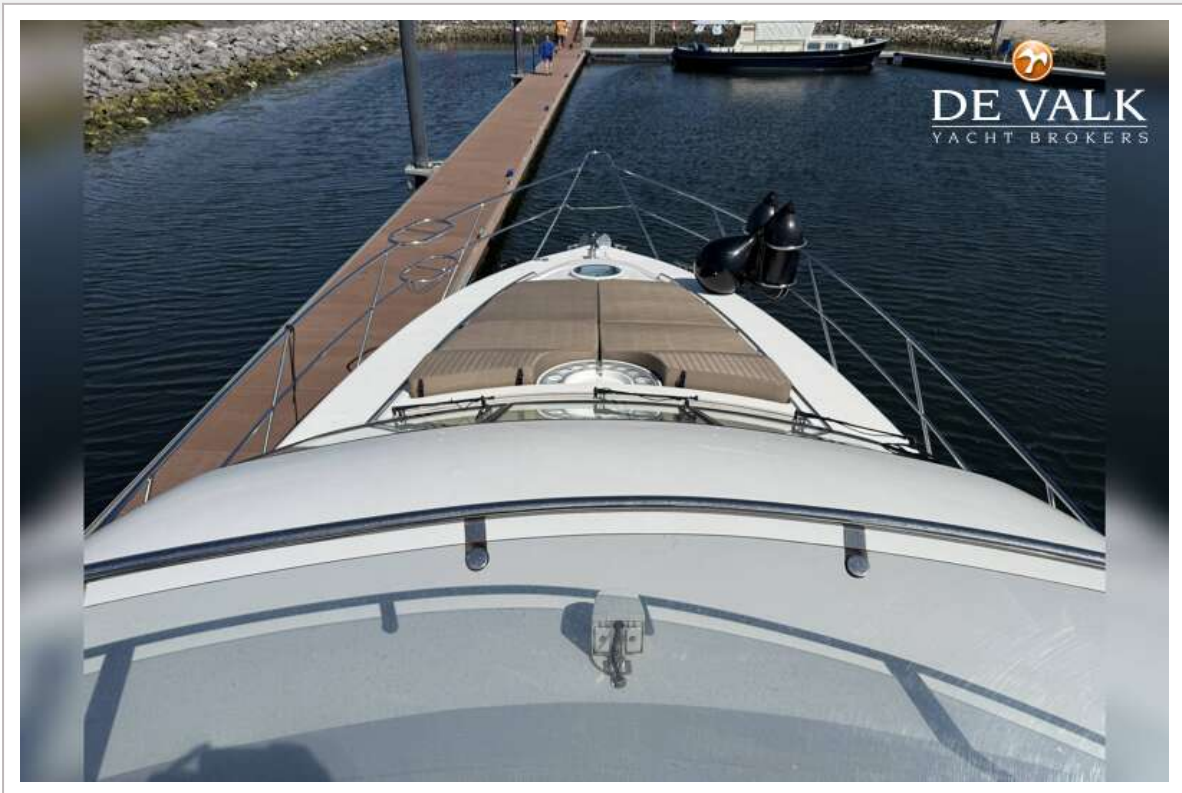
FAIRLINE SQUADRON 55



FAIRLINE SQUADRON 55



FAIRLINE SQUADRON 55



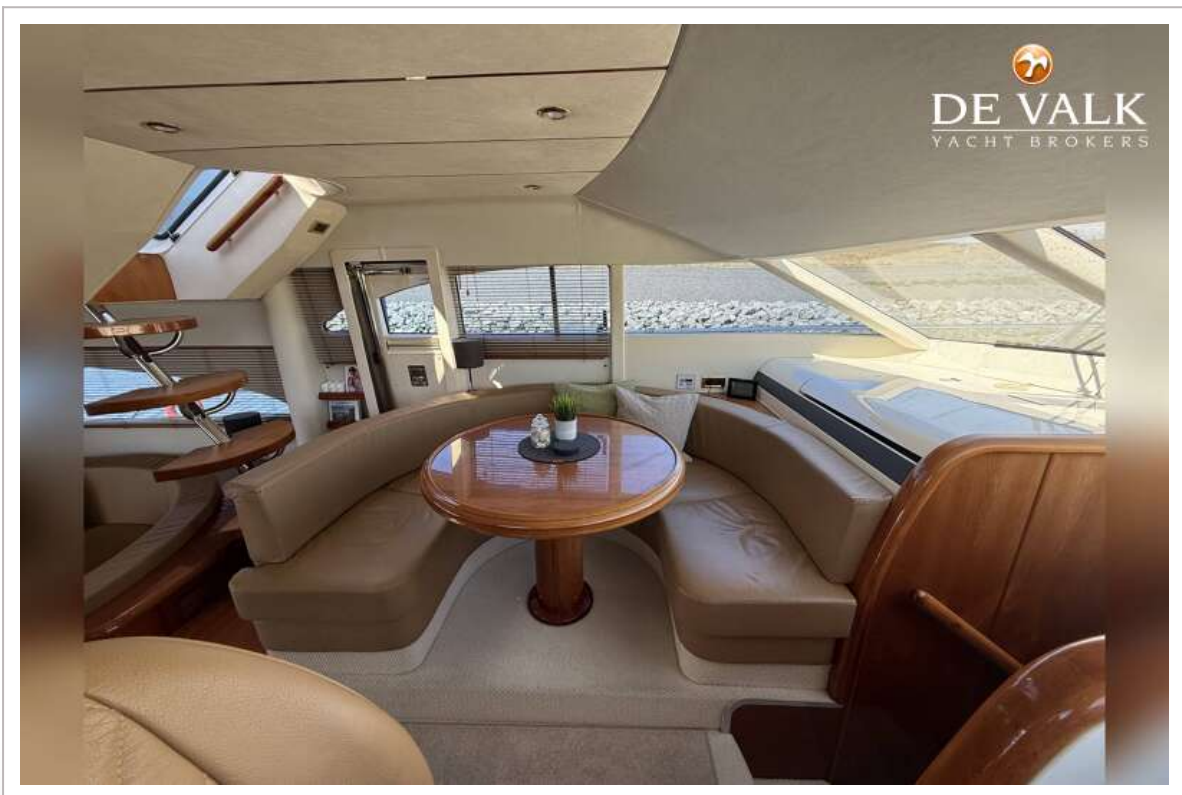
FAIRLINE SQUADRON 55



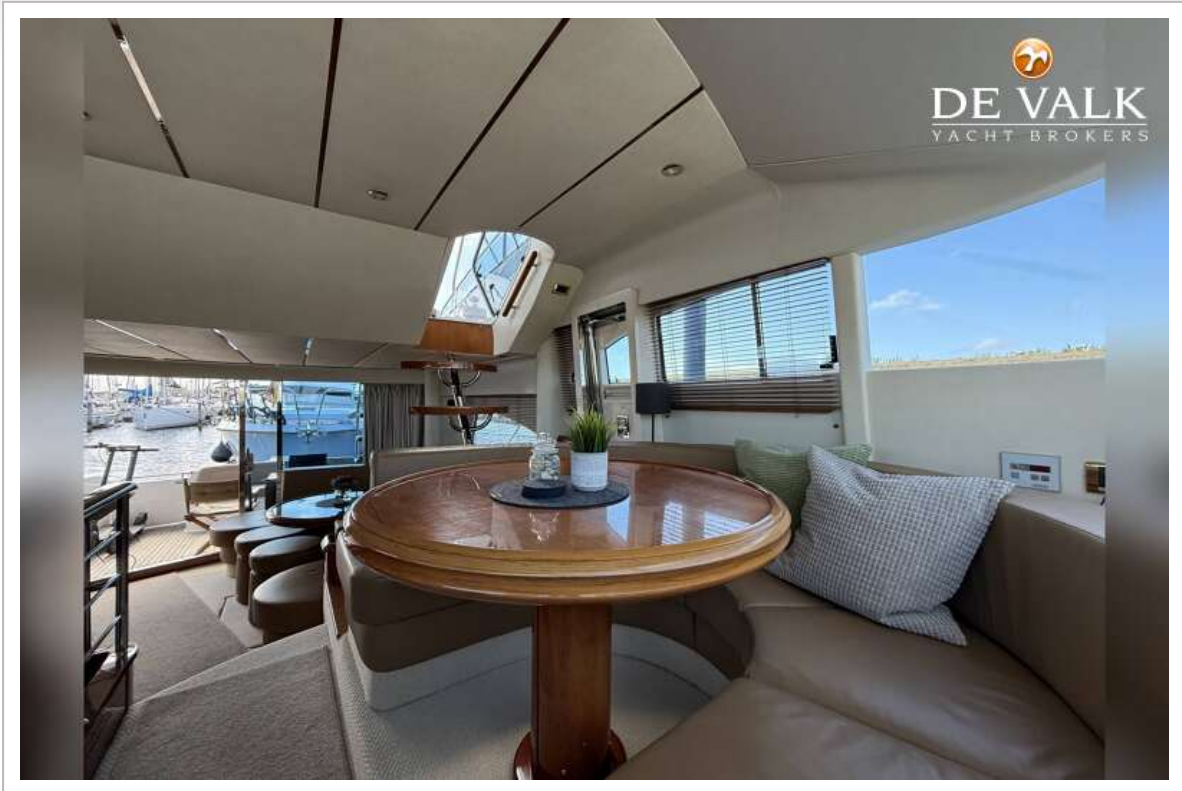
FAIRLINE SQUADRON 55



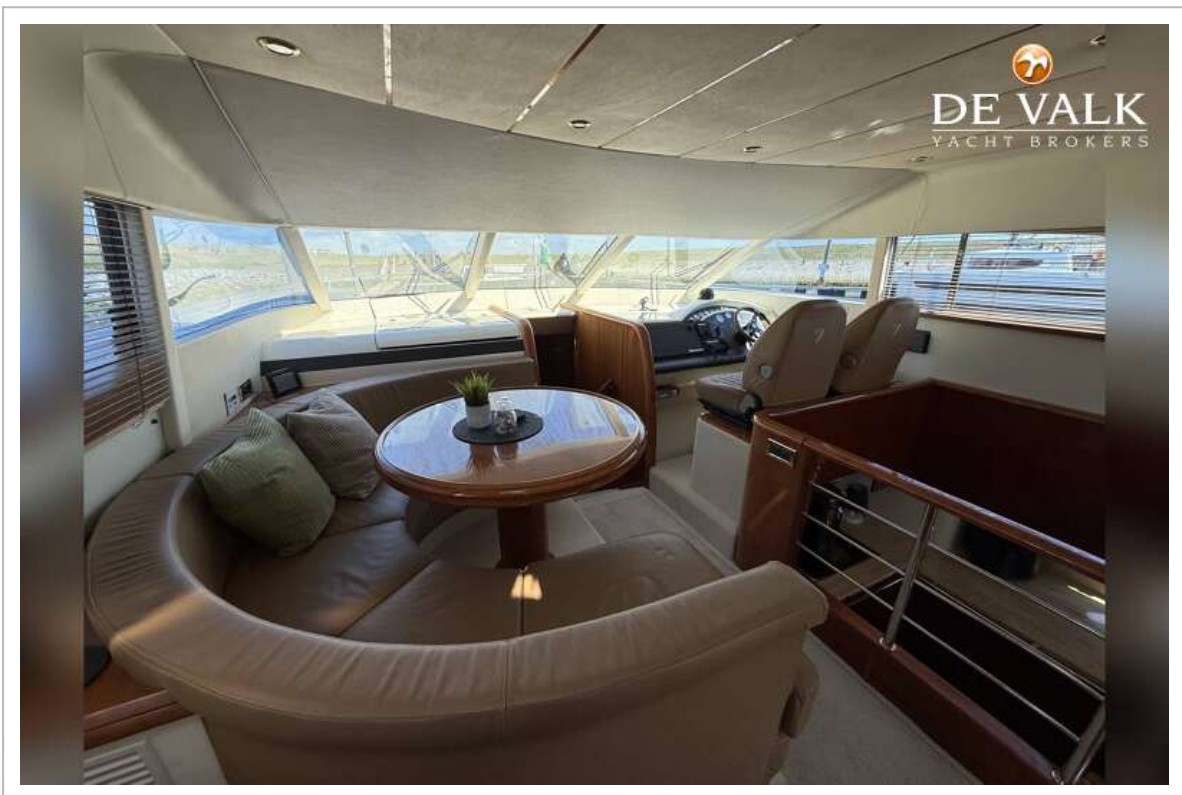
FAIRLINE SQUADRON 55



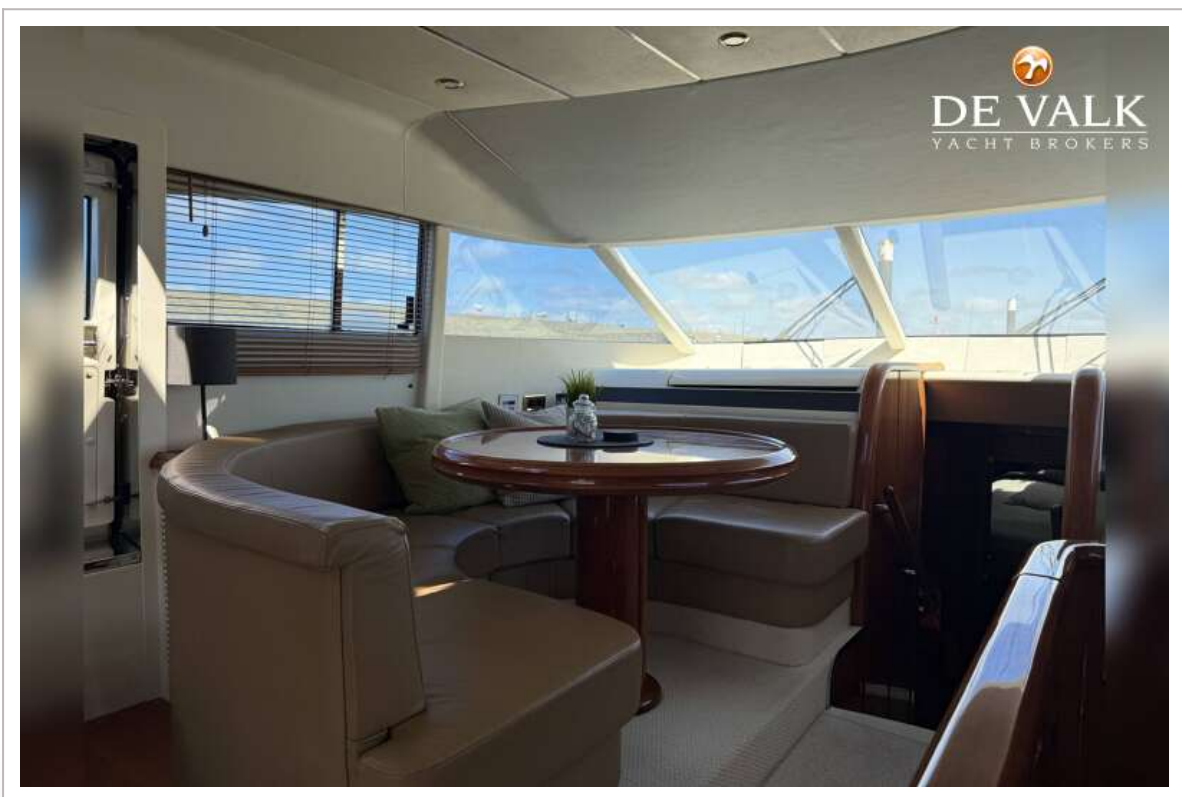
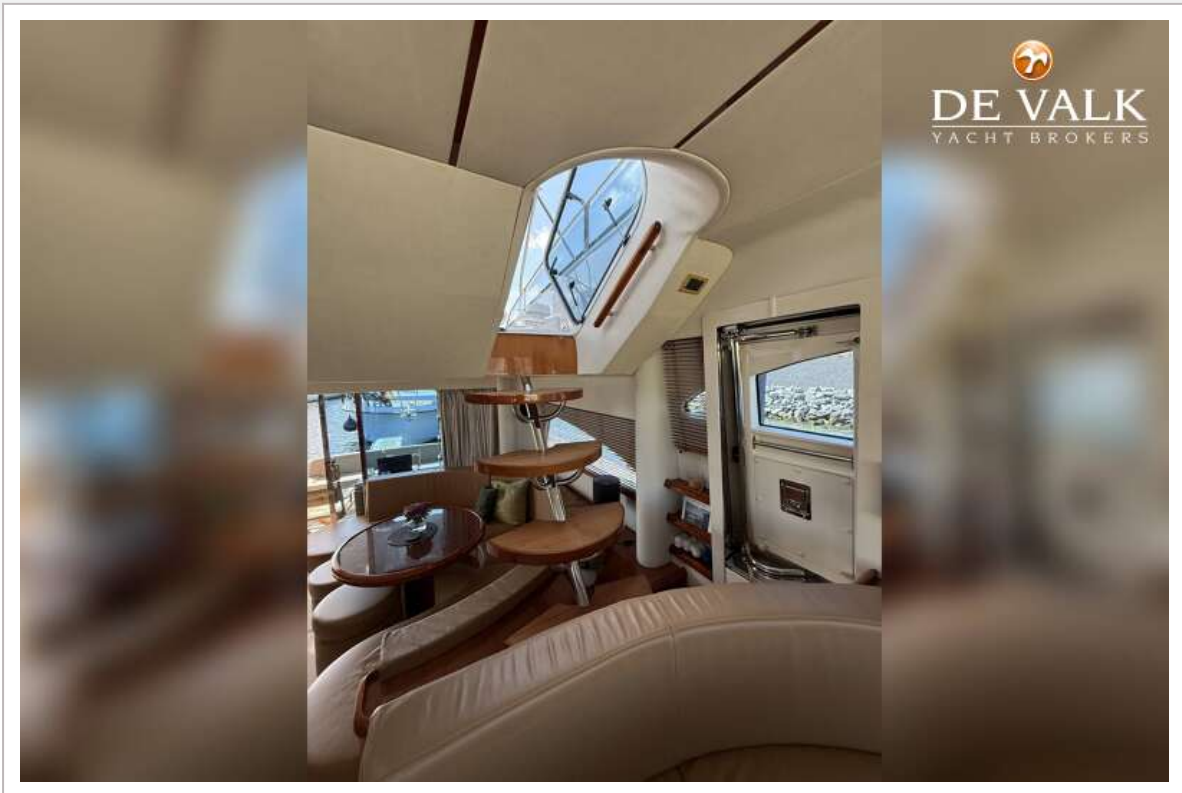
FAIRLINE SQUADRON 55



FAIRLINE SQUADRON 55



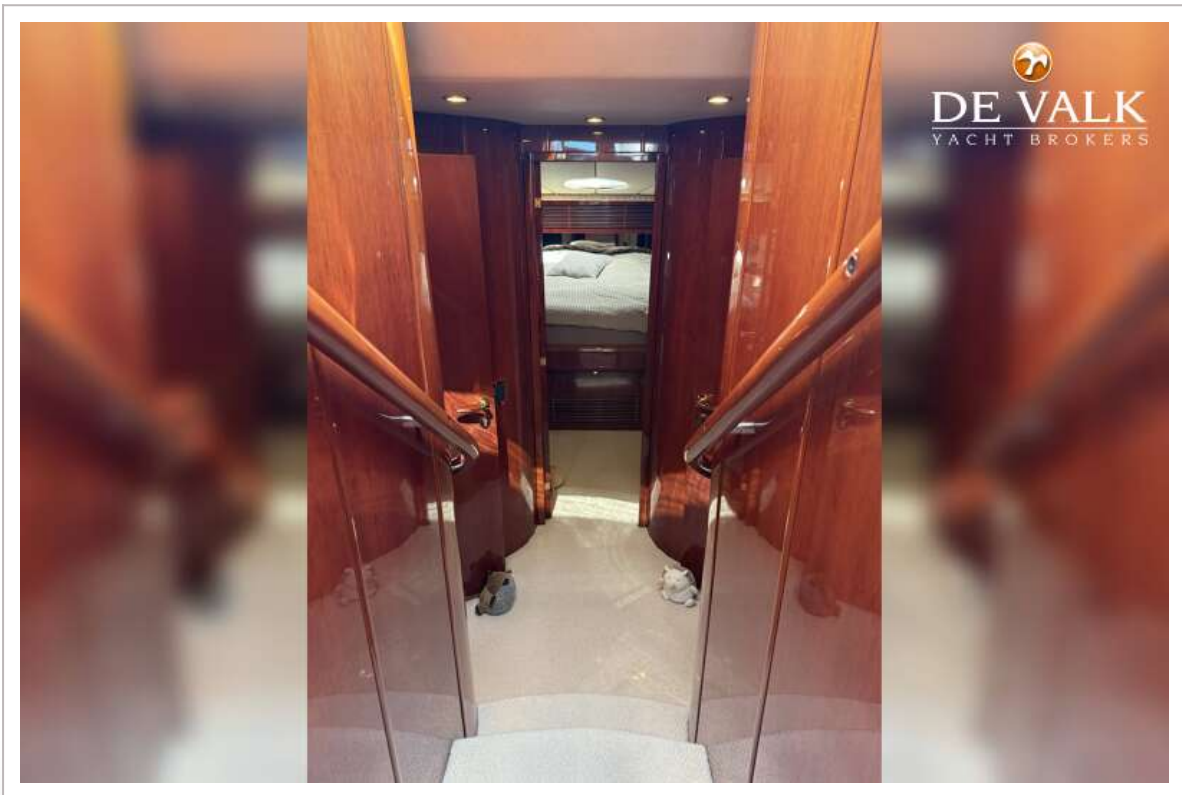
FAIRLINE SQUADRON 55



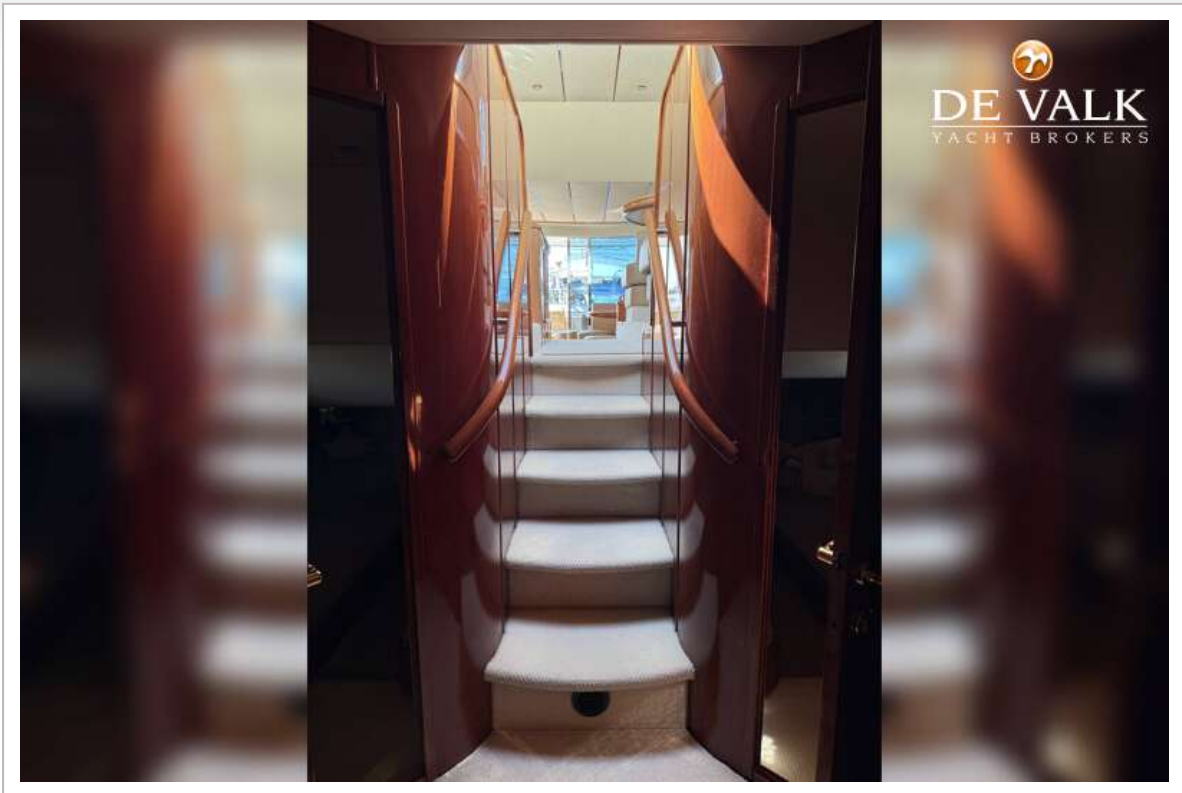
FAIRLINE SQUADRON 55

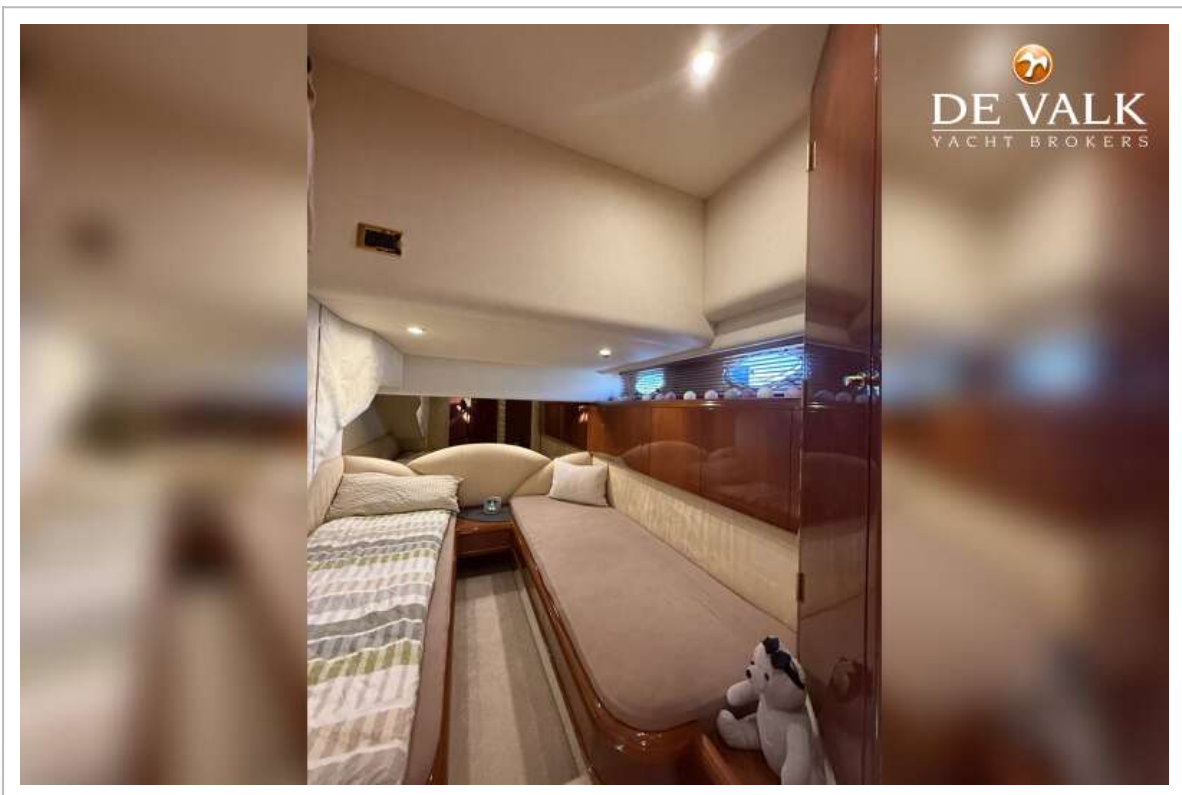
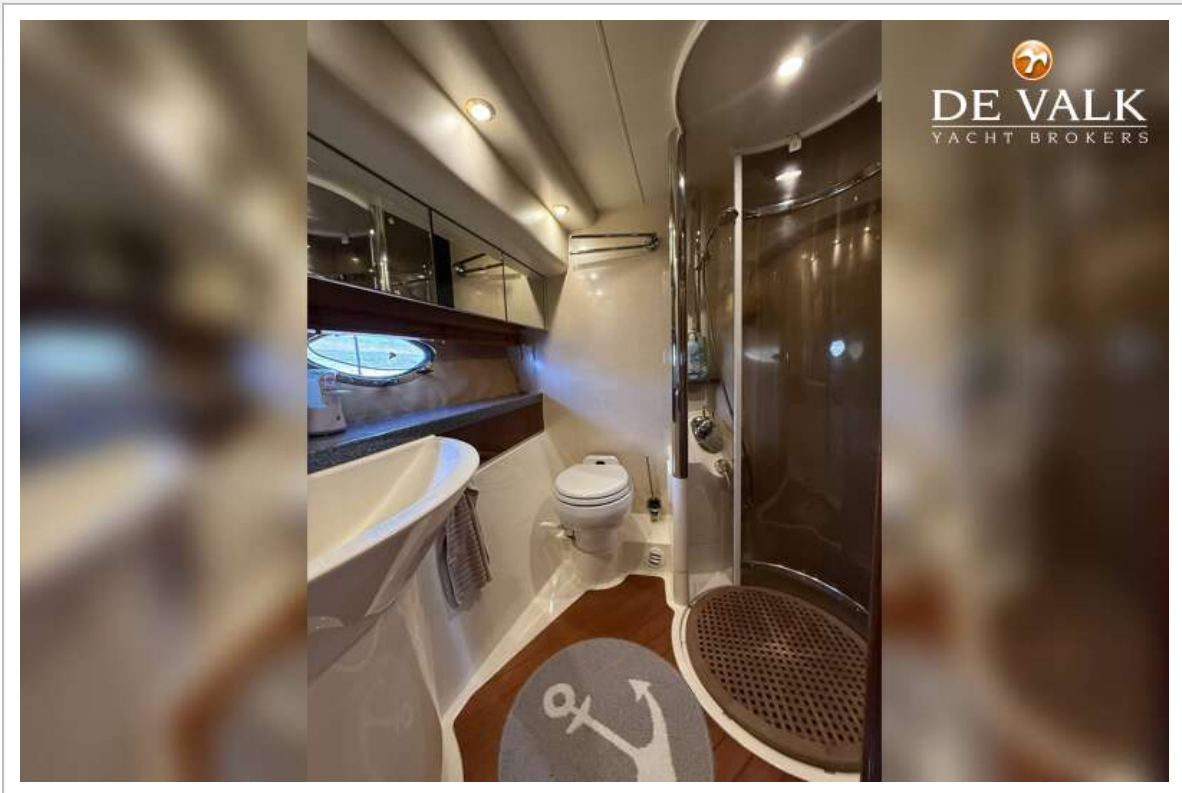


FAIRLINE SQUADRON 55



FAIRLINE SQUADRON 55



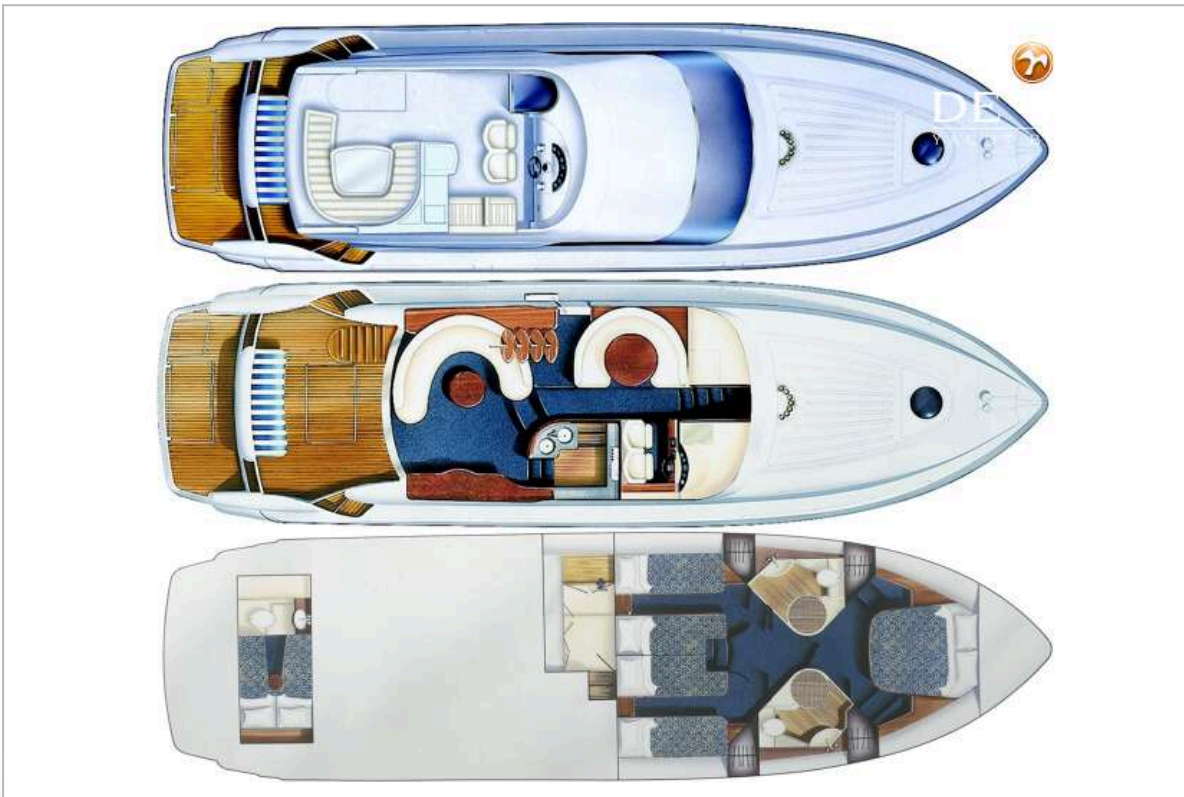


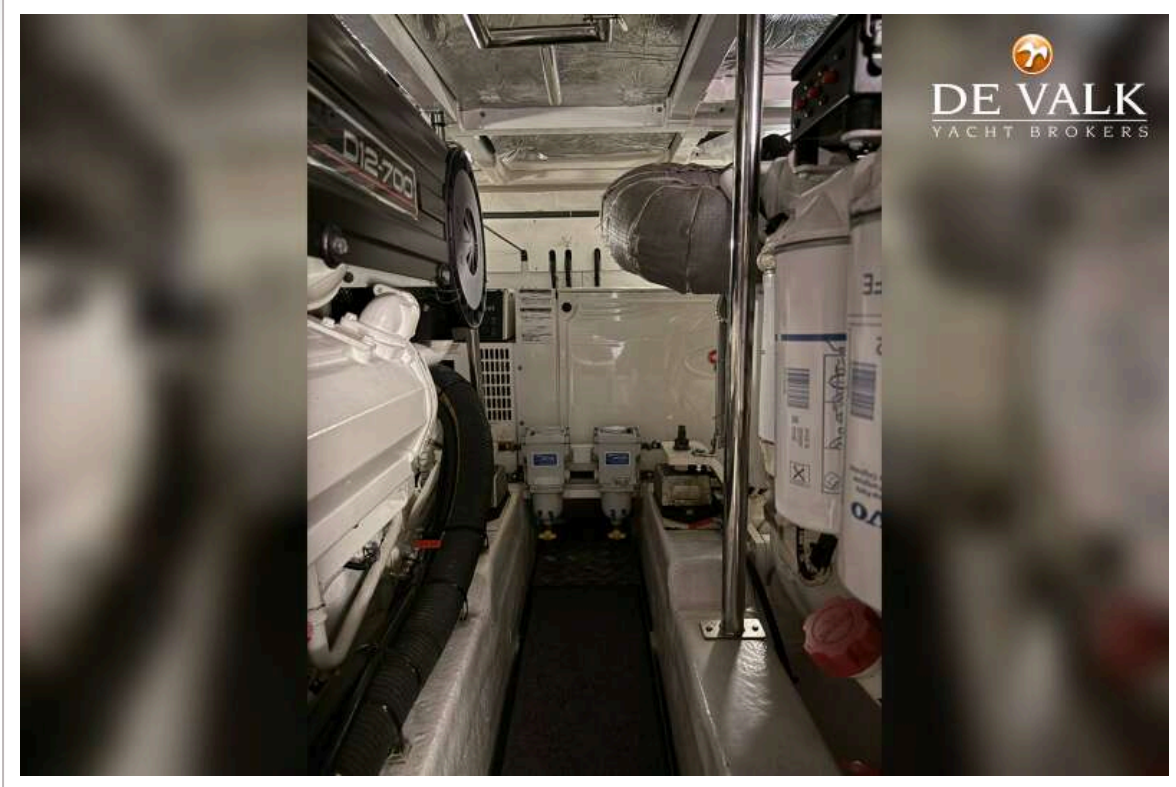
FAIRLINE SQUADRON 55





FAIRLINE SQUADRON 55






DE VALK
YACHT BROKERS

