



DE VALK
YACHT BROKERS



GULET 26.5



DE VALK
YACHT BROKERS

GULET 26.5

BROKER'S COMMENTS

Gulet 33m that is subjected to regular maintenance work. She accommodates a total of 25 guests in climate-controlled cabins. Each cabin is equipped with private toilet and shower. On the aft deck there is a seating area, a dining table and a private dining area. Inside the yacht, there is a separate dining table and a fully equipped kitchen.

Sofia Iliia-Salvanou

SPECIFICATIONS

Dimensions	26.50 x 7.60 x 2.40 (m)	Builder	Aganlar shipyard
Built	1996	Cabins	11
Material	Wood	Berths	24
Engine(s)	1 x VOLVO PENTA TAMD 162C diesel	Hp/Kw	470.00 (hp), 345.92 (kw)
Asking price	€ 250.000 (VAT Not paid)	Lying	elsewhere / Not at sales office

CONTACT

Sales office	De Valk Corfu	Telephone	(+30) 266 111 8095
Address	New Port of Corfu, near Gouvia Marina 490 83 Corfu Greece	E-mail	corfu@devalk.nl

DISCLAIMER

These particulars are given in good faith as supplied but cannot be guaranteed.



GULET 26.5

GENERAL

Model	GULET 26.5
Type	motorsailer
LOA (m)	26,50
LWL (m)	23,13
Beam (m)	7,60
Draft (m)	2,40
Year built	1996
Builder	Aganlar shipyard
Country	Turkey
Gross tonnage	149,83
Net tonnage	92,46
Hull material	wood
Hull colour	white
Superstructure material	wood
Deck material	wood
Deck finish	teak
Deckhatch	yes
Portholes	yes
Fuel tank (litre)	2000
Freshwater tank (litre)	yes
Wheel steering	yes
Extra info	12 cabins and 12 toilets

ACCOMMODATION

Cabins	11
Berths	24
Crew cabin	1
Crew berths	4
Interior	Wood
Floor	teak



GULET 26.5

Saloon	yes
Air-conditioning	yes
Dining room	yes
Galley	yes
Countertop	yes
Sink	yes
Cooker	yes
Oven	yes
Microwave	yes
Fridge	yes
Freezer	yes
Hot water system	yes
Water pressure system	yes
Dishwasher	yes
Ice maker	yes
Coffee maker	yes
Crockery	yes
Owners cabin	double bed
Wardrobe	yes
Bathroom	yes
Toilet	yes
Wash basin	yes
Shower	yes
Guest cabin 1	double bed
Wardrobe	yes
Bathroom	yes
Toilet	yes
Wash basin	yes
Shower	yes
Guest cabin 2	double bed + single bed
Wardrobe	yes
Bathroom	yes



GULET 26.5

Toilet	yes
Wash basin	yes
Shower	yes
Guest cabin 3	double bed + single bed
Wardrobe	yes
Bathroom	yes
Toilet	yes
Wash basin	yes
Shower	yes
Guest cabin 4	double bed
Wardrobe	yes
Bathroom	yes
Toilet	yes
Wash basin	yes
Shower	yes
Washing machine	yes

MACHINERY

No of engines	1
Make	VOLVO PENTA
Type	TAMD 162C
HP	470
kW	345.92
Fuel	diesel
Cruising speed (kn)	6
Bowthruster	yes
Propeller type	fixed
Electrical installation	yes
Generator	yes
Batteries	yes
Start battery	yes



Service battery	yes
Battery charger	yes
Solar panel	yes
Shorepower	yes

NAVIGATION

Compass	yes
Depth sounder	yes
Log	yes
Windset	yes
VHF	yes
Autopilot	yes
Rudder angle indicator	yes
GPS	yes
Plotter	yes
Wifi antenna	yes
EPIRB	yes
Navigation lights	yes

EQUIPMENT

Bimini	yes
Cockpit cushions	yes
Cockpit table	yes
Cockpit chairs	yes
Bathing platform	yes
Boarding ladder	yes
Gangway	yes
Anchor	yes
Anchor chain	yes
Windlass	electrical
Dinghy	yes



GULET 26.5

Outboard	yes
Sea railing	yes
Life raft	yes
Lifejackets	yes
Lifebuoy	yes
Fenders	yes
Mooring lines	yes
TV	yes
Fire extinguisher	yes
Extra info	BBQ
Extra info	USB Connection

RIGGING

Rigging	ketch
Standing rigging	yes
Spreaders	yes
Mainsail	yes
Mizzen	yes
Multifunctional winches	yes



GULET 26.5



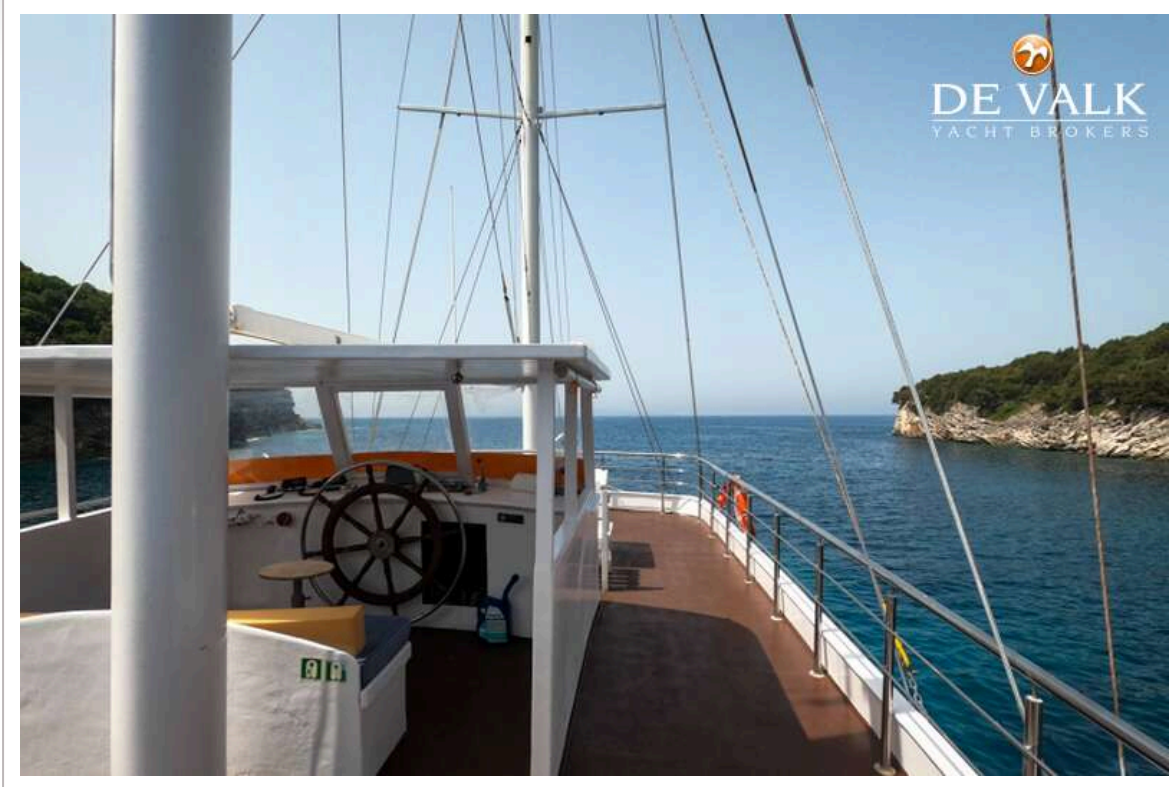
GULET 26.5



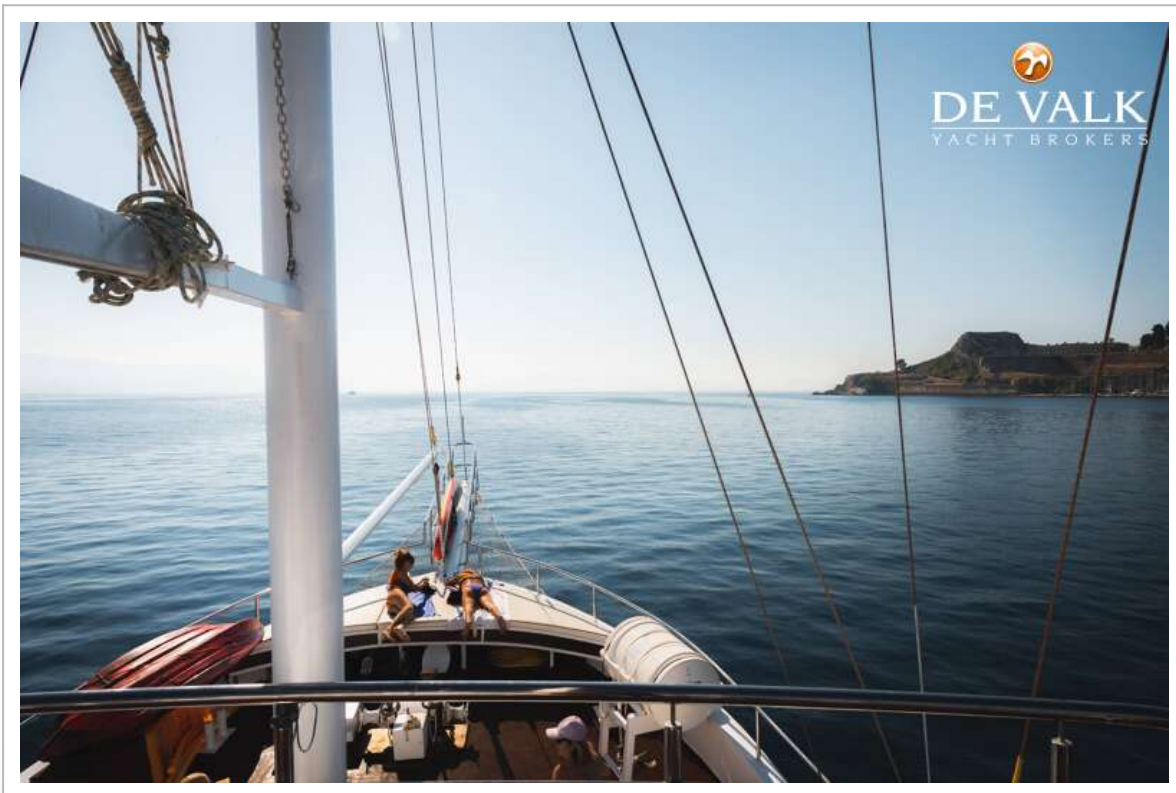
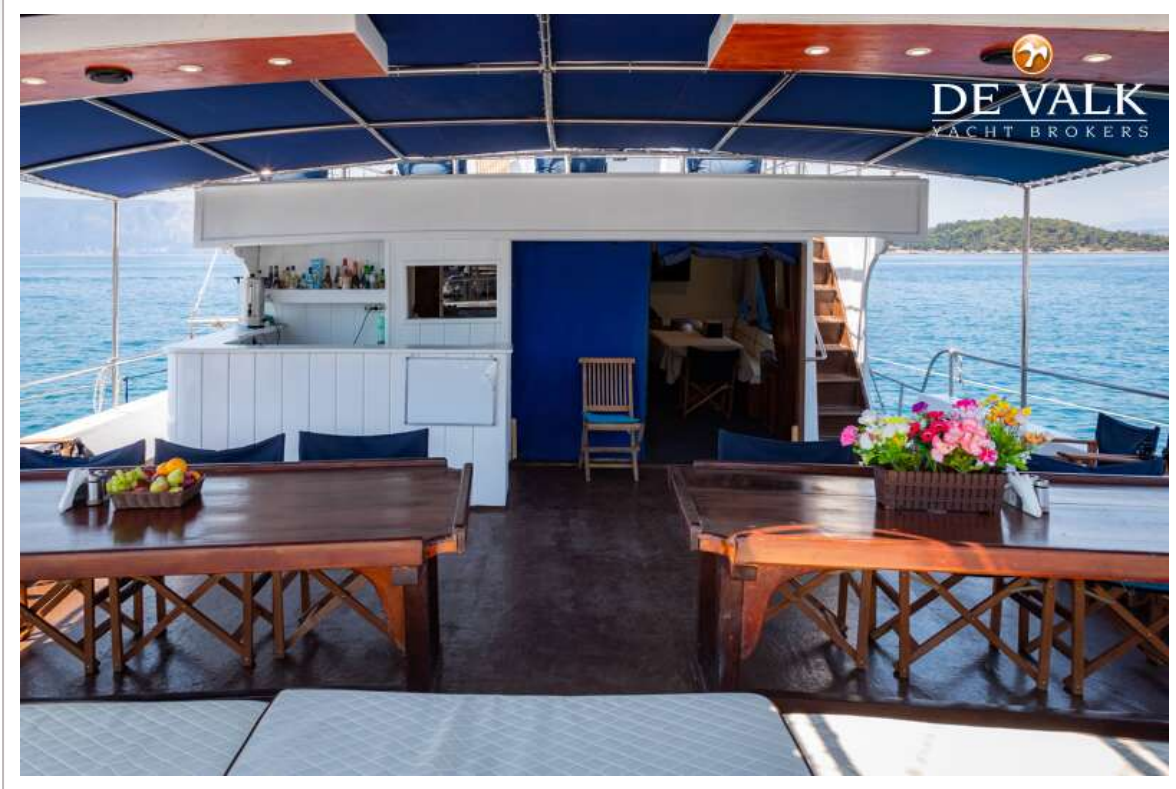
GULET 26.5

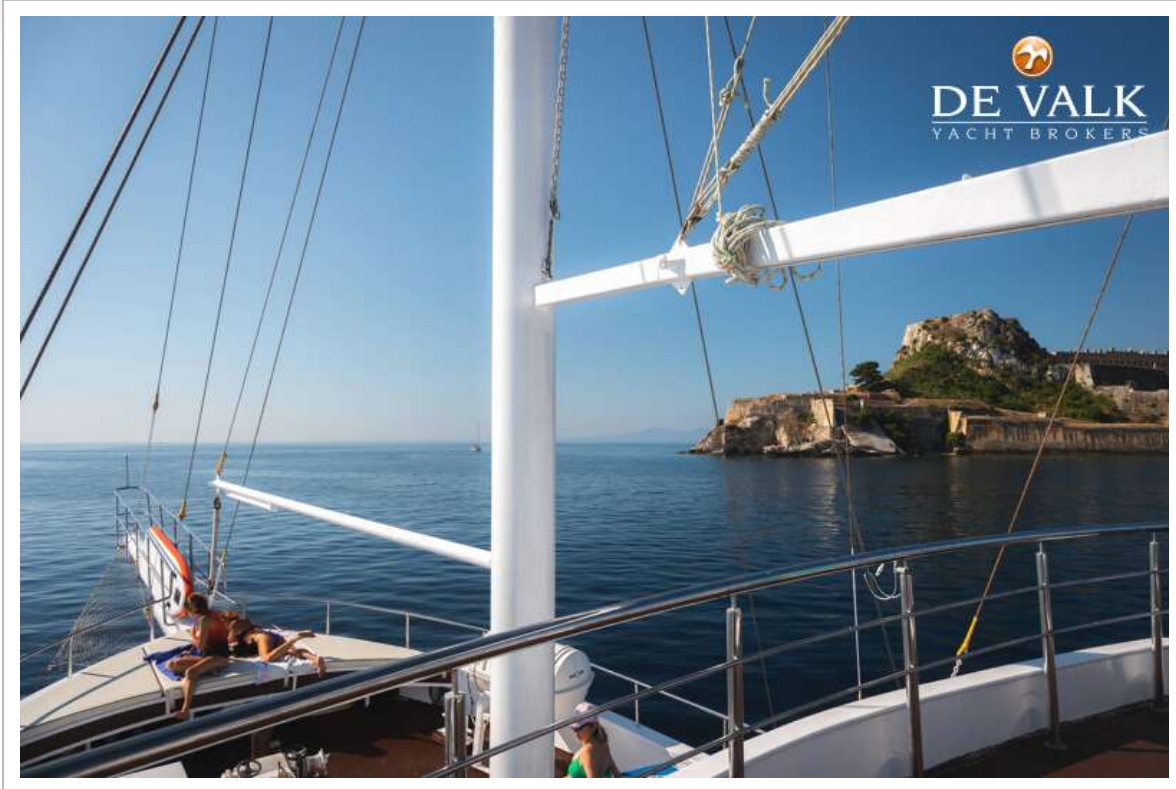


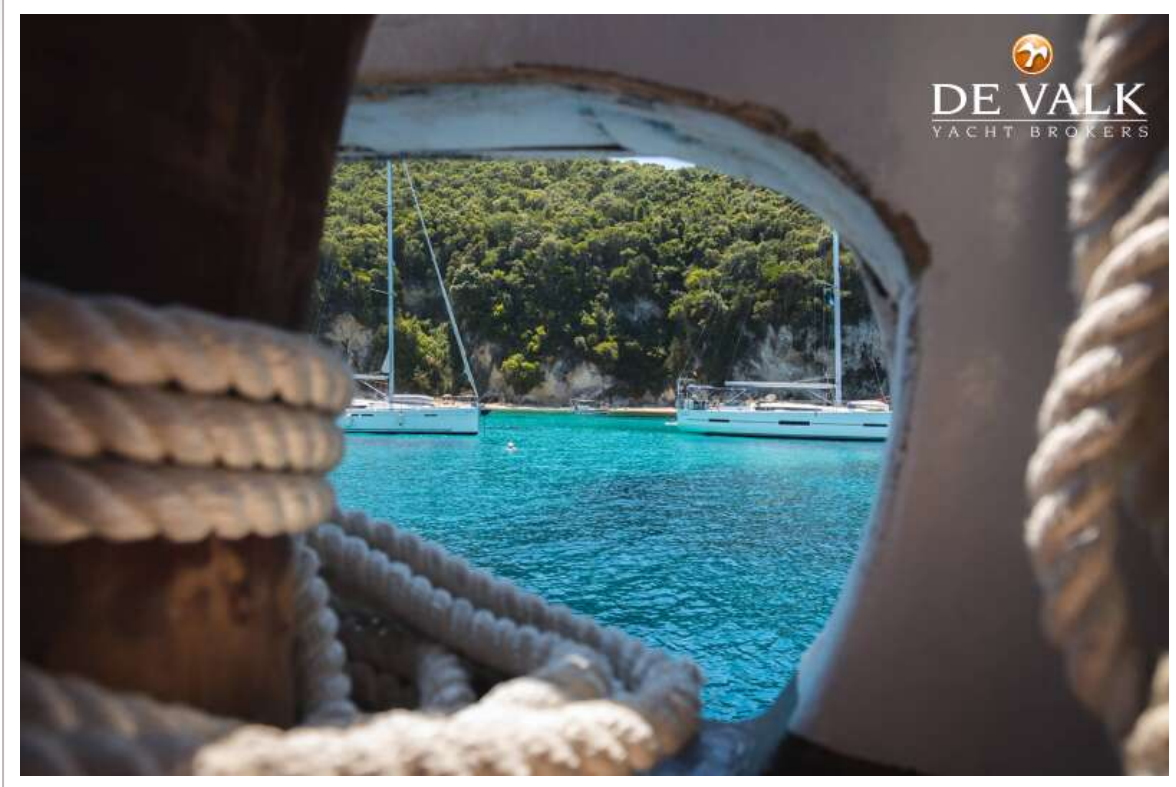
GULET 26.5



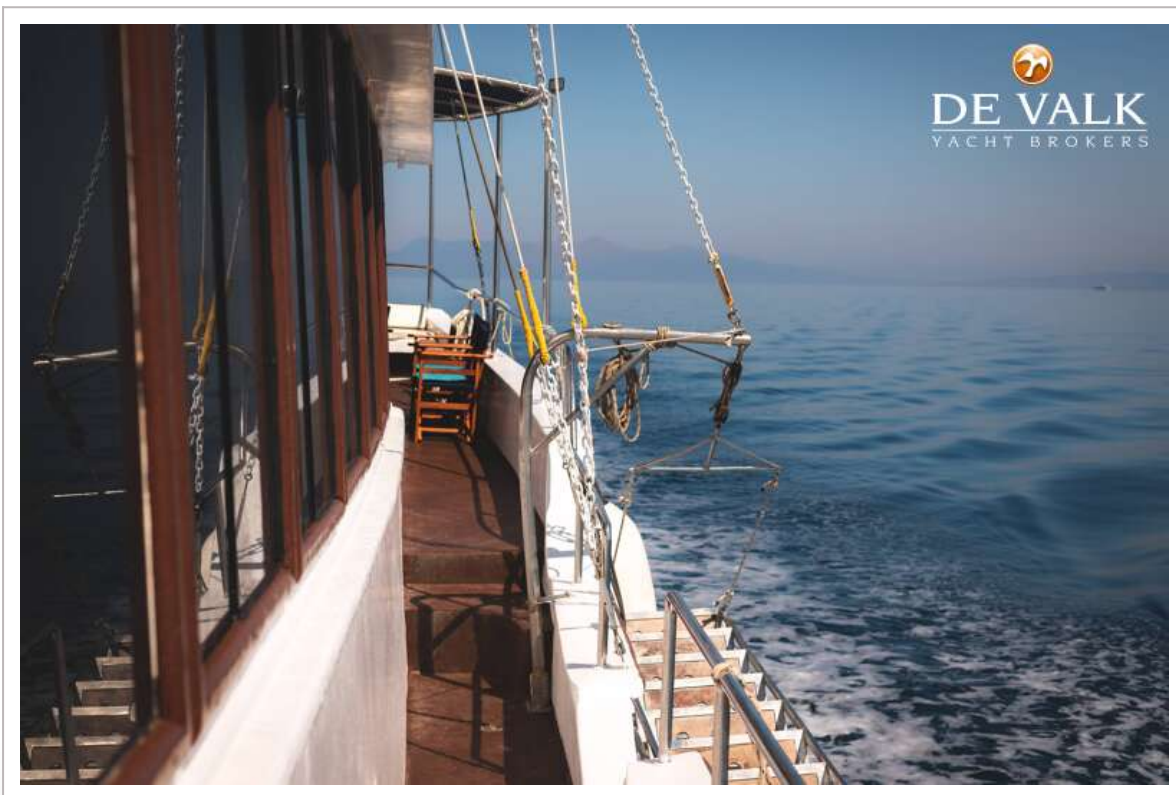
GULET 26.5



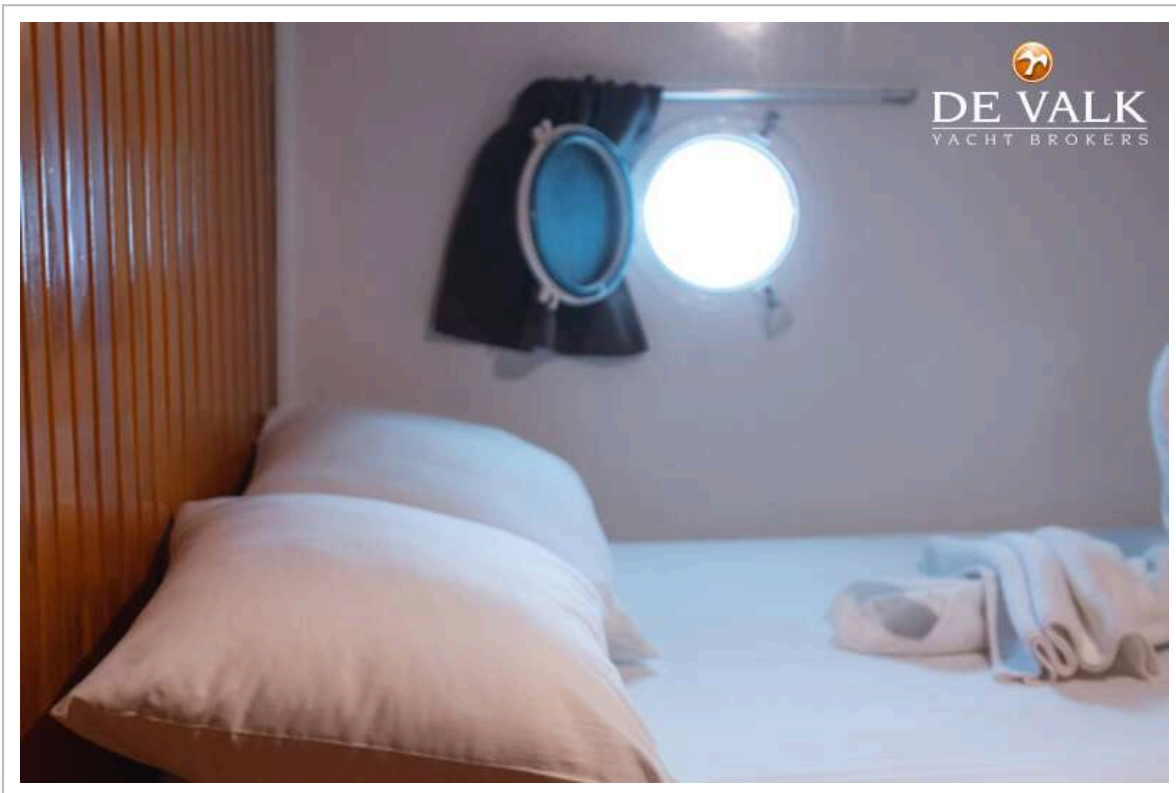
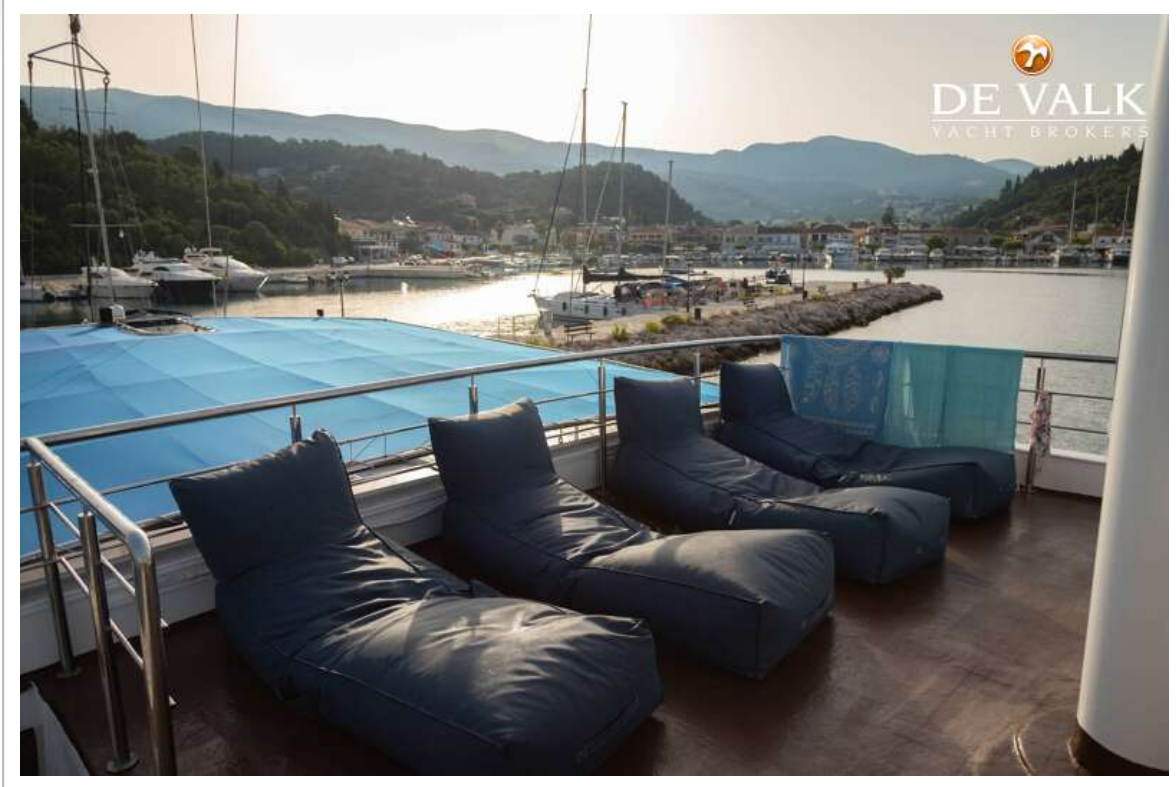


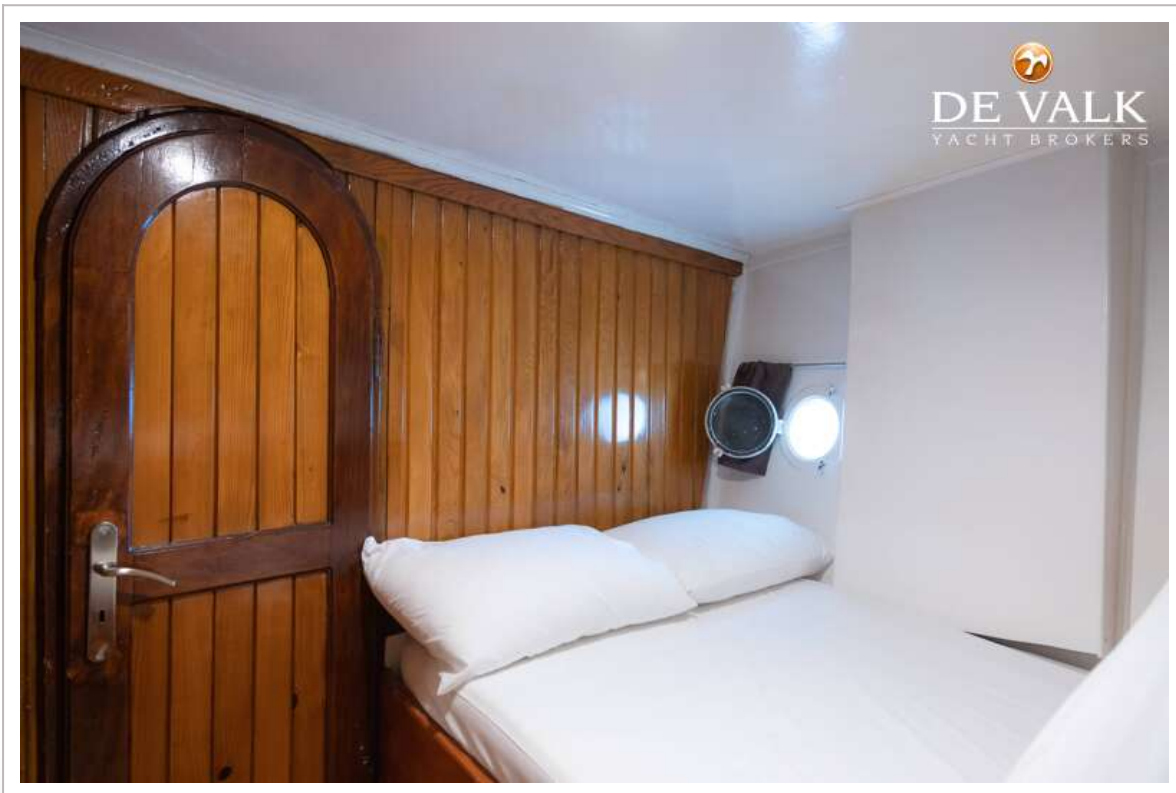
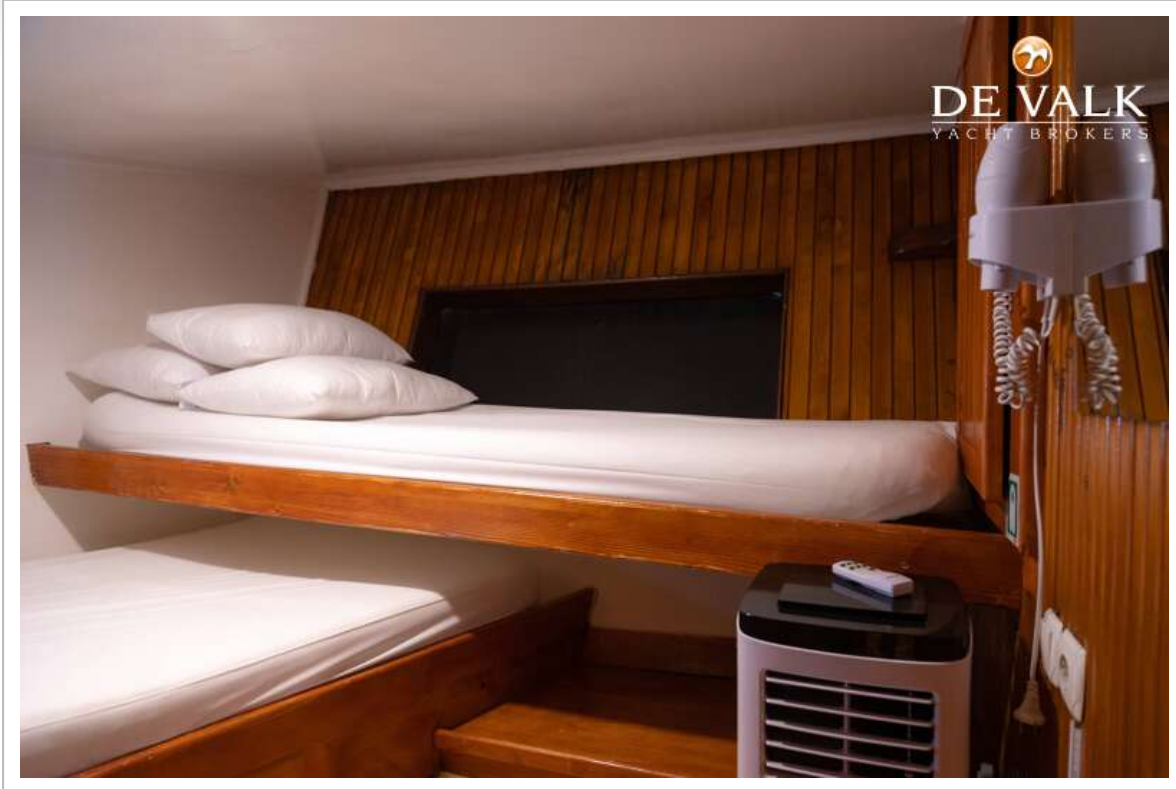


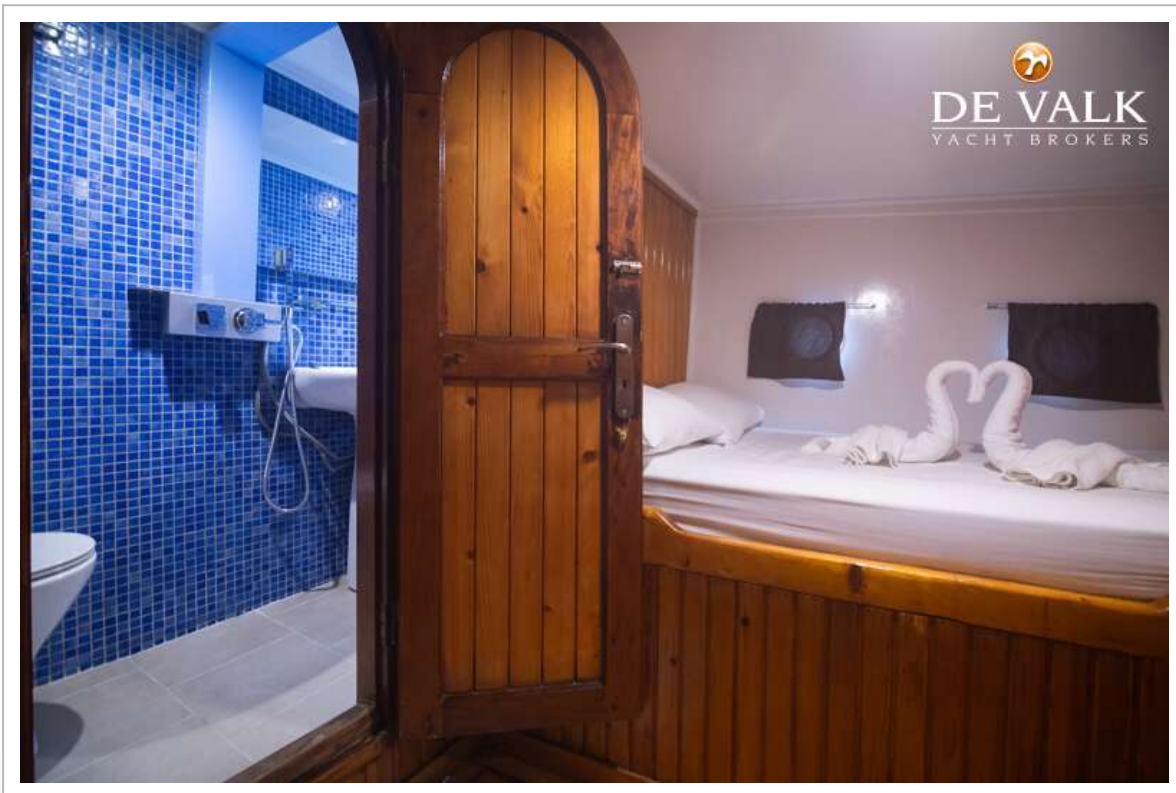
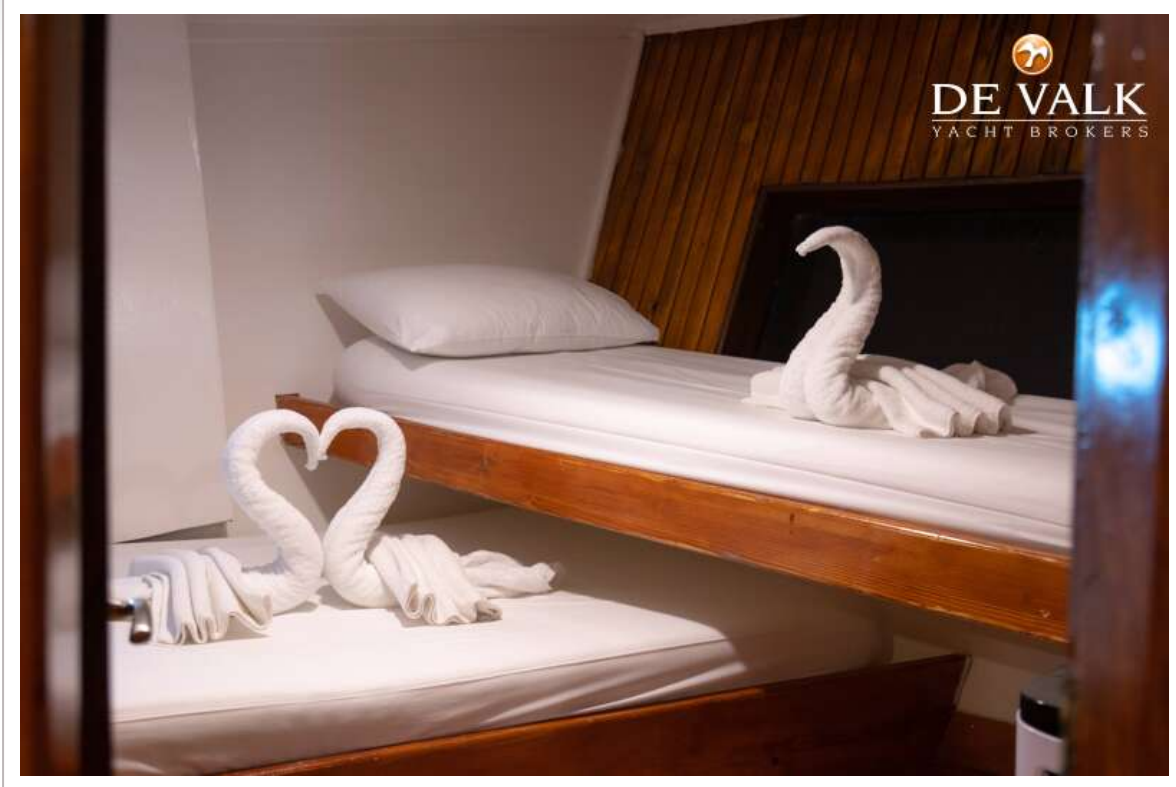
GULET 26.5

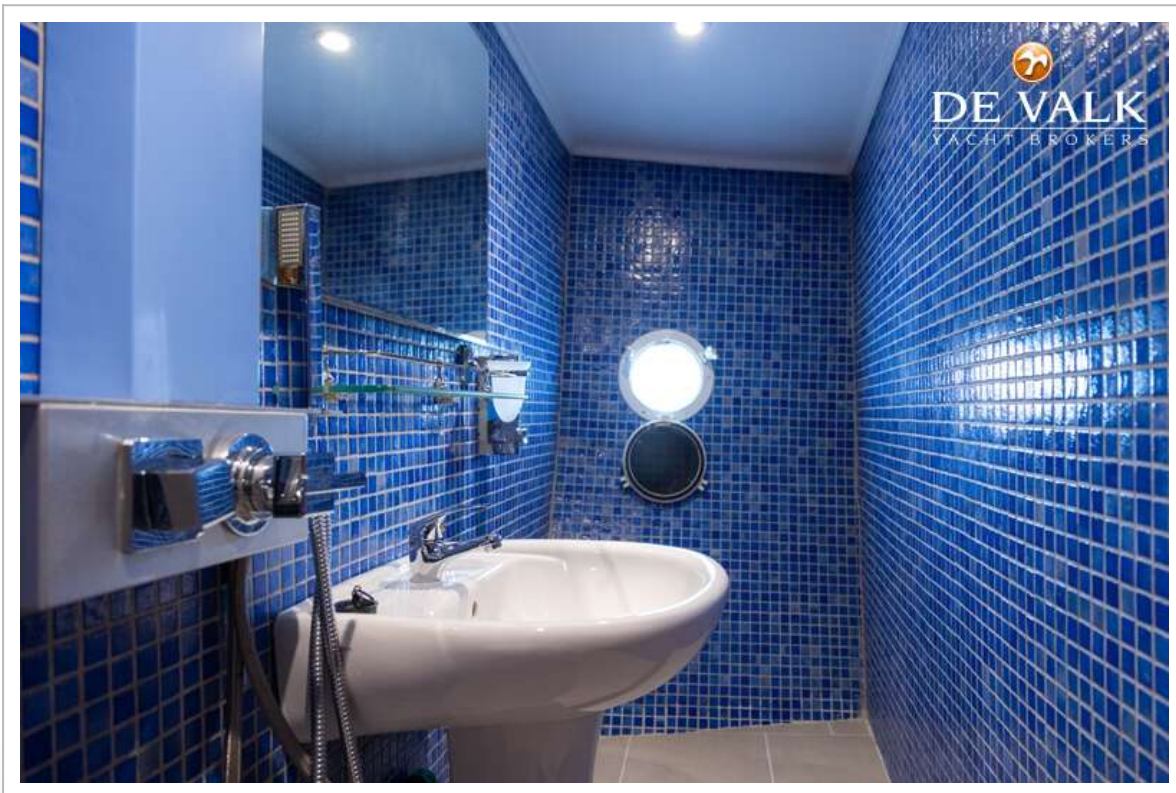


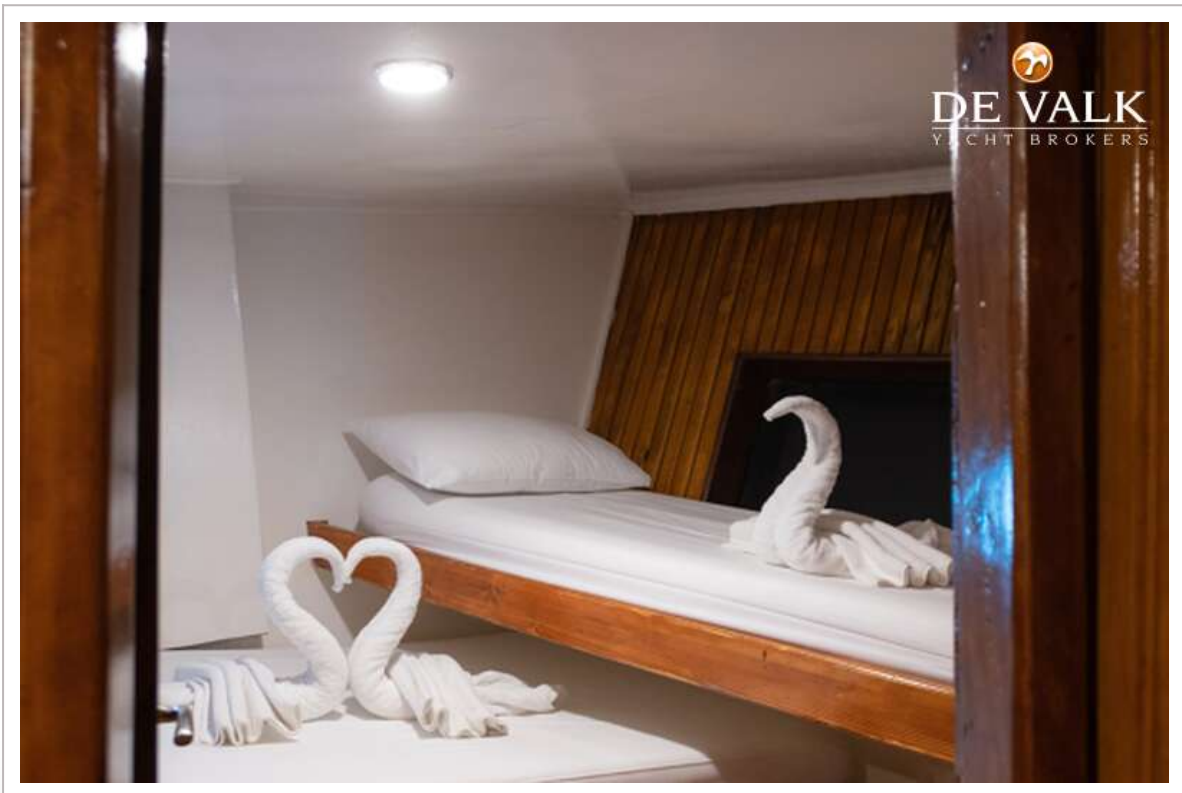
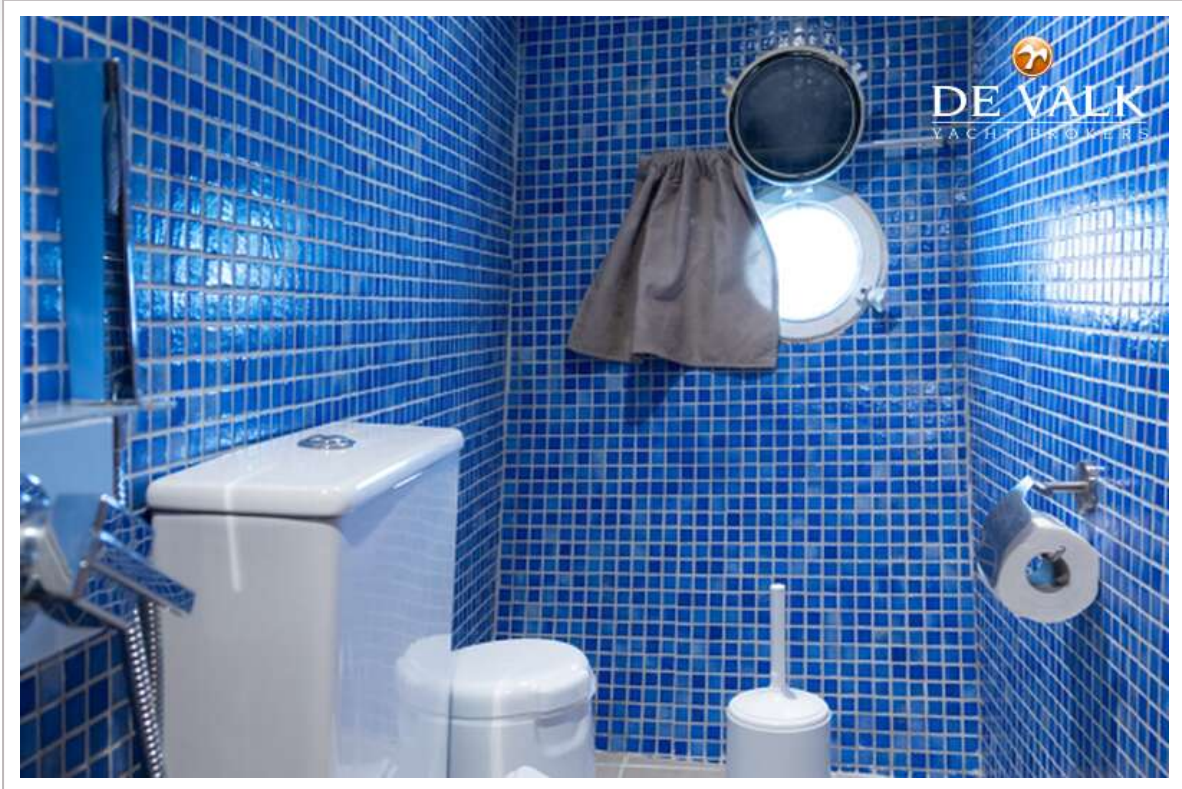
GULET 26.5













GULET 26.5



GULET 26.5

