



## LINEAROSSA SPARROW 58



# LINEAROSSA SPARROW 58

## BROKER'S COMMENTS

If you are looking for a unique, high performance Italian motor yacht look no further, this Linearossa is literally one of a kind. Reputedly the result of a collaboration between one of the founders of Pershing and a designer from Azimut it has the pedigree to stand out in any marina. PRIAMOS is being offered for sale with the option to take over the berth in Marina Santa Eulalia and also, separately, to purchase the charter company which manages the boat. Photographs supplied by the owner.

*Robert Corden*

## SPECIFICATIONS

<b>Dimensions</b>	18.32 x 4.82 x 1.06 (m)	<b>Builder</b>	Linea Rossa srl
<b>Built</b>	2009	<b>Cabins</b>	2
<b>Material</b>	GRP	<b>Berths</b>	4
<b>Engine(s)</b>	2 x MAN D2840LE423 diesel	<b>Hp/Kw</b>	2 x 1,100.00 (hp), 809.60 (kw)
<b>Asking price</b>	€ 480.000 (VAT Not paid)	<b>Lying</b>	at sales office

## CONTACT

<b>Sales office</b>	De Valk Ibiza	<b>Telephone</b>	+34 634 342 444
<b>Address</b>	Carrer del Pedrer 4, Ca Na Palava 07814 Santa Eulalia, Balea ES	<b>E-mail</b>	ibiza@devalk.nl

## DISCLAIMER

These particulars are given in good faith as supplied but cannot be guaranteed.



# LINEAROSSA SPARROW 58

## GENERAL

Model	LINEAROSSA SPARROW 58
Type	motor yacht
LOA (m)	18,32
Beam (m)	4,82
Draft (m)	1,06
Headroom (m)	2,00
Year built	2009
Launched	2009
Builder	Linea Rossa srl
Country	Italy
Gross tonnage	36,17
CE norm	B
Hull material	GRP
Hull colour	Light grey
Hull shape	V-shaped hull
Superstructure material	GRP
Rubbing strake	Stainless Steel
Deck material	GRP
Deck finish	non-skid moulded in
Cockpit deck finish	teak
Antifouling (year)	2023
Window material	tempered glass
Radar arch	non collapsible
Fuel tank (litre)	aluminium 3400
Freshwater tank (litre)	polyethylene 650
Wheel steering	hydraulic
Outside helm position	hydraulic

## ACCOMMODATION

Cabins	2
--------	---



# LINEAROSSA SPARROW 58

Berths	4
Crew cabin	Entrance in cockpit starboard side
Crew berths	1
Open cockpit	yes
Headroom saloon (m)	2.00m
Sliding roof	electric
Air-conditioning	reverse cycle airco Frigomar
Aft Cabin	yes
Sliding door to cockpit	yes
Galley	yes
Countertop	plastic
Sink	stainless steel
Cooker	electric Baumatic 2 burner ceramic
Microwave/oven combi	AEG Micromat DUO
Fridge	yes
Freezer	yes
Hot water system	220V + engine
Owners cabin	double bed
Bed length (m)	1.95
Wardrobe	hanging and shelves
Bathroom	en suite
Toilet	en suite
Toilet system	electric Tecma
Wash basin	in the bathroom
Shower	en suite
Extra info	Telefunken 24" TV
Guest cabin 1	twin single
Bed length (m)	1.95
Wardrobe	hanging and shelves
Bathroom	separate
Toilet	shared Also used as day head
Toilet system	electric Tecma



Wash basin	in the bathroom
Shower	shared
Extra info	Accent leather cladding on bulkheads and wardrobe doors
Crew cabin(s)	yes
Toilet (crew)	yes
Wash basin	yes
Shower (crew)	yes
Wet bar	Cockpit port side

## MACHINERY

No of engines	2
Make	MAN
Type	D2840LE423
HP	1100
kW	809.60
Fuel	diesel
Year installed	2008
Year of overhaul	2020 and 2023
Maximum speed (kn)	45
Cruising speed (kn)	34
Engine cooling system	freshwater heat exchanger
Drive	surface drive
Engine controls	electrical ZF Smart Command
Gearbox	hydraulic
Bowthruster	electric Side Power
Exhaust	watercooled
Propeller type	fixed
Propeller blades	6 blades
Propeller shaft material	stainless steel
Shaft lubrication	water
Electric bilge pump	yes



<b>Bilge alarm</b>	yes
<b>Electrical installation</b>	24V / 220 V with Easy View monitoring panel
<b>Generator</b>	wet exhaust Mase 11 kVA
<b>Running hours generator</b>	228
<b>Batteries</b>	yes
<b>Start battery</b>	yes
<b>Service battery</b>	yes
<b>Battery charger</b>	Victron Skylla-i 24V / 100A
<b>Inverter</b>	Mastervolt
<b>Shorepower</b>	with cable 220V
<b>Trimtabs</b>	Hydraulic
<b>Extra info</b>	Racor fuel filters

## NAVIGATION

<b>Compass</b>	Plastimo magnetic
<b>Multi control display</b>	Raymarine Tridata
<b>VHF</b>	Ray 240E
<b>Autopilot</b>	Navicontrol AP 303 Gold
<b>Plotter/GPS</b>	Raymarine
<b>EPIRB</b>	Kannad Marine
<b>Navigation lights</b>	yes

## EQUIPMENT

<b>Fixed windscreen</b>	yes
<b>Fixed hardtop</b>	yes
<b>Cockpit cushions</b>	yes
<b>Cockpit table</b>	yes
<b>Bathing platform</b>	yes
<b>Boarding ladder</b>	stainless steel
<b>Gangway</b>	Besenzoni 2 stage, integrated into bathing platform
<b>Deck shower</b>	yes



# LINEAROSSA SPARROW 58

<b>Anchor</b>	Bruce 30 Kg
<b>Anchor chain</b>	yes
<b>Windlass</b>	electrical Lofrans Project 1500 with remote control
<b>Windlass aft</b>	electrical Lofrans mooring windlasses port and stbd under GRP covers
<b>Dinghy</b>	inflatable
<b>Outboard</b>	Yamaha 4 HP
<b>Pushpit</b>	Stainless Steel
<b>Lifejackets</b>	yes
<b>Wiper</b>	yes
<b>Horn</b>	electric
<b>Fenders</b>	yes
<b>Mooring lines</b>	yes
<b>TV</b>	Sharp Aquos 30" in saloon
<b>Radio-cd player</b>	yes
<b>Cockpit speakers</b>	yes
<b>Auto extinguisher system</b>	Seafire with control panel at helm

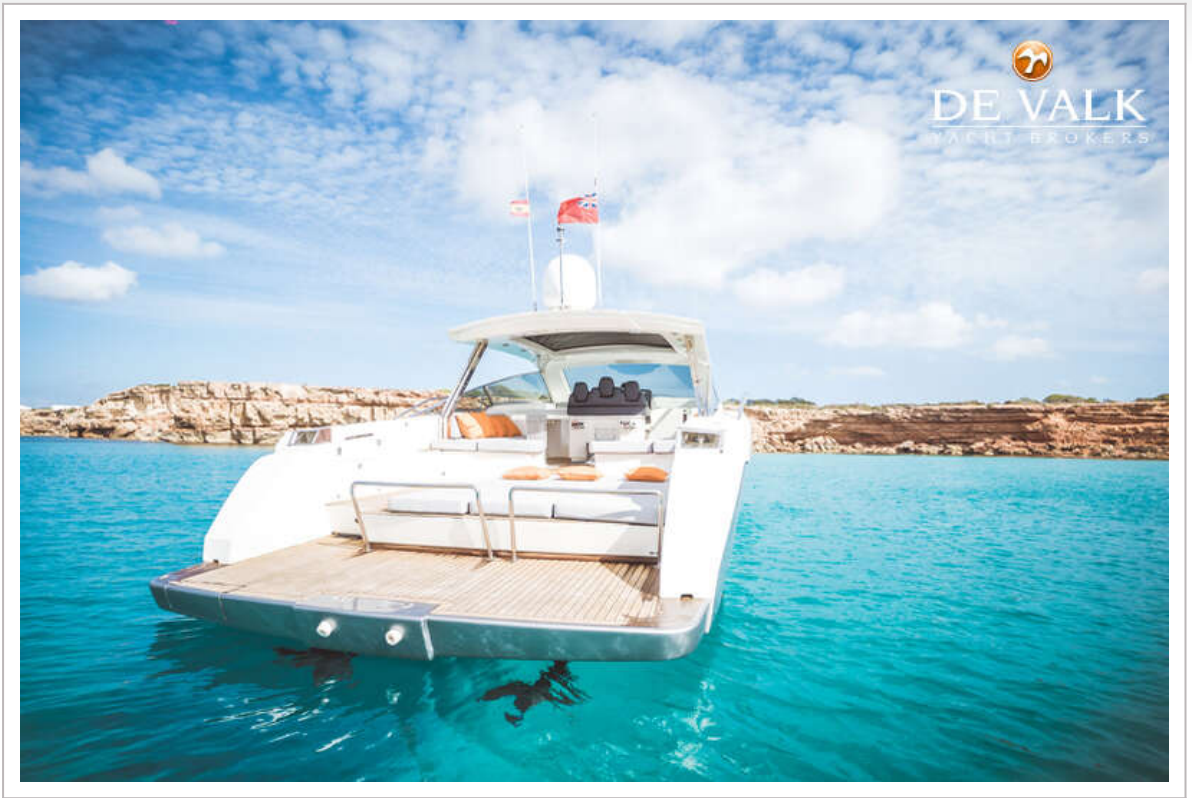


## LINEAROSSA SPARROW 58





LINEAROSSA SPARROW 58

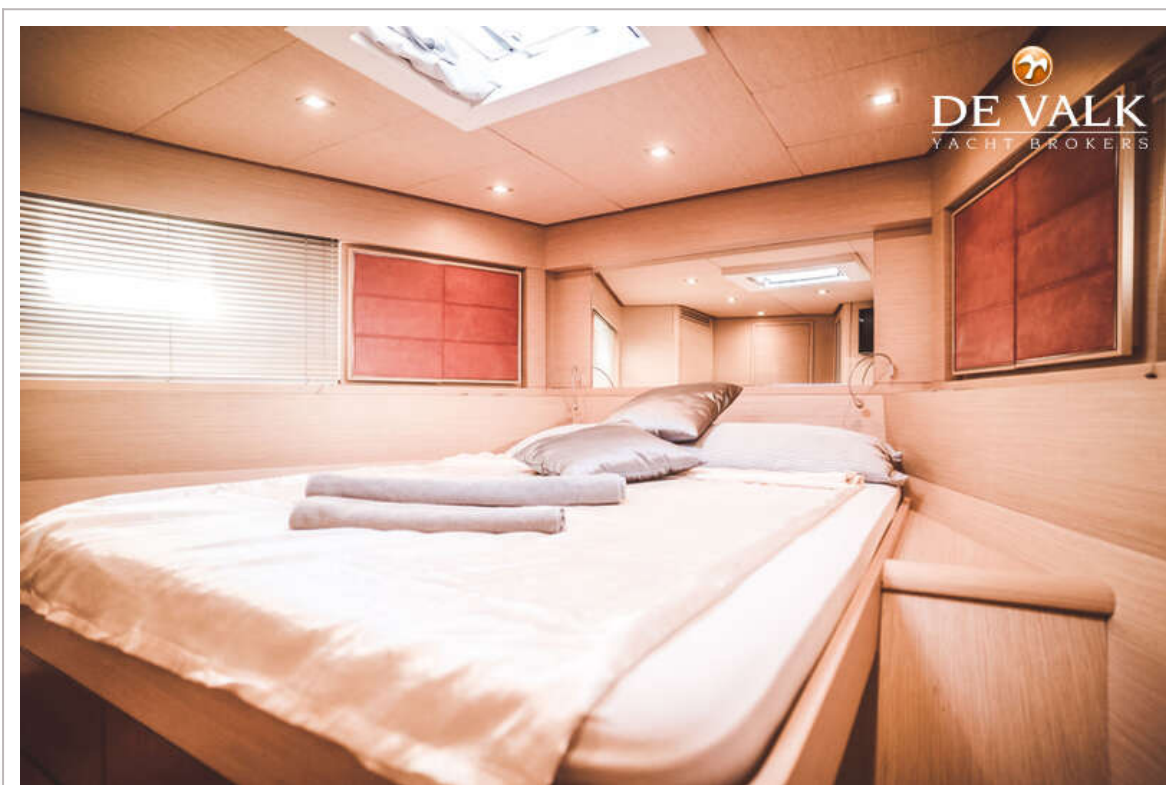


## LINEAROSSA SPARROW 58

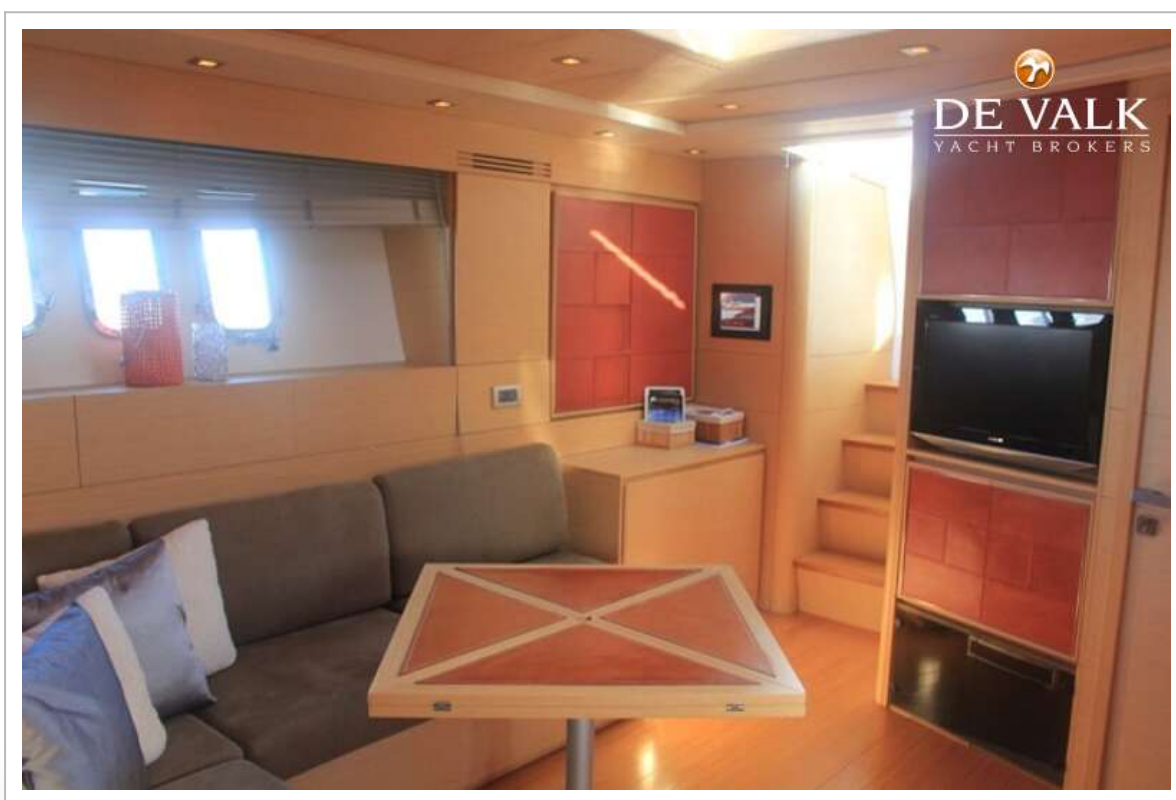
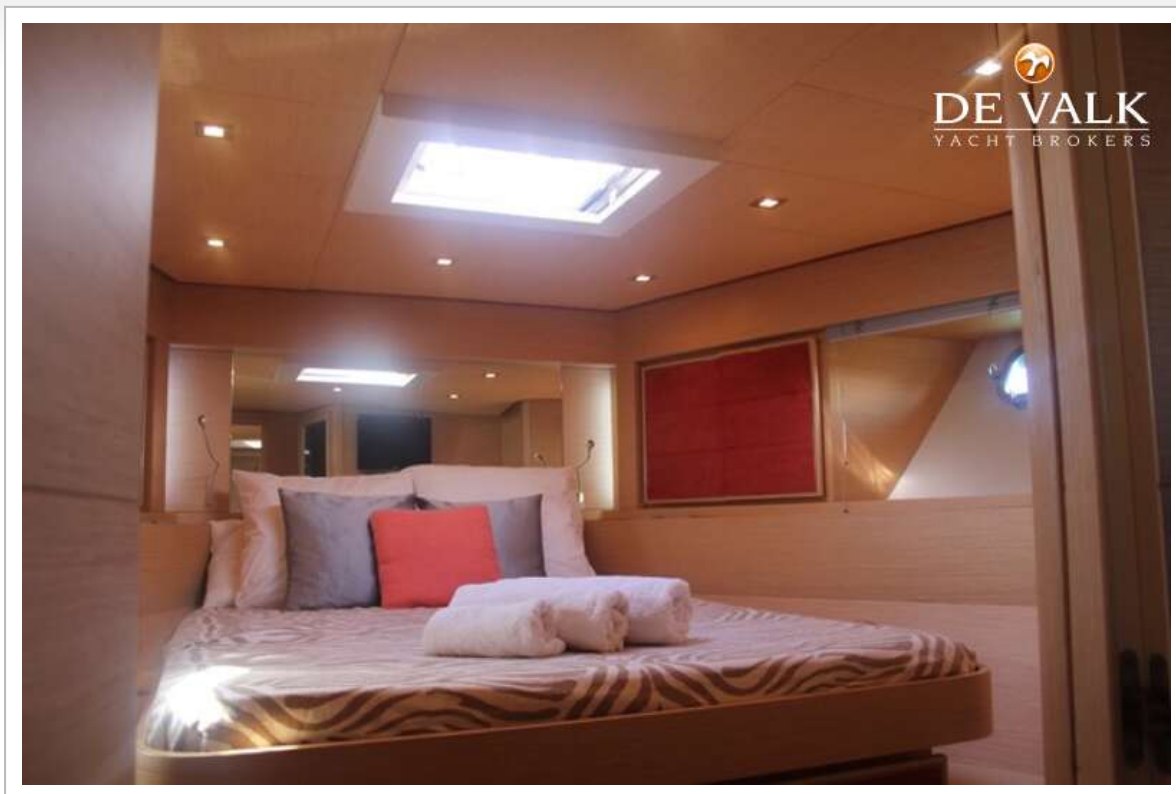




## LINEAROSSA SPARROW 58



## LINEAROSSA SPARROW 58



## LINEAROSSA SPARROW 58

