



VARNEBANK 79F



BROKER'S COMMENTS

VARNEBANK (1965/2007) is a heavy, seaworthy, long-range expedition yacht. She was originally built in Holland for fishing in the North Sea and was later converted to a long-range yacht capable of crossing any ocean. All of the conversion work was done in Holland from 2004 to 2007 where she was totally rebuilt. An absolutely stunning and very capable explorer with a superb layout for long-range expeditions. Highly maintained and turn key ready. Located in CA, USA.

Tue Simon Fasting

SPECIFICATIONS

Dimensions	24.00 x 5.84 x 3.05 (m)	Builder	Van der Molen
Built	1965	Cabins	5
Material	Steel	Berths	10
Engine(s)	1 x Mitsubishi S6R2-MPTA diesel	Hp/Kw	580.00 (hp), 426.88 (kw)
Asking price	\$ 1.295.000 (VAT Exempt)	Lying	elsewhere / Not at sales office

CONTACT

Sales office	De Valk Barcelona	Telephone	+34 932 202 825
Address	Barcelona region 08392 Barcelona ES	E-mail	barcelona@devalk.nl

DISCLAIMER

These particulars are given in good faith as supplied but cannot be guaranteed.



GENERAL

Model	VARNEBANK 79F
Type	motor yacht
LOA (m)	24,00
Beam (m)	5,84
Draft (m)	3,05
Year built	1965
Launched	Totally rebuilt 2007
Builder	Van der Molen
Country	The Netherlands
Designer	Pieter Beeldsnijder (int.Luro Enkhuizen)
Displacement (t)	81
Hull material	steel
Hull colour	blue
Superstructure material	aluminium
Deck finish	synthetic teak
Antifouling (year)	2024
Window frame	stainless steel
Window material	tempered glass
Fuel tank (litre)	steel 22,000 liters in 4 tanks
Level indicator (fuel tank)	yes
Freshwater tank (litre)	polyethylene 5000
Level indicator (freshwater)	yes
Blackwater tank (litre)	steel 2000
Level indicator (blackwater)	yes
Blackwater tank extraction	deck extraction + pump

ACCOMMODATION

Cabins	5
Berths	10
Saloon	TV, 6 surround speakers



Heating	: Diesel Fired Boiler with hot water radiators
Galley	Open
Sink	stainless steel
Cooker	Siemens 4-Burner Induction Stovetop ED 651FSB1E
Extractor	Range Hood, Stainless Siemens Extraction Fan
Microwave	Sharp Microwave R20 MPS
Microwave/oven combi	Siemens Microwave/Oven 17" HFT 85950 WL
Fridge	Stainless Dual-Drawer Fridge, U-Line
Freezer	Stand-Up Freezer, Edy DV 3064
Wine cooler	Yeti
Hot water system	Reinstrom, 50l 240v Stainless Steel
Water pressure system	electrical
Dishwasher	yes
Coffee maker	Philips
Crockery	yes
Owners cabin	double bed
Wardrobe	hanging and shelves
Bathroom	en suite
Shower	yes
Bath tub	yes
Extra info	Sony TV 17" , intercom, skylight
Guest cabin 1	double bed
Wardrobe	hanging and shelves
Bathroom	en suite
Extra info	With desk
Guest cabin 2	double bed
Wardrobe	drawers and shelves
Bathroom	en suite
Extra info	With desk
Guest cabin 3	twin single
Wardrobe	drawers and shelves
Bathroom	yes



Toilet	shared
Shower	shared
Extra info	With desk
Guest cabin 4	twin single
Bathroom	yes
Toilet	shared
Shower	shared
Crew cabin(s)	Guest 3 and 4 can alternate as crew cabins
Extra info	1 day toilet
Washing machine	Sigmans WV 2480
Dryer	Marnen CML 925
Extra info	Large office space with safe, storage and printer
Extra info	yes

MACHINERY

No of engines	1
Make	Mitsubishi
Type	S6R2-MPTA
HP	580
kW	426.88
Fuel	diesel
Maximum speed (kn)	11
Cruising speed (kn)	8,5
Consumption (l/hr)	40
Range (nm)	3325
Engine hours	3642
Engine cooling system	freshwater heat exchanger
Engine controls	Engine & Anchor Controls with Perkins Throttle
Gearbox	Reintjes WAF 440 3.94:1 Reduction
Bowthruster	Perkins 4-236 85hp Driving Pump for Anchor Winch & Bow Thruster



Propeller blades	3 bronze
Propeller shaft material	130mm (5 1/4") Steel, Pressurized Grease, Lubricated
Electric bilge pump	yes
Bilge alarm	yes
Generator	Dual Voltage 230/400v AC 3 Phase Jelmer-ValkDiesel,230/400v 17KW
Running hours generator	5802
Generator 2	/Mitsubishi 4 Cycle Diesel 230/400v, 17kw
Running hours generator 2	5803
Start battery	Starting Batteries: (2) 12v Lifeline 8D AGM Lead-Acid M. free
Service battery	(6) Victron 165a/h 12v Gel Cell
Battery charger	(1) Victron Skyla TG 24v 100amp (1) Victron Skyla TG 24/120v
Inverter	(1) Victron 24v 1066 watts, (1) Victron 24v 5000 watts
Solar panel	4
Shorepower	with cable A/SEA 25kw 3 Phase Shore Power Converter, 230v/50hz
Watermaker	Spectra Newport 700 MK II, Z-ion Recharge Extender, 29gph
Stabilizers	Fin Roll Stabilizers: Matn's
Extra info	Emergency batteries (2) 12v Lifeline 4D AGM
Extra info	DC Alternators: 160amp Main Engine Alternator,
Extra info	Bilge pump High Capacity 3Phase AC Combination Fire/Bilge/Anchor

NAVIGATION

Compass	Furuno SC-30 Satellite Compass with True Heading
Depth sounder	Simrad EQ-32 Sounder with Graphic as well as Digital Display
Windset	Speed & Relative Direction Display
VHF	(2) Sailor 6222 VHF Transceivers with DSC, Sailor 6301
Autopilot	Robertson/Simrad AP-35 with Flux Gate Compass, Tiller Steering
Rudder angle indicator	yes
Radar	Furuno FR-8122 72 Mile



GPS	(2) Furuno GP-32 WAAS Units Interfaced to Radar & Chart Plotter
Plotter	Nobeltec/TimeZero Full Featured Navigation Software
Navtex	Furuno NX-300 Digital Navtex Receiver
Wifi antenna	Starlink
AIS receiver	Furuno FA-50 Class B AIS with Transmit/Receive
AIS transponder	yes
EPIRB	yes
Searchlight	yes
Loudhailer	Stento EBT-10 All Area Intercom System
Extra info	SAT com Sailor/Cobham Fleet One Inmarsat System

EQUIPMENT

Anchor	150 kg
Anchor chain	100m / 24mm
Anchor 2	150 kg
Anchor chain	160m / 16mm
Dinghy	12' AB RIB, Crane Launched with 30hp Outboard
Life raft	(2) Viking 8-Man Auto Deployed Life Rafts. SOLAS Rated
Life raft (pers)	2 x 8
Lifejackets	10 SOLAS
Lifebuoy	yes
Alarm system	Smoke / fire
Fire extinguisher	(7) Fire Extinguishers: (2) Halitron, (5) Foam

RIGGING

Mast lowering system	yes
-----------------------------	-----



VARNEBANK 79F



VARNEBANK 79F



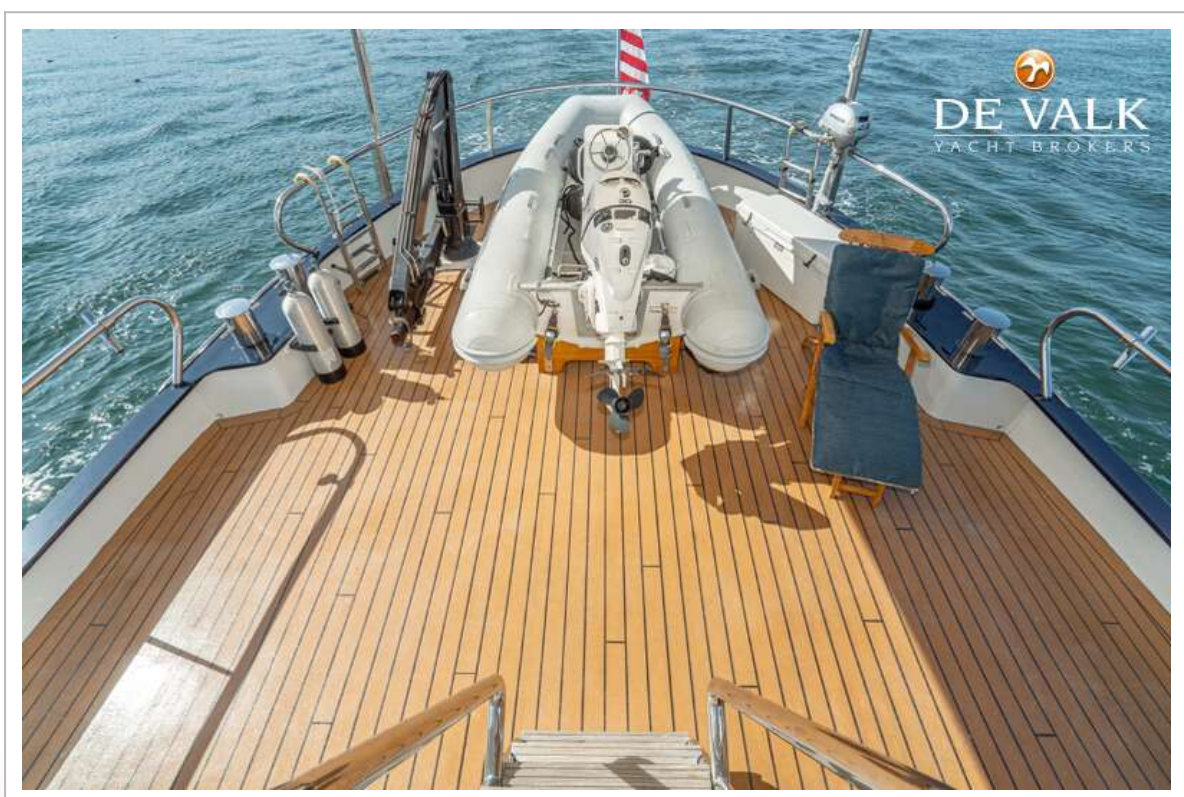


VARNEBANK 79F

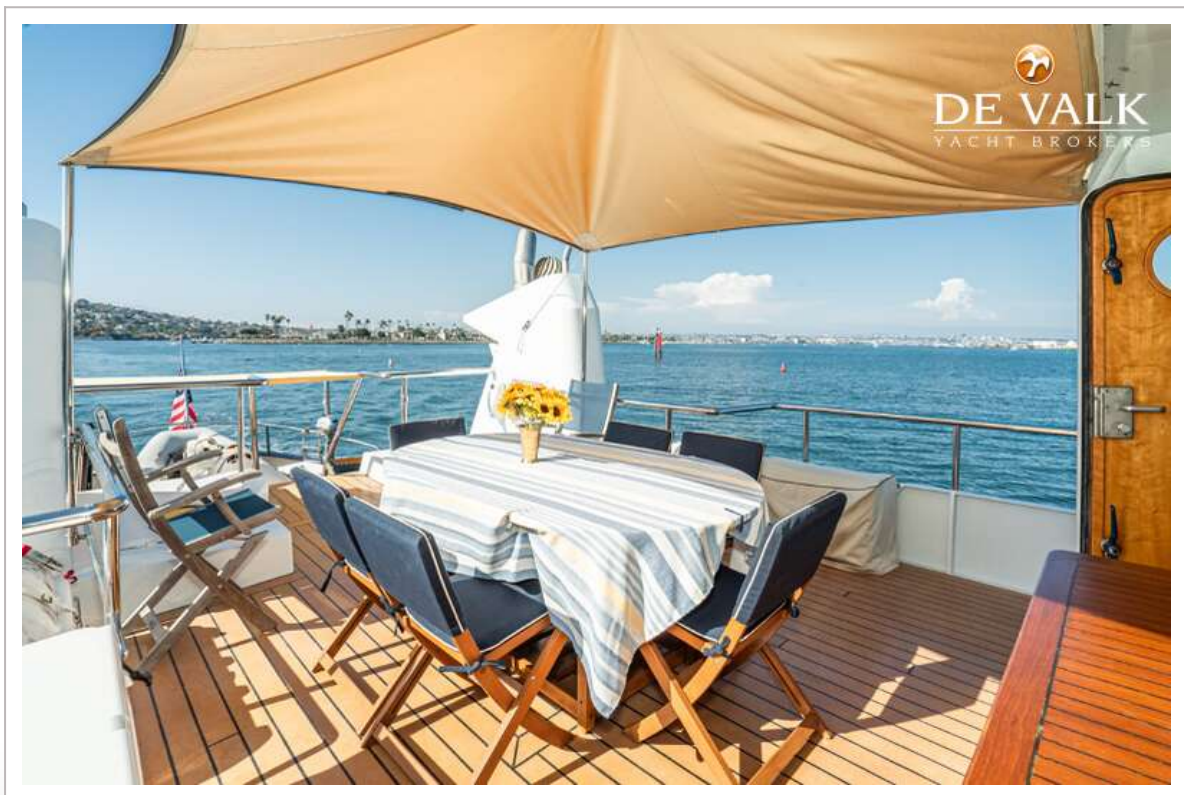




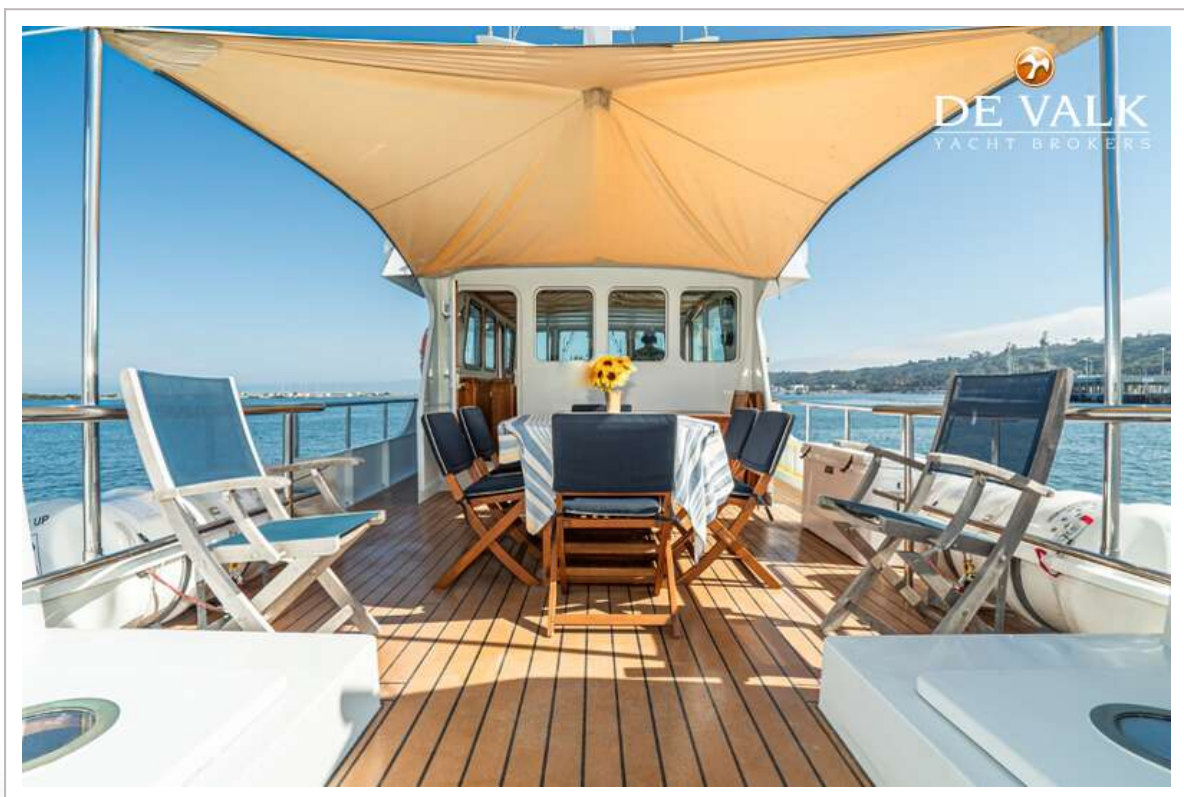
VARNEBANK 79F



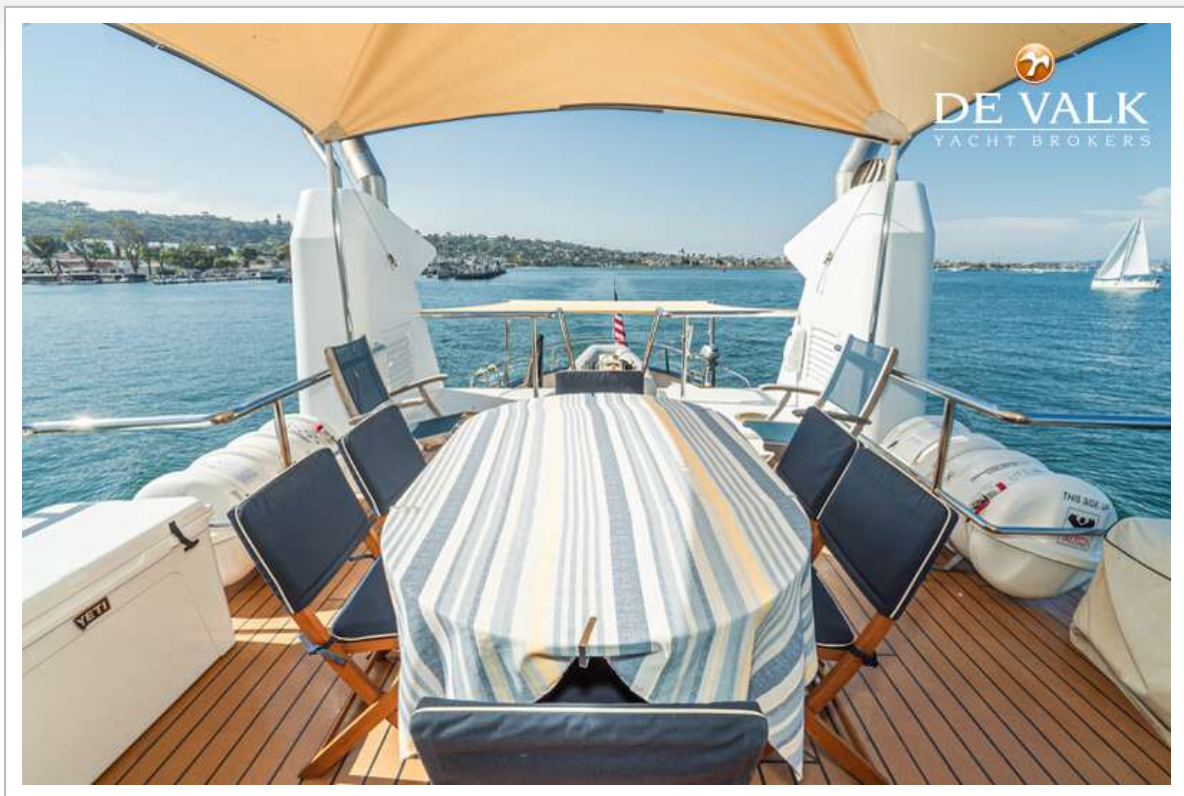
VARNEBANK 79F



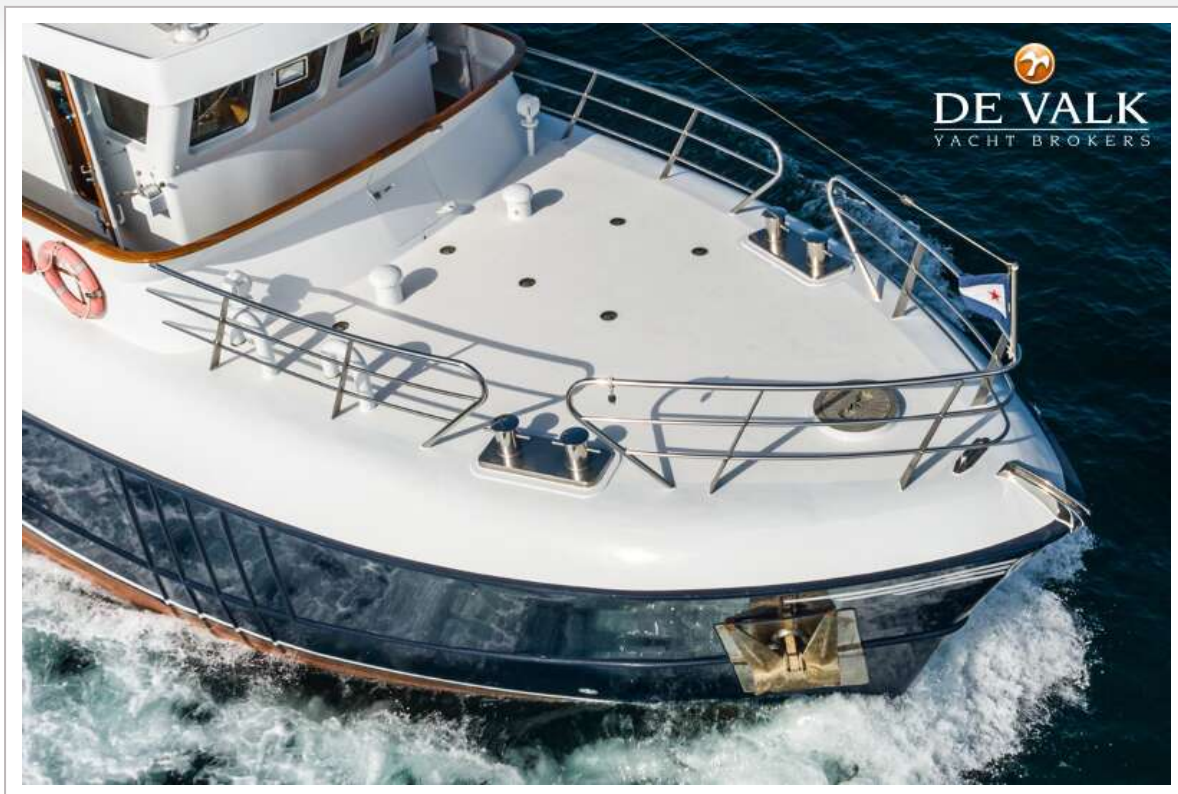
VARNEBANK 79F



VARNEBANK 79F



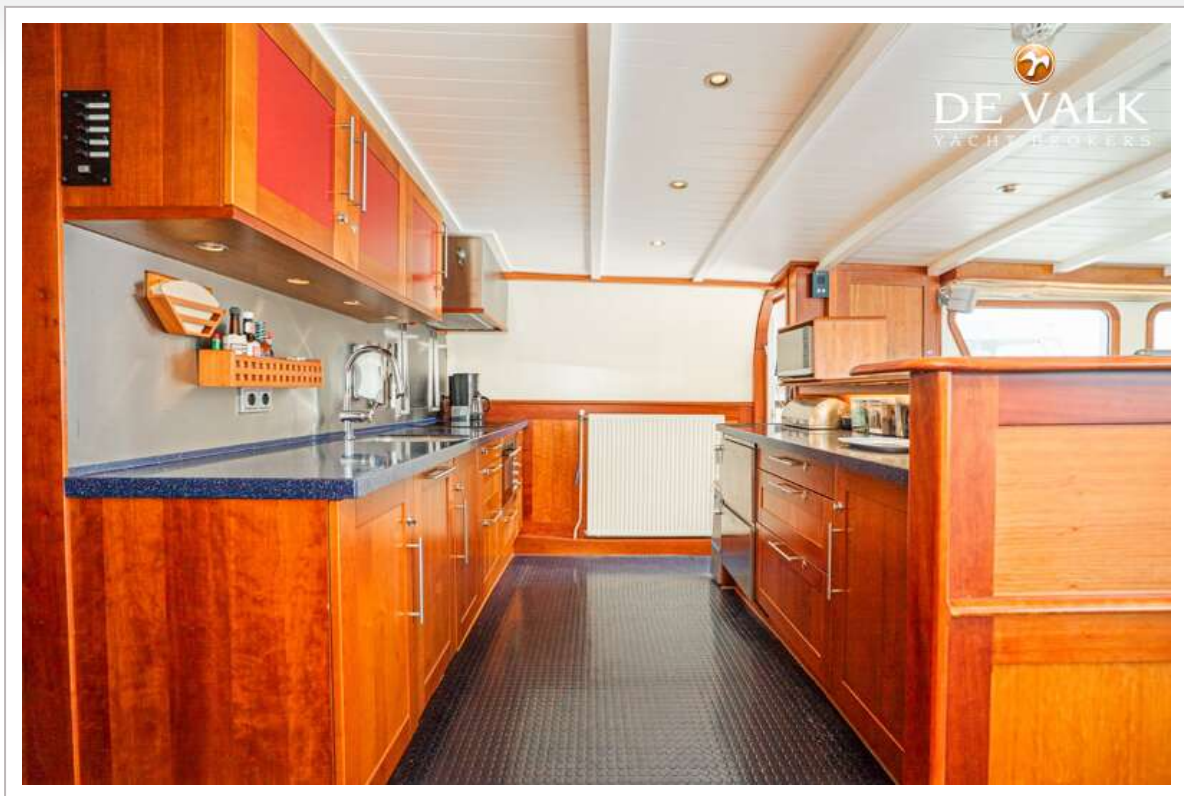
VARNEBANK 79F







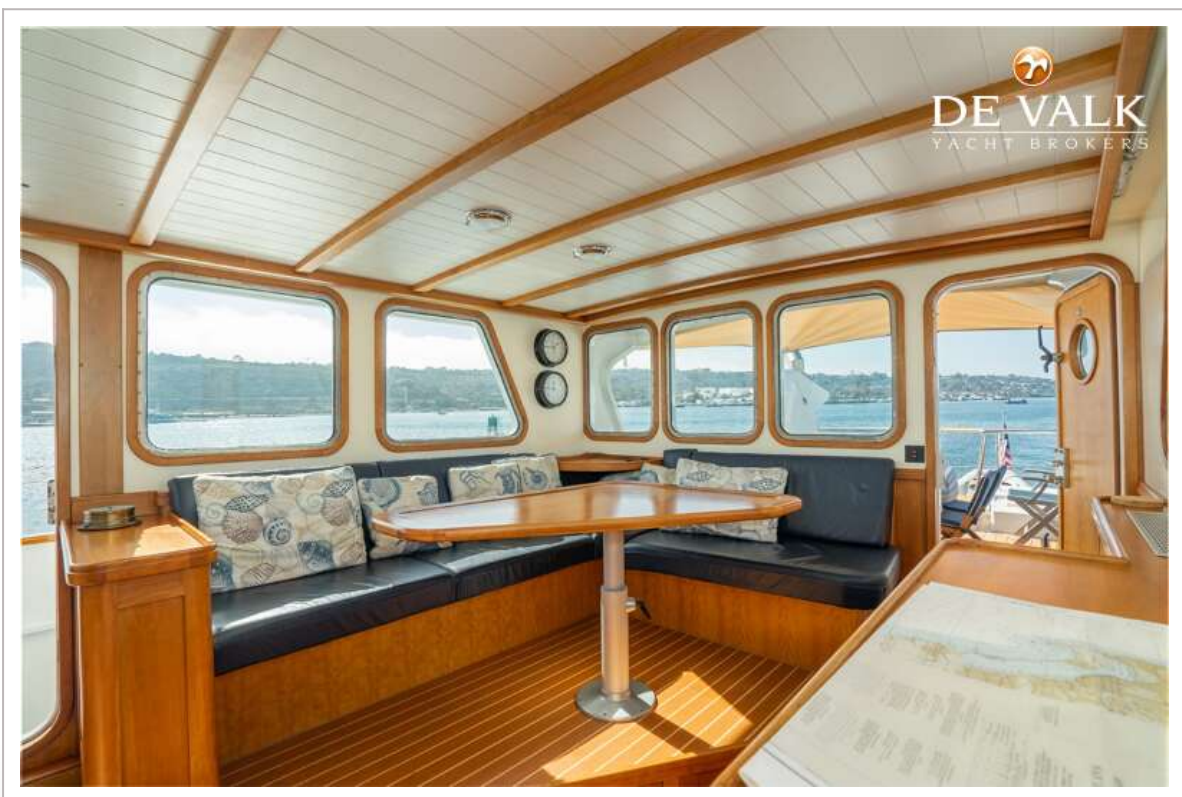
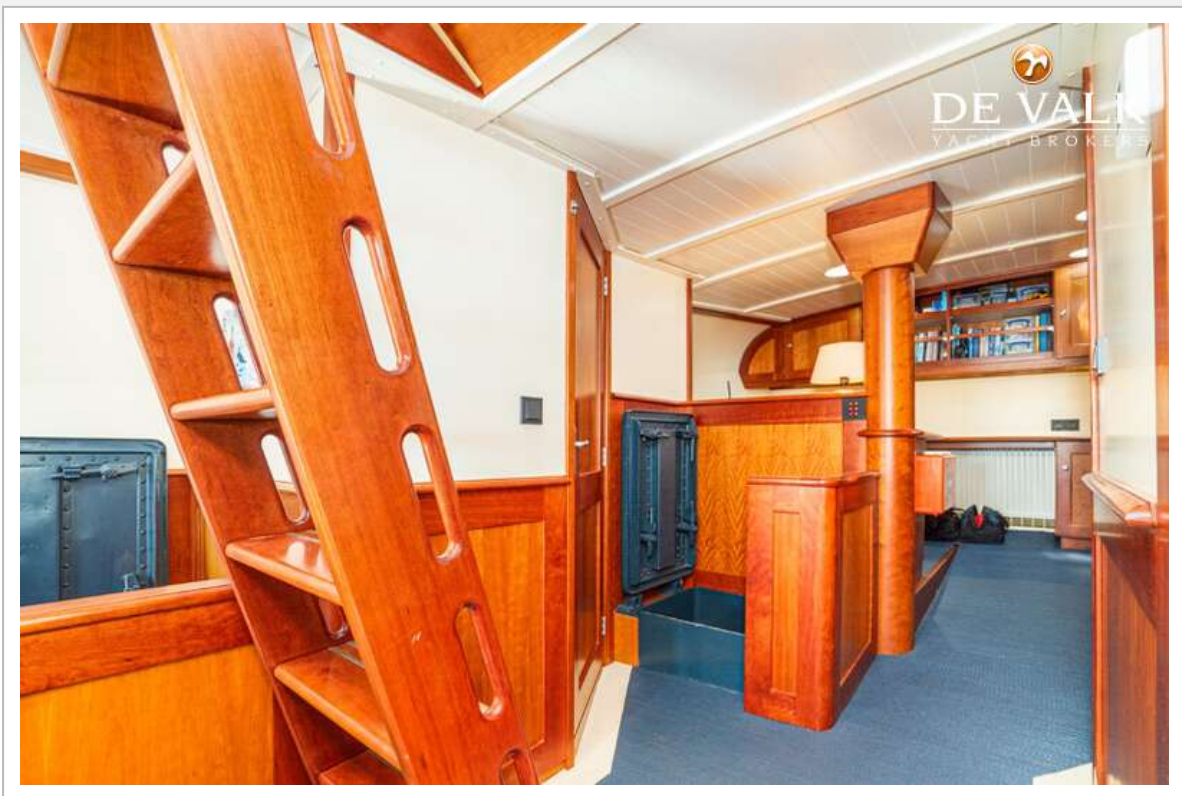
VARNEBANK 79F



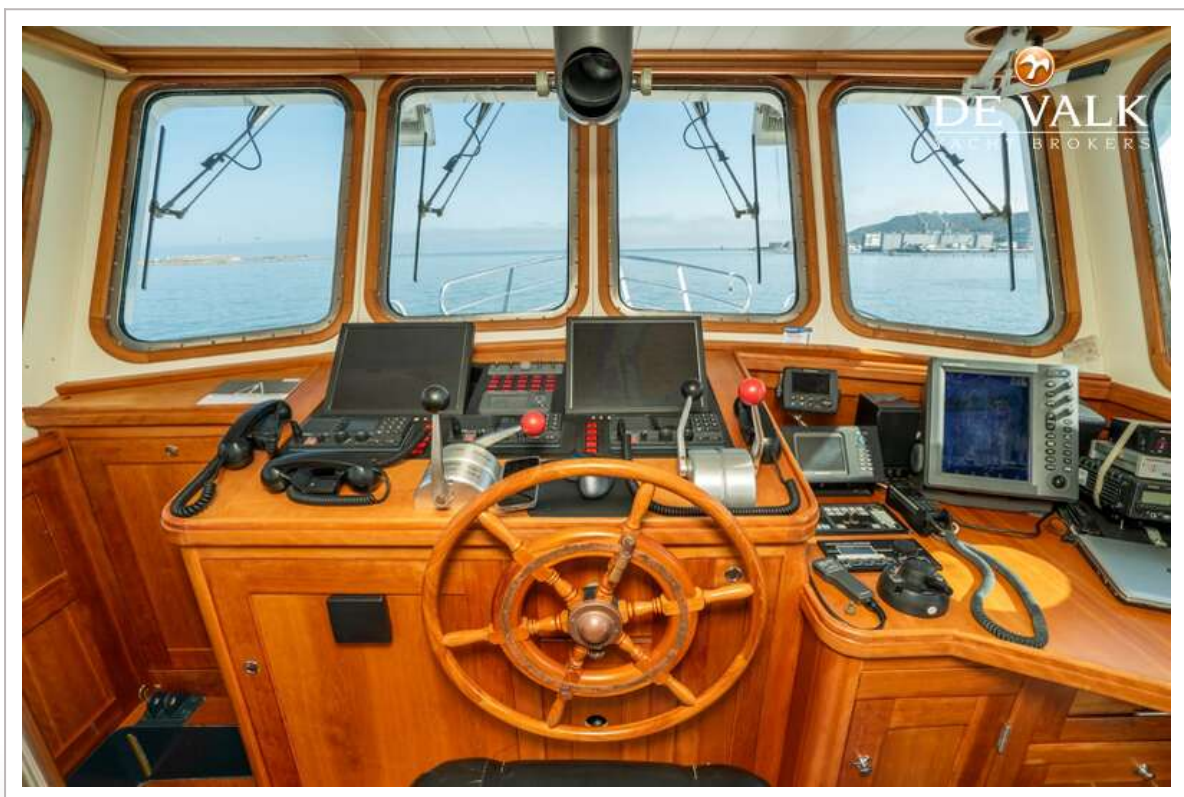
VARNEBANK 79F



VARNEBANK 79F



VARNEBANK 79F



VARNEBANK 79F





