



## NIDELV 33 CLASSIC

# NIDELV 33 CLASSIC

## BROKER'S COMMENTS

The Nidelv 33 Classic 33 "Anja" was built in 2006 and has 6 sleeping places in two cabins and a folding bed in the salon. The boat is equipped with a 110 Ps Volvo Penta diesel engine, electric bow thruster. This Nidelv 33 Classic is in super condition and looks like new.

*Pieter Bosma*

## SPECIFICATIONS

<b>Dimensions</b>	10.40 x 3.30 x 0.92 (m)	<b>Builder</b>	Zaadnoordijk
<b>Built</b>	2006	<b>Cabins</b>	2
<b>Material</b>	GRP	<b>Berths</b>	6
<b>Engine(s)</b>	1 x Volvo Penta D3-110I-B HS diesel	<b>Hp/Kw</b>	110.00 (hp), 80.96 (kw)
<b>Asking price</b>	sold (VAT )	<b>Lying</b>	at sales office

## CONTACT

<b>Sales office</b>	De Valk Sneek	<b>Telephone</b>	+31 (0)515 42 80 30
<b>Address</b>	Zwolsmanweg 7 8606 KC Sneek NL	<b>E-mail</b>	sneek@devalk.nl

## DISCLAIMER

These particulars are given in good faith as supplied but cannot be guaranteed.



# NIDELV 33 CLASSIC

## GENERAL

Model	NIDELV 33 CLASSIC
Type	motor yacht
LOA (m)	10,40
Beam (m)	3,30
Draft (m)	0,92
Air draft (m)	3,70
Air draft min (m)	2,40
Headroom (m)	1,95
Year built	2006
Builder	Zaadnoordijk
Country	The Netherlands
Designer	Vripack
Displacement (t)	7
CE norm	C
Hull material	GRP
Hull colour	off-white
Hull shape	round-bilged
Keel type	long keel
Superstructure material	GRP
Rubbing strake	rubber
Deck material	GRP
Deck finish	synthetic teak
Cockpit deck finish	synthetic teak
Dorades	yes
Window frame	aluminium
Window material	glass
Deckhatch	yes
Mast can be lowered	manual
Fuel tank (litre)	polyethylene 480 Ltr
Level indicator (fuel tank)	Wema



# NIDELV 33 CLASSIC

Freshwater tank (litre)	polyethylene 225 Ltr
Level indicator (freshwater)	Wema
Blackwater tank (litre)	polyethylene 122 Ltr
Level indicator (blackwater)	Wema
Wheel steering	hydraulic
Inside helm position	yes

## ACCOMMODATION

Cabins	2
Berths	6
Interior	teak
Floor	teak and holly
Open cockpit	yes
Doghouse	yes
Saloon	yes
Headroom saloon (m)	1,94 m.
Heating	diesel ducted hot air Webasto
Chart table	yes
Dinette to convert into berth	yes
Sliding door to cockpit	yes
Galley	yes
Countertop	Duropol
Sink	stainless steel
Cooker	calor gas 2 burner
Oven	yes
Fridge	Isotherm (new 2024)
Hot water system	220V + engine Boiler
Water pressure system	electrical
Owners cabin	yes
Bed length (m)	2.000 m.
Wardrobe	hanging and shelves



# NIDELV 33 CLASSIC

Bathroom	shared
Toilet	yes
Toilet system	electric
Wash basin	in the bathroom
Shower	shared
Guest cabin 1	single bed
Bed length (m)	2.00 m.
Wardrobe	shelves

## MACHINERY

No of engines	1
Make	Volvo Penta
Type	D3-110I-B HS
HP	110
kW	80.96
Fuel	diesel
Year installed	2006
Engine cooling system	freshwater heat exchanger
Drive	shaft
Shaft seal	yes
Engine controls	bowden cable
Gearbox	hydraulic
Bowthruster	electric
Exhaust	watercooled
Thrust bearing	yes
Propeller type	fixed
Propeller blades	5
Propeller shaft material	stainless steel
Shaft lubrication	water
Manual bilge pump	yes
Electrical installation	12/240V



# NIDELV 33 CLASSIC

<b>Batteries</b>	yes
<b>Start battery</b>	Optima Red Top 50 Ah (new 2024)
<b>Service battery</b>	1x 180 Ah
<b>Bowthruster battery</b>	New 2024
<b>Solar panel</b>	With Meter MT1
<b>Shorepower</b>	yes

## NAVIGATION

<b>Compass</b>	yes
<b>Log</b>	yes
<b>VHF handheld</b>	yes
<b>Rudder angle indicator</b>	yes
<b>Plotter/GPS</b>	Raymarine
<b>Navigation lights</b>	yes

## EQUIPMENT

<b>Cockpit cover</b>	New in 2022
<b>Cockpit cushions</b>	yes
<b>Cockpit table</b>	yes
<b>Bathing platform</b>	yes
<b>Boarding ladder</b>	yes
<b>Anchor</b>	yes
<b>Anchor chain</b>	yes
<b>Windlass</b>	electrical
<b>Sea railing</b>	stainless steel
<b>Grab rail (superstructure)</b>	stainless steel
<b>Rope cutter</b>	yes
<b>Wiper</b>	yes
<b>Horn</b>	electric
<b>Fenders</b>	yes
<b>Mooring lines</b>	yes



TV

yes

Fire extinguisher

yes



# NIDELV 33 CLASSIC





# NIDELV 33 CLASSIC



# NIDELV 33 CLASSIC

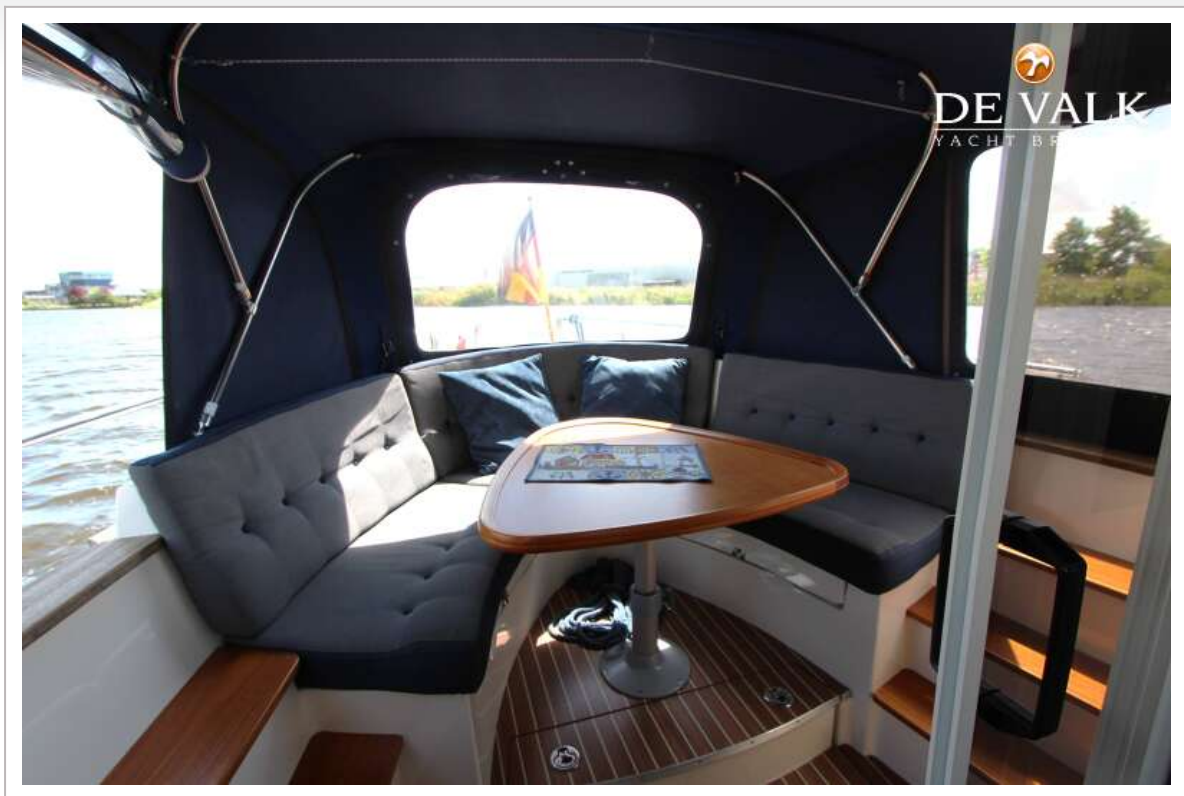




# NIDELV 33 CLASSIC



# NIDELV 33 CLASSIC





# NIDELV 33 CLASSIC



# NIDELV 33 CLASSIC





# NIDELV 33 CLASSIC



# NIDELV 33 CLASSIC





# NIDELV 33 CLASSIC

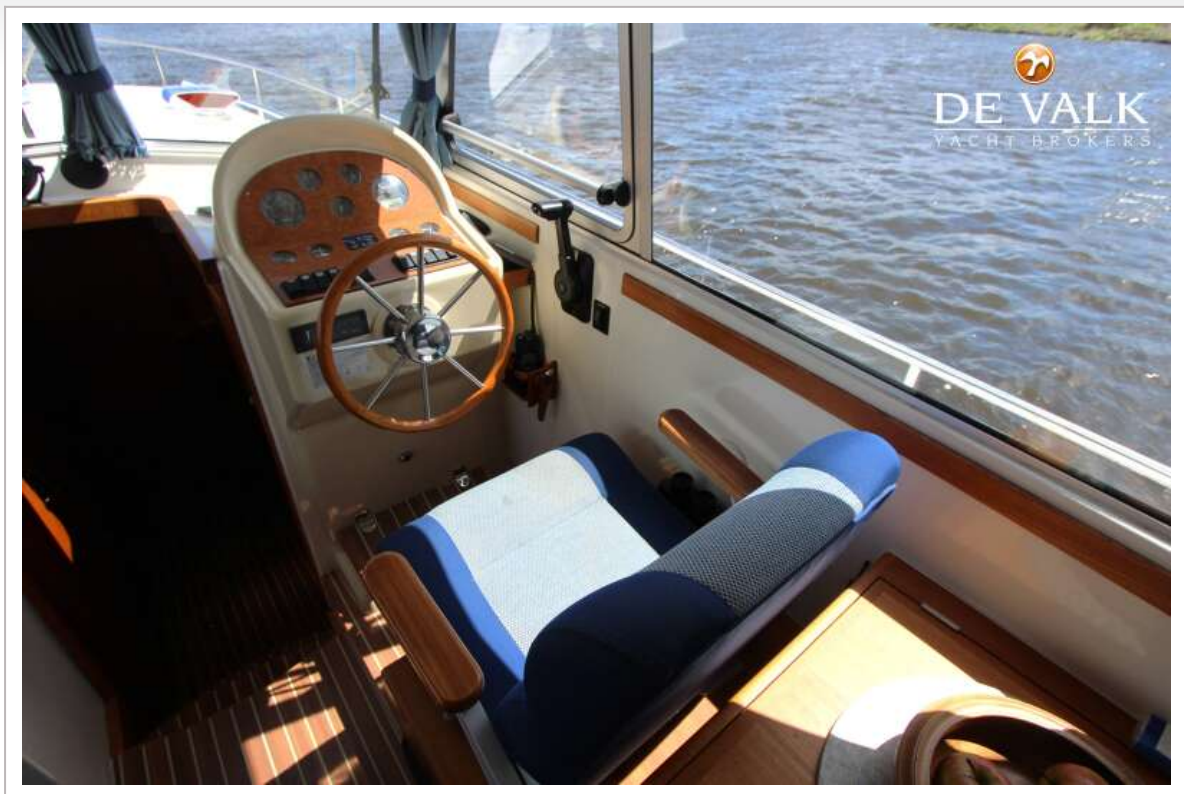


# NIDELV 33 CLASSIC





# NIDELV 33 CLASSIC



# NIDELV 33 CLASSIC





# NIDELV 33 CLASSIC

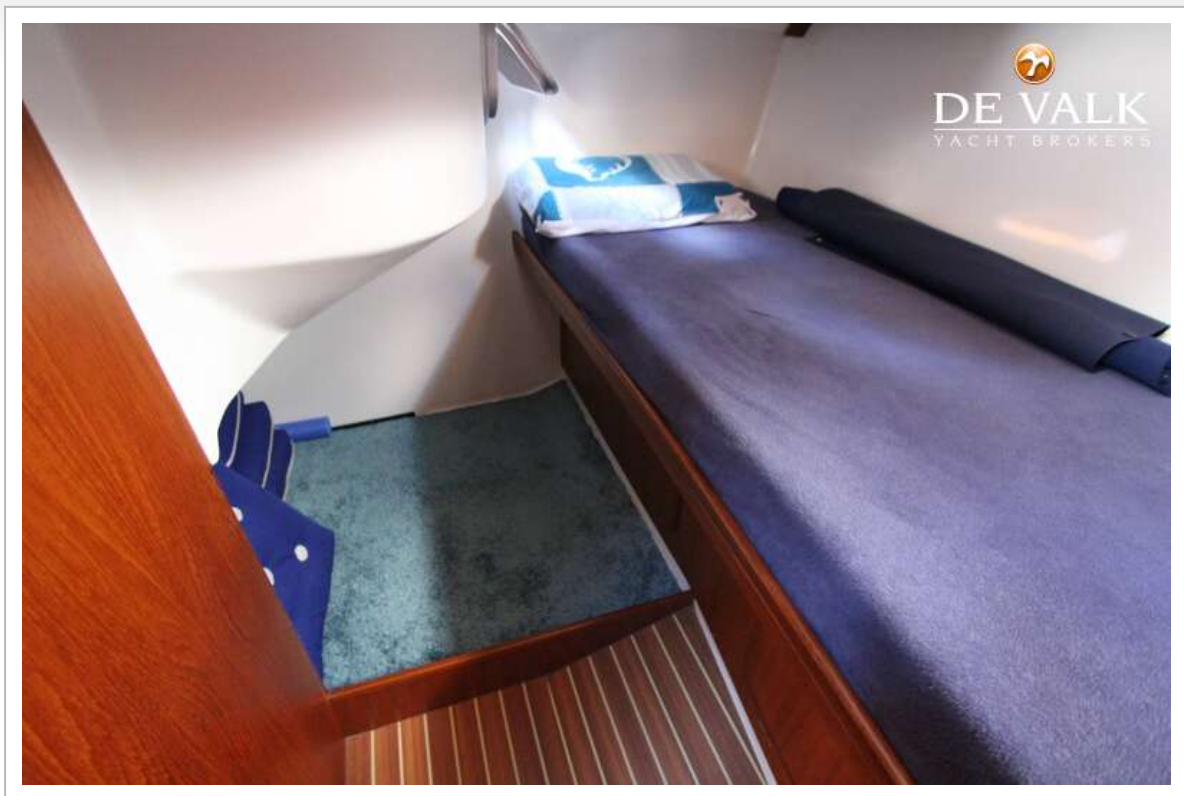


# NIDELV 33 CLASSIC





# NIDELV 33 CLASSIC

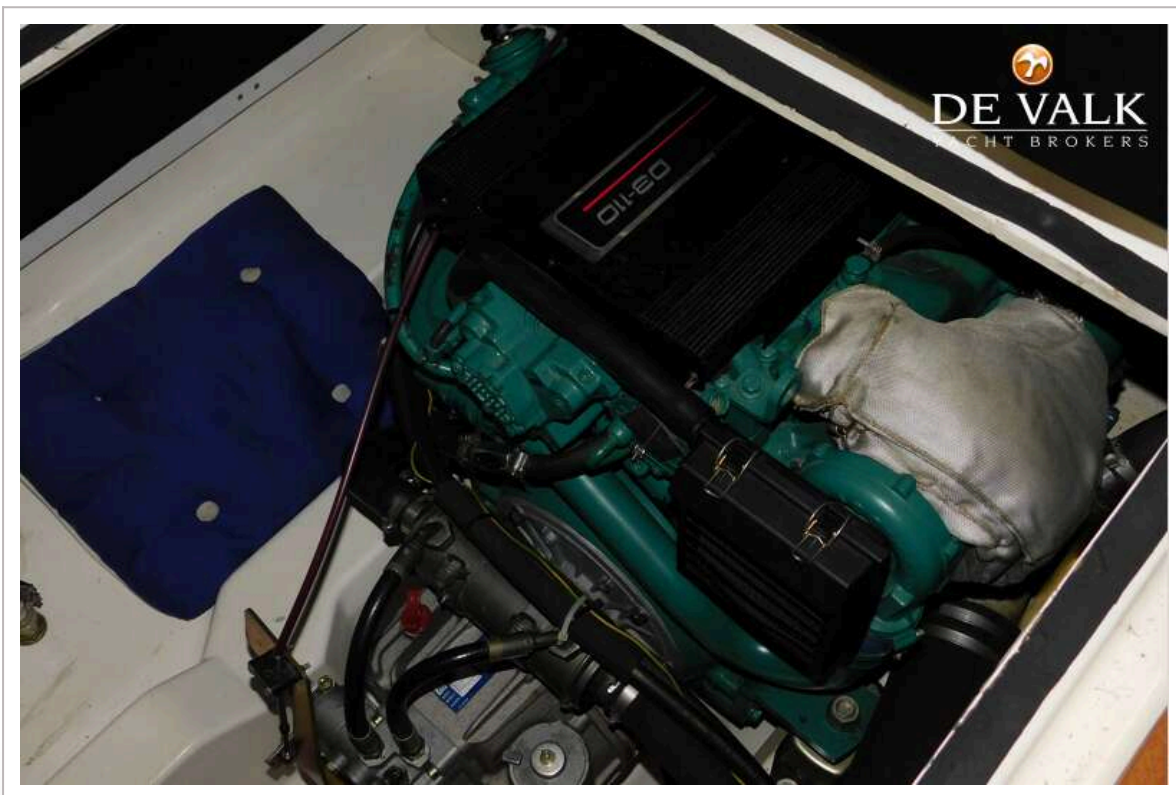


# NIDELV 33 CLASSIC





# NIDELV 33 CLASSIC



# NIDELV 33 CLASSIC

