



ATHENA 44



BROKER'S COMMENTS

The Athena 44 is a late ORC style cruising yacht. She offers fine sailing abilities as well as roomy interior with 4 cabins plus a separate marinero cabin. This yacht has been in long term private ownership. As her hull has received an expensive anti osmosis treatment in 2012, it is now better than new. Very recommended for some one looking for a lots of boat at a reasonable price. Located northern Germany.

Jürgen Jacobs

SPECIFICATIONS

Dimensions	13.40 x 4.20 x 1.95 (m)	Builder	Dromor Yachts
Built	1994	Cabins	5
Material	GRP	Berths	9
Engine(s)	1 x Volvo Penta MD22L diesel	Hp/Kw	50.00 (hp), 36.80 (kw)
Asking price	€ 59.800 (VAT Paid)	Lying	contact Hamburg

CONTACT

Sales office	De Valk Hamburg	Telephone	+49 40 46 000 999
Address	Domstraße 11 20095 Hamburg DE	E-mail	hamburg@devalk.nl

DISCLAIMER

These particulars are given in good faith as supplied but cannot be guaranteed.



GENERAL

Model	ATHENA 44
Type	sailing yacht
LOA (m)	13,40
Beam (m)	4,20
Draft (m)	1,95
Air draft (m)	19,00
Headroom (m)	1,95
Year built	1994
Builder	Dromor Yachts
Country	Greece
Designer	Iannis Trantafillopoulos
Displacement (t)	8,9
Ballast (tonnes)	lead 3
Hull material	GRP
Hull colour	white
Keel type	fin keel
Superstructure material	GRP
Rubbing strake	Teak /w stainless steel
Deck material	GRP
Deck finish	teak
Cockpit deck finish	teak
Antifouling (year)	2024
Deckhatch	To mariner cabin
Fuel tank (litre)	240
Level indicator (fuel tank)	yes
Freshwater tank (litre)	500
Blackwater tank (litre)	120
Blackwater tank extraction	yes
Wheel steering	yes
More info on hull	Anti Osmosis treatment by Peter Wrede YachtRefit in 2012



ACCOMMODATION

Cabins	5
Berths	9
Crew cabin	1 marinero Cabin in bow section, access from deck
Interior	teak
Floor	teak and holly
Saloon	yes
Headroom saloon (m)	195cm
Heating	diesel ducted hot air Eberspächer D3L
Chart table	yes
Countertop	stainless steel
Sink	stainless steel
Cooker	calor gas
Oven	yes
Fridge	yes
Hot water system	220V + engine
Water pressure system	yes
Owners cabin	double bed
Bed length (m)	2m
Bathroom	separate
Toilet	separate
Toilet system	electric
Wash basin	in the cabin
Shower	separate
Guest cabin 1	double bed
Bed length (m)	2m
Bathroom	yes
Toilet	separate
Toilet system	manual
Wash basin	in the cabin
Shower	yes



Guest cabin 2	twin single
Guest cabin 3	twin single
Crew cabin(s)	1 crew cabin in bow section, access from deck
Toilet (crew)	yes
Toilet system	manual

MACHINERY

No of engines	1
Make	Volvo Penta
Type	MD22L
HP	50
kW	36.80
Fuel	diesel
Engine cooling system	freshwater heat exchanger
Drive	shaft
Propeller type	reversible 3 bladed
Propeller shaft material	stainless steel
Manual bilge pump	yes
Electric bilge pump	yes
Electrical installation	12V
Start battery	1 x 120Ah
Service battery	2 x 120Ah
Battery charger	yes
Shorepower	with cable

NAVIGATION

Compass	yes
Multi control display	Raymarine ST60 Tridata Depth, Speed, Temperature
Depth sounder	yes
Depth sounder/log	In Raymarine ST60 Tridata
Windset	Raymarine ST60 Wind



VHF	Outdated Shipmate
Radar	Furuno 1725
Plotter/GPS	Garmin 73
Navigation lights	yes
Searchlight	yes

EQUIPMENT

Sprayhood	yes
Winter cover	For standing rigg
Cockpit cushions	yes
Cockpit table	yes
Deck shower	yes
Anchor	Delta 20kg, S/S
Anchor chain	50m
Anchor 2	Folding Draggen, 15kg
Sea railing	yes
Pushpit	yes
Pulpit	yes
Life raft (pers)	container 8
Horn	yes
Fenders	yes
Mooring lines	yes
TV	yes
Radio-cd player	yes
Cockpit speakers	yes
Speakers in salon	yes
Fire extinguisher	yes

RIGGING

Rigging	sloop
Standing rigging	wire



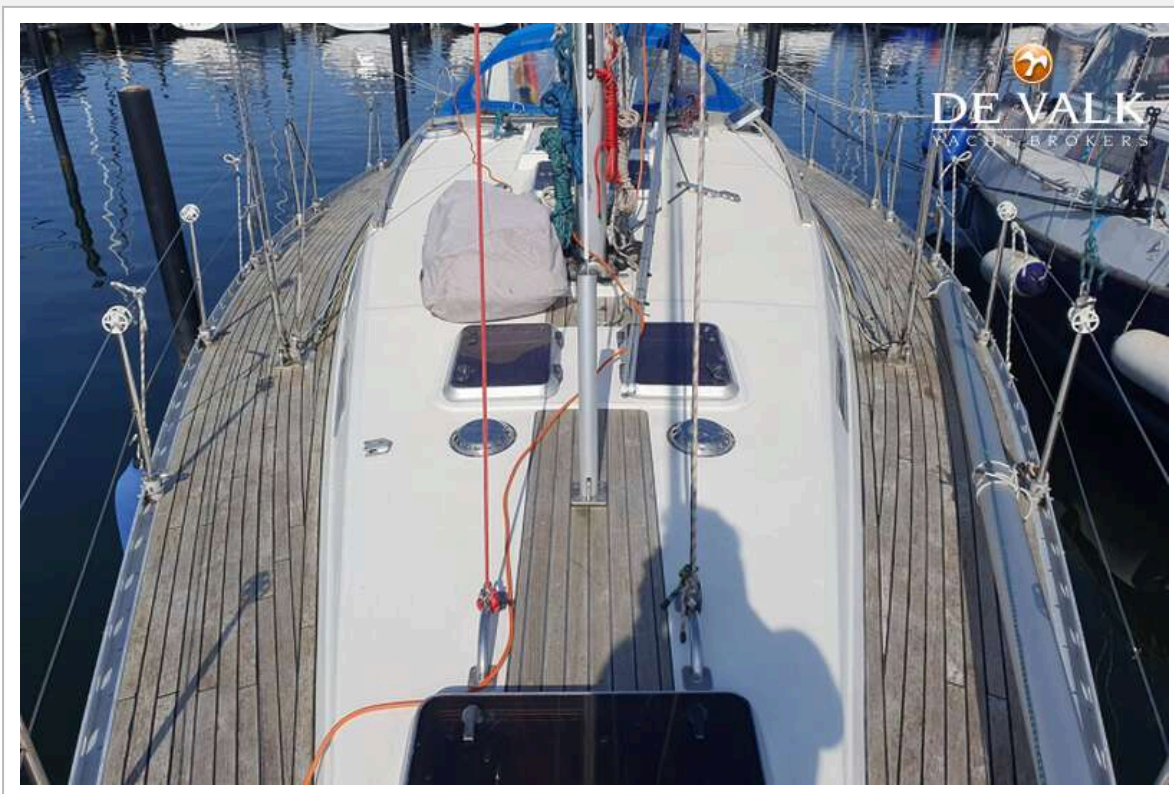
Material mast	aluminium
Mainsail	yes
Mainsail cover	Lazy Bag
Battcars	yes
Fully battened mainsail	yes
Jib I	95%
Genoa I	+ UV protection
Genoa furler	yes
Halyard winches	yes
Spinnaker winch	yes
Reefing winch	yes
Spi-pole	yes



ATHENA 44



ATHENA 44



ATHENA 44



ATHENA 44



ATHENA 44





ATHENA 44



ATHENA 44





ATHENA 44



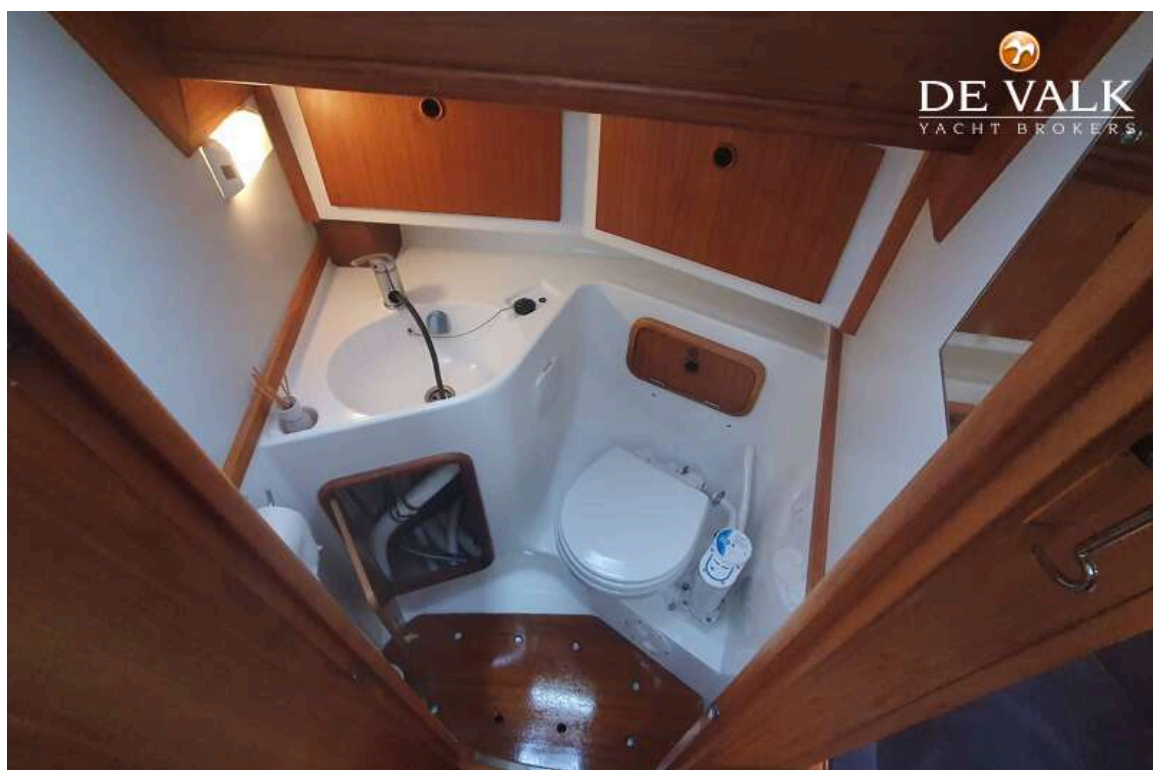
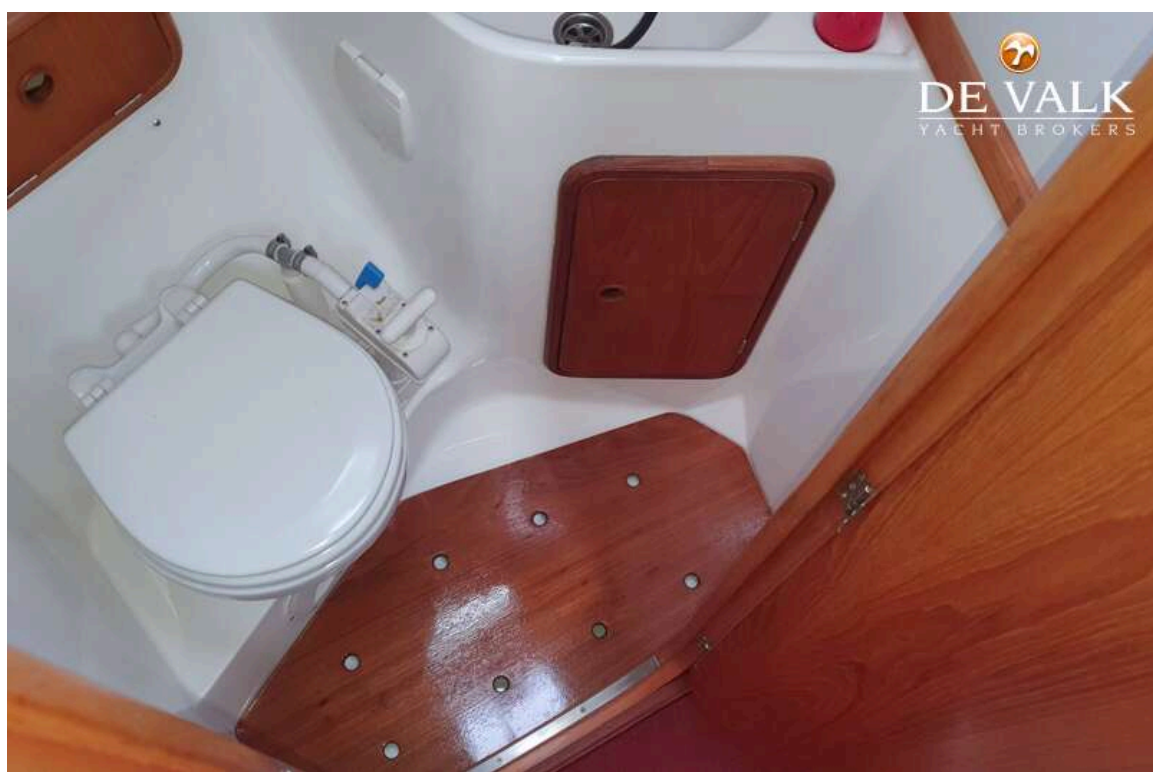
ATHENA 44



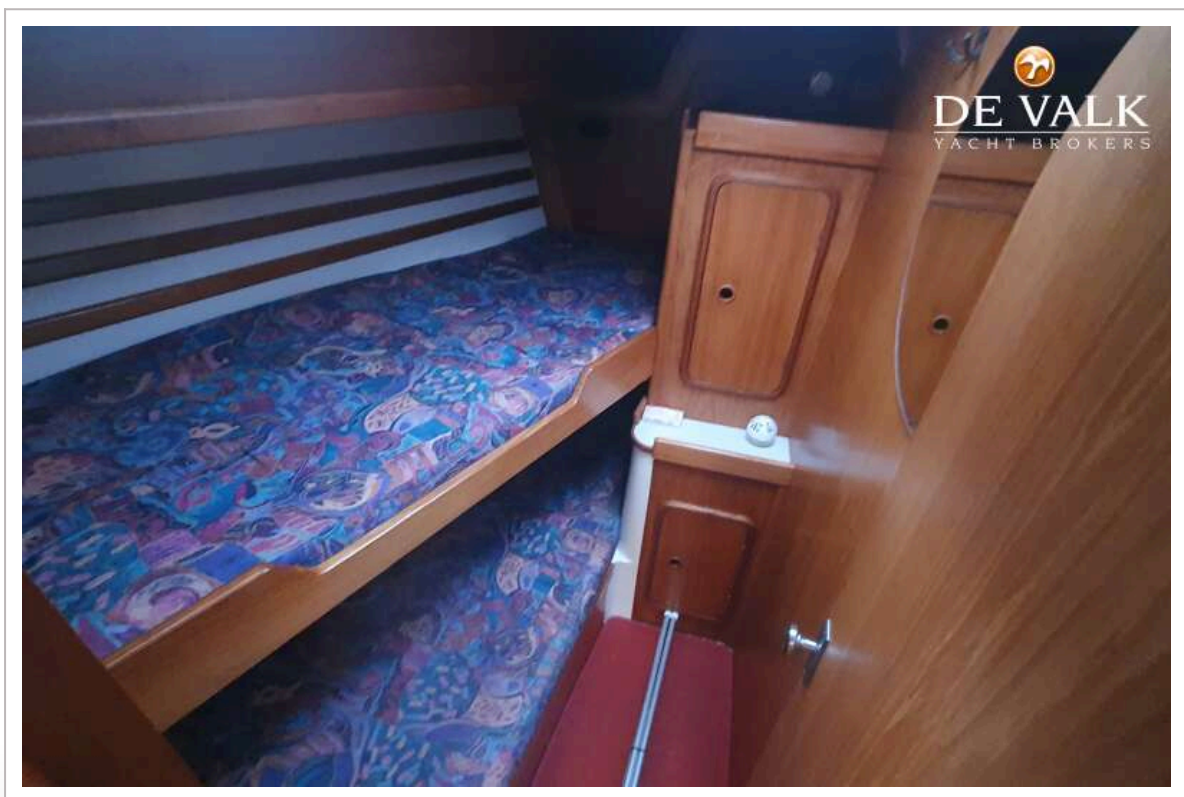
ATHENA 44



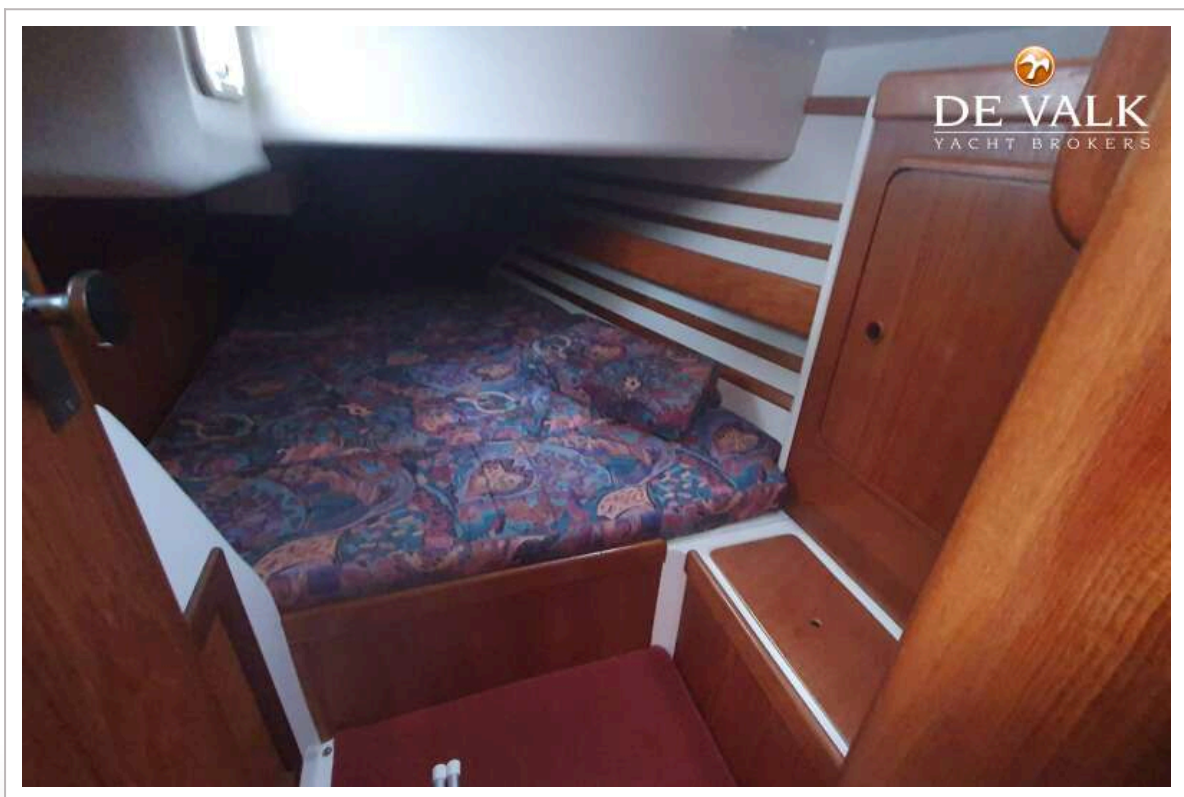
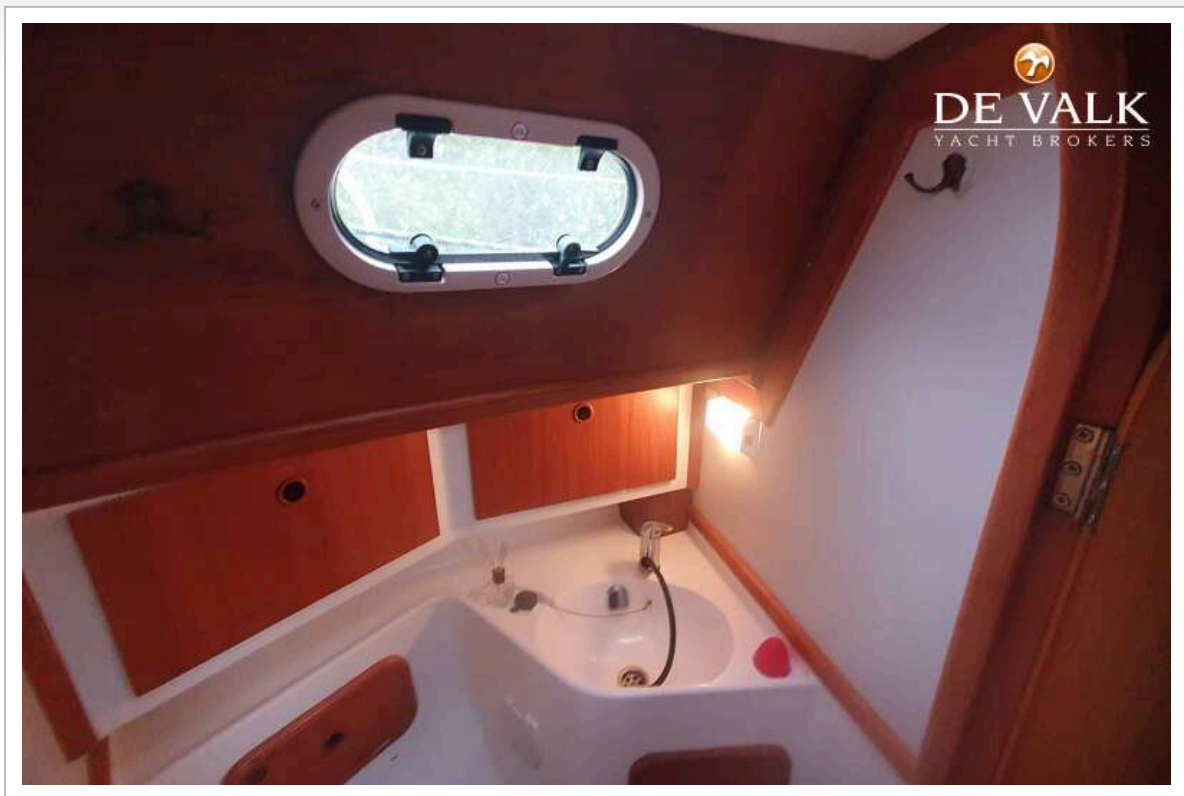
ATHENA 44

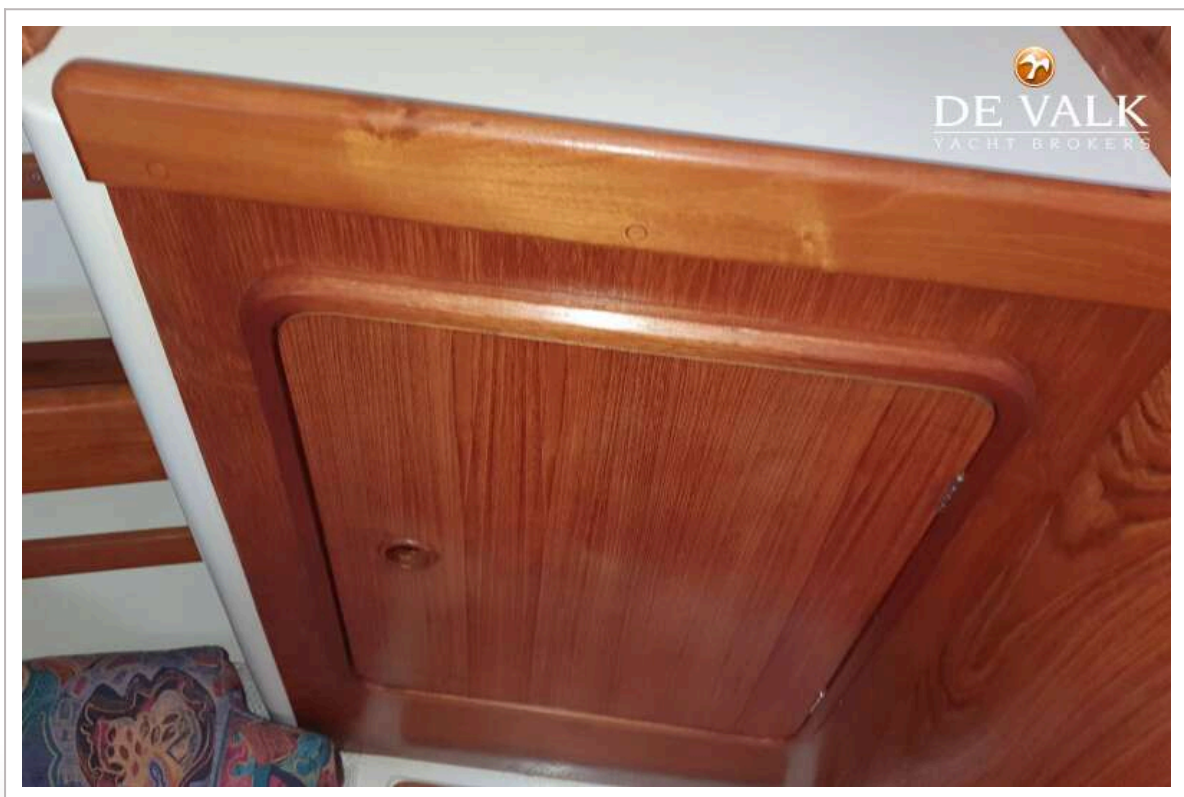
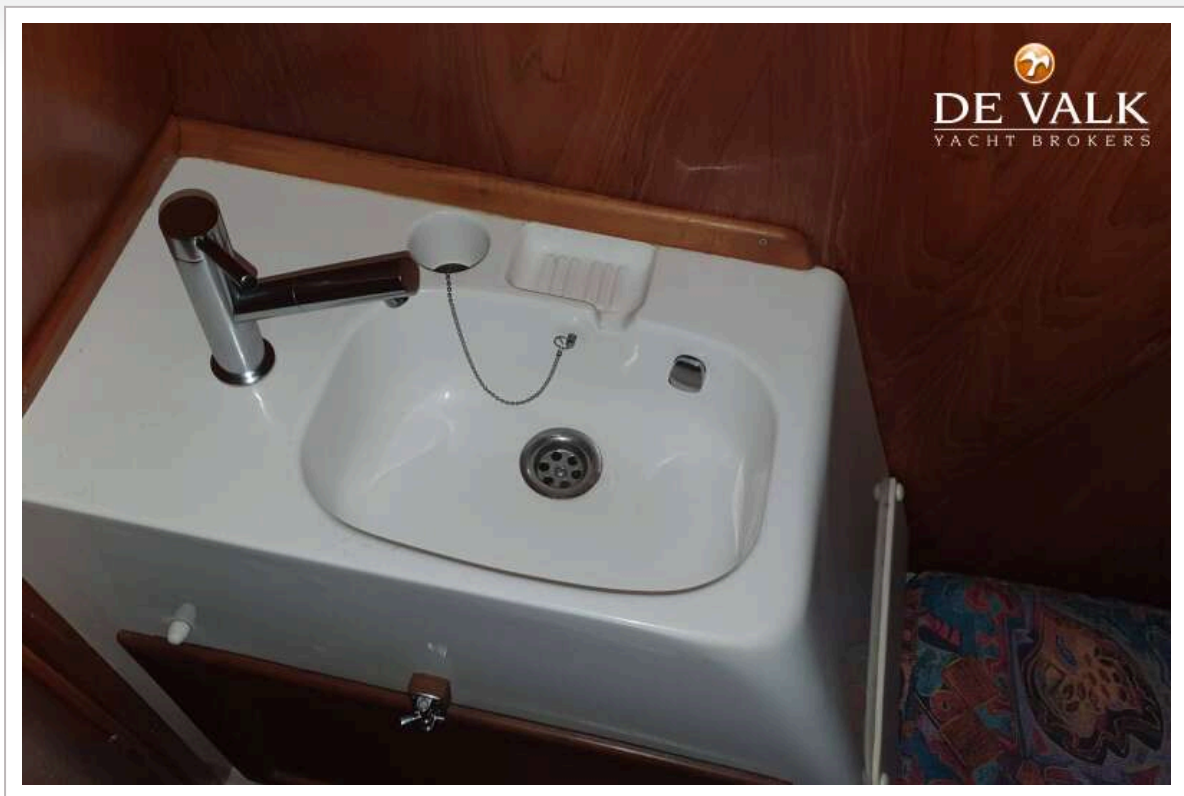


ATHENA 44



ATHENA 44





ATHENA 44

