



LAGOON 42

BROKER'S COMMENTS

The Lagoon 42 "Free Spirit" is a hardly used catamaran that is as good as new and she stands out for both her condition and equipment, she has never chartered and has almost zero hours on the engines. The lagoon 42 "Free Spirit" is ready for immediate sailing but you will need to install the cockpit dodger as the brand new cover has not even been installed yet. The lagoon 42 "Free Spirit" comes electric winches, watermaker, solar panels, Litiumlon batteries and many other high end feautres for short handed long distance autonomus sailing. Uniquely located in Northern Europe in Hindeloopen.

Hans Visser

SPECIFICATIONS

Dimensions	12.92 x 7.68 x 1.24 (m)	Builder	Lagoon Bellevue sur Vie France
Built	2023	Cabins	3
Material	GRP	Berths	6
Engine(s)	2 x Yanmar 4JH57 diesel	Hp/Kw	2 x 57.00 (hp), 41.95 (kw)
Asking price	€ 449.000 (VAT Not paid)	Lying	at sales office

CONTACT

Sales office	De Valk Hindeloopen B.V.	Telephone	+31 514 52 40 00
Address	Oosterstrand 1 8713 JS Hindeloopen NL	E-mail	hindeloopen@devalk.nl

DISCLAIMER

These particulars are given in good faith as supplied but cannot be guaranteed.



GENERAL

Model	LAGOON 42
Type	catamaran sailing yacht
LOA (m)	12,92
Beam (m)	7,68
Draft (m)	1,24
Air draft (m)	20,60
Headroom (m)	2,05
Year built	2023
Launched	September 2023
Builder	Lagoon Bellevue sur Vie France
Country	France
Designer	Peteghem & Lauriot-prevost / NautaDesign
Displacement (t)	12,1
Gross tonnage	27
Net tonnage	8
CE norm	A
Hull material	GRP
Hull colour	white
Hull shape	V-shaped hull
Keel type	fin keel 2 x
Superstructure material	GRP
Deck material	GRP
Deck finish	non-skid moulded in
Superstructure deck finish	non-skid moulded in
Cockpit deck finish	synthetic teak Flexiteak
Antifouling (year)	2024
Window frame	polymer
Window material	glass
Deckhatch	10x Lewmar
Portholes	6x



Flybridge	yes
Fuel tank (litre)	GRP 285
Fuel tank 2 (litre)	285
Level indicator (fuel tank)	yes
Freshwater tank (litre)	GRP 300
Level indicator (freshwater)	yes
Blackwater tank (litre)	GRP 2x 80
Level indicator (blackwater)	yes
Blackwater tank extraction	deck extraction + pump
Wheel steering	hydraulic Starboard with pushrod and cable for port rudder
Flybridge helm position	chain steering
Emergency tiller	2x

ACCOMMODATION

Cabins	3
Berths	6
Interior	Vinyl
Floor	wood
Headroom saloon (m)	2,05 mtr.
Heating	diesel ducted hot air Vevor CY-7 12v 8Kw heating power
Chart table	yes
Sliding door to cockpit	yes
Galley	yes
Countertop	Duropol
Sink	stainless steel
Cooker	induction 4 burner Pelgrim
Fridge	Isotherm CR130CT
Freezer	Vitrigo BN100BT-DE ousite Vitrigo freezer
Hot water system	220V + engine Quick 40 ltr. 1200 W
Water pressure system	electrical
Dishwasher	Bosch silence plus



Owners cabin	double bed
Bed length (m)	2,00x1,74 mtr.
Wardrobe	hanging/drawers/shelves
Bathroom	separate
Toilet	separate
Toilet system	electric
Wash basin	in the bathroom
Shower	separate
Guest cabin 1	double bed
Bed length (m)	2,00x1,74 mtr.
Wardrobe	hanging/drawers/shelves
Bathroom	shared
Toilet	separate
Toilet system	electric
Wash basin	at the toilet
Shower	shared
Guest cabin 2	French bed
Bed length (m)	2,00x1,45 mtr.
Wardrobe	hanging/drawers/shelves
Toilet	separate
Toilet system	electric
Wash basin	at the toilet
Washing machine/dryer combi	AEG 7000 series prosteam

MACHINERY

No of engines	2
Make	Yanmar
Type	4JH57
HP	57
kW	41.95
Fuel	diesel



Maximum speed (kn)	9
Cruising speed (kn)	6
Engine hours	132
Engine cooling system	freshwater heat exchanger
Drive	sail-drive
Engine controls	bowden cable
Gearbox	mechanical
Gearbox	mechanical
Exhaust	watercooled
Propeller type	fixed
Propeller blades	3 blade
Manual bilge pump	yes
Electric bilge pump	yes
Electrical installation	12V-230V
Batteries	4
Start battery	Exide Marine Leisure AGM 12V 140Ah AGM 50 Ah 12v
Service battery	2x Victron LiFePO4 Lithium accu 12V/330Ah
Battery monitor	Victron
Battery charger	Victron Phoenix smart charger 12V 50 A 2x Victron SmartSolar mpp150 70
Inverter	2x Victron isolated Orion-Tr 12/12-30A (360W)
Battery charger/inverter	Victron MultiPLus 12V 3000W 120A
Solar panel	4x Jinko JKM440n
Shorepower	with cable
Insulation transformer	Victron Transformator 7000W 230V
Watermaker	SeaWater Pro Dual Membrane

NAVIGATION

Compass	Plastimo
Multi control display	Data on: Raymarine I70
VHF	Raymarine



Autopilot	Raymarine p70s
Radar	Raymarine quantum 2
Plotter/GPS	Axiom 16 Pro S
AIS transceiver	Raymarine
Navigation lights	yes

EQUIPMENT

Fixed hardtop	For the cockpit, softtop for the helm
Cockpit cushions	yes
Cockpit table	yes
Cockpit chairs	yes
Boarding ladder	stainless steel
Deck shower	yes
Anchor	yes
Windlass	electrical
Davits	yes
Sea railing	wire
Railing side opening gates	yes
Pushpit	yes
Pulpit	yes
Fenders	yes
Mooring lines	yes
TV	Samsung
Radio	Fusion MS-RA70N
Cockpit speakers	yes
Speakers in salon	yes

RIGGING

Rigging	sloop
Standing rigging	wire
Material mast	aluminium



Spreaders	1 set
Mainsail	Elvstrøm
Mainsail cover	Lazy bag Elvstrøm
Battcars	yes
Genoa	Elvstrøm
Multifunctional winches	Harken 48 Electric self tailing Harken 46 2 speed self tailin
Extra info	I = 15,25, J=5,94, P= 15,94, E = 4,86 total approx 84 m2



LAGOON 42



LAGOON 42



LAGOON 42



LAGOON 42



LAGOON 42



LAGOON 42



LAGOON 42



LAGOON 42

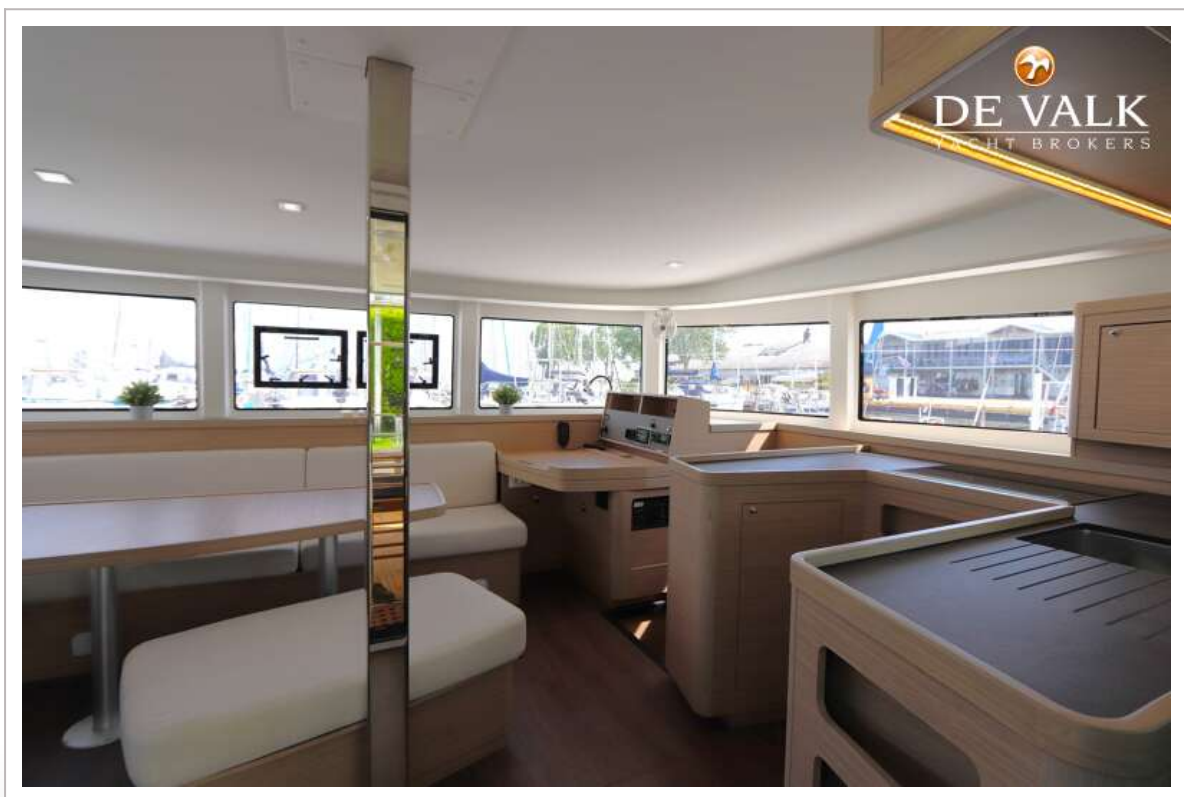




LAGOON 42



LAGOON 42



LAGOON 42

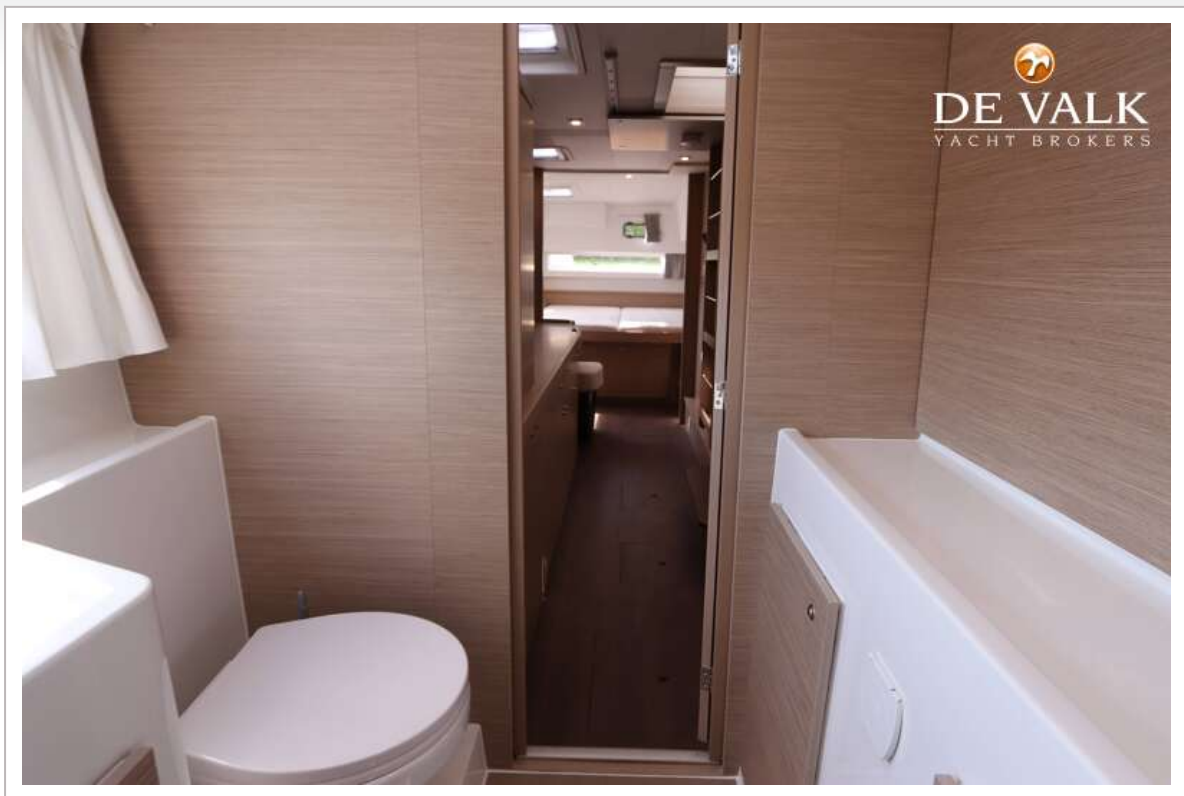


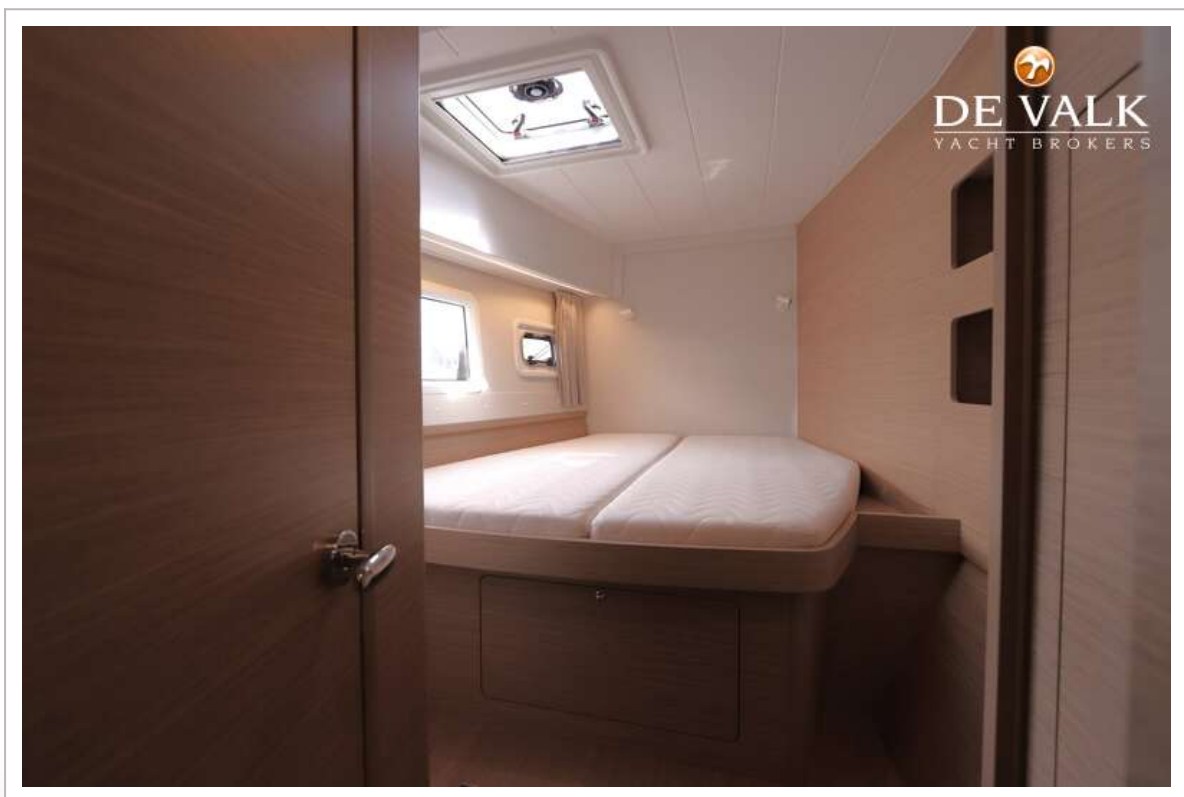
LAGOON 42

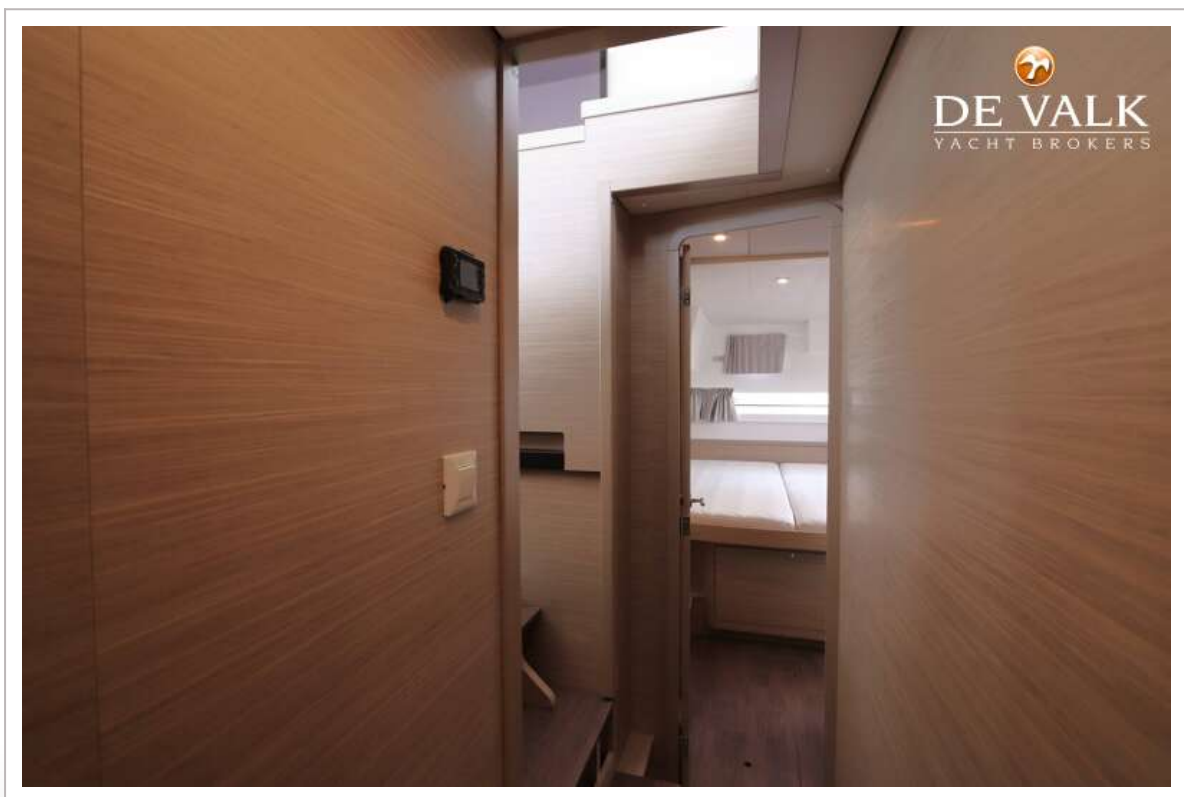
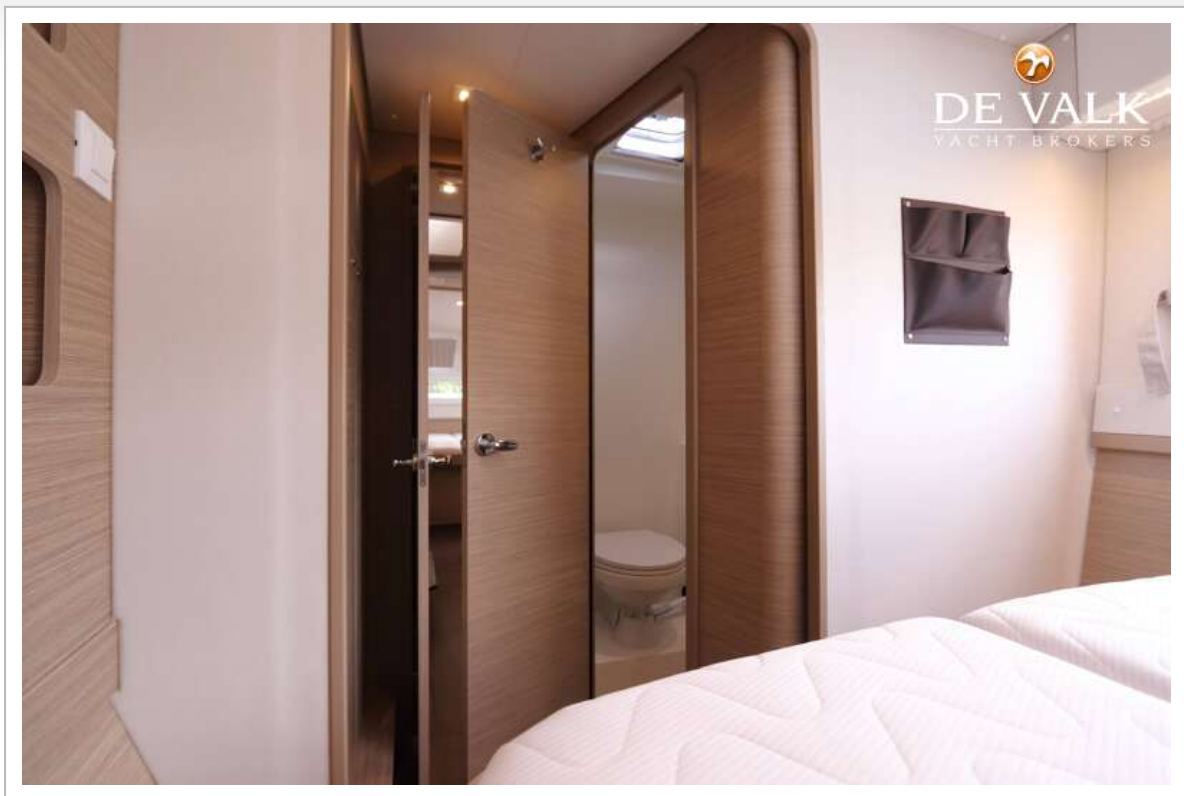


LAGOON 42

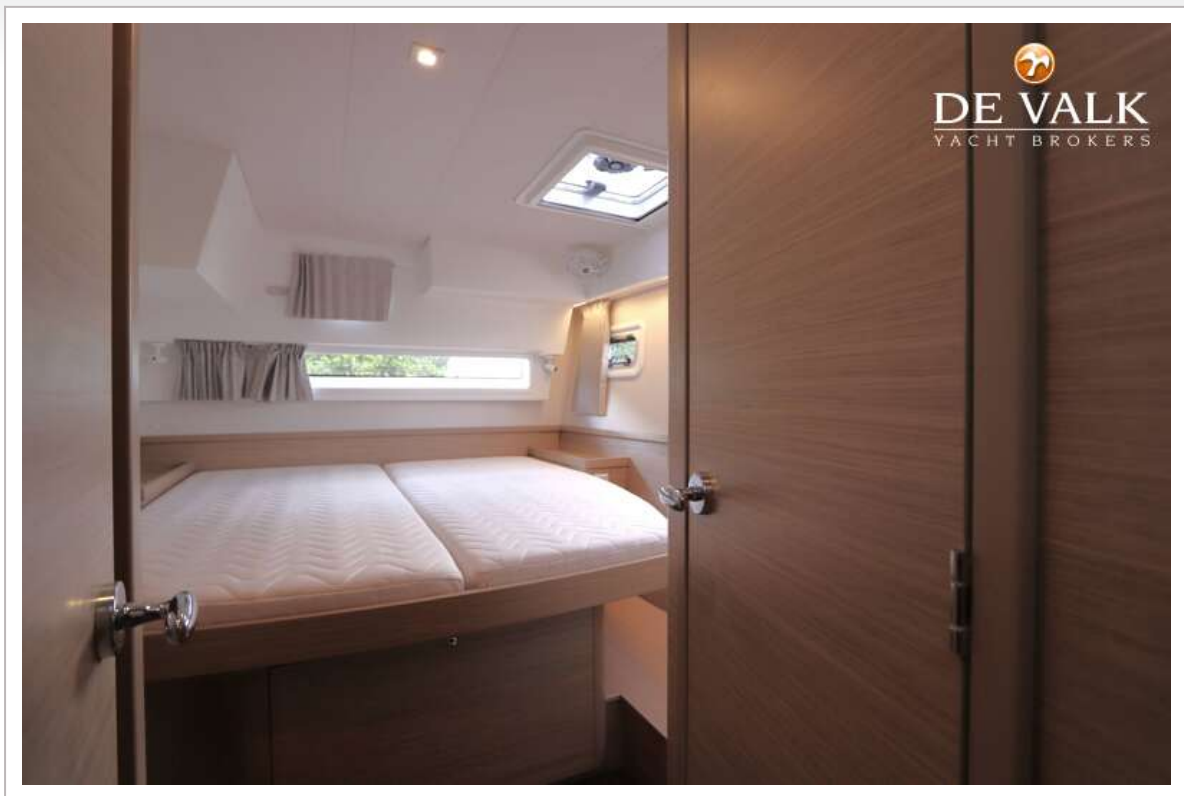




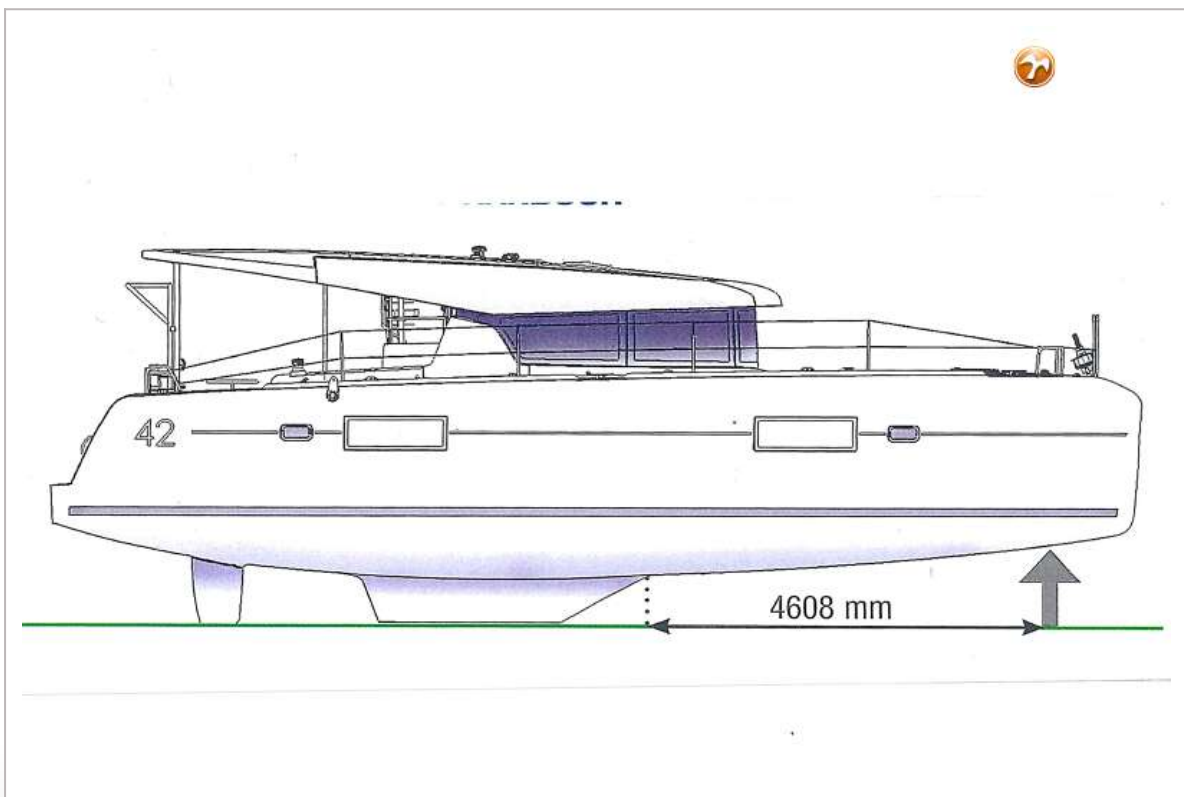


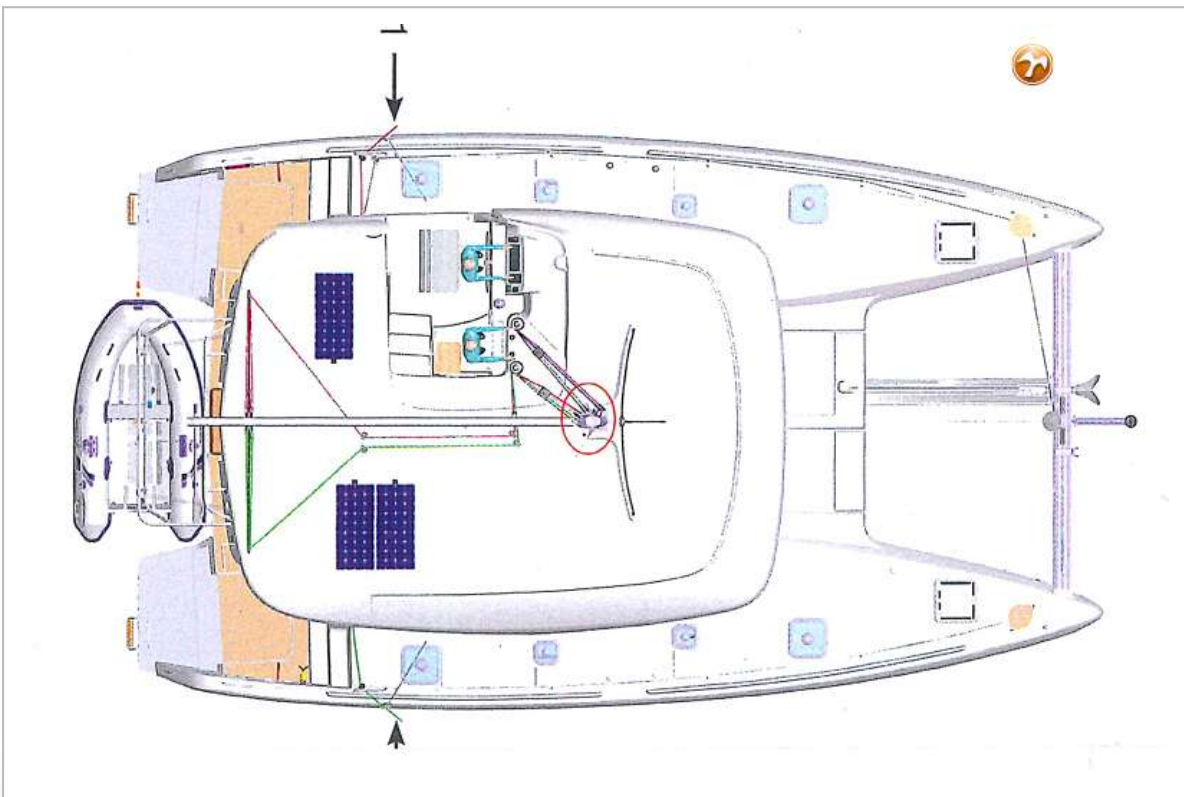
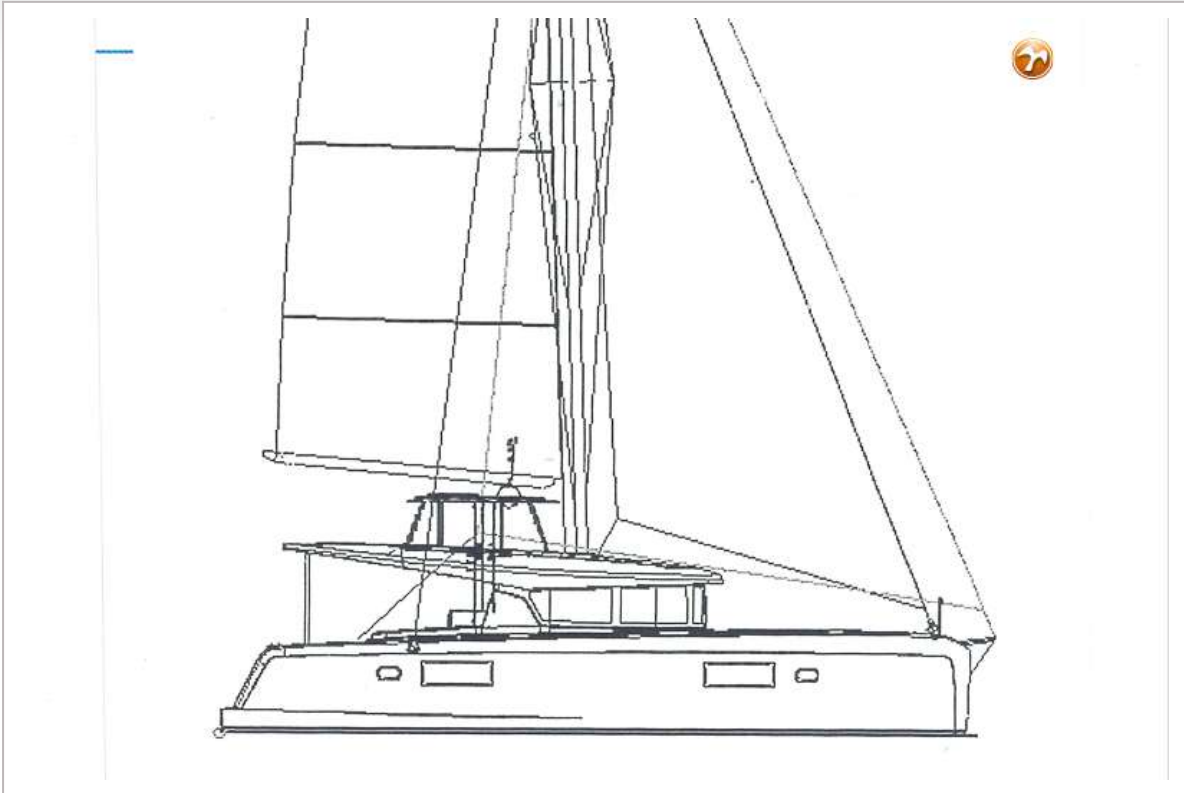


LAGOON 42



LAGOON 42





LAGOON 42

