



GALEON 380 FLY



DE VALK
YACHT BROKERS

GALEON 380 FLY

BROKER'S COMMENTS

Galeon 380 flybridge motor yacht for sale, built in 2005. Yacht is equipped with twin Volvo Penta engines with a total of 520 horse power. Spacious salon for the size of this vessel. Layout with owners stateroom at the bow. Guest cabin at starboard side. Very cozy cockpit.

Mark Hesselmans

SPECIFICATIONS

Dimensions	11.49 x 3.73 x 0.72 (m)	Builder	Galeon
Built	2005	Cabins	2
Material	GRP	Berths	4
Engine(s)	2 x Volvo Penta D4 - 260 diesel	Hp/Kw	2 x 260.00 (hp), 191.36 (kw)
Asking price	€ 149.000 (VAT Paid)	Lying	at sales office

CONTACT

Sales office	De Valk Loosdrecht	Telephone	+31 35 582 90 30
Address	't Breukeleveense Meentje 6 1231 LM Loosdrecht / Wijdmeren The Netherlands	E-mail	loosdrecht@devalk.nl

DISCLAIMER

These particulars are given in good faith as supplied but cannot be guaranteed.



GENERAL

Model	GALEON 380 FLY
Type	motor yacht
LOA (m)	11,49
Beam (m)	3,73
Draft (m)	0,72
Year built	2005
Builder	Galeon
Country	Poland
CE norm	B
Hull material	GRP
Hull colour	white
Hull shape	deep-V
Superstructure material	GRP
Rubbing strake	rubber
Deck material	GRP
Deck finish	teak
Superstructure deck finish	non-skid moulded in
Cockpit deck finish	teak
Window material	tempered glass
Deckhatch	yes
Portholes	stainless steel 4x
Flybridge	yes
Radar arch	non collapsible
Fuel tank (litre)	1000 L
Level indicator (fuel tank)	yes
Freshwater tank (litre)	500 L
Level indicator (freshwater)	yes
Wheel steering	hydraulic
Inside helm position	yes
Flybridge helm position	hydraulic



ACCOMMODATION

Cabins	2
Berths	4
Interior	cherry
Floor	carpet
Aft deck	yes
Air-conditioning	reverse cycle airco
Dinette	yes
Sliding door to cockpit	yes
Galley	yes
Countertop	corian
Sink	yes
Microwave	Dometic reverse cycle / CHc20s250/1407c
Fridge	Isotherm
Hot water system	220V + engine
Water pressure system	electrical
Owners cabin	yes
Guest cabin 1	yes

MACHINERY

No of engines	2
Make	Volvo Penta
Type	D4 - 260
HP	260
kW	191.36
Fuel	diesel
Maximum speed (kn)	32
Cruising speed (kn)	22
Engine cooling system	freshwater heat exchanger
Drive	stern
Engine controls	electrical



Gearbox	hydraulic
Bowthruster	electric Sidepower
Exhaust	watercooled
Propeller type	fixed
Electric bilge pump	yes
Electrical installation	12v / 24v / 230v
Batteries	12V-185Ah 1000A
Shorepower	with cable
Trimtabs	yes

NAVIGATION

Compass	Plastimo
Compass on flybridge	yes
Depth sounder/log	ST60 Raymarine
VHF	Handset - Ray 240E
Autopilot	Raymarine
Rudder angle indicator	Volvo
GPS	yes
Plotter	Raymarine
Navigation lights	yes

EQUIPMENT

Fixed windscreen	yes
Bimini	yes
Cockpit cushions	yes
Cockpit chairs	yes
Bathing platform	yes
Boarding ladder	yes
Transom door	yes
Gangway	yes
Anchor	yes



GALEON 380 FLY

Windlass	electrical
Sea railing	stainless steel
Wiper	yes
Fenders	yes
Mooring lines	yes
TV	Philips
TV receiver	Televen - RSD - 7118
Cockpit speakers	yes
Speakers in salon	yes
Speakers in cabin	yes



GALEON 380 FLY



GALEON 380 FLY



GALEON 380 FLY



GALEON 380 FLY



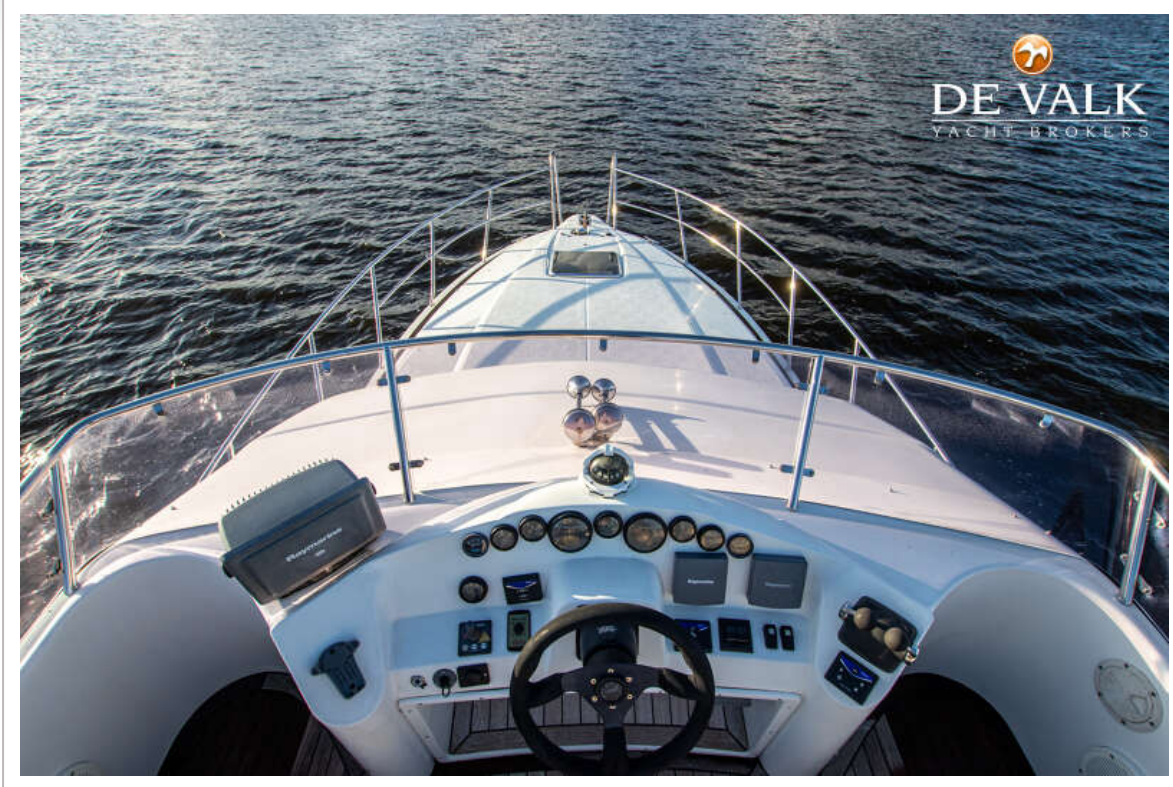
GALEON 380 FLY



GALEON 380 FLY



GALEON 380 FLY



GALEON 380 FLY



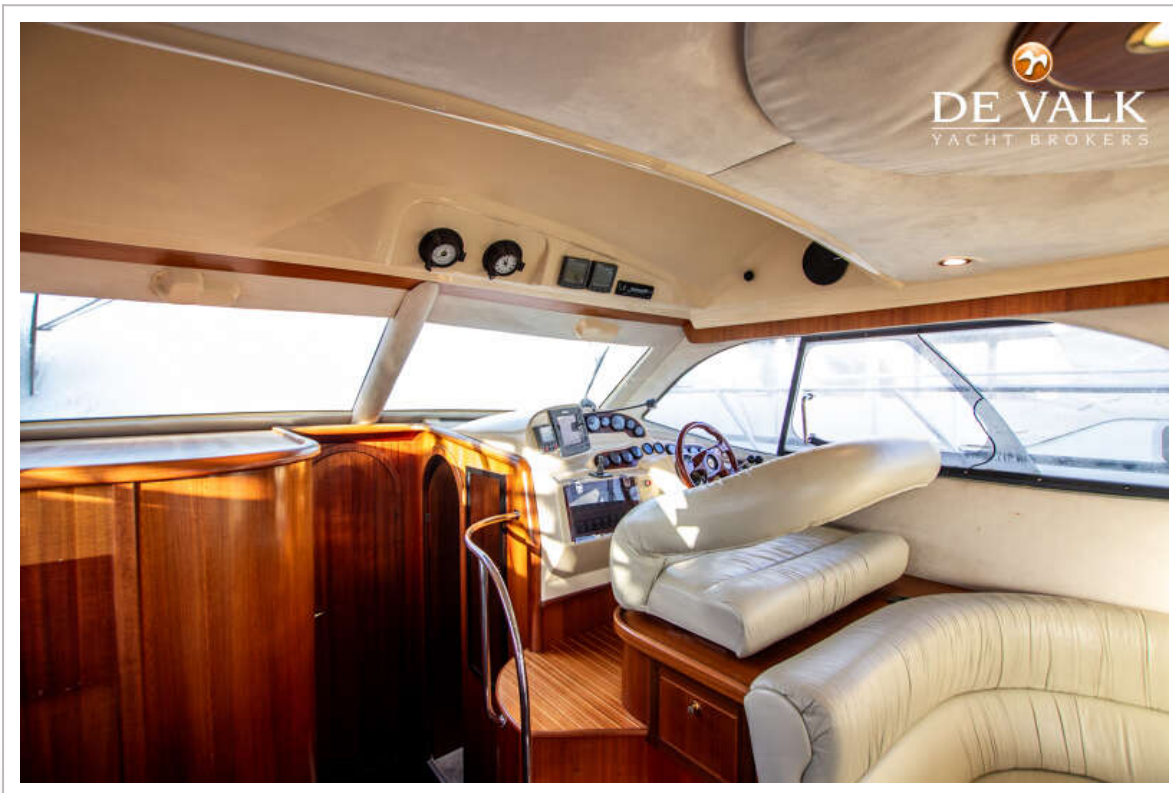
GALEON 380 FLY



GALEON 380 FLY



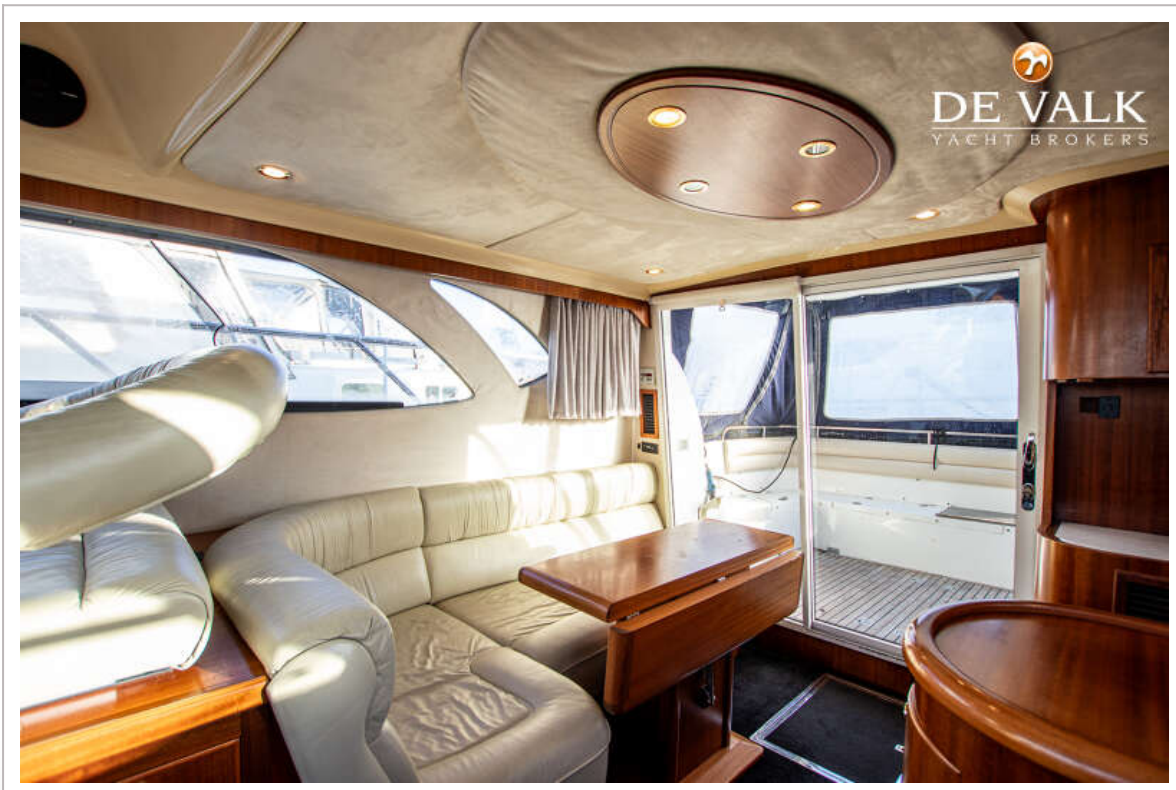
GALEON 380 FLY



GALEON 380 FLY



GALEON 380 FLY



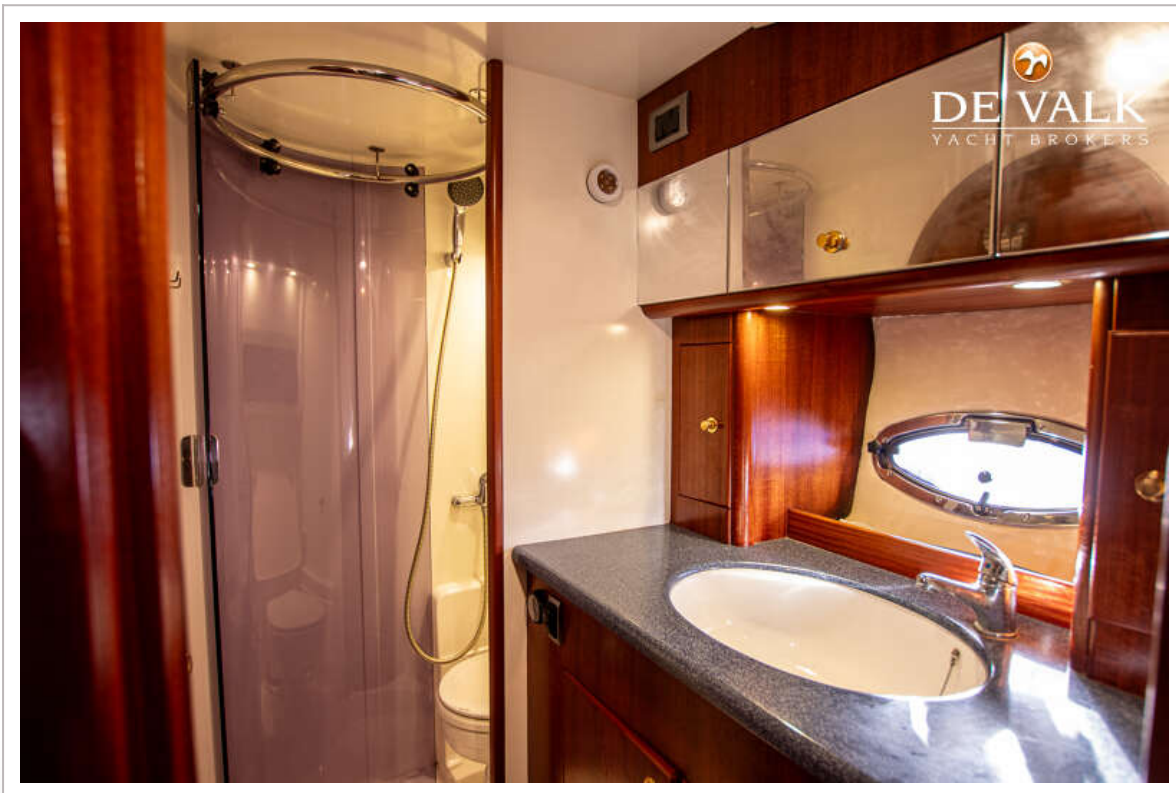
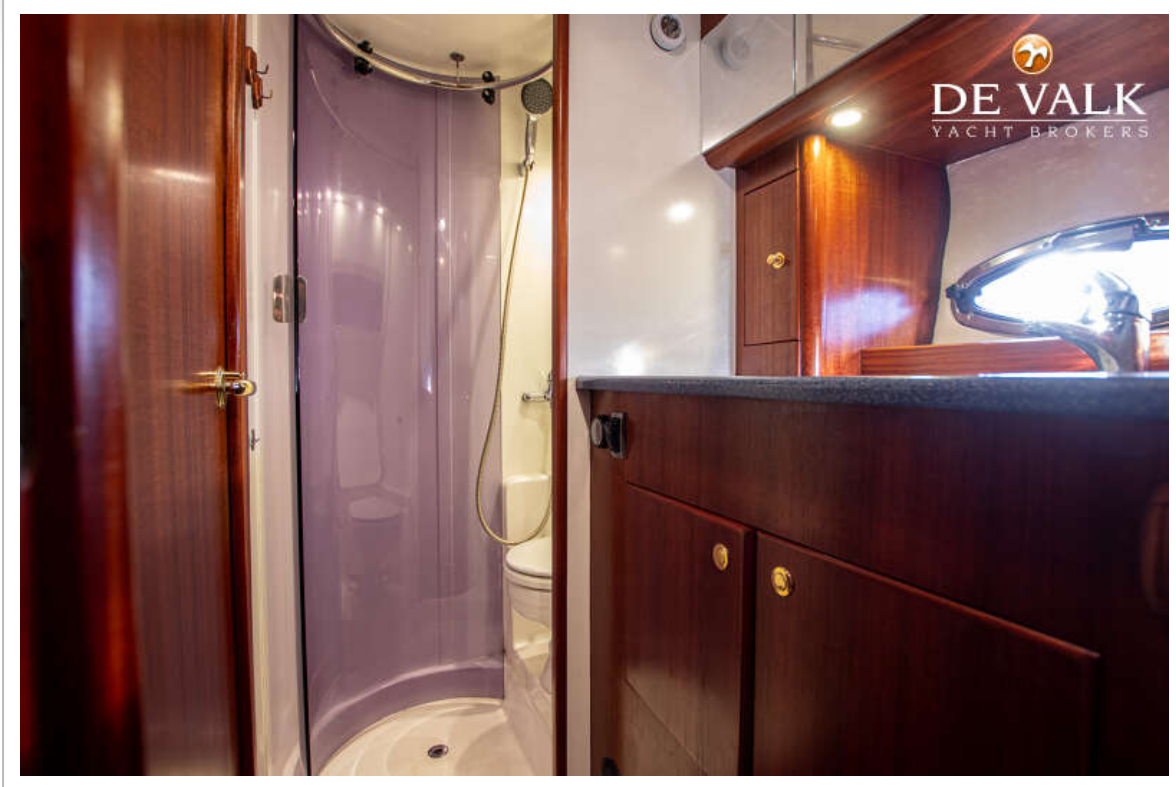
GALEON 380 FLY



GALEON 380 FLY



GALEON 380 FLY



GALEON 380 FLY



GALEON 380 FLY



GALEON 380 FLY

