



HANSE 460

BROKER'S COMMENTS

A one of a kind owners yacht, fully equipped Hanse 460 delivered in winter 2023, registered Oct 2024 and never used. This yacht features a spacious 3-cabin owner's layout, complete with a fully outfitted utility room. Perfect for extended cruising. The hard top option with solar panels, lithium battery pack, performance sails, second forestay with a 145% reacher and advanced handling features. Designed for both comfort and speed. It's equipped with a 10kW Fischer Panda 10000i generator and solar panels for extended, off-grid cruising. Ready for immediate handover at ACI Marina Rovinj.

Miha Spendal

SPECIFICATIONS

Dimensions	14.60 x 4.79 x 2.30 (m)	Builder	Hanse Yachts
Built	2023	Cabins	3
Material	GRP	Berths	6
Engine(s)	1 x Yanmar 4JH80 diesel	Hp/Kw	79.00 (hp), 58.14 (kw)
Asking price	€ 495.000 (VAT Not paid)	Lying	elsewhere / Not at sales office

CONTACT

Sales office	De Valk Istria	Telephone	+386 (1) 600 2704
Address	(Marina Izola) Dantejeva Ulica 22 6310 Izola SI	E-mail	istria@devalk.nl

DISCLAIMER

These particulars are given in good faith as supplied but cannot be guaranteed.



GENERAL

Model	HANSE 460
Type	sailing yacht
LOA (m)	14,60
Beam (m)	4,79
Draft (m)	2,30
Air draft (m)	21,90
Year built	2023
Launched	2024
Builder	Hanse Yachts
Country	Germany
Designer	Berret-Racoupeau
Displacement (t)	12,6
CE norm	A
Hull material	GRP
Hull colour	white White
Superstructure material	GRP
Deck finish	non-skid moulded in
Cockpit deck finish	teak
Antifouling (year)	2024
Fuel tank (litre)	stainless steel 210
Level indicator (fuel tank)	yes
Freshwater tank (litre)	polyethylene 450
Level indicator (freshwater)	yes
Blackwater tank (litre)	yes
Wheel steering	yes
Emergency tiller	yes

ACCOMMODATION

Cabins	3
Berths	6



Interior	Canadian Chestnut
Floor	wood Acacia
Sliding roof	manual Openable canvass sliding roof on hard top
Navigation center	yes
Galley	yes
Countertop	corian
Sink	stainless steel
Cooker	calor gas
Oven	Gas
Fridge	In galley and in cockpit
Freezer	yes
Hot water system	220V + engine
Water pressure system	electrical
Dishwasher	yes
Coffee maker	yes
Owners cabin	double bed
Wardrobe	hanging/drawers/shelves
Bathroom	en suite
Toilet	en suite
Toilet system	manual
Shower	en suite
Guest cabin 1	double bed
Wardrobe	hanging and drawers
Bathroom	en suite
Toilet	en suite
Toilet system	manual
Shower	en suite
Guest cabin 2	double bed
Bathroom	shared
Toilet	shared
Toilet system	manual



MACHINERY

No of engines	1
Make	Yanmar
Type	4JH80
HP	79
kW	58.14
Fuel	diesel
Year installed	2023
Engine hours	3
Engine cooling system	freshwater heat exchanger
Drive	sail-drive
Engine controls	electrical
Bowthruster	, 24 V, retractable, incl. battery
Sternthruster	24 V, retractable, incl. battery
Propeller type	folding 3 blade Flex o Fold
Manual bilge pump	yes
Electric bilge pump	yes
Electrical installation	yes
Generator	Fischer panda 10kW
Running hours generator	3
Start battery	1 x 90Ah
Service battery	6x 105 Ah Li-Ion
Bowthruster battery	yes
Sternthruster battery	yes
Battery charger/inverter	12 V / 2600 W - 100 A, incl. AC panel
Solar panel	Integrated in hard top
Shorepower	with cable

NAVIGATION

Compass	yes
Electric compass	yes



Depth sounder	yes
Forw. looking depth sounder	yes
Log	yes
Windset	yes
Repeater	yes
VHF	B&G VHF V60 at chart table, incl. wireless remote handset H60
VHF handheld	Wireless Remote
Autopilot	Triton ² control unit WR10 remote control and Precision 9 compass
Rudder angle indicator	yes
GPS	yes
Plotter	B&G Zeus ³ S 12" chart plotter at helm station, stb and ps
AIS transponder	AIS Class B transponder
Navigation lights	yes

EQUIPMENT

Cockpit cushions	yes
Cockpit table	yes
Bathing platform	yes
Transom door	With electric winch for dinghy
Anchor	Delta 20 kg stainless steel
Anchor chain	100m stainless steel
Chain counter	yes
Windlass	electrical Combined mooring/anchor windlass, 1500W
Dinghy	inflatable
Pushpit	yes
Pulpit	yes
Fenders	yes
Mooring lines	yes
Fire extinguisher	yes
Latest extinguisher survey	2024



Extra info

Spreader lights LED, 4 up for down

Extra info

Underwater LED lights below transom

RIGGING

Rigging

sloop

Standing rigging

wire

Material mast

aluminium

Spreaders

2 sets

Mainsail

In mast furling QUANTUM AC5 performance - full vert. batt, triradial main

Jib

QUANTUM AC5 performance, triradial jib

Genoa

Second forestay with furler for reacher, manual, tracks mounted

Genoa furler

yes

Gennaker

QUANTUM with snuffer

Self tacking jib installation

yes

Reefing System

main in-mast furling

Boomvang

yes

Primary sheet winch

yes

Secondary sheet winch

Lewmar EVO 50



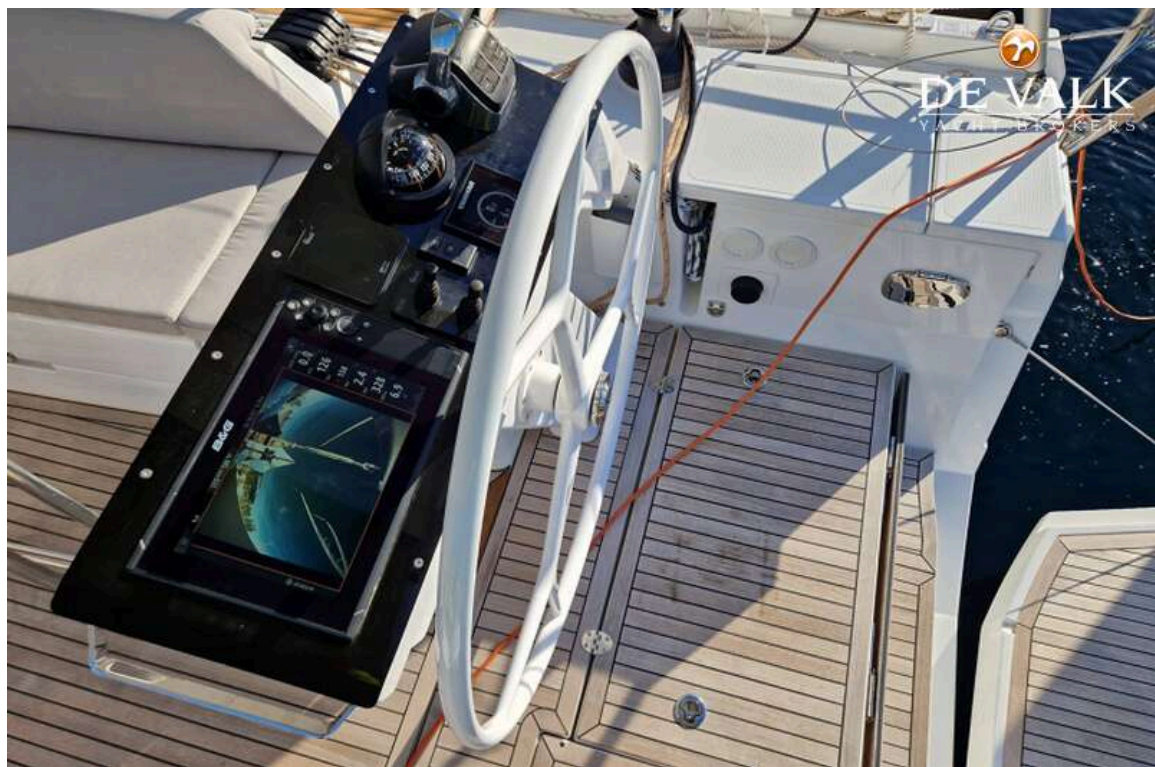
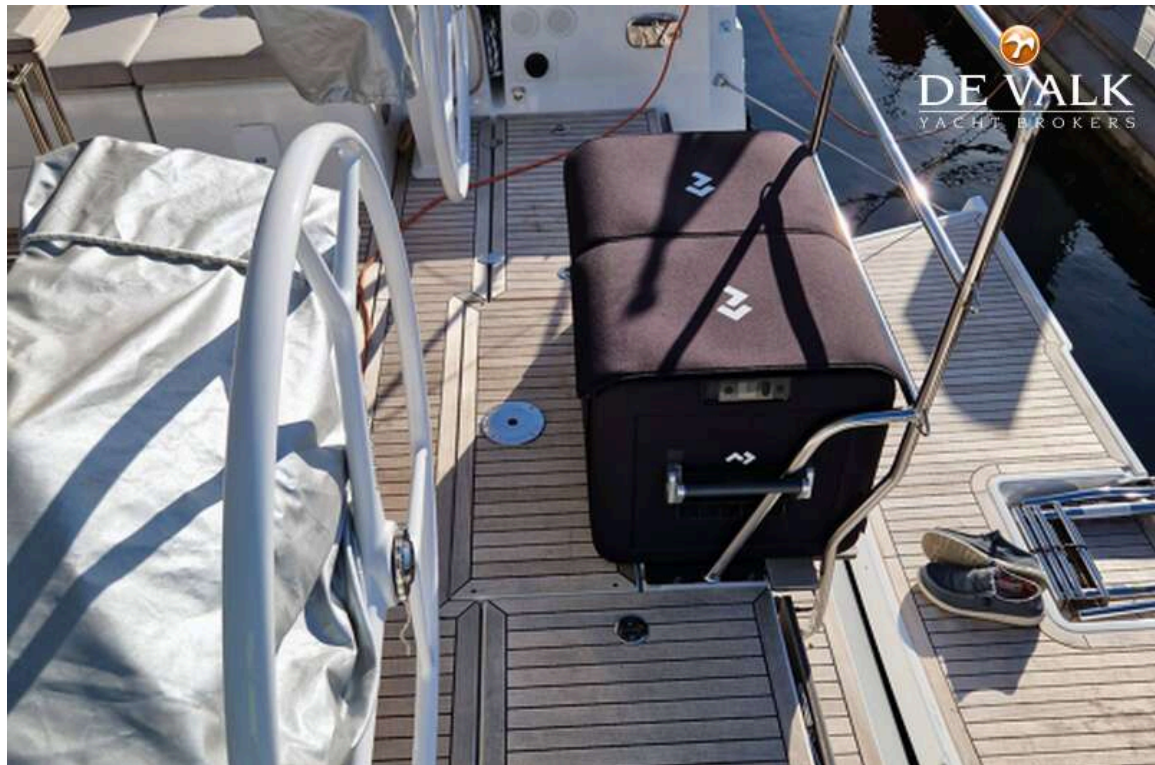
HANSE 460



HANSE 460



HANSE 460



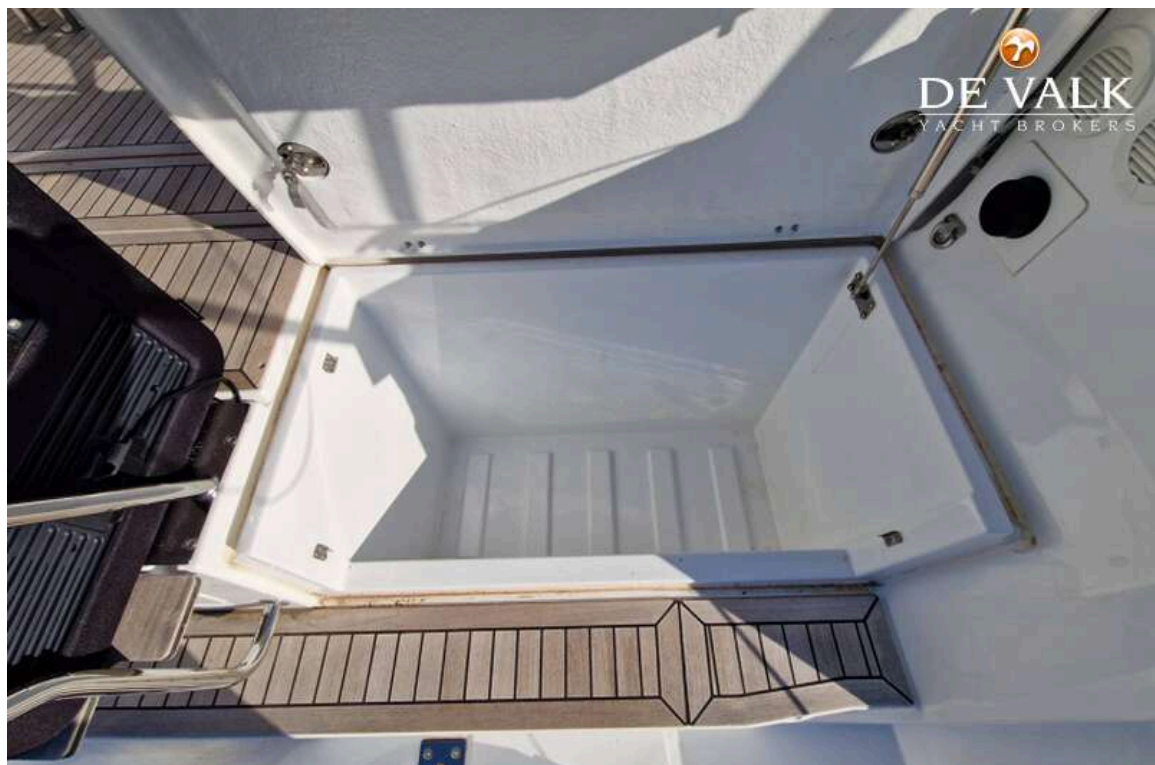
HANSE 460



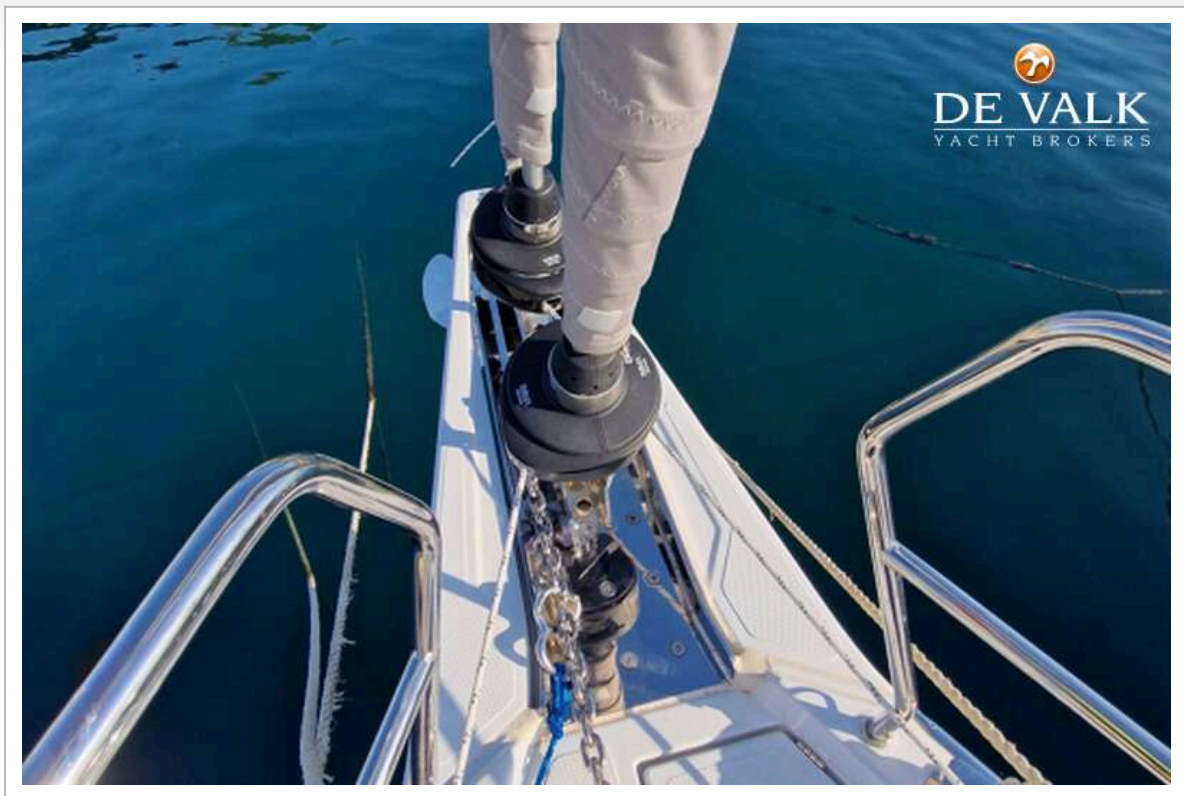
HANSE 460



HANSE 460



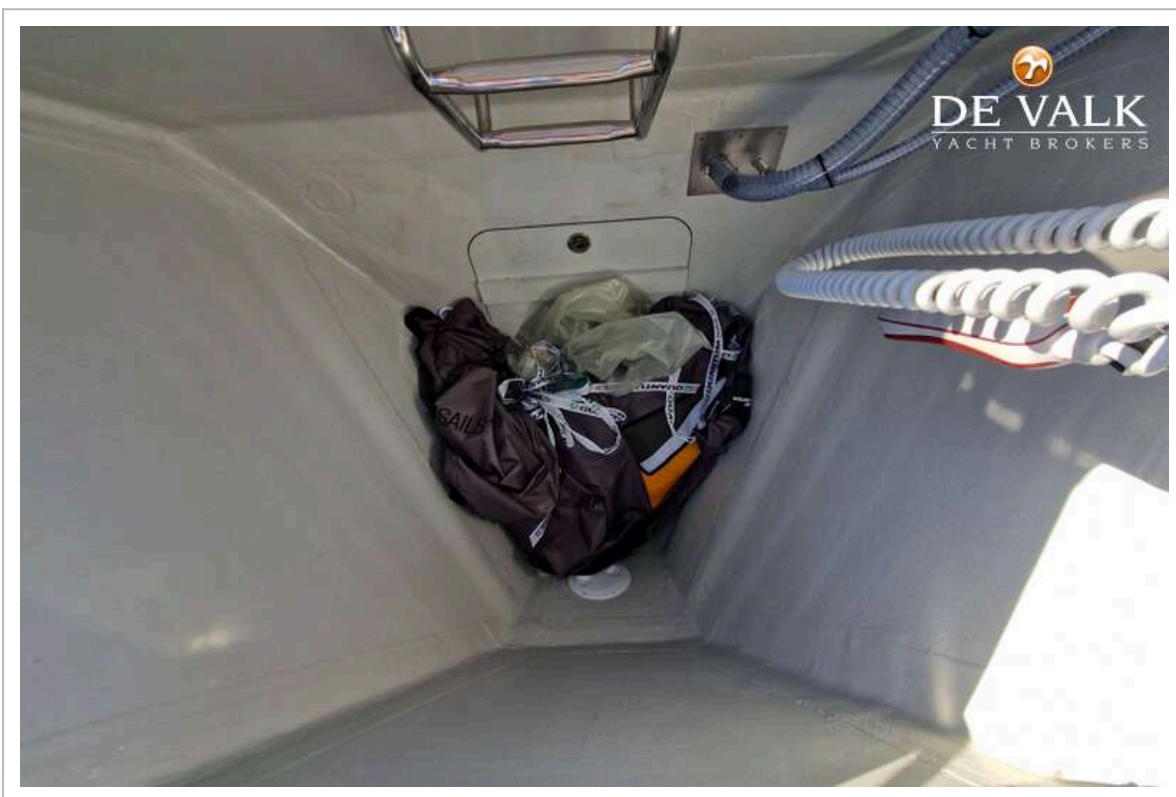
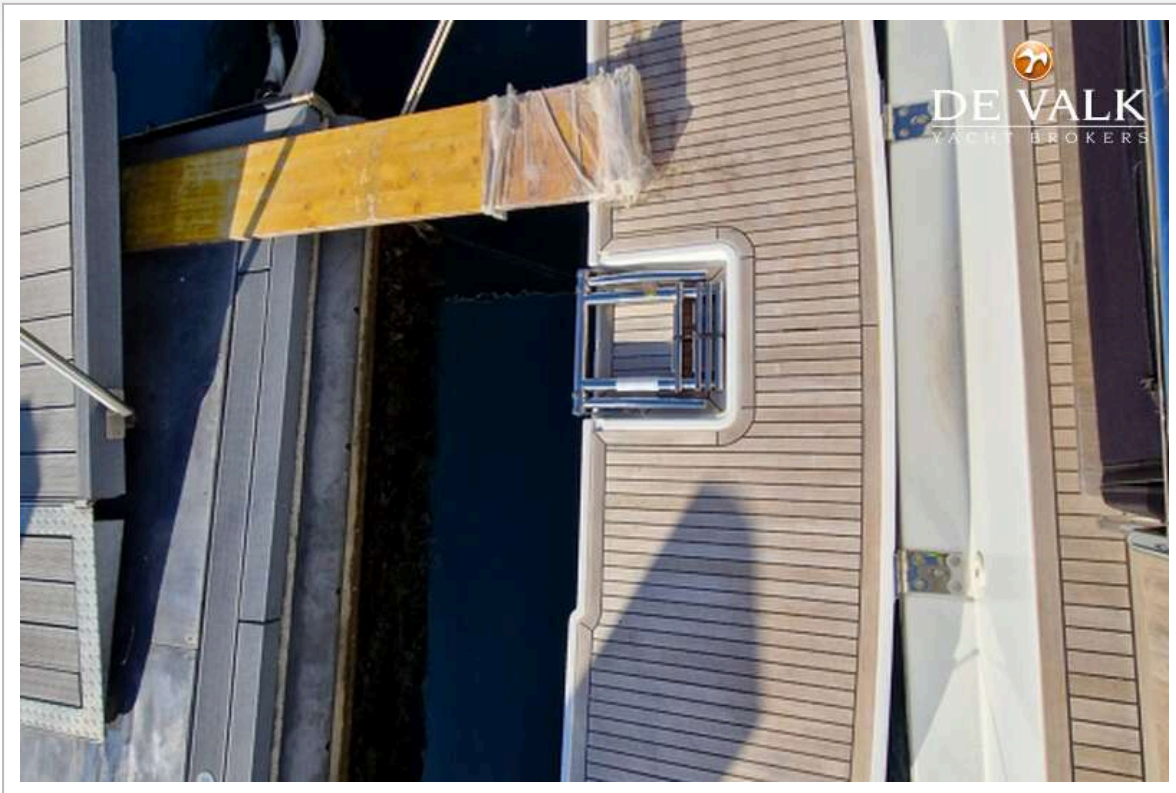
HANSE 460

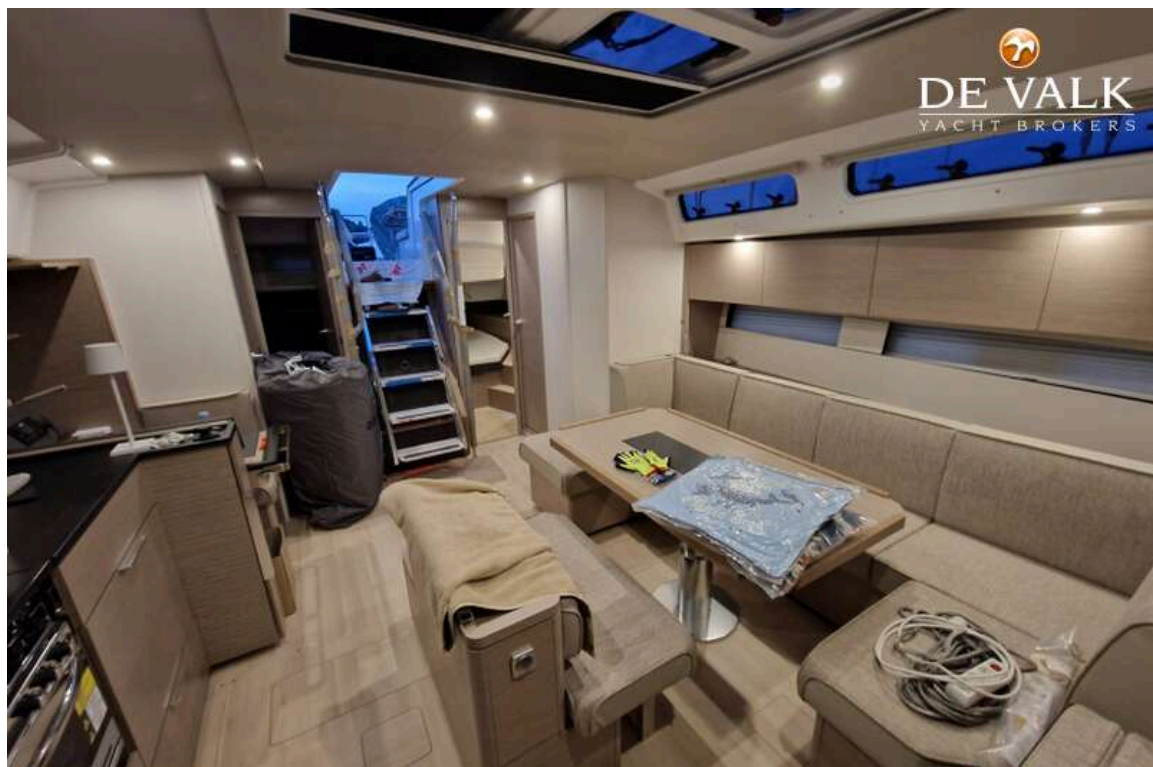


HANSE 460



HANSE 460

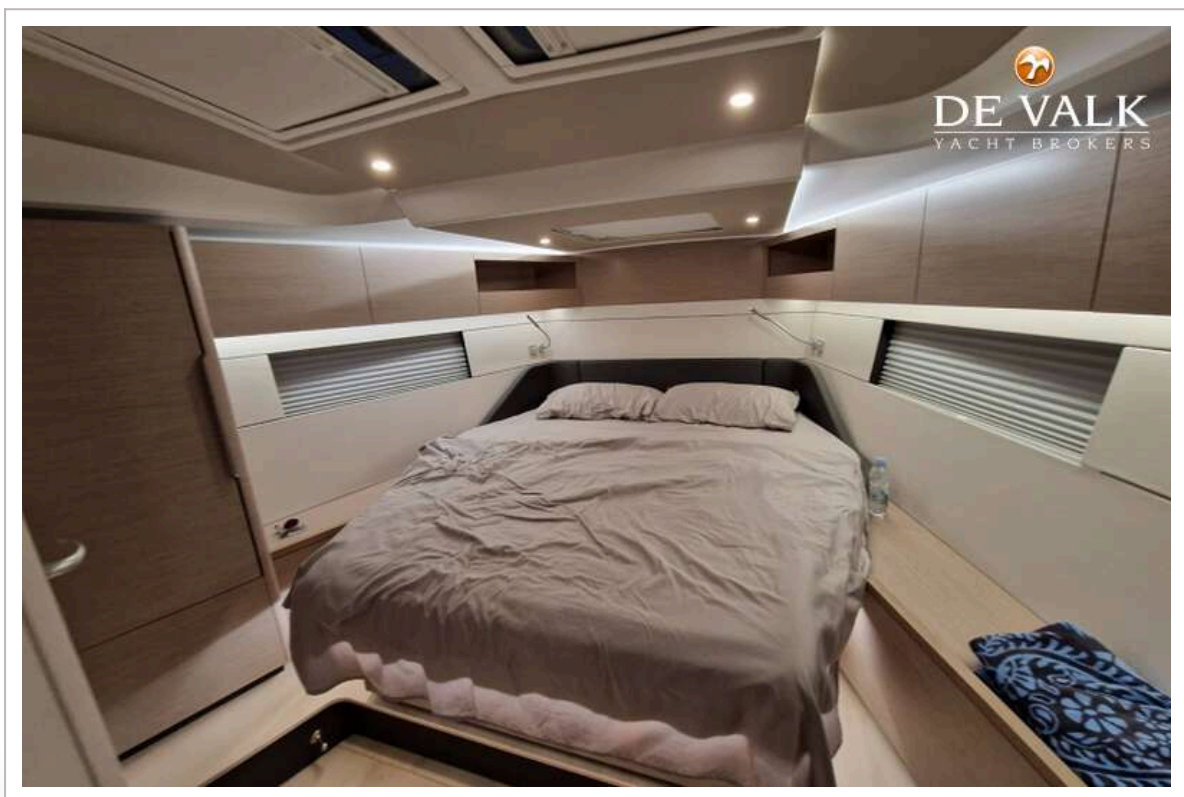
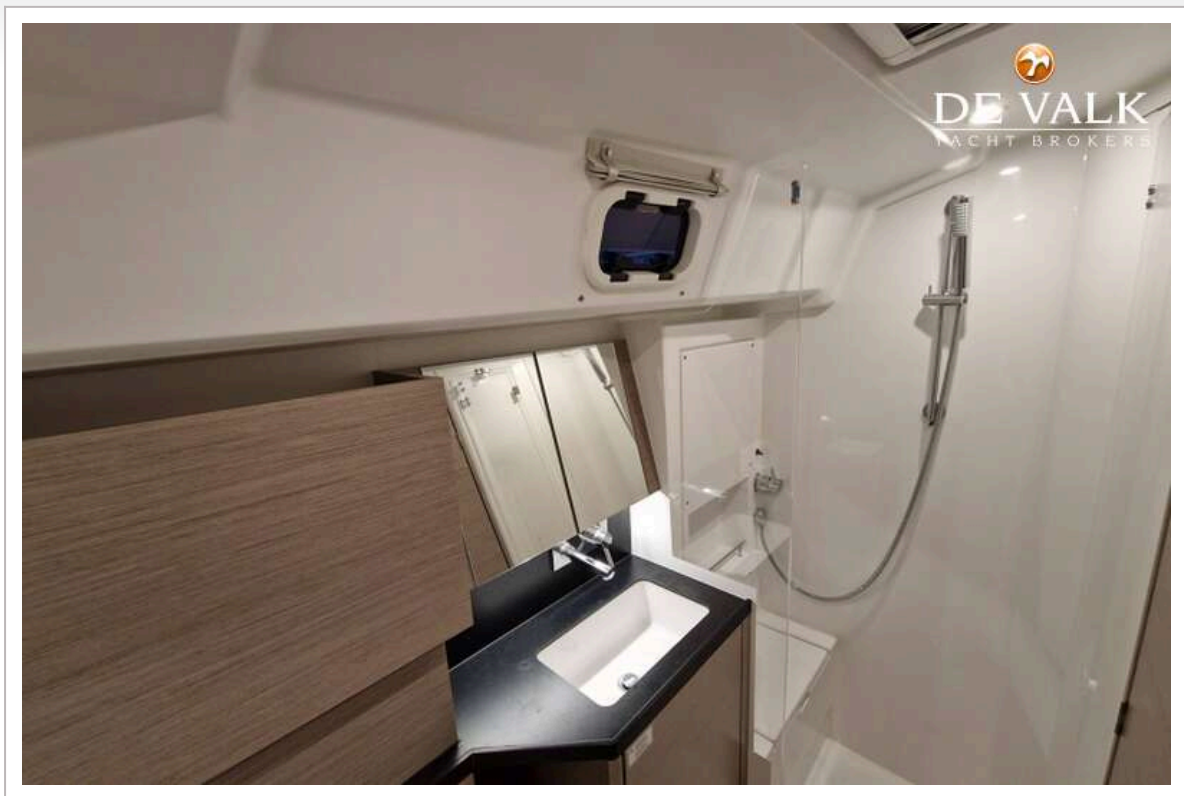


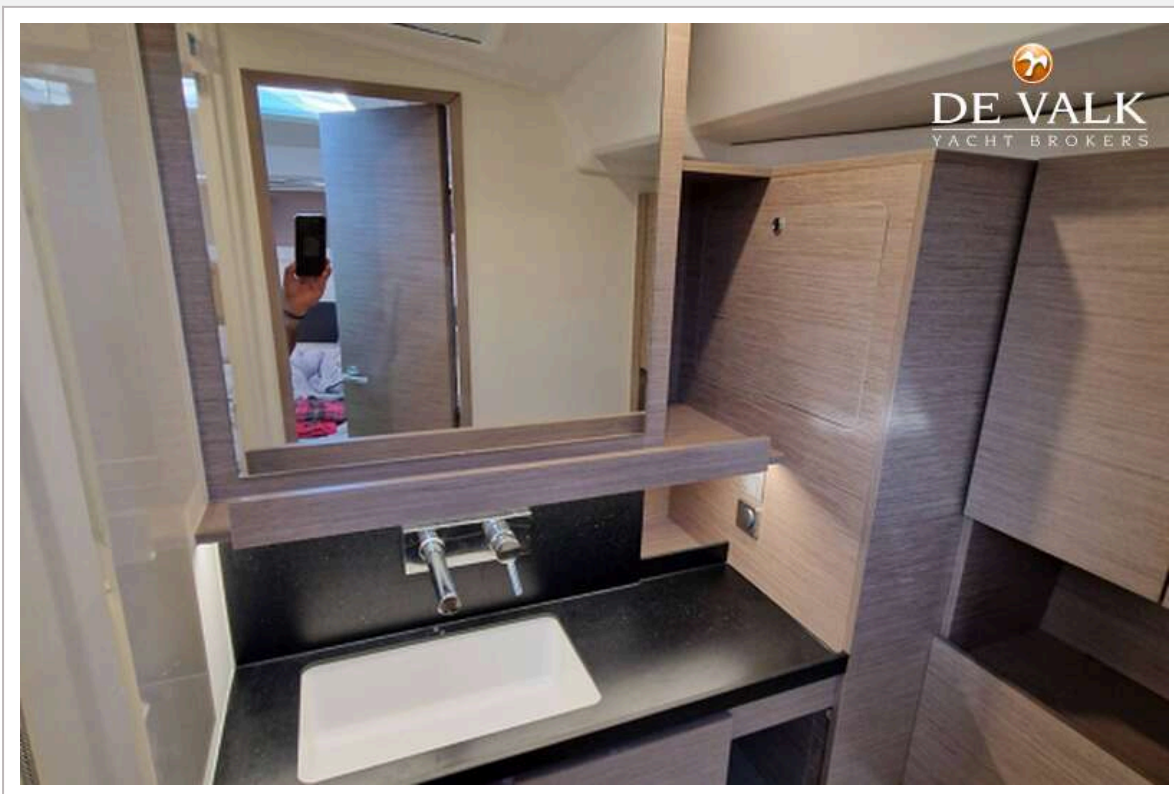


HANSE 460

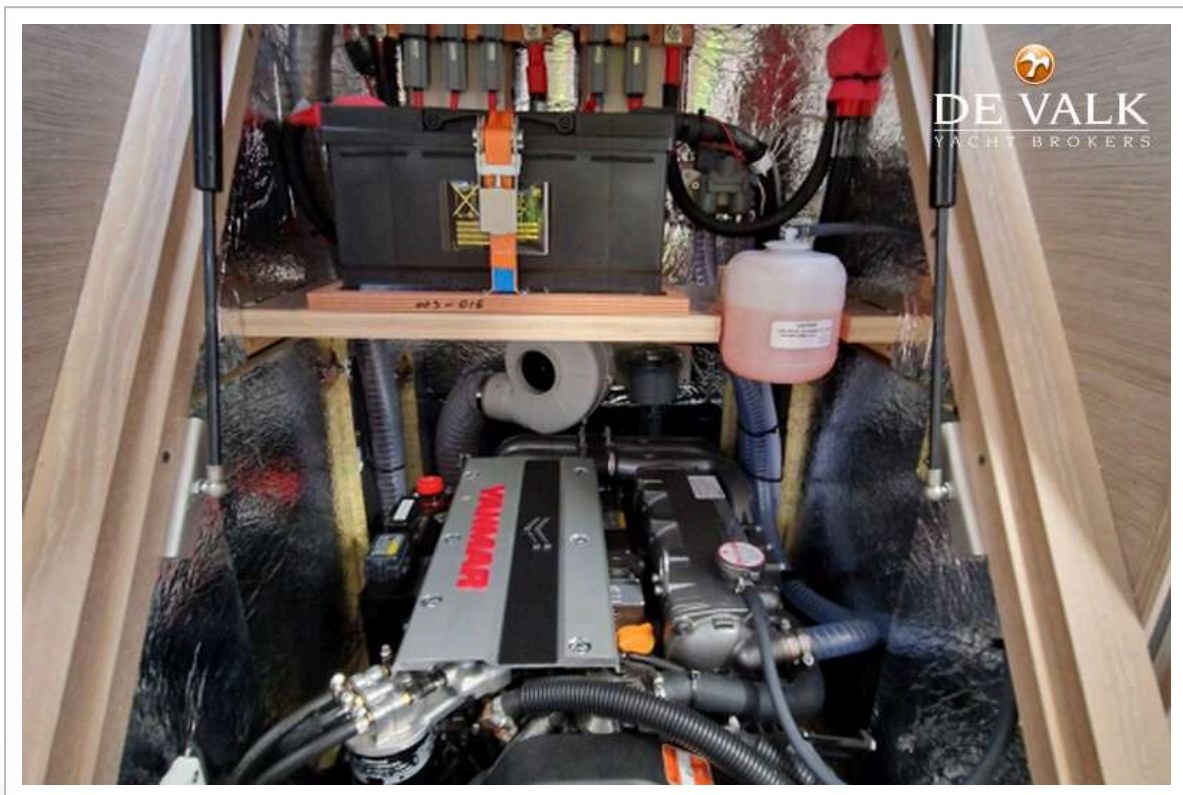


HANSE 460





HANSE 460



HANSE 460

