



BENETEAU OCEANIS 46.1

BENETEAU OCEANIS 46.1

BROKER'S COMMENTS

Following the iconic Oceanis 45, the Oceanis 46.1 was the logical next step for Beneteau in their endeavors to create the next level blue water cruiser. Innovative hull design, improved performance and elegance. And comfort and easy of handling that makes the iconic Oceanis series so popular. This one-owner (no charter) this 46.1 has a comprehensive list of options and packages including Family trim option, Classic sail + Downwind pack, Coastal + Offshore pack and much more to discover onboard. Currently in the Caribbean enjoying life and would be happy to take you anywhere you want to go.

Marc Weijenberg

SPECIFICATIONS

Dimensions	14.60 x 4.50 x 2.35 (m)	Builder	Beneteau SA
Built	2020	Cabins	3
Material	GRP	Berths	6
Engine(s)	1 x Yanmar 4JH57 diesel	Hp/Kw	57.00 (hp), 41.95 (kw)
Asking price	\$ 395.000 (VAT Not paid)	Lying	contact sales office

CONTACT

Sales office	De Valk Thuishaven	Telephone	+31 35 5829042
Address	Peperstraat 7 1411 PX Naarden NL	E-mail	thuishaven@devalk.nl

DISCLAIMER

These particulars are given in good faith as supplied but cannot be guaranteed.



GENERAL

Model	BENETEAU OCEANIS 46.1
Type	sailing yacht
LOA (m)	14,60
LWL (m)	13,24
Beam (m)	4,50
Draft (m)	2,35
Air draft (m)	20,50
Headroom (m)	1,98
Year built	2020
Builder	Beneteau SA
Country	France
Designer	Pascal Conq & Nauta Design
Displacement (t)	11
Ballast (tonnes)	cast iron 2,73
CE norm	A
Hull material	GRP
Hull shape	hard chine
Keel type	bulb keel
Superstructure material	GRP
Deck material	GRP
Deck finish	non-skid moulded in
Superstructure deck finish	non-skid moulded in
Cockpit deck finish	Iro-deck (Iroko wood)
Window material	Acrylic
Deckhatch	with mosquito screens/blinds
Portholes	aluminium With blinds and extra for aftcabin (+ mosquito nets)
Fuel tank (litre)	polyethylene 195 + 200
Level indicator (fuel tank)	yes
Freshwater tank (litre)	polyethylene 1 x 330
Level indicator (freshwater)	yes



Blackwater tank (litre)	polyethylene 1 x 50 / 1 x 80 ltr
Blackwater tank extraction	deck extraction + uw line
Wheel steering	cable steering 2 x white composite
Emergency tiller	yes
More info on hull	Pearl grey hull colour, stainless bow protection strip, aft transom protection, cockpit bench extensions + halyard bags, covers for helmstations, cockpit table and whiches.
Extra info	7-year yard-warranty on hull & deck (from 2020 onwards)

ACCOMMODATION

Cabins	3
Berths	6
Interior	White Oak Alpi Trim
Floor	Nordic teak laminate floors
Saloon	White Ultra leather upholstery & Macademia padding and covering
Headroom saloon (m)	1,98 - 2,01
Dinette to convert into berth	with fill-in cushion, dim.: 2,30 x 1,20 mtr
Galley	yes
Countertop	Clay compact/Corian
Sink	stainless steel 2 x
Cooker	calor gas 2 burner (calor gas)
Oven	calor gas
Fridge	12v Isotherm 130ltr with extractor fan and 12v 85 ltr top opening icebox
Hot water system	220V + engine 40 ltr
Water pressure system	electrical
Manual and/or foot pump	seawater/freshwater footpump
Crockery	yes
Owners cabin	double bed
Bed length (m)	2,00 x 1,53/1,23m, headroom: 1,95m
Wardrobe	hanging/drawers/shelves



Bathroom	en suite I
Toilet	separate
Toilet system	electric "quiet flush"
Wash basin	in the bathroom
Shower	separate
Guest cabin 1	double bed
Bed length (m)	2,05 x 1,40m, headroom: 1,92m
Wardrobe	hanging and shelves
Bathroom	shared II
Toilet	shared
Toilet system	electric "quiet flush"
Wash basin	in the bathroom
Shower	shared
Guest cabin 2	double bed
Bed length (m)	2,05 x 1,40m, headroom: 1,92m
Wardrobe	hanging and shelves
Extra info	6 x 3-speed interior fans, led indirect lighting, custom made salon-seat covers, plissé style fold down window-curtains,

MACHINERY

No of engines	1
Make	Yanmar
Type	4JH57
HP	57
kW	41.95
Fuel	diesel
Year installed	2020
Maximum speed (kn)	7,5
Cruising speed (kn)	6,5
Consumption (l/hr)	4
Engine hours	2450



Engine cooling system	freshwater heat exchanger
Engine controls	electrical
Bowthruster	electric Sidepower SE80.185T
Manual bilge pump	yes
Electric bilge pump	yes
Electrical installation	12v/220v
Generator	Portable Honda EU22i 4-stroke 220v/2200watt
Start battery	yes
Service battery	3 x 200ah Lithium Smart (2023)
Battery monitor	Navicolor (3,5") plus Victron smart bluetooth BMS
Battery charger	2 x 40amp Cristec
Inverter	Victron Phoenix 220v/3000watt
Solar panel	with 100/30 Victron Smart Solar MPPT's 2 x Solbian flexible 186watt
Shorepower	with cable
Watermaker	Rainman (220v) Hi-capacity 100-140ltrs plus Rainman semi-portable
Extra info	Remoran Wave 3 300watt hydrogenerator

NAVIGATION

Compass	Plastimo
Electric compass	via autopilot B&G Precision 9
Multi control display	2 x B&G Zeus 9" Multi Function Displays plus B&G Triton display
Depth sounder	B&G + Airmar transducer
Log	B&G + Airmar transducer
Windset	B&G
VHF	B&G V60 with intergrated AIS receiver
Autopilot	B&G Nac 3 plus WR10 remote control
Rudder angle indicator	via autopilot
Radar	B&G Halo 20 Plus doppler
GPS	B&G
Wifi antenna	Starlink system



AIS transceiver	Emtrak B954 full function Mode B SOTDMA 5 watt
Navigation lights	LED
Extra info	Factory installed Coastal + Offshore pack

EQUIPMENT

Sprayhood	Large version with forward windows detachable
Dodger	Sunbrella (2024)
Bimini	Sunbrella (2024)
Cockpit cushions	Custom made
Cockpit table	Delux grp table with handhold, light and storage
Bathing platform	Large; 2,65 x 0,80m, electrically operated with remote control
Boarding ladder	stainless steel
Deck shower	hot & cold water
Anchor	Sarca Excel 6 + Mantus swivel
Anchor chain	100 mtr (10mm)
Other ground tackle	yes
Windlass	electrical 12v/1000watt verticalwith chain-counter and helmstation controls
Outboard	Honda 2,3 hp (4-stroke, 2023)
Sea railing	wire
Grab rail (superstructure)	stainless steel
Pushpit	stainless steel
Pulpit	stainless steel
Life raft	container Plastimo Offshore Trans Ocean 24hr Plus
Life raft (pers)	6
Last life raft survey	January 2024
Lifejackets	2
Safety harness	1
Lifebuoy	1 x
Radar reflector	yes
Fenders	yes



Mooring lines	yes
Spare parts	yes
Tools	yes
Alarm system	yes
TV	(not mounted) LG Smart 24"/60cm
Satellite	Starlink system
Radio	Fusion sound system with salon- and cockpit speakers
Fire extinguisher	3 x (2020)
Extra info	portable Baby bbq

RIGGING

Rigging	9/10 sloop-rigged, Down-wind package
Standing rigging	wire (2020)
Brand mast	Z-Diffusion
Material mast	aluminium
Spreaders	2 x set
Mainsail cover	Lazy-Bag plus Lazy Jacks (2024)
Battcars	Rutgerson
Fully battened mainsail	Elvstrom Dacron 54m2, 2020 (3-reefs)
Jib	Evstrom Dacron, 40m2 (2020)
A-symetric spi	Roller Tasker A-symetric cruising-chute 152m2 and sock
Stormjib	with hanks on detachable baby-stay
Self tacking jib installation	yes
Reefing System	slabreefing 3-points reef
Boomvang	Rigid-boomvang
Primary sheet winch	2 x Harken 46 ST (manual)
Multifunctional winches	halyard/sheet winches Harken 40.2 ST electric + 40.2 ST manual
Winchcovers	yes
Spi-pole	Seldén Whisker pole (extendible)
Extra info	Extra halyard-stoppers, detachable baby stay for stormjib



Extra info

With all halyards lead aft into the cockpit and electric winch handling the rig is secure and easy.



BENETEAU OCEANIS 46.1



BENETEAU OCEANIS 46.1



BENETEAU OCEANIS 46.1



BENETEAU OCEANIS 46.1



BENETEAU OCEANIS 46.1



BENETEAU OCEANIS 46.1



BENETEAU OCEANIS 46.1

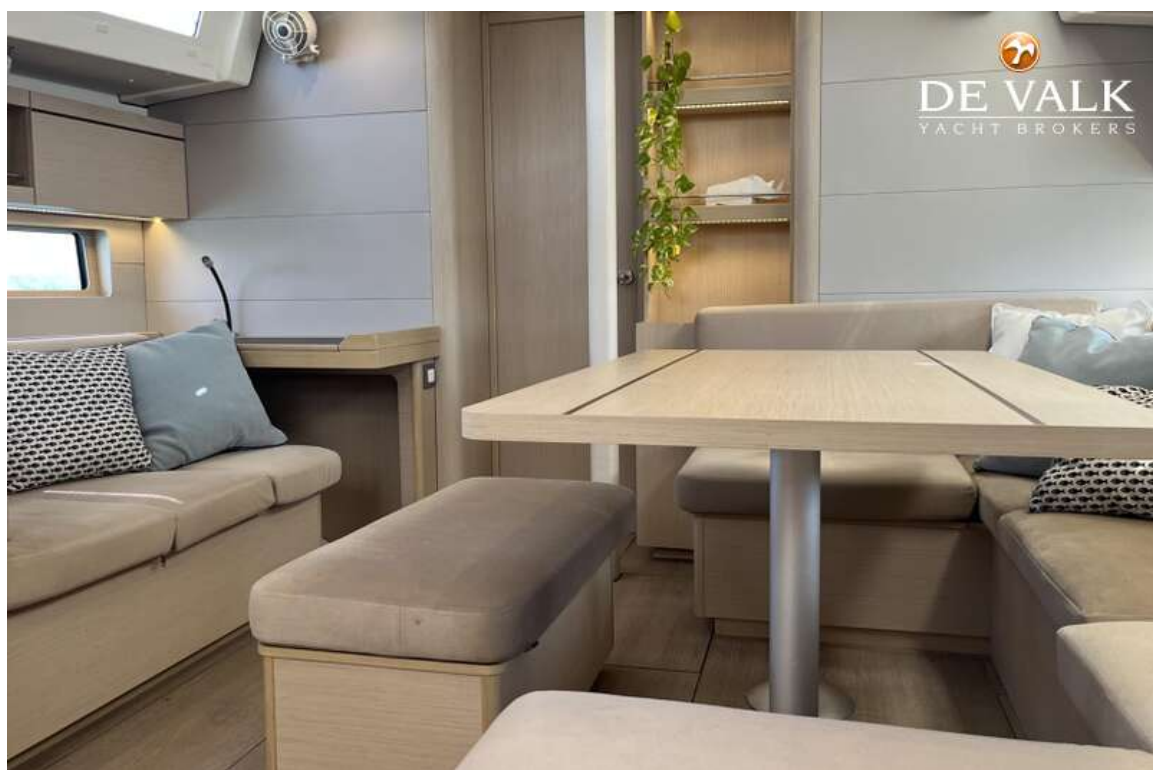


BENETEAU OCEANIS 46.1





BENETEAU OCEANIS 46.1



BENETEAU OCEANIS 46.1





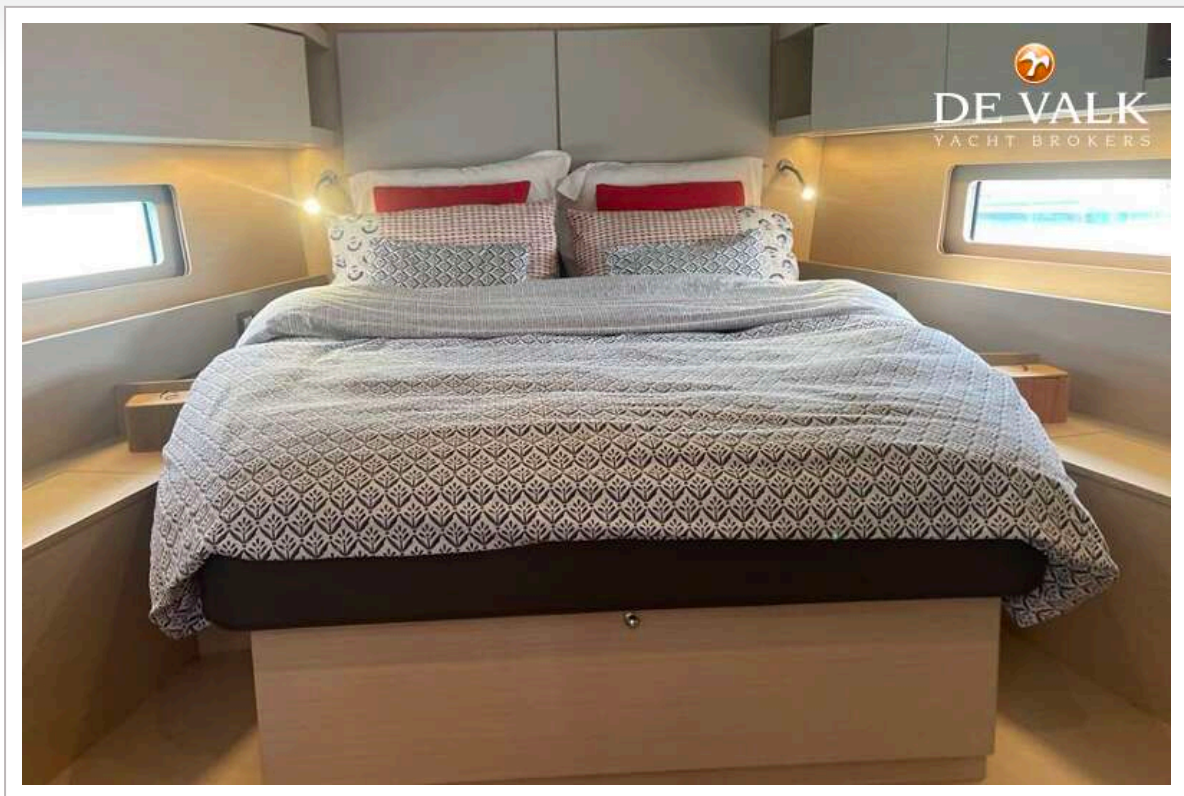
BENETEAU OCEANIS 46.1



BENETEAU OCEANIS 46.1



BENETEAU OCEANIS 46.1



BENETEAU OCEANIS 46.1

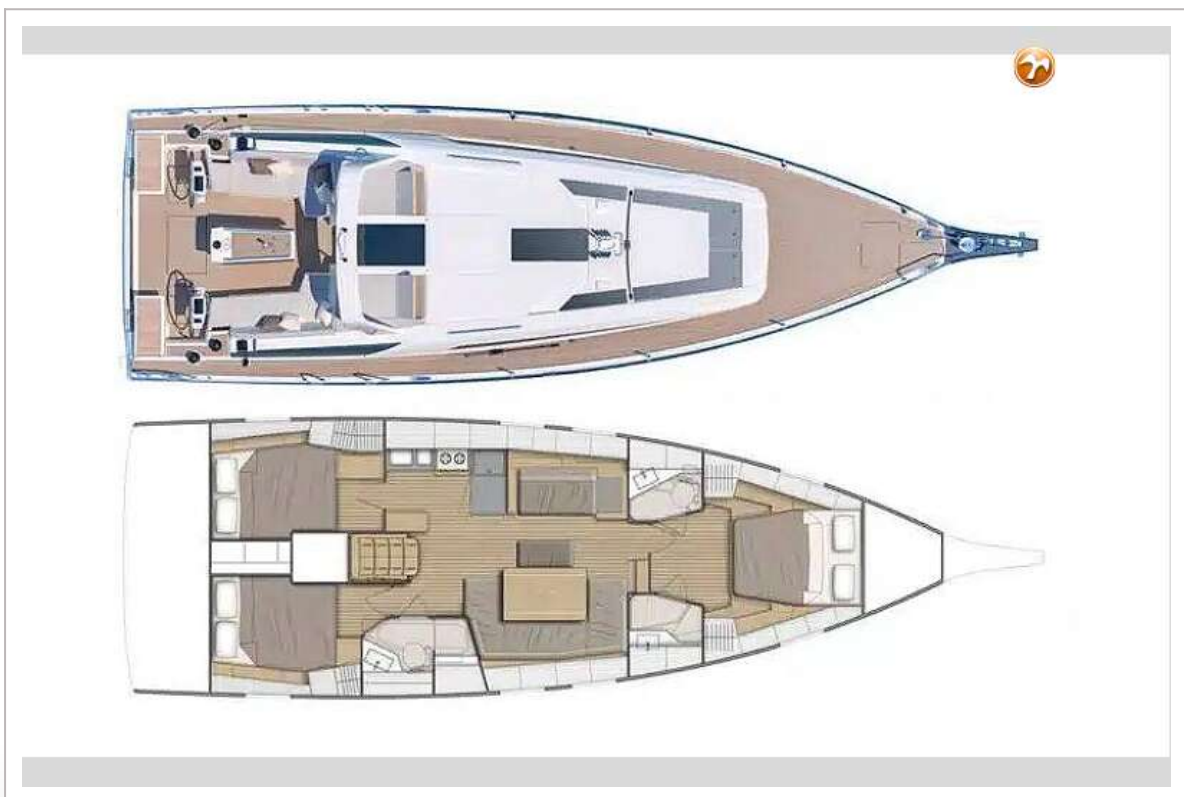


BENETEAU OCEANIS 46.1

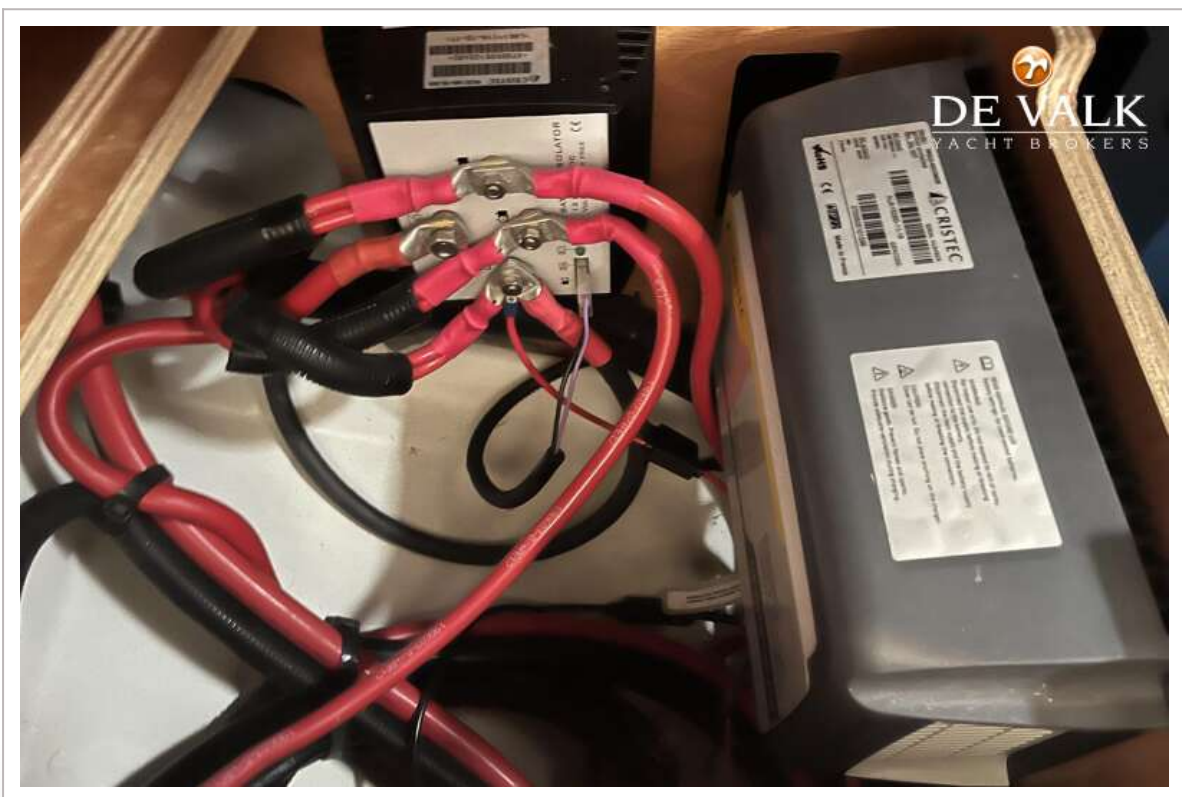




BENETEAU OCEANIS 46.1



BENETEAU OCEANIS 46.1



BENETEAU OCEANIS 46.1

