



DE VALK
YACHT BROKERS



BRUCE ROBERTS 50 (HENRY MORGAN)



DE VALK
YACHT BROKERS

BRUCE ROBERTS 50 (HENRY MORGAN)

BROKER'S COMMENTS

Beautiful Bruce Roberts designed Henry Morgan 50 (modified), sturdy built by G.T. Boatbuilders (Brisbane) in Australia. Made for going the Seven Seas. Very well equipped. And as liveaboard looking for massive space and you want to live in Australian luxury, Aurelia V is your perfect yacht! It may be an option to take over the berth at RSYC. Call or email for more info. Asking price USD 125,000.

Maarten de Kroon

SPECIFICATIONS

Dimensions	15.30 x 4.90 x 2.40 (m)	Builder	G.T. Boatbuilders Brisbane
Built	1989	Cabins	3
Material	GRP	Berths	7
Engine(s)	1 x Perkins 6.354M diesel	Hp/Kw	120.00 (hp), 88.32 (kw)
Asking price	\$ 125.000 (VAT Not paid)	Lying	Singapore

CONTACT

Sales office	De Valk Asia	Telephone	+65 826 679 95
Address		E-mail	asia@devalk.nl
	AS		

DISCLAIMER

These particulars are given in good faith as supplied but cannot be guaranteed.



BRUCE ROBERTS 50 (HENRY MORGAN)

GENERAL

Model	BRUCE ROBERTS 50 (HENRY MORGAN)
Type	sailing yacht
LOA (m)	15,30
LWL (m)	13,70
Beam (m)	4,90
Draft (m)	2,40
Headroom (m)	2,20
Year built	1989
Builder	G.T. Boatbuilders Brisbane
Country	Australia
Designer	Bruce Roberts
Displacement (t)	25
Hull material	GRP
Hull colour	off-white
Hull shape	round-bilged
Keel type	long keel
Bilge keels	yes
Superstructure material	GRP
Deck material	GRP
Deck finish	non-skid paint
Superstructure deck finish	non-skid paint
Cockpit deck finish	synthetic teak
Antifouling (year)	2019
Window material	tempered glass
Deckhatch	yes
Insulation	foam
Radar arch	non collapsible
Fuel tank (litre)	stainless steel 2305
Level indicator (fuel tank)	yes
Freshwater tank (litre)	stainless steel 2100



BRUCE ROBERTS 50 (HENRY MORGAN)

Blackwater tank (litre)	stainless steel 295
Wheel steering	hydraulic
Outside helm position	hydraulic
Emergency tiller	yes

ACCOMMODATION

Cabins	3
Berths	7
Interior	mahogany (Brazilian)
Floor	wood
Pilot house	yes
Headroom saloon (m)	2.2m
Navigation center	yes
Chart table	yes
Aft Cabin	yes
Dinette	yes
Galley	yes
Countertop	wood
Sink	stainless steel Double
Cooker	calor gas 4 burner
Oven	Calor gas
Microwave	LG
Fridge	Domestic
Freezer	Domestic
Hot water system	220V + engine 35ltr
Water pressure system	electrical
Kettle	yes
Crockery	yes
Owners cabin	double bed Master
Bed length (m)	2.0m
Wardrobe	hanging/drawers/shelves



BRUCE ROBERTS 50 (HENRY MORGAN)

Bathroom	en suite Master
Toilet	en suite Master
Toilet system	electric
Wash basin	in the bathroom Master
Shower	en suite Master
Guest cabin 1	double bed
Bed length (m)	2.0m
Wardrobe	hanging/drawers/shelves
Bathroom	separate
Toilet	separate
Toilet system	electric
Wash basin	in the bathroom
Guest cabin 2	twin single (used as workshop)
Bed length (m)	2.0m
Wardrobe	hanging/drawers/shelves

MACHINERY

No of engines	1
Make	Perkins
Type	6.354M
HP	120
kW	88.32
Fuel	diesel
Year installed	1990
Maximum speed (kn)	9
Cruising speed (kn)	6,0
Consumption (l/hr)	4,6
Range (nm)	3000
Engine hours	6740
Engine cooling system	freshwater heat exchanger
Drive	shaft



BRUCE ROBERTS 50 (HENRY MORGAN)

Shaft seal	PSS drip less (2019)
Engine controls	bowden cable
Gearbox	mechanical
Bowthruster	electric Sleipner Side Power 10hp
Propeller type	fixed
Propeller blades	3
Propeller shaft material	stainless steel
Shaft lubrication	water
Manual bilge pump	yes
Electric bilge pump	yes
Electrical installation	12/24/110/240 volt
Generator	dry exhaust Honda 20i (portable)
Start battery	2x 85 Ah Delco
Service battery	4x 220 Ah Victron (2020)
Battery monitor	Victron Cerbo GX touch
Battery charger/inverter	Victron MultiPlus-II 24/3000/70 (2020)
Wind generator	AirX 400 24v
Solar panel	2x 255W + Victron MPPT 100/30 charger (2016)
Shorepower	with cable
Watermaker	The Little Wonder 160 - 200, 24volt, 30 l/h
Extra info	Last engine service Feb 25
Extra info	2 alternators, Lucas 70Amp & Presdite 150Amp
Extra info	Engine room fan, engine serviced 2024

NAVIGATION

Compass	Plastimo 135
Multi control display	Raymarine Multi
Depth sounder	yes
Forw. looking depth sounder	Probe Interface (sonar)
Log	Raymarine i50
Windset	Raymarine i60



BRUCE ROBERTS 50 (HENRY MORGAN)

VHF	Standard Horizon Explorer GX1800
Autopilot	Raymarine ACU300 & i70 (2024)
Rudder angle indicator	yes
Radar	Raymarine Digital 418D
Radar/GPS/plotter	2x Raymarine HybridTouch e127 (2024)
Electronic chart(s)	yes
AIS transponder	Em-Trak B300
Radio receiver	Icom N33 IC-M710AUS
EPIRB	P&W SOS 406
Navigation lights	yes

EQUIPMENT

Fixed windscreen	yes
Bimini	yes
Sun awning	yes
Cockpit cushions	yes
Cockpit table	yes
Cockpit chairs	yes
Bathing platform	yes
Boarding ladder	yes
Transom door	yes
Deck shower	yes
Anchor	CQR Plough 2x 30 kg
Anchor chain	13mm, 40m + 100m 1" rope
Chain counter	yes
Windlass	electrical Italgo Star Plus 24v 2300W (2019)
Capstan	yes
Deck wash	yes
Dinghy	yes
Outboard	Tohatsu 18 HP
Davits	yes



BRUCE ROBERTS 50 (HENRY MORGAN)

Davits controls	manual
Sea railing	stainless steel
Grab rail (superstructure)	stainless steel
Railing side opening gates	3x (sides and aft)
Pushpit	Zom Bowsprit w teak footing plate
Life raft	container RFD offshore
Life raft (pers)	6
Lifejackets	yes
Lifebuoy	4x
Clearview window	yes
Horn	yes
Radar reflector	yes
Fenders	yes
Mooring lines	yes
Spare parts	yes
Tools	yes
TV	Penasonic 12v 23" HDLed
Radio	Guzare GR304 USB
Cockpit speakers	yes
Clock - barometer	yes
Fire extinguisher	1x CO2 + 4x powder
Extinguisher in engine room	1x CO2
Extra info	Outdoor BBQ Grill

RIGGING

Rigging	cutter
Standing rigging	wire 2018
Brand mast	All Yacht Spars
Material mast	aluminium
Spreaders	2 x 2
Mainsail	Dacron, used



BRUCE ROBERTS 50 (HENRY MORGAN)

Mainsail cover	Maindrop with zipper
Jib	Dacron used
Genoa	Dacron used
Genoa furler	Furlex Type D
Cutter furler	Profurl Type B35L
Spinnaker	In sniffer
Stormjib	yes
Self tacking jib installation	yes
Reefing System	slabreefing
Boomvang	gasspring
Secondary sheet winch	Barient 27ST
Genoa sheetwinches	Barient 36ST
Halyard winches	At the mast, 3x, Barient 24ST
Winchcovers	yes
Spi-pole	Dual, on rail at the mast
Isolated backstay	yes



BRUCE ROBERTS 50 (HENRY MORGAN)



BRUCE ROBERTS 50 (HENRY MORGAN)



BRUCE ROBERTS 50 (HENRY MORGAN)



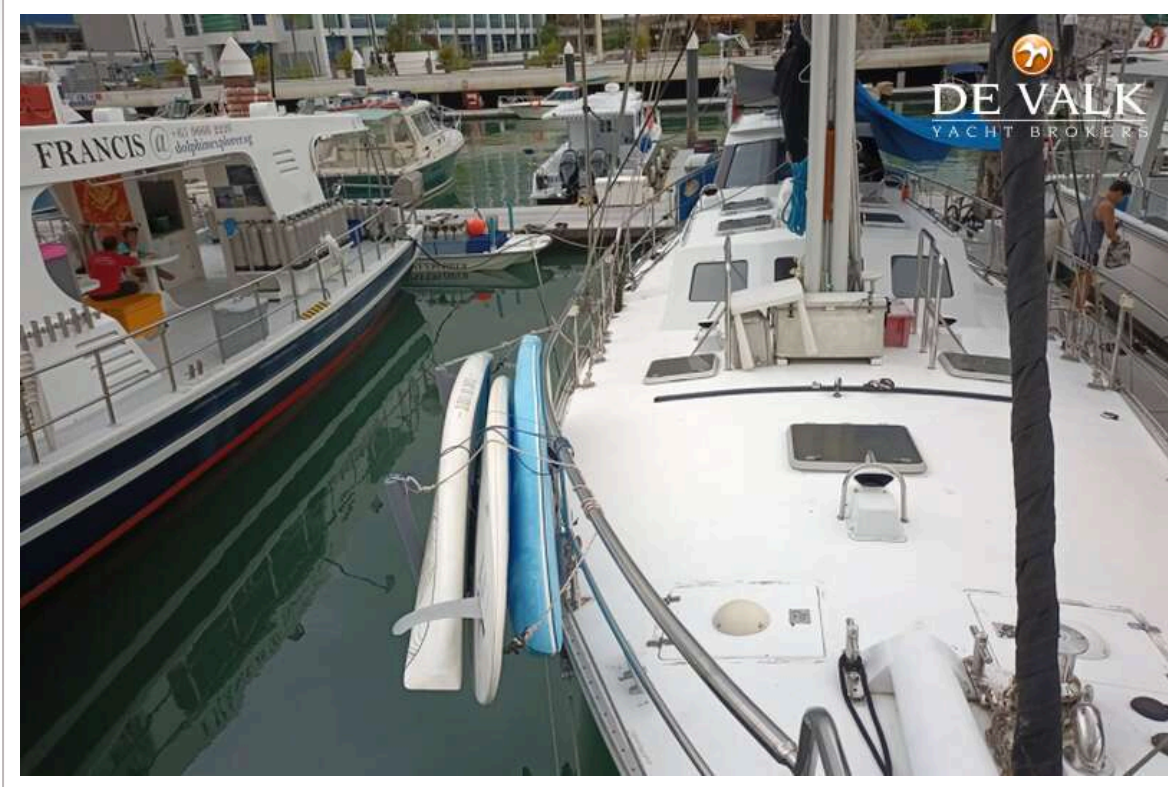
BRUCE ROBERTS 50 (HENRY MORGAN)



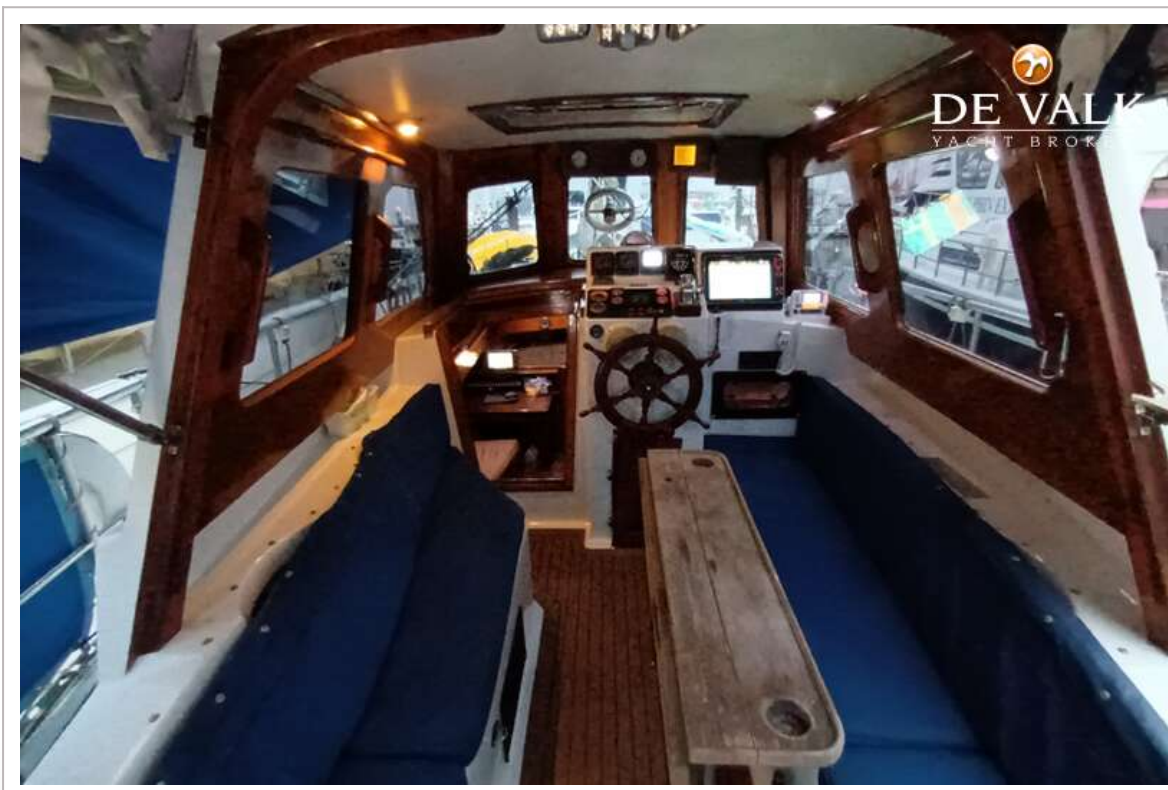
BRUCE ROBERTS 50 (HENRY MORGAN)



BRUCE ROBERTS 50 (HENRY MORGAN)



BRUCE ROBERTS 50 (HENRY MORGAN)



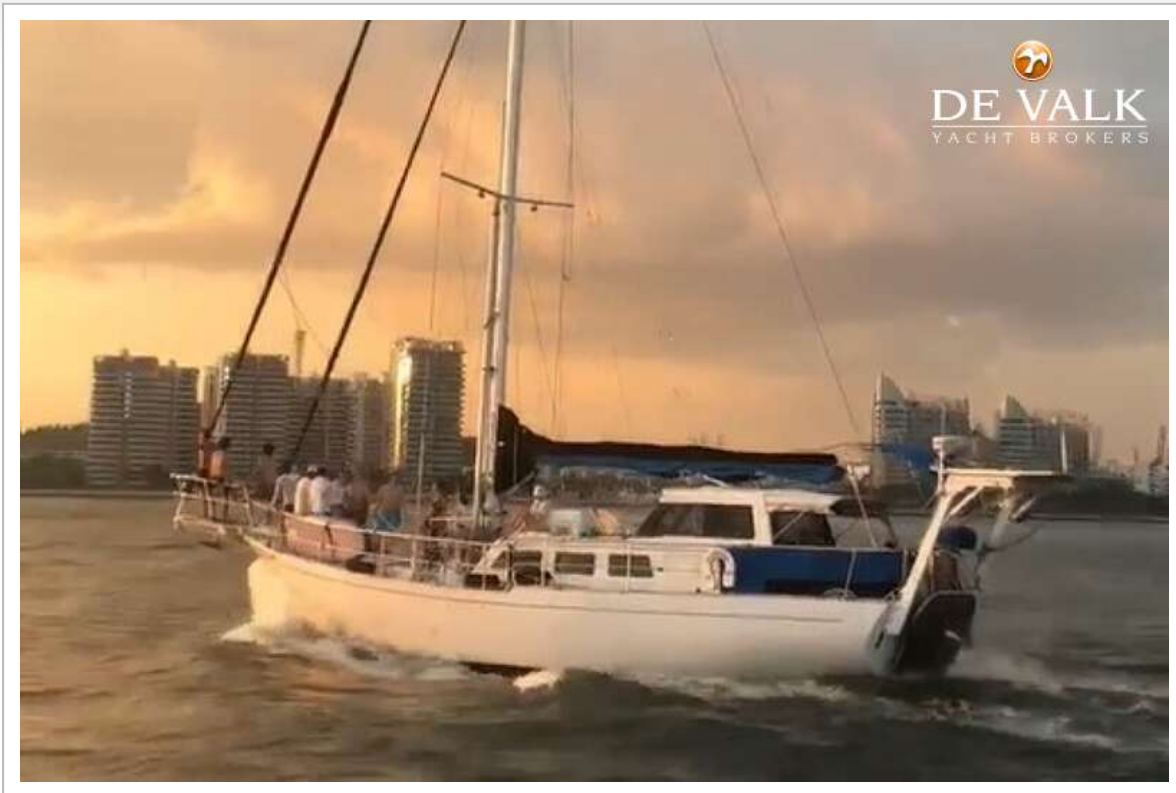
BRUCE ROBERTS 50 (HENRY MORGAN)



BRUCE ROBERTS 50 (HENRY MORGAN)



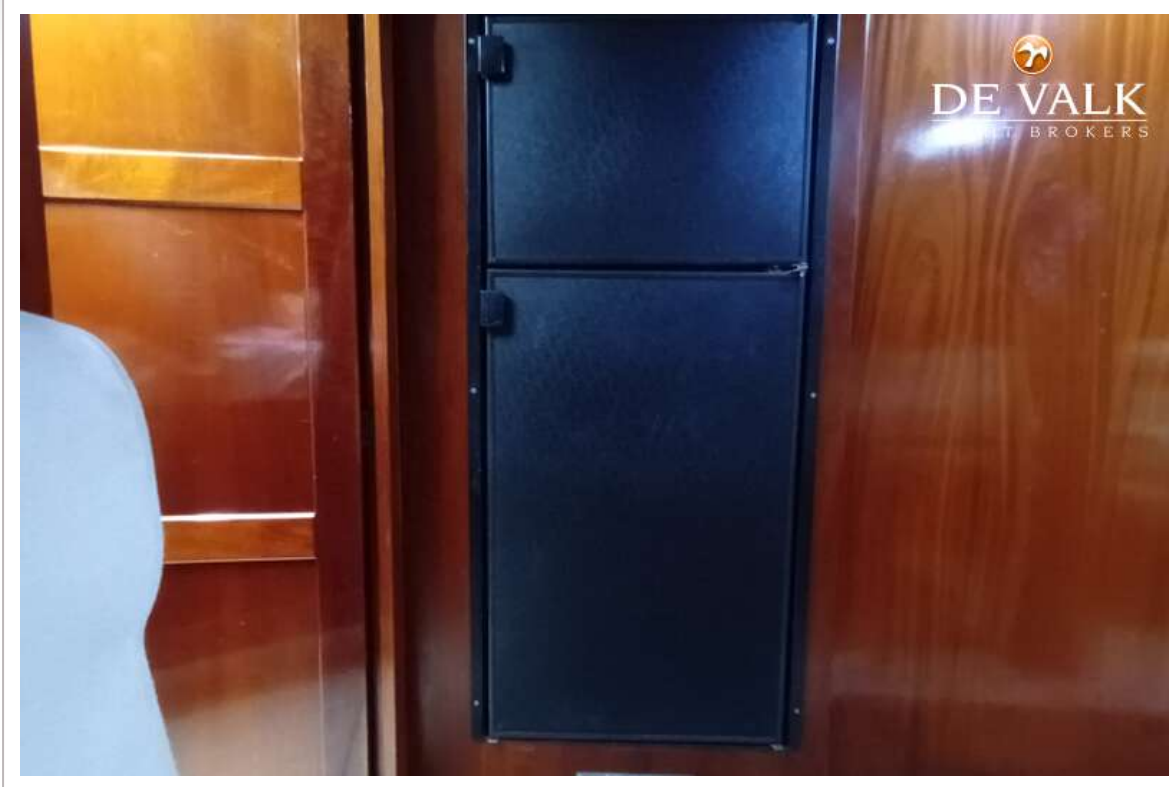
BRUCE ROBERTS 50 (HENRY MORGAN)



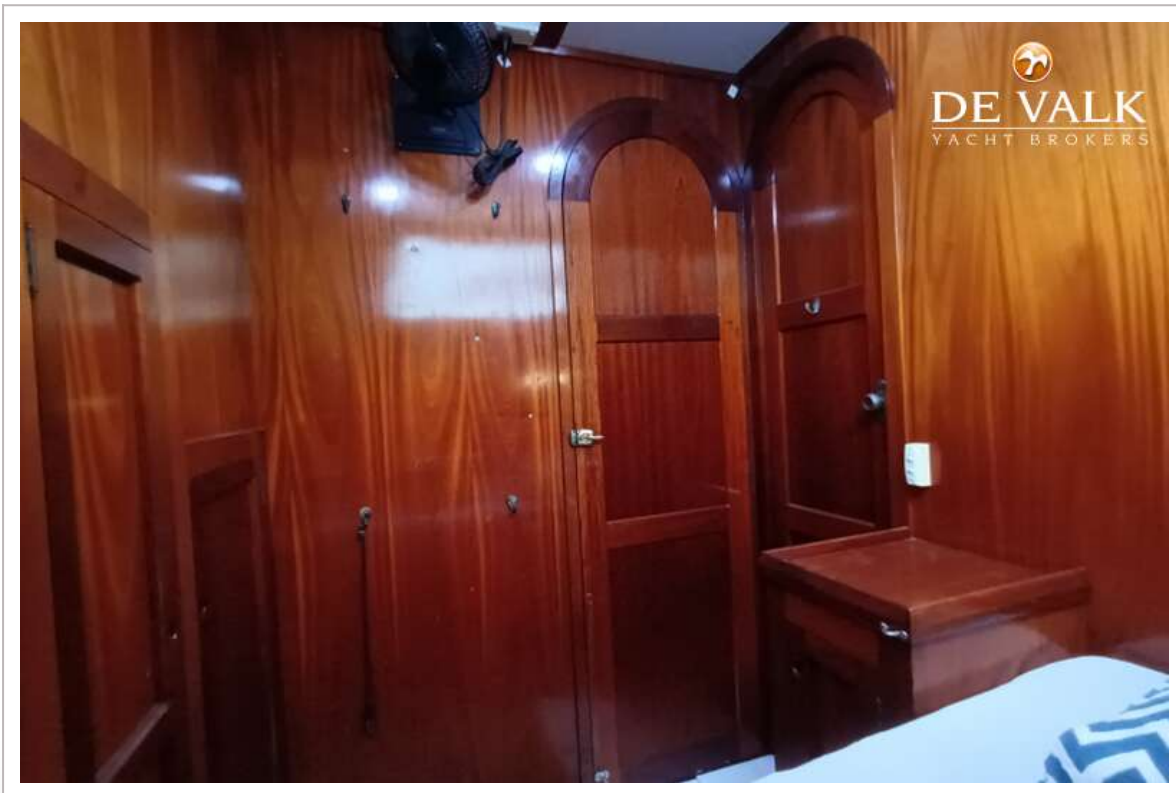
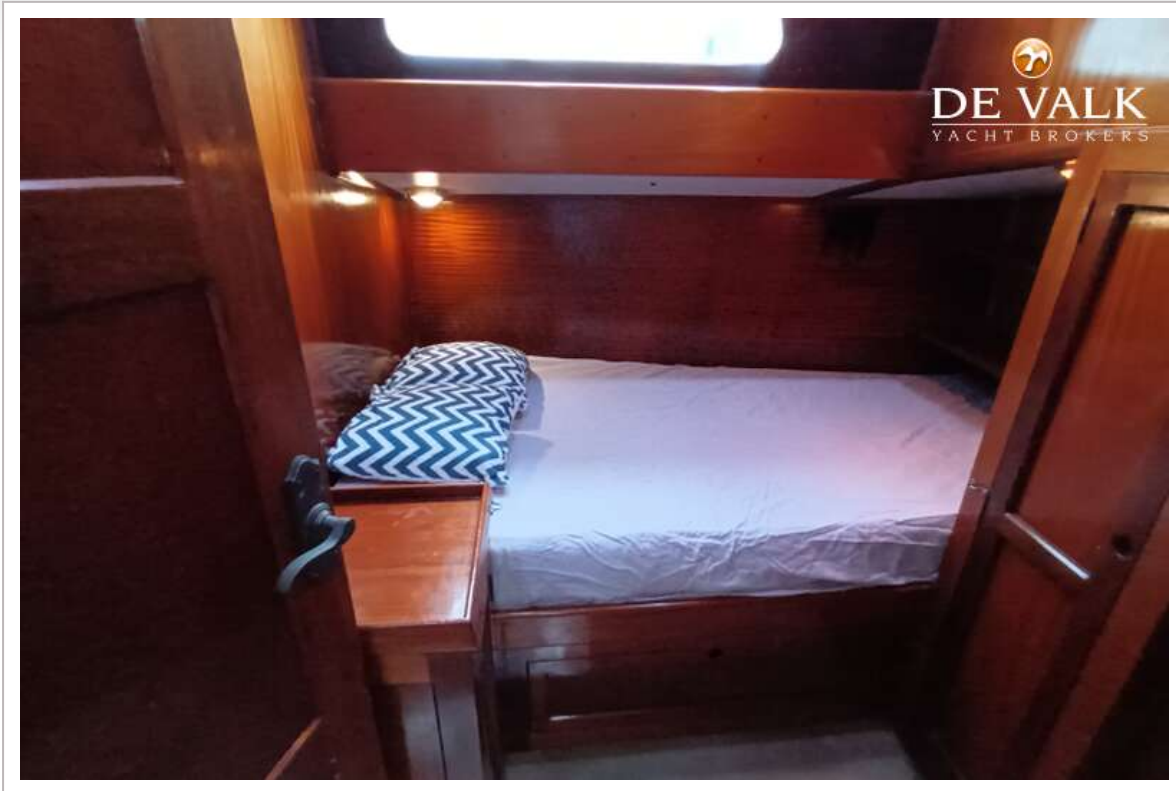
BRUCE ROBERTS 50 (HENRY MORGAN)



BRUCE ROBERTS 50 (HENRY MORGAN)



BRUCE ROBERTS 50 (HENRY MORGAN)



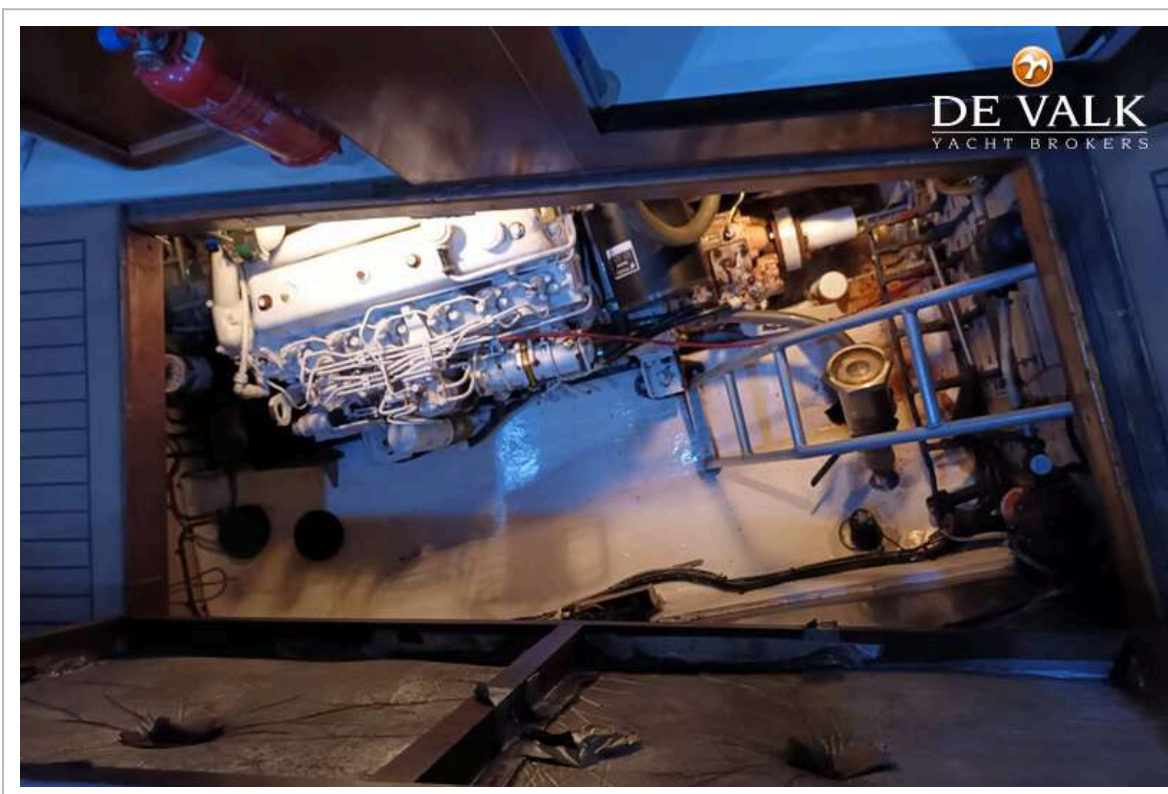
BRUCE ROBERTS 50 (HENRY MORGAN)



BRUCE ROBERTS 50 (HENRY MORGAN)



BRUCE ROBERTS 50 (HENRY MORGAN)



BRUCE ROBERTS 50 (HENRY MORGAN)

