



DE VALK
YACHT BROKERS



ALAN PAPE 46 KETCH



DE VALK
YACHT BROKERS

ALAN PAPE 46 KETCH

BROKER'S COMMENTS

This robust steel ketch, designed by Alan Pape, is a true bluewater sailer, built for long-distance voyages to destinations such as the Arctic and Antarctica. Comfortable and safe, even in rough seas. Thanks to her solid construction and displacement, she requires some wind, but rewards you with surprising speed. The spacious, classic interior is warm and fully ocean-proof. She was prepared for departure but has seen little use in recent years. Seize this opportunity and turn your dream voyage into reality. Contact us for more information or a viewing in Friesland, in the north of Holland.

Jan-Ward van Dantzig

SPECIFICATIONS

Dimensions	16.00 x 3.97 x 2.20 (m)	Builder	KCS Marine - London
Built	1986	Cabins	2
Material	Steel	Berths	8
Engine(s)	1 x Ford Lehman 2110 diesel	Hp/Kw	80.00 (hp), 58.88 (kw)
Asking price	€ 98.000 (VAT Paid)	Lying	The Netherlands

CONTACT

Sales office	De Valk Thuishaven	Telephone	+31 35 5829042
Address	Marinaweg 8 (postal address) 1361 AC Almere NL	E-mail	thuishaven@devalk.nl

DISCLAIMER

These particulars are given in good faith as supplied but cannot be guaranteed.



ALAN PAPE 46 KETCH

GENERAL

Model	ALAN PAPE 46 KETCH
Type	sailing yacht
LOA (m)	16,00
Beam (m)	3,97
Draft (m)	2,20
Air draft (m)	18,50
Headroom (m)	1,90
Year built	1986
Builder	KCS Marine - London
Country	United Kingdom
Designer	Alan Pape
Displacement (t)	17
Ballast (tonnes)	lead
CE norm	NA
Hull material	steel
Hull colour	yellow & Black / zwart / Schwarz
Hull thickness (mm)	4 - 5
Hull shape	hard chine
Keel type	long keel
Superstructure material	steel
Superstructure (mm)	4
Deck plate thickness (mm)	4
Deck material	steel
Deck finish	Treadmaster Grey painted / Grijs geschilderd / Grau lackiert
Superstructure deck finish	non-skid paint Whale Grey & Pearl White paint / verf / Lackierung
Cockpit deck finish	teak
Antifouling (year)	2024
Dorades	Stainless steel
Window frame	aluminium
Window material	perspex 6 x 10 mm (2018)



ALAN PAPE 46 KETCH

Deckhatch	Lewmar
Portholes	steel
Insulation	foam (expanded / geëxpandeerd / expandierter)
Fuel tank (litre)	steel 600
Fuel tank 2 (litre)	steel 200
Level indicator (fuel tank)	yes
Fuel daytank (litre)	steel 200
Level indicator (daytank)	yes
Freshwater tank (litre)	steel 2 x 450 + 35 (water maker tank)
Level indicator (freshwater)	yes
Blackwater tank (litre)	25 (Hoses / slangen / Schläuche - 2017)
Blackwater tank extraction	pump Electric/ elektrisch
Wheel steering	(2017)
Inside helm position	Autohelm Joystick (needs to be checked) in the aft cabin at a perspex all round visibility hatch.
Outside helm position	hydraulic Steering pedestal / stuurstand / Steuersaule
Emergency tiller	yes
More info on hull	Underwater hull blasted in 2019, then 2 x layer of multi-strength, a primer and antifouling applied.
More info on paintwork	Hull was spray-painted yellow (Ral 1021) in 2019.
Extra info	Watertight structural bulk heads fore and aft of the engine room.
Extra info	Keel hung rudder constructed from 2 mm plate and oil filled.
Extra info	Diesel daytank filled with 24 Volt Jabsco Mini Puppy fuel pump (2017).

ACCOMMODATION

Cabins	2
Berths	8
Interior	mahogany & White bulk heads / Witte schotten / Weiße Schotten
Floor	wood Mahogany / mahonie / Mahagoni
Aft deck	yes



ALAN PAPE 46 KETCH

Saloon	Upholstery & 9 cm cold foam mattresses in saloon (2019).
Headroom saloon (m)	2.25 m
Heating	stove diesel Dickinson (in the saloon / in de salon / im Salon)
Heating 2	central heating Eberspacher 24V (2016 - to be serviced/te onderhouden/zu warten)
Navigation center	yes
Chart table	On port side next to the entrance - Headroom 1.83 m
Aft Cabin	Accessible via passage on port side - Headroom in passage : 1.55 m
Dinette	yes
Convertible berth	2 x On the saloon sofas and 2 x above the saloon sofas - On Port Side : 2 x 1.88 x 0.58 m and on Starboard Side : 2 x 1.88 x 0.68 m. All with Lee-Cloths (2019).
Opening door to cockpit	yes
Galley	On starboard side - Headroom : 1.86 m
Countertop	stainless steel
Sink	stainless steel 2 x
Cooker	calor gas ENO, 3 burner / pitten / Flammen
Oven	ENO
Extractor	12 Volt
Microwave	Quigg (2018)
Fridge	Toploader with a watercooled Frigoboat compressor (2018) - currently not usable, the outlet needs to be connected.
Hot water system	220V or central heating 22 L Boiler (11/1998)
Water pressure system	electrical Hydrophore - PAR MAX4 Water pump (2017)
Manual and/or foot pump	yes
Owners cabin	double bed In aft cabin / in achterkajuit / im Achterkabine
Bed length (m)	2 x 2.05 x 0.70 m - Headroom : 1.92 m
Wardrobe	hanging and shelves
Bathroom	en suite I - Headroom / Stahoogte / Stehhöhe : 1.90 m
Toilet	en suite In bathroom I / in badkamer I / im Badezimmer I
Toilet system	manual Jabsco (needs overhaul / te reviseren / benötigt Überholung)



ALAN PAPE 46 KETCH

Wash basin	in the bathroom I : Stainless steel / roestvast staal / Edelstahl
Extra info	Lee-Cloths (2019) under both blue mattresses (2014) in aft cabin.
Guest cabin 1	v-bed In front cabin / in voorkajuit / im Vorschiffskabine
Bed length (m)	2 x 2.10 x 0.70 m - Headroom : 1.90 - 1.97 m
Wardrobe	hanging and shelves
Bathroom	shared II - Headroom / Stahoogte / Stehhöhe : 1.90 m
Toilet	shared In bathroom II / in badkamer II / im Badezimmer II
Toilet system	manual Jabsco (needs overhaul / te reviseren / benötigt Überholung)
Wash basin	in the bathroom II
Shower	shared In bathroom II / in badkamer II/ im Badezimmer II
Extra info	Lee-Cloths (2019) under both blue mattresses (2014) in the front cabin.
Extra info	All (cold & hot) fresh water hoses renewed in 2018 and 2019. Watersysteem with 2 x Pre-Filter Sediment 5 Micron (for hot & cold water) & a 2 Fase Water Filter.
Extra info	Complete Shipsmanual (version 2021 with drawings etc. - 171 pages).

MACHINERY

No of engines	1
Make	Ford
Type	Lehman 2110
HP	80
kW	58.88
Fuel	diesel
Year installed	1986
Year of overhaul	2006
Maximum speed (kn)	7,5
Cruising speed (kn)	6
Consumption (l/hr)	4,5
Range (nm)	1200



ALAN PAPE 46 KETCH

Engine cooling system	seawater
Drive	shaft
Engine controls	bowden cable
Gearbox	hydraulic Velvet (to be replaced / te vervangen / zu ersetzen)
Bowthruster	electric 6.533 W (8 Hp) with a Carbon Brush M8389 (overhauled 2010)
Exhaust	watercooled
Propeller type	fixed
Propeller blades	3
Propeller shaft material	stainless steel 40 mm
Shaft lubrication	grease
Manual bilge pump	2 x Whale MK5 (are currently not usable, the outlet needs to be connected).
Electric bilge pump	1 x Whale Gulper Intelligent Control pump system 24 Volt 15 ltr/min with 5PPM MarPol filter (2017) & 1 x Engine driven V-belt bilge pump (are currently not usable, the outlet needs to be connected).
Bilge alarm	yes
Electrical installation	12, 24, 220 Volt
Start battery	2 x 55 Ah AGM - Optima Red Top (2018)
Service battery	6 x 55 Ah AGM - Optima Yellow Top (24 V - 2019)
Bowthruster battery	2 x 50 Ah Optima BlueTop (24V - 2021)
Battery monitor	yes
Battery charger	1 x WisperPower Battery Charger 24V-30A (2017) & 1 x 220/24V-4A & 1 x Blue Power GX 24V/15A (2011).
Inverter	1 x Mastervolt Mass 24V/2500 W and 1 x Intelligent 24 - 12 Volt Converter.
Wind generator	Superwind 15 A (2011)
Diode battery combiners	yes
Shorepower	with cable (20 m)
Insulation transformer	yes
Watermaker	Purr Powersurvivor 40E (Is preserved and will need servicing).



Extra info Racor diesel filter with water seperator (2017). Exhaust hose (2019). Custom made switchboard at the navigation table (2018).

Extra info The engine room is accessible from both the cockpit and from inside.

Extra info 1 x 100 A (2018) and 1 x 35 A Alternator. Euroconverter 200 Watt & 4 x Widapp DW200 R10 J2218.

NAVIGATION

Compass Ritchie Explore (2018)

Multi control display Autohelm ST50 Multi

Depth sounder Autohelm ST50

Log Autohelm ST50

Windset Autohelm ST50

Repeater Autohelm ST50 Multi

VHF 1 x Icom M421 with ATIS (2015) DSC & 1 x Icom M421 (2019) DSC

VHF handheld 1 x Icom M93D with DSC (2018) & 1 x Icom M33 (2017)

Autopilot Raymarine ST6000 - needs to be checked

Wind vane steering install. Aries

Rudder angle indicator Via autopilot

Radar Raymarine 9 Inch LCD screen (2011) & a 2 kW radar antenna (removed from mast, so needs to be installed in the mast)

GPS Garmin GPS152 - RUT955

Plotter OpenCPN

Navtex (2020)

Wifi antenna Internal & External & WiFi NMEA Seataalk Multiplexer & RadioCom 6 TRX including USB Converter + TX Cable & Marine Whip Antenna & stainless steel Marine Antenna & USB HUB 7 ports & Teltonica RUT955 4G LTE Wireless-N router & Quadrad2 XCell 8 way splitter & QuWireless QuSpot (all new in 2019).

AIS transceiver TrueHeading CTRX AIS Carbon (2011)

Radio receiver Icom 706 MK II (2011)



ALAN PAPE 46 KETCH

EPIRB	Ocean Signal ACR Satellite 3 - 406 MHz (2017)
Navigation lights	LED tri-color, anchoring, deck, bow and stern lights (2011).
Searchlight	12 Volt
Extra info	17 Inch monitor at chard table (2020) and 1 x AIS SART.
Extra info	Mast steps on both masts up till the mast heads.

EQUIPMENT

Sprayhood	Off White and red (old)
Bimini	yes
Boarding ladder	stainless steel
Deck shower	yes
Anchor	Rocna (33 Kg - 2011) & 1x CQR (25 Kg)
Anchor chain	1 x 62 m 13 mm G40 Chain and 1 x 62.5 m 13 mm G30 Chain (2016)
Anchor 2	Bruce (15 Kg - on stern / op achterdek / am Heck)
Anchor chain	1 x 5 m 12 mm chain with 50 m Nylon Rope
Windlass	electrical 2500 Watt Leroy Somers with twin gypsyies & capstan (on bow)
Capstan	2,000 Watt Francis (on aft) for kedge work - Lewmar deck button (2018).
Sea railing	wire Stainless steel / roest vast staal / Edelstahl
Grab rail (superstructure)	teak
Railing side opening gates	yes
Pushpit	Stainless steel with a bowsprit
Pulpit	Stainless steel
Life raft	Seasafe (2009)
Life raft (pers)	container 4
Last life raft survey	12-2020
Lifejackets	yes
Safety harness	yes
Lifebuoy	3 x Buoy (1 x with light)
Danbuoy	2 x Danboy



ALAN PAPE 46 KETCH

Safety lines on deck	yes
Rope cutter	yes
Horn	yes
Radar reflector	1 x Tri-Lens (in mizzen mast) and 1 x EchoMax Active XS Dual Band
Fenders	yes
Mooring lines	yes
Spare parts	yes
Tools	yes
Radio-cd player	Sony Bluetooth
Cockpit speakers	2 x
Speakers in salon	2 x JBL
Clock - barometer	yes
Fire extinguisher	2 x 6 Kg Powder ABC (2015), 1 x 2 Kg Powder ABC (2015), 2 x 2 Kg Foam BC (2020), 1 x 2 Kg Halon BCD (2014), 1 x 1 Kg special BCD (2017)
Latest extinguisher survey	2020
Extinguisher in engine room	Firemaster Automatic (needs to be checked / renewed)
Extra info	Epson XP3100 wireless printer (2017)
Extra info	Life-Sling, MOB Recovery, 1 x LED HandTorch, Grab Bag 24+, 1 x Sea Anchor with rope and 4 x 100 m safety line/strap on reel.
Extra info	Fire blanket. Gasbottle locker with drain. 2 x Stainless steel gas hoses (2020). 4 x Smoke detector (2018).

RIGGING

Rigging	ketch-cutter
Standing rigging	wire
Brand mast	2 x Sparlight (2 x Proctor boom / giek / Baum)
Material mast	aluminium
Spreaders	Main mast : 2 sets of spreaders and diamond stay in mainmast and a single set of spreaders in mizzen mast.
Mainsail cover	with Lazy Jacks
Battcars	Frederiksen



Fully battened mainsail	Gowen Sails (cleaned & serviced in 2015 - in good condition).
Main staysail	Gowen Sails
Fisherman staysail	1 x Gowen Sails Fisherman's staysail (cleaned & serviced in 2015).
Mizzen	Gowen Sails (cleaned & serviced in 2015 - in good condition).
Mizzen sailcover	yes
Jib	Spare Gowen Sails Furling Jib (cleaned & serviced in 2015)
Jib I	De Boer Sails : Furling Cutter Jib (2015 - as new)
Genoa	Spare Gowen Sails Furling Genoa (cleaned & serviced in 2015)
Genoa furler	Profurl Titanium (2001) with Wrapstop (2025).
Genoa cover	& Cutter Jib cover - both in Grey (2019).
Cutter furler	Profurl Titanium (2001)
Gennaker	With a snuffer (old).
Yankee	De Boer Sails (2015 - as new).
Trysail	Gowen Sails (cleaned in 2015).
Stormjib	Gowen Sails (cleaned & serviced in 2015).
Reefing System	slabreefing
Boomvang	tackle
Primary sheet winch	1 x Lewmar 30 2-speed (2020) - for the mizzen sheet.
Genoa sheetwinches	2 x Lewmar 46ST 2-speed (2020) - for Yankee & 2 x Lewmar 42ST 2-speed (2020) - for Cutter-Jib.
Halyard winches	1x Lewmar 30ST 2-speed (2020) and 2 x Lewmar 10 1-speed (2020) - mizzen mast.
Reefing winch	2 x Lewmar 16ST 1-speed (2020) - for both furlers and 2 x Lewmar 8 1-speed - on main sail boom.
Spi-pole	aluminium 2 x
Extra info	1 x Twin Jib (1+2 - both with removable furler).
Extra info	Winches : 1 x Lewmar 30 2-speed (2020) & 1 x Lewmar 10 1-speed (2020).



ALAN PAPE 46 KETCH



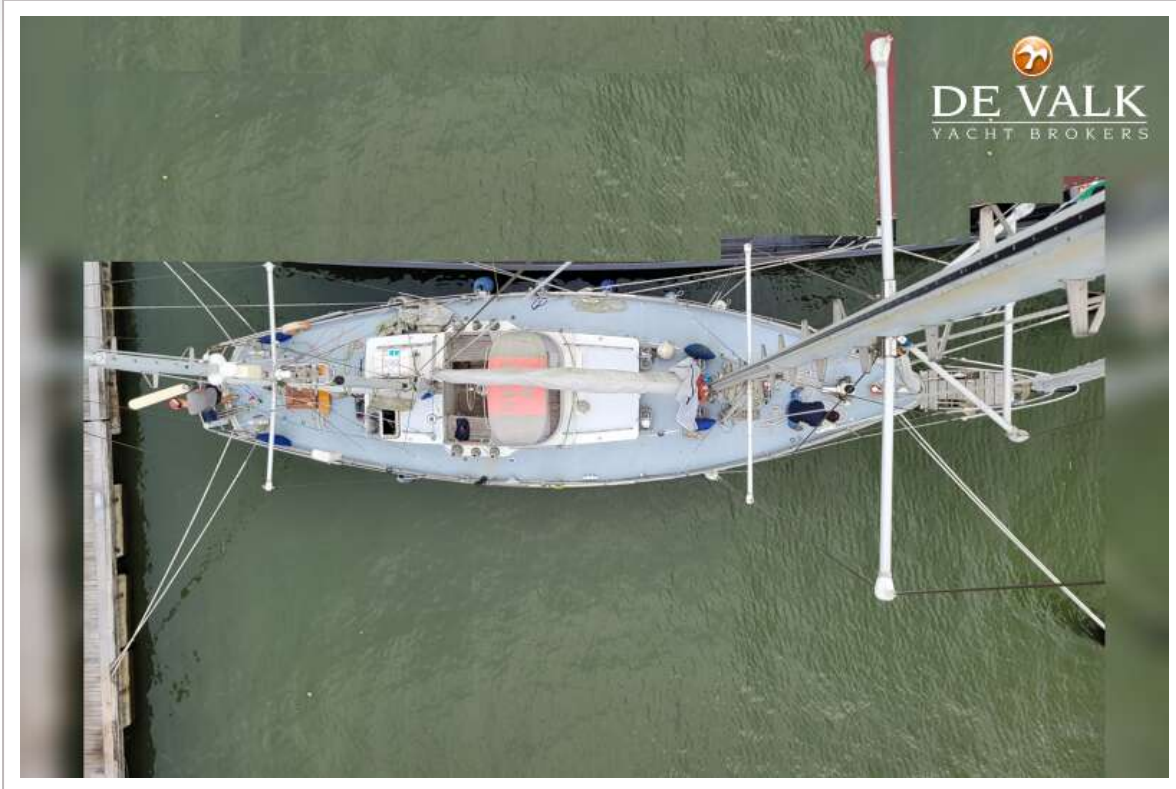
ALAN PAPE 46 KETCH



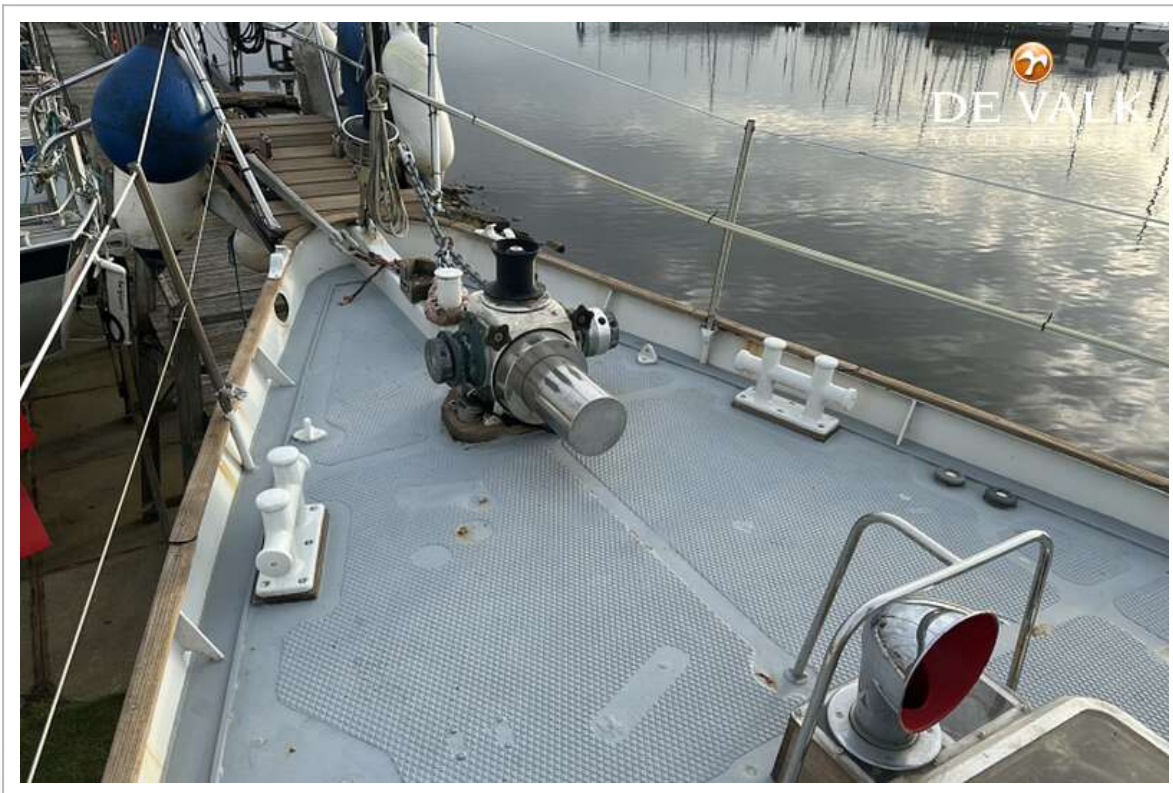
ALAN PAPE 46 KETCH



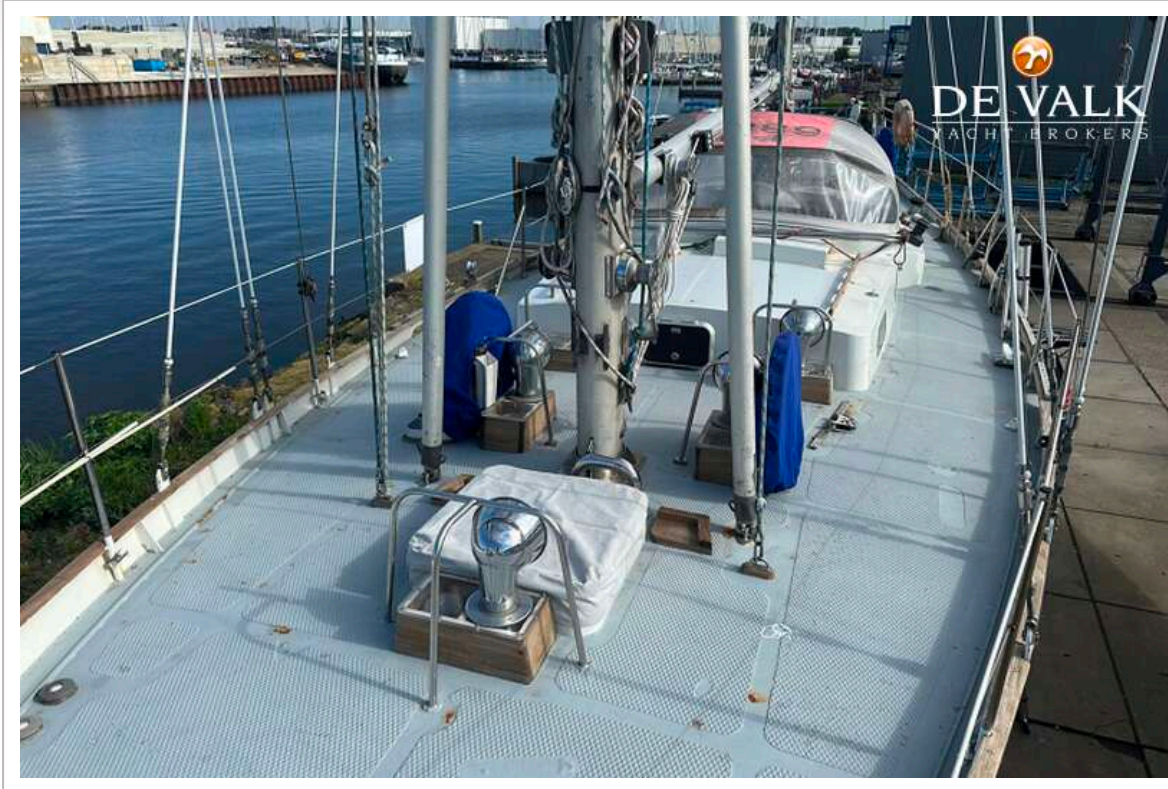
ALAN PAPE 46 KETCH



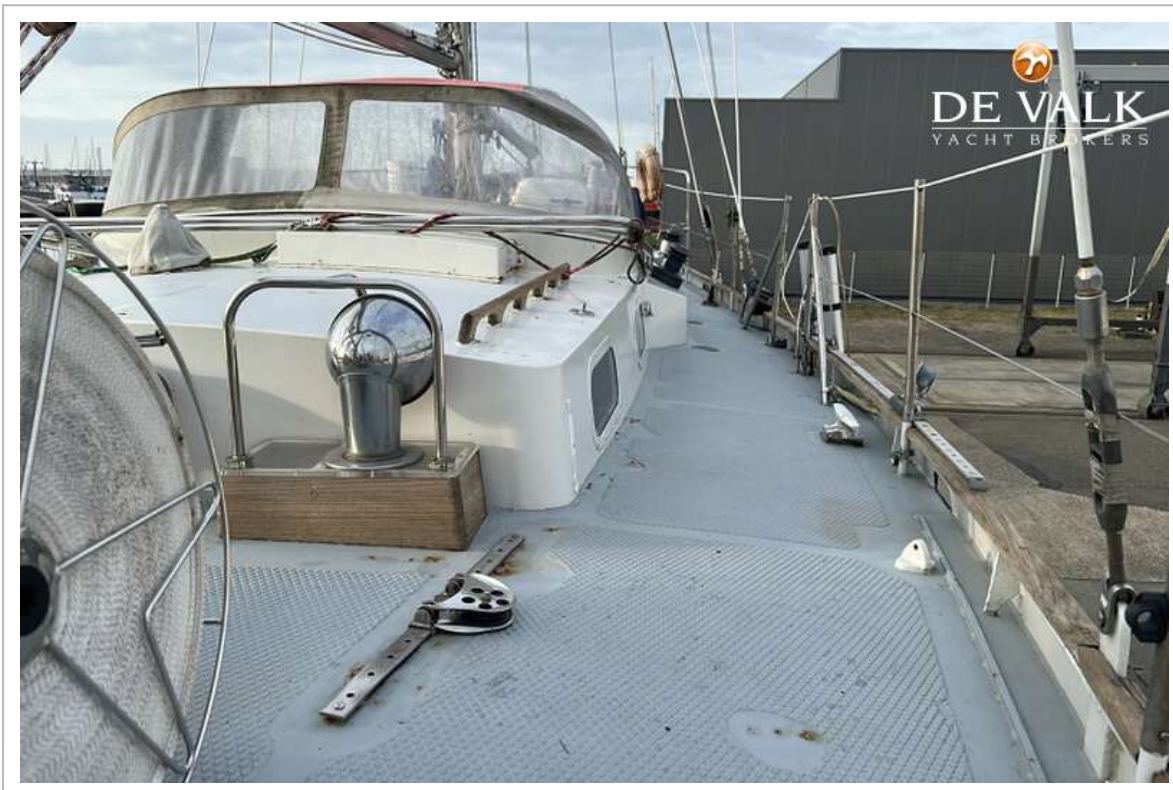
ALAN PAPE 46 KETCH



ALAN PAPE 46 KETCH



ALAN PAPE 46 KETCH



ALAN PAPE 46 KETCH



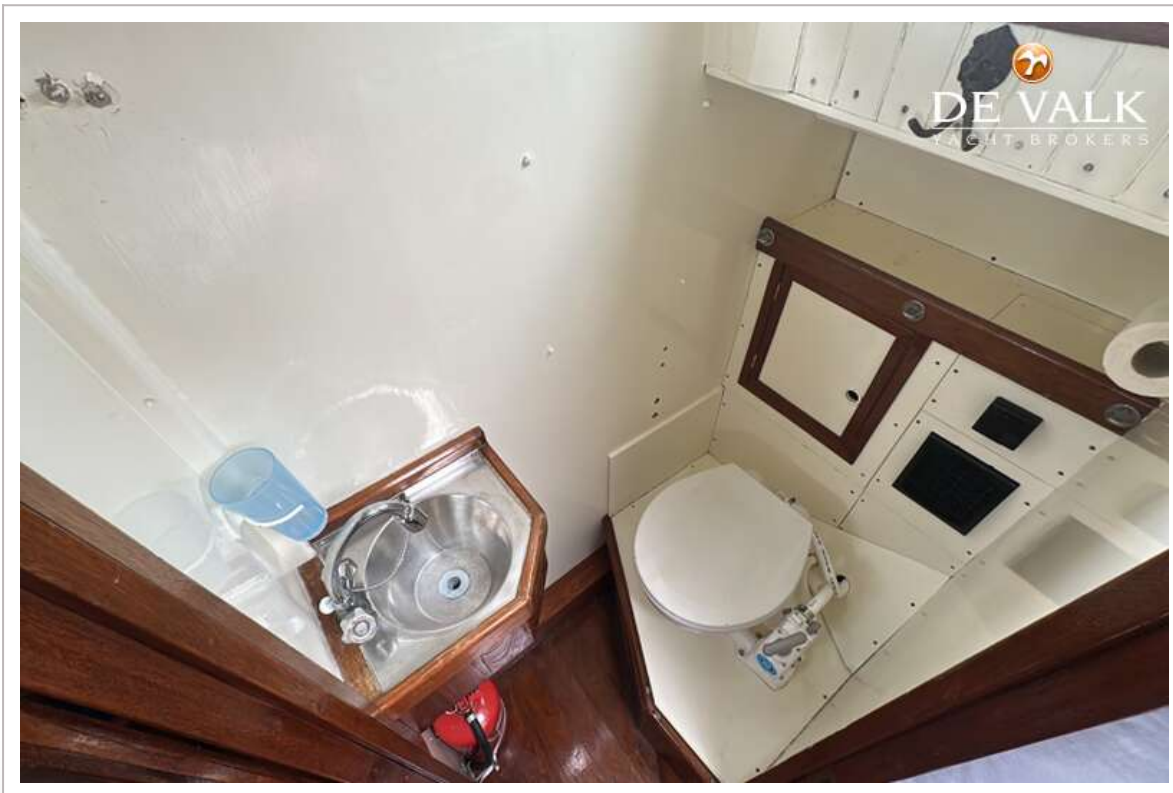
ALAN PAPE 46 KETCH



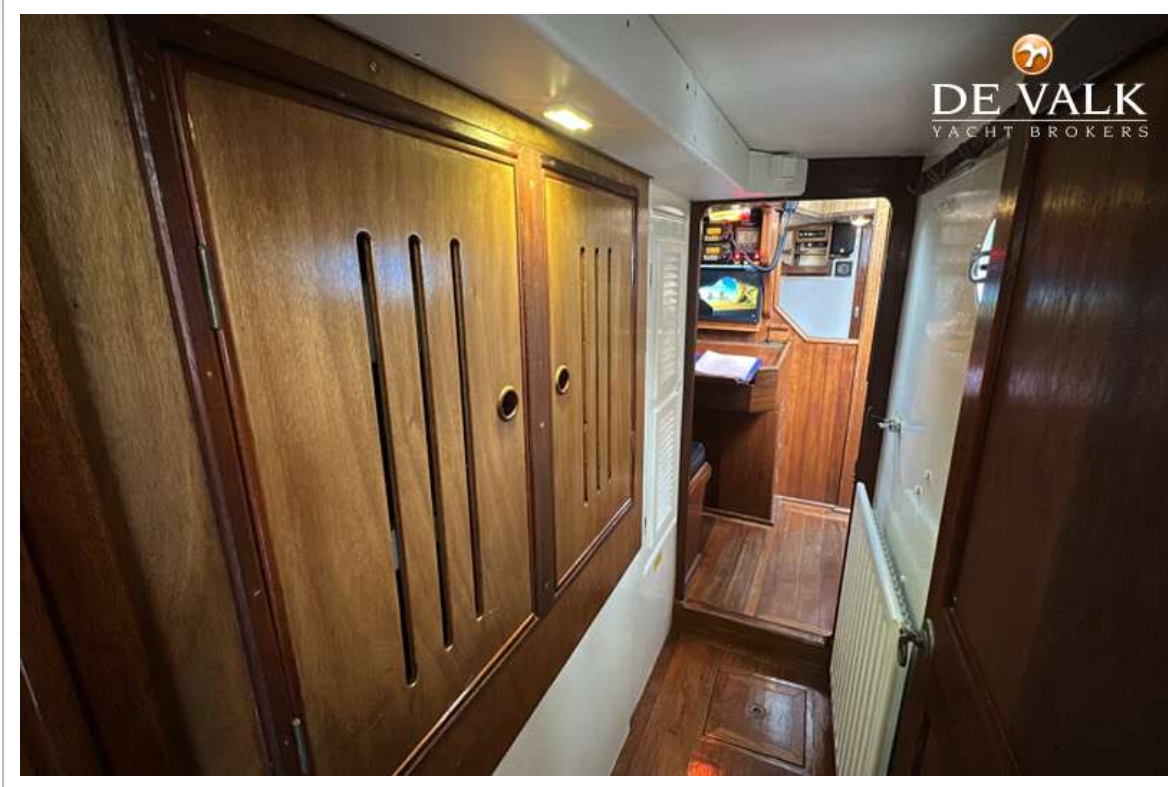
ALAN PAPE 46 KETCH



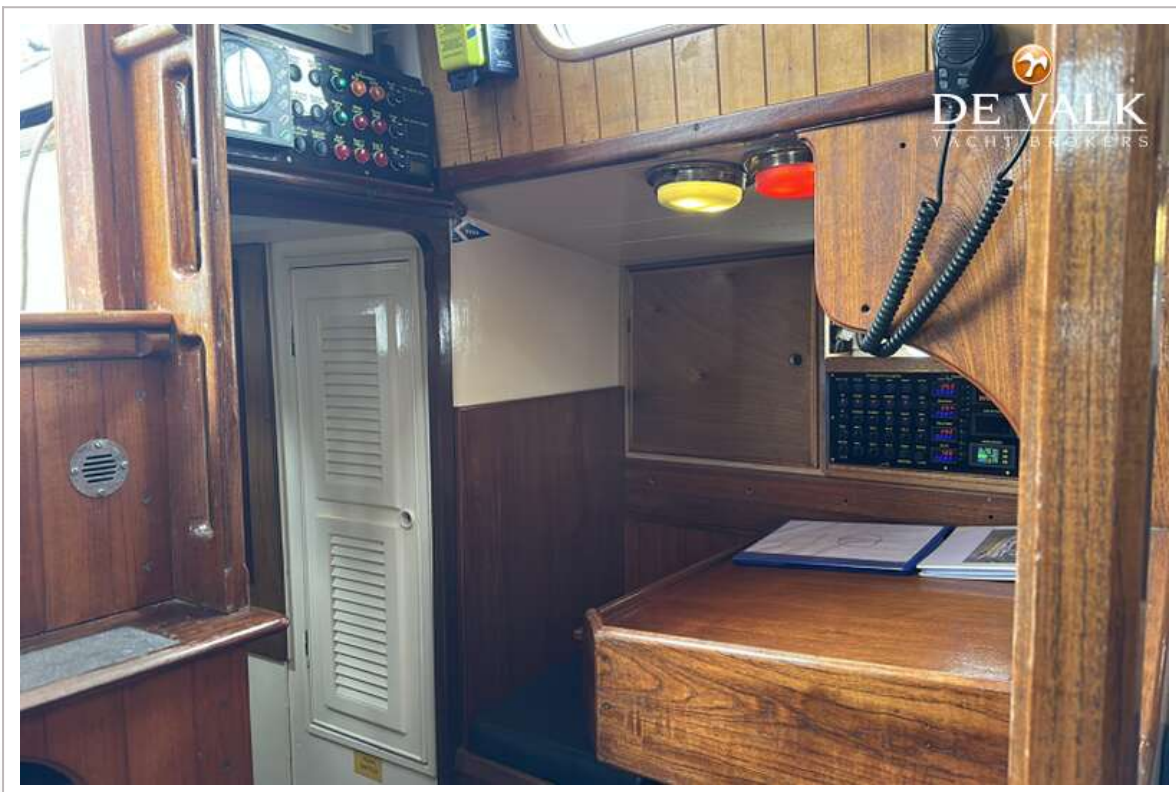
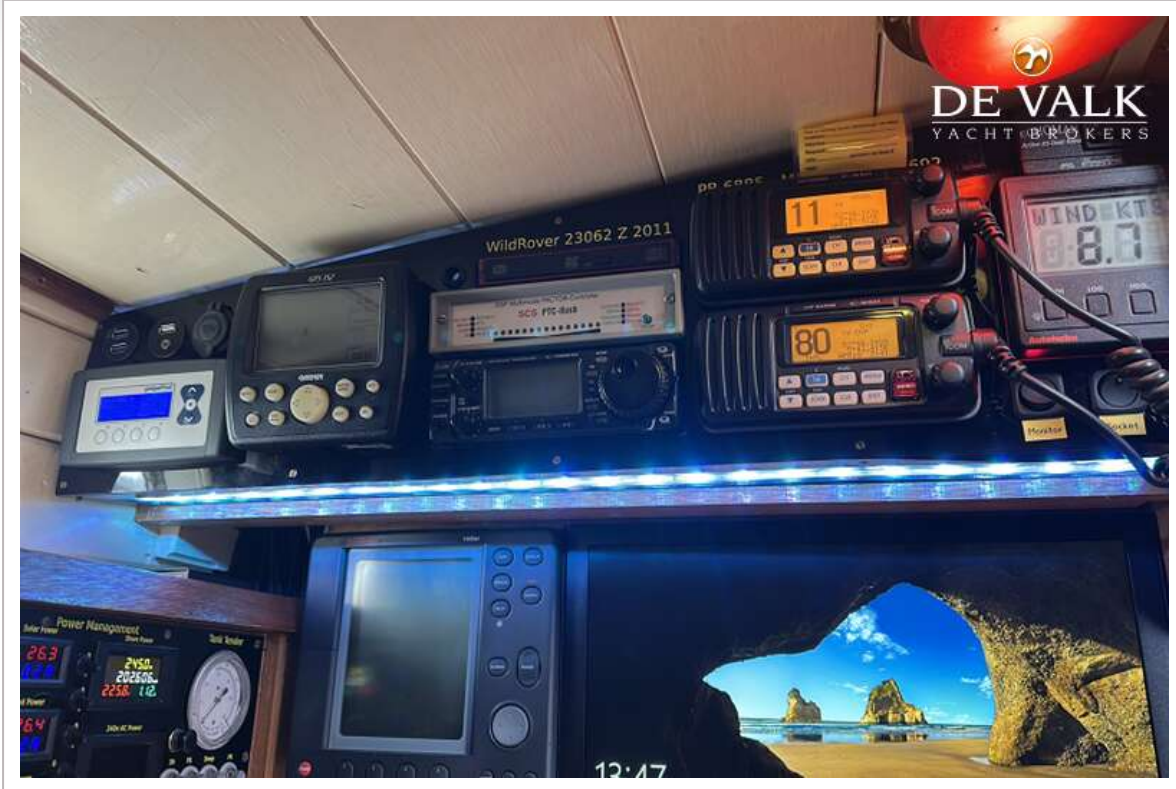
ALAN PAPE 46 KETCH



ALAN PAPE 46 KETCH



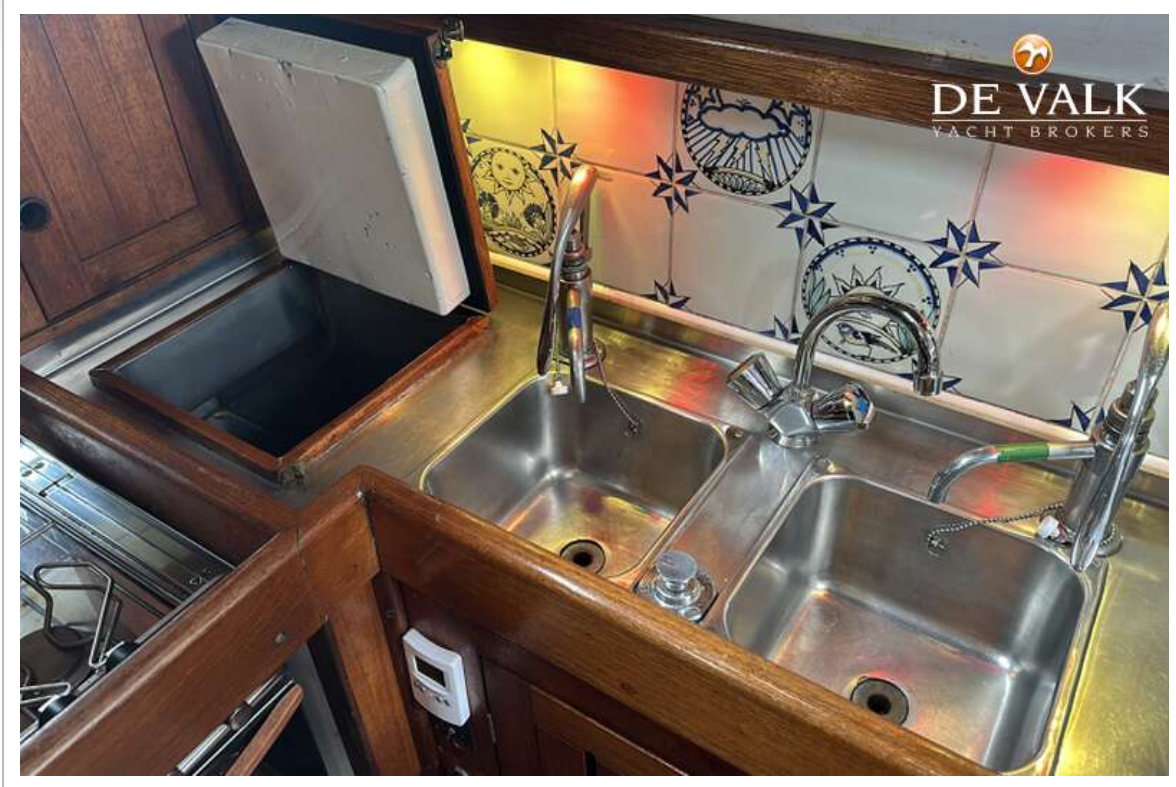
ALAN PAPE 46 KETCH



ALAN PAPE 46 KETCH



ALAN PAPE 46 KETCH



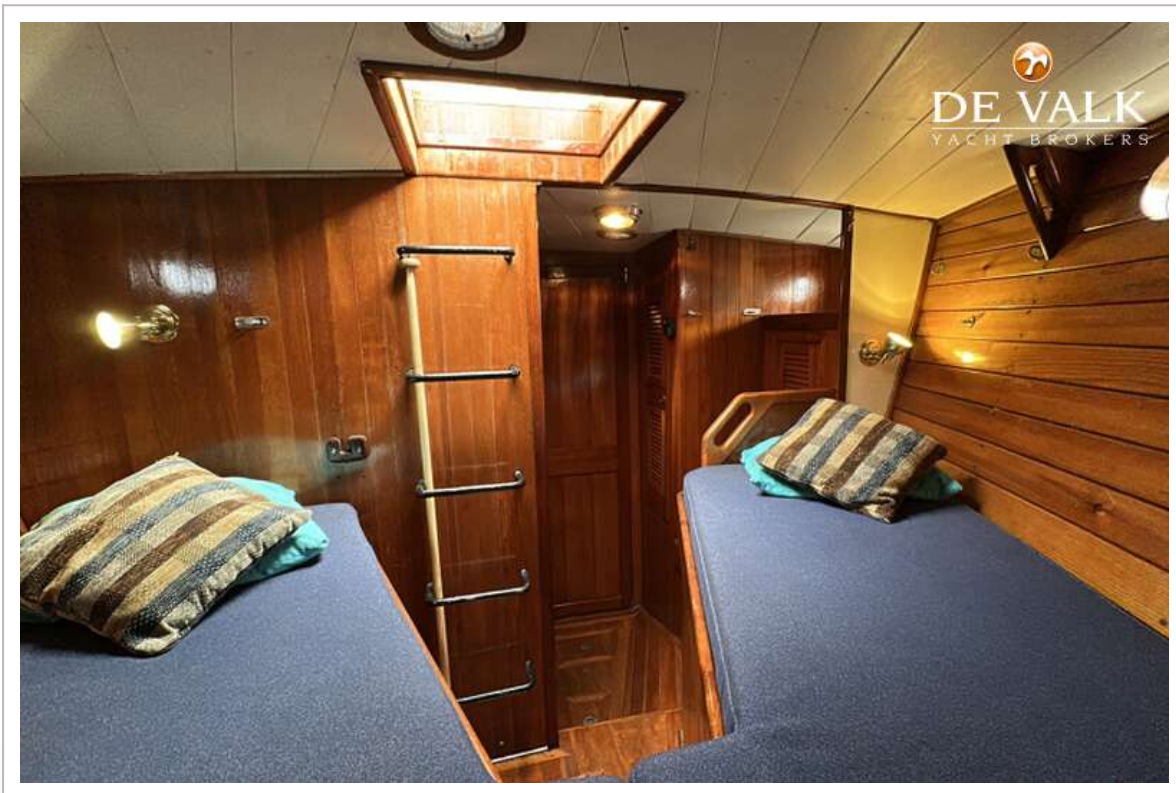
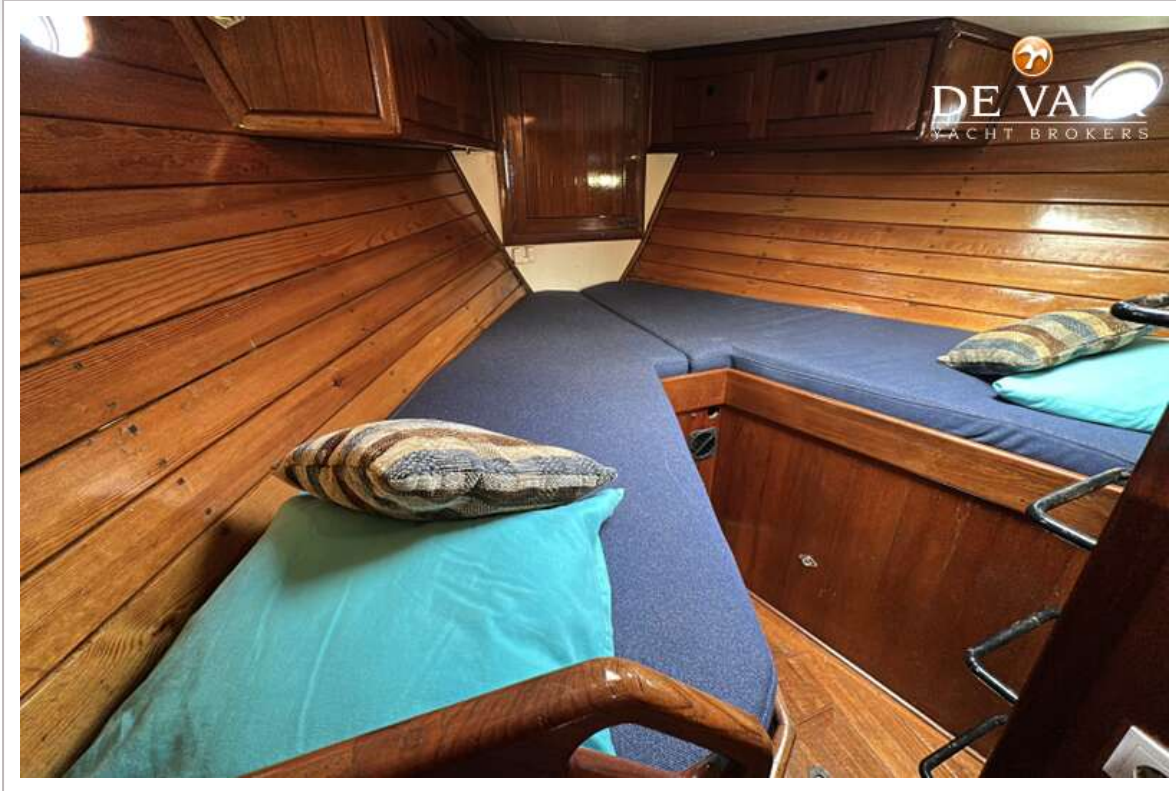
ALAN PAPE 46 KETCH



ALAN PAPE 46 KETCH



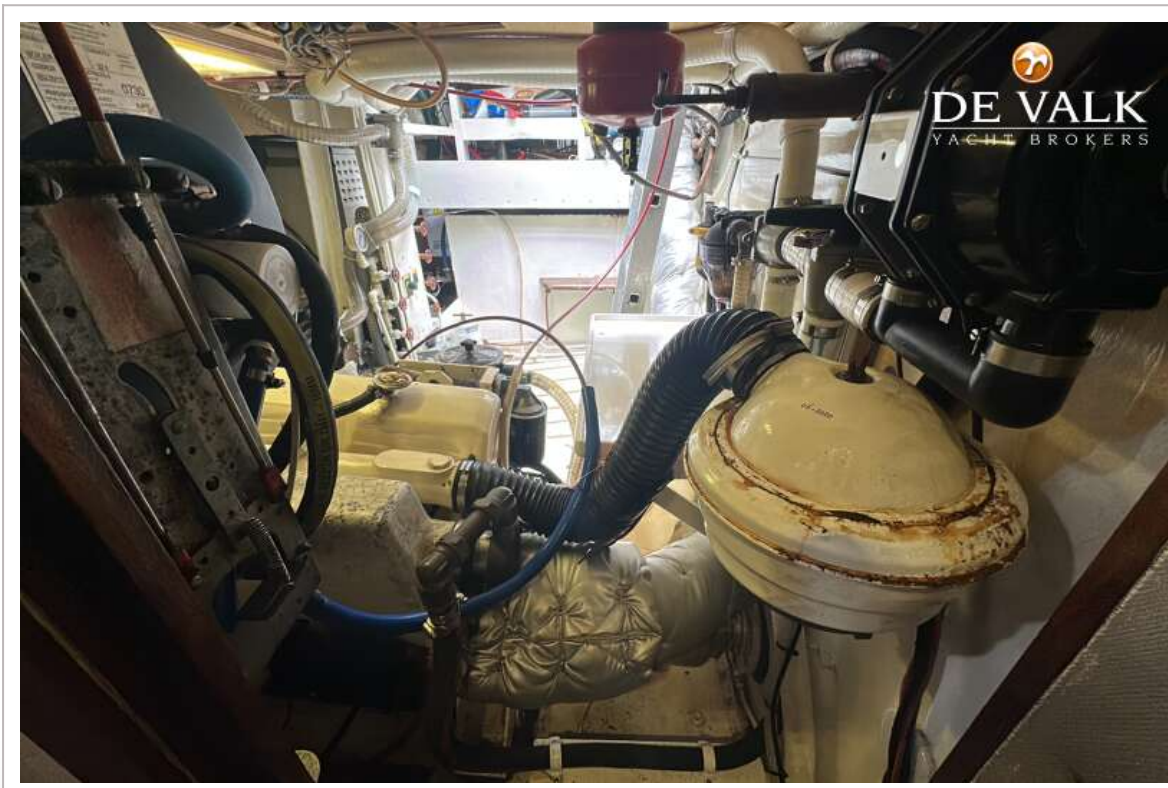
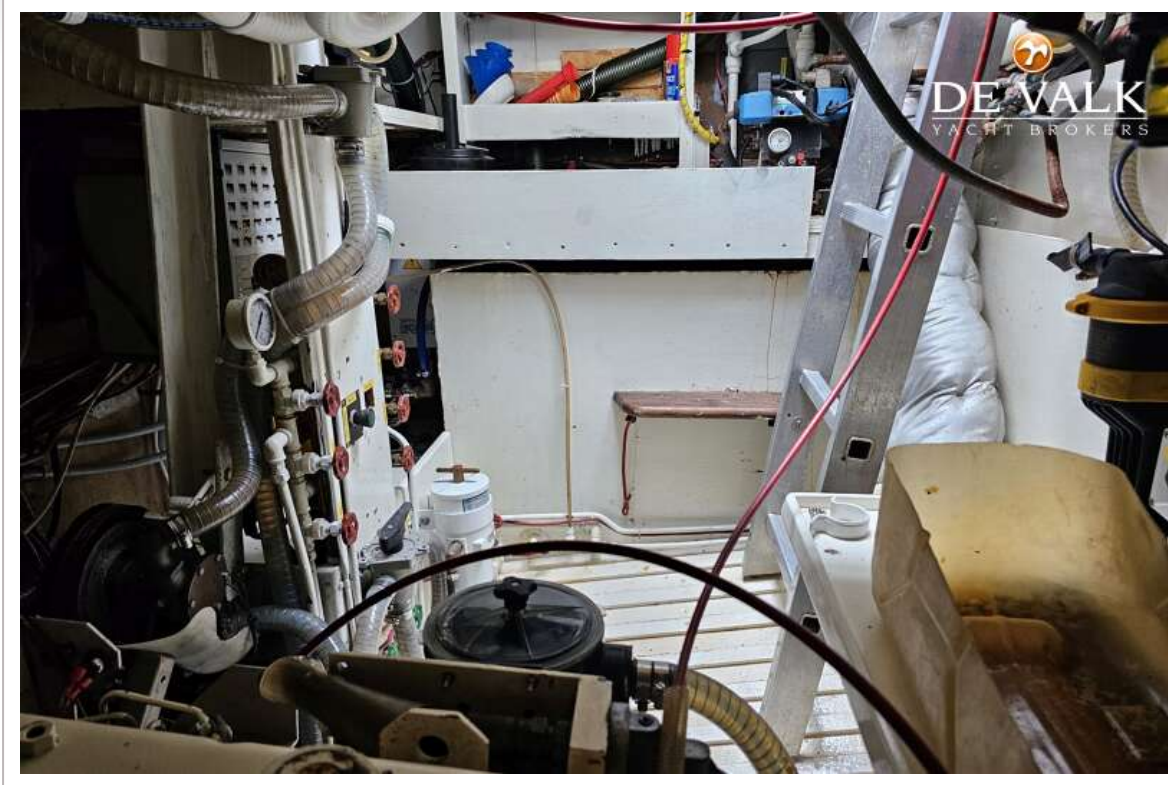
ALAN PAPE 46 KETCH



ALAN PAPE 46 KETCH



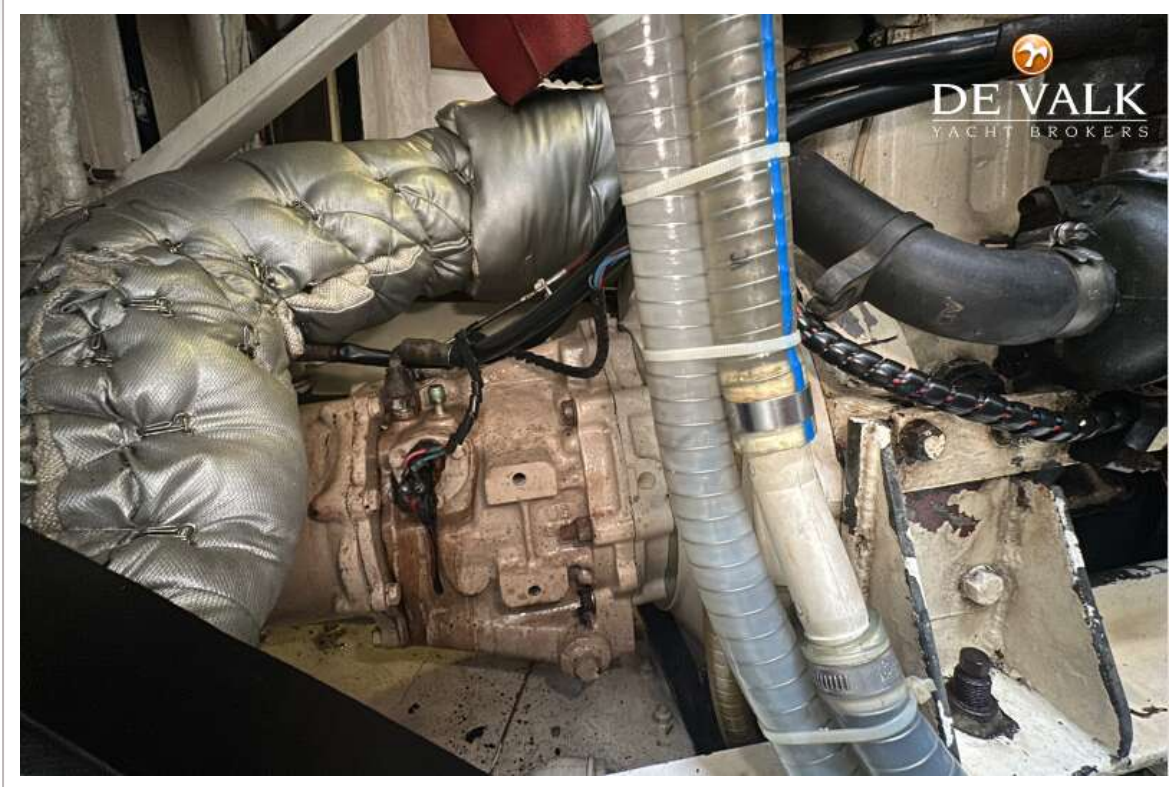
ALAN PAPE 46 KETCH



ALAN PAPE 46 KETCH



ALAN PAPE 46 KETCH




DE VALK
YACHT BROKERS

