



DE VALK
YACHT BROKERS



BENETEAU OCEANIS 38 CRUISER



DE VALK
YACHT BROKERS

BENETEAU OCEANIS 38 CRUISER

BROKER'S COMMENTS

This 38 Cruiser version, with lifting keel, offers three partitioned cabins. Thanks to the possibility of taking out the partition of the front cabin to make it completely open. A large kitchen faces the lounge area, which can seat up to six people. She offers a performance to habitability ratio second to none on this size of cruising yacht with her wide cockpit and single-handed layout. Well equipped with very little use and plenty of practical adjustments for comfort and safety. Available in South Spain.

Jörg Hellmich

SPECIFICATIONS

Dimensions	11.50 x 3.99 x 1,40 / 2.40 (m)	Builder	Beneteau Group
Built	2015	Cabins	3
Material	GRP	Berths	7
Engine(s)	1 x Yanmar 3YM30AE diesel	Hp/Kw	29.00 (hp), 21.34 (kw)
Asking price	€ 139.000 (VAT Paid)	Lying	at sales office

CONTACT

Sales office	De Valk Almeria	Telephone	+34 950 497 825
Address	Puerto de Almerimar Darsena de la Batea Almerimar ES	E-mail	almeria@devalk.nl

DISCLAIMER

These particulars are given in good faith as supplied but cannot be guaranteed.



BENETEAU OCEANIS 38 CRUISER

GENERAL

Model	BENETEAU OCEANIS 38 CRUISER
Type	sailing yacht
LOA (m)	11,50
LWL (m)	10,72
Beam (m)	3,99
Draft (m)	2,40
Draft min (m)	1,40
Air draft min (m)	16,55
Headroom (m)	1,95
Year built	2015
Builder	Beneteau Group
Country	France
Designer	Finot
Displacement (t)	8,6
Ballast (tonnes)	1,79
CE norm	A
Hull material	GRP
Hull colour	white
Hull shape	round-bilged
Keel type	lifting keel
Superstructure material	GRP
Deck material	GRP
Deck finish	non-skid moulded in
Superstructure deck finish	non-skid moulded in
Cockpit deck finish	teak
Antifouling (year)	2024
Window frame	aluminium
Window material	perspex
Deckhatch	2 x Lewmar
Portholes	aluminium 4 extra in cockpit



BENETEAU OCEANIS 38 CRUISER

Fuel tank (litre)	polyethylene 130
Level indicator (fuel tank)	Gauge
Freshwater tank (litre)	polyethylene 130 + 200
Level indicator (freshwater)	Gauge
Blackwater tank (litre)	polyethylene 80
Blackwater tank extraction	deck extraction + pump
Wheel steering	cable steering Twin helm
Emergency tiller	yes
More info on hull	In like new conditions
Extra info	Sail Away Package incl.
Extra info	Very little use

ACCOMMODATION

Cabins	3
Berths	7
Interior	oak Bright
Layout	3 cabin version - Cruiser with sep. shower and add. toilet
Floor	wood
Open cockpit	yes
Saloon	Convertible
Headroom saloon (m)	1,95
Heating	diesel ducted hot air Eberspächer
Chart table	yes
Galley	Long shape
Countertop	wood
Sink	stainless steel Single
Cooker	calor gas Eno 2 burner (dismountable)
Oven	Eno
Fridge	Vitrifridge
Freezer	Compartment in fridge
Hot water system	220V + engine 25 L. Boiler



BENETEAU OCEANIS 38 CRUISER

Water pressure system	electrical Jabsco
Hot water tap	yes
Crockery	yes
Owners cabin	double bed Forward
Bed length (m)	2,00 x 1,50
Wardrobe	shelves
Guest cabin 1	double bed Aft Port
Bed length (m)	2,08 x 1,50
Wardrobe	shelves
Toilet	shared
Toilet system	electric Quietflush
Wash basin	at the toilet
Shower	shared
Extra info	Extra 2nd separate shower
Guest cabin 2	double bed Aft STB
Bed length (m)	2,00 x 1,50
Wardrobe	shelves
Toilet	en suite
Toilet system	manual
Wash basin	at the toilet
Extra info	Indirect LED lighting
Extra info	Chine Moka upholstery

MACHINERY

No of engines	1
Make	Yanmar
Type	3YM30AE
HP	29
kW	21.34
Fuel	diesel
Year installed	2015



BENETEAU OCEANIS 38 CRUISER

Maximum speed (kn)	7,5
Cruising speed (kn)	6,5
Consumption (l/hr)	6
Range (nm)	120
Engine hours	700
Engine cooling system	freshwater heat exchanger
Drive	sail-drive
Saildrive seal	yes
Engine controls	bowden cable
Gearbox	hydraulic
Bowthruster	electric Quick
Exhaust	watercooled
Propeller type	folding SPW Varioprop
Propeller blades	4
Propeller shaft material	stainless steel
Shaft lubrication	water
Manual bilge pump	yes
Electric bilge pump	+ spare pump
Electrical installation	12V system
Start battery	1 x 12V / 85 Ah Lead (2022)
Service battery	1 x 12V / 200 Ah Victron Lithium (2022)
Bowthruster battery	2 x 12V / 55 Ah AGM (2015)
Battery monitor	LED / Victron
Battery charger	Victron Orion 12V / 40 Amp
Solar panel	2 x Victron Solar 175W
Diode battery combiners	2 x Victron Solar Charger
Shorepower	with cable 230V
Insulation transformer	yes
Watermaker	Parker LWM-1475 (10L/Hr.) (unused)

NAVIGATION



BENETEAU OCEANIS 38 CRUISER

Compass	2 x Plastimo
Depth sounder	B&G Triton + forwardscan
Log	B&G Triton
Windset	B&G Triton
VHF	B&G V60
VHF handheld	yes
Autopilot	B&G Hydraulic
Rudder angle indicator	B&G Triton
Radar/GPS/plotter	B&G Zeus 9
Wifi antenna	B&G Wifi
Electronic chart(s)	Navionics West Europe
AIS transponder	B&G
Camera	yes
Navigation lights	LED
Extra info	Bluetooth remote control for Autopilot

EQUIPMENT

Sprayhood	yes
Fixed hardtop	Arch
Cockpit cover	yes
Bimini	yes
Cockpit table	Deluxe
Bathing platform	Retractable
Boarding ladder	stainless steel
Gangway	Aluminum
Deck shower	H&c
Anchor	Rocna Vulcan
Anchor chain	50m (10mm) stainless + rope & swivel
Windlass	electrical Quick 1500W
Outboard support	yes
Davits	stainless steel Besenconi (retractable)



BENETEAU OCEANIS 38 CRUISER

Davits controls	manual
Deck crane	manual For outboard
Sea railing	wire
Grab rail (superstructure)	stainless steel
Pushpit	yes
Pulpit	yes
Lifejackets	yes
Safety lines on deck	yes
Horn	air pressure
Fenders	yes
Mooring lines	yes
Spare parts	yes
Tools	yes
Radio	Fusion
Cockpit speakers	yes
Speakers in salon	yes
Clock - barometer	yes
Fire extinguisher	4 units (2kg)
Auto extinguisher system	yes
Extra info	Cockpit lights
Extra info	Cockpit heating outlets
Extra info	Ample add. graprails

RIGGING

Rigging	sloop
Standing rigging	wire Original
Brand mast	Z-Spar
Material mast	aluminium
Spreaders	2 sets
Mainsail	Dacron (original)
Jib	Dacron (original)



BENETEAU OCEANIS 38 CRUISER

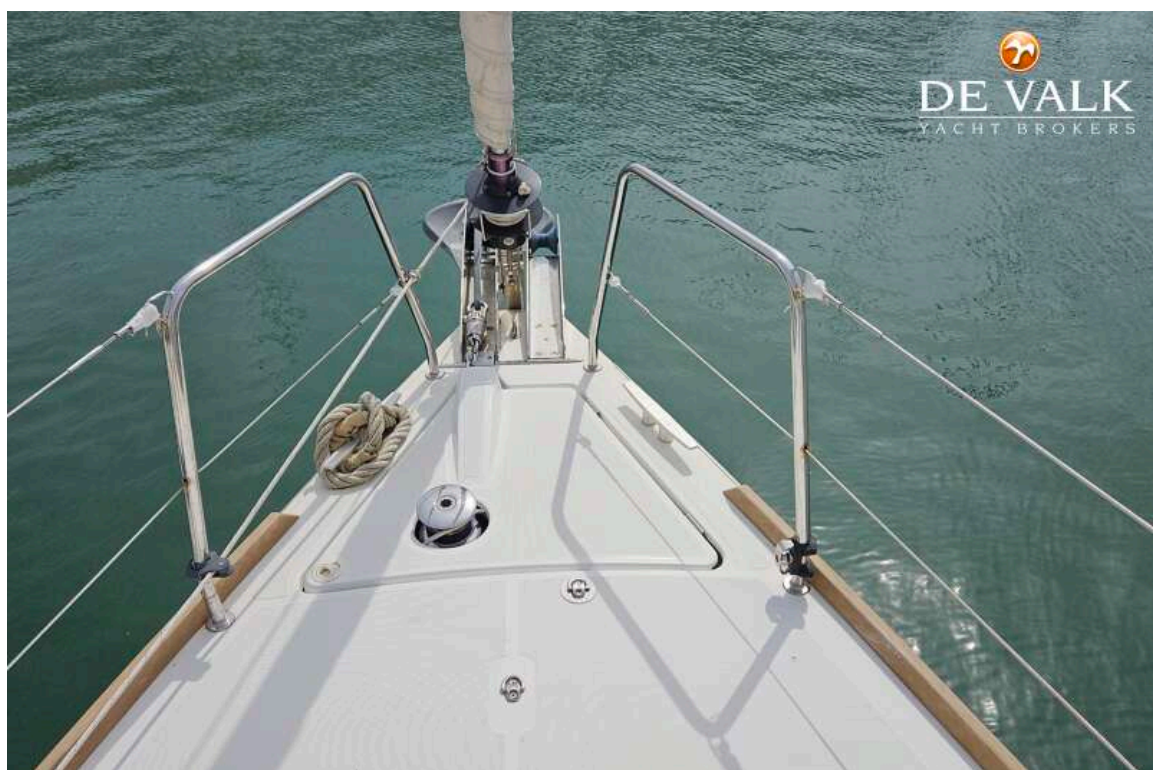
Genoa furler	Facnor
Code Zero	(2020) + furler
Self tacking jib installation	Harken
Reefing System	main in-mast furling
Boomvang	mechanical and tackle Z-spars
Primary sheet winch	Harken H35 STA / 2SP
Secondary sheet winch	Harken H35 STA / 2SP
Genoa sheetwinches	2 x Harken H40 STA / 2SP



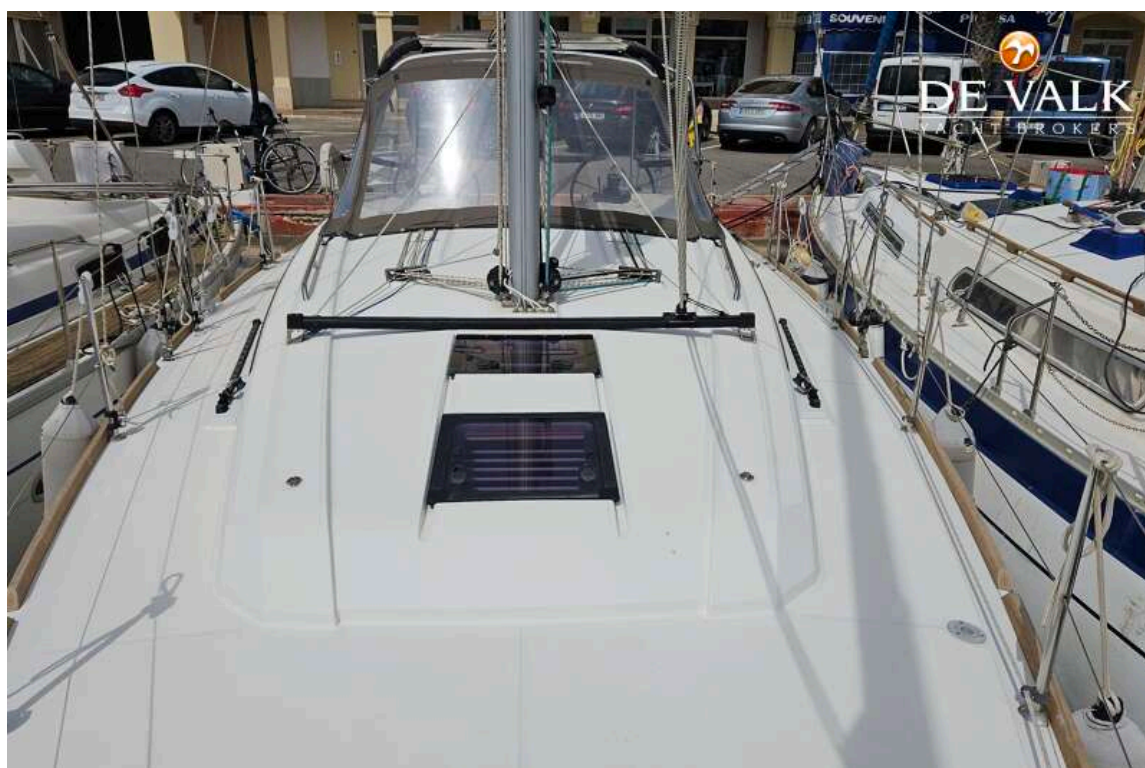
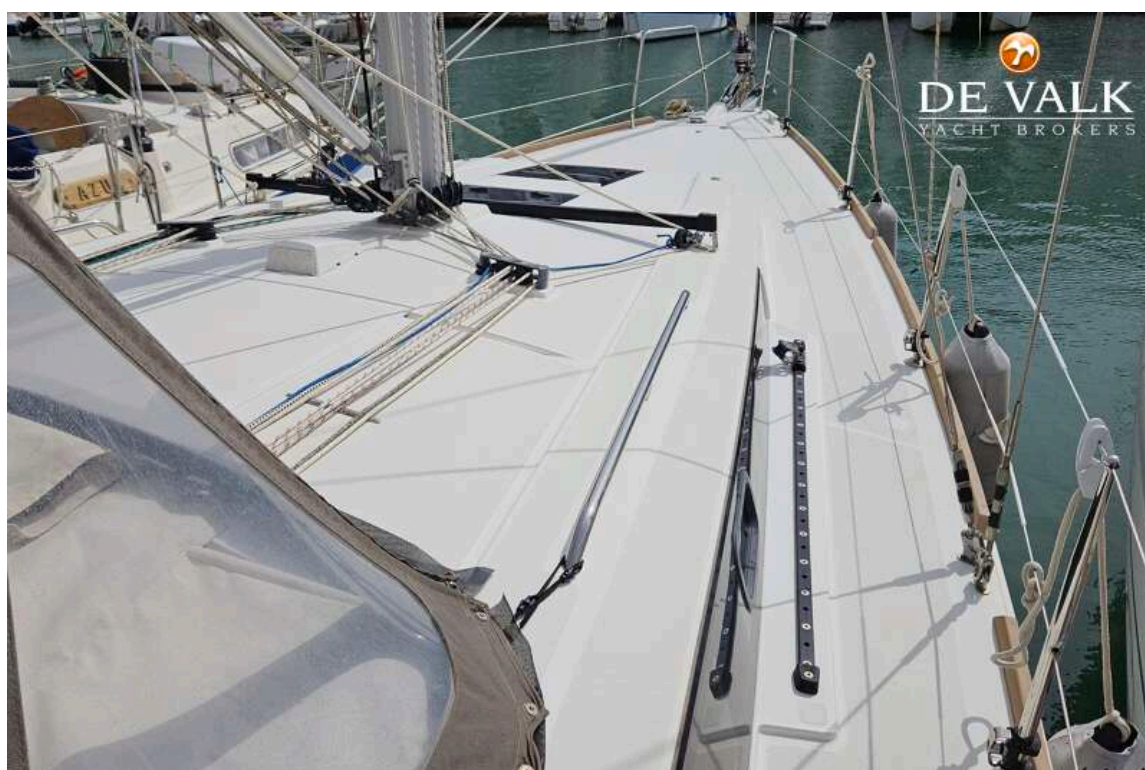
BENETEAU OCEANIS 38 CRUISER



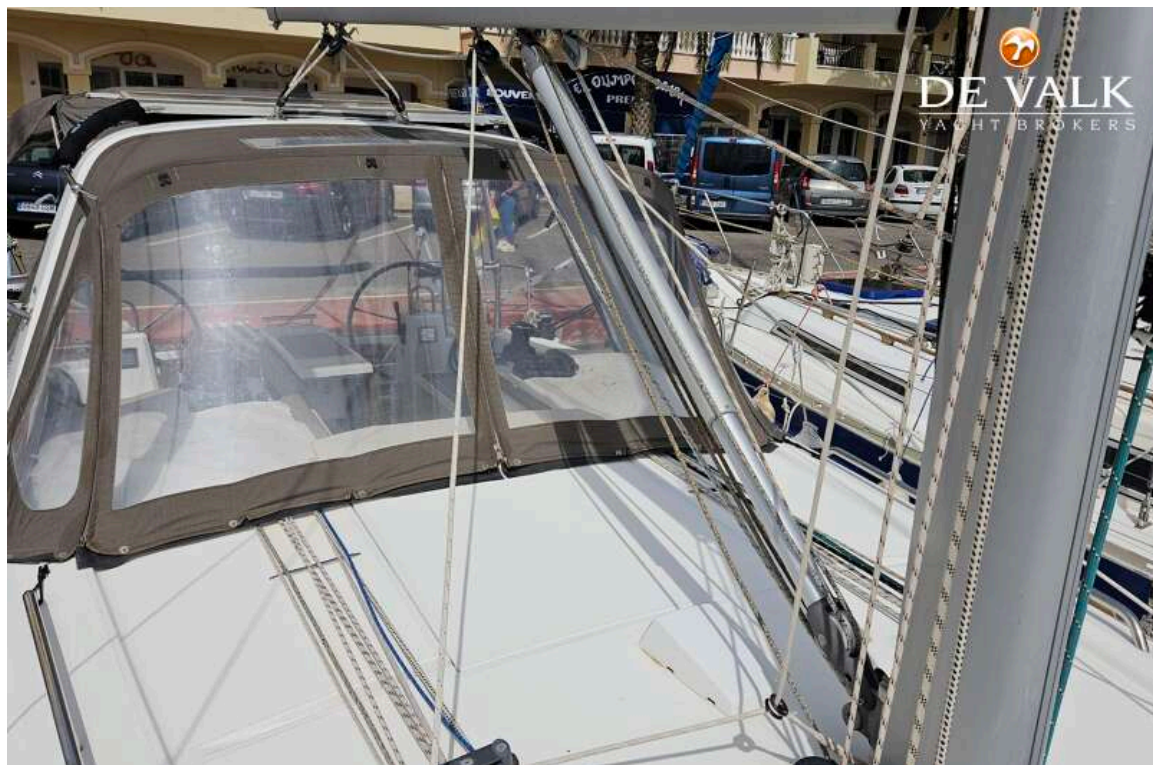
BENETEAU OCEANIS 38 CRUISER



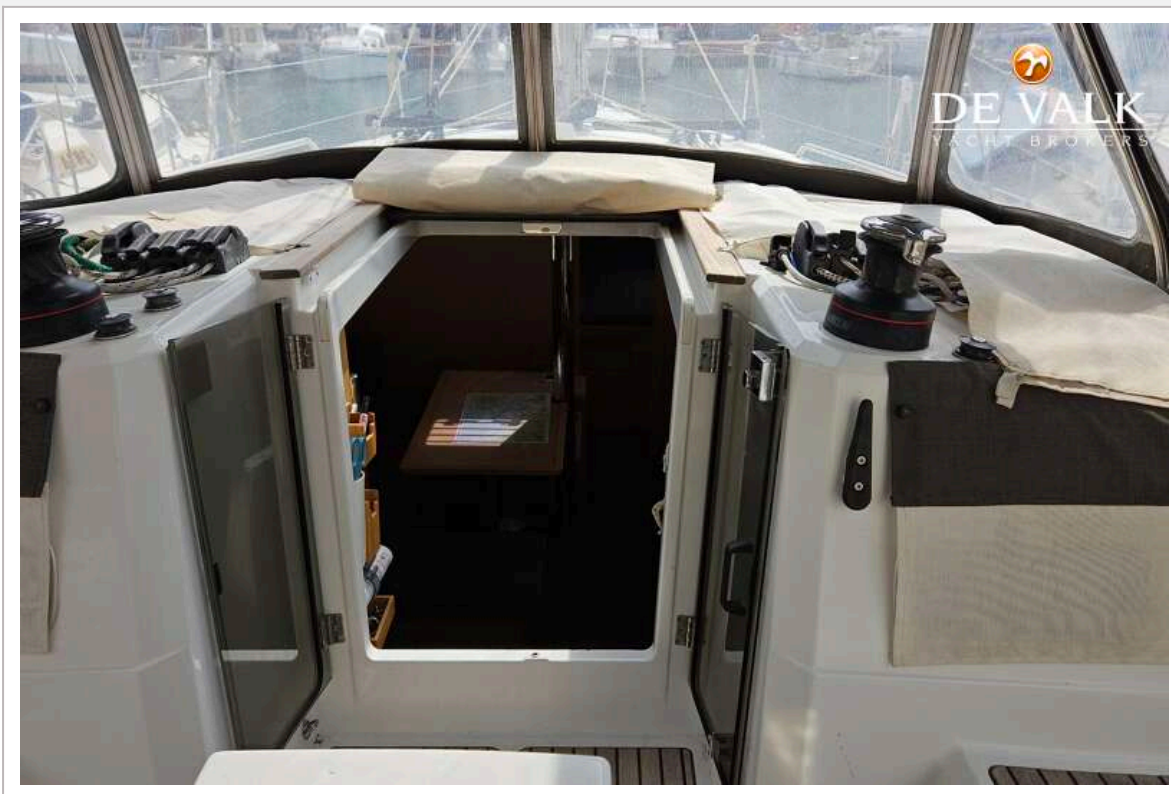
BENETEAU OCEANIS 38 CRUISER



BENETEAU OCEANIS 38 CRUISER



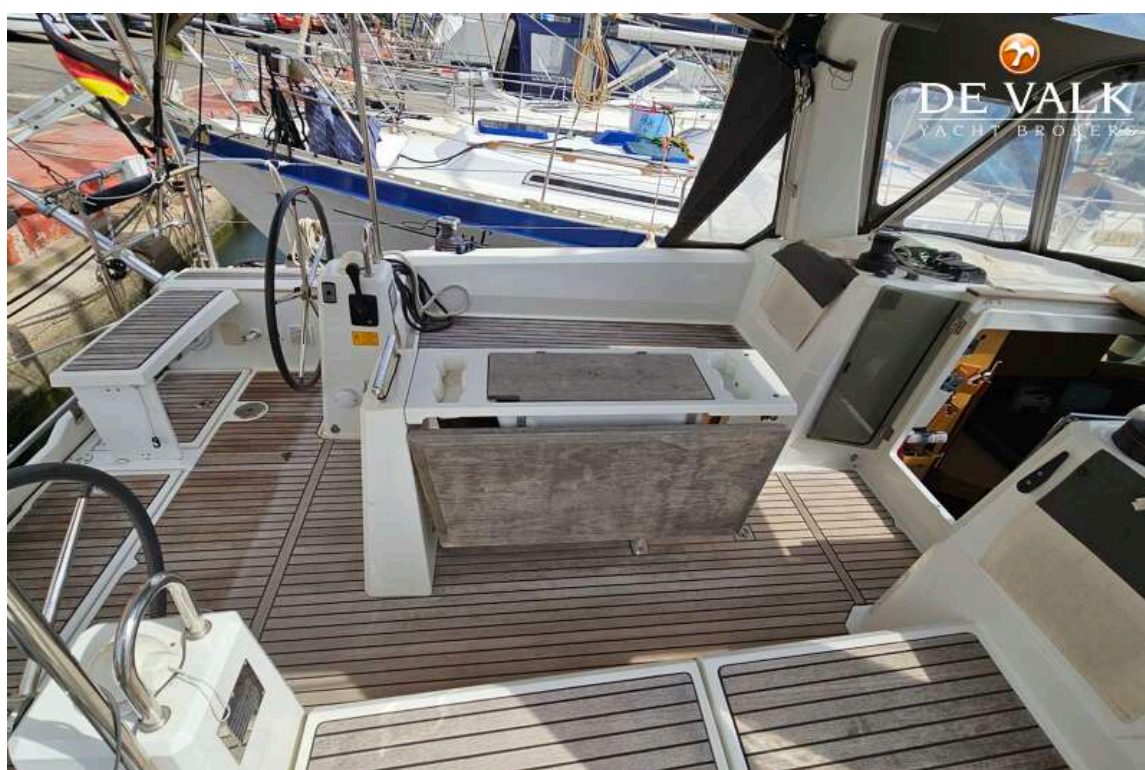
BENETEAU OCEANIS 38 CRUISER



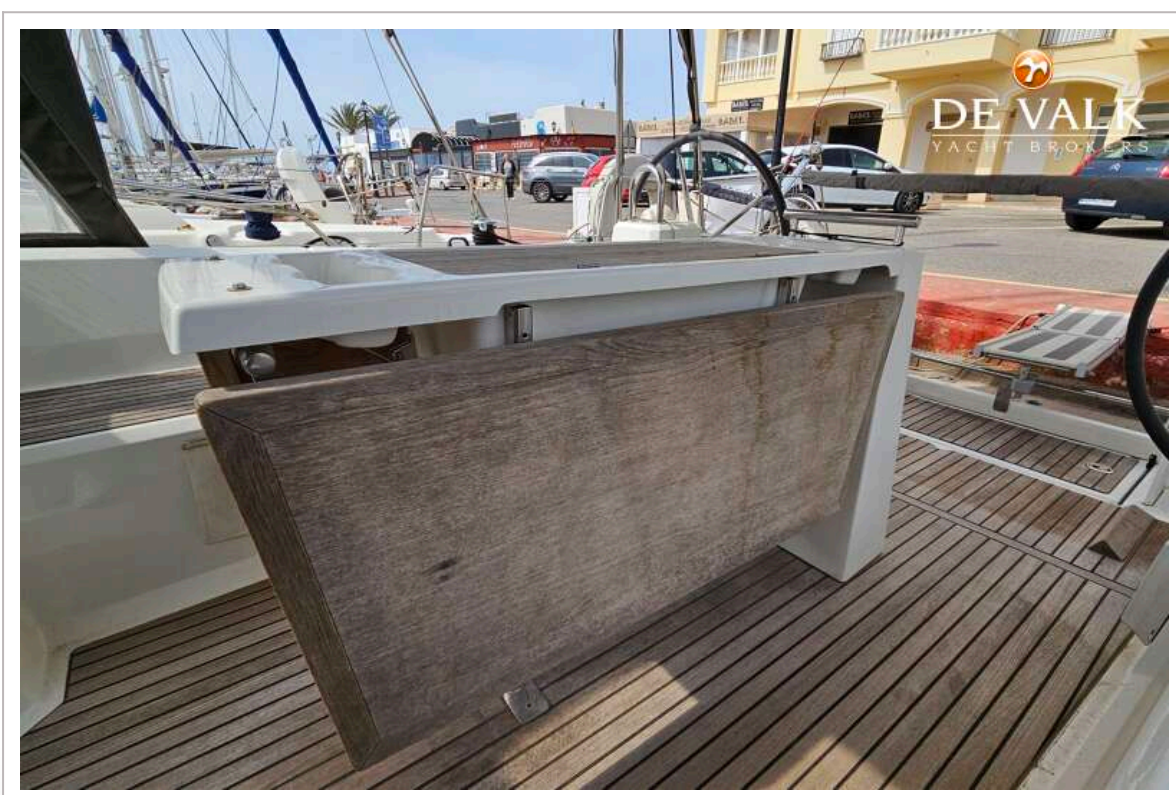
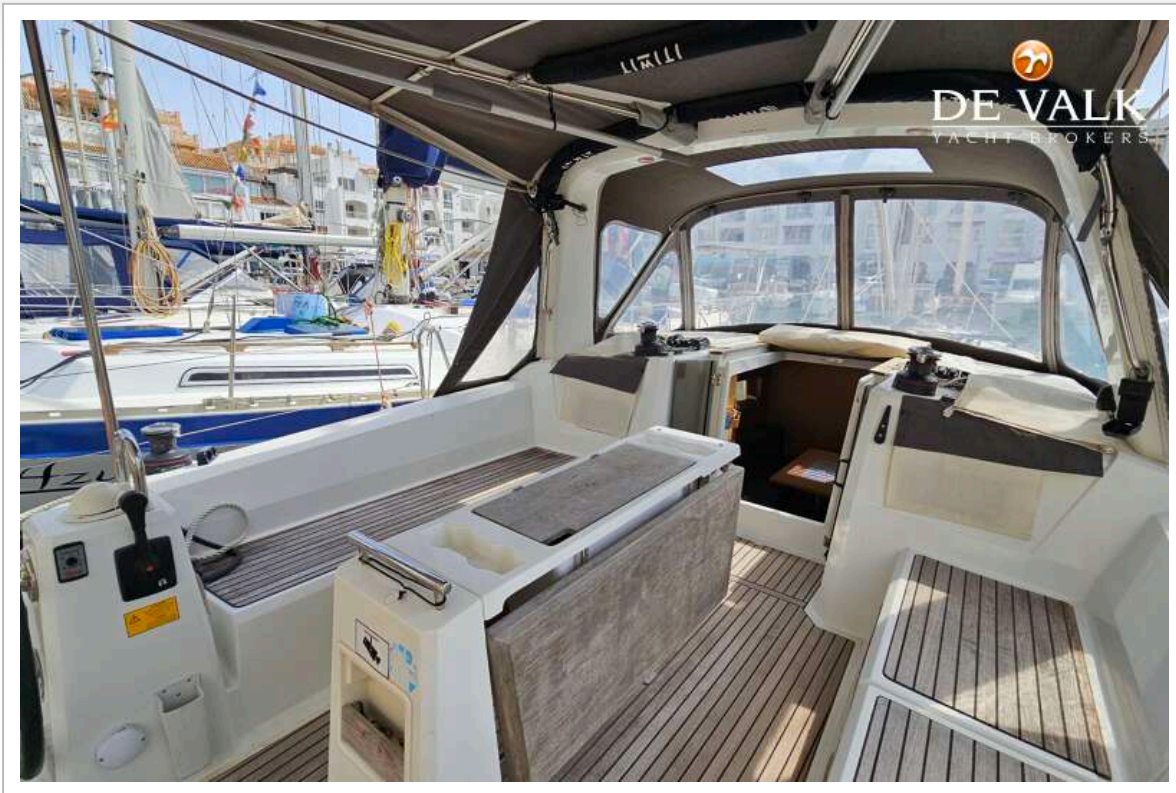
BENETEAU OCEANIS 38 CRUISER



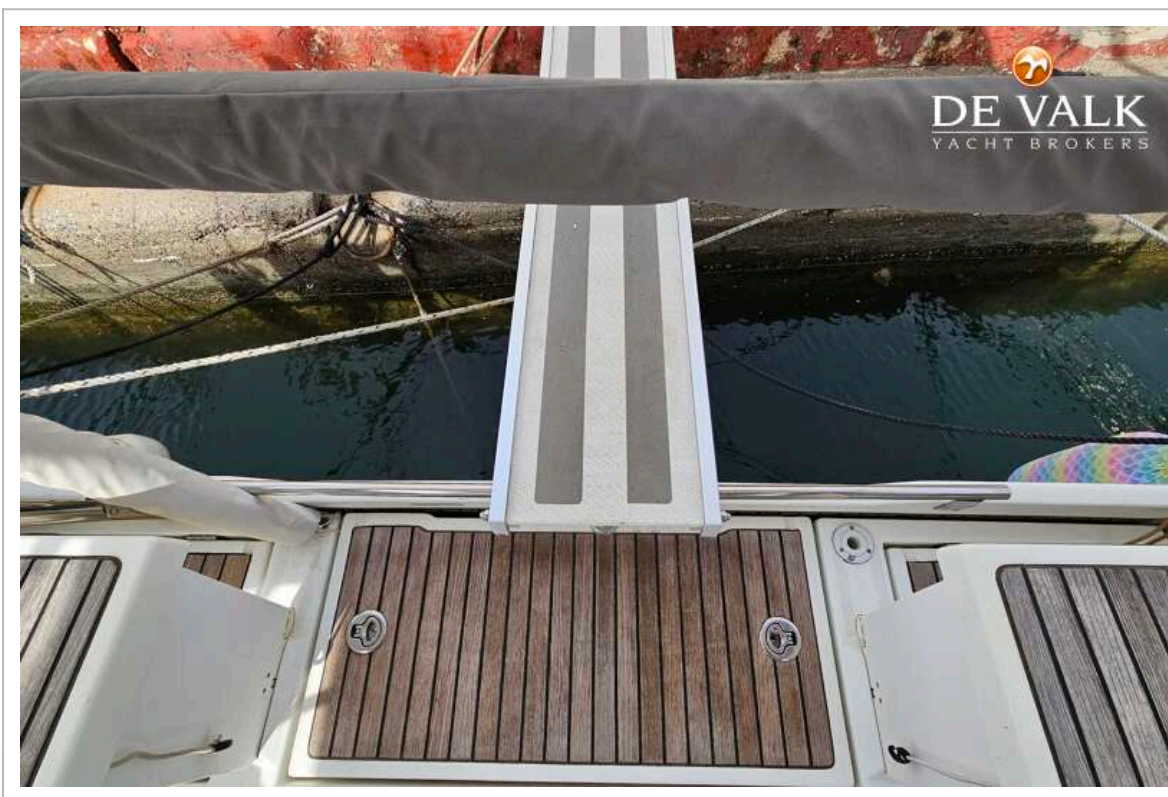
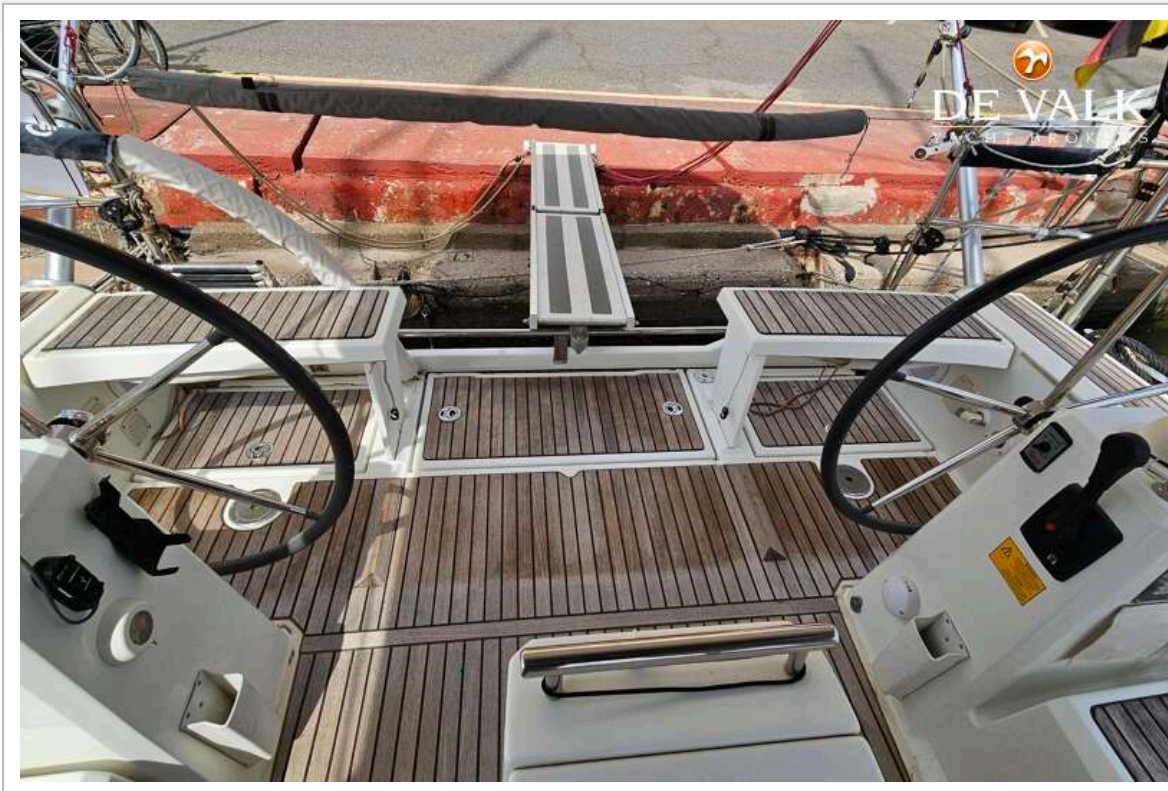
BENETEAU OCEANIS 38 CRUISER



BENETEAU OCEANIS 38 CRUISER



BENETEAU OCEANIS 38 CRUISER



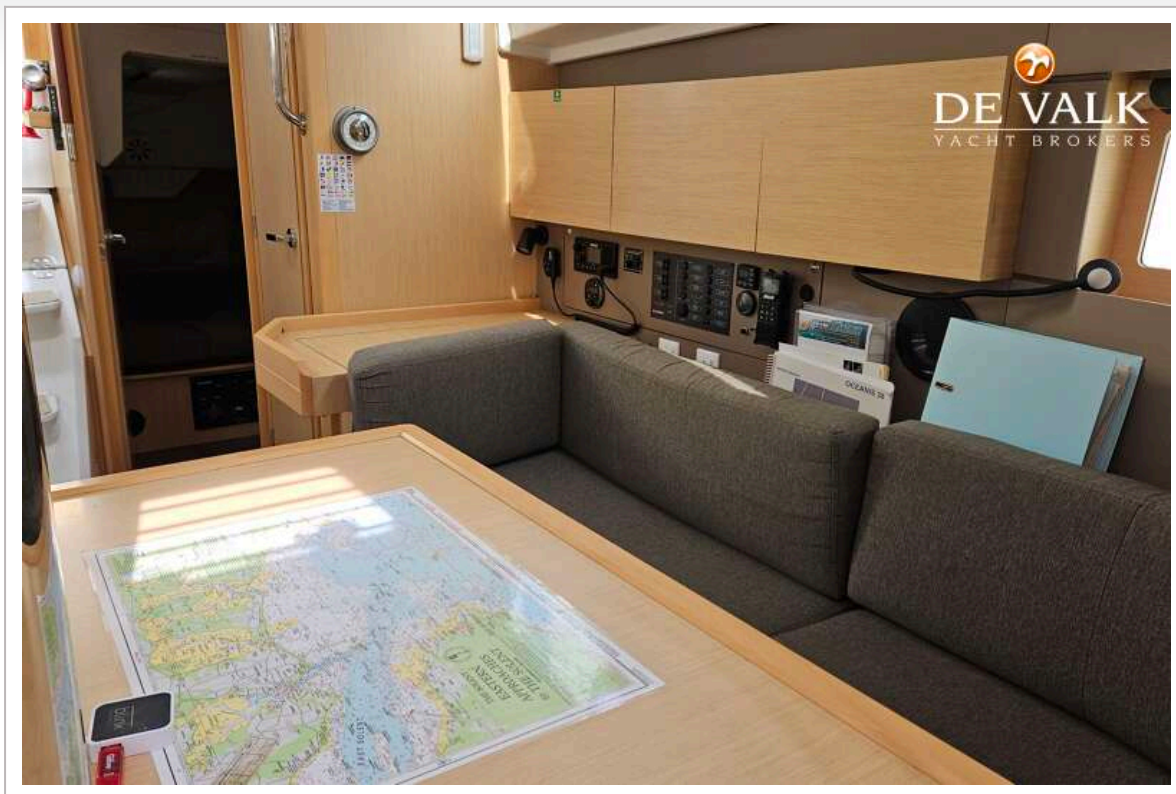
BENETEAU OCEANIS 38 CRUISER



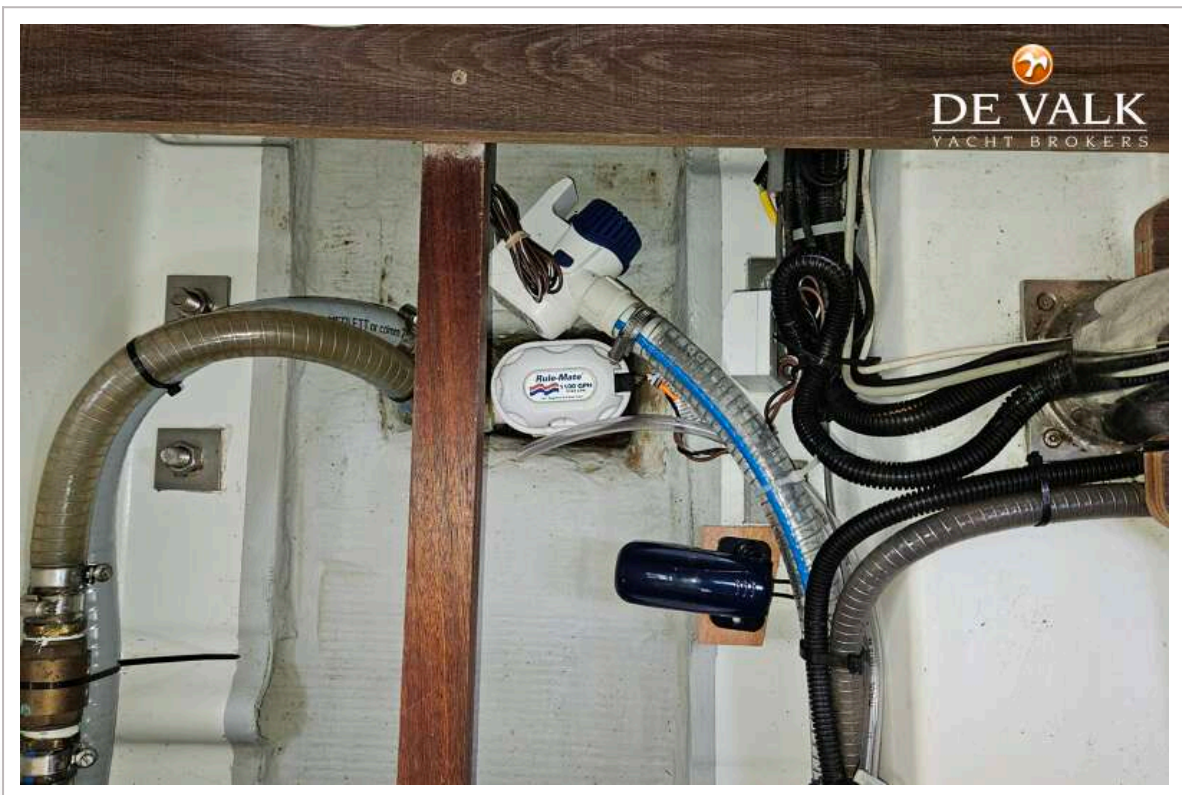
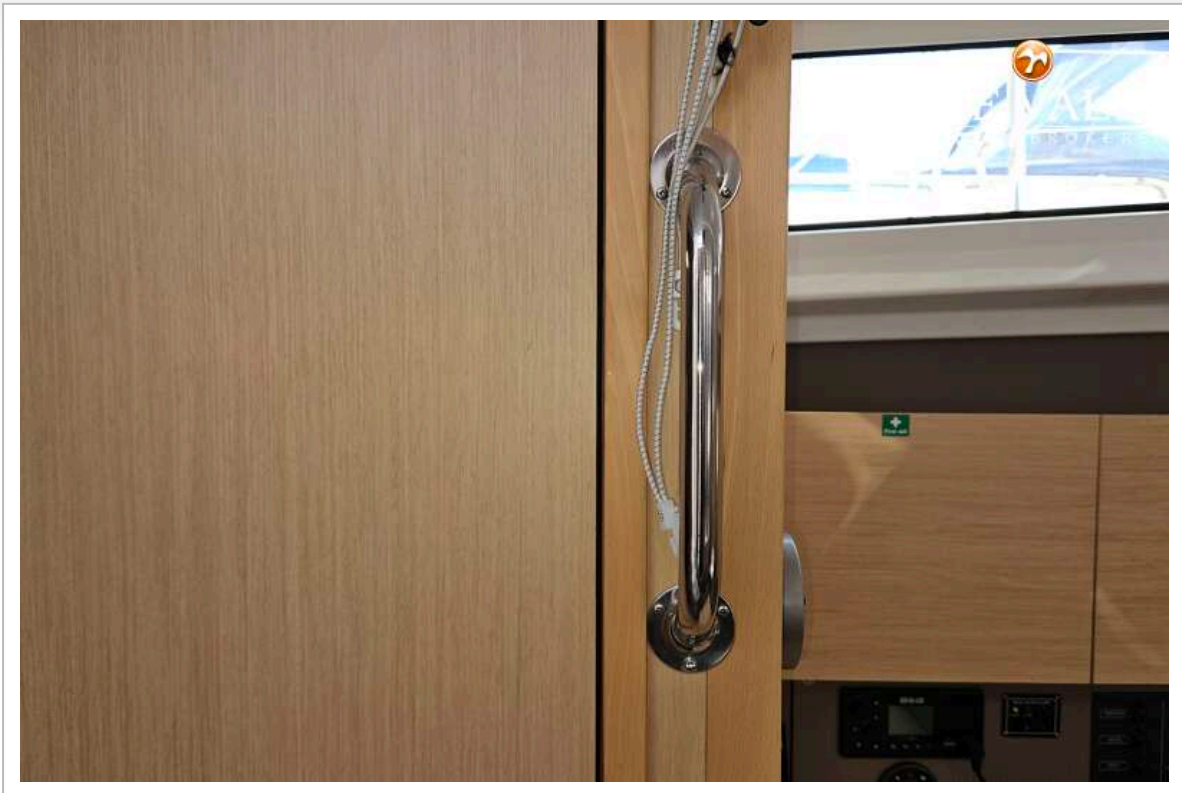
BENETEAU OCEANIS 38 CRUISER



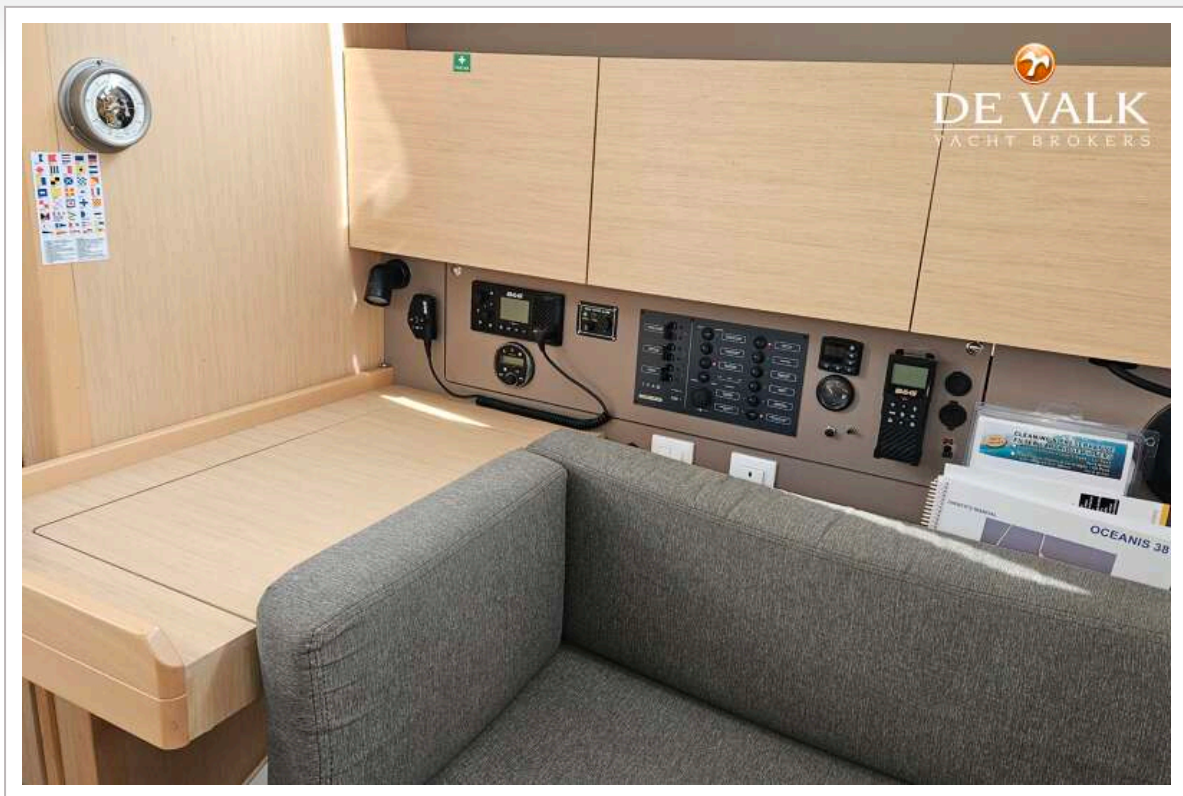
BENETEAU OCEANIS 38 CRUISER



BENETEAU OCEANIS 38 CRUISER



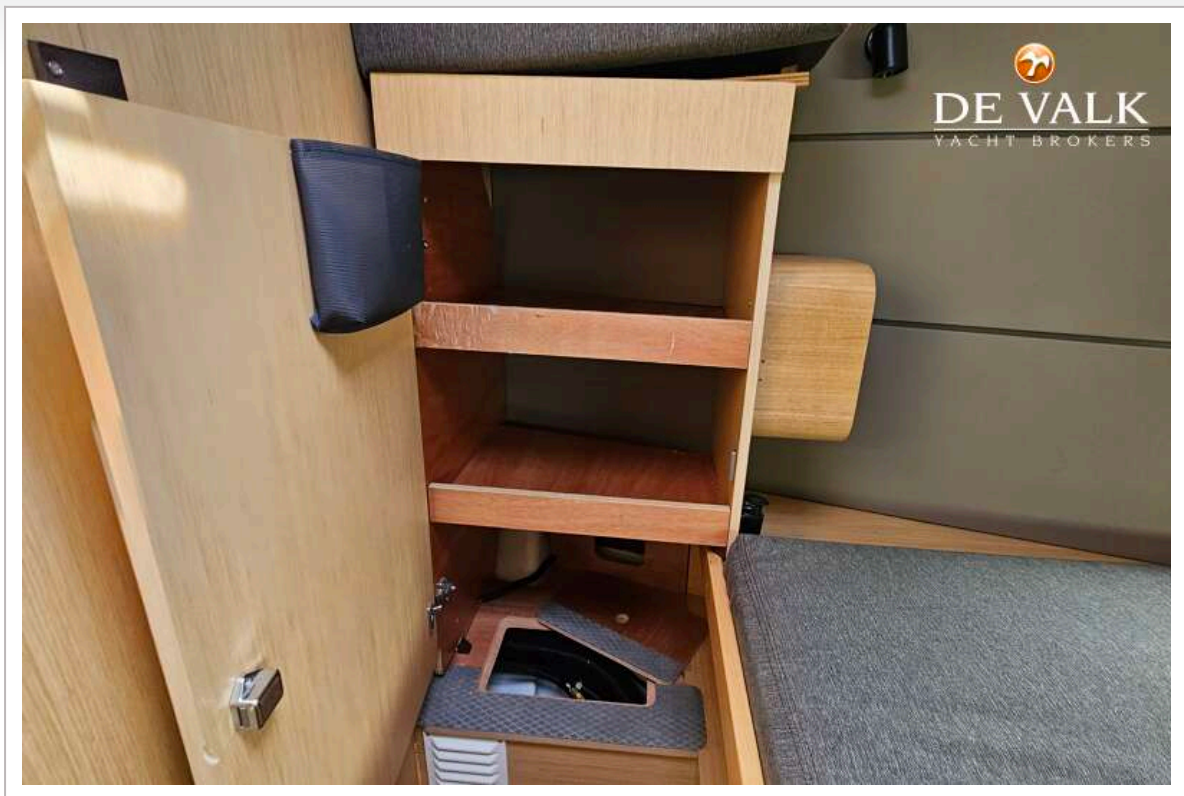
BENETEAU OCEANIS 38 CRUISER



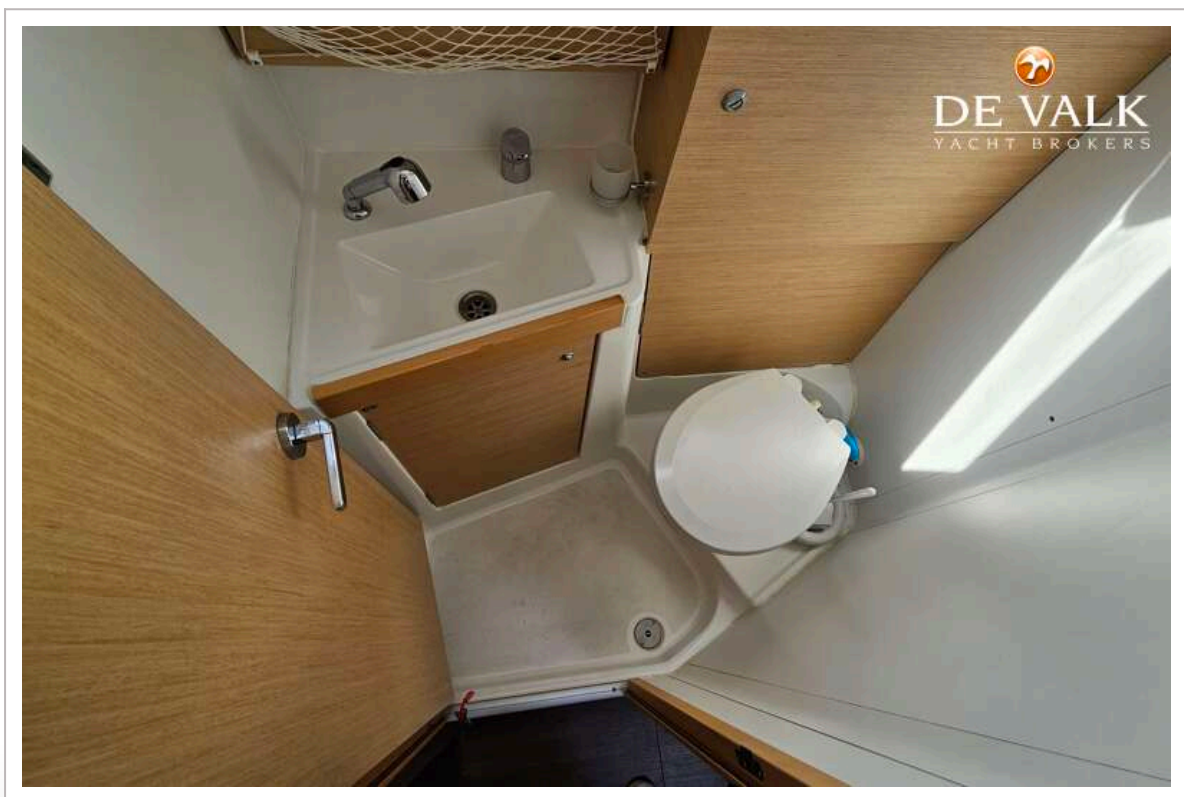
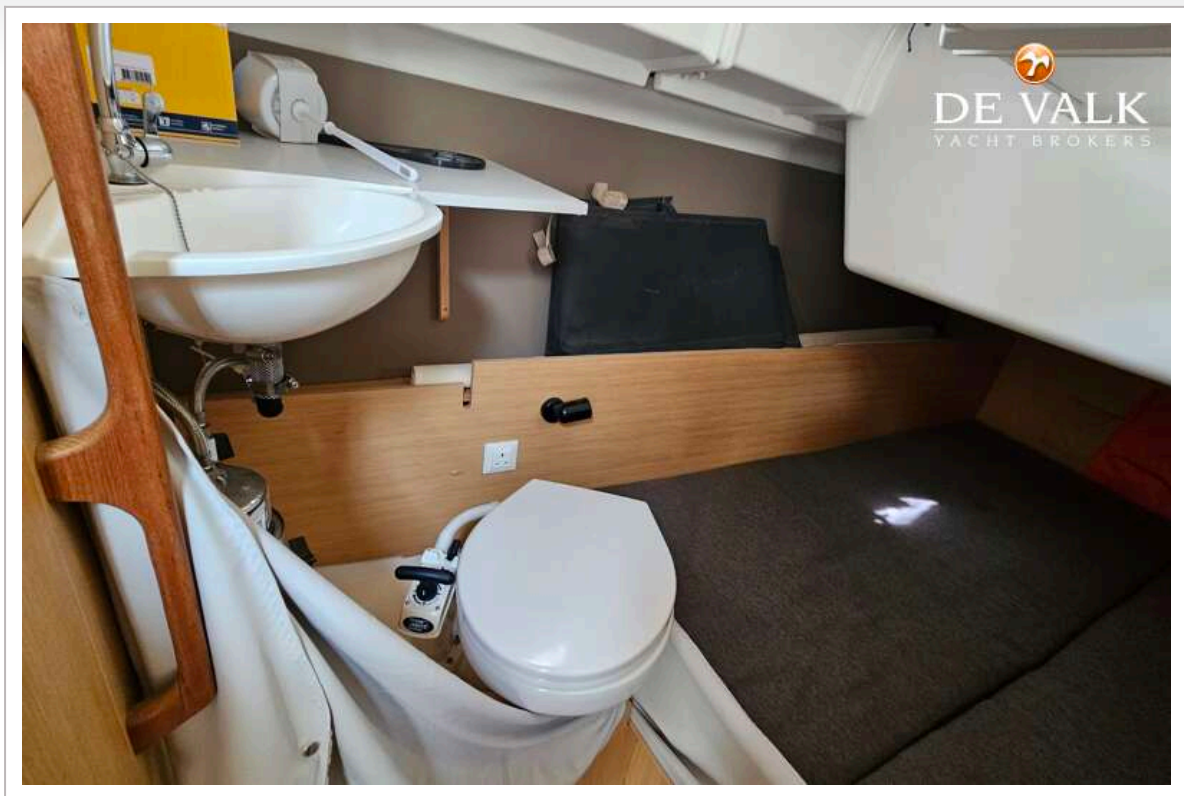
BENETEAU OCEANIS 38 CRUISER



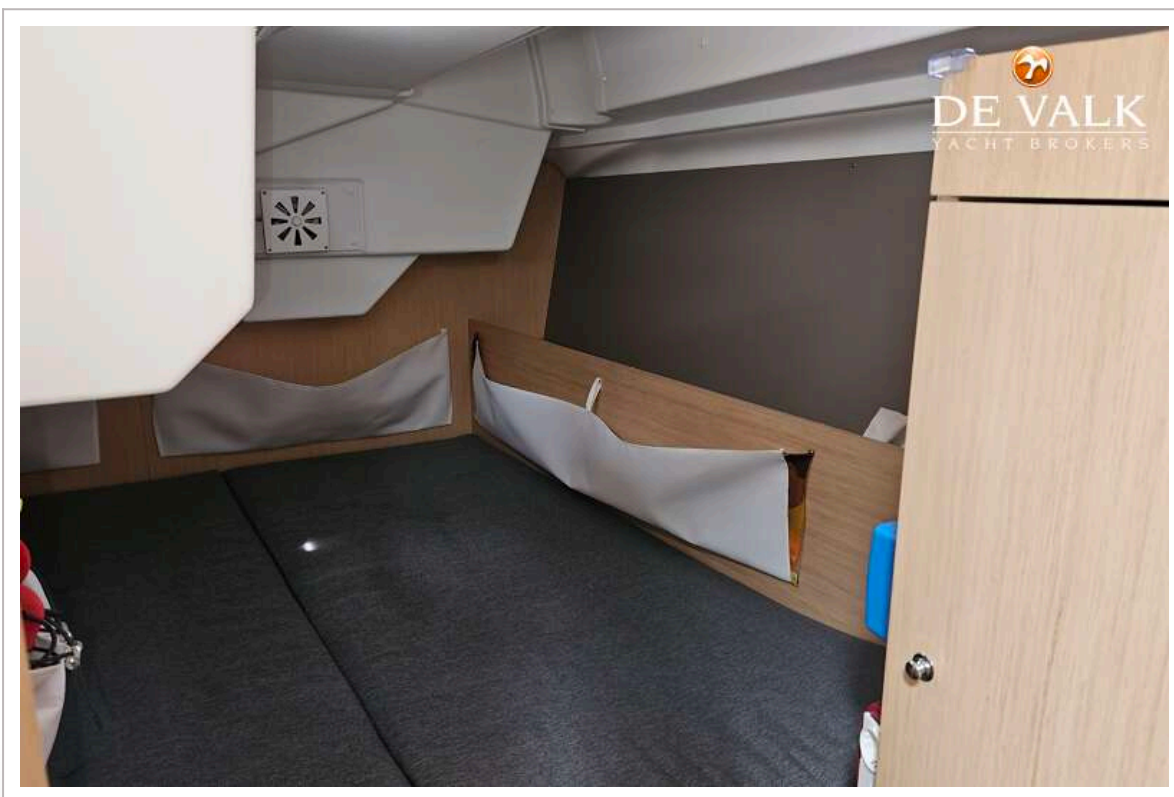
BENETEAU OCEANIS 38 CRUISER



BENETEAU OCEANIS 38 CRUISER



BENETEAU OCEANIS 38 CRUISER



BENETEAU OCEANIS 38 CRUISER

