



## EXPEDITION VESSEL LONG RANGE 29M



# EXPEDITION VESSEL LONG RANGE 29M

## BROKER'S COMMENTS

This robust explorer and dive charter vessel has a rich history of global voyages. Originally built as an Icelandic fishing vessel, its solid construction and thick steel hull ensure durability and reliability. Extensively refitted in the Netherlands in 2007, it later served as both a family home and a liveaboard dive charter in the Mediterranean. Between 2011 and 2014, it operated commercially across the Mediterranean, Red Sea, and Indian Ocean. Accommodations for 12 guests in five en-suite cabins, plus a master and crew cabin, the vessel is well-equipped. Designed for extended voyages.

*Arjen Hoeksma*

## SPECIFICATIONS

<b>Dimensions</b>	29.75 x 6.02 x 2.51 (m)	<b>Builder</b>	Ernst Thalmann Werft
<b>Built</b>	1960	<b>Cabins</b>	8
<b>Material</b>	Steel	<b>Berths</b>	16
<b>Engine(s)</b>	1 x Caterpillar 3408 V8 diesel	<b>Hp/Kw</b>	480.00 (hp), 353.28 (kw)
<b>Asking price</b>	€ 1.190.000 (VAT Exempt)	<b>Lying</b>	Malta

## CONTACT

<b>Sales office</b>	De Valk Dalmatia	<b>Telephone</b>	0031 653 299 244
<b>Address</b>	Ul. Velimira Skorpika 22000 Sibenik HR	<b>E-mail</b>	dalmatia@devalk.nl

## DISCLAIMER

These particulars are given in good faith as supplied but cannot be guaranteed.



# EXPEDITION VESSEL LONG RANGE 29M

## GENERAL

Model	EXPEDITION VESSEL LONG RANGE 29M
Type	motor yacht
LOA (m)	29,75
LWL (m)	22,84
Beam (m)	6,02
Draft (m)	2,51
Year built	1960
Launched	1960, extensive refit in 2007 and 2025
Builder	Ernst Thalmann Werft
Country	Germany
Ballast (tonnes)	concrete
Net tonnage	99,42
Hull material	steel
Hull colour	blue
Hull thickness (mm)	6-8
Hull shape	deep-V
Keel type	long keel
Superstructure material	steel
Superstructure (mm)	6
Deck plate thickness (mm)	6
Rubbing strake	steel
Deck material	steel
Deck finish	teak
Superstructure deck finish	non-skid paint
Antifouling (year)	2025
Window frame	brass
Window material	tempered glass
Portholes	brass
Insulation	foam
Radar arch	non collapsible



# EXPEDITION VESSEL LONG RANGE 29M

Fuel tank (litre)	steel 25,000
Level indicator (fuel tank)	yes
Fuel daytank (litre)	steel 550
Level indicator (daytank)	yes
Freshwater tank (litre)	steel 6,000
Blackwater tank (litre)	GRP 800
Level indicator (blackwater)	yes
Blackwater tank extraction	deck extraction + pump
Greywater tank (litre)	GRP
Wheel steering	hydraulic
Inside helm position	yes
Emergency tiller	yes
Extra info	The yacht is currently being refitted onshore
Extra info	Registered UK flag as private at the moment

## ACCOMMODATION

Cabins	8
Berths	16
Crew cabin	2/3
Crew berths	3/4
Interior	Ash, cherry, and teak
Layout	8 cabins with ensuite (6 below deck, 2 deck level)
Floor	Teak and tiles
Aft deck	yes
Pilot house	yes
Deck saloon	yes
Pilot house/deck saloon	yes
Saloon	yes
Headroom saloon (m)	2,30
Heating	central heating Diesel with radiators and floor heating in cabins below deck



# EXPEDITION VESSEL LONG RANGE 29M

Air-conditioning	yes
Navigation center	yes
Dinette	yes
Galley	yes
Countertop	granite
Sink	stainless steel
Cooker	electric
Oven	yes
Extractor	yes
Microwave	yes
Fridge	With freezer
Freezer	yes
Hot water system	220V or central heating
Water pressure system	electrical
Kettle	yes
Coffee maker	yes
Crockery	yes
Owners cabin	double bed
Bed length (m)	2,00
Wardrobe	hanging/drawers/shelves
Bathroom	en suite
Toilet	yes
Wash basin	in the bathroom
Shower	en suite
Guest cabin 1	single bed 4x
Bed length (m)	2,00
Wardrobe	hanging and drawers
Bathroom	en suite
Toilet	en suite
Wash basin	in the bathroom
Shower	en suite
Guest cabin 2	Guest Cabin 2,3,4 and 5, twin single



# EXPEDITION VESSEL LONG RANGE 29M

Bed length (m)	2,0
Wardrobe	hanging and drawers
Bathroom	en suite
Toilet	en suite
Wash basin	in the bathroom
Shower	en suite
Crew cabin(s)	2x single cabin
Washing machine	yes
Dryer	yes
Ironing facilities	yes

## MACHINERY

No of engines	1
Make	Caterpillar
Type	3408 V8
HP	480
kW	353.28
Fuel	diesel
Year of overhaul	2025
Maximum speed (kn)	12
Cruising speed (kn)	7-9
Consumption (l/hr)	40
Engine cooling system	closed keelcooling
Engine controls	mechanical
Gearbox	hydraulic
Exhaust	dry
Propeller type	fixed
Propeller blades	3 bronze
Propeller shaft material	steel
Shaft lubrication	grease
Manual bilge pump	yes



# EXPEDITION VESSEL LONG RANGE 29M

Electric bilge pump	yes
Bilge alarm	yes
Generator	Perkins 27 kVA dry exhaust
Running hours generator	12,500
Generator 2	Caterpillar Olympian 35 kVA dry exhaust
Running hours generator 2	5,750
Batteries	10
Start battery	2
Service battery	6
Generator battery	2
Battery charger	Victron 30A
Inverter	Victron 5 KVA
Solar panel	Solar power installation with inverter
Shorepower	with cable
Insulation transformer	yes
Watermaker	yes

## NAVIGATION

Compass	yes
Electric compass	yes
Depth sounder	yes
Depth sounder/log	yes
Log	yes
Windset	yes
Repeater	yes
Fish finder	yes
VHF	Garmin
VHF handheld	yes
Autopilot	yes
Rudder angle indicator	yes
Radar	yes



# EXPEDITION VESSEL LONG RANGE 29M

GPS	Raymarine G-series
Plotter	yes
Plotter/GPS	Raymarine G-series
Radar/GPS/plotter	Raymarine G-series
Weather receiver	yes
Navtex	yes
Personal computer	yes
PC connection	yes
Electronic chart(s)	yes
AIS receiver	yes
EPIRB	yes
Personal MOB transmitter	yes
Camera	yes
Navigation lights	yes
Searchlight	yes
Loudhailer	yes
Extra info	This yacht provide a great opportunity as a liveaboard
Extra info	A change of life or the start of a new charter company

## EQUIPMENT

Fixed windscreen	yes
Sun awning	yes
Gangway	yes
Anchor	2x 150kg Bower
Anchor chain	2x 120 mtr
Windlass	hydraulic
Deck wash	yes
Dinghy	RIB 7 meters, fixed bottom, Mercury inboard diesel, new
Deck crane	Hydraulic, aft-deck 1,5 ton
Sea railing	steel
Grab rail (superstructure)	steel





# EXPEDITION VESSEL LONG RANGE 29M

Life raft	container
Lifejackets	yes
Safety harness	yes
Safety lines on deck	yes
Clearview window	yes
Window ventilator	yes
Horn	electric
Radar reflector	yes
Fenders	yes
Mooring lines	yes
Spare parts	yes
Tools	yes
Satellite	yes
TracVision ball	yes
Radio-cd player	Bose surround system
DVD player	yes
Surround Sound System	yes
Speakers in salon	yes
Clock - barometer	yes
Fire extinguisher	yes
Latest extinguisher survey	2025
Extinguisher in engine room	yes
Auto extinguisher system	yes
Extra info	Tender 1: Delta offshore 8.87m GRP double hull Yamaha 240hp jet
Extra info	Tender 2: 6.5m V rib, inb. diesel Mercury V6 260 hp stern drive
Extra info	Dive equipment for 20 persons

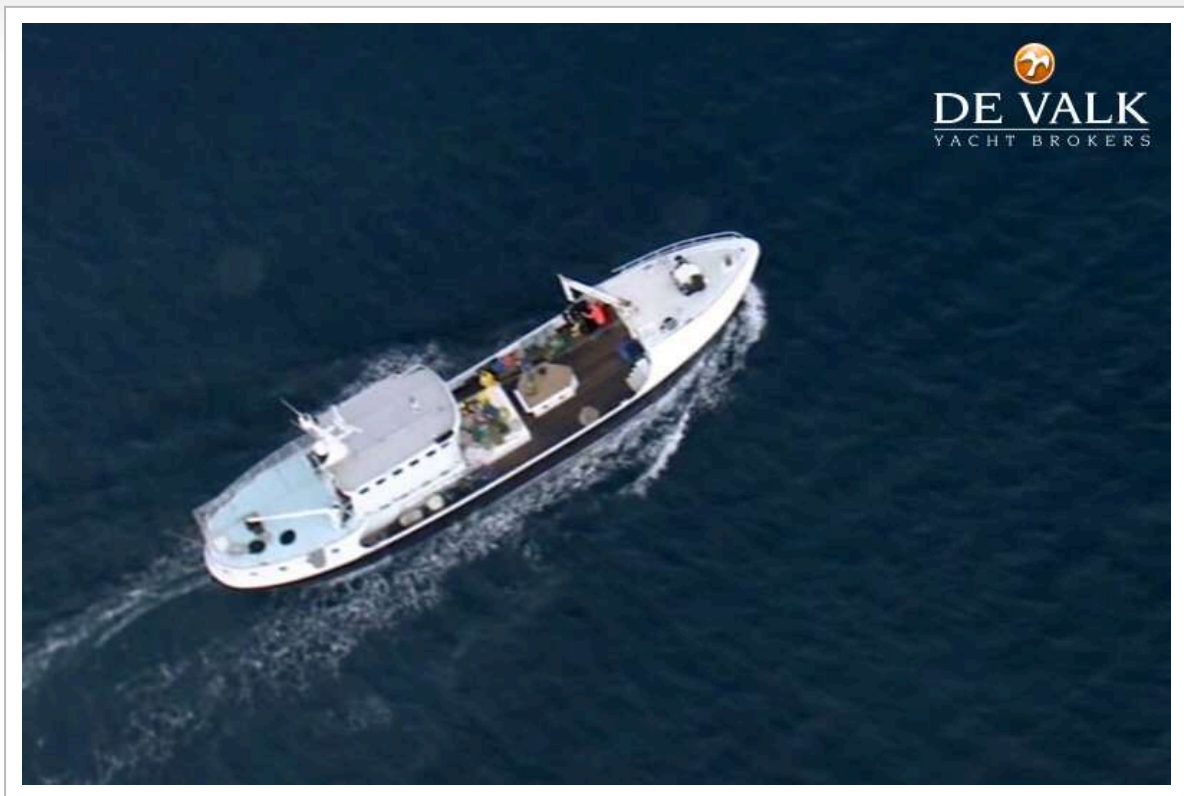


# EXPEDITION VESSEL LONG RANGE 29M



# EXPEDITION VESSEL LONG RANGE 29M



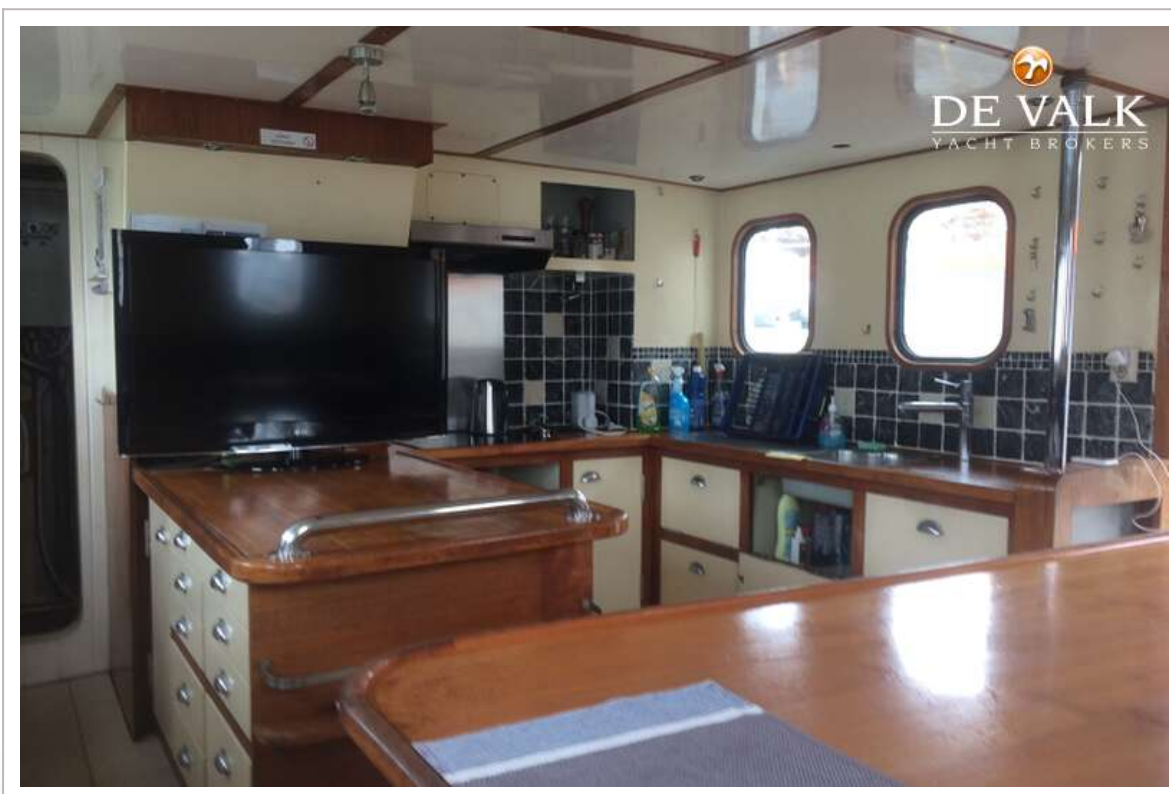




## EXPEDITION VESSEL LONG RANGE 29M

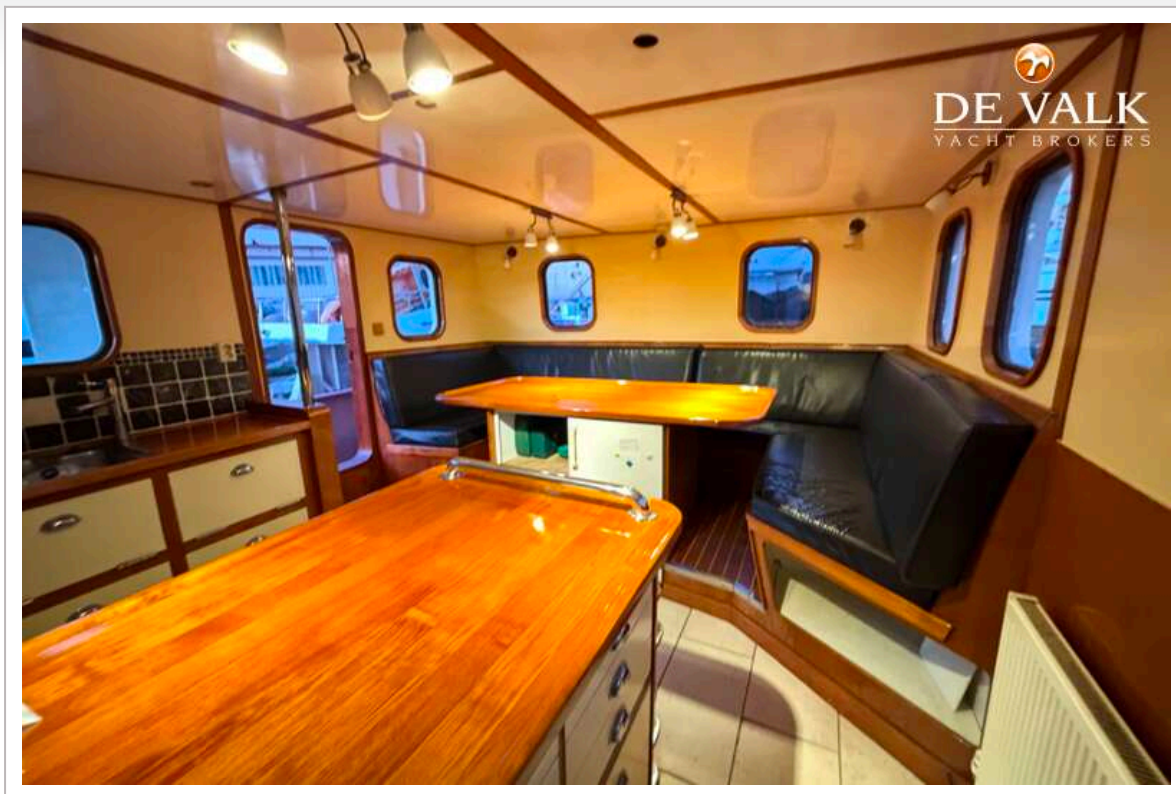


## EXPEDITION VESSEL LONG RANGE 29M





## EXPEDITION VESSEL LONG RANGE 29M



## EXPEDITION VESSEL LONG RANGE 29M

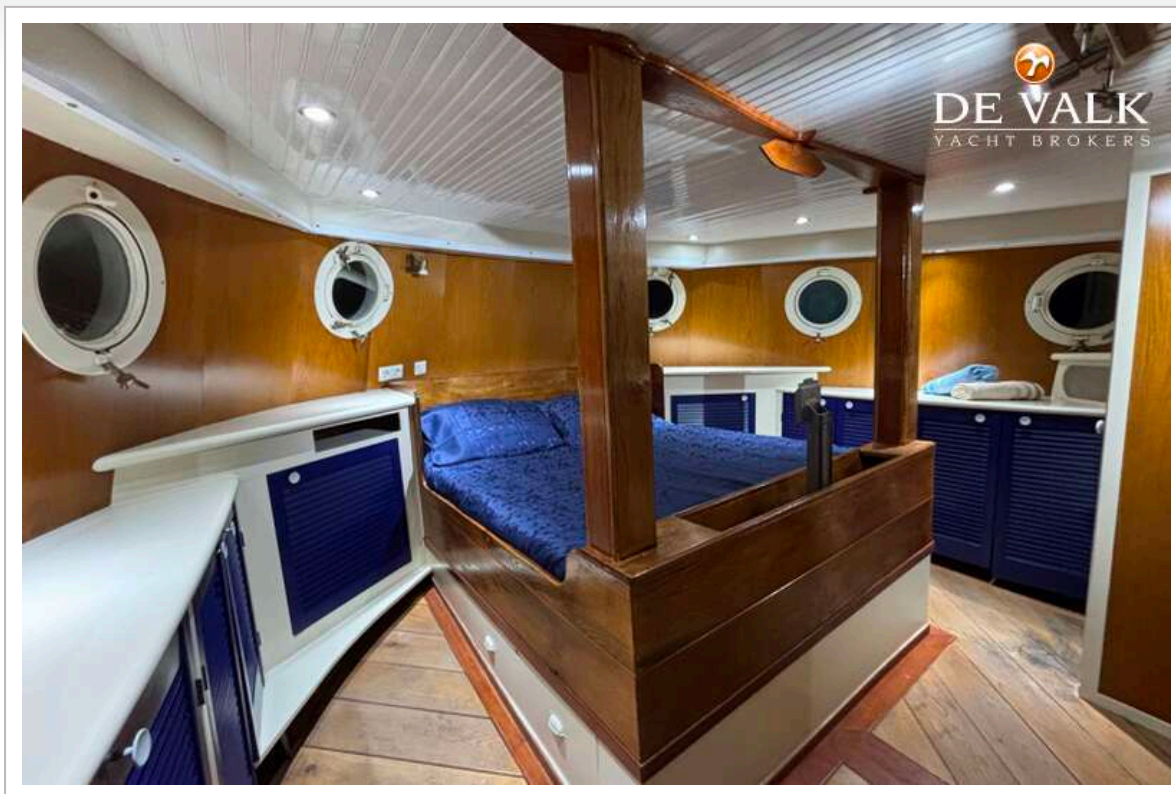




## EXPEDITION VESSEL LONG RANGE 29M

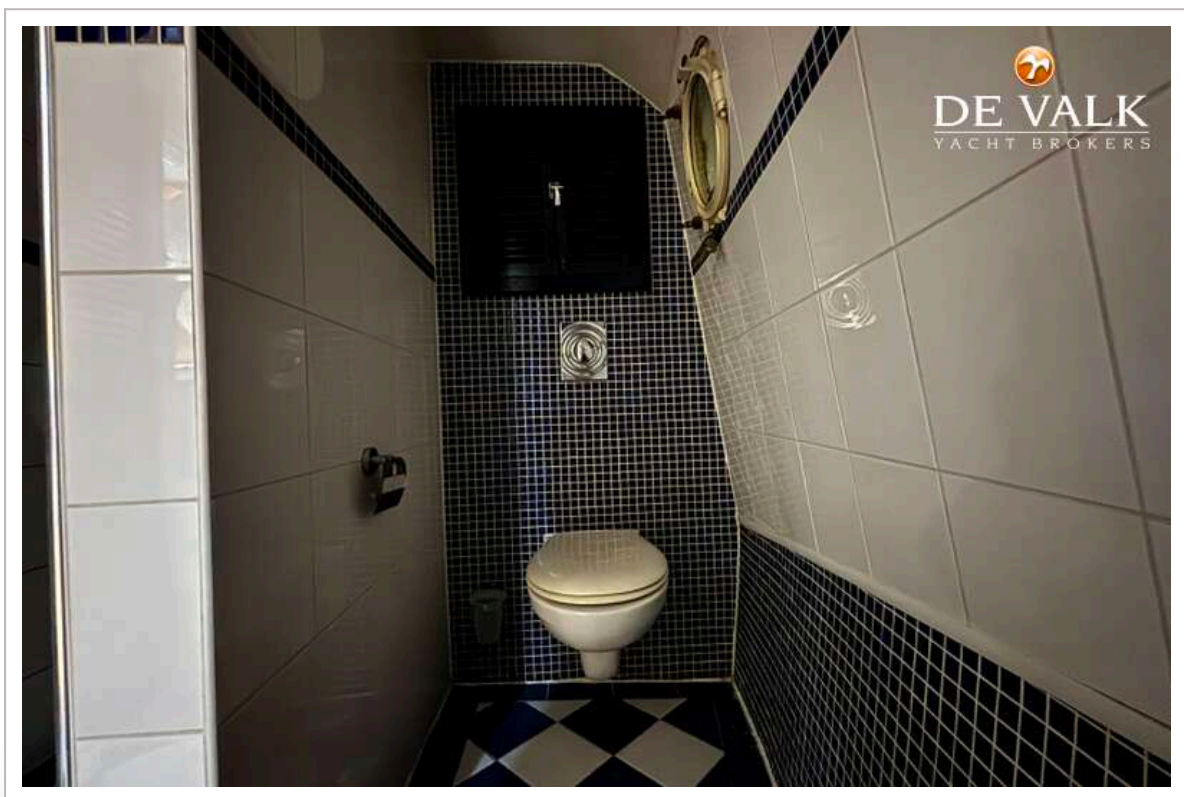
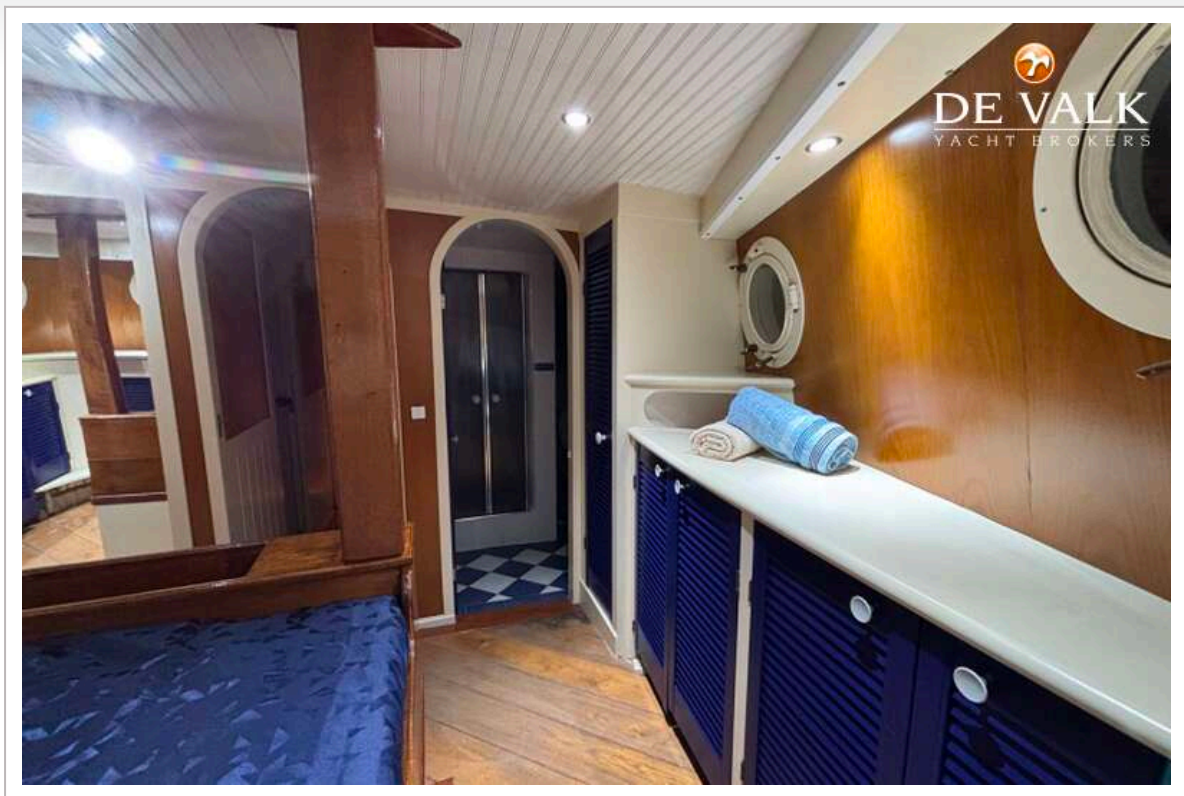


## EXPEDITION VESSEL LONG RANGE 29M

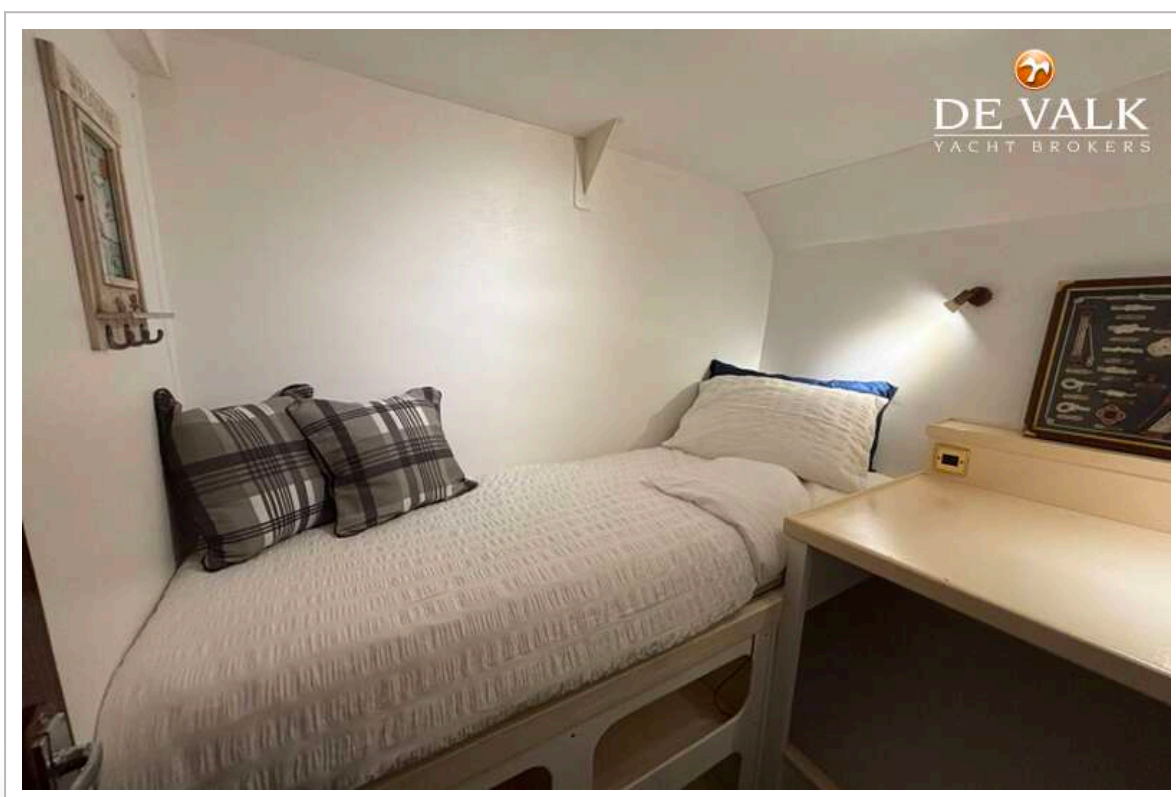




## EXPEDITION VESSEL LONG RANGE 29M

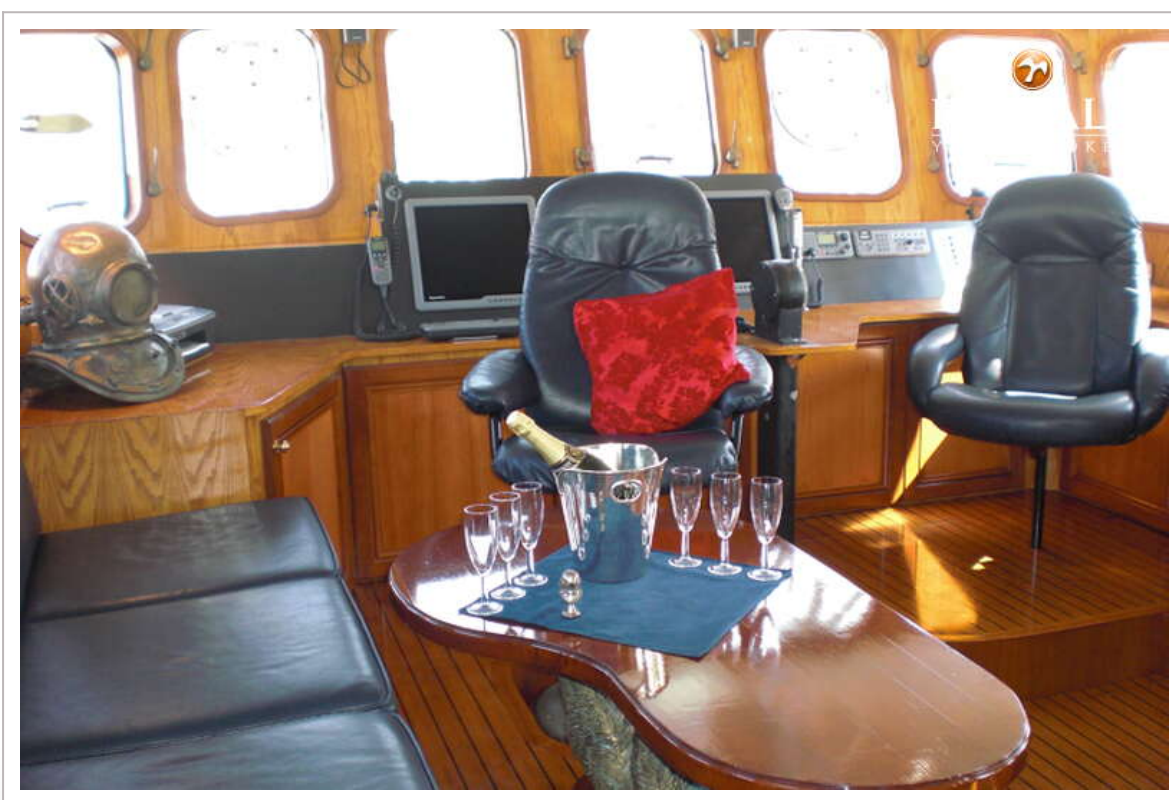


## EXPEDITION VESSEL LONG RANGE 29M





## EXPEDITION VESSEL LONG RANGE 29M



## EXPEDITION VESSEL LONG RANGE 29M

