



DE VALK
YACHT BROKERS



NOORDKAPER 48 -S



DE VALK
YACHT BROKERS

BROKER'S COMMENTS

'Kingfisher' - Tough, stylish and ocean-worthy. A characterful steel sailing yacht with a centreboard, designed for global travel as well as comfortable accommodation on board. She combines classic lines with modern sailing characteristics and is equipped for both solo sailors and families. With her teak interior, spacious, sheltered cockpit, and reliable equipment, she is ready for new adventures - from the Wadden Sea to the world's oceans. She is a unique opportunity for those looking for freedom, safety and timeless design. Experience her for yourself. She is ready for departure !

Reinier van der Wolf

SPECIFICATIONS

Dimensions	15.50 x 4.60 x 1,35 / 2.40 (m)	Builder	Flevo Jachtbouw B.V. Nijkerk
Built	2011	Cabins	3
Material	Steel	Berths	6
Engine(s)	1 x Vetus Deutz Turbo DTA 44422EPK diesel	Hp/Kw	140.00 (hp), 103.04 (kw)
Asking price	€ 549.000 (VAT Paid)	Lying	contact Monnickendam

CONTACT

Sales office	De Valk Monnickendam B.V.	Telephone	+31 (0)299 65 63 50
Address	Hoogedijk 6 1145 PM Katwoude NL	E-mail	monnickendam@devalk.nl

DISCLAIMER

These particulars are given in good faith as supplied but cannot be guaranteed.



GENERAL

Model	NOORDKAPER 48 -S
Type	sailing yacht
LOA (m)	15,50
LWL (m)	12,70
Beam (m)	4,60
Draft (m)	2,40
Draft min (m)	1,35
Air draft (m)	21,50
Headroom (m)	1,95
Year built	2011
Launched	03 - 2011
Builder	Flevo Jachtbouw B.V. Nijkerk
Country	The Netherlands
Designer	Martin Bekebrede Yacht Design
Displacement (t)	26
Ballast (tonnes)	lead 700 in keel - in kiel - im Kiel
CE norm	A
Hull material	steel
Hull colour	Awlgrip Atlantic Blue (04 - 2017)
Hull thickness (mm)	6 mm below the waterline 5 mm above the waterline
Hull shape	S-bilged
Keel type	centreboard electric windlass - elektrische lier - elektrische lier
Superstructure material	steel
Superstructure (mm)	4
Deck plate thickness (mm)	4
Rubbing strake	stainless steel
Deck material	steel
Deck finish	non-skid paint Awlgrip
Superstructure deck finish	non-skid paint Awlgrip
Cockpit deck finish	teak



Antifouling (year)	International hard coating (2022)
Dorades	s/s 4
Window frame	stainless steel coated - gecoat - beschichtet
Window material	tempered glass Hora
Deckhatch	Lewmar 5
Portholes	stainless steel Wigo tempered glass - gehard glas - Sicherheitsglas
Insulation	glasswool
Fuel tank (litre)	steel 450
Fuel tank 2 (litre)	steel approx. 550 cleaned - gereinigd -gereinigt (2024)
Level indicator (fuel tank)	yes
Freshwater tank (litre)	steel approx.1200 cemented - gecementeerd - zementiert
Blackwater tank (litre)	steel approx. 150
Blackwater tank extraction	deck extraction + pump
Greywater tank (litre)	steel approx. 450
Level indicator (greywater)	malfunction
Wheel steering	hydraulic Stazo inside and out - binnen en buiten - Innen und Aussen
Emergency tiller	yes
More info on hull	ballast: combination of lead and punch caps
Extra info	Below the deckhouse the engine room, all equipment protected between 2 nearly watertight bulkheads behind the aft cabin another watertight bulkhead. Watertight bulkhead before mastercabin
Extra info	keel position indicator (2017)
Extra info	port side diesel tank fitted with 'fuel polish' system.

ACCOMMODATION

Cabins	3
Berths	6
Interior	teak veneer teak - fineer teak -Furnierholz Teak
Layout	yes



Floor	Wenge hardwood - Wenge hardhout - Wenge-Hartholz
Pilot house/deck saloon	U-shaped
Saloon	U-shaped
Headroom saloon (m)	2.10
Heating	central heating Kabola convectors -radiators - convectoren - radiatoren
Air-conditioning	single cycle airco Dometic ISO, 220v
Aft Cabin	yes
Galley	L-shaped
Countertop	corian
Sink	corian 1x
Cooker	calor gas Boretti 4 burner-pits-Brenner
Extractor	220v
Gas alarm	electric gas valve control (2017) valid gas certificate Truma (2017)
Microwave/oven combi	LG
Fridge	separate inverter + 2x Gel 130 Ah Bosch AAA+ 220v (2023)
Hot water system	on central heating Kabola
Water pressure system	electrical
Hot water tap	yes
Ice maker	yes
Owners cabin	French bed front - voor - Forne
Bed length (m)	1.60 x 2.00
Wardrobe	hanging/drawers/shelves
Bathroom	en suite starboard - stuurboord - Steuerbord
Toilet	en suite portside - bakboord - Backbord
Toilet system	electric Tecma
Wash basin	at the toilet
Shower	en suite
Guest cabin 1	double bed middle - midden - Mitte
Bed length (m)	1.40 x 2.00
Wardrobe	hanging and shelves



Bathroom	shared
Toilet	shared Temca
Toilet system	electric
Wash basin	in the bathroom
Shower	shared
Guest cabin 2	double bed Aft.
Bed length (m)	with crank canvas 1.60 x 2.00
Extra info	isolating transformer (2017)

MACHINERY

No of engines	1
Make	Vetus Deutz Turbo
Type	DTA 44422EPK
HP	140
kW	103.04
Fuel	diesel
Year installed	2011
Maximum speed (kn)	8
Cruising speed (kn)	7
Consumption (l/hr)	6
Engine hours	2100
Engine cooling system	freshwater heat exchanger
Drive	shaft
Engine controls	bowden cable
Gearbox	hydraulic
Bowthruster	electric Vetus Thruster
Exhaust	watercooled by propeller shaft - via schroefas - über Propellerwelle
Thrust bearing	yes
Propeller type	feathering Maxprop
Propeller blades	4



Propeller shaft material	stainless steel 2022
Shaft lubrication	water
Electric bilge pump	4
Electrical installation	24 volt
Generator	wet exhaust Whispervolt 3 Kw
Start battery	with charger (2022) 2x
Service battery	4x 220 Ah (2023)
Generator battery	1x
Bowthruster battery	with separate charger 2x Victron 165 Ah (2022)
Battery monitor	2 control panel with monitor functions 3 Victron
Battery charger	for bow thruster battery/engine/generator
Battery charger/inverter	2 (60A + 20A)
Shorepower	with cable
Extra info	spare propeller - fixed

NAVIGATION

Depth sounder	Raymarine ST60+ Tridata
Log	Raymarine ST60+ Tridata
Windset	Raymarine ST60+ Wind
Repeater	yes
VHF	inside and outside Ray240E
Autopilot	Raymarine ST6002 Smart Pilot
Radar	yes
GPS	yes
Plotter	outside '12 Raymarine C120w
Electronic chart(s)	yes
AIS receiver	yes
EPIRB	yes
Camera	with alarm function WiFi
Navigation lights	LED
Extra info	inside interconnected with outside '9 Raymarine C90w plotter



EQUIPMENT

Cockpit cushions	yes
Cockpit table	Teak
Boarding ladder	stainless steel
Deck shower	yes
Anchor	Danforth 45 kg - s/s - rvs - Edelstahl
Anchor chain	10 mm chain 60 m
Windlass	electrical Maxwell
Deck wash	prepared for deck wash installation
Davits	stainless steel
Sea railing	stainless steel 32mm
Railing side opening gates	yes
Pushpit	s/s
Pulpit	s/s
Life raft	valise (or bag) Plastimo Cruiser 6 (2022)
Life raft (pers)	6
Wiper	2
Radar reflector	yes
Fenders	yes
Mooring lines	yes
Spare parts	pumps, oil filters, drive belts
TV	in owners cabin Dmtech
Radio-cd player	Kenwood
Cockpit speakers	yes
Speakers in salon	yes
Clock - barometer	Barometer hygro/temp meter (no clock) Wempe
Fire extinguisher	2
Auto extinguisher system	yes

RIGGING

Rigging	sloop-cutter with bow sprit - met boegspriet - mit Bogenspriet
---------	--



Standing rigging	wire s/s - rvs - Edelstahl
Brand mast	Seldén
Material mast	aluminium
Spreaders	3
Battcars	yes
Fully battened mainsail	with dutchman flaking system Dacron
Jib	laminate
Cutter furler	Profurl
Staysail	laminate
Staysail furler	Profurl
Self tacking jib installation	yes
Reefing System	quick-one-line-reefing
Boomvang	mechanical and tackle Seldén Rodkicker 30
Primary sheet winch	electric 2x Andersen 52ST 2x Andersen 40ST
Halyard winches	on mast 2x Andersen 40 ST
Winchcovers	4
Extra info	all sail handling from the cockpit possible



NOORDKAPER 48 -S



NOORDKAPER 48 -S

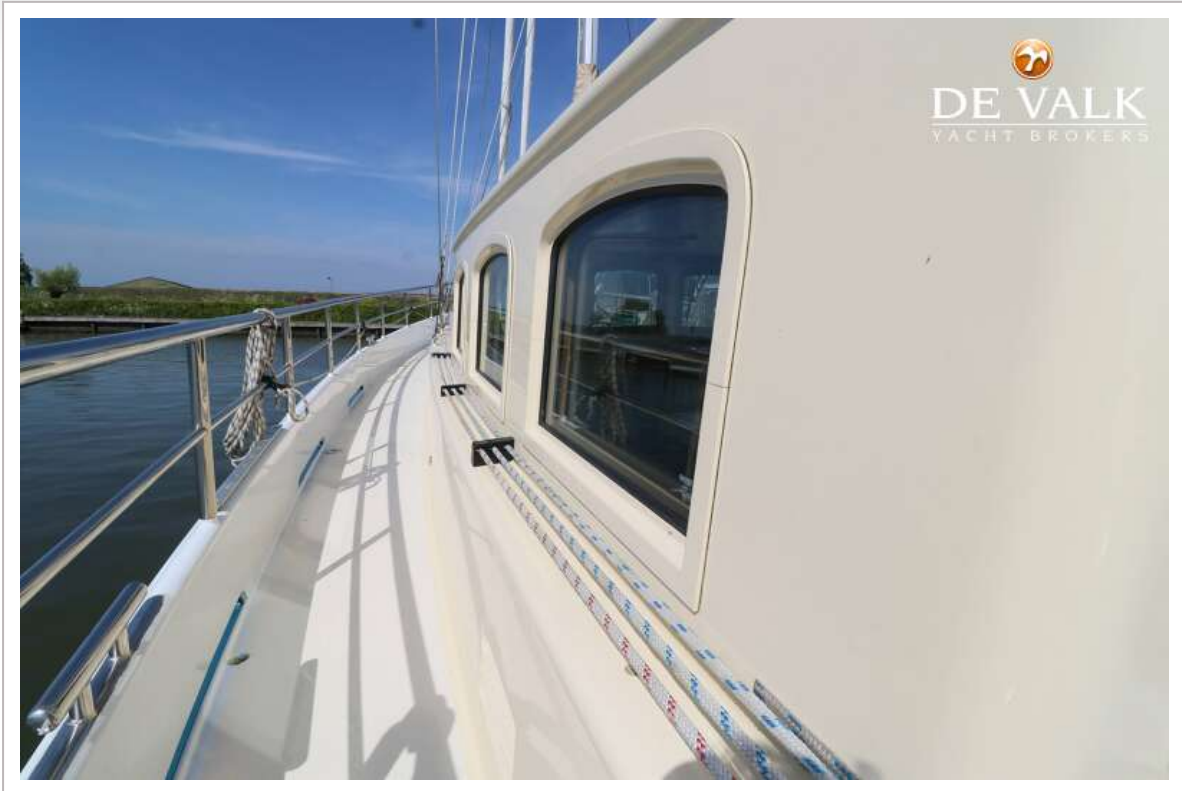








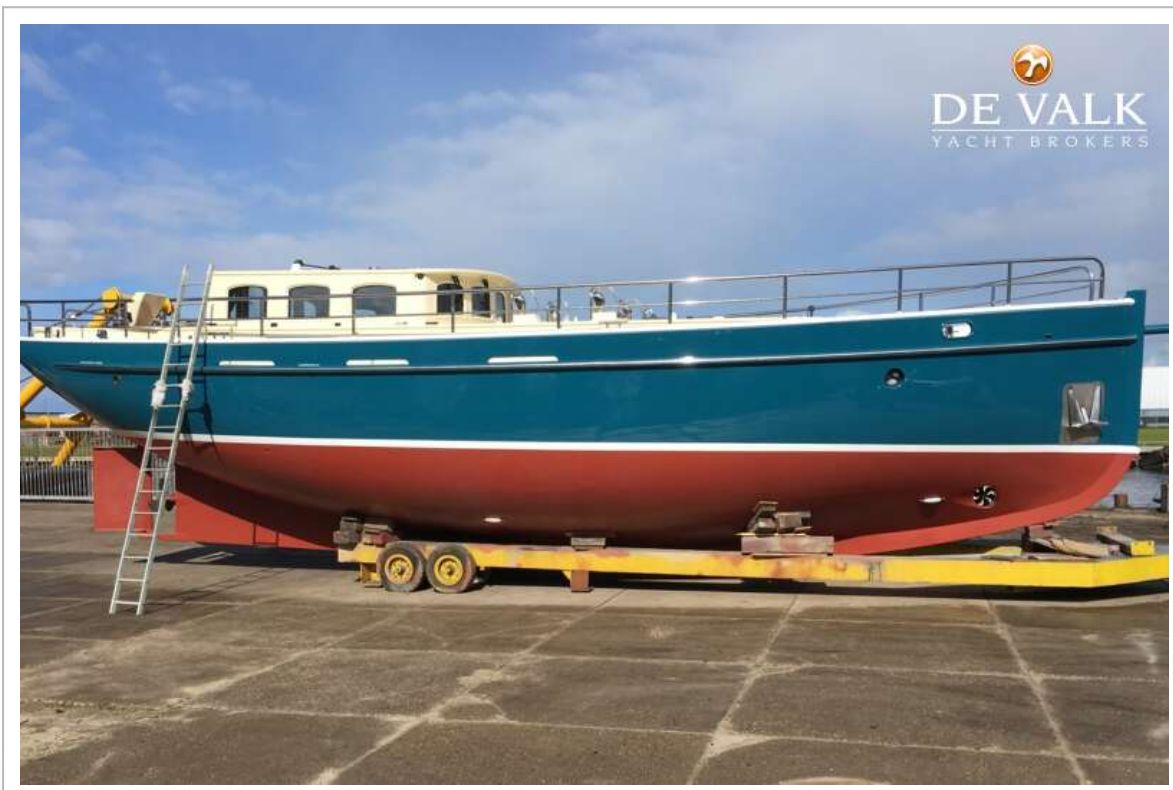




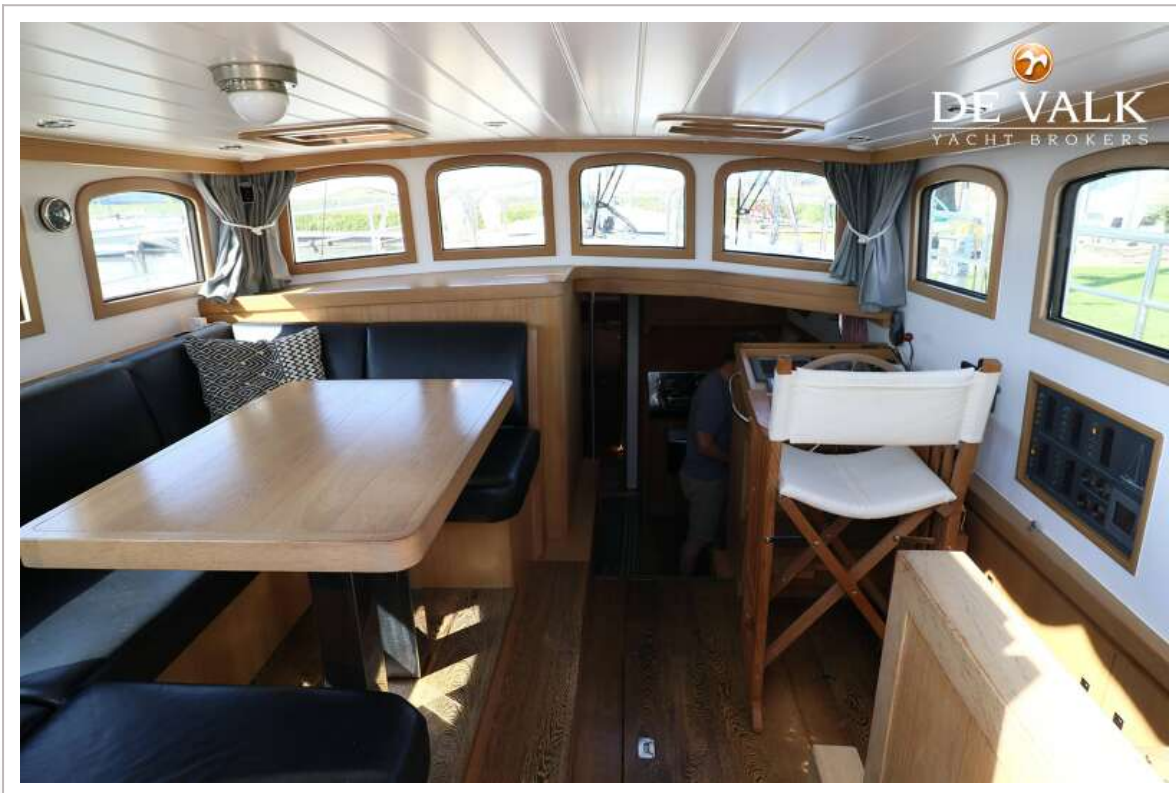
NOORDKAPER 48 -S



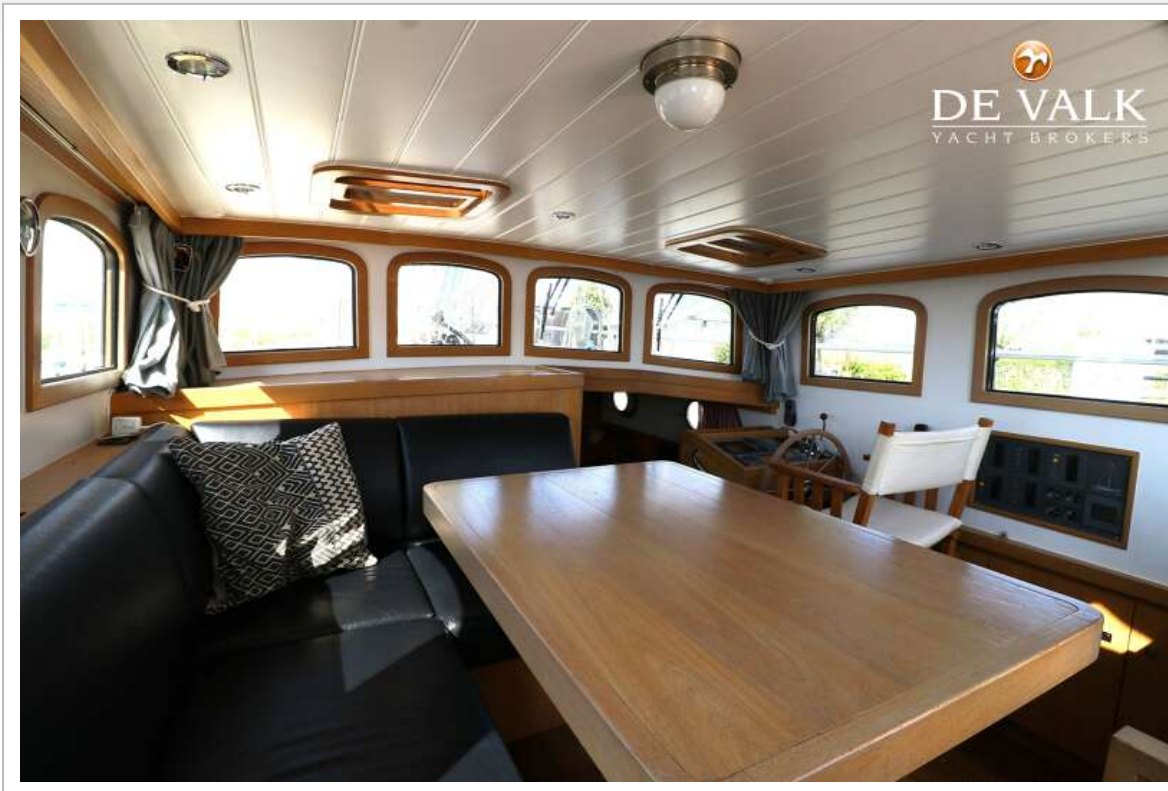
NOORDKAPER 48 -S



NOORDKAPER 48 -S



NOORDKAPER 48 -S



NOORDKAPER 48 -S

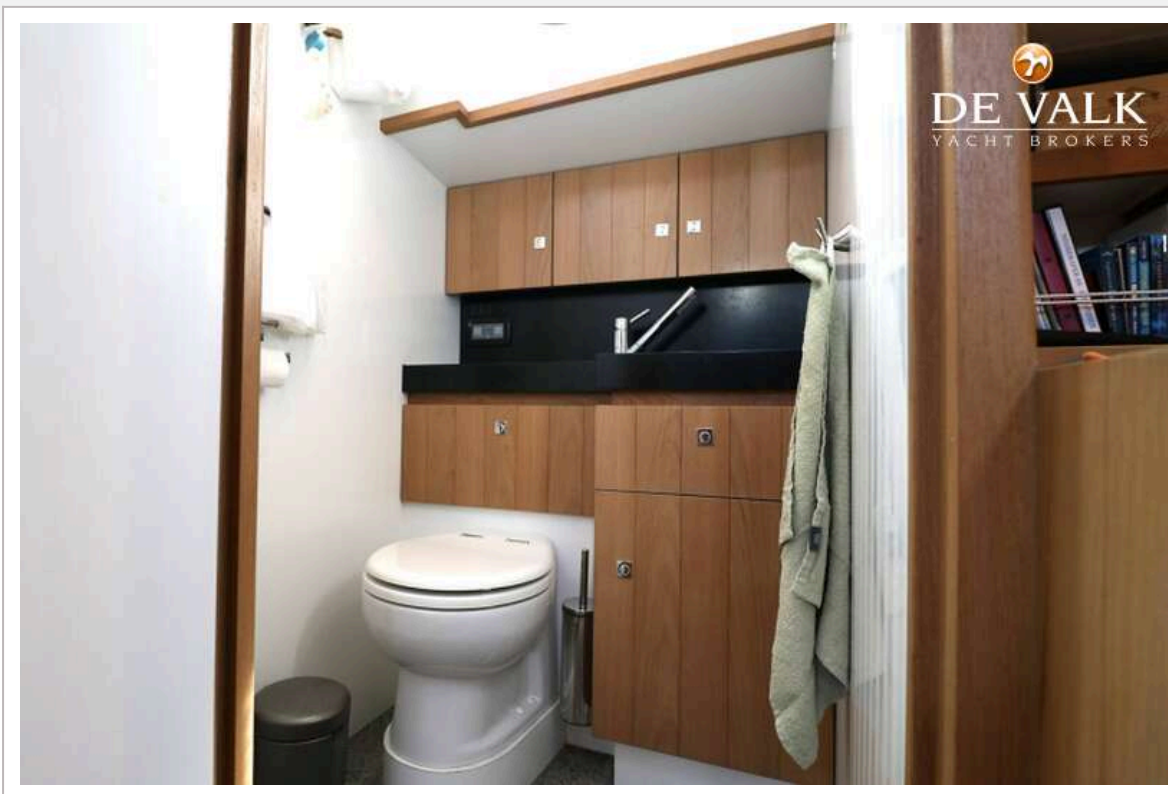






NOORDKAPER 48 -S





NOORDKAPER 48 -S



