



## SWEDEN YACHTS 50

# SWEDEN YACHTS 50

## BROKER'S COMMENTS

This Sweden 50 is an extensively and recently refitted Swedish pedigree oceangoing yacht, combining performance with elegance, comfort and safety. She has been meticulously prepared by naval architect/superyacht refit specialist owner for a family world cruise. Energy and fresh water independent, new sails, new standing rigging, fully refurbished teak deck, shallow draft wing keel, long list of new equipment and upgrades. Powerful Volvo Penta 140hp engine with Gori overdrive propeller, air conditioning, bow thruster, electric genoa furler and genoa winches. This Sweden 50 is ready to go.

*Eric Lamers*

## SPECIFICATIONS

<b>Dimensions</b>	15.25 x 4.35 x 2.00 (m)	<b>Builder</b>	Sweden Yachts
<b>Built</b>	1990	<b>Cabins</b>	3
<b>Material</b>	GRP	<b>Berths</b>	9
<b>Engine(s)</b>	1 x Volvo Penta TMD31b diesel	<b>Hp/Kw</b>	140.00 (hp), 103.04 (kw)
<b>Asking price</b>	€ 269.000 (VAT Paid)	<b>Lying</b>	at sales office

## CONTACT

<b>Sales office</b>	De Valk Antibes	<b>Telephone</b>	+33 492 91 0202
<b>Address</b>	2, Avenue de Verdun 06600 Antibes FR	<b>E-mail</b>	antibes@devalk.nl

## DISCLAIMER

These particulars are given in good faith as supplied but cannot be guaranteed.



# SWEDEN YACHTS 50

## GENERAL

Model	SWEDEN YACHTS 50
Type	sailing yacht
LOA (m)	15,25
LWL (m)	12,60
Beam (m)	4,35
Draft (m)	2,00
Headroom (m)	1,94
Year built	1990
Builder	Sweden Yachts
Country	Sweden
Designer	Peter Norlin/Jens Ostman
Displacement (t)	14,5
Ballast (tonnes)	Cast antimony lead keel 6t
CE norm	A
Hull material	GRP
Hull colour	White with grey decorative lines
Hull shape	round-bilged
Keel type	wing keel
Superstructure material	GRP
Deck material	GRP
Deck finish	teak (recaulked and fully refurbished 2024)
Superstructure deck finish	paint
Cockpit deck finish	teak (recaulked and fully refurbished 2024)
Antifouling (year)	Last haul-out 2024, scheduled haul-out for Spring 2025
Dorades	Vetus x 3
Window frame	aluminium Hard anodised
Window material	tempered glass
Portholes	aluminium All hatches refurbished with new seals and lenses 2024
Insulation	Sandwich cored hull and deck for anti-condensation
Fuel tank (litre)	stainless steel 2 stainless total 350 lt



Level indicator (fuel tank)	VDO
Freshwater tank (litre)	3 stainless steel total 700lt
Level indicator (freshwater)	VDO
Blackwater tank (litre)	stainless steel 1 stainless steel 60lt
Level indicator (blackwater)	Sight tube level indication
Blackwater tank extraction	deck extraction
Wheel steering	cable steering On anodised aluminium quadrant
Emergency tiller	Ready for emergency installation with pulley control set-up

## ACCOMMODATION

Cabins	3
Berths	9
Interior	mahogany
Floor	Teak and holly
Headroom saloon (m)	2m
Heating	Reverse cycle air conditioning
Air-conditioning	reverse cycle airco
Chart table	Large chart table/navigation station
Galley	yes
Countertop	Corian countertops in galley and bathrooms
Sink	Corian sinks in galley and bathrooms
Cooker	Gas 4-burner Techimpex + induction top when on shore power
Oven	Gas
Extractor	yes
Fridge	1 x large top load, 1 x day fridge with freezer compartment
Hot water system	220V + engine
Water pressure system	Electrical central pressure pump
Manual and/or foot pump	Foot pump for both fresh water and sea water in galley
Owners cabin	Double bed
Bed length (m)	2.00m
Wardrobe	2 x hanging wardrobes, 2 x large drawers under bed



# SWEDEN YACHTS 50

Bathroom	Ensuite with shower section curtained off from rest of bathroom
Toilet	Ensuite
Toilet system	Manual toilet in master cabin bathroom
Wash basin	yes
Guest cabin 1	Double bed
Bed length (m)	2.00m
Wardrobe	Hanging and multiple lockers
Bathroom	En suite, shared with other aft cabin each with own access door
Toilet	En suite
Toilet system	Electric going to holding tank/overboard via 3-way valve
Shower	En suite, shared with other aft cabin each with own access door
Guest cabin 2	Double bed + small bunk bed
Bed length (m)	2.0m
Wardrobe	Hanging and multiple lockers
Bathroom	En suite, shared with other aft cabin each with own access door
Toilet	En suite
Toilet system	Electric going to holding tank

## MACHINERY

No of engines	1
Make	Volvo Penta
Type	TMD31b
HP	140
kW	103.04
Fuel	diesel
Year installed	1990
Maximum speed (kn)	8.5
Cruising speed (kn)	6.5-7
Range (nm)	350
Engine cooling system	Freshwater heat exchanger (cleaned & anode changed 2024)
Drive	shaft



<b>Engine controls</b>	Bowden cable
<b>Bowthruster</b>	Electric Lewmar 8kW with dedicated batteries and 50A charger
<b>Exhaust</b>	Watercooled, new exhaust cooling elbow 2022
<b>Thrust bearing</b>	Python Drive thrust bearing/flexible coupling new 2022
<b>Propeller type</b>	Gori folding with overdrive
<b>Propeller blades</b>	3
<b>Propeller shaft material</b>	Duplex stainless steel new 2022
<b>Shaft lubrication</b>	Grease through Volvo Penta stern gland 2022
<b>Manual bilge pump</b>	2x fully functioning: 1 interior, 1 exterior cockpit
<b>Electric bilge pump</b>	1x Jabsco
<b>Bilge alarm</b>	Automatic level switch
<b>Electrical installation</b>	24V + 220V on shore power/generator
<b>Generator</b>	Paguro 4kW, wet exhaust
<b>Running hours generator</b>	201 hrs March 2025
<b>Start battery</b>	Main engine 180Ah lead acid heavy duty
<b>Service battery</b>	AGM 4x150Ah new 2023
<b>Generator battery</b>	1x12V 2021
<b>Bowthruster battery</b>	Dedicated battery bank
<b>Battery monitor</b>	Victron Smartshunt and Victron BMV712Smart battery monitoring s.
<b>Battery charger</b>	Mastervolt Chargemaster Plus 60A (new 2022)for house batteries
<b>Inverter</b>	Mastervolt 500W
<b>Battery charger/inverter</b>	Victron Buckboost 2023 for engine alternator charge regulation
<b>Solar panel</b>	4 awning integrated Solbian SR155 solar panels 100% energy needs
<b>Shorepower</b>	with cable
<b>Watermaker</b>	Spectra Cape Horn Extreme 330 24V 55lt/hr,New membrane 2023

## NAVIGATION

<b>Compass</b>	Suunto + B&G Fluxgate
----------------	-----------------------



Depth sounder	B&G
Log	B&G
Windset	B&G
VHF	B&G V60-B with integrated GPS/Class B AIS new 2022
VHF handheld	B&G H-60 new 2022+ Standard horizon handheld with integrated GPS
Autopilot	B&G
Rudder angle indicator	B&G
Radar	Raymarine 4kW 18" HD Color
Radar/GPS/plotter	Raymarine Hybrid Touch 12" screen inside, 7" outside
Electronic chart(s)	Navionics
AIS transceiver	B&G H60 VHF integrated AIS transmit/receive
EPIRB	Kannad SafePro AIS (with integrated AIS transmitter)
Searchlight	Handheld plastimo
Extra info	Sailor Compact HF SSB

## EQUIPMENT

Sprayhood	New 2022
Bimini	New 2022/2023 full cockpit area
Sun awning	Between cockpit awning and mast
Cockpit cushions	Sun lounge cushions forward of sprayhood, new 2022
Cockpit table	2 x extensions
Bathing platform	Large custom platform on transom
Boarding ladder	Stainless steel swim ladder
Gangway	Multiplex carbon fibre gangway new 2023
Deck shower	On stern platform
Anchor	Lewmar Delta 35kg
Anchor chain	70m
Anchor 2	Fortress
Windlass	electrical Simpson Lawrence 2023
Sea railing	Stainless steel (wires&tensioners new 2023)



Grab rail (superstructure)	Teak
Railing side opening gates	P&S
Last life raft survey	New 2022
Lifebuoy	yes
Danbuoy	yes
Safety lines on deck	Yes and multiple pad eyes for tethers around cockpit
Radar reflector	yes
Fenders	New covers 2024
Mooring lines	New 2023
Spare parts	Extensive
TV	yes
Radio-cd player	yes
DVD player	yes
Sub-woofer	yes
Cockpit speakers	yes
Speakers in salon	yes
Speakers in cabin	yes
Clock - barometer	yes
Fire extinguisher	yes

## RIGGING

Rigging	Cutter rig with removable staysail. All new BSI Denmark 2022
Standing rigging	wire
Brand mast	Selden (removed and fully inspected 2022)
Material mast	Aluminium (not coated)
Spreaders	3
Fully battened mainsail	Elvstrom Full batten 60 sqmt eXRP tri-radial with 3 reefs 2023
Genoa	Elvstrom 79.5 sqmt eXRP tri-radial, new 2024.
Genoa furler	Electric Bamar furler (with new controller 2024)
Gennaker	North sails, little use
Staysail	North Sails 3D Marathon staysail





<b>Staysail furler</b>	Karver manual headsail furler
<b>Reefing System</b>	Slab reefing, 3 reefs, deep 3rd reef for storm conditions
<b>Backstay adjuster</b>	Navtec hydraulic (overhaul 2022)
<b>Boomvang</b>	Navtec hydraulic (overhaul 2022)
<b>Primary sheet winch</b>	Lewmar 66 electric x2
<b>Secondary sheet winch</b>	Lewmar 48
<b>Winchcovers</b>	New 2023
<b>Spi-pole</b>	Aluminium
<b>Isolated backstay</b>	New isolators 2022



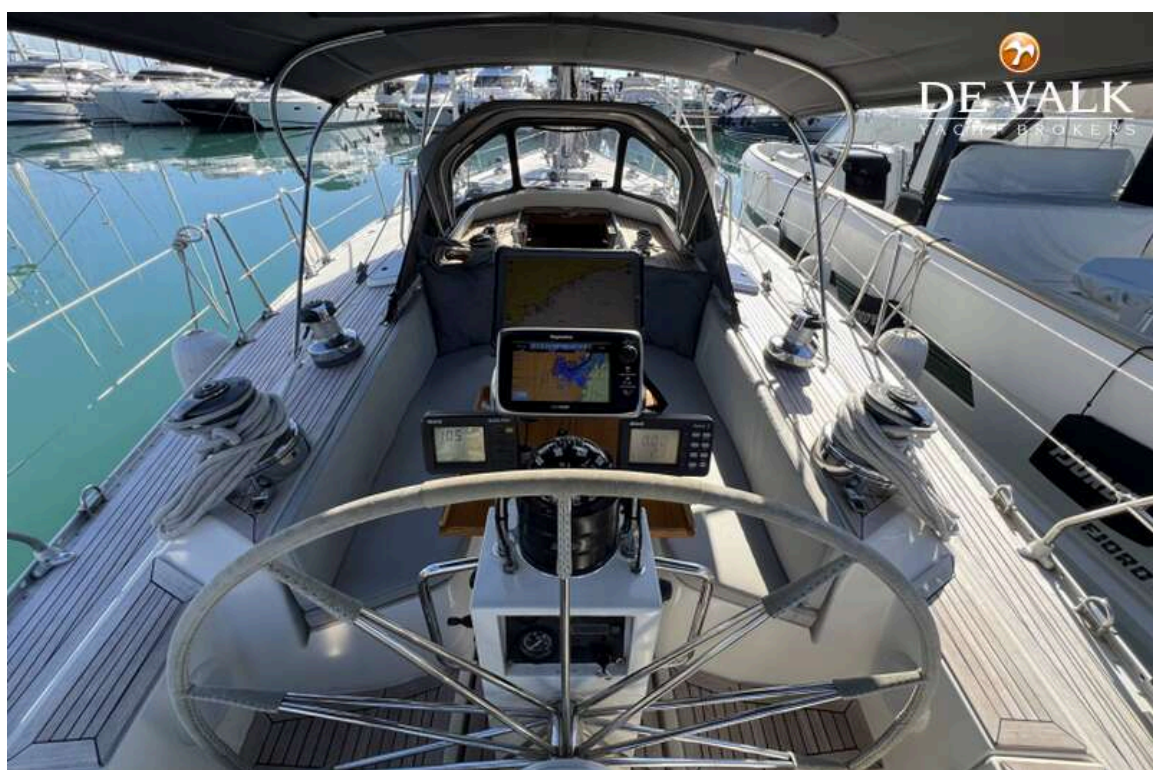








# SWEDEN YACHTS 50





# SWEDEN YACHTS 50

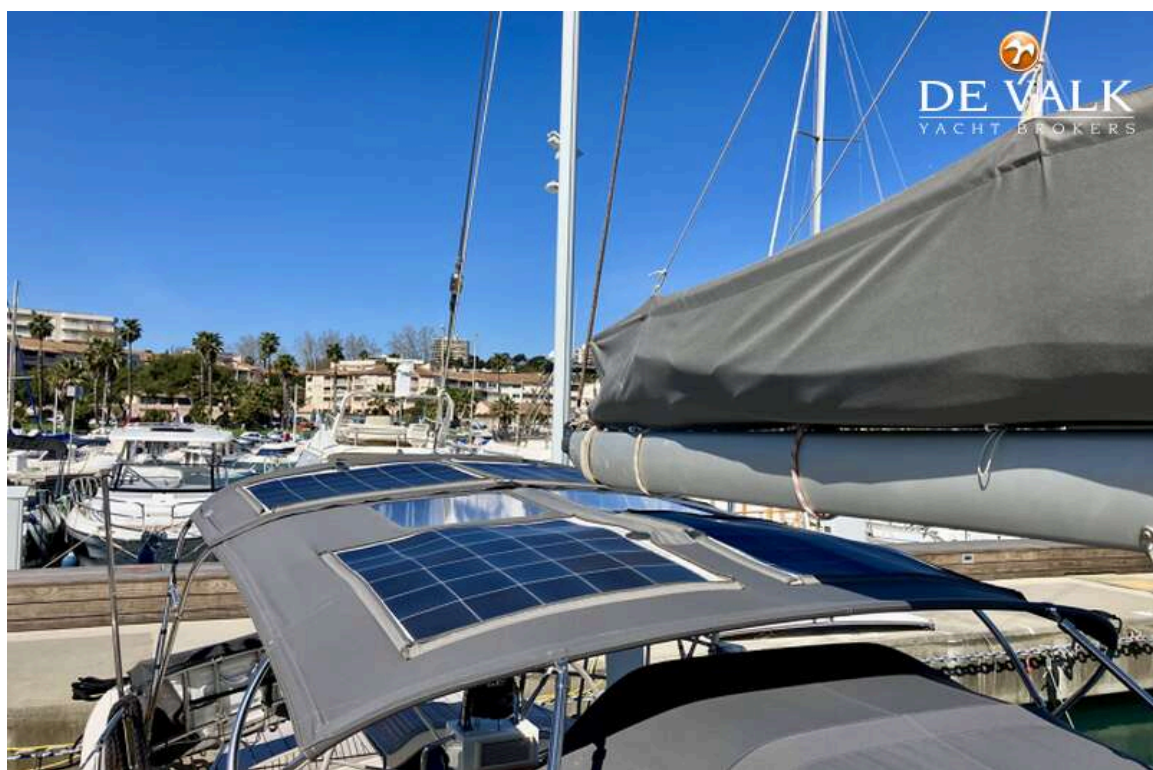
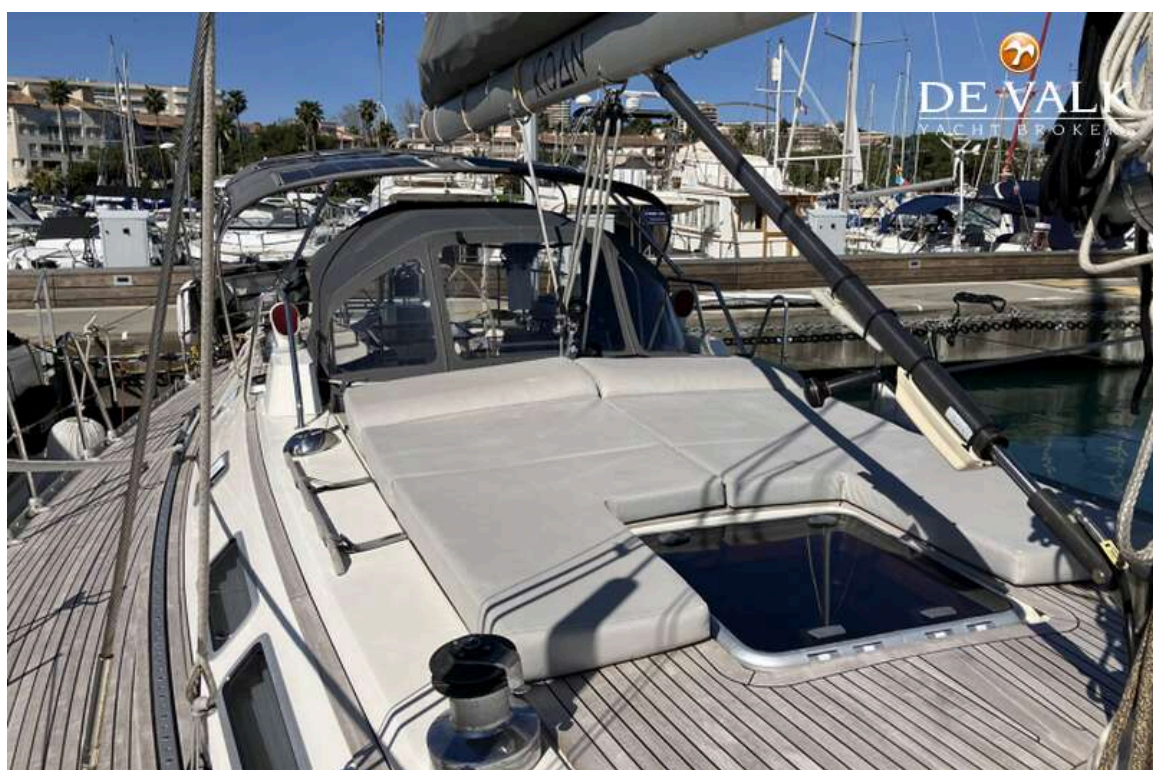




## SWEDEN YACHTS 50



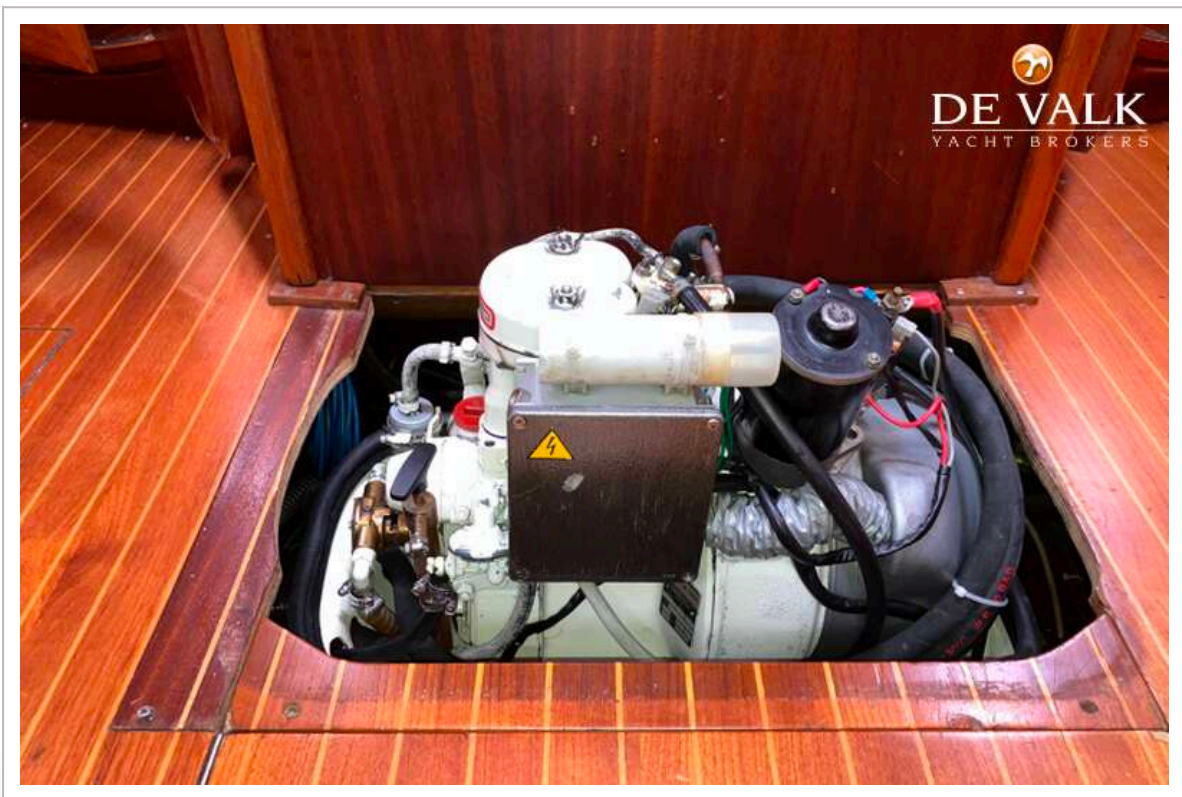
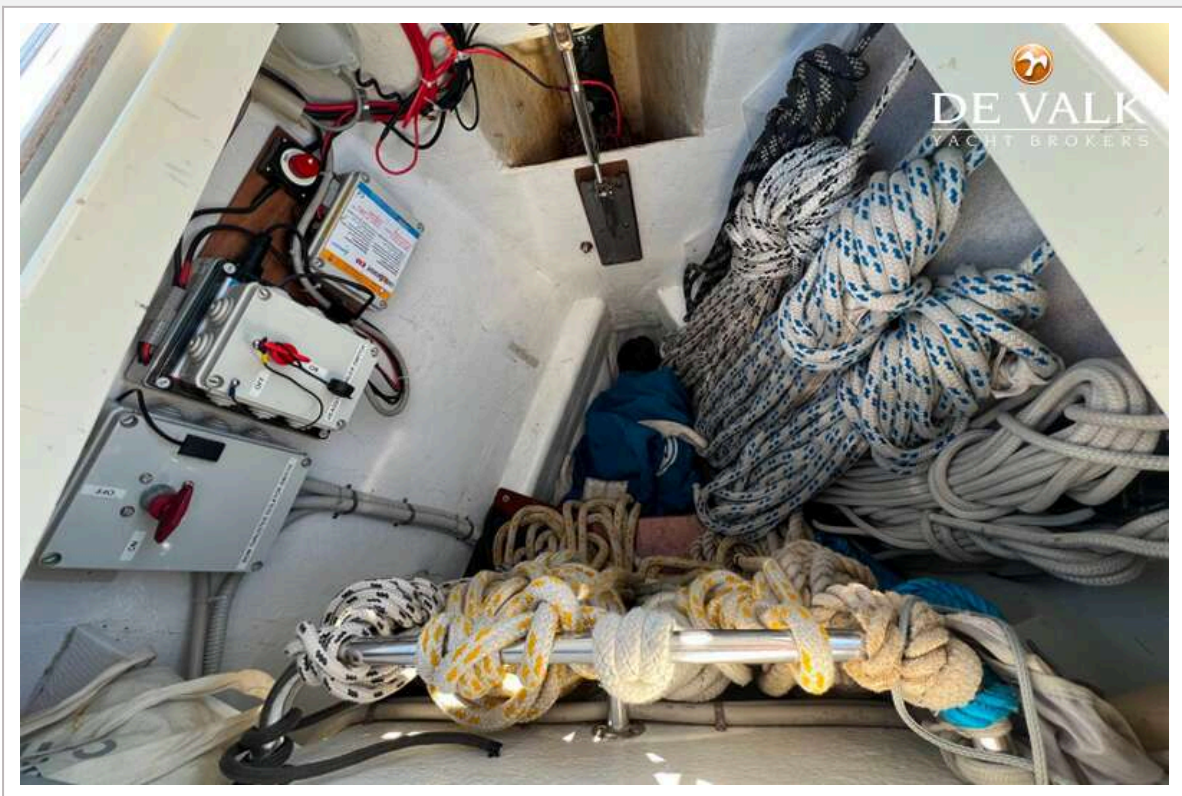






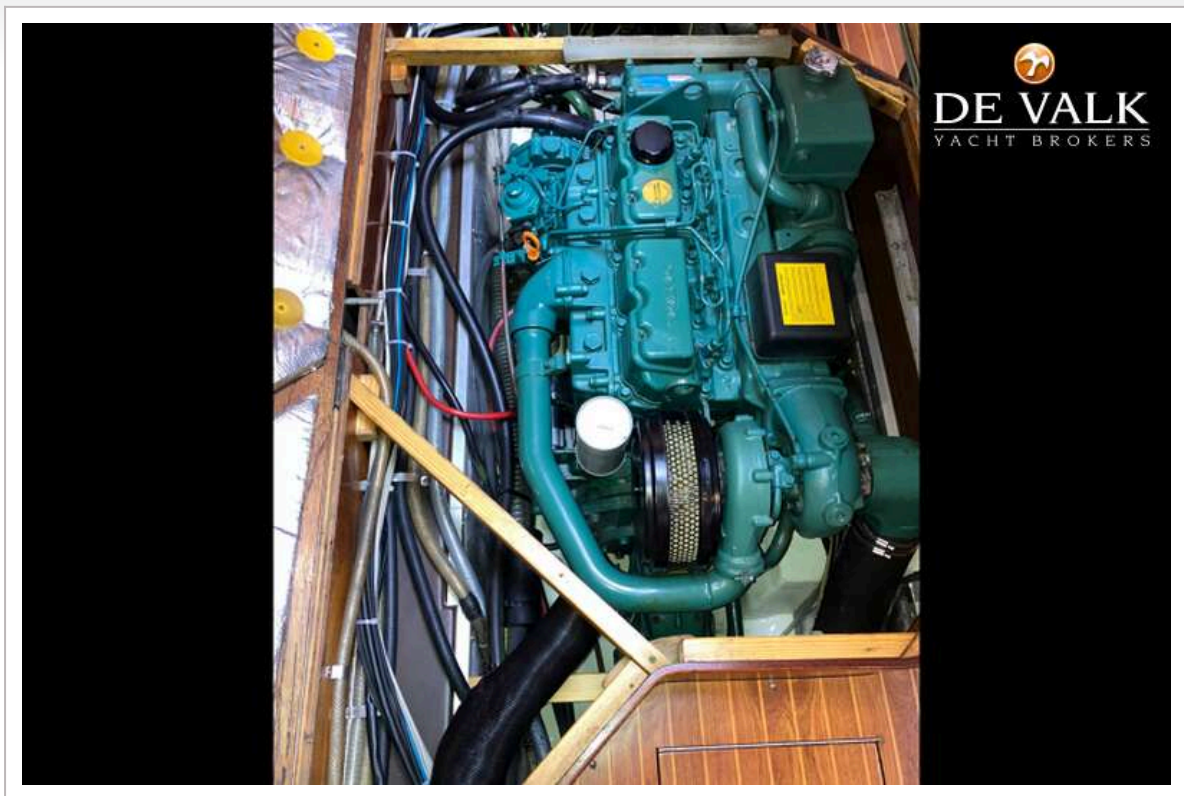








# SWEDEN YACHTS 50



# SWEDEN YACHTS 50





## SWEDEN YACHTS 50

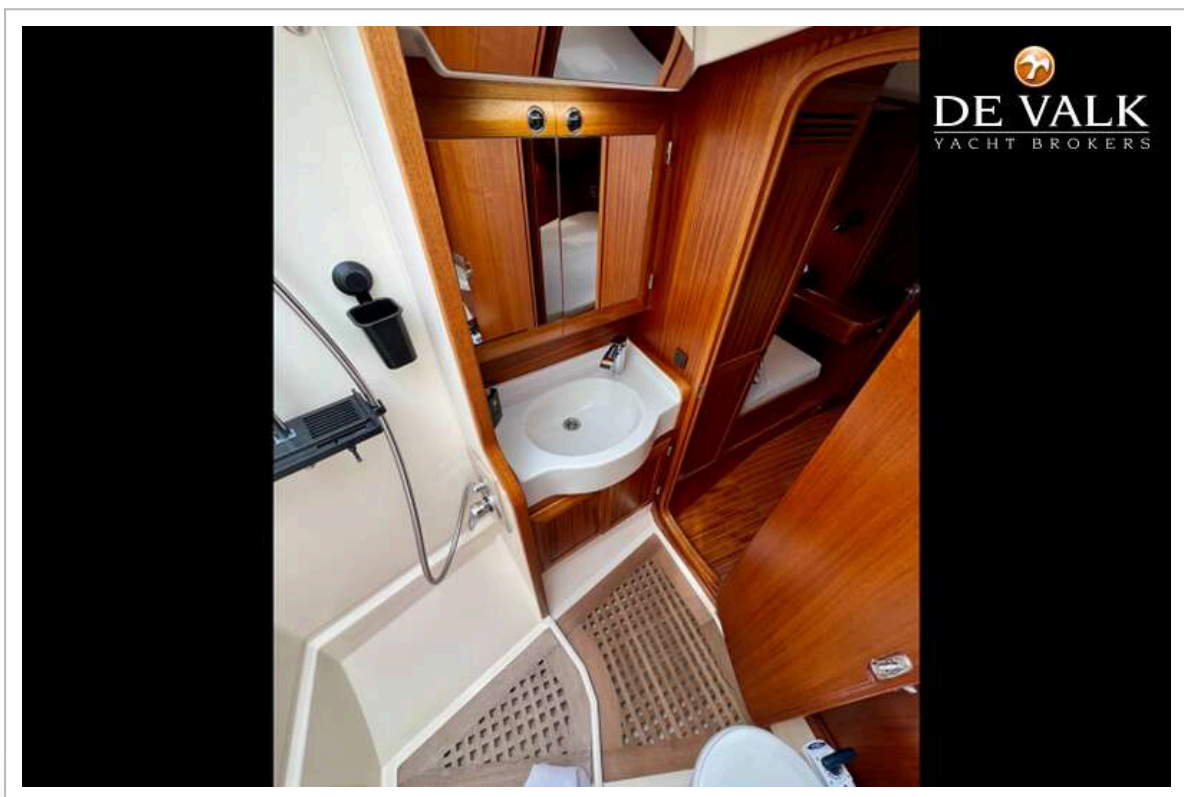




# SWEDEN YACHTS 50

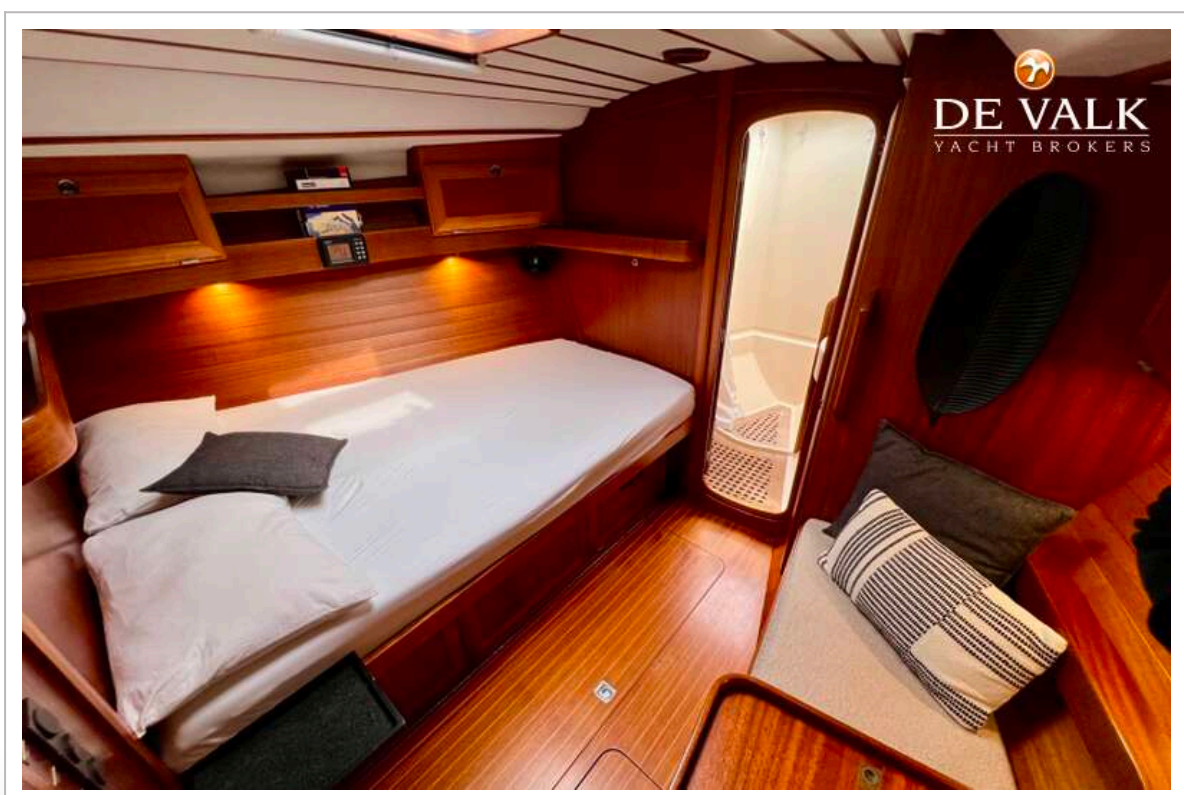


# SWEDEN YACHTS 50



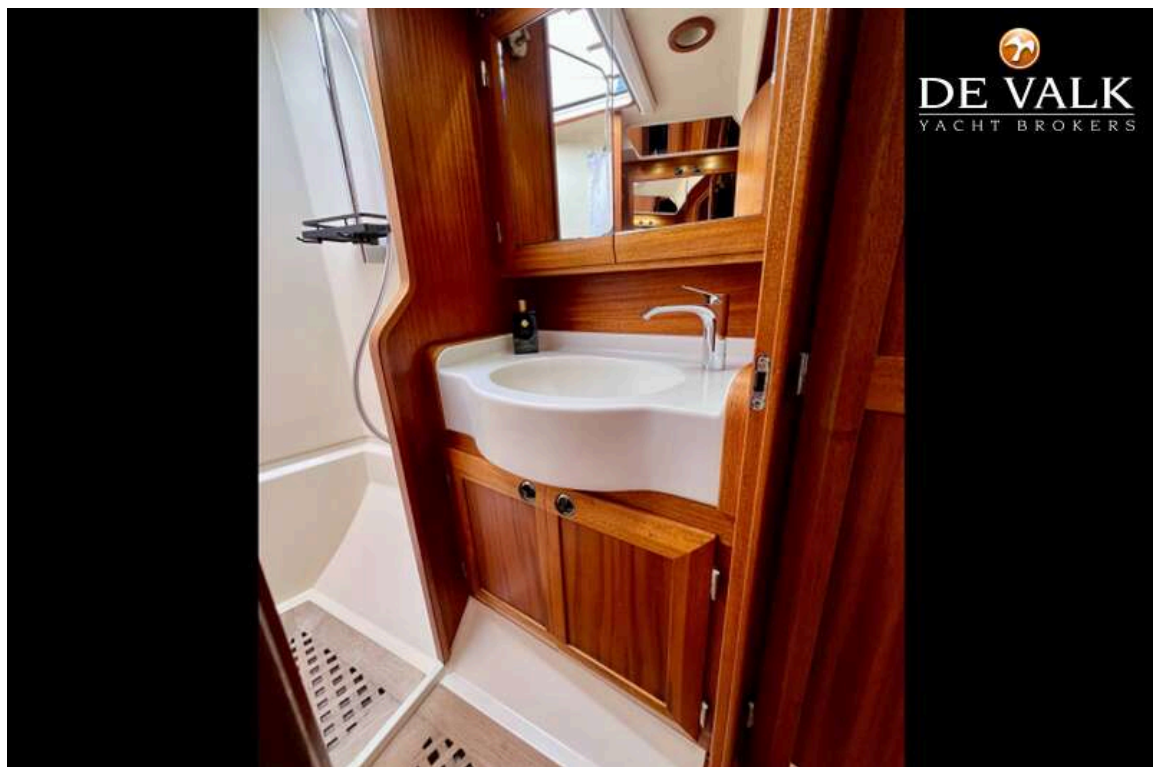
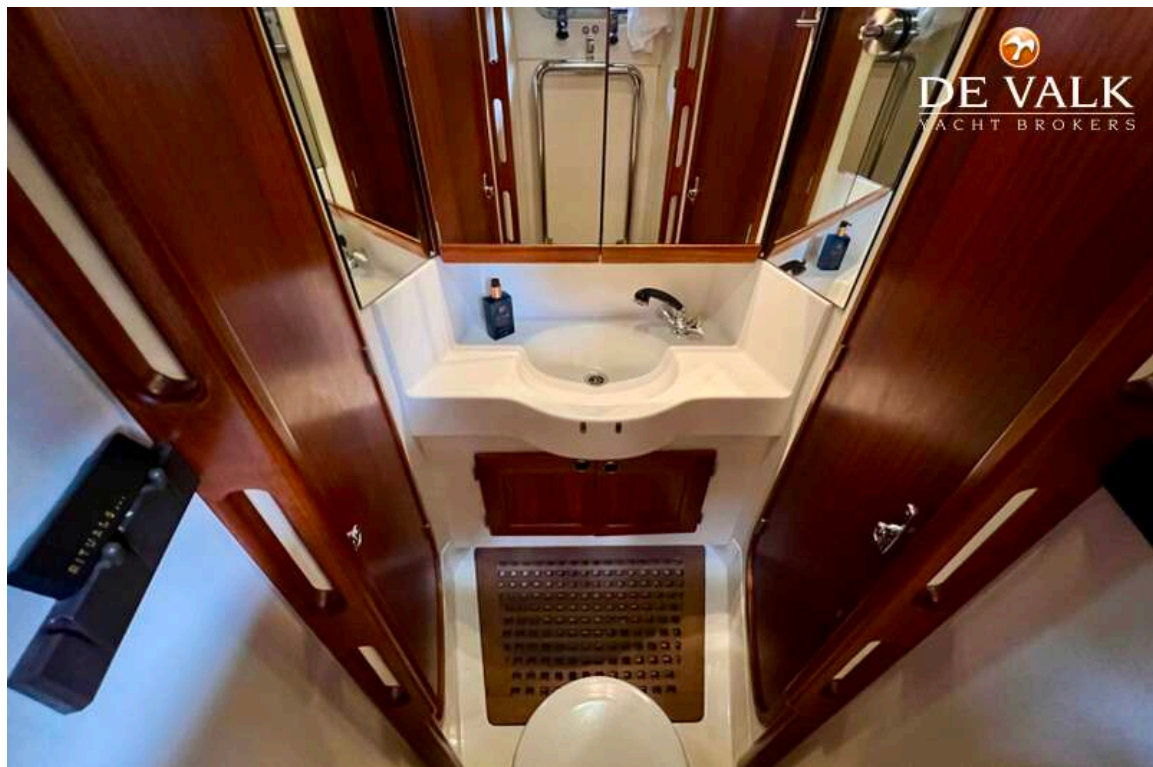


# SWEDEN YACHTS 50





# SWEDEN YACHTS 50



# SWEDEN YACHTS 50





# SWEDEN YACHTS 50

