



DE VALK
YACHT BROKERS



STEELER EXPLORER 50 PILOTHOUSE



DE VALK
YACHT BROKERS

STEELER EXPLORER 50 PILOTHOUSE

BROKER'S COMMENTS

A very luxurious and solidly built yacht! Exceptionally stable, both while sailing and at anchor, thanks to Humphree zero stabilization. Designed for living aboard, she features solar panels, a 16 kW generator and a water maker which brings total independence together with large fuel tanks providing a long range. The yacht is spacious, with ample storage and a large lazarette. Visible luxury throughout with exquisite finishes and carefully selected materials, combined with comfortable Auping mattresses and a well-equipped kitchen makes long stays on board an absolute pleasure.

Jörg Hellmich

SPECIFICATIONS

Dimensions	14.99 x 4.76 x 1.45 (m)	Builder	Steeler Yachts
Built	2024	Cabins	2
Material	Steel	Berths	5
Engine(s)	2 x Vetus Deutz VD6 diesel	Hp/Kw	2 x 170.00 (hp), 125.12 (kw)
Asking price	€ 1.890.000 (VAT Paid)	Lying	at sales office

CONTACT

Sales office	De Valk Almeria	Telephone	+34 950 497 825
Address	Puerto de Almerimar Darsena de la Batea 1, No. 42, 04711 Almerimar Spain	E-mail	almeria@devalk.nl

DISCLAIMER

These particulars are given in good faith as supplied but cannot be guaranteed.



STEELER EXPLORER 50 PILOTHOUSE

GENERAL

Model	STEELER EXPLORER 50 PILOTHOUSE
Type	motor yacht
LOA (m)	14,99
LWL (m)	14,72
Beam (m)	4,76
Draft (m)	1,45
Air draft (m)	7,00
Air draft min (m)	3,50
Headroom (m)	2,00
Year built	2024
Launched	March 2024
Builder	Steeler Yachts
Country	The Netherlands
Designer	Martin Bekebrede
Displacement (t)	40,2
Gross tonnage	45
CE norm	A
Hull material	steel
Hull colour	blue Midnight blue
Hull thickness (mm)	5/6
Hull shape	multi hard chine Grade A Steel
Superstructure material	steel In white colour
Superstructure (mm)	4
Deck plate thickness (mm)	4
Rubbing strake	stainless steel
Deck material	steel
Deck finish	synthetic teak Flexiteak
Superstructure deck finish	non-skid paint
Cockpit deck finish	synthetic teak Flexiteak
Antifouling (year)	2024



STEELER EXPLORER 50 PILOTHOUSE

Window frame	aluminium
Window material	double glazing With blinds
Deckhatch	1 x Aluminum (with Mosquito net)
Portholes	stainless steel With mosquito nets
Insulation	foam
Flybridge	yes
Flybridge cockpit cover	yes
Flybridge suncover	yes
Radar arch	collapsible On mast
Mast can be lowered	manual
Fuel tank (litre)	steel 2185 (integrated tank)
Fuel tank 2 (litre)	steel 1815 (integrated tank)
Level indicator (fuel tank)	Display
Freshwater tank (litre)	polyethylene 1100
Level indicator (freshwater)	Display
Blackwater tank (litre)	polyethylene 1 x 400
Level indicator (blackwater)	Display
Blackwater tank extraction	deck extraction + pump
Greywater tank (litre)	polyethylene 1 x 40
Wheel steering	hydraulic
Inside helm position	Pilothouse
Flybridge helm position	hydraulic
More info on hull	In new conditions
More info on paintwork	A2-AWL-Grip or AlexSeal
Extra info	Alarm, control & monitor system (ACMS)

ACCOMMODATION

Cabins	2
Berths	5
Layout	2 cabin version
Floor	PVC with underfloor heating



STEELER EXPLORER 50 PILOTHOUSE

Aft deck	yes
Pilot house/deck saloon	yes
Heating	central hot water Webasto Bluecool V Series
Heating 2	KABOLA HR400 c
Air-conditioning	yes
Chart table	yes
Convertible berth	In Pilothouse
Opening door to cockpit	yes
Opening door to aft deck	yes
Galley	Long shape
Countertop	corian
Sink	stainless steel Single
Cooker	induction Miele 2 hob + ss plate - teppanyaki
Extractor	yes
Microwave/oven combi	Miele (steam & hot air)
Fridge	Miele
Freezer	Miele (with icemaker)
Hot water system	220V + engine Webasto Isotemp boiler, type B75
Water pressure system	electrical
Dishwasher	Miele
Hot water tap	yes
Ice maker	In Miele Freezer
Owners cabin	double bed Kingsize
Bed length (m)	2,10 x 1,80
Wardrobe	hanging/drawers/shelves
Toilet	en suite
Toilet system	electric Planus (24V)
Wash basin	at the toilet
Shower	en suite
Extra info	Additional heater in bathroom for towels
Guest cabin 1	double bed Forward
Bed length (m)	2,10 x 1,50



STEELER EXPLORER 50 PILOTHOUSE

Wardrobe	hanging/drawers/shelves
Toilet	en suite (used as day toilet)
Toilet system	electric Planus (24V)
Wash basin	at the toilet
Washing machine/dryer combi	Miele WT1
Flybridge	yes

MACHINERY

No of engines	2
Make	Vetus Deutz
Type	VD6
HP	170
kW	125.12
Fuel	diesel
Year installed	2024
Maximum speed (kn)	10
Cruising speed (kn)	7
Consumption (l/hr)	12
Range (nm)	2000
Engine cooling system	freshwater heat exchanger
Drive	shaft
Shaft seal	yes
Engine controls	electrical Vetus
Gearbox	hydraulic ZF63A
Bowthruster	electric SidePower 150 KGF
Sternthruster	electric SidePower 150 KGF
Exhaust	watercooled
Propeller type	fixed Bronze
Propeller blades	4
Propeller shaft material	stainless steel Duplex
Shaft lubrication	water



STEELER EXPLORER 50 PILOTHOUSE

Manual bilge pump	yes
Electric bilge pump	3 x 24V Pumps
Electrical installation	12 & 24V system
Generator	wet exhaust Northern Lights 16 kW (50 Hz)
Running hours generator	151
Start battery	2 x 12V / 225 Ah AGM Mastervolt
Service battery	12 x 2V / 225 Ah AGM (1250 Ah total) Mastervolt
Generator battery	1 x 12V / 225 Ah AGM Mastervolt
Bowthruster battery	2 x 12V / 225 Ah AGM Mastervolt
Sternthruster battery	2 x 12V / 225 Ah AGM Mastervolt
Battery monitor	Steeler ship control (ACMS)
Battery charger	2 x Mastervolt Chargemaster Plus 24/110-2
Inverter	Mastervolt Ultra 24/4000 Sinewave
Solar panel	4 x 375W Jinka Solar panels
Diode battery combiners	2 x Mastervolt MPPT Solar Chargemaster 60 (12/24/60A)
Shorepower	with cable 230V (32A)
Insulation transformer	Mastervolt Mass GI7.0
Watermaker	HP System (120l/hr)
Stabilizers	0-speed
Extra info	Propellers protected by keel-soles

NAVIGATION

Compass on flybridge	Garmin
Electric compass	yes
Multi control display	Garmin ACMS
Depth sounder/log	Garmin ACMS
VHF	Garmin
VHF handheld	yes
Autopilot	Garmin
Radar/GPS/plotter	GPSMAP 1223 / GMR 18 HD+ DOME (4 kW Radar)
Electronic chart(s)	Navionics



STEELER EXPLORER 50 PILOTHOUSE

AIS transceiver	GARMIN AIS 800
EPIRB	OCEAN SIGNAL (RESCUEME EPIRB1)
Navigation lights	LED
Searchlight	yes
Extra info	3 wireless headsets for intern communication

EQUIPMENT

Cockpit cover	Full enclosure
Bimini	yes
Window cover	3 for front windows in wheelhouse
Cockpit cushions	yes
Cockpit table	Flexiteak
Bathing platform	yes
Boarding ladder	stainless steel
Transom door	yes
Deck shower	Hot & cold
Anchor	Pool 40 kg (ss & polished)
Anchor chain	80 m (13mm)
Chain counter	yes
Windlass	electrical Lofrans Falkon (24V / 1700W)
Capstan	yes
Deck crane	electric 500 kg capacity (on flybridge)
Sea railing	stainless steel
Railing side opening gates	yes
Life raft	container Saeco Sea Master
Life raft (pers)	4
Last life raft survey	2024
Rope cutter	2 units
Wiper	3 x 24V
Horn	air pressure
Fenders	yes



STEELER EXPLORER 50 PILOTHOUSE

Mooring lines	yes
Spare parts	yes
TV	43" screen retractable
DVD player	Philips
Sub-woofer	yes
Cockpit speakers	In Pilothouse
Speakers in salon	Fusion system
Speakers in cabin	Fusion system
Fire extinguisher	2kg in each room
Extinguisher in engine room	yes
Auto extinguisher system	yes
Extra info	Starlink Maritime Antenna



STEELER EXPLORER 50 PILOTHOUSE



STEELER EXPLORER 50 PILOTHOUSE



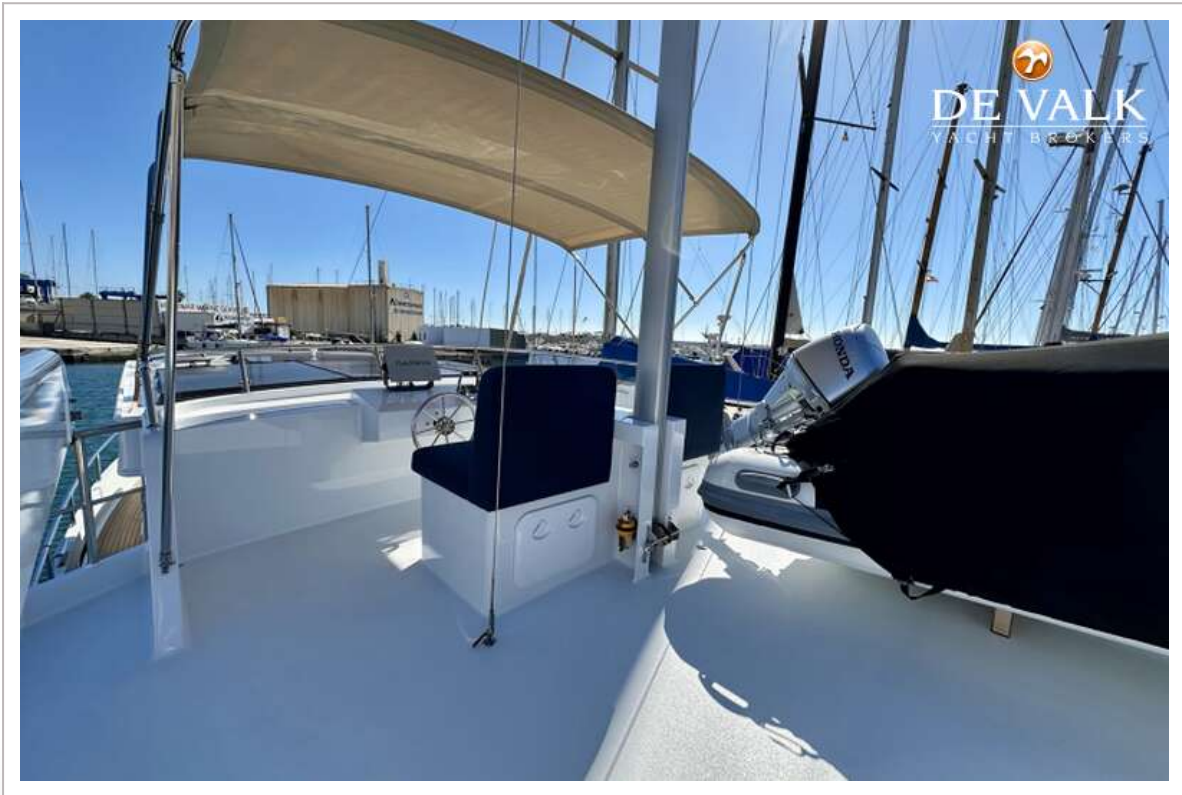
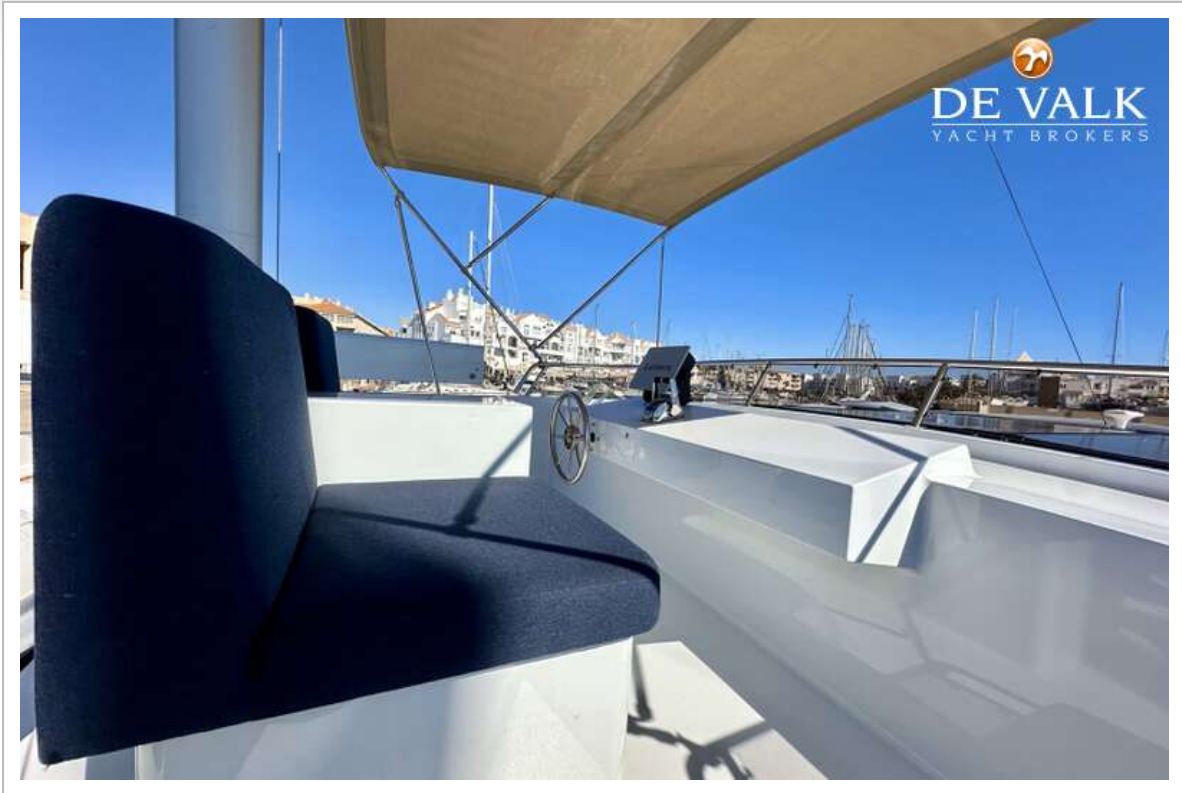
STEELER EXPLORER 50 PILOTHOUSE



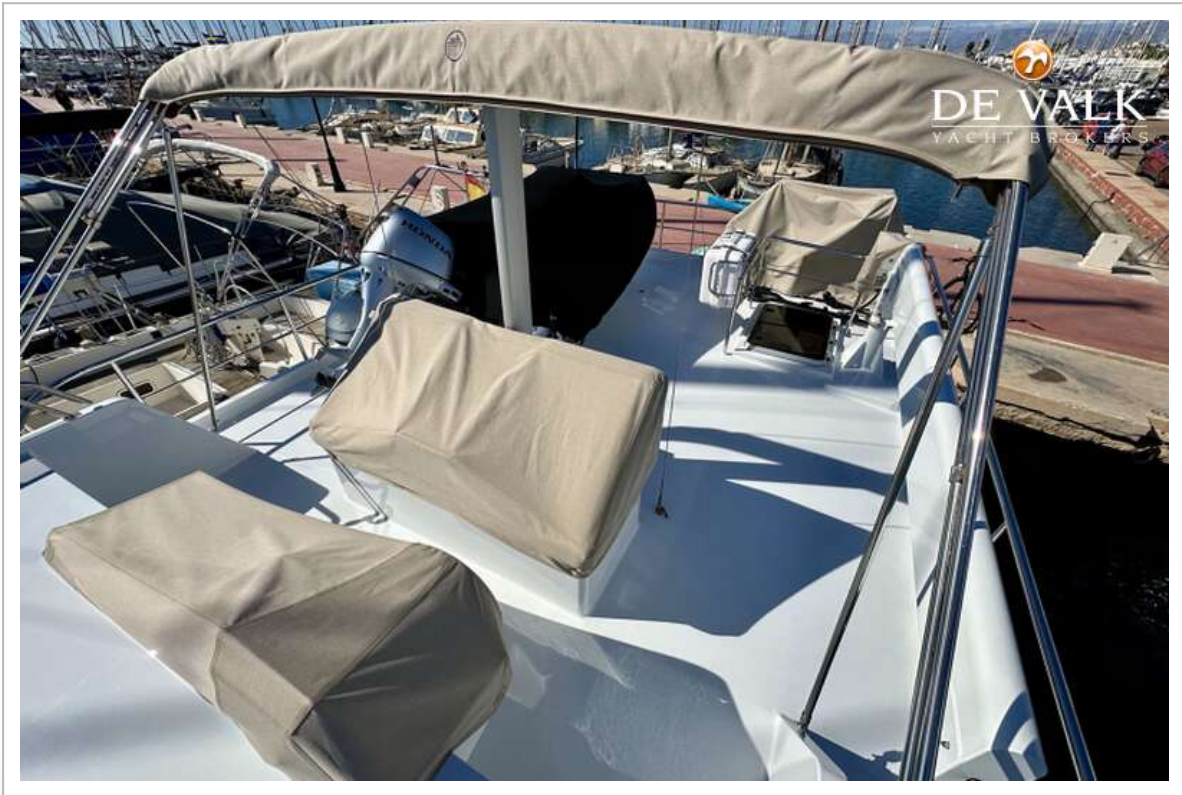
STEELER EXPLORER 50 PILOTHOUSE



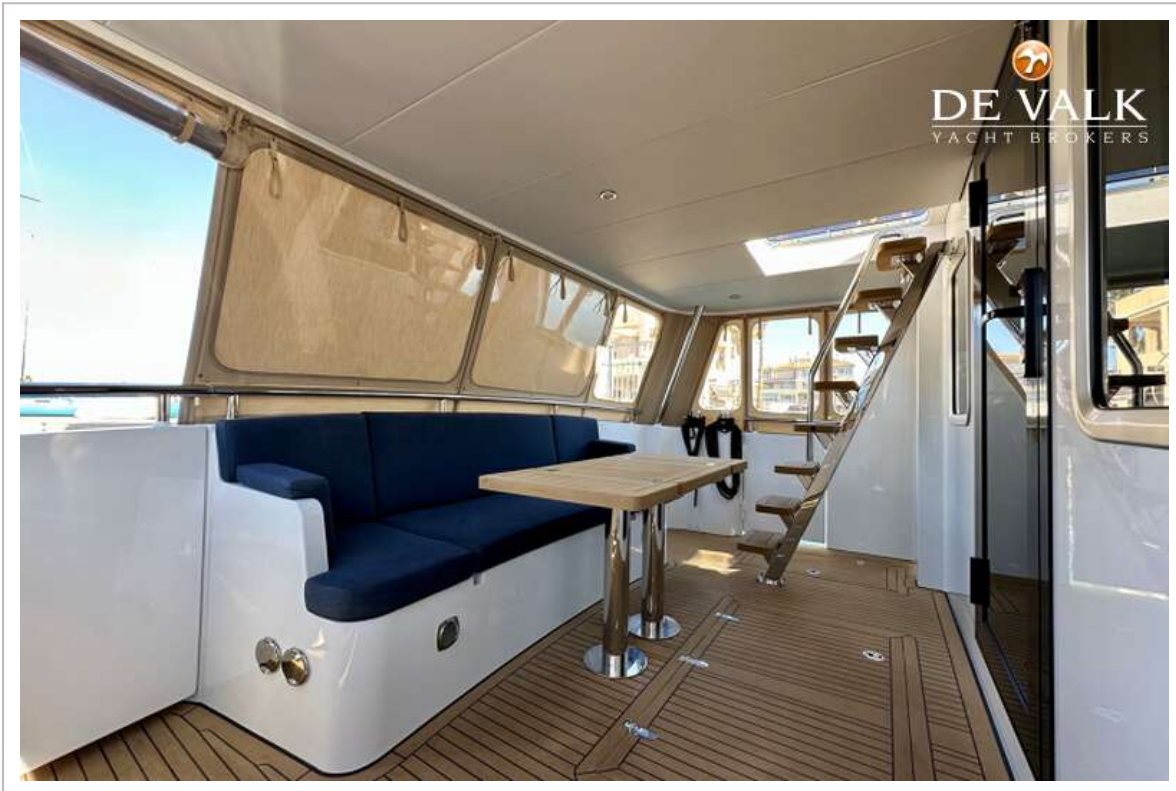
STEELER EXPLORER 50 PILOTHOUSE



STEELER EXPLORER 50 PILOTHOUSE



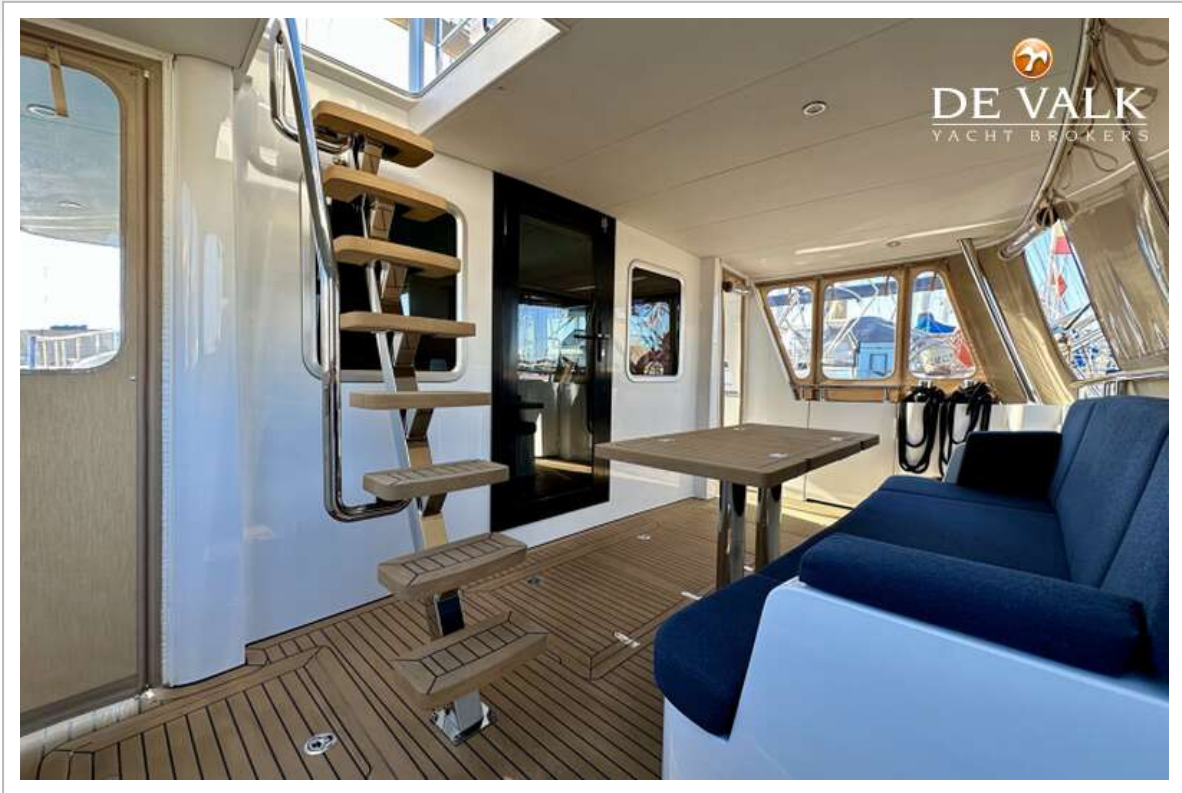
STEELER EXPLORER 50 PILOTHOUSE



STEELER EXPLORER 50 PILOTHOUSE



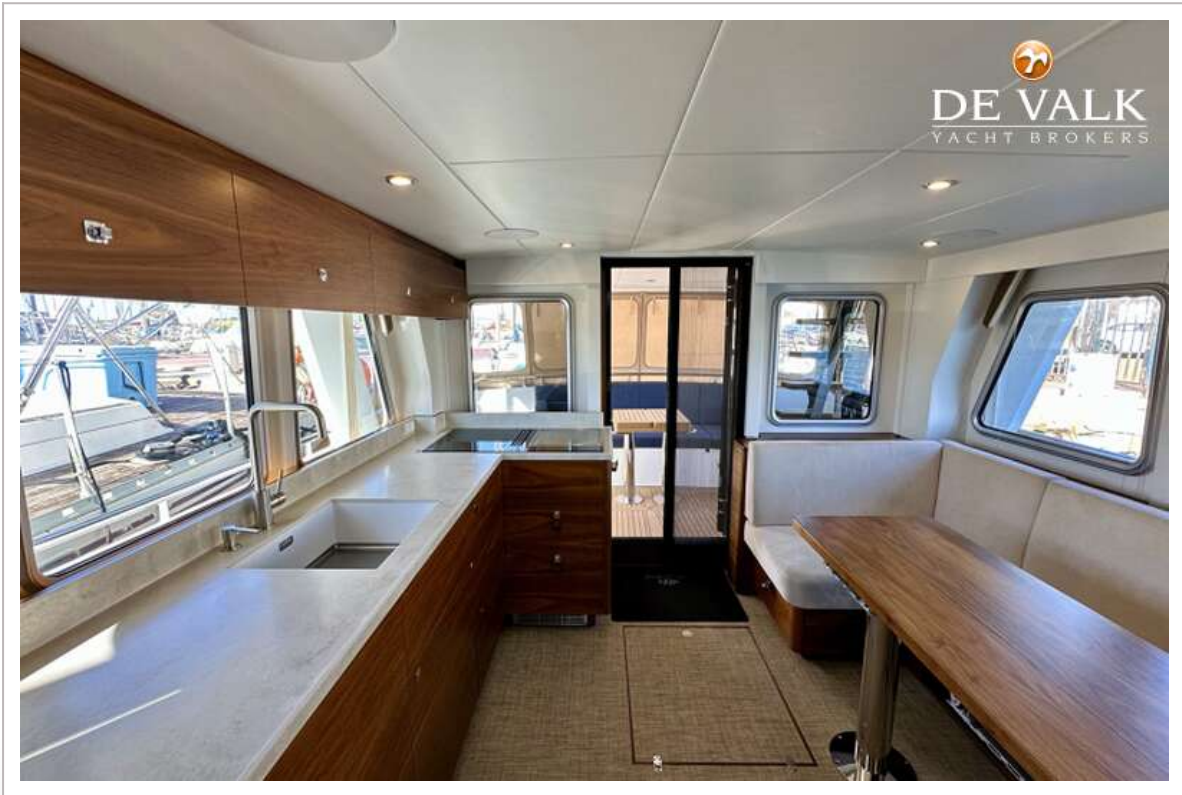
STEELER EXPLORER 50 PILOTHOUSE



STEELER EXPLORER 50 PILOTHOUSE



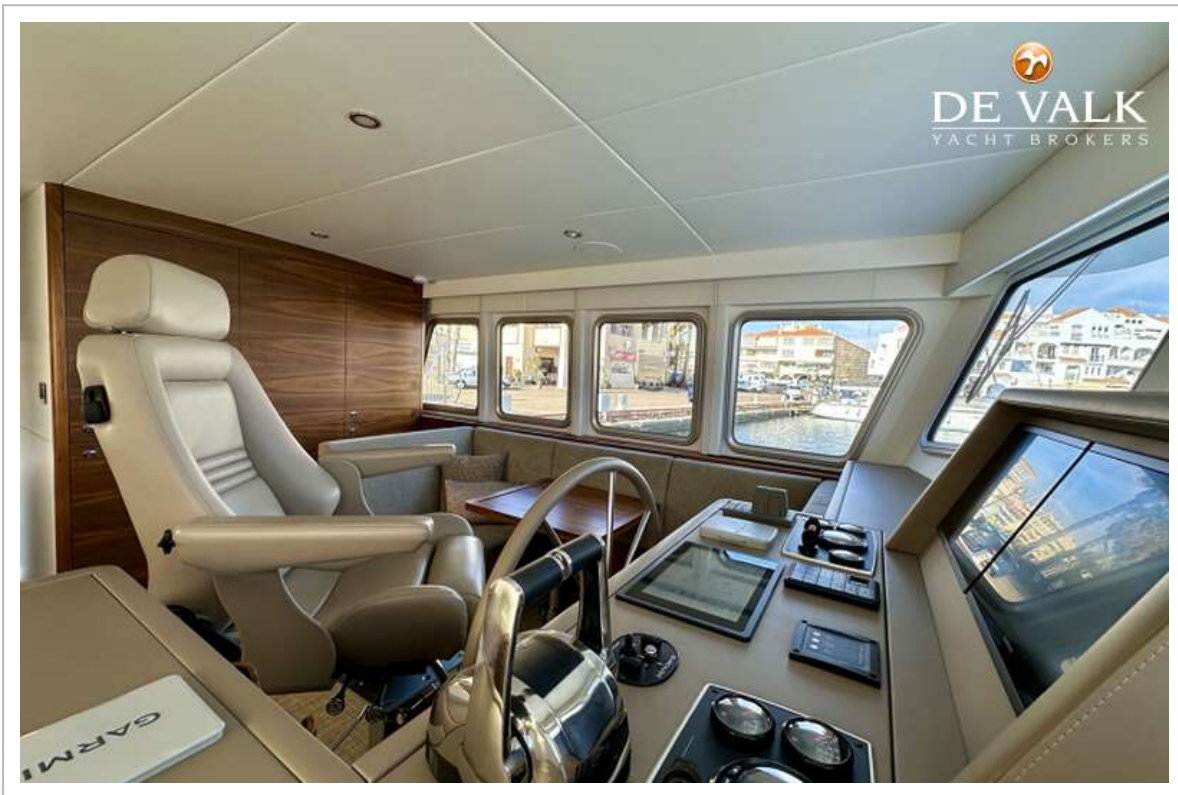
STEELER EXPLORER 50 PILOTHOUSE



STEELER EXPLORER 50 PILOTHOUSE



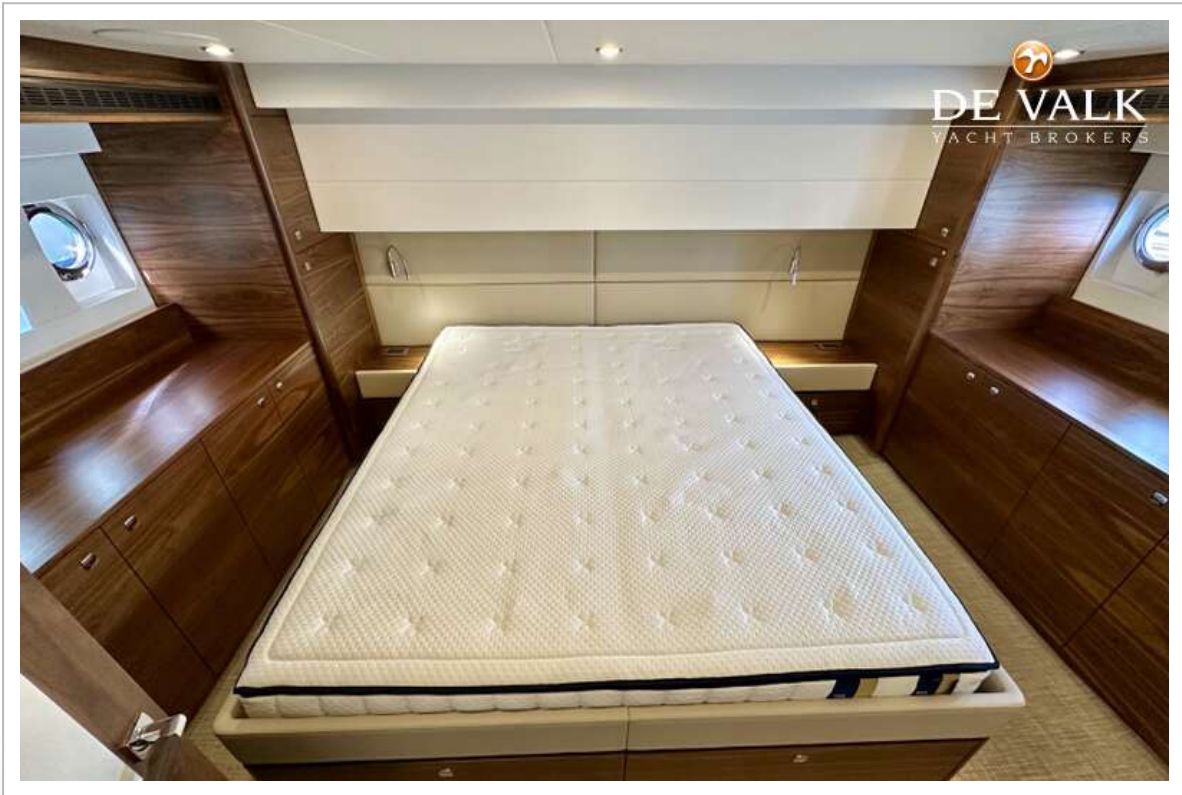
STEELER EXPLORER 50 PILOTHOUSE



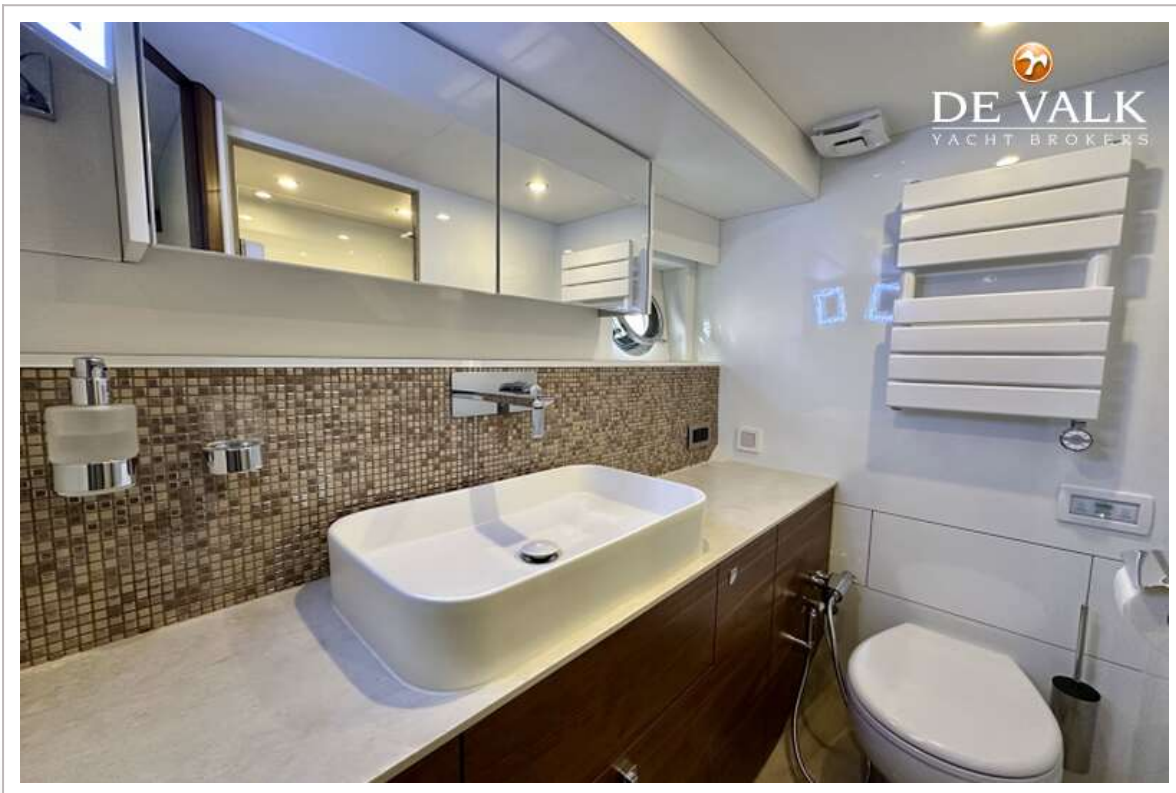
STEELER EXPLORER 50 PILOTHOUSE



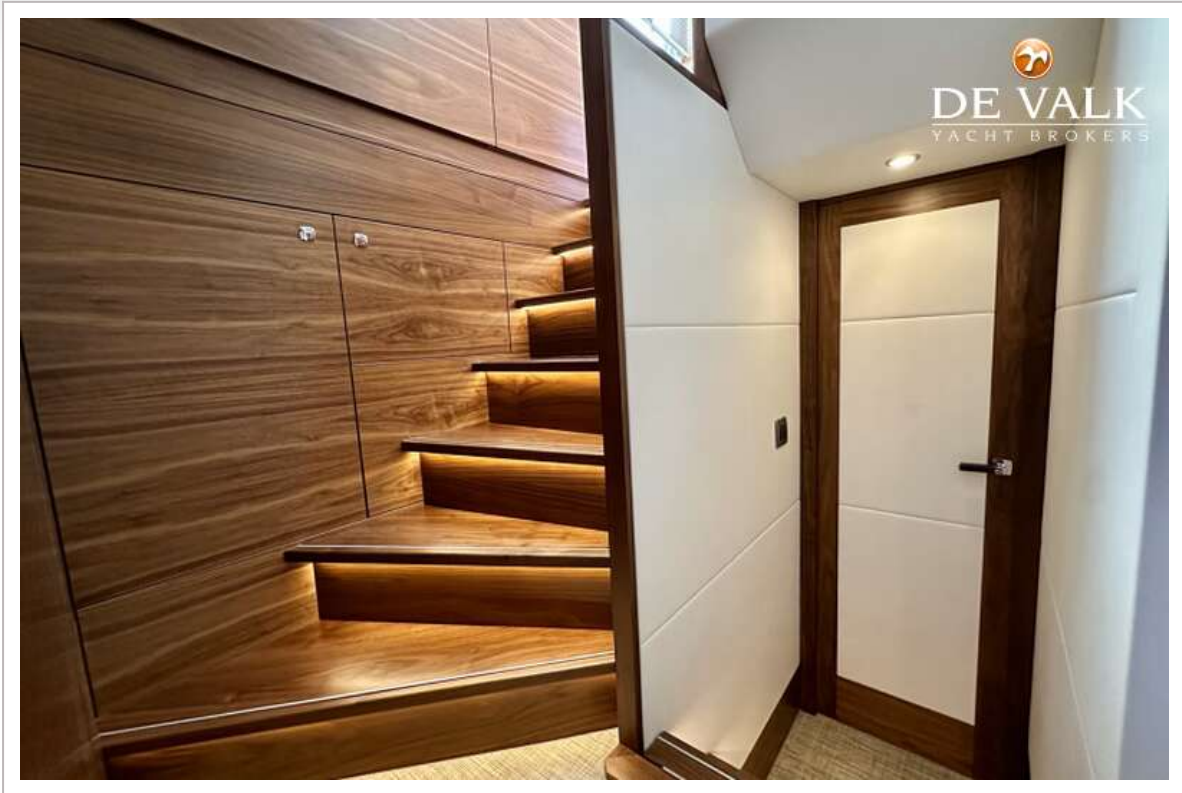
STEELER EXPLORER 50 PILOTHOUSE



STEELER EXPLORER 50 PILOTHOUSE



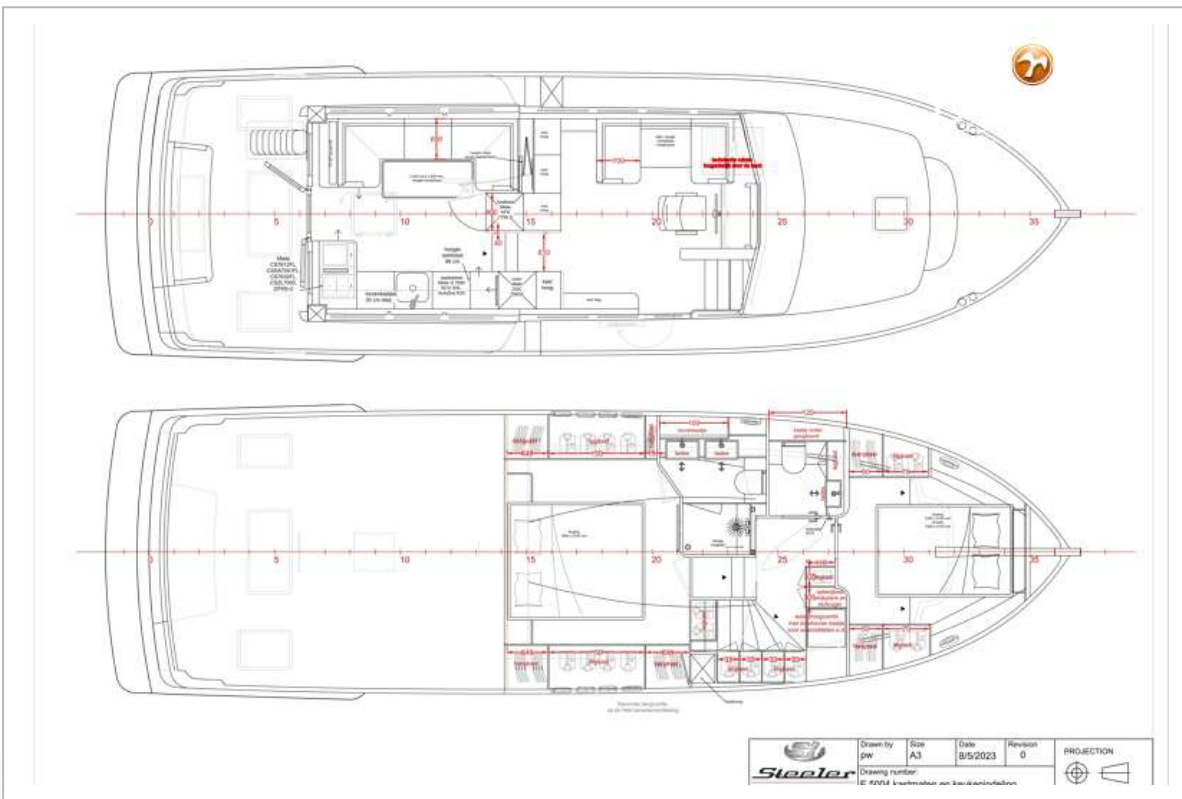
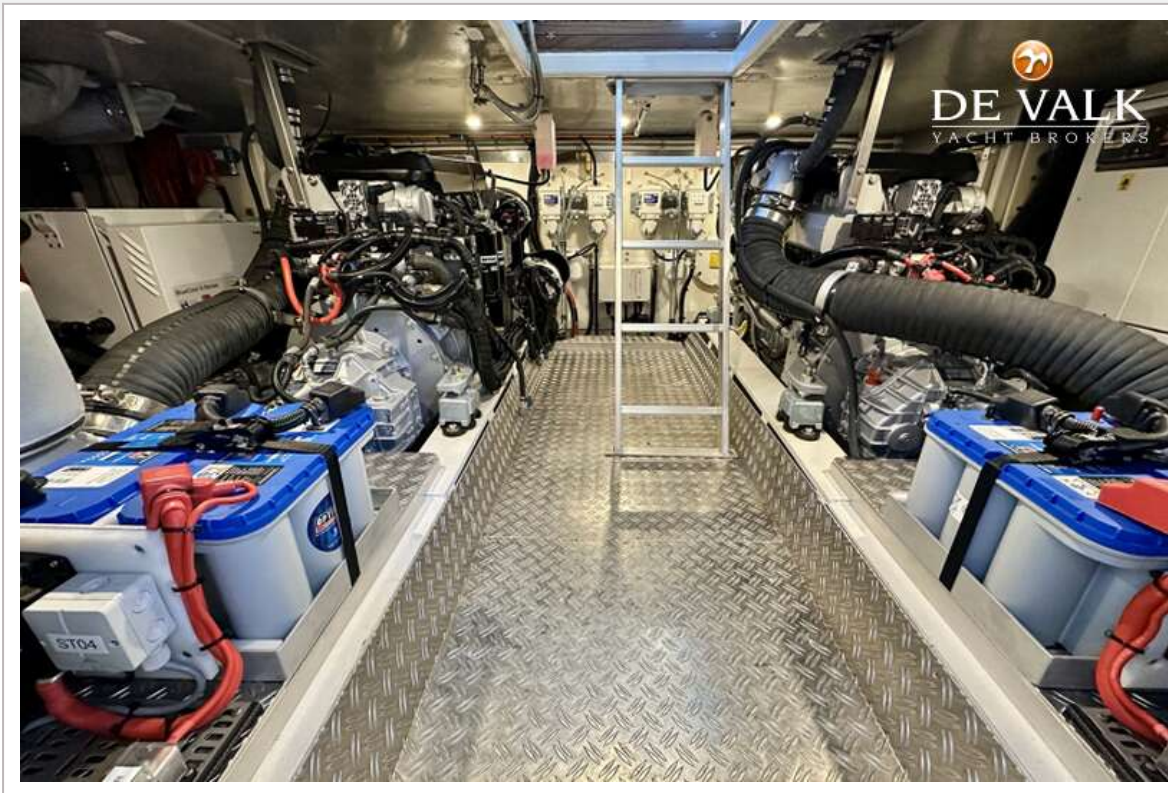
STEELER EXPLORER 50 PILOTHOUSE



STEELER EXPLORER 50 PILOTHOUSE



STEELER EXPLORER 50 PILOTHOUSE



STEELER EXPLORER 50 PILOTHOUSE

