



HANSEAT 70 II B



HANSEAT 70 II B

BROKER'S COMMENTS

The Hanseat 70 is a well build, solid sailing yacht. She is well behaving in all weather conditions. This one has been used as AirBnB home for some years. She is clean and maintained and comes with a full set of elder sails. If you are looking for a boat to DIY build your dream on, here it is. Located near Hamburg. Offers invited.

Jürgen Jacobs

SPECIFICATIONS

Dimensions	10.93 x 3.41 x 1.80 (m)	Builder	Asmus Werft
Built	1976	Cabins	2
Material	GRP	Berths	5
Engine(s)	1 x Peugeot diesel	Hp/Kw	45.00 (hp), 33.12 (kw)
Asking price	€ 29.800 (VAT Paid)	Lying	contact Hamburg

CONTACT

Sales office	De Valk Hamburg	Telephone	+49 40 46 000 999
Address	Domstraße 11 20095 Hamburg DE	E-mail	hamburg@devalk.nl

DISCLAIMER

These particulars are given in good faith as supplied but cannot be guaranteed.



HANSEAT 70 II B

GENERAL

Model	HANSEAT 70 II B
Type	sailing yacht
LOA (m)	10,93
Beam (m)	3,41
Draft (m)	1,80
Air draft (m)	15,00
Year built	1976
Builder	Asmus Werft
Country	Germany
Displacement (t)	6300
CE norm	NA
Hull material	GRP
Hull colour	Light blue
Keel type	yes
Superstructure material	GRP
Cockpit deck finish	non-skid paint
Antifouling (year)	2025
Window frame	stainless steel
Fuel tank (litre)	120L
Level indicator (fuel tank)	yes
Freshwater tank (litre)	100L
Level indicator (freshwater)	yes
Blackwater tank (litre)	50L
More info on hull	Underwater has been overhauled by professional shipyard
More info on paintwork	Professionally spraypainted hull

ACCOMMODATION

Cabins	2
Berths	5
Interior	teak



HANSEAT 70 II B

Layout	Classical layout
Saloon	Fresh upholstery
Headroom saloon (m)	187cm
Heating	diesel ducted hot air Eberspächer Diesel Heater
Chart table	yes
Galley	yes
Sink	yes
Cooker	induction Electric
Water pressure system	yes
Owners cabin	v-bed Fresh mattresses and covers
Bed length (m)	200cm x 140cm (max)
Bathroom	yes
Toilet	shared
Toilet system	manual
Wash basin	in the bathroom

MACHINERY

No of engines	1
Make	Peugeot
HP	45
kW	33.12
Fuel	diesel
Engine hours	5000
Drive	shaft
Engine controls	bowden cable
Propeller type	reversible
Propeller blades	3
Propeller shaft material	stainless steel
Manual bilge pump	yes
Electric bilge pump	yes
Start battery	yes



Service battery	yes
Battery charger	yes
Shorepower	with cable

NAVIGATION

Compass	yes
Navigation lights	yes
Extra info	Navigational electronics are recommended to be updated

EQUIPMENT

Sprayhood	yes
Cockpit cover	yes
Cockpit table	yes
Boarding ladder	yes
Anchor	yes
Anchor chain	yes
Railing side opening gates	One to port
Pushpit	yes
Pulpit	yes

RIGGING

Rigging	sloop
Standing rigging	wire
Material mast	aluminium
Mainsail	yes
Mainsail cover	yes
Jib I	yes
Jib II	yes
Genoa I	yes
Genoa II	yes



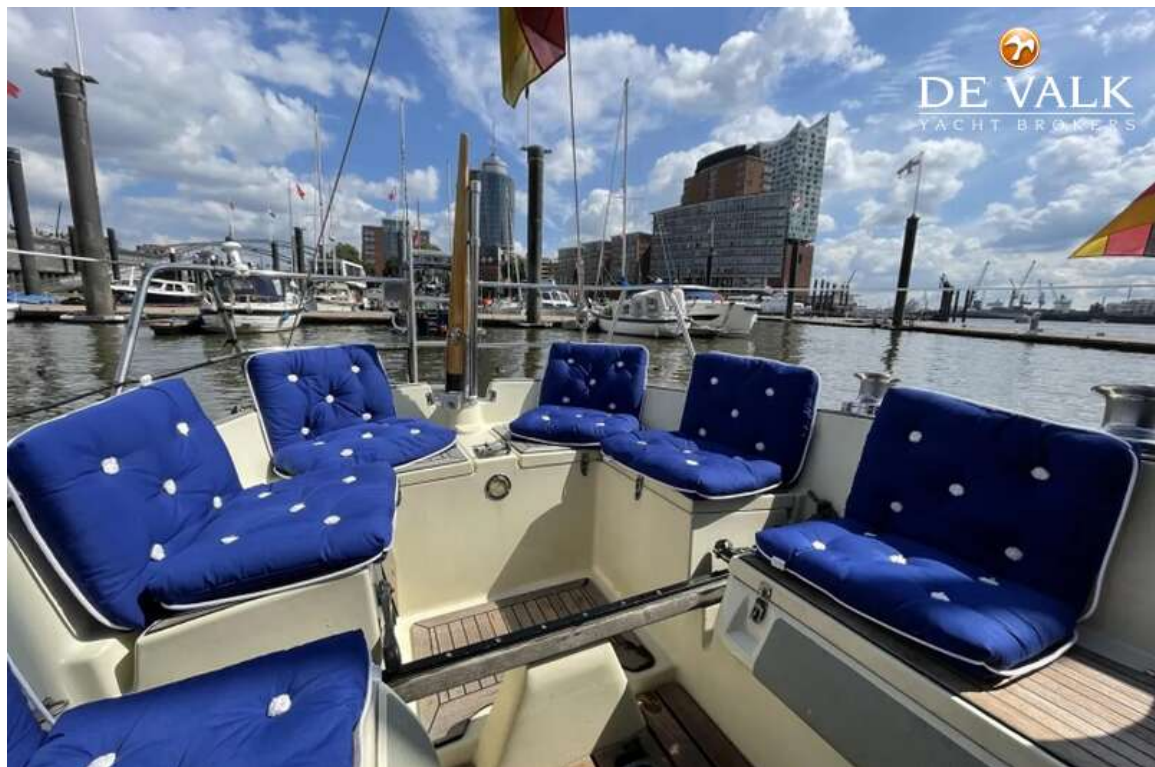
Genoa III	yes
Reefing System	slabreefing
Backstay adjuster	mechanical
Genoa sheetwinches	See pictures
Halyard winches	yes



HANSEAT 70 II B



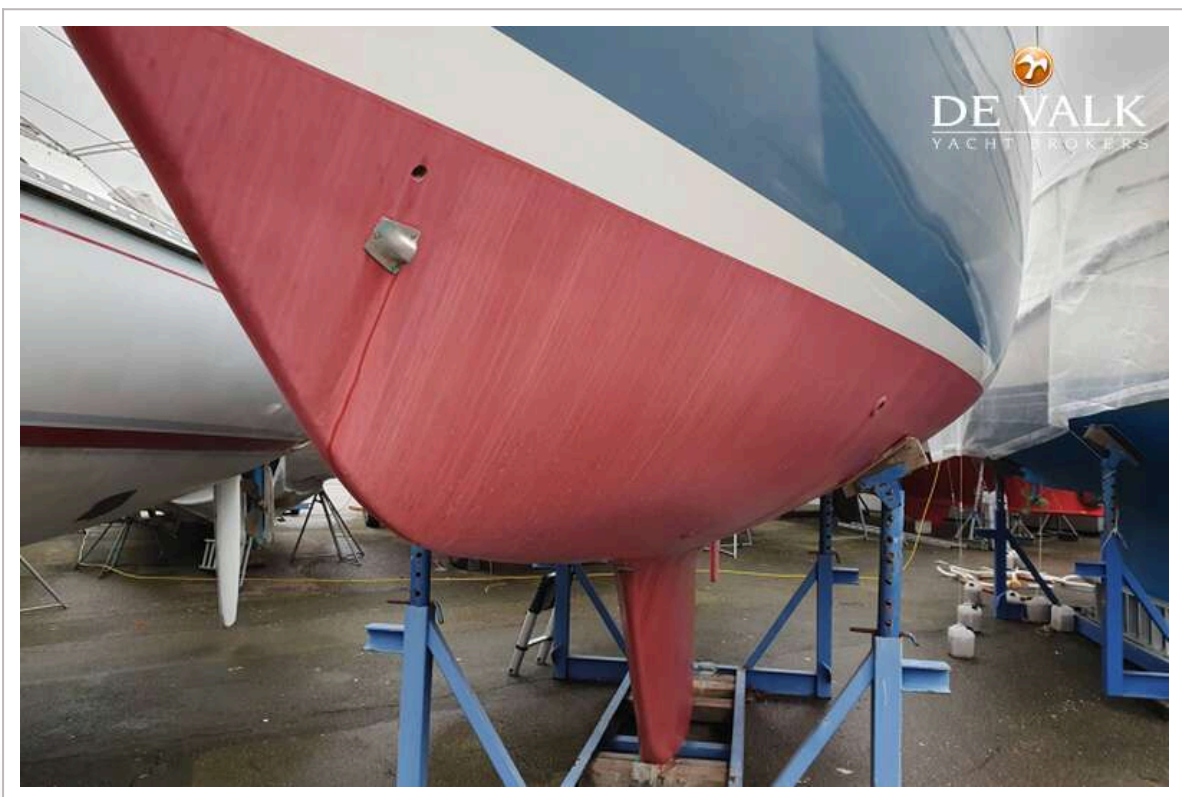
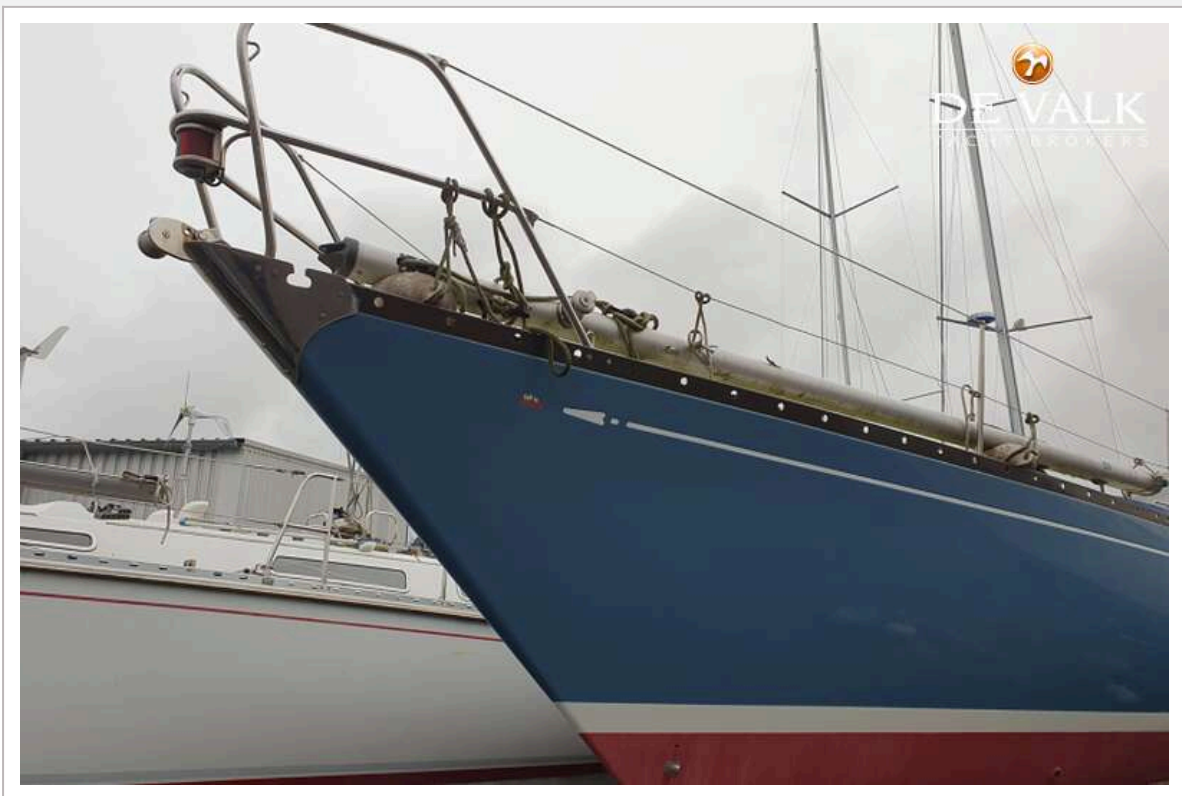
HANSEAT 70 II B



HANSEAT 70 II B



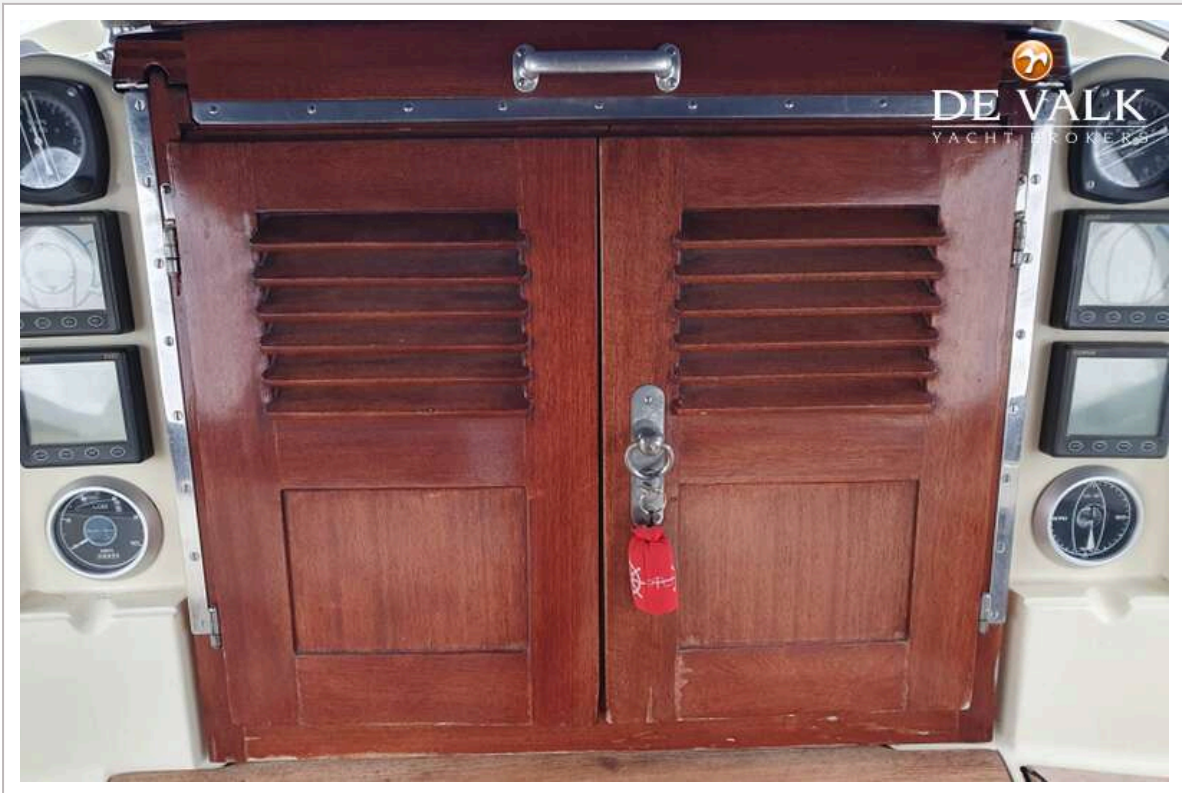
HANSEAT 70 II B



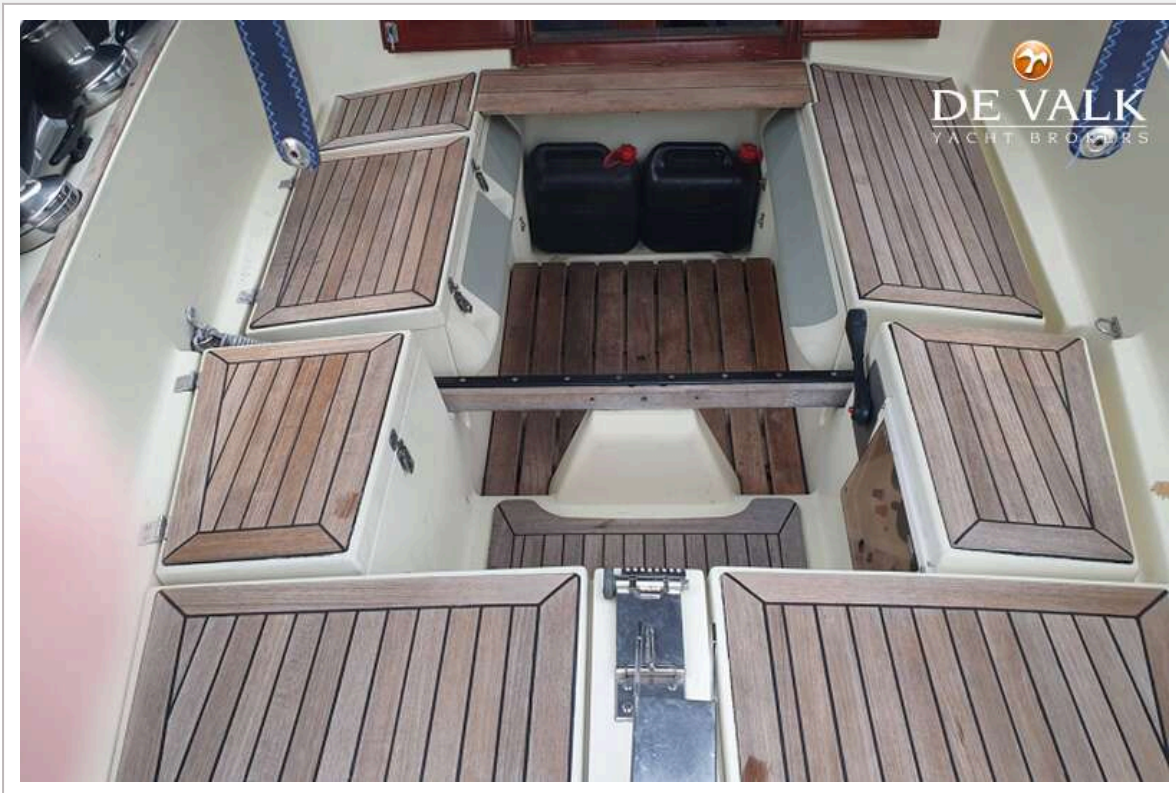
HANSEAT 70 II B



HANSEAT 70 II B



HANSEAT 70 II B





HANSEAT 70 II B



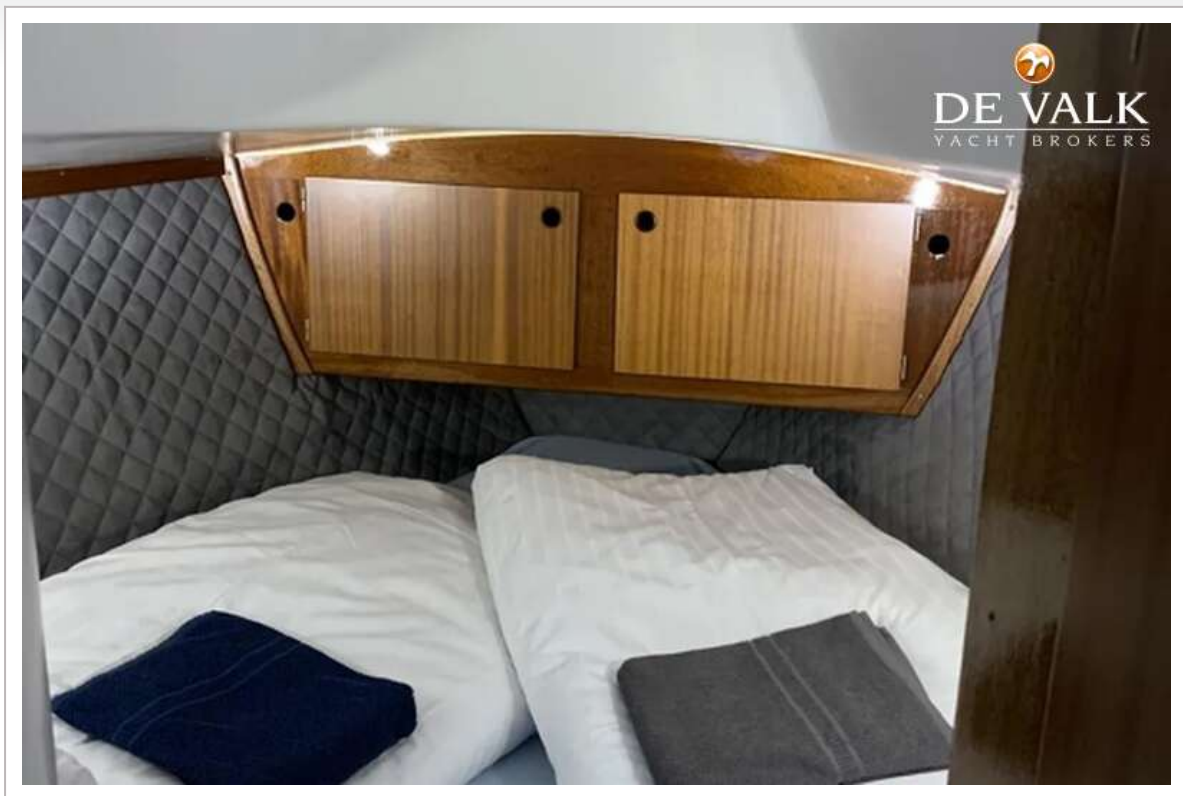
HANSEAT 70 II B



HANSEAT 70 II B



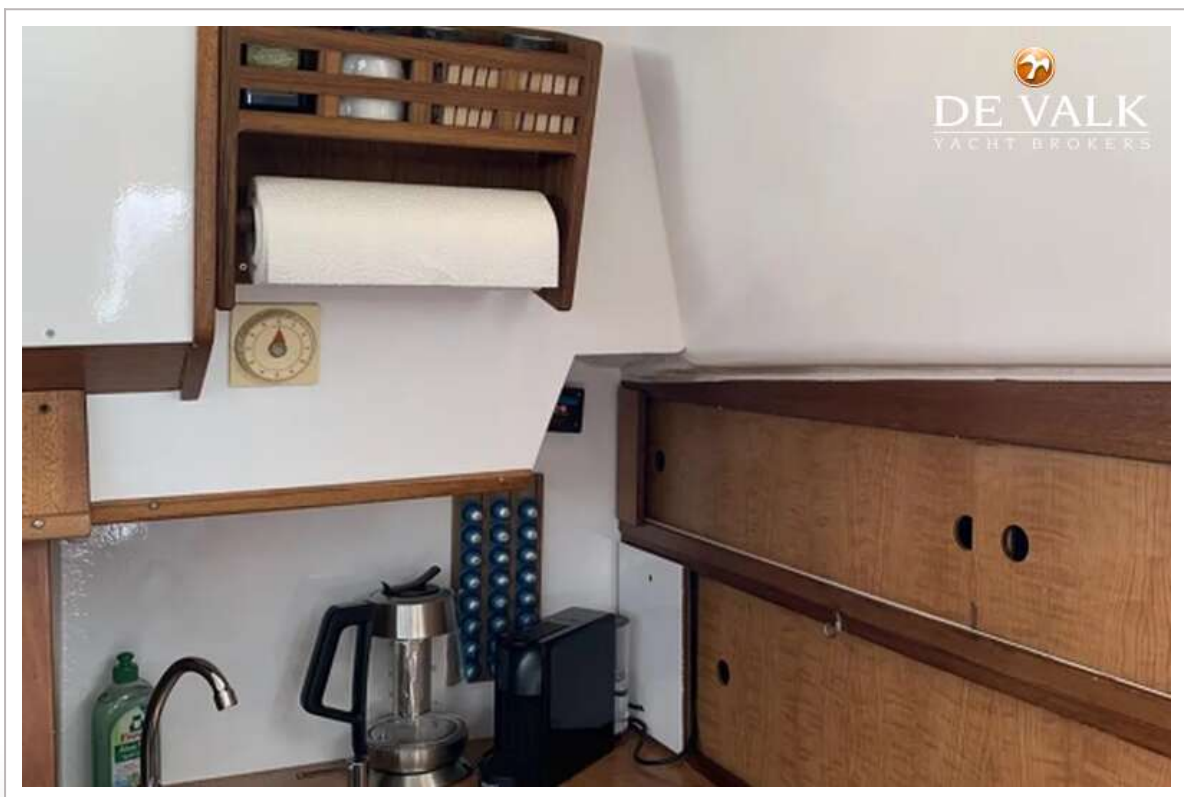
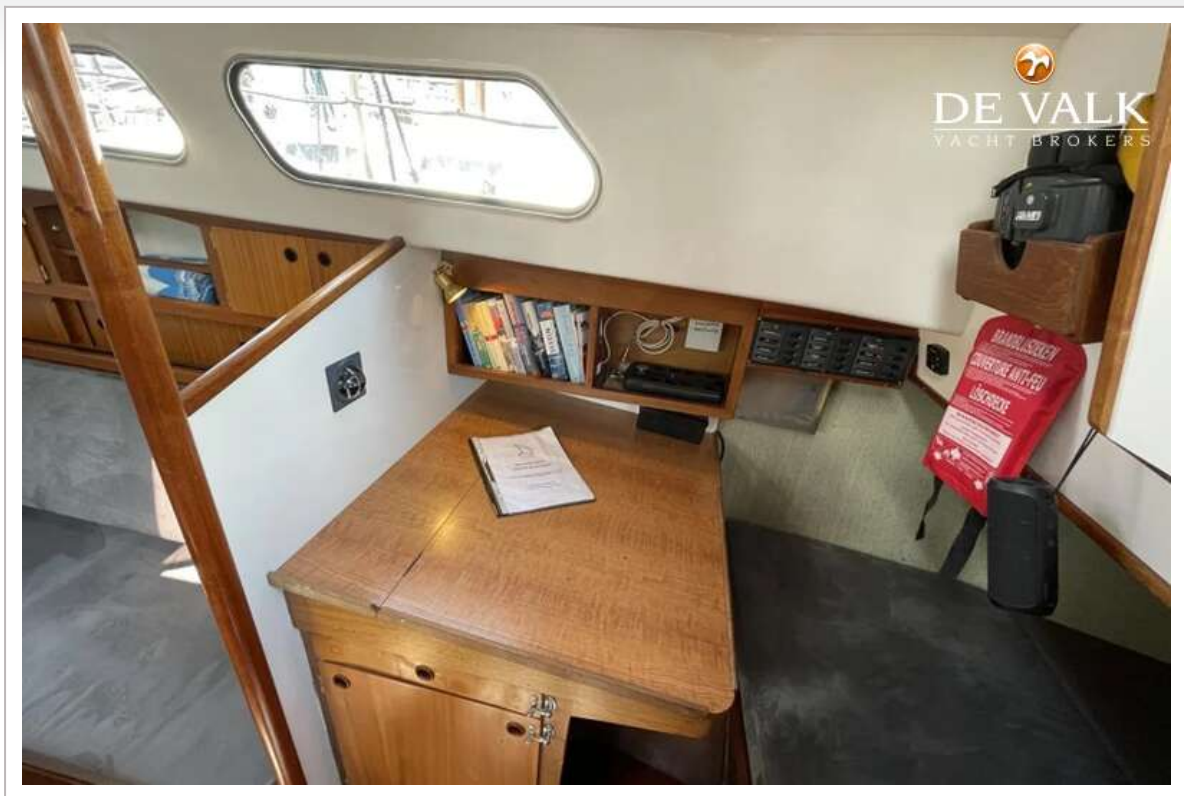
HANSEAT 70 II B



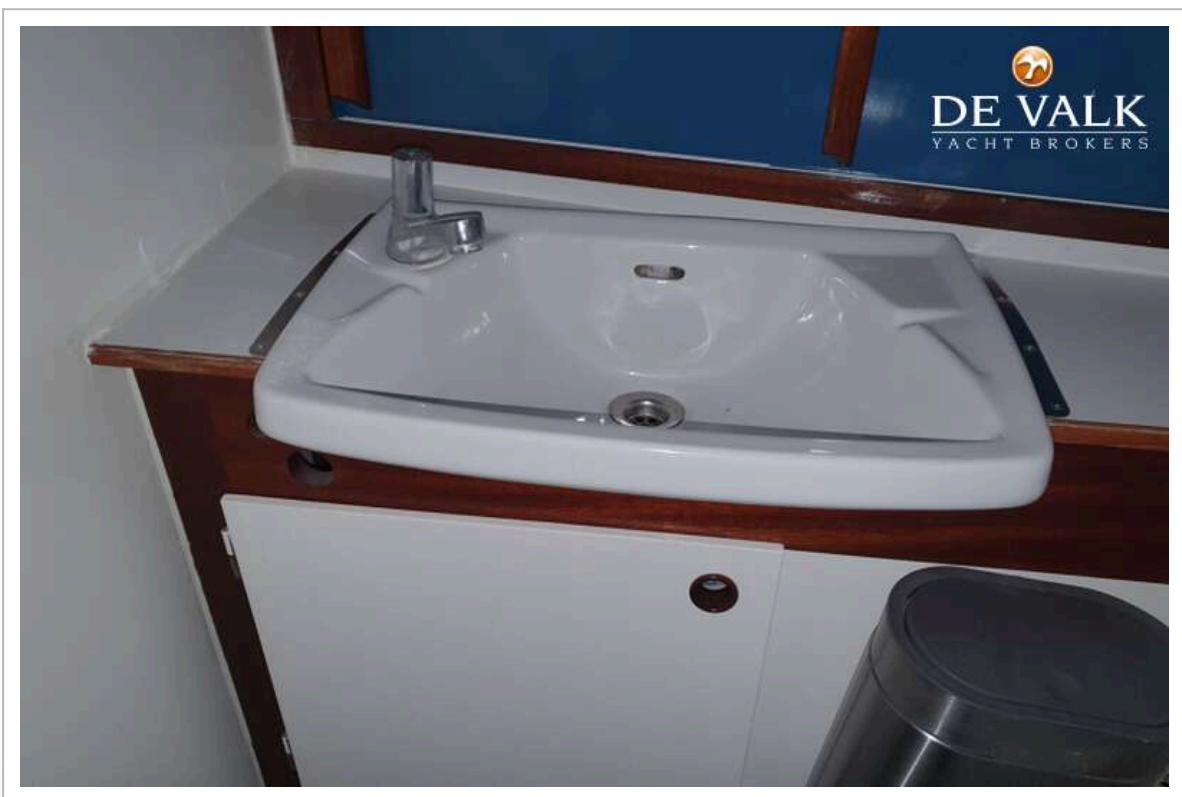
HANSEAT 70 II B



HANSEAT 70 II B



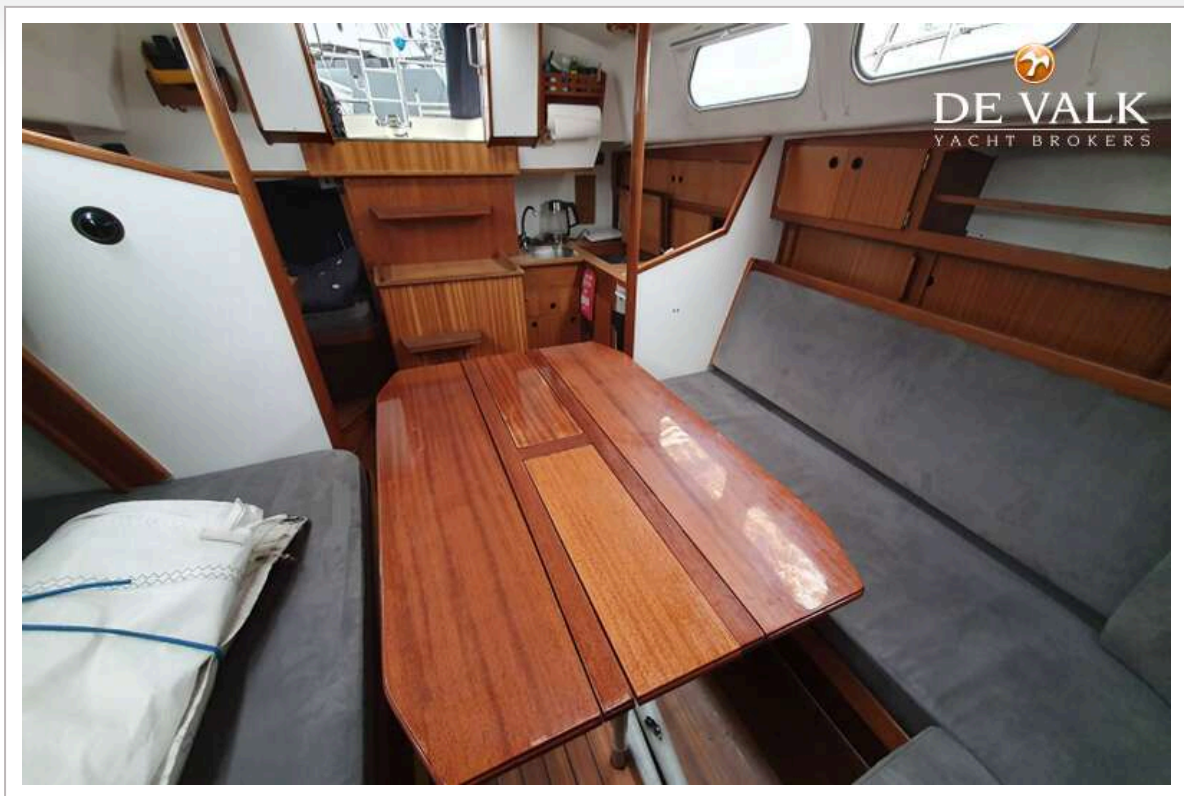
HANSEAT 70 II B



HANSEAT 70 II B



HANSEAT 70 II B



HANSEAT 70 II B



