



DE VALK
YACHT BROKERS

ASTONDOA 45 GL



DE VALK
YACHT BROKERS

BROKERAGE | CHARTER | BERTHS | FINANCE | INSURANCE | YACHT MANAGEMENT

ASTONDOA 45 GL

BROKER'S COMMENTS

The Astondoa 45 GL (1988) is a timeless classic that blends Spanish craftsmanship with a robust and elegant design, making it an excellent choice for those who value both style and performance. This yacht has been well maintained and ready to set sail immediately. Its spacious and well-appointed interior provides the perfect balance of comfort and functionality, ideal for extended cruises or weekend getaways. Powered by 2 Caterpillar engines, it ensures a smooth and stable ride at sea. Additionally, it comes with brand-new batteries.

Roberto Kelly

SPECIFICATIONS

Dimensions	14.02 x 4.20 x 1.20 (m)	Builder	Astondoa
Built	1988	Cabins	3
Material	GRP	Berths	7
Engine(s)	2 x Caterpillar DIESEL diesel	Hp/Kw	2 x 370.00 (hp), 272.32 (kw)
Asking price	€ 54.000 (VAT Not paid)	Lying	

CONTACT

Sales office	De Valk Barcelona	Telephone	+34932202825
Address	Barcelona region Barcelona Spain	E-mail	barcelona@devalk.nl

DISCLAIMER

These particulars are given in good faith as supplied but cannot be guaranteed.



ASTONDOA 45 GL

GENERAL

Model	ASTONDOA 45 GL
Type	motor yacht
LOA (m)	14,02
Beam (m)	4,20
Draft (m)	1,20
Headroom (m)	1,90
Year built	1988
Builder	Astondoa
Country	Spain
Displacement (t)	12,76
Hull material	GRP
Hull colour	white
Deck material	GRP
Deck finish	teak
Cockpit deck finish	teak
Window frame	aluminium
Window material	glass
Flybridge	yes
Radar arch	yes
Fuel tank (litre)	steel 400
Fuel tank 2 (litre)	steel 400
Freshwater tank (litre)	600
Inside helm position	yes
Flybridge helm position	yes

ACCOMMODATION

Cabins	3
Berths	7
Headroom saloon (m)	2
Air-conditioning	yes



Navigation center	yes
Chart table	yes
Dinette	yes
Galley	yes
Sink	yes
Cooker	yes
Oven	yes
Extractor	yes
Microwave	yes
Fridge	yes
Hot water system	yes
Water pressure system	yes
Owners cabin	yes
Wardrobe	yes
Bathroom	en suite
Toilet	en suite
Toilet system	electric
Shower	en suite
Guest cabin 1	twin single
Wardrobe	yes
Bathroom	en suite
Toilet	en suite
Toilet system	electric
Shower	en suite
Guest cabin 2	twin single
Wardrobe	yes
Bathroom	separate
Toilet	separate
Toilet system	electric
Shower	separate



MACHINERY

No of engines	2
Make	Caterpillar
Type	DIESEL
HP	370
kW	272.32
Fuel	diesel
Cruising speed (kn)	18
Engine hours	4600
Engine cooling system	freshwater heat exchanger
Drive	shaft
Generator	yes
Shorepower	yes

NAVIGATION

Compass	yes
Compass on flybridge	yes
Depth sounder	yes
Fish finder	yes
VHF	yes
Autopilot	yes
Radar	yes
GPS	yes
Plotter	yes
Plotter/GPS	yes
Radar/GPS	yes

EQUIPMENT

Boarding ladder	yes
Deck shower	yes



ASTONDOA 45 GL

Anchor	yes
Anchor chain	yes
Windlass	yes
Deck wash	yes
Dinghy	yes
TV	yes



ASTONDOA 45 GL



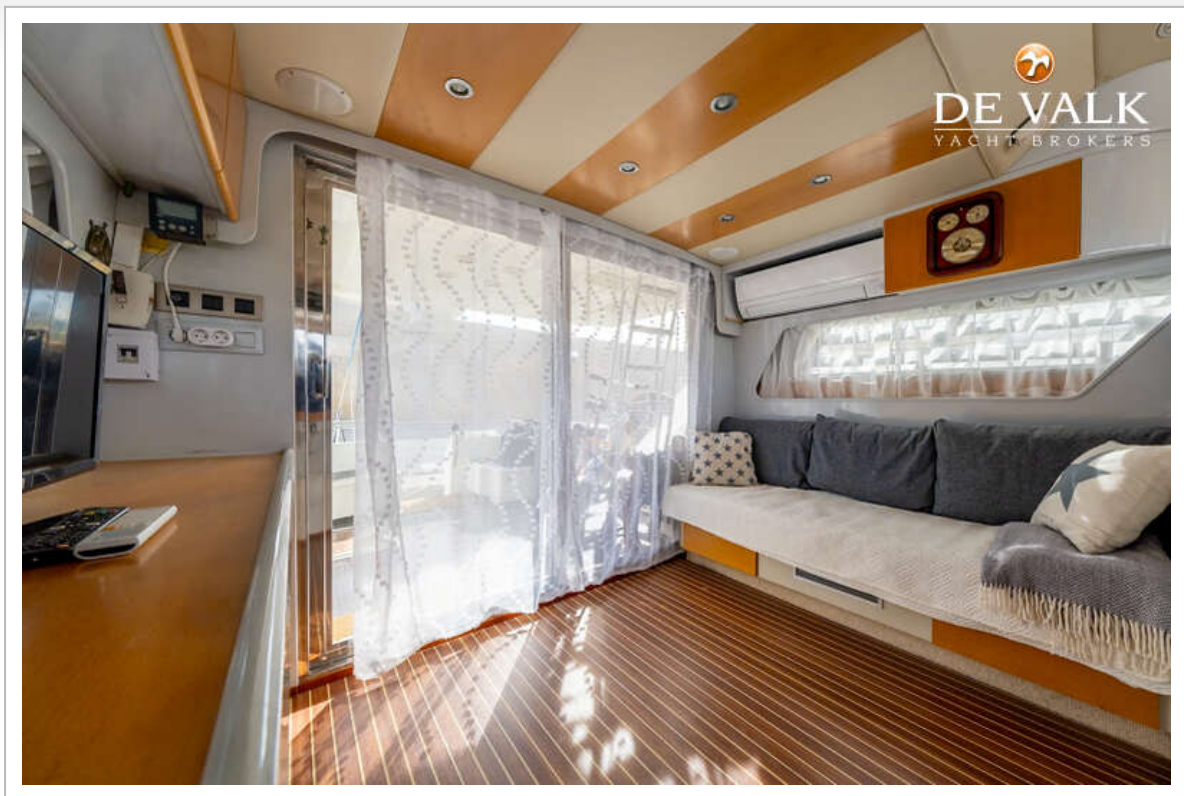
ASTONDOA 45 GL



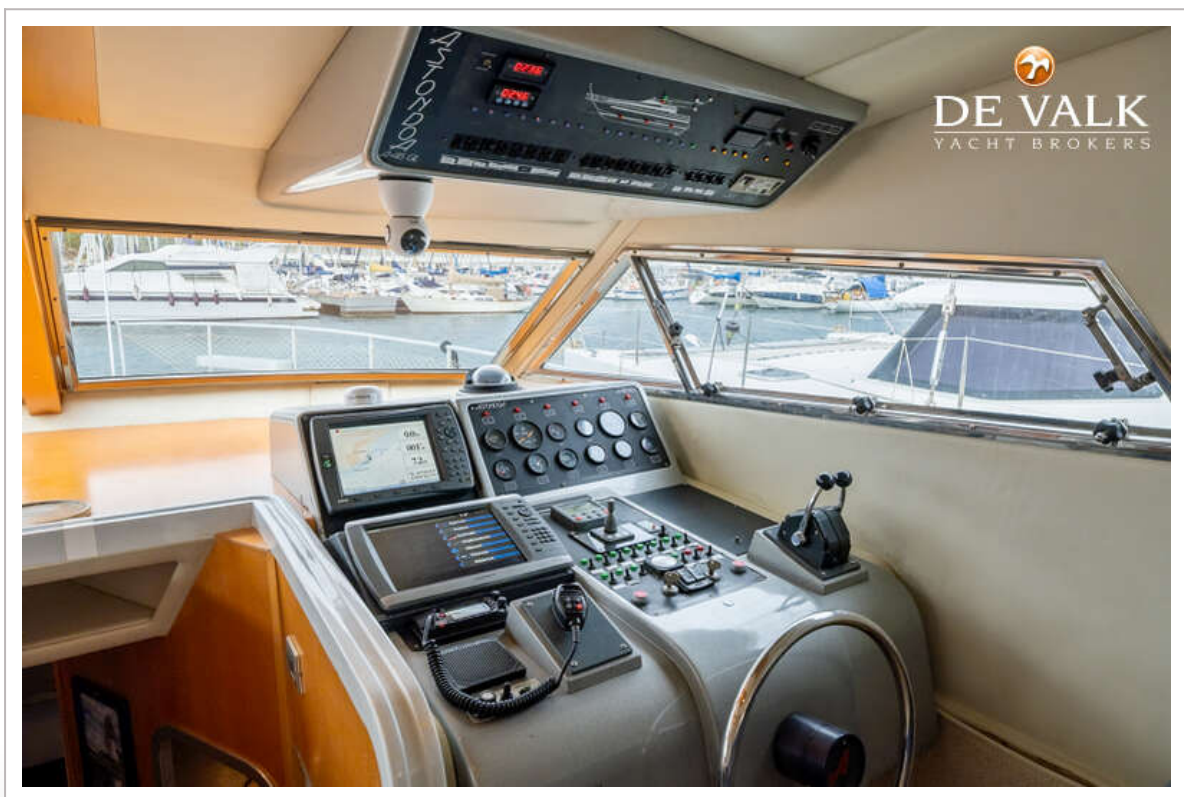
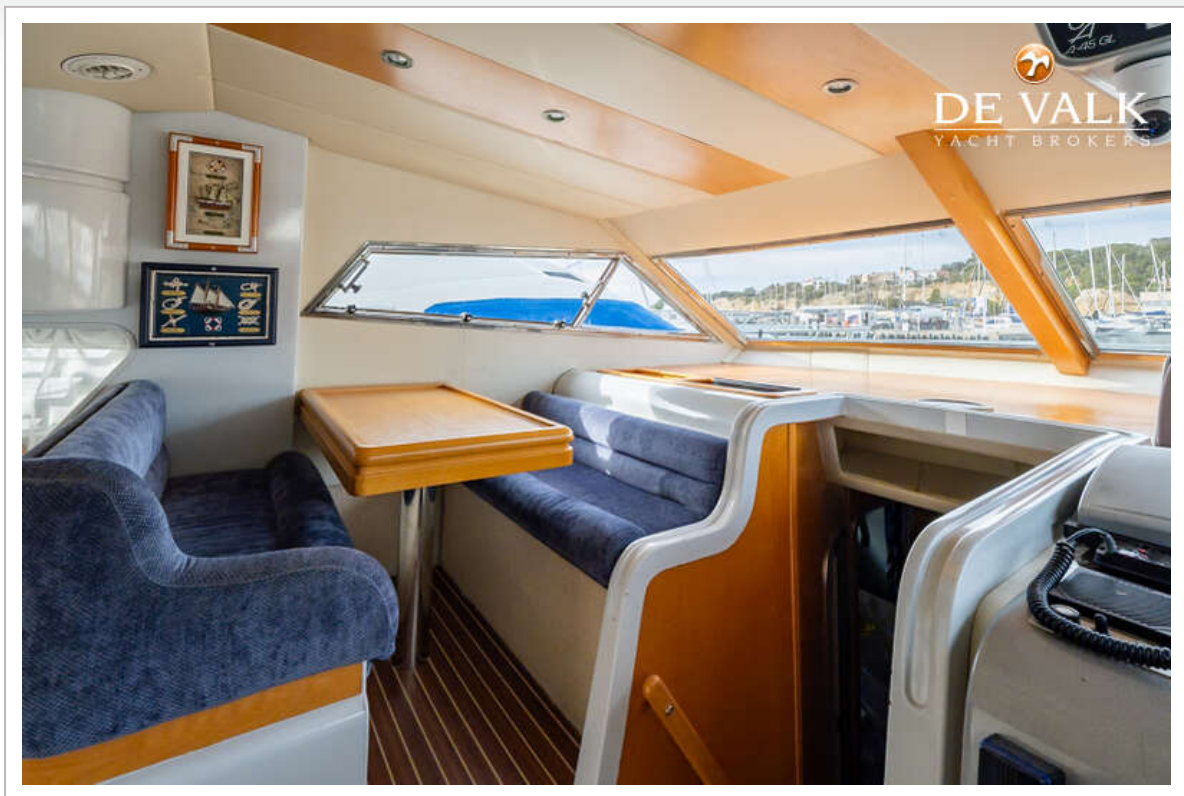
ASTONDOA 45 GL



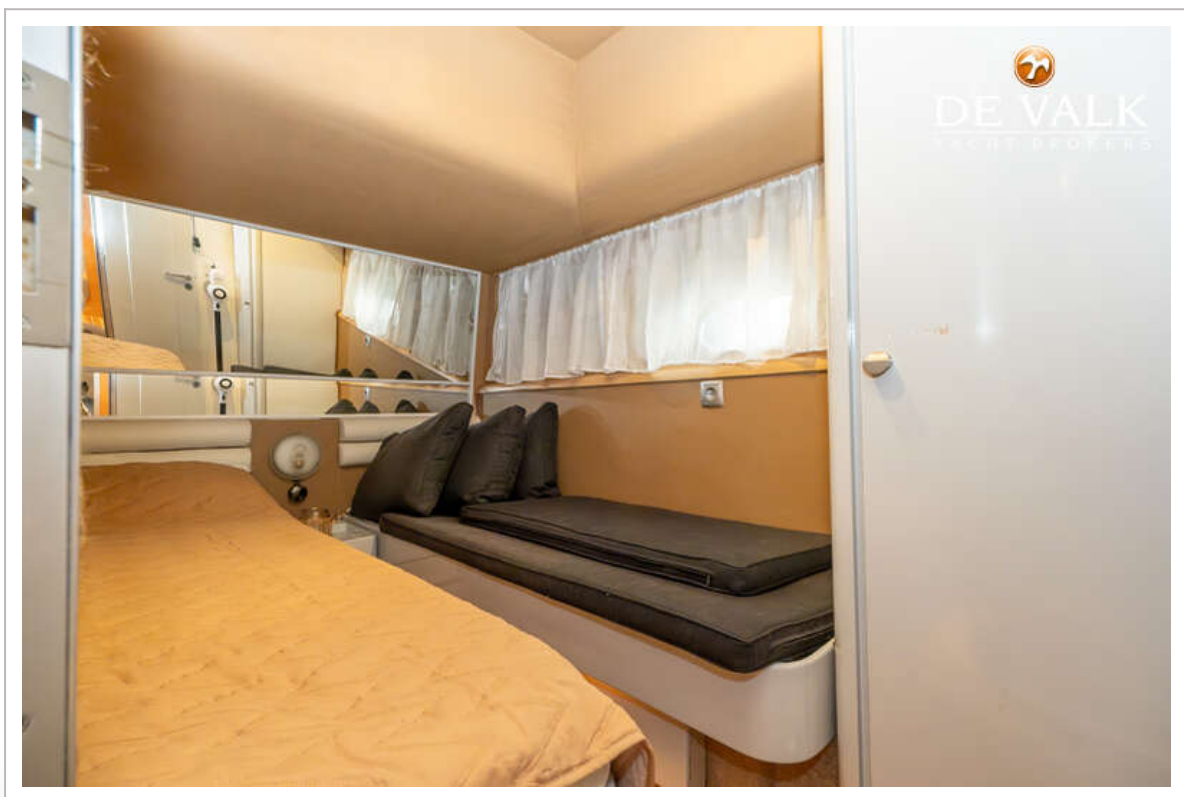
ASTONDOA 45 GL



ASTONDOA 45 GL



ASTONDOA 45 GL



ASTONDOA 45 GL



ASTONDOA 45 GL

