



DE VALK  
YACHT BROKERS



## BENETEAU OCEANIS 58



DE VALK  
YACHT BROKERS

# BENETEAU OCEANIS 58

## BROKER'S COMMENTS

This yacht is being sold via auction. Full details at

<https://brightauctions.com/en/lot-details/20579/beneteau-oceanis-58> 'RQ' is an impressive example of the Beneteau Oceanis 58. Only two private owners since new. Owner's layout with three double cabins, three bathrooms and a small crew cabin. This Beneteau Oceanis 58 has lots of recent upgrades and is ready to be your vessel for new adventures. Lying in the Netherlands.

*Joris van de Rijt*

## SPECIFICATIONS

<b>Dimensions</b>	18.24 x 4.99 x 2.70 (m)	<b>Builder</b>	Beneteau
<b>Built</b>	2010	<b>Cabins</b>	3
<b>Material</b>	GRP	<b>Berths</b>	10
<b>Engine(s)</b>	1 x Volkswagen TDI 140-5 diesel	<b>Hp/Kw</b>	140.00 (hp), 103.04 (kw)
<b>Asking price</b>	€ 100.000 (VAT Paid)	<b>Lying</b>	at sales office

## CONTACT

<b>Sales office</b>	De Valk Sint Annaland B.V.	<b>Telephone</b>	+31 166 601 000
<b>Address</b>	Koelhuisweg 4 4697 RM Sint Annaland NL	<b>E-mail</b>	sintannaland@devalk.nl

## DISCLAIMER

These particulars are given in good faith as supplied but cannot be guaranteed.



# BENETEAU OCEANIS 58

## GENERAL

<b>Model</b>	BENETEAU OCEANIS 58
<b>Type</b>	sailing yacht
<b>LOA (m)</b>	18,24
<b>LWL (m)</b>	16,43
<b>Beam (m)</b>	4,99
<b>Draft (m)</b>	2,70
<b>Air draft (m)</b>	27,50
<b>Headroom (m)</b>	2,10
<b>Year built</b>	2010
<b>Builder</b>	Beneteau
<b>Country</b>	France
<b>Designer</b>	Berret Racoupeau
<b>Displacement (t)</b>	21,6
<b>Ballast (tonnes)</b>	cast iron 7,1
<b>CE norm</b>	A
<b>Hull material</b>	GRP
<b>Hull colour</b>	white
<b>Hull shape</b>	round-bilged
<b>Keel type</b>	fin keel
<b>Superstructure material</b>	GRP
<b>Deck material</b>	GRP
<b>Deck finish</b>	non-skid moulded in
<b>Superstructure deck finish</b>	non-skid moulded in
<b>Cockpit deck finish</b>	teak
<b>Antifouling (year)</b>	05-2025
<b>Window material</b>	perspex All deck screens replaced 2022
<b>Deckhatch</b>	yes
<b>Portholes</b>	yes
<b>Radar arch</b>	non collapsible
<b>Fuel tank (litre)</b>	polyethylene 2 x 300



Level indicator (fuel tank)	yes
Fuel daytank (litre)	polyethylene 2 x 240
Freshwater tank (litre)	polyethylene 2 x 324 + 1 x 330
Level indicator (freshwater)	yes
Blackwater tank (litre)	polyethylene 3 x 73 + 1 x 50
Blackwater tank extraction	deck extraction + uw line
Wheel steering	cable steering
Emergency tiller	yes

## ACCOMMODATION

Cabins	3
Berths	10
Crew cabin	Accessible via deck hatch
Crew berths	2 x in crew cabin
Floor	woodprint
Aft deck	yes
Saloon	Additional 220V sockets
Headroom saloon (m)	2,10
Heating	Via air-conditioning, new coolwaterpump 2022
Air-conditioning	reverse cycle airco Stbd unit new 2023, all serviced 2024
Chart table	yes
Aft Cabin	2 x
Dinette	yes
Dinette to convert into berth	Can be electrical adjusted
Galley	yes
Countertop	corian
Sink	stainless steel + salt water tab
Cooker	calor gas
Oven	yes
Extractor	yes
Microwave	yes



# BENETEAU OCEANIS 58

<b>Fridge</b>	2 x, seals new 2023
<b>Freezer</b>	Vitrifrigo 110 liter in galley (new 2025)
<b>Hot water system</b>	220V + engine + extra 5 liter boiler under galley sink
<b>Water pressure system</b>	electrical
<b>Dishwasher</b>	Not installed, supplied loose on board
<b>Crockery</b>	yes
<b>Owners cabin</b>	double bed
<b>Bed length (m)</b>	2,10 x 1,70
<b>Wardrobe</b>	hanging/drawers/shelves
<b>Bathroom</b>	en suite New faucet 2022
<b>Toilet</b>	en suite
<b>Toilet system</b>	electric
<b>Wash basin</b>	in the bathroom
<b>Shower</b>	en suite
<b>Guest cabin 1</b>	double bed Port-side
<b>Bed length (m)</b>	2,00 x 1,50
<b>Wardrobe</b>	hanging and shelves
<b>Bathroom</b>	en suite New faucet 2022
<b>Toilet</b>	en suite
<b>Toilet system</b>	electric
<b>Wash basin</b>	in the bathroom
<b>Shower</b>	en suite
<b>Guest cabin 2</b>	double bed Can be converted into 2 separate beds
<b>Bed length (m)</b>	2,00 x 1,70 (as a 2 person bed)
<b>Wardrobe</b>	hanging and shelves
<b>Bathroom</b>	en suite
<b>Toilet</b>	en suite
<b>Toilet system</b>	electric
<b>Wash basin</b>	in the bathroom
<b>Shower</b>	en suite
<b>Crew cabin(s)</b>	1 x under deck hatch
<b>Toilet (crew)</b>	En suite



Toilet system	electric
Wash basin	in the cabin
Shower (crew)	En suite
Washing machine/dryer combi	Siemens
Extra info	All direct/indirect interior lights new LED
Extra info	All ac hoses replaced 2023

## MACHINERY

No of engines	1
Make	Volkswagen
Type	TDI 140-5
HP	140
kW	103.04
Fuel	diesel
Year installed	2010
Maximum speed (kn)	10
Cruising speed (kn)	7
Engine hours	1583
Engine cooling system	freshwater heat exchanger
Drive	shaft
Engine controls	electrical
Gearbox	hydraulic
Bowthruster	electric 2 x 3 Blade propeller
Sternthruster	water jet Jet Thruster 90H-48V 16kW new 2023
Propeller type	folding Flexofold
Propeller blades	3
Propeller shaft material	stainless steel
Shaft lubrication	water
Manual bilge pump	yes
Electric bilge pump	yes
Electrical installation	12 V / 24 V / 48 V / 220 V



<b>Generator</b>	Cummins Onan 9,5 kW
<b>Running hours generator</b>	1943
<b>Start battery</b>	1 x
<b>Service battery</b>	8 x 140 Ah (2021)
<b>Generator battery</b>	1 x
<b>Bowthruster battery</b>	4 x 75 Ah (2023)
<b>Sternthruster battery</b>	4 x 75 Ah (2023)
<b>Battery monitor</b>	yes
<b>Battery charger</b>	2 x Cristec 12 volt 30 Ah + 2 x Cristec 24 volt 60 Ah
<b>Inverter</b>	2000 Watt
<b>Diode battery combiners</b>	yes
<b>Shorepower</b>	with cable
<b>Watermaker</b>	Desalinator (needs service / to be checked)

## NAVIGATION

<b>Compass</b>	2 x on helm positions
<b>Electric compass</b>	Raymarine (new 2022)
<b>Depth sounder</b>	Raymarine (new 2022)
<b>Log</b>	Raymarine (new 2022)
<b>Windset</b>	Raymarine (new 2022)
<b>Repeater</b>	Raymarine (new 2022)
<b>VHF</b>	Raymarine (new 2022)
<b>VHF handheld</b>	yes
<b>Autopilot</b>	Raymarine including new drive (new 2022)
<b>Rudder angle indicator</b>	Via autopilot (new 2022)
<b>Radar</b>	Raymarine (new 2022)
<b>Radar/GPS/plotter</b>	Raymarine on helm position (new 2022)
<b>Wifi antenna</b>	Raymarine (new 2022)
<b>Electronic chart(s)</b>	yes
<b>AIS receiver</b>	Raymarine (new 2022)
<b>EPIRB</b>	yes



Extra info

Navigation equipment new 2022

Extra info

Wifi network router 2022

## EQUIPMENT

Fixed windscreen	yes
Sprayhood	New 2025
Cockpit cover	New 2025
Bimini	yes
Winter cover	yes
Cockpit cushions	yes
Cockpit table	yes
Bathing platform	yes
Boarding ladder	stainless steel
Transom door	yes
Gangway	Hydraulic
Deck shower	yes
Anchor	yes
Anchor chain	100 meter chain + 100 meter rope
Windlass	electrical
Dinghy	inflatable Mercury
Outboard	Mercury
Outboard support	yes
Davits	stainless steel Custom made (new 2024)
Davits controls	manual
Sea railing	wire With fixed stainless steel frame on top for extra safety
Grab rail (superstructure)	stainless steel
Railing side opening gates	2 x
Pushpit	yes
Pulpit	yes
Life raft (pers)	container 8 (new survey 2025)
Lifejackets	yes



<b>Lifebuoy</b>	yes
<b>Safety lines on deck</b>	yes
<b>Radar reflector</b>	yes
<b>Fenders</b>	yes
<b>Mooring lines</b>	yes
<b>Spare parts</b>	yes
<b>TV</b>	Samsung Frame 50" (2023) with anti reflection screen in salon
<b>Radio</b>	Fusion (2022), with DAB, 2 extra backlit loudspeakers
<b>Cockpit speakers</b>	yes
<b>Speakers in salon</b>	yes
<b>Clock - barometer</b>	yes
<b>Fire extinguisher</b>	yes
<b>Extra info</b>	TV's in every cabin are present but not fitted

## RIGGING

<b>Rigging</b>	fractional
<b>Standing rigging</b>	wire (2010)
<b>Brand mast</b>	Seldén
<b>Material mast</b>	aluminium
<b>Keel stepped mast</b>	yes
<b>Mainsail</b>	M sails 73 m2 (new 2025)
<b>Stoway mast</b>	yes
<b>Jib</b>	48 m2 on Self tacking jib installation
<b>Genoa</b>	90 m2
<b>Genoa furler</b>	2 x electric (both jib and genoa) Jib furler new 2023 + remote
<b>Code Zero</b>	With furling system
<b>Gennaker</b>	With squeezer
<b>Self tacking jib installation</b>	yes
<b>Reefing System</b>	main in-mast furling
<b>Backstay adjuster</b>	hydraulic
<b>Boomvang</b>	gasspring



<b>Primary sheet winch</b>	2 x electric
<b>Secondary sheet winch</b>	2 x electric
<b>Genoa sheetwinches</b>	Electric



# BENETEAU OCEANIS 58



# BENETEAU OCEANIS 58



# BENETEAU OCEANIS 58



# BENETEAU OCEANIS 58



# BENETEAU OCEANIS 58



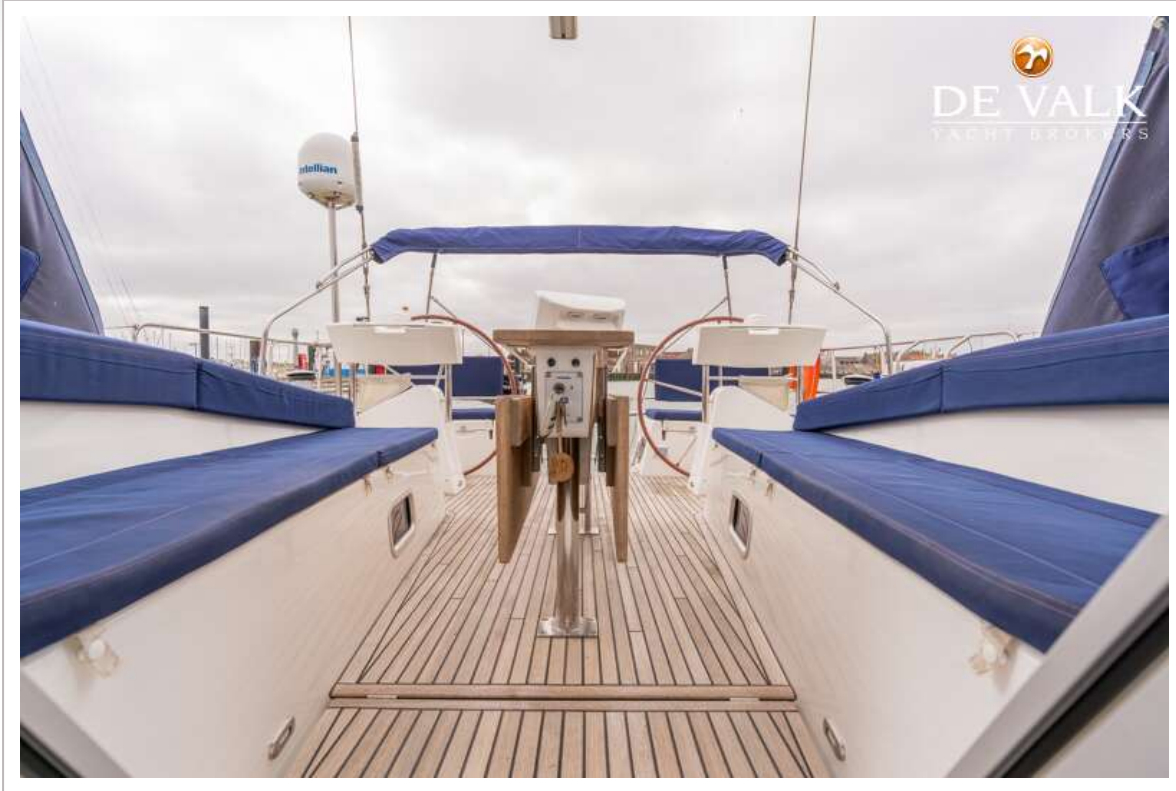
# BENETEAU OCEANIS 58



# BENETEAU OCEANIS 58



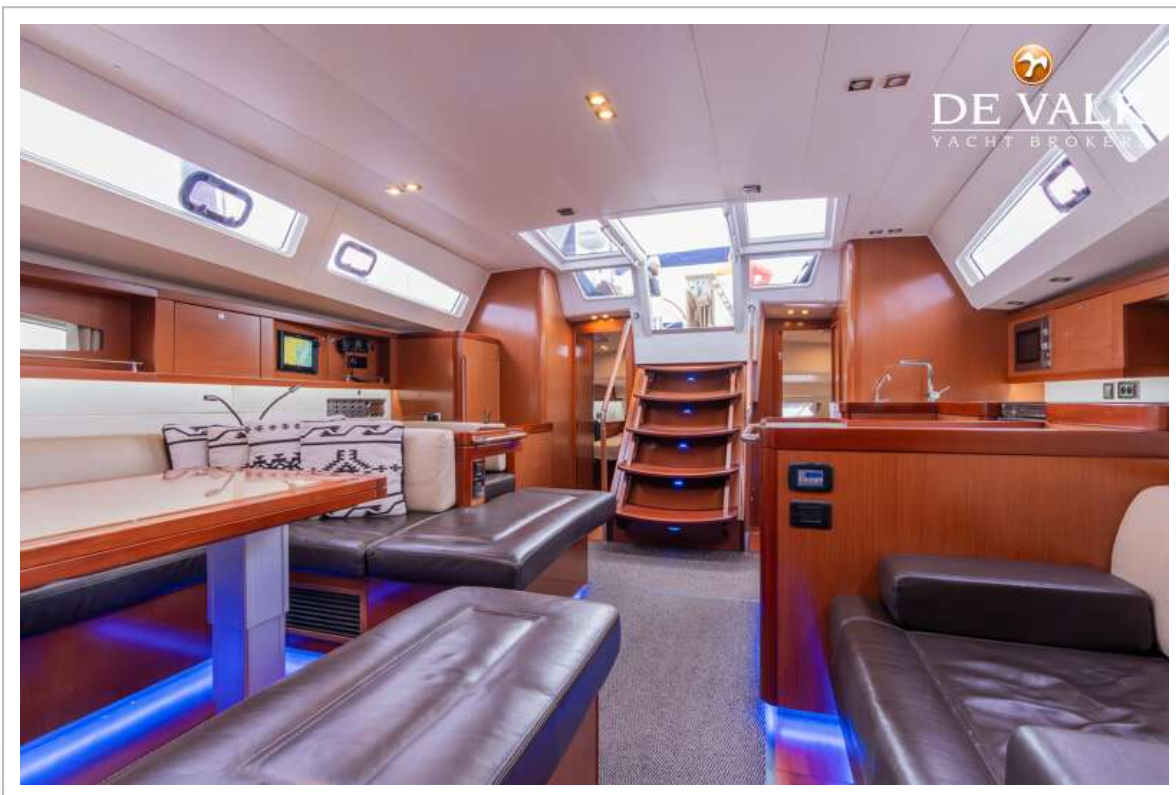
# BENETEAU OCEANIS 58



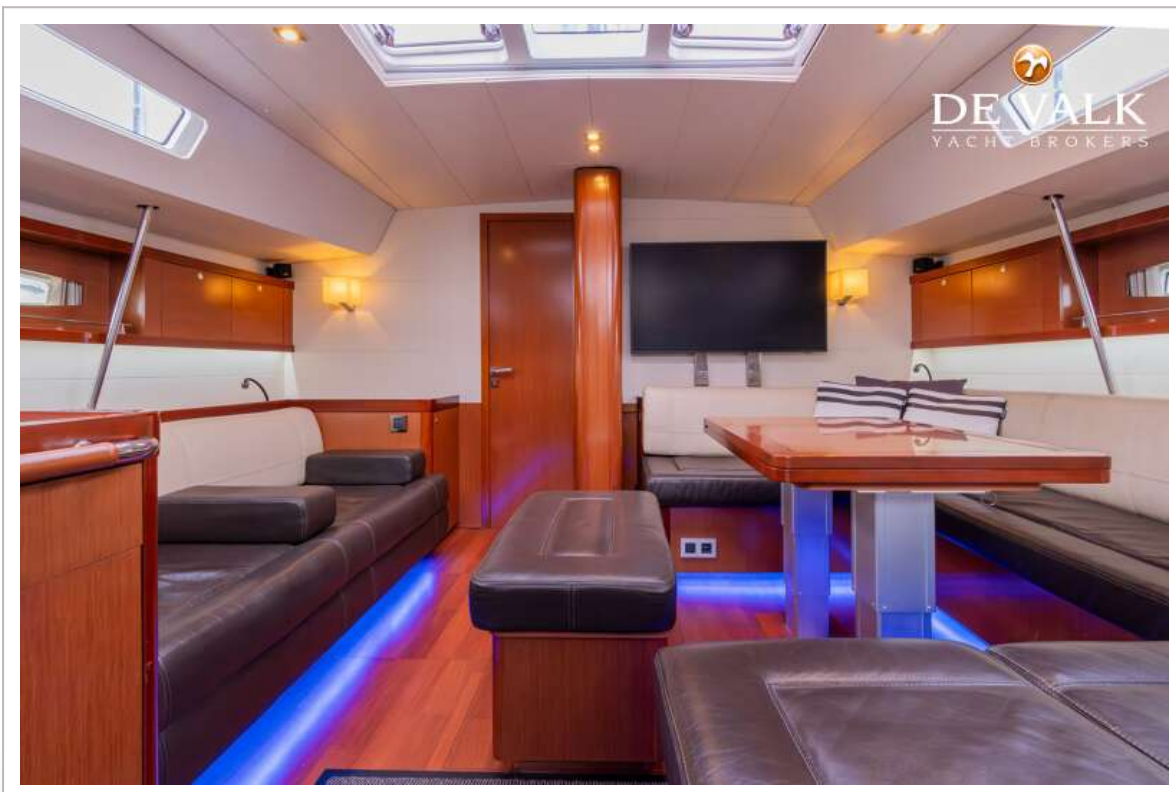
# BENETEAU OCEANIS 58



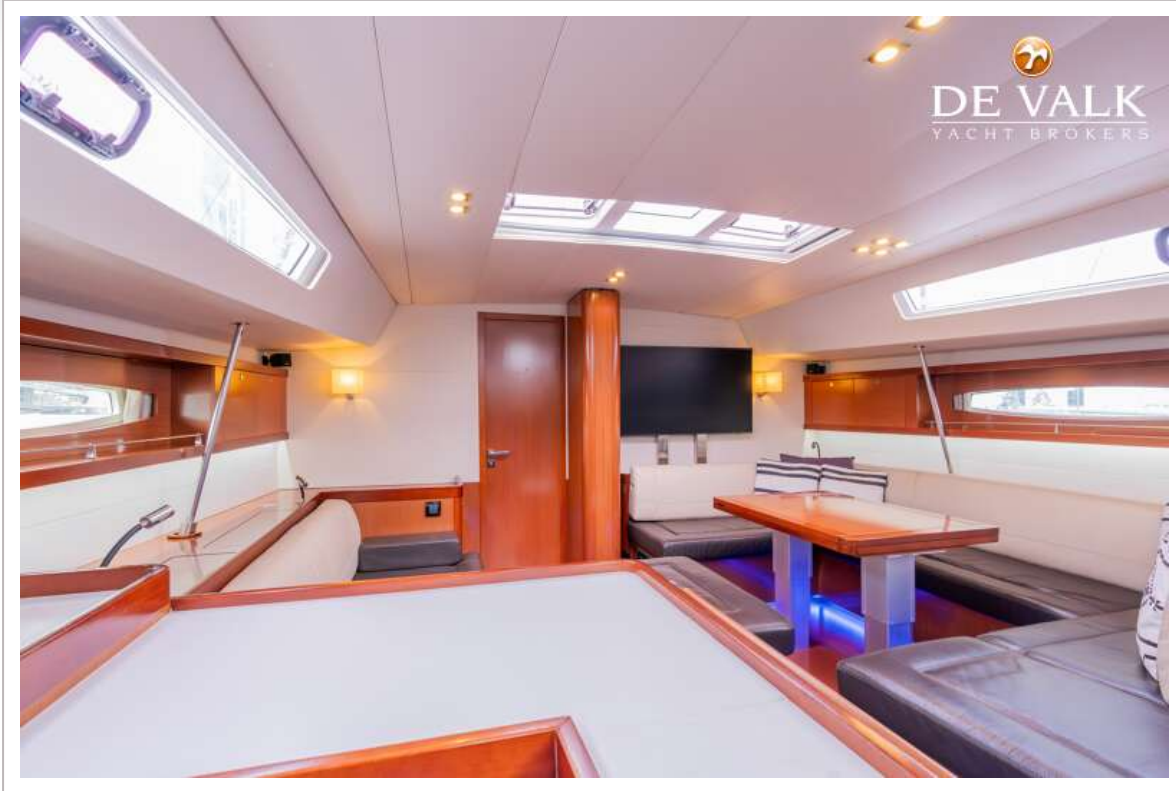
# BENETEAU OCEANIS 58



# BENETEAU OCEANIS 58



# BENETEAU OCEANIS 58



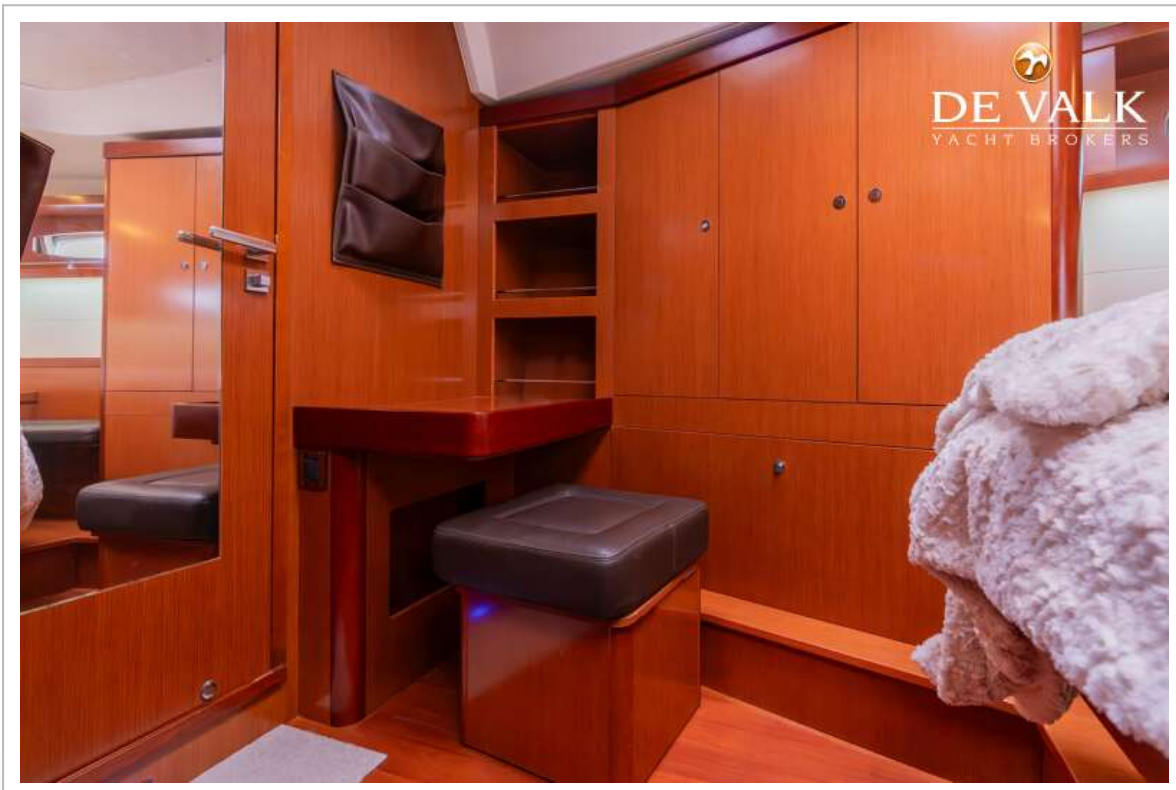
# BENETEAU OCEANIS 58



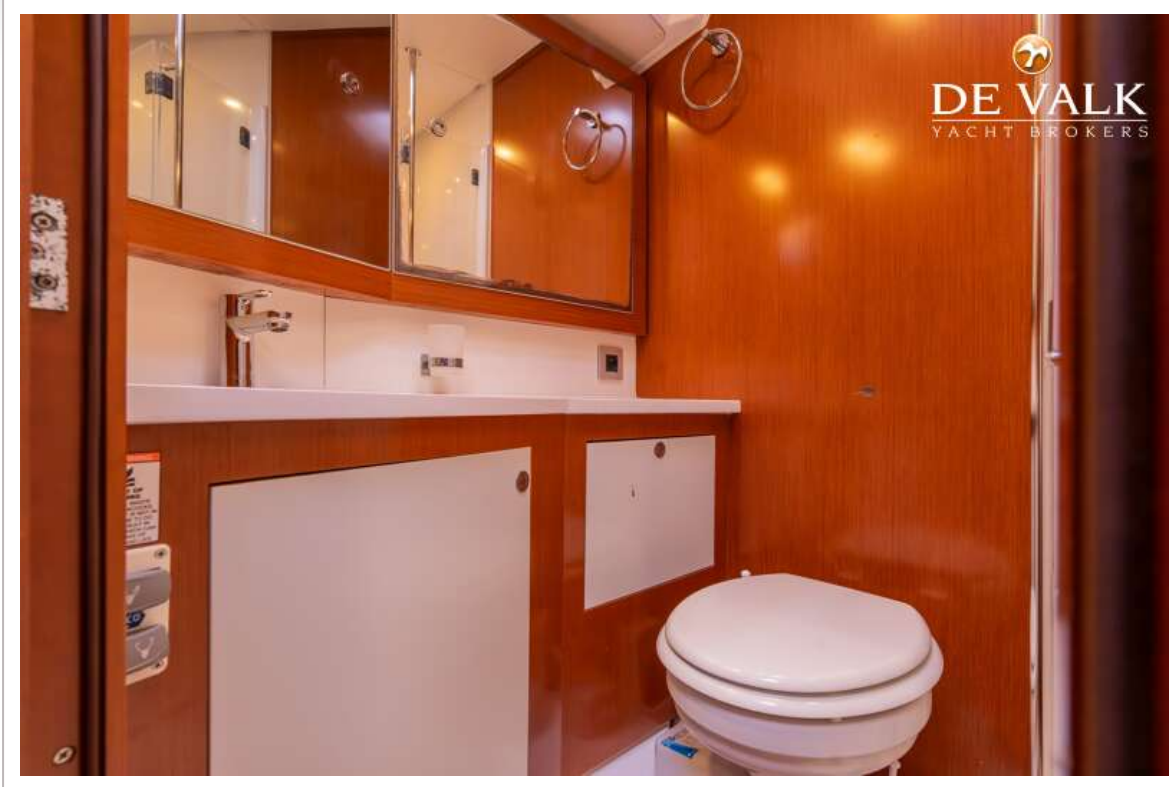
# BENETEAU OCEANIS 58



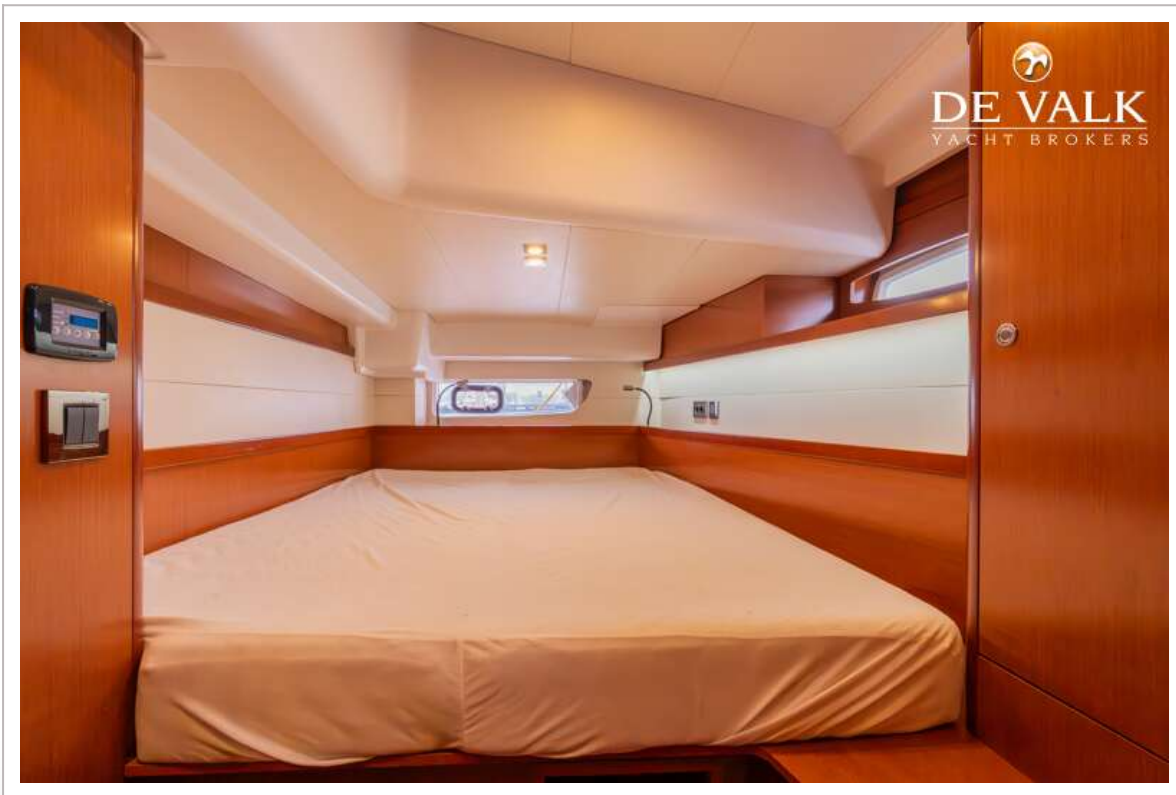
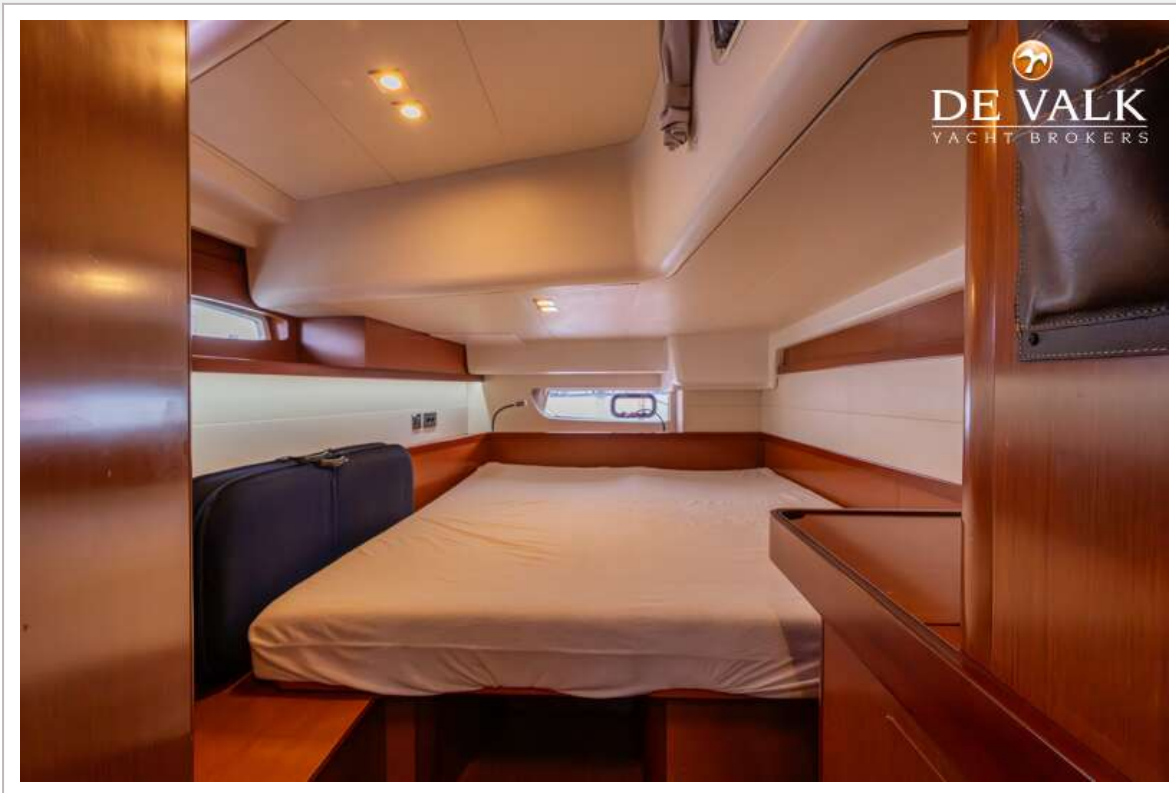
# BENETEAU OCEANIS 58



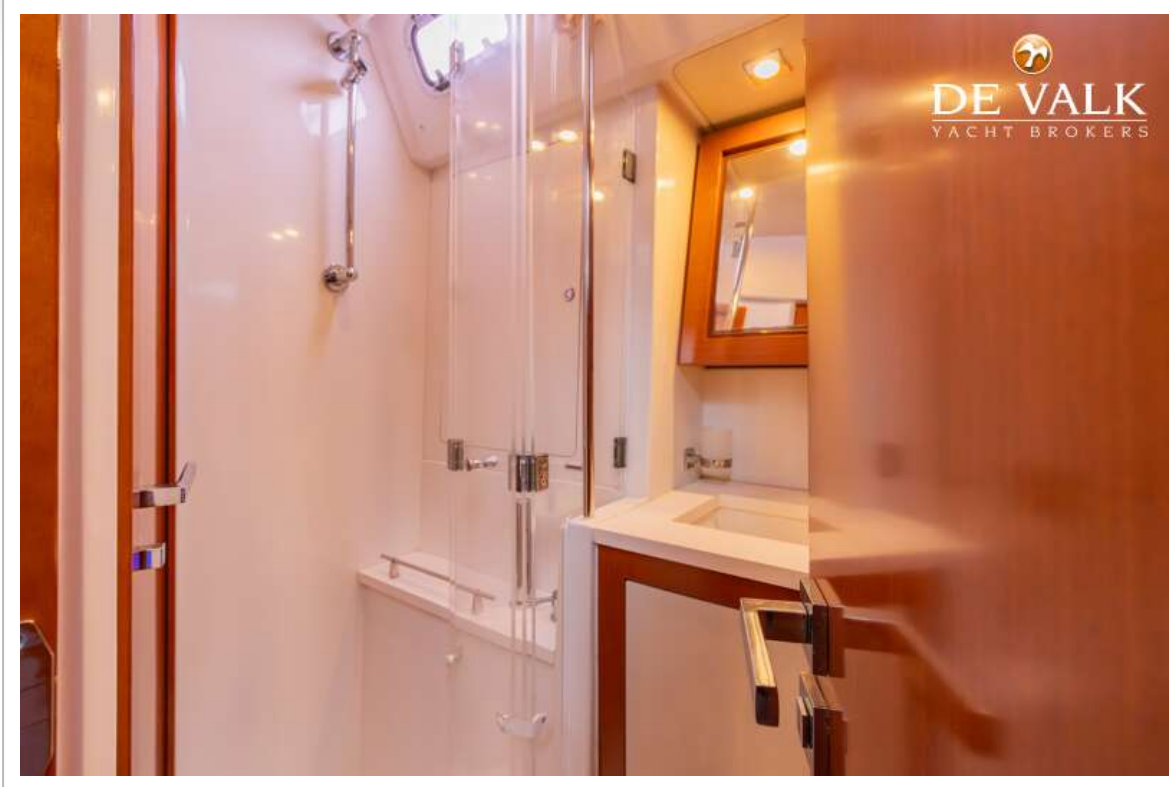
# BENETEAU OCEANIS 58



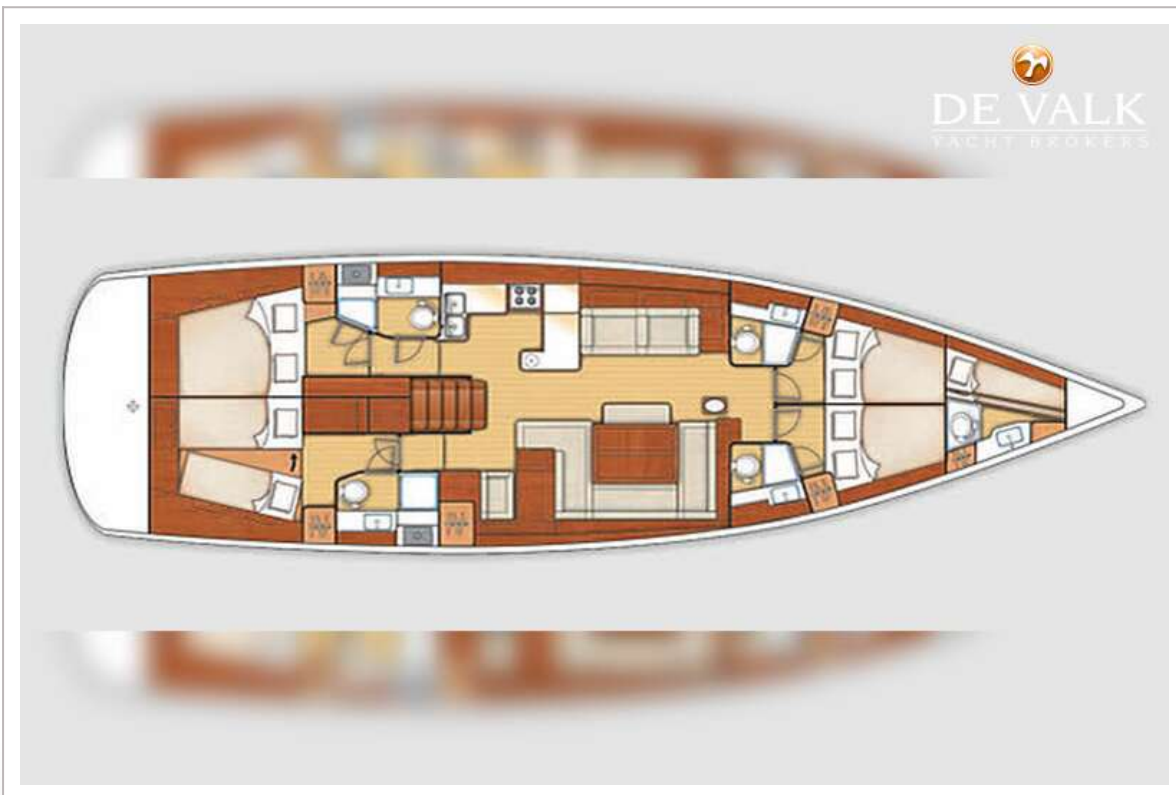
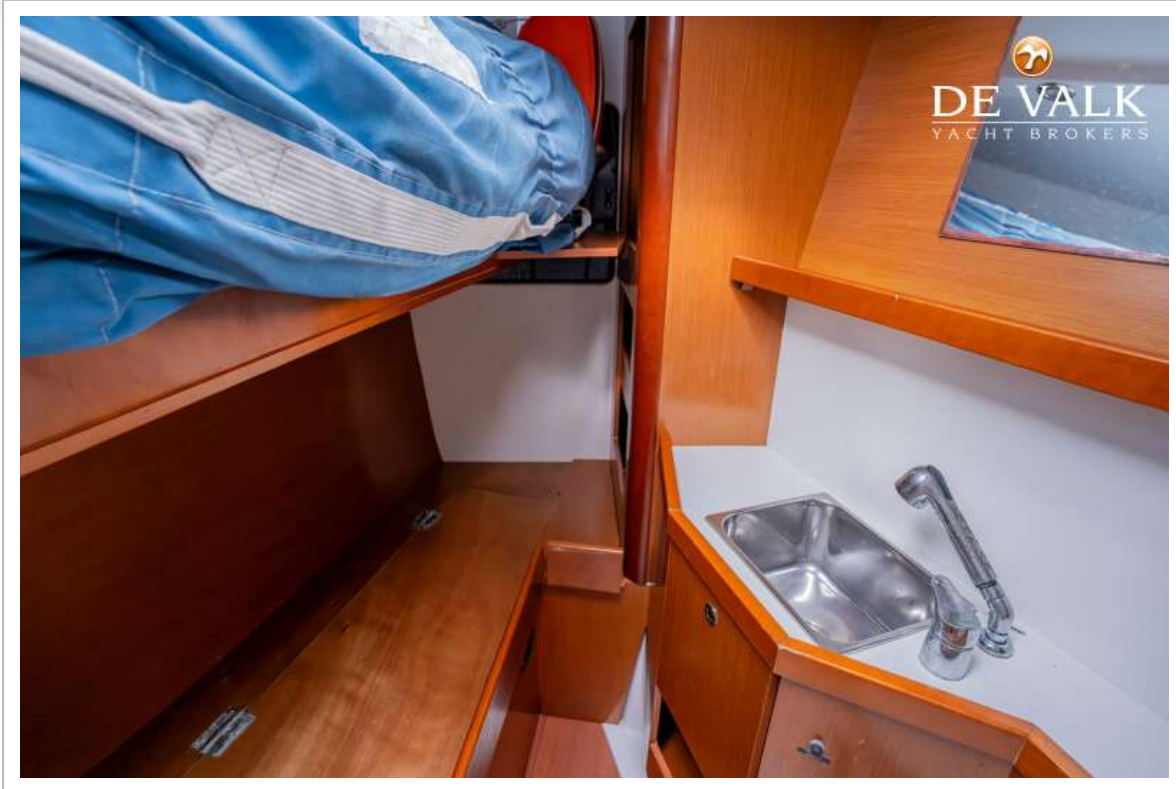
# BENETEAU OCEANIS 58



# BENETEAU OCEANIS 58



# BENETEAU OCEANIS 58



# BENETEAU OCEANIS 58

