



DE VALK  
YACHT BROKERS



## HALLBERG RASSY 41



DE VALK  
YACHT BROKERS

# HALLBERG RASSY 41

## BROKER'S COMMENTS

The Hallberg-Rassy 41 was built between 1975 and 1981 in 105 units. The Hallberg-Rassy 41 quickly became a trend-setter. This was the first boat with a proper walk through to the aft-cabin below deck and the first Hallberg-Rassy with a blue stripe around the cockpit. The size of the boat and the outfitting was spectacular for its time. The present owner started a refit which a new owner would need to complete. Available in South Spain.

*Jörg Hellmich*

## SPECIFICATIONS

<b>Dimensions</b>	12.50 x 3.53 x 1.85 (m)	<b>Builder</b>	Hallberg Rassy
<b>Built</b>	1980	<b>Cabins</b>	2
<b>Material</b>	GRP	<b>Berths</b>	6
<b>Engine(s)</b>	1 x Nanni 4.220 HEV diesel	<b>Hp/Kw</b>	50.00 (hp), 36.80 (kw)
<b>Asking price</b>	Under Offer (VAT )	<b>Lying</b>	contact Almeria

## CONTACT

<b>Sales office</b>	De Valk Almeria	<b>Telephone</b>	+34 950 497 825
<b>Address</b>	Puerto Deportivo, Darsena de la Batea 42 04711 Almerimar ES	<b>E-mail</b>	almeria@devalk.nl

## DISCLAIMER

These particulars are given in good faith as supplied but cannot be guaranteed.



# HALLBERG RASSY 41

## GENERAL

<b>Model</b>	HALLBERG RASSY 41
<b>Type</b>	sailing yacht
<b>LOA (m)</b>	12,50
<b>LWL (m)</b>	10,42
<b>Beam (m)</b>	3,53
<b>Draft (m)</b>	1,85
<b>Air draft min (m)</b>	13,50
<b>Headroom (m)</b>	1,98
<b>Year built</b>	1980
<b>Builder</b>	Hallberg Rassy
<b>Country</b>	Sweden
<b>Designer</b>	Olle Oderlein
<b>Displacement (t)</b>	9,9
<b>Ballast (tonnes)</b>	3,8
<b>CE norm</b>	NA
<b>Hull material</b>	GRP
<b>Hull colour</b>	white
<b>Hull shape</b>	V-shaped hull
<b>Keel type</b>	long keel Encapsulated
<b>Superstructure material</b>	GRP
<b>Rubbing strake</b>	stainless steel
<b>Deck material</b>	GRP
<b>Deck finish</b>	paint Needs new surface treatment (material onboard)
<b>Superstructure deck finish</b>	TBS non-skid profile mats
<b>Cockpit deck finish</b>	teak
<b>Dorades</b>	yes
<b>Window frame</b>	aluminium
<b>Window material</b>	tempered glass
<b>Deckhatch</b>	Need new sealant or replacing
<b>Portholes</b>	aluminium



# HALLBERG RASSY 41

Insulation	foam
Fuel tank (litre)	stainless steel 600
Level indicator (fuel tank)	Gauge
Freshwater tank (litre)	stainless steel 560
Level indicator (freshwater)	Gauge
Blackwater tank (litre)	Expanded
Wheel steering	cable steering
Emergency tiller	yes
Extra info	Sea cocks replaced 2014

## ACCOMMODATION

Cabins	2
Berths	6
Interior	mahogany
Layout	2 cabins
Floor	wood
Saloon	yes
Headroom saloon (m)	1,98
Chart table	yes
Aft Cabin	yes
Convertible berth	In saloon
Galley	U-shape
Countertop	corian
Sink	stainless steel Double
Cooker	calor gas 3 burner (newer model)
Oven	yes
Fridge	New kit incl. compressor (2023)
Hot water system	220V + engine Isotemp Boiler (new temp. valve)
Water pressure system	electrical SeaFlow (2023)
Manual and/or foot pump	yes
Hot water tap	In galley and heads (2023)



# HALLBERG RASSY 41

Crockery	yes
Owners cabin	twin single Aft
Bed length (m)	1,95 x 0,80
Wardrobe	hanging and shelves
Toilet	en suite
Toilet system	manual Jabsco (2024)
Wash basin	at the toilet
Shower	en suite
Guest cabin 1	v-bed Forward
Bed length (m)	2,05 x 0,80
Wardrobe	hanging and shelves
Toilet	en suite
Toilet system	manual Jabsco (2024)
Wash basin	at the toilet
Shower	en suite
Extra info	LED in ceiling and bunk lights (2023)

## MACHINERY

No of engines	1
Make	Nanni
Type	4.220 HEV
HP	50
kW	36.80
Fuel	diesel
Year installed	2005
Maximum speed (kn)	8
Cruising speed (kn)	6
Consumption (l/hr)	3,5
Range (nm)	1000
Engine hours	800
Engine cooling system	freshwater heat exchanger



# HALLBERG RASSY 41

Drive	shaft
Shaft seal	Replaced 2023
Engine controls	bowden cable
Gearbox	hydraulic
Engine controls	bowden cable
Exhaust	watercooled
Propeller type	fixed New cutlass bearing 2023
Propeller blades	3
Propeller shaft material	stainless steel
Shaft lubrication	water
Manual bilge pump	Whale gusher
Electric bilge pump	SeaFlow 3000 GPH (2023)
Start battery	1 x 12V / 100 Ah (2023)
Service battery	2 x 12V / 200 Ah (2023)
Battery monitor	Victron
Battery charger	Victron Energy 12V / 30A (2024)
Inverter	1000W Regony (2023)
Solar panel	3 x 100W Regony (2023)
Diode battery combiners	BMS Regony with DC-AC solar charger
Shorepower	with cable 230V
Extra info	New fuel filter 2023

## NAVIGATION

Compass	Sestrel Moore
Depth sounder/log	yes
Windset	Autohelm Wind
VHF	Kenwood TKM-307
Autopilot	Raymarine ST4000(needs wiring) with new tiller lever (Jefa) 2023
Radar	(not functional)
GPS	Garmin GPS 120



# HALLBERG RASSY 41

<b>Plotter/GPS</b>	ONWA KP-12A (2023)
<b>Wifi antenna</b>	Starlink satellite internet model with wifi (2023)
<b>Electronic chart(s)</b>	Navionics 2023 (Europe & Atlantic)
<b>AIS transponder</b>	ONWA KP-A12
<b>Navigation lights</b>	yes
<b>Extra info</b>	Distress flairs and rockets (2023)

## EQUIPMENT

<b>Fixed windscreen</b>	yes
<b>Sprayhood</b>	yes
<b>Cockpit cushions</b>	Custom made (2024)
<b>Cockpit table</b>	yes
<b>Bathing platform</b>	yes
<b>Boarding ladder</b>	stainless steel
<b>Anchor</b>	CQR Plough Chain locker hachtes need to be rebuilt
<b>Anchor chain</b>	40 m
<b>Anchor 2</b>	Delta
<b>Windlass</b>	electrical Lewmar (food padel needs replacing, parts on board)
<b>Dinghy</b>	inflatable Quicksilver (2023)
<b>Outboard</b>	Rhino BLX Electric (2023)
<b>Outboard support</b>	yes
<b>Davits</b>	stainless steel (not mounted)
<b>Davits controls</b>	manual
<b>Sea railing</b>	wire
<b>Grab rail (superstructure)</b>	teak
<b>Railing side opening gates</b>	yes
<b>Pushpit</b>	yes
<b>Pulpit</b>	yes
<b>Life raft</b>	container Osculati (2008)
<b>Life raft (pers)</b>	8
<b>Last life raft survey</b>	2016



<b>Radar reflector</b>	On mast (2023)
<b>Fenders</b>	yes
<b>Mooring lines</b>	yes
<b>Spare parts</b>	yes
<b>Tools</b>	yes
<b>Clock - barometer</b>	Brass
<b>Fire extinguisher</b>	yes

## RIGGING

<b>Rigging</b>	ketch-cutter
<b>Standing rigging</b>	wire New 2019
<b>Brand mast</b>	Seldén
<b>Material mast</b>	aluminium
<b>Spreaders</b>	yes
<b>Fully battened mainsail</b>	Dacron (2002)
<b>Mizzen</b>	Dacron (2002)
<b>Jib</b>	Dacron (2002)
<b>Genoa</b>	Dacron (2002) with new tracks
<b>Genoa furler</b>	Selden
<b>Cutter furler</b>	Selden
<b>Reefing System</b>	slabreefing Lazy jacks (need proper mounting)
<b>Boomvang</b>	mechanical and tackle
<b>Primary sheet winch</b>	2 x Lewmar 44 ST 3SP
<b>Secondary sheet winch</b>	2 x Lewmar
<b>Multifunctional winches</b>	Lewmar winches on masts & boom
<b>Spi-pole</b>	aluminium On mast
<b>Extra info</b>	Sail feeder for both masts need mounting (orig. Selden parts)
<b>Extra info</b>	Cockpit stowage hatch needs new hinges (parts onboard)

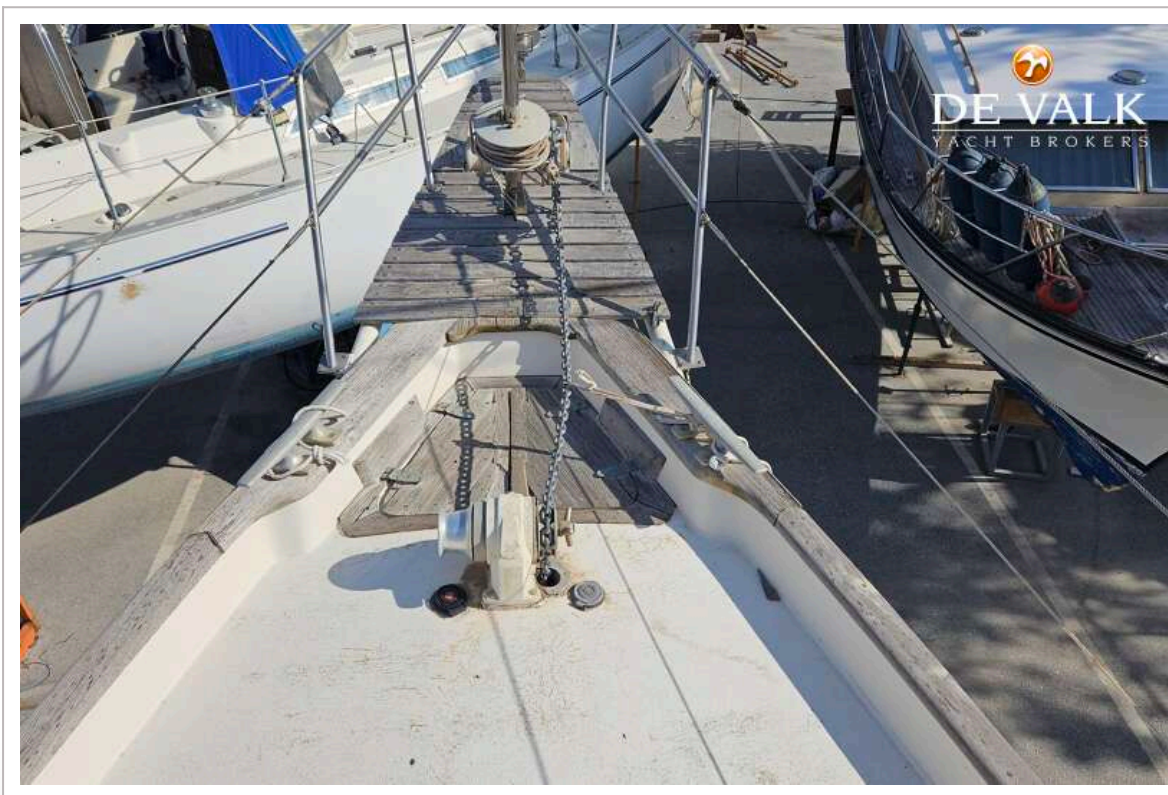




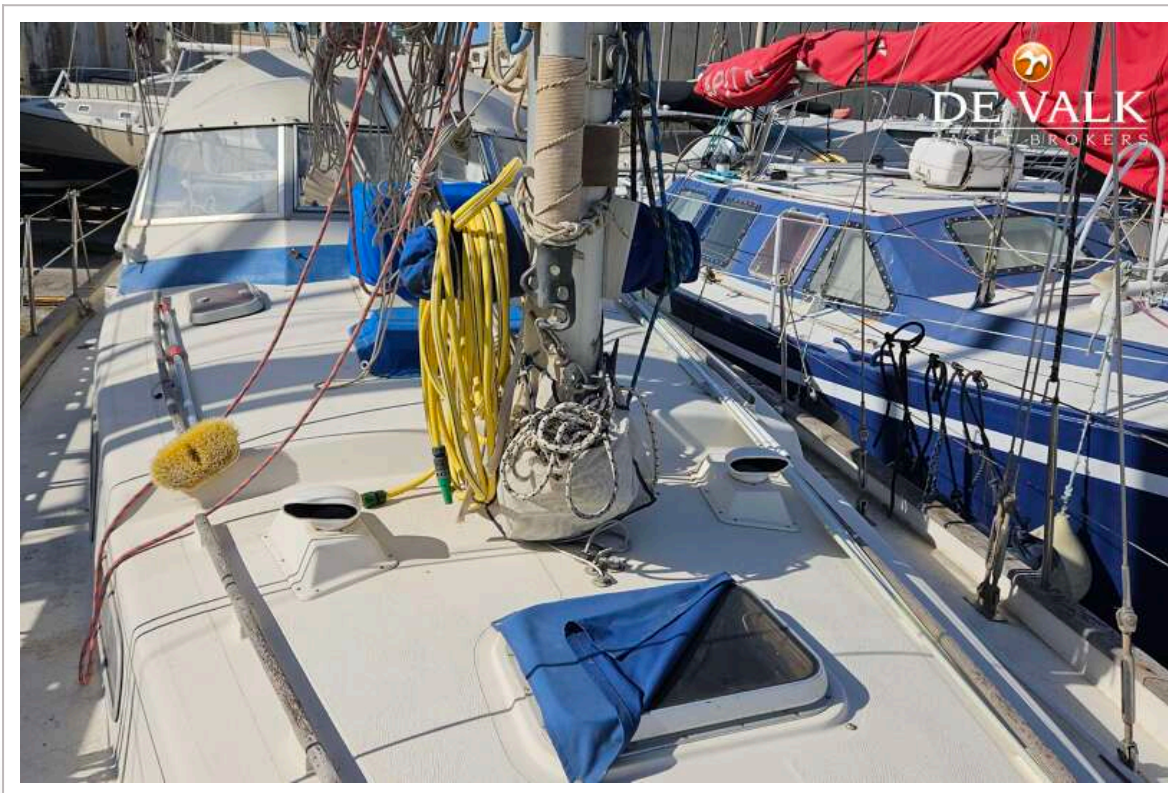
# HALBERG RASSY 41



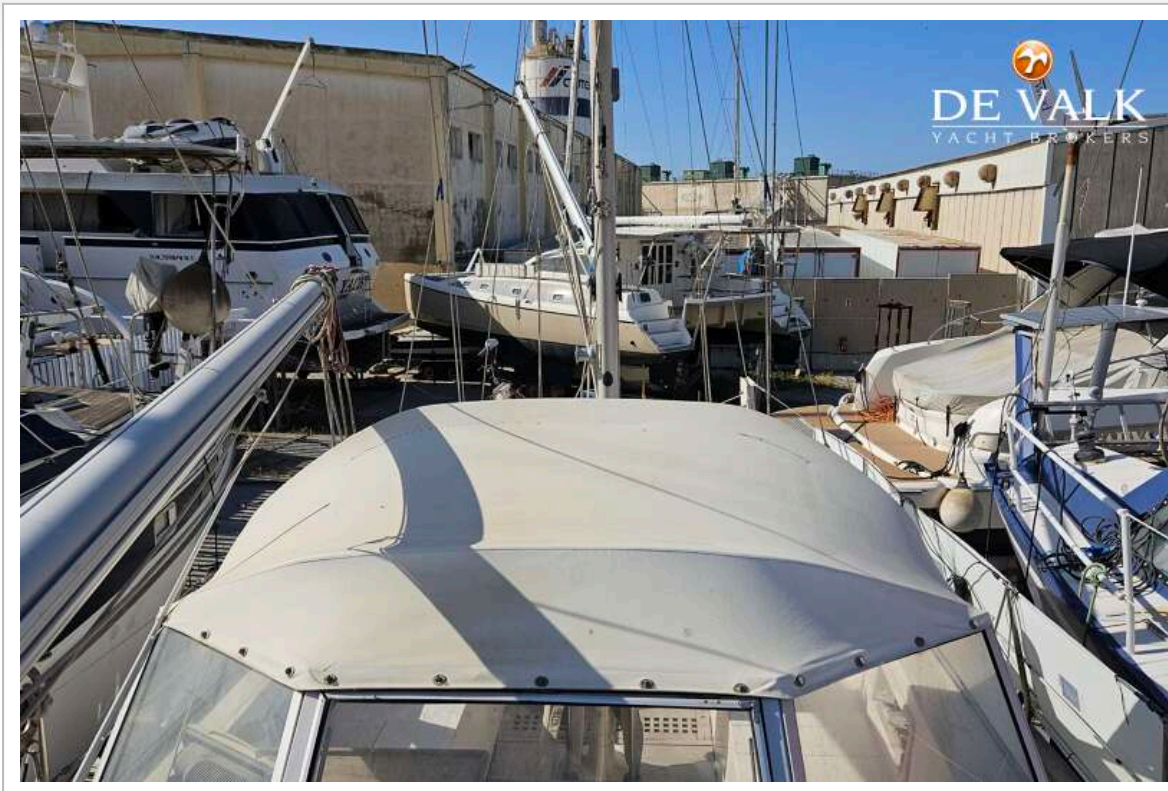
# HALBERG RASSY 41



# HALLBERG RASSY 41



# HALLBERG RASSY 41



# HALLBERG RASSY 41



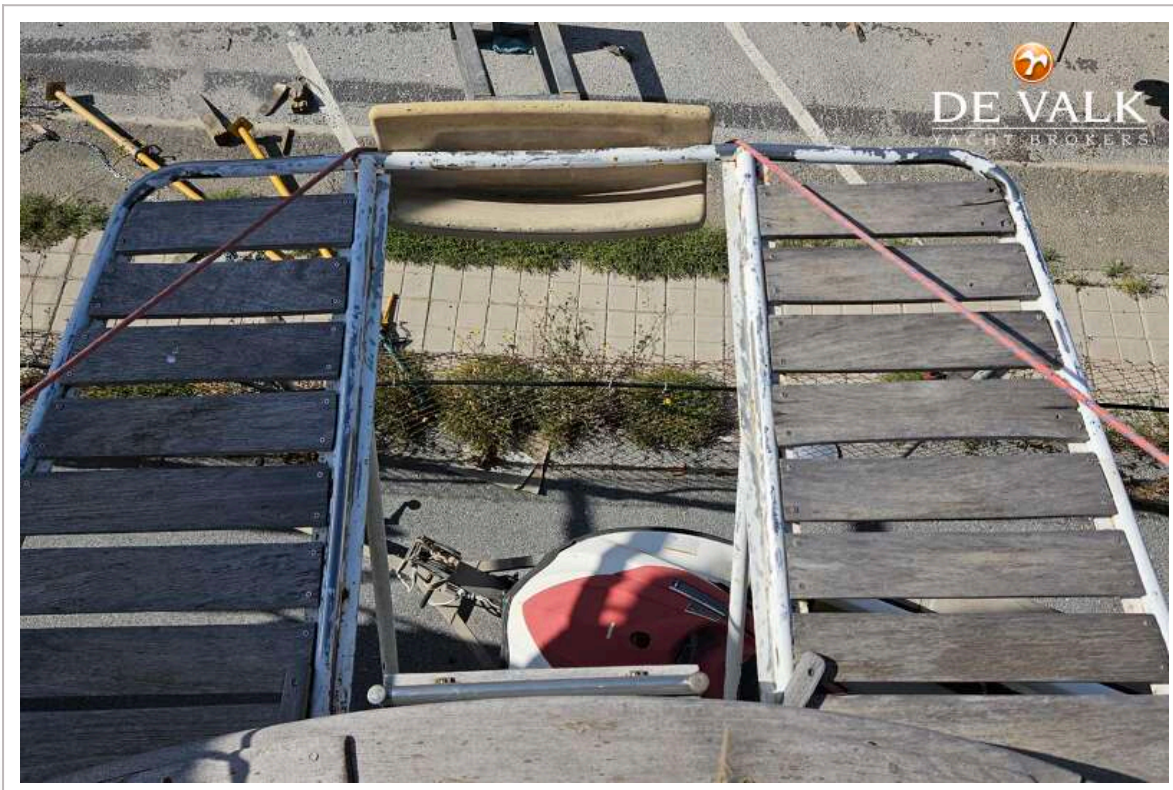
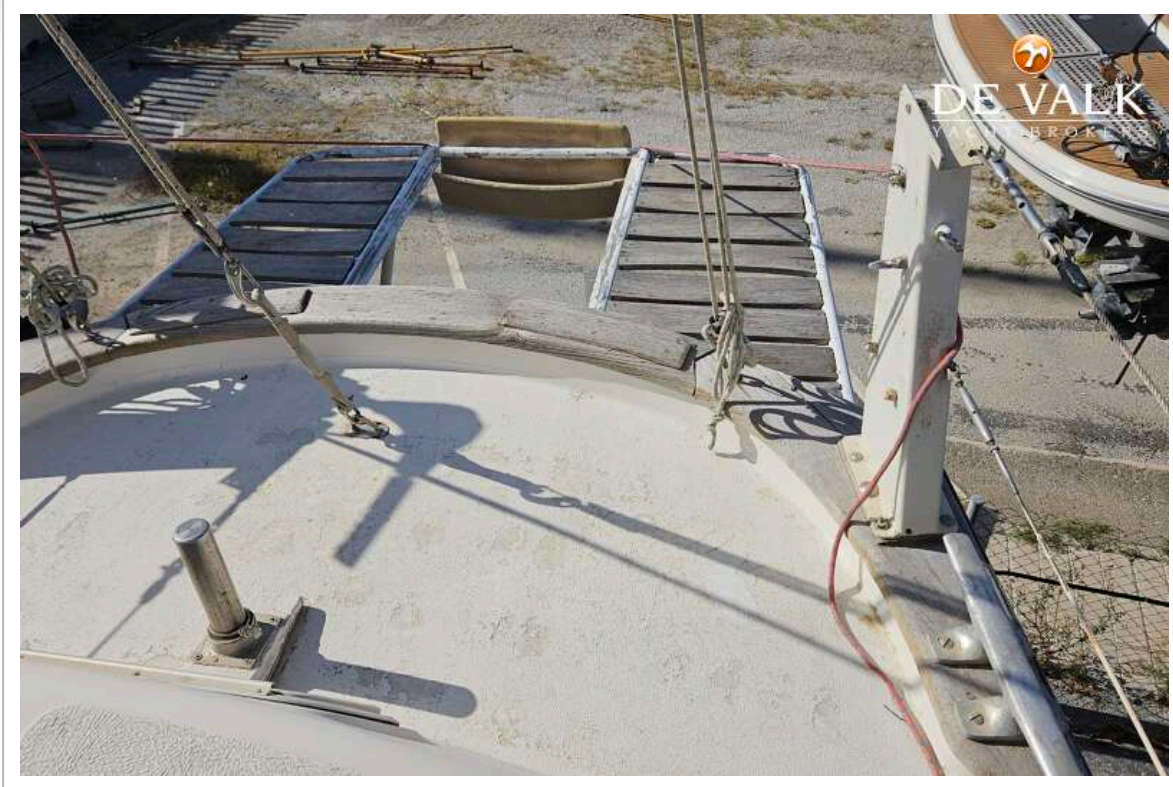
# HALLBERG RASSY 41



# HALLBERG RASSY 41

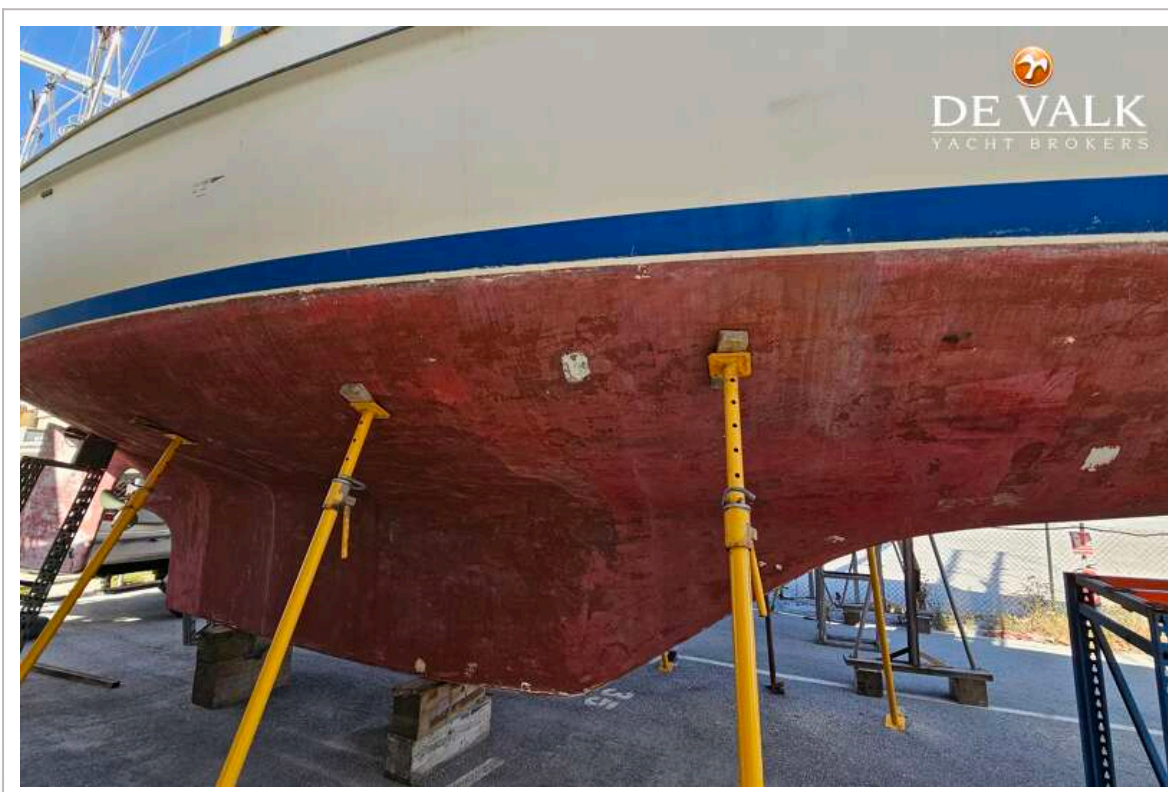
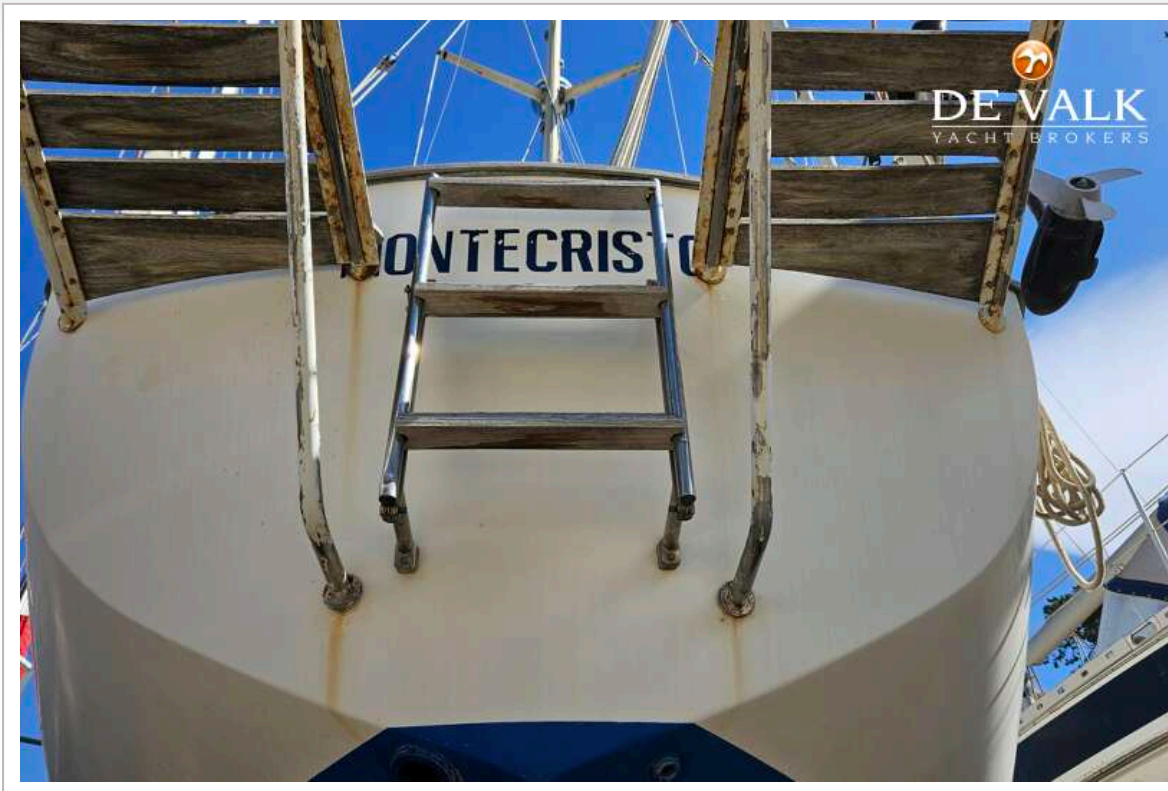


# HALLBERG RASSY 41

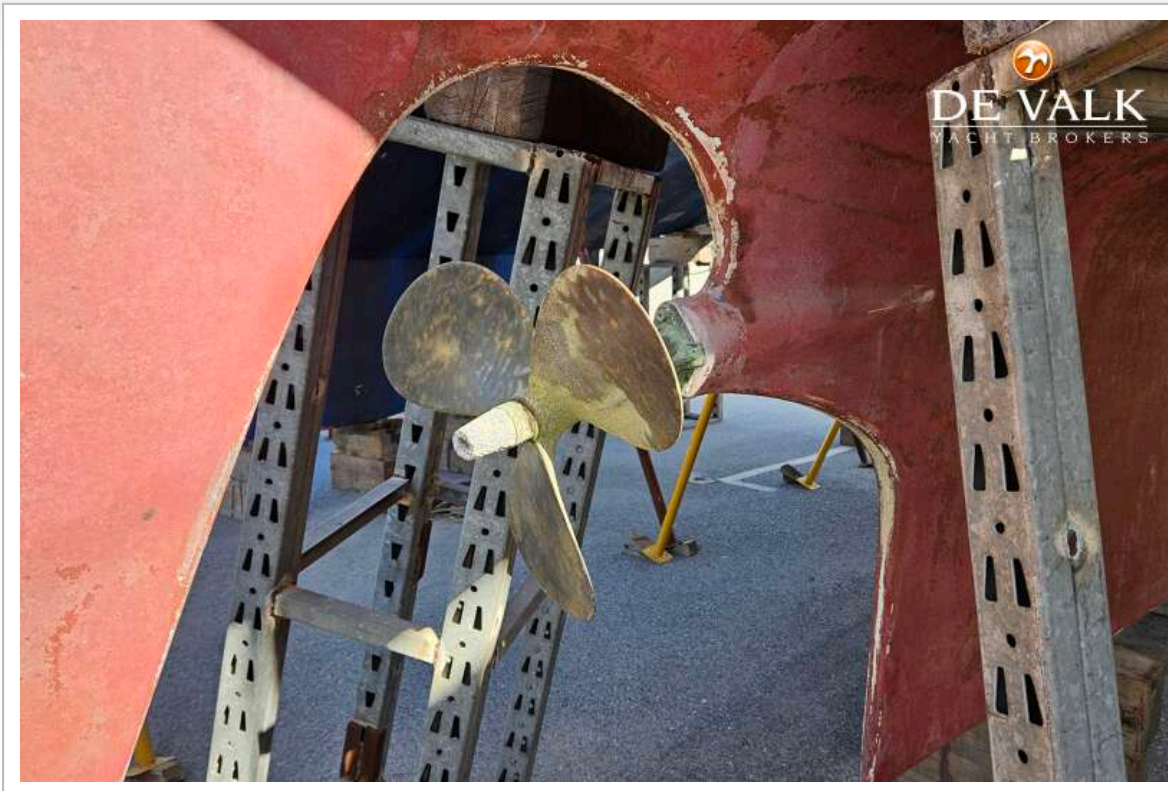




# HALLBERG RASSY 41



# HALLBERG RASSY 41



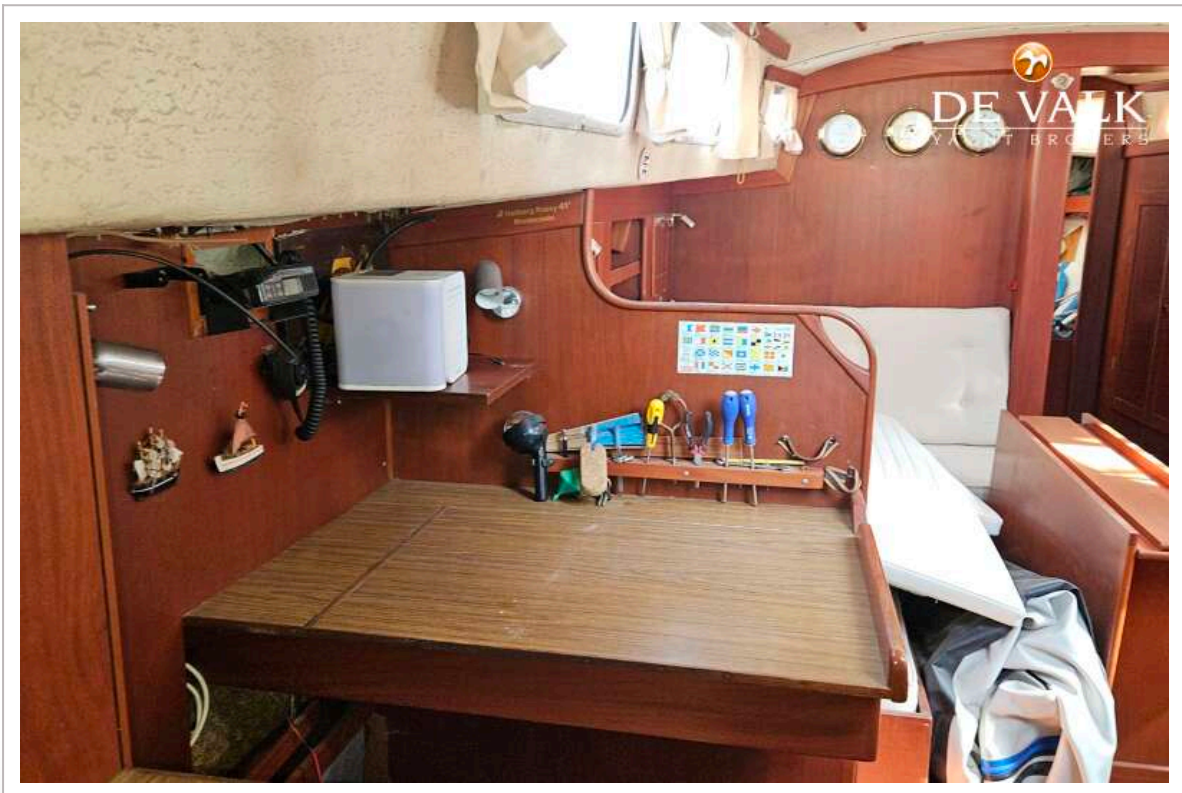
# HALLBERG RASSY 41



# HALLBERG RASSY 41



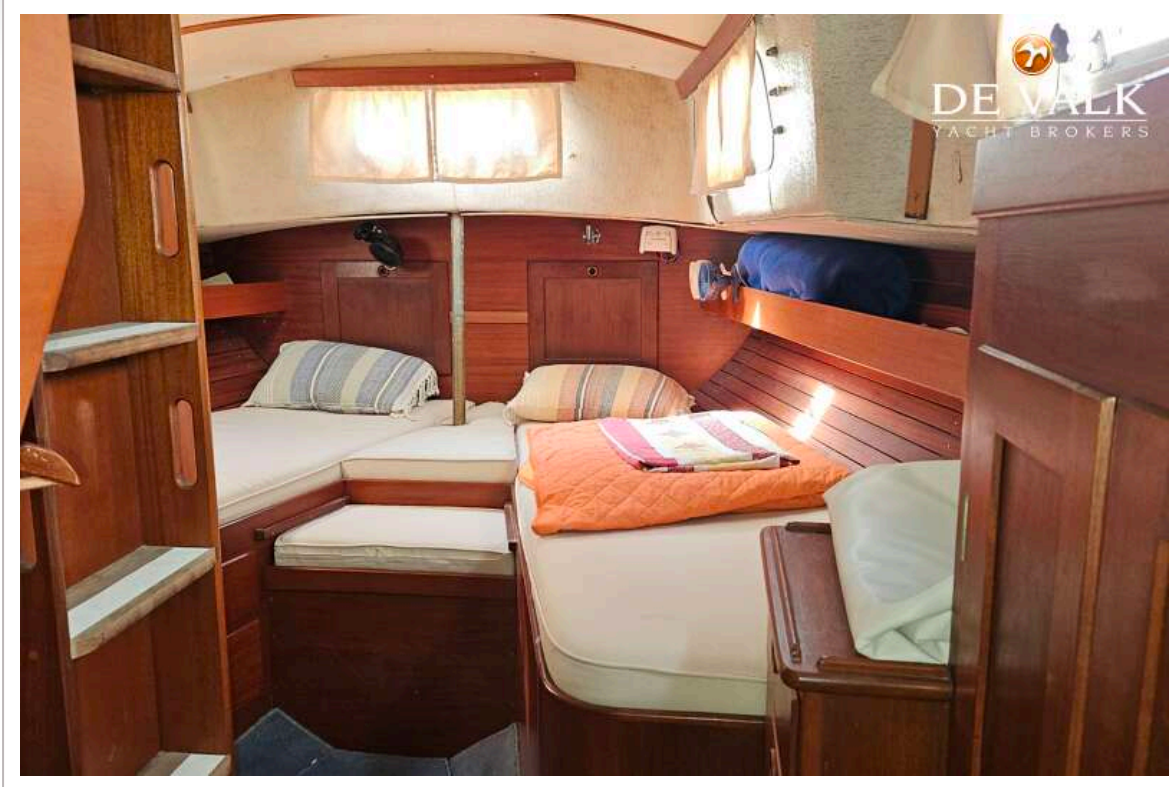
# HALLBERG RASSY 41



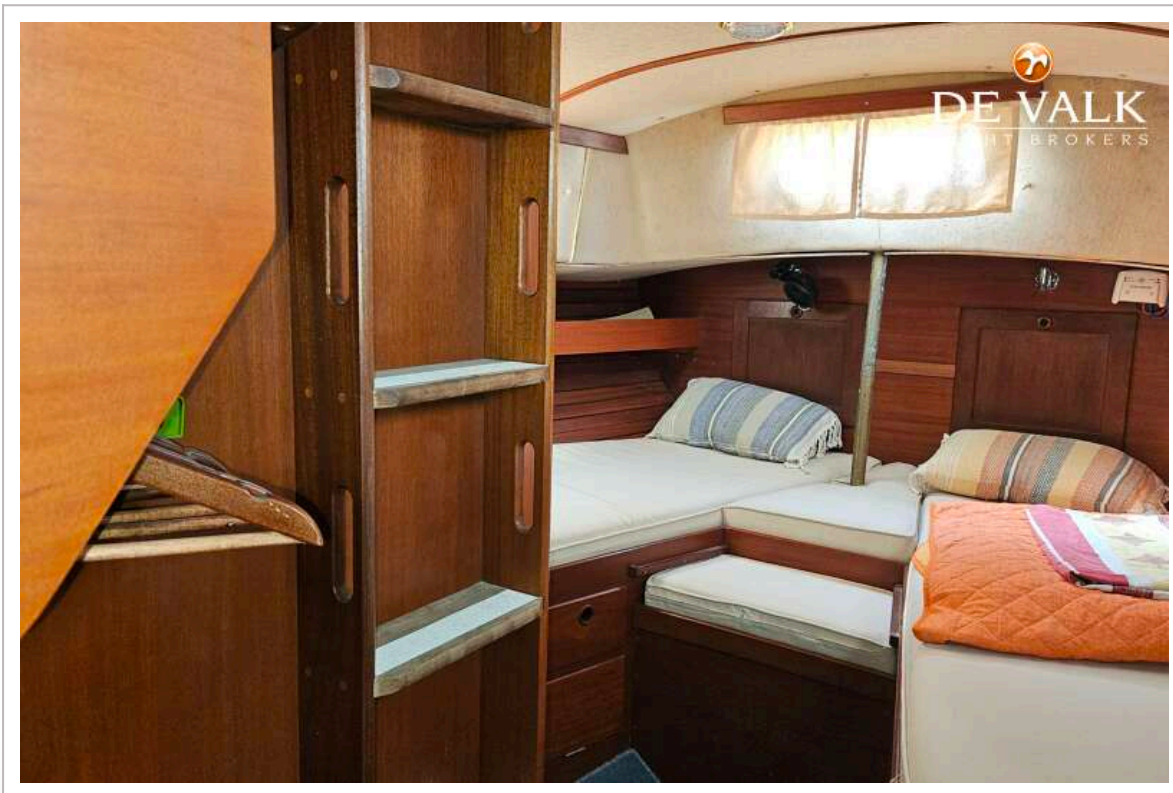
# HALLBERG RASSY 41



# HALLBERG RASSY 41

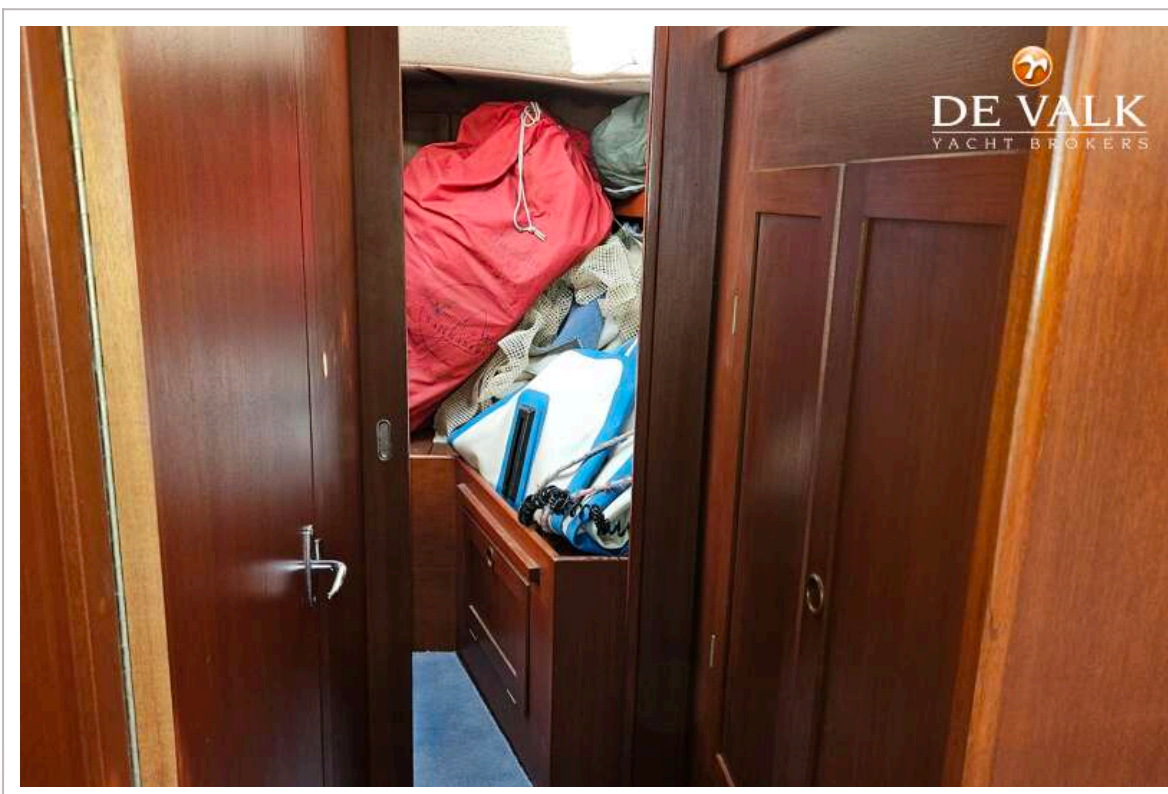
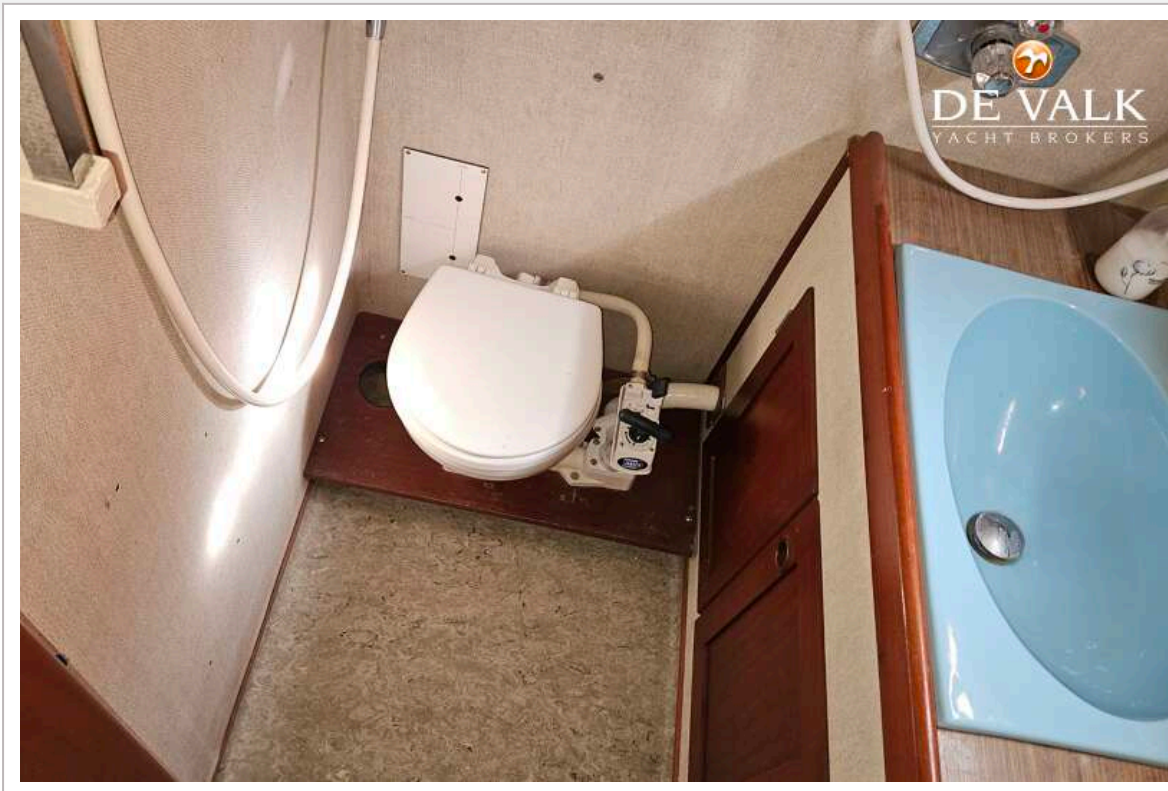


# HALLBERG RASSY 41

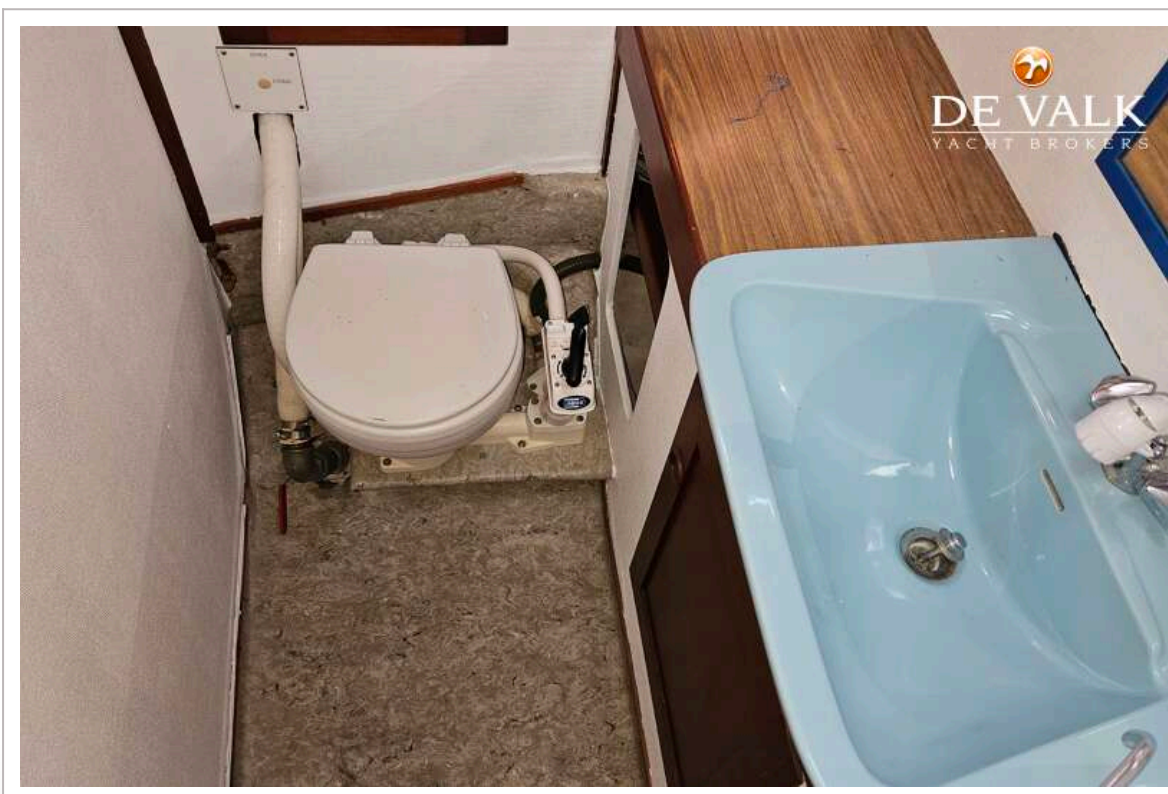
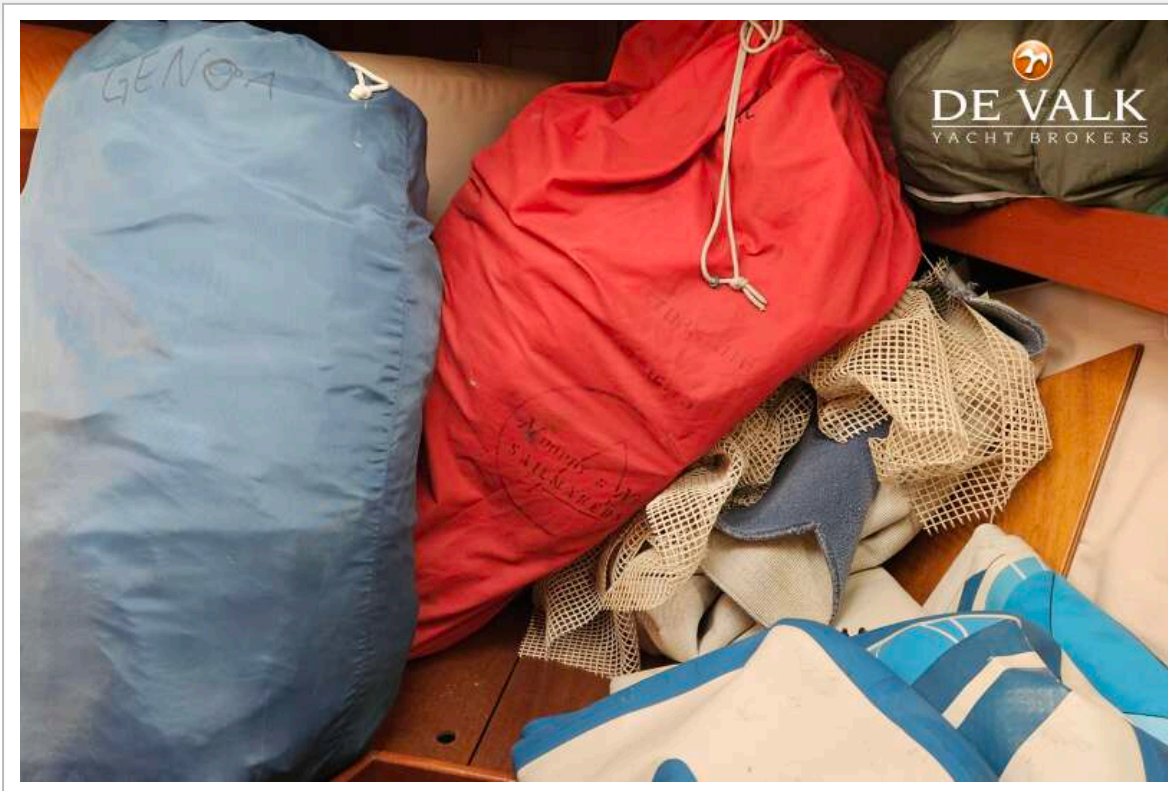




# HALLBERG RASSY 41



# HALLBERG RASSY 41



# HALLBERG RASSY 41

