



DE VALK  
YACHT BROKERS



WARRIOR 40 MK II



DE VALK  
YACHT BROKERS

BROKERAGE | CHARTER | BERTHS | FINANCE | INSURANCE | YACHT MANAGEMENT

# WARRIOR 40 MK II

## BROKER'S COMMENTS

Warrior 40MKII built in 1995 by Trydent Marine in Southampton. 4 cabins, bathroom and separate toilet. Volvo Penta diesel engine (large service in 2021) and bowthruster, low draft of 1.55m. Long voyages or exploring shallow water, small crew or with the whole family, "Kapal Tiga" is ready for new adventures! Come over for a viewing in our sales marina.

*Arne Doodeman*

## SPECIFICATIONS

<b>Dimensions</b>	12.00 x 3.96 x 1.55 (m)	<b>Builder</b>	Trident Marine Southampton
<b>Built</b>	1995	<b>Cabins</b>	4
<b>Material</b>	GRP	<b>Berths</b>	8
<b>Engine(s)</b>	1 x Volvo Penta MD22L diesel	<b>Hp/Kw</b>	50.00 (hp), 36.80 (kw)
<b>Asking price</b>	€ 95.000 (VAT Paid)	<b>Lying</b>	at sales office

## CONTACT

<b>Sales office</b>	De Valk Monnickendam B.V.	<b>Telephone</b>	+31 (0)299 65 63 50
<b>Address</b>	Hoogedijk 6 1145 PM Katwoude NL	<b>E-mail</b>	monnickendam@devalk.nl

## DISCLAIMER

These particulars are given in good faith as supplied but cannot be guaranteed.



# WARRIOR 40 MK II

## GENERAL

Model	WARRIOR 40 MK II
Type	sailing yacht
LOA (m)	12,00
LWL (m)	9,53
Beam (m)	3,96
Draft (m)	1,55
Air draft min (m)	18,50
Year built	1995
Builder	Trident Marine Southampton
Country	United Kingdom
Designer	Bill Dixon
Displacement (t)	10
Ballast (tonnes)	3.750 kg
CE norm	NA
Hull material	GRP
Hull colour	white
Hull shape	round-bilged
Keel type	long keel
Superstructure material	GRP
Rubbing strake	Wood with stainless steel
Deck material	GRP
Deck finish	non-skid moulded in
Cockpit deck finish	non-skid moulded in   Finished with teak
Antifouling (year)	04-2025
Dorades	yes
Window frame	aluminium
Deckhatch	5x Lewmar
Radar arch	non collapsible   Stainless steel pole
Fuel tank (litre)	Approx. 190 litre
Level indicator (fuel tank)	Wema



# WARRIOR 40 MK II

Freshwater tank (litre)	Approx. 400 litre (2x 200L)
Blackwater tank (litre)	Approx. 30 litre
Level indicator (blackwater)	Gobius 4
Wheel steering	yes
Outside helm position	yes
Emergency tiller	yes
More info on hull	Hull polished 04-2025
More info on paintwork	Two aluminium beaching legs

## ACCOMMODATION

Cabins	4
Berths	8
Interior	teak
Layout	Cabin with V-berth in the front, cabin with bunk bed, bathroom, saloon with galley, toilet with washbowl, two cabins in the stern.
Floor	wood
Open cockpit	yes
Saloon	yes
Heating	central hot water
Chart table	In the portside aft cabin
Opening door to cockpit	yes
Galley	yes
Countertop	yes
Sink	stainless steel   Double stainless steel sink
Cooker	calor gas   4 burner Mariner
Oven	Mariner
Fridge	Isothemp
Hot water system	220V + engine   Isothemp basic boiler
Water pressure system	electrical   Jabsco Par-Max 2.9
Manual and/or foot pump	yes
Owners cabin	v-bed



# WARRIOR 40 MK II

Wardrobe	hanging and shelves
Bathroom	shared
Toilet	Plastimo
Toilet system	manual
Wash basin	yes
Shower	yes
Guest cabin 1	bunk bed
Bed length (m)	1.85m
Wardrobe	hanging and shelves
Guest cabin 2	double bed
Bed length (m)	1.90m
Toilet	separate   RM69
Toilet system	manual
Wash basin	at the toilet
Guest cabin 3	double bed
Bed length (m)	1.85m
Wardrobe	shelves
Guest cabin 4	yes
Bed length (m)	yes
Wardrobe	yes

## MACHINERY

No of engines	1
Make	Volvo Penta
Type	MD22L
HP	50
kW	36.80
Fuel	diesel
Year of overhaul	Large engine service in 2021 o.a.: new 90 amp alternator, timing belt, water pump, all hoses, engine control, water injection bend, steering column serviced etc.
Engine cooling system	freshwater heat exchanger



# WARRIOR 40 MK II

Drive	sail-drive
Saildrive seal	2019
Engine controls	bowden cable Lewmar ( 2021)
Bowthruster	electric
Exhaust	yes
Propeller type	folding
Propeller blades	3 bladed propeller (serviced in 2022)
Manual bilge pump	yes
Electric bilge pump	yes
Start battery	1x (20-5-2025)
Service battery	2x 185 ah Exide (2024)
Battery monitor	Mastervolt battery monitor BTM-III, Vetus battery watch
Battery charger	yes
Inverter	yes
Solar panel	2x solarpanel with Victron Smartsolar charge controller MPPT 100/20 (2019)
Shorepower	with cable
Extra info	Engine hours approx. 5025, the analog hour counter broke down during a long voyage

## NAVIGATION

Compass	Silva liquid compass (2023)
Depth sounder	Raymarine ST60+ Depth
Log	Raymarine ST60+ Speed
Windset	Raymarine ST60+ Wind (need to be checked)
Repeater	Raymarine ST60+ Graphic
VHF	Icom IC-M410 with commandmic (2024)
Autopilot	Autohelm ST6000
Wind vane steering install.	Pacific Plus windpilot
Radar	Raytheon SL70 pathfinder with Raytheon dome
Plotter/GPS	Raymarine Axiom +9 multifunctioneel (2021)
AIS transponder	Em-Trak B953 klasse B (2021)



## EQUIPMENT

Sprayhood	Fixed sprayhood
Cockpit cover	complete tent over the cockpit
Bimini	(2022)
Cockpit table	Wooden table mounted on the steeringposition
Boarding ladder	Stainless steel with wooden steps
Anchor	Bruce   20KG
Anchor chain	Galvanized chain
Windlass	electrical   Lofrance Project (2020)
Sea railing	wire
Grab rail (superstructure)	yes
Pushpit	yes
Pulpit	yes
Life raft	container   Seago Offshore Raft-G-4
Last life raft survey	Need service
Danbuoy	Buoy with line on the stern
Fenders	yes
Mooring lines	yes
Radio	Kenwood
Clock - barometer	Schatz clock and barometer

## RIGGING

Rigging	cutter
Standing rigging	wire   New in 2019 by CS.Rigging
Brand mast	Kemp
Material mast	aluminium
Spreaders	2x
Mainsail cover	Mainsail cover with lazy jack system
Battcars	yes
Fully battened mainsail	Approx. 30.5m2
Jib	Approx. 39.8 m2 (2010)



# WARRIOR 40 MK II

Jib I	Approx. 12 m2 (2010) self tacking
Genoa furler	Furlex
Gennaker	Approx. 93,8 m2 (2005)
Reefing System	quick-one-line-reefing
Boomvang	mechanical and tackle   Kemp
Gennaker pole	aluminium
Extra info	4 x Lewmar 30 winches and 2 x Lewmar 44





# WARRIOR 40 MK II



# WARRIOR 40 MK II





# WARRIOR 40 MK II



# WARRIOR 40 MK II





# WARRIOR 40 MK II

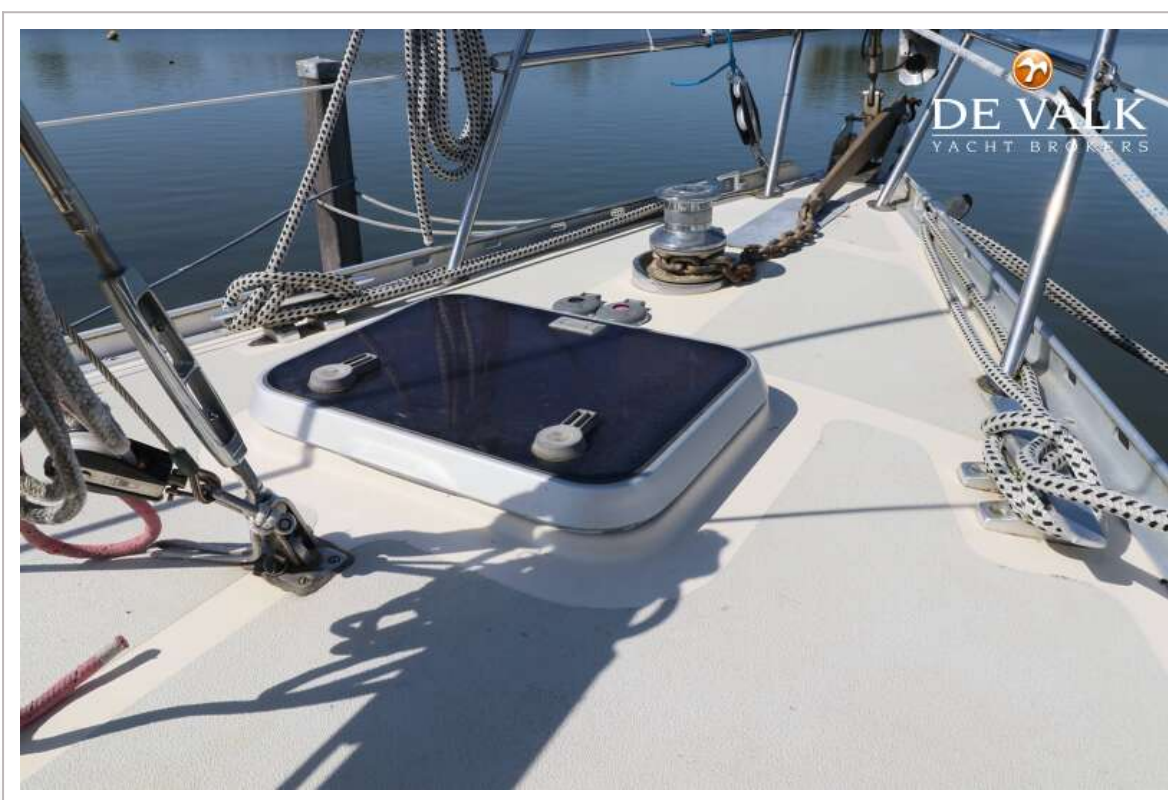


# WARRIOR 40 MK II





# WARRIOR 40 MK II



# WARRIOR 40 MK II





# WARRIOR 40 MK II



# WARRIOR 40 MK II





# WARRIOR 40 MK II

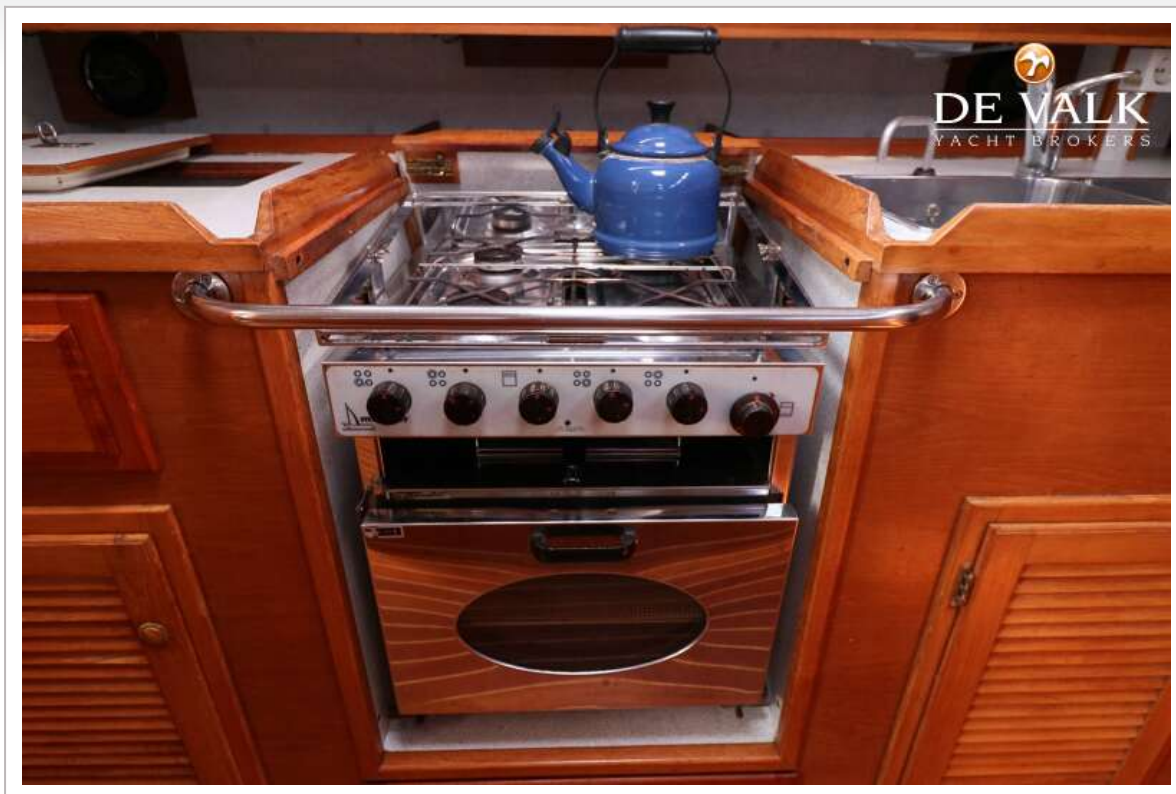


# WARRIOR 40 MK II





# WARRIOR 40 MK II

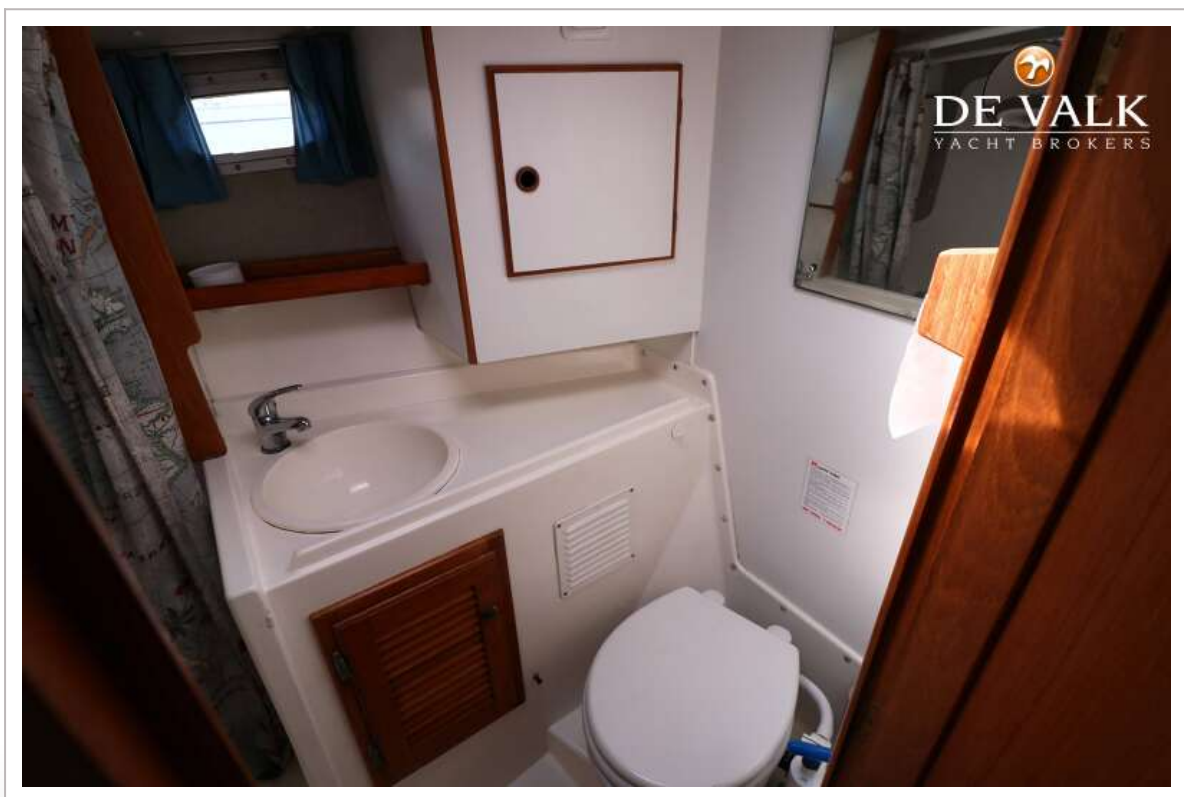


# WARRIOR 40 MK II





# WARRIOR 40 MK II

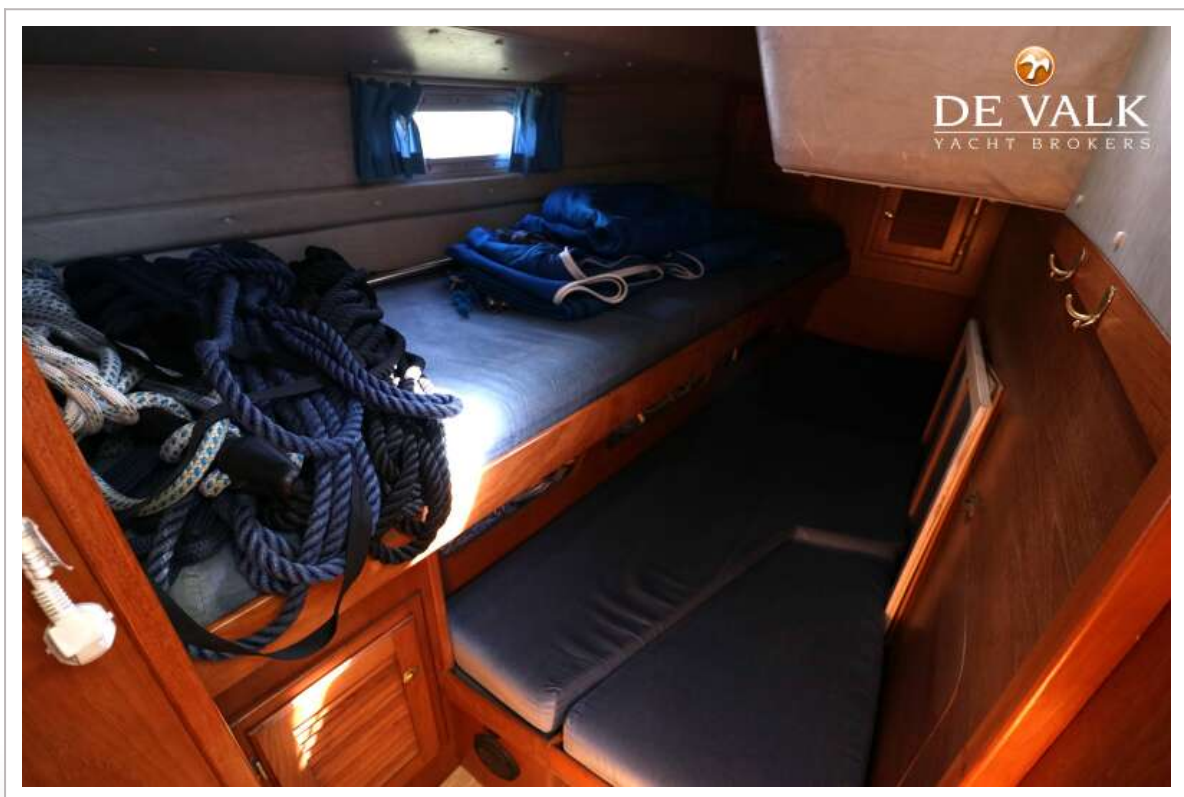


# WARRIOR 40 MK II





# WARRIOR 40 MK II

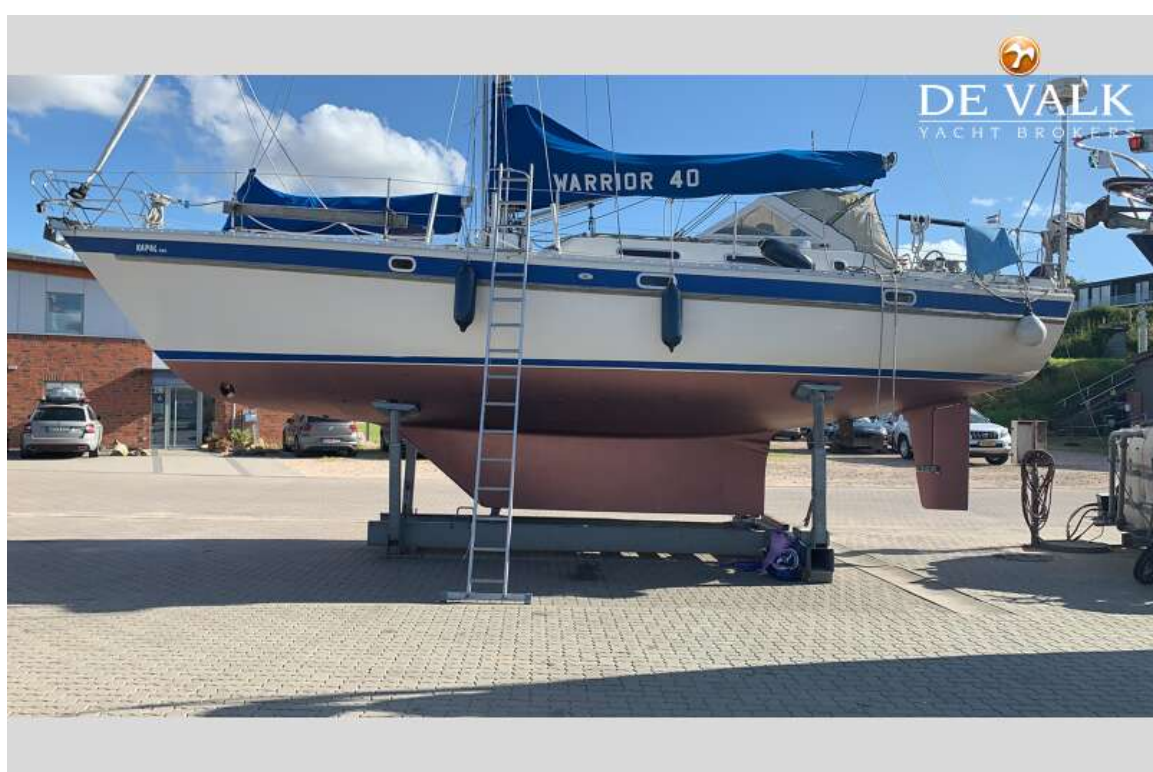


# WARRIOR 40 MK II





# WARRIOR 40 MK II



# WARRIOR 40 MK II





# WARRIOR 40 MK II

