



## GRAND SOLEIL 52 LC



# GRAND SOLEIL 52 LC

## BROKER'S COMMENTS

This GS 52 LC is an optimal fast-long cruiser by many described as a "masterpiece destined to last". The famous shipyard has yet again optimized performance and comfort in sailing with autonomy. The large, wide aft deck and cockpit have very comfortable access to the side decks and can convert into a fantastic dining area. The salon and 3 in-suite cabins have a light and open atmosphere. You will find that the yacht has been maintained excellently on a daily basis. Viewing highly recommended.

*Tue Simon Fasting*

## SPECIFICATIONS

<b>Dimensions</b>	16.10 x 4.90 x 2.60 (m)	<b>Builder</b>	Gran Soleil
<b>Built</b>	2019	<b>Cabins</b>	3
<b>Material</b>	GRP	<b>Berths</b>	6
<b>Engine(s)</b>	1 x Yanmar I32 common rail diesel	<b>Hp/Kw</b>	110.00 (hp), 80.96 (kw)
<b>Asking price</b>	€ 639.000 (VAT )	<b>Lying</b>	at sales office

## CONTACT

<b>Sales office</b>	De Valk Barcelona	<b>Telephone</b>	+34 932 202 825
<b>Address</b>	Barcelona region 08392 Barcelona ES	<b>E-mail</b>	barcelona@devalk.nl

## DISCLAIMER

These particulars are given in good faith as supplied but cannot be guaranteed.



# GRAND SOLEIL 52 LC

## GENERAL

Model	GRAND SOLEIL 52 LC
Type	sailing yacht
LOA (m)	16,10
Beam (m)	4,90
Draft (m)	2,60
Year built	2019
Builder	Gran Soleil
Country	Italy
Designer	Marco Losuzzi + Nauta Design
Displacement (t)	17
CE norm	A
Hull material	GRP
Hull shape	Mono hull
Keel type	L shape keel with cast iron blade and lead torpedo
Deck finish	Flexi teak 2G
Cockpit deck finish	Flexi teak 2G
Antifouling (year)	2024
Fuel tank (litre)	600
Level indicator (fuel tank)	yes
Freshwater tank (litre)	600 + 250
Level indicator (freshwater)	yes
Blackwater tank (litre)	One holding tank for each toilet (3)
Blackwater tank extraction	pump
Wheel steering	yes
Inside helm position	yes
Outside helm position	yes
Emergency tiller	yes
More info on hull	Sandwich with multiaxial E-glass skins and E-vinylester resin
Extra info	True design thru hulls and seacocks
Extra info	Carbon bowsprit integrated to the hull



## ACCOMMODATION

Cabins	3
Berths	6
Crew cabin	With shower
Crew berths	1
Interior	yes
Layout	3 cabin layout 1 master in bow 2 guest aft. All in-suite.
Floor	wood
Air-conditioning	reverse cycle airco
Chart table	yes
Galley	U-shaped starboard side
Sink	yes
Cooker	3 / gas. Bottle in bow by anchor.
Oven	yes
Extractor	yes
Gas alarm	yes
Microwave/oven combi	yes
Fridge	Front opening fridge 90 L
Freezer	yes
Hot water system	220V + engine
Water pressure system	electrical
Manual and/or foot pump	Fresh and raw water
Ice maker	yes
Crockery	yes
Owners cabin	(forward cabin) Doble bed
Wardrobe	hanging/drawers/shelves
Bathroom	en suite
Toilet system	electric Tecma
Shower	With teak flooring
Guest cabin 1	(aft starboard) twin with conversion to double
Wardrobe	drawers and shelves



# GRAND SOLEIL 52 LC

Bathroom	en suite
Toilet system	electric Tecma
Shower	With teak flooring
Guest cabin 2	double bed
Wardrobe	drawers and shelves
Bathroom	en suite
Toilet system	manual
Shower	With teak flooring
Crew cabin(s)	1
Toilet (crew)	1
Shower (crew)	1

## MACHINERY

No of engines	1
Make	Yanmar
Type	I32 common rail
HP	110
kW	80.96
Fuel	diesel
Year installed	2019
Engine cooling system	freshwater heat exchanger
Engine controls	electrical
Gearbox	hydraulic
Engine controls	electrical
Bowthruster	24V propeller
Exhaust	watercooled
Manual bilge pump	yes
Electric bilge pump	yes
Generator	FISCHER PANDA 8000i 230V-6kW 2200-2800rpm
Batteries	Extra lithium 100 amp
Start battery	Exide 70Ah AGM



# GRAND SOLEIL 52 LC

Service battery	6 X Exide AGM 12V 570 Ah
Bowthruster battery	AGM Exide battery 70Ah
Battery charger	Victron
Inverter	Victron 5000 Amp
Shorepower	with cable
Watermaker	Schenker 60l /h

## NAVIGATION

Compass	yes
Electric compass	yes
Multi control display	2 X B&G ZEUS3 9" both consoles 1 X B&G ZEUS3 12" nav. table
Depth sounder	B&G
Forw. looking depth sounder	B&G
Log	B&G
Windset	B&G
VHF	V50
VHF handheld	yes
Autopilot	B&G H5000 with wireless remote WR10 B&G
Rudder angle indicator	yes
Radar	B&G Halo-24 48NM radar antenna on first spreader
Plotter/GPS	B&G
Electronic chart(s)	yes
AIS transponder	Simrad B&G Nais 500 B class
EPIRB	yes
Navigation lights	yes

## EQUIPMENT

Sprayhood	Cadet grey
Bimini	Cadet grey
Cockpit cushions	yes



# GRAND SOLEIL 52 LC

Cockpit table	yes
Bathing platform	Stern platform with hydraulic opening
Transom door	With remote control
Gangway	yes
Deck shower	yes
Anchor	Delta 25kg
Anchor chain	50 m with counter on windlass
Dinghy	Hondawave con Motor honda 15 HP
Life raft	yes
Lifejackets	yes
Fenders	6
TV	LG 49"
Radio	yes
Speakers in salon	yes
Speakers in cabin	yes
Fire extinguisher	yes
Extra info	Fusion Apollo RA-770 touch screen,WIFI, Air Play, DAB, Bluetooth

## RIGGING

Rigging	sloop
Standing rigging	wire
Brand mast	Sparcraft
Material mast	aluminium "standard
Mainsail	North Sail 3Di endurance
Genoa I	North Sail 3Di endurance
Reefing System	main in-mast furling
Backstay adjuster	hydraulic
Boomvang	hydraulic
Primary sheet winch	2 X electric Harken radial chromed 60
Secondary sheet winch	2 X electric Harken radial chromed 50





# GRAND SOLEIL 52 LC

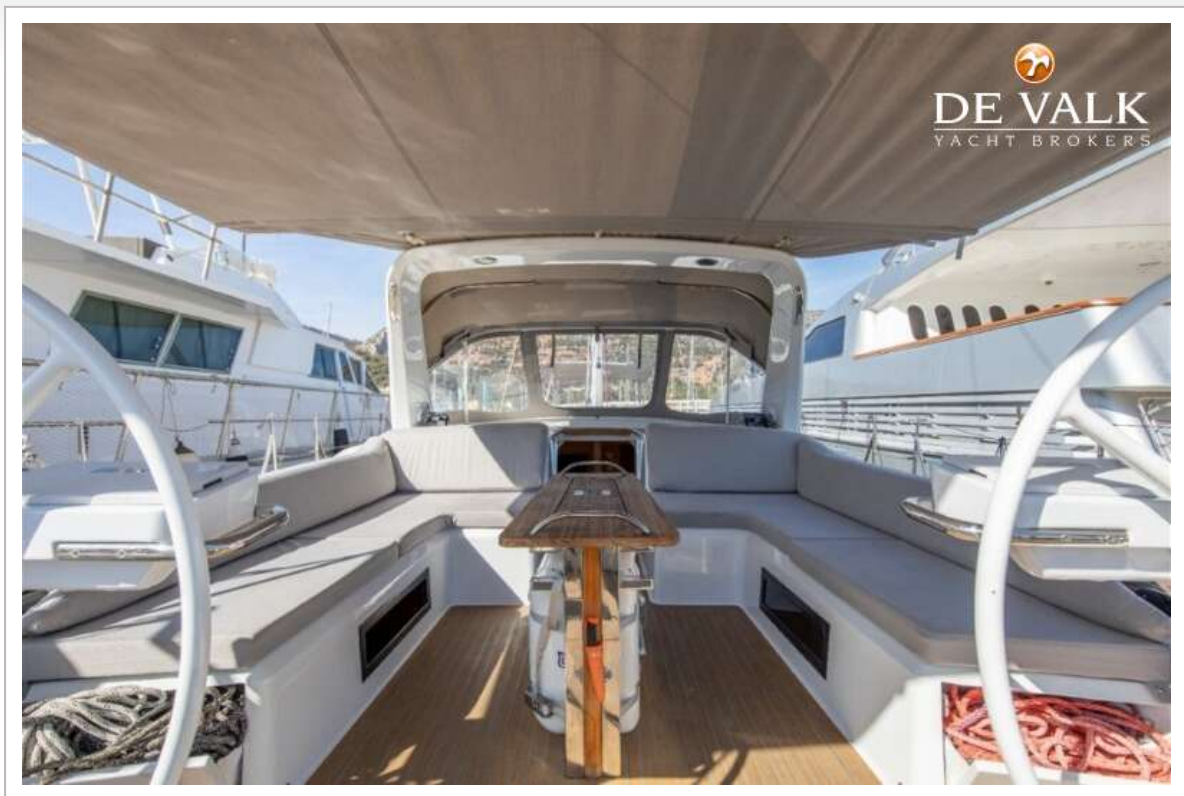




# GRAND SOLEIL 52 LC



# GRAND SOLEIL 52 LC

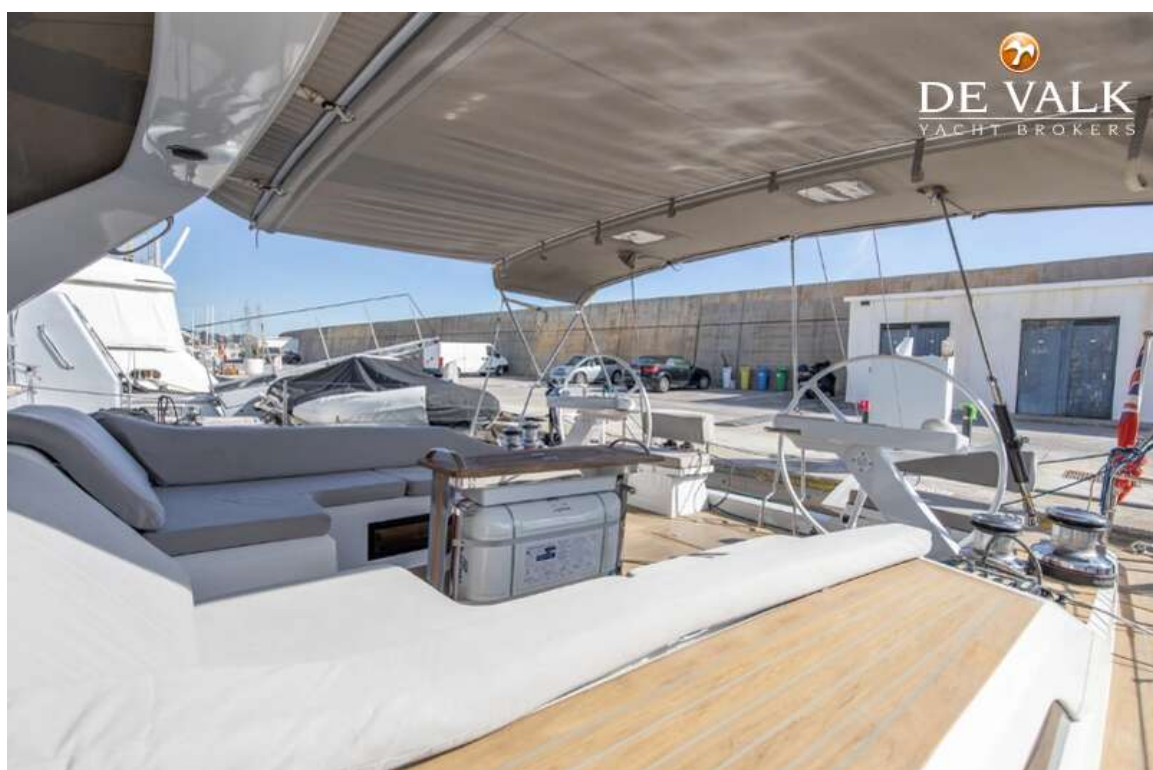




# GRAND SOLEIL 52 LC



# GRAND SOLEIL 52 LC





# GRAND SOLEIL 52 LC



# GRAND SOLEIL 52 LC



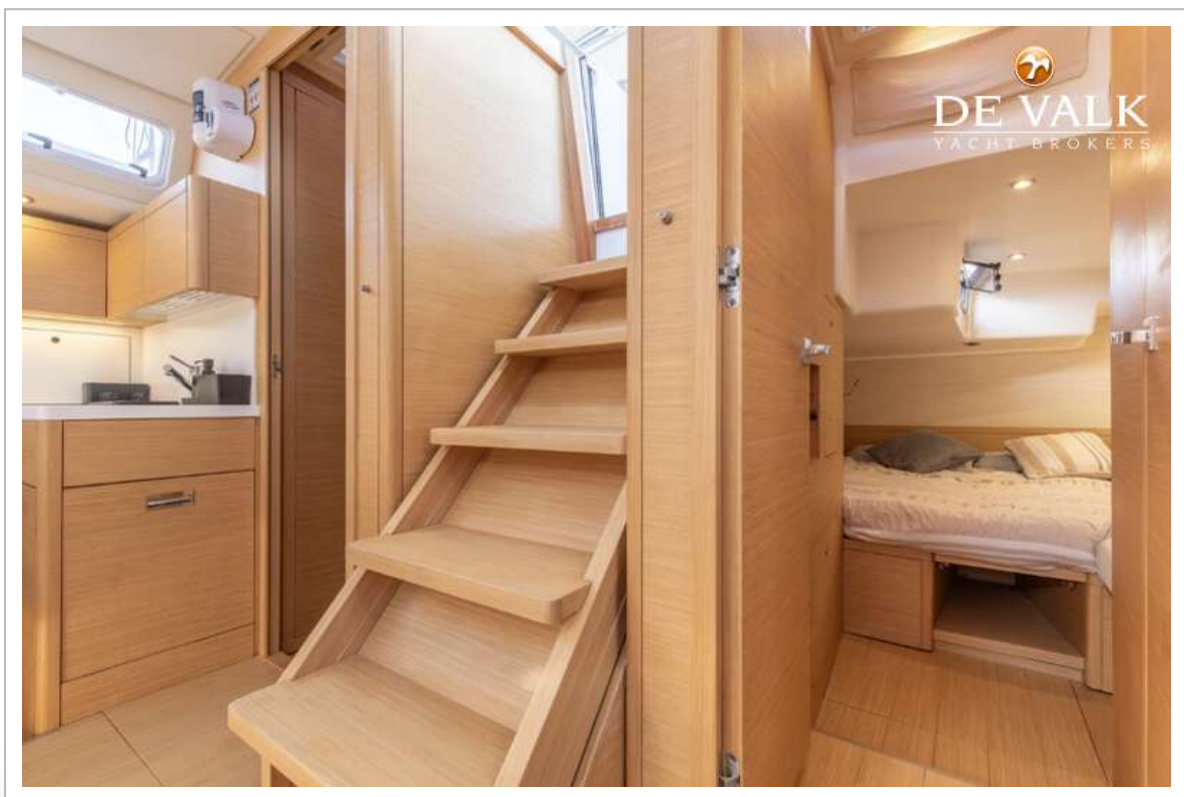
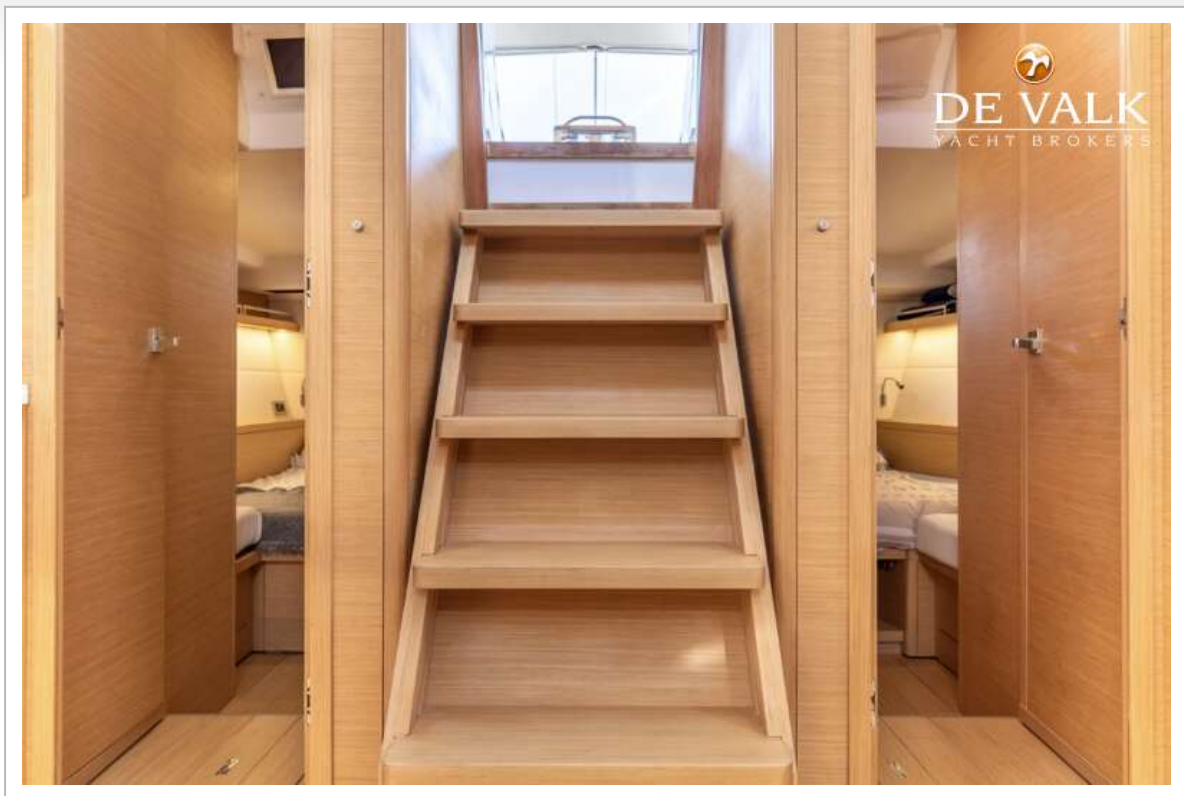


# GRAND SOLEIL 52 LC





# GRAND SOLEIL 52 LC



# GRAND SOLEIL 52 LC



# GRAND SOLEIL 52 LC

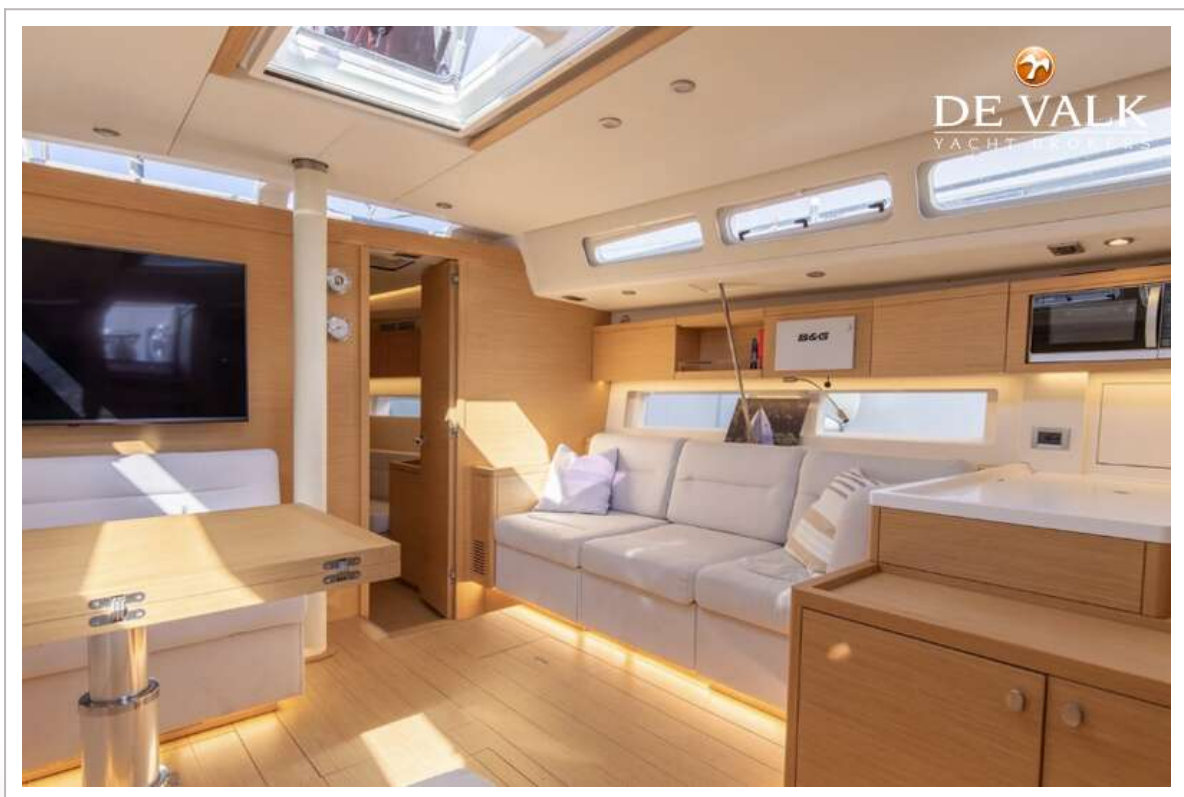
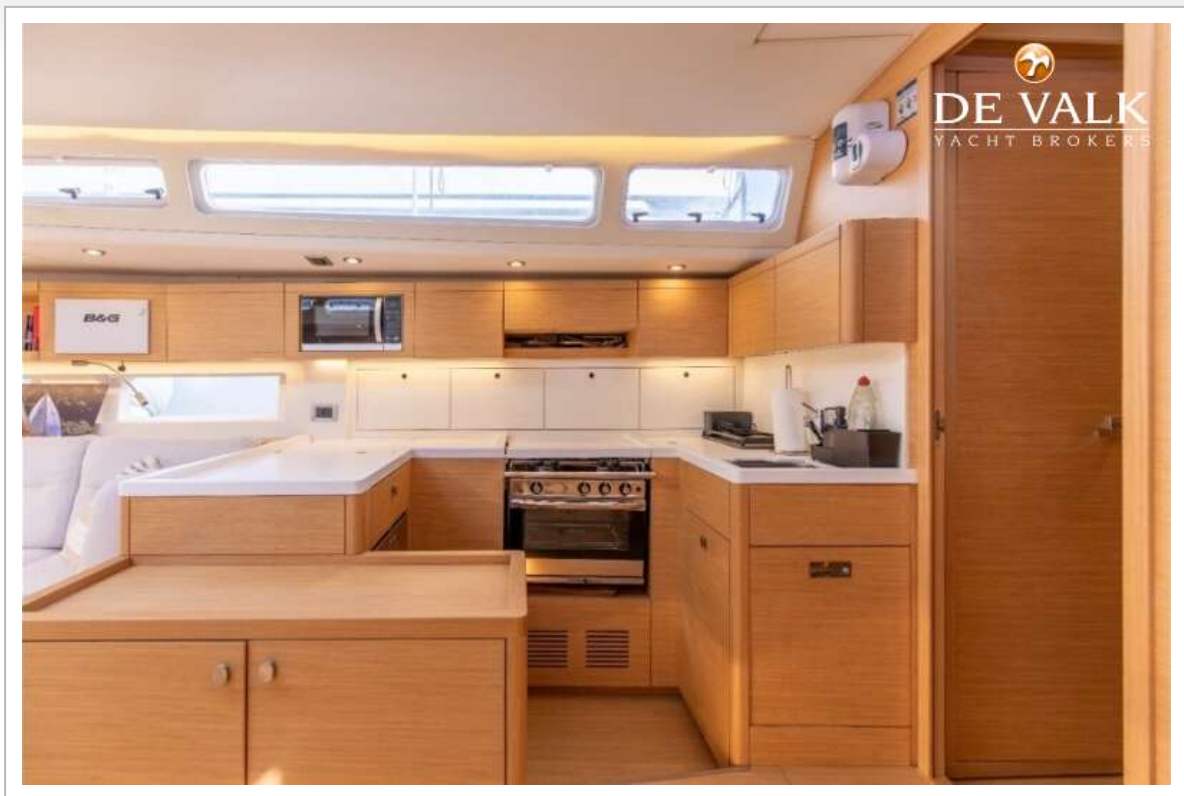




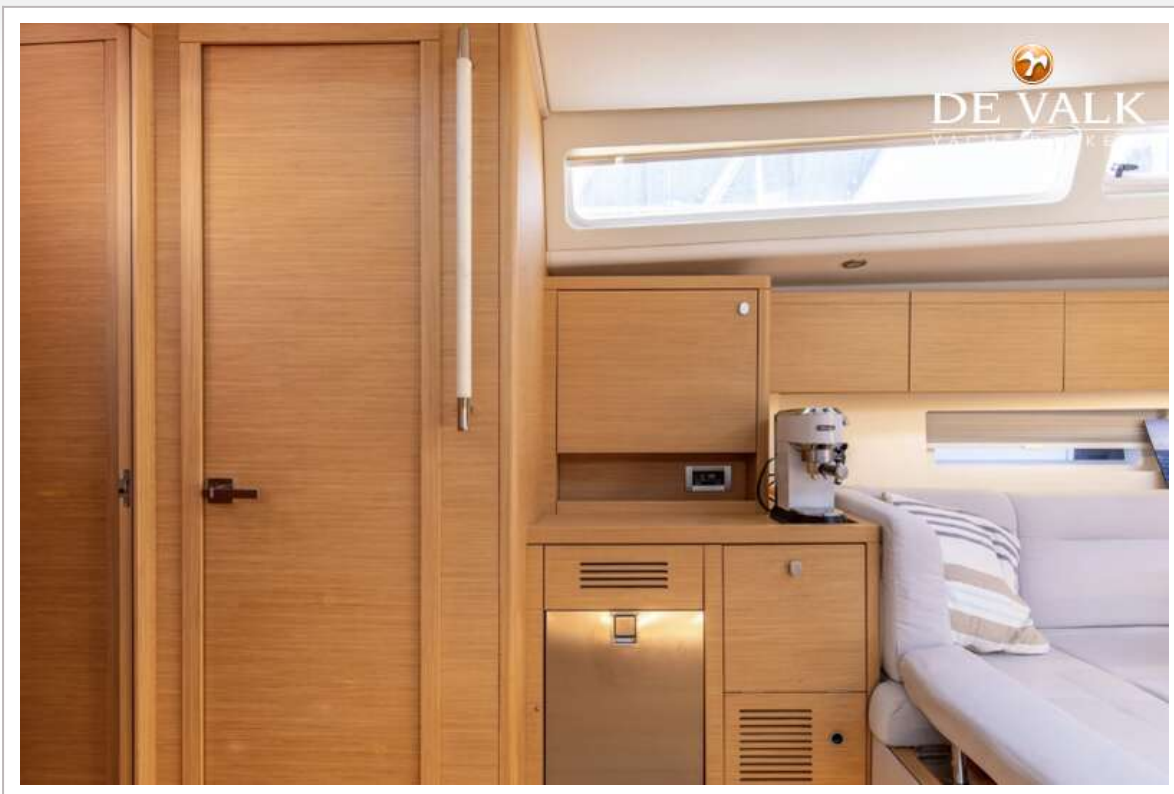
# GRAND SOLEIL 52 LC



# GRAND SOLEIL 52 LC

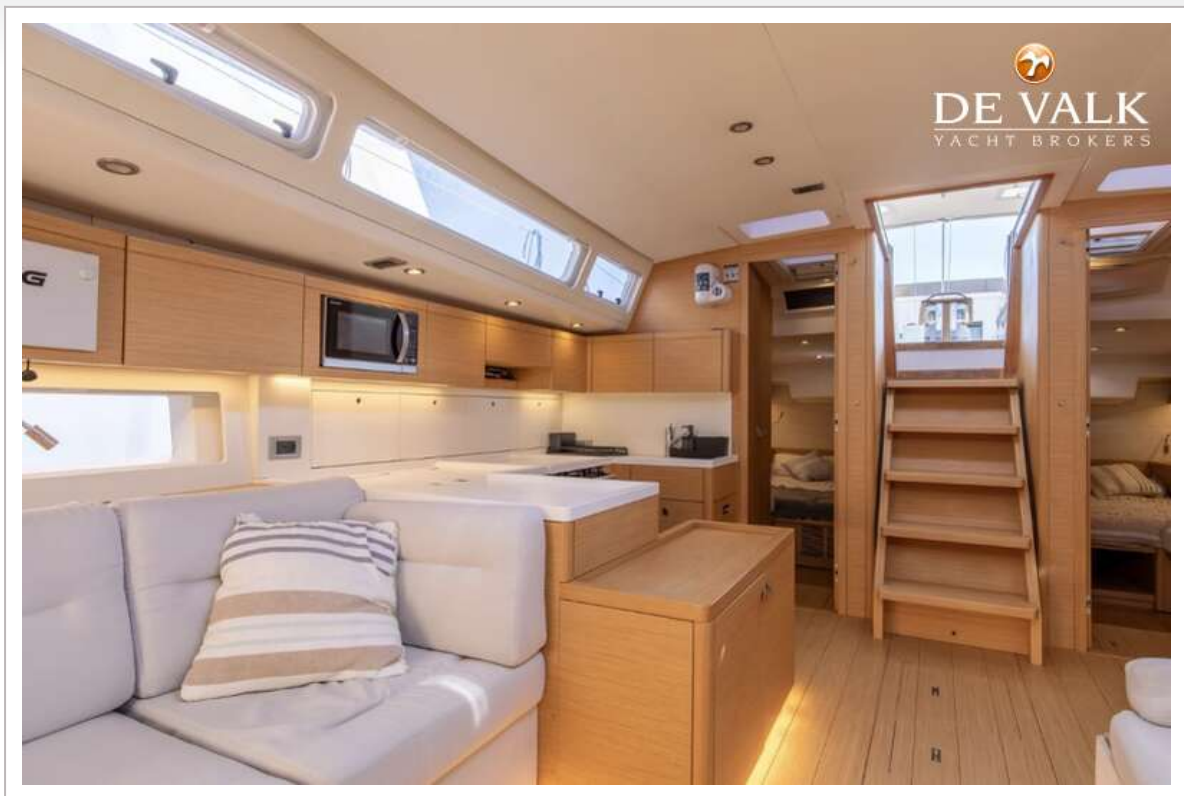


# GRAND SOLEIL 52 LC





# GRAND SOLEIL 52 LC





# GRAND SOLEIL 52 LC

