



FAIRLINE TARGA 48

FAIRLINE TARGA 48

BROKER'S COMMENTS

The Fairline Targa 48 OPEN represents a new era of Fairline Yachts, combining sleek design with modern technology for the ultimate cruising experience. Designed for those who seek both performance and comfort, this express cruiser features IPS propulsion, a hi-lo platform, a spacious dinghy garage, large sunbed areas, a hardtop, and a luxurious mid-master cabin. This particular Targa 48 OPEN boasts an extensive list of premium options. Its white hull and timeless design ensure it stands out in any marina. Over the last year, around €100,000 has been invested into the boat.

Filip Mimica

SPECIFICATIONS

Dimensions	15.64 x 4.32 x 1.17 (m)	Builder	FAIRLINE BOATS
Built	2014	Cabins	2
Material	GRP	Berths	4
Engine(s)	2 x Volvo IPS diesel	Hp/Kw	2 x 435.00 (hp), 320.16 (kw)
Asking price	€ 550.000 (VAT Paid)	Lying	Croatia

CONTACT

Sales office	De Valk Dalmatia	Telephone	0031 653 299 244
Address	Ul. Velimira Skorpika 22000 Sibenik HR	E-mail	dalmatia@devalk.nl

DISCLAIMER

These particulars are given in good faith as supplied but cannot be guaranteed.



FAIRLINE TARGA 48

GENERAL

Model	FAIRLINE TARGA 48
Type	motor yacht
LOA (m)	15,64
Beam (m)	4,32
Draft (m)	1,17
Air draft (m)	4,60
Headroom (m)	1,92
Year built	2014
Launched	2014
Builder	FAIRLINE BOATS
Country	United Kingdom
Displacement (t)	13
Hull material	GRP
Hull colour	off-white White
Hull shape	deep-V
Superstructure material	GRP
Rubbing strake	aluminum
Deck material	teak
Deck finish	teak
Superstructure deck finish	teak
Cockpit deck finish	teak
Antifouling (year)	2024 2024
Window material	tempered glass
Deckhatch	yes
Portholes	yes
Radar arch	non collapsible
Fuel tank (litre)	675
Fuel tank 2 (litre)	675
Freshwater tank (litre)	440
Level indicator (freshwater)	yes



Blackwater tank (litre)	yes
Level indicator (blackwater)	yes
Blackwater tank extraction	deck extraction + pump
Wheel steering	powersteer
Emergency tiller	yes

ACCOMMODATION

Cabins	2
Berths	4
Interior	oak
Floor	carpet
Open cockpit	yes
Headroom saloon (m)	1,92m
Sliding roof	electric Canvas roof
Air-conditioning	reverse cycle airco In all the cabins and in saloon
Sliding door to cockpit	yes
Galley	yes
Countertop	granite
Sink	stainless steel
Cooker	electric Dometic 2-burner
Microwave/oven combi	Sharp
Fridge	Full hight
Freezer	yes
Hot water system	220V + engine
Water pressure system	electrical
Kettle	yes
Hot water tap	yes
Coffee maker	yes
Owners cabin	French bed Headroom 1,92 m
Bed length (m)	1,95 x 1,50
Wardrobe	hanging/drawers/shelves



FAIRLINE TARGA 48

Bathroom	en suite
Toilet	en suite In the bathroom
Toilet system	electric Dometic
Wash basin	in the bathroom
Shower	en suite In the bathroom
Guest cabin 1	v-bed Forward, headroom 1,93 m
Bed length (m)	2,00 x 0,70 x 2 or 2,00 x 1,40
Wardrobe	hanging/drawers/shelves
Bathroom	en suite
Toilet	en suite In the bathroom
Toilet system	electric Dometic
Wash basin	in the bathroom In the bathroom
Shower	en suite In the bathroom
Wet bar	In cockpit, sink, fridge, icemaker, griddle
Tender garage	For Williams turbo jet

MACHINERY

No of engines	2
Make	Volvo
Type	IPS
HP	435
kW	320.16
Fuel	diesel
Year installed	2014
Year of overhaul	2024
Maximum speed (kn)	28
Cruising speed (kn)	23
Engine hours	661
Engine cooling system	freshwater heat exchanger
Drive	IPS
Engine controls	electrical



FAIRLINE TARGA 48

Bowthruster	electric Sidepower
Exhaust	watercooled
Propeller type	fixed Volvo DuoProp
Propeller blades	4 + 3
Manual bilge pump	yes
Electric bilge pump	yes
Electrical installation	12 V & 230 V
Generator	silent separator Cummins Onan 11 kVA
Batteries	Lithium
Start battery	yes
Service battery	yes
Navigation Battery	yes
Electric engine battery	yes
Generator battery	yes
Bowthruster battery	yes
Battery charger	yes
Inverter	Phoenix 12/1200
Battery charger/inverter	Chargemaster 12/70-3
Diode battery combiners	yes
Shorepower	yes
Watermaker	yes
Trimtabs	Volvo Penta
Extra info	Dockmate wireless remote control
Extra info	Garmin wind indicator

NAVIGATION

Compass	yes
Electric compass	yes
Multi control display	Garmin
Depth sounder	Garmin
Log	Garmin



FAIRLINE TARGA 48

Windset	Garmin GNX Wind
Fish finder	Garmin GSR maps 9000
VHF handheld	yes
Autopilot	Garmin GHP20, with wireless remote control
Radar	Garmin GMR24HD
GPS	Garmin
Plotter	Garmin 8416xsv 16 inch
AIS receiver	yes
Navigation lights	yes
Searchlight	yes
Extra info	Volvo Penta 7" multi-function color display

EQUIPMENT

Fixed windscreen	yes
Cockpit cover	Sand color
Cockpit cushions	Sand color
Cockpit table	Folds
Cockpit chairs	Two wooden
Bathing platform	Hi-lo electric/hydraulic
Boarding ladder	stainless steel
Transom door	yes
Gangway	2,9m hydraulic letterbox style
Deck shower	Hot & cold
Anchor	Rocna
Anchor chain	10mm
Windlass	electrical Lewmar
Capstan	Windlass
Dinghy	Williams 285 turbo jet from 2023, 11h
Sea railing	stainless steel
Grab rail (superstructure)	stainless steel
Life raft	valise (or bag)

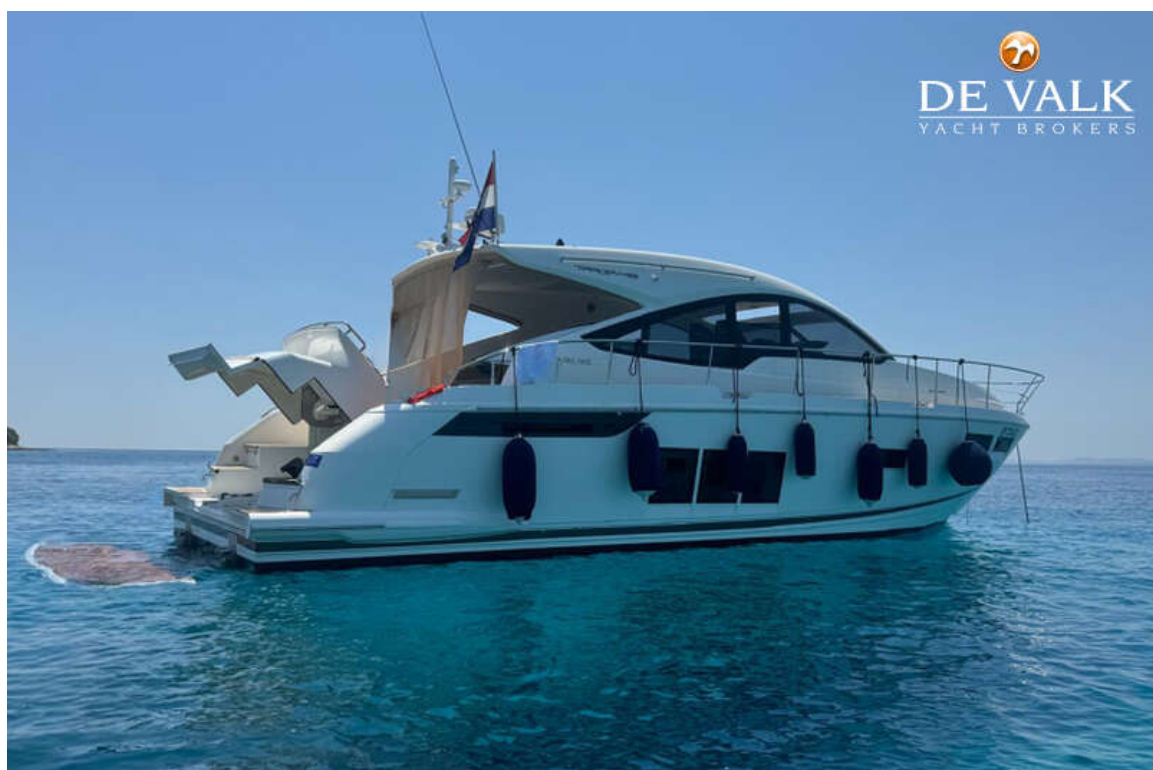


FAIRLINE TARGA 48

Life raft (pers)	valise (or bag)
Last life raft survey	Every 5 years
Lifejackets	yes
Wiper	yes
Horn	electric
Fenders	10 pax
Mooring lines	yes
Tools	yes
TV	In saloon
TV receiver	yes
Radio	Fusion, new surand system in cockpit from 2024
Surround Sound System	yes
Sub-woofer	JL sub woofer in cockpit
Cockpit speakers	New 2024
Speakers in salon	2x
Speakers in cabin	2x
Fire extinguisher	yes
Latest extinguisher survey	yes
Extinguisher in engine room	yes
Auto extinguisher system	yes
Extra info	Under water light



FAIRLINE TARGA 48



FAIRLINE TARGA 48



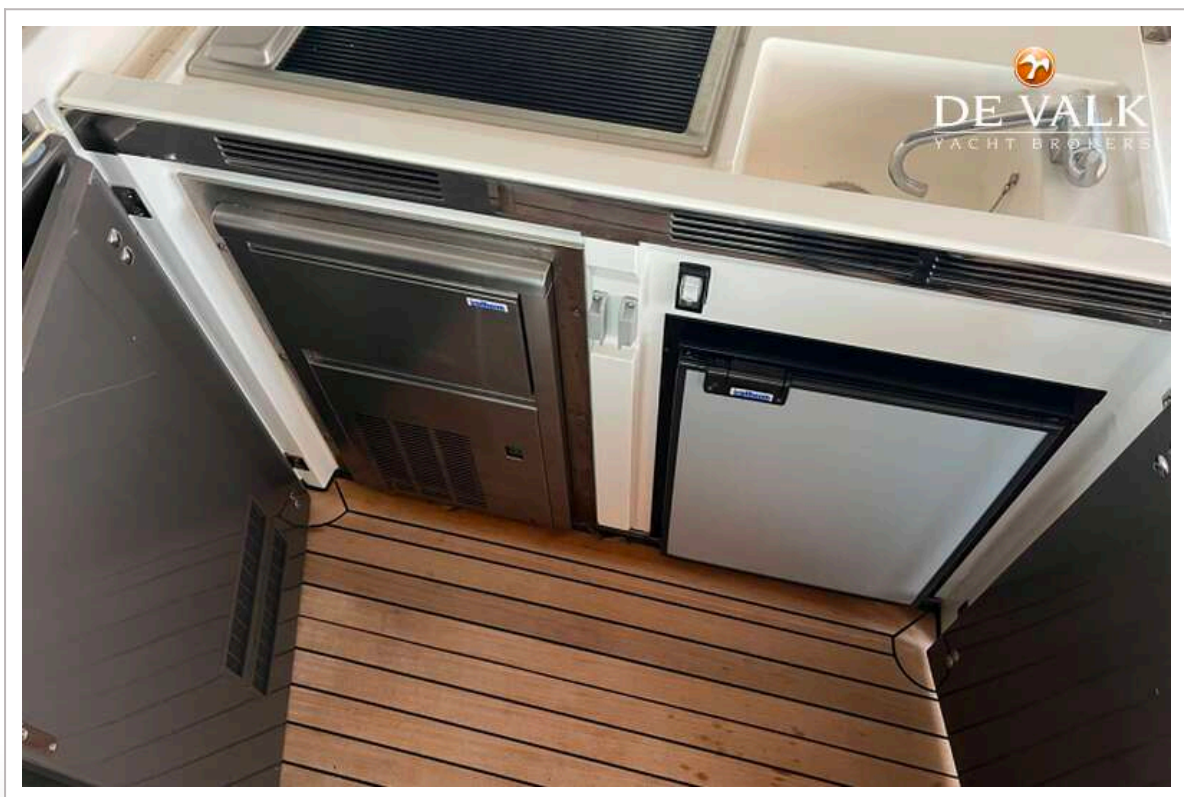
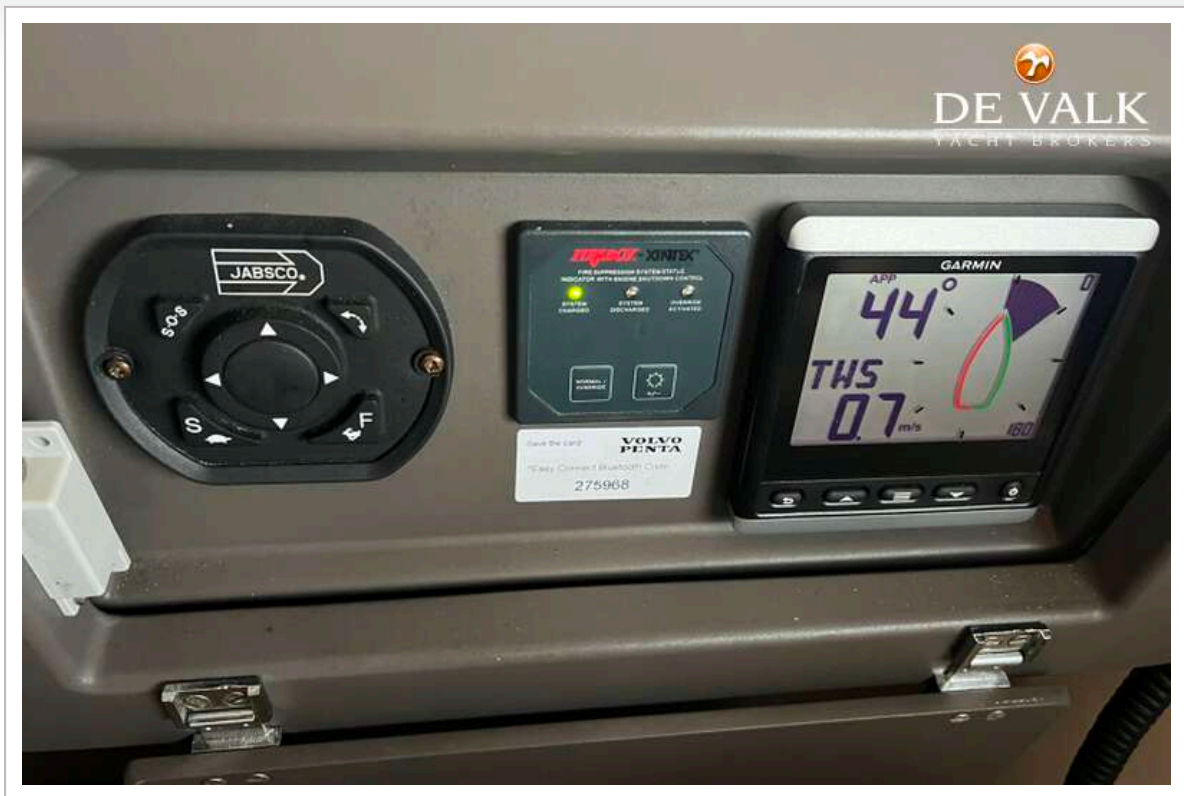
FAIRLINE TARGA 48



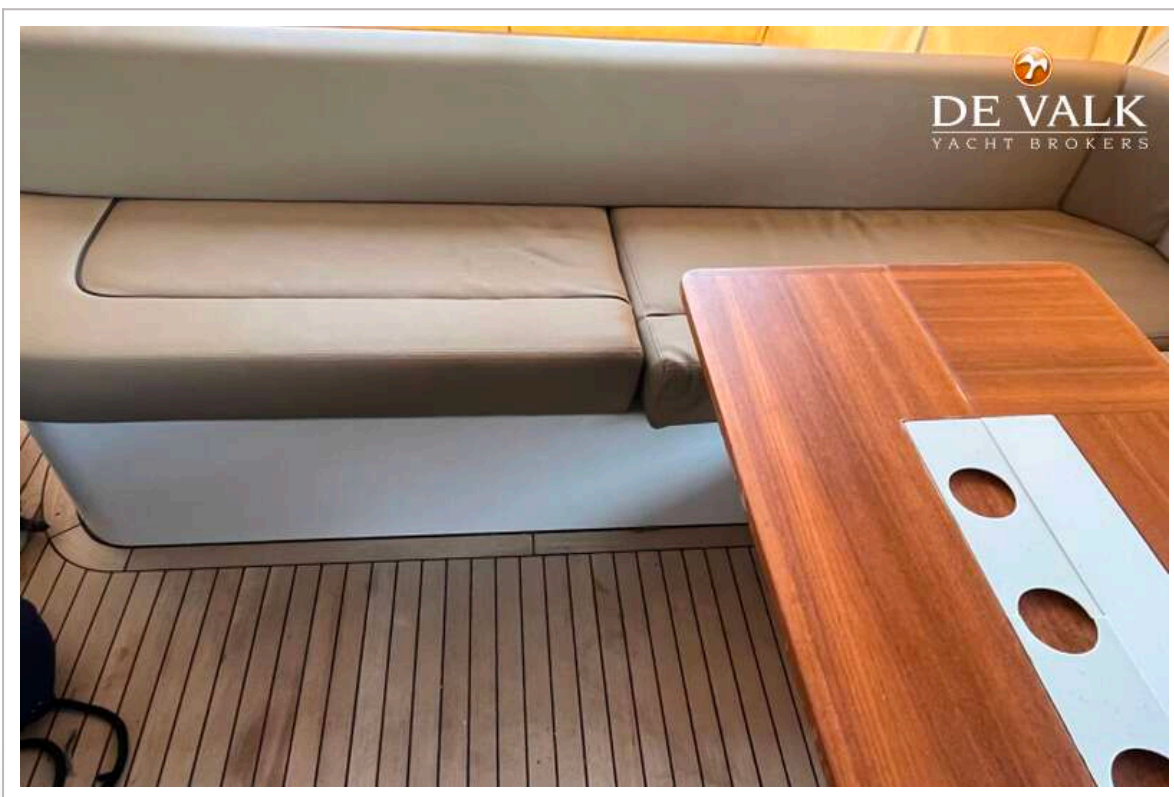
FAIRLINE TARGA 48



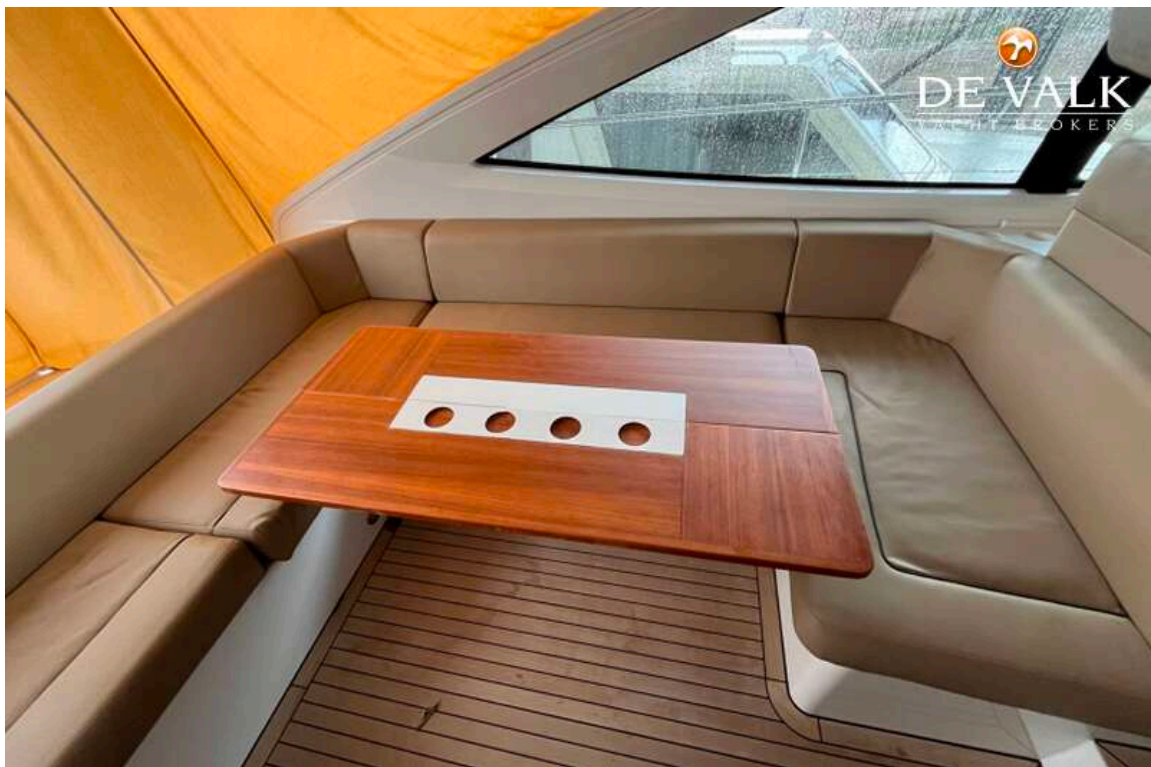
FAIRLINE TARGA 48



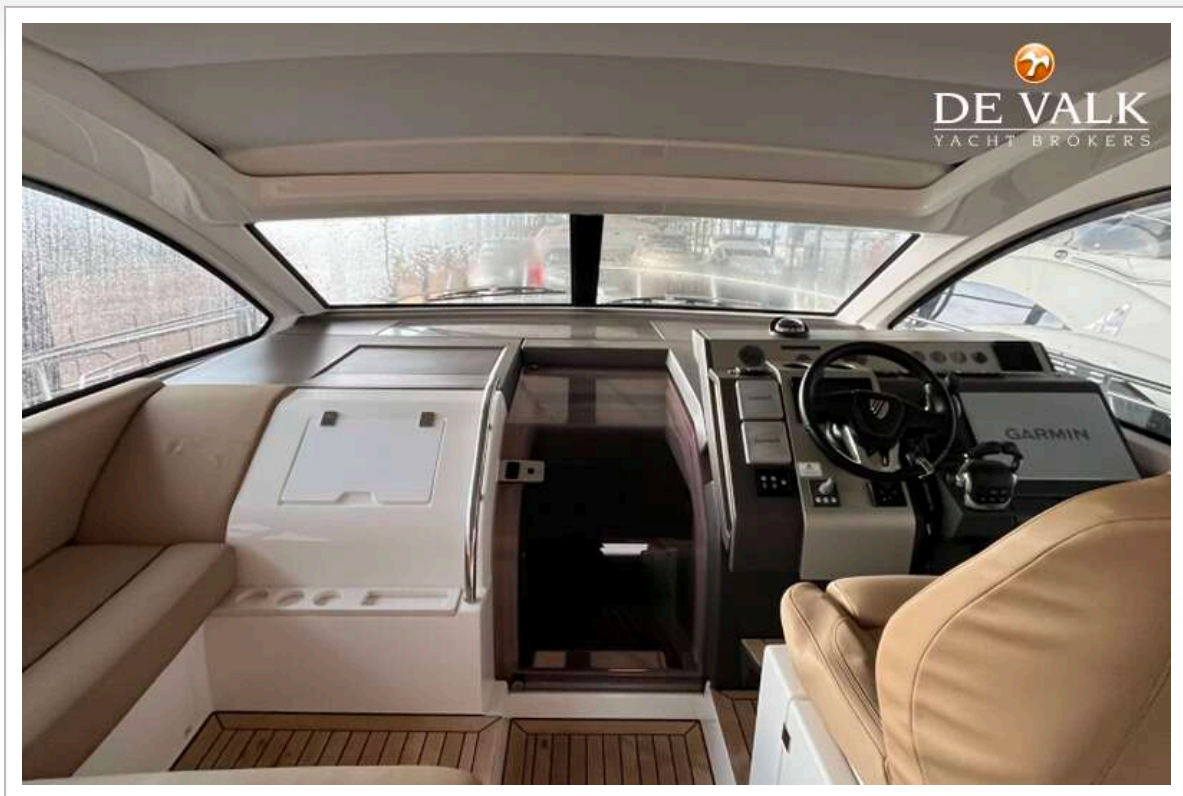
FAIRLINE TARGA 48



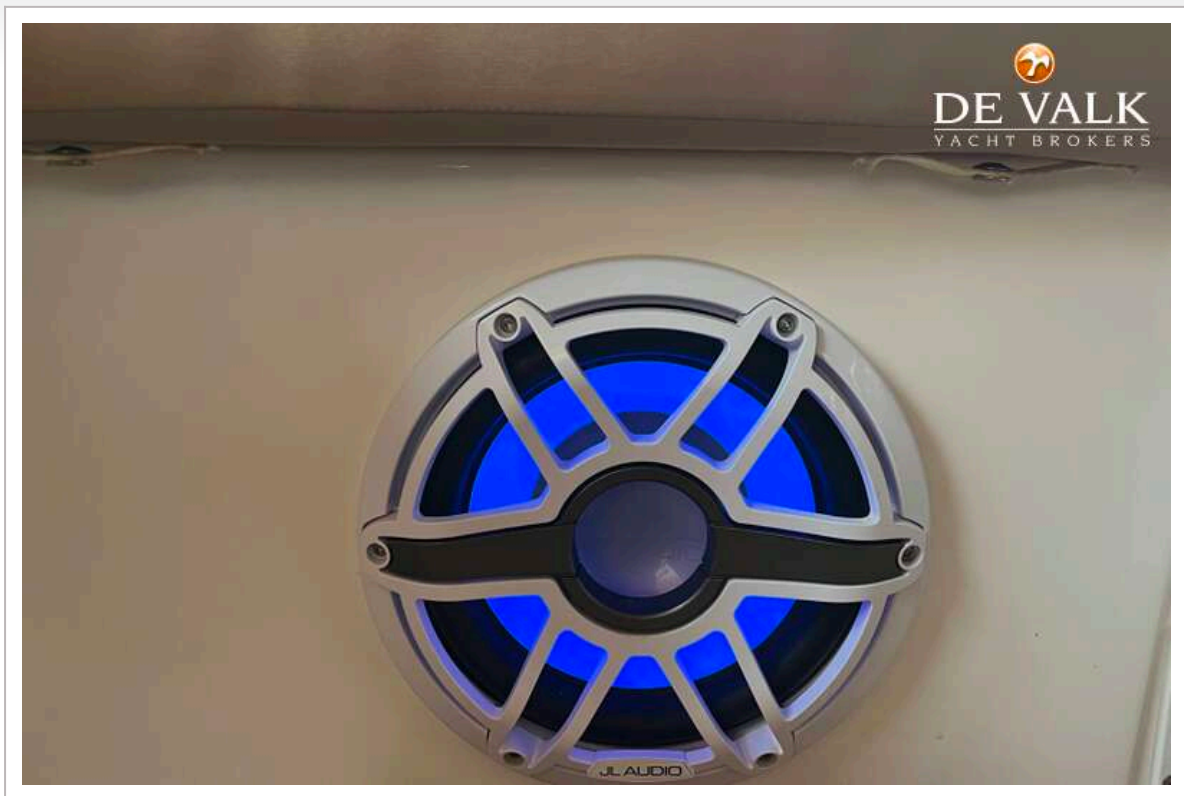
FAIRLINE TARGA 48



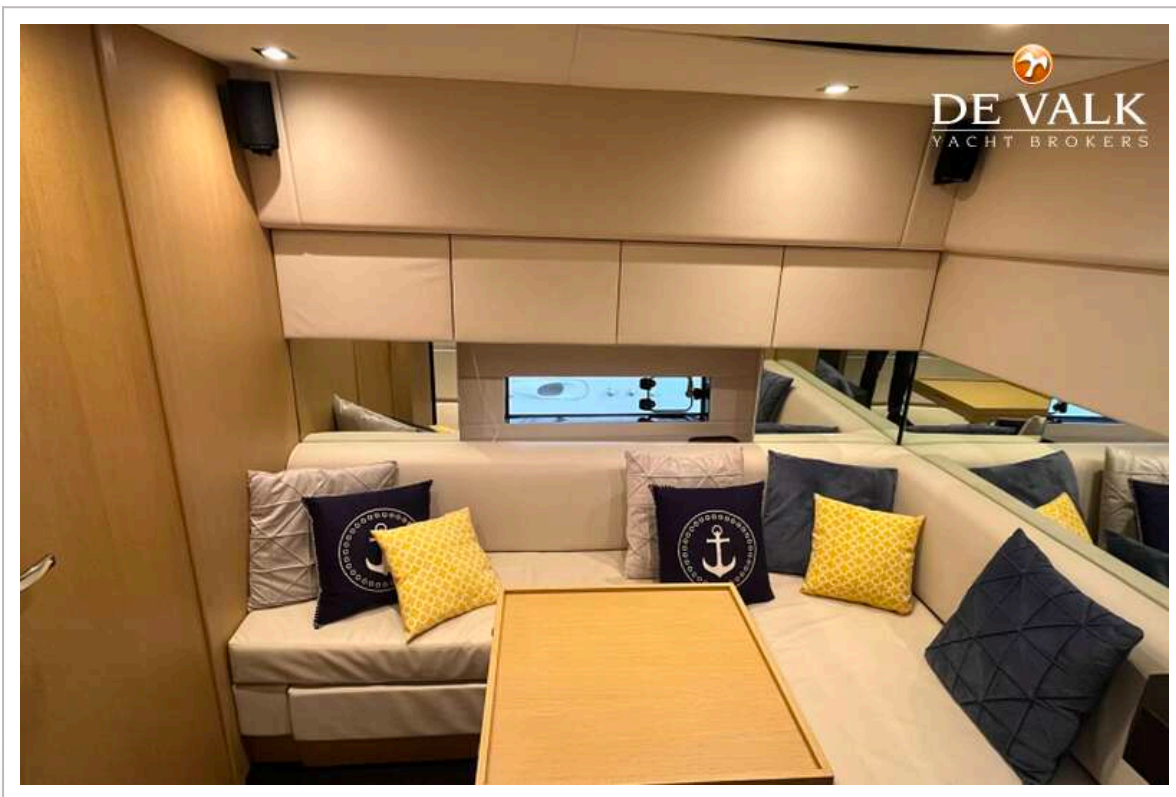
FAIRLINE TARGA 48



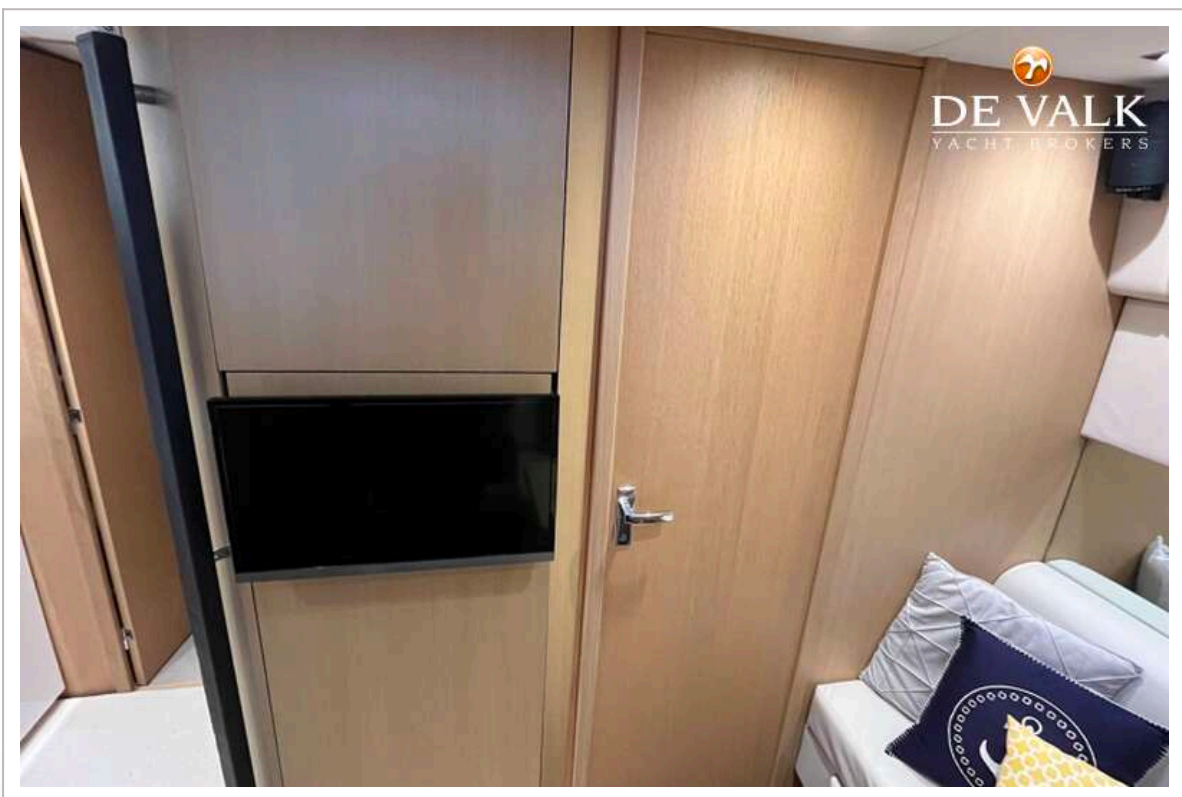
FAIRLINE TARGA 48



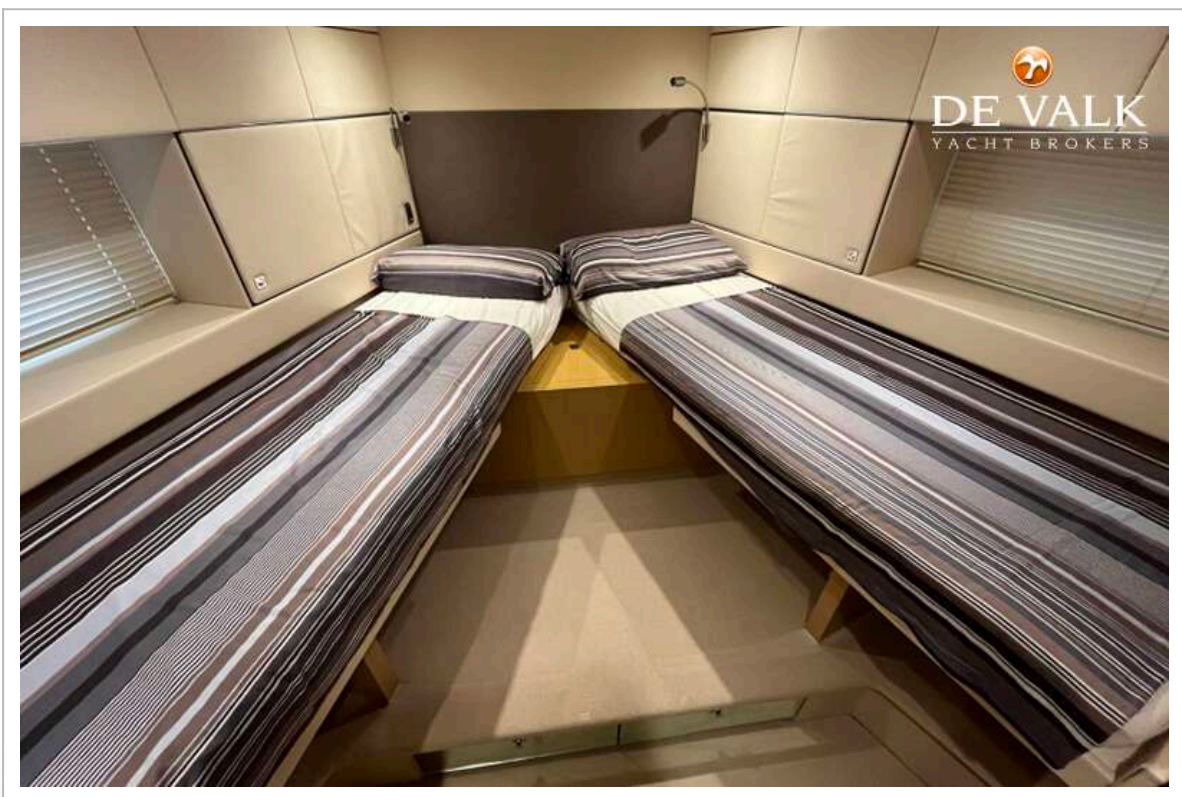
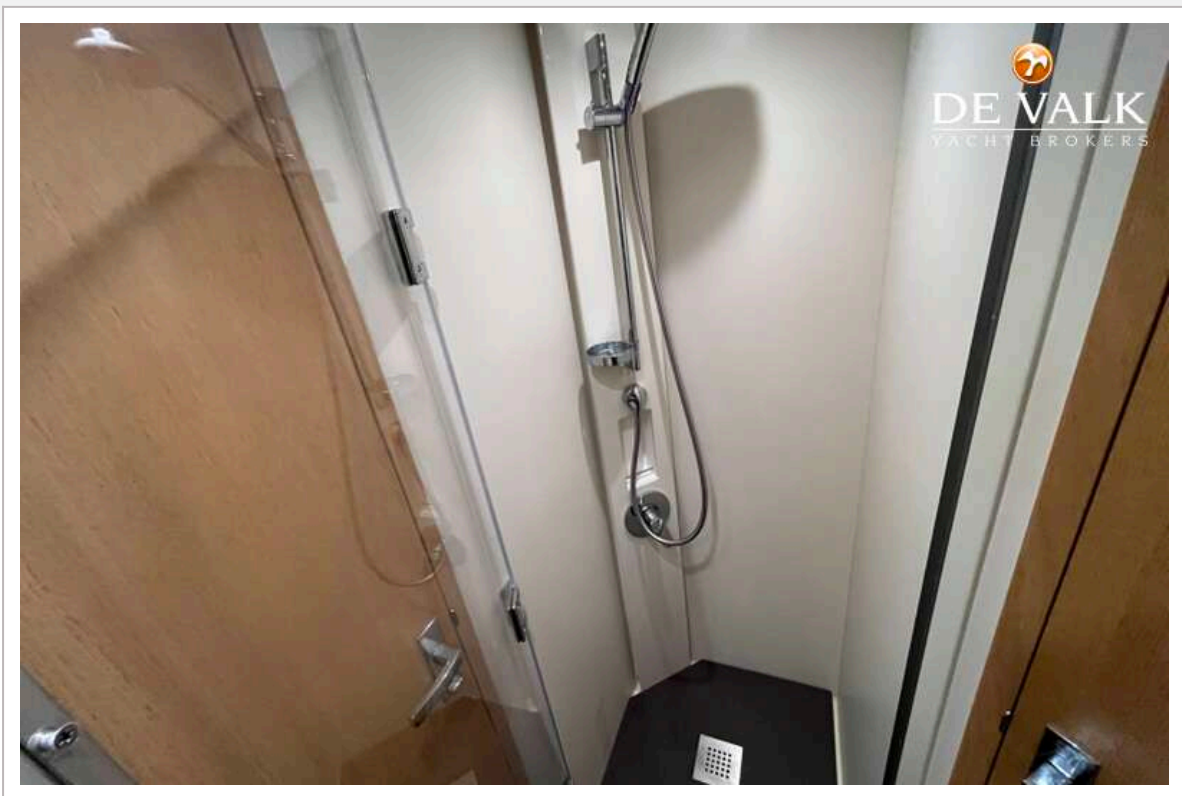
FAIRLINE TARGA 48



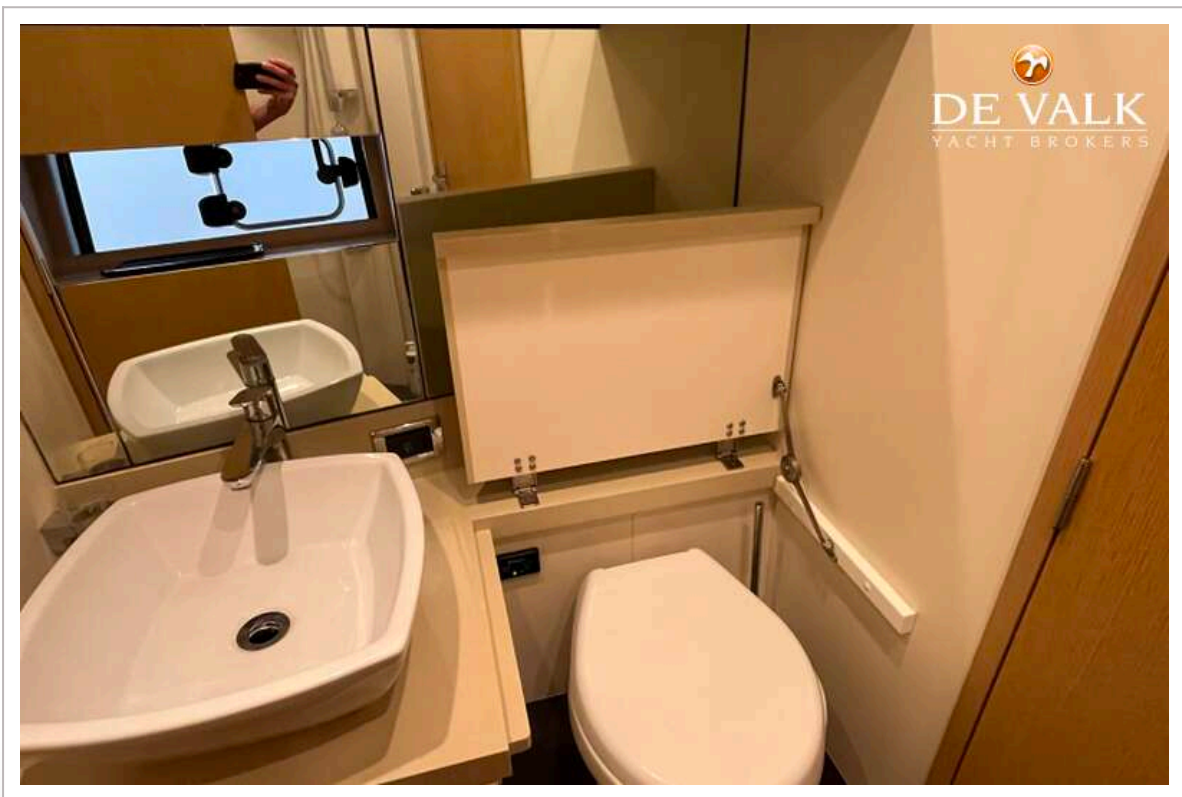
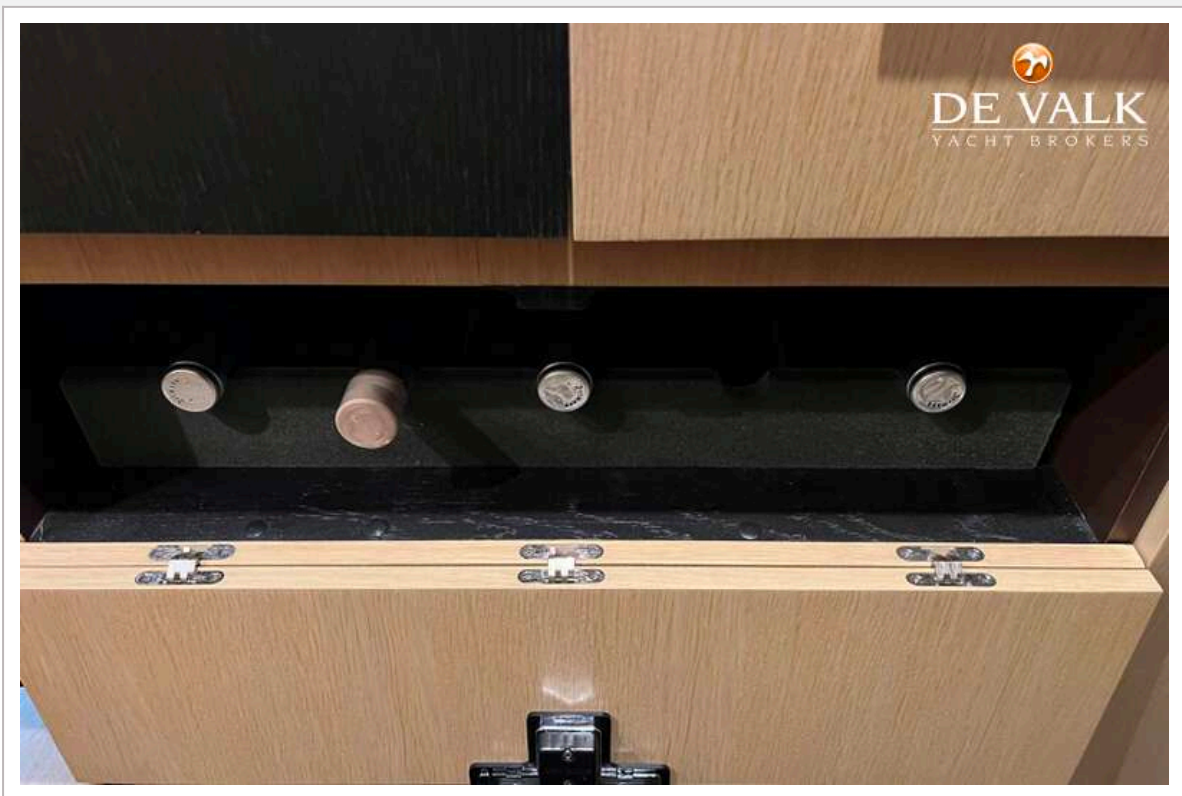
FAIRLINE TARGA 48



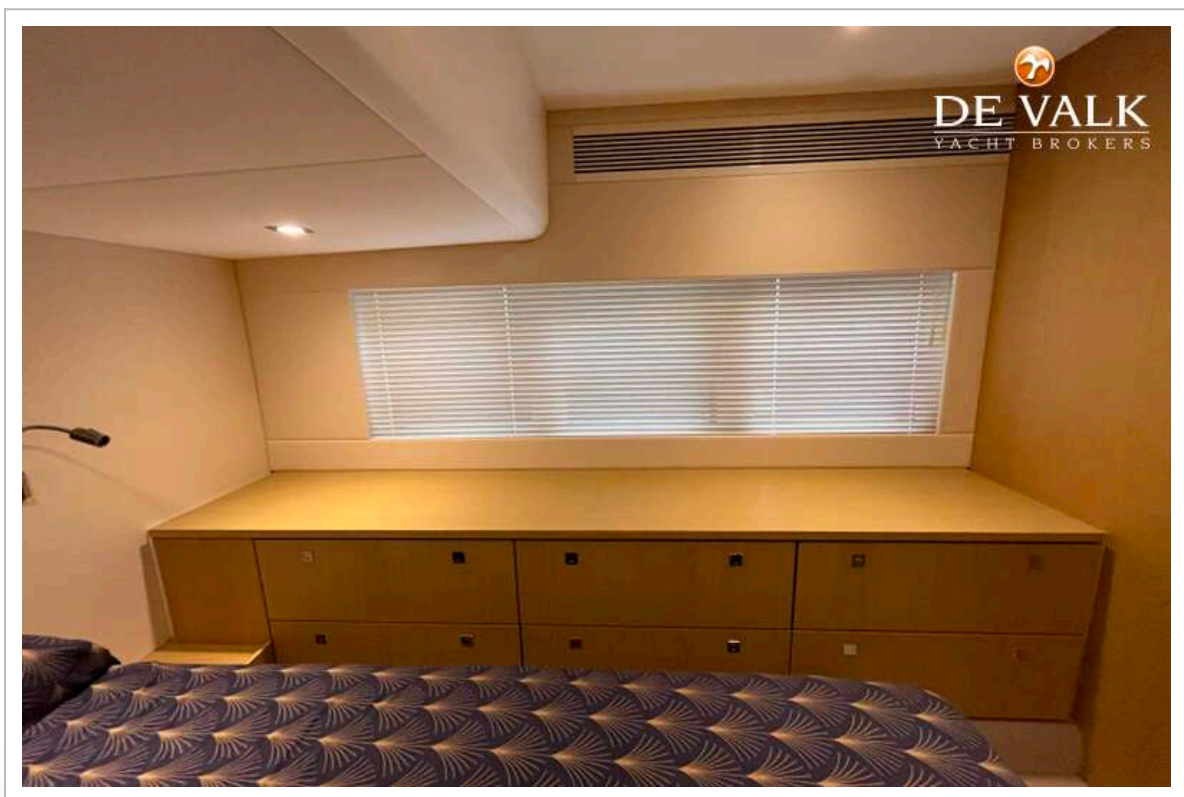
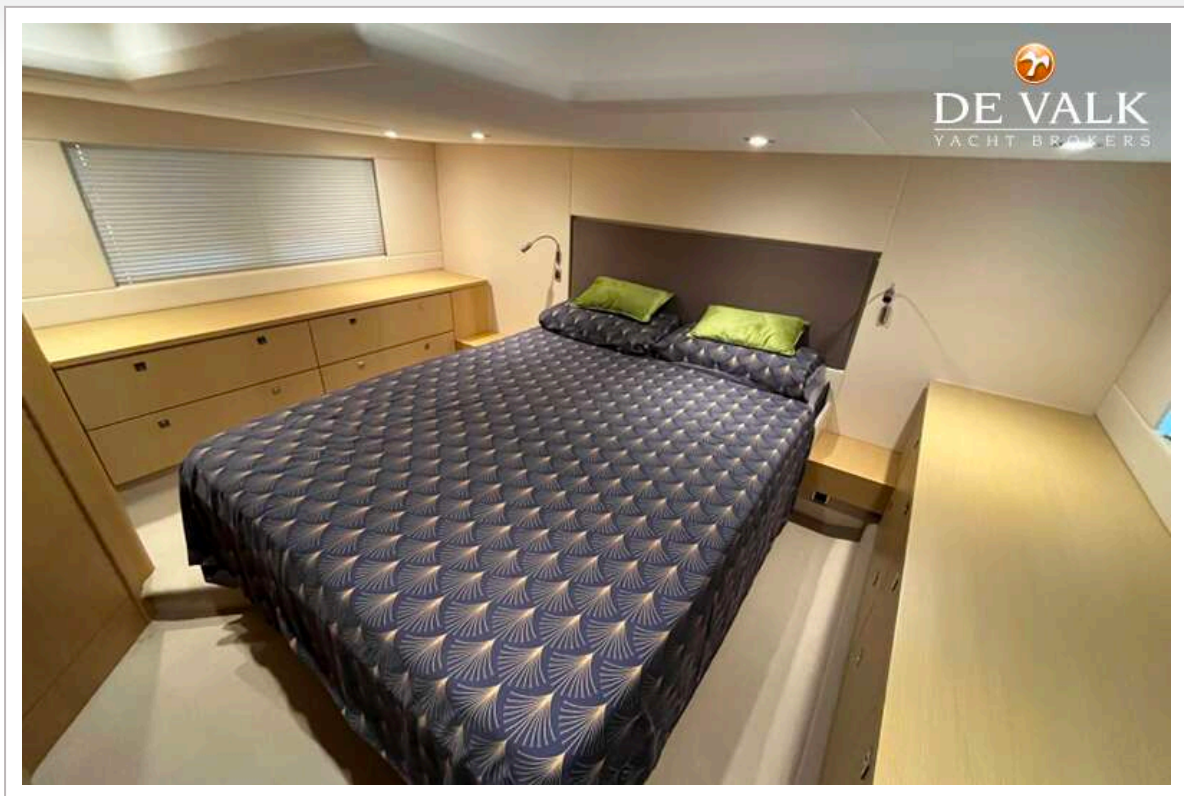
FAIRLINE TARGA 48



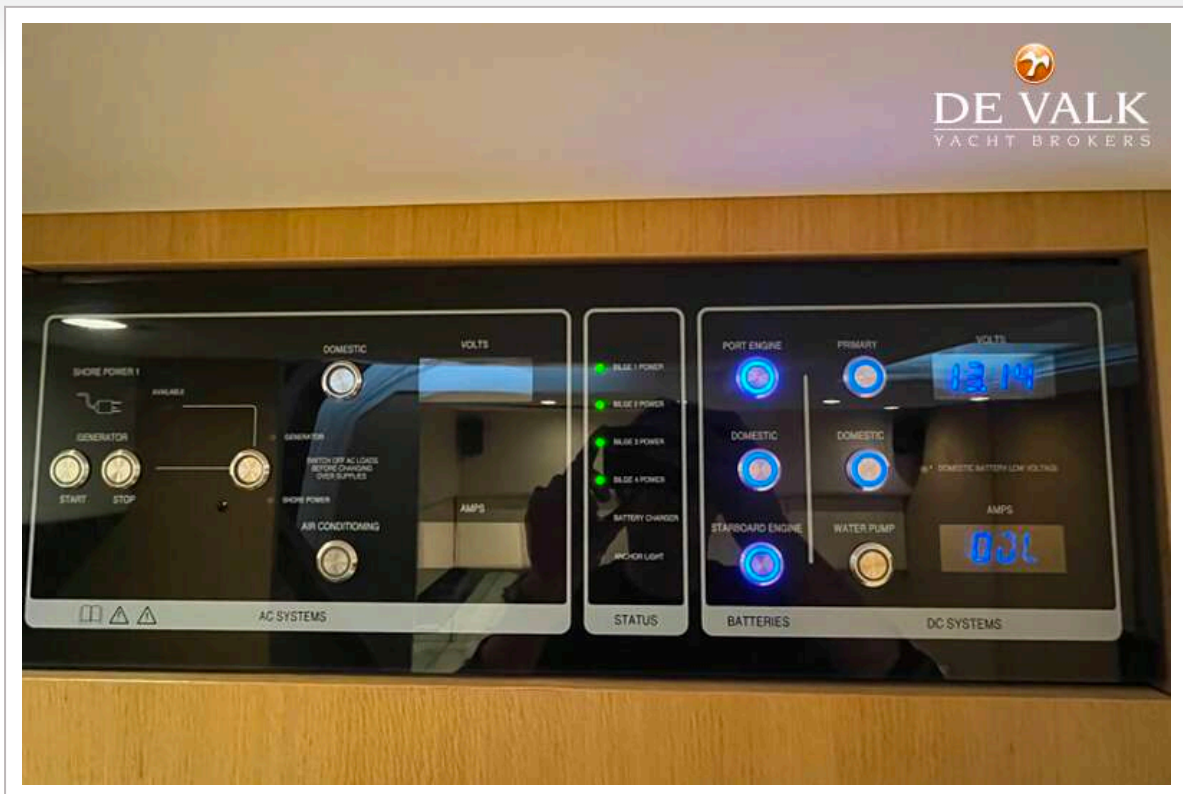
FAIRLINE TARGA 48



FAIRLINE TARGA 48



FAIRLINE TARGA 48



FAIRLINE TARGA 48

