



DE VALK

YACHT BROKERS



BENETEAU OCEANIS 34



DE VALK
YACHT BROKERS

BENETEAU OCEANIS 34

BROKER'S COMMENTS

This Beneteau Oceanis 34 with two cabins is a versatile and well-designed cruising yacht, perfect for couples or small families seeking comfort and performance on the water. The spacious cockpit with a user-friendly layout, is ideal for both relaxing at anchor and easy single-handed handling under sail. Below deck, a cozy saloon, and two cabins, offering plenty of storage and living space for extended trips. Known for its balanced sailing performance and solid construction, the Oceanis 34 is a fantastic choice for those looking to explore coastal waters or embark on longer adventures.

Maarten de Kroon

SPECIFICATIONS

Dimensions	10.34 x 3.66 x 1.85 (m)	Builder	Beneteau
Built	2011	Cabins	2
Material	GRP	Berths	6
Engine(s)	1 x Yanmar 3YM30 diesel	Hp/Kw	29.00 (hp), 21.34 (kw)
Asking price	£ 57.000 (VAT Paid)	Lying	Singapore

CONTACT

Sales office	De Valk Asia	Telephone	+65 826 679 95
Address		E-mail	asia@devalk.nl
	AS		

DISCLAIMER

These particulars are given in good faith as supplied but cannot be guaranteed.



BENETEAU OCEANIS 34

GENERAL

Model	BENETEAU OCEANIS 34
Type	sailing yacht
LOA (m)	10,34
LWL (m)	9,35
Beam (m)	3,66
Draft (m)	1,85
Headroom (m)	1,90
Year built	2011
Builder	Beneteau
Country	France
Designer	Finot-Conq & Associates
Displacement (t)	5,7
Ballast (tonnes)	cast iron
CE norm	A
Hull material	GRP
Hull colour	white
Hull shape	round-bilged
Keel type	fin keel with bulb
Superstructure material	GRP
Deck material	GRP
Deck finish	non-skid moulded in
Superstructure deck finish	non-skid moulded in
Cockpit deck finish	non-skid moulded in
Antifouling (year)	2024
Window frame	aluminium
Window material	polycarbonate
Deckhatch	3
Portholes	2
Fuel tank (litre)	polyethylene
Fuel tank 2 (litre)	129



Level indicator (fuel tank)	yes
Freshwater tank (litre)	polyethylene 314
Level indicator (freshwater)	yes
Blackwater tank (litre)	50
Wheel steering	cable steering
Emergency tiller	yes

ACCOMMODATION

Cabins	2
Berths	6
Interior	mahogany
Floor	wood
Saloon	yes
Headroom saloon (m)	2m
Air-conditioning	reverse cycle airco 220v, Cruisair
Chart table	yes
Aft Cabin	yes
Dinette	yes
Galley	yes
Countertop	Duropal
Sink	stainless steel Double
Cooker	calor gas 2 burners
Oven	Calor gas, gimbaled
Gas alarm	Carbon monoxide alarm
Fridge	Vitrifrigo 12v
Hot water system	220V + engine
Water pressure system	electrical
Manual and/or foot pump	Seawater
Kettle	+ cooking pots
Hot water tap	yes
Crockery	Cutlery, drinkware



Owners cabin	double bed
Bed length (m)	2
Wardrobe	hanging and shelves
Bathroom	separate
Toilet	separate
Toilet system	electric Needs service
Wash basin	in the bathroom
Shower	separate
Guest cabin 1	double bed
Bed length (m)	2
Wardrobe	hanging and shelves
Extra info	BBQ (Magma, gas)

MACHINERY

No of engines	1
Make	Yanmar
Type	3YM30
HP	29
kW	21.34
Fuel	diesel
Year installed	2011
Maximum speed (kn)	8,5
Cruising speed (kn)	7
Consumption (l/hr)	2
Engine hours	246
Engine cooling system	freshwater heat exchanger
Drive	shaft
Shaft seal	2020, PSS dripless shaft seal
Engine controls	bowden cable
Gearbox	mechanical Kanzaki KM2P-1
Propeller type	folding Flexofold



BENETEAU OCEANIS 34

Propeller blades	3
Propeller shaft material	stainless steel
Shaft lubrication	water
Manual bilge pump	yes
Electric bilge pump	yes
Start battery	2021, Trojan AGM
Service battery	2024, 2x 6V Trojan AGM 200 Ah
Solar panel	Dokio 100W + Victron MPPT charger 75 / 15 (Bluetooth)
Shorepower	with cable 1x general, 1x aircon
Extra info	New seacocks 2018
Extra info	Alternator Hitachi 80A

NAVIGATION

Compass	Plastimo
Depth sounder/log	yes
Windset	yes
VHF	Simrad RS25
VHF handheld	Icom IC-M25
Autopilot	Simrad AC 42, broken
Radar	Simrad 4G + spare cable
Radar/GPS/plotter	Simrad NSS8, broken
AIS transponder	NATS 400
EPIRB	G Fix Pro 406
Navigation lights	yes
Extra info	Torches, flares, paper charts, 2x first aid kit

EQUIPMENT

Bimini	yes
Sun awning	yes
Cockpit table	yes
Boarding ladder	stainless steel



BENETEAU OCEANIS 34

Deck shower	yes
Anchor	Rocna
Anchor chain	8mm
Anchor 2	CQR Plough
Anchor chain	Chain and wrap
Windlass	electrical Quick
Capstan	yes
Dinghy	Seaco 240
Outboard	Tohatsu 5 hp
Outboard support	yes
Sea railing	wire
Grab rail (superstructure)	teak
Lifejackets	6x
Lifebuoy	2x ring
Danbuoy	yes
Horn	air pressure
Radar reflector	yes
Fenders	yes
Mooring lines	yes
Spare parts	Extensive
Tools	Extensive
Radio-cd player	yes
Cockpit speakers	yes
Speakers in salon	yes
Fire extinguisher	Buckets/Blanket
Extra info	Fishing rod, windscoop
Extra info	Deck cushions, crewlift 40 Bosuns chair

RIGGING

Rigging	fractional
Standing rigging	wire 2011, checked 2024



Brand mast	Z-Spar Z Diffusion
Material mast	aluminium
Spreaders	2 x 2
Mainsail	Dacron 2019 + spare main
Mainsail cover	Sunbrella lazy bag
Genoa	Dacron 2019 + spare genoa
Genoa furler	Profurl
A-symmetric spi	2016
Reefing System	slabreefing
Backstay adjuster	mechanical
Boomvang	gasspring
Primary sheet winch	2x Harken 40 ST
Halyard winches	2x Harken 35 ST
Winchcovers	+ 3 winch handles



BENETEAU OCEANIS 34



BENETEAU OCEANIS 34



BENETEAU OCEANIS 34



BENETEAU OCEANIS 34



BENETEAU OCEANIS 34



BENETEAU OCEANIS 34





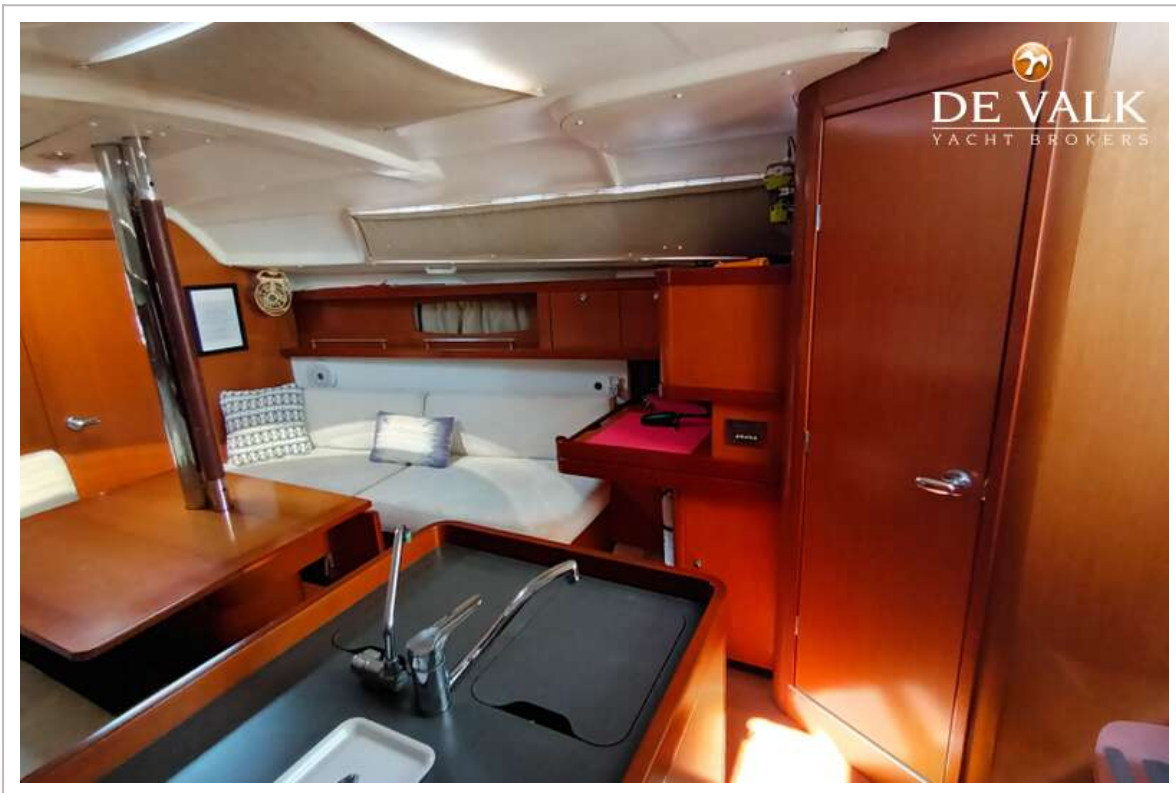
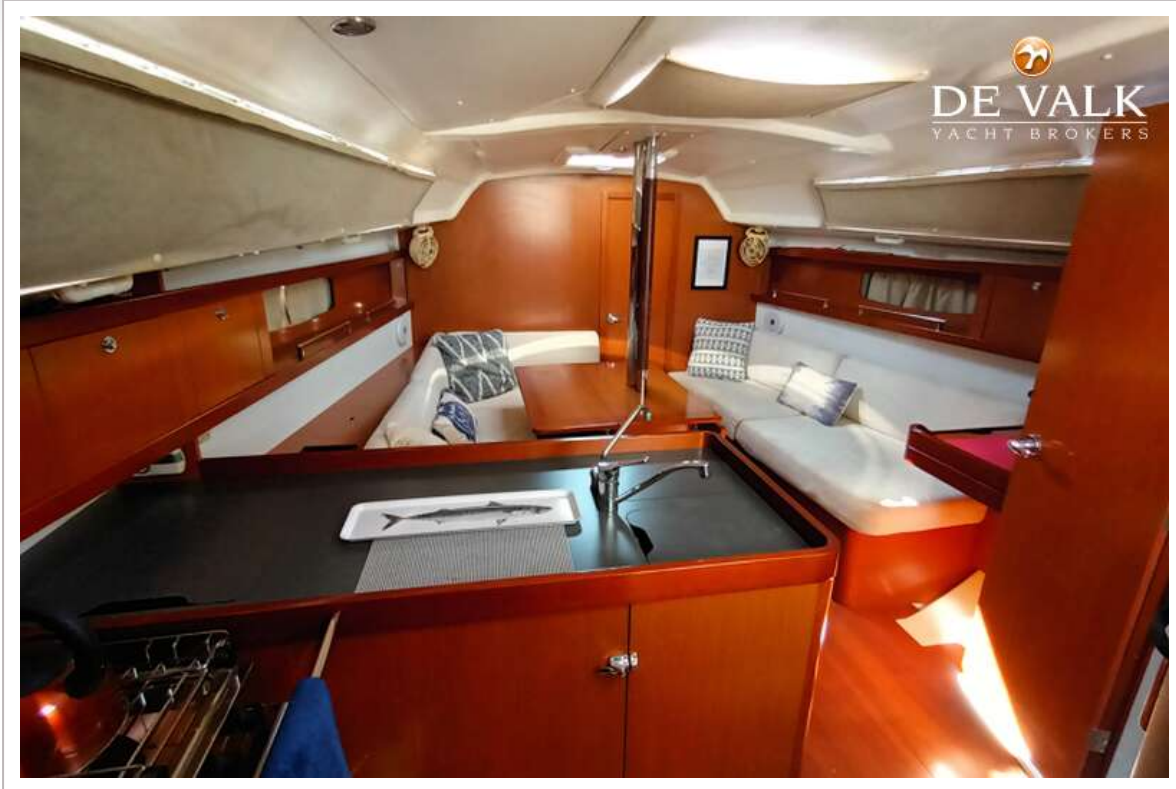
BENETEAU OCEANIS 34



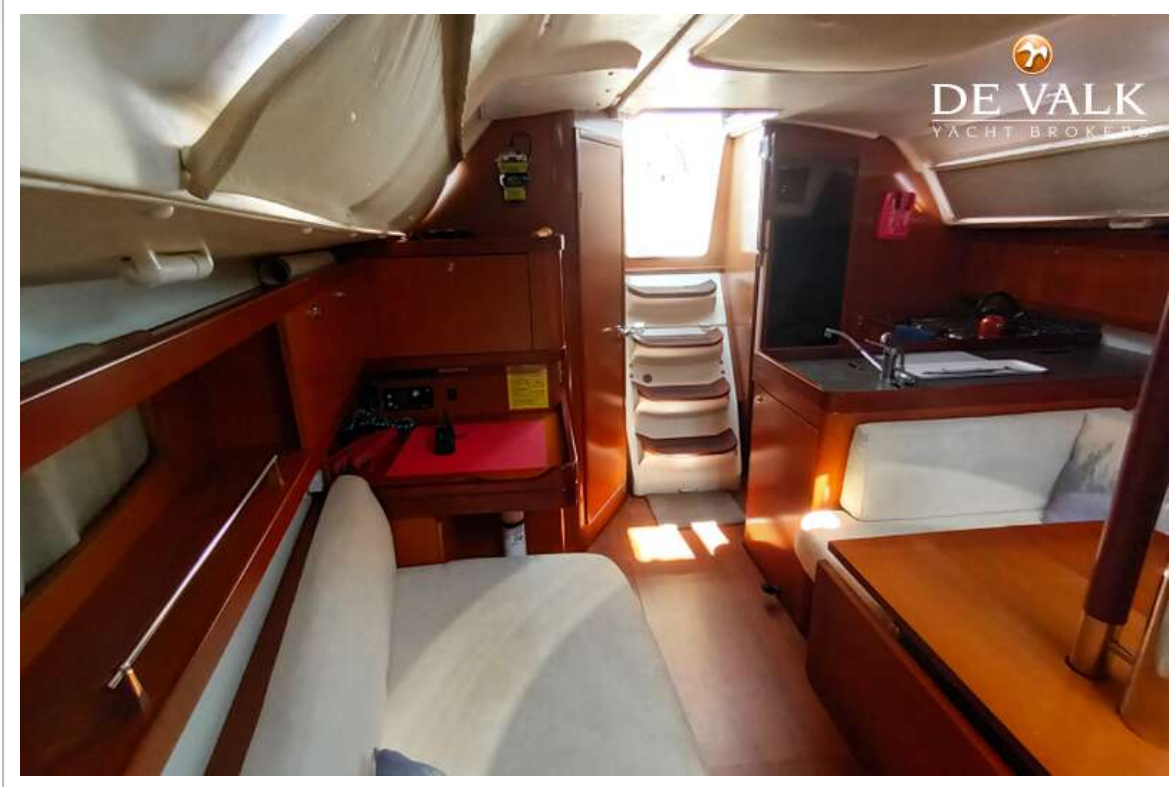
BENETEAU OCEANIS 34



BENETEAU OCEANIS 34



BENETEAU OCEANIS 34



BENETEAU OCEANIS 34



BENETEAU OCEANIS 34



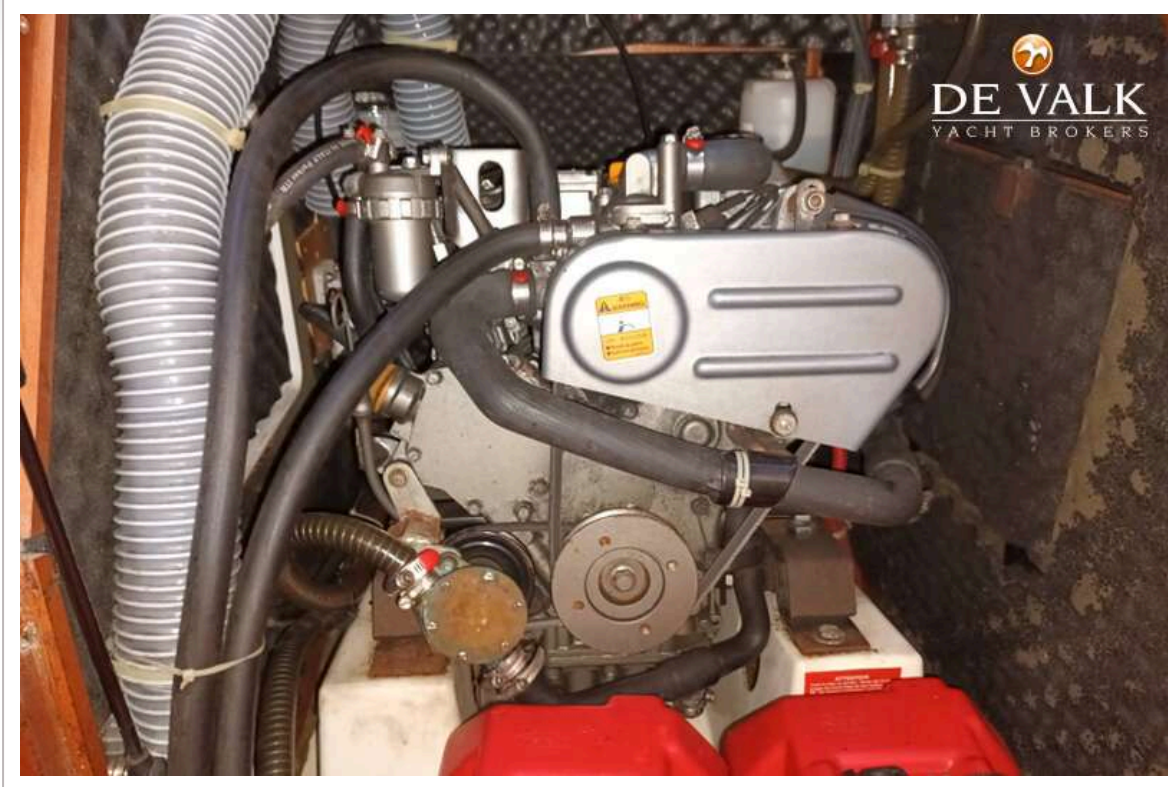
BENETEAU OCEANIS 34



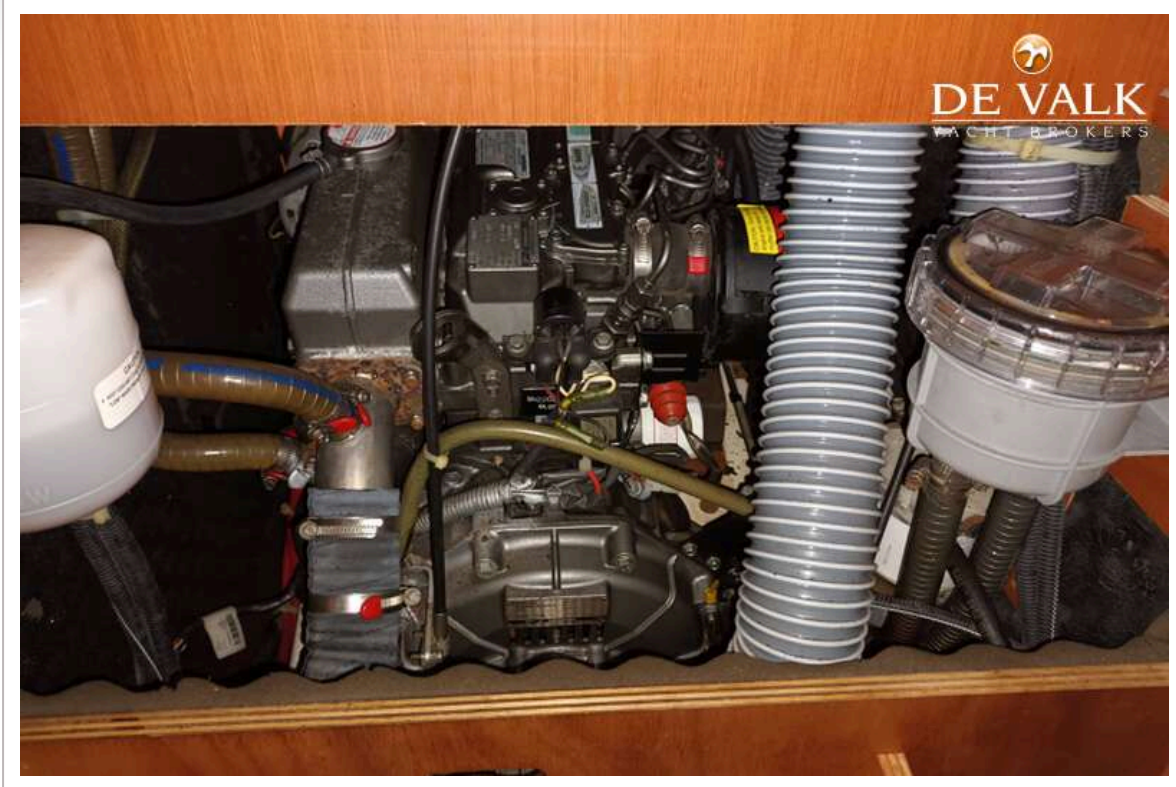
BENETEAU OCEANIS 34



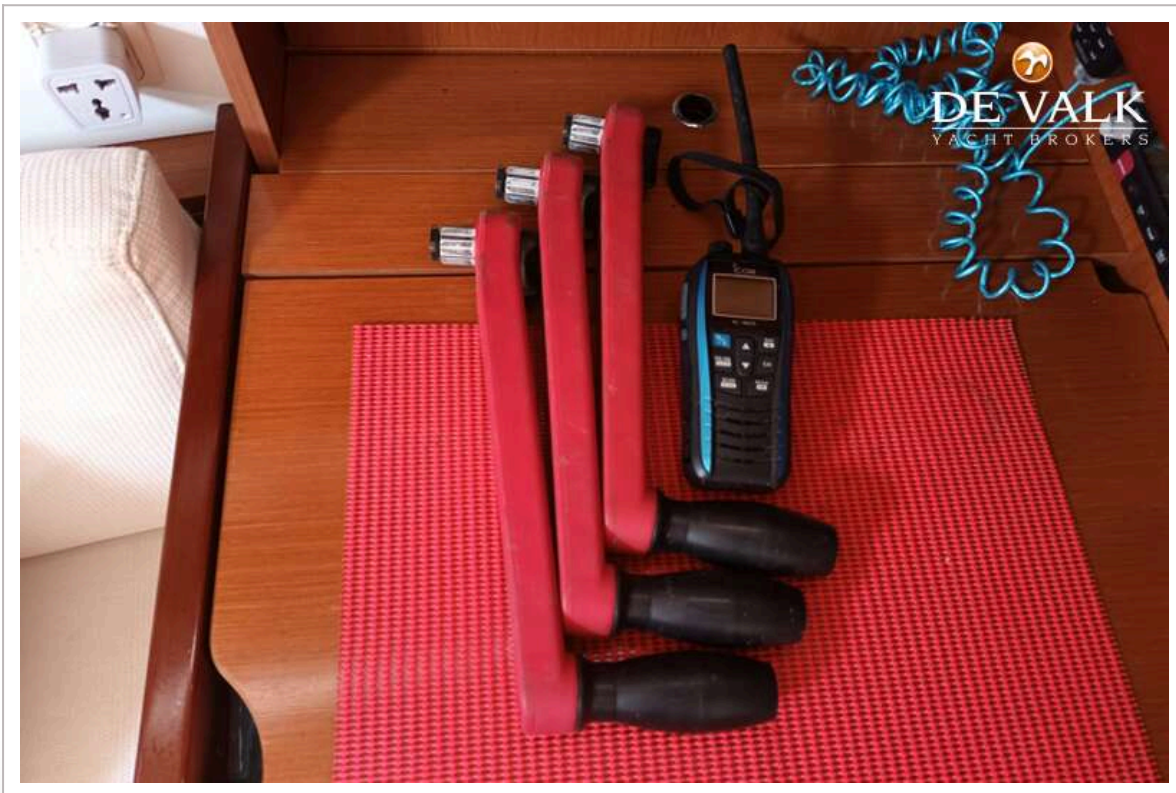
BENETEAU OCEANIS 34



BENETEAU OCEANIS 34



BENETEAU OCEANIS 34



BENETEAU OCEANIS 34

