



DE VALK
YACHT BROKERS



CLIPPER 40 HERITAGE TRAWLER



DE VALK
YACHT BROKERS

CLIPPER 40 HERITAGE TRAWLER

BROKER'S COMMENTS

The Clipper 40 Heritage is a "Europe" styled trawler, known for its classic lines. The semi-displacement hull, excellent range and economy, make the Clipper 40 Trawler ideal for long-distance and coastal cruising. Key features typically include a solid strong fiberglass hull, a single-engine, economical diesel propulsion system, a bow and stern thruster for easy manoeuvrability, covered walk-around side decks, a large flybridge, and comfortable two cabin accommodation. All in a beautiful like new condition and simply superbly maintained. Delivery to Northern Europe is possible (max. € 30.000).

Willem Koopmans

SPECIFICATIONS

| | | | |
|---------------------|-----------------------------------|----------------|--|
| Dimensions | 13.68 x 4.03 x 1.20 (m) | Builder | Ningbo Fu Hai Glass F.R.P. Boat Man. Co. |
| Built | 2007 | Cabins | 2 |
| Material | GRP | Berths | 6 |
| Engine(s) | 1 x Cummins Marine QSB 5.9 diesel | Hp/Kw | 270.00 (hp), 198.72 (kw) |
| Asking price | € 248.450 (VAT Paid) | Lying | contact sales office |

CONTACT

| | | | |
|---------------------|---|------------------|-----------------------|
| Sales office | De Valk Costa Blanca | Telephone | +34 96 50 21 569 |
| Address | Costa Blanca Region 03730 Javea Alicante ES | E-mail | costablanca@devalk.nl |

DISCLAIMER

These particulars are given in good faith as supplied but cannot be guaranteed.



CLIPPER 40 HERITAGE TRAWLER

GENERAL

| | |
|-----------------------------------|--|
| Model | CLIPPER 40 HERITAGE TRAWLER |
| Type | motor yacht |
| LOA (m) | 13,68 |
| LWL (m) | 11,70 |
| Beam (m) | 4,03 |
| Draft (m) | 1,20 |
| Air draft (m) | 8,15 |
| Air draft min (m) | 4,10 |
| Headroom (m) | 2,10 |
| Year built | 2007 |
| Builder | Ningbo Fu Hai Glass F.R.P. Boat Man. Co. |
| Country | China |
| Displacement (t) | 12,5 |
| CE norm | B |
| Hull material | GRP |
| Hull colour | off-white |
| Hull shape | V-shaped hull |
| Superstructure material | GRP |
| Rubbing strake | yes |
| Deck material | GRP |
| Deck finish | teak |
| Superstructure deck finish | non-skid paint |
| Cockpit deck finish | teak |
| Antifouling (year) | 2024 |
| Dorades | yes |
| Window frame | aluminium |
| Window material | tempered glass |
| Flybridge | yes |
| Radar arch | collapsible |
| Fuel tank (litre) | 560 |



CLIPPER 40 HERITAGE TRAWLER

| | |
|------------------------------|--------------------|
| Fuel tank 2 (litre) | 560 |
| Level indicator (fuel tank) | yes |
| Freshwater tank (litre) | 935 |
| Level indicator (freshwater) | yes |
| Blackwater tank (litre) | 85 |
| Wheel steering | yes |
| Inside helm position | yes |
| Flybridge helm position | yes |
| Emergency tiller | yes |
| Extra info | In excellent state |

ACCOMMODATION

| | |
|-------------------------------|--|
| Cabins | 2 |
| Berths | 6 |
| Interior | teak |
| Layout | Owner front/ guest cabin/ open floor layout galley/ living |
| Floor | teak and holly |
| Open cockpit | yes |
| Aft deck | yes |
| Pilot house | yes |
| Saloon | yes |
| Headroom saloon (m) | 2 |
| Heating | diesel ducted hot air Webasto Airtop 5000 |
| Air-conditioning | 16000 BTU, installed in 2023 |
| Navigation center | yes |
| Dinette to convert into berth | 2x 1p. berth |
| Sliding door to cockpit | yes |
| Galley | yes |
| Countertop | Duropal Grey |
| Sink | stainless steel |
| Cooker | calor gas Princess, 3 burner |



CLIPPER 40 HERITAGE TRAWLER

| | |
|-----------------------|---------------------------------------|
| Oven | Princess |
| Microwave | yes |
| Fridge | Dometic |
| Hot water system | 220V + engine Boiler |
| Water pressure system | electrical |
| Owners cabin | French bed Headroom 2,07 |
| Bed length (m) | 2 (x 1.60) |
| Toilet | shared Jabsco |
| Toilet system | electric |
| Wash basin | in the bathroom |
| Shower | shared |
| Guest cabin 1 | double bed Headroom 2,07 |
| Bed length (m) | 1.95 |
| Wardrobe | hanging and shelves |
| Bathroom | shared |
| Toilet | shared Jabsco |
| Toilet system | electric |
| Wash basin | in the bathroom |
| Shower | shared |
| Washing machine | Electrolux, Eco Valve, model EWC 1350 |
| Flybridge | yes |

MACHINERY

| | |
|--------------------|----------------|
| No of engines | 1 |
| Make | Cummins Marine |
| Type | QSB 5.9 |
| HP | 270 |
| kW | 198.72 |
| Fuel | diesel |
| Year installed | 2007 |
| Maximum speed (kn) | 10 |



CLIPPER 40 HERITAGE TRAWLER

| | |
|---------------------------------|----------------------------------|
| Cruising speed (kn) | 7 |
| Consumption (l/hr) | 6 |
| Range (nm) | 1200 |
| Engine hours | 1.650, approx. |
| Engine cooling system | freshwater heat exchanger |
| Drive | shaft |
| Engine controls | bowden cable |
| Gearbox | ZF-Marine |
| Bowthruster | electric Vetus |
| Sternthruster | electric Vetus |
| Exhaust | watercooled |
| Propeller type | fixed |
| Propeller blades | 4 |
| Propeller shaft material | stainless steel |
| Shaft lubrication | water |
| Manual bilge pump | 1x |
| Electric bilge pump | 3x |
| Electrical installation | 12/220 |
| Batteries | Varta |
| Start battery | 1x |
| Service battery | 3x |
| Bowthruster battery | 1x |
| Sternthruster battery | 2x |
| Battery charger | yes |
| Battery charger/inverter | Mass 12/2000/100 |
| Solar panel | 3x flexible |
| Shorepower | with cable |
| Insulation transformer | yes |
| Extra info | Sail on mast for extra stability |

NAVIGATION



CLIPPER 40 HERITAGE TRAWLER

| | |
|------------------------|---|
| Compass | yes |
| Compass on flybridge | yes |
| Electric compass | On autopilot |
| Depth sounder/log | Raymarine ST40, Bidata |
| Windset | Nasa Marine |
| VHF | Raymarine |
| Autopilot | Raymarine ST 6002 inside and on flybridge |
| Rudder angle indicator | On autopilot |
| Radar | Raymarine HD Colour |
| GPS | yes |
| Radar/GPS/plotter | Raymarine E 120W inside and on flybridge |
| Weather receiver | Lowe HF150 |
| Navtex | Nasa Navtex Pro Plus |
| AIS transponder | yes |
| EPIRB | Needs datacheck, battery |
| Navigation lights | yes |

EQUIPMENT

| | |
|------------------|-----------------|
| Fixed windscreen | yes |
| Bimini | yes |
| Cockpit cushions | yes |
| Cockpit table | yes |
| Cockpit chairs | 4x |
| Bathing platform | yes |
| Boarding ladder | stainless steel |
| Transom door | yes |
| Gangway | yes |
| Deck shower | yes |
| Anchor | yes |
| Anchor chain | Stainless steel |
| Anchor 2 | yes |



CLIPPER 40 HERITAGE TRAWLER

| | |
|-----------------------------|-------------------------------------|
| Anchor chain | Stainless steel |
| Windlass | electrical Vetus |
| Dinghy | E-Sea Rigid Inflatable Boat, 2.75 m |
| Outboard | Mercury Marine Cruiser 3.5 hp |
| Outboard support | yes |
| Sea railing | stainless steel |
| Railing side opening gates | Port and star board |
| Life raft | yes |
| Life raft (pers) | 6 |
| Last life raft survey | 2022 |
| Horn | yes |
| Fenders | yes |
| Mooring lines | yes |
| Spare parts | yes |
| TV | Samsung |
| Radio-cd player | JVC Bluetooth |
| Cockpit speakers | yes |
| Speakers in salon | Blaupunkt |
| Clock - barometer | Plastimo |
| Fire extinguisher | yes |
| Extinguisher in engine room | yes |



CLIPPER 40 HERITAGE TRAWLER



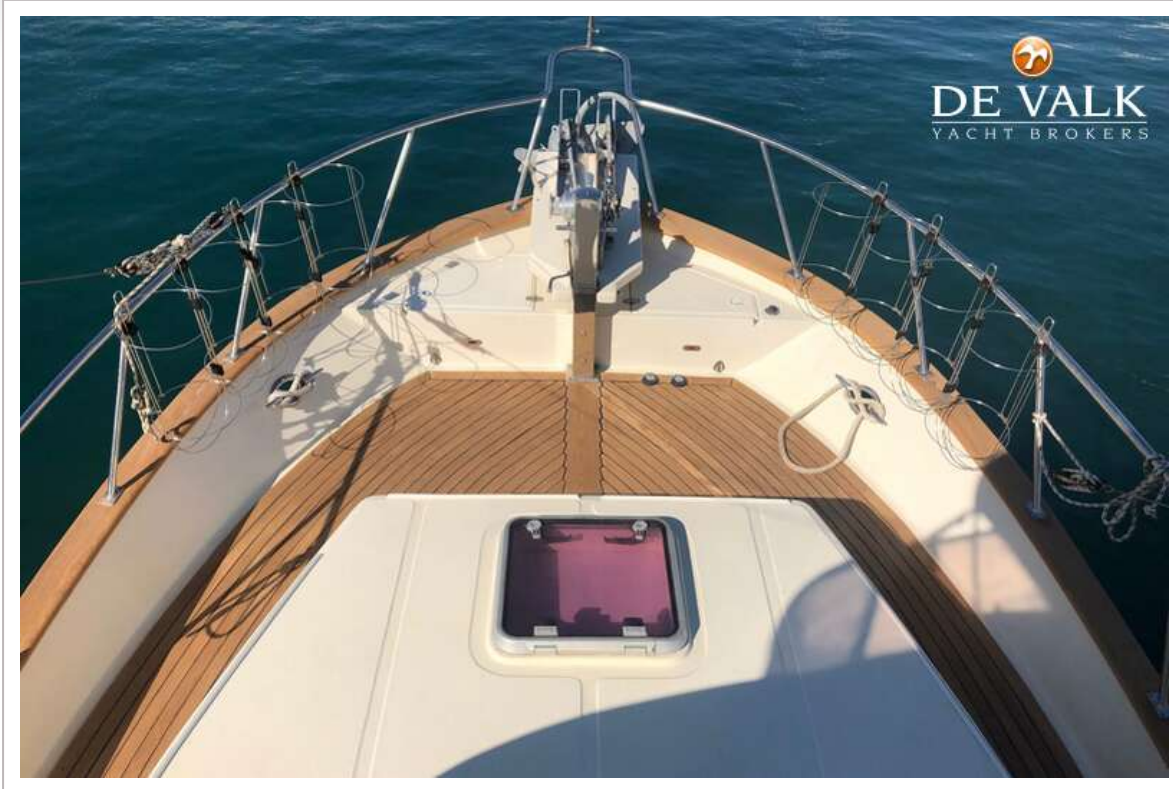
CLIPPER 40 HERITAGE TRAWLER



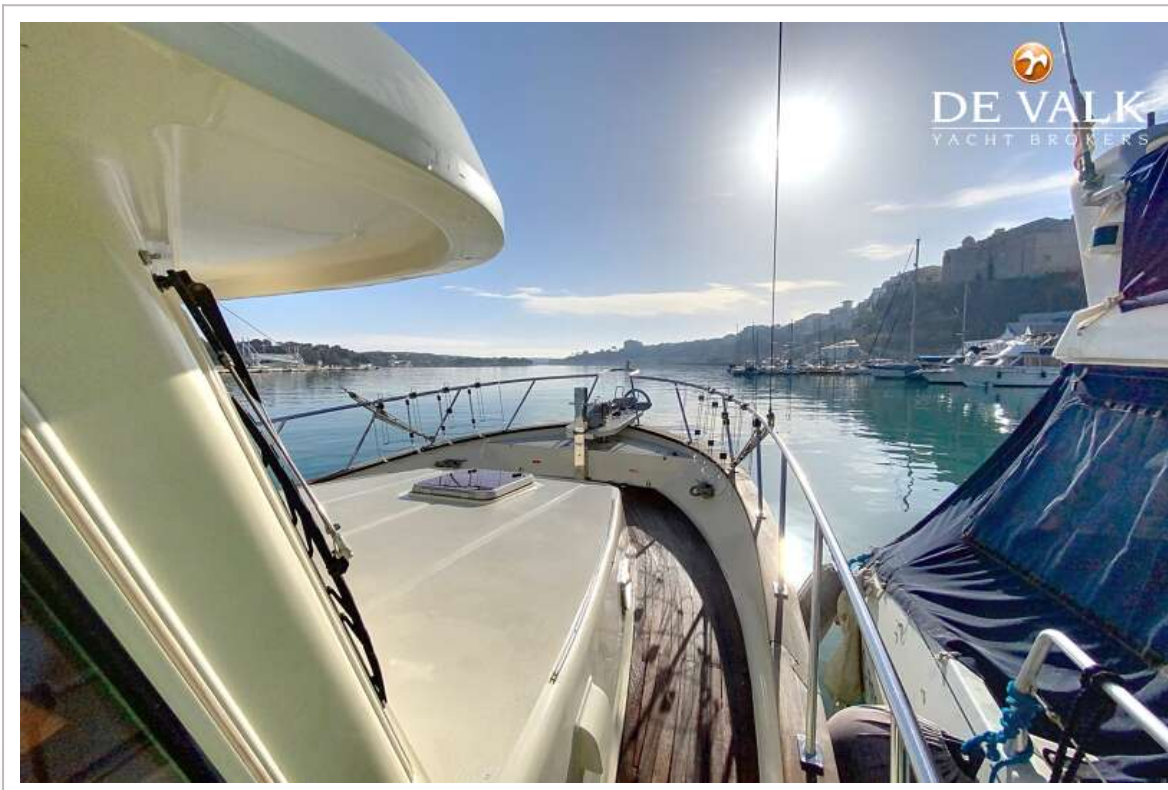
CLIPPER 40 HERITAGE TRAWLER



CLIPPER 40 HERITAGE TRAWLER



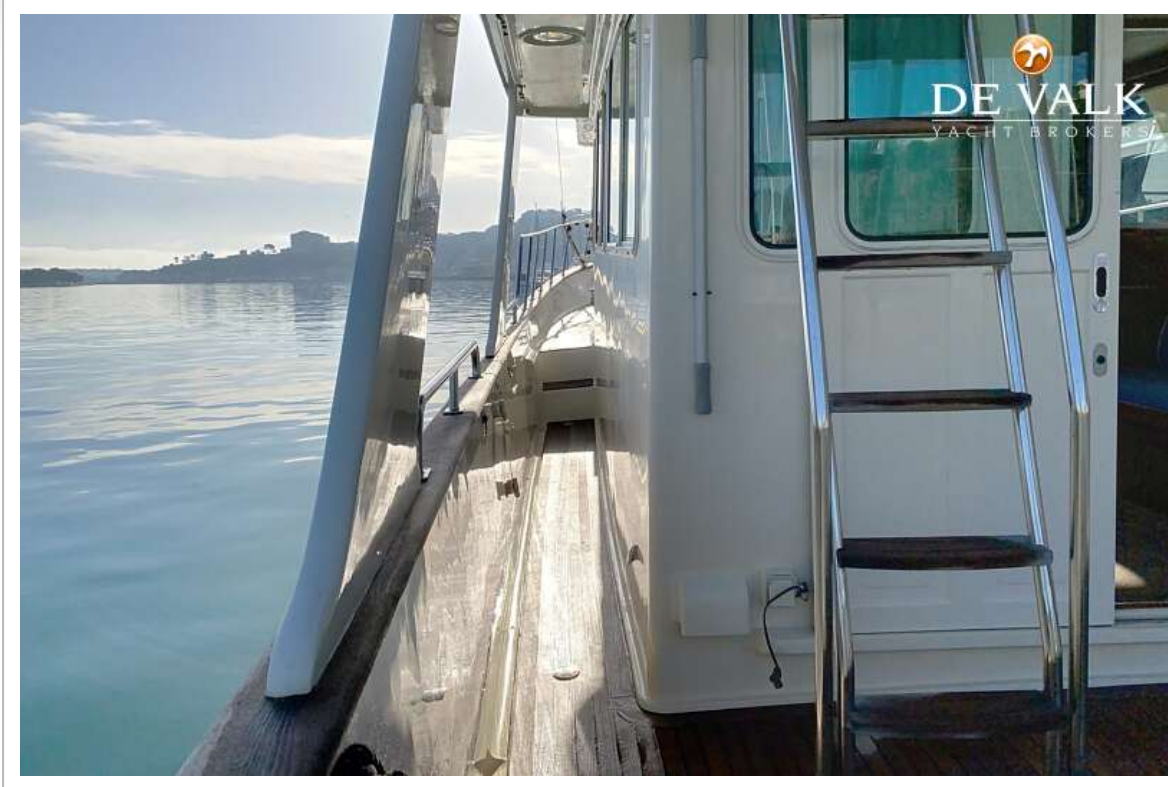
CLIPPER 40 HERITAGE TRAWLER



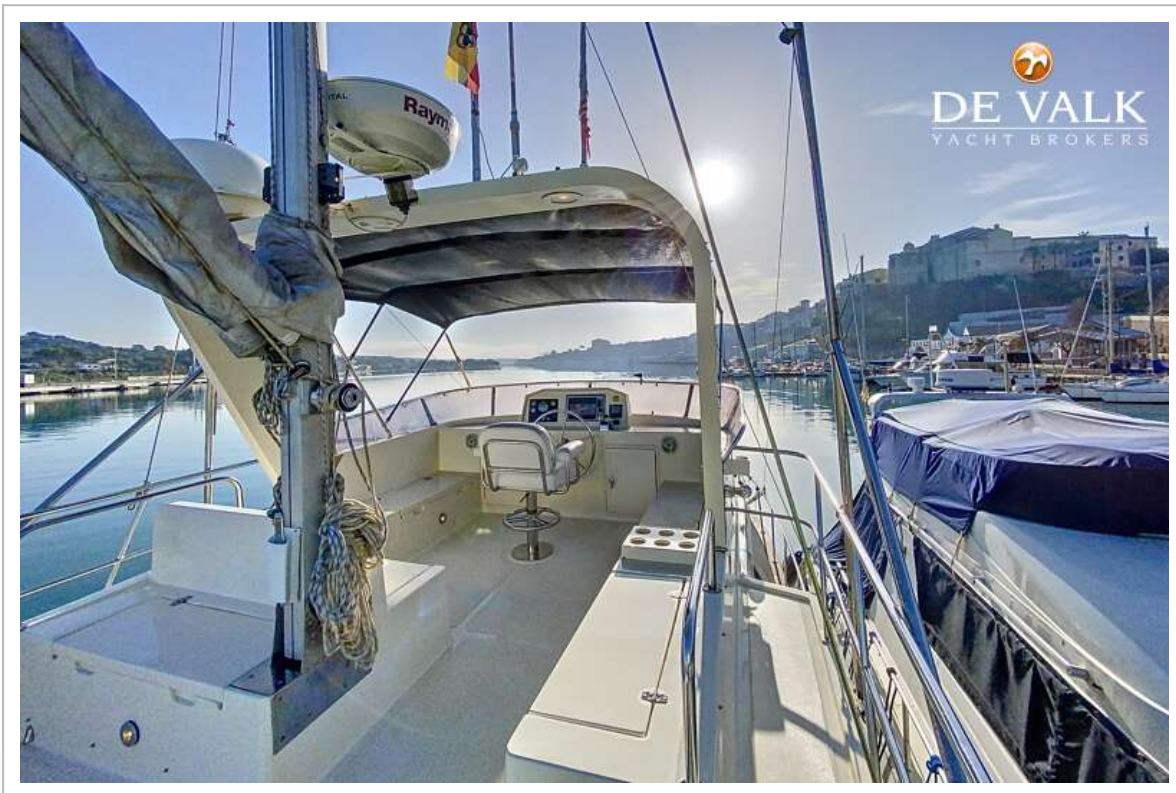
CLIPPER 40 HERITAGE TRAWLER



CLIPPER 40 HERITAGE TRAWLER



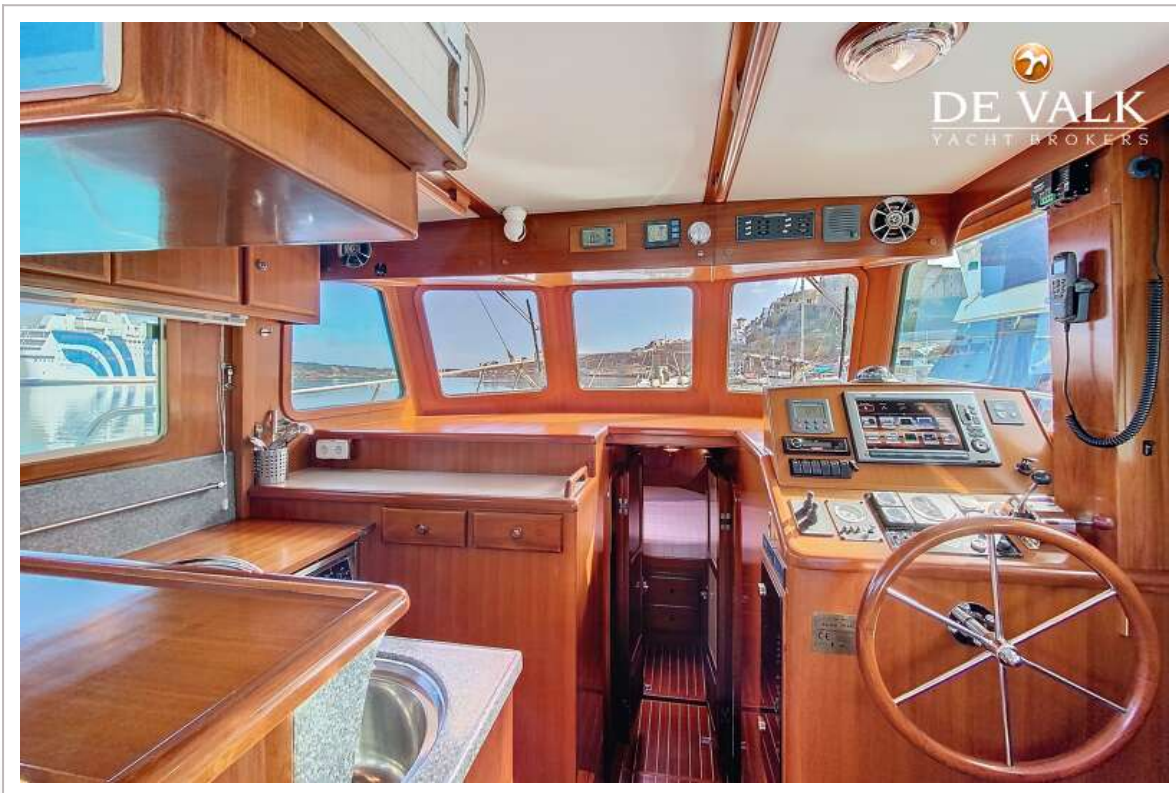
CLIPPER 40 HERITAGE TRAWLER



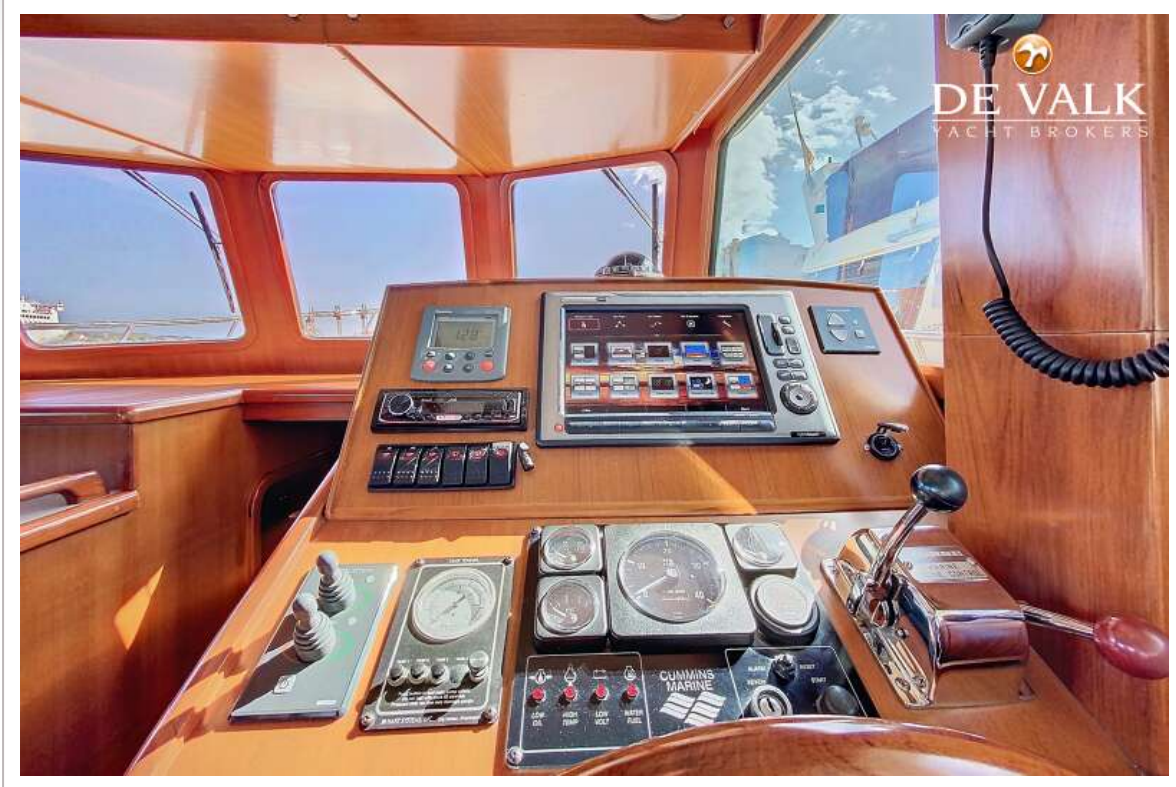
CLIPPER 40 HERITAGE TRAWLER



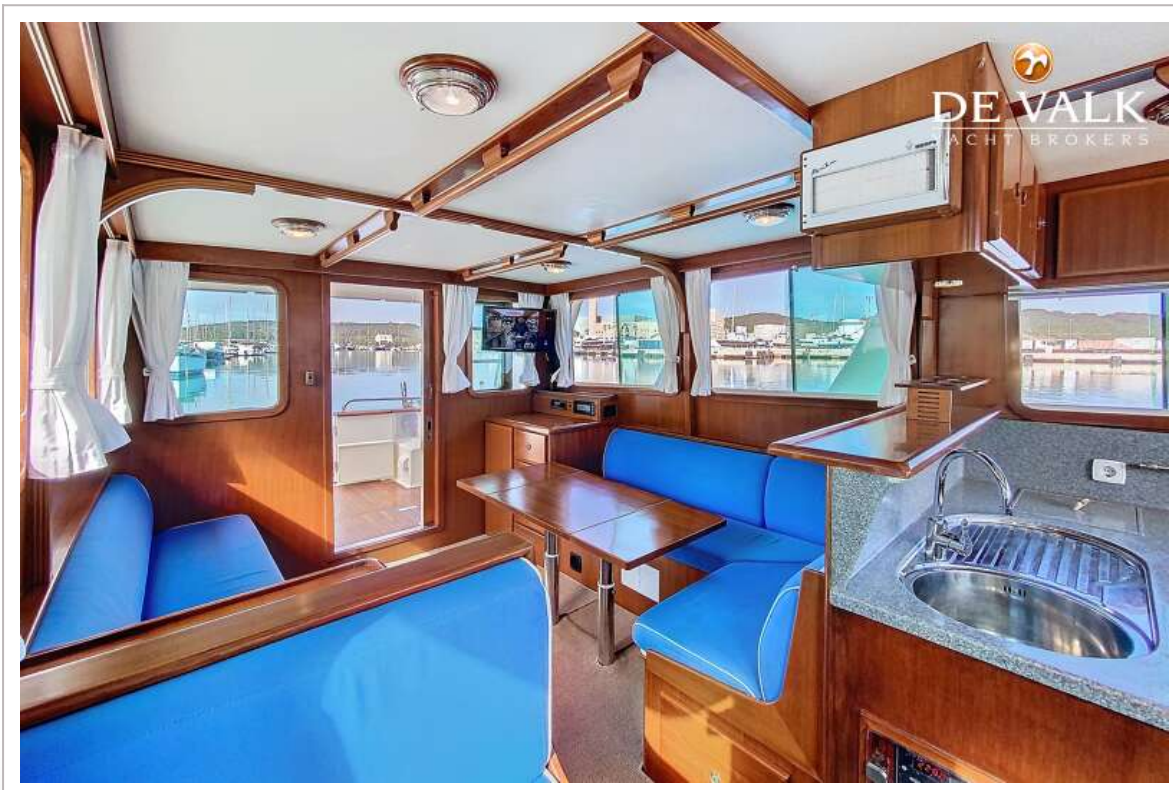
CLIPPER 40 HERITAGE TRAWLER



CLIPPER 40 HERITAGE TRAWLER



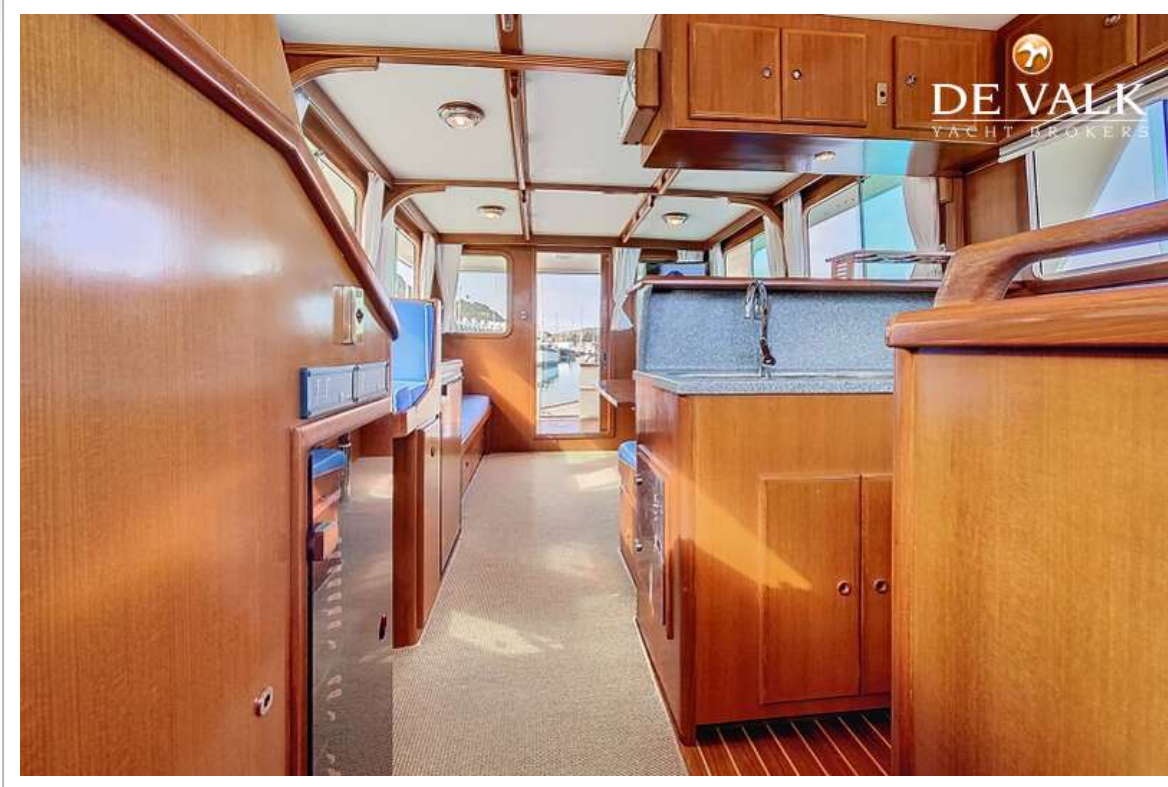
CLIPPER 40 HERITAGE TRAWLER



CLIPPER 40 HERITAGE TRAWLER



CLIPPER 40 HERITAGE TRAWLER



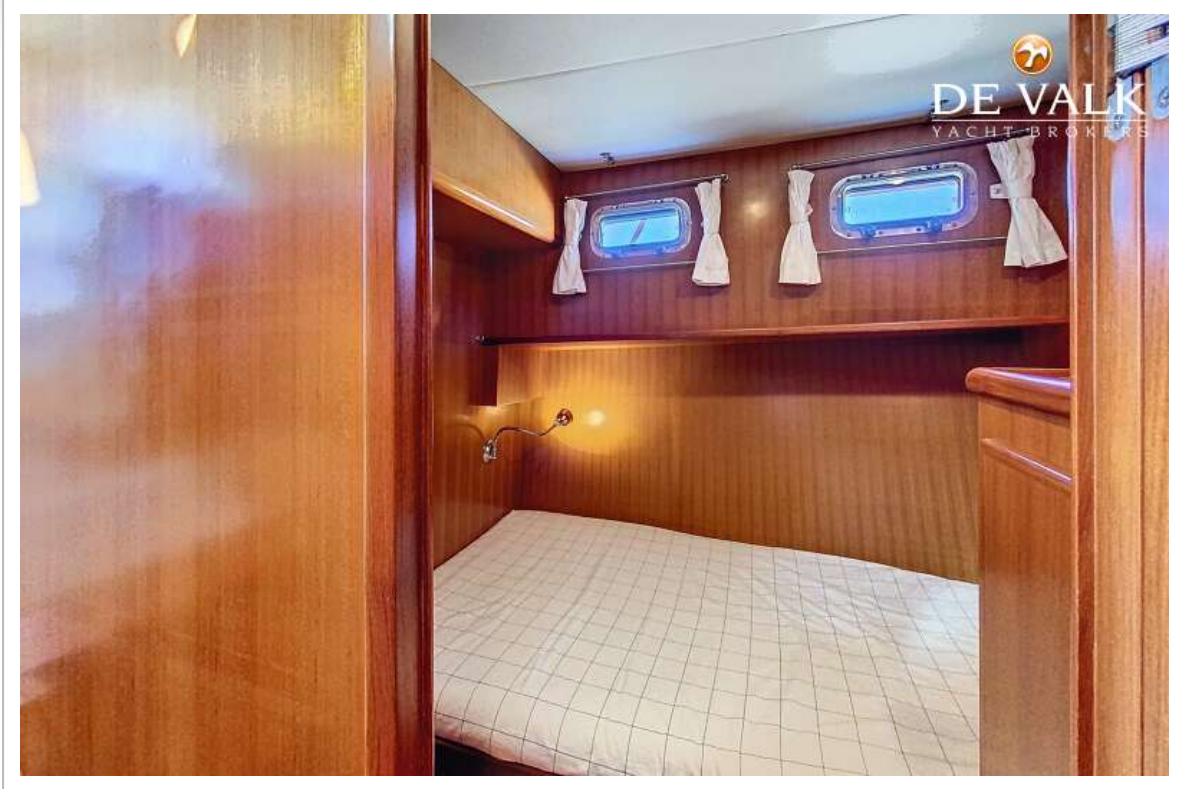
CLIPPER 40 HERITAGE TRAWLER



CLIPPER 40 HERITAGE TRAWLER



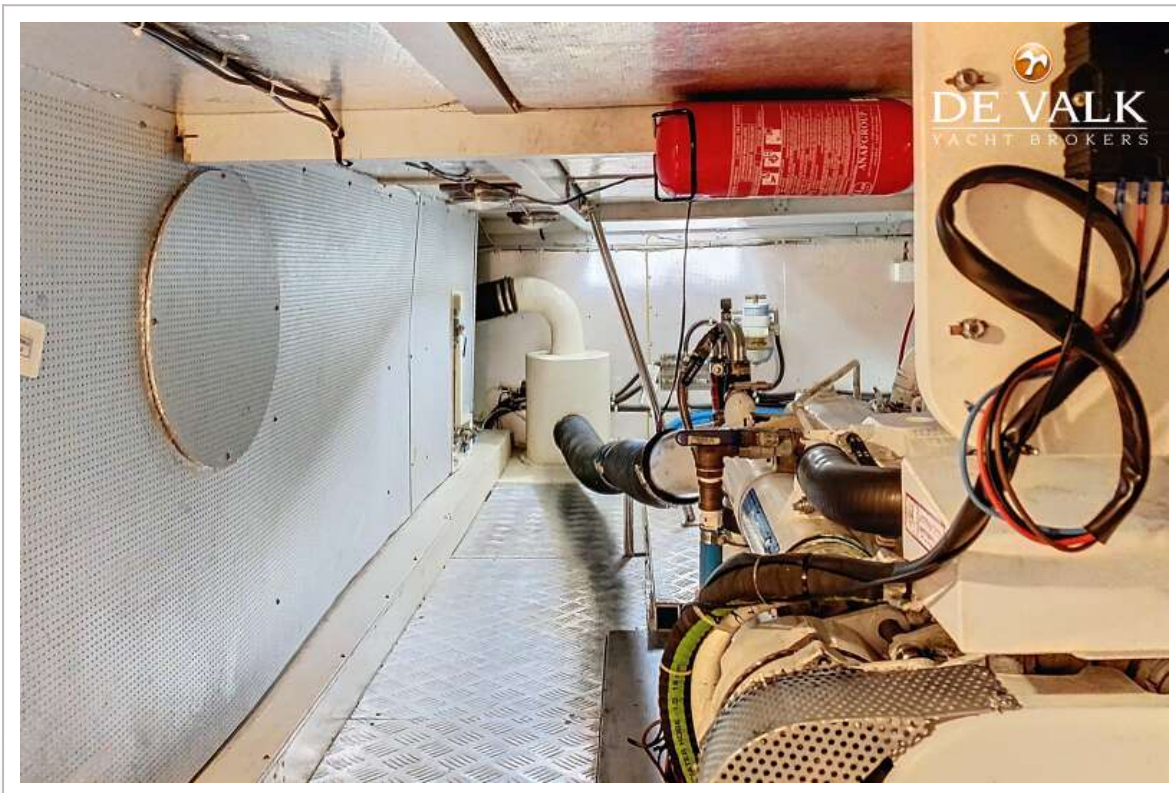
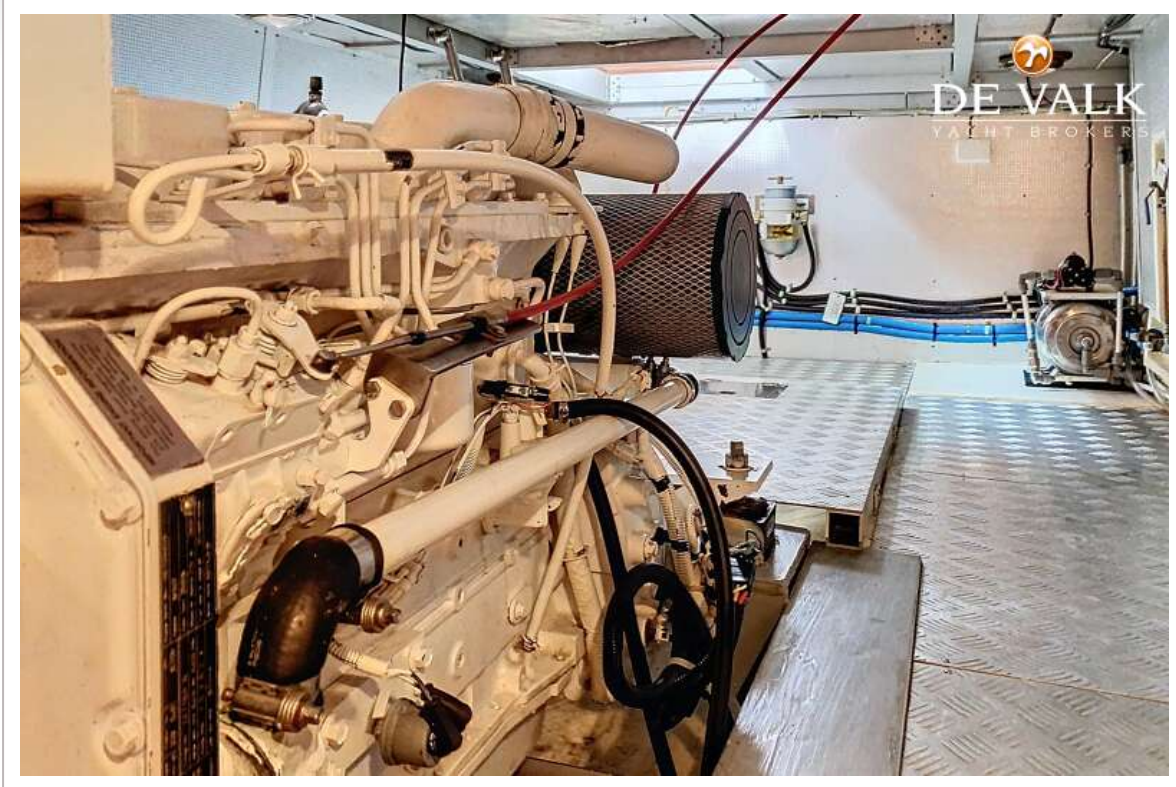
CLIPPER 40 HERITAGE TRAWLER



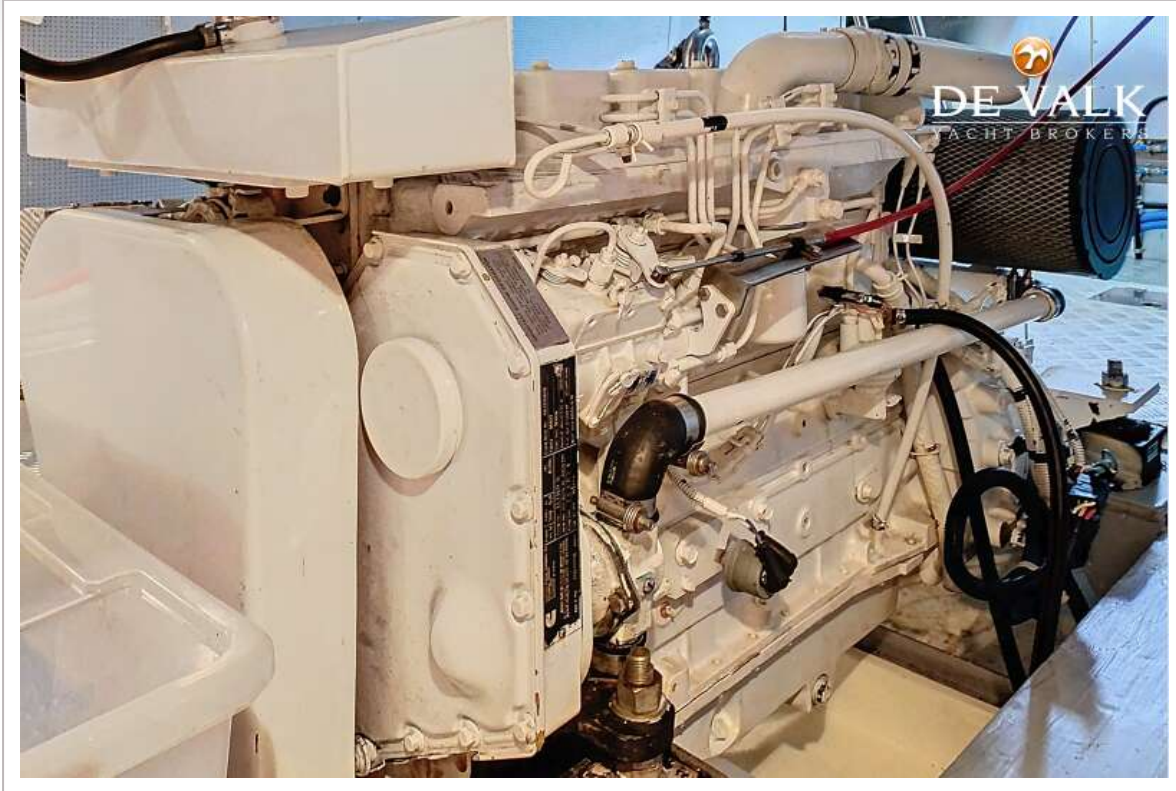
CLIPPER 40 HERITAGE TRAWLER



CLIPPER 40 HERITAGE TRAWLER



CLIPPER 40 HERITAGE TRAWLER



CLIPPER 40 HERITAGE TRAWLER



CLIPPER 40 HERITAGE TRAWLER

