



## LAGOON 450 F

# LAGOON 450 F

## BROKER'S COMMENTS

This 2016 Lagoon 450 F Owners Version is currently available for sale in Bali. A proven performer among cruising catamarans, the 450 F offers spacious comfort, elegant design, and outstanding blue-water capability. Lovingly maintained by a meticulous owner and used primarily for family cruising and benefits from continuous care and significant upgrades over the past years. She has many features like full aircon, solar panels, watermaker, all-new deck and cockpit cushions, new trampolines, a new sail bag and many more. Please contact our broker for making an appointment or any questions.

*Maarten de Kroon*

## SPECIFICATIONS

<b>Dimensions</b>	13.96 x 7.87 x 1.30 (m)	<b>Builder</b>	Lagoon
<b>Built</b>	2016	<b>Cabins</b>	3
<b>Material</b>	GRP	<b>Berths</b>	6
<b>Engine(s)</b>	2 x Yanmar 4JH5E diesel	<b>Hp/Kw</b>	2 x 49.00 (hp), 36.06 (kw)
<b>Asking price</b>	\$ 615.000 (VAT Not paid)	<b>Lying</b>	Indonesia

## CONTACT

<b>Sales office</b>	De Valk Asia	<b>Telephone</b>	+65 826 679 95
<b>Address</b>	Penang region Penang MY	<b>E-mail</b>	asia@devalk.nl

## DISCLAIMER

These particulars are given in good faith as supplied but cannot be guaranteed.



## GENERAL

Model	LAGOON 450 F
Type	catamaran sailing yacht
LOA (m)	13,96
Beam (m)	7,87
Draft (m)	1,30
Year built	2016
Builder	Lagoon
Country	France
Designer	Van Peteghem-Lauriot Prevost
Displacement (t)	15
Ballast (tonnes)	15
CE norm	A
Hull material	GRP
Hull colour	white
Hull shape	round-bilged
Superstructure material	GRP
Deck finish	non-skid moulded in
Superstructure deck finish	non-skid moulded in
Cockpit deck finish	teak
Antifouling (year)	2024
Window frame	aluminium
Deckhatch	yes
Portholes	yes
Flybridge	yes
Flybridge cockpit cover	yes
Fuel tank (litre)	2 tanks, total 1040 ltr
Level indicator (fuel tank)	yes
Freshwater tank (litre)	2 tanks 350 ltr
Level indicator (freshwater)	yes
Blackwater tank (litre)	yes



Blackwater tank extraction	deck extraction + uw line
Wheel steering	cable steering
Flybridge helm position	cable steering
Emergency tiller	yes

## ACCOMMODATION

Cabins	3
Berths	6
Interior	ash
Floor	wood
Saloon	yes
Headroom saloon (m)	2
Air-conditioning	reverse cycle airco Cruisair
Navigation center	yes
Chart table	yes
Dinette	yes
Sliding door to aft deck	yes
Galley	U-shape
Countertop	corian
Sink	stainless steel
Cooker	calor gas 3 burner
Oven	ENO
Microwave	LG
Fridge	Vitrifrigo
Freezer	yes
Hot water system	220V + engine
Water pressure system	electrical
Coffee maker	DeLonghi
Crockery	yes
Owners cabin	double bed
Bed length (m)	2



# LAGOON 450 F

Wardrobe	hanging/drawers/shelves
Bathroom	en suite
Toilet	en suite
Toilet system	electric
Wash basin	in the bathroom
Shower	en suite
Extra info	Owners version
Guest cabin 1	double bed
Bed length (m)	2
Wardrobe	hanging and shelves
Bathroom	en suite
Toilet	en suite
Toilet system	electric
Wash basin	in the bathroom
Shower	en suite
Guest cabin 2	double bed
Bed length (m)	2
Wardrobe	hanging and shelves
Bathroom	en suite
Toilet	en suite
Toilet system	electric
Wash basin	in the bathroom
Shower	en suite
Flybridge	yes

## MACHINERY

No of engines	2
Make	Yanmar
Type	4JH5E
HP	49
kW	36.06



<b>Fuel</b>	diesel
<b>Engine cooling system</b>	freshwater heat exchanger
<b>Drive</b>	sail-drive
<b>Saildrive seal</b>	yes
<b>Engine controls</b>	bowden cable
<b>Gearbox</b>	mechanical
<b>Propeller type</b>	folding
<b>Manual bilge pump</b>	yes
<b>Electric bilge pump</b>	yes
<b>Generator</b>	Cummins Onan 11MDKDN- 8214A 11 kW
<b>Running hours generator</b>	2773
<b>Start battery</b>	2x Varta 12v 100Ah
<b>Service battery</b>	6x Varta 12v 145Ah
<b>Generator battery</b>	Bosch 12v 95Ah
<b>Inverter</b>	Cristec 12v 200VA
<b>Battery charger/inverter</b>	Victron MultiPlus Compact
<b>Solar panel</b>	4x 100W, SK80D charger
<b>Shorepower</b>	with cable 2x
<b>Watermaker</b>	Dessalator Duo D100, 161 hours

## NAVIGATION

<b>Compass on flybridge</b>	Plastimo Offshore 95
<b>Multi control display</b>	B&G
<b>Depth sounder/log</b>	yes
<b>Windset</b>	yes
<b>VHF</b>	B&G V50
<b>Autopilot</b>	B&G AC42
<b>Rudder angle indicator</b>	yes
<b>Radar</b>	B&G 4G
<b>Radar/GPS/plotter</b>	B&G
<b>AIS transponder</b>	Simrad NAIS-400



Navigation lights	yes
-------------------	-----

## EQUIPMENT

Sprayhood	yes
Cockpit cover	yes
Cockpit cushions	yes
Cockpit table	yes
Bathing platform	yes
Boarding ladder	stainless steel
Transom door	yes
Deck shower	yes
Anchor	Rocna
Anchor chain	10mm
Windlass	electrical Quick
Windlass aft	electrical
Deck wash	yes
Dinghy	Highfield, alu floor
Outboard	Honda 20 HP
Davits	Stainless steel
Davits controls	manual
Sea railing	wire
Grab rail (superstructure)	stainless steel
Pushpit	yes
Life raft	container
Life raft (pers)	6
Lifejackets	yes
Lifebuoy	yes
Fenders	yes
Mooring lines	yes
Radio	Fusion MS-UD750
DVD player	Fusion MS-AV700i



<b>Surround Sound System</b>	Bose
<b>Sub-woofer</b>	yes
<b>Cockpit speakers</b>	And on flybridge
<b>Speakers in salon</b>	yes
<b>Fire extinguisher</b>	yes

## RIGGING

<b>Rigging</b>	fractional
<b>Standing rigging</b>	wire
<b>Brand mast</b>	Z-Spar
<b>Material mast</b>	aluminium
<b>Spreaders</b>	2 pairs
<b>Mainsail</b>	With Lazy Jacks
<b>Battcars</b>	yes
<b>Fully battened mainsail</b>	yes
<b>Genoa</b>	yes
<b>Genoa furler</b>	Facnor
<b>Reefing System</b>	slabreefing
<b>Primary sheet winch</b>	2x Harken 50 electric
<b>Genoa sheetwinches</b>	2x Harken 60 electric
<b>Multifunctional winches</b>	1x Harken electric for Davids
<b>Winchcovers</b>	yes
<b>Gennaker pole</b>	aluminium





# LAGOON 450 F



# LAGOON 450 F



# LAGOON 450 F

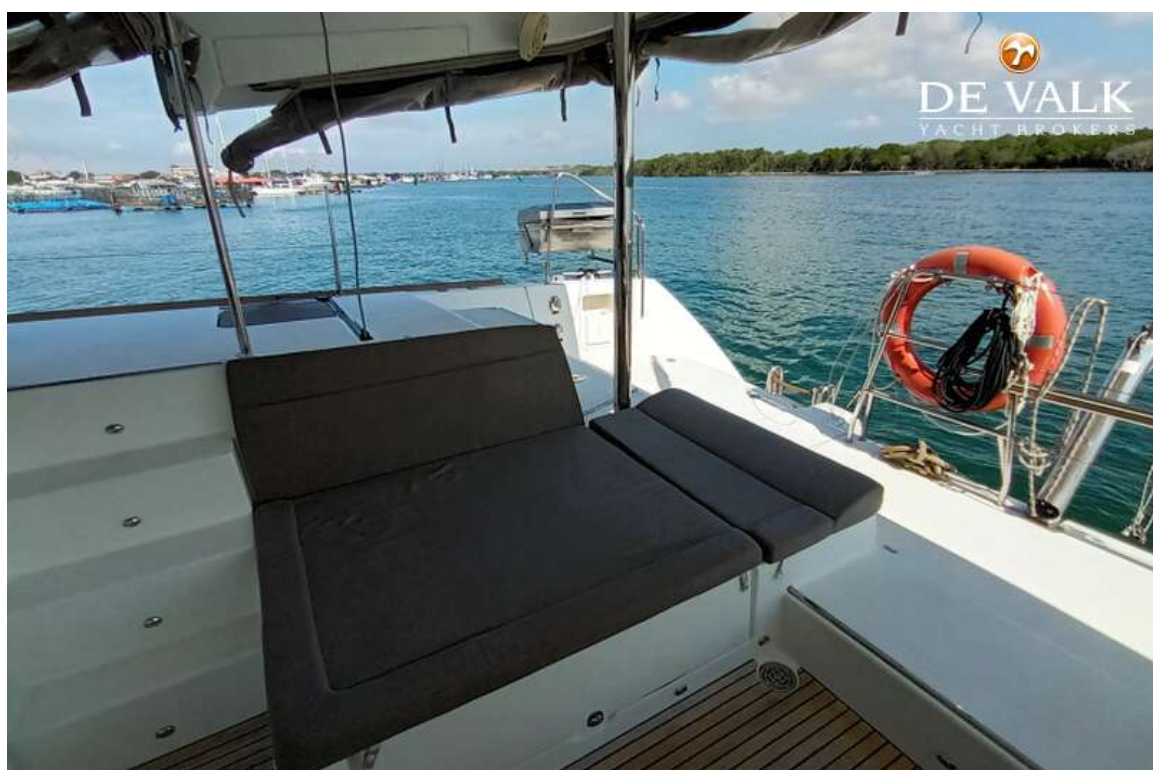




# LAGOON 450 F



# LAGOON 450 F





# LAGOON 450 F



# LAGOON 450 F





# LAGOON 450 F

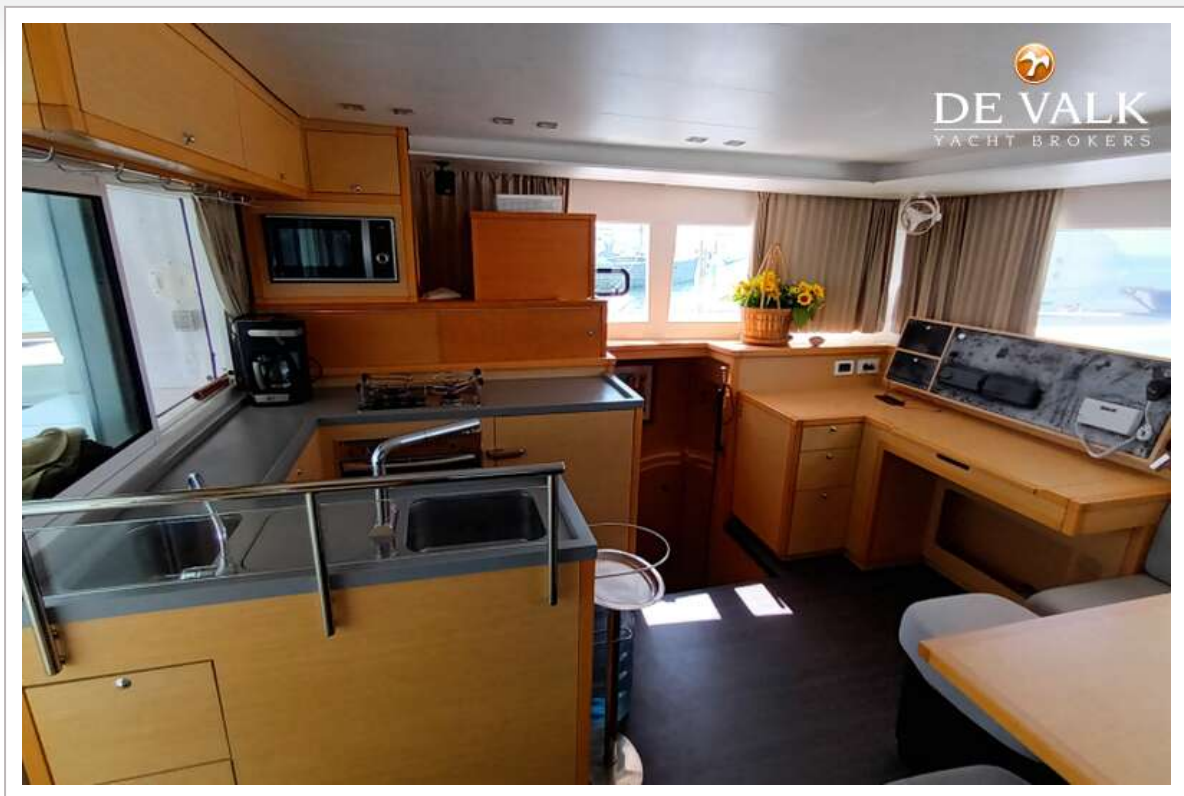




# LAGOON 450 F

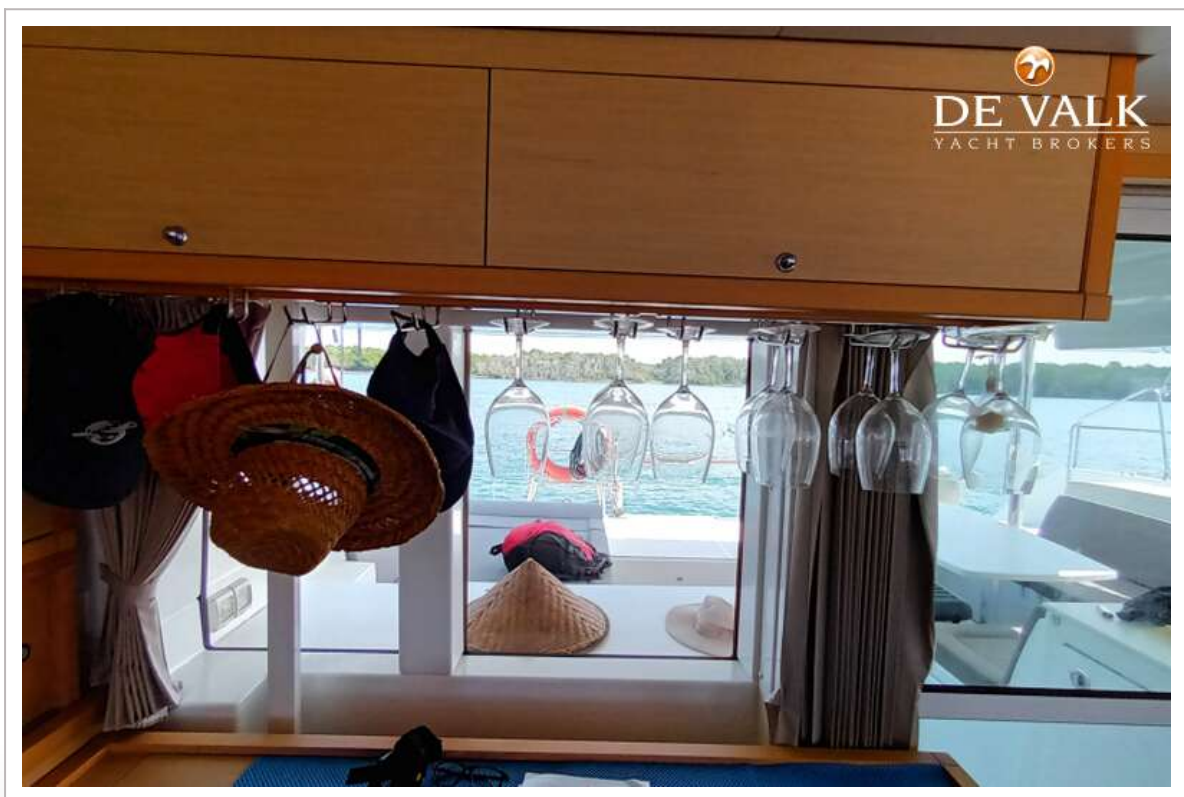
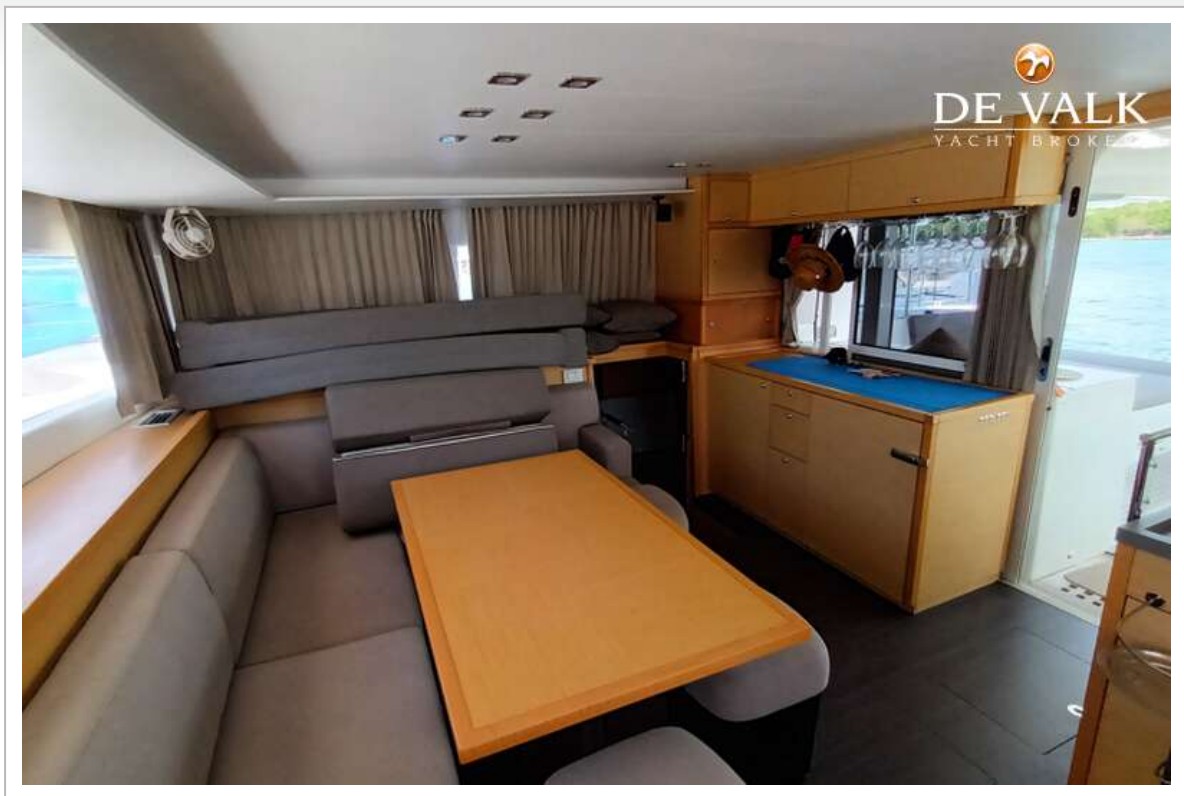


# LAGOON 450 F





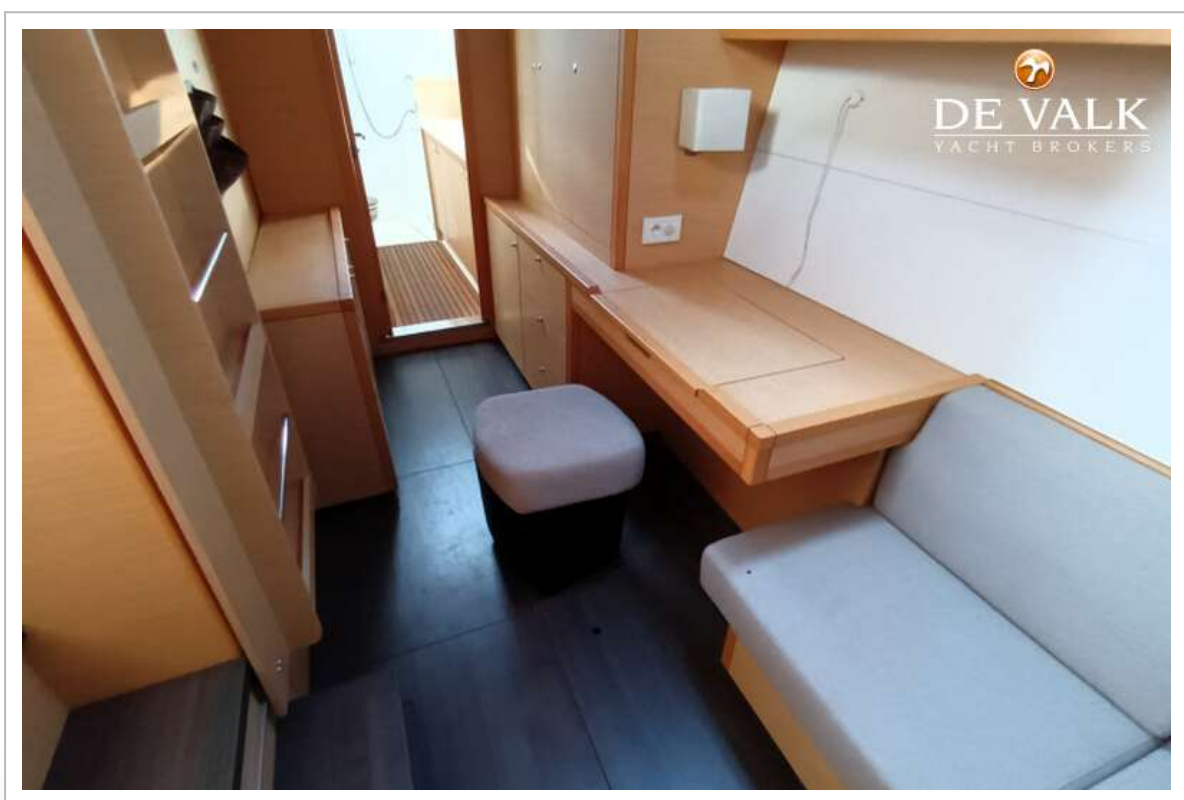
# LAGOON 450 F



# LAGOON 450 F

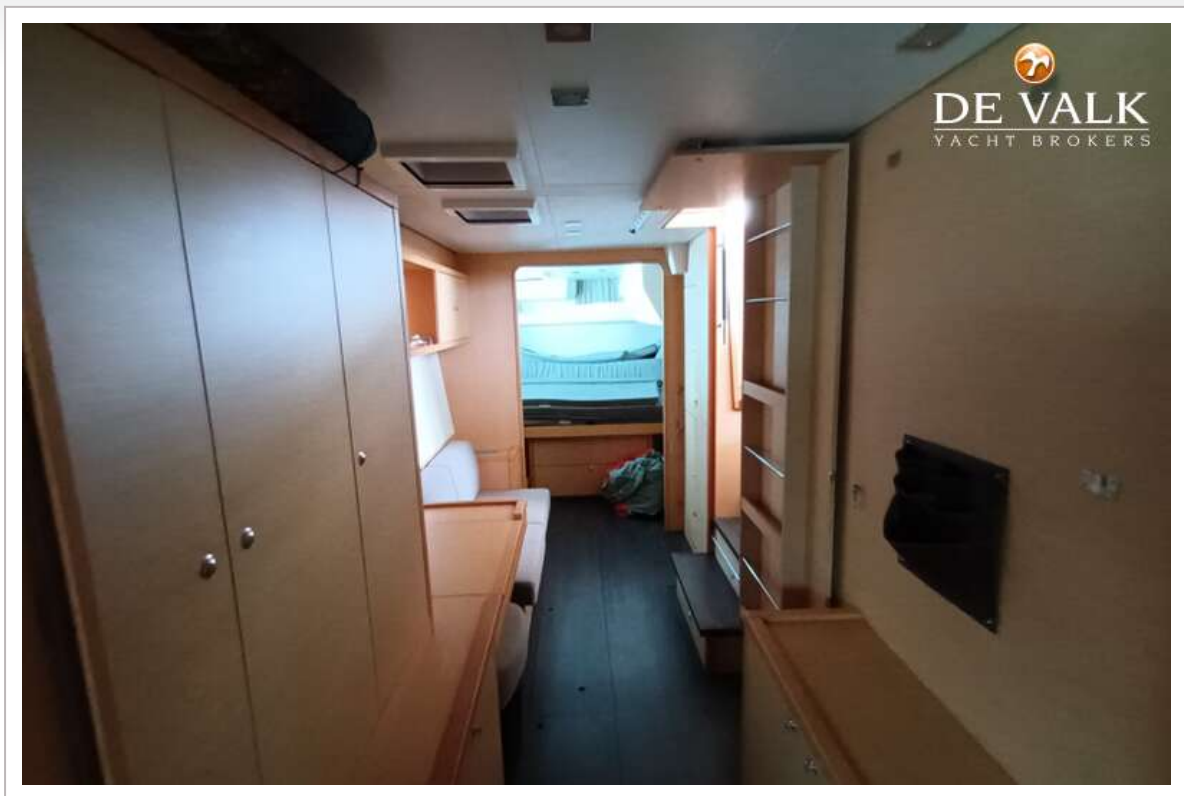


# LAGOON 450 F





# LAGOON 450 F



# LAGOON 450 F

