



DE VALK  
YACHT BROKERS



## HOLTERMAN 53



DE VALK  
YACHT BROKERS

# HOLTERMAN 53

## BROKER'S COMMENTS

The Holterman yard has a solid reputation as one of the most prestigious yacht builders in Europe. This stylish Holterman 53 is a classic yacht, designed with timeless elegance and modern functionality. Built under CE class A and equipped with hydraulic stabilizers, she is very suitable for long international voyages in comfort, elegance and style.

*Reinoud Bicker Caarten*

## SPECIFICATIONS

<b>Dimensions</b>	16.20 x 4.90 x 1.30 (m)	<b>Builder</b>	Holterman yachting BV
<b>Built</b>	2007	<b>Cabins</b>	2
<b>Material</b>	Steel	<b>Berths</b>	6
<b>Engine(s)</b>	1 x Iveco NEF370N60ENTM37 diesel	<b>Hp/Kw</b>	370.00 (hp), 272.32 (kw)
<b>Asking price</b>	€ 595.000 (VAT Paid)	<b>Lying</b>	contact sales office

## CONTACT

<b>Sales office</b>	De Valk Portugal	<b>Telephone</b>	+351 308 812321
<b>Address</b>	Edifício Administrativo - Ponta da Areia 8500 - 345 Portimão PT	<b>E-mail</b>	portugal@devalk.nl

## DISCLAIMER

These particulars are given in good faith as supplied but cannot be guaranteed.



## GENERAL

Model	HOLTERMAN 53
Type	motor yacht
LOA (m)	16,20
Beam (m)	4,90
Draft (m)	1,30
Air draft (m)	5,50
Headroom (m)	2,05
Year built	2007
Builder	Holterman yachting BV
Country	The Netherlands
Designer	Vripack Yachtdesign Sneek
Displacement (t)	38,4
Gross tonnage	50
Net tonnage	12
CE norm	A
Hull material	steel
Hull colour	Dark blue
Hull thickness (mm)	5
Hull shape	Fast Displacement Hull
Superstructure material	steel
Rubbing strake	steel
Deck material	steel
Deck finish	teak
Superstructure deck finish	non-skid paint
Cockpit deck finish	teak
Antifouling (year)	2024
Window frame	aluminium
Window material	double glazing Tempered glass
Deckhatch	yes
Portholes	aluminium



Insulation	foam
Mast can be lowered	hydraulic
Fuel tank (litre)	stainless steel 2x
Level indicator (fuel tank)	yes
Freshwater tank (litre)	stainless steel 2000L double filter system
Level indicator (freshwater)	yes
Blackwater tank (litre)	stainless steel 350L
Level indicator (blackwater)	yes
Blackwater tank extraction	deck extraction + pump
Greywater tank (litre)	stainless steel 350L
Level indicator (greywater)	yes
Wheel steering	hydraulic Holland Nautic Active steering
Inside helm position	with remote RMC
Outside helm position	with remote control

## ACCOMMODATION

Cabins	2
Berths	6
Interior	cherry
Floor	wood Oak
Aft deck	aft of deck saloon
Pilot house/deck saloon	yes
Headroom saloon (m)	1,95
Sliding roof	electric Glass with sunscreen
Heating	central heating Kabola
Air-conditioning	reverse cycle airco Dometic
Dinette	yes
Opening door to aft deck	2 opening doors
Galley	yes
Countertop	Stone
Sink	stainless steel



Cooker	ceramic Miele 4 burner
Microwave/oven combi	Miele
Fridge	1 x Miele 1xLiebherr in saloon
Freezer	1x Bosch
Hot water system	Engine and Kabola heating
Hot water tap	yes
Coffee maker	yes
Crockery	yes
Owners cabin	French bed
Bed length (m)	2m x 1,6m
Wardrobe	hanging/drawers/shelves
Bathroom	en suite
Toilet	en suite
Toilet system	electric
Wash basin	in the bathroom
Shower	en suite
Guest cabin 1	v-bed
Bed length (m)	2,1m x 0,9m
Wardrobe	hanging and shelves
Bathroom	en suite
Toilet	separate
Toilet system	electric
Wash basin	in the bathroom
Shower	en suite
Washing machine/dryer combi	Miele

## MACHINERY

No of engines	1
Make	Iveco
Type	NEF370N60ENTM37
HP	370



<b>kW</b>	272.32
<b>Fuel</b>	diesel
<b>Year installed</b>	2007
<b>Cruising speed (kn)</b>	8
<b>Consumption (l/hr)</b>	10
<b>Range (nm)</b>	2400
<b>Engine hours</b>	1070
<b>Engine cooling system</b>	freshwater heat exchanger
<b>Drive</b>	V-drive
<b>Engine controls</b>	electrical EMC
<b>Gearbox</b>	hydraulic
<b>Bowthruster</b>	hydraulic With remote control
<b>Sternthruster</b>	hydraulic With remote control
<b>Exhaust</b>	watercooled
<b>Thrust bearing</b>	yes
<b>Propeller type</b>	fixed
<b>Propeller blades</b>	4
<b>Propeller shaft material</b>	stainless steel
<b>Shaft lubrication</b>	water Axiseals
<b>Electric bilge pump</b>	4x
<b>Bilge alarm</b>	yes
<b>Electrical installation</b>	12/24/220
<b>Generator</b>	silent separator Mastervolt 12 Ultra
<b>Batteries</b>	yes
<b>Start battery</b>	2x 200Ah/24V
<b>Service battery</b>	8x 200Ah/24V
<b>Generator battery</b>	yes
<b>Battery monitor</b>	Mastervolt
<b>Battery charger</b>	MAstervolt
<b>Battery charger/inverter</b>	Mastervolt
<b>Diode battery combiners</b>	yes
<b>Shorepower</b>	yes



Insulation transformer	yes
Stabilizers	fin VETUS Hydraulic

## NAVIGATION

Compass	yes
Electric compass	Simrad
Multi control display	Zeus EVO 2 Simrad
VHF	yes
Radar	yes
Radar/GPS/plotter	Simrad Broadband 4G Simrad
Electronic chart(s)	Europe
AIS transceiver	yes
Radio receiver	yes
EPIRB	yes
Navigation lights	yes
Searchlight	yes

## EQUIPMENT

Fixed windscreen	yes
Cockpit cover	yes
Cockpit cushions	yes
Cockpit table	yes
Cockpit chairs	yes
Bathing platform	yes
Boarding ladder	stainless steel
Gangway	Opacmare 8998
Deck shower	yes
Anchor	40kg stainless steel DATC
Windlass	electrical Quick with remote control
Deck wash	yes
Sea railing	stainless steel



Grab rail (superstructure)	stainless steel
Railing side opening gates	yes
Pulpit	yes
Life raft	container
Lifejackets	6x
Wiper	3x new onboard
Fenders	10x
Mooring lines	yes
Spare parts	yes
Tools	yes
TV	yes
Radio-cd player	yes
Speakers in salon	yes
Fire extinguisher	3x
Extinguisher in engine room	yes
Auto extinguisher system	In engine room





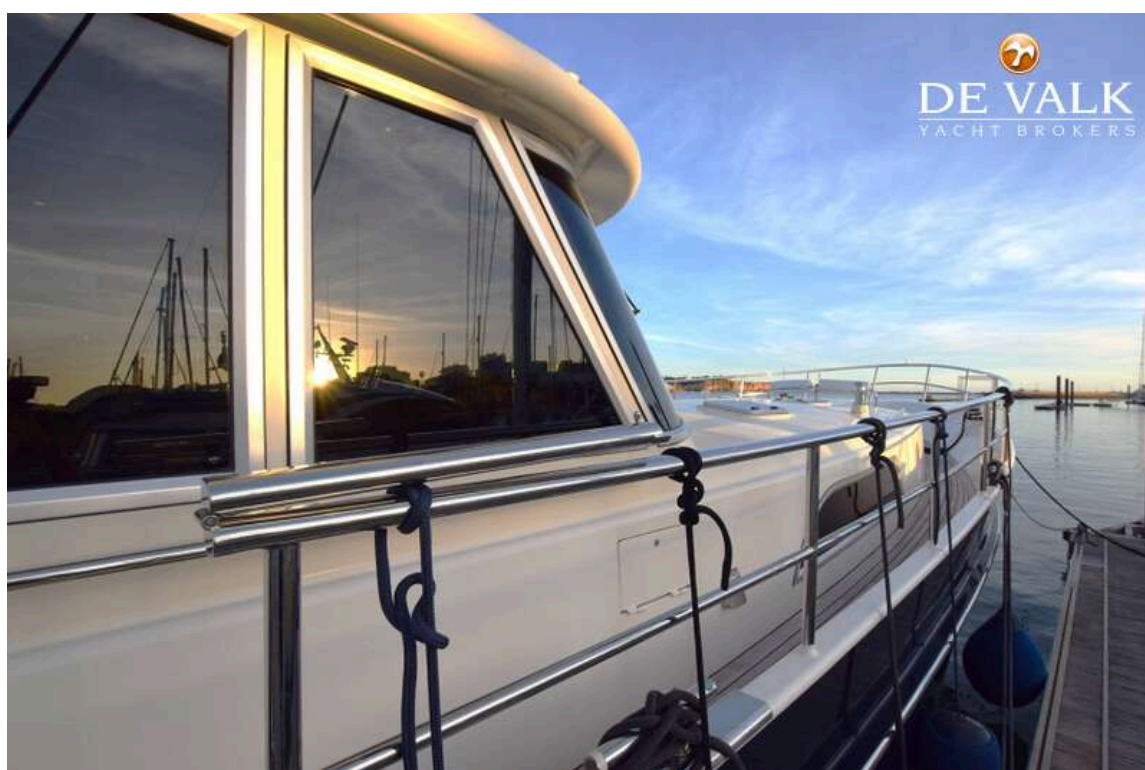
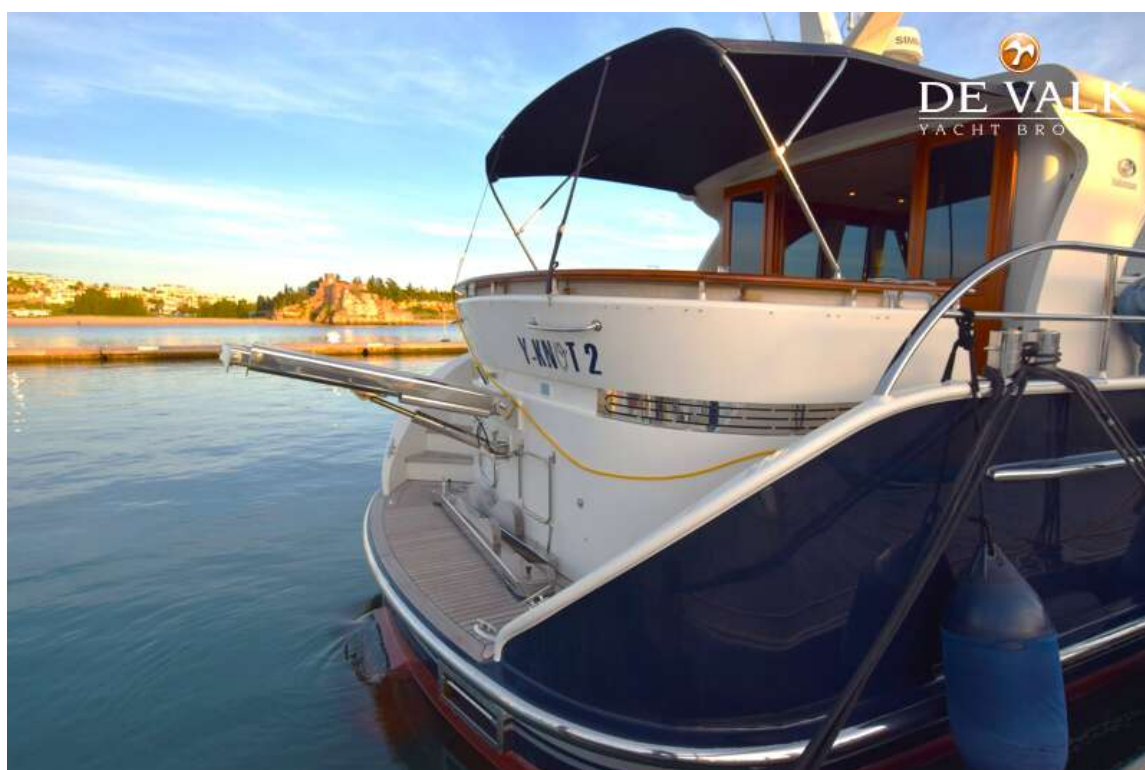








# HOLTERMAN 53







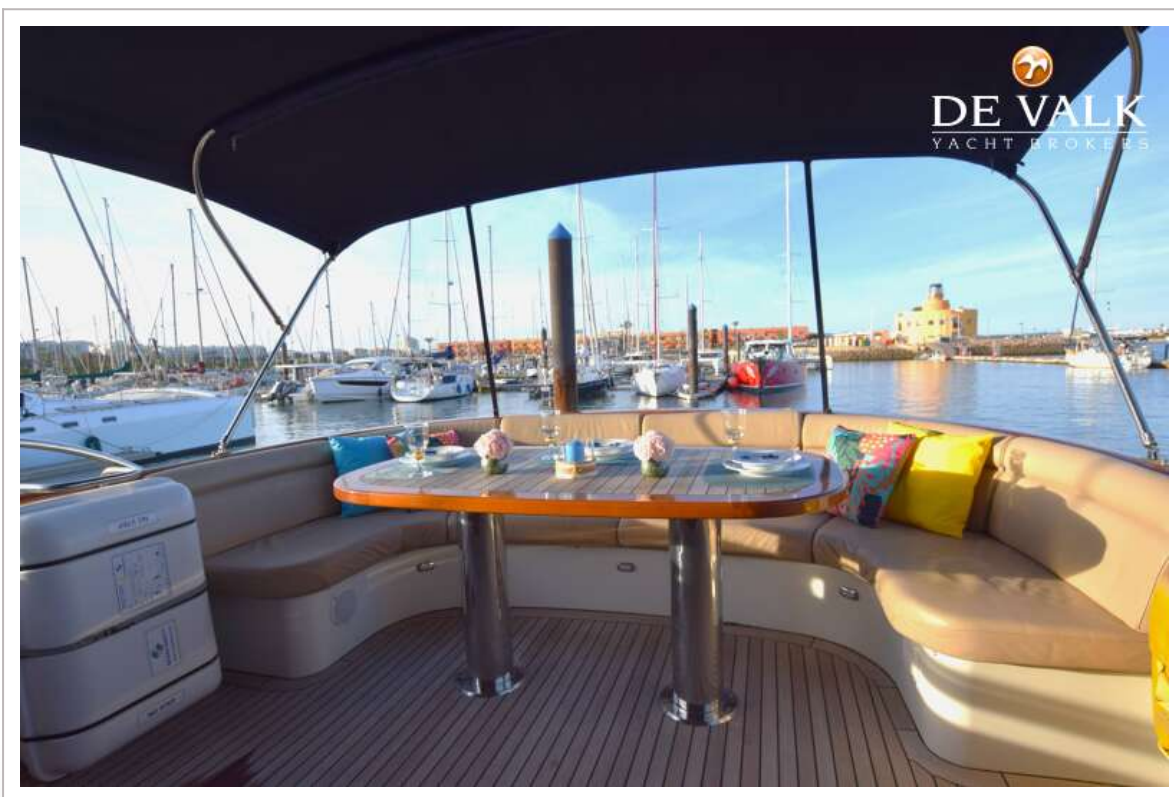
# HOLTERMAN 53



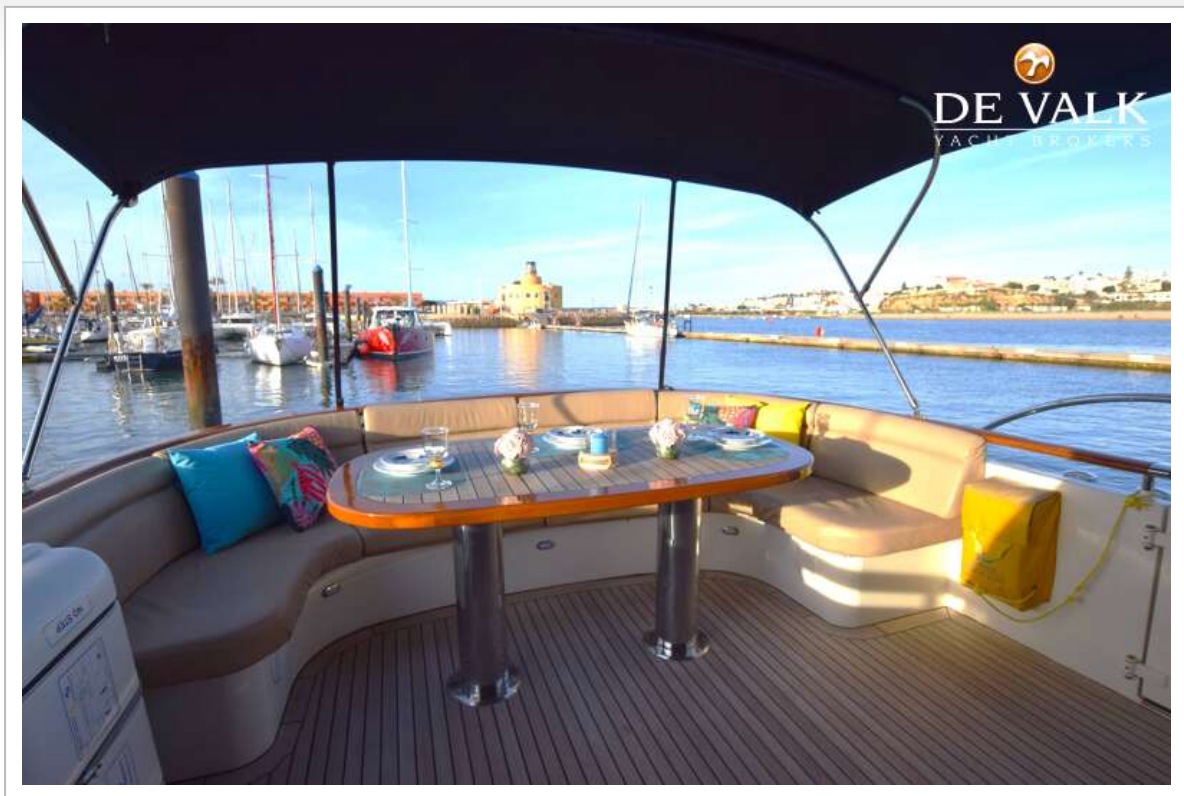


# HOLTERMAN 53









# HOLTERMAN 53





# HOLTERMAN 53



# HOLTERMAN 53

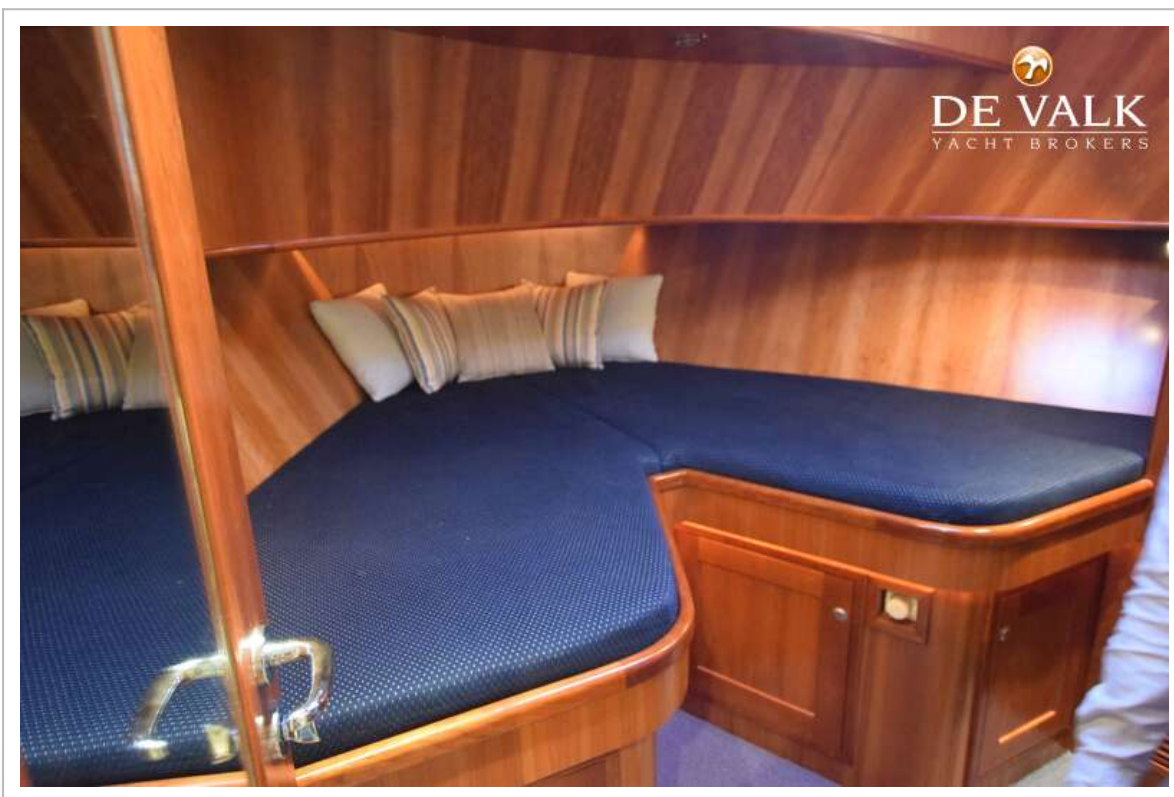
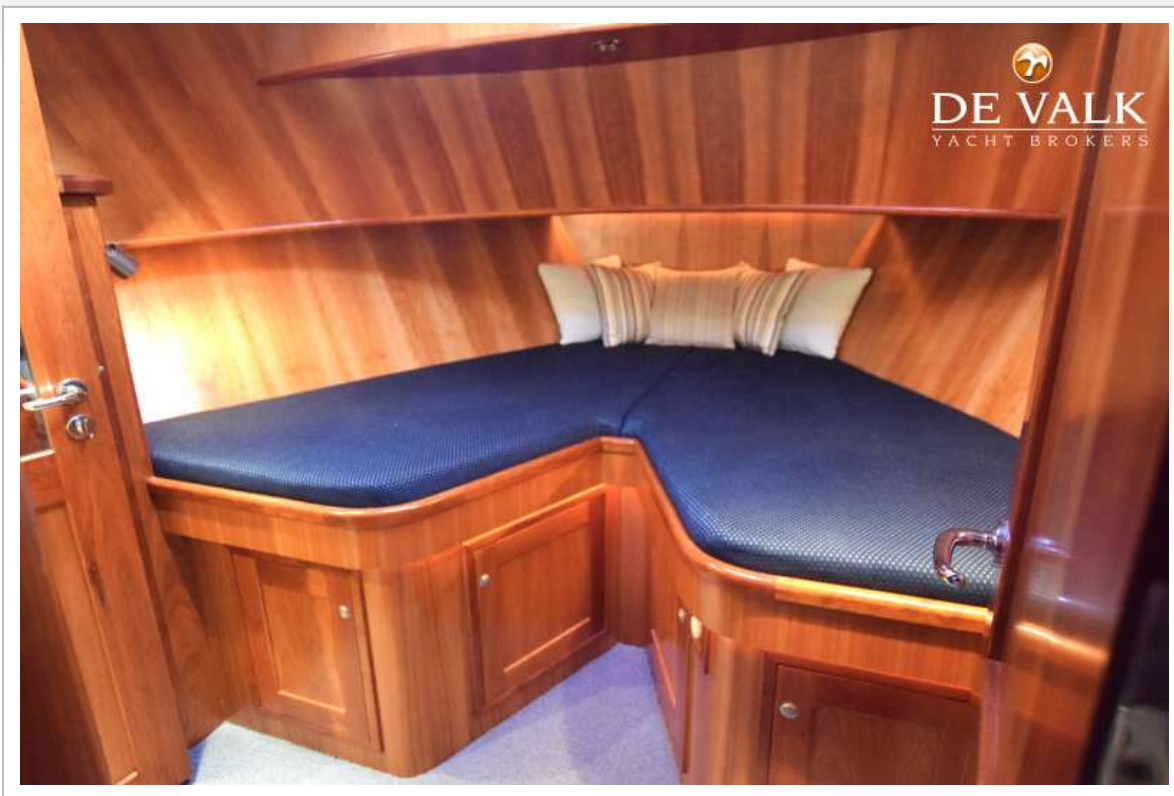




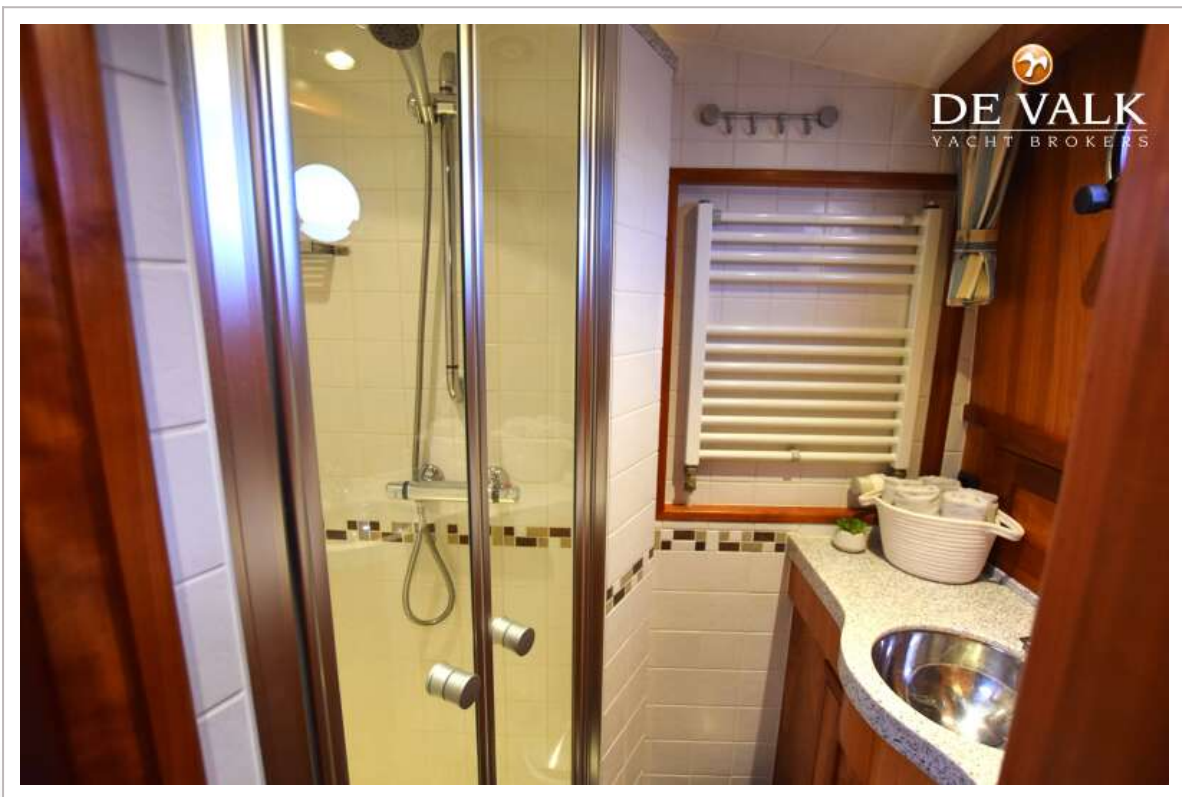
# HOLTERMAN 53



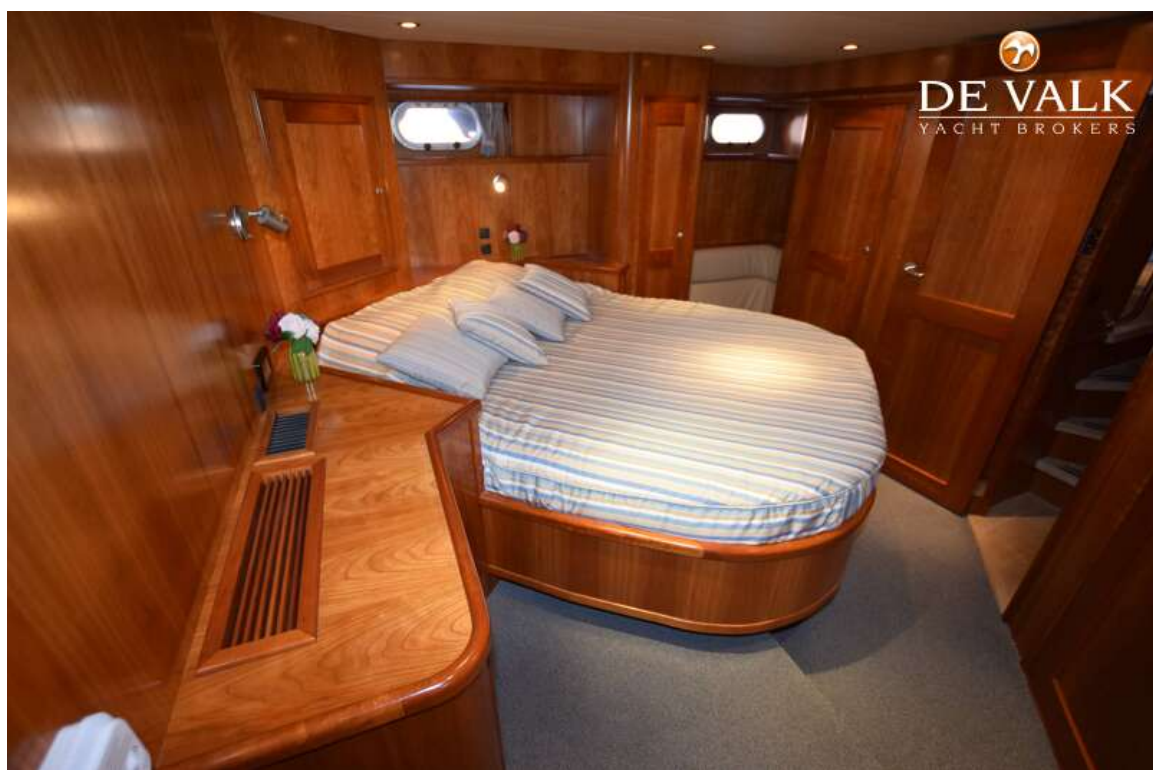
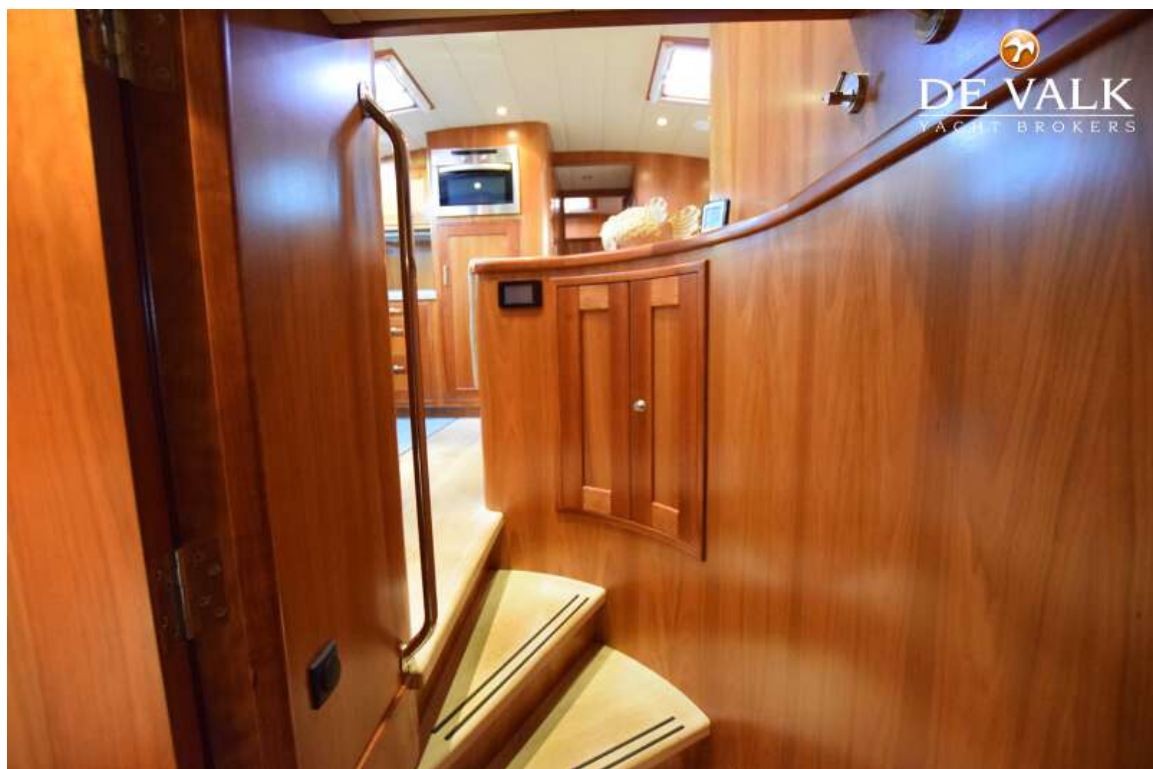
# HOLTERMAN 53







# HOLTERMAN 53





# HOLTERMAN 53



