



DANISH FLOWER 35



DE VALK
YACHT BROKERS

DANISH FLOWER 35

BROKER'S COMMENTS

The Danish Flower 35 named "Jaro" is a neat and well-maintained motorsailor, built with an eye for quality and comfort. Thanks to the reliable Perkins diesel engine and the bow thruster, which was newly installed in 2020, the ship is particularly easy to maneuver, even in tight harbors. On board you will find a spacious saloon with a separate dinette, which makes for a pleasant and functional living space. The Kabola central heating makes staying on board extra comfortable, even on colder days. Ideal for longer trips or relaxing stays on board, all year round.

Jochem Heijermans

SPECIFICATIONS

Dimensions	11.70 x 3.60 x 1.60 (m)	Builder	Bloemsma
Built	1988	Cabins	
Material	Steel	Berths	
Engine(s)	1 x Perkins 4236 diesel	Hp/Kw	83.00 (hp), 61.09 (kw)
Asking price	€ 89.750 (VAT Paid)	Lying	elsewhere / Not at sales office

CONTACT

Sales office	De Valk Belgium	Telephone	+32 586 80 218
Address		E-mail	belgium@devalk.nl
	1401 PT Nieuwpoort		
	BE		

DISCLAIMER

These particulars are given in good faith as supplied but cannot be guaranteed.



DANISH FLOWER 35

GENERAL

Model	DANISH FLOWER 35
Type	motorsailer
LOA (m)	11,70
Beam (m)	3,60
Draft (m)	1,60
Headroom (m)	2,00
Year built	1988
Builder	Bloemsma
Country	The Netherlands
Ballast (tonnes)	3,5
Hull material	steel
Hull colour	black
Hull shape	multi hard chine
Keel type	long keel
Superstructure material	steel
Rubbing strake	steel
Deck material	steel
Deck finish	non-skid paint
Superstructure deck finish	non-skid paint
Cockpit deck finish	non-skid paint
Antifouling (year)	2022
Window frame	aluminium
Window material	tempered glass 12mm
Deckhatch	yes
Portholes	steel
Fuel tank (litre)	200
Level indicator (fuel tank)	yes
Fuel daytank (litre)	80
Level indicator (daytank)	yes
Freshwater tank (litre)	steel 400



Level indicator (freshwater)	yes
Blackwater tank (litre)	yes
Blackwater tank extraction	pump
Wheel steering	hydraulic
Inside helm position	yes
Outside helm position	yes
Emergency tiller	yes

ACCOMMODATION

Interior	oak
Floor	teak and holly
Open cockpit	yes
Saloon	yes
Headroom saloon (m)	1,95
Heating	central heating Kabola
Dinette	yes
Dinette to convert into berth	yes
Opening door to cockpit	yes
Galley	yes
Countertop	wood
Sink	stainless steel
Cooker	calor gas Eno (2009)
Oven	Eno (2009)
Hot water system	geyser on Calor Gas
Water pressure system	electrical
Owners cabin	double bed
Wardrobe	hanging/drawers/shelves
Bathroom	en suite
Toilet	en suite
Toilet system	manual
Wash basin	in the bathroom



MACHINERY

No of engines	1
Make	Perkins
Type	4236
HP	83
kW	61.09
Fuel	diesel
Year installed	1988
Engine cooling system	freshwater heat exchanger
Drive	shaft
Engine controls	bowden cable
Gearbox	hydraulic
Bowthruster	electric Vetus (2020)
Exhaust	watercooled
Propeller type	fixed
Shaft lubrication	grease
Manual bilge pump	yes
Electric bilge pump	yes
Electrical installation	12V/220V
Batteries	3x
Battery monitor	yes
Battery charger	12V/60Ah
Inverter	Mastervolt 1200W
Wind generator	yes
Solar panel	4x
Shorepower	with cable

NAVIGATION

Compass	yes
Multi control display	Raymarine (2020)
Depth sounder	Seafarer 501



Log	Raymarine (2020)
VHF	Sailtron RT80 + ICOM ic-m 21
Autopilot	Robertson
Rudder angle indicator	VDO
GPS	GPS Shipmate RS 5700 + Garmin 72
Radar/plotter	Raytheon RL80C
Navigation lights	yes

EQUIPMENT

Fixed windscreen	yes
Bimini	yes
Cockpit cushions	yes
Cockpit table	yes
Anchor	yes
Anchor chain	40m
Windlass	electrical (2020)
Capstan	yes
Sea railing	wire
Grab rail (superstructure)	stainless steel
Railing side opening gates	2x
Pushpit	yes
Pulpit	yes
Wiper	yes
Fenders	yes
Mooring lines	yes
Radio	yes
Speakers in salon	yes

RIGGING

Rigging	ketch-cutter
Standing rigging	wire



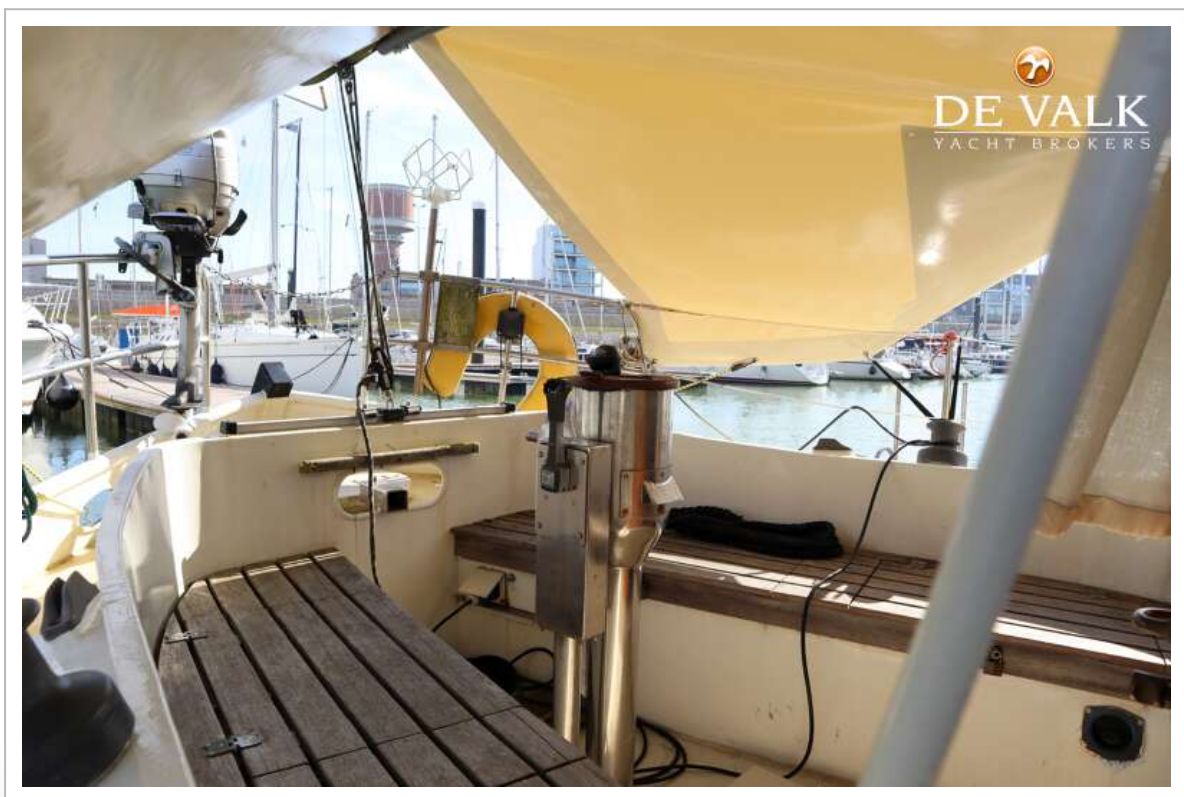
Material mast	aluminium
Spreaders	2x
Mainsail	Wittevrongel (2010)
Mainsail cover	yes
Genoa	Wittevrongel (2010)
Spinnaker	yes
Self tacking jib installation	yes
Primary sheet winch	yes
Genoa sheetwinches	yes



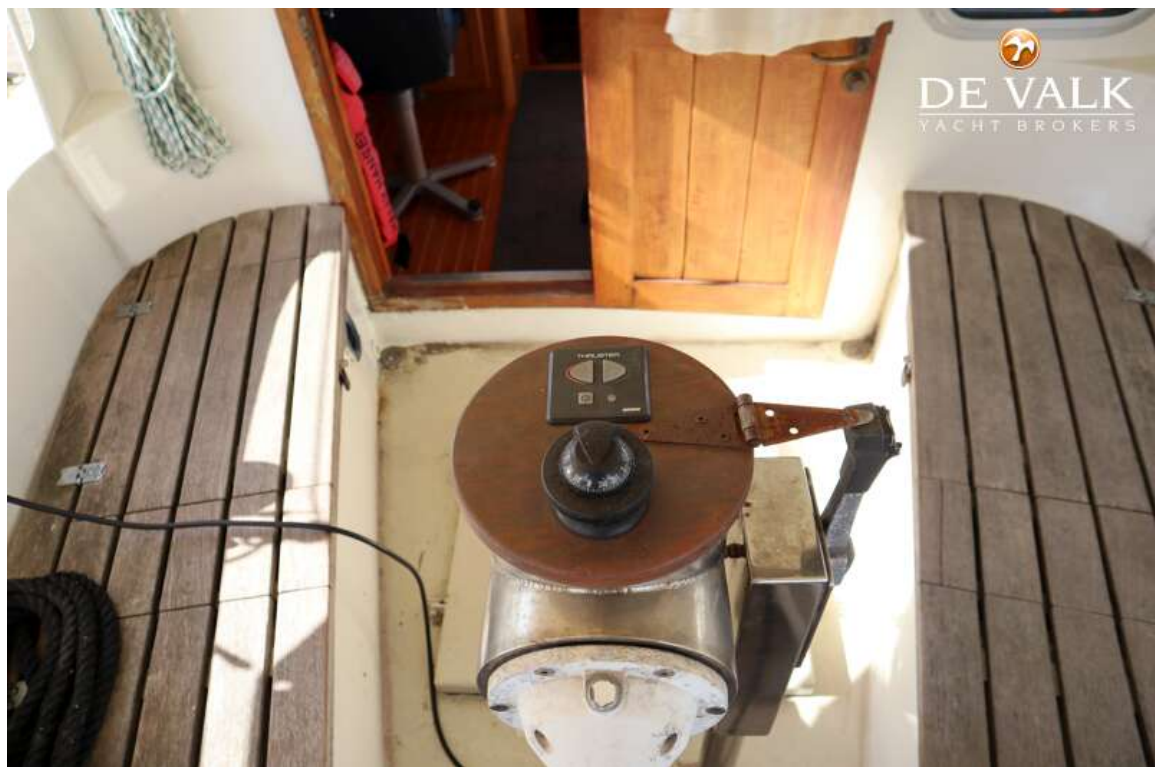
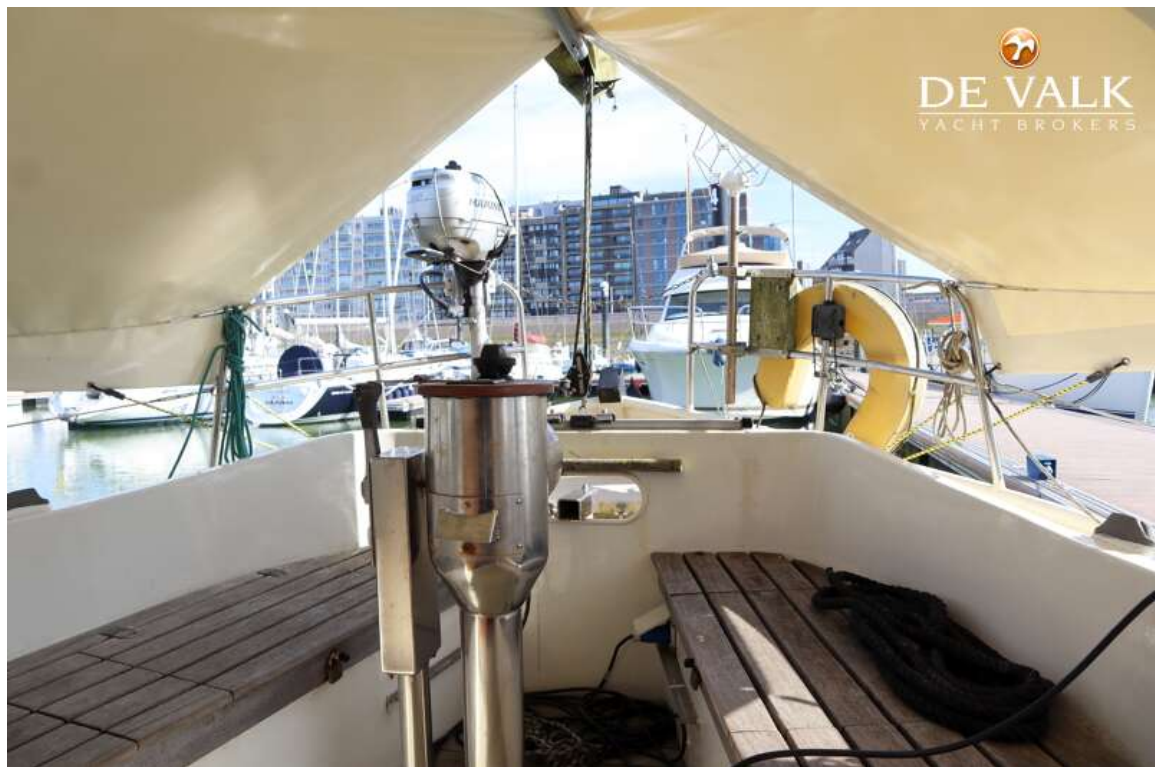
DANISH FLOWER 35



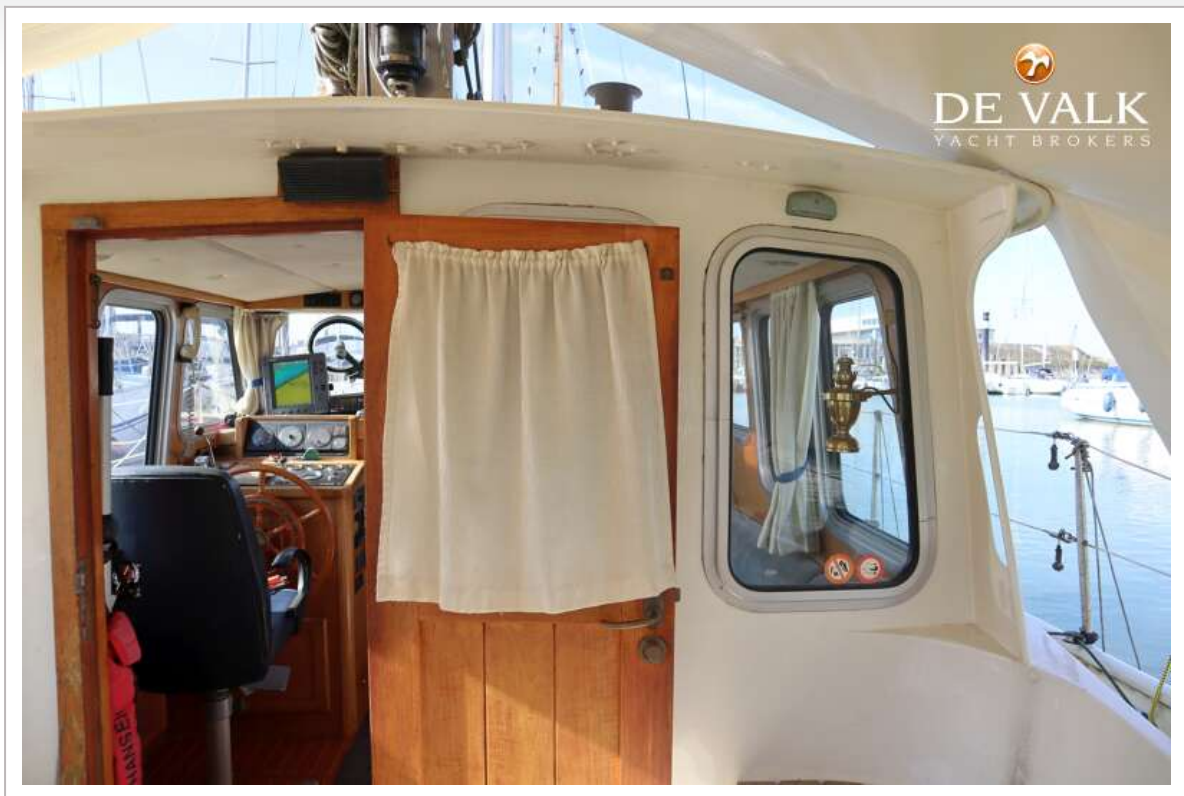
DANISH FLOWER 35



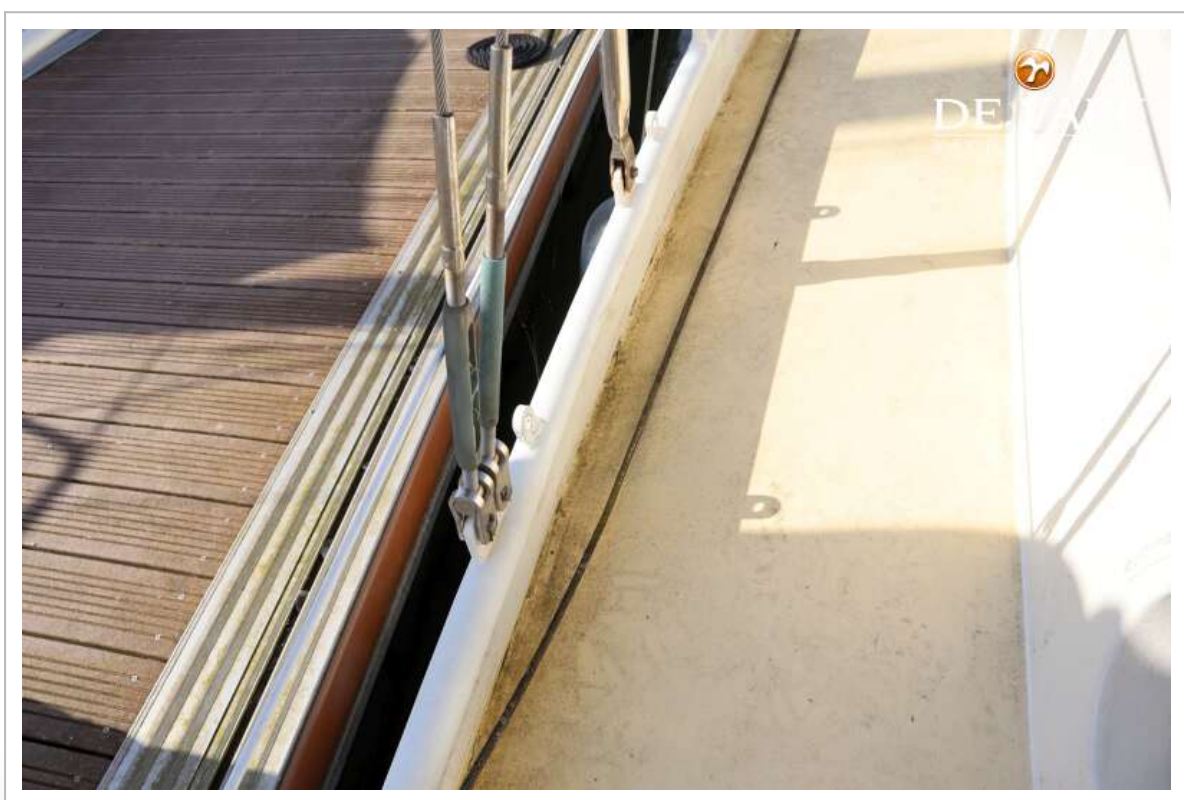
DANISH FLOWER 35



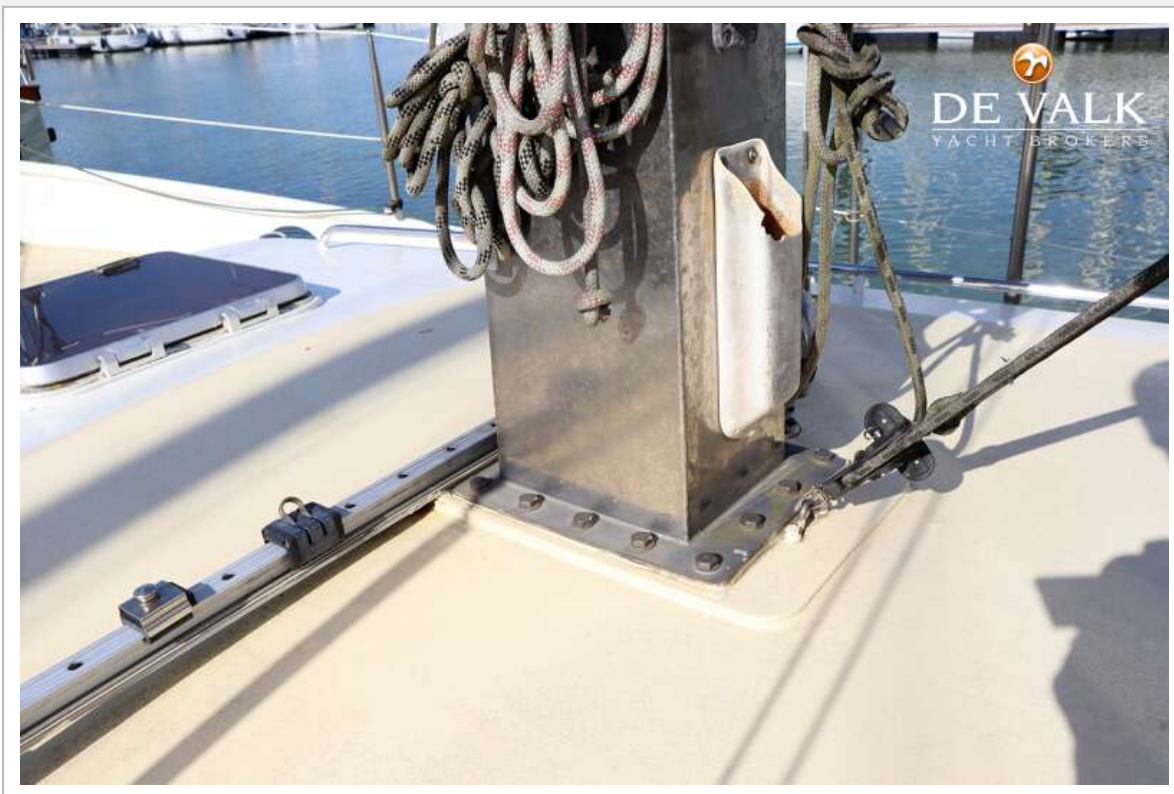
DANISH FLOWER 35



DANISH FLOWER 35



DANISH FLOWER 35



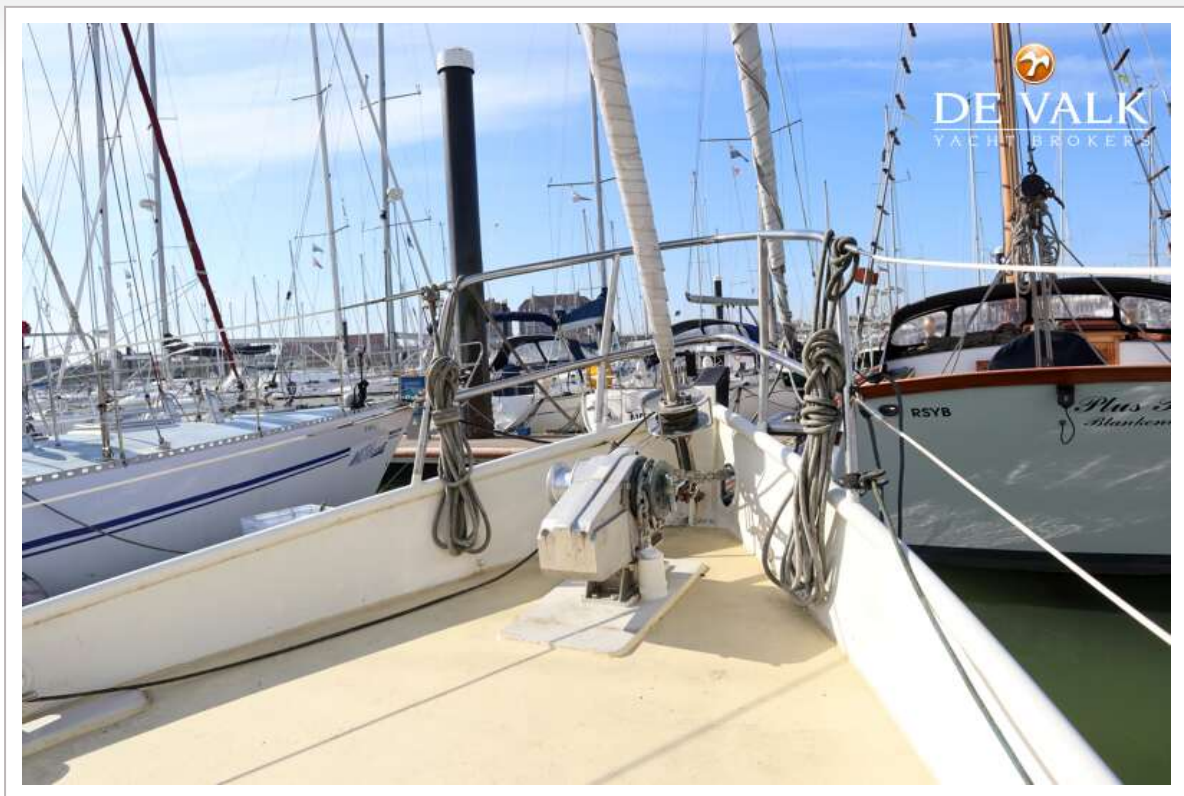
DANISH FLOWER 35



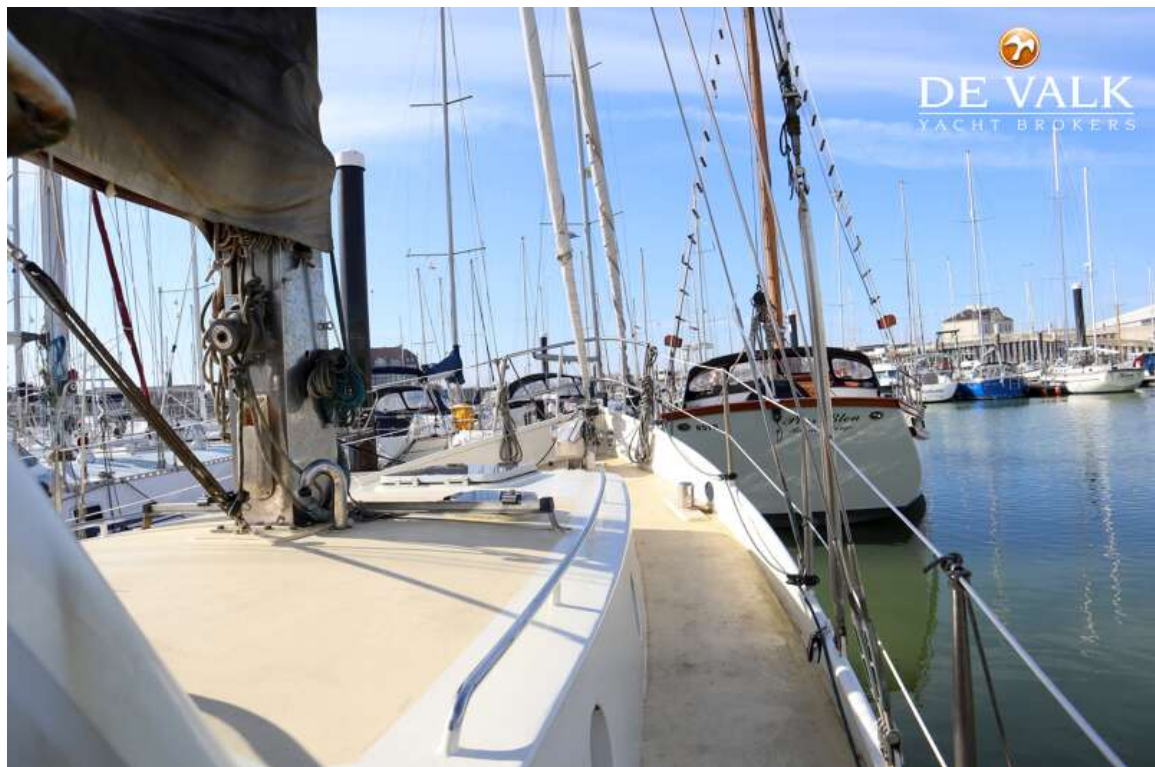
DANISH FLOWER 35



DANISH FLOWER 35



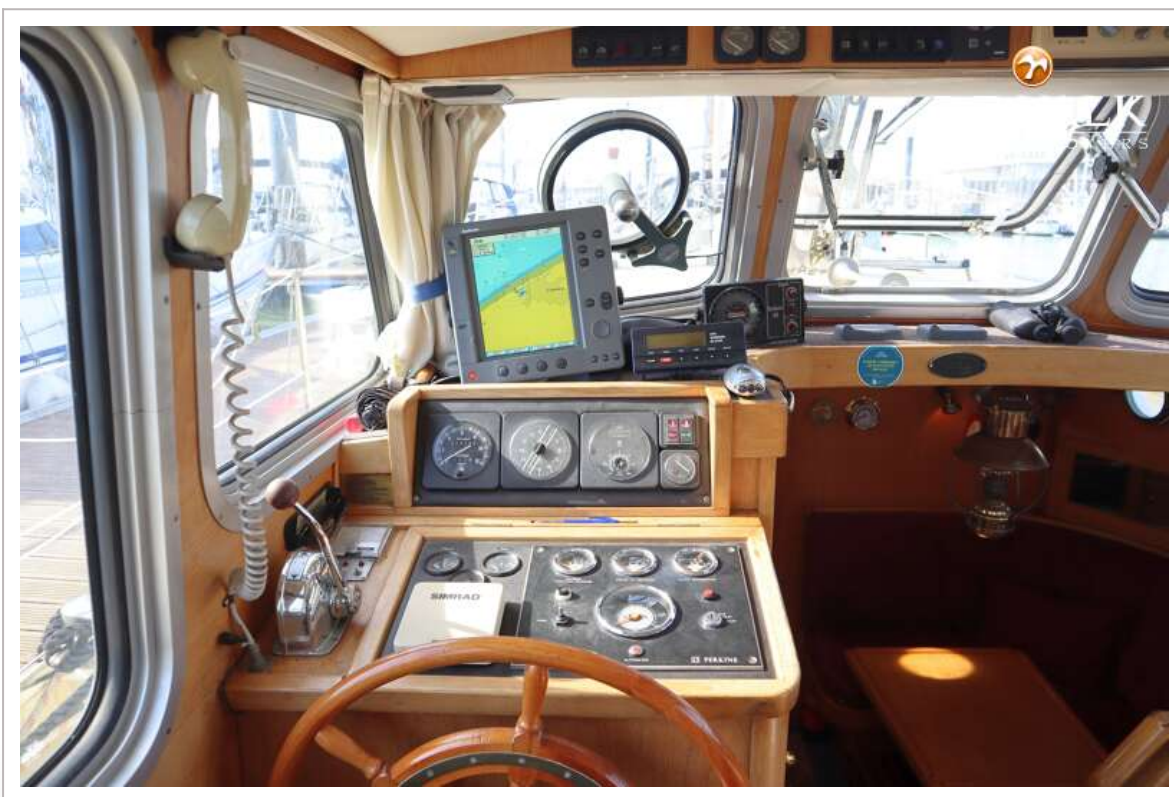
DANISH FLOWER 35



DANISH FLOWER 35



DANISH FLOWER 35

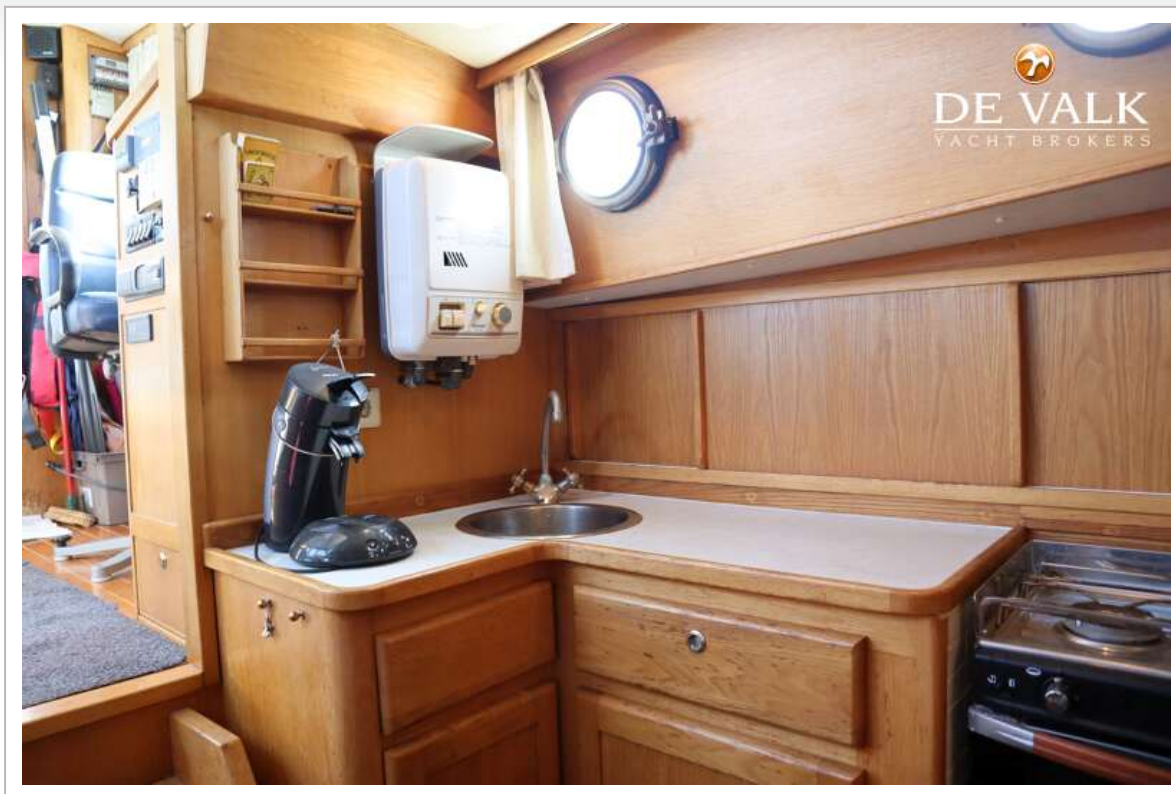




DANISH FLOWER 35



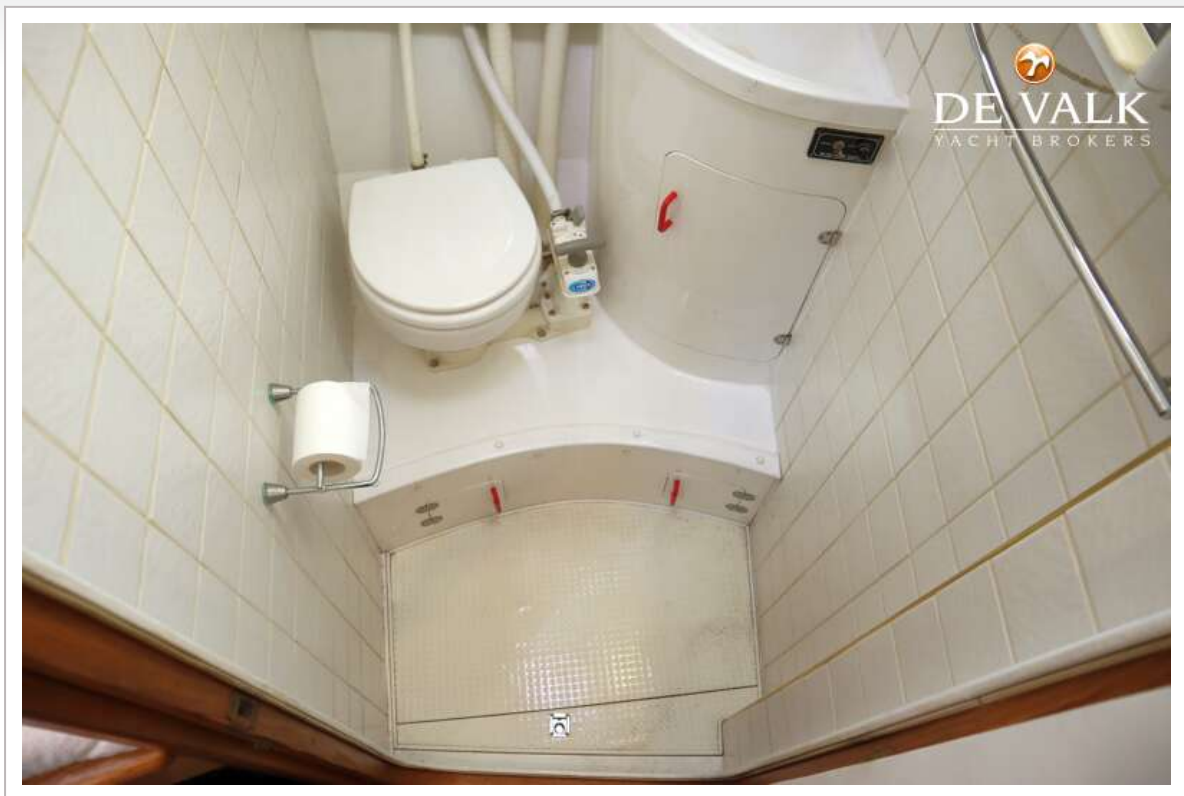
DANISH FLOWER 35



DANISH FLOWER 35



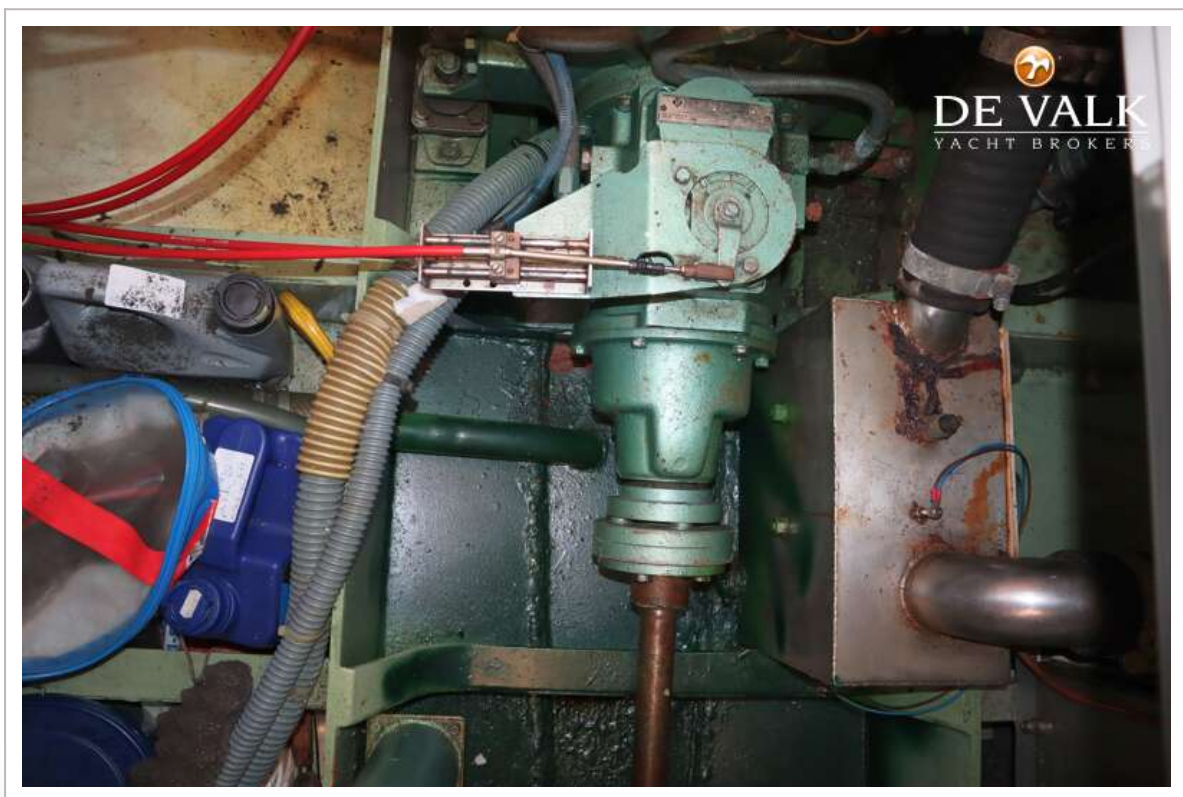
DANISH FLOWER 35



DANISH FLOWER 35



DANISH FLOWER 35



DANISH FLOWER 35

