



BENETEAU OCEANIS 42 CC



BROKER'S COMMENTS

The 2002 Beneteau Oceanis 42CC "Fleur de Sel" is a stylish and comfortable sailing yacht with a center cockpit design. This well-maintained ship is equipped with brand new Raymarine equipment from 2024, which ensures modern navigation and extra ease of use. The interior offers a spacious and warm atmosphere, ideal for long trips or comfortable living on board. The powerful engine and well-designed sail make her both reliable and enjoyable to use. Thanks to her good condition, she is immediately ready for new adventures on the water. To be viewed by appointment.

Jochem Heijermans

SPECIFICATIONS

Dimensions	12.74 x 3.91 x 1.80 (m)	Builder	Bénéteau Group
Built	2002	Cabins	2
Material	GRP	Berths	6
Engine(s)	1 x Volvo Penta D2-55 diesel	Hp/Kw	55.00 (hp), 40.48 (kw)
Asking price	€ 117.500 (VAT Paid)	Lying	elsewhere / Not at sales office

CONTACT

Sales office	De Valk Belgium	Telephone	+32 586 80 218
Address	1401 PT Nieuwpoort BE	E-mail	belgium@devalk.nl

DISCLAIMER

These particulars are given in good faith as supplied but cannot be guaranteed.



BENETEAU OCEANIS 42 CC

GENERAL

Model	BENETEAU OCEANIS 42 CC
Type	sailing yacht
LOA (m)	12,74
LWL (m)	11,07
Beam (m)	3,91
Draft (m)	1,80
Air draft (m)	16,15
Year built	2002
Launched	2003
Builder	Bénéteau Group
Country	France
Designer	Groupe FINOT Design
Displacement (t)	8,96
Ballast (tonnes)	2,5
Gross tonnage	17,05
Hull material	GRP
Hull colour	white
Hull shape	round-bilged
Keel type	fin keel
Superstructure material	GRP
Rubbing strake	stainless steel
Deck material	GRP
Deck finish	teak
Superstructure deck finish	non-skid moulded in
Cockpit deck finish	teak
Antifouling (year)	2024
Dorades	At aft cabin
Window frame	aluminium
Window material	perspex
Deckhatch	yes



Portholes	aluminium
Fuel tank (litre)	polyethylene 254
Level indicator (fuel tank)	yes
Freshwater tank (litre)	polyethylene 580l in 2 tanks
Level indicator (freshwater)	Gauge
Blackwater tank (litre)	polyethylene 2 x 70
Blackwater tank extraction	deck extraction + pump
Wheel steering	hydraulic
Emergency tiller	yes

ACCOMMODATION

Cabins	2
Berths	6
Layout	2 cabin version
Floor	wood
Aft deck	yes
Saloon	yes
Headroom saloon (m)	1,90
Heating	diesel ducted hot air
Chart table	yes
Aft Cabin	yes
Convertible berth	In saloon
Galley	Long shape
Countertop	corian
Sink	stainless steel Double
Cooker	calor gas Eno - 2 burner
Oven	Eno
Microwave	yes
Fridge	Frigomat
Freezer	Compartment
Hot water system	220V + engine



Water pressure system	electrical
Manual and/or foot pump	Fresh & sea water
Owners cabin	French bed Aft
Bed length (m)	1,90 x 1,60
Wardrobe	hanging and shelves
Bathroom	en suite
Toilet	en suite
Toilet system	electric
Wash basin	in the bathroom
Shower	en suite
Guest cabin 1	double bed Forward
Bed length (m)	1,80
Wardrobe	hanging and shelves
Bathroom	en suite
Toilet	en suite
Toilet system	manual
Wash basin	in the bathroom
Shower	en suite

MACHINERY

No of engines	1
Make	Volvo Penta
Type	D2-55
HP	55
kW	40.48
Fuel	diesel
Year installed	2002
Engine cooling system	freshwater heat exchanger
Drive	shaft
Engine controls	bowden cable
Gearbox	hydraulic



Bowthruster	electric
Exhaust	watercooled
Propeller type	fixed Bronze
Propeller blades	3
Propeller shaft material	stainless steel
Shaft lubrication	water
Manual bilge pump	1 x Henderson
Electric bilge pump	2 x Jabsco
Bilge alarm	(2 switches)
Generator	yes
Start battery	1 x 12V / 100Ah (2024)
Service battery	3x (2024)
Battery charger	yes
Solar panel	2x

NAVIGATION

Compass	Plastimo
Electric compass	On autopilot (2024)
Multi control display	Raymarine I50 (2024)
Depth sounder/log	Raymarine I50 (2024)
Windset	Raymarine i60 (2024)
VHF	Raymarine RAY53 (2024)
Autopilot	Raymarine Evolution EV-400 (2024)
Rudder angle indicator	On autopilot
Radar/GPS/plotter	2x Raymarine Aixom 9" / Radar: Quantum 18"
AIS transponder	Raymarine AIS700 Class B (2024)
Navigation lights	yes

EQUIPMENT

Sprayhood	yes
Cockpit cushions	yes



Cockpit table	yes
Bathing platform	yes
Boarding ladder	stainless steel
Deck shower	Hot & cold
Anchor	2x
Windlass	Lofrans Tigres 1500W
Sea railing	stainless steel
Grab rail (superstructure)	stainless steel
Pushpit	yes
Pulpit	yes
Fenders	yes
Mooring lines	yes
Radio-cd player	yes
Cockpit speakers	yes
Speakers in salon	yes

RIGGING

Rigging	sloop
Standing rigging	wire Original (inspected)
Brand mast	Z-Spar
Material mast	aluminium
Spreaders	yes
Fully battened mainsail	yes
Genoa	yes
Genoa furler	Profurl
Gennaker	yes
Reefing System	slabreefing
Boomvang	mechanical Z-Spar
Primary sheet winch	1 x Harken 40" ST 2 speed
Secondary sheet winch	2 x Harken 40" ST 2 speed
Genoa sheetwinches	2 x Harken 53" ST 2 speed



Halyard winches

1 x Harken 16" ST 1 SP (on mast)

Multifunctional winches

halyard/sheet winches 1 x Harken 40" ST 2 speed - electric

Spi-pole

aluminium



BENETEAU OCEANIS 42 CC





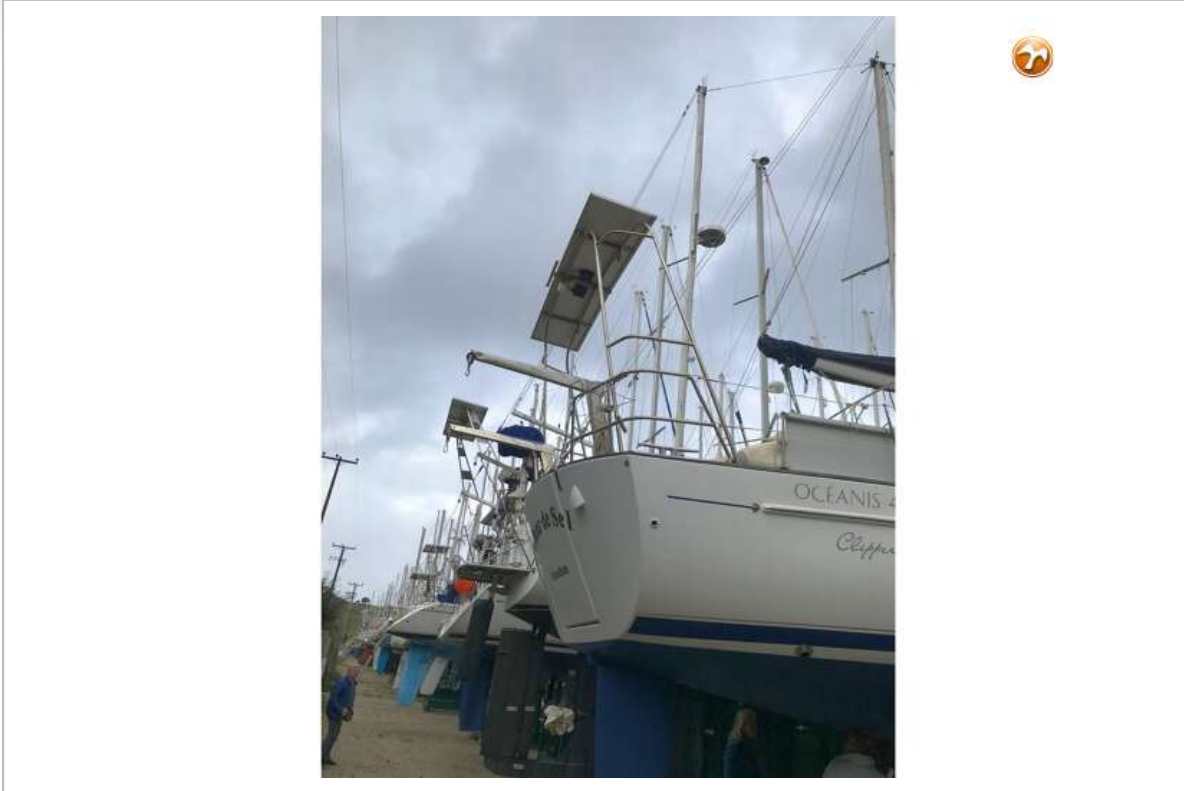
BENETEAU OCEANIS 42 CC



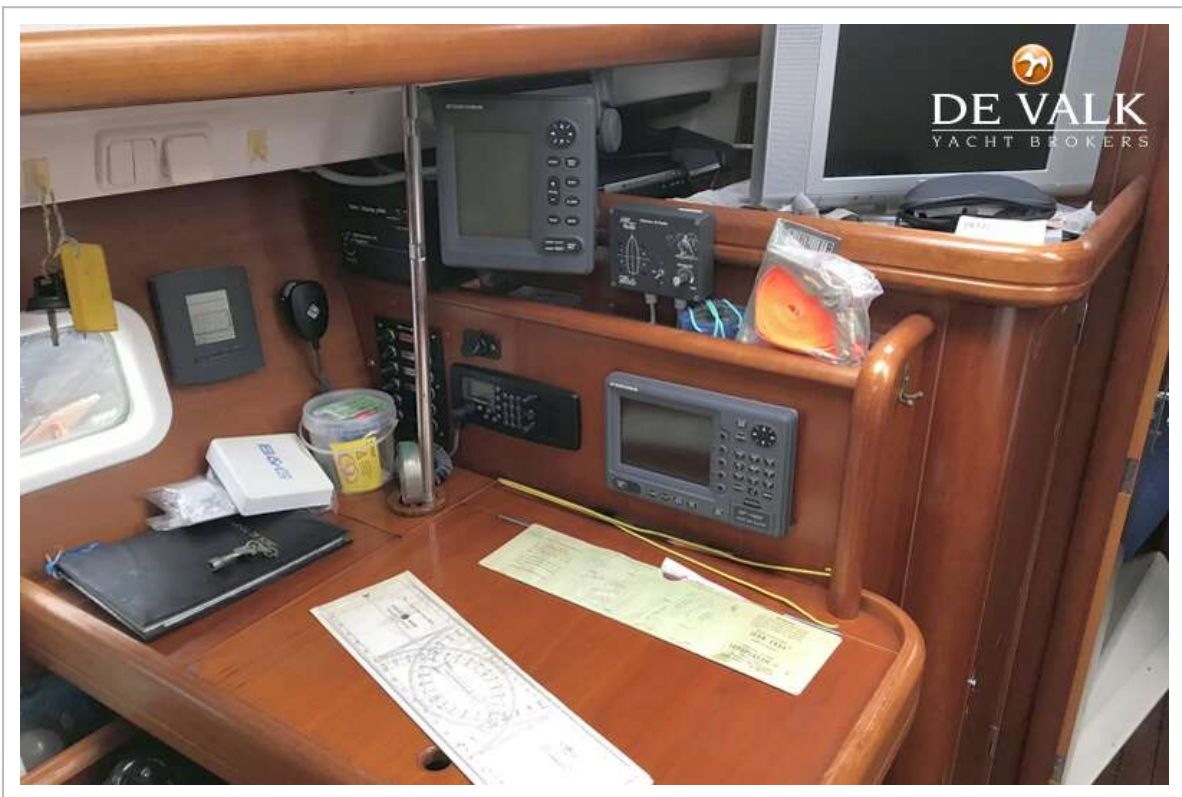
BENETEAU OCEANIS 42 CC



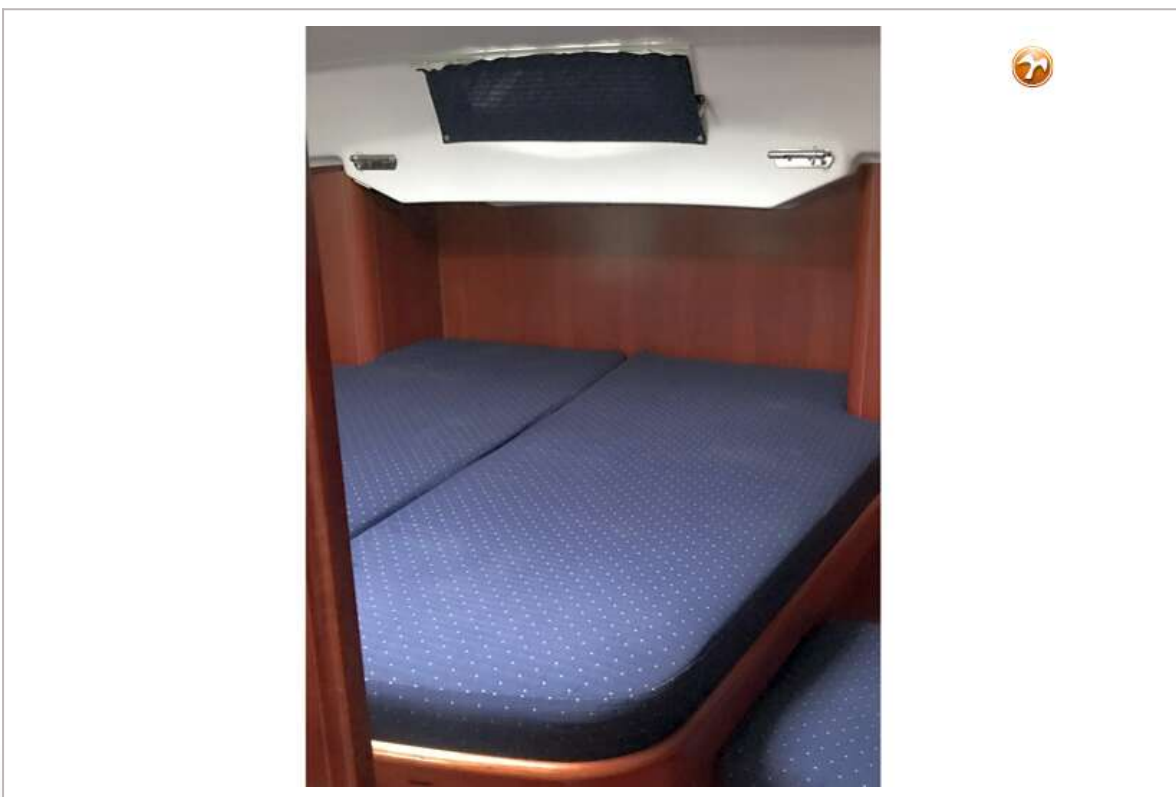
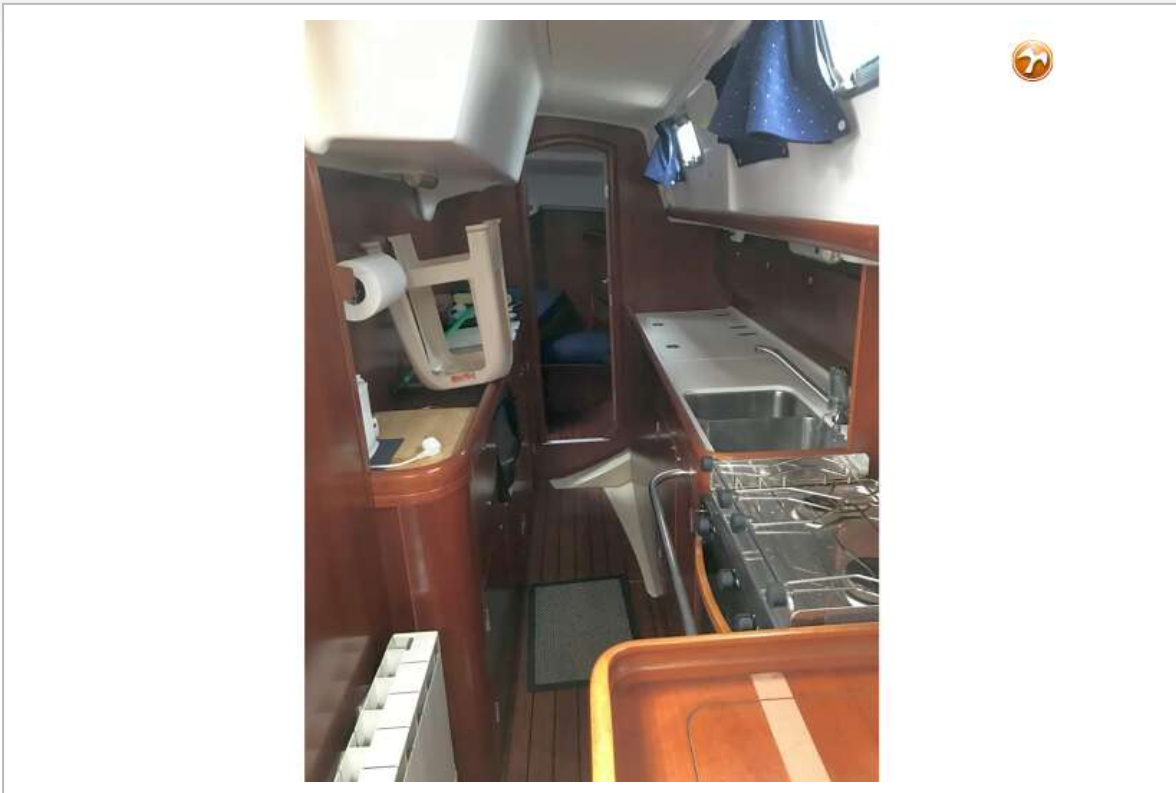
BENETEAU OCEANIS 42 CC

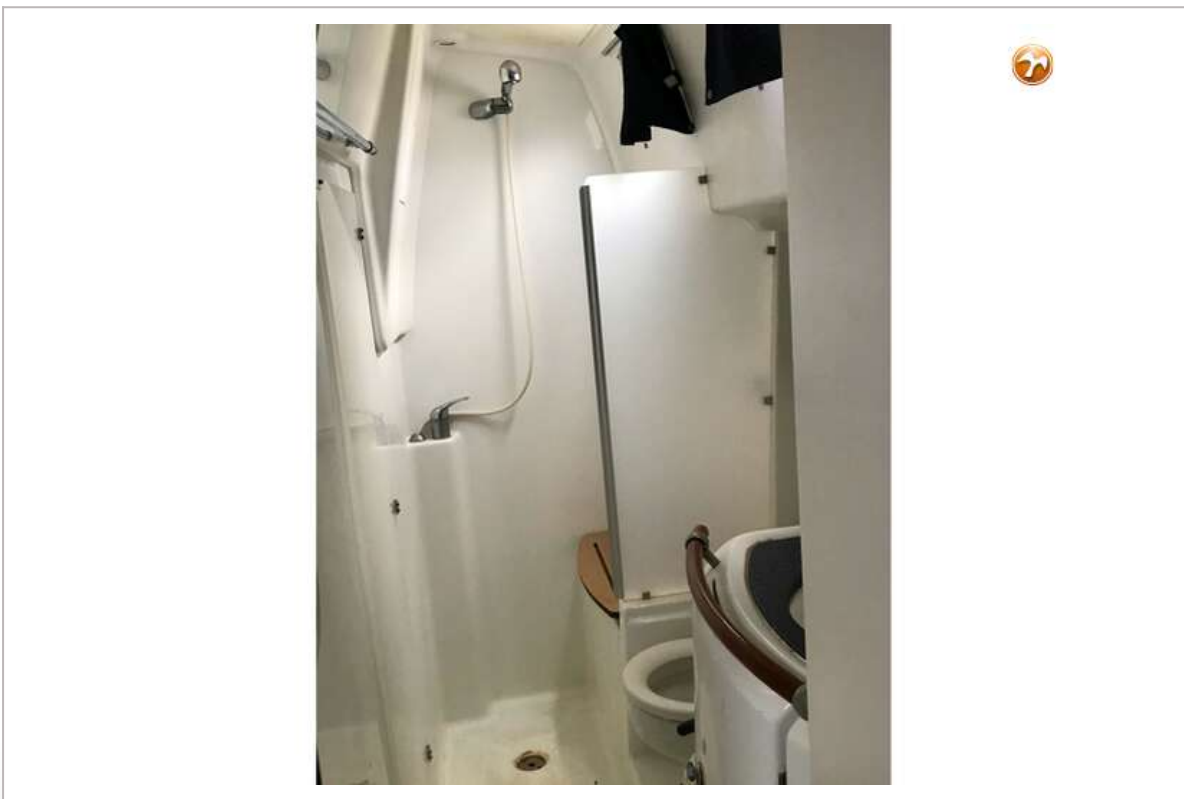
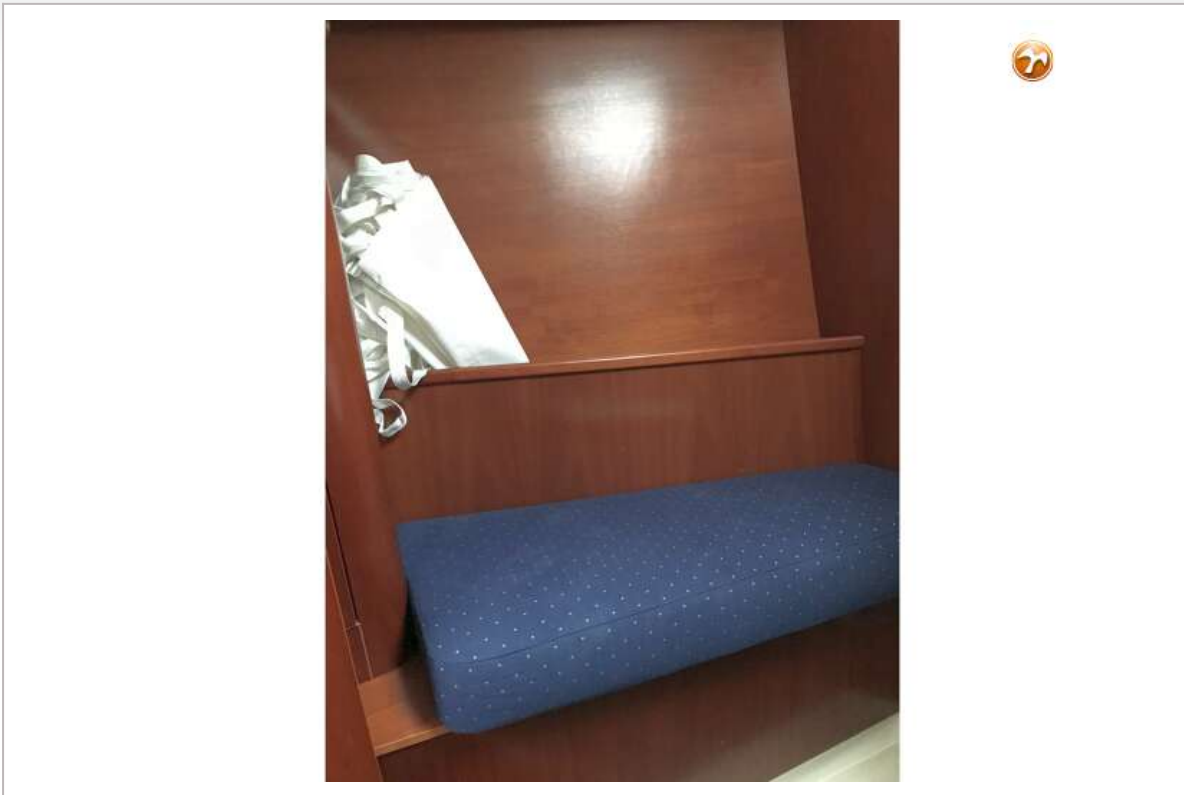


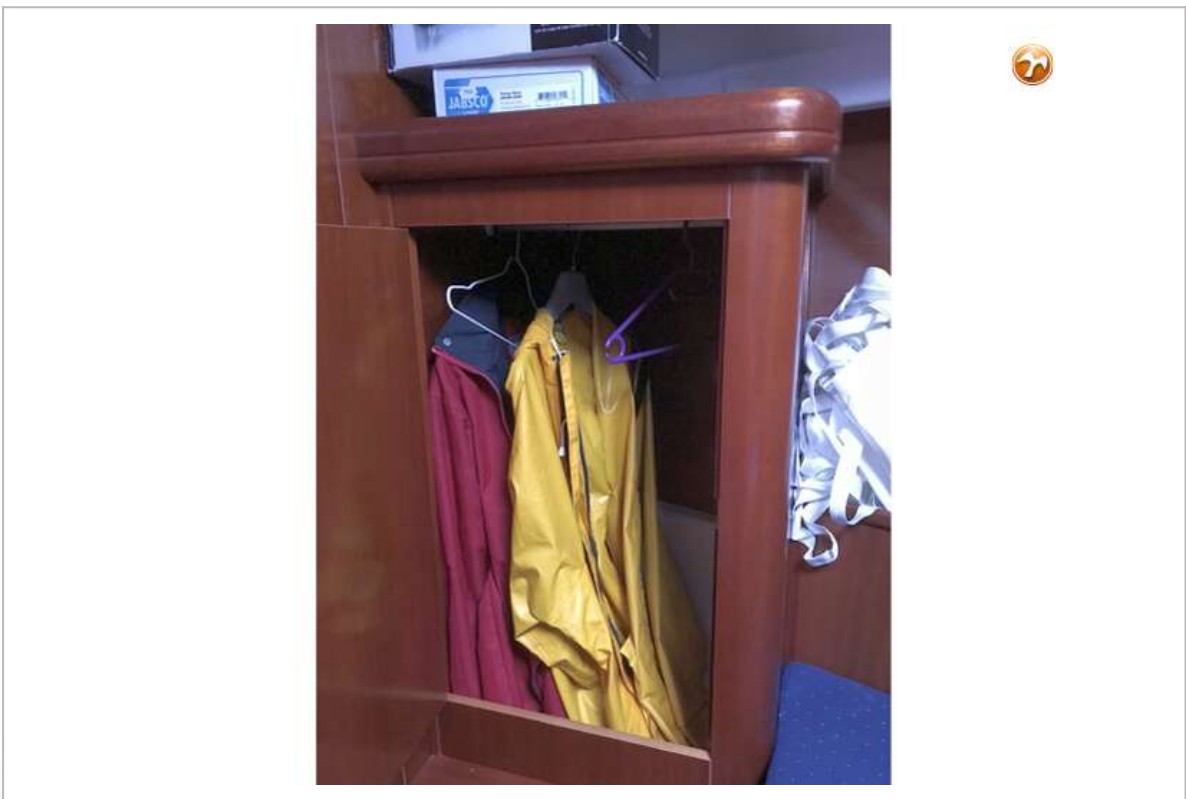
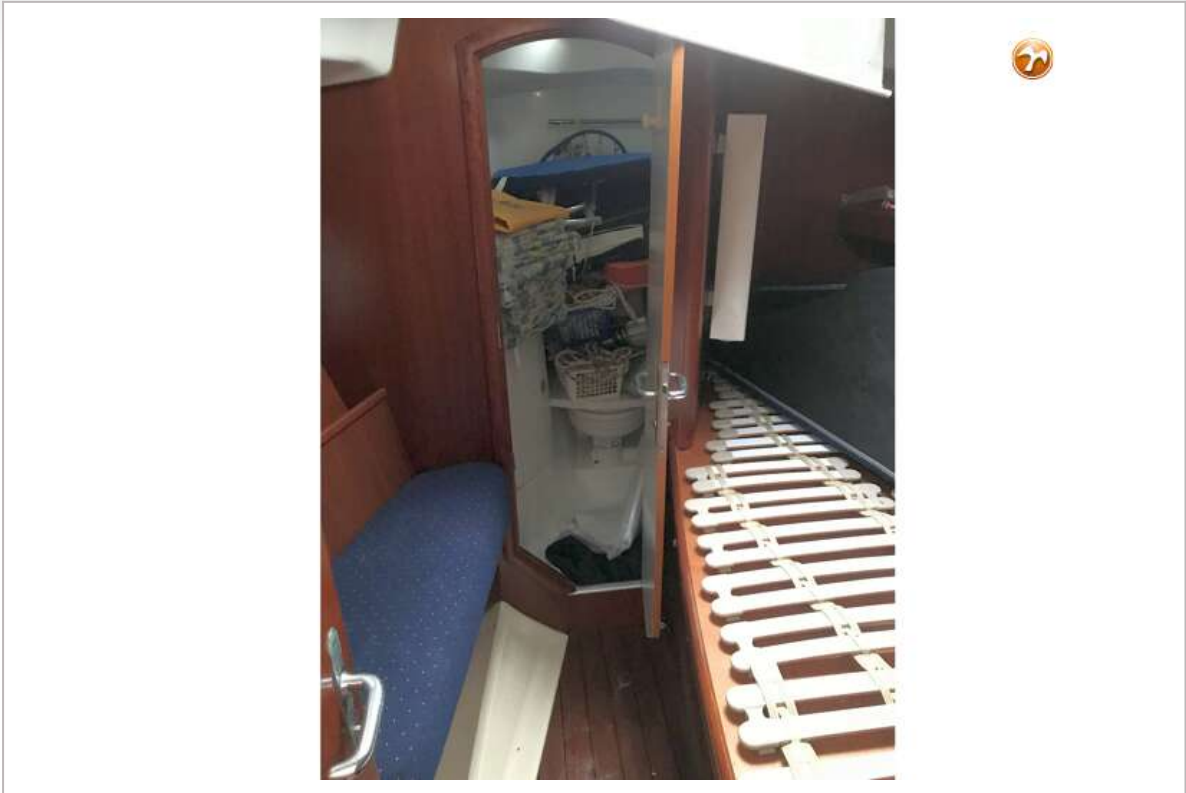
BENETEAU OCEANIS 42 CC



BENETEAU OCEANIS 42 CC









BENETEAU OCEANIS 42 CC

