



DE VALK  
YACHT BROKERS



VAN DER HEIJDEN EXCLUSIVE DELUXE 1600



DE VALK  
YACHT BROKERS

# VAN DER HEIJDEN EXCLUSIVE DELUXE 1600

## BROKER'S COMMENTS

Sleek, stylish, and exceptionally comfortable, this Van der Heijden 1600 Exclusive Deluxe is now available in our sales marina in Loosdrecht. With its modern design, spacious and luxurious interior, and powerful performance, this yacht is perfect for both relaxing day trips and extended stays on board. Visit us and experience the quality and class of this top-tier Dutch yacht for yourself.

*Mark Hesselmans*

## SPECIFICATIONS

<b>Dimensions</b>	15.92 x 4.80 x 0.90 (m)	<b>Builder</b>	Van der Heijden Yachts
<b>Built</b>	2021	<b>Cabins</b>	2
<b>Material</b>	Aluminium	<b>Berths</b>	4
<b>Engine(s)</b>	2 x FPT N67 diesel	<b>Hp/Kw</b>	2 x 550.00 (hp), 404.80 (kw)
<b>Asking price</b>	€ 1.190.000 (VAT Not paid)	<b>Lying</b>	at sales office

## CONTACT

<b>Sales office</b>	De Valk Sneek	<b>Telephone</b>	+31 (0)515 42 80 30
<b>Address</b>	Zwolsmanweg 7 8606 KC Sneek NL	<b>E-mail</b>	sneek@devalk.nl

## DISCLAIMER

These particulars are given in good faith as supplied but cannot be guaranteed.



# VAN DER HEIJDEN EXCLUSIVE DELUXE 1600

## GENERAL

<b>Model</b>	VAN DER HEIJDEN EXCLUSIVE DELUXE 1600
<b>Type</b>	motor yacht
<b>LOA (m)</b>	15,92
<b>Beam (m)</b>	4,80
<b>Draft (m)</b>	0,90
<b>Air draft (m)</b>	3,80
<b>Headroom (m)</b>	2,20
<b>Year built</b>	2021
<b>Builder</b>	Van der Heijden Yachts
<b>Country</b>	The Netherlands
<b>Displacement (t)</b>	21
<b>CE norm</b>	A
<b>Hull material</b>	aluminium
<b>Hull colour</b>	brown
<b>Hull shape</b>	deep-V
<b>Superstructure material</b>	aluminium
<b>Rubbing strake</b>	stainless steel
<b>Deck material</b>	aluminium
<b>Deck finish</b>	teak
<b>Superstructure deck finish</b>	non-skid paint
<b>Cockpit deck finish</b>	teak
<b>Window frame</b>	stainless steel
<b>Window material</b>	tempered glass
<b>Deckhatch</b>	yes
<b>Portholes</b>	stainless steel 6x
<b>Radar arch</b>	non collapsible
<b>Fuel tank (litre)</b>	aluminium 3000
<b>Level indicator (fuel tank)</b>	CN
<b>Freshwater tank (litre)</b>	polyethylene 990
<b>Level indicator (freshwater)</b>	CN



# VAN DER HEIJDEN EXCLUSIVE DELUXE 1600

Blackwater tank (litre)	polyethylene 350
Level indicator (blackwater)	CN
Wheel steering	hydraulic
Inside helm position	yes

## ACCOMMODATION

Cabins	2
Berths	4
Interior	walnut
Floor	woodprint
Open cockpit	yes
Aft deck	yes
Deck saloon	yes
Saloon	yes
Headroom saloon (m)	2,20
Sliding roof	electric
Heating	diesel ducted hot air Webasto
Air-conditioning	reverse cycle airco
Dinette	yes
Sliding door to aft deck	yes
Countertop	granite
Sink	stainless steel
Cooker	induction 4 pits
Oven	Neff
Fridge	Siemens
Freezer	Siemens
Hot water system	220V + engine
Water pressure system	electrical
Dishwasher	Siemens
Owners cabin	French bed
Bed length (m)	2,10



# VAN DER HEIJDEN EXCLUSIVE DELUXE 1600

Wardrobe	drawers and shelves
Bathroom	en suite
Toilet	en suite
Toilet system	electric
Wash basin	in the bathroom
Shower	en suite
Guest cabin 1	twin single
Bed length (m)	2,10
Wardrobe	shelves
Bathroom	en suite
Toilet	en suite
Toilet system	electric
Wash basin	in the bathroom
Shower	shared
Washing machine/dryer combi	AEG

## MACHINERY

No of engines	2
Make	FPT
Type	N67
HP	550
kW	404.80
Fuel	diesel
Maximum speed (kn)	26
Cruising speed (kn)	20
Range (nm)	1000
Engine hours	300
Engine cooling system	freshwater heat exchanger
Drive	shaft
Shaft seal	yes
Engine controls	electrical



# VAN DER HEIJDEN EXCLUSIVE DELUXE 1600

<b>Gearbox</b>	hydraulic
<b>Bowthruster</b>	electric
<b>Sternthruster</b>	electric
<b>Exhaust</b>	watercooled
<b>Thrust bearing</b>	yes
<b>Propeller type</b>	fixed
<b>Propeller shaft material</b>	stainless steel
<b>Shaft lubrication</b>	water
<b>Electric bilge pump</b>	yes
<b>Bilge alarm</b>	yes
<b>Electrical installation</b>	24V / 230V
<b>Generator</b>	silent separator Cummins
<b>Running hours generator</b>	151
<b>Batteries</b>	yes
<b>Start battery</b>	yes
<b>Service battery</b>	yes
<b>Generator battery</b>	yes
<b>Windlass battery</b>	yes
<b>Battery monitor</b>	Victron
<b>Battery charger/inverter</b>	Victron Quattro 24V/4000
<b>Diode battery combiners</b>	yes
<b>Shorepower</b>	with cable

## NAVIGATION

<b>Electric compass</b>	Simrad
<b>Log</b>	yes
<b>VHF</b>	Simrad HS100
<b>Autopilot</b>	Simrad
<b>Rudder angle indicator</b>	yes
<b>Radar/GPS/plotter</b>	Simrad NSS12 EVO 3S
<b>AIS transceiver</b>	Simrad



Navigation lights	yes
Searchlight	yes
Extra info	Joystick piloting
Extra info	RMC remote control

## EQUIPMENT

Cockpit cushions	yes
Cockpit table	yes
Cockpit chairs	yes
Bathing platform	yes
Boarding ladder	stainless steel
Transom door	yes
Deck shower	yes
Anchor	yes
Windlass	electrical
Sea railing	stainless steel
Grab rail (superstructure)	stainless steel
Railing side opening gates	yes
Wiper	3x
Horn	electric
Fenders	yes
Mooring lines	yes
TV	Samsung on electric raising device
Radio	yes
Sub-woofer	Rockford
Cockpit speakers	Rockford
Speakers in salon	Rockford



# VAN DER HEIJDEN EXCLUSIVE DELUXE 1600



# VAN DER HEIJDEN EXCLUSIVE DELUXE 1600



# VAN DER HEIJDEN EXCLUSIVE DELUXE 1600



# VAN DER HEIJDEN EXCLUSIVE DELUXE 1600



# VAN DER HEIJDEN EXCLUSIVE DELUXE 1600

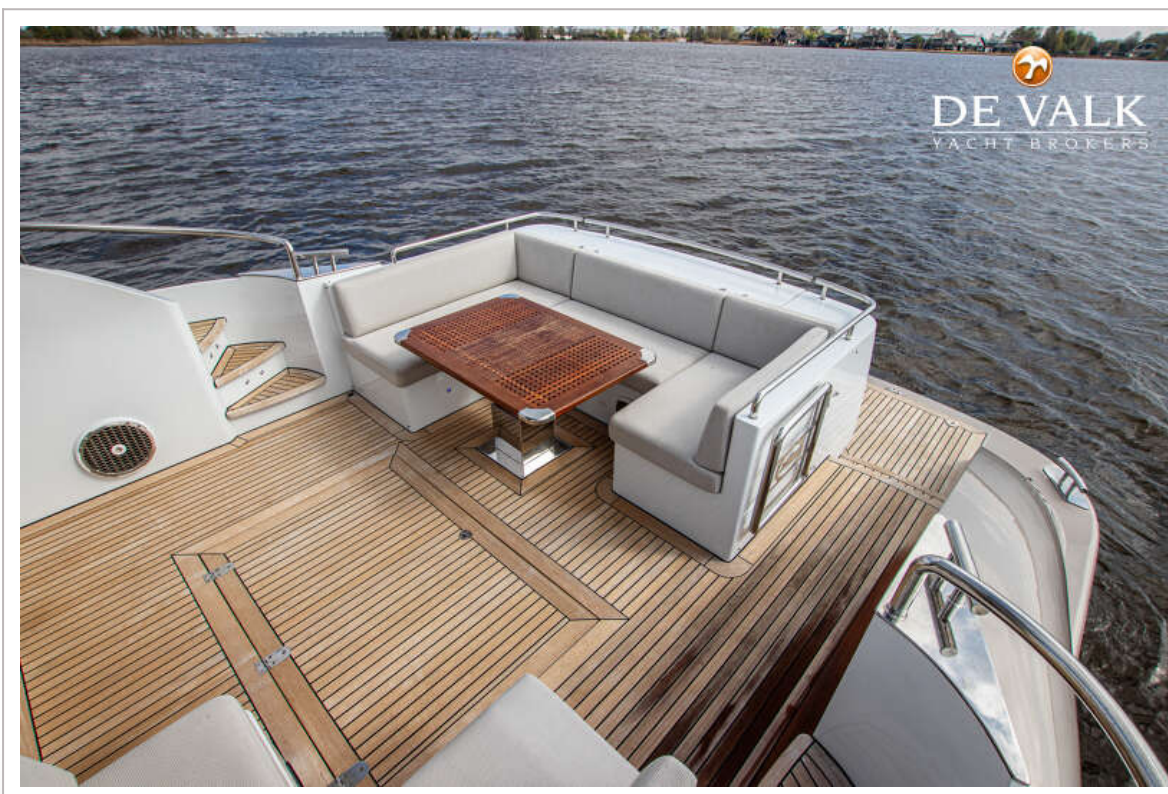
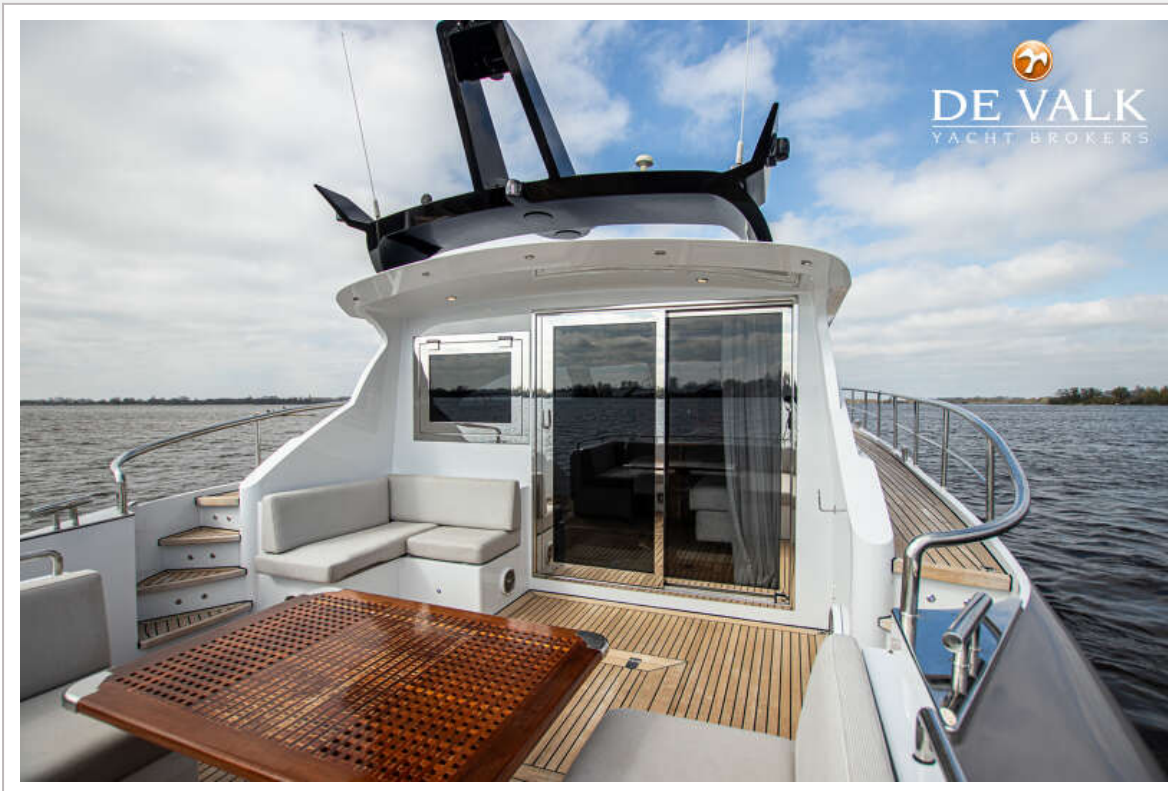


# VAN DER HEIJDEN EXCLUSIVE DELUXE 1600





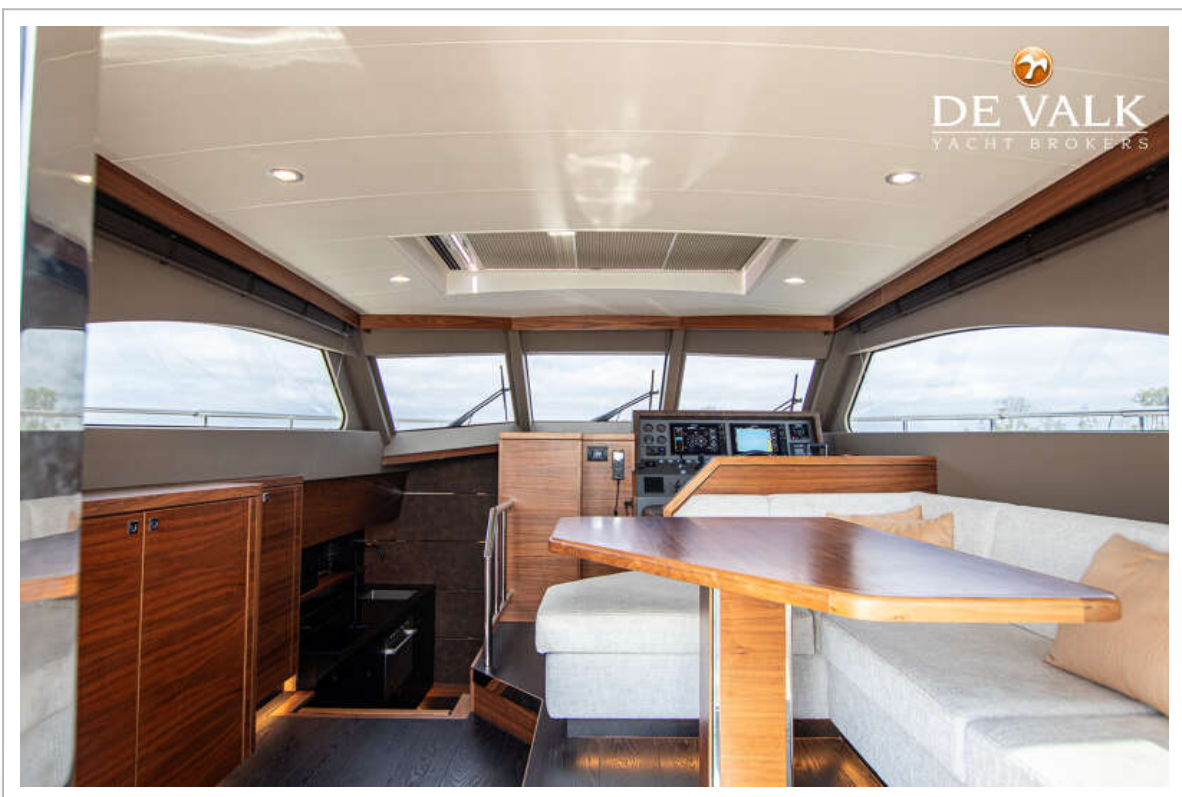
# VAN DER HEIJDEN EXCLUSIVE DELUXE 1600



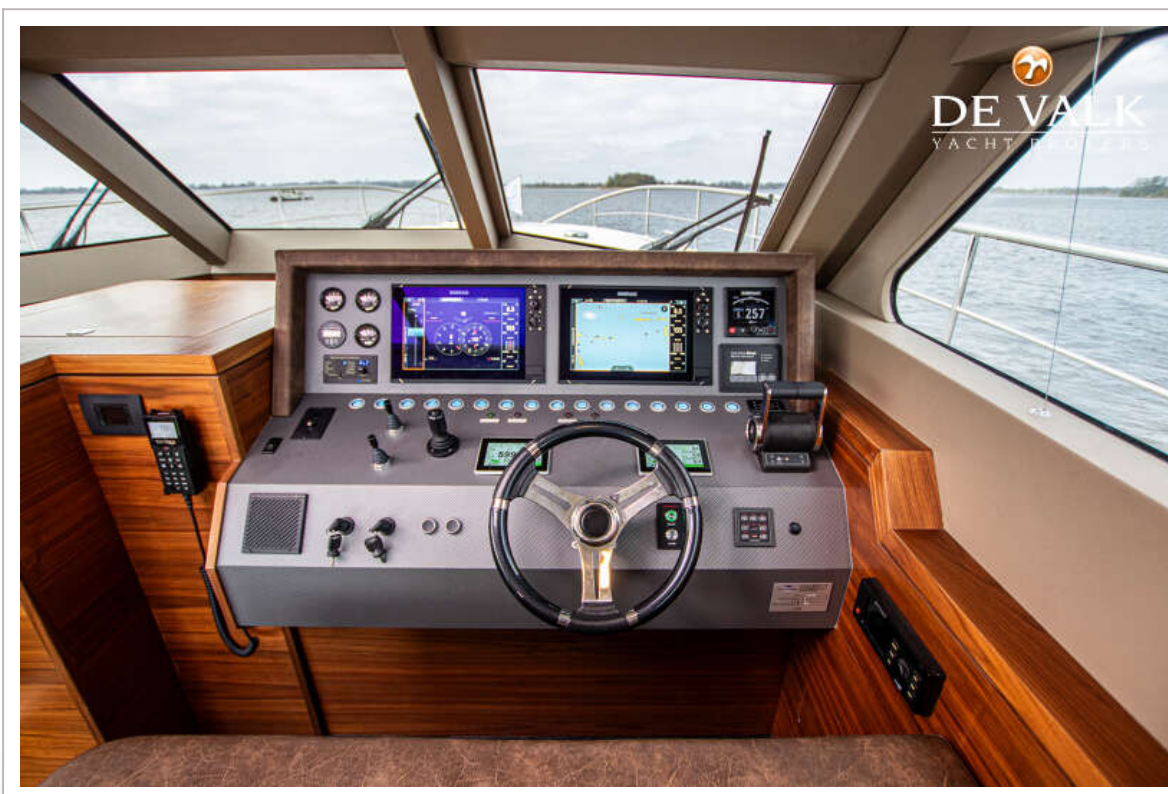
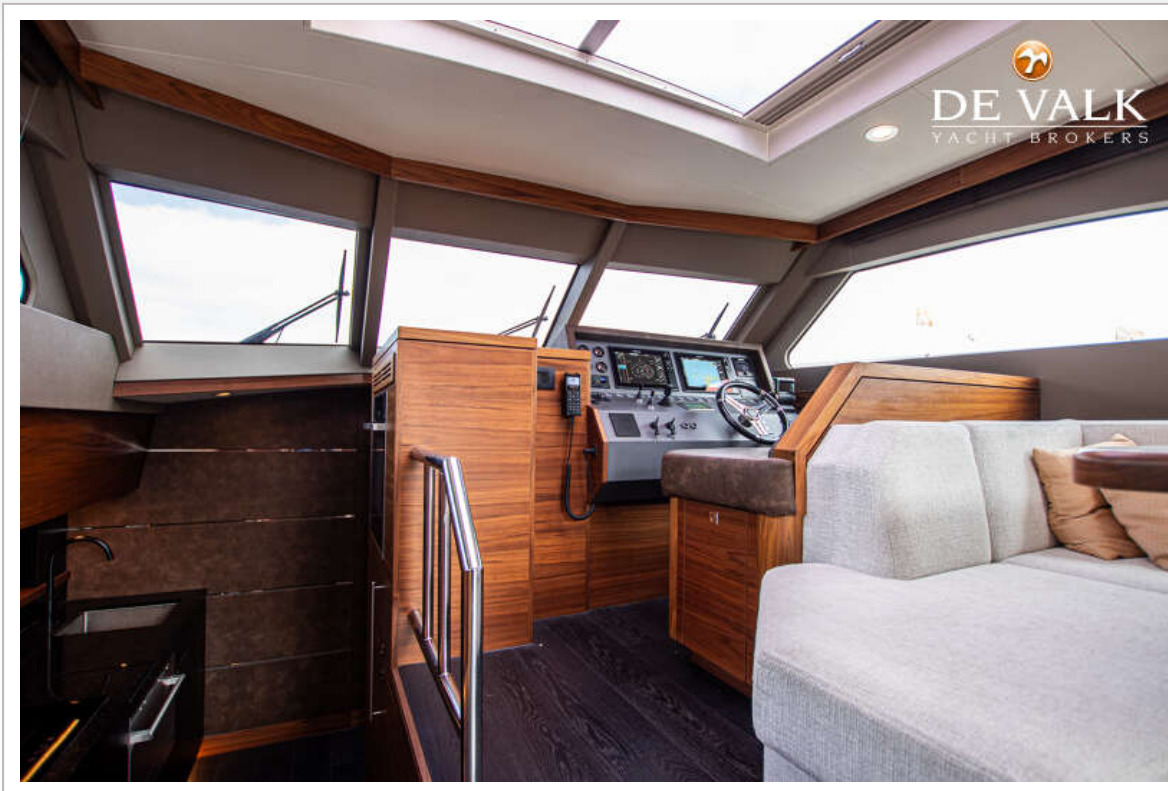
# VAN DER HEIJDEN EXCLUSIVE DELUXE 1600

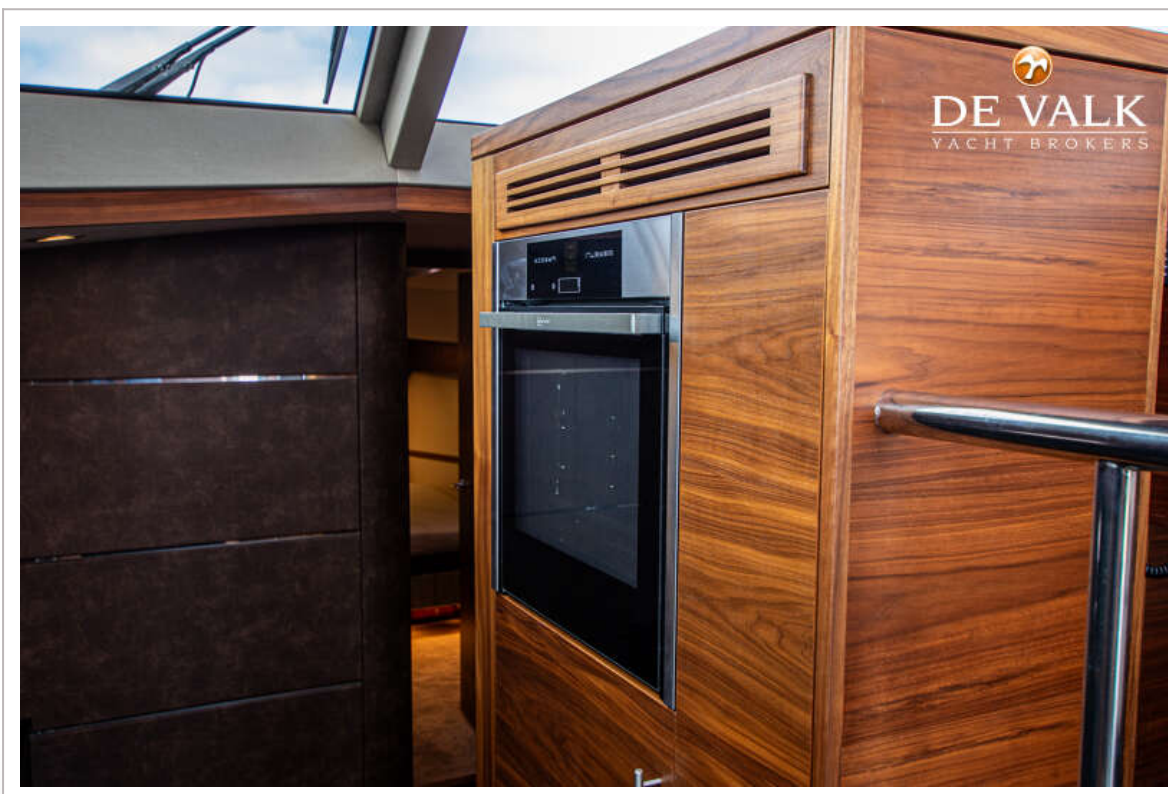


# VAN DER HEIJDEN EXCLUSIVE DELUXE 1600

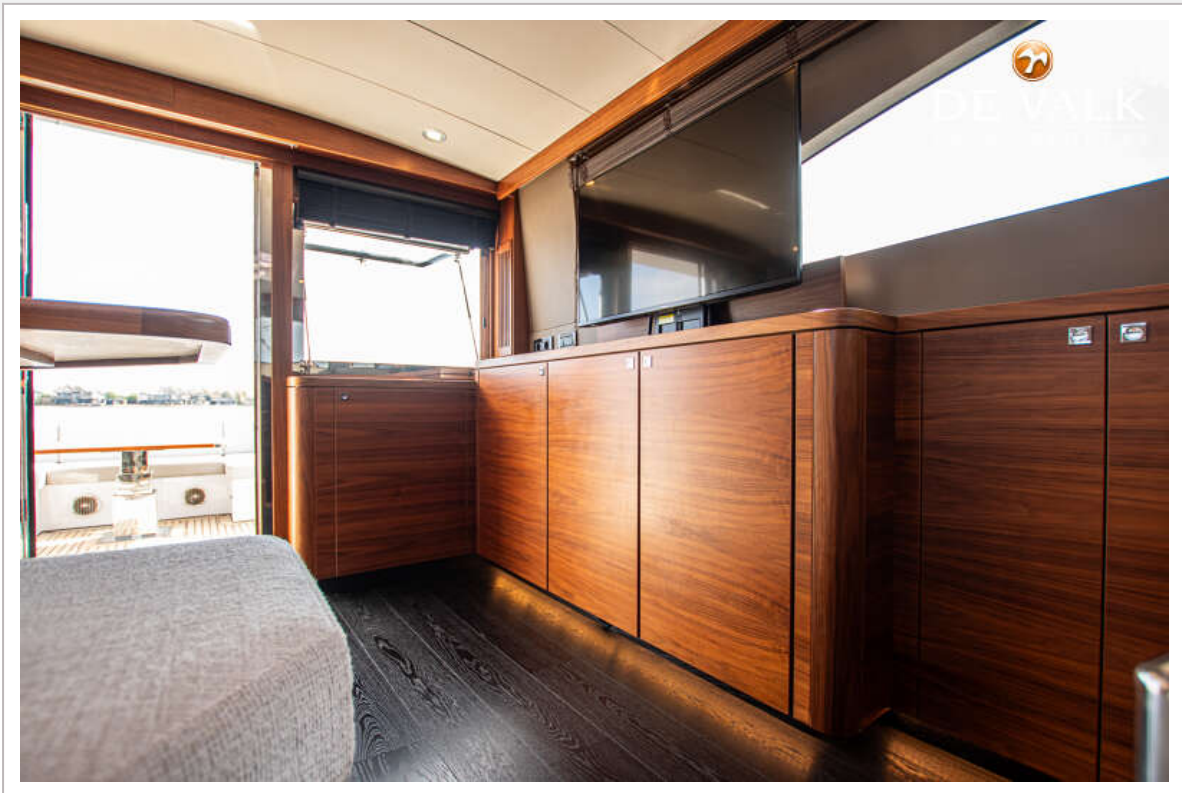


# VAN DER HEIJDEN EXCLUSIVE DELUXE 1600





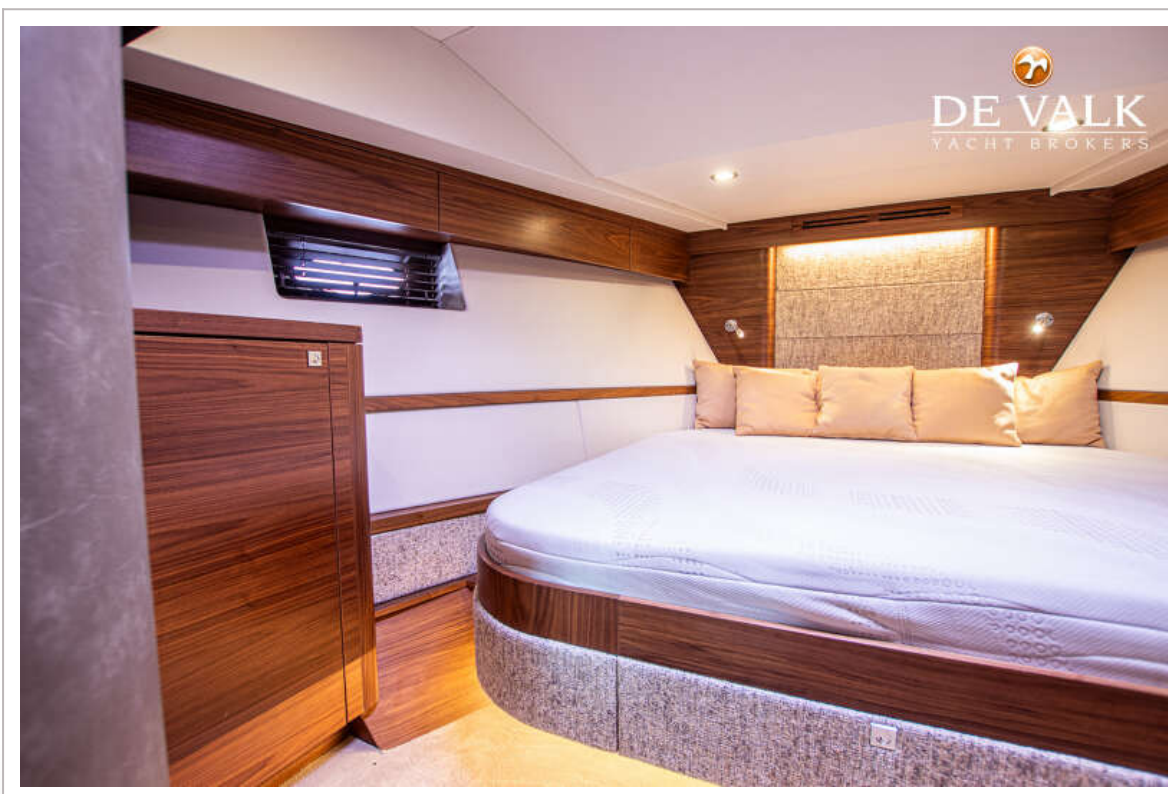
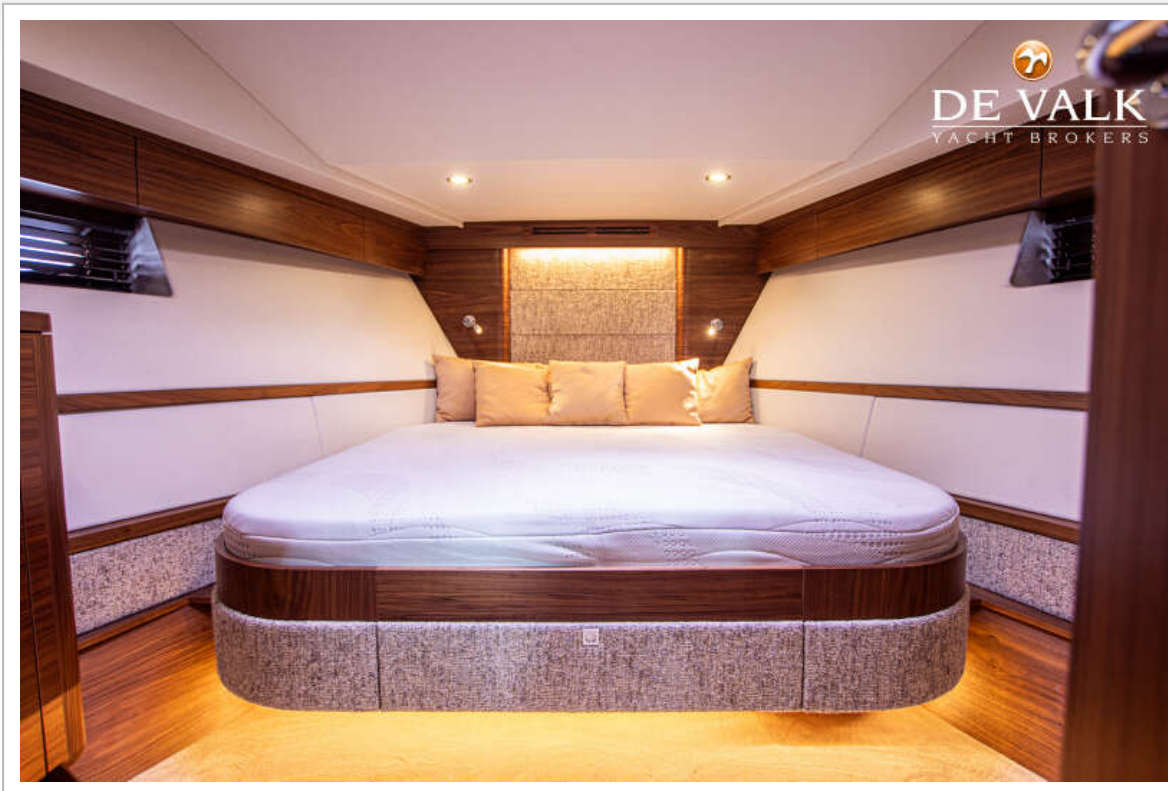
# VAN DER HEIJDEN EXCLUSIVE DELUXE 1600

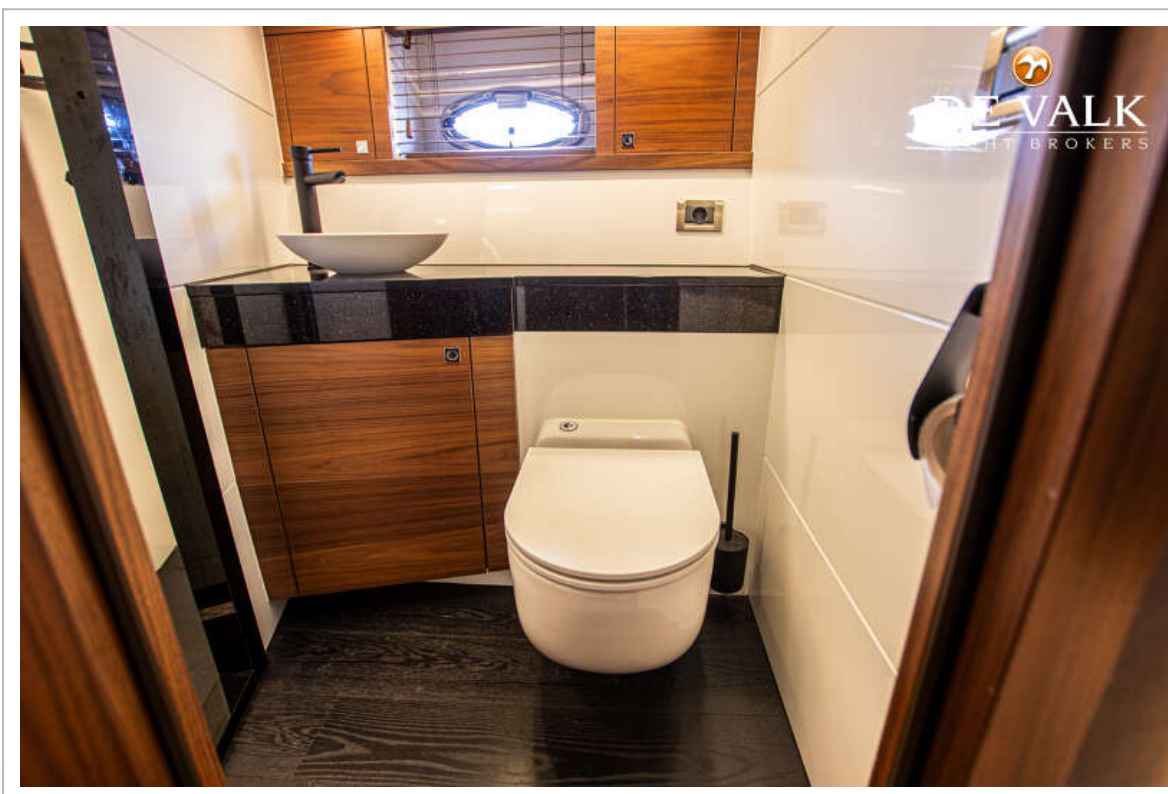


# VAN DER HEIJDEN EXCLUSIVE DELUXE 1600

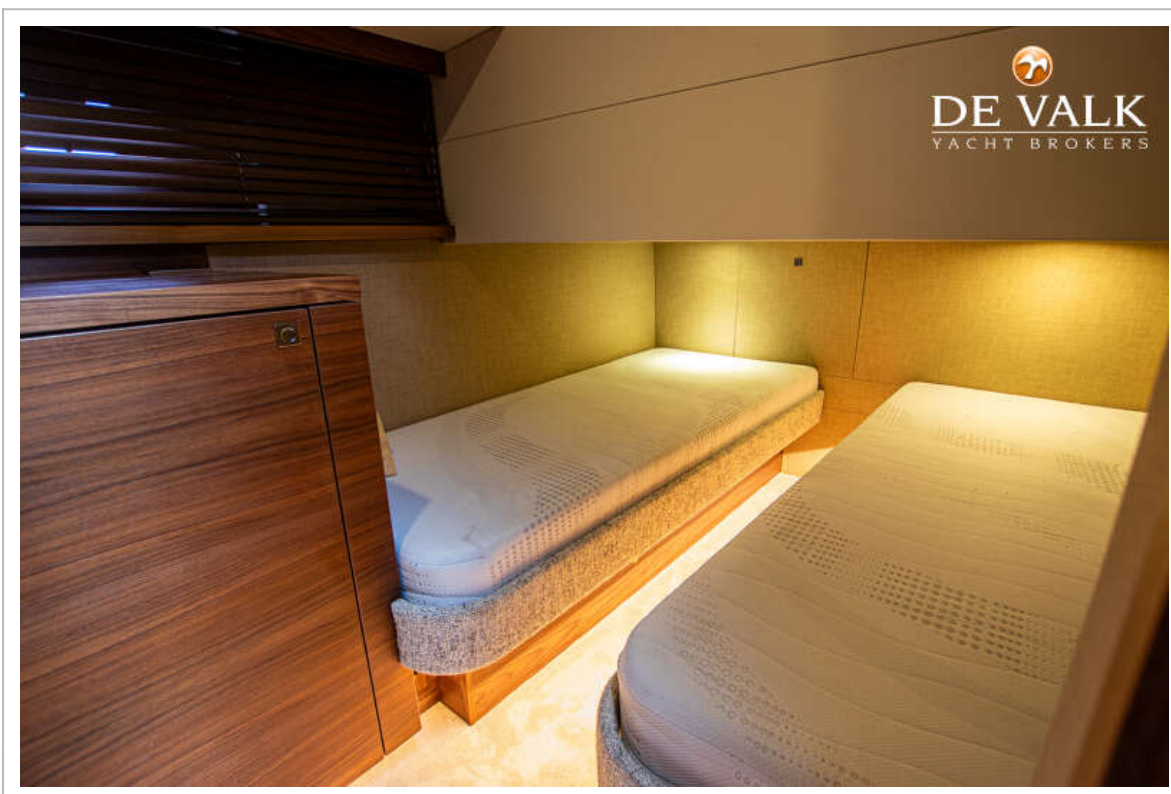


# VAN DER HEIJDEN EXCLUSIVE DELUXE 1600

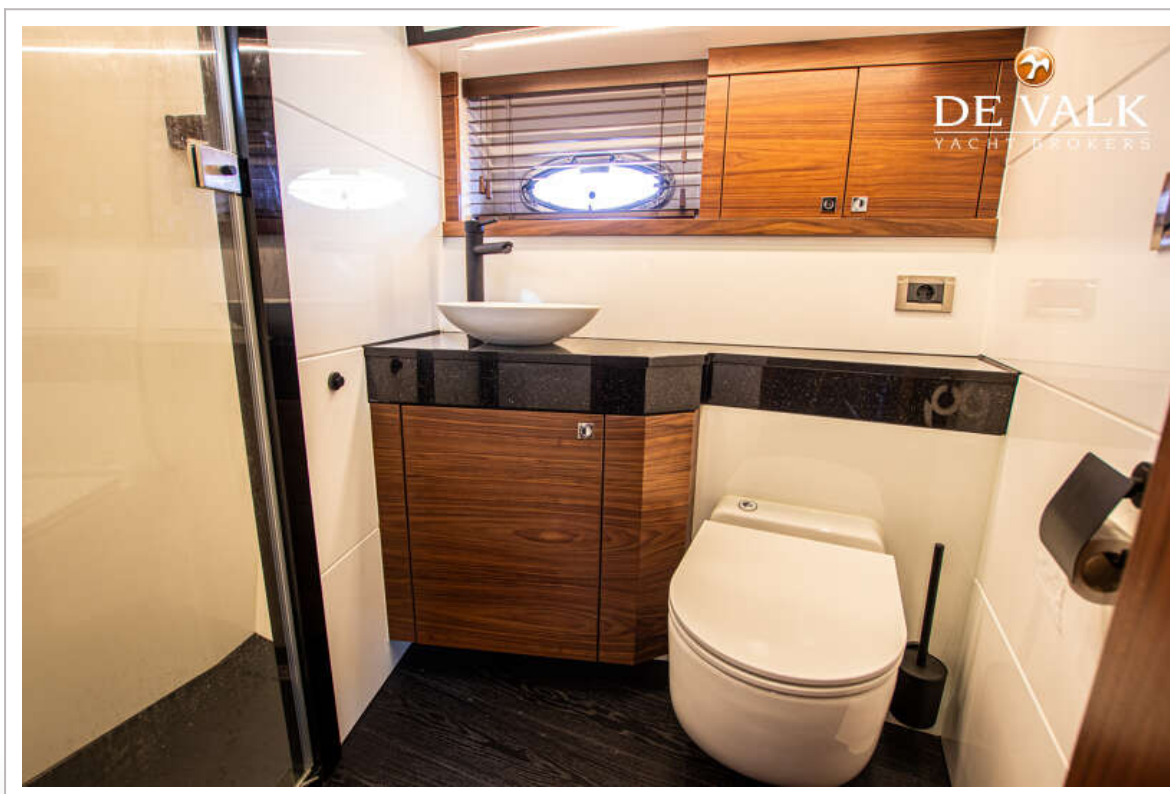
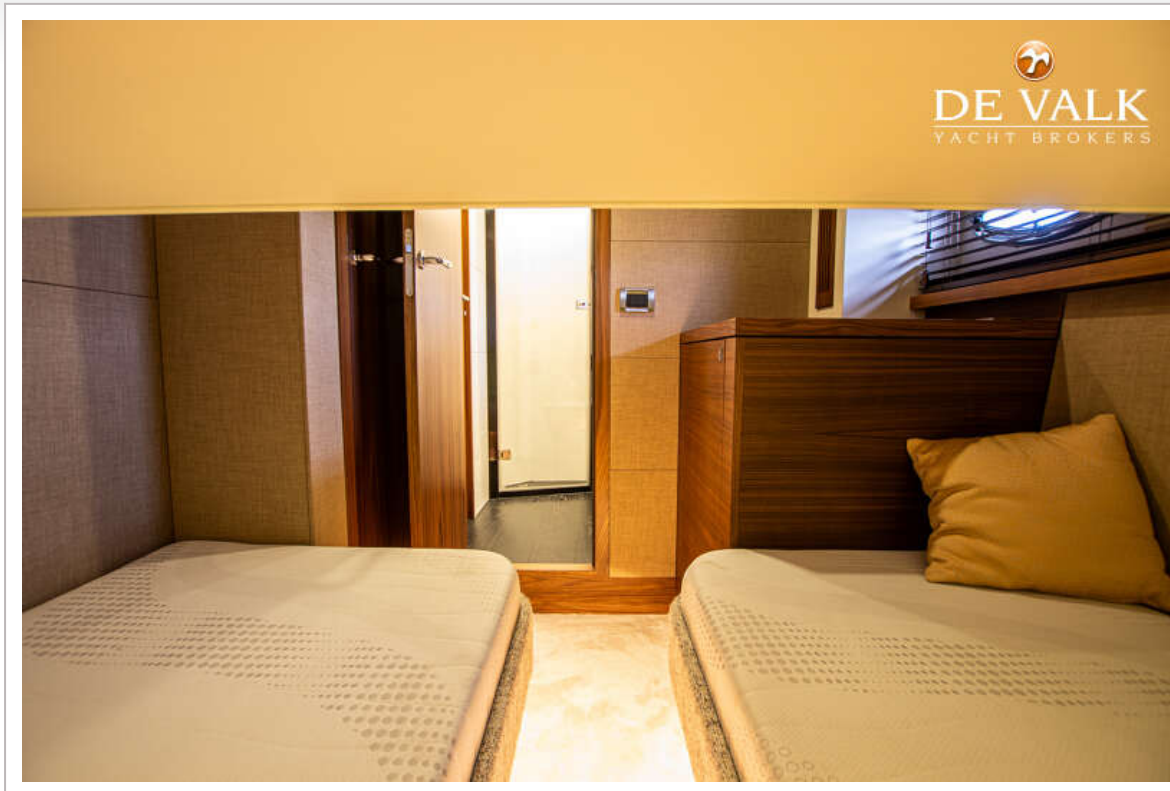




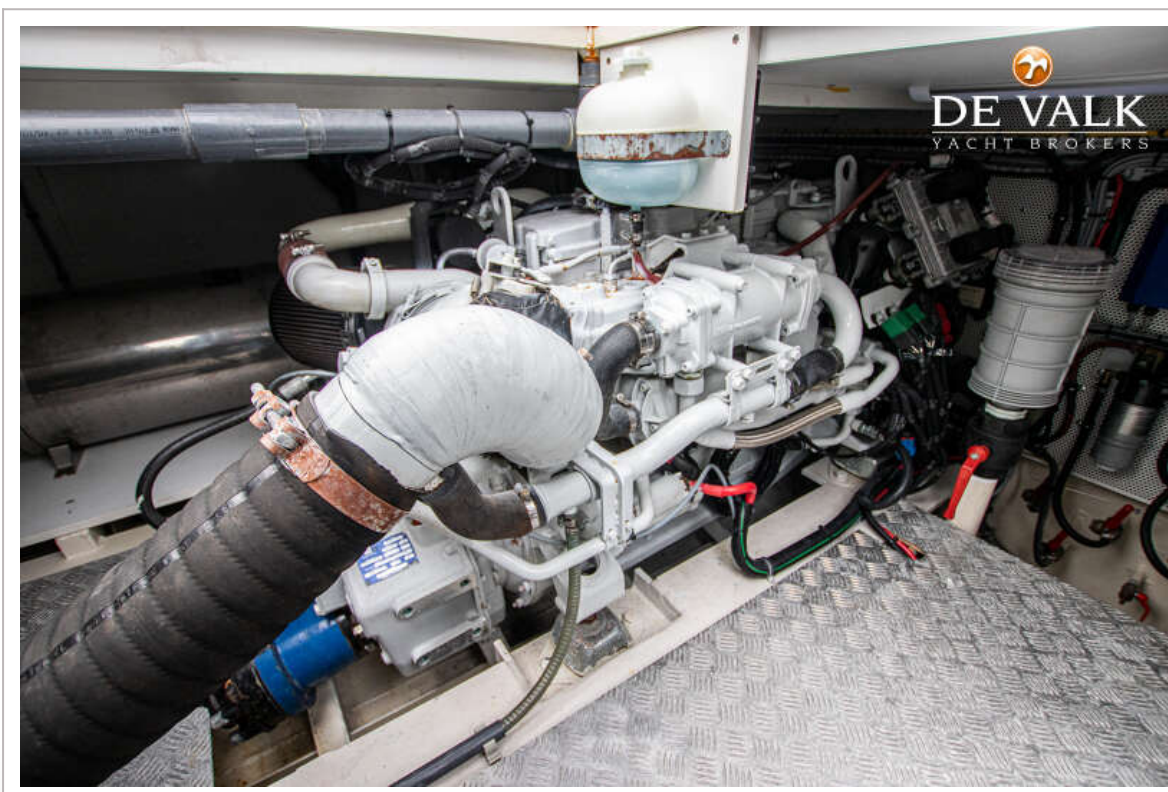
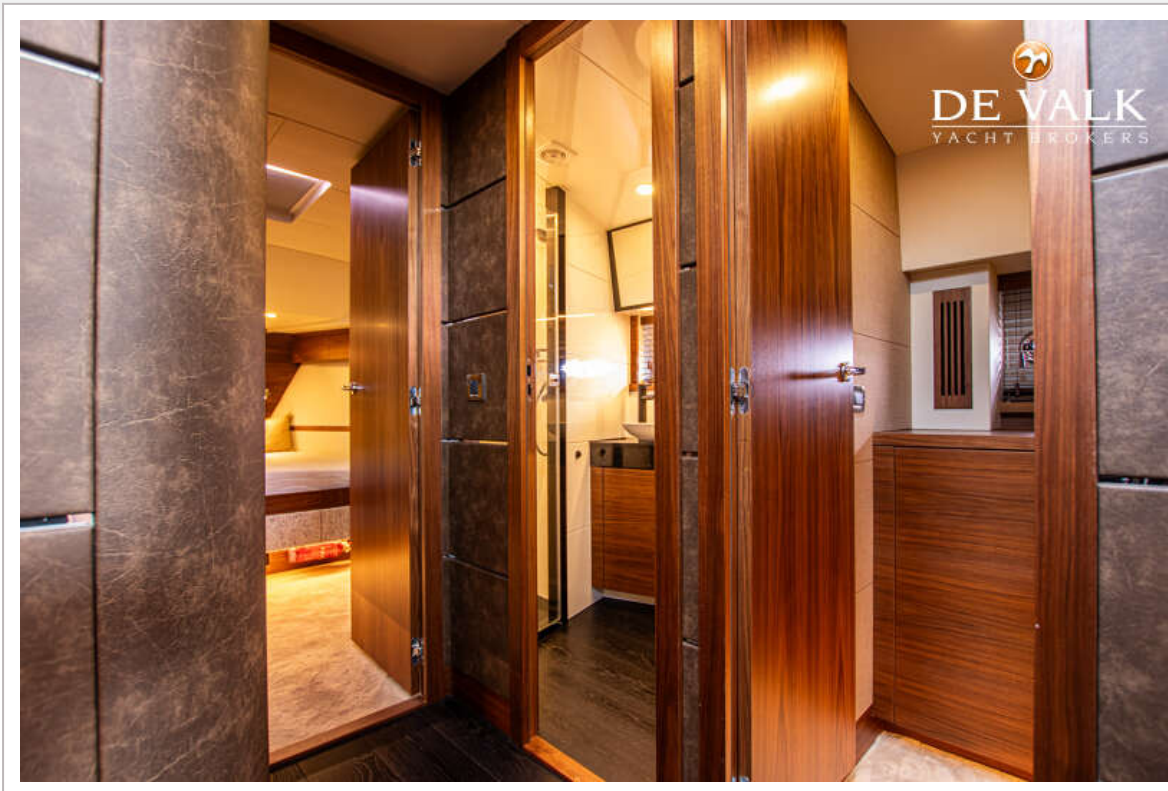
# VAN DER HEIJDEN EXCLUSIVE DELUXE 1600



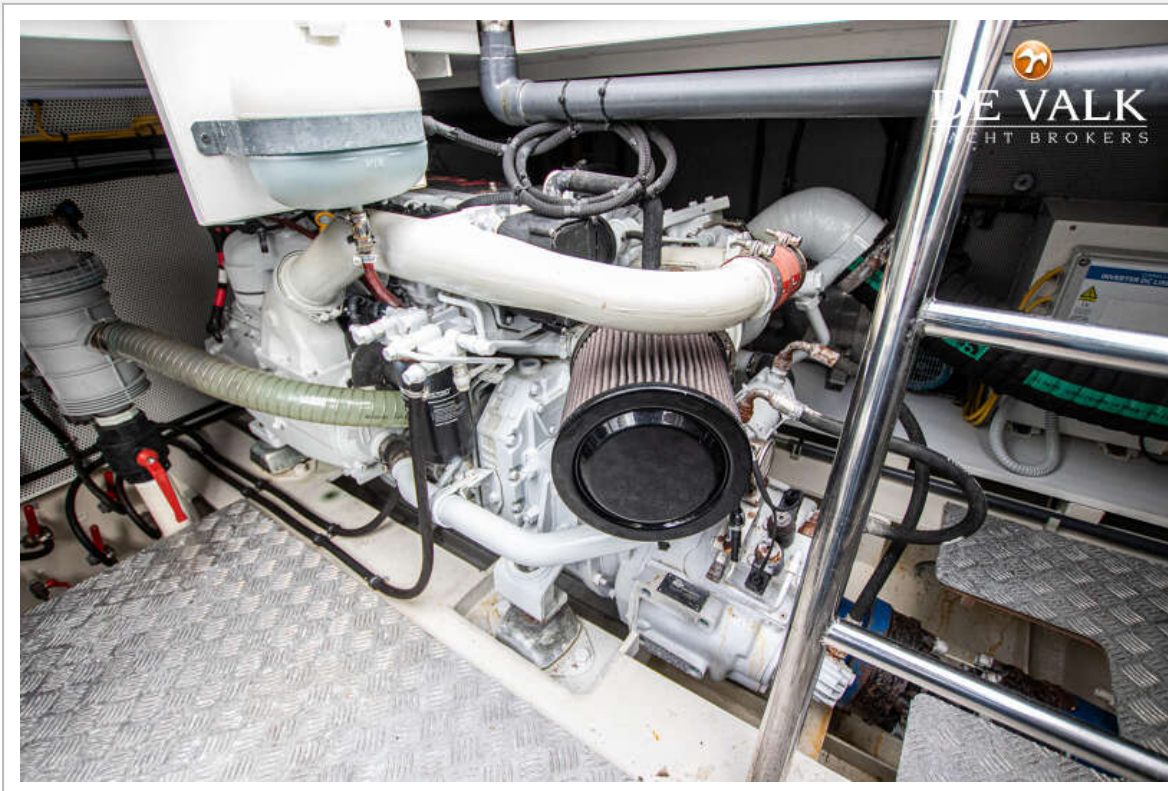
# VAN DER HEIJDEN EXCLUSIVE DELUXE 1600



# VAN DER HEIJDEN EXCLUSIVE DELUXE 1600



# VAN DER HEIJDEN EXCLUSIVE DELUXE 1600



# VAN DER HEIJDEN EXCLUSIVE DELUXE 1600

