



DE VALK  
YACHT BROKERS

## SPARKMAN & STEPHENS 75



DE VALK  
YACHT BROKERS

## BROKER'S COMMENTS

“Alondra”, designed by the renowned Sparkman & Stephens (#1598) was built in 1961 in Bremen Germany by Burmester. Between 2019 and 2023 she has been beautifully restored to her former glory (by the current owner) in Barcelona by Marcelo Penna Yachts under the management of Benoit Duval. The restoration has been documented in great detail with photos, together with a final survey available. A stunning classic yacht with ample accommodation for six guests with en-suite bathrooms and three crew members in their own quarters. On deck there is a large dining area which can also be enclosed.

*Zoë Ann Clark*

## SPECIFICATIONS

<b>Dimensions</b>	23.20 x 5.53 x 2.90 (m)	<b>Builder</b>	Burmester
<b>Built</b>	1961	<b>Cabins</b>	3
<b>Material</b>	Steel	<b>Berths</b>	6
<b>Engine(s)</b>	1 x Detroit GM 6-71 diesel	<b>Hp/Kw</b>	220.00 (hp), 161.92 (kw)
<b>Asking price</b>	€ 1.800.000 (VAT Exempt)	<b>Lying</b>	contact Almeria

## CONTACT

<b>Sales office</b>	De Valk Almeria	<b>Telephone</b>	+34 950 497 825
<b>Address</b>	Puerto Deportivo, Darsena de la Batea 42 04711 Almerimar ES	<b>E-mail</b>	almeria@devalk.nl

## DISCLAIMER

These particulars are given in good faith as supplied but cannot be guaranteed.



## GENERAL

Model	SPARKMAN & STEPHENS 75
Type	sailing yacht
LOA (m)	23,20
Beam (m)	5,53
Draft (m)	2,90
Air draft (m)	27,00
Headroom (m)	2,10
Year built	1961
Launched	1961
Builder	Burmester
Country	Germany
Designer	Sparkman & Stephens
Displacement (t)	66
Ballast (tonnes)	11,5
Gross tonnage	51.04
CE norm	NA
Hull material	steel
Hull colour	white
Hull thickness (mm)	5mm above sea level gradually increasing up to 10mm at the keel.
Keel type	long keel
Superstructure material	steel Newly built 2023 by original design by Fibranautica.
Deck material	steel
Deck finish	teak
Cockpit deck finish	teak
Antifouling (year)	2024
Dorades	Re-chromed stainless steel
Window frame	stainless steel Re-chromed
Window material	glass
Deckhatch	yes
Portholes	stainless steel Re-chromed



Insulation	glasswool
Fuel tank (litre)	steel 2000
Level indicator (fuel tank)	yes
Freshwater tank (litre)	polyethylene 400
Blackwater tank (litre)	polyethylene 400
Blackwater tank extraction	pump
Greywater tank (litre)	polyethylene 400
Wheel steering	hydraulic New 2023
Outside helm position	hydraulic
More info on hull	Please ask for full details on the resoration works carried out.
More info on paintwork	Painted artisanally and directly applied after primer on steel.
Extra info	Brand new Toplicht brass lighting appliances at the cockpit
Extra info	All deck equipment artisanally chromed
Extra info	Air compressor at Lazarette for 8 inflatable fenders and toys.

## ACCOMMODATION

Cabins	3
Berths	6
Crew cabin	1
Crew berths	3
Interior	teak
Floor	teak
Pilot house/deck saloon	yes
Headroom saloon (m)	2,10
Heating	electric 220V Reverse cycle air-conditioning
Air-conditioning	reverse cycle airco Climma
Navigation center	yes
Chart table	yes
Galley	yes
Countertop	wood
Sink	corian Brand-Franke



Cooker	induction
Microwave	yes
Fridge	425l New compressor
Freezer	130l New compressor
Wine cooler	Liebherr
Hot water system	220V Boiler 2 x 150l
Water pressure system	electrical
Dishwasher	Miele
Kettle	yes
Hot water tap	yes
Coffee maker	Jura
Crockery	yes
Owners cabin	twin single 2,4m headroom
Wardrobe	hanging/drawers/shelves
Bathroom	yes
Toilet	en suite
Toilet system	electric
Wash basin	in the bathroom
Shower	en suite
Guest cabin 1	twin single
Wardrobe	hanging/drawers/shelves
Bathroom	yes
Toilet	en suite
Toilet system	electric
Wash basin	in the bathroom
Shower	en suite
Guest cabin 2	bunk bed
Wardrobe	hanging/drawers/shelves
Bathroom	yes
Toilet	en suite
Toilet system	electric
Wash basin	in the bathroom



Shower	en suite
Crew cabin(s)	yes
Toilet (crew)	yes
Toilet system	electric
Wash basin	yes
Washing machine	Miele (Lazarette)

## MACHINERY

No of engines	1
Make	Detroit GM
Type	6-71
HP	220
kW	161.92
Fuel	diesel
Year installed	1961
Year of overhaul	2021 (Complete rebuild by Hamofa, Belgium)
Maximum speed (kn)	12
Cruising speed (kn)	10.5
Consumption (l/hr)	20
Range (nm)	1000
Engine hours	340
Engine cooling system	freshwater heat exchanger
Drive	shaft
Gearbox	hydraulic
Bowthruster	electric Maxpower 24V
Exhaust	watercooled Refurbished 2023
Propeller type	fixed Sonica custom made
Propeller blades	4
Propeller shaft material	stainless steel
Shaft lubrication	water
Electric bilge pump	yes



<b>Bilge alarm</b>	yes
<b>Electrical installation</b>	New
<b>Generator</b>	wet exhaust New 20Kw - Kohler model 20 EF 02ZD
<b>Running hours generator</b>	960
<b>Batteries</b>	14
<b>Start battery</b>	2 x Tudor 120 Ah AGM 2025
<b>Service battery</b>	4 x Tudor 200 Ah AGM 2025
<b>Generator battery</b>	Tudor 120 Ah AGM 2025 (connected with starter batteries)
<b>Bowthruster battery</b>	8 shared with windlass 2025
<b>Windlass battery</b>	8 shared with bowthruster 2025
<b>Battery charger/inverter</b>	Mastervolt (220v/100v/24v)
<b>Shorepower</b>	with cable 230V
<b>Watermaker</b>	New Selmar Pacific 150 200l/hour
<b>Extra info</b>	Engine room with new sound insulation

## NAVIGATION

<b>Compass</b>	yes
<b>Multi control display</b>	yes
<b>Depth sounder</b>	New Raymarine i70
<b>Log</b>	New Raymarine i70
<b>Windset</b>	New Raymarine i70
<b>VHF</b>	New Ray90 (loudspeaker) VHF Duplexor for AIS
<b>Autopilot</b>	Solonoide Evolution with p70Rs, ACU-300, EV1 + p70s control unit
<b>Wind vane steering install.</b>	yes
<b>Radar</b>	New Chirp Quantum Q24D 18" with Doppler technology
<b>GPS</b>	New Raymarine i70
<b>Plotter/GPS</b>	New Raymarine Axiom 12 Maps MSD Platinum+ XL3 Zone 31P Iberia
<b>Wifi antenna</b>	New wifi and router installed. 4G dual SIM 3 in 1. 8 port switch
<b>Electronic chart(s)</b>	yes
<b>AIS transceiver</b>	Raymarine AIS700 (Class B) New



EPIRB	yes
Personal MOB transmitter	yes
Camera	2 x CAM 210 IP Installed at mast and engine room New
Navigation lights	yes
Searchlight	yes
Extra info	All electronics controlled by C-Zone

## EQUIPMENT

Cockpit cover	yes
Sun awning	yes
Cockpit cushions	New cockpit and sunbathing cushions and chaise lounge
Cockpit table	8 persons
Cockpit chairs	yes
Boarding ladder	wood
Gangway	yes
Deck shower	Hot & cold
Anchor	CQR Plough 180lbs
Anchor chain	New 120m chain
Windlass	electrical New Lofrans Ercole
Deck wash	yes
Dinghy	inflatable ABJet 350XP 20hrs teak made V-shape dinghy fittings aft deck
Deck crane	yes
Sea railing	wire
Grab rail (superstructure)	teak
Railing side opening gates	yes
Pushpit	yes
Pulpit	yes
Life raft	container Duarry
Life raft (pers)	8
Lifejackets	yes





Clearview window	yes
Binocular	yes
Radar reflector	Echomax Chirp Quantum Q24D
Fenders	yes
Mooring lines	yes
Spare parts	yes
Tools	yes
Alarm system	yes
TV	Bang & Olufsen
Satellite	Antenna/Internet
iPod connection	yes
Cockpit speakers	Bosé sound system. Denon music streamer with Spotify connection.
Speakers in salon	Bang & Olufsen
Clock - barometer	yes
Fire extinguisher	yes
Auto extinguisher system	yes
Extra info	Flammkraft Grill in cockpit
Extra info	Electric scooter and electric bike. Fishing equipment
Extra info	100 meters of floating mooring lines for Mediterranean.

## RIGGING

Rigging	ketch-cutter
Standing rigging	wire Fastmast 2023
Brand mast	Sitka spruce masts refurbished by Antoni Vidal
Material mast	wood
Mainsail	Mastersail 2023-160m2
Mainsail cover	New Lazybag
Mizzen	New - Mastersails
Mizzen sailcover	New Lazybag
Genoa	New Mastersail -180m2



Genoa furler	yes
Reefing System	slabreefing
Genoa sheetwinches	New - Anderson
Multifunctional winches	2 x Anderson 52 3 x Anderson 40 2xBarient 36 2xIdeal 2xBarie
Extra info	1 x Ideal electrical winch for mooring (currently not mounted)



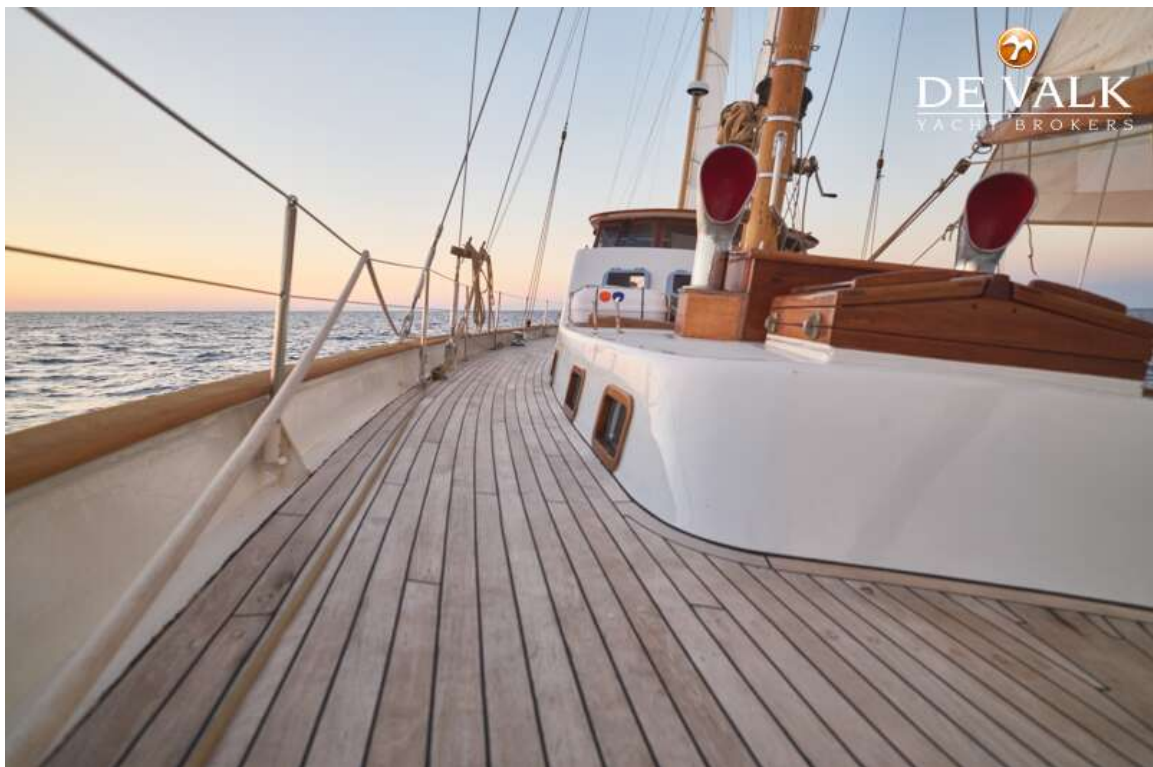
# SPARKMAN & STEPHENS 75





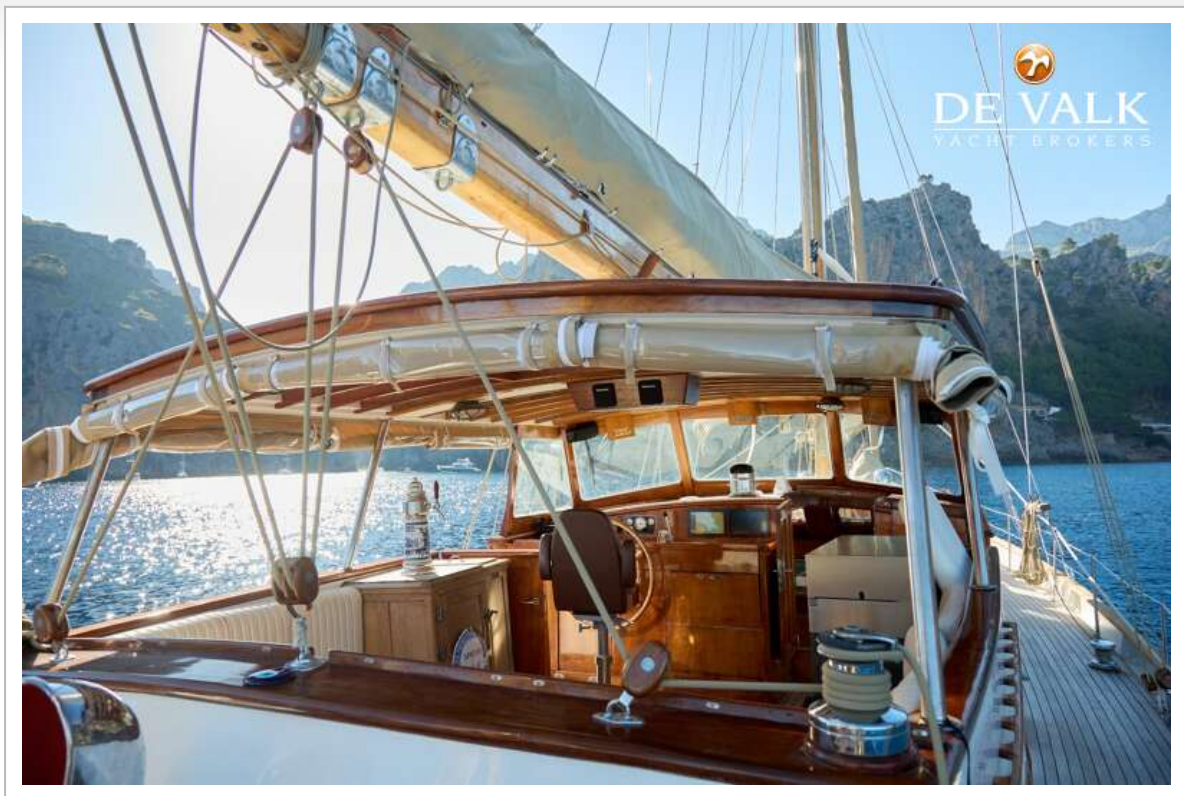


# SPARKMAN & STEPHENS 75





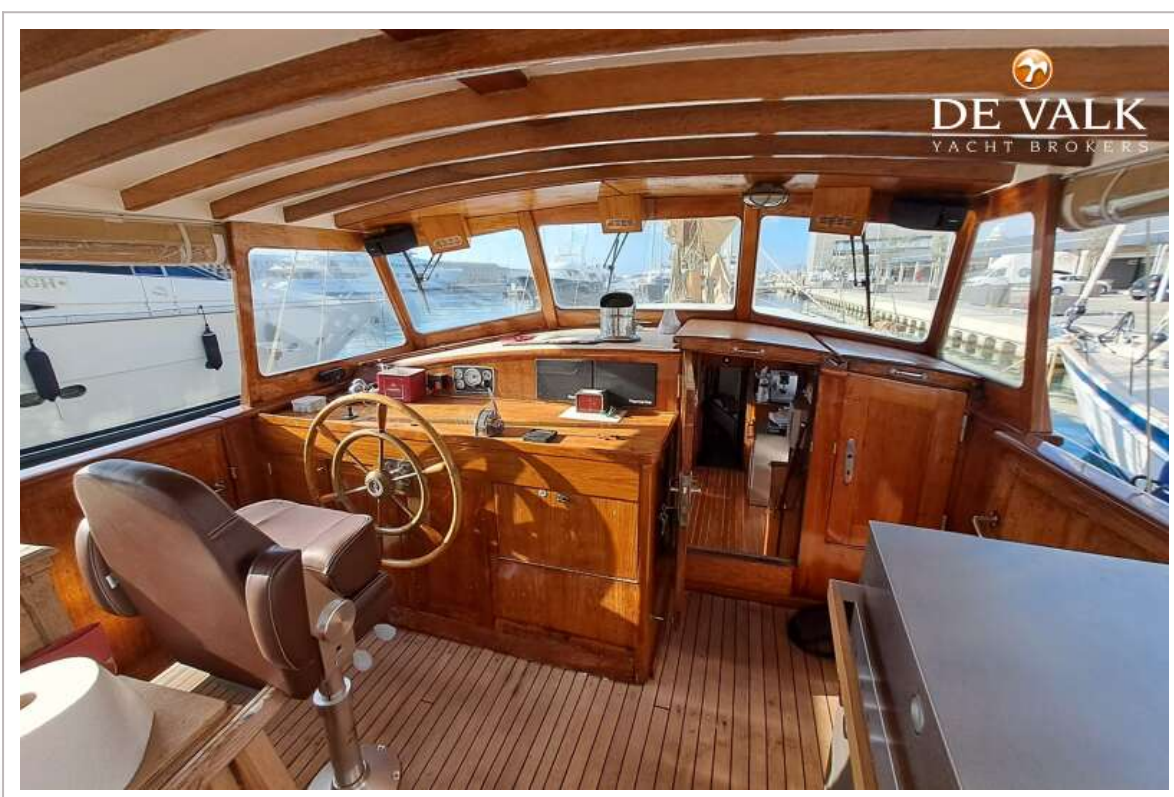
# SPARKMAN & STEPHENS 75





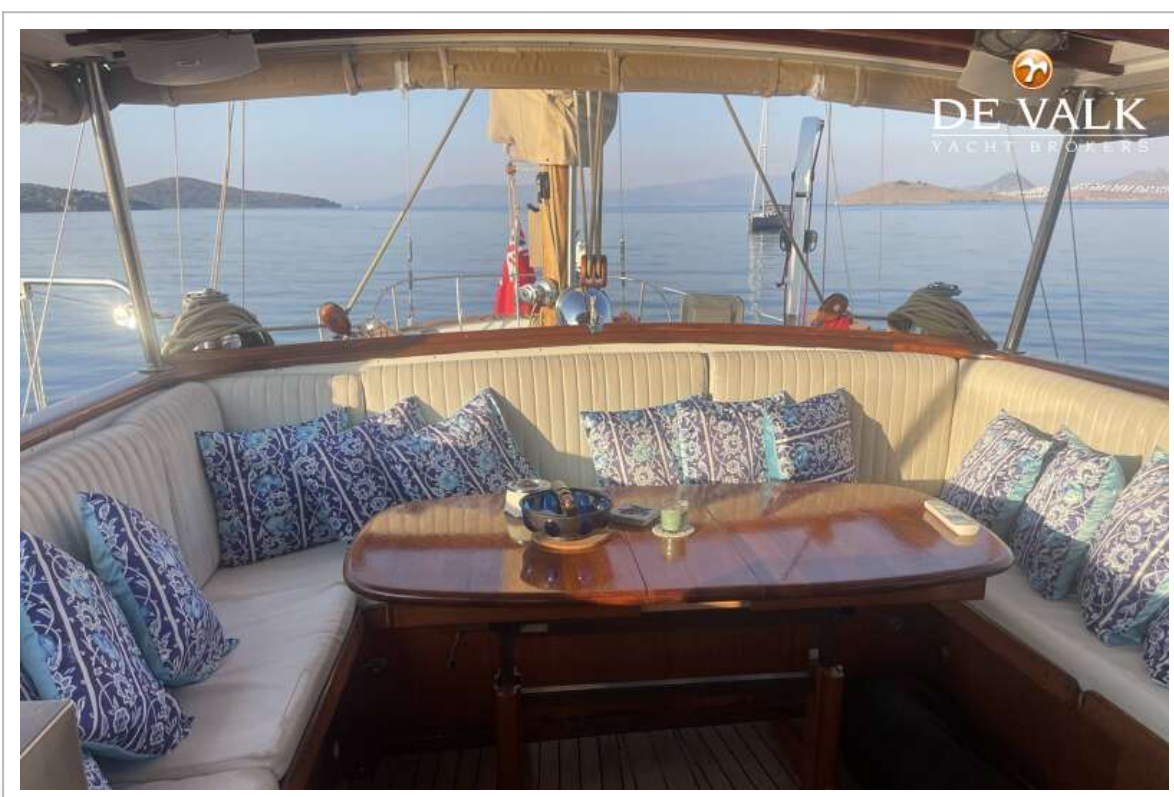


# SPARKMAN & STEPHENS 75



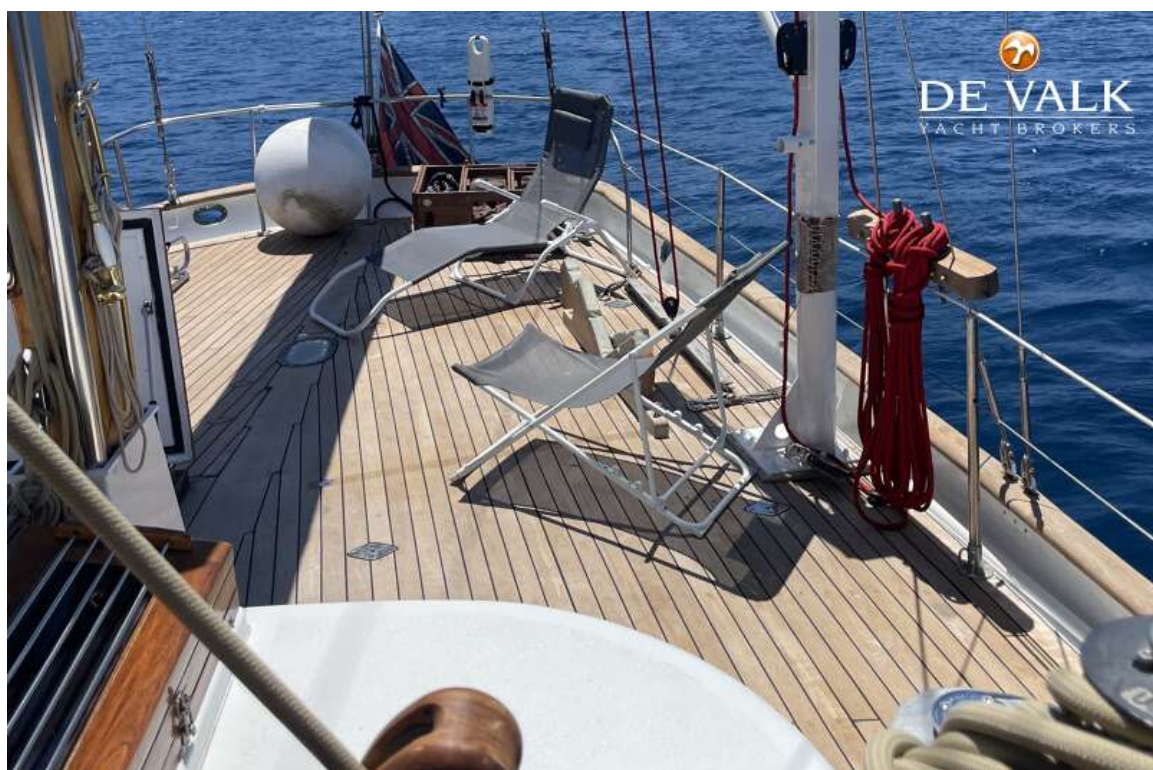


# SPARKMAN & STEPHENS 75



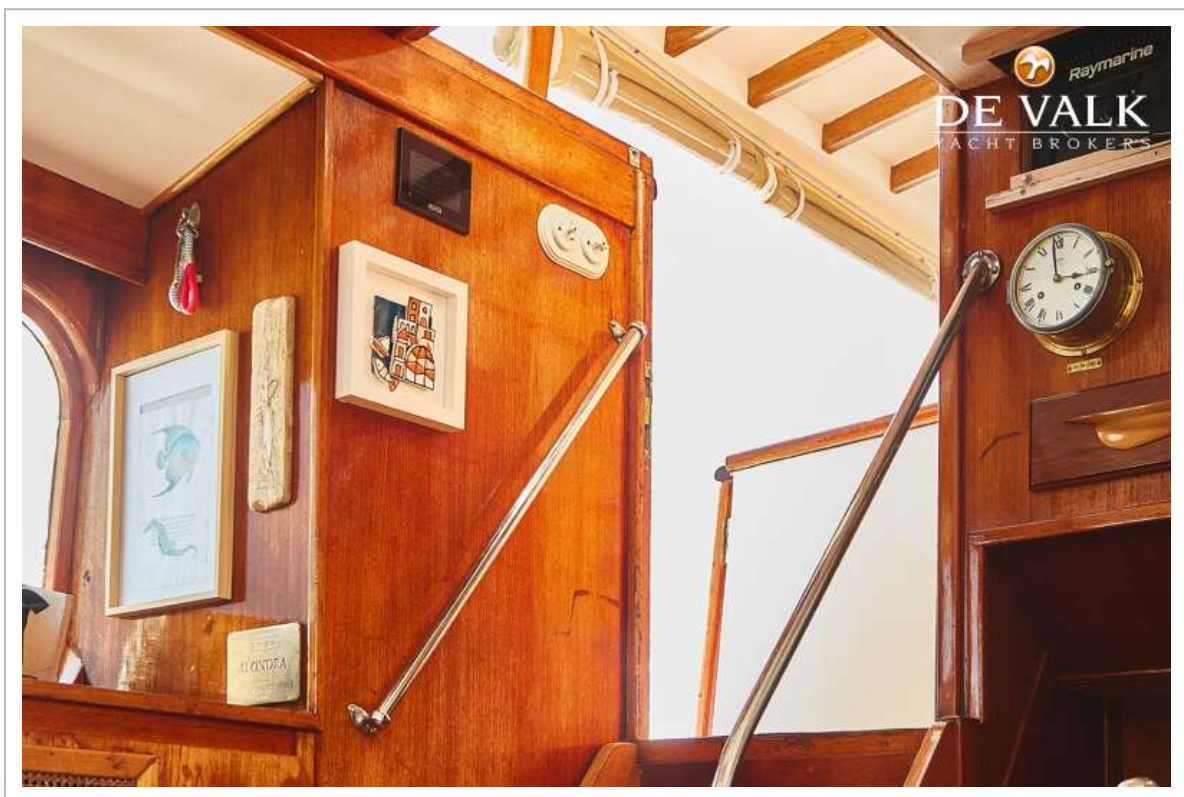


# SPARKMAN & STEPHENS 75











# SPARKMAN & STEPHENS 75

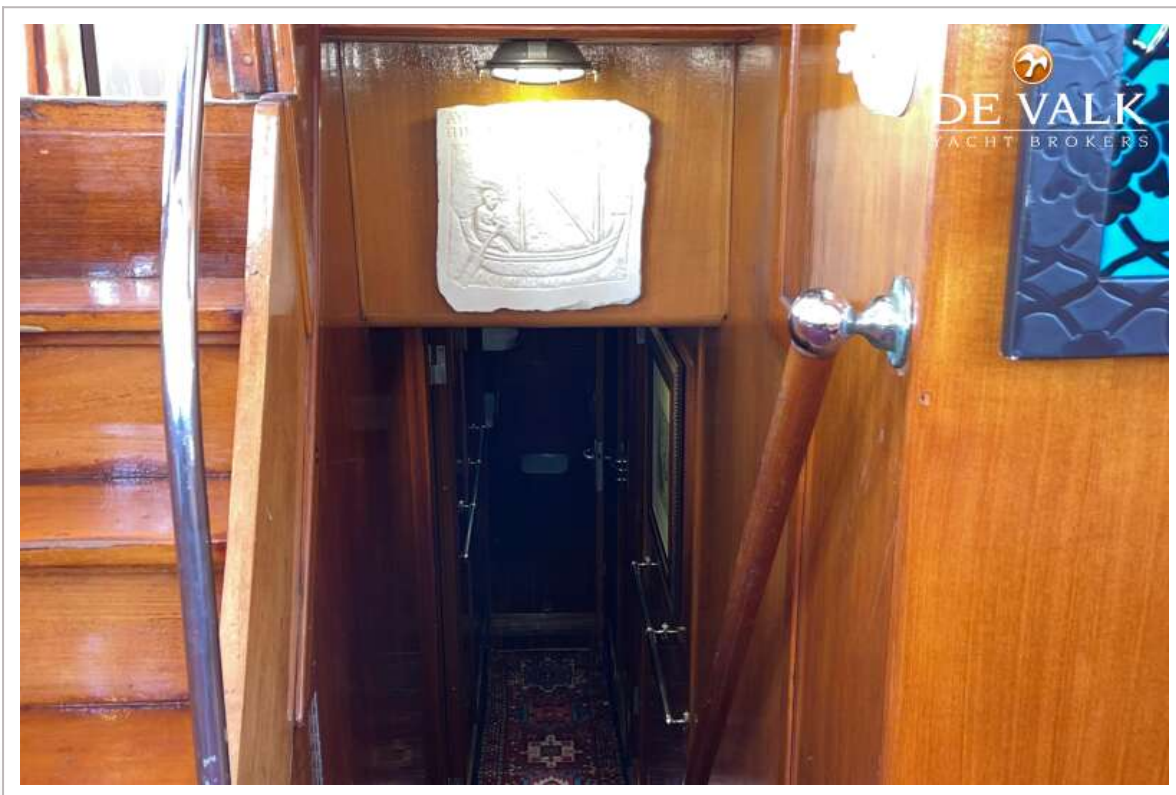




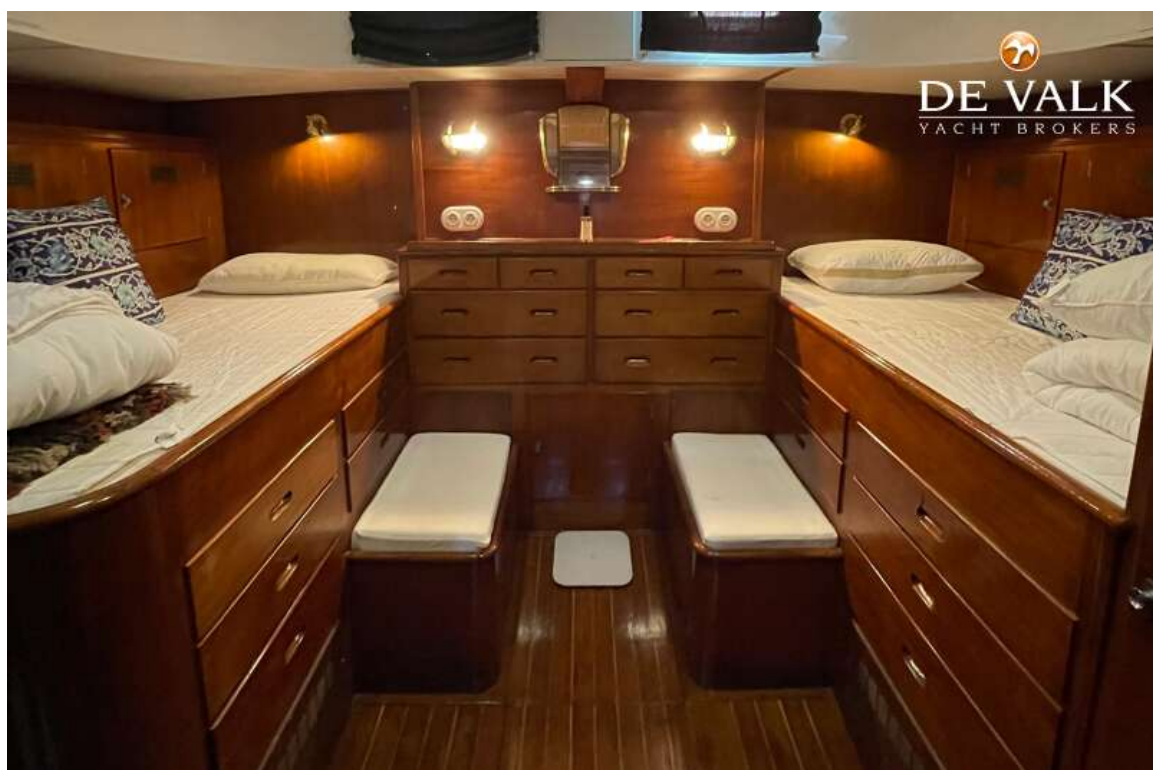
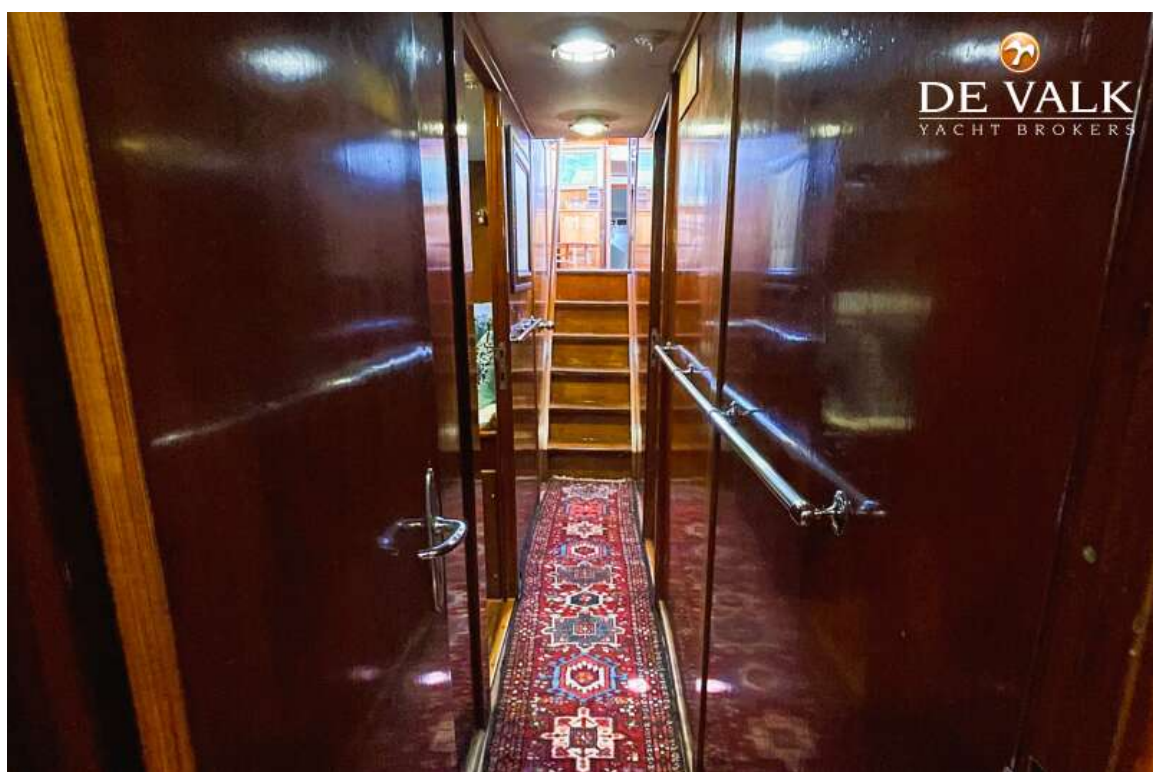


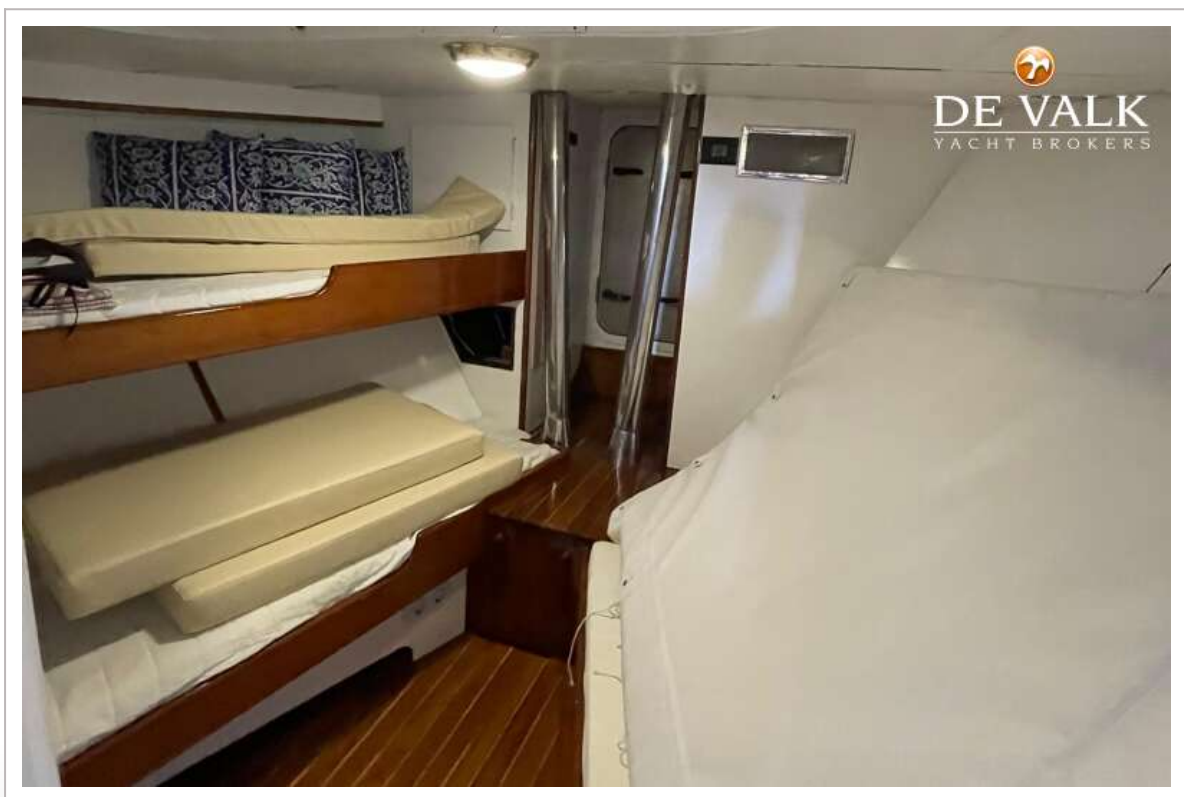






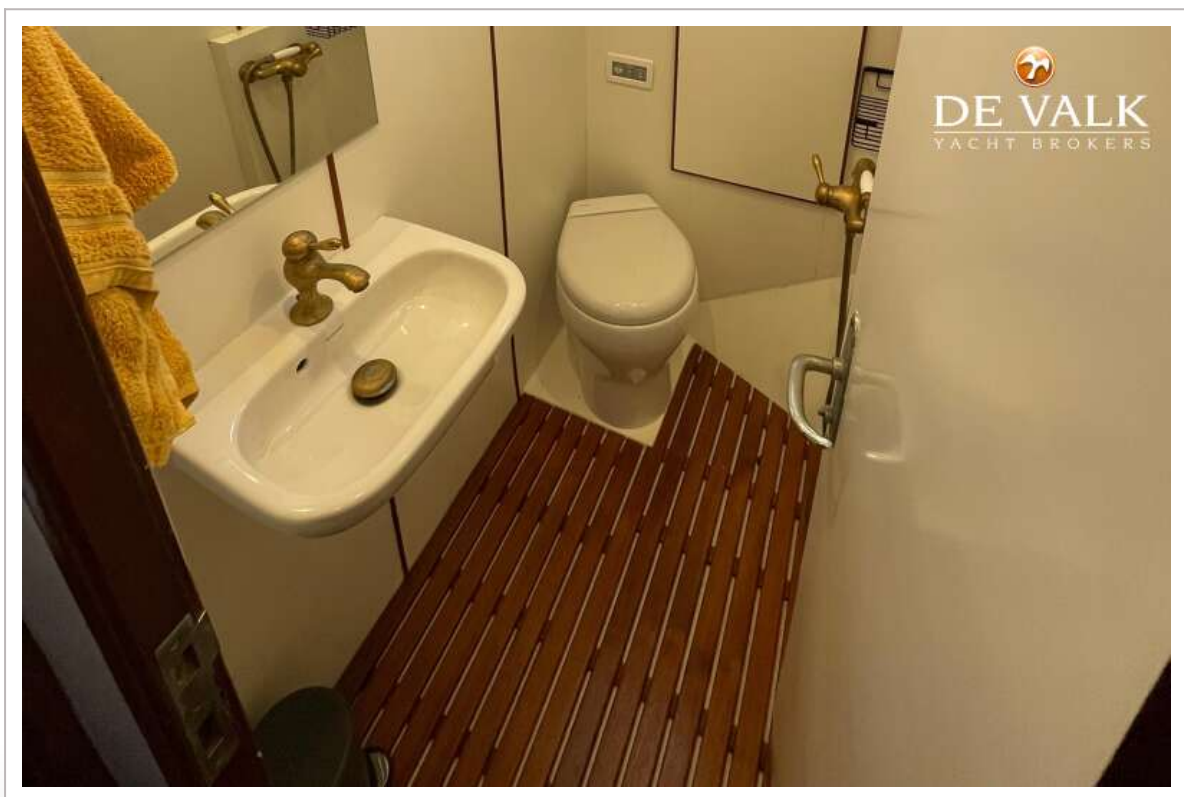
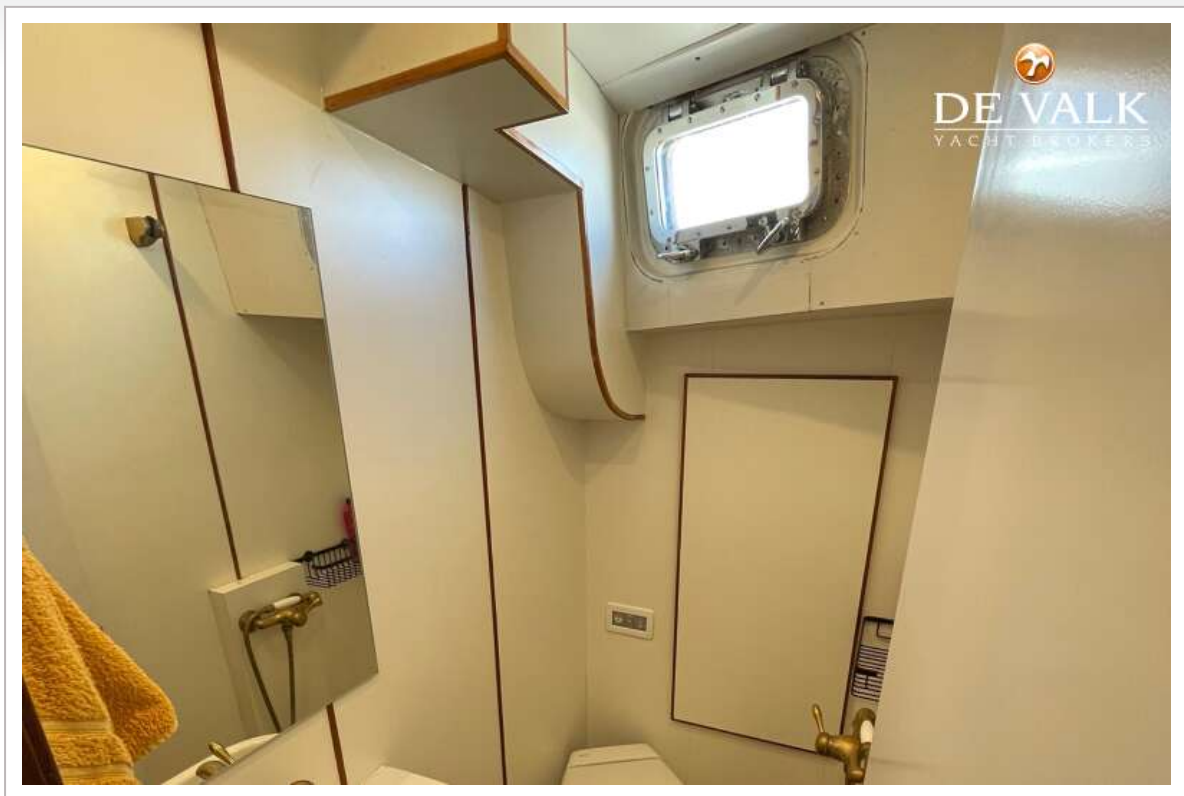












# SPARKMAN & STEPHENS 75

