



KEMPERS KETCH 24M

KEMPERS KETCH 24M

BROKER'S COMMENTS

This beautiful Kempers Ketch 24M canoe stern really justifies the term motor sailor. Giving the best of both worlds, she offers you a quiet and comfortable cruise, whether sailing or cruising steadily on her powerful engine, keeping her movements to a minimum thanks to her Koopnautic stabilizers. This Kempers ketch 24 M underwent major refit in 2024. She is absolute worth a visit.

Eric Lamers

SPECIFICATIONS

Dimensions	24.00 x 6.00 x 2.70 (m)	Builder	KEMPERS (ARCO Yachts NL)
Built	1985	Cabins	4
Material	Steel	Berths	9
Engine(s)	1 x MAN D2542 12 CYL diesel	Hp/Kw	320.00 (hp), 235.20 (kw)
Asking price	€ 749.900 (VAT Paid)	Lying	contact Antibes

CONTACT

Sales office	De Valk Antibes	Telephone	+33 492 91 0202
Address	2, Avenue de Verdun 06600 Antibes FR	E-mail	antibes@devalk.nl

DISCLAIMER

These particulars are given in good faith as supplied but cannot be guaranteed.



KEMPERS KETCH 24M

GENERAL

Model	KEMPERS KETCH 24M
Type	motorsailer
LOA (m)	24,00
Beam (m)	6,00
Draft (m)	2,70
Headroom (m)	2,00
Year built	1985
Builder	KEMPERS (ARCO Yachts NL)
Country	The Netherlands
Displacement (t)	90
Hull material	steel
Hull colour	white
Hull thickness (mm)	8
Keel type	long keel
Superstructure material	aluminium
Deck material	teak
Deck finish	teak
Cockpit deck finish	teak
Antifouling (year)	2024
Dorades	yes
Fuel tank (litre)	15500 L
Level indicator (fuel tank)	yes
Freshwater tank (litre)	3500 L
Level indicator (freshwater)	yes
Blackwater tank (litre)	yes
Greywater tank (litre)	yes
Inside helm position	yes
Outside helm position	yes

ACCOMMODATION



KEMPERS KETCH 24M

Cabins	4
Berths	9
Crew cabin	yes
Crew berths	2
Interior	teak
Deck saloon	yes
Pilot house/deck saloon	The upper pilothouse doubles as a comfortable lounge or office
Saloon	The full-beam lower salon offers exceptional space,
Headroom saloon (m)	2
Air-conditioning	New Reversible Air conditioning 70.000 BTU inverter system
Navigation center	yes
Chart table	yes
Aft Cabin	yes
Dinette	Spacious aft dining area with new upholstery and teak boards
Opening door to cockpit	yes
Galley	Upgraded appliances (oven, microwave, coffee machine etc...)
Countertop	yes
Oven	yes
Microwave	yes
Fridge	Fridge connection to AC converter
Freezer	140L
Hot water system	New hot water boiler
Water pressure system	electrical
Dishwasher	yes
Hot water tap	yes
Ice maker	New icemaker at the bridge
Coffee maker	New bean coffee machine
Owners cabin	Double bed, new tv, with new mattress, en-suite facilities.
Bed length (m)	2
Bathroom	yes
Toilet	yes
Toilet system	yes



KEMPERS KETCH 24M

Wash basin	yes
Shower	yes
Guest cabin 1	One double bed and one single bed, en-suite facilities.
Bed length (m)	2
Wardrobe	drawers and shelves
Toilet system	electric
Guest cabin 3	Twin beds, en-suite facilities
Wardrobe	drawers and shelves
Bathroom	yes
Toilet	yes
Toilet system	electric
Crew cabin(s)	Two bed + bathroom
Washing machine	yes

MACHINERY

No of engines	1
Make	MAN
Type	D2542 12 CYL
HP	320
kW	235.20
Fuel	diesel
Year installed	1985
Year of overhaul	March 2025 by MAN agent
Maximum speed (kn)	11
Drive	shaft
Bowthruster	hydraulic
Propeller type	Hundested mechanical controllable Pitch propeller
Propeller blades	4
Manual bilge pump	yes
Electric bilge pump	yes
Generator	MAN D0226 generator 43KW



KEMPERS KETCH 24M

Generator 2	MASE Mariner 2000TS (18kW), newly installed in aft Lazarette
Batteries	yes
Start battery	yes
Service battery	yes
Navigation Battery	yes
Generator battery	yes
Battery charger	yes
Inverter	yes
Watermaker	Overhauled Dessalator watermaker (removed, serviced, reinstalled)
Stabilizers	Koop Nautic stabilizers

NAVIGATION

Compass	yes
Depth sounder	I70s instrumentation -CP100 sonar module + high-speed transduce
VHF	Ray 90 wireless station + wireless VHF for cockpit
Radar	Quantum 18" Q24C RADAR
Radar/GPS/plotter	Raymarine 12" and Raymarine 16"
AIS receiver	yes
AIS transceiver	AIS 700 Class B (TX/RX)
Camera	CAM300 Eyeball engine room camera
Navigation lights	Overhauled navigation lights & mast lights

EQUIPMENT

Cockpit cushions	yes
Cockpit table	yes
Boarding ladder	yes
Gangway	yes
Anchor	yes
Anchor chain	yes



KEMPERS KETCH 24M

Windlass	hydraulic
Dinghy	Yamaha 340
Outboard	Honda 20 HP fourstroke
Davits	yes
Sea railing	yes
Life raft (pers)	Two new 8-person liferafts (16 pax total)
Wiper	yes
Horn	yes
Fenders	yes
Mooring lines	yes
TV	New TVs in master cabin, saloon, and bridge
TV receiver	New numeric TV antenna on mast + wiring
Radio	Bluetooth car radio in bridge + sound system repairs
Clock - barometer	yes
Fire extinguisher	New fire extinguishers in all areas
Extinguisher in engine room	yes

RIGGING

Rigging	ketch
Standing rigging	Renewed 2007
Material mast	aluminium
Mainsail	Elvstrom 70m ² refit 2025
Stoway mast	yes
Mizzen	31m ² (overhauled at Elvstrom sails 2025)
Jib	2 x 38m ² (overhauled at Elvstrom sails 2025)
Genoa	135m ² (overhauled at Elvstrom sails 2025)
Yankee	63m ² (overhauled at Elvstrom sails 2025)
Secondary sheet winch	yes
Genoa sheetwinches	yes
Halyard winches	yes



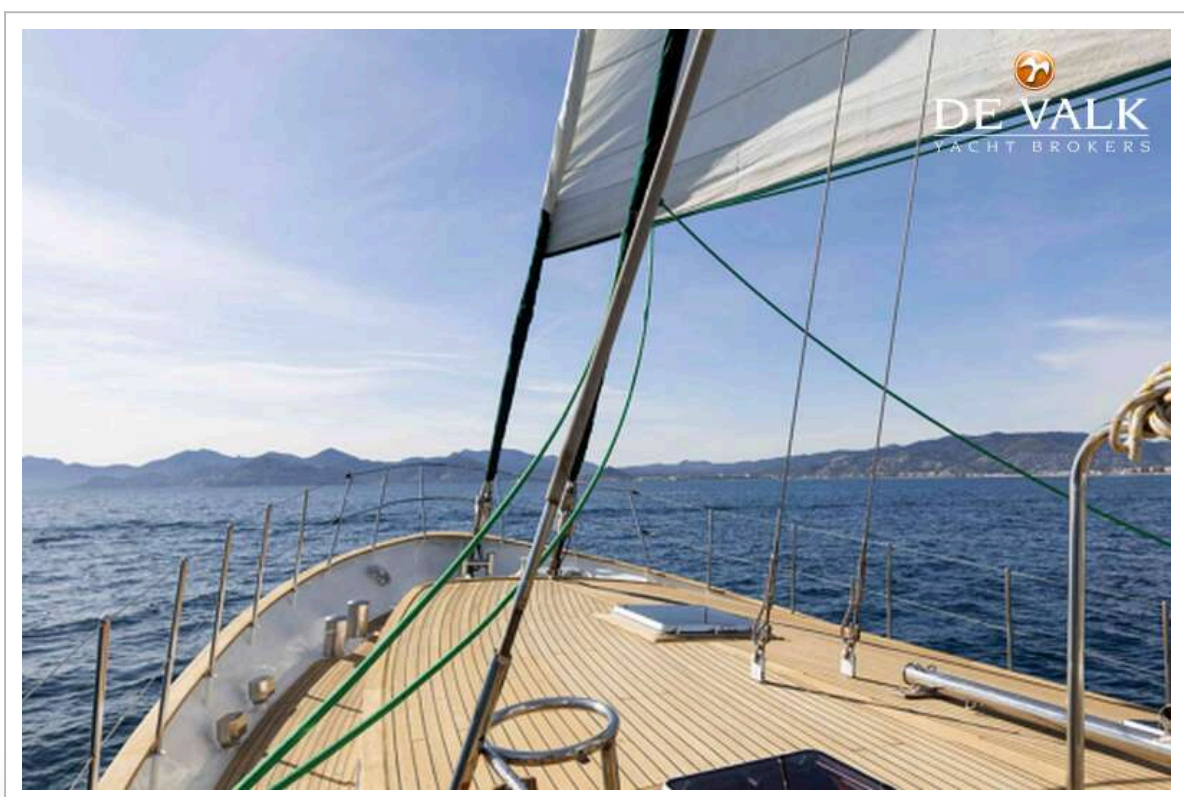
KEMPERS KETCH 24M



KEMPERS KETCH 24M



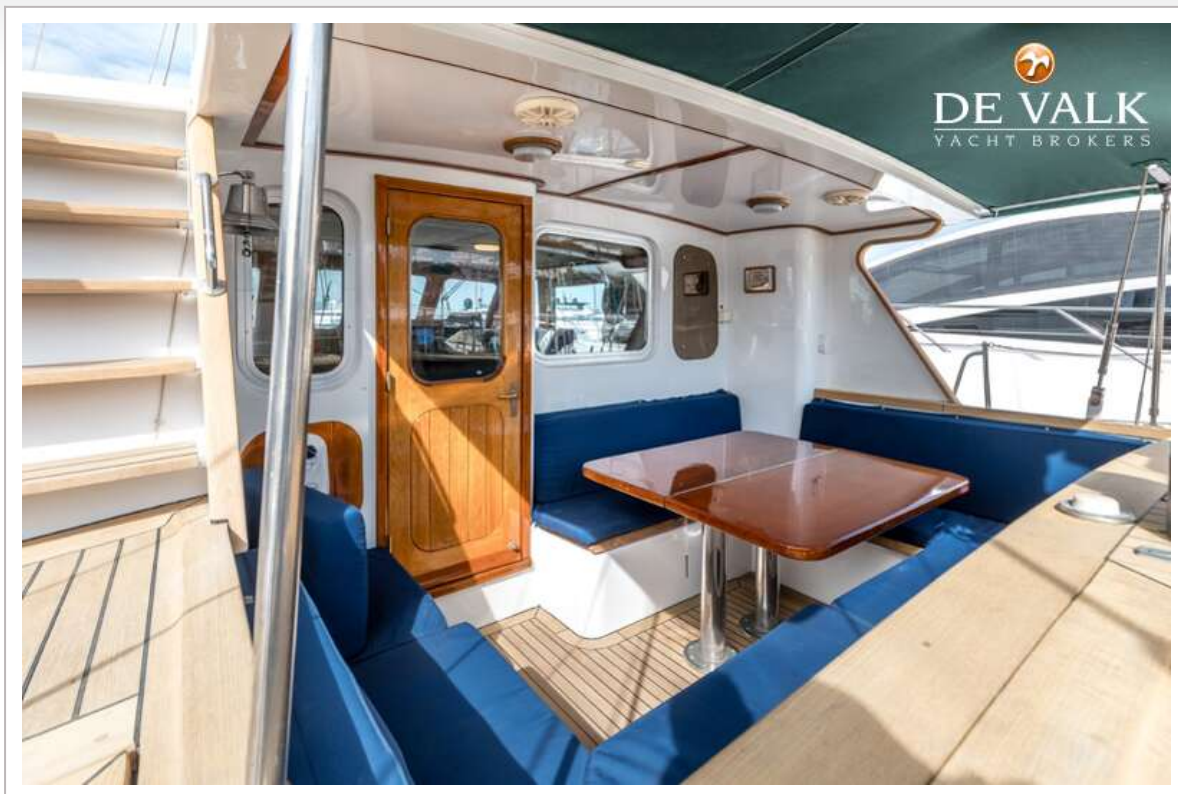
KEMPERS KETCH 24M



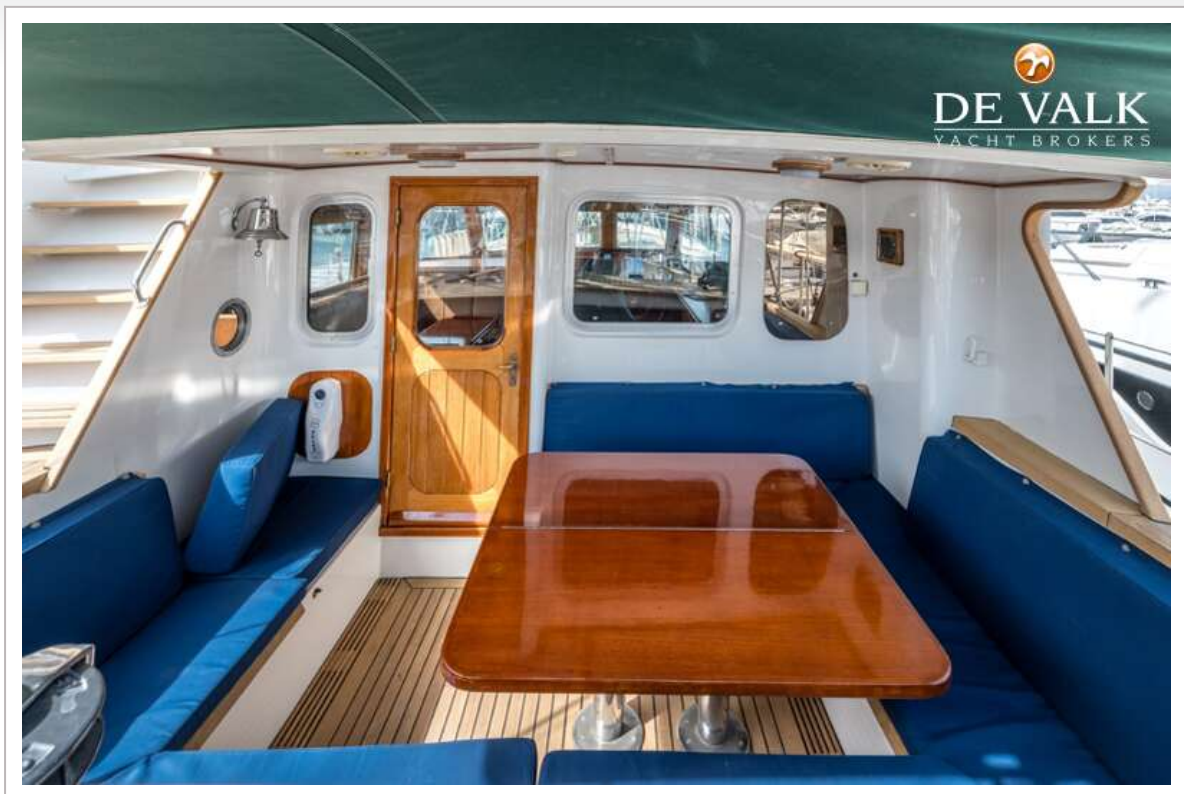
KEMPERS KETCH 24M



KEMPERS KETCH 24M



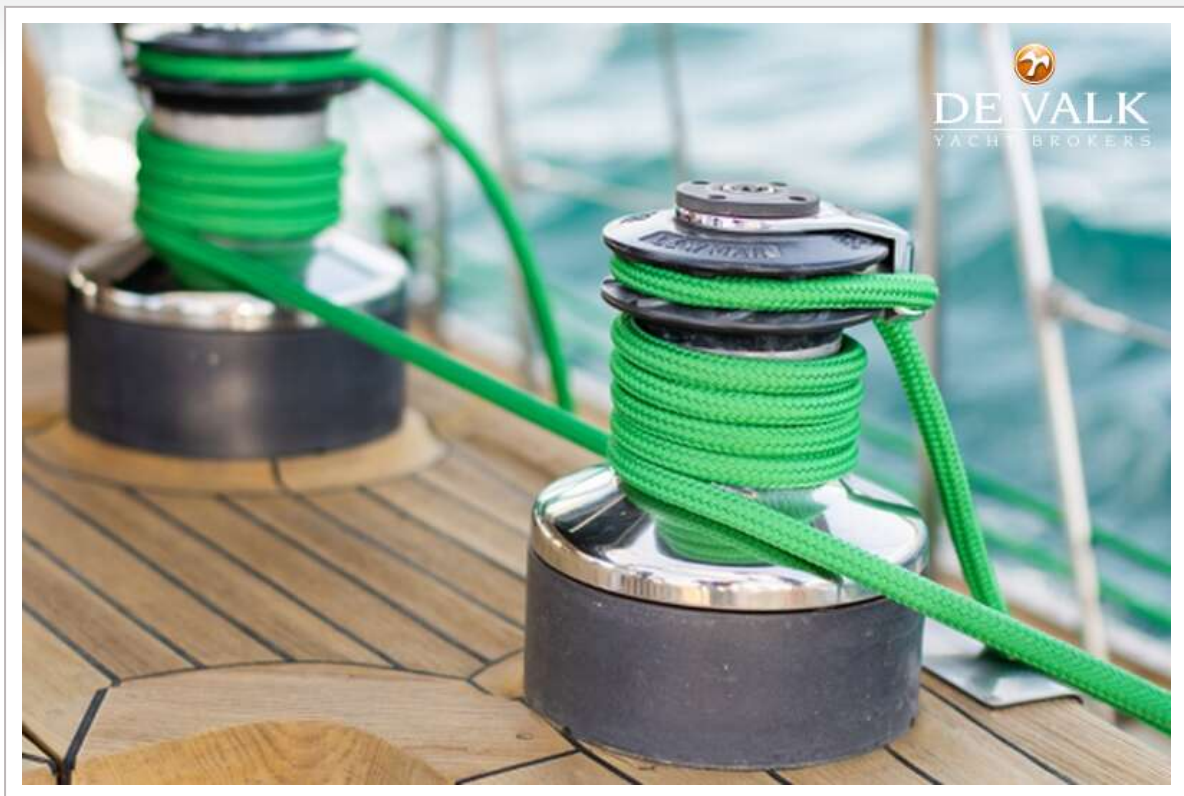
KEMPERS KETCH 24M



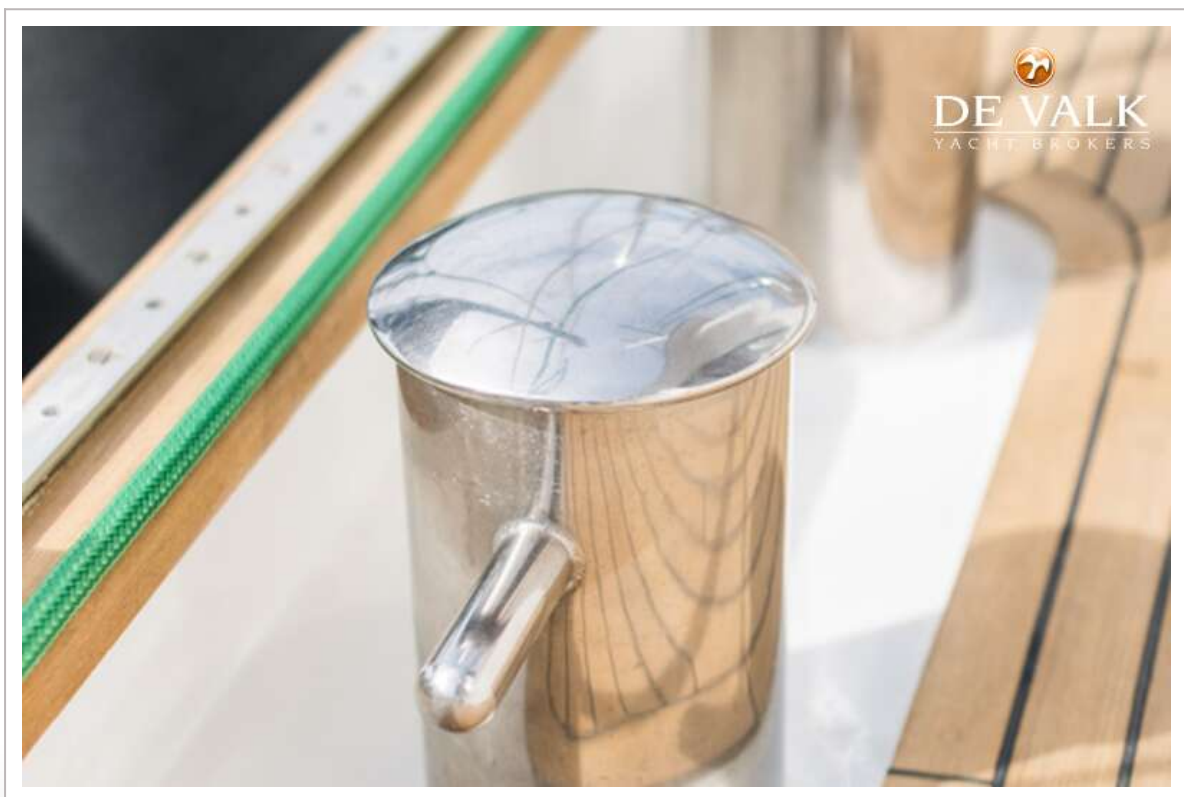
KEMPERS KETCH 24M



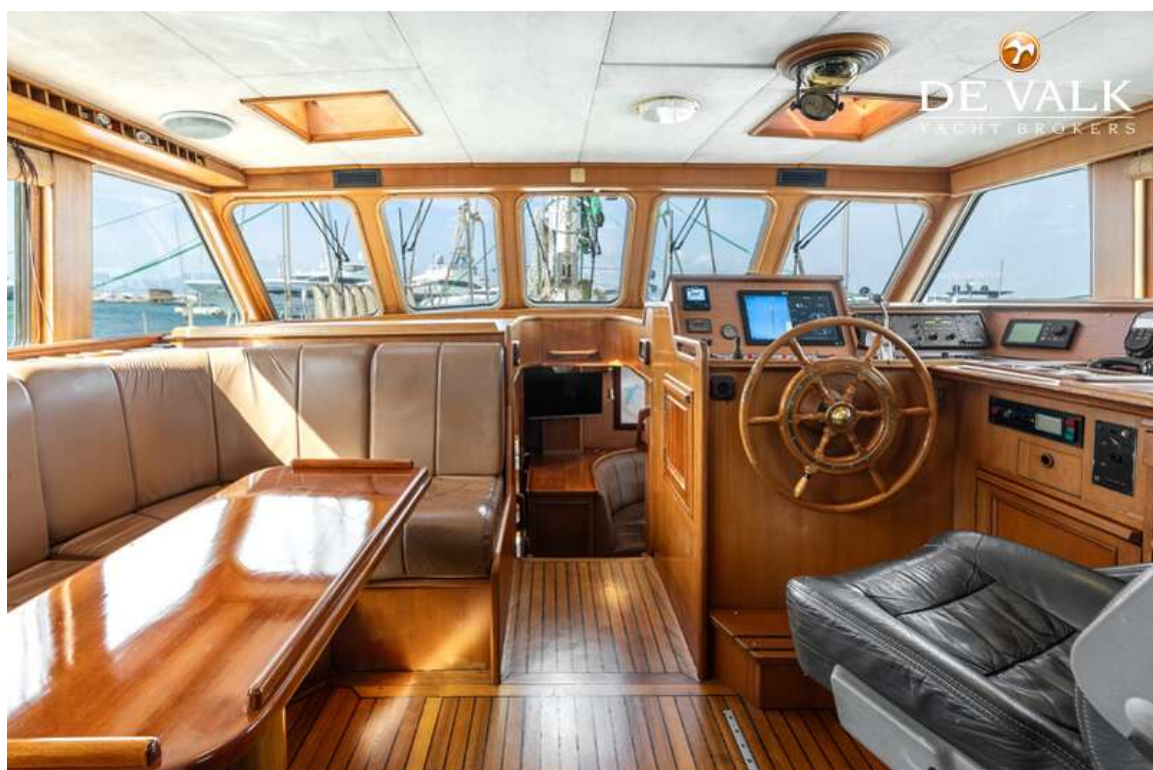
KEMPERS KETCH 24M



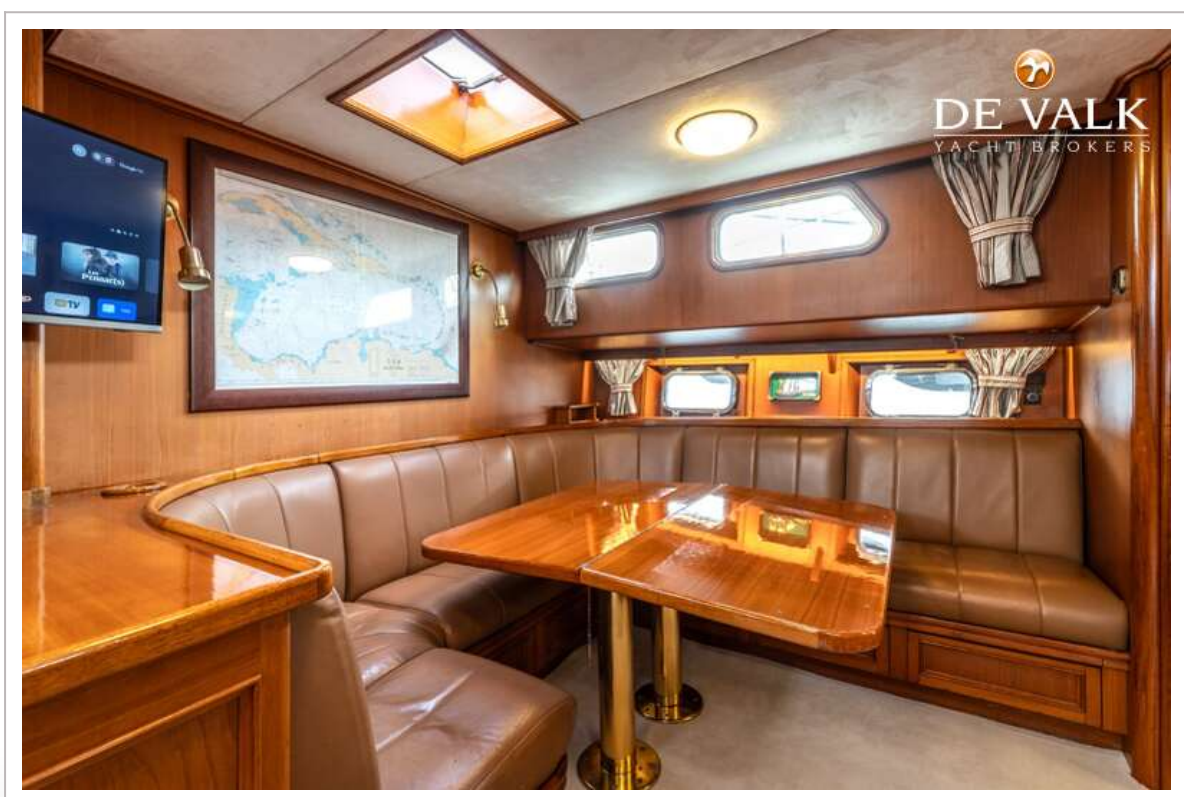
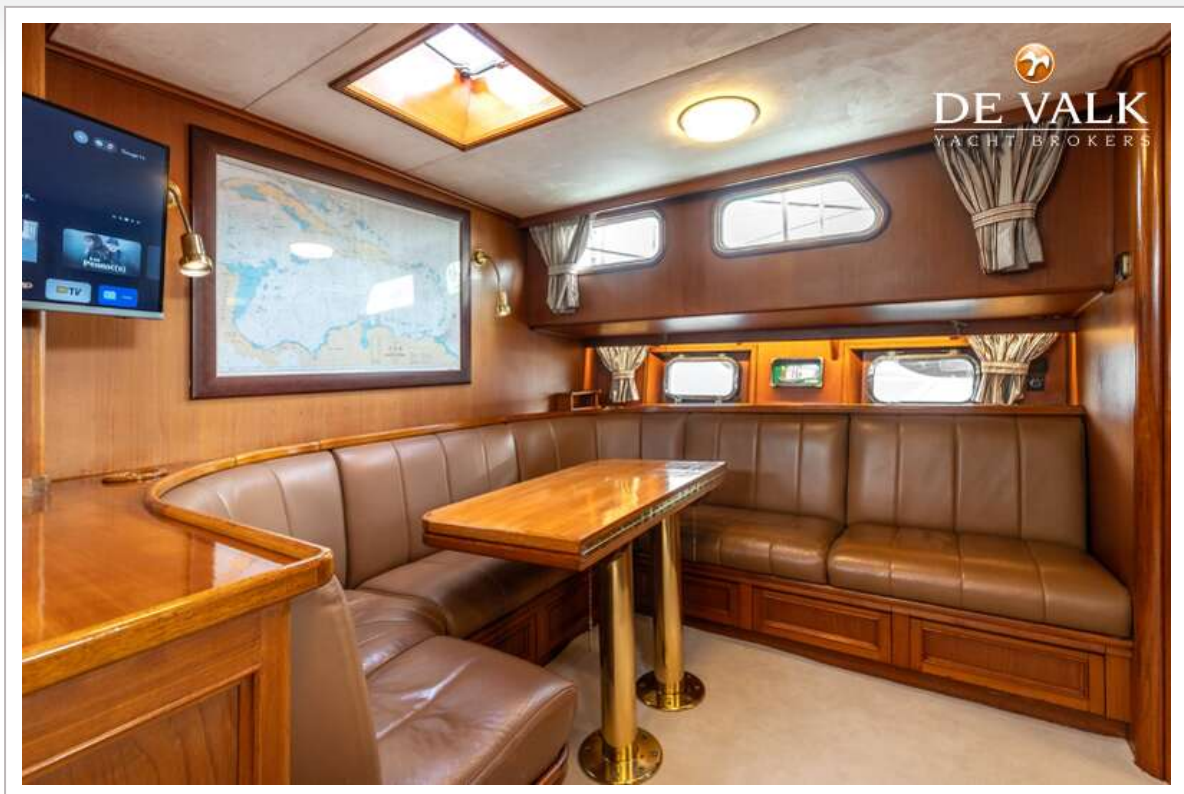
KEMPERS KETCH 24M



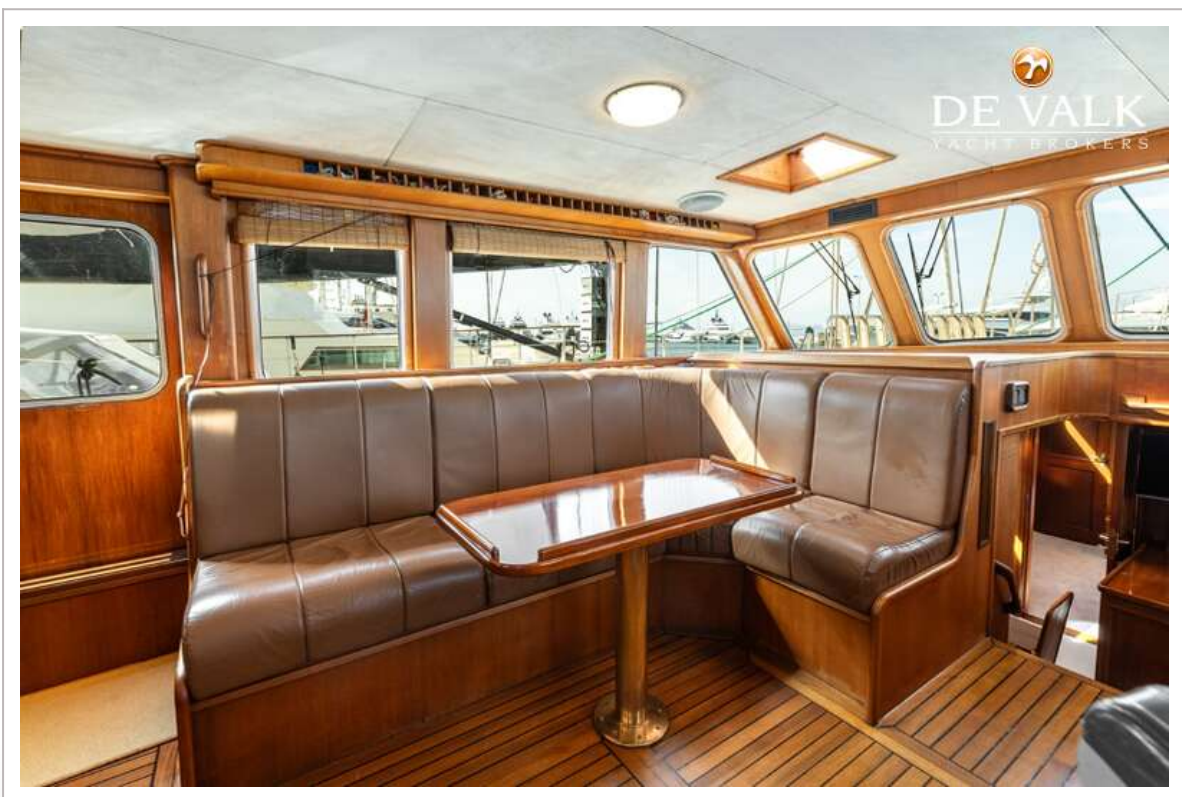
KEMPERS KETCH 24M



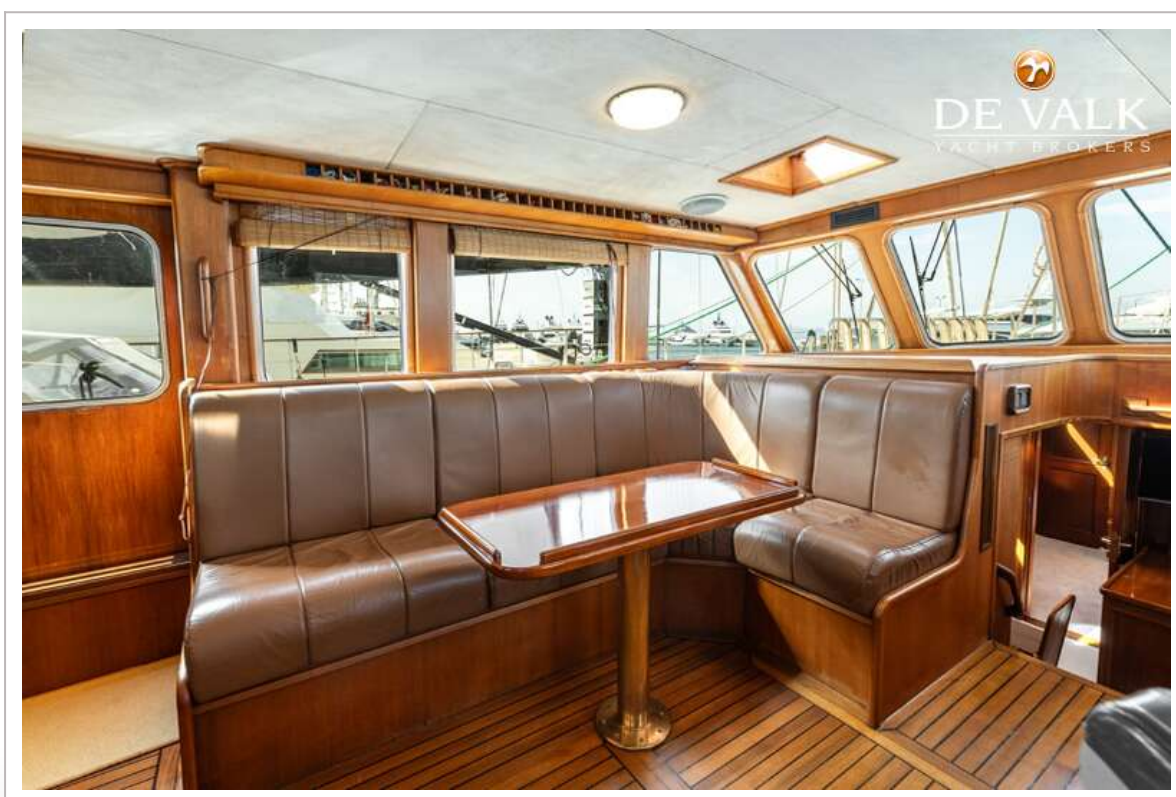
KEMPERS KETCH 24M



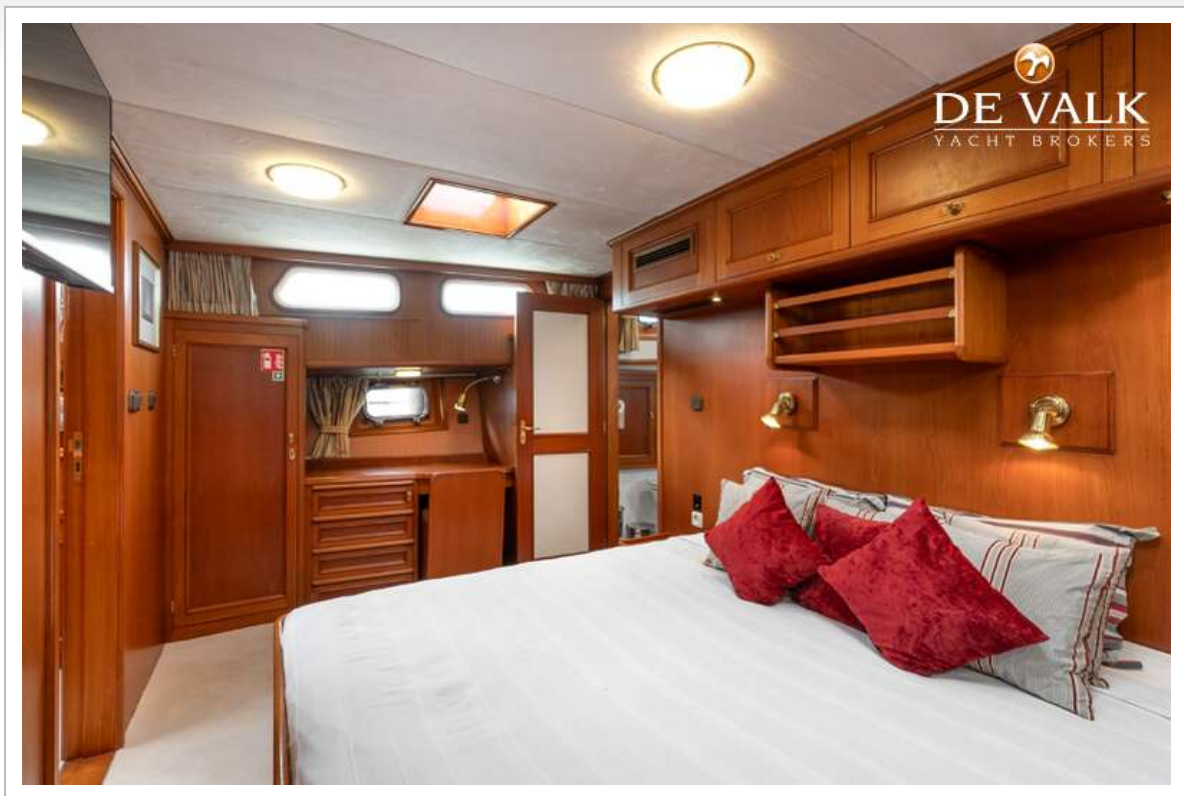
KEMPERS KETCH 24M



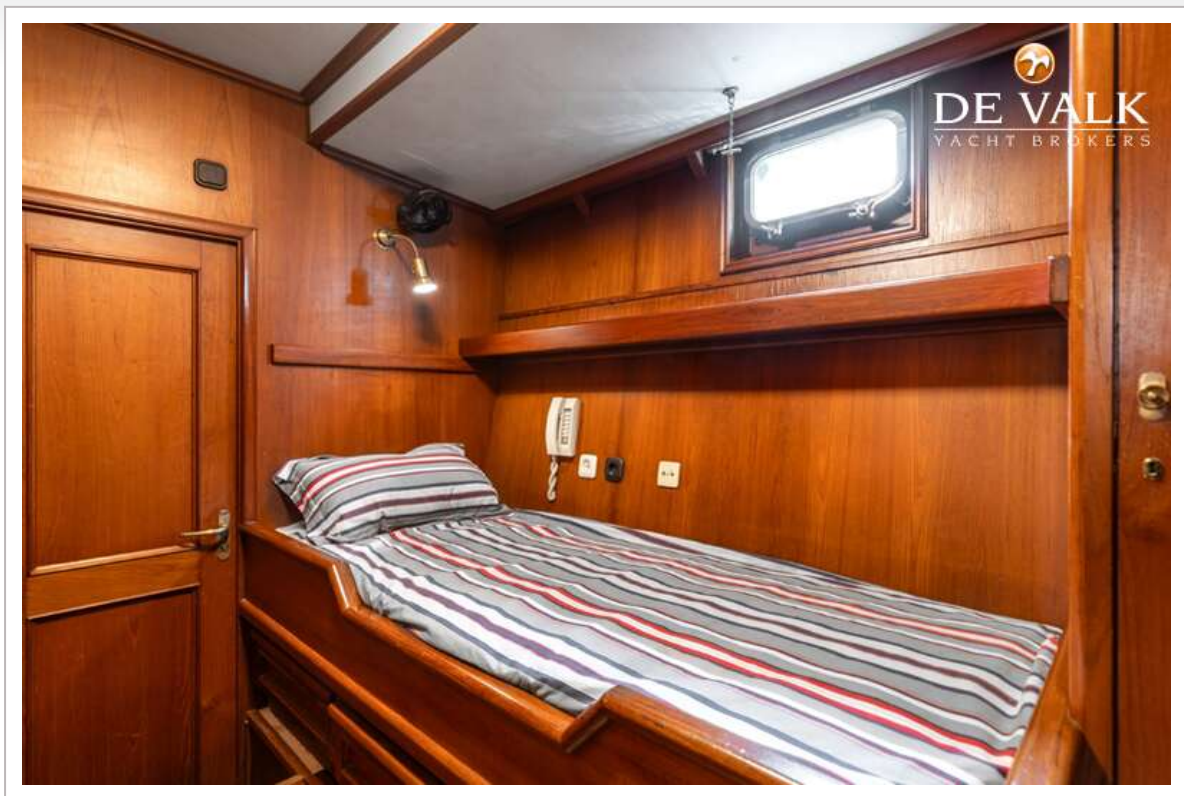
KEMPERS KETCH 24M



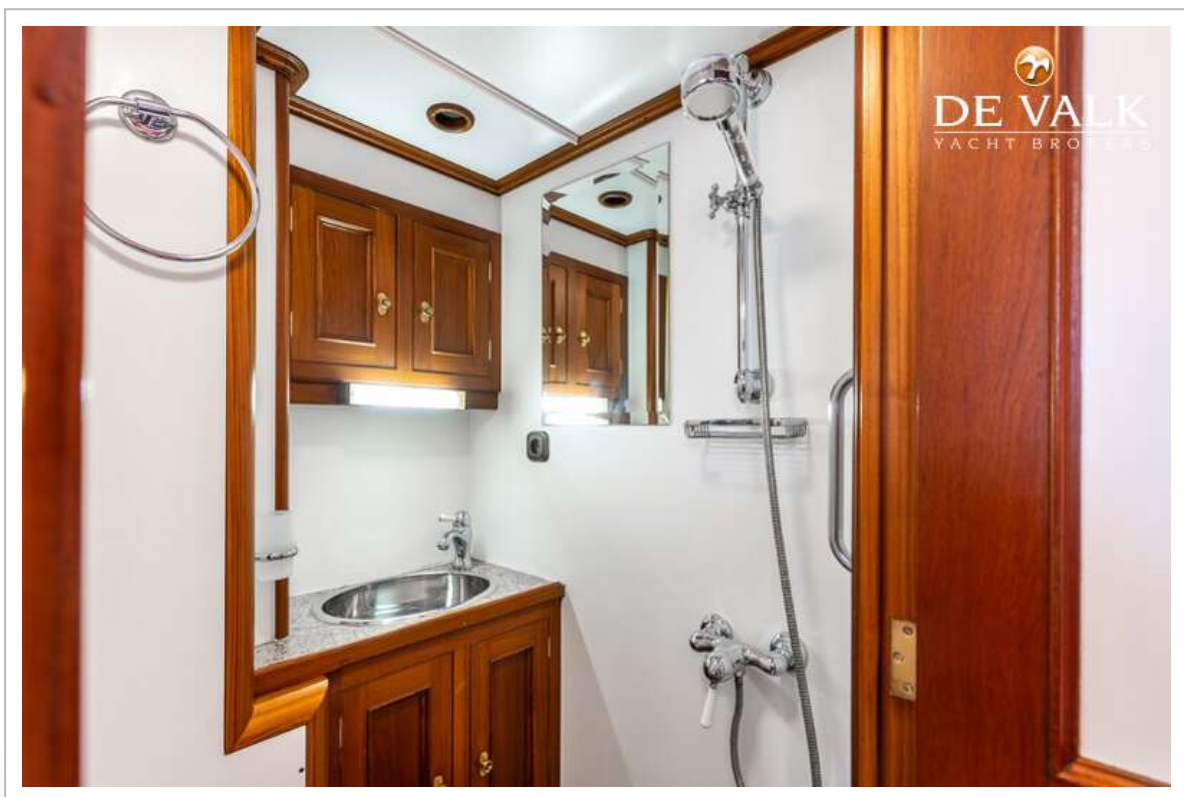
KEMPERS KETCH 24M



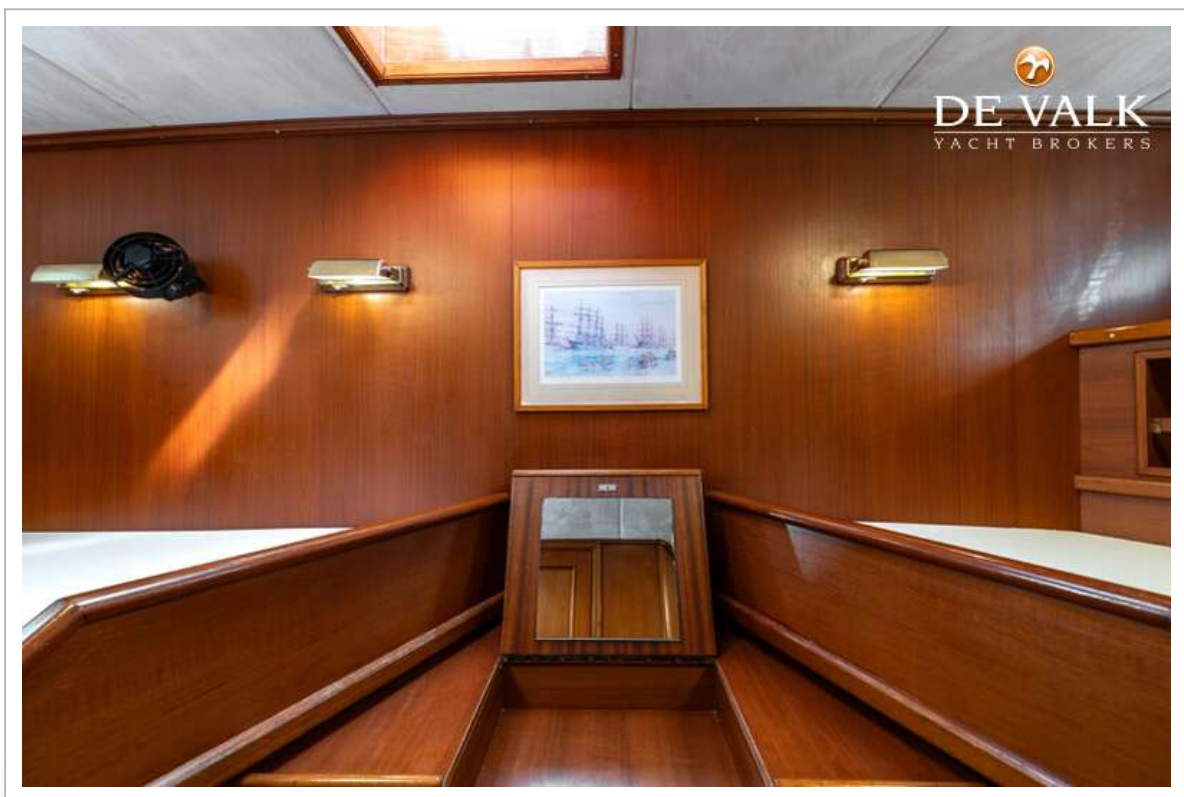
KEMPERS KETCH 24M



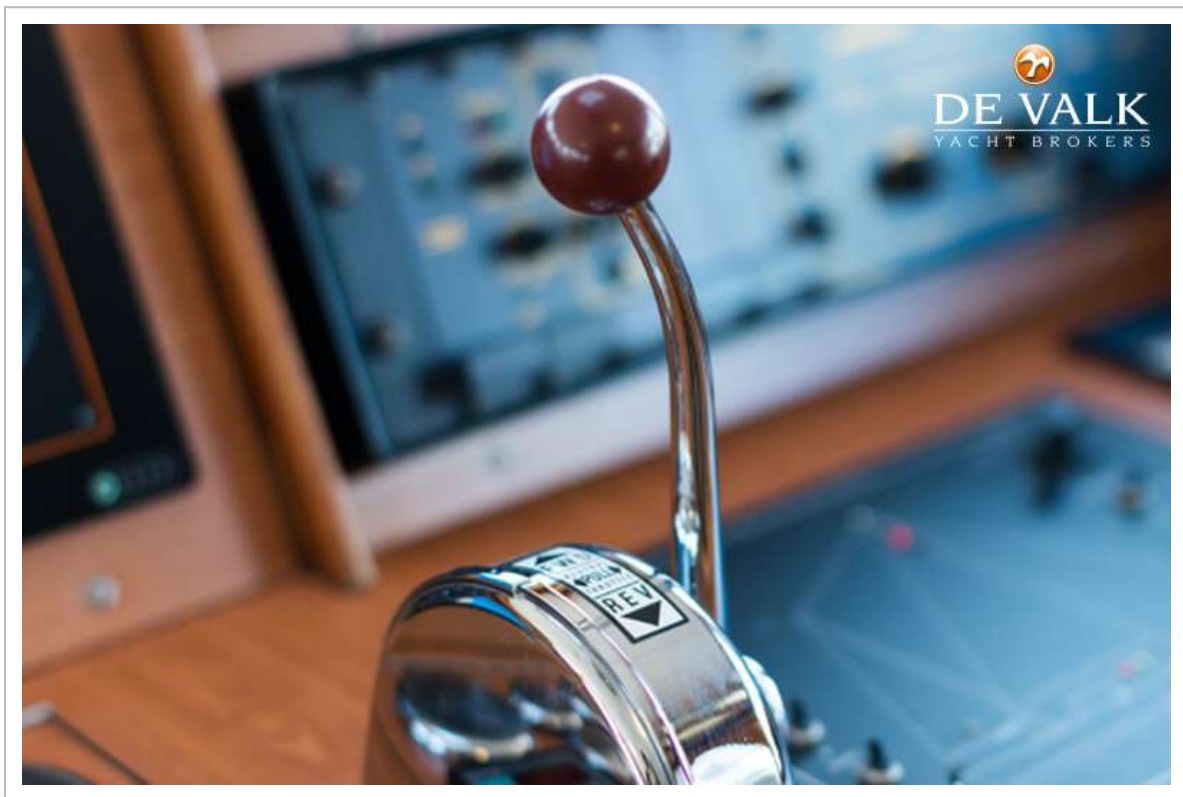
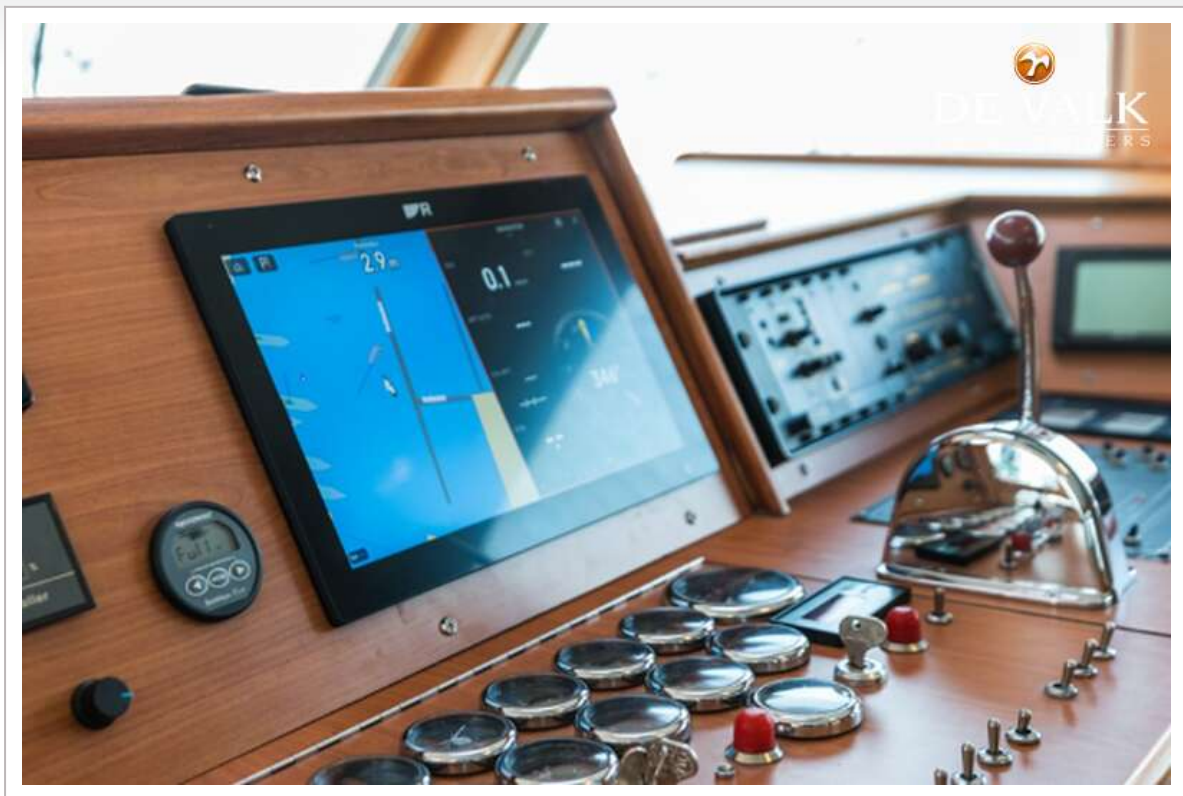
KEMPERS KETCH 24M



KEMPERS KETCH 24M



KEMPERS KETCH 24M



KEMPERS KETCH 24M

