



DE VALK
YACHT BROKERS



HANSE 355



DE VALK
YACHT BROKERS

BROKERAGE | CHARTER | BERTHS | FINANCE | INSURANCE | YACHT MANAGEMENT

BROKER'S COMMENTS

The Hanse 355 is a modern, seaworthy sailboat that perfectly combines comfort and performance. With her clean lines, spacious cockpit and easy-to-handle sail plan, she is ideal for both novice and experienced sailors. Inside, the Hanse 355 offers a surprising amount of living space, with a bright saloon, well-equipped galley and comfortable sleeping quarters. The steering position is clear and the boat is instantly responsive, making for an enjoyable sailing experience. In short: a stylish and reliable cruiser for relaxed trips and serious cruising.

Johan Schootstra

SPECIFICATIONS

Dimensions	10.59 x 3.55 x 1.52 (m)	Builder	Hanse Yachts, Greifswald
Built	2011	Cabins	2
Material	GRP	Berths	6
Engine(s)	1 x Volvo Penta D1-20F diesel	Hp/Kw	18.00 (hp), 13.25 (kw)
Asking price	sold (VAT)	Lying	at sales office

CONTACT

Sales office	De Valk Hindeloopen B.V.	Telephone	+31 514 52 40 00
Address	Oosterstrand 1 8713 JS Hindeloopen NL	E-mail	hindeloopen@devalk.nl

DISCLAIMER

These particulars are given in good faith as supplied but cannot be guaranteed.



GENERAL

Model	HANSE 355
Type	sailing yacht
LOA (m)	10,59
LWL (m)	9,60
Beam (m)	3,55
Draft (m)	1,52
Headroom (m)	1,85
Year built	2011
Builder	Hanse Yachts, Greifswald
Country	Germany
Designer	Judel&Vrolijk
Displacement (t)	6,3
Ballast (tonnes)	1.8
CE norm	A
Hull material	GRP
Hull colour	Light gray
Hull shape	round-bilged
Keel type	fin keel with bulb
Superstructure material	GRP
Rubbing strake	stainless steel
Deck material	GRP
Deck finish	non-skid moulded in
Superstructure deck finish	non-skid moulded in
Cockpit deck finish	teak
Window frame	aluminium
Window material	perspex
Deckhatch	2x flush
Fuel tank (litre)	polyethylene 90 ltr.
Level indicator (fuel tank)	Philippi TCM 1
Freshwater tank (litre)	polyethylene 240 ltr.



Level indicator (freshwater)	Philippi TCM 1
Blackwater tank (litre)	polyethylene 30 ltr.
Blackwater tank extraction	deck extraction + uw line
Wheel steering	Jefa Steering
Emergency tiller	yes

ACCOMMODATION

Cabins	2
Berths	6
Interior	mahogany
Floor	teak and holly
Saloon	yes
Headroom saloon (m)	1,85 mtr.
Heating	diesel ducted hot air Eberspächer Airtronic
Navigation center	yes
Chart table	yes
Aft Cabin	1x
Convertible berth	yes
Galley	yes
Countertop	Duropal
Sink	stainless steel
Cooker	calor gas 2 burner
Oven	In cooker
Fridge	Isotherm
Hot water system	220V + engine Sigmar Marine
Water pressure system	electrical
Owners cabin	v-bed Forward cabin
Bed length (m)	1,95 mtr.
Wardrobe	hanging and shelves
Guest cabin 1	double bed aft cabin
Wardrobe	hanging and shelves



Bathroom	shared
Toilet	Jabsco
Toilet system	manual
Wash basin	yes
Shower	yes

MACHINERY

No of engines	1
Make	Volvo Penta
Type	D1-20F
HP	18
kW	13.25
Fuel	diesel
Engine hours	1210
Engine cooling system	freshwater heat exchanger
Drive	sail-drive
Engine controls	bowden cable
Gearbox	mechanical
Exhaust	watercooled
Propeller type	folding Flexofold
Propeller blades	2
Manual bilge pump	yes
Electric bilge pump	yes
Electrical installation	12 / 220 volt
Battery monitor	Philippi TCM 1
Battery charger	Sterling
Shorepower	with cable

NAVIGATION

Compass	Plastimo Offshore 105
Multi control display	Simrad IS20 Graphic and B&G Triton ²



VHF	B&G V50
Autopilot	Simrad AP24
Plotter/GPS	B&G Vulcan Series
AIS transceiver	Simrad NAIS - 500 Class B
Navigation lights	yes

EQUIPMENT

Sprayhood with grab rail	yes
Winter cover	yes
Cockpit table	yes
Bathing platform	yes
Boarding ladder	yes
Deck shower	yes
Anchor	CQR Plough
Anchor chain	Anchor line
Sea railing	yes
Grab rail (superstructure)	stainless steel
Pushpit	yes
Pulpit	yes
Fenders	yes
Mooring lines	yes
Radio-cd player	Clarion
Cockpit speakers	yes
Speakers in salon	yes

RIGGING

Rigging	fractional
Standing rigging	wire
Brand mast	Z-Spar
Material mast	aluminium
Spreaders	2



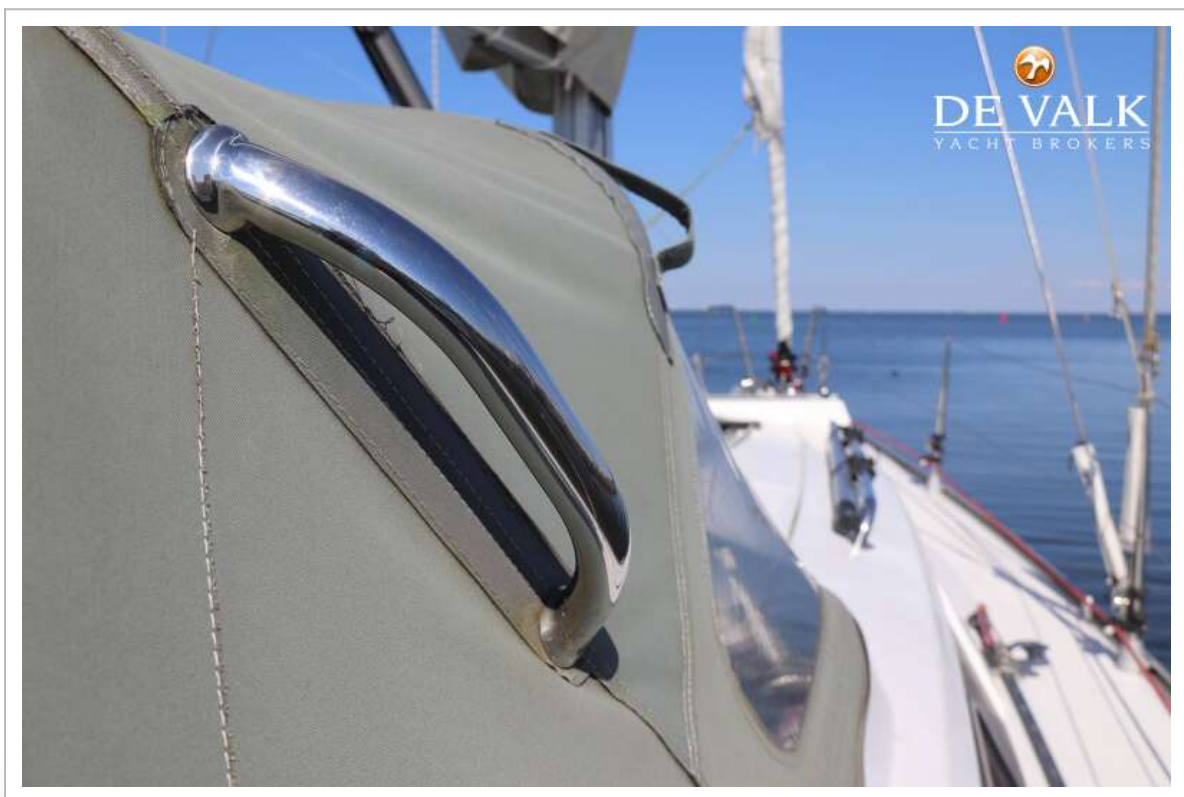
Mainsail	North Sails
Mainsail cover	Lazy Bag mainsail cover with Lazy Jacks
Genoa	North Sails : Self tacking Jib
Genoa furler	Facnor LS165
Gennaker	Quantum Sails A3 cruising new 2016
Self tacking jib installation	yes
Reefing System	quick-one-line-reefing
Boomvang	gasspring
Genoa sheetwinches	2x Lewmar 40
Halyard winches	2 x Lewmar 40 ST



HANSE 355



HANSE 355



HANSE 355



HANSE 355



HANSE 355



HANSE 355



HANSE 355



HANSE 355



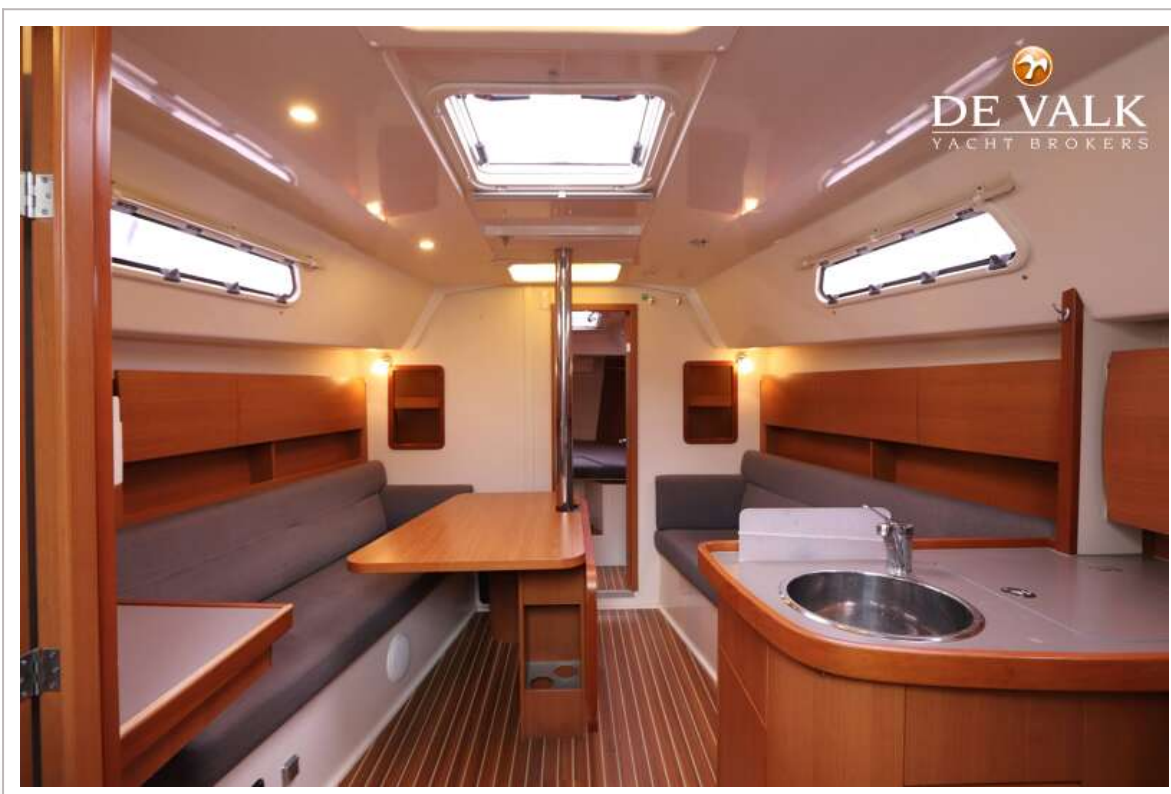
HANSE 355



HANSE 355



HANSE 355



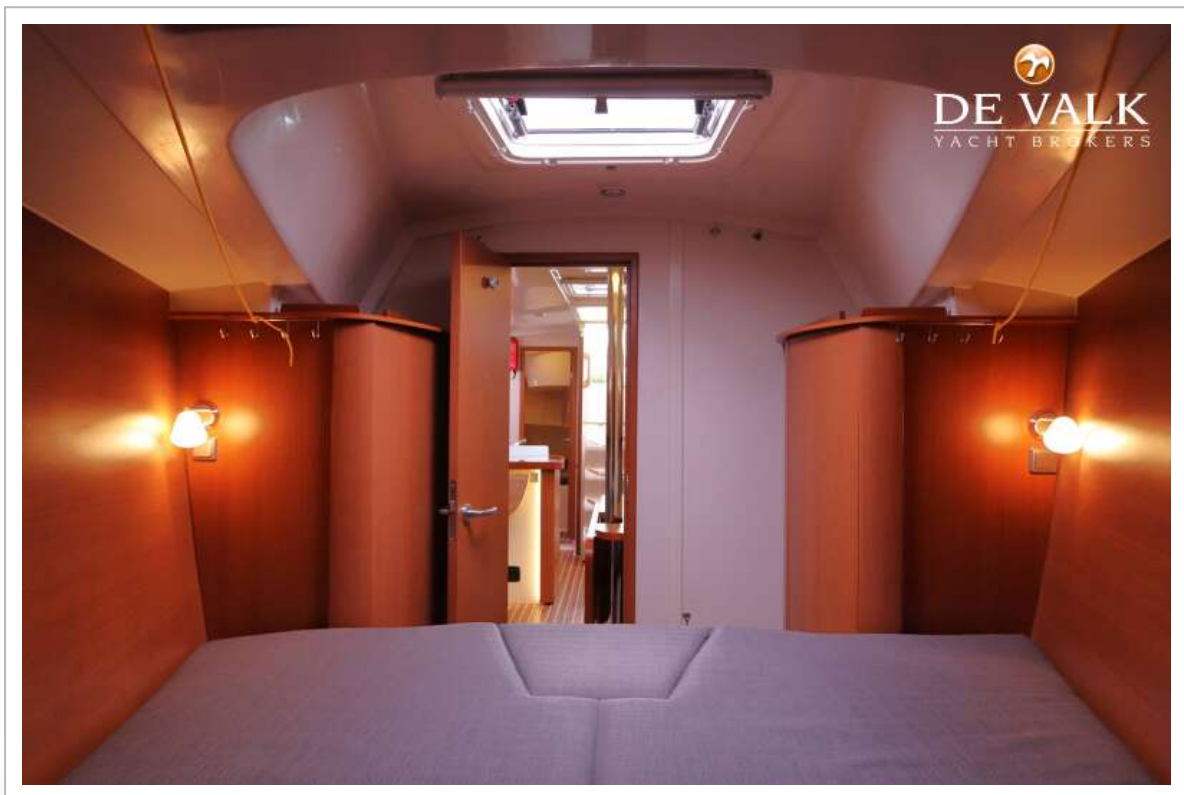
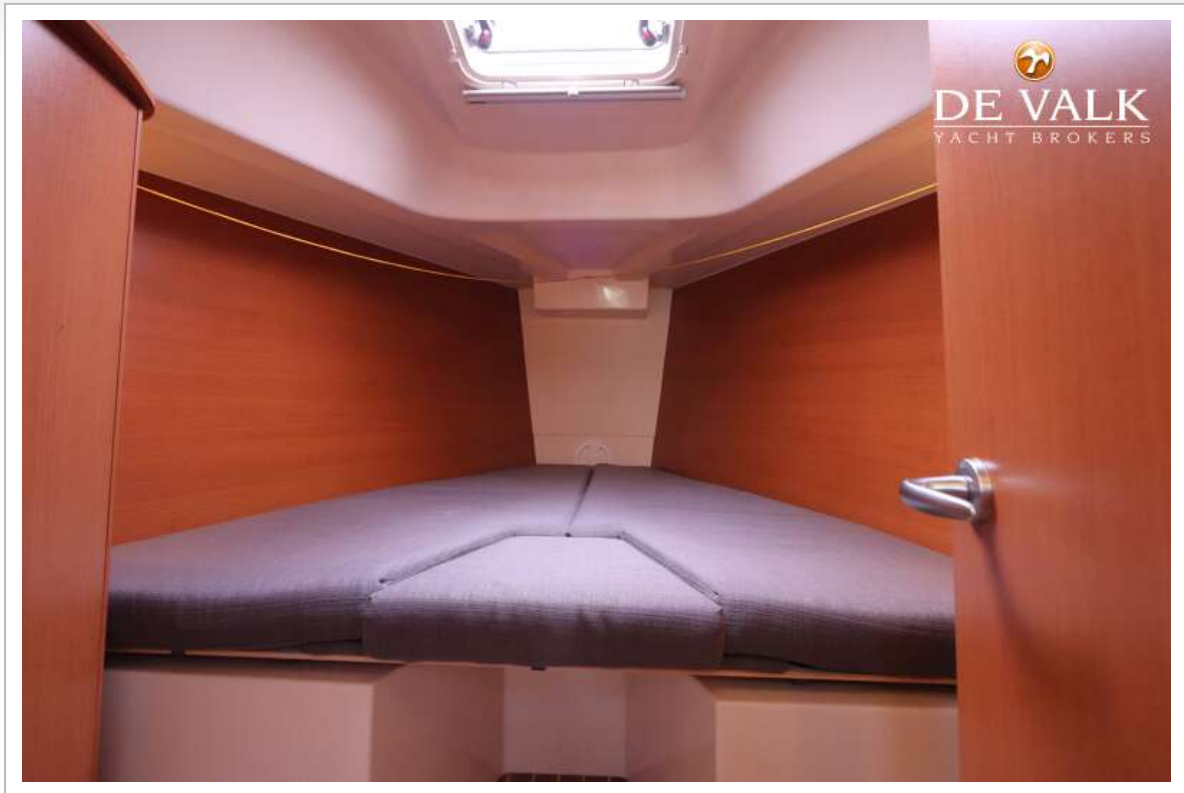
HANSE 355



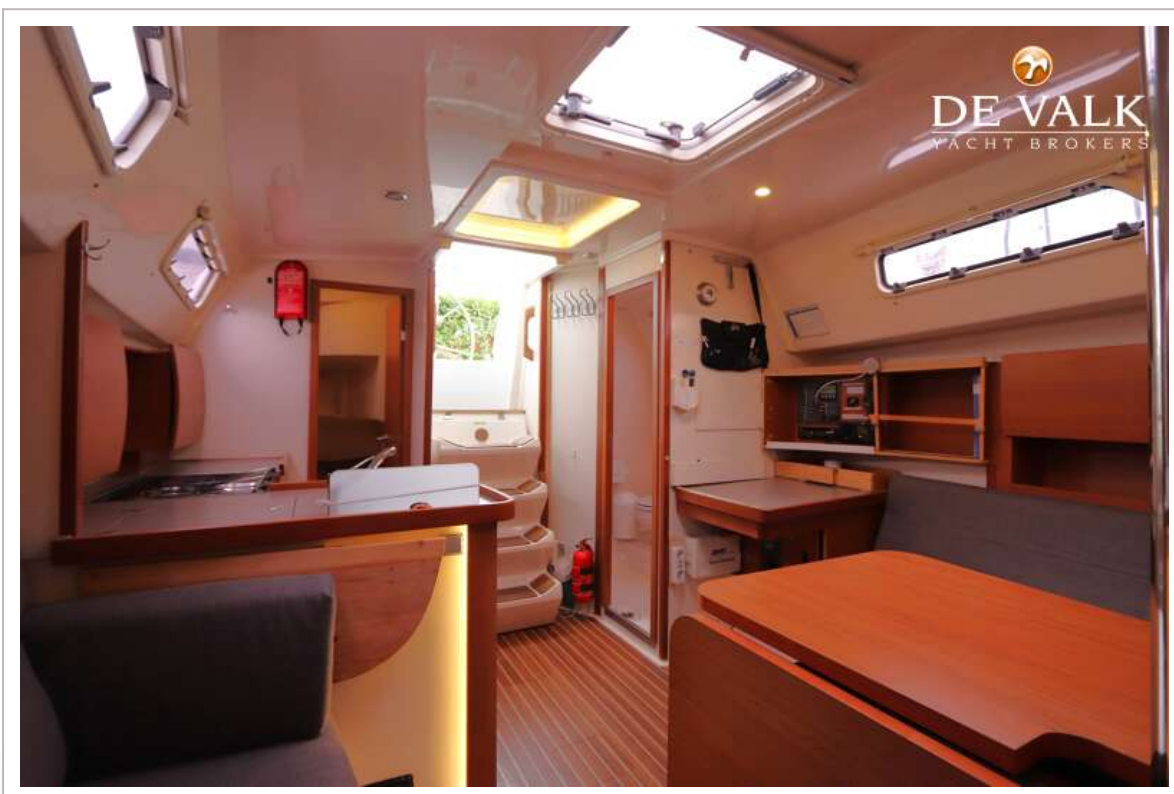
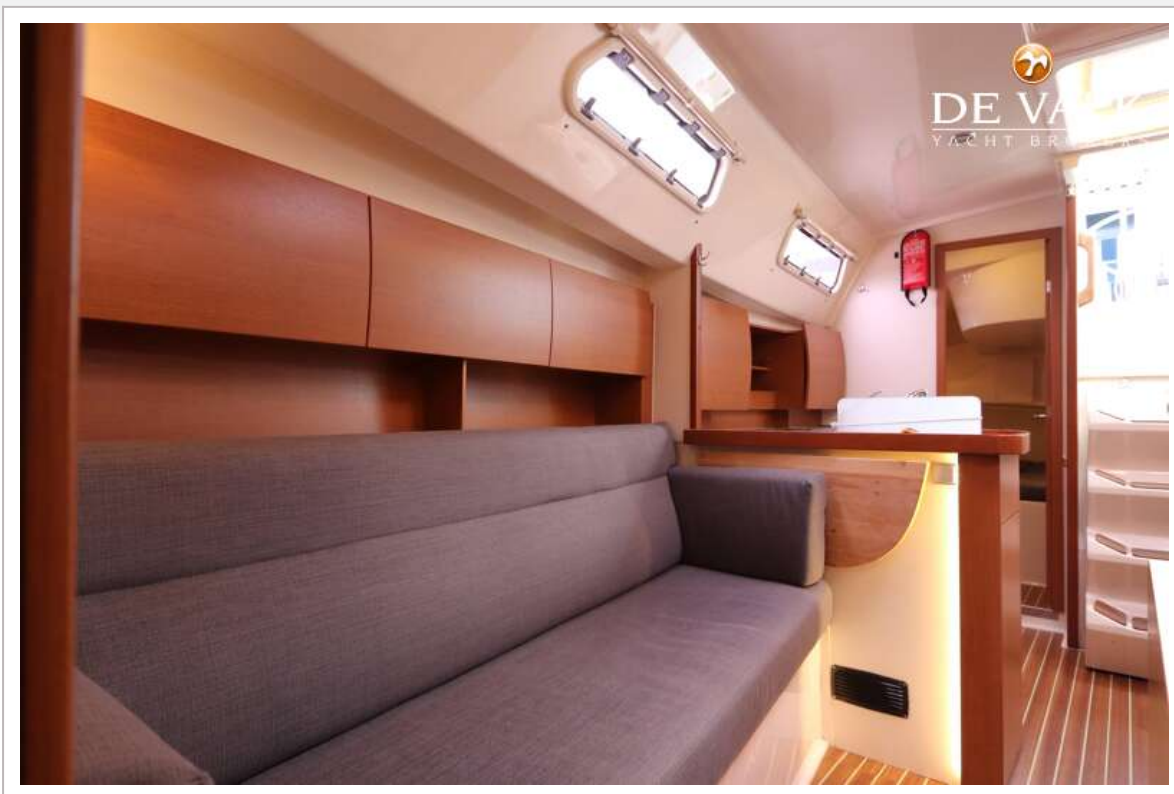
HANSE 355



HANSE 355



HANSE 355

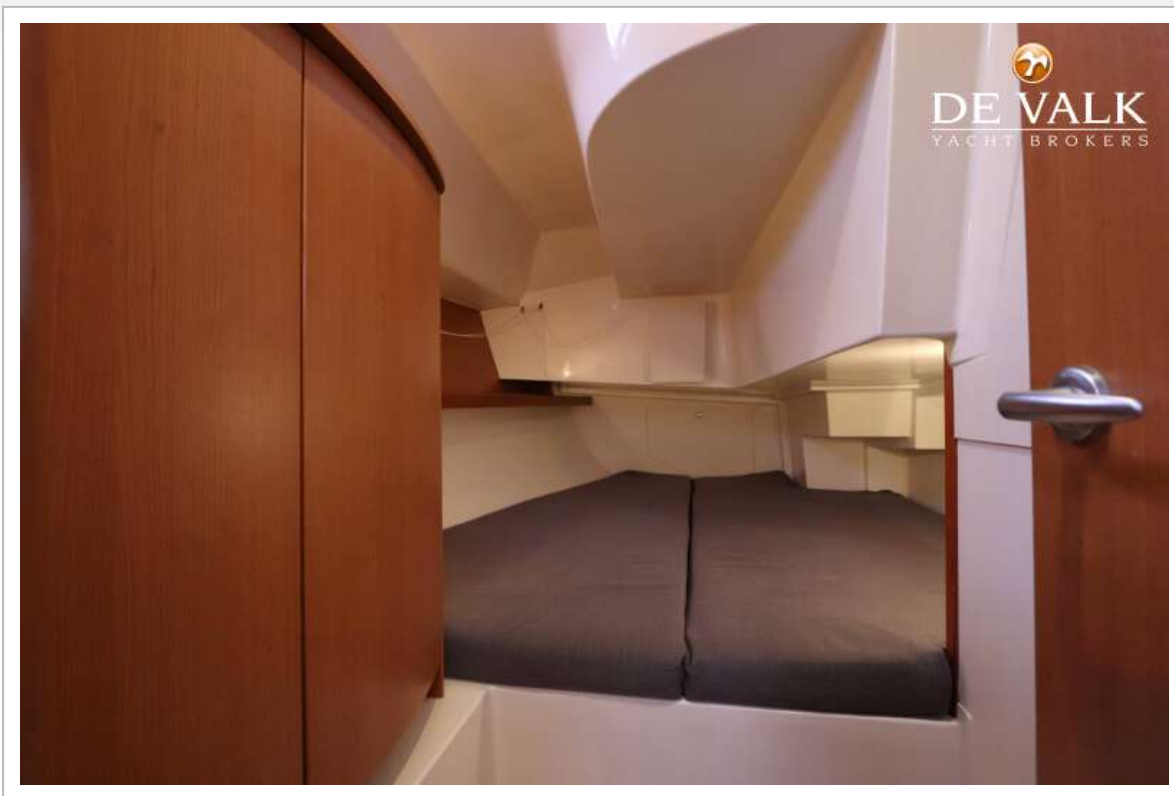


HANSE 355

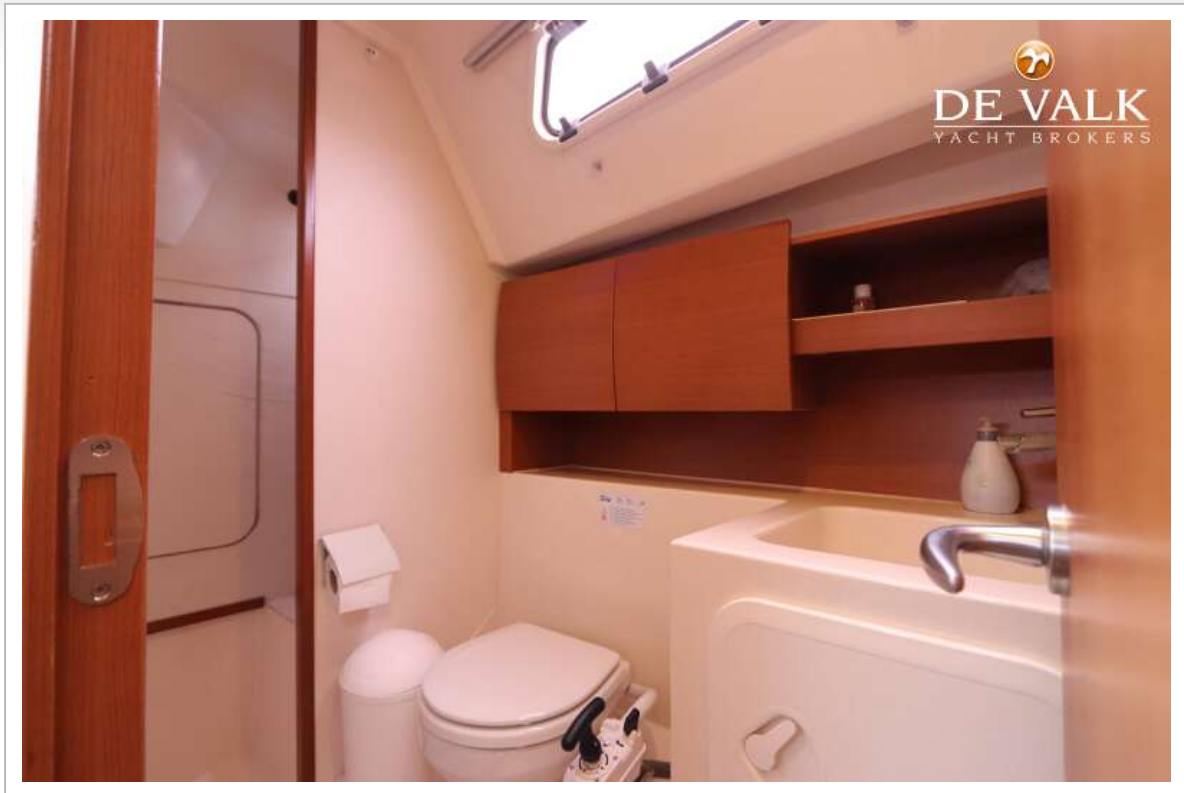




HANSE 355



HANSE 355



HANSE 355

